

Data Path : Z:\pestpcbsrv\HPCHEM1\ECD_0\Data\PO121721\
 Data File : PO083814.D
 Signal(s) : Signal #1: ECD1A.CH Signal #2: ECD2B.CH
 Acq On : 17 Dec 2021 12:13
 Operator : AJ\MA
 Sample : AR1242CCC500
 Misc :
 ALS Vial : 4 Sample Multiplier: 1

Instrument :
 ECD_0
 ClientSampleId :
 AR1242CCC500

Integration File signal 1: autoint1.e
 Integration File signal 2: autoint2.e
 Quant Time: Dec 17 12:27:57 2021
 Quant Method : Z:\pestpcbsrv\HPCHEM1\ECD_0\methods\PO121521.M
 Quant Title : GC EXTRACTABLES
 QLast Update : Thu Dec 16 04:05:27 2021
 Response via : Initial Calibration
 Integrator: ChemStation 6890 Scale Mode: Small noise peaks clipped

Volume Inj. : 2 µl
 Signal #1 Phase : ZB-MR1 Signal #2 Phase: ZB-MR2
 Signal #1 Info : 30Mx0.32mmx 0.50µ Signal #2 Info : 30M x 0.32mm x 0.25µm

Compound	RT#1	RT#2	Resp#1	Resp#2	ng/ml	ng/ml

System Monitoring Compounds						
1) SA Tetrachlo...	4.936	3.941	5652256	1643777	59.330	56.038
2) SA Decachlor...	11.014	9.240	4089720	1549525	59.709	55.184
Target Compounds						
16) L4 AR-1242-1	6.269	5.196	1298923	497841	545.282	526.706
17) L4 AR-1242-2	6.292	5.216	1850878	681188	543.525	519.839
18) L4 AR-1242-3	6.359	5.406	1110676	376004	542.689	535.330
19) L4 AR-1242-4	6.468	5.504	904889	360821	541.769	549.381
20) L4 AR-1242-5	7.256	6.068	919920	483025	530.780	549.885

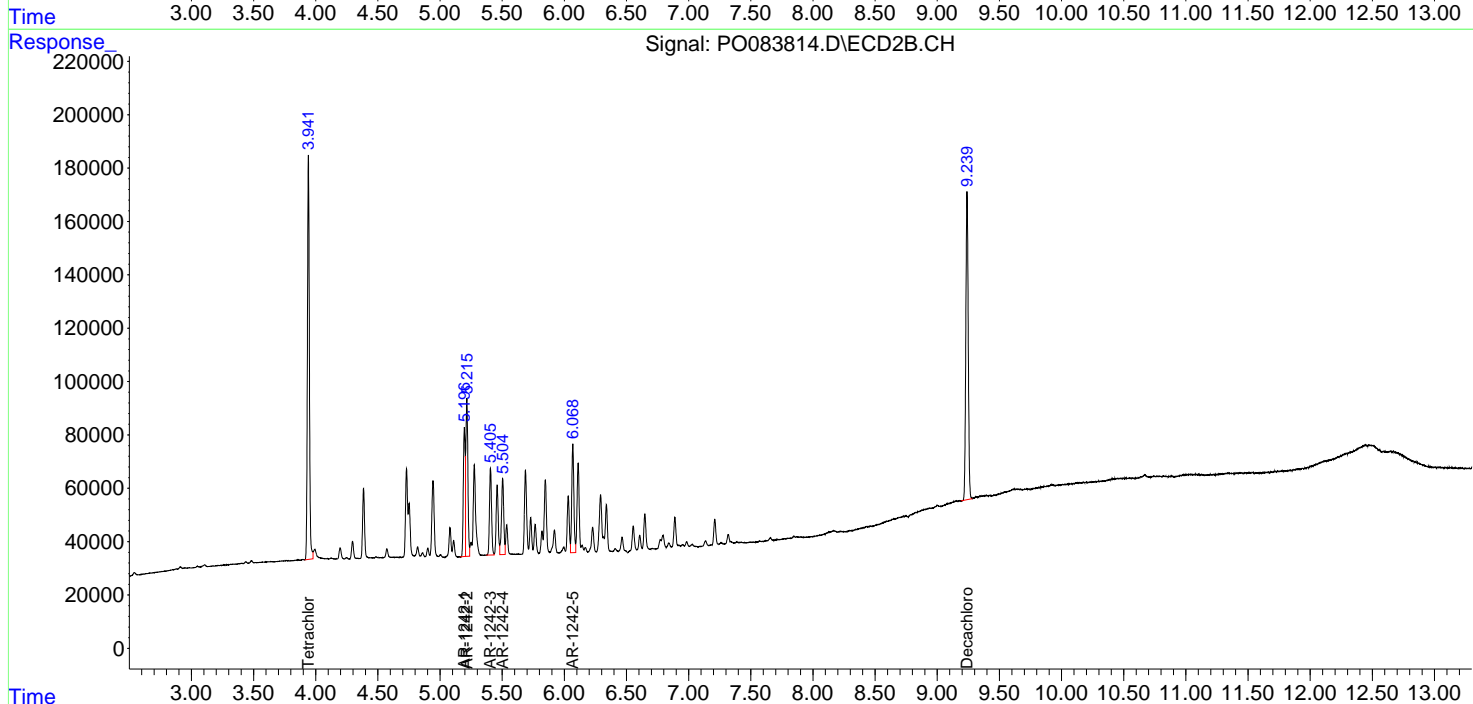
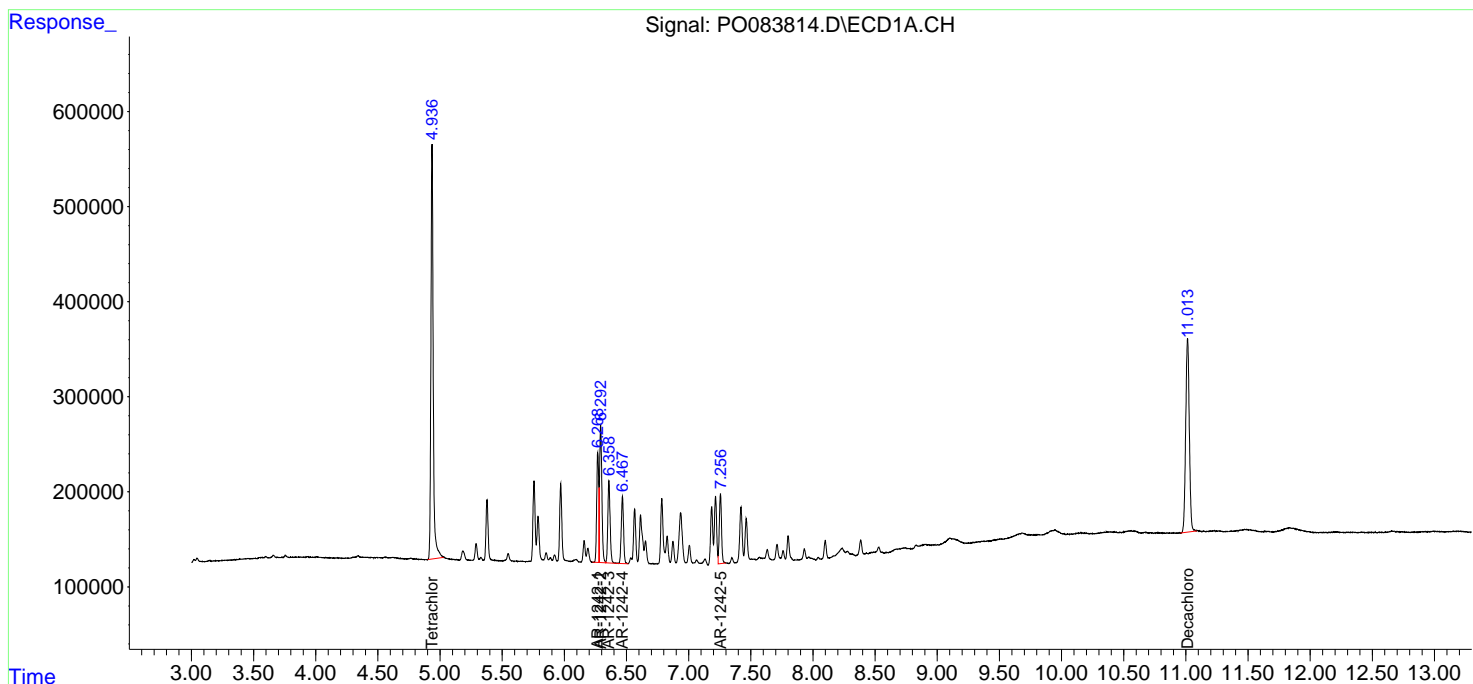
(f)=RT Delta > 1/2 Window (#)=Amounts differ by > 25% (m)=manual int.

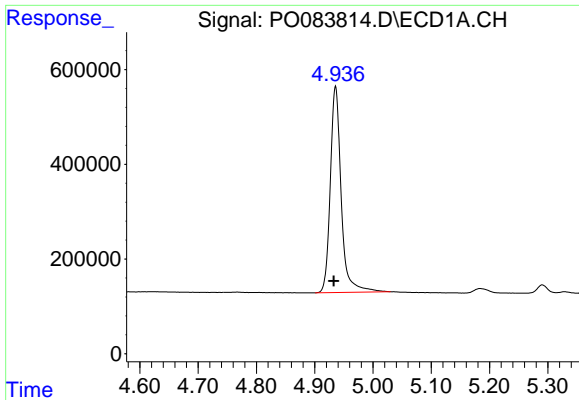
Data Path : Z:\pestpcbsrv\HPCHEM1\ECD_O\Data\PO121721\
 Data File : PO083814.D
 Signal(s) : Signal #1: ECD1A.CH Signal #2: ECD2B.CH
 Acq On : 17 Dec 2021 12:13
 Operator : AJ\MA
 Sample : AR1242CCC500
 Misc :
 ALS Vial : 4 Sample Multiplier: 1

Instrument :
 ECD_O
 ClientSampleId :
 AR1242CCC500

Integration File signal 1: autoint1.e
 Integration File signal 2: autoint2.e
 Quant Time: Dec 17 12:27:57 2021
 Quant Method : Z:\pestpcbsrv\HPCHEM1\ECD_O\methods\PO121521.M
 Quant Title : GC EXTRACTABLES
 QLast Update : Thu Dec 16 04:05:27 2021
 Response via : Initial Calibration
 Integrator: ChemStation 6890 Scale Mode: Small noise peaks clipped

Volume Inj. : 2 µl
 Signal #1 Phase : ZB-MR1 Signal #2 Phase: ZB-MR2
 Signal #1 Info : 30Mx0.32mmx 0.50µ Signal #2 Info : 30M x 0.32mm x 0.25µm

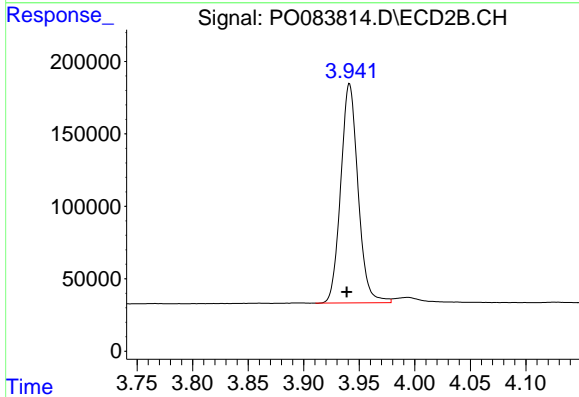




#1 Tetrachloro-m-xylene

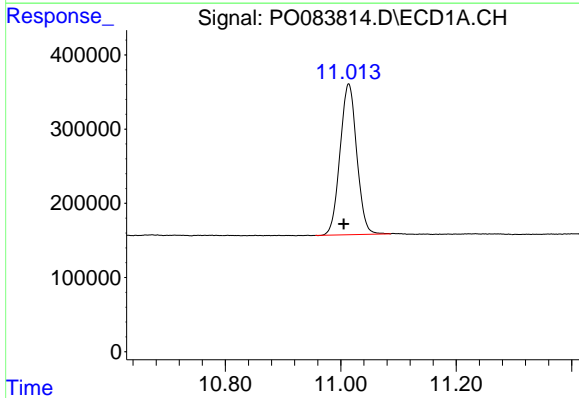
R.T.: 4.936 min
 Delta R.T.: 0.003 min
 Response: 5652256
 Conc: 59.33 ng/ml

Instrument :
 ECD_O
 ClientSampleId :
 AR1242CCC500



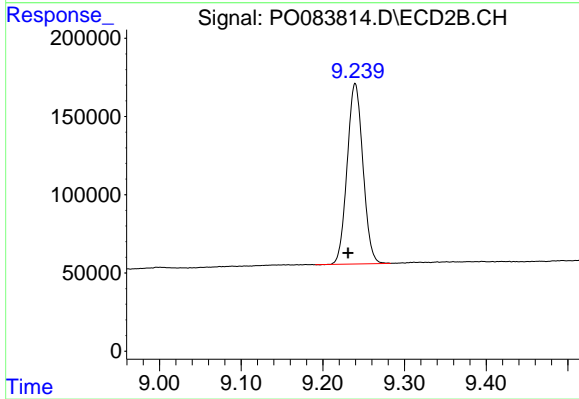
#1 Tetrachloro-m-xylene

R.T.: 3.941 min
 Delta R.T.: 0.003 min
 Response: 1643777
 Conc: 56.04 ng/ml



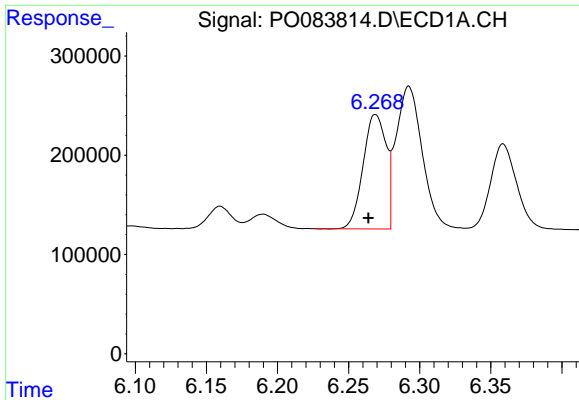
#2 Decachlorobiphenyl

R.T.: 11.014 min
 Delta R.T.: 0.009 min
 Response: 4089720
 Conc: 59.71 ng/ml



#2 Decachlorobiphenyl

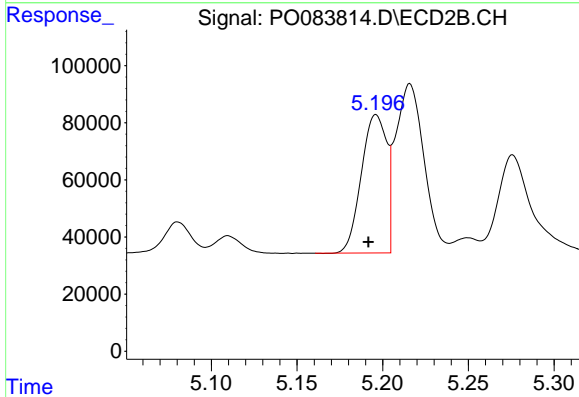
R.T.: 9.240 min
 Delta R.T.: 0.009 min
 Response: 1549525
 Conc: 55.18 ng/ml



#16 AR-1242-1

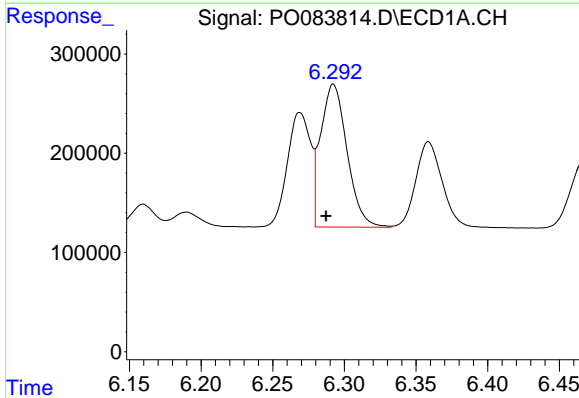
R.T.: 6.269 min
 Delta R.T.: 0.005 min
 Response: 1298923
 Conc: 545.28 ng/ml

Instrument :
 ECD_O
 ClientSampleId :
 AR1242CCC500



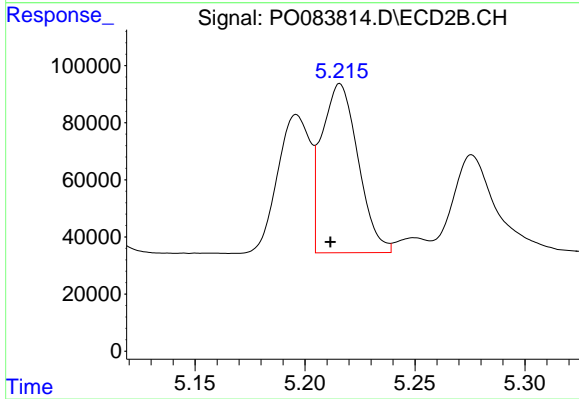
#16 AR-1242-1

R.T.: 5.196 min
 Delta R.T.: 0.004 min
 Response: 497841
 Conc: 526.71 ng/ml



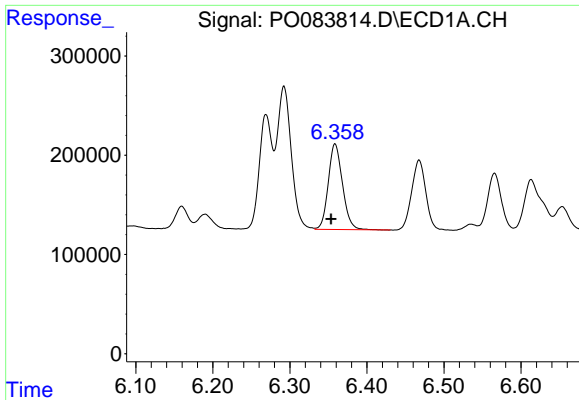
#17 AR-1242-2

R.T.: 6.292 min
 Delta R.T.: 0.005 min
 Response: 1850878
 Conc: 543.53 ng/ml



#17 AR-1242-2

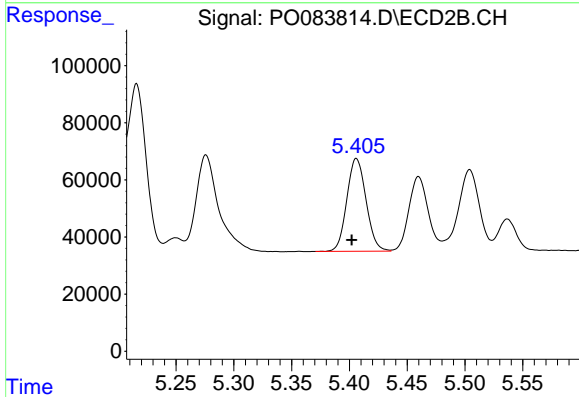
R.T.: 5.216 min
 Delta R.T.: 0.004 min
 Response: 681188
 Conc: 519.84 ng/ml



#18 AR-1242-3

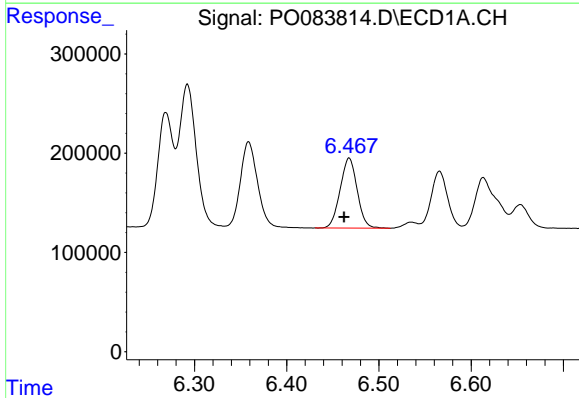
R.T.: 6.359 min
 Delta R.T.: 0.005 min
 Response: 1110676
 Conc: 542.69 ng/ml

Instrument :
 ECD_O
 ClientSampleId :
 AR1242CCC500



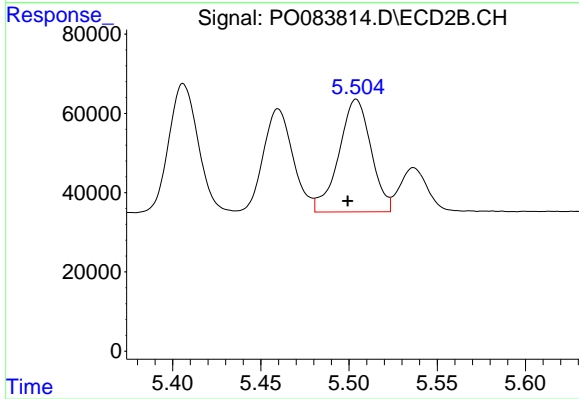
#18 AR-1242-3

R.T.: 5.406 min
 Delta R.T.: 0.004 min
 Response: 376004
 Conc: 535.33 ng/ml



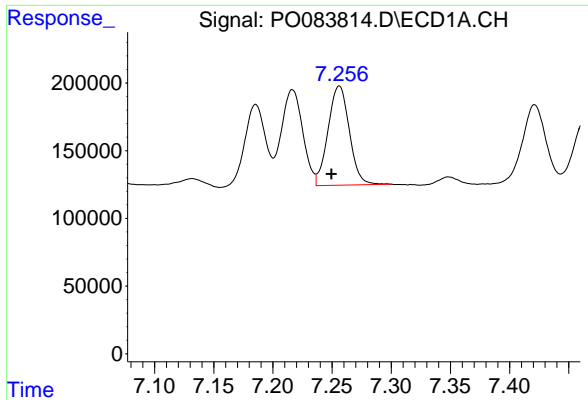
#19 AR-1242-4

R.T.: 6.468 min
 Delta R.T.: 0.005 min
 Response: 904889
 Conc: 541.77 ng/ml



#19 AR-1242-4

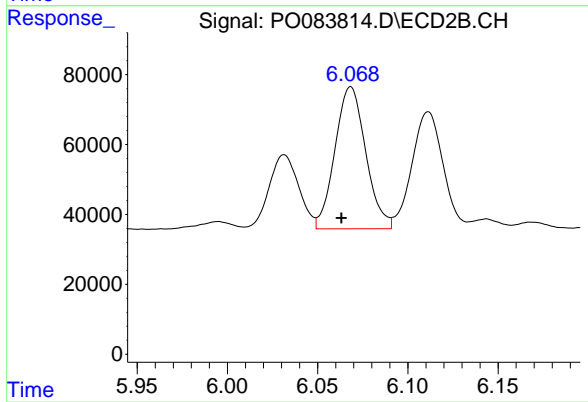
R.T.: 5.504 min
 Delta R.T.: 0.005 min
 Response: 360821
 Conc: 549.38 ng/ml



#20 AR-1242-5

R.T.: 7.256 min
Delta R.T.: 0.007 min
Response: 919920
Conc: 530.78 ng/ml

Instrument :
ECD_O
ClientSampleId :
AR1242CCC500



#20 AR-1242-5

R.T.: 6.068 min
Delta R.T.: 0.005 min
Response: 483025
Conc: 549.89 ng/ml