

Data Path : Z:\pestpcbsrv\HPCHEM1\ECD_O\Data\PO121724\
 Data File : PO108599.D
 Signal(s) : Signal #1: ECD1A.ch Signal #2: ECD2B.ch
 Acq On : 17 Dec 2024 19:42
 Operator : YP/AJ
 Sample : P5307-10
 Misc :
 ALS Vial : 25 Sample Multiplier: 1

Instrument :
 ECD_O
ClientSampleId :
 1907-BLDG-OFF-WHITE

Integration File signal 1: autoint1.e
 Integration File signal 2: autoint2.e
 Quant Time: Dec 18 00:18:25 2024
 Quant Method : Z:\pestpcbsrv\HPCHEM1\ECD_O\methods\PO120624.M
 Quant Title : GC EXTRACTABLES
 QLast Update : Sat Dec 07 05:58:15 2024
 Response via : Initial Calibration
 Integrator: ChemStation

Volume Inj. : 2 µl
 Signal #1 Phase : ZB-MR1 Signal #2 Phase: ZB-MR2
 Signal #1 Info : 30Mx0.32mmx 0.50µ Signal #2 Info : 30M x 0.32mm x 0.25µm

Compound	RT#1	RT#2	Resp#1	Resp#2	ng/ml	ng/ml

System Monitoring Compounds						
1) SA Tetrachlo...	3.705	3.703	139.8E6	89207636	16.070	17.597
2) SA Decachlor...	8.776	8.725	79256012	54205032	10.851	13.989 #

Target Compounds

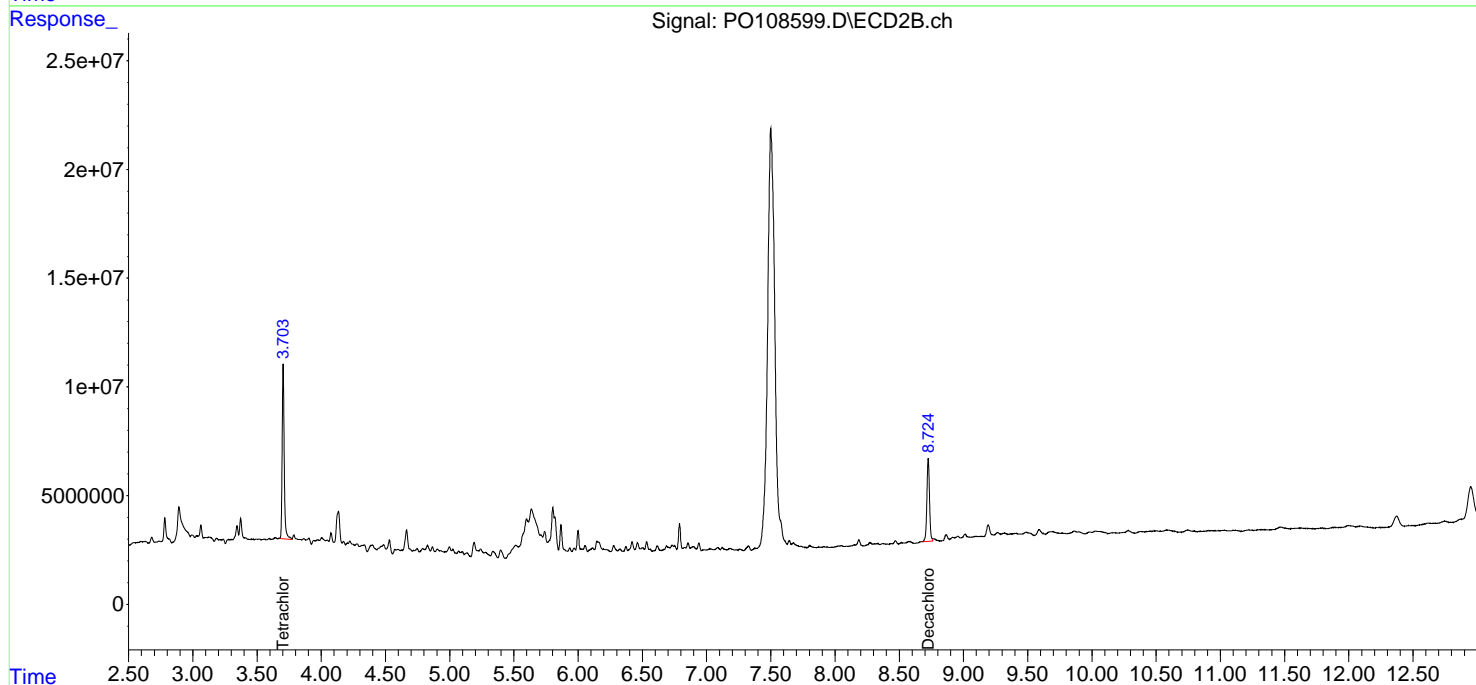
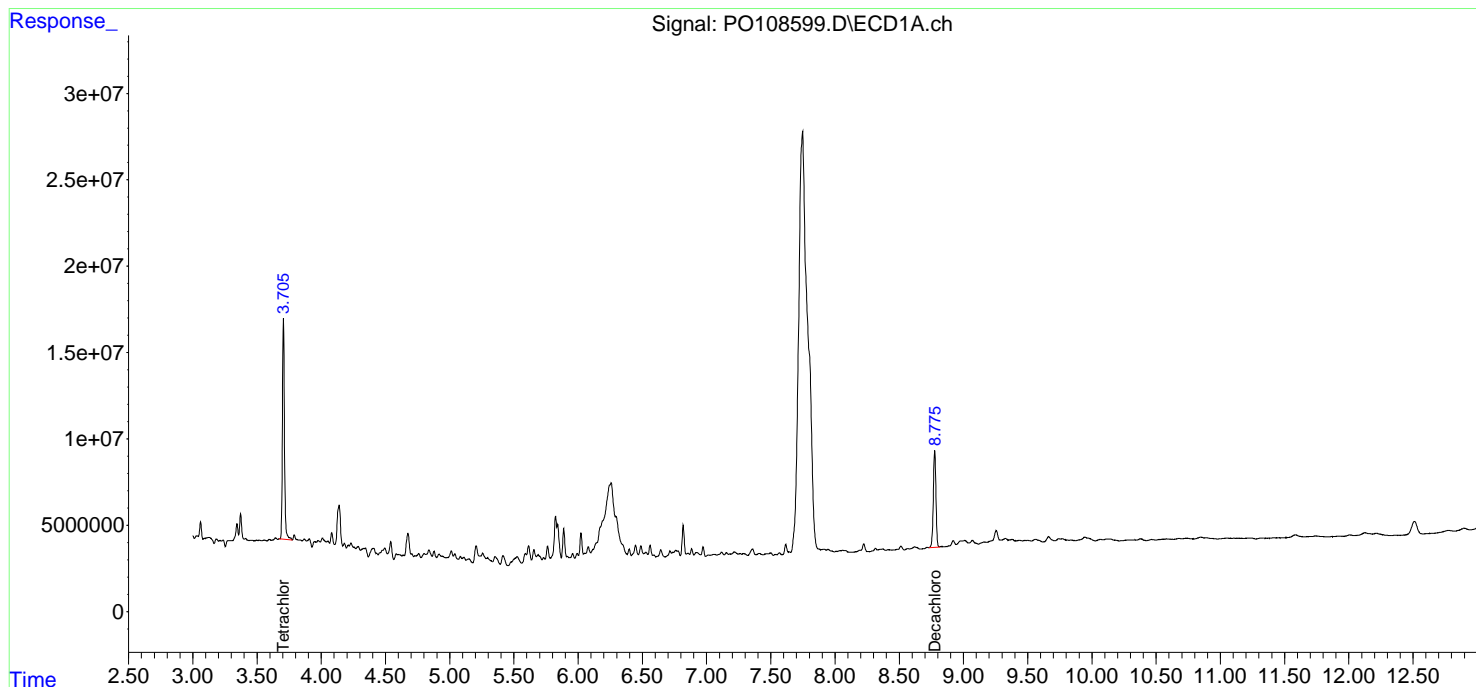
(f)=RT Delta > 1/2 Window (#)=Amounts differ by > 25% (m)=manual int.

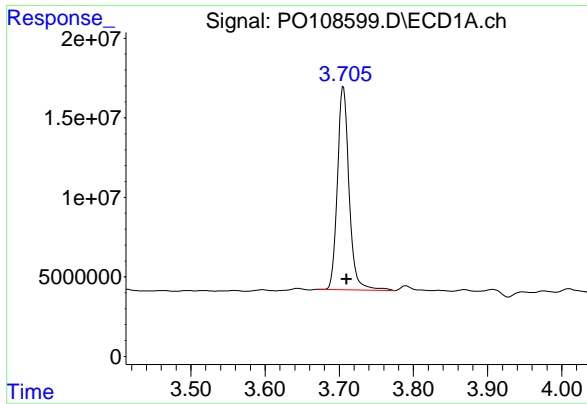
Data Path : Z:\pestpcbsrv\HPCHEM1\ECD_O\Data\PO121724\
 Data File : PO108599.D
 Signal(s) : Signal #1: ECD1A.ch Signal #2: ECD2B.ch
 Acq On : 17 Dec 2024 19:42
 Operator : YP/AJ
 Sample : P5307-10
 Misc :
 ALS Vial : 25 Sample Multiplier: 1

Instrument :
 ECD_O
 ClientSampleId :
 1907-BLDG-OFF-WHITE

Integration File signal 1: autoint1.e
 Integration File signal 2: autoint2.e
 Quant Time: Dec 18 00:18:25 2024
 Quant Method : Z:\pestpcbsrv\HPCHEM1\ECD_O\methods\PO120624.M
 Quant Title : GC EXTRACTABLES
 QLast Update : Sat Dec 07 05:58:15 2024
 Response via : Initial Calibration
 Integrator: ChemStation

Volume Inj. : 2 µl
 Signal #1 Phase : ZB-MR1 Signal #2 Phase: ZB-MR2
 Signal #1 Info : 30Mx0.32mmx 0.50µm Signal #2 Info : 30M x 0.32mm x 0.25µm

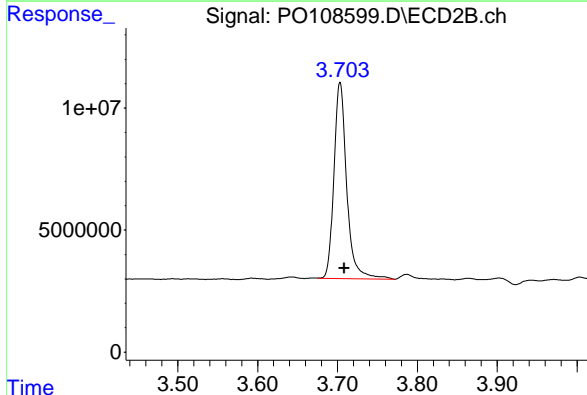




#1 Tetrachloro-m-xylene

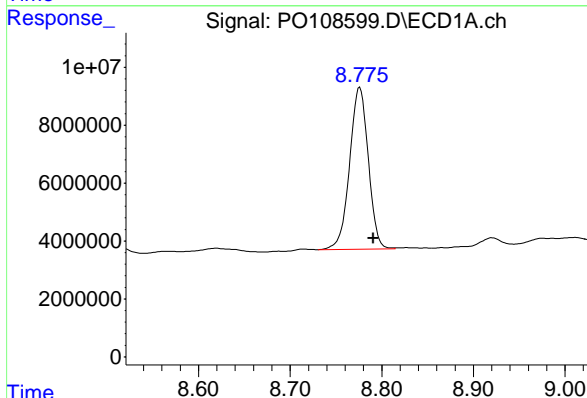
R.T.: 3.705 min
 Delta R.T.: -0.005 min
 Response: 139811206
 Conc: 16.07 ng/ml

Instrument :
 ECD_O
 ClientSampleId :
 1907-BLDG-OFF-WHITE



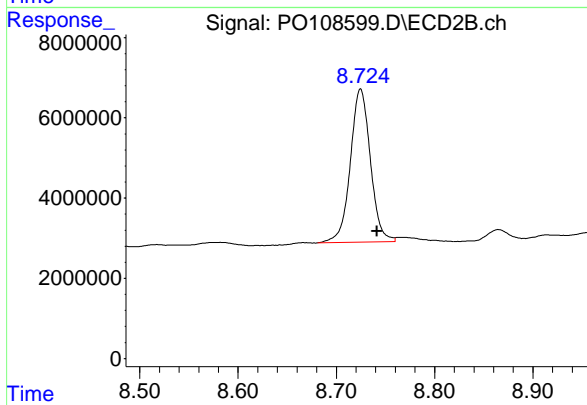
#1 Tetrachloro-m-xylene

R.T.: 3.703 min
 Delta R.T.: -0.005 min
 Response: 89207636
 Conc: 17.60 ng/ml



#2 Decachlorobiphenyl

R.T.: 8.776 min
 Delta R.T.: -0.015 min
 Response: 79256012
 Conc: 10.85 ng/ml



#2 Decachlorobiphenyl

R.T.: 8.725 min
 Delta R.T.: -0.017 min
 Response: 54205032
 Conc: 13.99 ng/ml