

Data Path : Z:\pestpcbsrv\HPCHEM1\ECD\_0\Data\PO121820\  
 Data File : PO073944.D  
 Signal(s) : Signal #1: ECD1A.CH Signal #2: ECD2B.CH  
 Acq On : 18 Dec 2020 15:48  
 Operator : DD\AJ  
 Sample : L5127-01  
 Misc :  
 ALS Vial : 14 Sample Multiplier: 1

**Instrument :**  
 ECD\_0  
**ClientSampleId :**  
 SU-02-121620

**Manual Integrations**  
**APPROVED**

Ankita  
 12/21/2020 12:25:52 PM

Integration File signal 1: autoint1.e  
 Integration File signal 2: autoint2.e  
 Quant Time: Dec 18 16:51:20 2020  
 Quant Method : Z:\pestpcbsrv\HPCHEM1\ECD\_0\methods\PO121020.M  
 Quant Title : GC EXTRACTABLES  
 QLast Update : Fri Dec 11 03:58:06 2020  
 Response via : Initial Calibration  
 Integrator: ChemStation 6890 Scale Mode: Small noise peaks clipped

Volume Inj. : 2 µl  
 Signal #1 Phase : ZB-MR1 Signal #2 Phase: ZB-MR2  
 Signal #1 Info : 30Mx0.32mmx 0.50µ Signal #2 Info : 30M x 0.32mm x 0.25µm

Compound	RT#1	RT#2	Resp#1	Resp#2	ng/ml	ng/ml
-----						
System Monitoring Compounds						
1) SA Tetrachlo...	4.935	3.995	1992815	1244897	21.797m	23.210
2) SA Decachlor...	10.957	9.258	1698042	906053	20.547	19.364

Target Compounds

(f)=RT Delta > 1/2 Window (#)=Amounts differ by > 25% (m)=manual int.

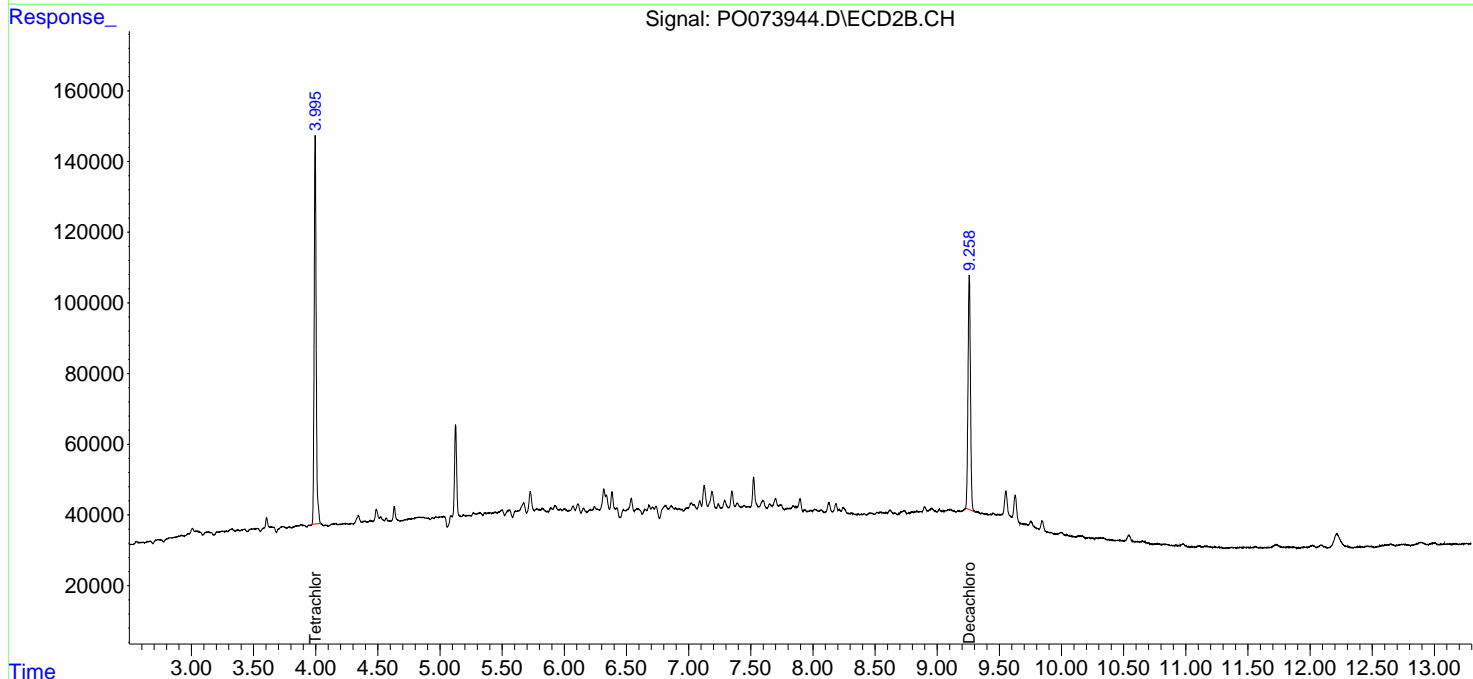
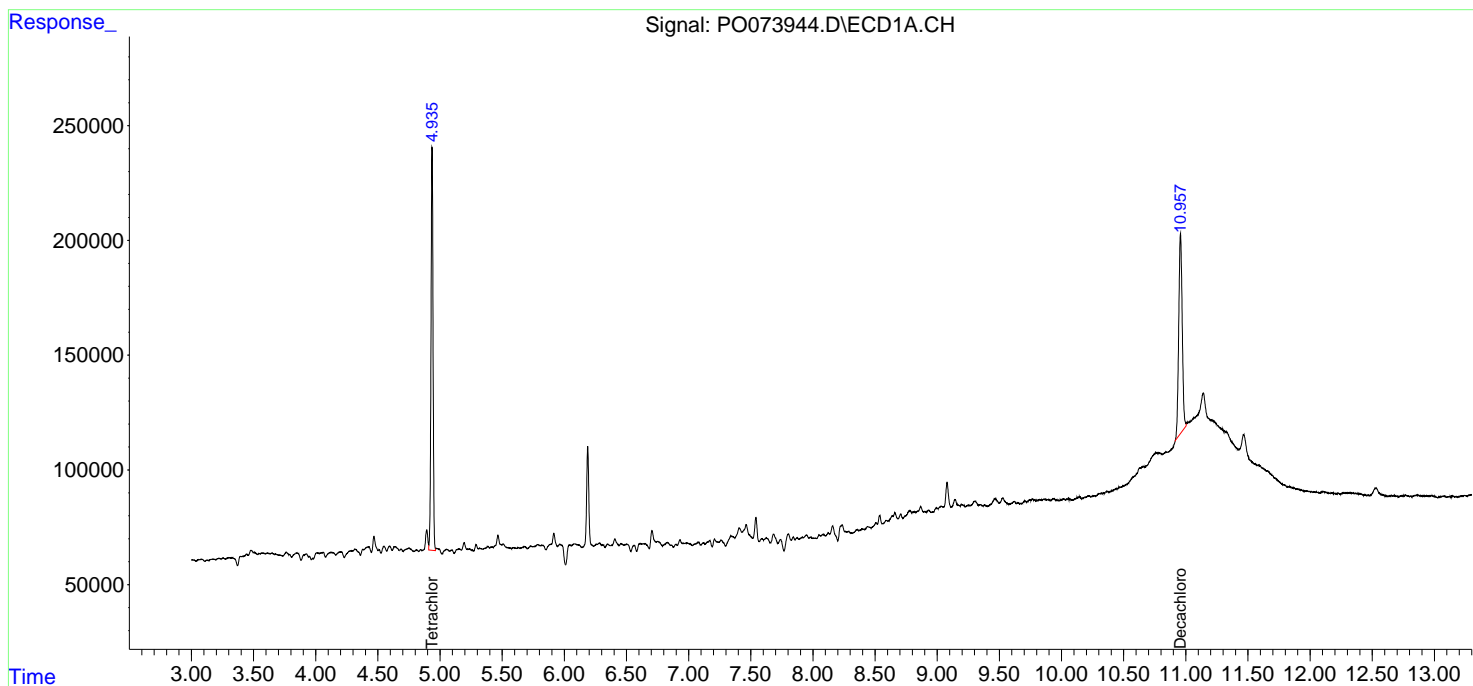
Data Path : Z:\pestpcbsrv\HPCHEM1\ECD\_0\Data\PO121820\  
 Data File : PO073944.D  
 Signal(s) : Signal #1: ECD1A.CH Signal #2: ECD2B.CH  
 Acq On : 18 Dec 2020 15:48  
 Operator : DD\AJ  
 Sample : L5127-01  
 Misc :  
 ALS Vial : 14 Sample Multiplier: 1

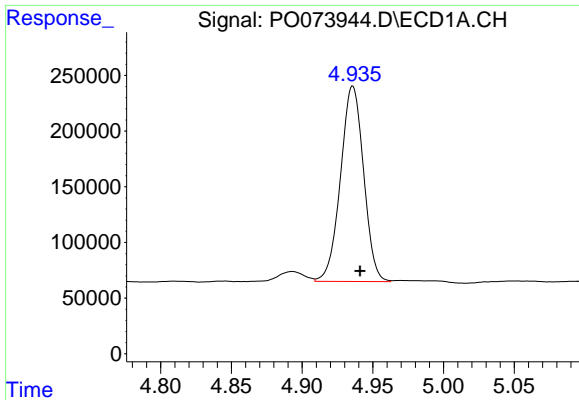
**Instrument :**  
 ECD\_O  
**ClientSampled :**  
 SU-02-121620

**Manual Integrations**  
**APPROVED**  
 Ankita  
 12/21/2020 12:25:52 PM

Integration File signal 1: autoint1.e  
 Integration File signal 2: autoint2.e  
 Quant Time: Dec 18 16:51:20 2020  
 Quant Method : Z:\pestpcbsrv\HPCHEM1\ECD\_0\methods\PO121020.M  
 Quant Title : GC EXTRACTABLES  
 QLast Update : Fri Dec 11 03:58:06 2020  
 Response via : Initial Calibration  
 Integrator: ChemStation 6890 Scale Mode: Small noise peaks clipped

Volume Inj. : 2 µl  
 Signal #1 Phase : ZB-MR1 Signal #2 Phase: ZB-MR2  
 Signal #1 Info : 30Mx0.32mmx 0.50µ Signal #2 Info : 30M x 0.32mm x 0.25µm

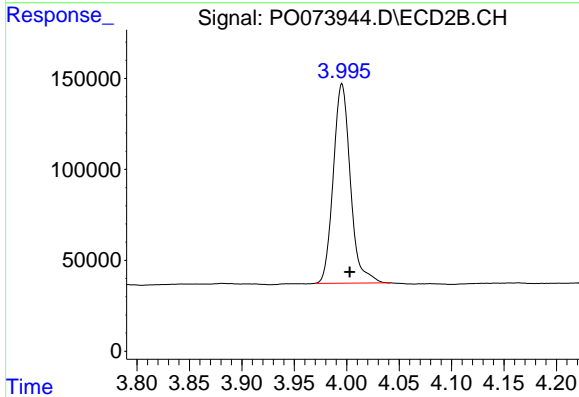




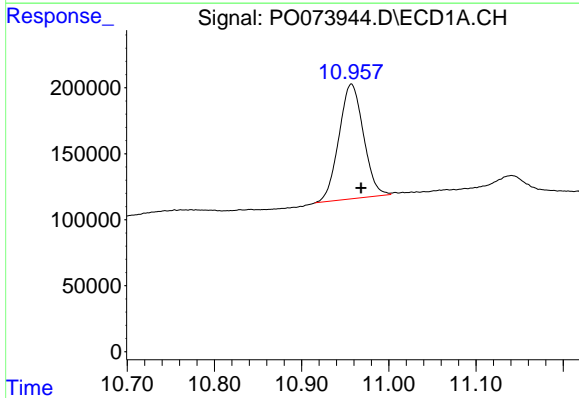
#1 Tetrachloro-m-xylene  
 R.T.: 4.935 min  
 Delta R.T.: -0.006 min  
 Response: 1992815  
 Conc: 21.80 ng/ml m

Instrument :  
 ECD\_O  
 ClientSampled :  
 SU-02-121620

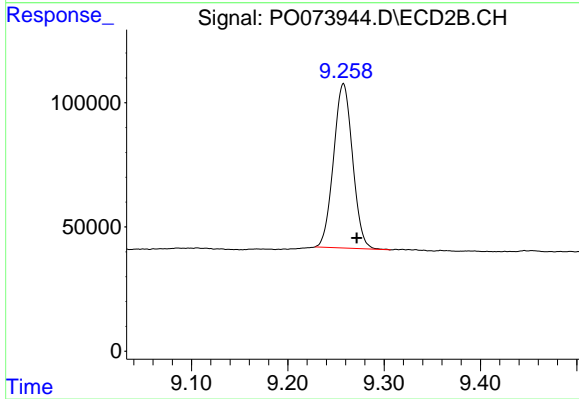
Manual Integrations  
 APPROVED  
 Ankita  
 12/21/2020 12:25:52 PM



#1 Tetrachloro-m-xylene  
 R.T.: 3.995 min  
 Delta R.T.: -0.008 min  
 Response: 1244897  
 Conc: 23.21 ng/ml



#2 Decachlorobiphenyl  
 R.T.: 10.957 min  
 Delta R.T.: -0.011 min  
 Response: 1698042  
 Conc: 20.55 ng/ml



#2 Decachlorobiphenyl  
 R.T.: 9.258 min  
 Delta R.T.: -0.014 min  
 Response: 906053  
 Conc: 19.36 ng/ml