

Data Path : Z:\pestpcbsrv\HPCHEM1\ECD_0\Data\PO121823\
 Data File : PO100558.D
 Signal(s) : Signal #1: ECD1A.ch Signal #2: ECD2B.ch
 Acq On : 18 Dec 2023 18:15
 Operator : YP/AJ
 Sample : PB157864BL
 Misc :
 ALS Vial : 20 Sample Multiplier: 1

Instrument :
 ECD_0
ClientSampleId :
 PB157864BL

Manual Integrations
APPROVED

Reviewed By :Yogesh Patel 12/19/2023
 Supervised By :Ankita Jodhani 12/19/2023

Integration File signal 1: autoint1.e
 Integration File signal 2: autoint2.e
 Quant Time: Dec 19 00:52:43 2023
 Quant Method : Z:\pestpcbsrv\HPCHEM1\ECD_0\methods\PO121523.M
 Quant Title : GC EXTRACTABLES
 QLast Update : Sat Dec 16 05:19:37 2023
 Response via : Initial Calibration
 Integrator: ChemStation

Volume Inj. : 2 µl
 Signal #1 Phase : ZB-MR1 Signal #2 Phase: ZB-MR2
 Signal #1 Info : 30Mx0.32mmx 0.50µ Signal #2 Info : 30M x 0.32mm x 0.25µm

Compound	RT#1	RT#2	Resp#1	Resp#2	ng/ml	ng/ml

System Monitoring Compounds						
1) SA Tetrachlo...	4.473	3.698	35060635	33494843	22.164	22.058
2) SA Decachlor...	10.345	8.781	23081310	20600322	20.556	16.542m

Target Compounds

(f)=RT Delta > 1/2 Window (#)=Amounts differ by > 25% (m)=manual int.

Data Path : Z:\pestpcbsrv\HPCHEM1\ECD_0\Data\PO121823\
 Data File : PO100558.D
 Signal(s) : Signal #1: ECD1A.ch Signal #2: ECD2B.ch
 Acq On : 18 Dec 2023 18:15
 Operator : YP/AJ
 Sample : PB157864BL
 Misc :
 ALS Vial : 20 Sample Multiplier: 1

Instrument :

ECD_0

ClientSampleID :

PB157864BL

Manual Integrations

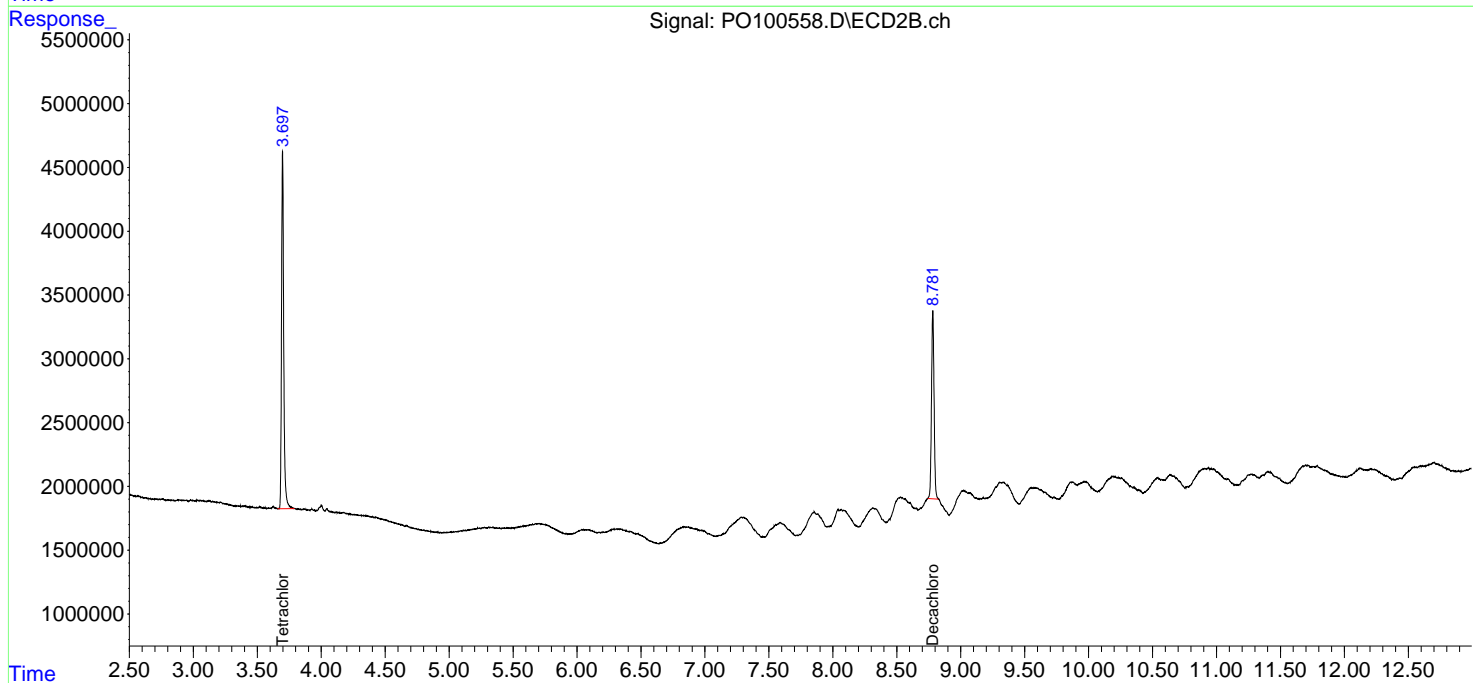
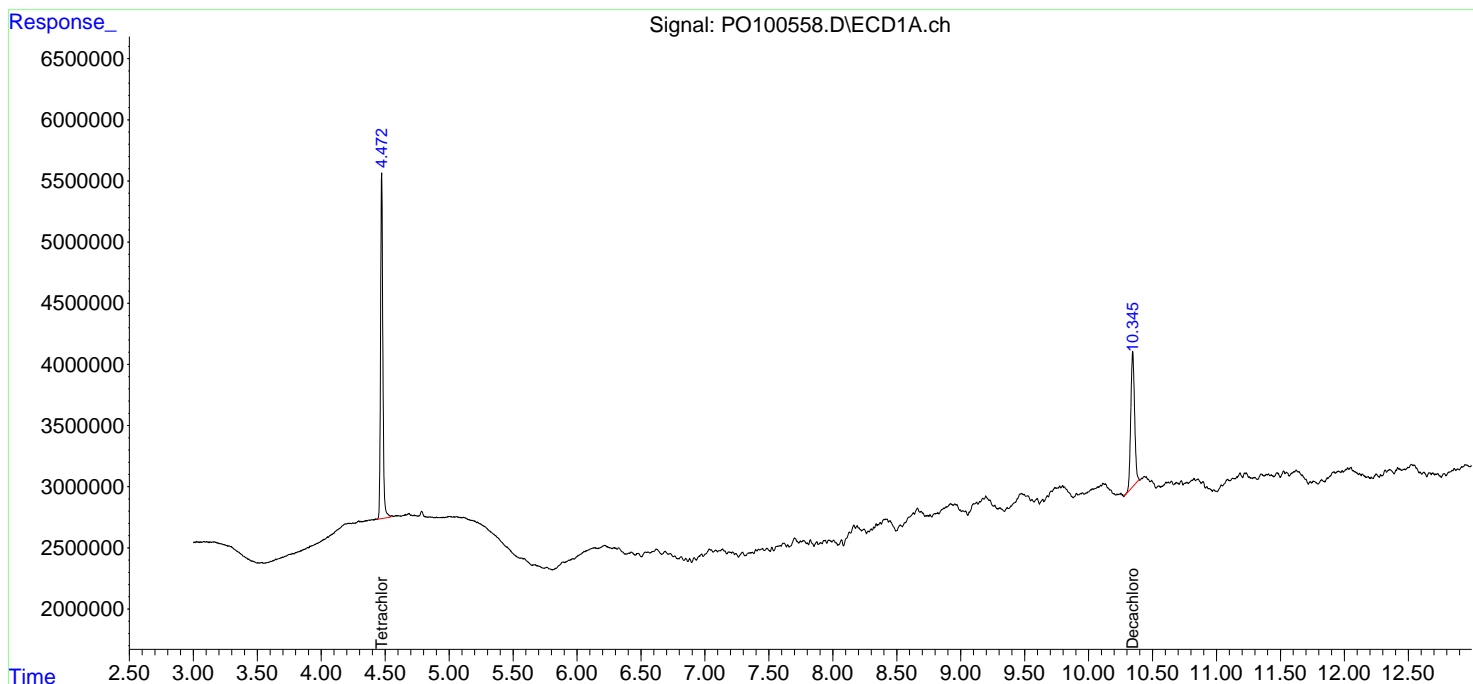
APPROVED

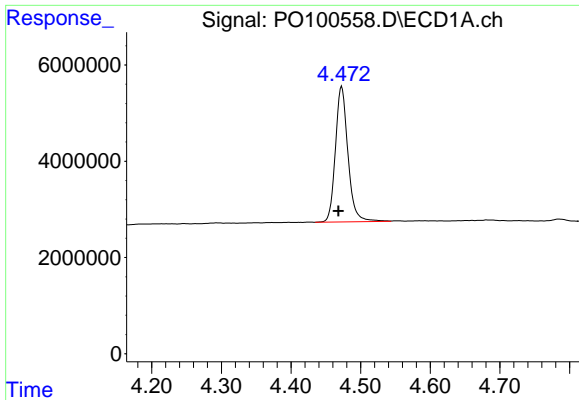
Reviewed By :Yogesh Patel 12/19/2023

Supervised By :Ankita Jodhani 12/19/2023

Integration File signal 1: autoint1.e
 Integration File signal 2: autoint2.e
 Quant Time: Dec 19 00:52:43 2023
 Quant Method : Z:\pestpcbsrv\HPCHEM1\ECD_0\methods\PO121523.M
 Quant Title : GC EXTRACTABLES
 QLast Update : Sat Dec 16 05:19:37 2023
 Response via : Initial Calibration
 Integrator: ChemStation

Volume Inj. : 2 µl
 Signal #1 Phase : ZB-MR1 Signal #2 Phase: ZB-MR2
 Signal #1 Info : 30Mx0.32mmx 0.50µ Signal #2 Info : 30M x 0.32mm x 0.25µm



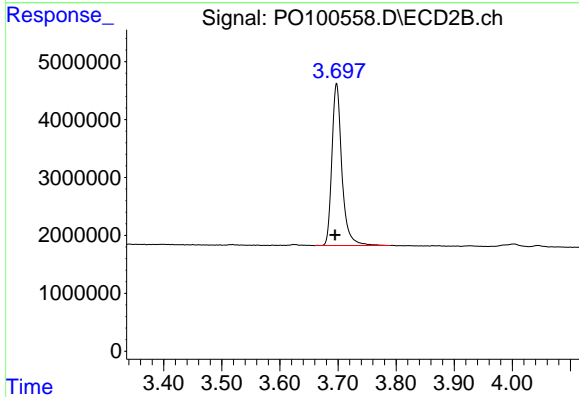


#1 Tetrachloro-m-xylene
 R.T.: 4.473 min
 Delta R.T.: 0.005 min
 Response: 35060635
 Conc: 22.16 ng/ml

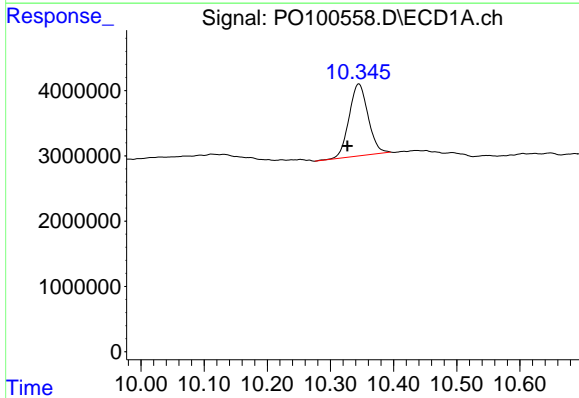
Instrument :
 ECD_O
 ClientSampleId :
 PB157864BL

Manual Integrations
 APPROVED

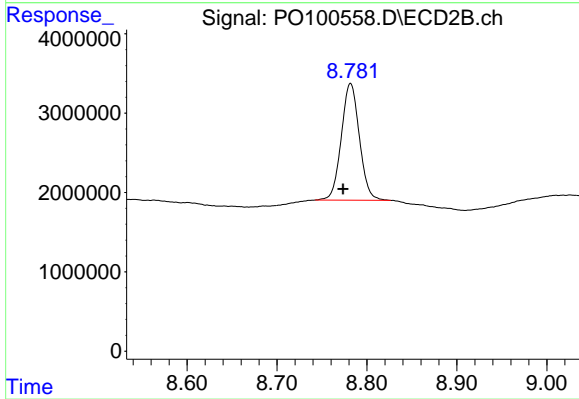
Reviewed By :Yogesh Patel 12/19/2023
 Supervised By :Ankita Jodhani 12/19/2023



#1 Tetrachloro-m-xylene
 R.T.: 3.698 min
 Delta R.T.: 0.003 min
 Response: 33494843
 Conc: 22.06 ng/ml



#2 Decachlorobiphenyl
 R.T.: 10.345 min
 Delta R.T.: 0.018 min
 Response: 23081310
 Conc: 20.56 ng/ml



#2 Decachlorobiphenyl
 R.T.: 8.781 min
 Delta R.T.: 0.008 min
 Response: 20600322
 Conc: 16.54 ng/ml m