

Data Path : Z:\pestpcbsrv\HPCHEM1\ECD\_0\Data\PO121918\  
 Data File : P0052740.D  
 Signal(s) : Signal #1: ECD1A.CH Signal #2: ECD2B.CH  
 Acq On : 19 Dec 2018 13:18  
 Operator : SM/SJ  
 Sample : J6426-12MS  
 Misc :  
 ALS Vial : 12 Sample Multiplier: 1

**Instrument :**  
 ECD\_0  
**ClientSampleId :**  
 P001-SS013B-3036-01MS

**Manual Integrations**  
**APPROVED**  
 Sohil  
 12/20/2018 9:24:51 AM

Integration File signal 1: autoint1.e  
 Integration File signal 2: autoint2.e  
 Quant Time: Dec 20 02:39:56 2018  
 Quant Method : Z:\pestpcbsrv\HPCHEM1\ECD\_0\methods\PO121518.M  
 Quant Title : GC EXTRACTABLES  
 QLast Update : Sun Dec 16 03:01:24 2018  
 Response via : Initial Calibration  
 Integrator: ChemStation 6890 Scale Mode: Small noise peaks clipped

Volume Inj. : 2 µl  
 Signal #1 Phase : ZB-MR1 Signal #2 Phase: ZB-MR2  
 Signal #1 Info : 30Mx0.32mmx 0.50µ Signal #2 Info : 30M x 0.32mm x 0.25µm

Compound	RT#1	RT#2	Resp#1	Resp#2	ng/ml	ng/ml
-----						
System Monitoring Compounds						
1) SA Tetrachlo...	4.248	3.272	17986807	4323257	22.936	20.402
2) SA Decachlor...	9.794	7.955	7944027	3121866	15.766m	14.150
Target Compounds						
3) L1 AR-1016-1	5.403	4.271	22796422	6450498	1113.890	1008.978
4) L1 AR-1016-2	5.428	4.285	56664062	13634741	1814.251	1111.775 #
5) L1 AR-1016-3	5.494	4.447	39408825	5066910	2081.672	917.039 #
6) L1 AR-1016-4	5.584	4.490	12419146	10168469	826.573m	2103.219 #
7) L1 AR-1016-5	5.874	4.685	20801364	8347738	1391.844	1296.874
31) L7 AR-1260-1	6.986	5.655	339.0E6	146.1E6	11605.439	10655.173
32) L7 AR-1260-2	7.241	5.840	383.3E6	145.8E6	10958.442	8774.014
33) L7 AR-1260-3	7.595	5.980	286.7E6	123.9E6	12319.551	8102.317 #
34) L7 AR-1260-4	7.821	6.431	270.5E6	96004944	10866.422	9541.169
35) L7 AR-1260-5	8.129	6.672	561.3E6	216.9E6	11447.639	9150.482
-----						

(f)=RT Delta > 1/2 Window (#)=Amounts differ by > 25% (m)=manual int.

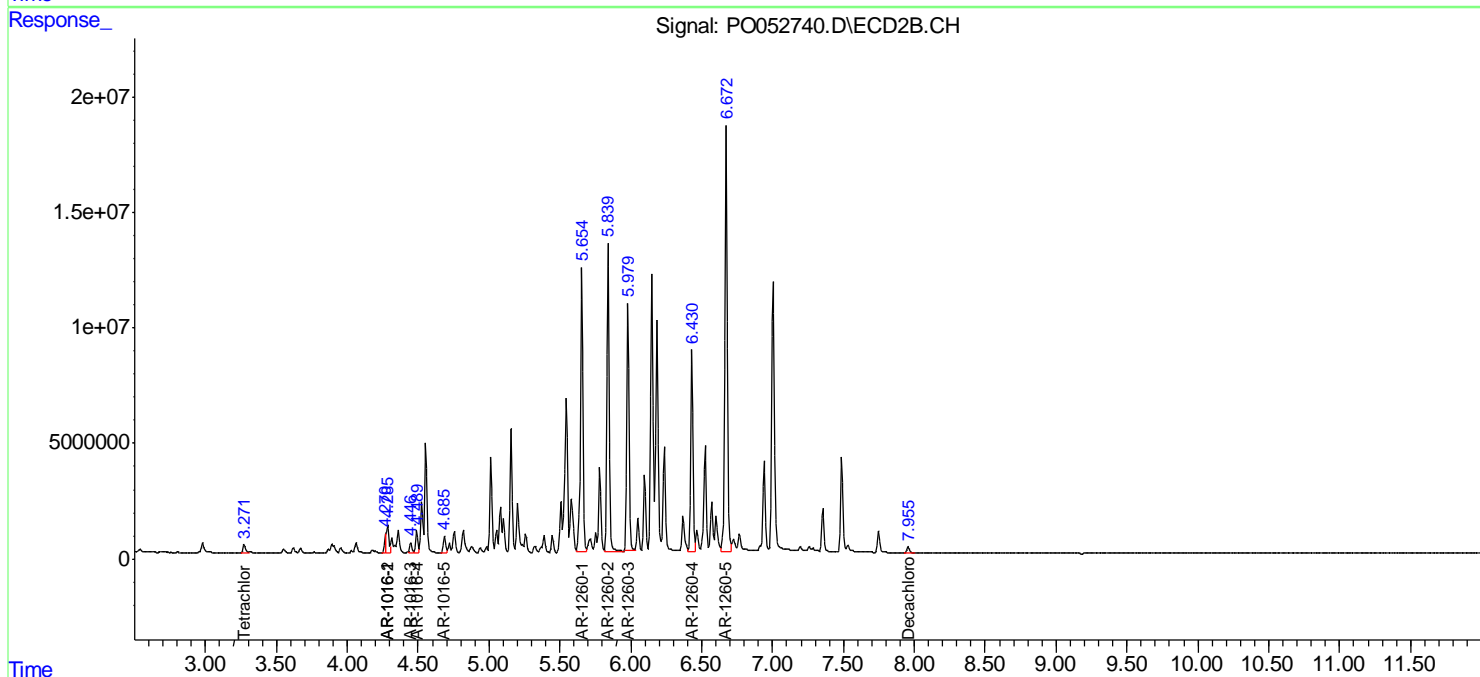
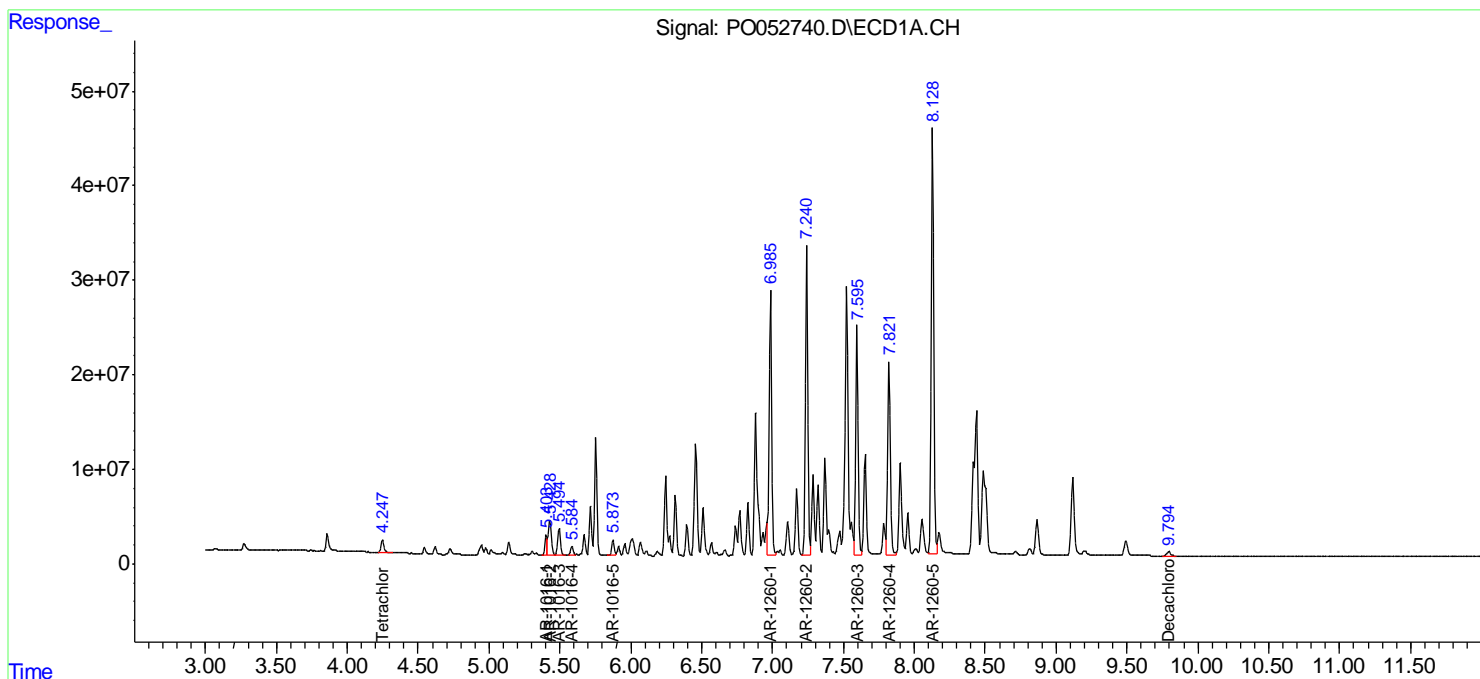
Data Path : Z:\pestpcbsrv\HPCHEM1\ECD\_O\Data\PO121918\  
Data File : PO052740.D  
Signal(s) : Signal #1: ECD1A.CH Signal #2: ECD2B.CH  
Acq On : 19 Dec 2018 13:18  
Operator : SM/SJ  
Sample : J6426-12MS  
Misc :  
ALS Vial : 12 Sample Multiplier: 1

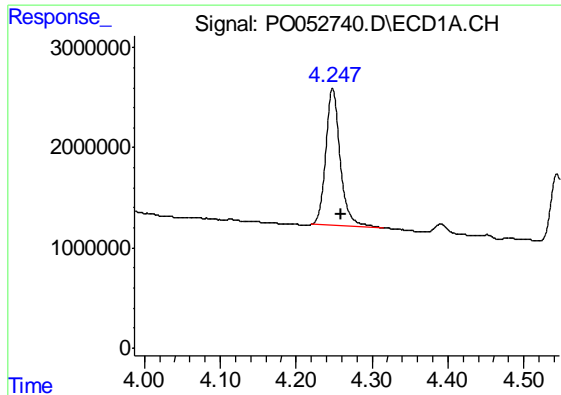
Instrument :  
ECD\_O  
Client Sampled :  
P001-SS013B-3036-01MS

Manual Integrations  
APPROVED  
Sohil  
12/20/2018 9:24:51 AM

Integration File signal 1: autoint1.e  
Integration File signal 2: autoint2.e  
Quant Time: Dec 20 02:39:56 2018  
Quant Method : Z:\pestpcbsrv\HPCHEM1\ECD\_O\methods\PO121518.M  
Quant Title : GC EXTRACTABLES  
QLast Update : Sun Dec 16 03:01:24 2018  
Response via : Initial Calibration  
Integrator: ChemStation 6890 Scale Mode: Small noise peaks clipped

Volume Inj. : 2 µl  
Signal #1 Phase : ZB-MR1 Signal #2 Phase: ZB-MR2  
Signal #1 Info : 30Mx0.32mmx 0.50µ Signal #2 Info : 30M x 0.32mm x 0.25µm





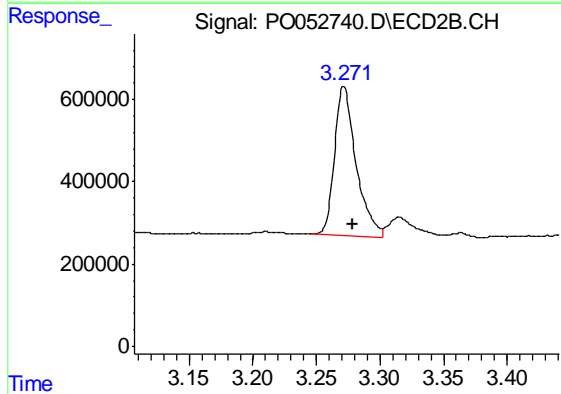
#1 Tetrachloro-m-xylene

R.T.: 4.248 min  
 Delta R.T.: -0.011 min  
 Response: 17986807  
 Conc: 22.94 ng/ml

Instrument :  
 ECD\_O  
 ClientSampleId :  
 P001-SS013B-3036-01MS

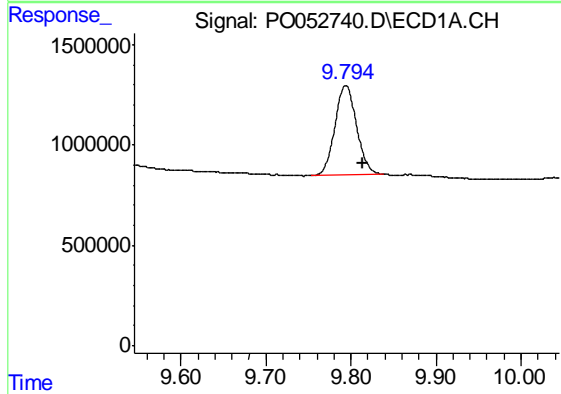
Manual Integrations  
 APPROVED

Sohil  
 12/20/2018 9:24:51 AM



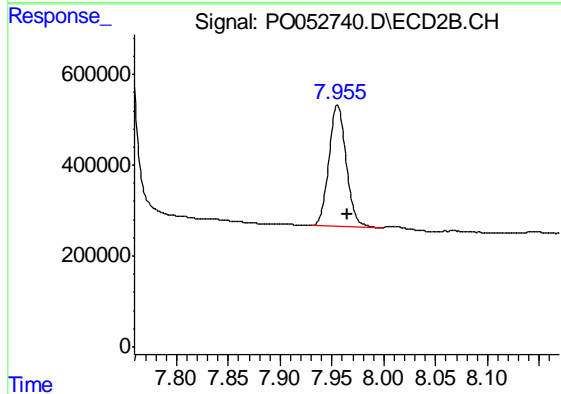
#1 Tetrachloro-m-xylene

R.T.: 3.272 min  
 Delta R.T.: -0.007 min  
 Response: 4323257  
 Conc: 20.40 ng/ml



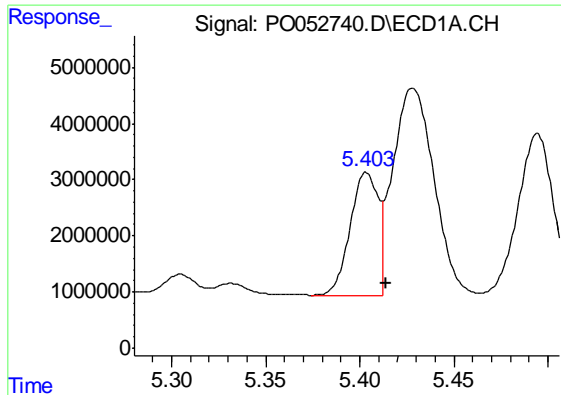
#2 Decachlorobiphenyl

R.T.: 9.794 min  
 Delta R.T.: -0.020 min  
 Response: 7944027  
 Conc: 15.77 ng/ml m



#2 Decachlorobiphenyl

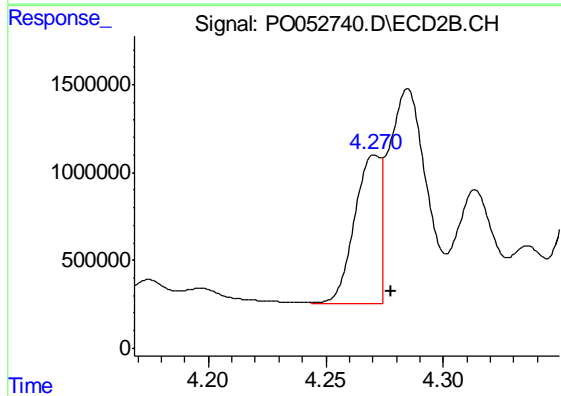
R.T.: 7.955 min  
 Delta R.T.: -0.010 min  
 Response: 3121866  
 Conc: 14.15 ng/ml



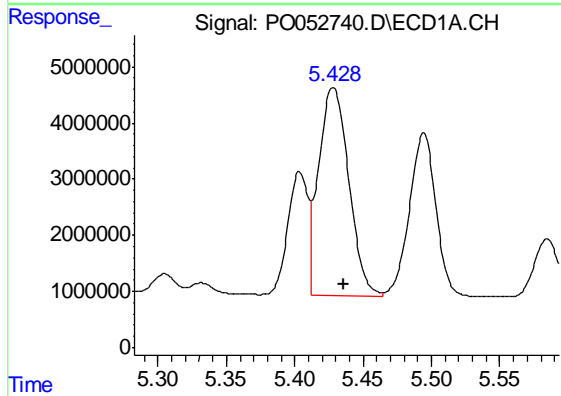
#3 AR-1016-1  
 R.T.: 5.403 min  
 Delta R.T.: -0.010 min  
 Response: 22796422  
 Conc: 1113.89 ng/ml

**Instrument :**  
 ECD\_O  
**ClientSampled :**  
 P001-SS013B-3036-01MS

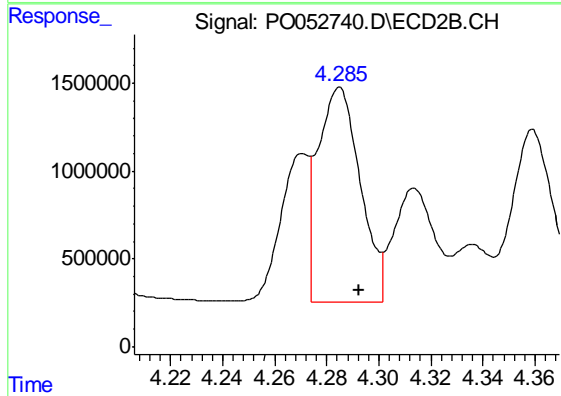
**Manual Integrations**  
**APPROVED**  
 Sohil  
 12/20/2018 9:24:51 AM



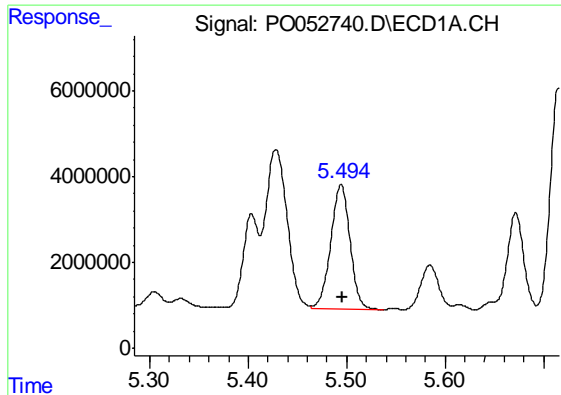
#3 AR-1016-1  
 R.T.: 4.271 min  
 Delta R.T.: -0.007 min  
 Response: 6450498  
 Conc: 1008.98 ng/ml



#4 AR-1016-2  
 R.T.: 5.428 min  
 Delta R.T.: -0.008 min  
 Response: 56664062  
 Conc: 1814.25 ng/ml



#4 AR-1016-2  
 R.T.: 4.285 min  
 Delta R.T.: -0.008 min  
 Response: 13634741  
 Conc: 1111.77 ng/ml



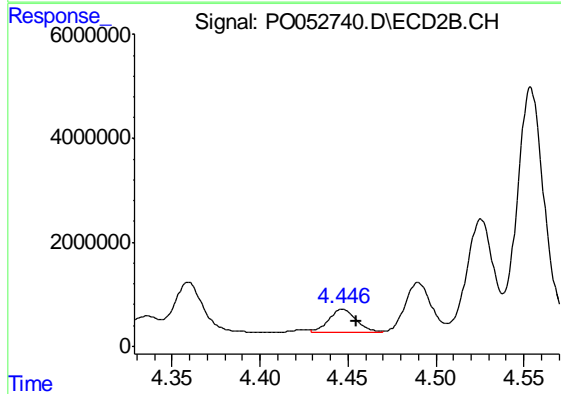
#5 AR-1016-3

R.T.: 5.494 min  
 Delta R.T.: -0.002 min  
 Response: 39408825  
 Conc: 2081.67 ng/ml

Instrument :  
 ECD\_O  
 ClientSampled :  
 P001-SS013B-3036-01MS

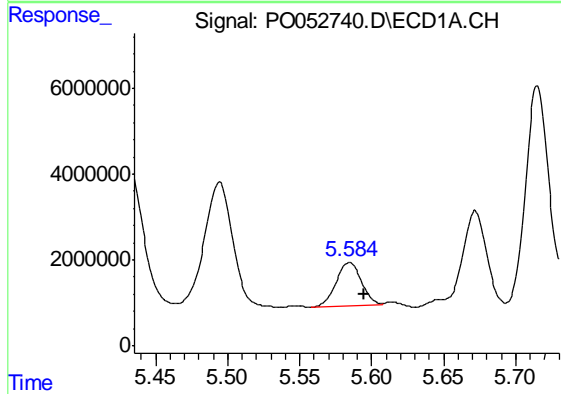
Manual Integrations  
 APPROVED

Sohil  
 12/20/2018 9:24:51 AM



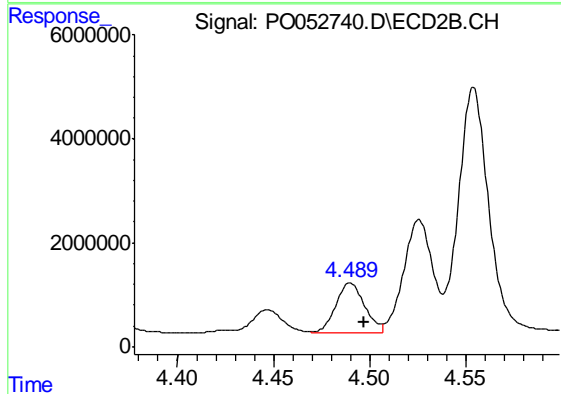
#5 AR-1016-3

R.T.: 4.447 min  
 Delta R.T.: -0.008 min  
 Response: 5066910  
 Conc: 917.04 ng/ml



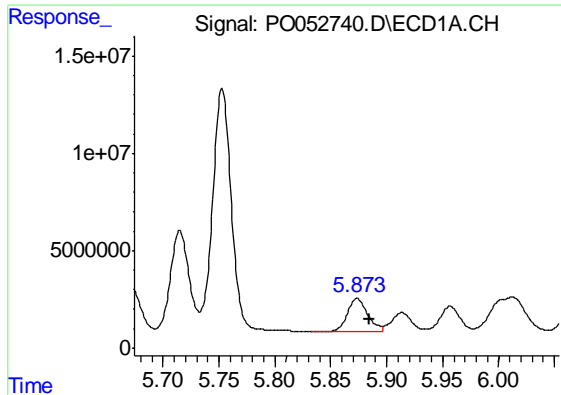
#6 AR-1016-4

R.T.: 5.584 min  
 Delta R.T.: -0.011 min  
 Response: 12419146  
 Conc: 826.57 ng/ml m



#6 AR-1016-4

R.T.: 4.490 min  
 Delta R.T.: -0.007 min  
 Response: 10168469  
 Conc: 2103.22 ng/ml



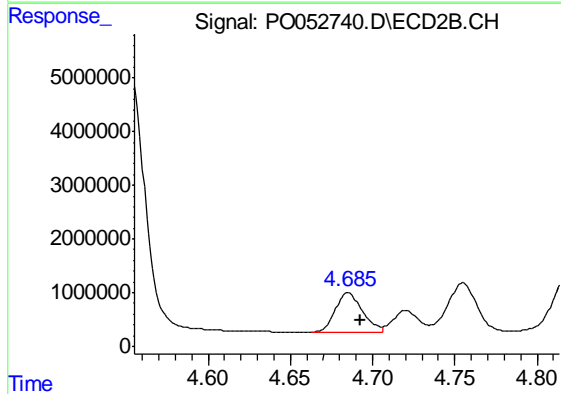
#7 AR-1016-5

R.T.: 5.874 min  
 Delta R.T.: -0.011 min  
 Response: 20801364  
 Conc: 1391.84 ng/ml

Instrument :  
 ECD\_O  
 ClientSampleId :  
 P001-SS013B-3036-01MS

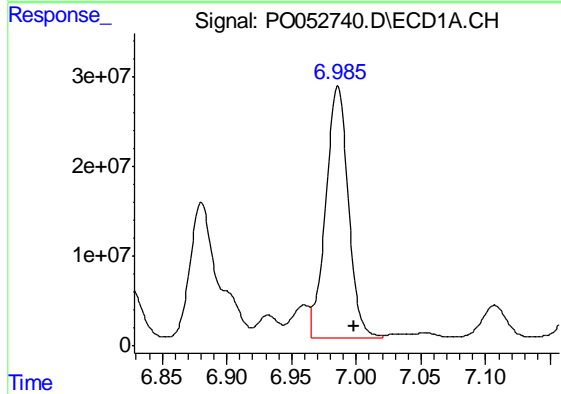
Manual Integrations  
 APPROVED

Sohil  
 12/20/2018 9:24:51 AM



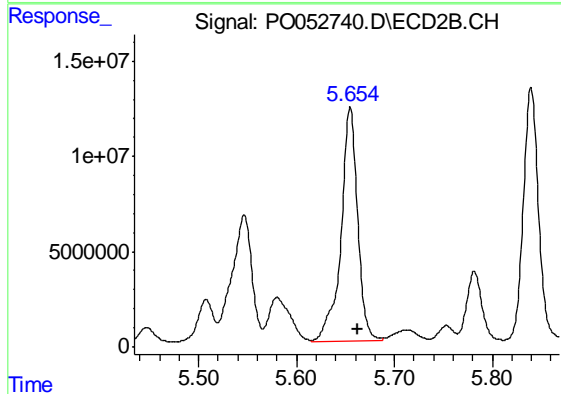
#7 AR-1016-5

R.T.: 4.685 min  
 Delta R.T.: -0.008 min  
 Response: 8347738  
 Conc: 1296.87 ng/ml



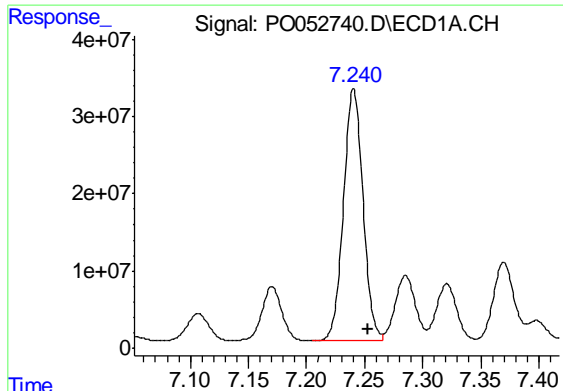
#31 AR-1260-1

R.T.: 6.986 min  
 Delta R.T.: -0.012 min  
 Response: 339036227  
 Conc: 11605.44 ng/ml



#31 AR-1260-1

R.T.: 5.655 min  
 Delta R.T.: -0.008 min  
 Response: 146123822  
 Conc: 10655.17 ng/ml



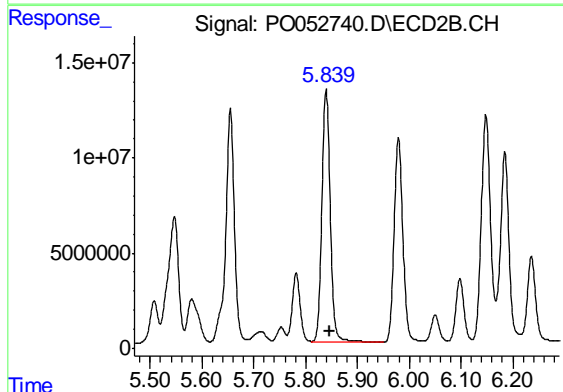
#32 AR-1260-2

R.T.: 7.241 min  
 Delta R.T.: -0.012 min  
 Response: 383304302  
 Conc: 10958.44 ng/ml

Instrument :  
 ECD\_O  
 ClientSampled :  
 P001-SS013B-3036-01MS

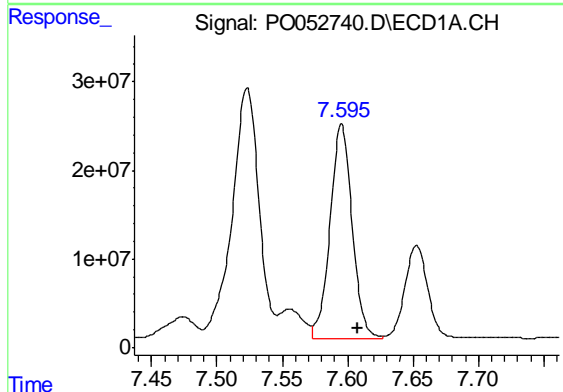
Manual Integrations  
 APPROVED

Sohil  
 12/20/2018 9:24:51 AM



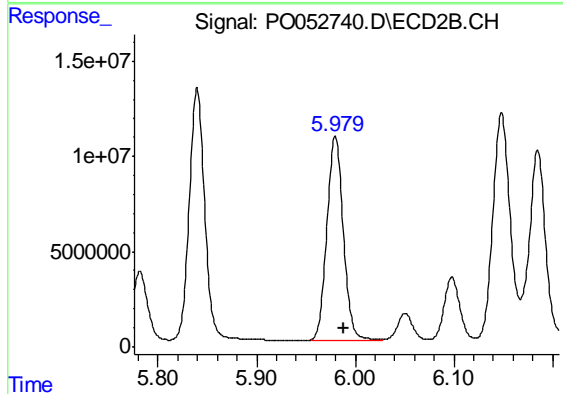
#32 AR-1260-2

R.T.: 5.840 min  
 Delta R.T.: -0.007 min  
 Response: 145801472  
 Conc: 8774.01 ng/ml



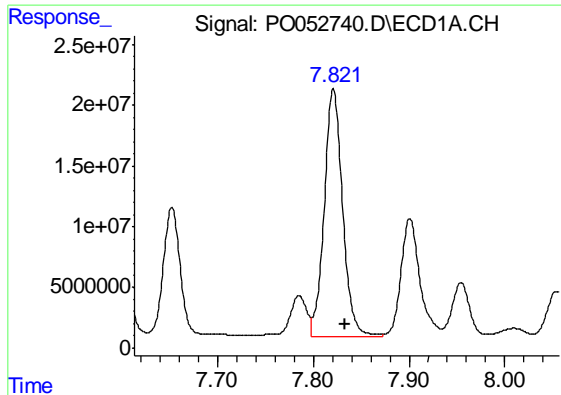
#33 AR-1260-3

R.T.: 7.595 min  
 Delta R.T.: -0.012 min  
 Response: 286726291  
 Conc: 12319.55 ng/ml



#33 AR-1260-3

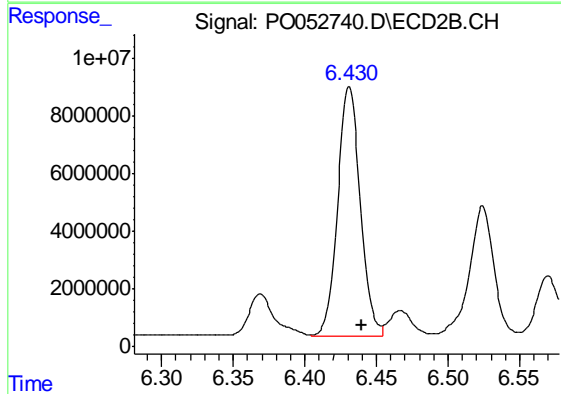
R.T.: 5.980 min  
 Delta R.T.: -0.009 min  
 Response: 123878450  
 Conc: 8102.32 ng/ml



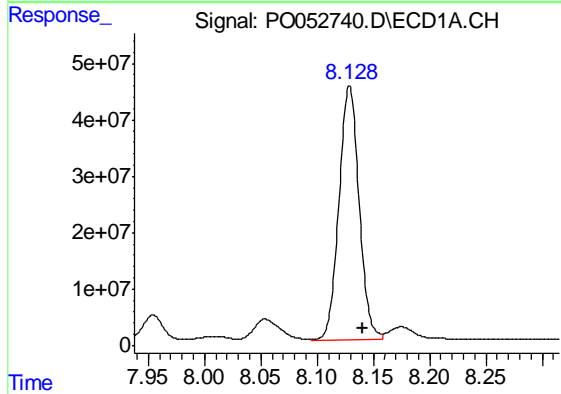
#34 AR-1260-4  
 R.T.: 7.821 min  
 Delta R.T.: -0.012 min  
 Response: 270540071  
 Conc: 10866.42 ng/ml

**Instrument :**  
 ECD\_O  
**ClientSampled :**  
 P001-SS013B-3036-01MS

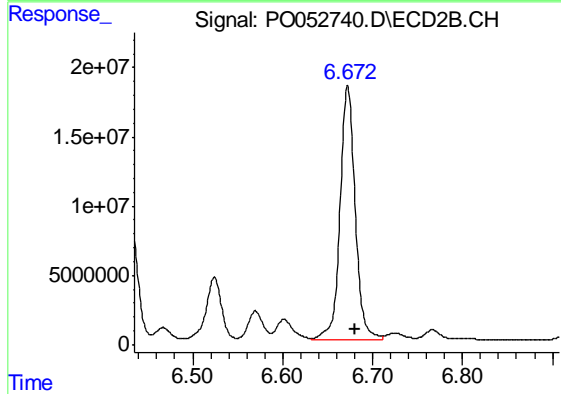
**Manual Integrations**  
**APPROVED**  
 Sohil  
 12/20/2018 9:24:51 AM



#34 AR-1260-4  
 R.T.: 6.431 min  
 Delta R.T.: -0.009 min  
 Response: 96004944  
 Conc: 9541.17 ng/ml



#35 AR-1260-5  
 R.T.: 8.129 min  
 Delta R.T.: -0.012 min  
 Response: 561257945  
 Conc: 11447.64 ng/ml



#35 AR-1260-5  
 R.T.: 6.672 min  
 Delta R.T.: -0.008 min  
 Response: 216895635  
 Conc: 9150.48 ng/ml