

Data Path : Z:\pestpcbsrv\HPCHEM1\ECD_0\Data\PO122018\
 Data File : PO052802.D
 Signal(s) : Signal #1: ECD1A.CH Signal #2: ECD2B.CH
 Acq On : 20 Dec 2018 12:51
 Operator : SM/SJ
 Sample : J6196-11
 Misc :
 ALS Vial : 10 Sample Multiplier: 1

Instrument :
 ECD_0
 ClientSampled :

Integration File signal 1: autoint1.e
 Integration File signal 2: autoint2.e
 Quant Time: Dec 20 16:17:15 2018
 Quant Method : Z:\pestpcbsrv\HPCHEM1\ECD_0\methods\PO121518.M
 Quant Title : GC EXTRACTABLES
 QLast Update : Sun Dec 16 03:01:24 2018
 Response via : Initial Calibration
 Integrator: ChemStation 6890 Scale Mode: Small noise peaks clipped

Volume Inj. : 2 µl
 Signal #1 Phase : ZB-MR1 Signal #2 Phase: ZB-MR2
 Signal #1 Info : 30Mx0.32mmx 0.50µ Signal #2 Info : 30M x 0.32mm x 0.25µm

Compound	RT#1	RT#2	Resp#1	Resp#2	ng/ml	ng/ml

System Monitoring Compounds						
1) SA Tetrachlo...	4.245	3.271	14631149	4069503	18.657	19.204
2) SA Decachlor...	9.789	7.951	6670421	2146637	13.239	9.730 #
Target Compounds						
3) L1 AR-1016-1	0.000	4.283	0	612109	N.D.	95.745 #
4) L1 AR-1016-2	0.000	4.283	0	612109	N.D.	49.911 #
5) L1 AR-1016-3	0.000	4.462	0	1065421	N.D.	192.826 #
6) L1 AR-1016-4	0.000	4.527	0	2185144	N.D.	451.969 #
7) L1 AR-1016-5	5.877	4.631	3379809	197991	226.147	30.759 #
9) L2 AR-1221-2	4.548	0.000	404922	0	74.187	N.D. #
12) L3 AR-1232-2	5.144	4.283	10816503	612109	1460.213	107.581 #
13) L3 AR-1232-3	0.000	4.462	0	1065421	N.D.	418.795 #
14) L3 AR-1232-4	0.000	4.527	0	2185144	N.D.	950.094 #
15) L3 AR-1232-5	5.729	4.631	1535568	197991	332.848	74.276 #
16) L4 AR-1242-1	0.000	4.283	0	612109	N.D.	112.221 #
17) L4 AR-1242-2	0.000	4.283	0	612109	N.D.	57.680 #
18) L4 AR-1242-3	0.000	4.462	0	1065421	N.D.	221.296 #
19) L4 AR-1242-4	0.000	4.527	0	2185144	N.D.	446.282 #
21) L5 AR-1248-1	0.000	4.283	0	612109	N.D.	138.102 #
22) L5 AR-1248-2	5.729	4.527	1535568	2185144	80.601	315.212 #
23) L5 AR-1248-3	5.877	4.527	3379809	2185144	156.403	314.626 #
24) L5 AR-1248-4	0.000	4.631	0	197991	N.D.	23.131 #
27) L6 AR-1254-2	6.462	5.202	616787	1127054	15.926	91.927 #
28) L6 AR-1254-3	6.838	0.000	1290361	0	32.751	N.D. #
32) L7 AR-1260-2	7.238	5.910	2021071	396598	57.781	23.866 #

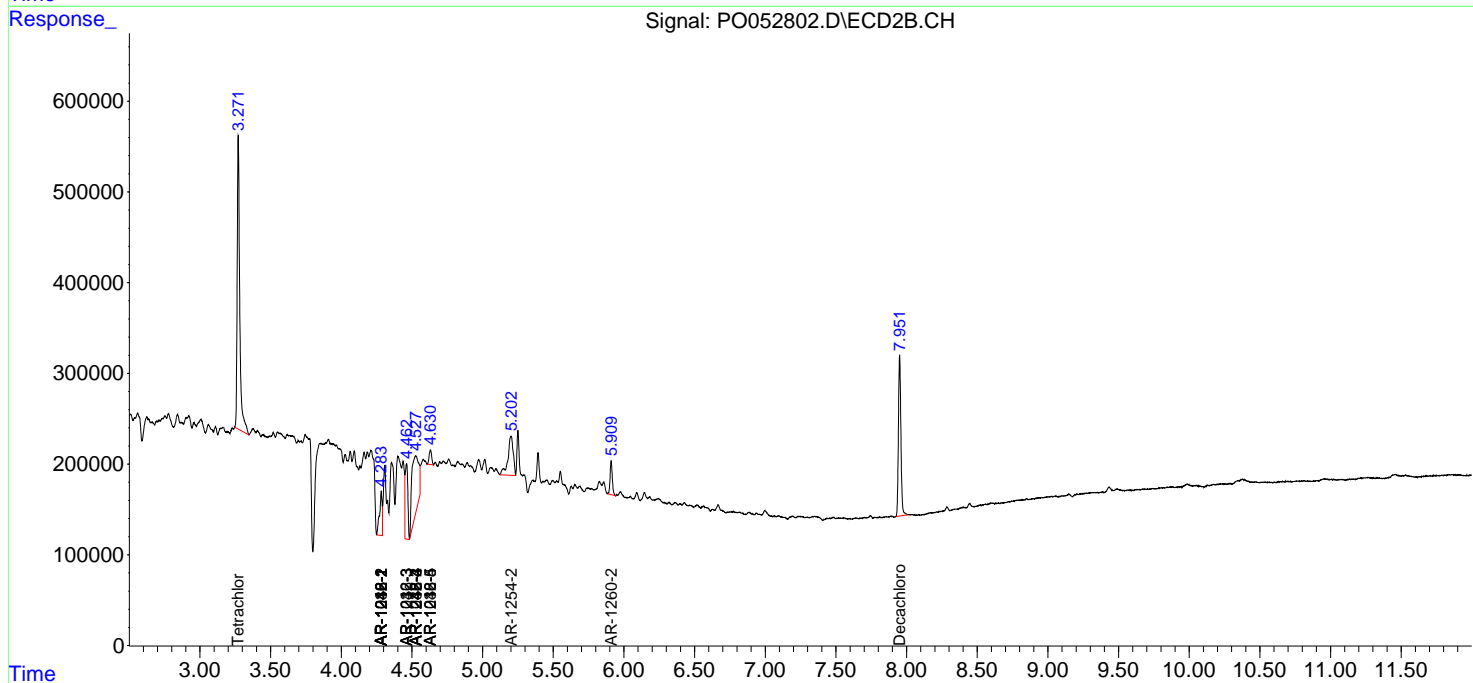
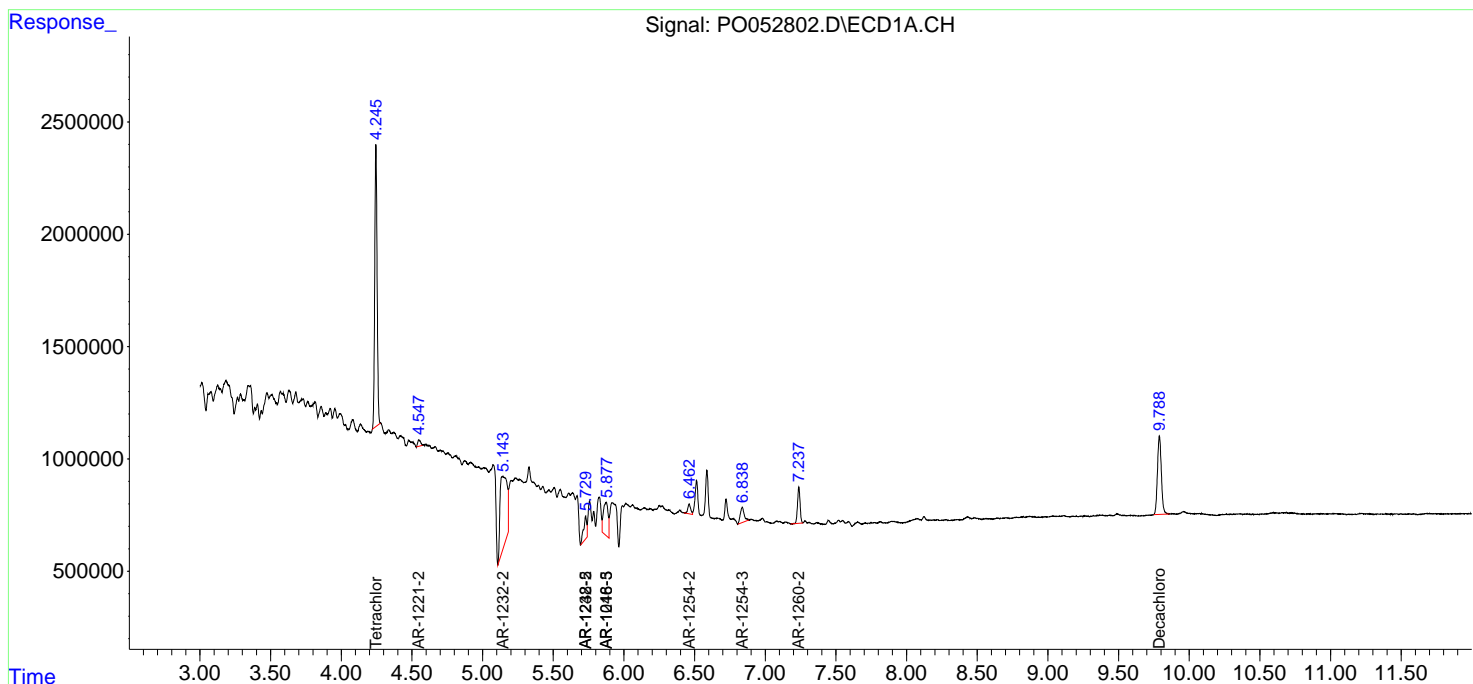
(f)=RT Delta > 1/2 Window (#)=Amounts differ by > 25% (m)=manual int.

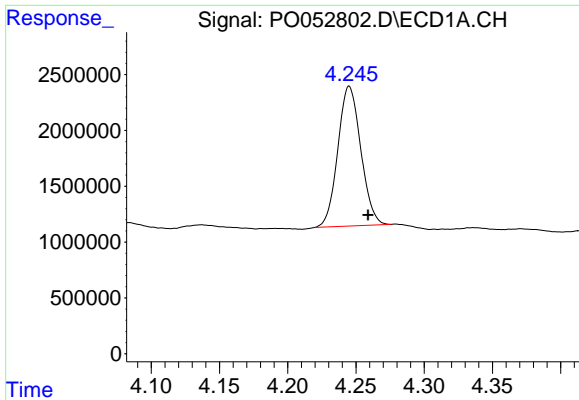
Data Path : Z:\pestpcbsrv\HPCHEM1\ECD_O\Data\PO122018\
 Data File : PO052802.D
 Signal(s) : Signal #1: ECD1A.CH Signal #2: ECD2B.CH
 Acq On : 20 Dec 2018 12:51
 Operator : SM/SJ
 Sample : J6196-11
 Misc :
 ALS Vial : 10 Sample Multiplier: 1

Instrument :
 ECD_O
 ClientSampled :

Integration File signal 1: autoint1.e
 Integration File signal 2: autoint2.e
 Quant Time: Dec 20 16:17:15 2018
 Quant Method : Z:\pestpcbsrv\HPCHEM1\ECD_O\methods\PO121518.M
 Quant Title : GC EXTRACTABLES
 QLast Update : Sun Dec 16 03:01:24 2018
 Response via : Initial Calibration
 Integrator: ChemStation 6890 Scale Mode: Small noise peaks clipped

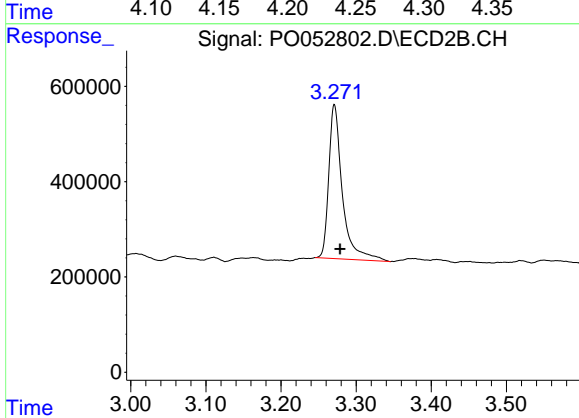
Volume Inj. : 2 µl
 Signal #1 Phase : ZB-MR1 Signal #2 Phase: ZB-MR2
 Signal #1 Info : 30Mx0.32mmx 0.50µ Signal #2 Info : 30M x 0.32mm x 0.25µm



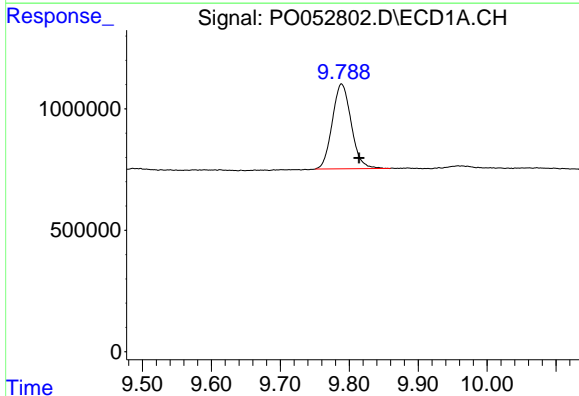


#1 Tetrachloro-m-xylene
 R.T.: 4.245 min
 Delta R.T.: -0.014 min
 Response: 14631149
 Conc: 18.66 ng/ml

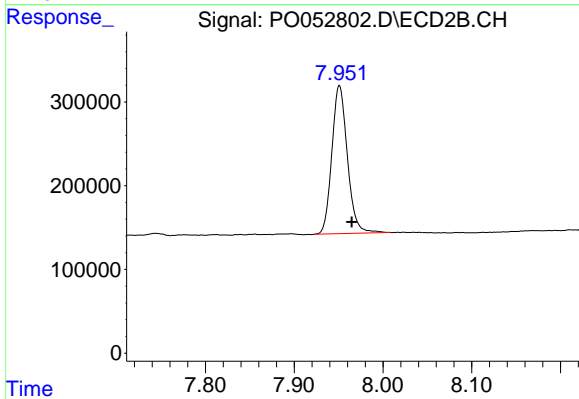
Instrument :
 ECD_O
 ClientSampled :



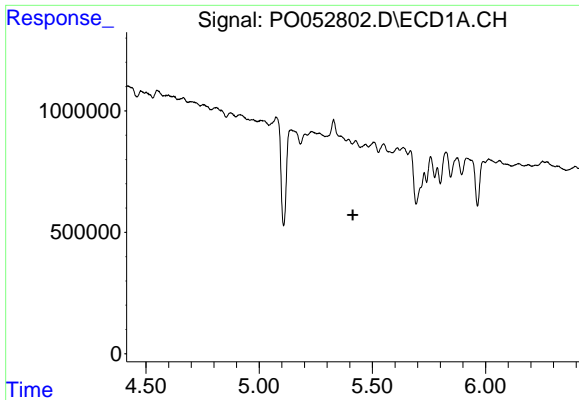
#1 Tetrachloro-m-xylene
 R.T.: 3.271 min
 Delta R.T.: -0.007 min
 Response: 4069503
 Conc: 19.20 ng/ml



#2 Decachlorobiphenyl
 R.T.: 9.789 min
 Delta R.T.: -0.025 min
 Response: 6670421
 Conc: 13.24 ng/ml



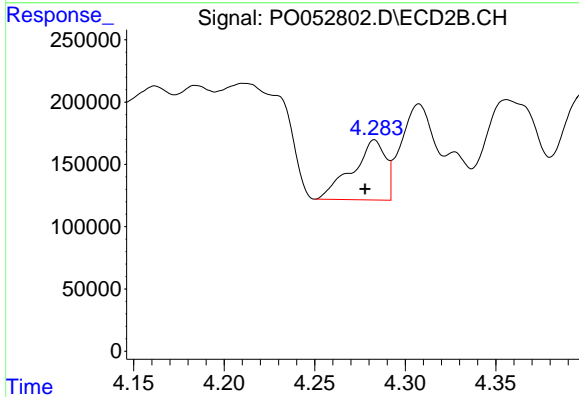
#2 Decachlorobiphenyl
 R.T.: 7.951 min
 Delta R.T.: -0.014 min
 Response: 2146637
 Conc: 9.73 ng/ml



#3 AR-1016-1

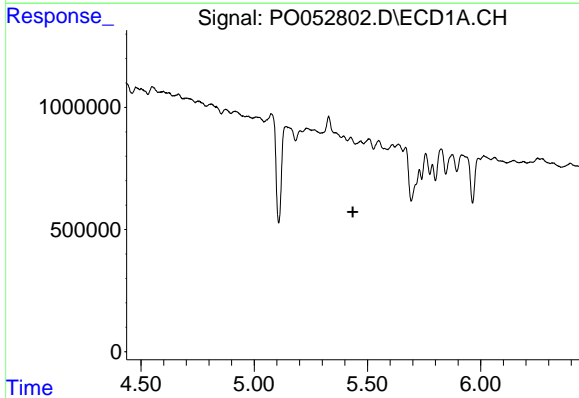
R.T.: 0.000 min
 Exp R.T.: 5.414 min
 Response: 0
 Conc: N.D.

Instrument :
 ECD_O
 ClientSampled :



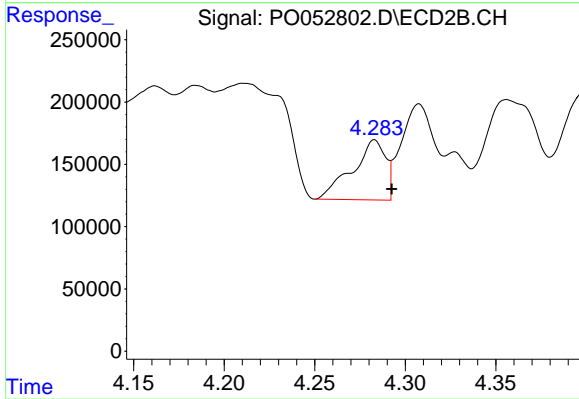
#3 AR-1016-1

R.T.: 4.283 min
 Delta R.T.: 0.005 min
 Response: 612109
 Conc: 95.75 ng/ml



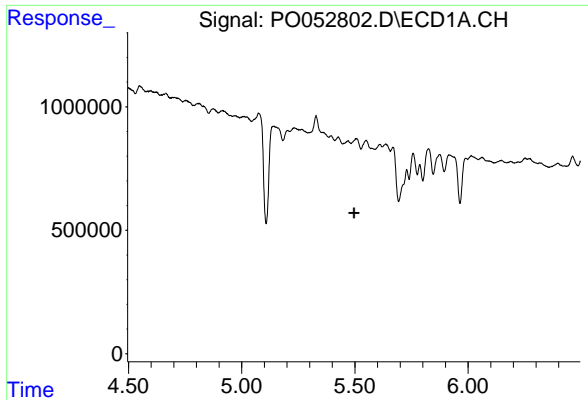
#4 AR-1016-2

R.T.: 0.000 min
 Exp R.T.: 5.436 min
 Response: 0
 Conc: N.D.



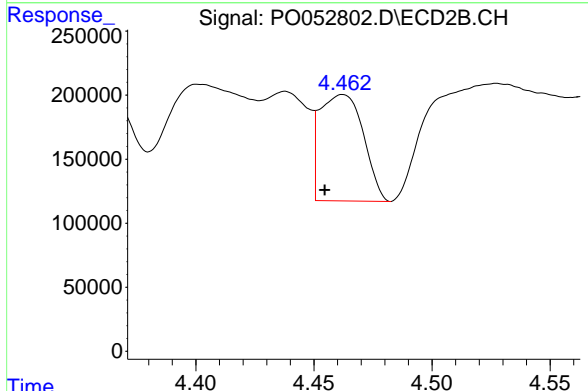
#4 AR-1016-2

R.T.: 4.283 min
 Delta R.T.: -0.009 min
 Response: 612109
 Conc: 49.91 ng/ml

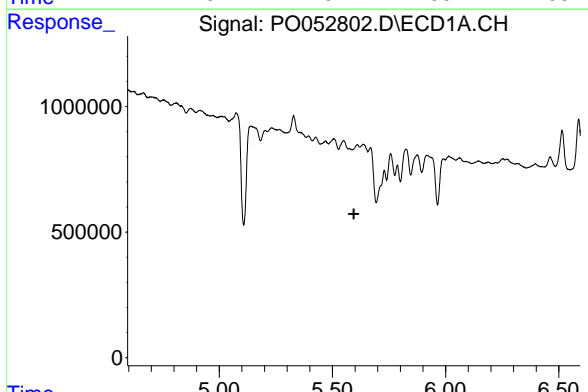


#5 AR-1016-3
 R.T.: 0.000 min
 Exp R.T. : 5.496 min
 Response: 0
 Conc: N.D.

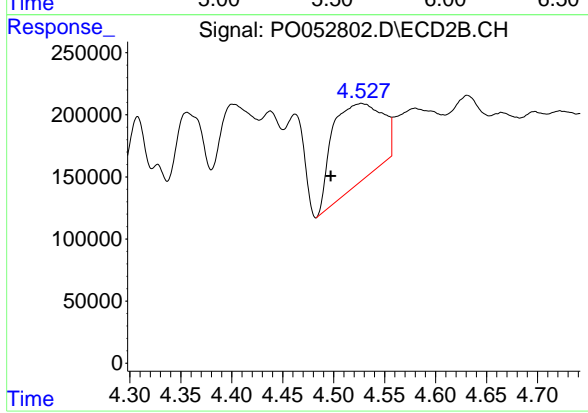
Instrument :
 ECD_O
 ClientSampled :



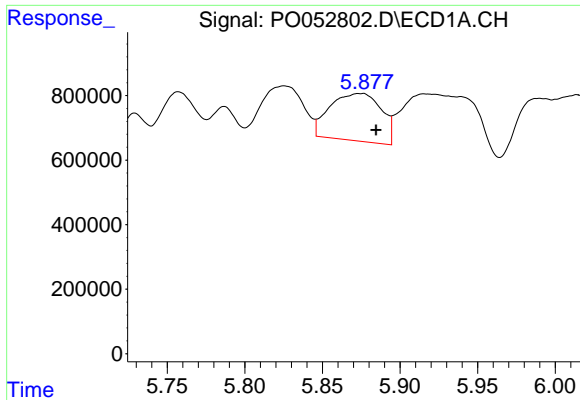
#5 AR-1016-3
 R.T.: 4.462 min
 Delta R.T.: 0.008 min
 Response: 1065421
 Conc: 192.83 ng/ml



#6 AR-1016-4
 R.T.: 0.000 min
 Exp R.T. : 5.595 min
 Response: 0
 Conc: N.D.



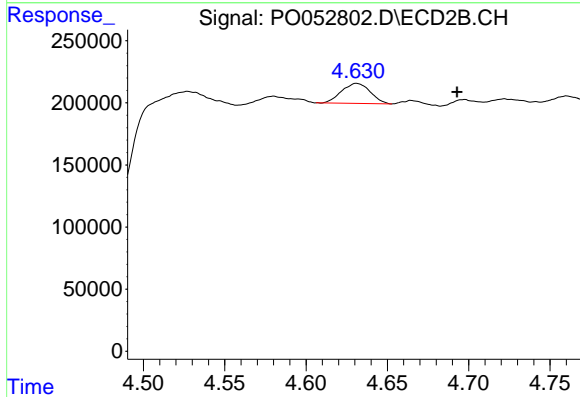
#6 AR-1016-4
 R.T.: 4.527 min
 Delta R.T.: 0.030 min
 Response: 2185144
 Conc: 451.97 ng/ml



#7 AR-1016-5

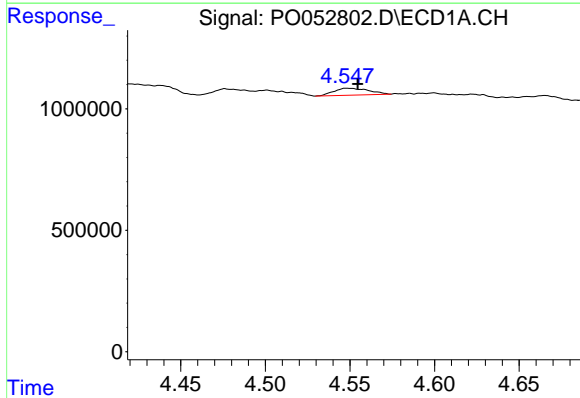
R.T.: 5.877 min
 Delta R.T.: -0.008 min
 Response: 3379809
 Conc: 226.15 ng/ml

Instrument :
 ECD_O
 ClientSampleId :



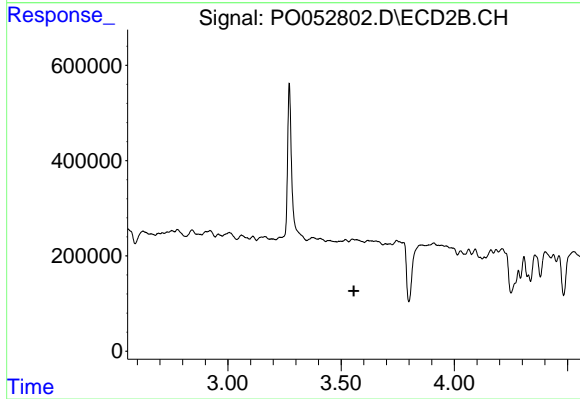
#7 AR-1016-5

R.T.: 4.631 min
 Delta R.T.: -0.062 min
 Response: 197991
 Conc: 30.76 ng/ml



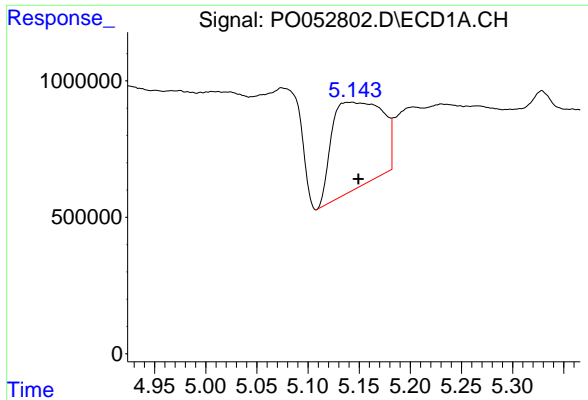
#9 AR-1221-2

R.T.: 4.548 min
 Delta R.T.: -0.007 min
 Response: 404922
 Conc: 74.19 ng/ml



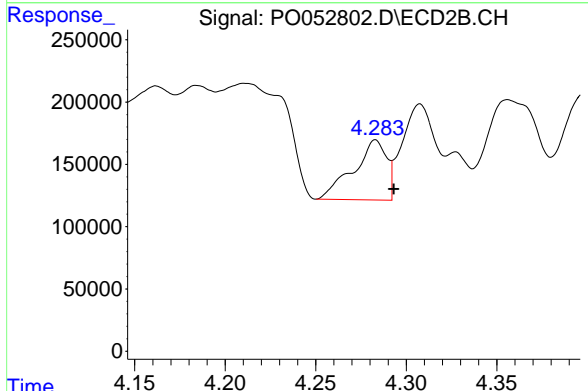
#9 AR-1221-2

R.T.: 0.000 min
 Exp R.T. : 3.556 min
 Response: 0
 Conc: N.D.

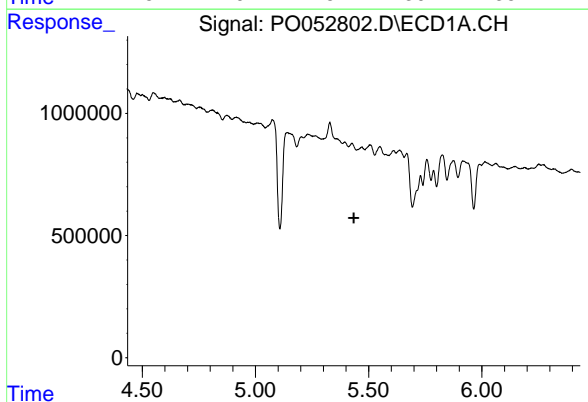


#12 AR-1232-2
 R.T.: 5.144 min
 Delta R.T.: -0.006 min
 Response: 10816503
 Conc: 1460.21 ng/ml

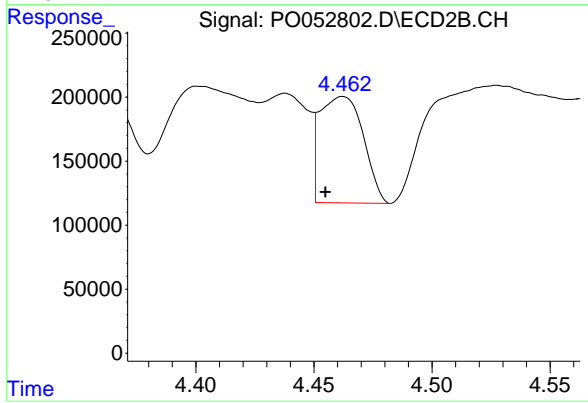
Instrument :
 ECD_O
 ClientSampleId :



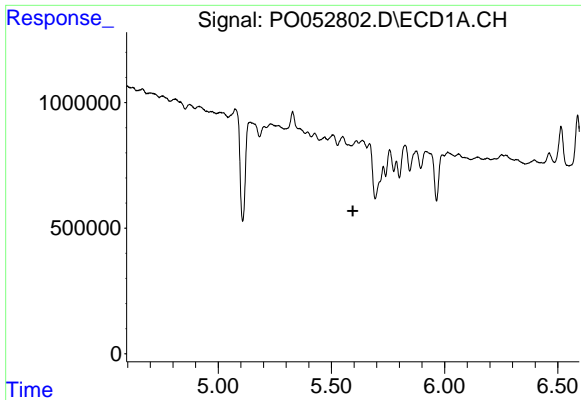
#12 AR-1232-2
 R.T.: 4.283 min
 Delta R.T.: -0.010 min
 Response: 612109
 Conc: 107.58 ng/ml



#13 AR-1232-3
 R.T.: 0.000 min
 Exp R.T. : 5.435 min
 Response: 0
 Conc: N.D.



#13 AR-1232-3
 R.T.: 4.462 min
 Delta R.T.: 0.007 min
 Response: 1065421
 Conc: 418.79 ng/ml

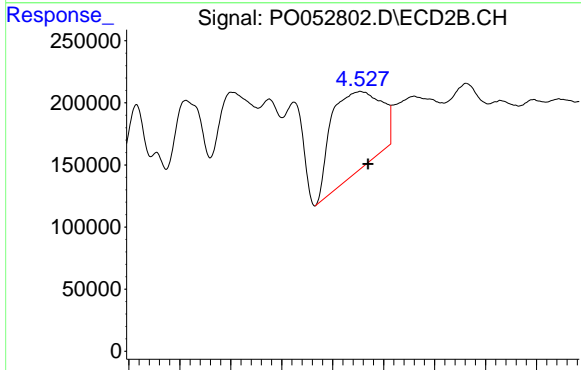


#14 AR-1232-4

R.T.: 0.000 min
 Exp R.T.: 5.595 min
 Response: 0
 Conc: N.D.

Instrument :
 ECD_O
 ClientSampled :

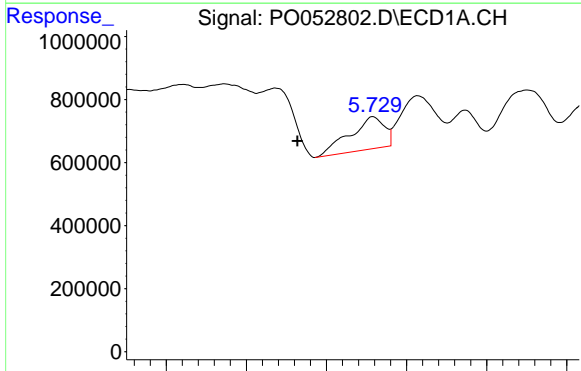
Time



#14 AR-1232-4

R.T.: 4.527 min
 Delta R.T.: -0.007 min
 Response: 2185144
 Conc: 950.09 ng/ml

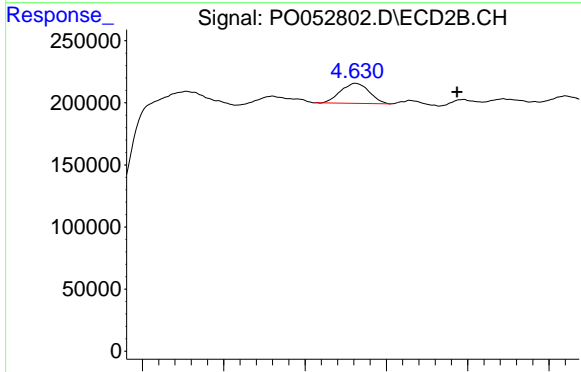
Time



#15 AR-1232-5

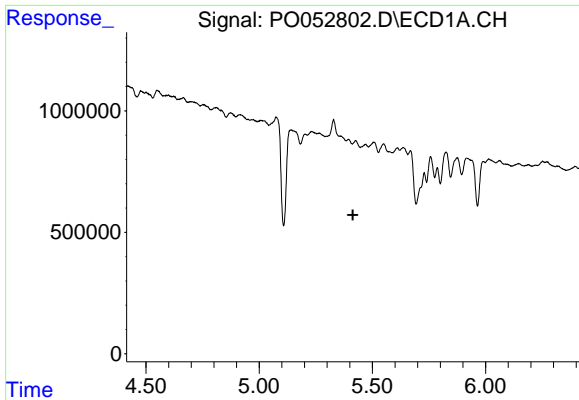
R.T.: 5.729 min
 Delta R.T.: 0.047 min
 Response: 1535568
 Conc: 332.85 ng/ml

Time



#15 AR-1232-5

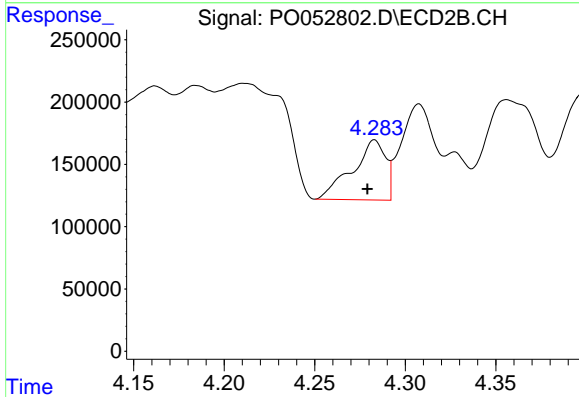
R.T.: 4.631 min
 Delta R.T.: -0.062 min
 Response: 197991
 Conc: 74.28 ng/ml



#16 AR-1242-1

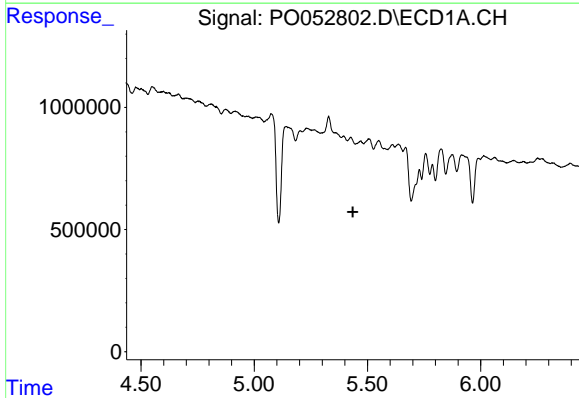
R.T.: 0.000 min
 Exp R.T.: 5.414 min
 Response: 0
 Conc: N.D.

Instrument :
 ECD_O
 ClientSampled :



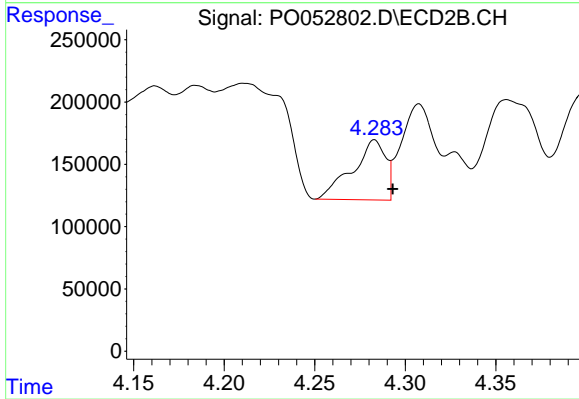
#16 AR-1242-1

R.T.: 4.283 min
 Delta R.T.: 0.004 min
 Response: 612109
 Conc: 112.22 ng/ml



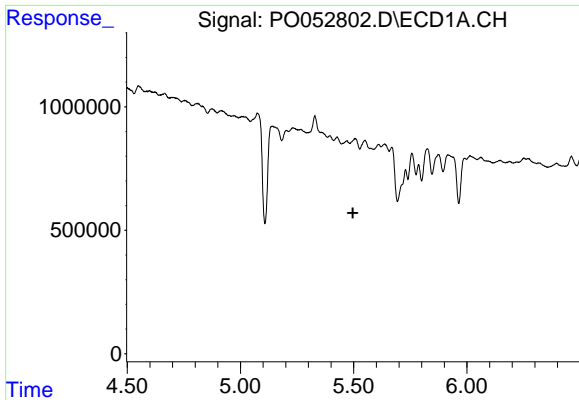
#17 AR-1242-2

R.T.: 0.000 min
 Exp R.T.: 5.435 min
 Response: 0
 Conc: N.D.



#17 AR-1242-2

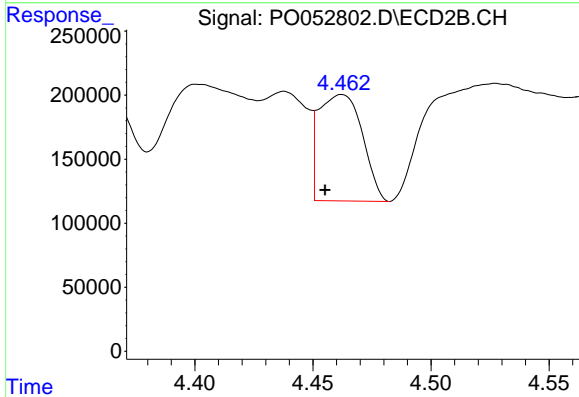
R.T.: 4.283 min
 Delta R.T.: -0.010 min
 Response: 612109
 Conc: 57.68 ng/ml



#18 AR-1242-3

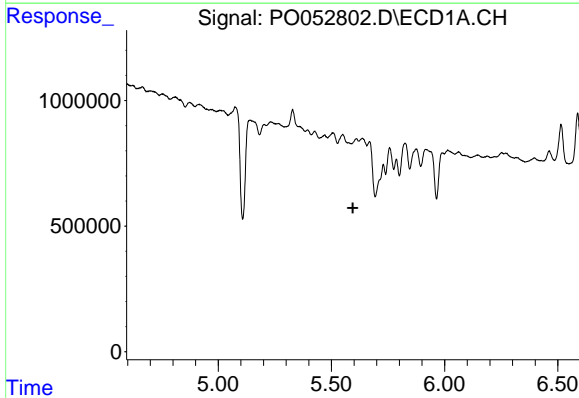
R.T.: 0.000 min
 Exp R.T.: 5.497 min
 Response: 0
 Conc: N.D.

Instrument :
 ECD_O
 ClientSampled :



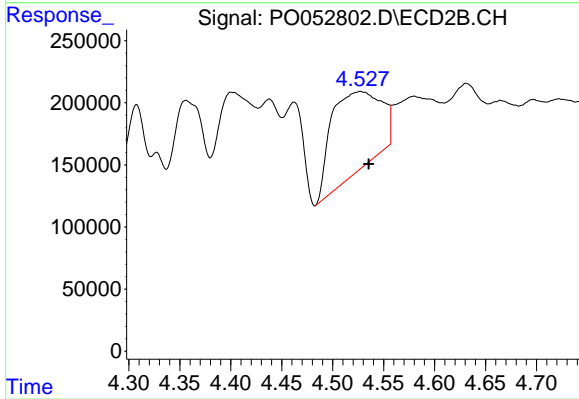
#18 AR-1242-3

R.T.: 4.462 min
 Delta R.T.: 0.007 min
 Response: 1065421
 Conc: 221.30 ng/ml



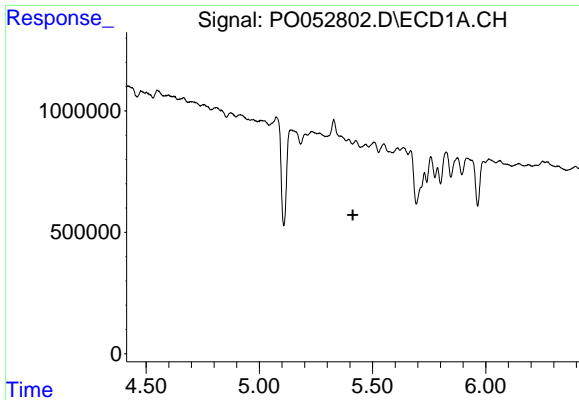
#19 AR-1242-4

R.T.: 0.000 min
 Exp R.T.: 5.595 min
 Response: 0
 Conc: N.D.



#19 AR-1242-4

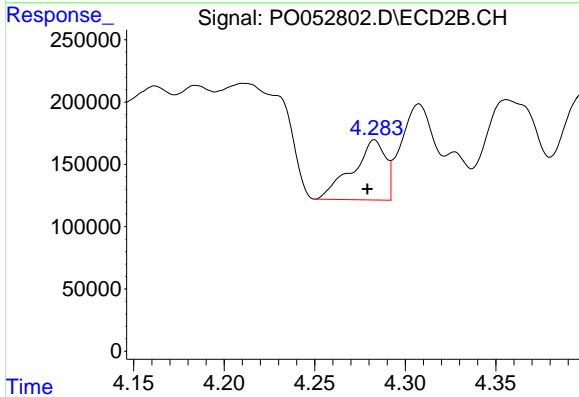
R.T.: 4.527 min
 Delta R.T.: -0.008 min
 Response: 2185144
 Conc: 446.28 ng/ml



#21 AR-1248-1

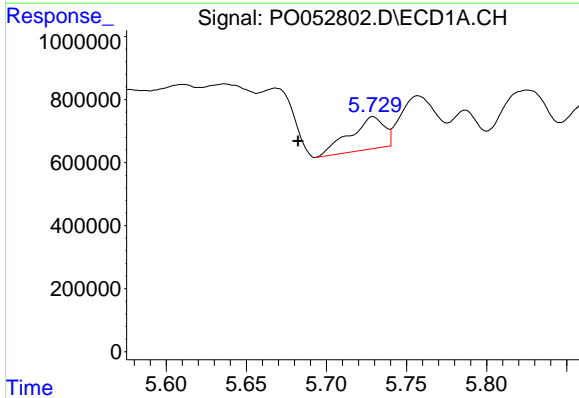
R.T.: 0.000 min
 Exp R.T.: 5.413 min
 Response: 0
 Conc: N.D.

Instrument :
 ECD_O
 ClientSampleId :



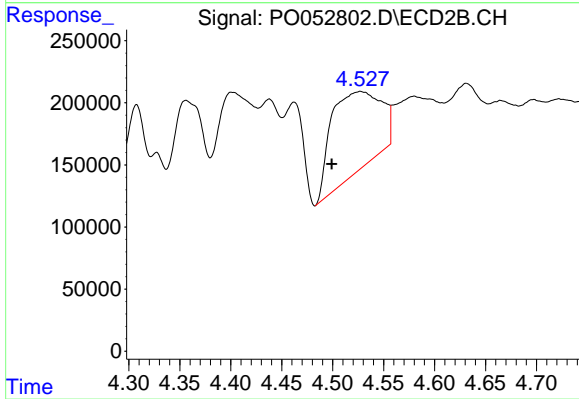
#21 AR-1248-1

R.T.: 4.283 min
 Delta R.T.: 0.004 min
 Response: 612109
 Conc: 138.10 ng/ml



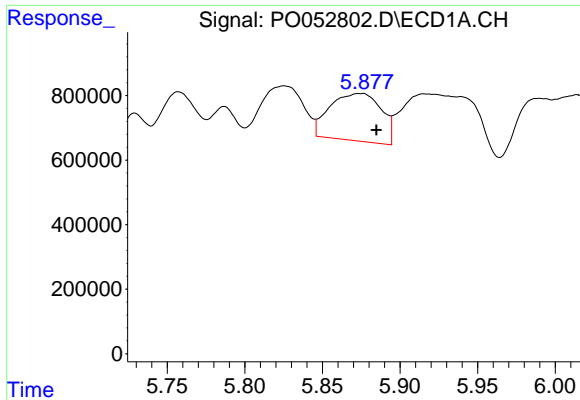
#22 AR-1248-2

R.T.: 5.729 min
 Delta R.T.: 0.047 min
 Response: 1535568
 Conc: 80.60 ng/ml



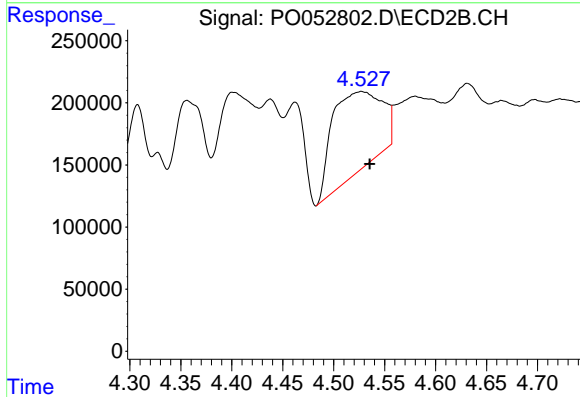
#22 AR-1248-2

R.T.: 4.527 min
 Delta R.T.: 0.028 min
 Response: 2185144
 Conc: 315.21 ng/ml

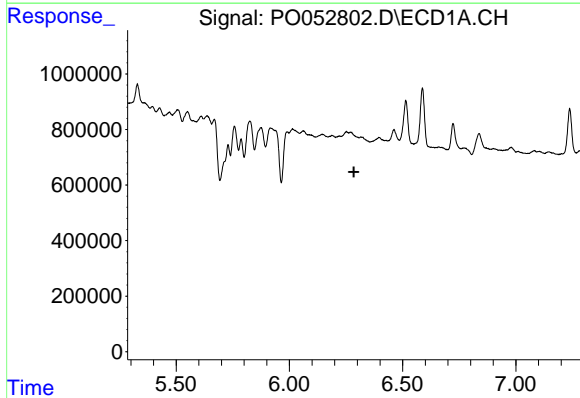


#23 AR-1248-3
 R.T.: 5.877 min
 Delta R.T.: -0.008 min
 Response: 3379809
 Conc: 156.40 ng/ml

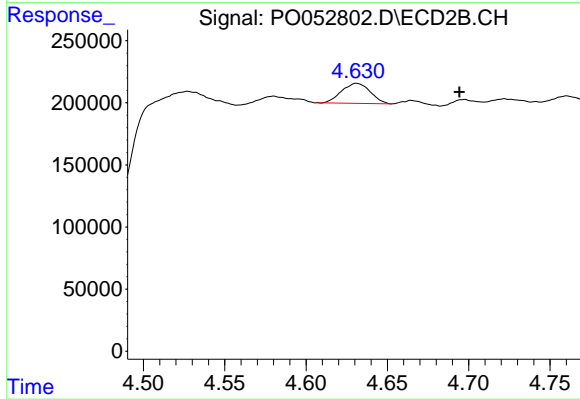
Instrument :
 ECD_O
 ClientSampled :



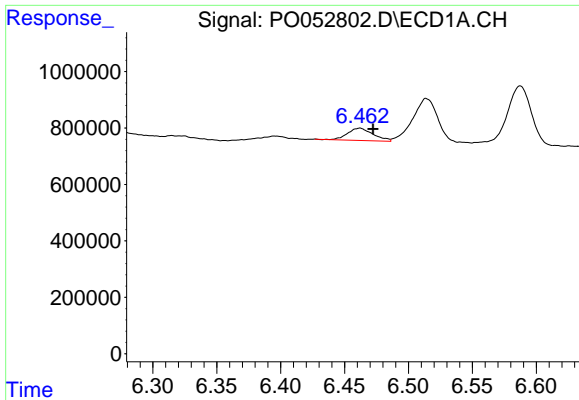
#23 AR-1248-3
 R.T.: 4.527 min
 Delta R.T.: -0.008 min
 Response: 2185144
 Conc: 314.63 ng/ml



#24 AR-1248-4
 R.T.: 0.000 min
 Exp R.T. : 6.284 min
 Response: 0
 Conc: N.D.



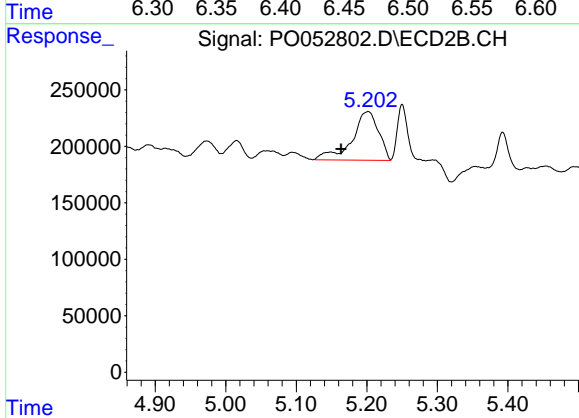
#24 AR-1248-4
 R.T.: 4.631 min
 Delta R.T.: -0.063 min
 Response: 197991
 Conc: 23.13 ng/ml



#27 AR-1254-2

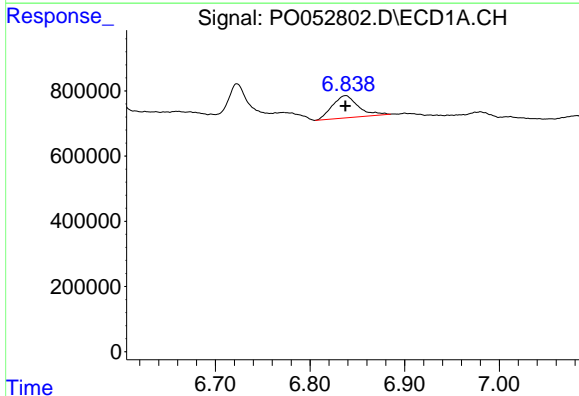
R.T.: 6.462 min
 Delta R.T.: -0.010 min
 Response: 616787
 Conc: 15.93 ng/ml

Instrument :
 ECD_O
 ClientSampleId :



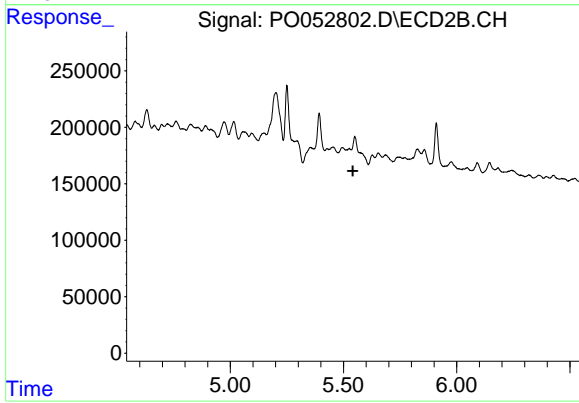
#27 AR-1254-2

R.T.: 5.202 min
 Delta R.T.: 0.038 min
 Response: 1127054
 Conc: 91.93 ng/ml



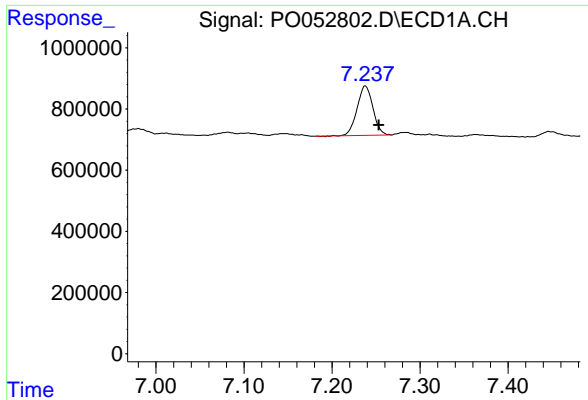
#28 AR-1254-3

R.T.: 6.838 min
 Delta R.T.: 0.000 min
 Response: 1290361
 Conc: 32.75 ng/ml



#28 AR-1254-3

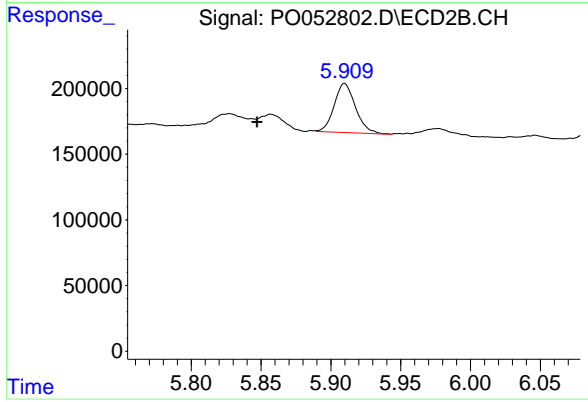
R.T.: 0.000 min
 Exp R.T. : 5.541 min
 Response: 0
 Conc: N.D.



#32 AR-1260-2

R.T.: 7.238 min
Delta R.T.: -0.015 min
Response: 2021071
Conc: 57.78 ng/ml

Instrument :
ECD_O
ClientSampleId :



#32 AR-1260-2

R.T.: 5.910 min
Delta R.T.: 0.063 min
Response: 396598
Conc: 23.87 ng/ml