

Data Path : Z:\pestpcbsrv\HPCHEM1\ECD\_0\Data\PO122023\  
 Data File : PO100613.D  
 Signal(s) : Signal #1: ECD1A.ch Signal #2: ECD2B.ch  
 Acq On : 21 Dec 2023 03:43  
 Operator : YP/AJ  
 Sample : AR1242ICV500  
 Misc :  
 ALS Vial : 32 Sample Multiplier: 1

Instrument :  
 ECD\_0  
 ClientSampleId :

Integration File signal 1: autoint1.e  
 Integration File signal 2: autoint2.e  
 Quant Time: Dec 21 04:22:42 2023  
 Quant Method : Z:\pestpcbsrv\HPCHEM1\ECD\_0\methods\PO122023.M  
 Quant Title : GC EXTRACTABLES  
 QLast Update : Thu Dec 21 04:22:11 2023  
 Response via : Initial Calibration  
 Integrator: ChemStation

Volume Inj. : 2 µl  
 Signal #1 Phase : ZB-MR1 Signal #2 Phase: ZB-MR2  
 Signal #1 Info : 30Mx0.32mmx 0.50µ Signal #2 Info : 30M x 0.32mm x 0.25µm

Compound	RT#1	RT#2	Resp#1	Resp#2	ng/ml	ng/ml
System Monitoring Compounds						
1) SA Tetrachlo...	4.350	3.646	173.3E6	112.6E6	54.685	53.899
2) SA Decachlor...	10.092	8.705	108.1E6	79330891	51.624	51.342
Target Compounds						
8) L2 AR-1221-1	4.555	3.860	5095303	3502885	137.833	139.492
9) L2 AR-1221-2	4.646	3.948	7543197	5125746	271.618	266.933
10) L2 AR-1221-3	4.721	4.024	24928135	17441940	298.676	296.389
11) L3 AR-1232-1	4.721	4.024	24928135	17441940	373.910	368.885
12) L3 AR-1232-2	5.250	4.761	33921958	37770488	967.571	905.551
13) L3 AR-1232-3	5.540	4.940	55920050	20367886	937.220	949.392
14) L3 AR-1232-4	5.701	5.023	27976911	22272887	1020.329	1048.289
15) L3 AR-1232-5	5.793	5.197	24626906	22972263	1024.287	1051.191
16) L4 AR-1242-1	5.518	4.742	37651468	27026735	533.832	517.474
17) L4 AR-1242-2	5.540	4.761	55920050	37770488	532.762	521.159
18) L4 AR-1242-3	5.602	4.940	36339227	20367886	559.026	531.570
19) L4 AR-1242-4	5.701	5.023	27976911	22272887	558.676	534.358
20) L4 AR-1242-5	6.439	5.552	26354704	24235405	509.203	528.066
21) L5 AR-1248-1	5.518	4.742	37651468	27026735	686.316	675.861
22) L5 AR-1248-2	5.793	4.981	24626906	17860102	285.141	296.864
23) L5 AR-1248-3	5.997	5.023	28416644	22272887	323.750	356.313
24) L5 AR-1248-4	6.401	5.197	24912275	22972263	277.090	318.923
25) L5 AR-1248-5	6.439	5.593	26354704	19598305	293.611	317.680
26) L6 AR-1254-1	6.373	5.552	19000269	24235405	180.751	236.144 #
27) L6 AR-1254-2	6.597	5.700	21096582	6925610	142.871	75.384 #
28) L6 AR-1254-3	6.961	6.108	8290185	7813565	59.204	57.776
29) L6 AR-1254-4	7.247	6.338	4825373	5449493	56.761	75.550 #
30) L6 AR-1254-5	7.668	6.758	5413166	2007655	45.748	17.424 #
36) L8 AR-1262-1	7.668	6.758	5413166	2007655	54.186	32.185 #
37) L8 AR-1262-2	8.323f	7.059	3761124	99203	15.849	0.878 #
38) L8 AR-1262-3	8.603	7.562	270761	9228	1.667	0.120 #
39) L8 AR-1262-4	8.685	7.652	239841	187570	1.860	1.270 #
40) L8 AR-1262-5	9.341	8.144	39670	378341	0.497	5.916 #
41) L9 AR-1268-1	8.603	7.562	270761	9228	0.958	0.042 #
42) L9 AR-1268-2	8.685	7.652	239841	187570	0.949	0.927
43) L9 AR-1268-3	8.918	7.859	200815	923633	0.880	4.896 #
44) L9 AR-1268-4	9.341	8.144	39670	378341	0.507	5.635 #
45) L9 AR-1268-5	9.759	8.444	583282	794871	0.813	1.532 #

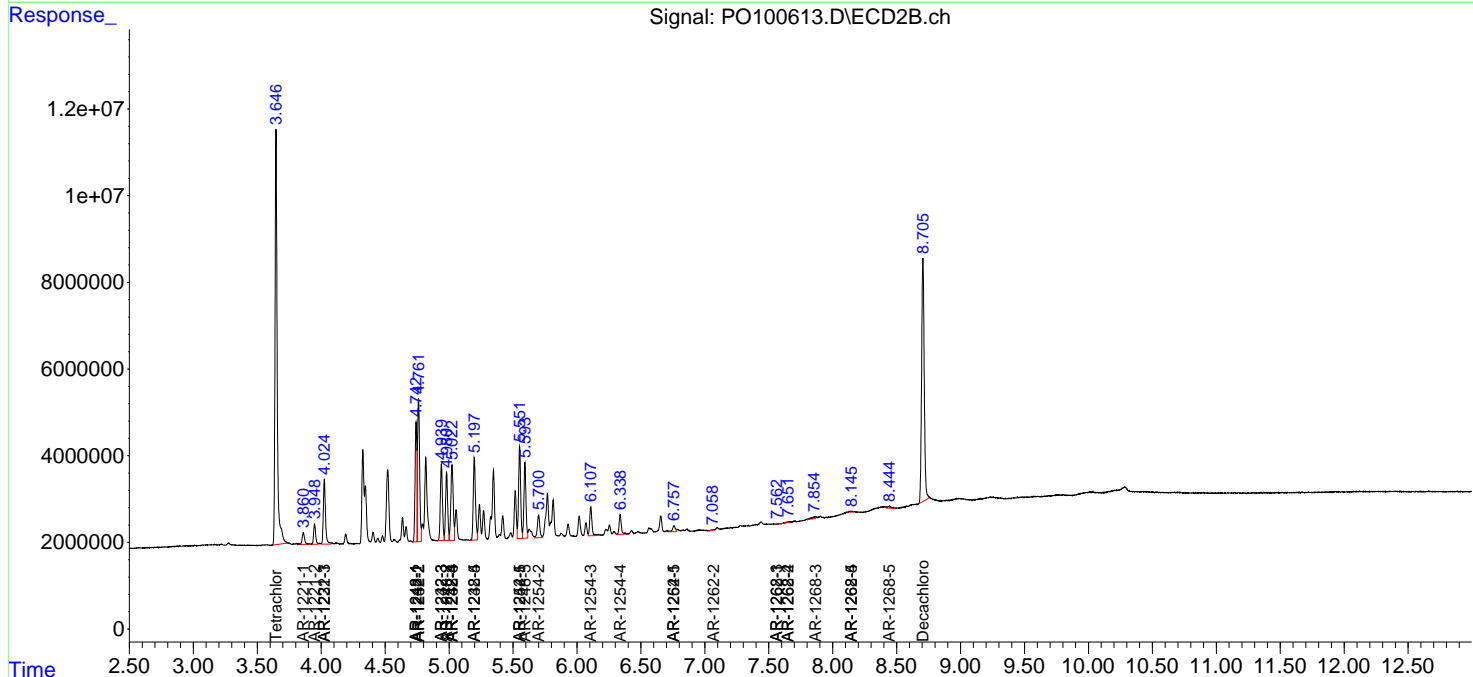
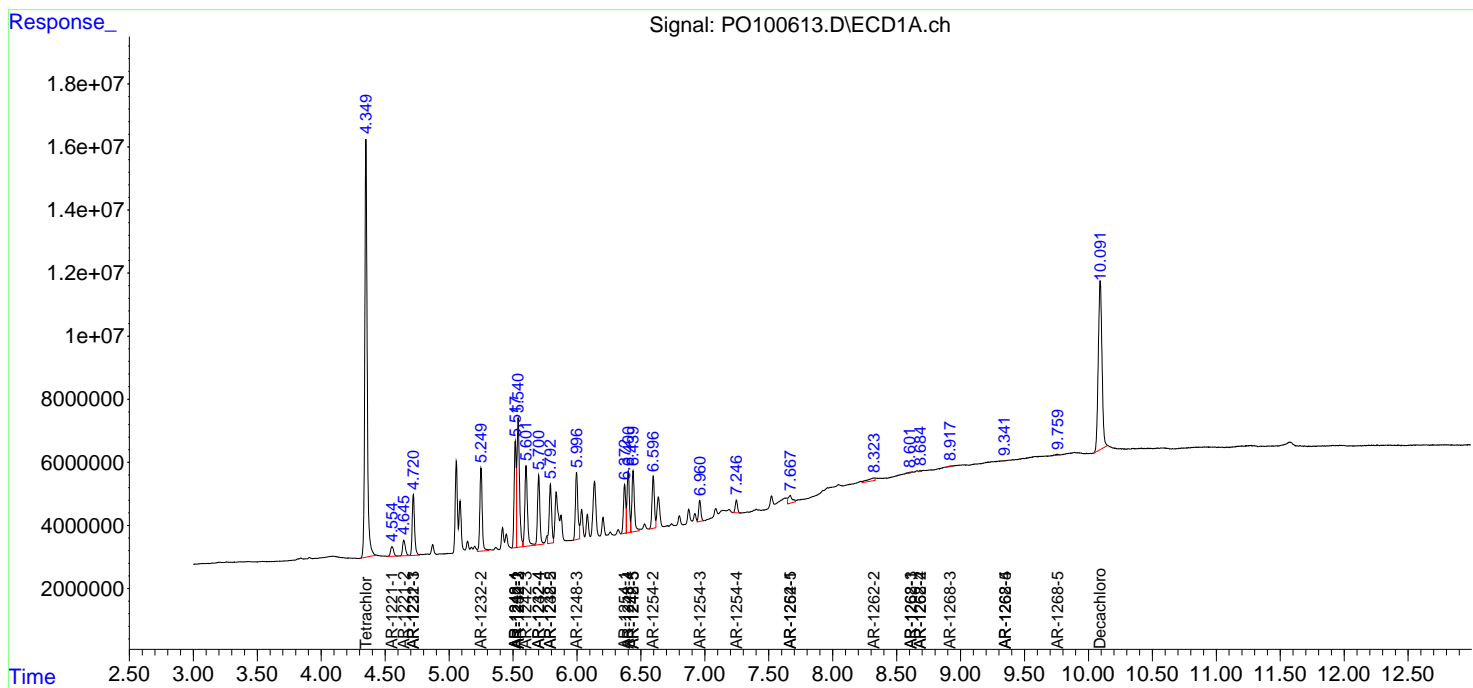
(f)=RT Delta > 1/2 Window (#)=Amounts differ by > 25% (m)=manual int.

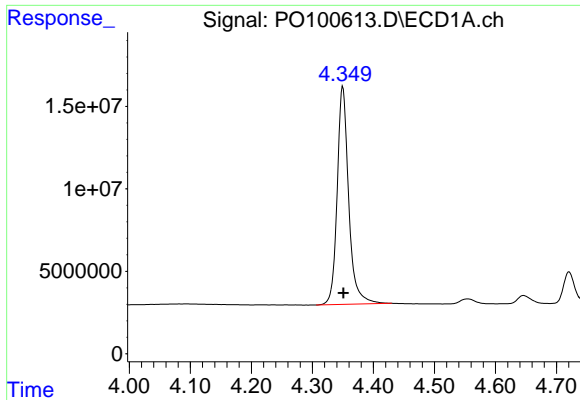
Data Path : Z:\pestpcbsrv\HPCHEM1\ECD\_O\Data\PO122023\  
 Data File : PO100613.D  
 Signal(s) : Signal #1: ECD1A.ch Signal #2: ECD2B.ch  
 Acq On : 21 Dec 2023 03:43  
 Operator : YP/AJ  
 Sample : AR1242ICV500  
 Misc :  
 ALS Vial : 32 Sample Multiplier: 1

Instrument :  
 ECD\_O  
 ClientSampleId :

Integration File signal 1: autoint1.e  
 Integration File signal 2: autoint2.e  
 Quant Time: Dec 21 04:22:42 2023  
 Quant Method : Z:\pestpcbsrv\HPCHEM1\ECD\_O\methods\PO122023.M  
 Quant Title : GC EXTRACTABLES  
 QLast Update : Thu Dec 21 04:22:11 2023  
 Response via : Initial Calibration  
 Integrator: ChemStation

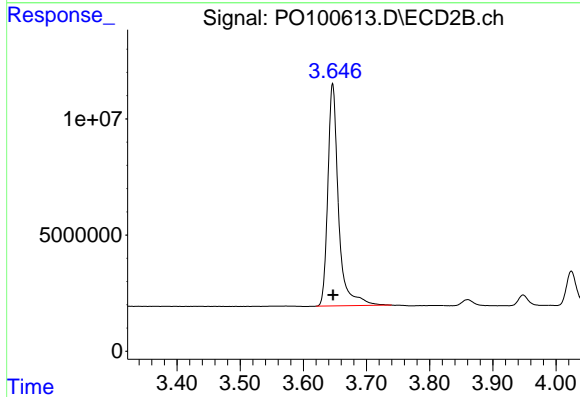
Volume Inj. : 2 µl  
 Signal #1 Phase : ZB-MR1 Signal #2 Phase: ZB-MR2  
 Signal #1 Info : 30Mx0.32mmx 0.50µ Signal #2 Info : 30M x 0.32mm x 0.25µm



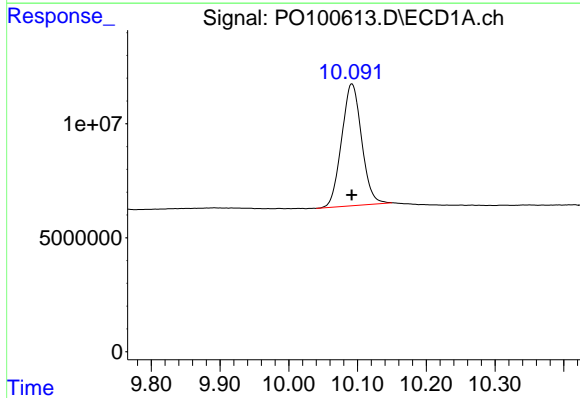


#1 Tetrachloro-m-xylene  
 R.T.: 4.350 min  
 Delta R.T.: -0.001 min  
 Response: 173322345  
 Conc: 54.68 ng/ml

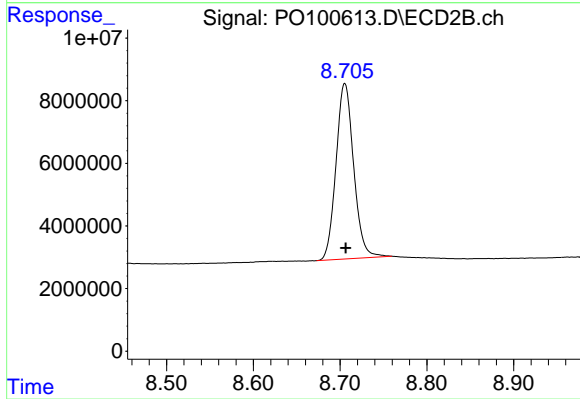
Instrument :  
 ECD\_O  
 ClientSampleId :



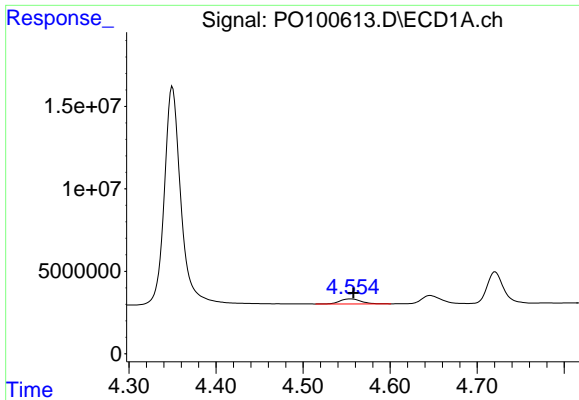
#1 Tetrachloro-m-xylene  
 R.T.: 3.646 min  
 Delta R.T.: 0.000 min  
 Response: 112640544  
 Conc: 53.90 ng/ml



#2 Decachlorobiphenyl  
 R.T.: 10.092 min  
 Delta R.T.: 0.000 min  
 Response: 108075623  
 Conc: 51.62 ng/ml



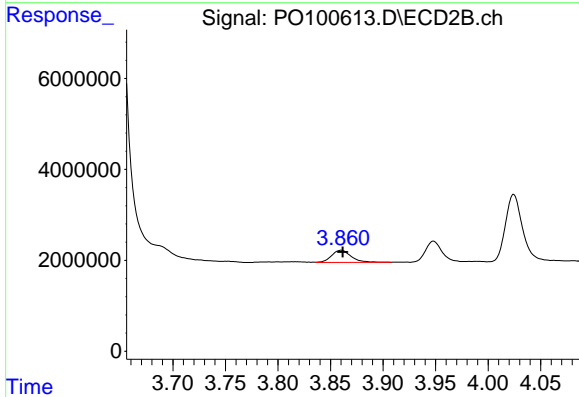
#2 Decachlorobiphenyl  
 R.T.: 8.705 min  
 Delta R.T.: -0.001 min  
 Response: 79330891  
 Conc: 51.34 ng/ml



#8 AR-1221-1

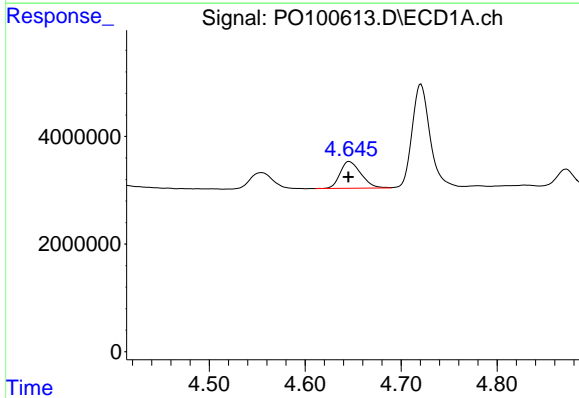
R.T.: 4.555 min  
 Delta R.T.: -0.003 min  
 Response: 5095303  
 Conc: 137.83 ng/ml

Instrument :  
 ECD\_O  
 ClientSampleId :



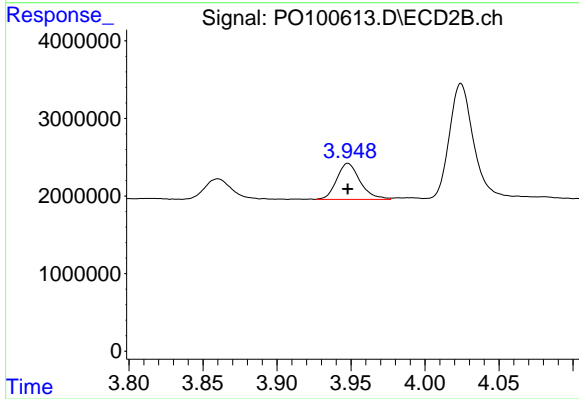
#8 AR-1221-1

R.T.: 3.860 min  
 Delta R.T.: -0.002 min  
 Response: 3502885  
 Conc: 139.49 ng/ml



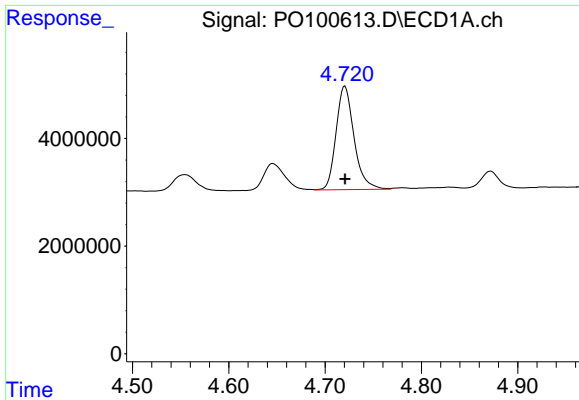
#9 AR-1221-2

R.T.: 4.646 min  
 Delta R.T.: 0.000 min  
 Response: 7543197  
 Conc: 271.62 ng/ml



#9 AR-1221-2

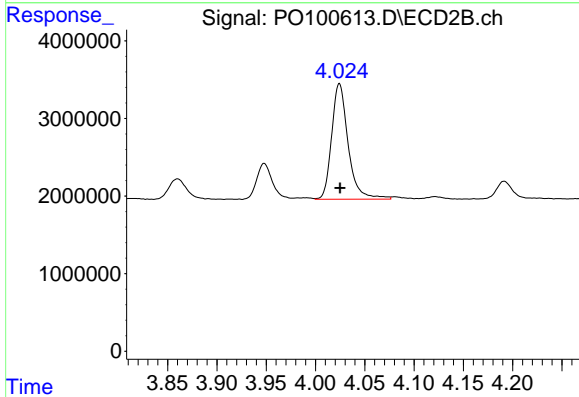
R.T.: 3.948 min  
 Delta R.T.: 0.000 min  
 Response: 5125746  
 Conc: 266.93 ng/ml



#10 AR-1221-3

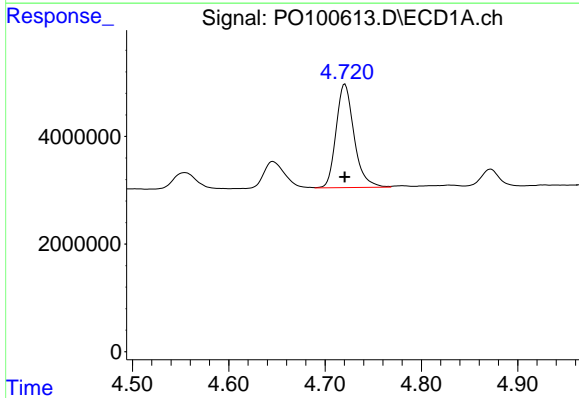
R.T.: 4.721 min  
 Delta R.T.: 0.000 min  
 Response: 24928135  
 Conc: 298.68 ng/ml

Instrument :  
 ECD\_O  
 ClientSampleId :



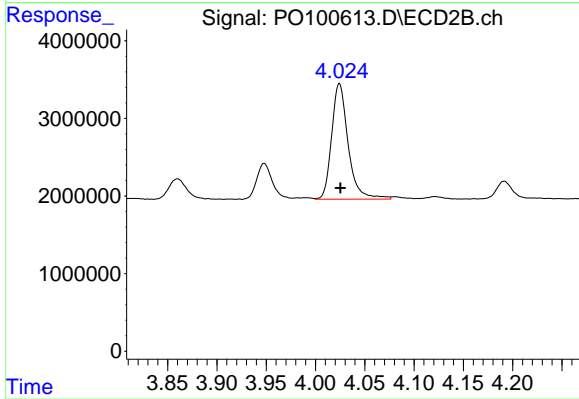
#10 AR-1221-3

R.T.: 4.024 min  
 Delta R.T.: 0.000 min  
 Response: 17441940  
 Conc: 296.39 ng/ml



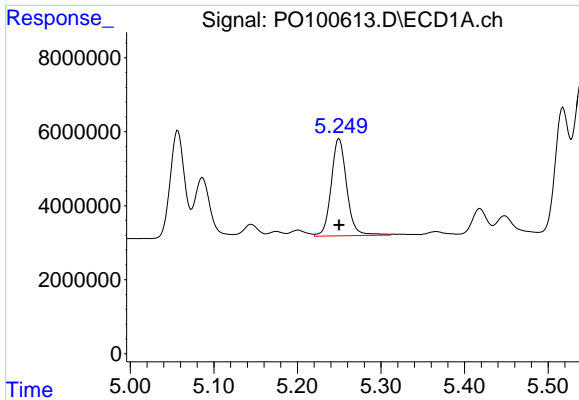
#11 AR-1232-1

R.T.: 4.721 min  
 Delta R.T.: 0.000 min  
 Response: 24928135  
 Conc: 373.91 ng/ml



#11 AR-1232-1

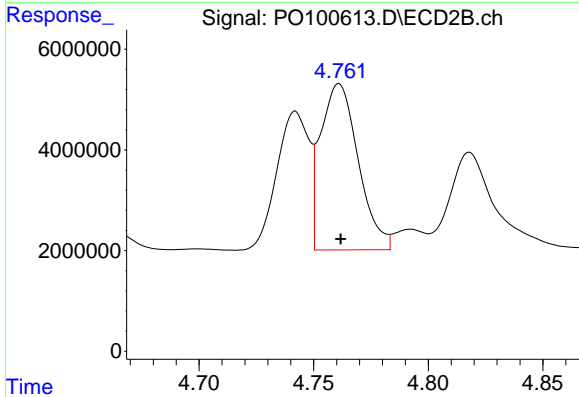
R.T.: 4.024 min  
 Delta R.T.: -0.001 min  
 Response: 17441940  
 Conc: 368.88 ng/ml



#12 AR-1232-2

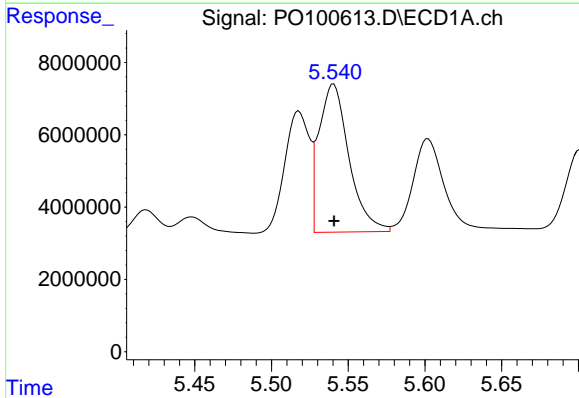
R.T.: 5.250 min  
 Delta R.T.: 0.000 min  
 Response: 33921958  
 Conc: 967.57 ng/ml

Instrument :  
 ECD\_O  
 ClientSampleId :



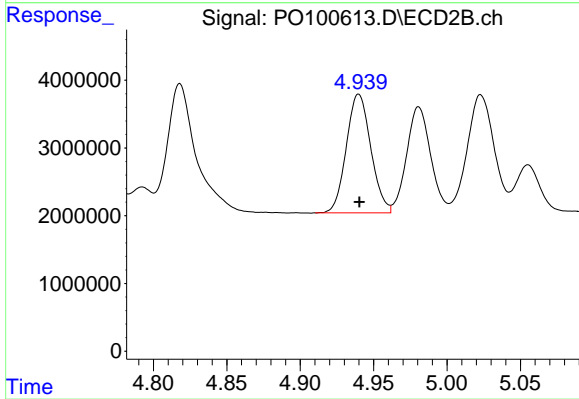
#12 AR-1232-2

R.T.: 4.761 min  
 Delta R.T.: 0.000 min  
 Response: 37770488  
 Conc: 905.55 ng/ml



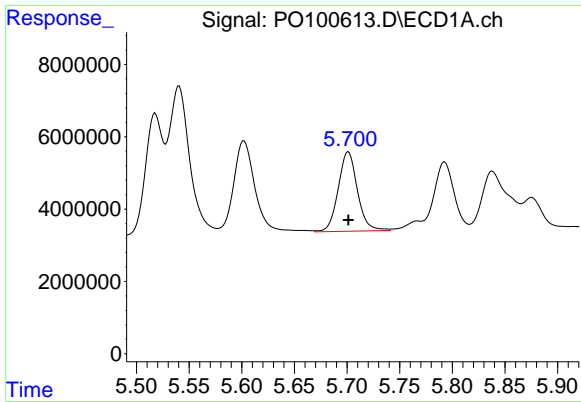
#13 AR-1232-3

R.T.: 5.540 min  
 Delta R.T.: 0.000 min  
 Response: 55920050  
 Conc: 937.22 ng/ml



#13 AR-1232-3

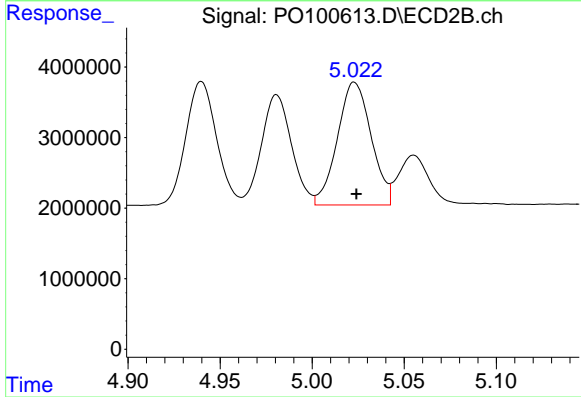
R.T.: 4.940 min  
 Delta R.T.: 0.000 min  
 Response: 20367886  
 Conc: 949.39 ng/ml



#14 AR-1232-4

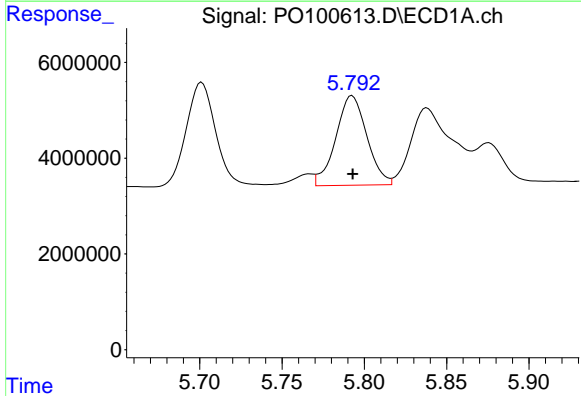
R.T.: 5.701 min  
 Delta R.T.: 0.000 min  
 Response: 27976911  
 Conc: 1020.33 ng/ml

Instrument :  
 ECD\_O  
 ClientSampleId :



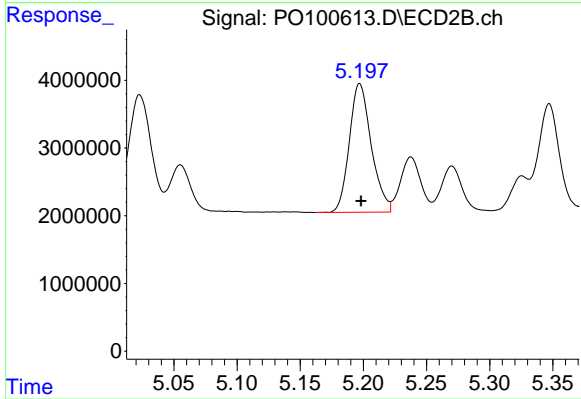
#14 AR-1232-4

R.T.: 5.023 min  
 Delta R.T.: -0.001 min  
 Response: 22272887  
 Conc: 1048.29 ng/ml



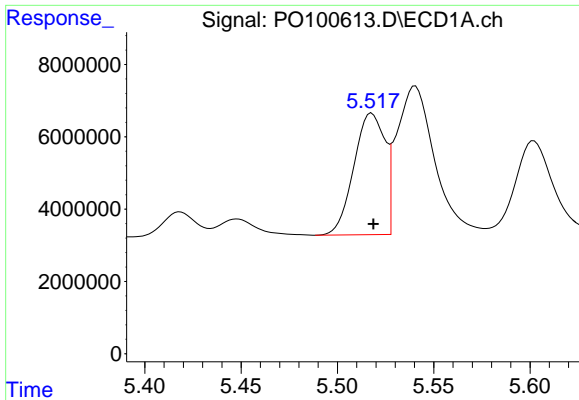
#15 AR-1232-5

R.T.: 5.793 min  
 Delta R.T.: 0.000 min  
 Response: 24626906  
 Conc: 1024.29 ng/ml



#15 AR-1232-5

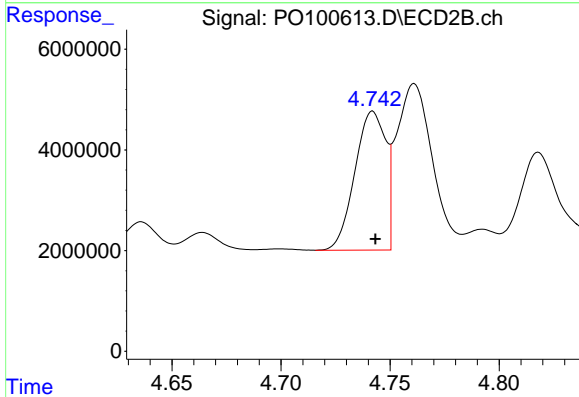
R.T.: 5.197 min  
 Delta R.T.: -0.001 min  
 Response: 22972263  
 Conc: 1051.19 ng/ml



#16 AR-1242-1

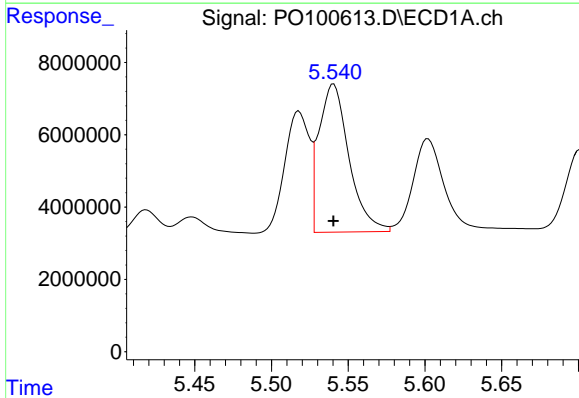
R.T.: 5.518 min  
 Delta R.T.: 0.000 min  
 Response: 37651468  
 Conc: 533.83 ng/ml

Instrument :  
 ECD\_O  
 ClientSampleId :



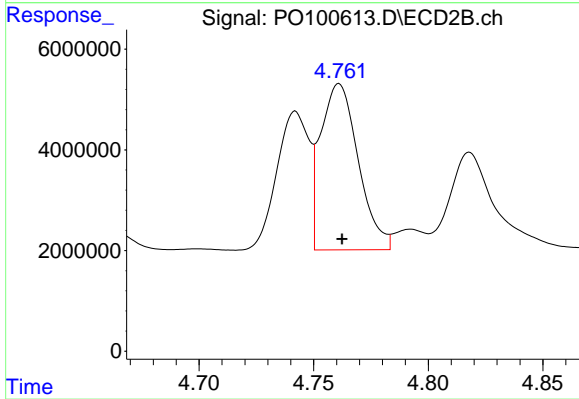
#16 AR-1242-1

R.T.: 4.742 min  
 Delta R.T.: -0.001 min  
 Response: 27026735  
 Conc: 517.47 ng/ml



#17 AR-1242-2

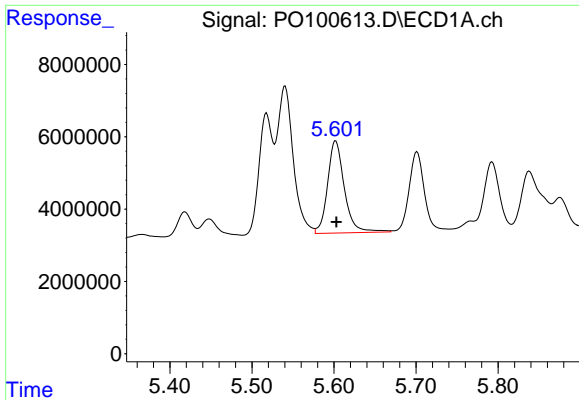
R.T.: 5.540 min  
 Delta R.T.: 0.000 min  
 Response: 55920050  
 Conc: 532.76 ng/ml



#17 AR-1242-2

R.T.: 4.761 min  
 Delta R.T.: -0.001 min  
 Response: 37770488  
 Conc: 521.16 ng/ml

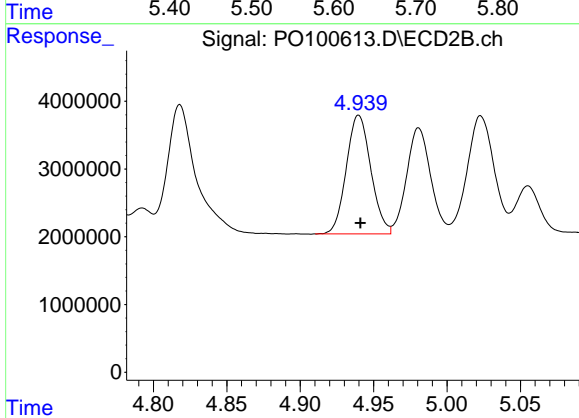




#18 AR-1242-3

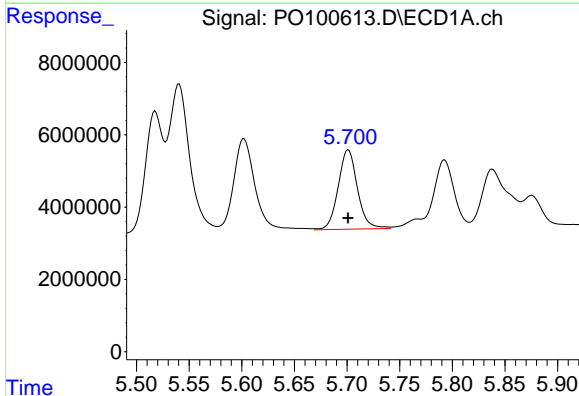
R.T.: 5.602 min  
 Delta R.T.: -0.001 min  
 Response: 36339227  
 Conc: 559.03 ng/ml

Instrument :  
 ECD\_O  
 ClientSampleId :



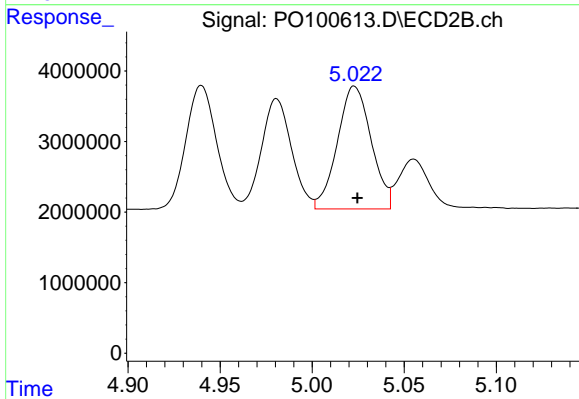
#18 AR-1242-3

R.T.: 4.940 min  
 Delta R.T.: -0.001 min  
 Response: 20367886  
 Conc: 531.57 ng/ml



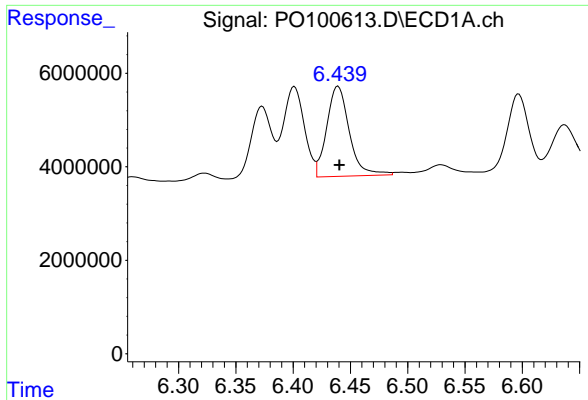
#19 AR-1242-4

R.T.: 5.701 min  
 Delta R.T.: 0.000 min  
 Response: 27976911  
 Conc: 558.68 ng/ml



#19 AR-1242-4

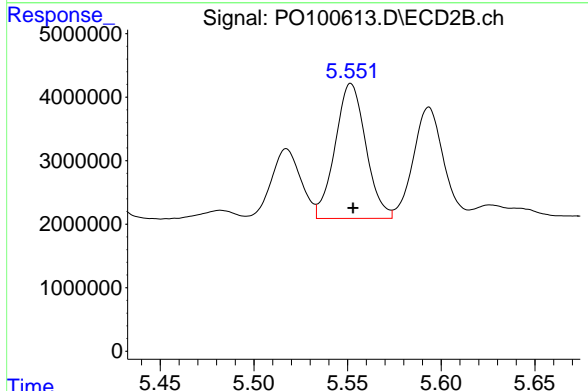
R.T.: 5.023 min  
 Delta R.T.: -0.002 min  
 Response: 22272887  
 Conc: 534.36 ng/ml



#20 AR-1242-5

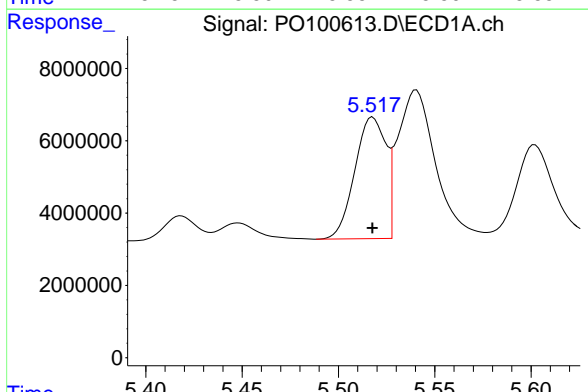
R.T.: 6.439 min  
Delta R.T.: -0.001 min  
Response: 26354704  
Conc: 509.20 ng/ml

Instrument :  
ECD\_O  
ClientSampleId :



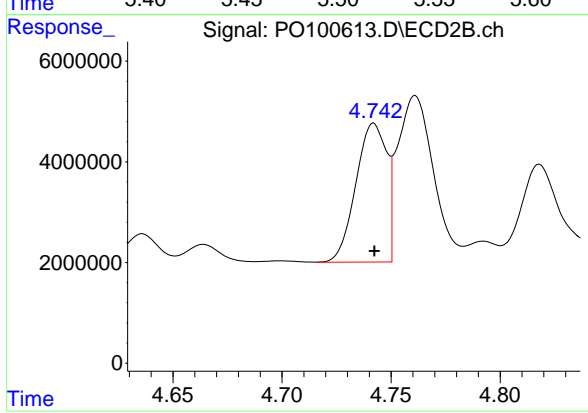
#20 AR-1242-5

R.T.: 5.552 min  
Delta R.T.: -0.001 min  
Response: 24235405  
Conc: 528.07 ng/ml



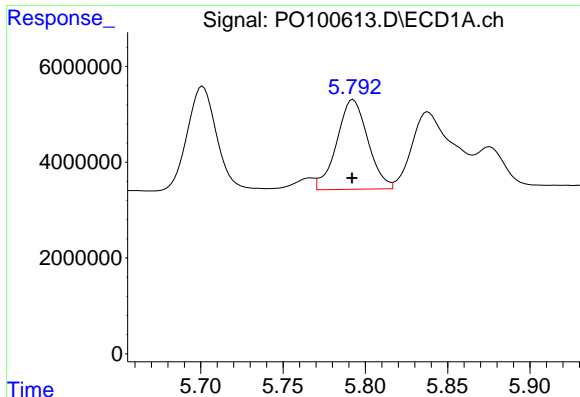
#21 AR-1248-1

R.T.: 5.518 min  
Delta R.T.: 0.000 min  
Response: 37651468  
Conc: 686.32 ng/ml



#21 AR-1248-1

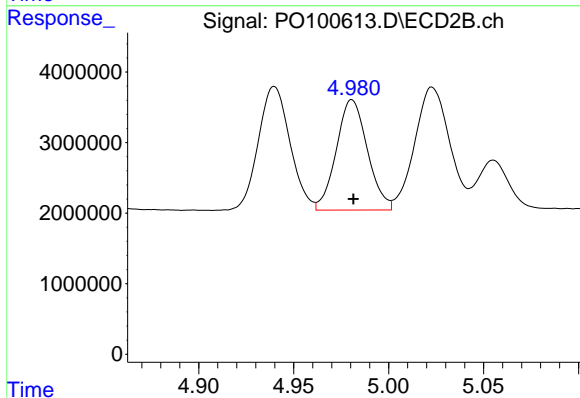
R.T.: 4.742 min  
Delta R.T.: 0.000 min  
Response: 27026735  
Conc: 675.86 ng/ml



#22 AR-1248-2

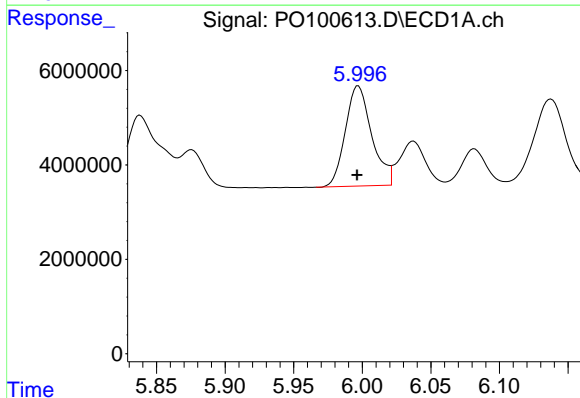
R.T.: 5.793 min  
 Delta R.T.: 0.000 min  
 Response: 24626906  
 Conc: 285.14 ng/ml

Instrument :  
 ECD\_O  
 ClientSampleId :



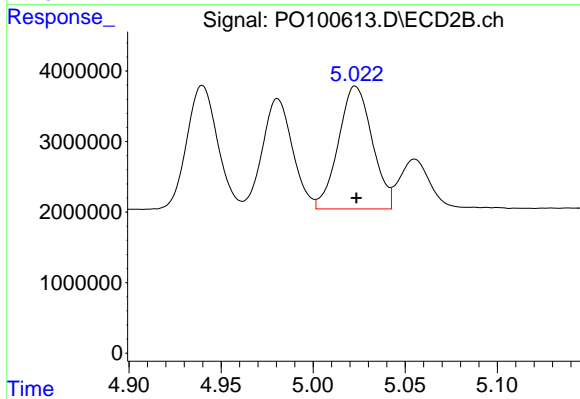
#22 AR-1248-2

R.T.: 4.981 min  
 Delta R.T.: 0.000 min  
 Response: 17860102  
 Conc: 296.86 ng/ml



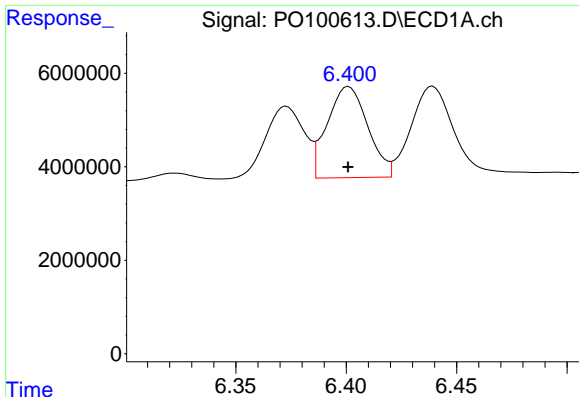
#23 AR-1248-3

R.T.: 5.997 min  
 Delta R.T.: 0.000 min  
 Response: 28416644  
 Conc: 323.75 ng/ml



#23 AR-1248-3

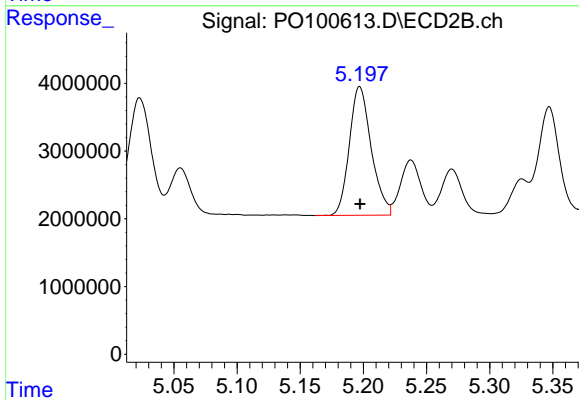
R.T.: 5.023 min  
 Delta R.T.: 0.000 min  
 Response: 22272887  
 Conc: 356.31 ng/ml



#24 AR-1248-4

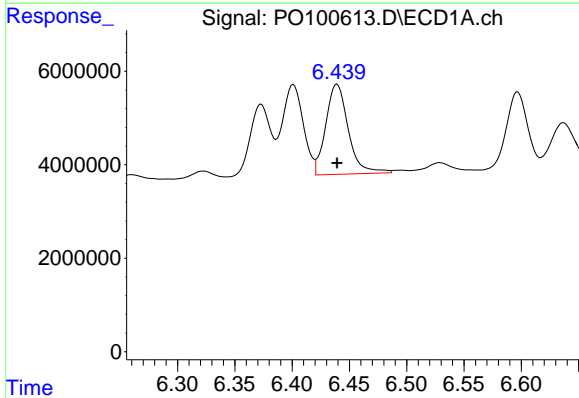
R.T.: 6.401 min  
 Delta R.T.: 0.000 min  
 Response: 24912275  
 Conc: 277.09 ng/ml

Instrument :  
 ECD\_O  
 ClientSampleId :



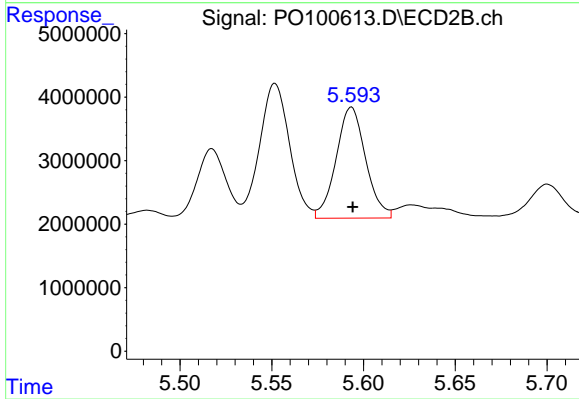
#24 AR-1248-4

R.T.: 5.197 min  
 Delta R.T.: 0.000 min  
 Response: 22972263  
 Conc: 318.92 ng/ml



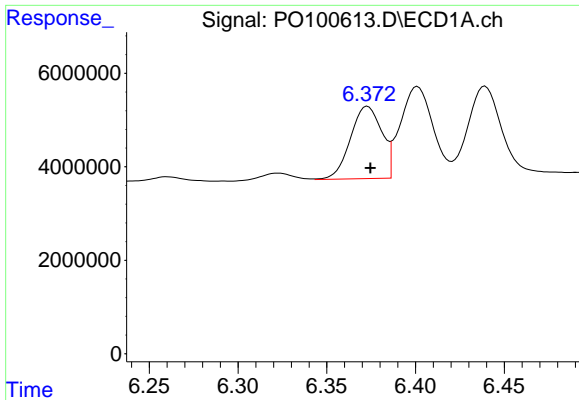
#25 AR-1248-5

R.T.: 6.439 min  
 Delta R.T.: 0.000 min  
 Response: 26354704  
 Conc: 293.61 ng/ml



#25 AR-1248-5

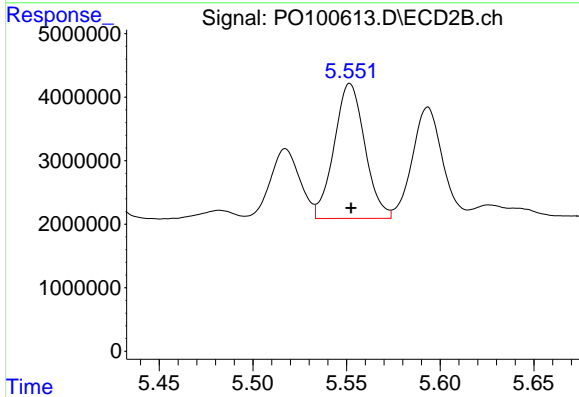
R.T.: 5.593 min  
 Delta R.T.: 0.000 min  
 Response: 19598305  
 Conc: 317.68 ng/ml



#26 AR-1254-1

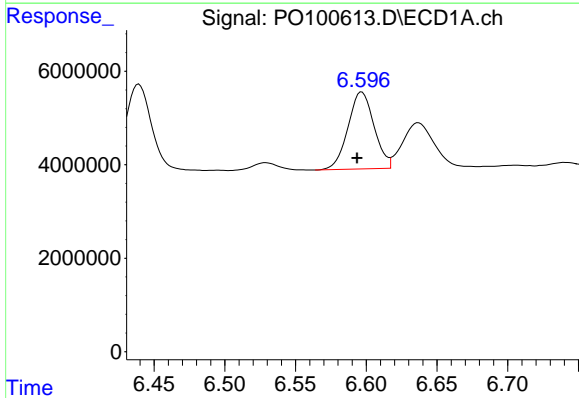
R.T.: 6.373 min  
 Delta R.T.: -0.002 min  
 Response: 19000269  
 Conc: 180.75 ng/ml

Instrument :  
 ECD\_O  
 ClientSampleId :



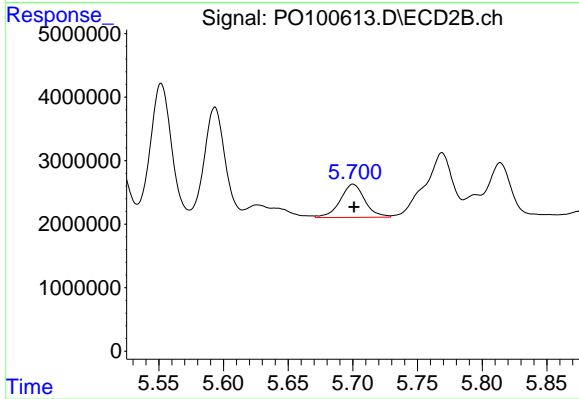
#26 AR-1254-1

R.T.: 5.552 min  
 Delta R.T.: 0.000 min  
 Response: 24235405  
 Conc: 236.14 ng/ml



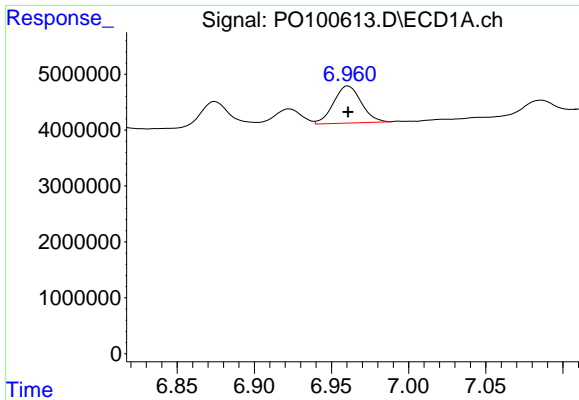
#27 AR-1254-2

R.T.: 6.597 min  
 Delta R.T.: 0.003 min  
 Response: 21096582  
 Conc: 142.87 ng/ml



#27 AR-1254-2

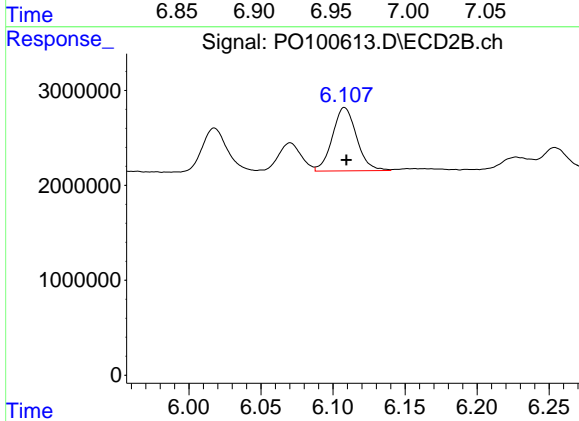
R.T.: 5.700 min  
 Delta R.T.: 0.000 min  
 Response: 6925610  
 Conc: 75.38 ng/ml



#28 AR-1254-3

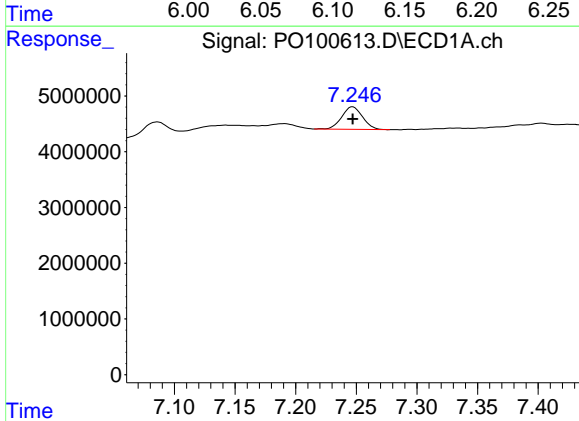
R.T.: 6.961 min  
 Delta R.T.: 0.000 min  
 Response: 8290185  
 Conc: 59.20 ng/ml

Instrument :  
 ECD\_O  
 ClientSampleId :



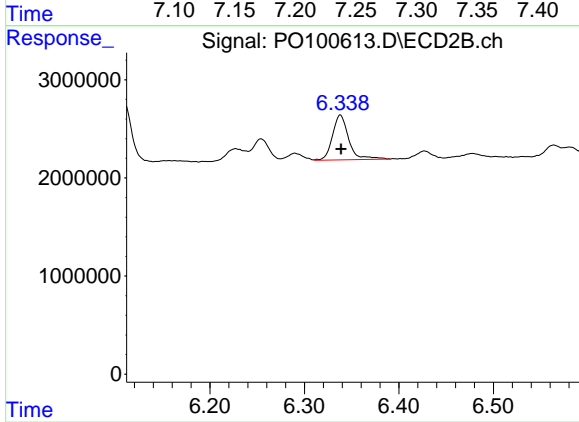
#28 AR-1254-3

R.T.: 6.108 min  
 Delta R.T.: -0.001 min  
 Response: 7813565  
 Conc: 57.78 ng/ml



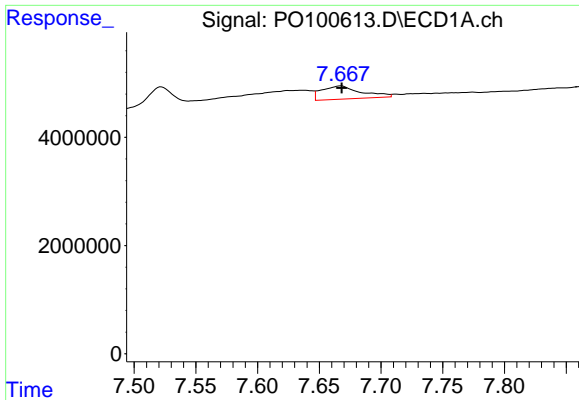
#29 AR-1254-4

R.T.: 7.247 min  
 Delta R.T.: 0.000 min  
 Response: 4825373  
 Conc: 56.76 ng/ml



#29 AR-1254-4

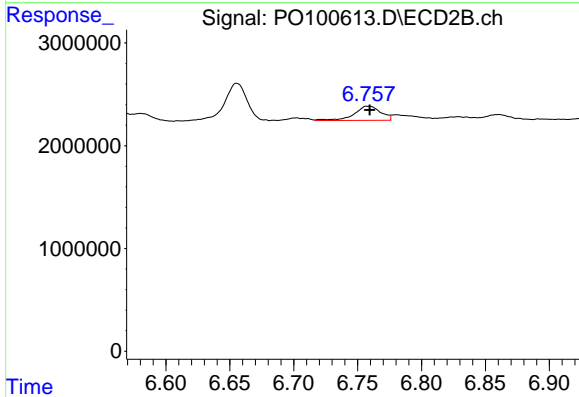
R.T.: 6.338 min  
 Delta R.T.: 0.000 min  
 Response: 5449493  
 Conc: 75.55 ng/ml



#30 AR-1254-5

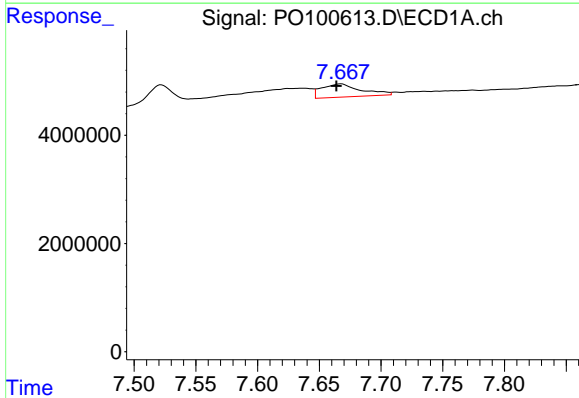
R.T.: 7.668 min  
 Delta R.T.: 0.000 min  
 Response: 5413166  
 Conc: 45.75 ng/ml

Instrument :  
 ECD\_O  
 ClientSampleId :



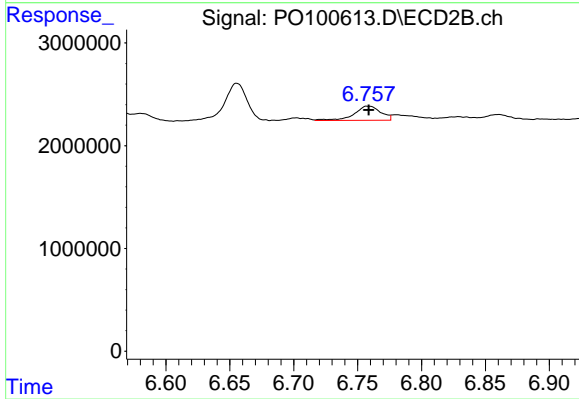
#30 AR-1254-5

R.T.: 6.758 min  
 Delta R.T.: -0.001 min  
 Response: 2007655  
 Conc: 17.42 ng/ml



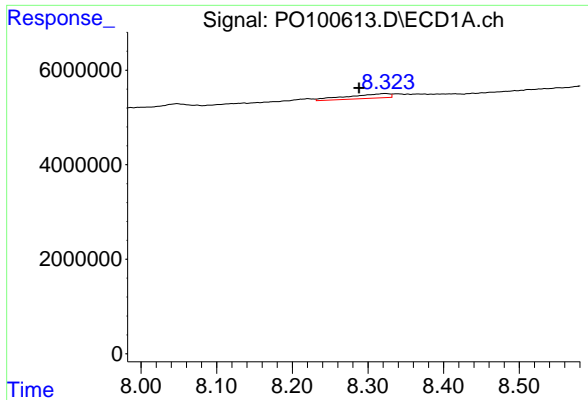
#36 AR-1262-1

R.T.: 7.668 min  
 Delta R.T.: 0.004 min  
 Response: 5413166  
 Conc: 54.19 ng/ml



#36 AR-1262-1

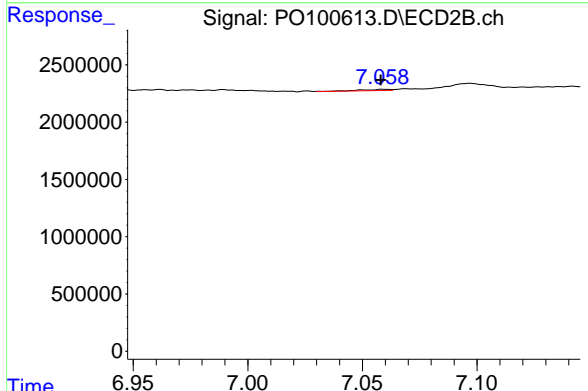
R.T.: 6.758 min  
 Delta R.T.: 0.000 min  
 Response: 2007655  
 Conc: 32.19 ng/ml



#37 AR-1262-2

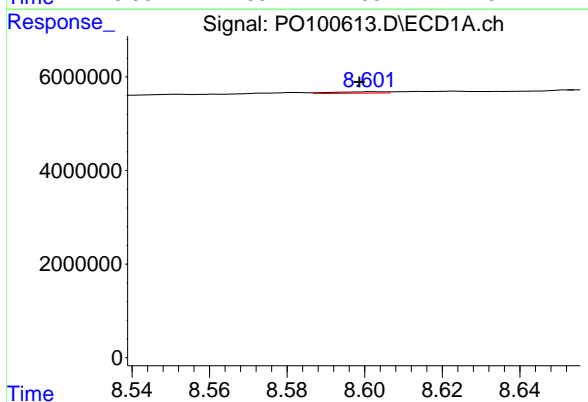
R.T.: 8.323 min  
 Delta R.T.: 0.035 min  
 Response: 3761124  
 Conc: 15.85 ng/ml

Instrument :  
 ECD\_O  
 ClientSampleId :



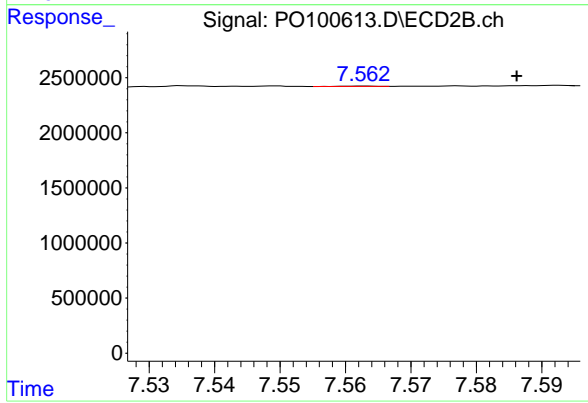
#37 AR-1262-2

R.T.: 7.059 min  
 Delta R.T.: 0.001 min  
 Response: 99203  
 Conc: 0.88 ng/ml



#38 AR-1262-3

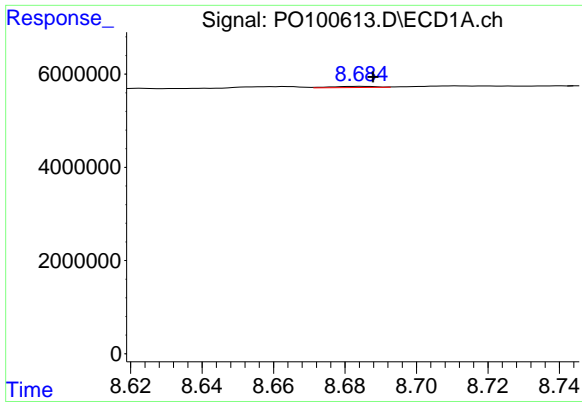
R.T.: 8.603 min  
 Delta R.T.: 0.004 min  
 Response: 270761  
 Conc: 1.67 ng/ml



#38 AR-1262-3

R.T.: 7.562 min  
 Delta R.T.: -0.024 min  
 Response: 9228  
 Conc: 0.12 ng/ml

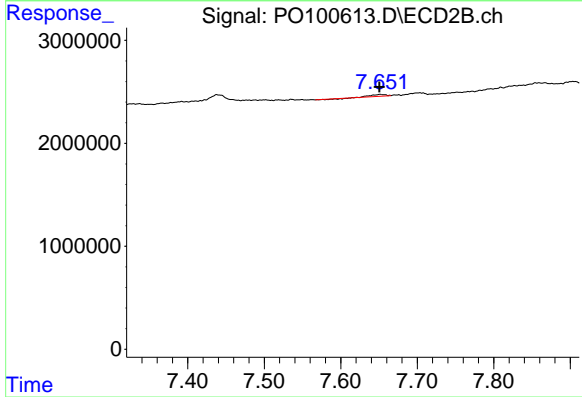




#39 AR-1262-4

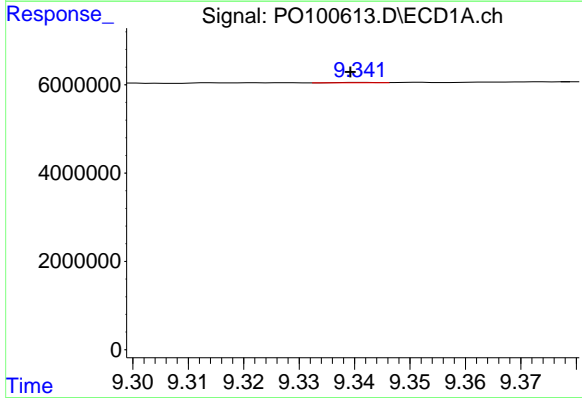
R.T.: 8.685 min  
 Delta R.T.: -0.003 min  
 Response: 239841  
 Conc: 1.86 ng/ml

Instrument :  
 ECD\_O  
 ClientSampleId :



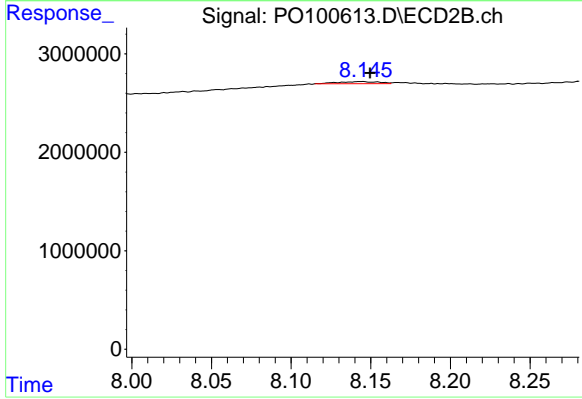
#39 AR-1262-4

R.T.: 7.652 min  
 Delta R.T.: 0.001 min  
 Response: 187570  
 Conc: 1.27 ng/ml



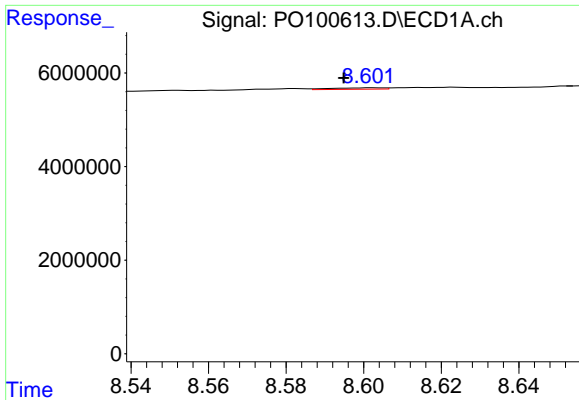
#40 AR-1262-5

R.T.: 9.341 min  
 Delta R.T.: 0.002 min  
 Response: 39670  
 Conc: 0.50 ng/ml



#40 AR-1262-5

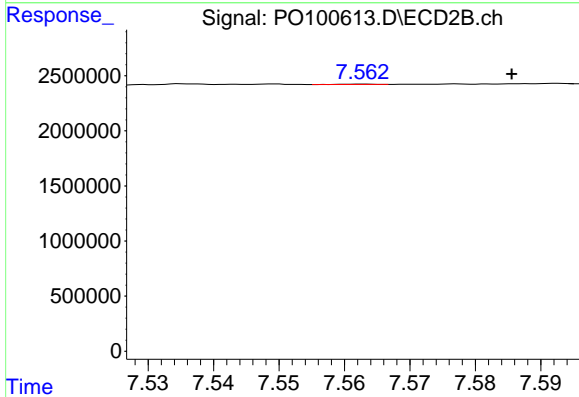
R.T.: 8.144 min  
 Delta R.T.: -0.005 min  
 Response: 378341  
 Conc: 5.92 ng/ml



#41 AR-1268-1

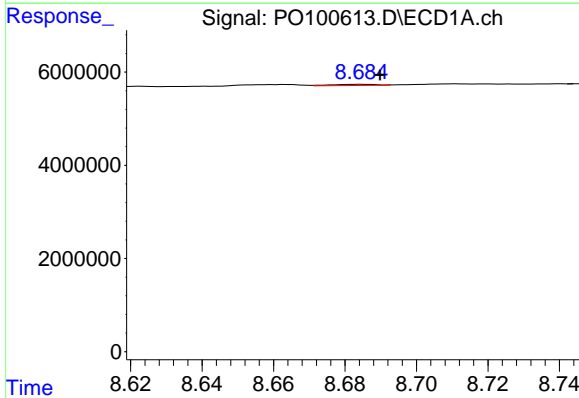
R.T.: 8.603 min  
 Delta R.T.: 0.008 min  
 Response: 270761  
 Conc: 0.96 ng/ml

Instrument :  
 ECD\_O  
 ClientSampleId :



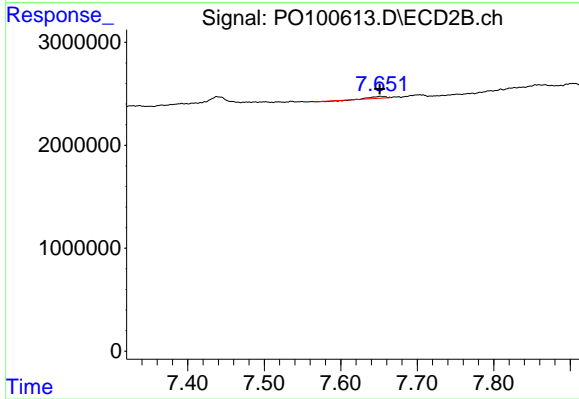
#41 AR-1268-1

R.T.: 7.562 min  
 Delta R.T.: -0.023 min  
 Response: 9228  
 Conc: 0.04 ng/ml



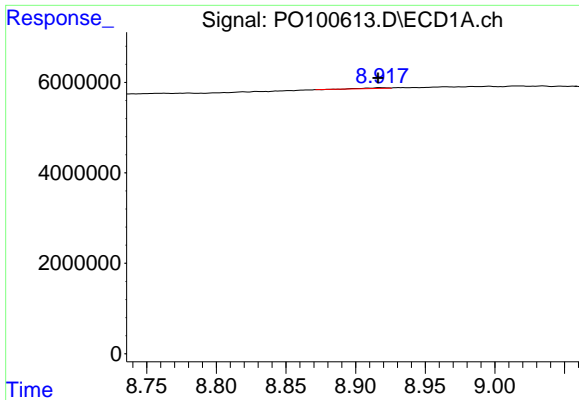
#42 AR-1268-2

R.T.: 8.685 min  
 Delta R.T.: -0.005 min  
 Response: 239841  
 Conc: 0.95 ng/ml



#42 AR-1268-2

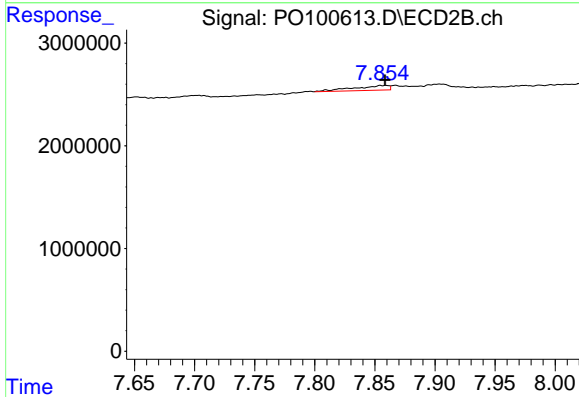
R.T.: 7.652 min  
 Delta R.T.: 0.000 min  
 Response: 187570  
 Conc: 0.93 ng/ml



#43 AR-1268-3

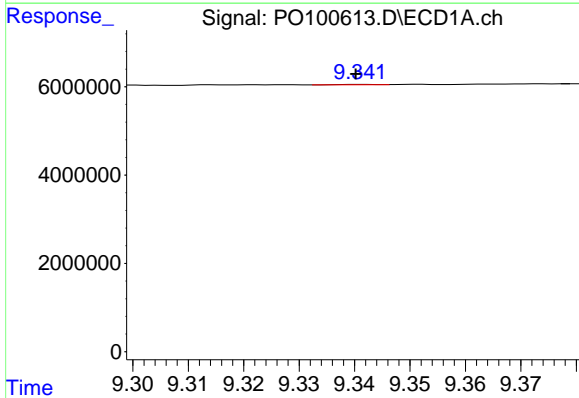
R.T.: 8.918 min  
 Delta R.T.: 0.002 min  
 Response: 200815  
 Conc: 0.88 ng/ml

Instrument :  
 ECD\_O  
 ClientSampleId :



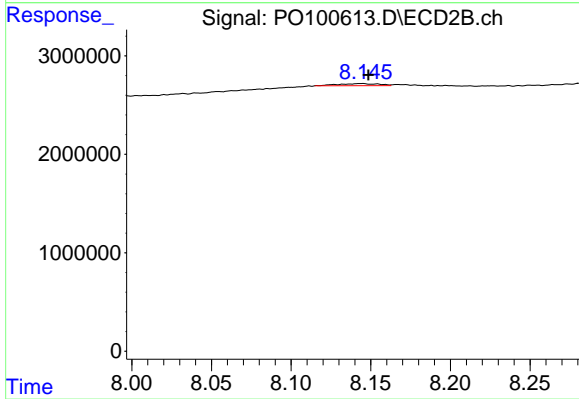
#43 AR-1268-3

R.T.: 7.859 min  
 Delta R.T.: 0.000 min  
 Response: 923633  
 Conc: 4.90 ng/ml



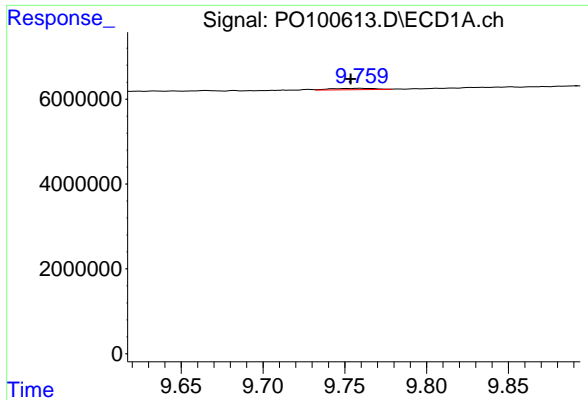
#44 AR-1268-4

R.T.: 9.341 min  
 Delta R.T.: 0.001 min  
 Response: 39670  
 Conc: 0.51 ng/ml



#44 AR-1268-4

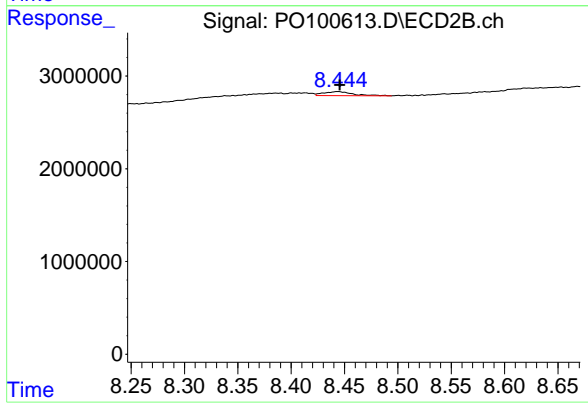
R.T.: 8.144 min  
 Delta R.T.: -0.004 min  
 Response: 378341  
 Conc: 5.63 ng/ml



#45 AR-1268-5

R.T.: 9.759 min  
Delta R.T.: 0.006 min  
Response: 583282  
Conc: 0.81 ng/ml

Instrument :  
ECD\_O  
ClientSampleId :



#45 AR-1268-5

R.T.: 8.444 min  
Delta R.T.: -0.002 min  
Response: 794871  
Conc: 1.53 ng/ml