

Data Path : Z:\pestpcbsrv\HPCHEM1\ECD_0\Data\PO122024\
 Data File : PO108723.D
 Signal(s) : Signal #1: ECD1A.ch Signal #2: ECD2B.ch
 Acq On : 20 Dec 2024 20:11
 Operator : YP/AJ
 Sample : AR1660CCC500
 Misc :
 ALS Vial : 3 Sample Multiplier: 1

Instrument :
 ECD_0
ClientSampleId :
 AR1660CCC500

Integration File signal 1: autoint1.e
 Integration File signal 2: autoint2.e
 Quant Time: Dec 21 01:24:59 2024
 Quant Method : Z:\pestpcbsrv\HPCHEM1\ECD_0\methods\PO120624.M
 Quant Title : GC EXTRACTABLES
 QLast Update : Sat Dec 07 05:58:15 2024
 Response via : Initial Calibration
 Integrator: ChemStation

Volume Inj. : 2 µl
 Signal #1 Phase : ZB-MR1 Signal #2 Phase: ZB-MR2
 Signal #1 Info : 30Mx0.32mmx 0.50µ Signal #2 Info : 30M x 0.32mm x 0.25µm

Compound	RT#1	RT#2	Resp#1	Resp#2	ng/ml	ng/ml
System Monitoring Compounds						
1) SA Tetrachlo...	3.706	3.703	437.2E6	267.7E6	50.252	52.799
2) SA Decachlor...	8.774	8.724	323.9E6	196.9E6	44.352	50.809
Target Compounds						
3) L1 AR-1016-1	4.803	4.790	146.3E6	84869971	474.426	528.870
4) L1 AR-1016-2	4.822	4.810	203.5E6	118.3E6	487.550	532.860
5) L1 AR-1016-3	4.878	4.986	143.2E6	65706088	489.361	522.166
6) L1 AR-1016-4	4.999	5.027	111.7E6	52891879	483.224	504.665
7) L1 AR-1016-5	5.257	5.241	120.5E6	74430857	478.875	550.479
8) L2 AR-1221-1	3.919	3.914	15476299	9562376	136.784	153.928
9) L2 AR-1221-2	4.006	4.002	22957224	14090100	264.727	296.978
10) L2 AR-1221-3	4.083	4.078	79065685	48237941	311.031	343.118
11) L3 AR-1232-1	4.083	4.078	79065685	48237941	386.119	430.497
12) L3 AR-1232-2	4.579	4.810	111.8E6	118.3E6	977.809	1119.054
13) L3 AR-1232-3	4.822	4.986	203.5E6	65706088	1030.566	1088.802
14) L3 AR-1232-4	4.999	5.069	111.7E6	66078078	1030.731	1189.386
15) L3 AR-1232-5	5.041	5.241	88994573	74430857	1136.157	1292.737
16) L4 AR-1242-1	4.803	4.790	146.3E6	84869971	568.672	625.111
17) L4 AR-1242-2	4.822	4.810	203.5E6	118.3E6	589.615	638.119
18) L4 AR-1242-3	4.878	4.986	143.2E6	65706088	593.680	623.502
19) L4 AR-1242-4	4.999	5.069	111.7E6	66078078	585.747	615.661
20) L4 AR-1242-5	5.654	5.593	37119232	72952733	178.741	577.157 #
21) L5 AR-1248-1	4.803	4.790	146.3E6	84869971	730.671	807.371
22) L5 AR-1248-2	5.041	5.027	88994573	52891879	321.065	354.201
23) L5 AR-1248-3	5.257	5.069	120.5E6	66078078	353.427	417.129
24) L5 AR-1248-4	5.612	5.241	125.0E6	74430857	262.318	407.728 #
25) L5 AR-1248-5	5.654	5.634	37119232	21383759	109.622	121.773
26) L6 AR-1254-1	5.612	5.593	125.0E6	72952733	243.364	269.365
27) L6 AR-1254-2	5.761	5.740	95014152	55261099	208.612	230.235
28) L6 AR-1254-3	6.184	6.161	210.5E6	108.3E6	292.265	288.354
29) L6 AR-1254-4	6.397	6.372	28614689	13344257	65.209	61.303
30) L6 AR-1254-5	6.817	6.790	279.0E6	160.1E6	439.260	495.892
31) L7 AR-1260-1	6.300	6.275	221.9E6	124.2E6	485.349	530.894
32) L7 AR-1260-2	6.489	6.462	269.9E6	149.3E6	485.738	532.132
33) L7 AR-1260-3	6.858	6.616	216.4E6	139.0E6	466.733	527.284
34) L7 AR-1260-4	7.119	7.088	195.1E6	116.4E6	458.663	546.936
35) L7 AR-1260-5	7.360	7.328	446.5E6	265.0E6	459.400	547.510
36) L8 AR-1262-1	6.858	6.829	216.4E6	126.3E6	328.699	373.817
37) L8 AR-1262-2	7.360	7.328	446.5E6	265.0E6	401.620	463.332
38) L8 AR-1262-3	7.646	7.612	103.3E6	56769732	236.539	252.954
39) L8 AR-1262-4	7.709	7.674	310.4E6	184.4E6	384.952	450.286
40) L8 AR-1262-5	8.208	8.169	108.5E6	66316398	305.656	358.801
41) L9 AR-1268-1	7.646	7.612	103.3E6	56769732	83.064	87.889

Data Path : Z:\pestpcbsrv\HPCHEM1\ECD_0\Data\PO122024\
 Data File : PO108723.D
 Signal(s) : Signal #1: ECD1A.ch Signal #2: ECD2B.ch
 Acq On : 20 Dec 2024 20:11
 Operator : YP/AJ
 Sample : AR1660CCC500
 Misc :
 ALS Vial : 3 Sample Multiplier: 1

Instrument :
 ECD_0
 ClientSampleId :
 AR1660CCC500

Integration File signal 1: autoint1.e
 Integration File signal 2: autoint2.e
 Quant Time: Dec 21 01:24:59 2024
 Quant Method : Z:\pestpcbsrv\HPCHEM1\ECD_0\methods\PO120624.M
 Quant Title : GC EXTRACTABLES
 QLast Update : Sat Dec 07 05:58:15 2024
 Response via : Initial Calibration
 Integrator: ChemStation

Volume Inj. : 2 µl
 Signal #1 Phase : ZB-MR1 Signal #2 Phase: ZB-MR2
 Signal #1 Info : 30Mx0.32mmx 0.50µ Signal #2 Info : 30M x 0.32mm x 0.25µm

	Compound	RT#1	RT#2	Resp#1	Resp#2	ng/ml	ng/ml
42)	L9 AR-1268-2	7.709	7.674	310.4E6	184.4E6	276.720	317.151
43)	L9 AR-1268-3	7.920	7.886	6783087	3712481	7.485	7.442
44)	L9 AR-1268-4	8.208	8.169	108.5E6	66316398	280.401	326.619
45)	L9 AR-1268-5	8.509	8.464	30525572	18013984	11.012	12.132

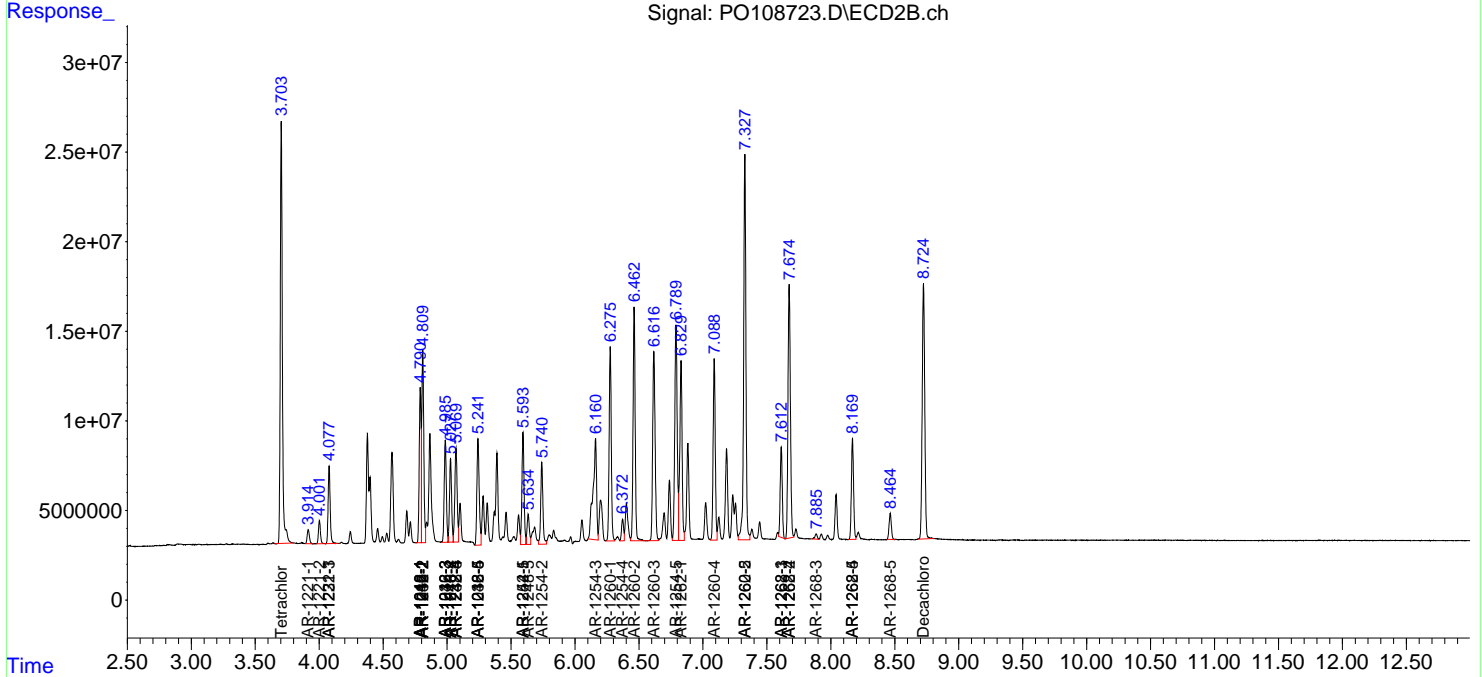
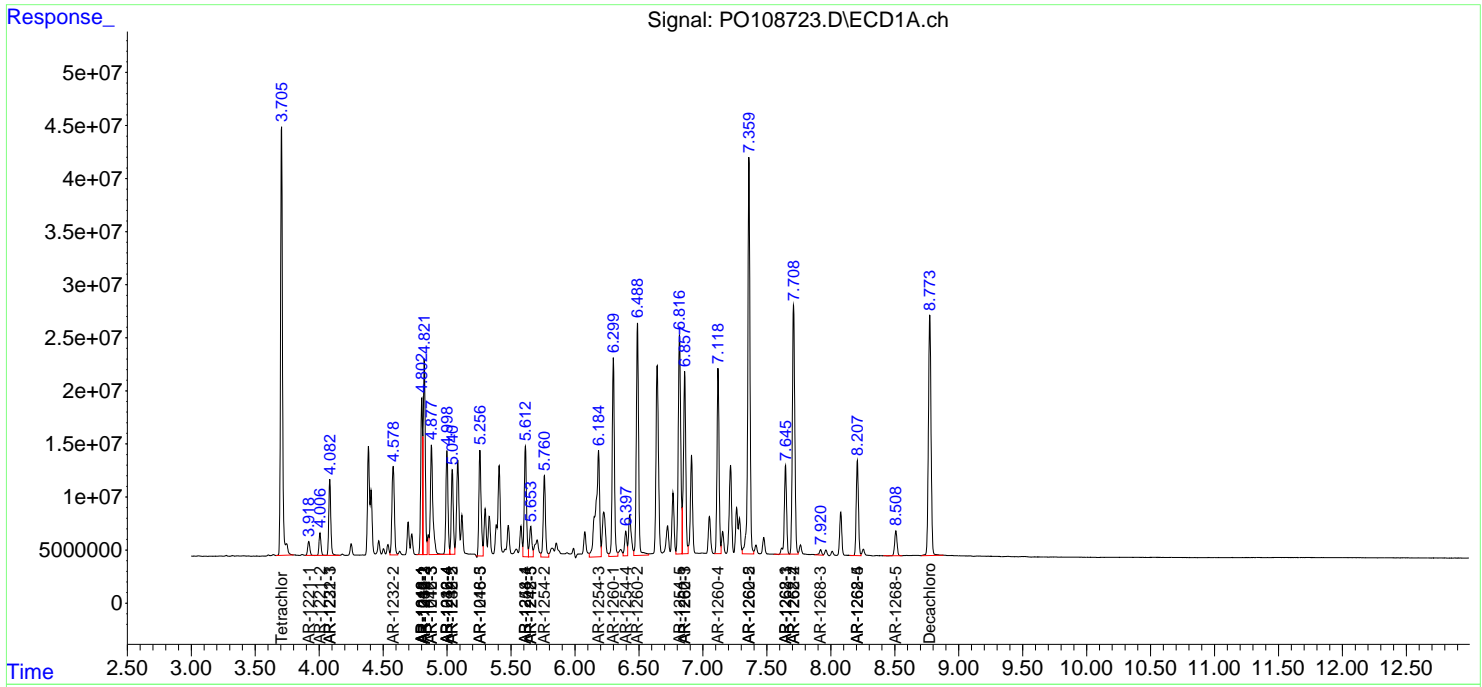
(f)=RT Delta > 1/2 Window (#)=Amounts differ by > 25% (m)=manual int.

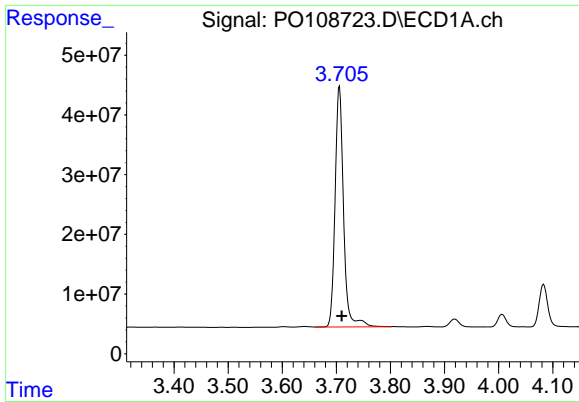
Data Path : Z:\pestpcbsrv\HPCHEM1\ECD_O\Data\PO122024\
 Data File : PO108723.D
 Signal(s) : Signal #1: ECD1A.ch Signal #2: ECD2B.ch
 Acq On : 20 Dec 2024 20:11
 Operator : YP/AJ
 Sample : AR1660CCC500
 Misc :
 ALS Vial : 3 Sample Multiplier: 1

Instrument :
 ECD_O
 ClientSampleId :
 AR1660CCC500

Integration File signal 1: autoint1.e
 Integration File signal 2: autoint2.e
 Quant Time: Dec 21 01:24:59 2024
 Quant Method : Z:\pestpcbsrv\HPCHEM1\ECD_O\methods\PO120624.M
 Quant Title : GC EXTRACTABLES
 QLast Update : Sat Dec 07 05:58:15 2024
 Response via : Initial Calibration
 Integrator: ChemStation

Volume Inj. : 2 µl
 Signal #1 Phase : ZB-MR1 Signal #2 Phase: ZB-MR2
 Signal #1 Info : 30Mx0.32mmx 0.50µ Signal #2 Info : 30M x 0.32mm x 0.25µm

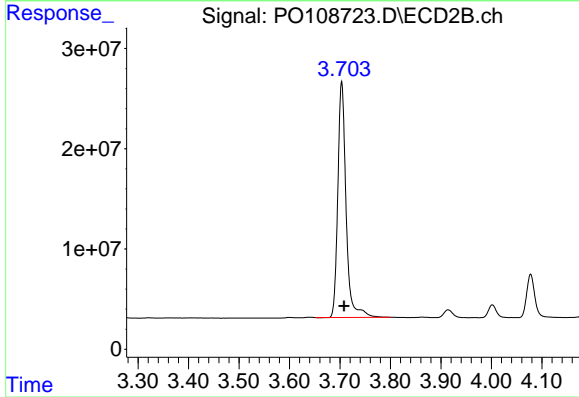




#1 Tetrachloro-m-xylene

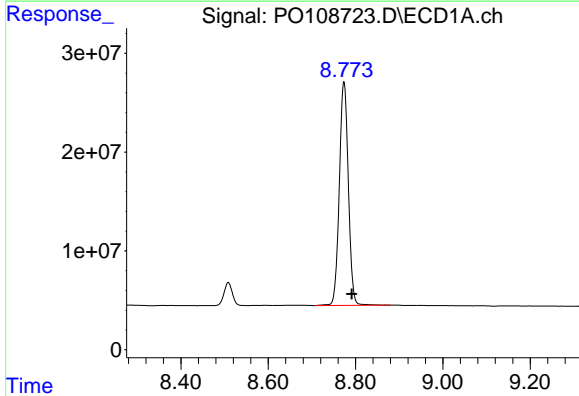
R.T.: 3.706 min
 Delta R.T.: -0.004 min
 Response: 437195531
 Conc: 50.25 ng/ml

Instrument :
 ECD_O
 ClientSampleId :
 AR1660CCC500



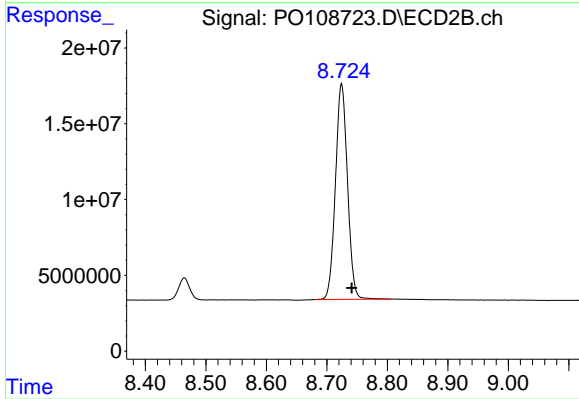
#1 Tetrachloro-m-xylene

R.T.: 3.703 min
 Delta R.T.: -0.005 min
 Response: 267657468
 Conc: 52.80 ng/ml



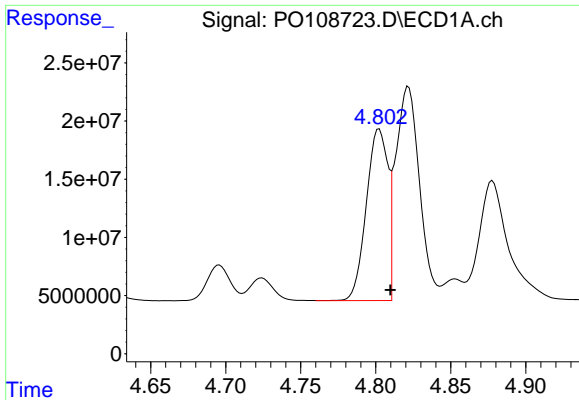
#2 Decachlorobiphenyl

R.T.: 8.774 min
 Delta R.T.: -0.017 min
 Response: 323947913
 Conc: 44.35 ng/ml



#2 Decachlorobiphenyl

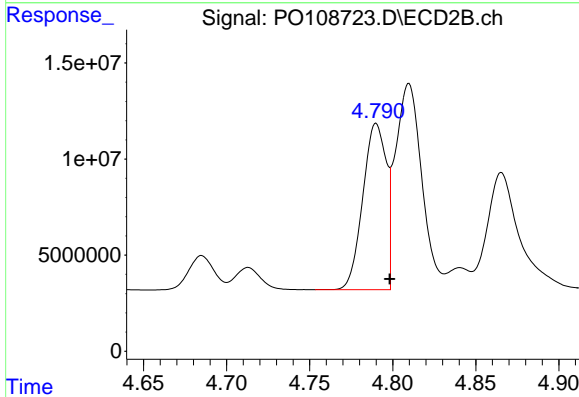
R.T.: 8.724 min
 Delta R.T.: -0.017 min
 Response: 196882095
 Conc: 50.81 ng/ml



#3 AR-1016-1

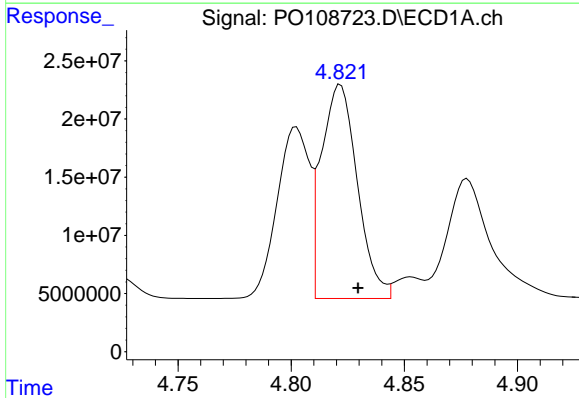
R.T.: 4.803 min
 Delta R.T.: -0.007 min
 Response: 146333655
 Conc: 474.43 ng/ml

Instrument :
 ECD_O
 ClientSampleId :
 AR1660CCC500



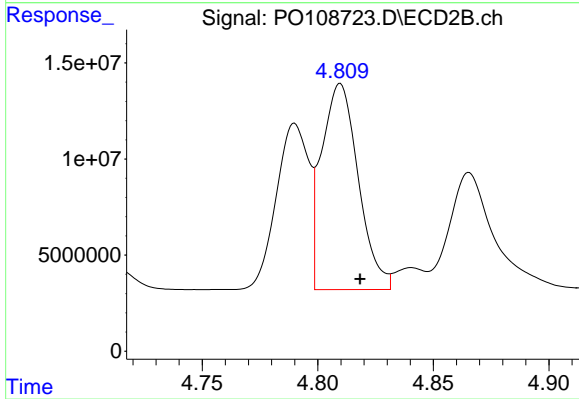
#3 AR-1016-1

R.T.: 4.790 min
 Delta R.T.: -0.008 min
 Response: 84869971
 Conc: 528.87 ng/ml



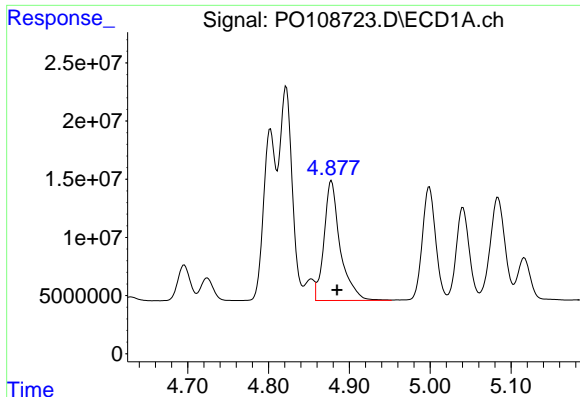
#4 AR-1016-2

R.T.: 4.822 min
 Delta R.T.: -0.008 min
 Response: 203512535
 Conc: 487.55 ng/ml



#4 AR-1016-2

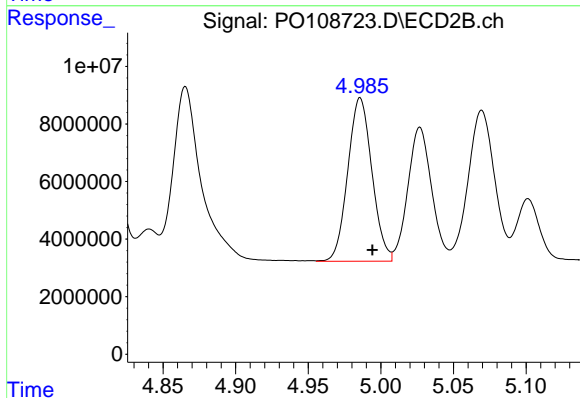
R.T.: 4.810 min
 Delta R.T.: -0.009 min
 Response: 118344463
 Conc: 532.86 ng/ml



#5 AR-1016-3

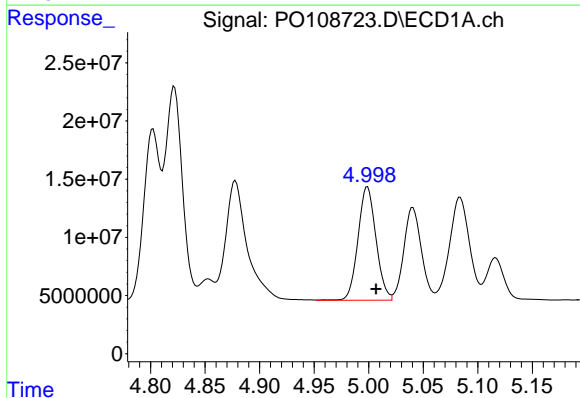
R.T.: 4.878 min
 Delta R.T.: -0.007 min
 Response: 143202451
 Conc: 489.36 ng/ml

Instrument :
 ECD_O
 ClientSampleId :
 AR1660CCC500



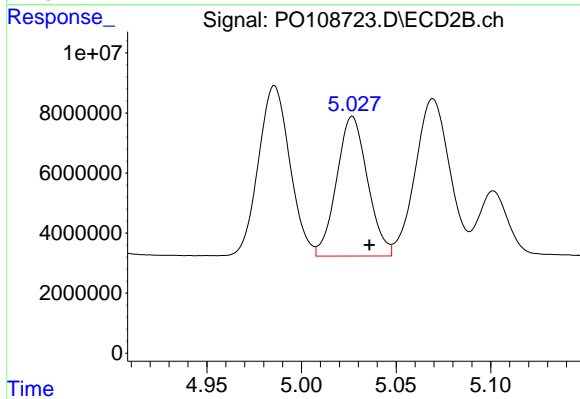
#5 AR-1016-3

R.T.: 4.986 min
 Delta R.T.: -0.008 min
 Response: 65706088
 Conc: 522.17 ng/ml



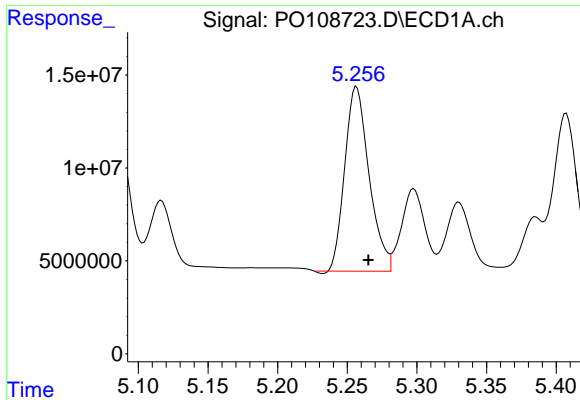
#6 AR-1016-4

R.T.: 4.999 min
 Delta R.T.: -0.008 min
 Response: 111710329
 Conc: 483.22 ng/ml



#6 AR-1016-4

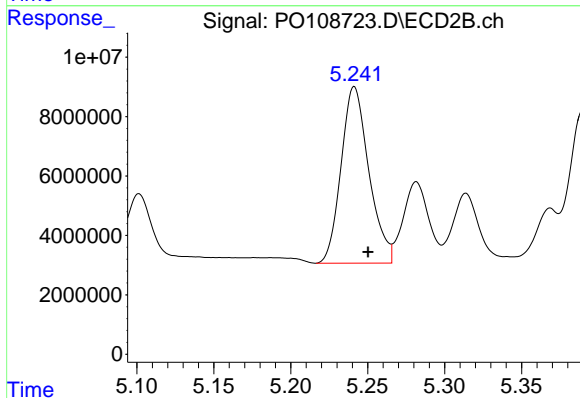
R.T.: 5.027 min
 Delta R.T.: -0.009 min
 Response: 52891879
 Conc: 504.67 ng/ml



#7 AR-1016-5

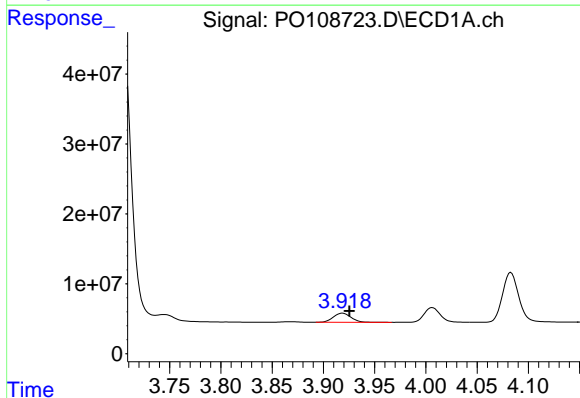
R.T.: 5.257 min
 Delta R.T.: -0.008 min
 Response: 120518521
 Conc: 478.88 ng/ml

Instrument :
 ECD_O
 ClientSampleId :
 AR1660CCC500



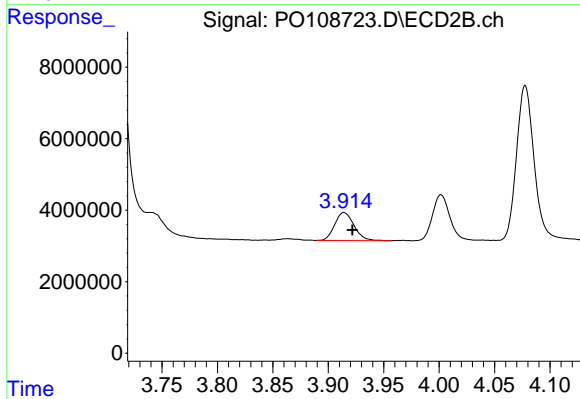
#7 AR-1016-5

R.T.: 5.241 min
 Delta R.T.: -0.009 min
 Response: 74430857
 Conc: 550.48 ng/ml



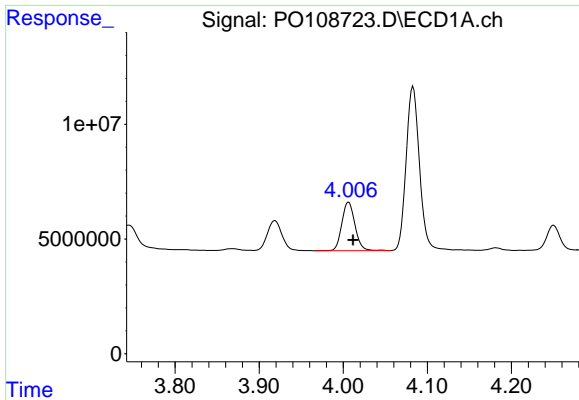
#8 AR-1221-1

R.T.: 3.919 min
 Delta R.T.: -0.007 min
 Response: 15476299
 Conc: 136.78 ng/ml



#8 AR-1221-1

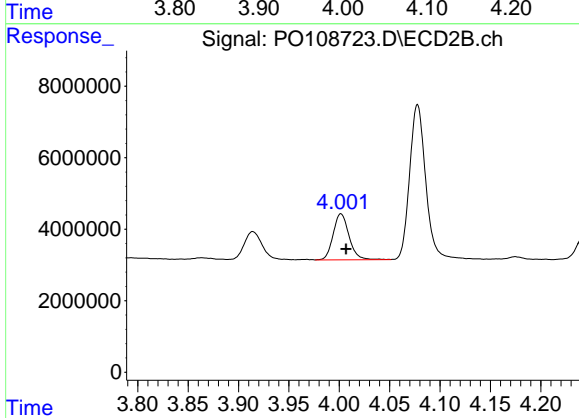
R.T.: 3.914 min
 Delta R.T.: -0.007 min
 Response: 9562376
 Conc: 153.93 ng/ml



#9 AR-1221-2

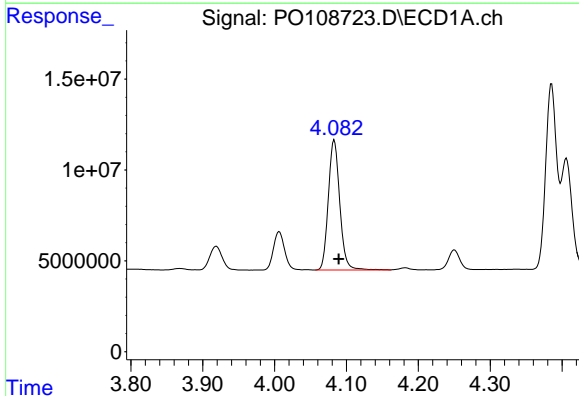
R.T.: 4.006 min
 Delta R.T.: -0.005 min
 Response: 22957224
 Conc: 264.73 ng/ml

Instrument :
 ECD_O
 ClientSampleId :
 AR1660CCC500



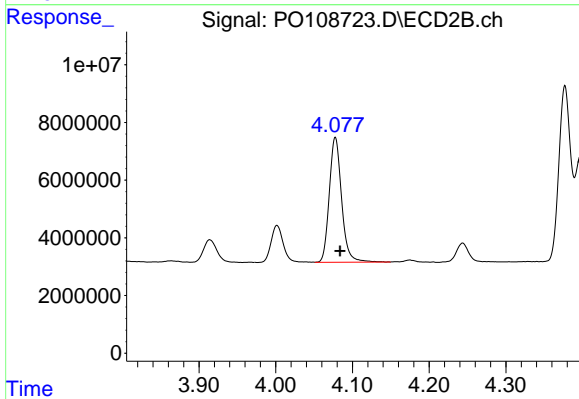
#9 AR-1221-2

R.T.: 4.002 min
 Delta R.T.: -0.005 min
 Response: 14090100
 Conc: 296.98 ng/ml



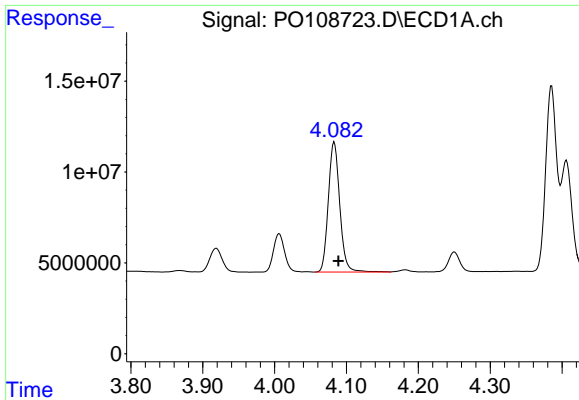
#10 AR-1221-3

R.T.: 4.083 min
 Delta R.T.: -0.006 min
 Response: 79065685
 Conc: 311.03 ng/ml



#10 AR-1221-3

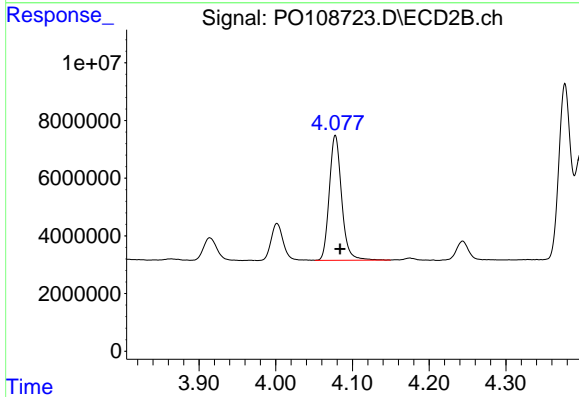
R.T.: 4.078 min
 Delta R.T.: -0.006 min
 Response: 48237941
 Conc: 343.12 ng/ml



#11 AR-1232-1

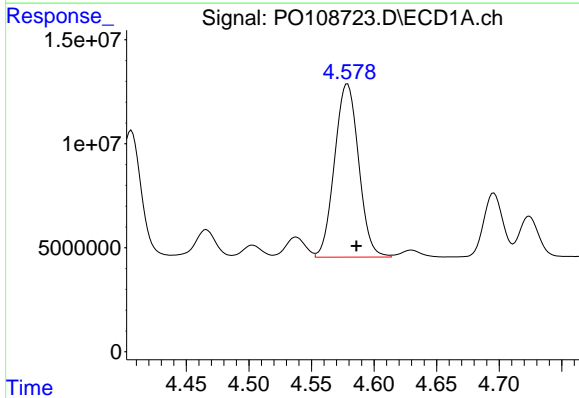
R.T.: 4.083 min
 Delta R.T.: -0.006 min
 Response: 79065685
 Conc: 386.12 ng/ml

Instrument :
 ECD_O
 ClientSampleId :
 AR1660CCC500



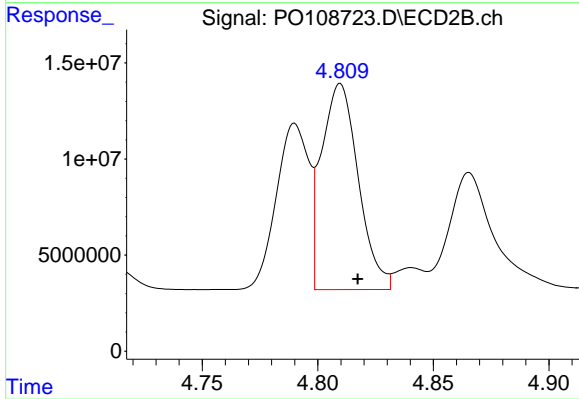
#11 AR-1232-1

R.T.: 4.078 min
 Delta R.T.: -0.006 min
 Response: 48237941
 Conc: 430.50 ng/ml



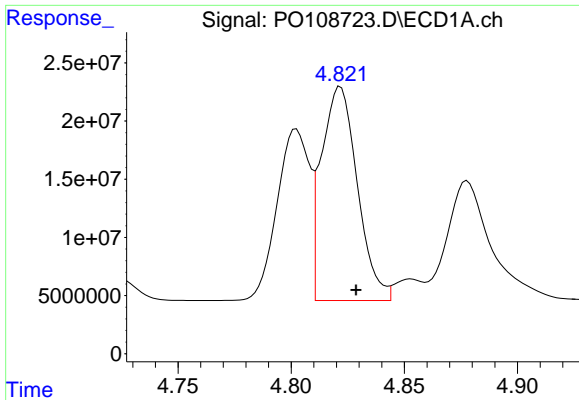
#12 AR-1232-2

R.T.: 4.579 min
 Delta R.T.: -0.007 min
 Response: 111815805
 Conc: 977.81 ng/ml



#12 AR-1232-2

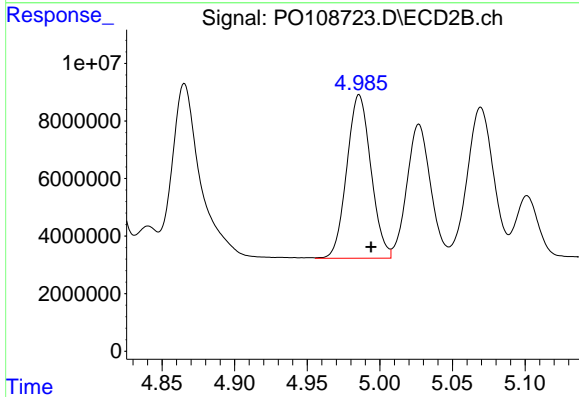
R.T.: 4.810 min
 Delta R.T.: -0.008 min
 Response: 118344463
 Conc: 1119.05 ng/ml



#13 AR-1232-3

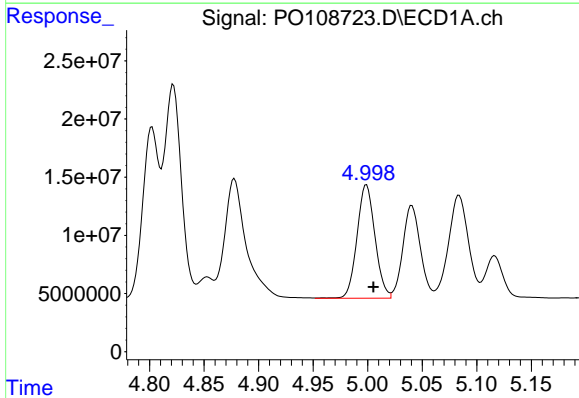
R.T.: 4.822 min
 Delta R.T.: -0.007 min
 Response: 203512535
 Conc: 1030.57 ng/ml

Instrument :
 ECD_O
 ClientSampleId :
 AR1660CCC500



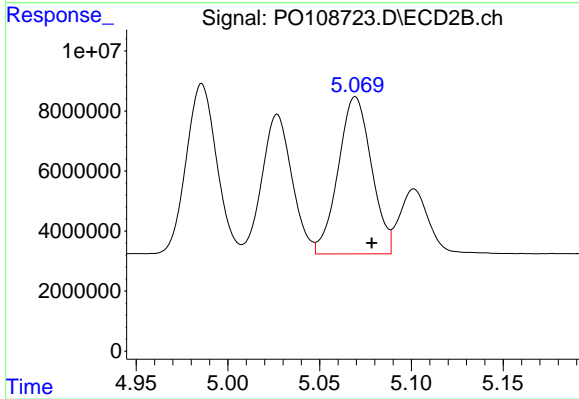
#13 AR-1232-3

R.T.: 4.986 min
 Delta R.T.: -0.008 min
 Response: 65706088
 Conc: 1088.80 ng/ml



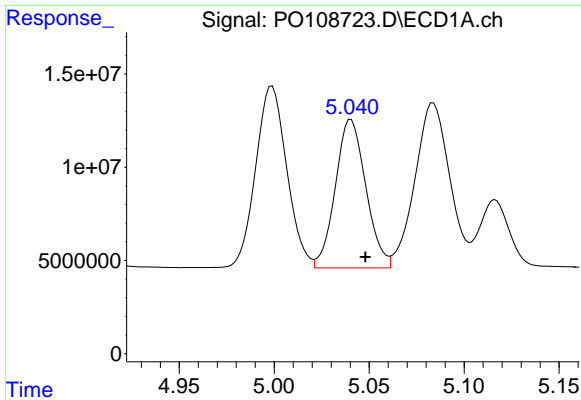
#14 AR-1232-4

R.T.: 4.999 min
 Delta R.T.: -0.006 min
 Response: 111710329
 Conc: 1030.73 ng/ml



#14 AR-1232-4

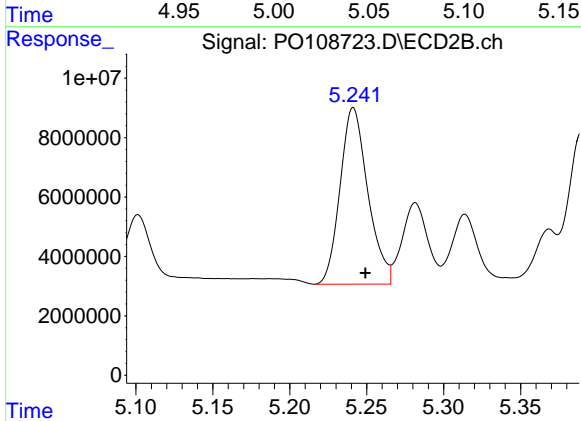
R.T.: 5.069 min
 Delta R.T.: -0.009 min
 Response: 66078078
 Conc: 1189.39 ng/ml



#15 AR-1232-5

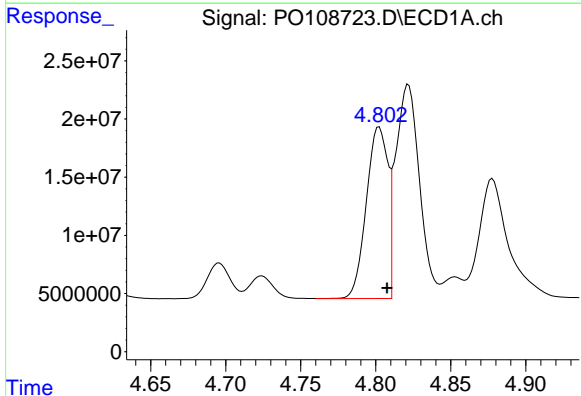
R.T.: 5.041 min
 Delta R.T.: -0.007 min
 Response: 88994573
 Conc: 1136.16 ng/ml

Instrument :
 ECD_O
 ClientSampleId :
 AR1660CCC500



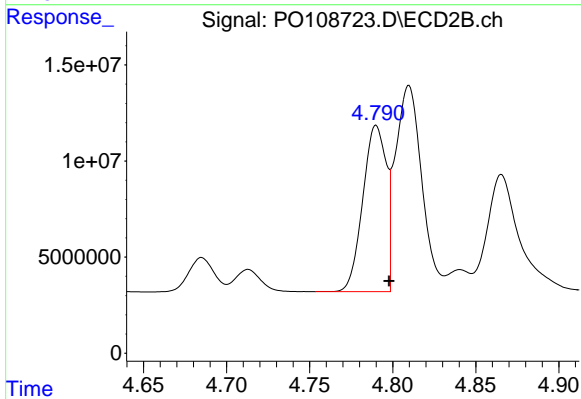
#15 AR-1232-5

R.T.: 5.241 min
 Delta R.T.: -0.008 min
 Response: 74430857
 Conc: 1292.74 ng/ml



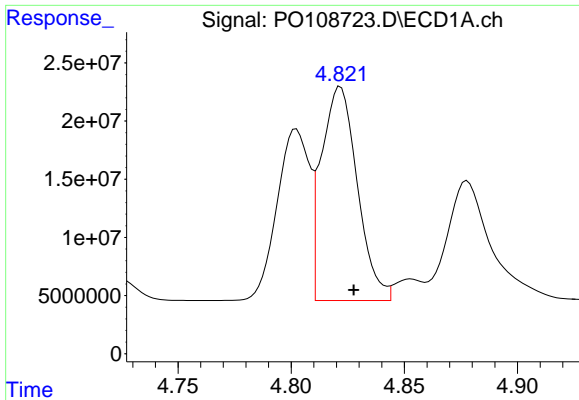
#16 AR-1242-1

R.T.: 4.803 min
 Delta R.T.: -0.005 min
 Response: 146333655
 Conc: 568.67 ng/ml



#16 AR-1242-1

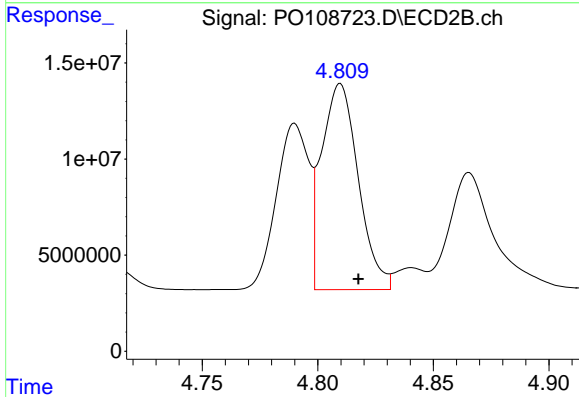
R.T.: 4.790 min
 Delta R.T.: -0.008 min
 Response: 84869971
 Conc: 625.11 ng/ml



#17 AR-1242-2

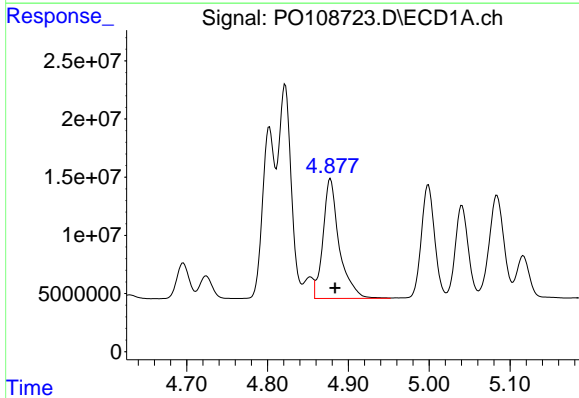
R.T.: 4.822 min
 Delta R.T.: -0.006 min
 Response: 203512535
 Conc: 589.61 ng/ml

Instrument :
 ECD_O
 ClientSampleId :
 AR1660CCC500



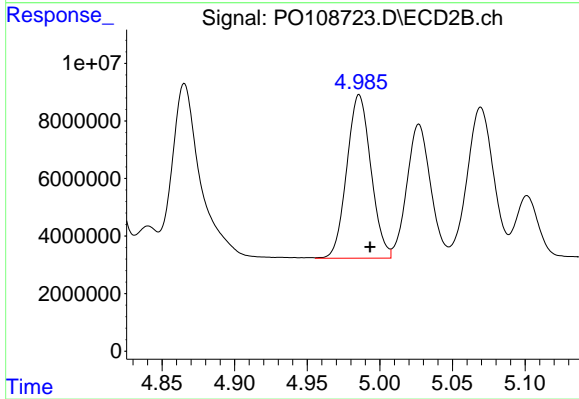
#17 AR-1242-2

R.T.: 4.810 min
 Delta R.T.: -0.008 min
 Response: 118344463
 Conc: 638.12 ng/ml



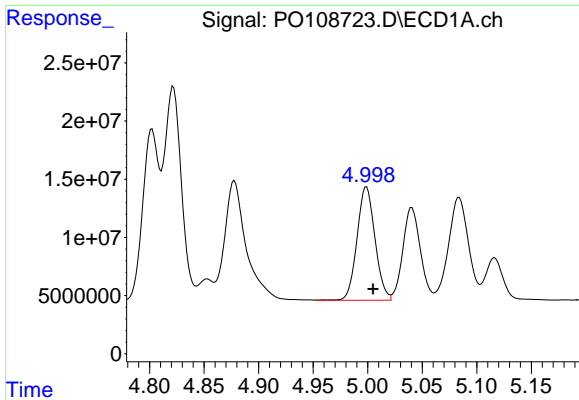
#18 AR-1242-3

R.T.: 4.878 min
 Delta R.T.: -0.006 min
 Response: 143202451
 Conc: 593.68 ng/ml



#18 AR-1242-3

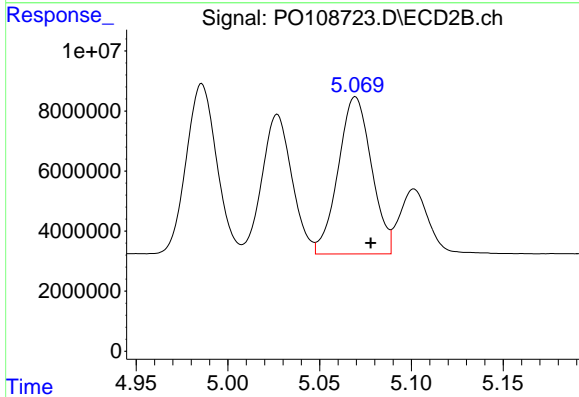
R.T.: 4.986 min
 Delta R.T.: -0.008 min
 Response: 65706088
 Conc: 623.50 ng/ml



#19 AR-1242-4

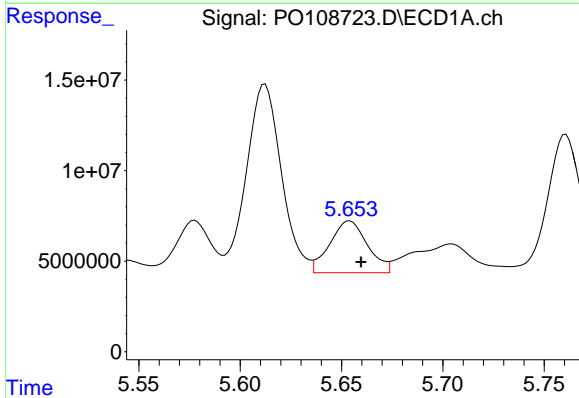
R.T.: 4.999 min
 Delta R.T.: -0.006 min
 Response: 111710329
 Conc: 585.75 ng/ml

Instrument :
 ECD_O
 ClientSampleId :
 AR1660CCC500



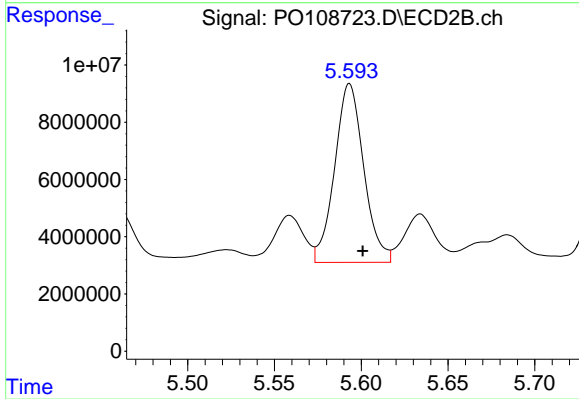
#19 AR-1242-4

R.T.: 5.069 min
 Delta R.T.: -0.008 min
 Response: 66078078
 Conc: 615.66 ng/ml



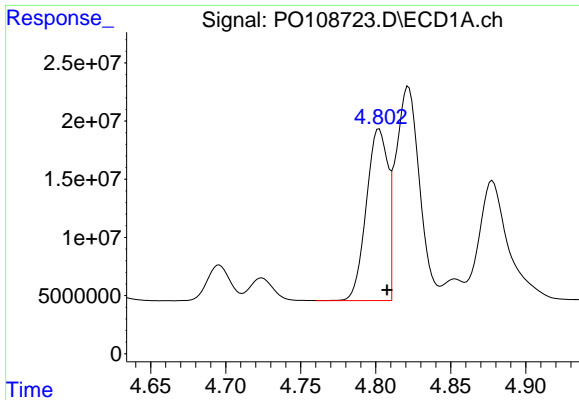
#20 AR-1242-5

R.T.: 5.654 min
 Delta R.T.: -0.006 min
 Response: 37119232
 Conc: 178.74 ng/ml



#20 AR-1242-5

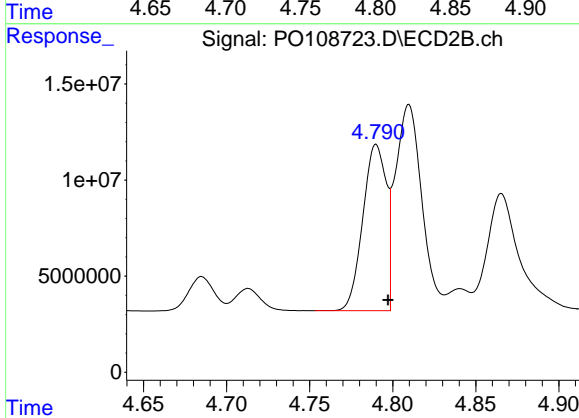
R.T.: 5.593 min
 Delta R.T.: -0.008 min
 Response: 72952733
 Conc: 577.16 ng/ml



#21 AR-1248-1

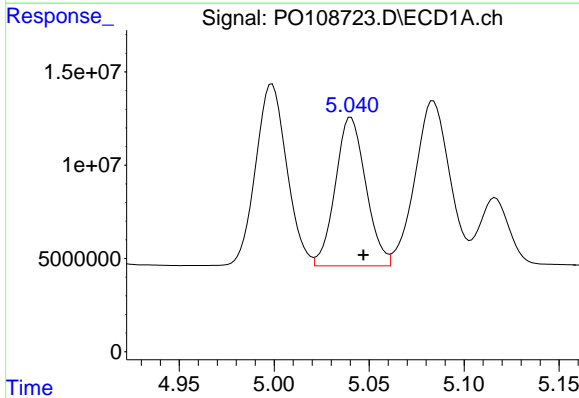
R.T.: 4.803 min
 Delta R.T.: -0.005 min
 Response: 146333655
 Conc: 730.67 ng/ml

Instrument :
 ECD_O
 ClientSampleId :
 AR1660CCC500



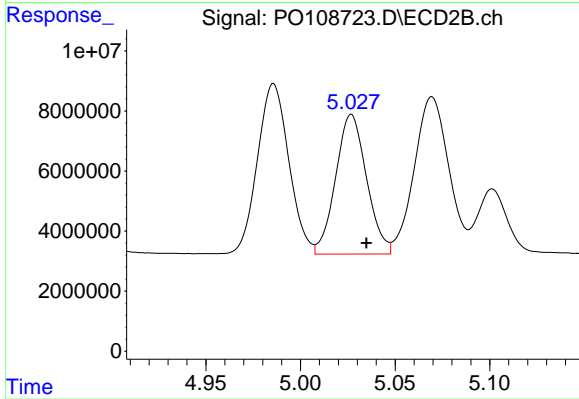
#21 AR-1248-1

R.T.: 4.790 min
 Delta R.T.: -0.007 min
 Response: 84869971
 Conc: 807.37 ng/ml



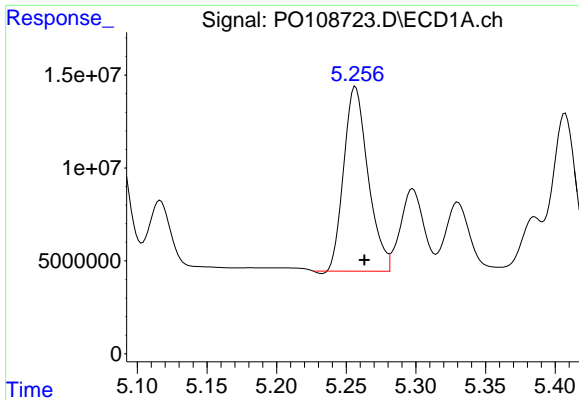
#22 AR-1248-2

R.T.: 5.041 min
 Delta R.T.: -0.006 min
 Response: 88994573
 Conc: 321.07 ng/ml



#22 AR-1248-2

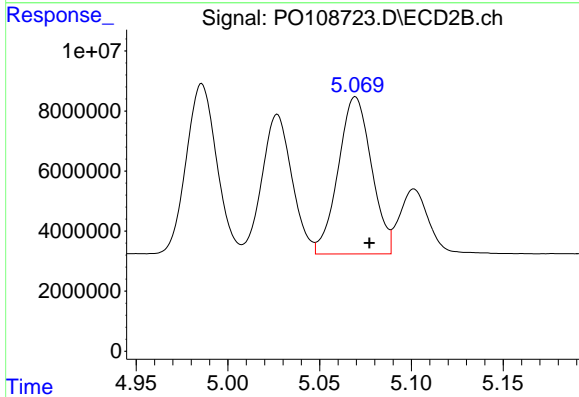
R.T.: 5.027 min
 Delta R.T.: -0.008 min
 Response: 52891879
 Conc: 354.20 ng/ml



#23 AR-1248-3

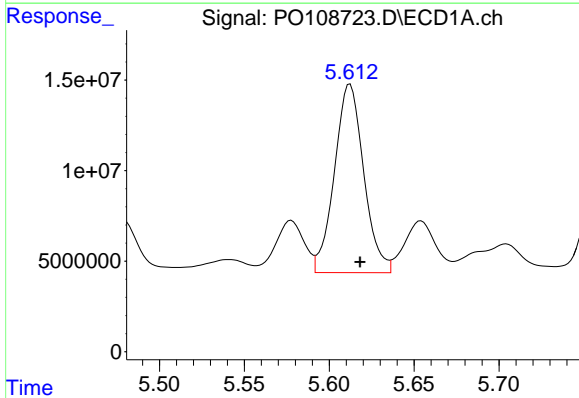
R.T.: 5.257 min
 Delta R.T.: -0.006 min
 Response: 120518521
 Conc: 353.43 ng/ml

Instrument :
 ECD_O
 ClientSampleId :
 AR1660CCC500



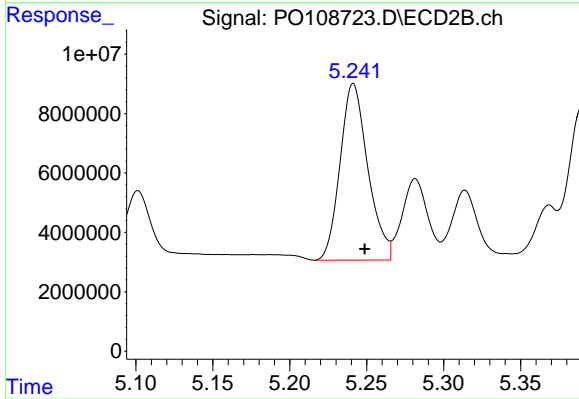
#23 AR-1248-3

R.T.: 5.069 min
 Delta R.T.: -0.008 min
 Response: 66078078
 Conc: 417.13 ng/ml



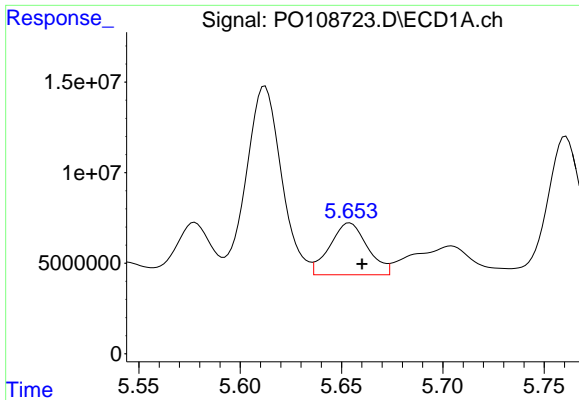
#24 AR-1248-4

R.T.: 5.612 min
 Delta R.T.: -0.006 min
 Response: 125001725
 Conc: 262.32 ng/ml



#24 AR-1248-4

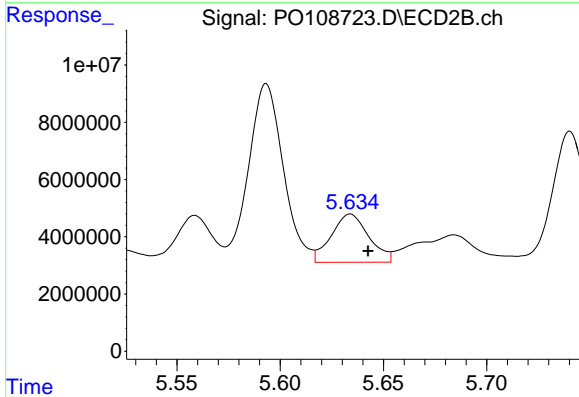
R.T.: 5.241 min
 Delta R.T.: -0.008 min
 Response: 74430857
 Conc: 407.73 ng/ml



#25 AR-1248-5

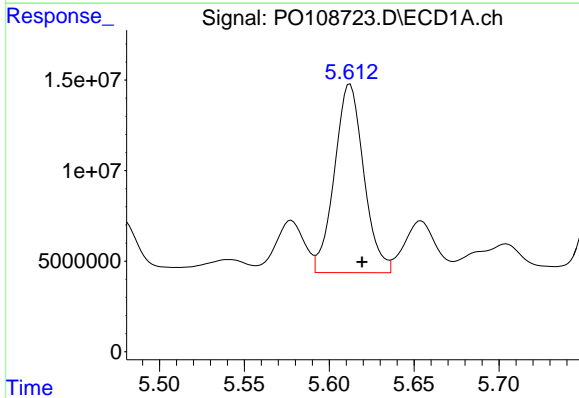
R.T.: 5.654 min
 Delta R.T.: -0.006 min
 Response: 37119232
 Conc: 109.62 ng/ml

Instrument :
 ECD_O
 ClientSampleId :
 AR1660CCC500



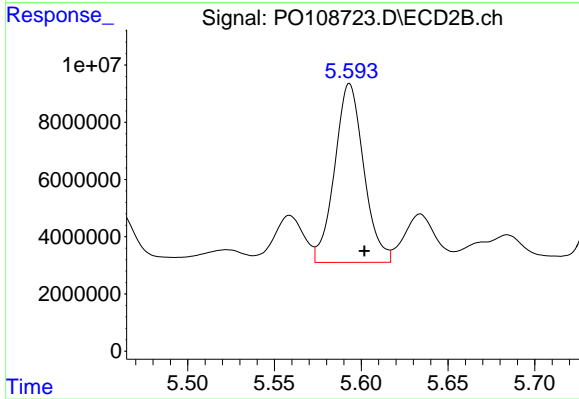
#25 AR-1248-5

R.T.: 5.634 min
 Delta R.T.: -0.009 min
 Response: 21383759
 Conc: 121.77 ng/ml



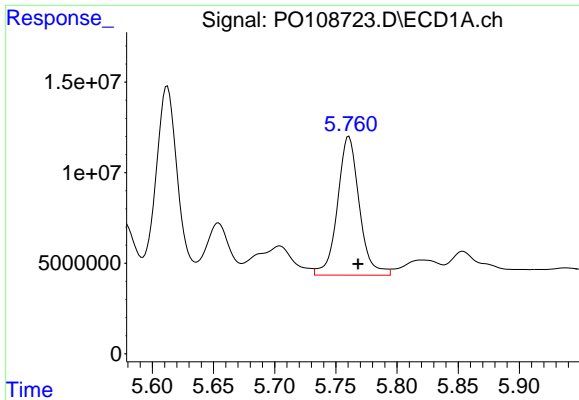
#26 AR-1254-1

R.T.: 5.612 min
 Delta R.T.: -0.007 min
 Response: 125001725
 Conc: 243.36 ng/ml



#26 AR-1254-1

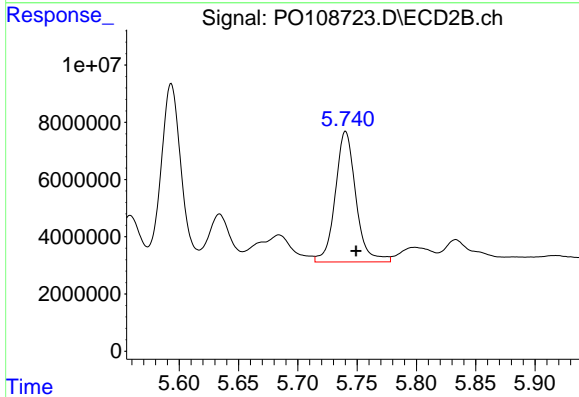
R.T.: 5.593 min
 Delta R.T.: -0.009 min
 Response: 72952733
 Conc: 269.37 ng/ml



#27 AR-1254-2

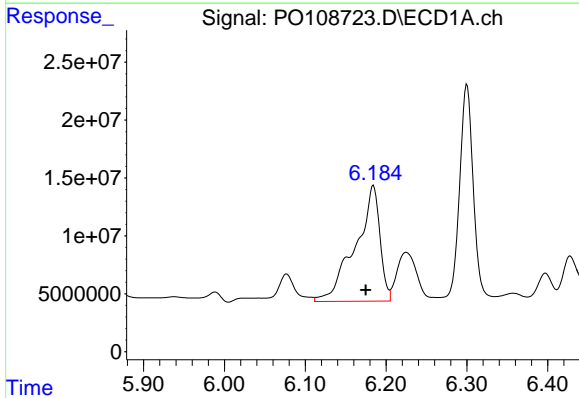
R.T.: 5.761 min
 Delta R.T.: -0.007 min
 Response: 95014152
 Conc: 208.61 ng/ml

Instrument :
 ECD_O
 ClientSampleId :
 AR1660CCC500



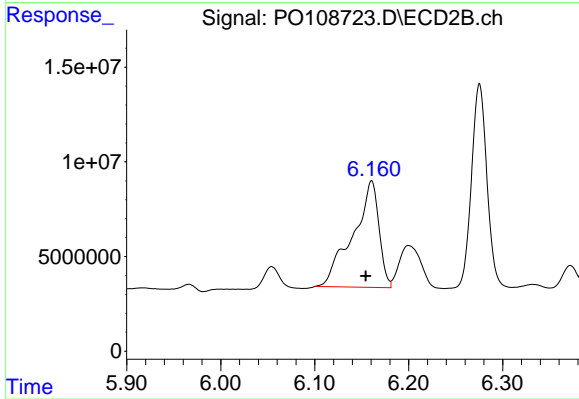
#27 AR-1254-2

R.T.: 5.740 min
 Delta R.T.: -0.009 min
 Response: 55261099
 Conc: 230.24 ng/ml



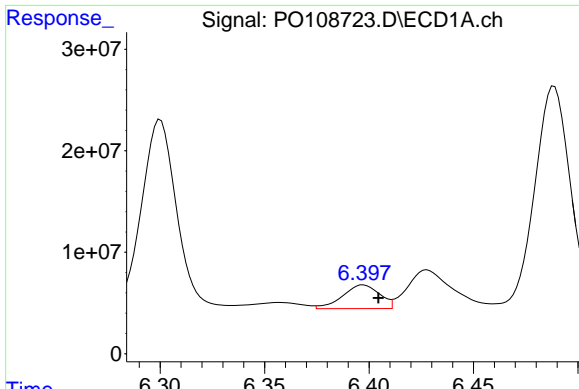
#28 AR-1254-3

R.T.: 6.184 min
 Delta R.T.: 0.009 min
 Response: 210468426
 Conc: 292.27 ng/ml



#28 AR-1254-3

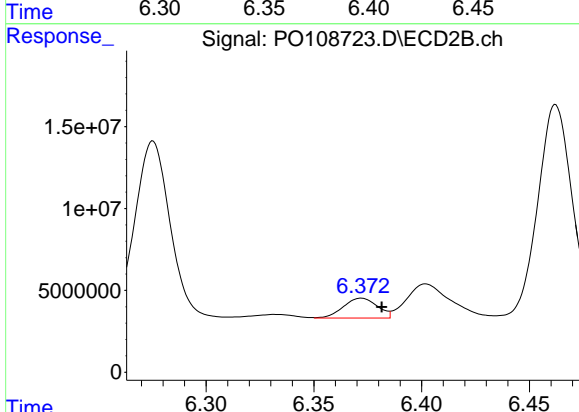
R.T.: 6.161 min
 Delta R.T.: 0.006 min
 Response: 108280179
 Conc: 288.35 ng/ml



#29 AR-1254-4

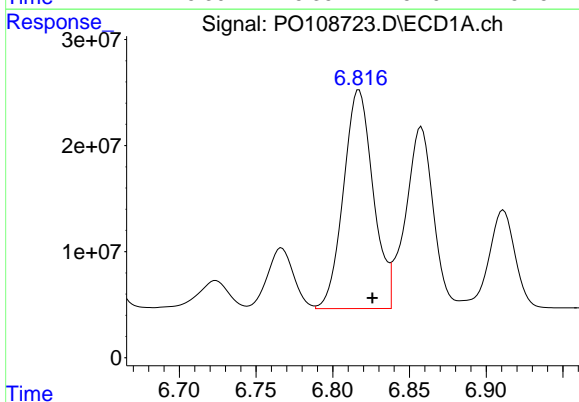
R.T.: 6.397 min
 Delta R.T.: -0.007 min
 Response: 28614689
 Conc: 65.21 ng/ml

Instrument :
 ECD_O
 ClientSampleId :
 AR1660CCC500



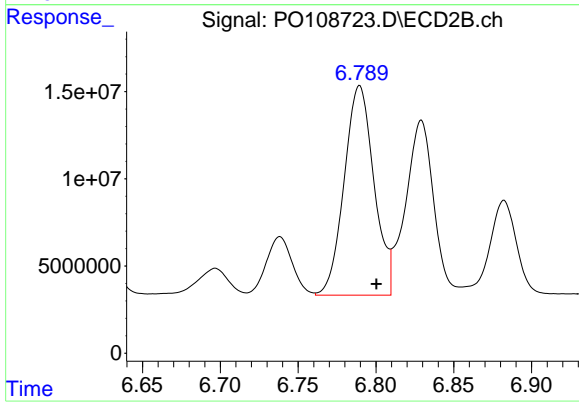
#29 AR-1254-4

R.T.: 6.372 min
 Delta R.T.: -0.009 min
 Response: 13344257
 Conc: 61.30 ng/ml



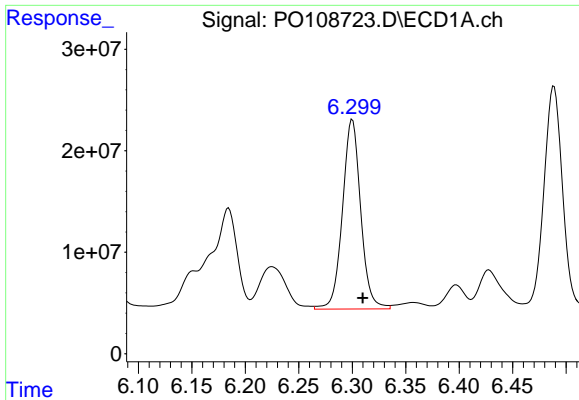
#30 AR-1254-5

R.T.: 6.817 min
 Delta R.T.: -0.009 min
 Response: 278983845
 Conc: 439.26 ng/ml



#30 AR-1254-5

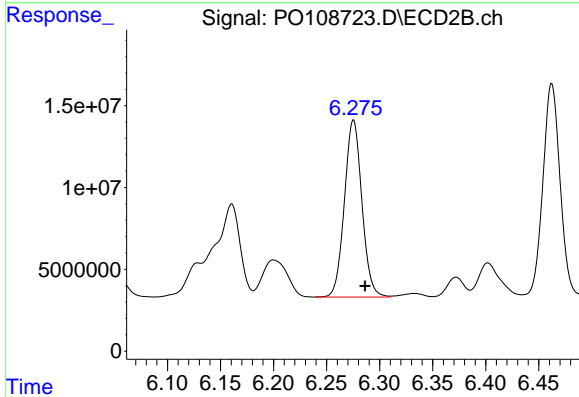
R.T.: 6.790 min
 Delta R.T.: -0.011 min
 Response: 160053894
 Conc: 495.89 ng/ml



#31 AR-1260-1

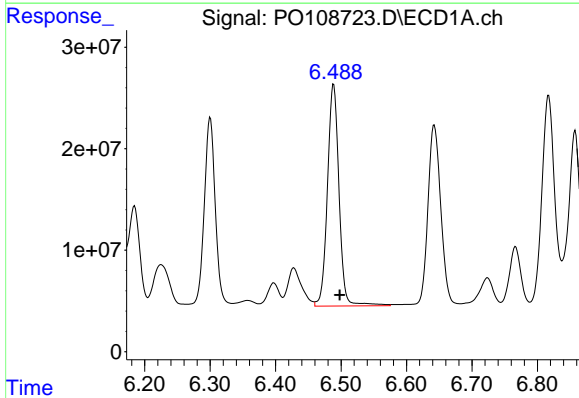
R.T.: 6.300 min
 Delta R.T.: -0.010 min
 Response: 221874551
 Conc: 485.35 ng/ml

Instrument :
 ECD_O
 ClientSampleId :
 AR1660CCC500



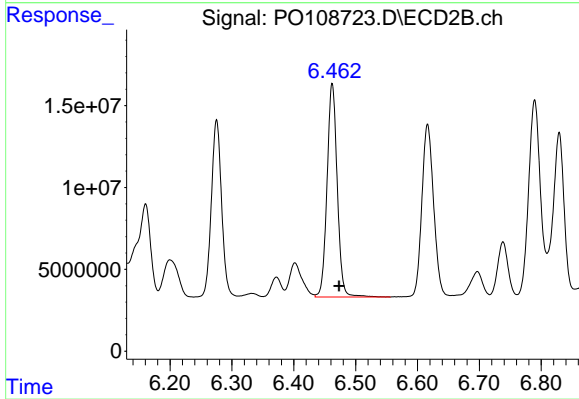
#31 AR-1260-1

R.T.: 6.275 min
 Delta R.T.: -0.011 min
 Response: 124247976
 Conc: 530.89 ng/ml



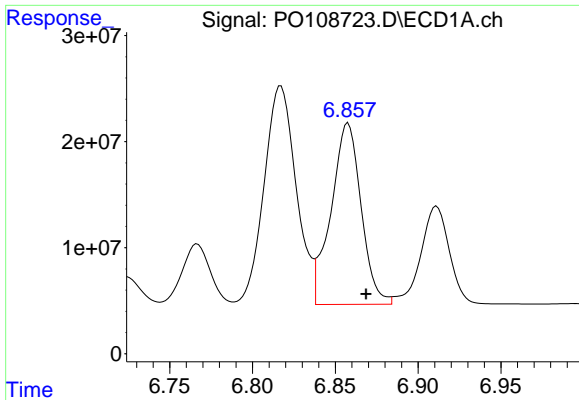
#32 AR-1260-2

R.T.: 6.489 min
 Delta R.T.: -0.009 min
 Response: 269934112
 Conc: 485.74 ng/ml



#32 AR-1260-2

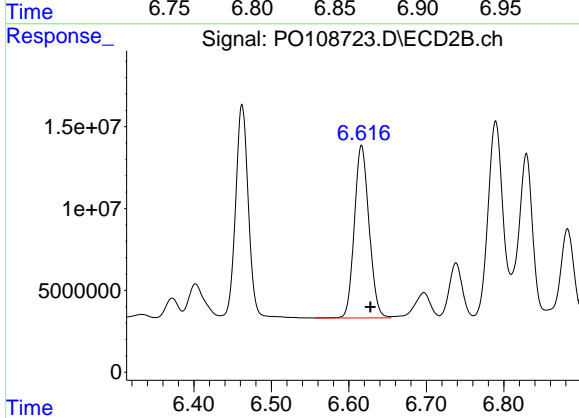
R.T.: 6.462 min
 Delta R.T.: -0.011 min
 Response: 149299155
 Conc: 532.13 ng/ml



#33 AR-1260-3

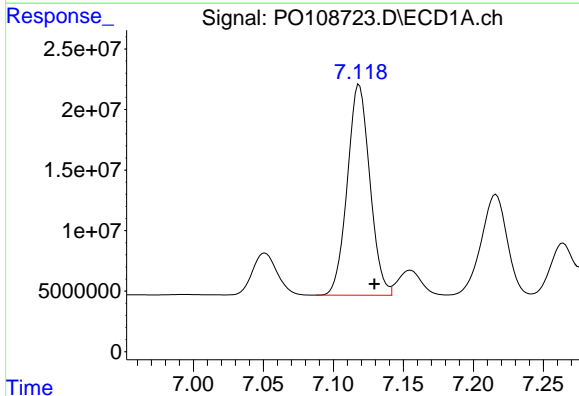
R.T.: 6.858 min
 Delta R.T.: -0.011 min
 Response: 216414166
 Conc: 466.73 ng/ml

Instrument :
 ECD_O
 ClientSampleId :
 AR1660CCC500



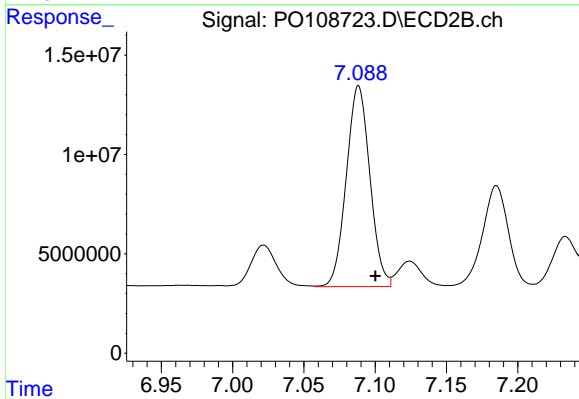
#33 AR-1260-3

R.T.: 6.616 min
 Delta R.T.: -0.011 min
 Response: 138975380
 Conc: 527.28 ng/ml



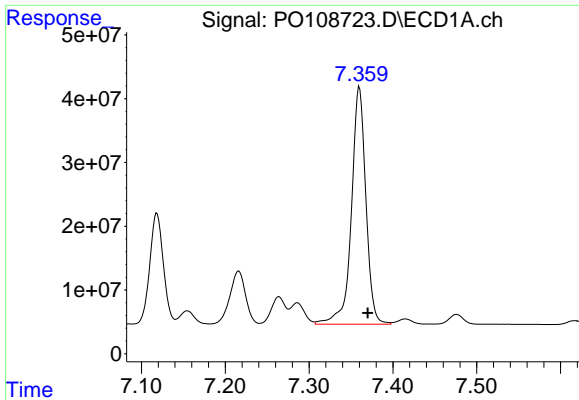
#34 AR-1260-4

R.T.: 7.119 min
 Delta R.T.: -0.011 min
 Response: 195088177
 Conc: 458.66 ng/ml



#34 AR-1260-4

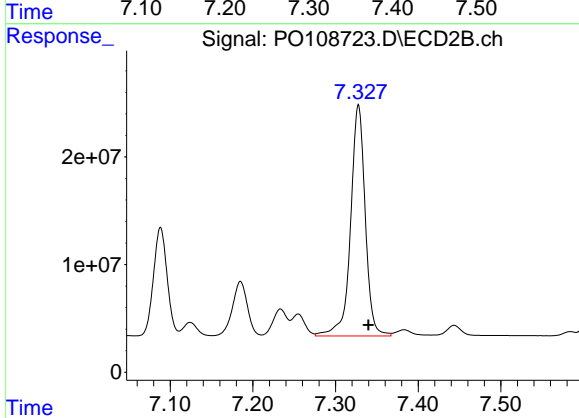
R.T.: 7.088 min
 Delta R.T.: -0.012 min
 Response: 116360789
 Conc: 546.94 ng/ml



#35 AR-1260-5

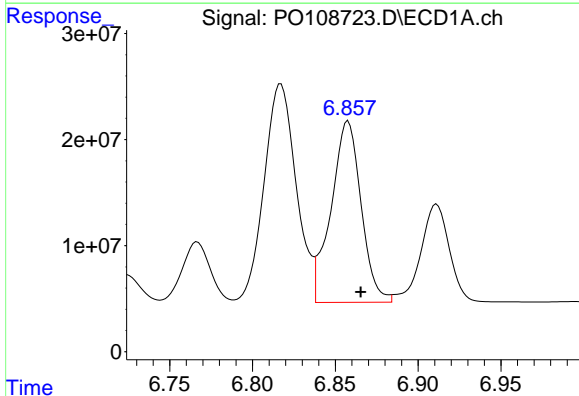
R.T.: 7.360 min
 Delta R.T.: -0.010 min
 Response: 446482901
 Conc: 459.40 ng/ml

Instrument :
 ECD_O
 ClientSampleId :
 AR1660CCC500



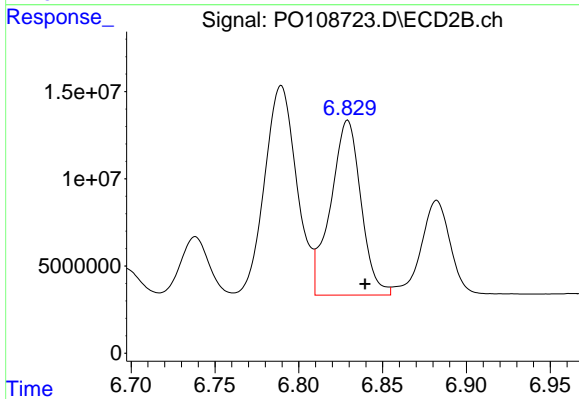
#35 AR-1260-5

R.T.: 7.328 min
 Delta R.T.: -0.012 min
 Response: 264958586
 Conc: 547.51 ng/ml



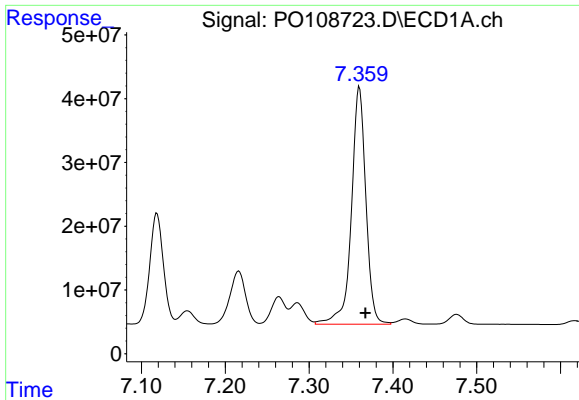
#36 AR-1262-1

R.T.: 6.858 min
 Delta R.T.: -0.008 min
 Response: 216414166
 Conc: 328.70 ng/ml



#36 AR-1262-1

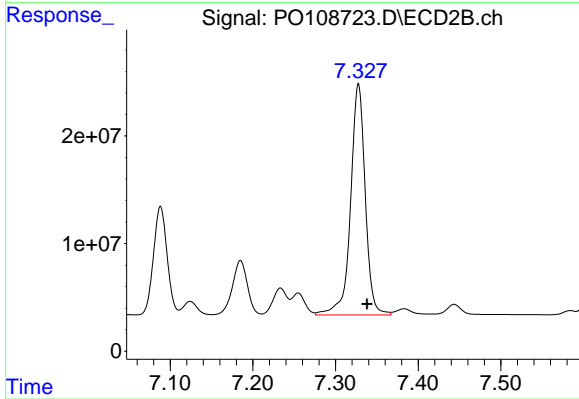
R.T.: 6.829 min
 Delta R.T.: -0.010 min
 Response: 126340670
 Conc: 373.82 ng/ml



#37 AR-1262-2

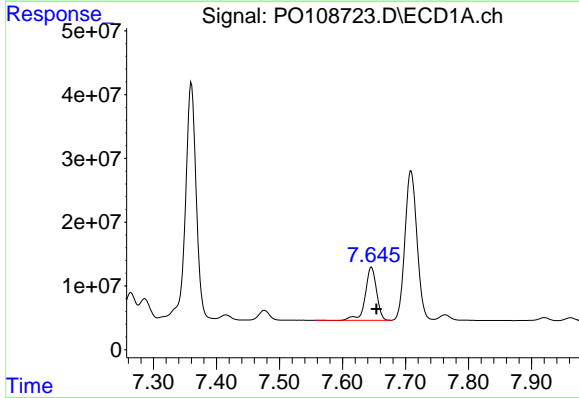
R.T.: 7.360 min
 Delta R.T.: -0.007 min
 Response: 446482901
 Conc: 401.62 ng/ml

Instrument :
 ECD_O
 ClientSampleId :
 AR1660CCC500



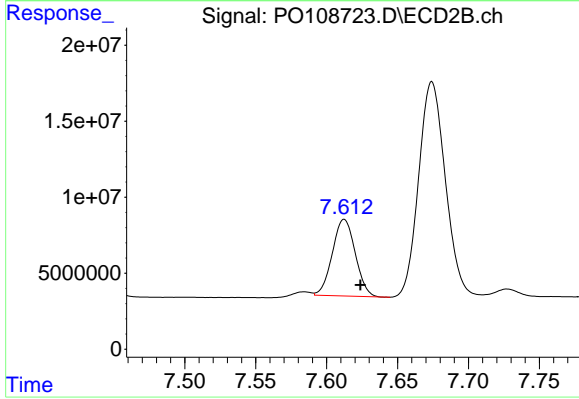
#37 AR-1262-2

R.T.: 7.328 min
 Delta R.T.: -0.010 min
 Response: 264958586
 Conc: 463.33 ng/ml



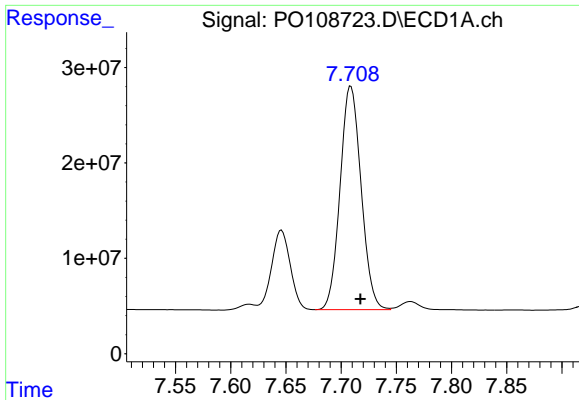
#38 AR-1262-3

R.T.: 7.646 min
 Delta R.T.: -0.008 min
 Response: 103333244
 Conc: 236.54 ng/ml



#38 AR-1262-3

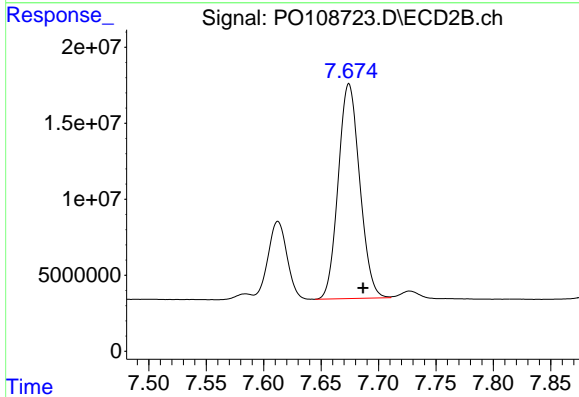
R.T.: 7.612 min
 Delta R.T.: -0.011 min
 Response: 56769732
 Conc: 252.95 ng/ml



#39 AR-1262-4

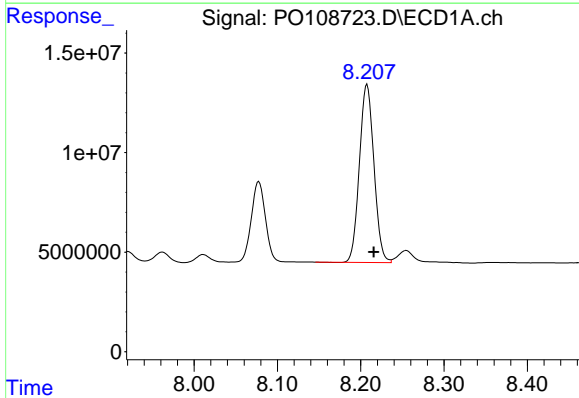
R.T.: 7.709 min
 Delta R.T.: -0.008 min
 Response: 310386402
 Conc: 384.95 ng/ml

Instrument :
 ECD_O
 ClientSampleId :
 AR1660CCC500



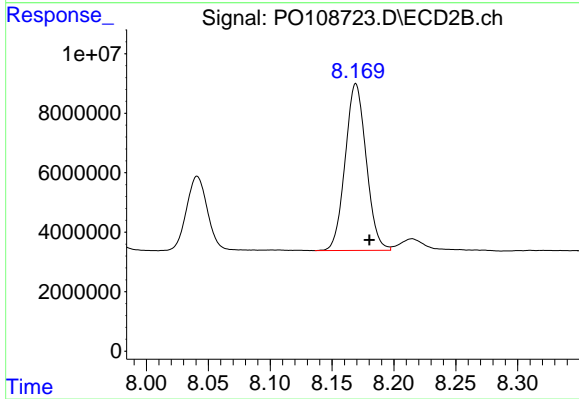
#39 AR-1262-4

R.T.: 7.674 min
 Delta R.T.: -0.012 min
 Response: 184431695
 Conc: 450.29 ng/ml



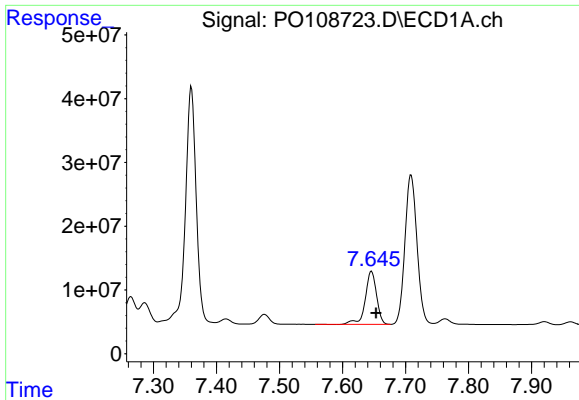
#40 AR-1262-5

R.T.: 8.208 min
 Delta R.T.: -0.008 min
 Response: 108488017
 Conc: 305.66 ng/ml



#40 AR-1262-5

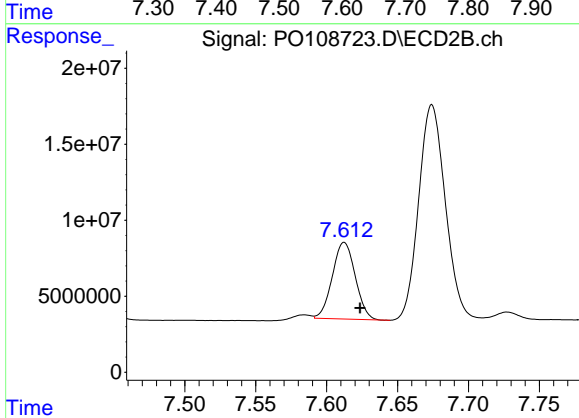
R.T.: 8.169 min
 Delta R.T.: -0.011 min
 Response: 66316398
 Conc: 358.80 ng/ml



#41 AR-1268-1

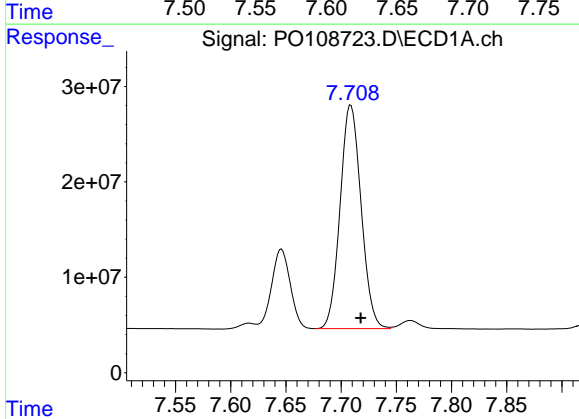
R.T.: 7.646 min
 Delta R.T.: -0.007 min
 Response: 103333244
 Conc: 83.06 ng/ml

Instrument :
 ECD_O
 ClientSampleId :
 AR1660CCC500



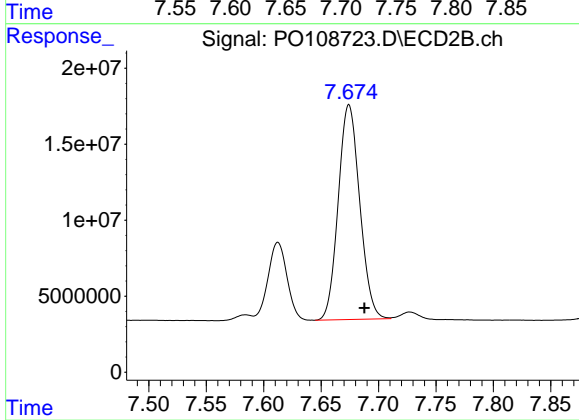
#41 AR-1268-1

R.T.: 7.612 min
 Delta R.T.: -0.011 min
 Response: 56769732
 Conc: 87.89 ng/ml



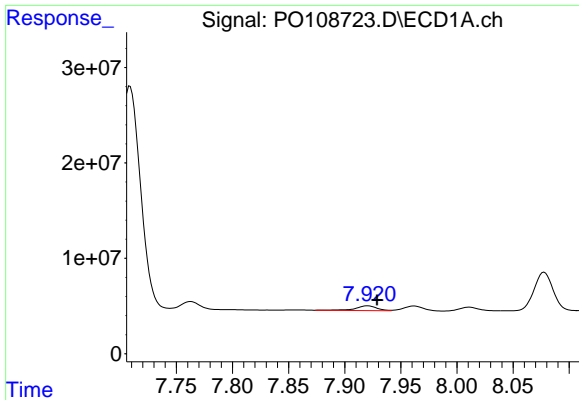
#42 AR-1268-2

R.T.: 7.709 min
 Delta R.T.: -0.009 min
 Response: 310386402
 Conc: 276.72 ng/ml



#42 AR-1268-2

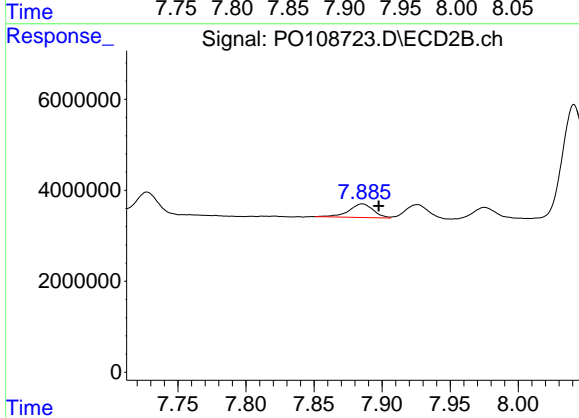
R.T.: 7.674 min
 Delta R.T.: -0.013 min
 Response: 184431695
 Conc: 317.15 ng/ml



#43 AR-1268-3

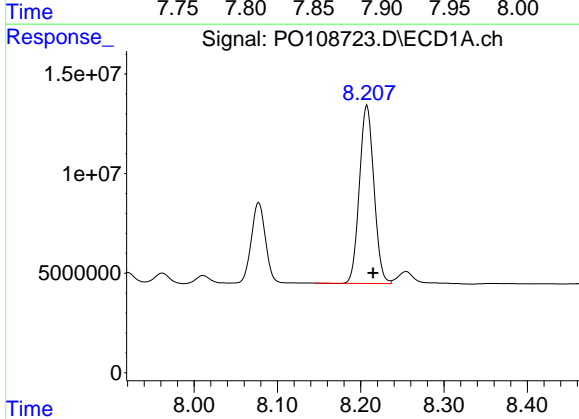
R.T.: 7.920 min
 Delta R.T.: -0.008 min
 Response: 6783087
 Conc: 7.49 ng/ml

Instrument :
 ECD_O
 ClientSampleId :
 AR1660CCC500



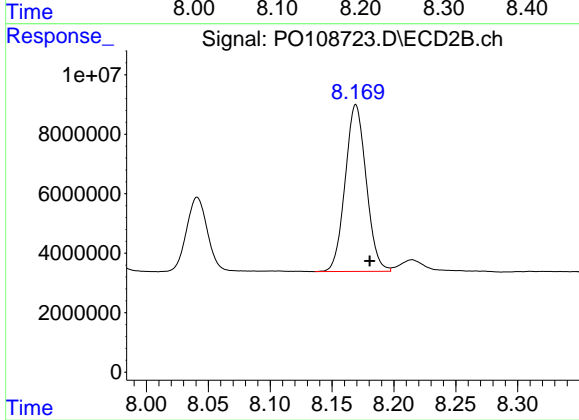
#43 AR-1268-3

R.T.: 7.886 min
 Delta R.T.: -0.012 min
 Response: 3712481
 Conc: 7.44 ng/ml



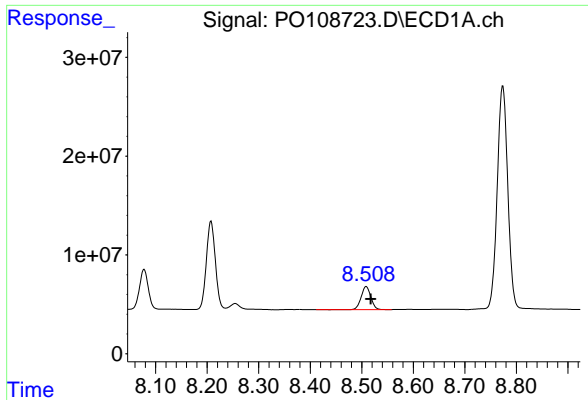
#44 AR-1268-4

R.T.: 8.208 min
 Delta R.T.: -0.007 min
 Response: 108488017
 Conc: 280.40 ng/ml



#44 AR-1268-4

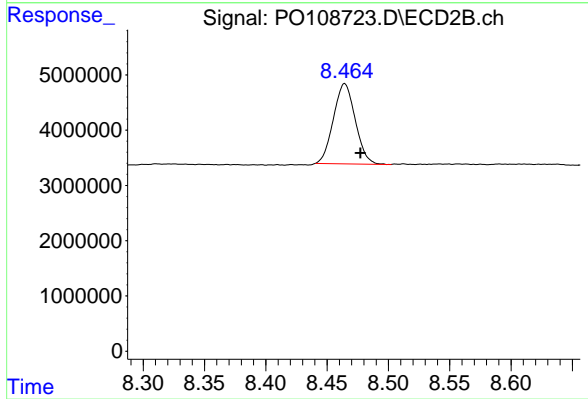
R.T.: 8.169 min
 Delta R.T.: -0.011 min
 Response: 66316398
 Conc: 326.62 ng/ml



#45 AR-1268-5

R.T.: 8.509 min
 Delta R.T.: -0.009 min
 Response: 30525572
 Conc: 11.01 ng/ml

Instrument :
 ECD_O
 ClientSampleId :
 AR1660CCC500



#45 AR-1268-5

R.T.: 8.464 min
 Delta R.T.: -0.013 min
 Response: 18013984
 Conc: 12.13 ng/ml