

Data Path : Z:\pestpcbsrv\HPCHEM1\ECD_0\Data\PO122118\
 Data File : PO052877.D
 Signal(s) : Signal #1: ECD1A.CH Signal #2: ECD2B.CH
 Acq On : 22 Dec 2018 17:01
 Operator : SM/SJ
 Sample : AR1254ICC500
 Misc :
 ALS Vial : 12 Sample Multiplier: 1

Instrument :
 ECD_0
 ClientSampleId :
 AR1254ICC500

Integration File signal 1: autoint1.e
 Integration File signal 2: autoint2.e
 Quant Time: Dec 24 02:27:27 2018
 Quant Method : Z:\pestpcbsrv\HPCHEM1\ECD_0\methods\PO122118.M
 Quant Title : GC EXTRACTABLES
 QLast Update : Mon Dec 24 02:27:13 2018
 Response via : Initial Calibration
 Integrator: ChemStation 6890 Scale Mode: Small noise peaks clipped

Volume Inj. : 2 µl
 Signal #1 Phase : ZB-MR1 Signal #2 Phase: ZB-MR2
 Signal #1 Info : 30Mx0.32mmx 0.50µ Signal #2 Info : 30M x 0.32mm x 0.25µm

Compound	RT#1	RT#2	Resp#1	Resp#2	ng/ml	ng/ml

System Monitoring Compounds						
1) SA Tetrachlo...	4.241	3.268	63998960	13674707	46.680	46.569
2) SA Decachlor...	9.782	7.946	33675183	13619083	48.466	48.379
Target Compounds						
26) L6 AR-1254-1	6.237	5.007	19203193	8550652	500.000	500.000
27) L6 AR-1254-2	6.453	5.147	28411897	7372509	500.000	500.000
28) L6 AR-1254-3	6.818	5.525	29856966	11474850	500.000	500.000
29) L6 AR-1254-4	7.102	5.746	20360993	6494690	500.000	500.000
30) L6 AR-1254-5	7.517	6.141	20762024	10141859	500.000	500.000

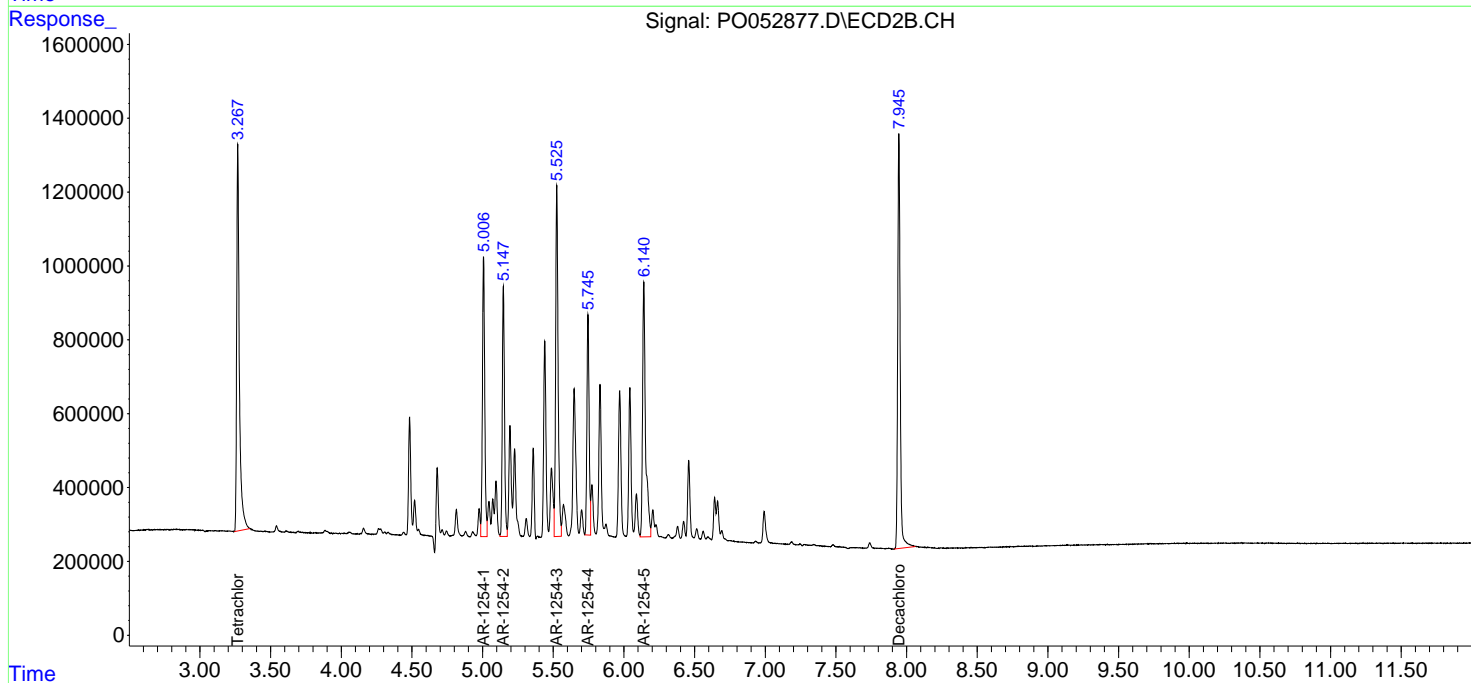
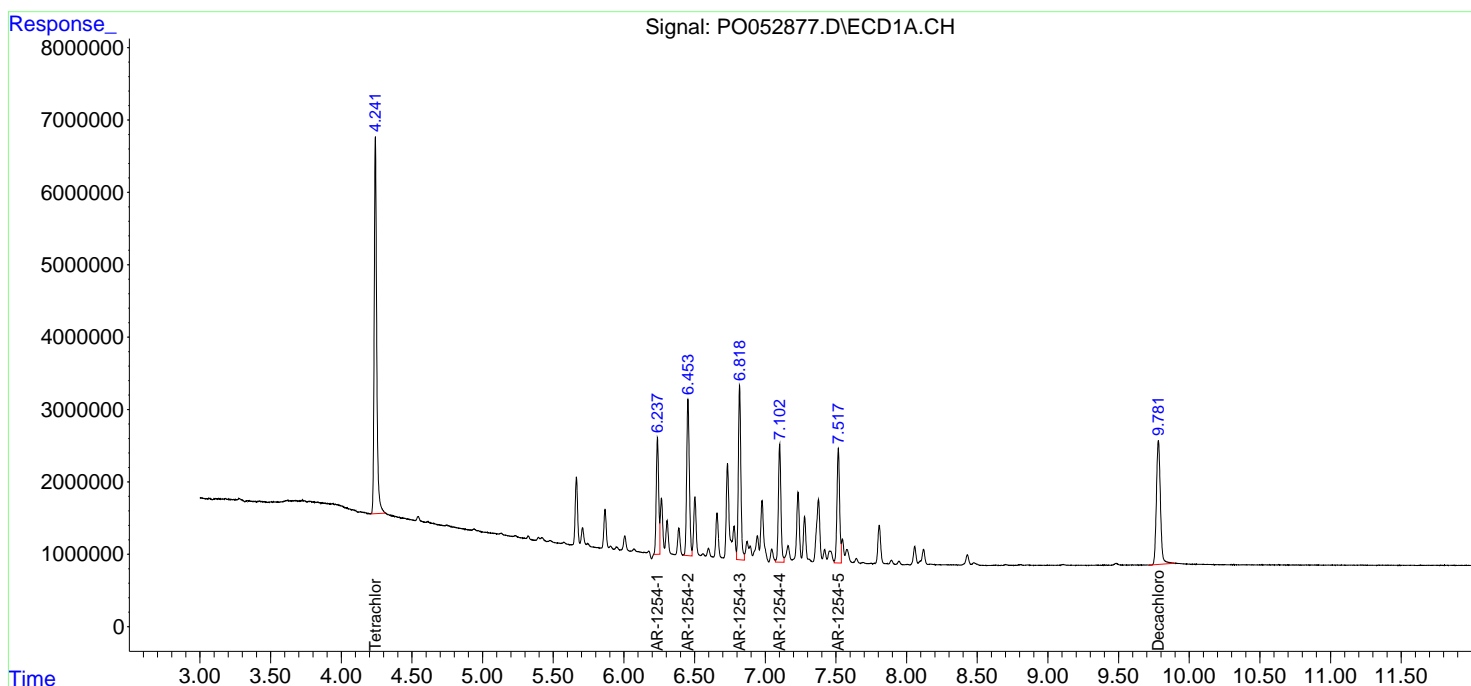
(f)=RT Delta > 1/2 Window (#)=Amounts differ by > 25% (m)=manual int.

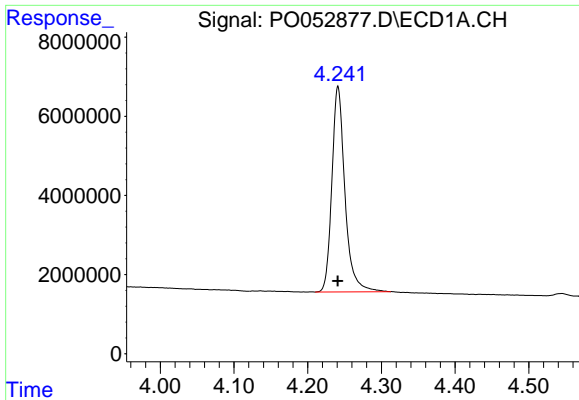
Data Path : Z:\pestpcbsrv\HPCHEM1\ECD_0\Data\PO122118\
 Data File : PO052877.D
 Signal(s) : Signal #1: ECD1A.CH Signal #2: ECD2B.CH
 Acq On : 22 Dec 2018 17:01
 Operator : SM/SJ
 Sample : AR1254ICC500
 Misc :
 ALS Vial : 12 Sample Multiplier: 1

Instrument :
 ECD_O
 ClientSampleId :
 AR1254ICC500

Integration File signal 1: autoint1.e
 Integration File signal 2: autoint2.e
 Quant Time: Dec 24 02:27:27 2018
 Quant Method : Z:\pestpcbsrv\HPCHEM1\ECD_0\methods\PO122118.M
 Quant Title : GC EXTRACTABLES
 QLast Update : Mon Dec 24 02:27:13 2018
 Response via : Initial Calibration
 Integrator: ChemStation 6890 Scale Mode: Small noise peaks clipped

Volume Inj. : 2 µl
 Signal #1 Phase : ZB-MR1 Signal #2 Phase: ZB-MR2
 Signal #1 Info : 30Mx0.32mmx 0.50µm Signal #2 Info : 30M x 0.32mm x 0.25µm

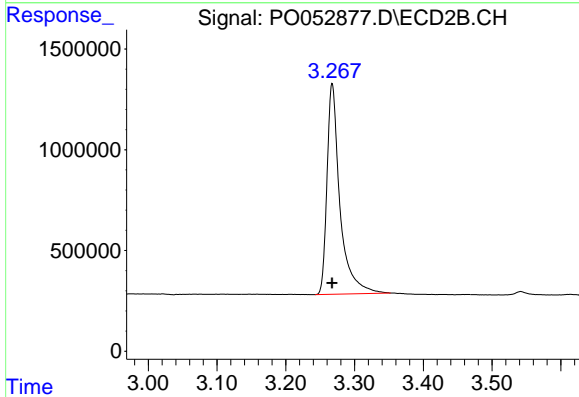




#1 Tetrachloro-m-xylene

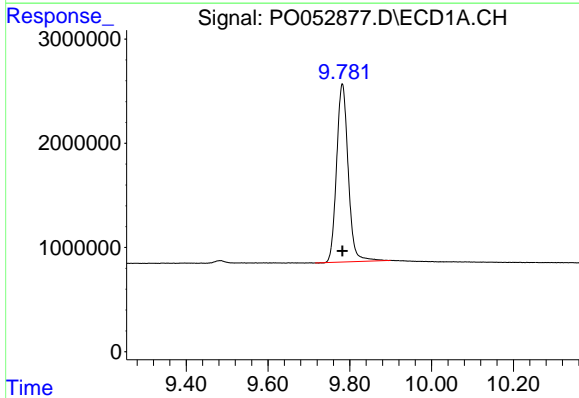
R.T.: 4.241 min
 Delta R.T.: 0.000 min
 Response: 63998960
 Conc: 46.68 ng/ml

Instrument :
 ECD_O
 ClientSampleId :
 AR1254ICC500



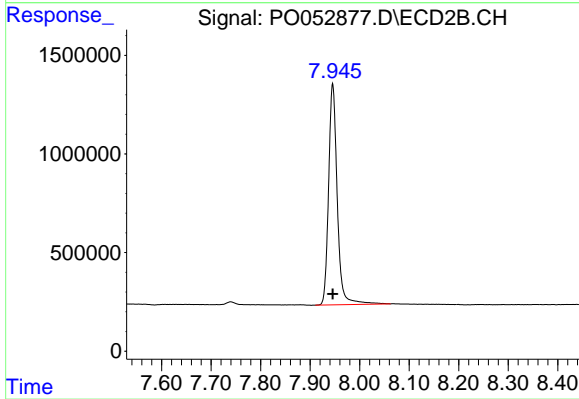
#1 Tetrachloro-m-xylene

R.T.: 3.268 min
 Delta R.T.: 0.000 min
 Response: 13674707
 Conc: 46.57 ng/ml



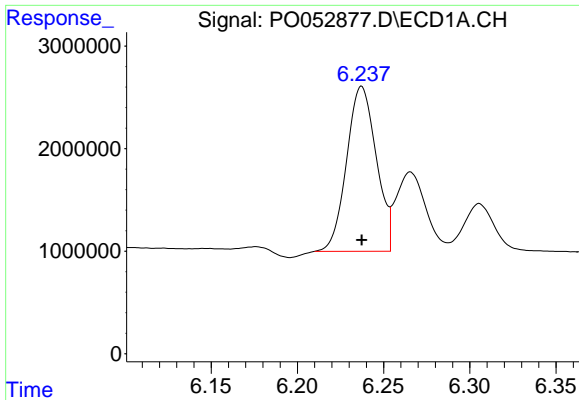
#2 Decachlorobiphenyl

R.T.: 9.782 min
 Delta R.T.: 0.000 min
 Response: 33675183
 Conc: 48.47 ng/ml



#2 Decachlorobiphenyl

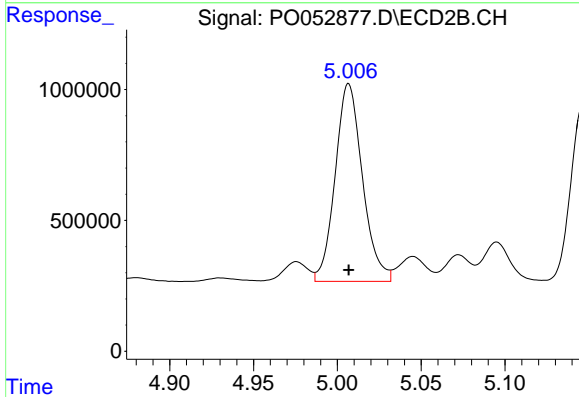
R.T.: 7.946 min
 Delta R.T.: 0.000 min
 Response: 13619083
 Conc: 48.38 ng/ml



#26 AR-1254-1

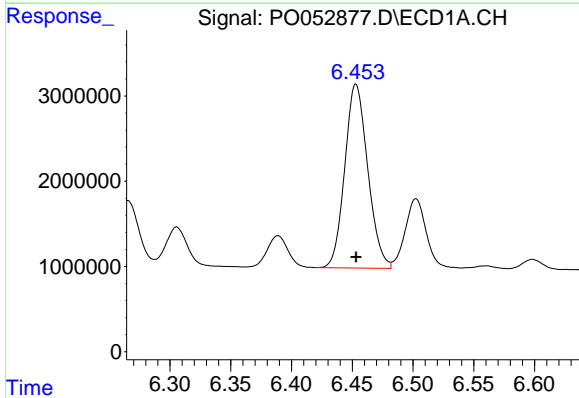
R.T.: 6.237 min
 Delta R.T.: 0.000 min
 Response: 19203193
 Conc: 500.00 ng/ml

Instrument :
 ECD_O
 ClientSampleId :
 AR1254ICC500



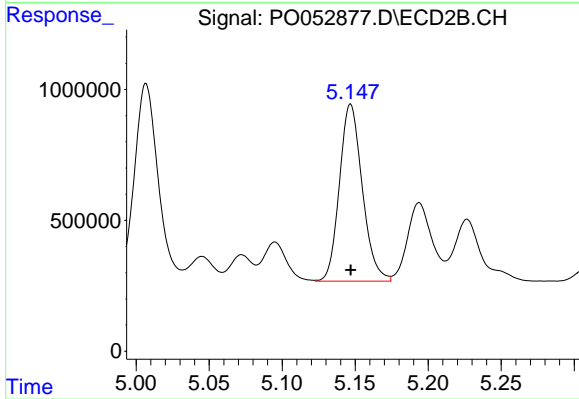
#26 AR-1254-1

R.T.: 5.007 min
 Delta R.T.: 0.000 min
 Response: 8550652
 Conc: 500.00 ng/ml



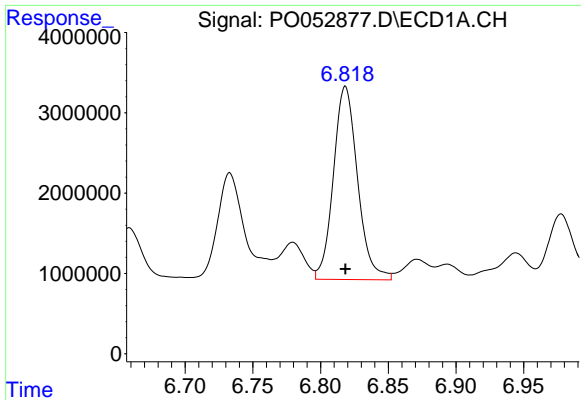
#27 AR-1254-2

R.T.: 6.453 min
 Delta R.T.: 0.000 min
 Response: 28411897
 Conc: 500.00 ng/ml



#27 AR-1254-2

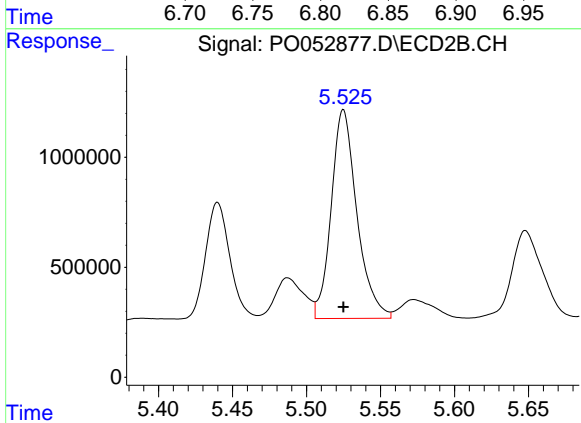
R.T.: 5.147 min
 Delta R.T.: 0.000 min
 Response: 7372509
 Conc: 500.00 ng/ml



#28 AR-1254-3

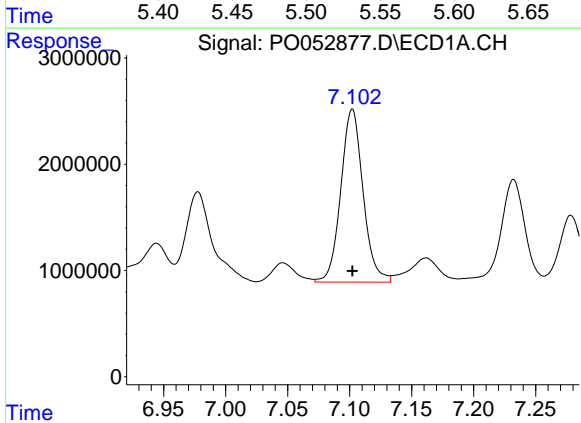
R.T.: 6.818 min
 Delta R.T.: 0.000 min
 Response: 29856966
 Conc: 500.00 ng/ml

Instrument :
 ECD_O
 ClientSampled :
 AR1254ICC500



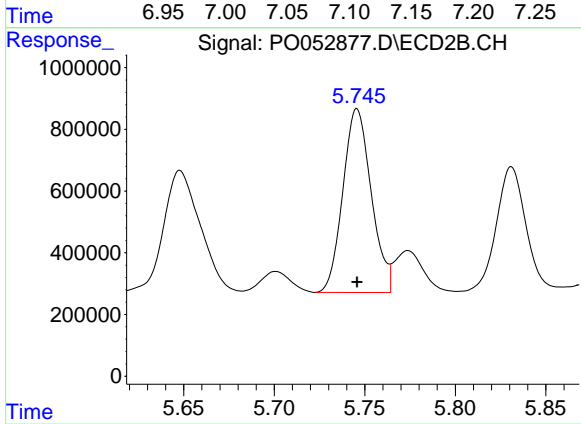
#28 AR-1254-3

R.T.: 5.525 min
 Delta R.T.: 0.000 min
 Response: 11474850
 Conc: 500.00 ng/ml



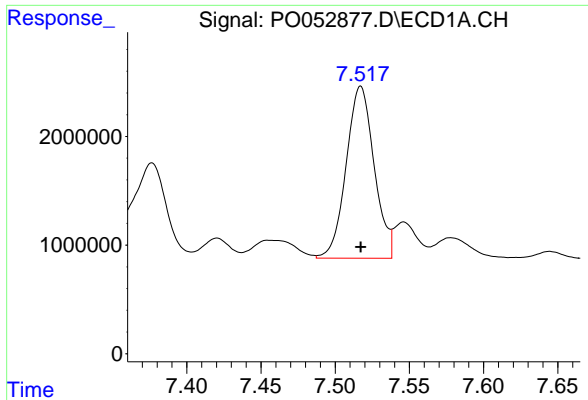
#29 AR-1254-4

R.T.: 7.102 min
 Delta R.T.: 0.000 min
 Response: 20360993
 Conc: 500.00 ng/ml



#29 AR-1254-4

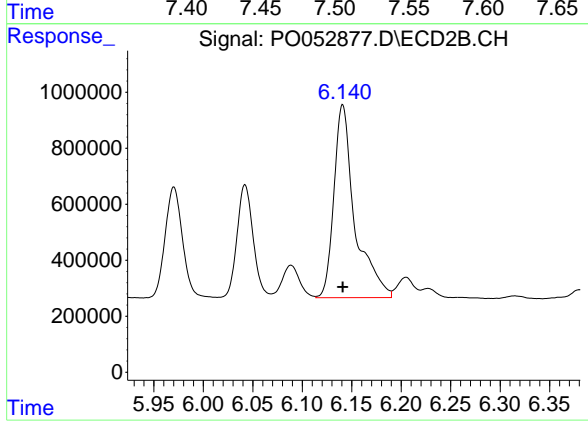
R.T.: 5.746 min
 Delta R.T.: 0.000 min
 Response: 6494690
 Conc: 500.00 ng/ml



#30 AR-1254-5

R.T.: 7.517 min
Delta R.T.: 0.000 min
Response: 20762024
Conc: 500.00 ng/ml

Instrument :
ECD_O
ClientSampleId :
AR1254ICC500



#30 AR-1254-5

R.T.: 6.141 min
Delta R.T.: 0.000 min
Response: 10141859
Conc: 500.00 ng/ml