

Data Path : Z:\pestpcbsrv\HPCHEM1\ECD_0\Data\PO122120\
 Data File : PO073977.D
 Signal(s) : Signal #1: ECD1A.CH Signal #2: ECD2B.CH
 Acq On : 21 Dec 2020 16:22
 Operator : DD\AJ
 Sample : I.BLK
 Misc :
 ALS Vial : 2 Sample Multiplier: 1

Instrument :
 ECD_0
 ClientSampleId :

Integration File signal 1: autoint1.e
 Integration File signal 2: autoint2.e
 Quant Time: Dec 21 17:11:22 2020
 Quant Method : Z:\pestpcbsrv\HPCHEM1\ECD_0\methods\PO121020.M
 Quant Title : GC EXTRACTABLES
 QLast Update : Fri Dec 11 03:58:06 2020
 Response via : Initial Calibration
 Integrator: ChemStation 6890 Scale Mode: Small noise peaks clipped

Volume Inj. : 2 µl
 Signal #1 Phase : ZB-MR1 Signal #2 Phase: ZB-MR2
 Signal #1 Info : 30Mx0.32mmx 0.50µ Signal #2 Info : 30M x 0.32mm x 0.25µm

Compound	RT#1	RT#2	Resp#1	Resp#2	ng/ml	ng/ml

System Monitoring Compounds						
1) SA Tetrachlo...	4.938	3.997	1998432	1187648	21.858	22.142
2) SA Decachlor...	10.964	9.261	1584327	879950	19.171	18.806
Target Compounds						
9) L2 AR-1221-2	5.291	0.000	24715	0	31.464	N.D. #
24) L5 AR-1248-4	7.181f	0.000	21029	0	5.258	N.D. #
26) L6 AR-1254-1	7.181	0.000	21029	0	5.540	N.D. #
28) L6 AR-1254-3	7.808f	0.000	15539	0	2.536	N.D. #

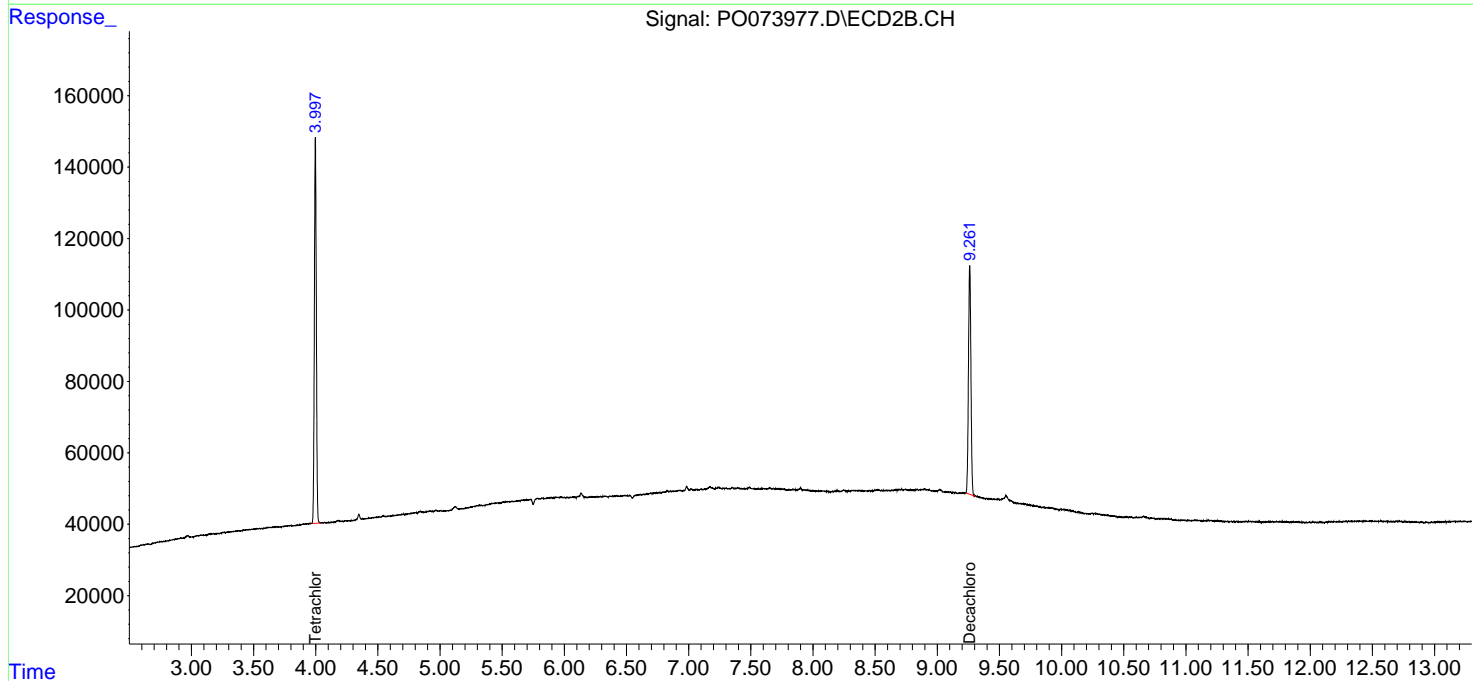
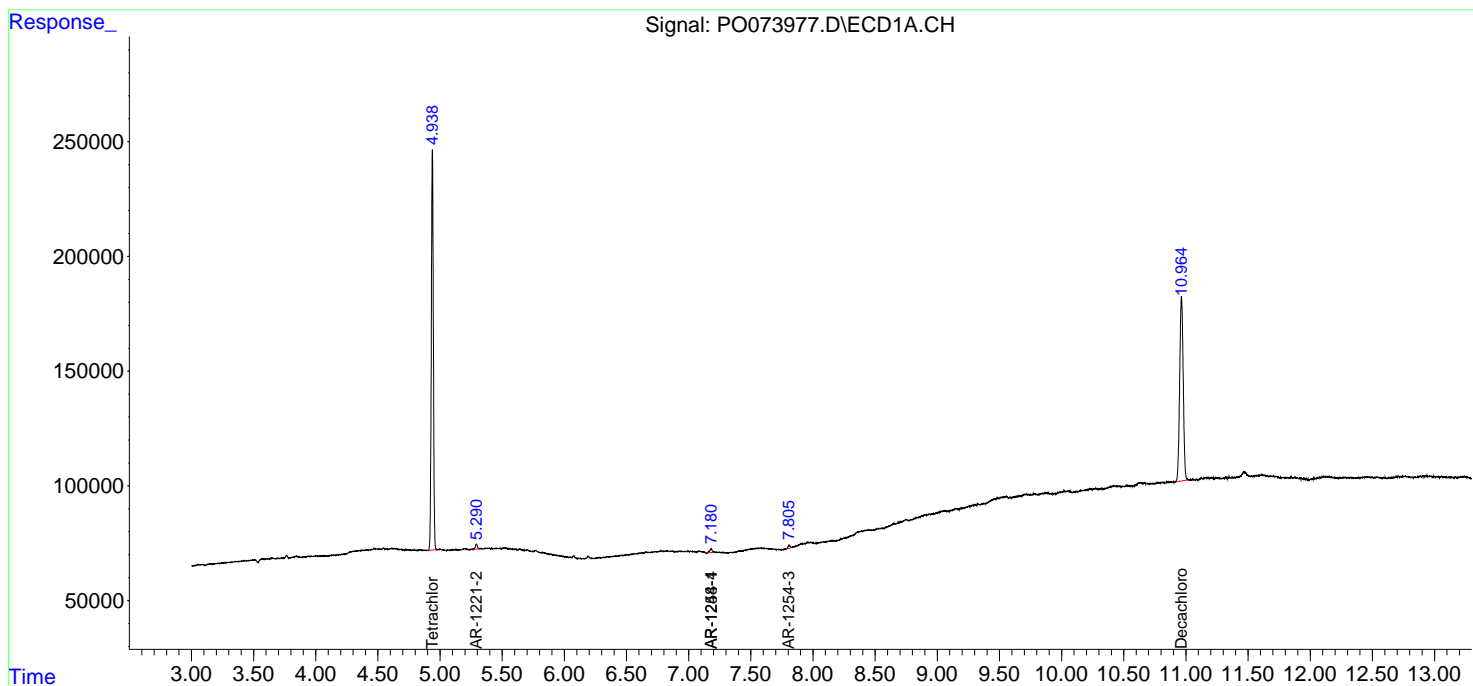
(f)=RT Delta > 1/2 Window (#)=Amounts differ by > 25% (m)=manual int.

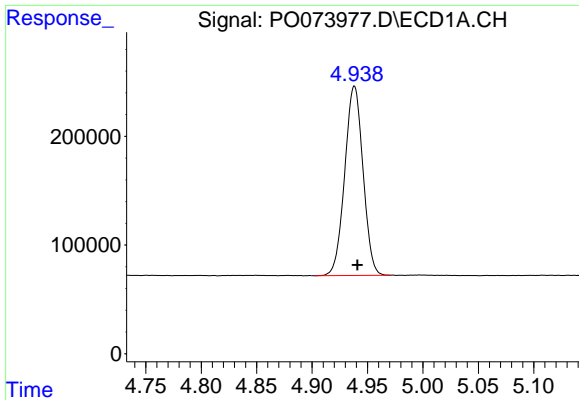
Data Path : Z:\pestpcbsrv\HPCHEM1\ECD_0\Data\PO122120\
 Data File : PO073977.D
 Signal(s) : Signal #1: ECD1A.CH Signal #2: ECD2B.CH
 Acq On : 21 Dec 2020 16:22
 Operator : DD\AJ
 Sample : I.BLK
 Misc :
 ALS Vial : 2 Sample Multiplier: 1

Instrument :
 ECD_O
 ClientSampled :

Integration File signal 1: autoint1.e
 Integration File signal 2: autoint2.e
 Quant Time: Dec 21 17:11:22 2020
 Quant Method : Z:\pestpcbsrv\HPCHEM1\ECD_0\methods\PO121020.M
 Quant Title : GC EXTRACTABLES
 QLast Update : Fri Dec 11 03:58:06 2020
 Response via : Initial Calibration
 Integrator: ChemStation 6890 Scale Mode: Small noise peaks clipped

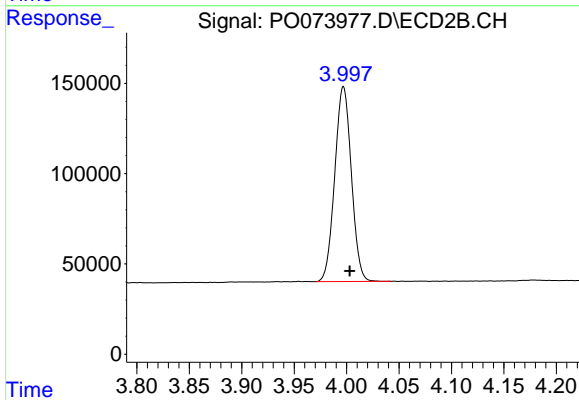
Volume Inj. : 2 µl
 Signal #1 Phase : ZB-MR1 Signal #2 Phase: ZB-MR2
 Signal #1 Info : 30Mx0.32mmx 0.50µ Signal #2 Info : 30M x 0.32mm x 0.25µm



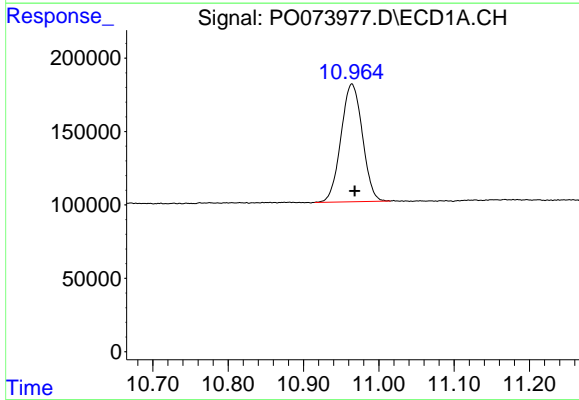


#1 Tetrachloro-m-xylene
 R.T.: 4.938 min
 Delta R.T.: -0.003 min
 Response: 1998432
 Conc: 21.86 ng/ml

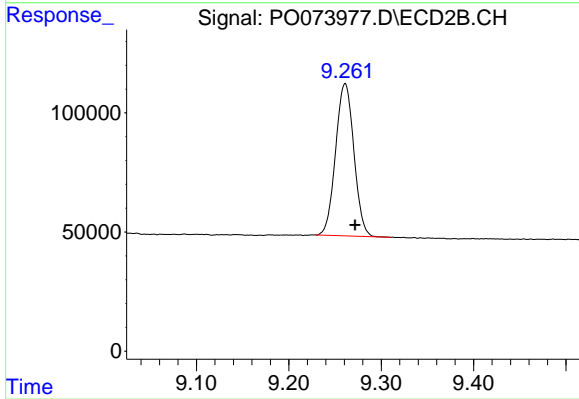
Instrument :
 ECD_O
 ClientSampleId :



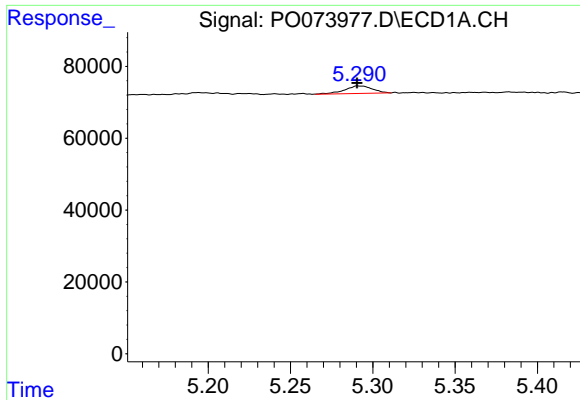
#1 Tetrachloro-m-xylene
 R.T.: 3.997 min
 Delta R.T.: -0.006 min
 Response: 1187648
 Conc: 22.14 ng/ml



#2 Decachlorobiphenyl
 R.T.: 10.964 min
 Delta R.T.: -0.004 min
 Response: 1584327
 Conc: 19.17 ng/ml



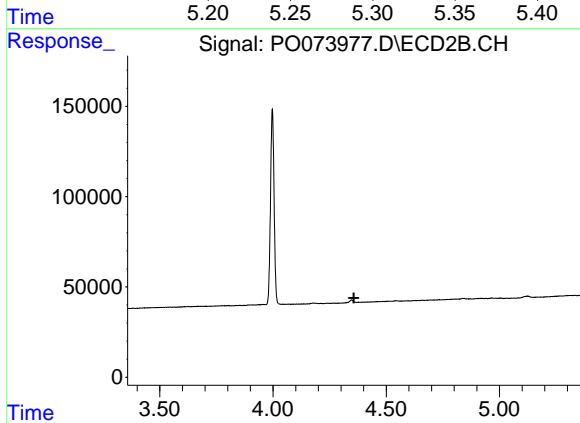
#2 Decachlorobiphenyl
 R.T.: 9.261 min
 Delta R.T.: -0.011 min
 Response: 879950
 Conc: 18.81 ng/ml



#9 AR-1221-2

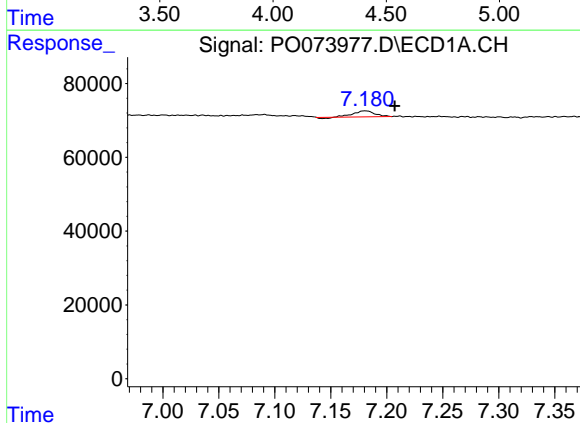
R.T.: 5.291 min
 Delta R.T.: 0.000 min
 Response: 24715
 Conc: 31.46 ng/ml

Instrument :
 ECD_O
 ClientSampleId :



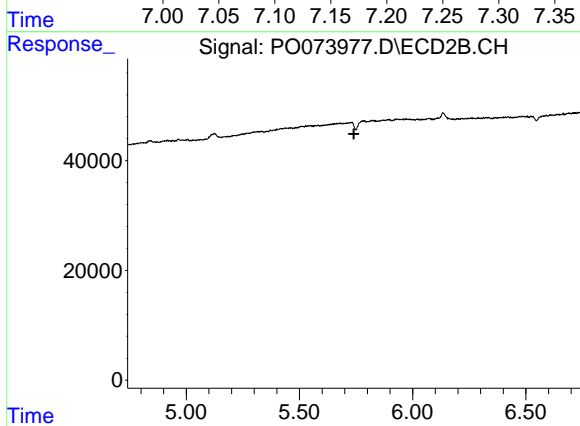
#9 AR-1221-2

R.T.: 0.000 min
 Exp R.T. : 4.357 min
 Response: 0
 Conc: N.D.



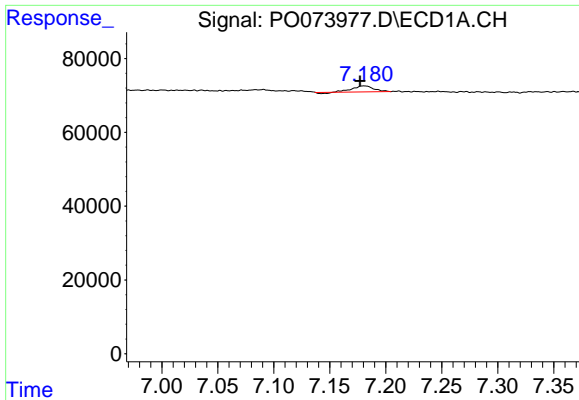
#24 AR-1248-4

R.T.: 7.181 min
 Delta R.T.: -0.027 min
 Response: 21029
 Conc: 5.26 ng/ml



#24 AR-1248-4

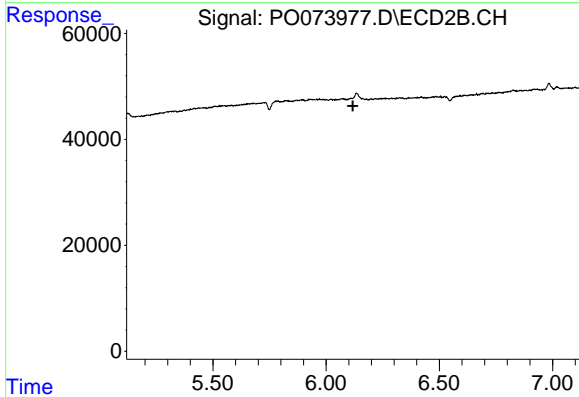
R.T.: 0.000 min
 Exp R.T. : 5.741 min
 Response: 0
 Conc: N.D.



#26 AR-1254-1

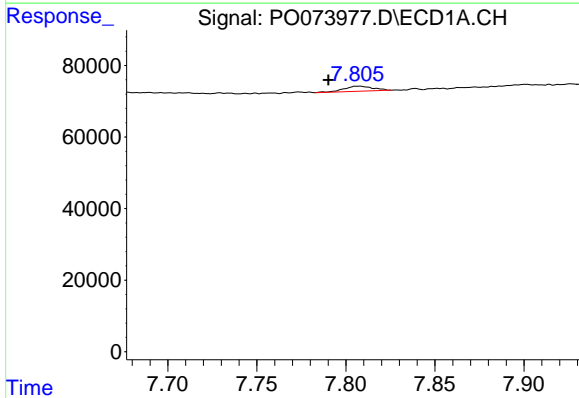
R.T.: 7.181 min
 Delta R.T.: 0.003 min
 Response: 21029
 Conc: 5.54 ng/ml

Instrument :
 ECD_O
 ClientSampleId :



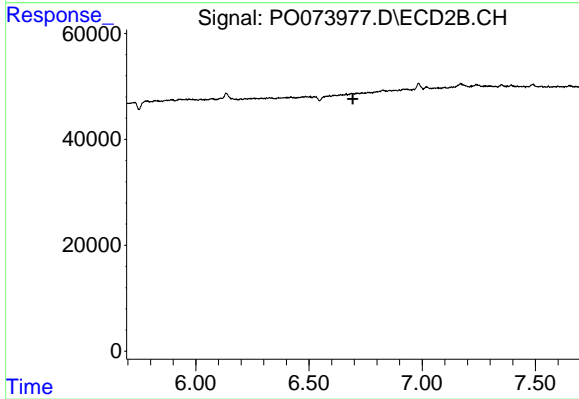
#26 AR-1254-1

R.T.: 0.000 min
 Exp R.T. : 6.118 min
 Response: 0
 Conc: N.D.



#28 AR-1254-3

R.T.: 7.808 min
 Delta R.T.: 0.017 min
 Response: 15539
 Conc: 2.54 ng/ml



#28 AR-1254-3

R.T.: 0.000 min
 Exp R.T. : 6.694 min
 Response: 0
 Conc: N.D.