

Data Path : Z:\pestpcbsrv\HPCHEM1\ECD_0\Data\PO122120\
 Data File : P0073990.D
 Signal(s) : Signal #1: ECD1A.CH Signal #2: ECD2B.CH
 Acq On : 21 Dec 2020 20:04
 Operator : DD\AJ
 Sample : L5163-11
 Misc :
 ALS Vial : 29 Sample Multiplier: 1

Instrument :
 ECD_0
 ClientSampleId :
 DUP-40

Integration File signal 1: autoint1.e
 Integration File signal 2: autoint2.e
 Quant Time: Dec 22 02:20:05 2020
 Quant Method : Z:\pestpcbsrv\HPCHEM1\ECD_0\methods\PO121020.M
 Quant Title : GC EXTRACTABLES
 QLast Update : Fri Dec 11 03:58:06 2020
 Response via : Initial Calibration
 Integrator: ChemStation 6890 Scale Mode: Small noise peaks clipped

Volume Inj. : 2 µl
 Signal #1 Phase : ZB-MR1 Signal #2 Phase: ZB-MR2
 Signal #1 Info : 30Mx0.32mmx 0.50µ Signal #2 Info : 30M x 0.32mm x 0.25µm

Compound	RT#1	RT#2	Resp#1	Resp#2	ng/ml	ng/ml

System Monitoring Compounds						
1) SA Tetrachlo...	4.937	3.996	2278526	1358821	24.922	25.334
2) SA Decachlor...	10.963	9.262	4282720	2355375	51.824	50.339
Target Compounds						
8) L2 AR-1221-1	5.194	0.000	56888	0	53.691	N.D. #
9) L2 AR-1221-2	5.290	0.000	24281	0	30.911	N.D. #
10) L2 AR-1221-3	5.397f	0.000	32069	0	13.183	N.D. #
11) L3 AR-1232-1	5.397f	0.000	32069	0	15.552	N.D. #
15) L3 AR-1232-5	6.556	0.000	26112	0	36.470	N.D. #
20) L4 AR-1242-5	7.246	6.111	20978	85298	9.606	50.040 #
22) L5 AR-1248-2	6.556	0.000	26112	0	9.344	N.D. #
24) L5 AR-1248-4	7.206	0.000	36743	0	9.188	N.D. #
25) L5 AR-1248-5	7.246	0.000	20978	0	5.547	N.D. #
26) L6 AR-1254-1	7.173	6.111	89562	85298	23.595	24.136
27) L6 AR-1254-2	7.404	6.269	351873	173481	59.682	55.567
28) L6 AR-1254-3	7.788	6.686	383006	409318	62.509	83.603 #
29) L6 AR-1254-4	8.084	6.925	547922	341800	104.446	97.461
30) L6 AR-1254-5	8.514	7.351	1346008	1141128	261.334	258.781
31) L7 AR-1260-1	7.955	6.822	335174	344003	79.304	111.281 #
32) L7 AR-1260-2	8.221	7.020	836070	577177	148.825	142.284
33) L7 AR-1260-3	8.588	7.172	1425680	278040	311.888	79.661 #
34) L7 AR-1260-4	8.835	7.653	2991855	1942810	631.937	643.369
35) L7 AR-1260-5	9.146	7.899	765050	488174	76.660	65.351
36) L8 AR-1262-1	8.588	7.351	1425680	1141128	190.441	456.488 #
37) L8 AR-1262-2	9.146	7.899	765050	488174	59.649	55.497
38) L8 AR-1262-3	9.456	8.185	10104485	6628240	1191.028	1833.091 #
39) L8 AR-1262-4	9.553	8.250	6638684	4318565	1984.921	701.855 #
40) L8 AR-1262-5	10.218	8.743	1764473	1074456	390.370	377.403
41) L9 AR-1268-1	9.456	8.185	10104485	6628240	709.429	688.753
42) L9 AR-1268-2	9.553	8.250	6638684	4318565	538.548	524.186
43) L9 AR-1268-3	9.779	8.457	7818184	4852673	720.363	687.263
44) L9 AR-1268-4	10.218	8.743	1764473	1074456	376.661	362.990
45) L9 AR-1268-5	10.630	9.021	21628194	12425233	660.883	618.476

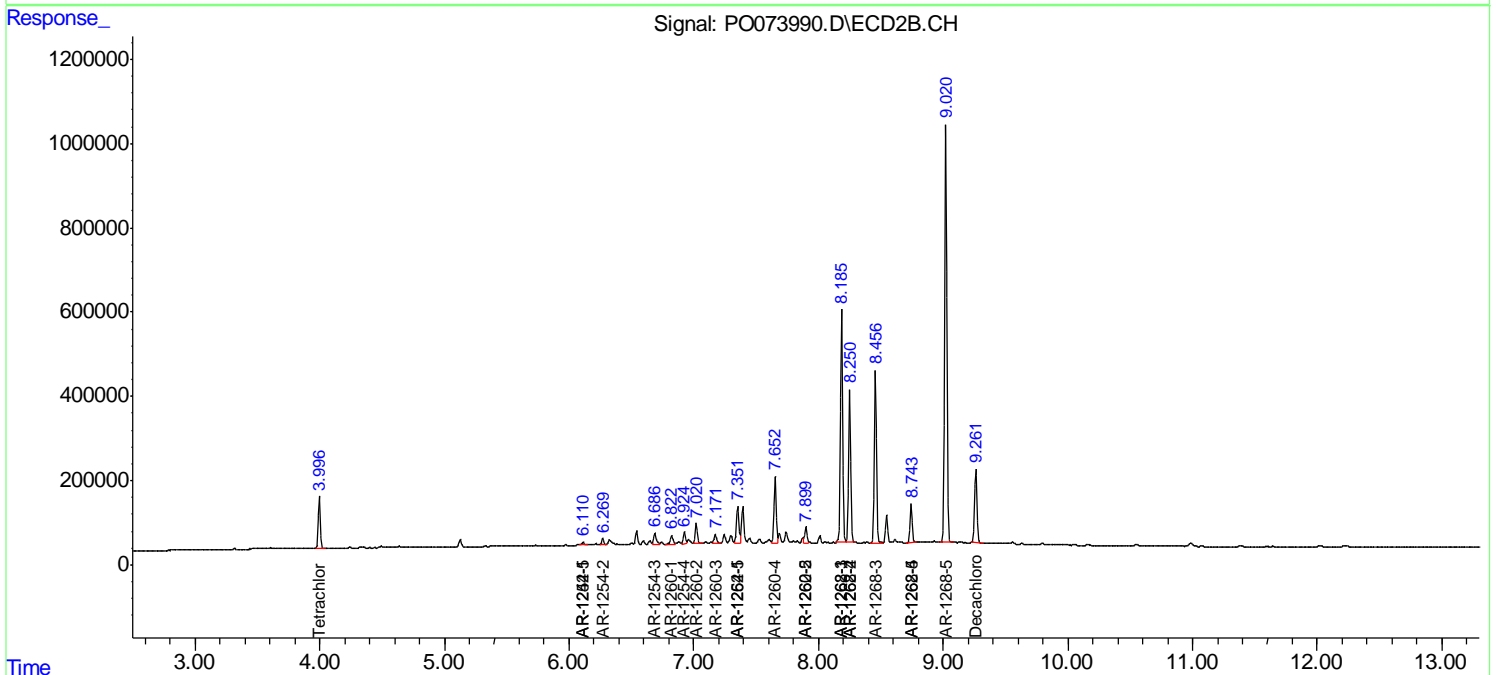
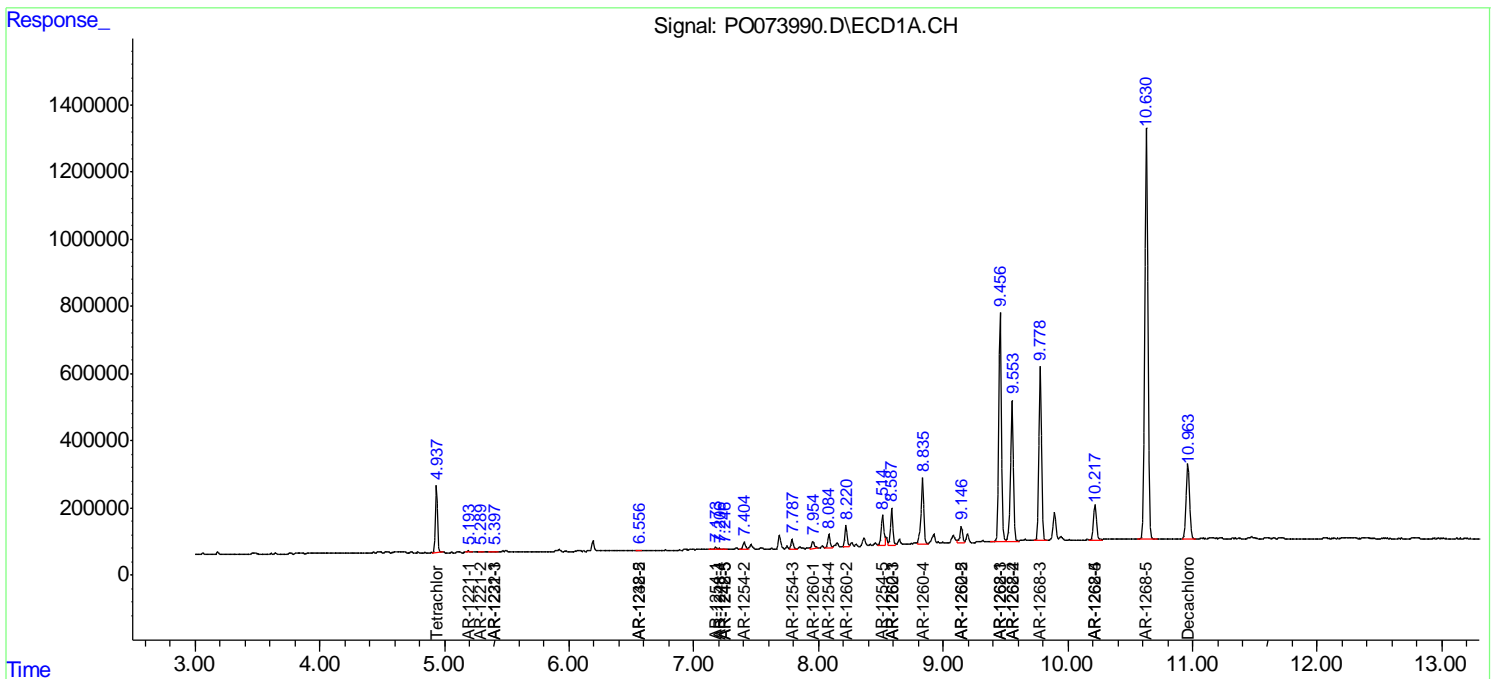
(f)=RT Delta > 1/2 Window (#)=Amounts differ by > 25% (m)=manual int.

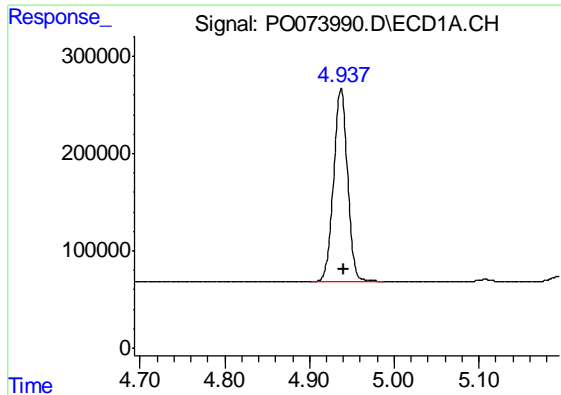
Data Path : Z:\pestpcbsrv\HPCHEM1\ECD_O\Data\PO122120\
 Data File : PO073990.D
 Signal(s) : Signal #1: ECD1A.CH Signal #2: ECD2B.CH
 Acq On : 21 Dec 2020 20:04
 Operator : DD\AJ
 Sample : L5163-11
 Misc :
 ALS Vial : 29 Sample Multiplier: 1

Instrument :
 ECD_O
 ClientSampled :
 DUP-40

Integration File signal 1: autoint1.e
 Integration File signal 2: autoint2.e
 Quant Time: Dec 22 02:20:05 2020
 Quant Method : Z:\pestpcbsrv\HPCHEM1\ECD_O\methods\PO121020.M
 Quant Title : GC EXTRACTABLES
 QLast Update : Fri Dec 11 03:58:06 2020
 Response via : Initial Calibration
 Integrator: ChemStation 6890 Scale Mode: Small noise peaks clipped

Volume Inj. : 2 µl
 Signal #1 Phase : ZB-MR1 Signal #2 Phase: ZB-MR2
 Signal #1 Info : 30Mx0.32mmx 0.50µ Signal #2 Info : 30M x 0.32mm x 0.25µm

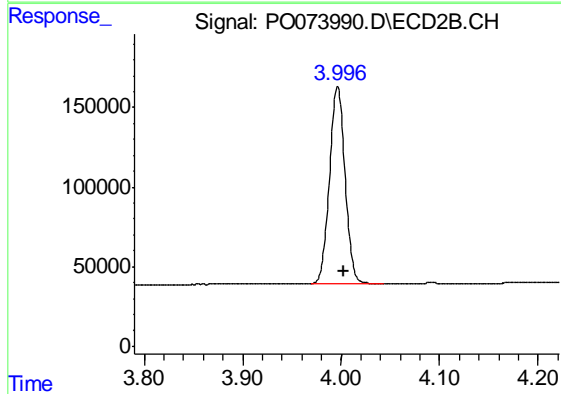




#1 Tetrachloro-m-xylene

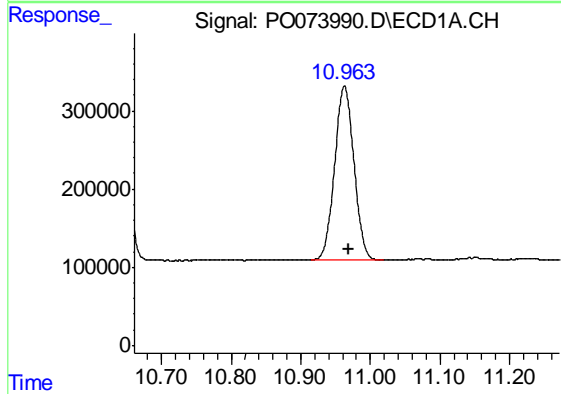
R.T.: 4.937 min
 Delta R.T.: -0.004 min
 Response: 2278526
 Conc: 24.92 ng/ml

Instrument :
 ECD_O
 ClientSampleId :
 DUP-40



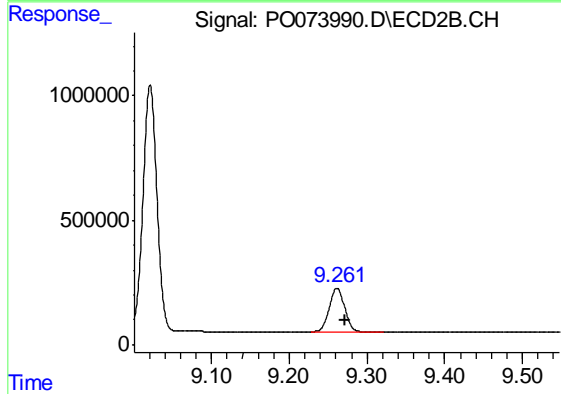
#1 Tetrachloro-m-xylene

R.T.: 3.996 min
 Delta R.T.: -0.007 min
 Response: 1358821
 Conc: 25.33 ng/ml



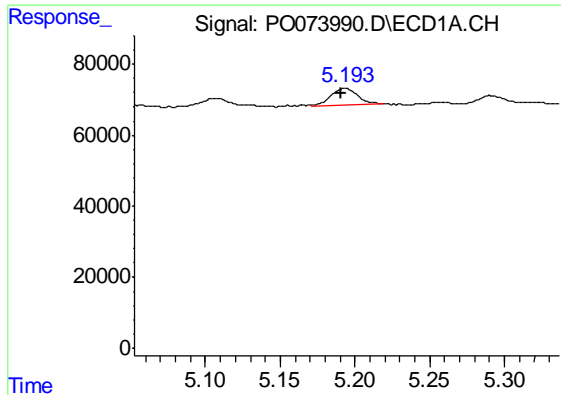
#2 Decachlorobiphenyl

R.T.: 10.963 min
 Delta R.T.: -0.005 min
 Response: 4282720
 Conc: 51.82 ng/ml



#2 Decachlorobiphenyl

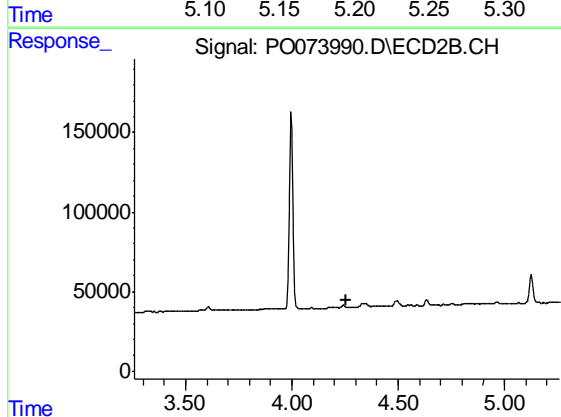
R.T.: 9.262 min
 Delta R.T.: -0.010 min
 Response: 2355375
 Conc: 50.34 ng/ml



#8 AR-1221-1

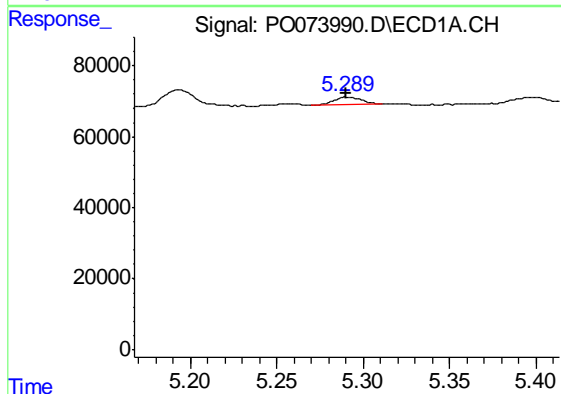
R.T.: 5.194 min
 Delta R.T.: 0.003 min
 Response: 56888
 Conc: 53.69 ng/ml

Instrument :
 ECD_O
 ClientSampled :
 DUP-40



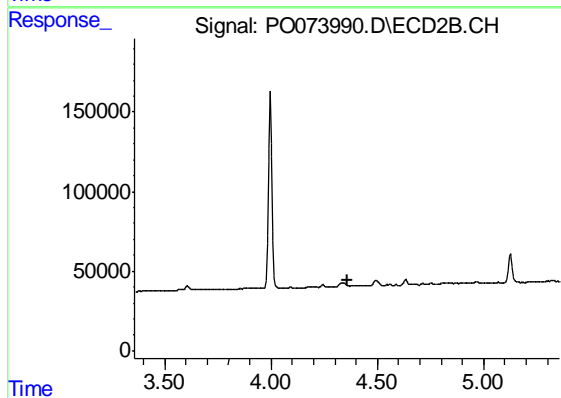
#8 AR-1221-1

R.T.: 0.000 min
 Exp R.T. : 4.259 min
 Response: 0
 Conc: N.D.



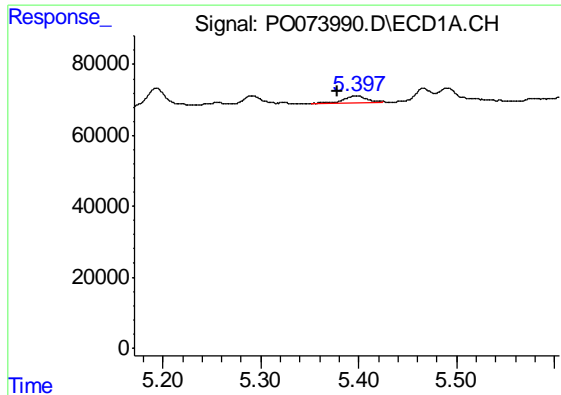
#9 AR-1221-2

R.T.: 5.290 min
 Delta R.T.: 0.000 min
 Response: 24281
 Conc: 30.91 ng/ml



#9 AR-1221-2

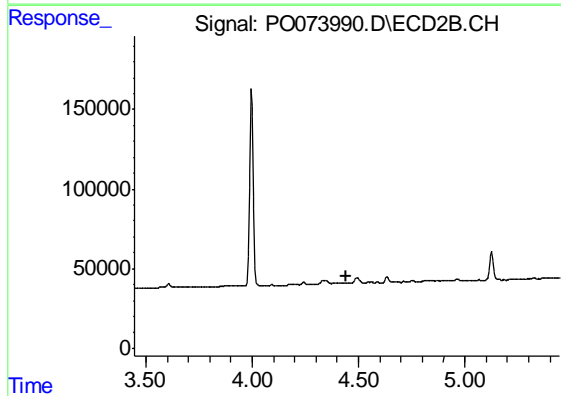
R.T.: 0.000 min
 Exp R.T. : 4.357 min
 Response: 0
 Conc: N.D.



#10 AR-1221-3

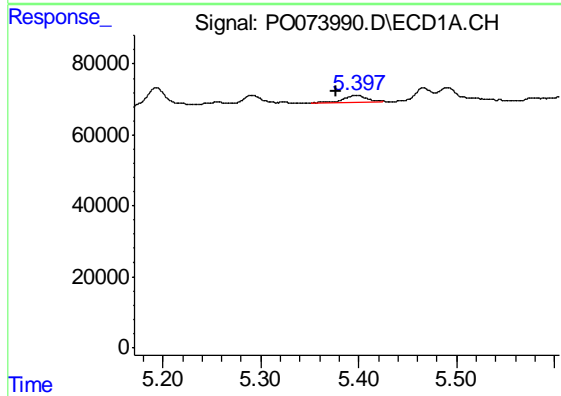
R.T.: 5.397 min
 Delta R.T.: 0.019 min
 Response: 32069
 Conc: 13.18 ng/ml

Instrument :
 ECD_O
 ClientSampleId :
 DUP-40



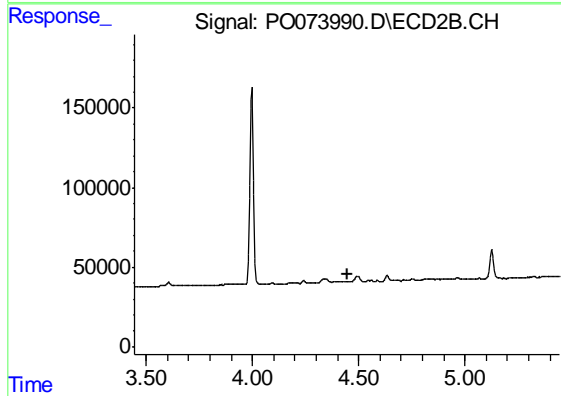
#10 AR-1221-3

R.T.: 0.000 min
 Exp R.T. : 4.445 min
 Response: 0
 Conc: N.D.



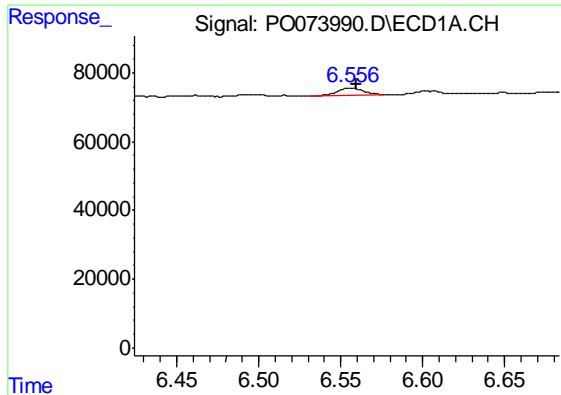
#11 AR-1232-1

R.T.: 5.397 min
 Delta R.T.: 0.020 min
 Response: 32069
 Conc: 15.55 ng/ml



#11 AR-1232-1

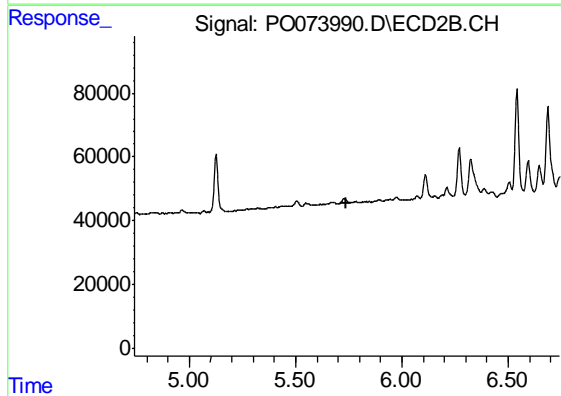
R.T.: 0.000 min
 Exp R.T. : 4.445 min
 Response: 0
 Conc: N.D.



#15 AR-1232-5

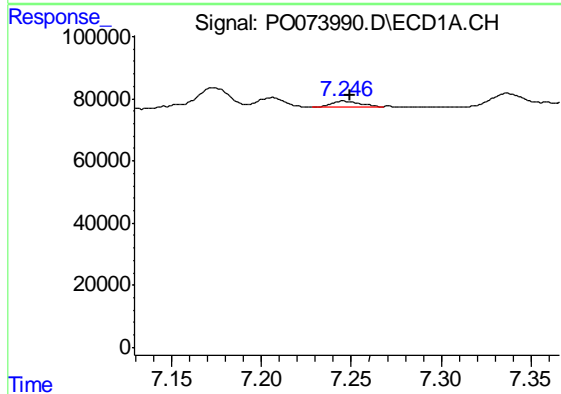
R.T.: 6.556 min
 Delta R.T.: -0.004 min
 Response: 26112
 Conc: 36.47 ng/ml

Instrument :
 ECD_O
 ClientSampled :
 DUP-40



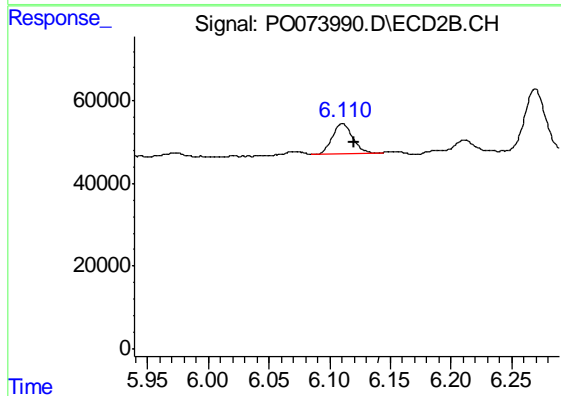
#15 AR-1232-5

R.T.: 0.000 min
 Exp R.T. : 5.741 min
 Response: 0
 Conc: N.D.



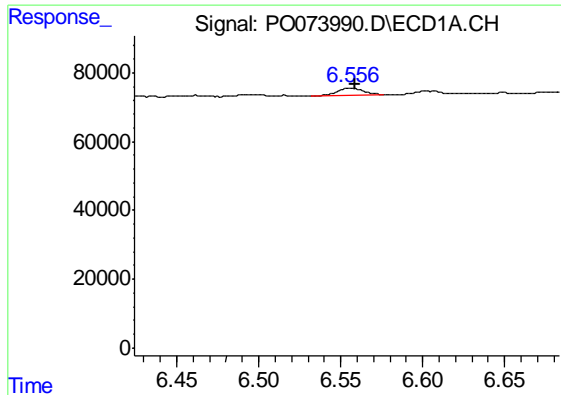
#20 AR-1242-5

R.T.: 7.246 min
 Delta R.T.: -0.004 min
 Response: 20978
 Conc: 9.61 ng/ml



#20 AR-1242-5

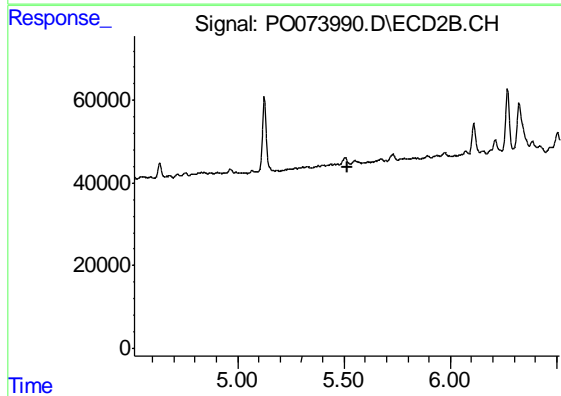
R.T.: 6.111 min
 Delta R.T.: -0.010 min
 Response: 85298
 Conc: 50.04 ng/ml



#22 AR-1248-2

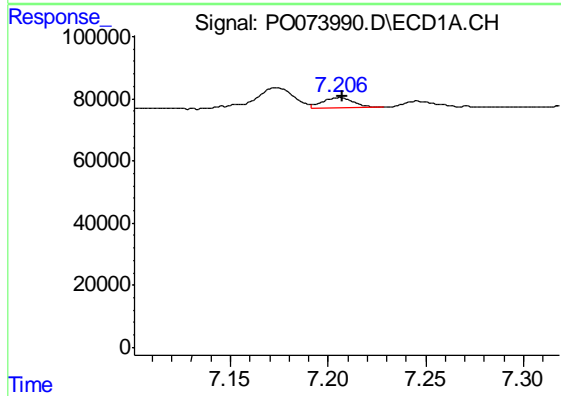
R.T.: 6.556 min
 Delta R.T.: -0.003 min
 Response: 26112
 Conc: 9.34 ng/ml

Instrument :
 ECD_O
 ClientSampled :
 DUP-40



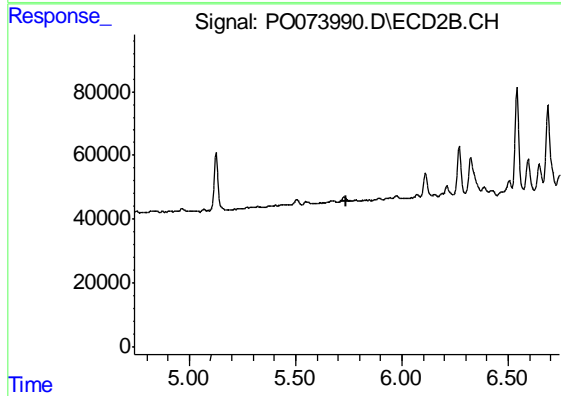
#22 AR-1248-2

R.T.: 0.000 min
 Exp R.T. : 5.514 min
 Response: 0
 Conc: N.D.



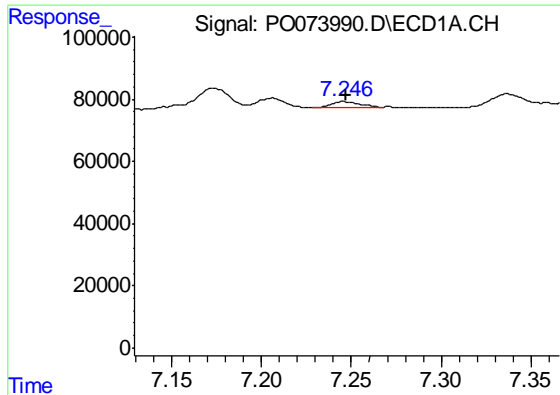
#24 AR-1248-4

R.T.: 7.206 min
 Delta R.T.: -0.001 min
 Response: 36743
 Conc: 9.19 ng/ml



#24 AR-1248-4

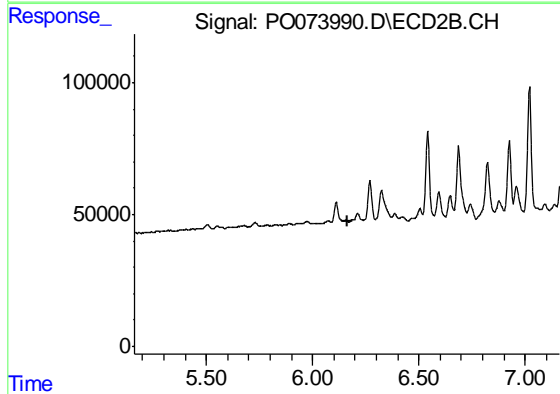
R.T.: 0.000 min
 Exp R.T. : 5.741 min
 Response: 0
 Conc: N.D.



#25 AR-1248-5

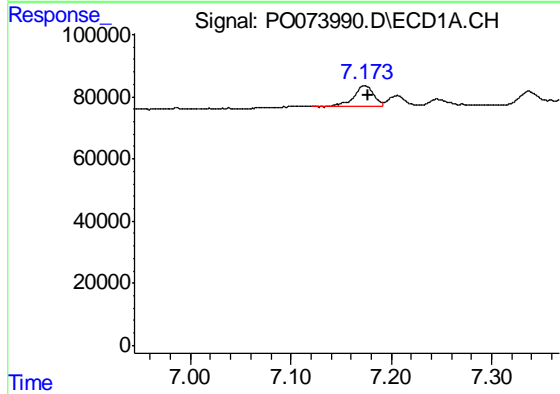
R.T.: 7.246 min
 Delta R.T.: -0.001 min
 Response: 20978
 Conc: 5.55 ng/ml

Instrument :
 ECD_O
 ClientSampleId :
 DUP-40



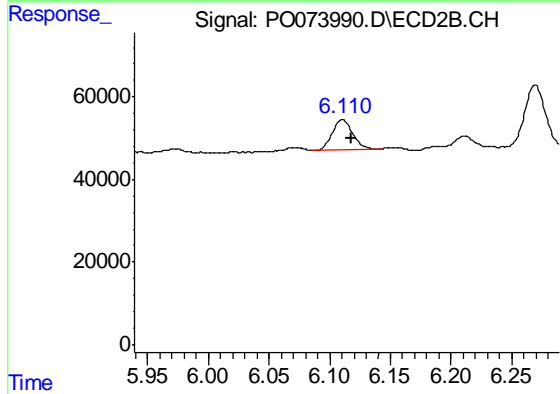
#25 AR-1248-5

R.T.: 0.000 min
 Exp R.T. : 6.161 min
 Response: 0
 Conc: N.D.



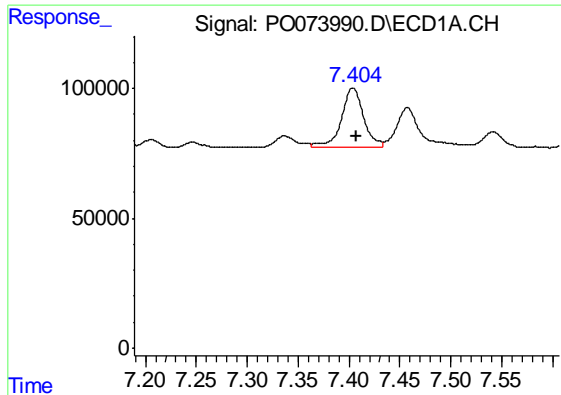
#26 AR-1254-1

R.T.: 7.173 min
 Delta R.T.: -0.004 min
 Response: 89562
 Conc: 23.60 ng/ml



#26 AR-1254-1

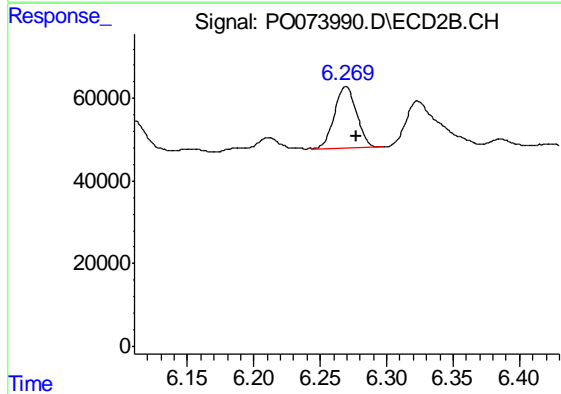
R.T.: 6.111 min
 Delta R.T.: -0.007 min
 Response: 85298
 Conc: 24.14 ng/ml



#27 AR-1254-2

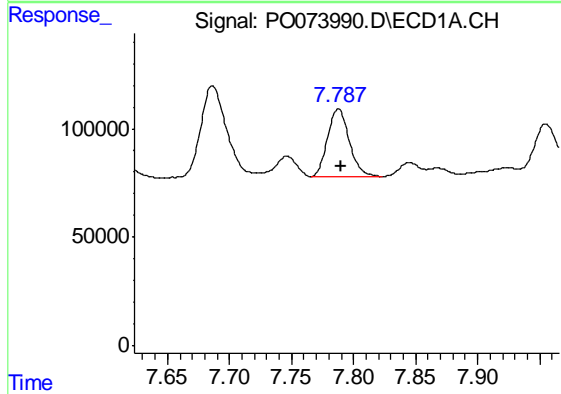
R.T.: 7.404 min
 Delta R.T.: -0.003 min
 Response: 351873
 Conc: 59.68 ng/ml

Instrument :
 ECD_O
 ClientSampled :
 DUP-40



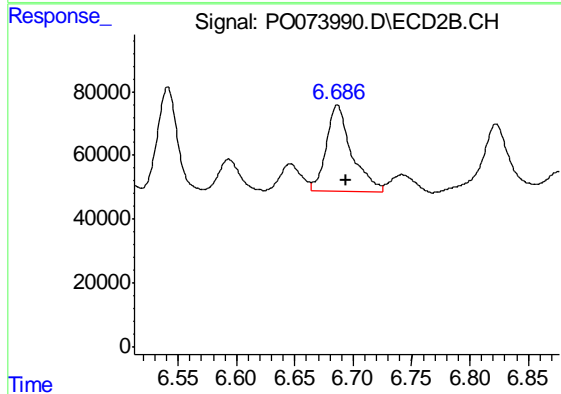
#27 AR-1254-2

R.T.: 6.269 min
 Delta R.T.: -0.008 min
 Response: 173481
 Conc: 55.57 ng/ml



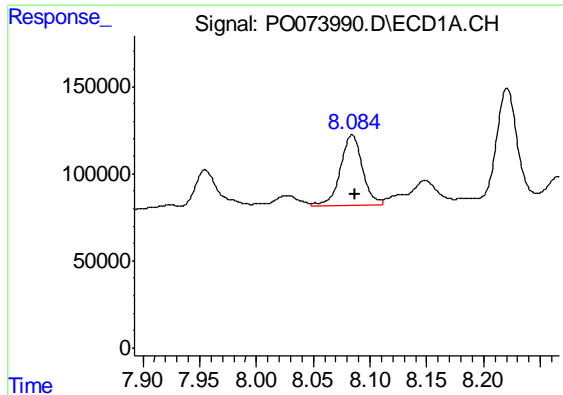
#28 AR-1254-3

R.T.: 7.788 min
 Delta R.T.: -0.003 min
 Response: 383006
 Conc: 62.51 ng/ml



#28 AR-1254-3

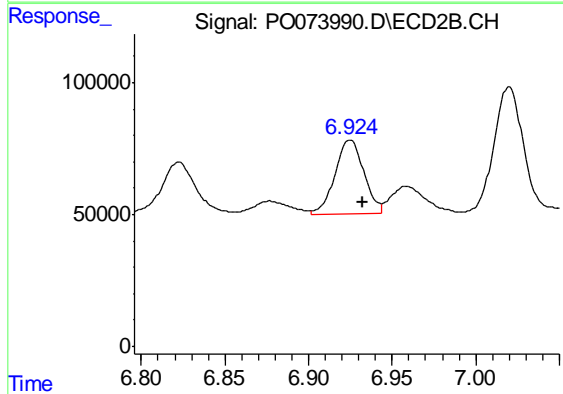
R.T.: 6.686 min
 Delta R.T.: -0.008 min
 Response: 409318
 Conc: 83.60 ng/ml



#29 AR-1254-4

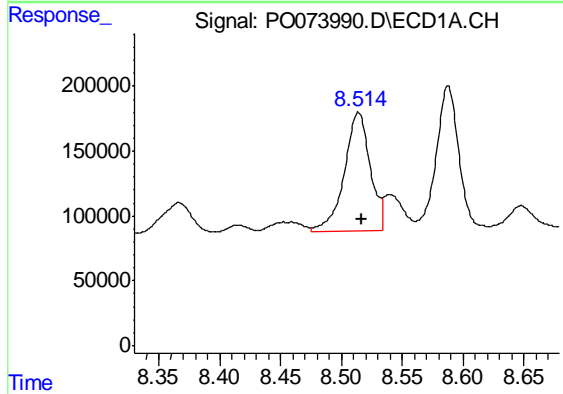
R.T.: 8.084 min
 Delta R.T.: -0.003 min
 Response: 547922
 Conc: 104.45 ng/ml

Instrument :
 ECD_O
 ClientSampleId :
 DUP-40



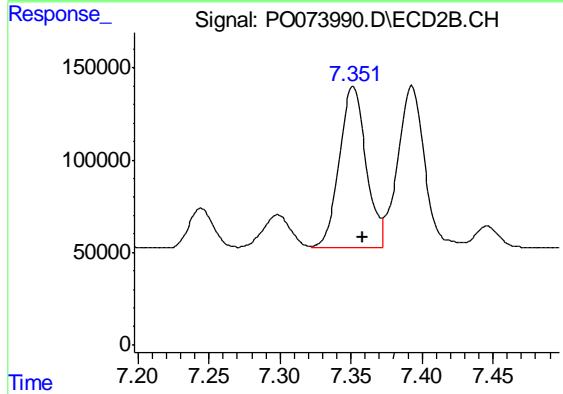
#29 AR-1254-4

R.T.: 6.925 min
 Delta R.T.: -0.007 min
 Response: 341800
 Conc: 97.46 ng/ml



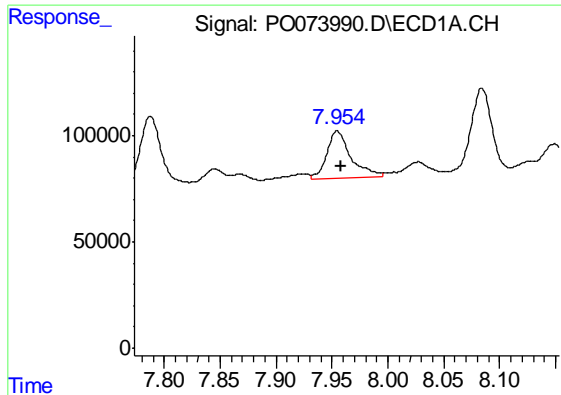
#30 AR-1254-5

R.T.: 8.514 min
 Delta R.T.: -0.003 min
 Response: 1346008
 Conc: 261.33 ng/ml



#30 AR-1254-5

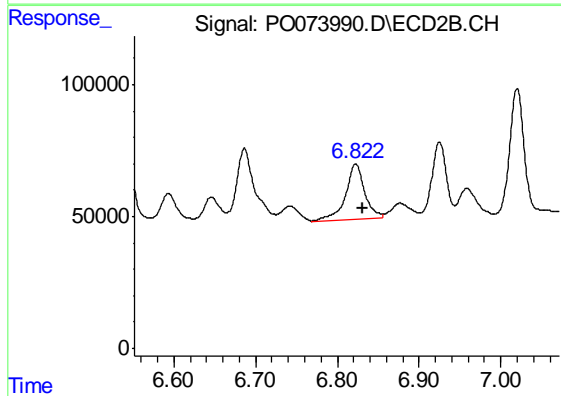
R.T.: 7.351 min
 Delta R.T.: -0.007 min
 Response: 1141128
 Conc: 258.78 ng/ml



#31 AR-1260-1

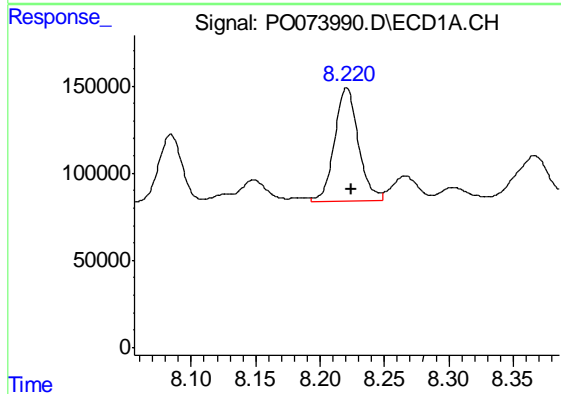
R.T.: 7.955 min
 Delta R.T.: -0.004 min
 Response: 335174
 Conc: 79.30 ng/ml

Instrument :
 ECD_O
 ClientSampleId :
 DUP-40



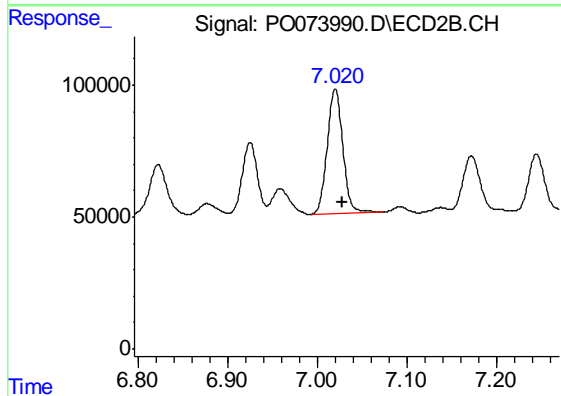
#31 AR-1260-1

R.T.: 6.822 min
 Delta R.T.: -0.009 min
 Response: 344003
 Conc: 111.28 ng/ml



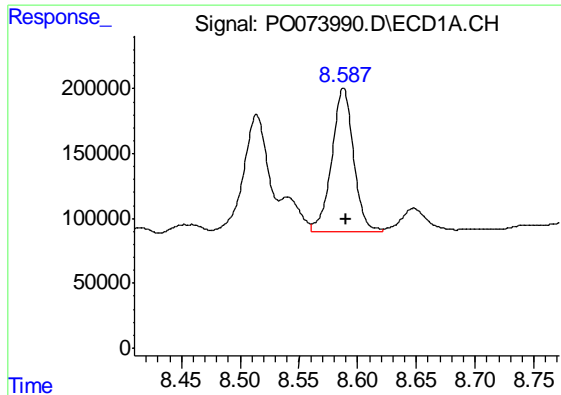
#32 AR-1260-2

R.T.: 8.221 min
 Delta R.T.: -0.004 min
 Response: 836070
 Conc: 148.82 ng/ml



#32 AR-1260-2

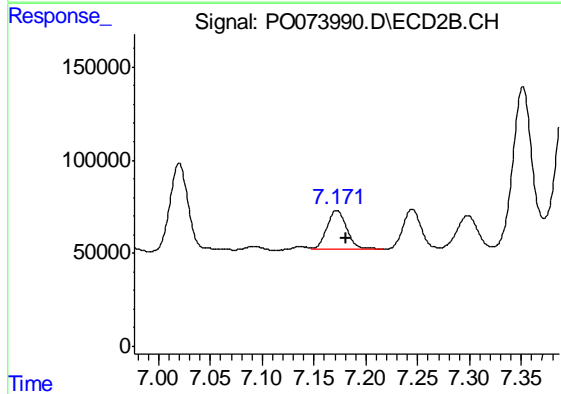
R.T.: 7.020 min
 Delta R.T.: -0.008 min
 Response: 577177
 Conc: 142.28 ng/ml



#33 AR-1260-3

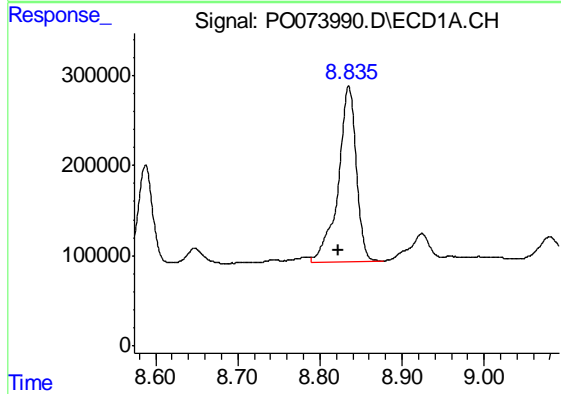
R.T.: 8.588 min
 Delta R.T.: -0.003 min
 Response: 1425680
 Conc: 311.89 ng/ml

Instrument :
 ECD_O
 ClientSampled :
 DUP-40



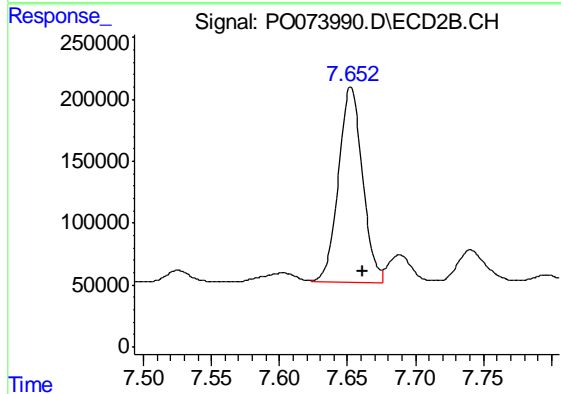
#33 AR-1260-3

R.T.: 7.172 min
 Delta R.T.: -0.010 min
 Response: 278040
 Conc: 79.66 ng/ml



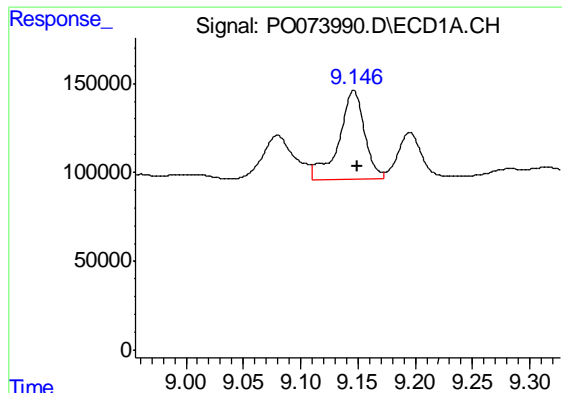
#34 AR-1260-4

R.T.: 8.835 min
 Delta R.T.: 0.013 min
 Response: 2991855
 Conc: 631.94 ng/ml



#34 AR-1260-4

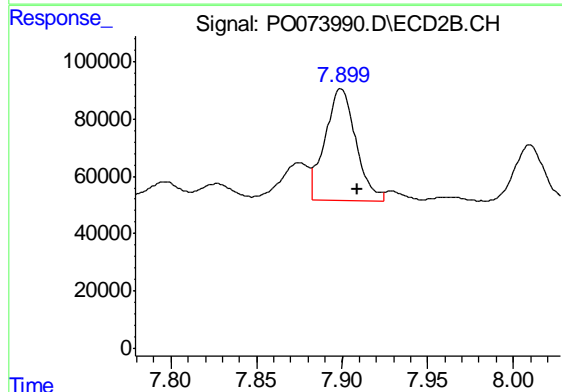
R.T.: 7.653 min
 Delta R.T.: -0.009 min
 Response: 1942810
 Conc: 643.37 ng/ml



#35 AR-1260-5

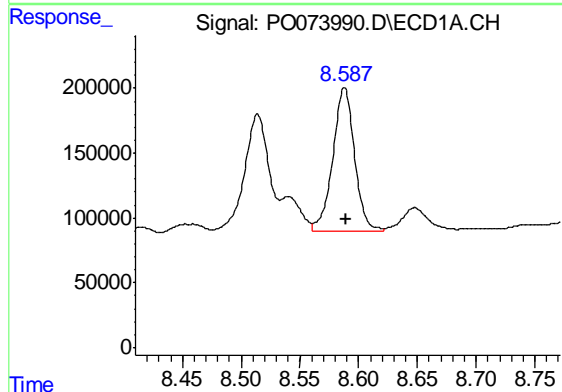
R.T.: 9.146 min
 Delta R.T.: -0.003 min
 Response: 765050
 Conc: 76.66 ng/ml

Instrument :
 ECD_O
 ClientSampleId :
 DUP-40



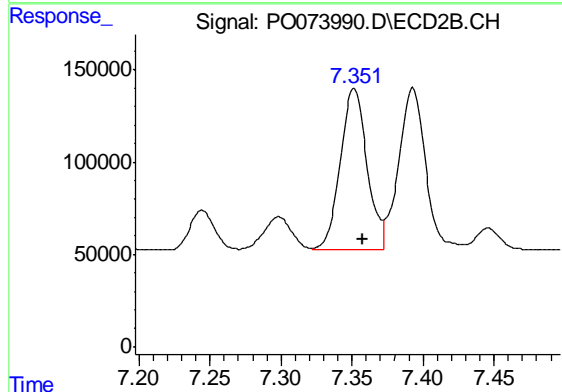
#35 AR-1260-5

R.T.: 7.899 min
 Delta R.T.: -0.010 min
 Response: 488174
 Conc: 65.35 ng/ml



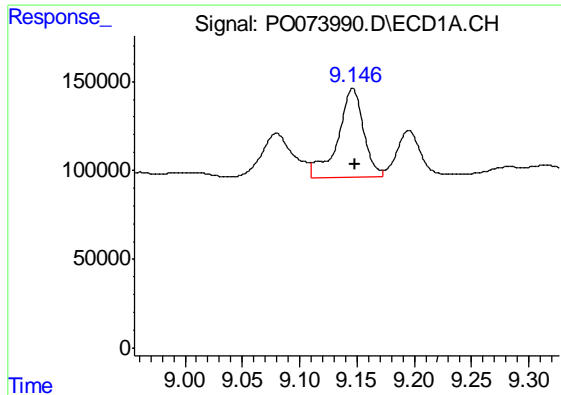
#36 AR-1262-1

R.T.: 8.588 min
 Delta R.T.: -0.002 min
 Response: 1425680
 Conc: 190.44 ng/ml



#36 AR-1262-1

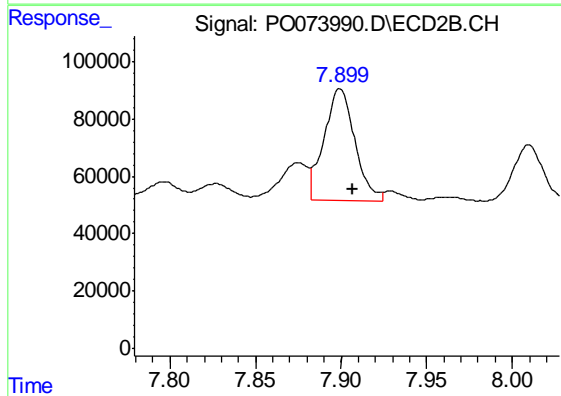
R.T.: 7.351 min
 Delta R.T.: -0.006 min
 Response: 1141128
 Conc: 456.49 ng/ml



#37 AR-1262-2

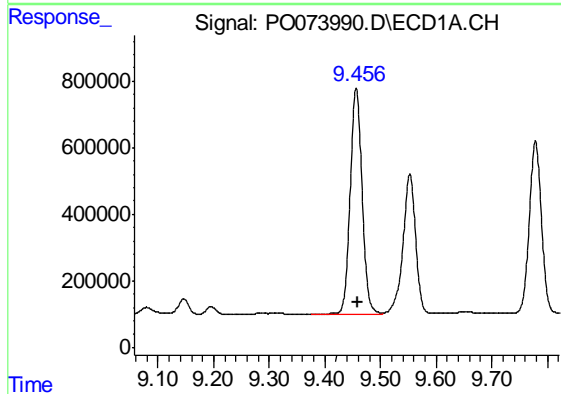
R.T.: 9.146 min
 Delta R.T.: -0.002 min
 Response: 765050
 Conc: 59.65 ng/ml

Instrument :
 ECD_O
 ClientSampled :
 DUP-40



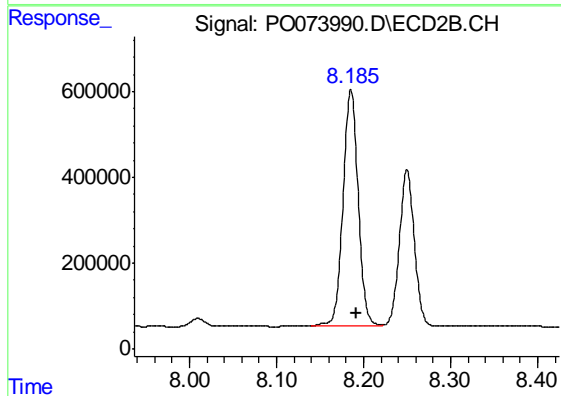
#37 AR-1262-2

R.T.: 7.899 min
 Delta R.T.: -0.008 min
 Response: 488174
 Conc: 55.50 ng/ml



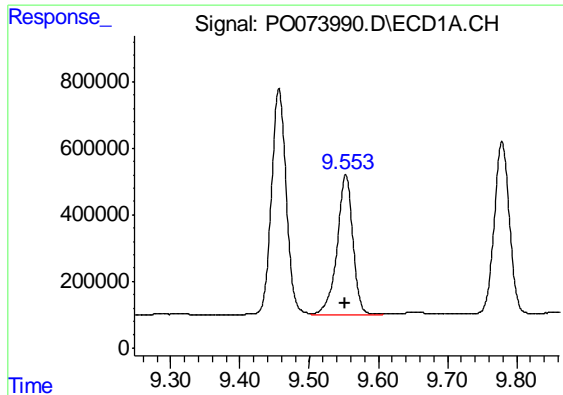
#38 AR-1262-3

R.T.: 9.456 min
 Delta R.T.: -0.003 min
 Response: 10104485
 Conc: 1191.03 ng/ml



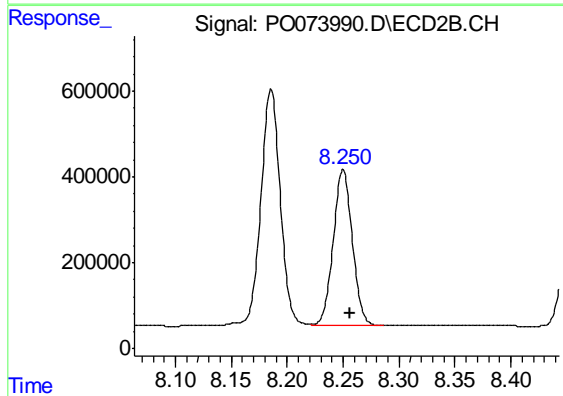
#38 AR-1262-3

R.T.: 8.185 min
 Delta R.T.: -0.007 min
 Response: 6628240
 Conc: 1833.09 ng/ml

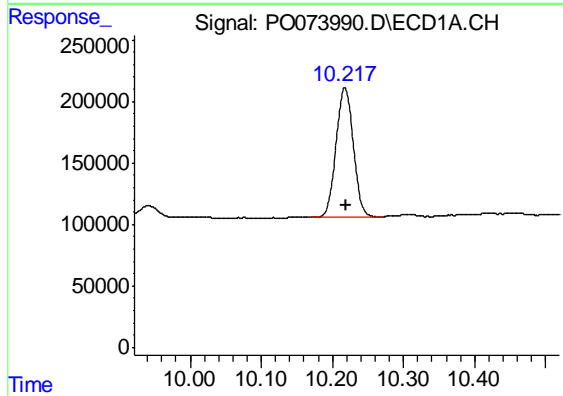


#39 AR-1262-4
 R.T.: 9.553 min
 Delta R.T.: 0.000 min
 Response: 6638684
 Conc: 1984.92 ng/ml

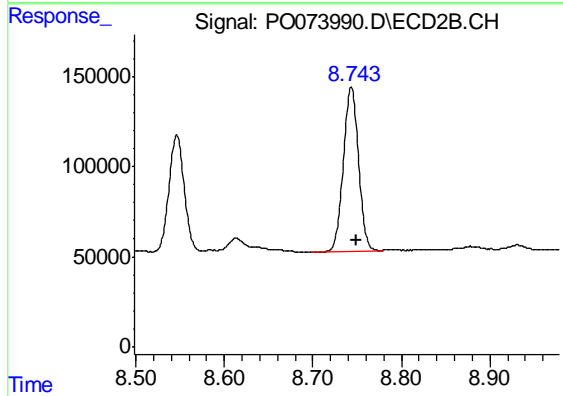
Instrument :
 ECD_O
 ClientSampleId :
 DUP-40



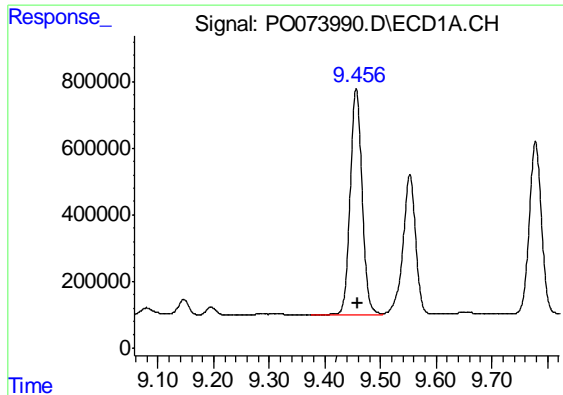
#39 AR-1262-4
 R.T.: 8.250 min
 Delta R.T.: -0.006 min
 Response: 4318565
 Conc: 701.85 ng/ml



#40 AR-1262-5
 R.T.: 10.218 min
 Delta R.T.: -0.003 min
 Response: 1764473
 Conc: 390.37 ng/ml



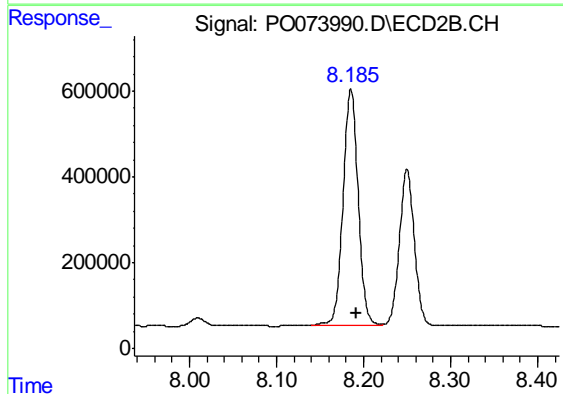
#40 AR-1262-5
 R.T.: 8.743 min
 Delta R.T.: -0.006 min
 Response: 1074456
 Conc: 377.40 ng/ml



#41 AR-1268-1

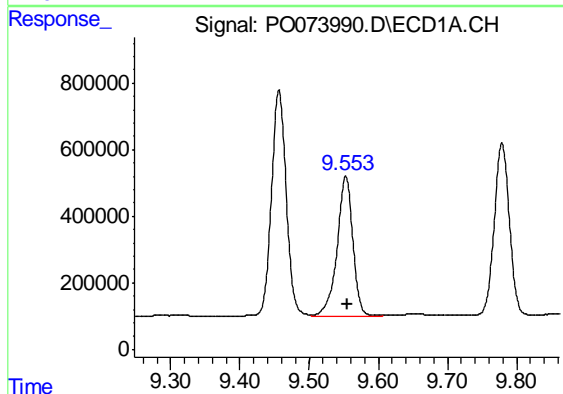
R.T.: 9.456 min
Delta R.T.: -0.003 min
Response: 10104485
Conc: 709.43 ng/ml

Instrument :
ECD_O
ClientSampled :
DUP-40



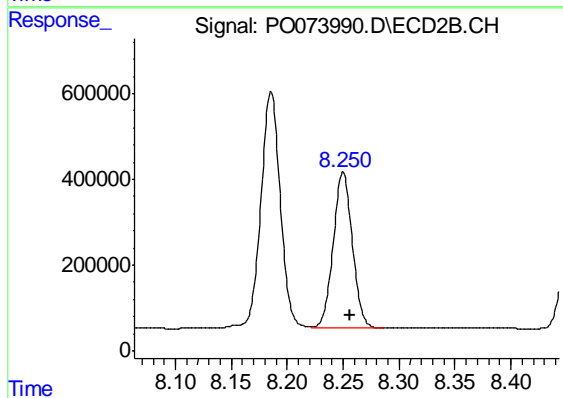
#41 AR-1268-1

R.T.: 8.185 min
Delta R.T.: -0.006 min
Response: 6628240
Conc: 688.75 ng/ml



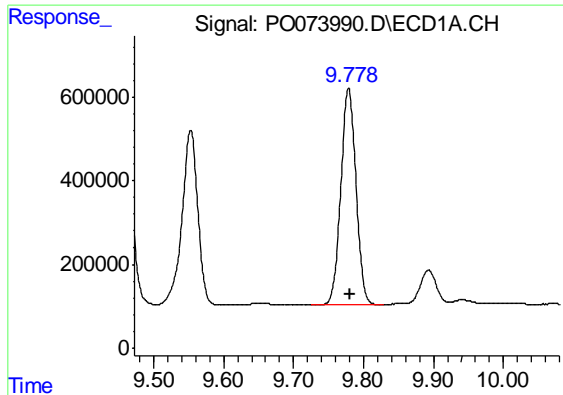
#42 AR-1268-2

R.T.: 9.553 min
Delta R.T.: -0.003 min
Response: 6638684
Conc: 538.55 ng/ml



#42 AR-1268-2

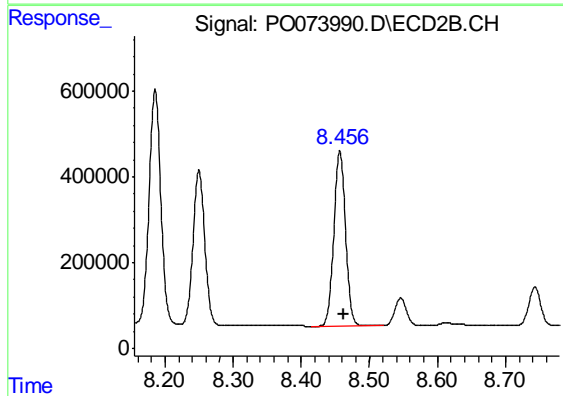
R.T.: 8.250 min
Delta R.T.: -0.007 min
Response: 4318565
Conc: 524.19 ng/ml



#43 AR-1268-3

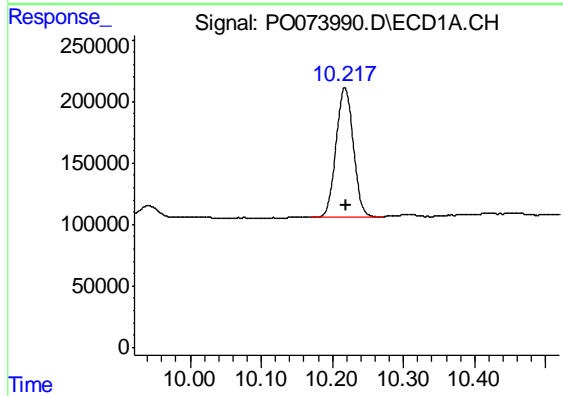
R.T.: 9.779 min
Delta R.T.: -0.003 min
Response: 7818184
Conc: 720.36 ng/ml

Instrument :
ECD_O
ClientSampled :
DUP-40



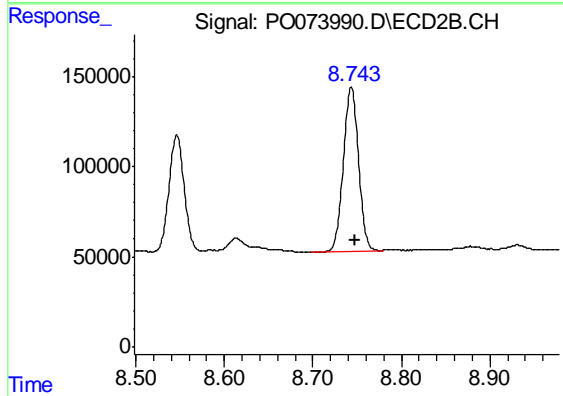
#43 AR-1268-3

R.T.: 8.457 min
Delta R.T.: -0.006 min
Response: 4852673
Conc: 687.26 ng/ml



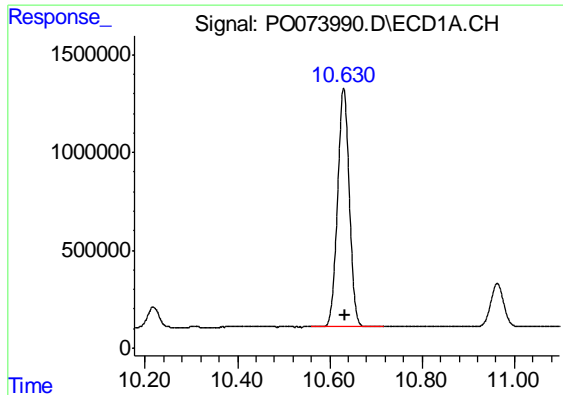
#44 AR-1268-4

R.T.: 10.218 min
Delta R.T.: -0.002 min
Response: 1764473
Conc: 376.66 ng/ml



#44 AR-1268-4

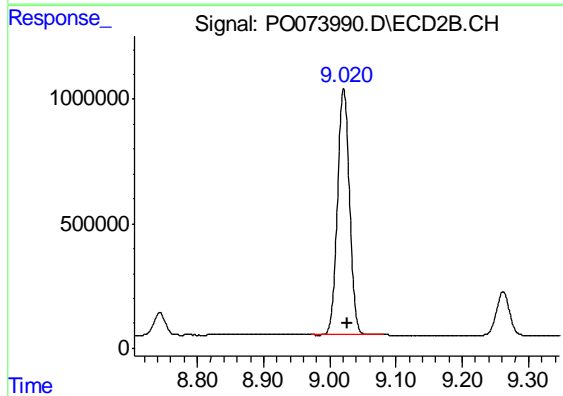
R.T.: 8.743 min
Delta R.T.: -0.005 min
Response: 1074456
Conc: 362.99 ng/ml



#45 AR-1268-5

R.T.: 10.630 min
Delta R.T.: -0.002 min
Response: 21628194
Conc: 660.88 ng/ml

Instrument :
ECD_O
ClientSampleId :
DUP-40



#45 AR-1268-5

R.T.: 9.021 min
Delta R.T.: -0.007 min
Response: 12425233
Conc: 618.48 ng/ml