

Data Path : Z:\pestpcbsrv\HPCHEM1\ECD_0\Data\PO122120\
 Data File : P0074000.D
 Signal(s) : Signal #1: ECD1A.CH Signal #2: ECD2B.CH
 Acq On : 21 Dec 2020 23:30
 Operator : DD\AJ
 Sample : L5163-19
 Misc :
 ALS Vial : 37 Sample Multiplier: 1

Instrument :
 ECD_0
 ClientSampleId :
 S22-04-A

Integration File signal 1: autoint1.e
 Integration File signal 2: autoint2.e
 Quant Time: Dec 22 02:27:36 2020
 Quant Method : Z:\pestpcbsrv\HPCHEM1\ECD_0\methods\PO121020.M
 Quant Title : GC EXTRACTABLES
 QLast Update : Fri Dec 11 03:58:06 2020
 Response via : Initial Calibration
 Integrator: ChemStation 6890 Scale Mode: Small noise peaks clipped

Volume Inj. : 2 µl
 Signal #1 Phase : ZB-MR1 Signal #2 Phase: ZB-MR2
 Signal #1 Info : 30Mx0.32mmx 0.50µ Signal #2 Info : 30M x 0.32mm x 0.25µm

Compound	RT#1	RT#2	Resp#1	Resp#2	ng/ml	ng/ml

System Monitoring Compounds						
1) SA Tetrachlo...	4.939	3.998	2201165	1312515	24.075	24.470
2) SA Decachlor...	10.967	9.263	8024624	4473390	97.104	95.604
Target Compounds						
6) L1 AR-1016-4	0.000	5.508	0	120275	N.D.	91.207 #
7) L1 AR-1016-5	6.778	5.735	68668	62658	28.922	38.239 #
8) L2 AR-1221-1	5.195	0.000	31752	0	29.968	N.D. #
9) L2 AR-1221-2	5.292	0.000	24204	0	30.814	N.D. #
15) L3 AR-1232-5	6.559	5.735	171170	62658	239.069	93.754 #
20) L4 AR-1242-5	7.249	6.113	164650	470139	75.395	275.807 #
22) L5 AR-1248-2	6.559	5.508	171170	120275	61.252	64.824
23) L5 AR-1248-3	6.778	0.000	68668	0	20.967	N.D. #
24) L5 AR-1248-4	7.207	5.735	222075	62658	55.530	27.838 #
25) L5 AR-1248-5	7.249	6.156	164650	47607	43.538	20.490 #
26) L6 AR-1254-1	7.177	6.113	526016	470139	138.579	133.031
27) L6 AR-1254-2	7.406	6.271	1330883	783727	225.734	251.033
28) L6 AR-1254-3	7.790	6.689	1858114	1522422	303.257	310.952
29) L6 AR-1254-4	8.087	6.927	1857092	1331489	354.002	379.660
30) L6 AR-1254-5	8.516	7.353	3432308	2724157	666.399	617.775
31) L7 AR-1260-1	7.956	6.825	1112498	964940	263.224	312.147
32) L7 AR-1260-2	8.223	7.022	1859824	1389340	331.059	342.496
33) L7 AR-1260-3	8.591	7.174	4186585	1000430	915.876	286.630 #
34) L7 AR-1260-4	8.838f	7.654	8178236	5259507	1727.400	1741.706
35) L7 AR-1260-5	9.148	7.902	1903090	1542926	190.695	206.548
36) L8 AR-1262-1	8.591	7.353	4186585	2724157	559.241	1089.750 #
37) L8 AR-1262-2	9.148	7.902	1903090	1542926	148.379	175.405
38) L8 AR-1262-3	9.459	8.187	28660930	19460982	3378.299	5382.084 #
39) L8 AR-1262-4	9.556	8.251	19867846	13485793	5940.350	2191.715 #
40) L8 AR-1262-5	10.221	8.745	5377527	3300717	1189.718	1159.379
41) L9 AR-1268-1	9.459	8.187	28660930	19460982	2012.263	2022.229
42) L9 AR-1268-2	9.556	8.251	19867846	13485793	1611.734	1636.902
43) L9 AR-1268-3	9.782	8.458	19915807	12781046	1835.031	1810.124
44) L9 AR-1268-4	10.221	8.745	5377527	3300717	1147.937	1115.102
45) L9 AR-1268-5	10.635	9.023	55770267	33040191	1704.148	1644.602

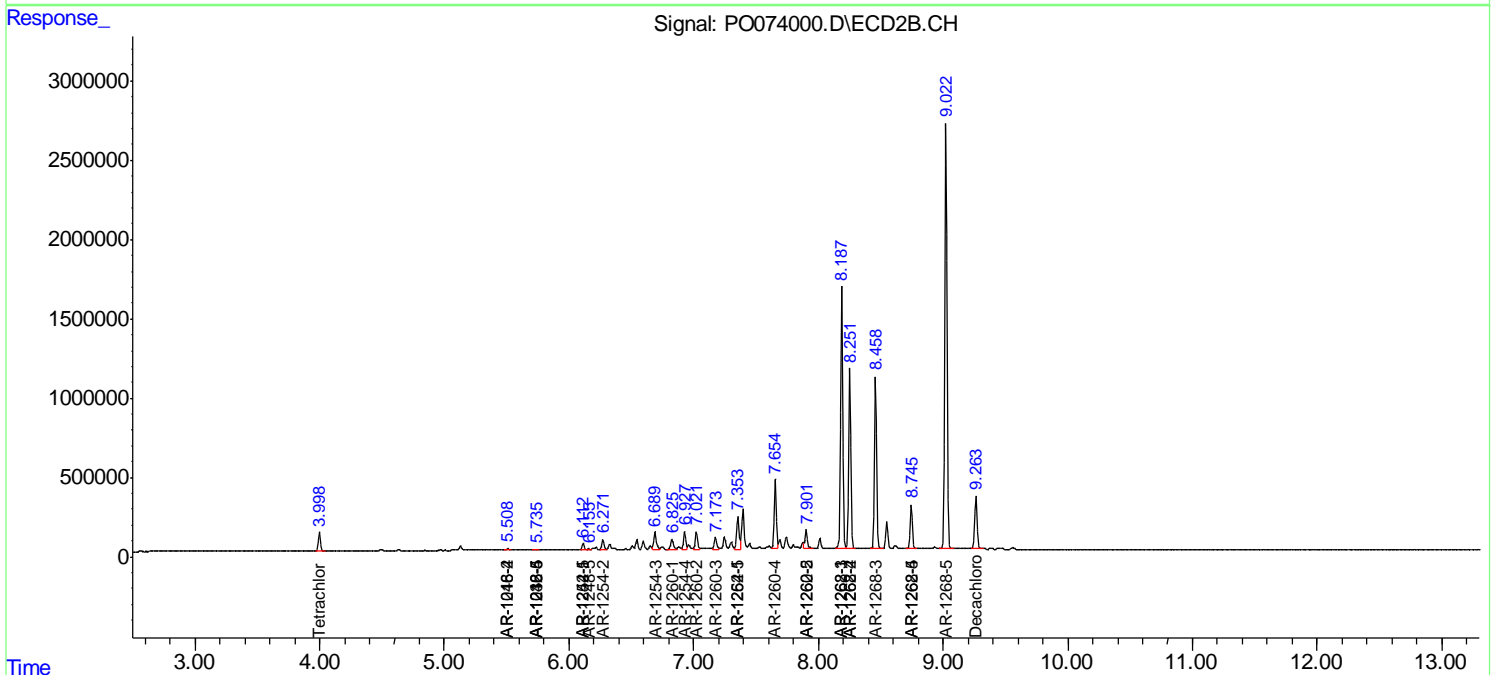
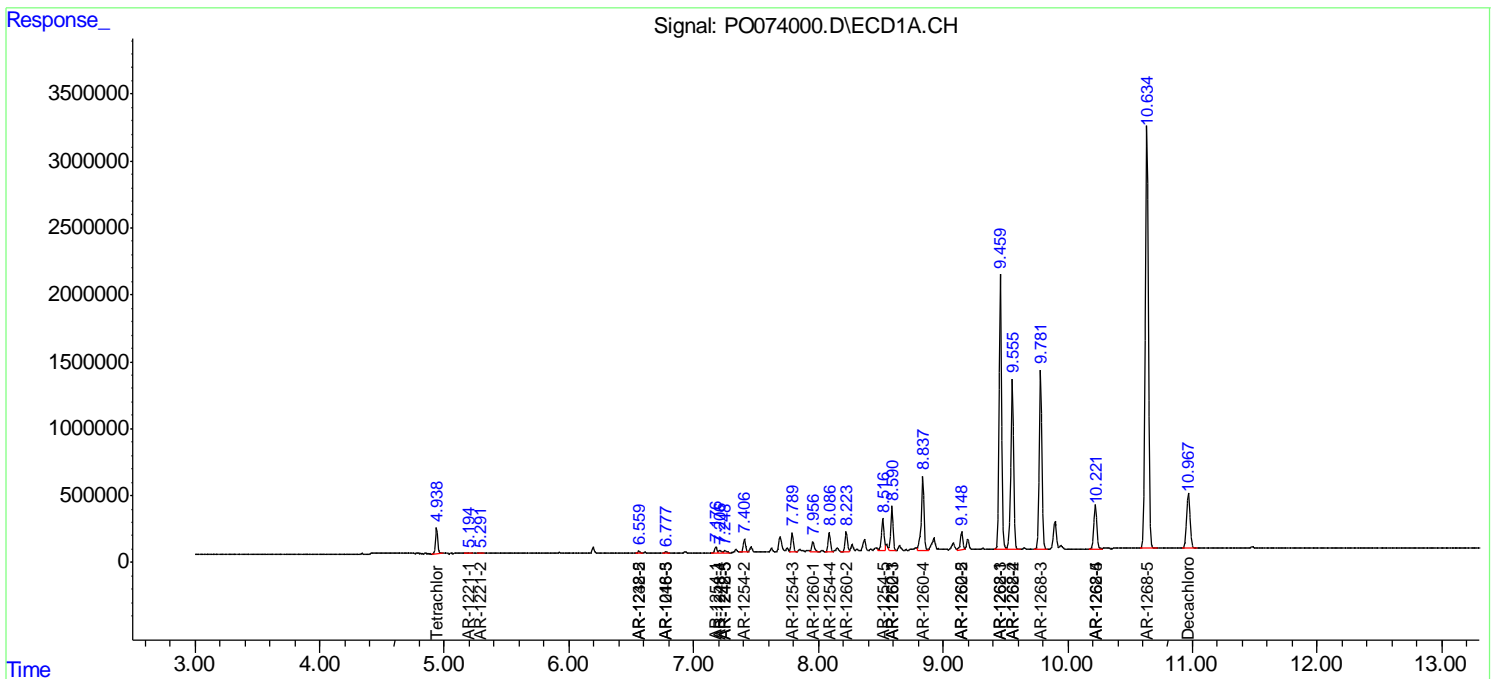
(f)=RT Delta > 1/2 Window (#)=Amounts differ by > 25% (m)=manual int.

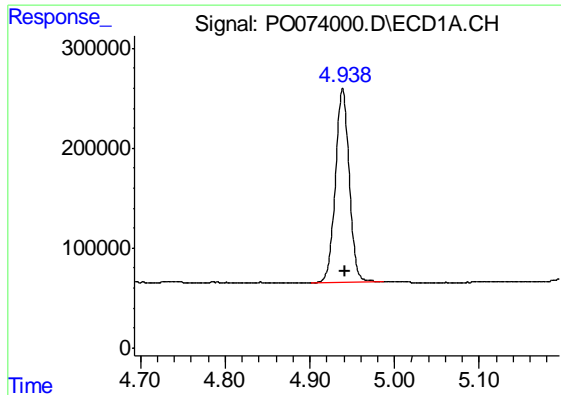
Data Path : Z:\pestpcbsrv\HPCHEM1\ECD_O\Data\PO122120\
 Data File : PO074000.D
 Signal(s) : Signal #1: ECD1A.CH Signal #2: ECD2B.CH
 Acq On : 21 Dec 2020 23:30
 Operator : DD\AJ
 Sample : L5163-19
 Misc :
 ALS Vial : 37 Sample Multiplier: 1

Instrument :
 ECD_O
 ClientSampled :
 S22-04-A

Integration File signal 1: autoint1.e
 Integration File signal 2: autoint2.e
 Quant Time: Dec 22 02:27:36 2020
 Quant Method : Z:\pestpcbsrv\HPCHEM1\ECD_O\methods\PO121020.M
 Quant Title : GC EXTRACTABLES
 QLast Update : Fri Dec 11 03:58:06 2020
 Response via : Initial Calibration
 Integrator: ChemStation 6890 Scale Mode: Small noise peaks clipped

Volume Inj. : 2 µl
 Signal #1 Phase : ZB-MR1 Signal #2 Phase: ZB-MR2
 Signal #1 Info : 30Mx0.32mmx 0.50µ Signal #2 Info : 30M x 0.32mm x 0.25µm

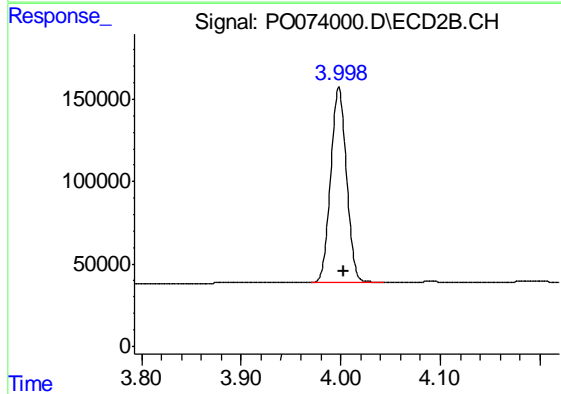




#1 Tetrachloro-m-xylene

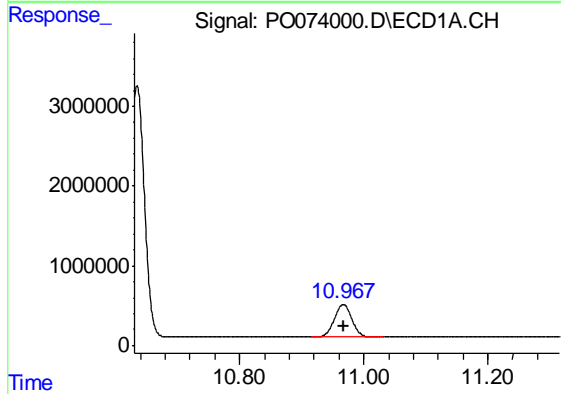
R.T.: 4.939 min
 Delta R.T.: -0.002 min
 Response: 2201165
 Conc: 24.08 ng/ml

Instrument :
 ECD_O
 ClientSampleId :
 S22-04-A



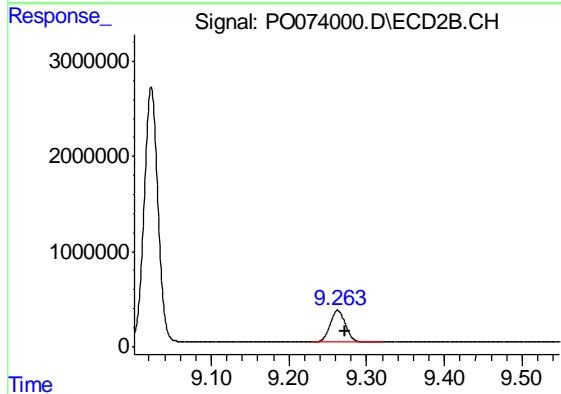
#1 Tetrachloro-m-xylene

R.T.: 3.998 min
 Delta R.T.: -0.005 min
 Response: 1312515
 Conc: 24.47 ng/ml



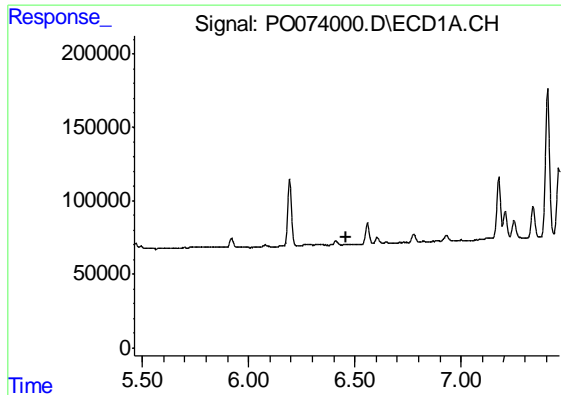
#2 Decachlorobiphenyl

R.T.: 10.967 min
 Delta R.T.: 0.000 min
 Response: 8024624
 Conc: 97.10 ng/ml



#2 Decachlorobiphenyl

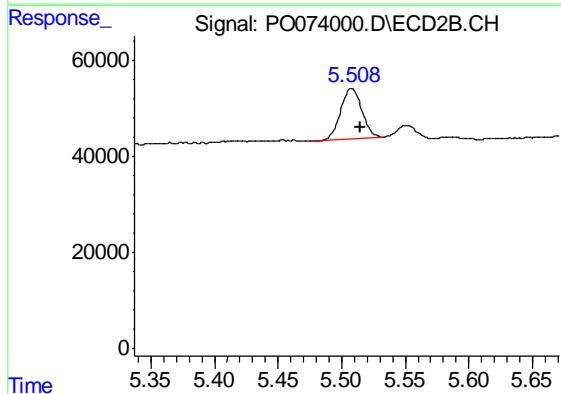
R.T.: 9.263 min
 Delta R.T.: -0.009 min
 Response: 4473390
 Conc: 95.60 ng/ml



#6 AR-1016-4

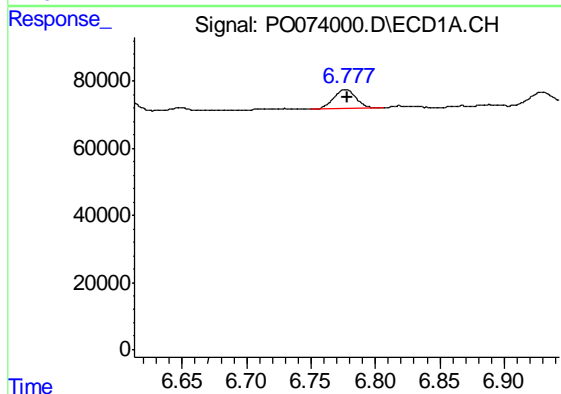
R.T.: 0.000 min
 Exp R.T. : 6.462 min
 Response: 0
 Conc: N.D.

Instrument :
 ECD_O
 ClientSampleId :
 S22-04-A



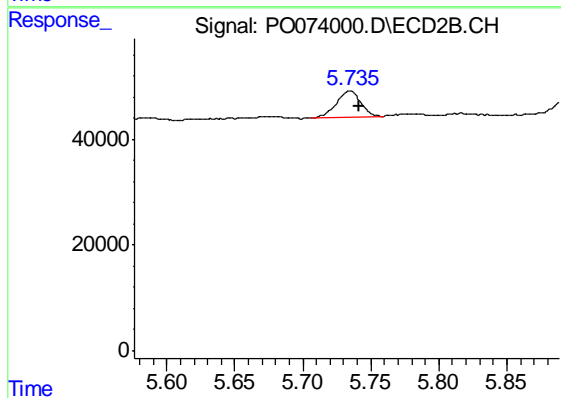
#6 AR-1016-4

R.T.: 5.508 min
 Delta R.T.: -0.007 min
 Response: 120275
 Conc: 91.21 ng/ml



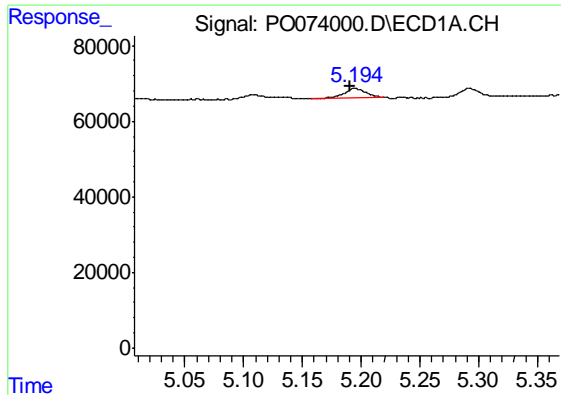
#7 AR-1016-5

R.T.: 6.778 min
 Delta R.T.: -0.001 min
 Response: 68668
 Conc: 28.92 ng/ml



#7 AR-1016-5

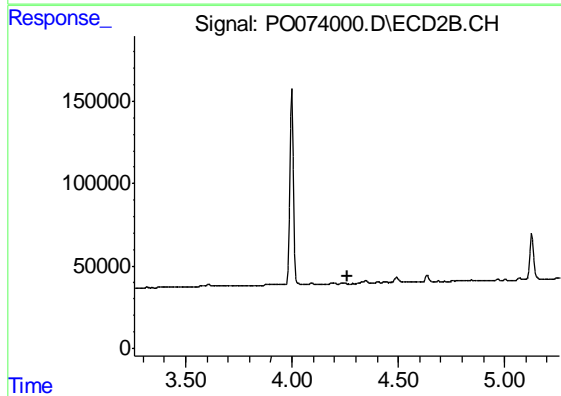
R.T.: 5.735 min
 Delta R.T.: -0.006 min
 Response: 62658
 Conc: 38.24 ng/ml



#8 AR-1221-1

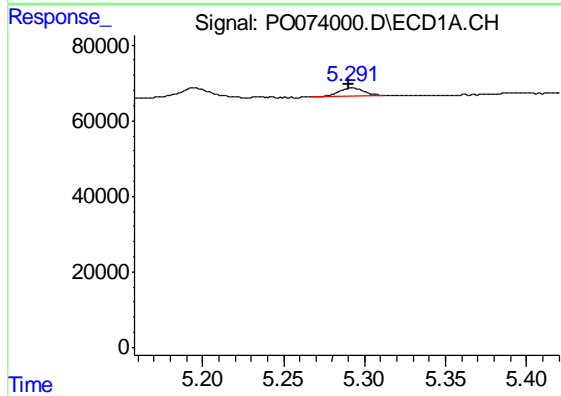
R.T.: 5.195 min
 Delta R.T.: 0.004 min
 Response: 31752
 Conc: 29.97 ng/ml

Instrument :
 ECD_O
 ClientSampled :
 S22-04-A



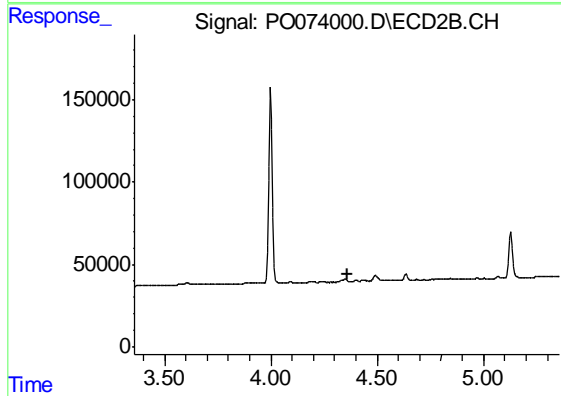
#8 AR-1221-1

R.T.: 0.000 min
 Exp R.T. : 4.259 min
 Response: 0
 Conc: N.D.



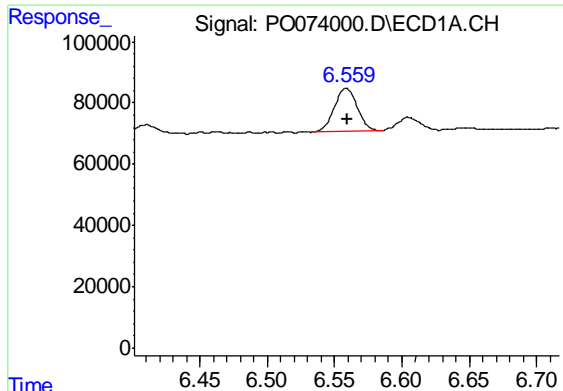
#9 AR-1221-2

R.T.: 5.292 min
 Delta R.T.: 0.002 min
 Response: 24204
 Conc: 30.81 ng/ml



#9 AR-1221-2

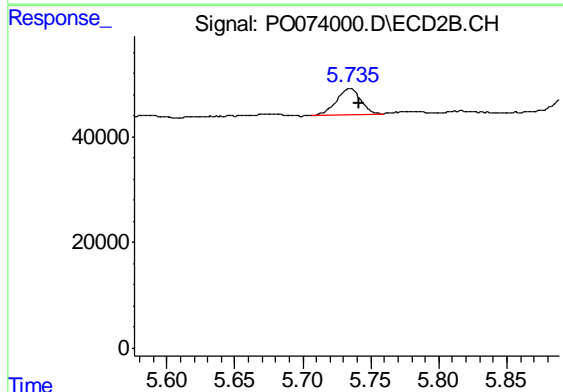
R.T.: 0.000 min
 Exp R.T. : 4.357 min
 Response: 0
 Conc: N.D.



#15 AR-1232-5

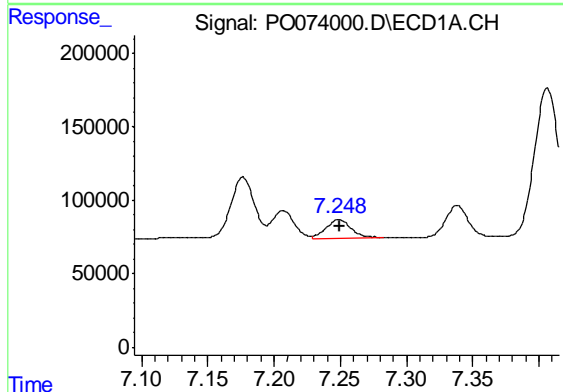
R.T.: 6.559 min
 Delta R.T.: 0.000 min
 Response: 171170
 Conc: 239.07 ng/ml

Instrument :
 ECD_O
 ClientSampleId :
 S22-04-A



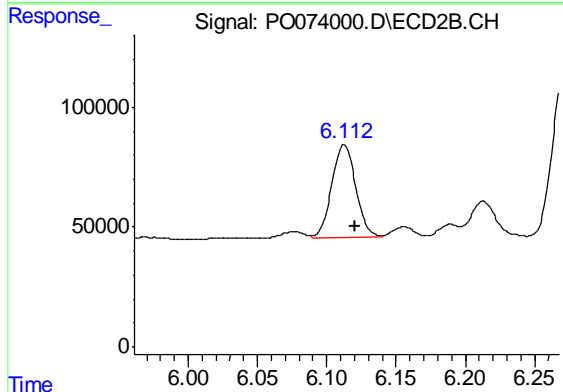
#15 AR-1232-5

R.T.: 5.735 min
 Delta R.T.: -0.006 min
 Response: 62658
 Conc: 93.75 ng/ml



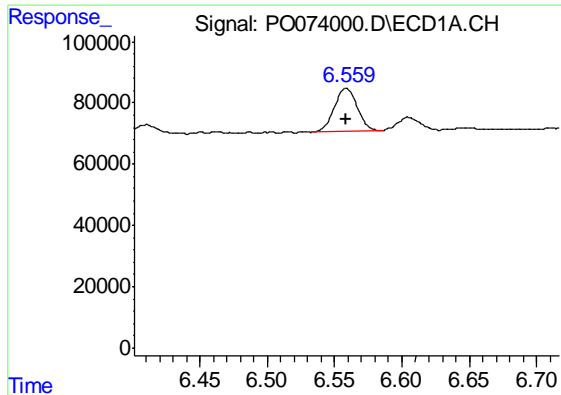
#20 AR-1242-5

R.T.: 7.249 min
 Delta R.T.: -0.001 min
 Response: 164650
 Conc: 75.39 ng/ml



#20 AR-1242-5

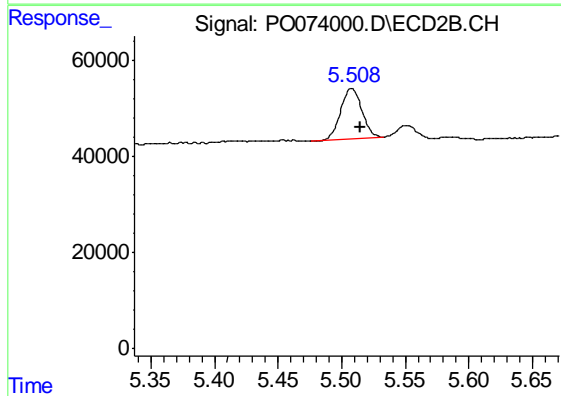
R.T.: 6.113 min
 Delta R.T.: -0.008 min
 Response: 470139
 Conc: 275.81 ng/ml



#22 AR-1248-2

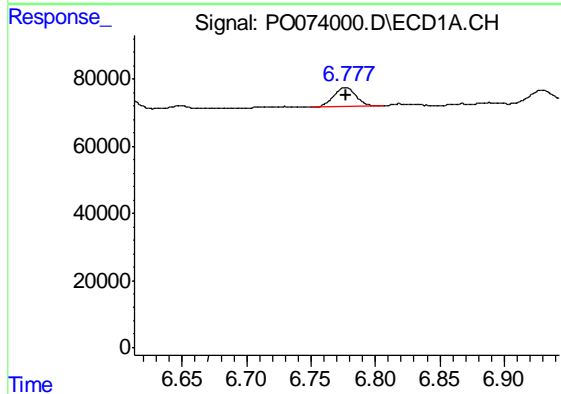
R.T.: 6.559 min
 Delta R.T.: 0.000 min
 Response: 171170
 Conc: 61.25 ng/ml

Instrument :
 ECD_O
 ClientSampleId :
 S22-04-A



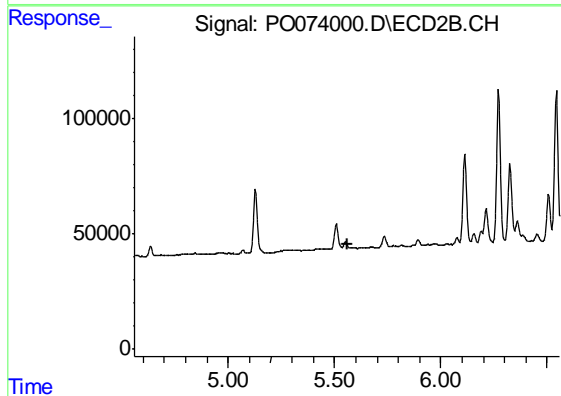
#22 AR-1248-2

R.T.: 5.508 min
 Delta R.T.: -0.006 min
 Response: 120275
 Conc: 64.82 ng/ml



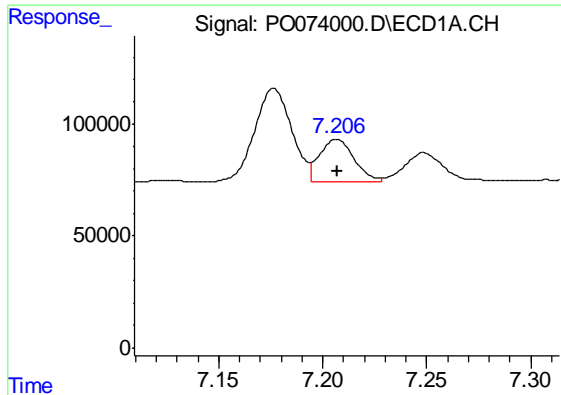
#23 AR-1248-3

R.T.: 6.778 min
 Delta R.T.: 0.000 min
 Response: 68668
 Conc: 20.97 ng/ml



#23 AR-1248-3

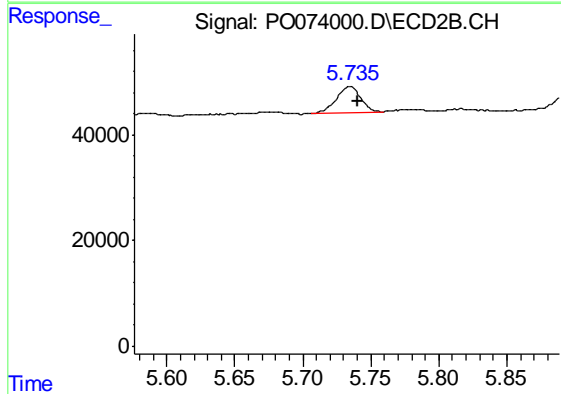
R.T.: 0.000 min
 Exp R.T. : 5.558 min
 Response: 0
 Conc: N.D.



#24 AR-1248-4

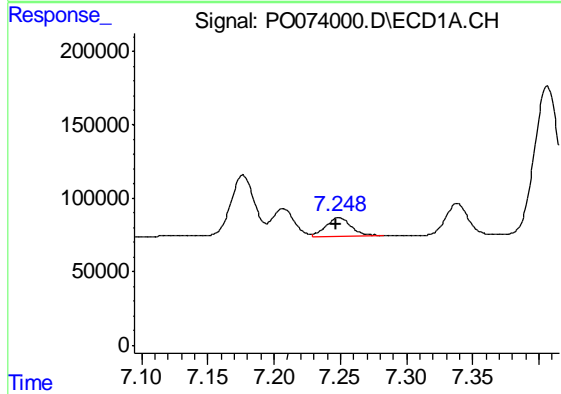
R.T.: 7.207 min
 Delta R.T.: 0.000 min
 Response: 222075
 Conc: 55.53 ng/ml

Instrument :
 ECD_O
 ClientSampleId :
 S22-04-A



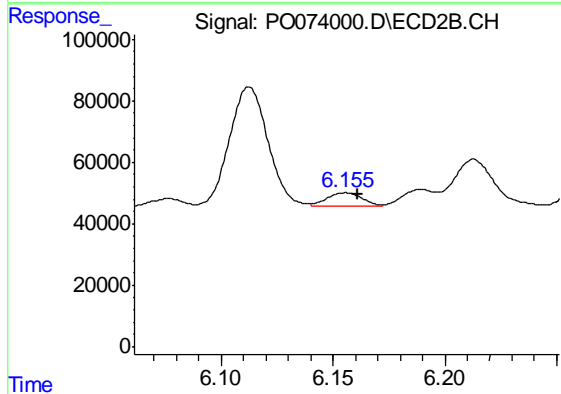
#24 AR-1248-4

R.T.: 5.735 min
 Delta R.T.: -0.006 min
 Response: 62658
 Conc: 27.84 ng/ml



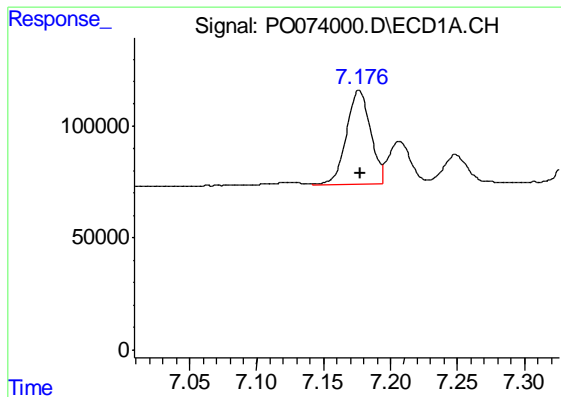
#25 AR-1248-5

R.T.: 7.249 min
 Delta R.T.: 0.001 min
 Response: 164650
 Conc: 43.54 ng/ml



#25 AR-1248-5

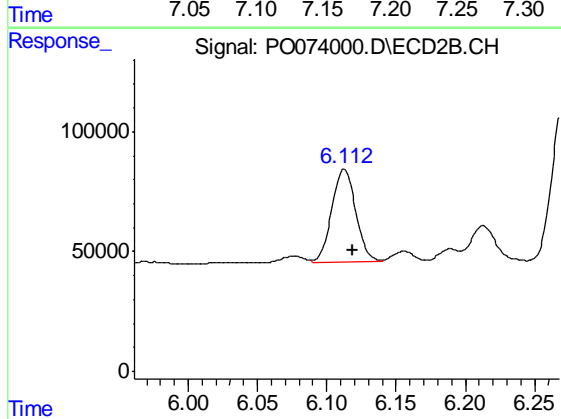
R.T.: 6.156 min
 Delta R.T.: -0.006 min
 Response: 47607
 Conc: 20.49 ng/ml



#26 AR-1254-1

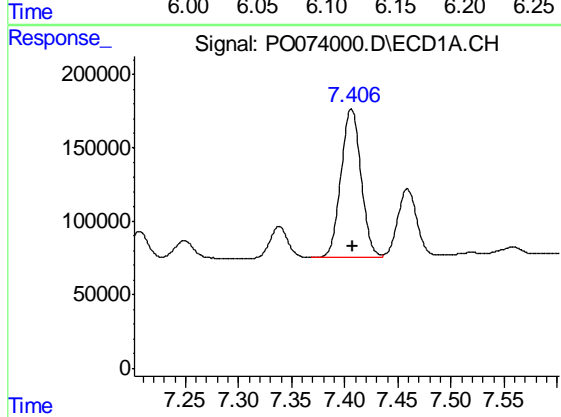
R.T.: 7.177 min
 Delta R.T.: 0.000 min
 Response: 526016
 Conc: 138.58 ng/ml

Instrument :
 ECD_O
 ClientSampleId :
 S22-04-A



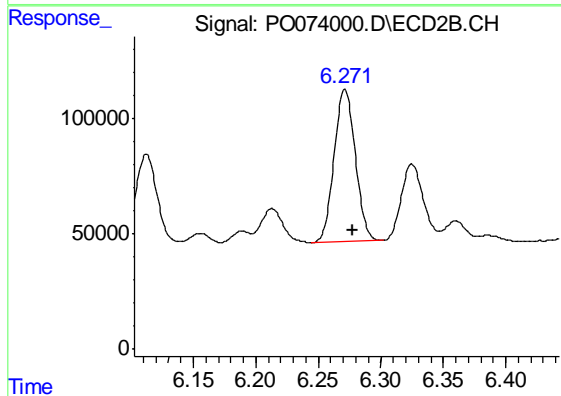
#26 AR-1254-1

R.T.: 6.113 min
 Delta R.T.: -0.006 min
 Response: 470139
 Conc: 133.03 ng/ml



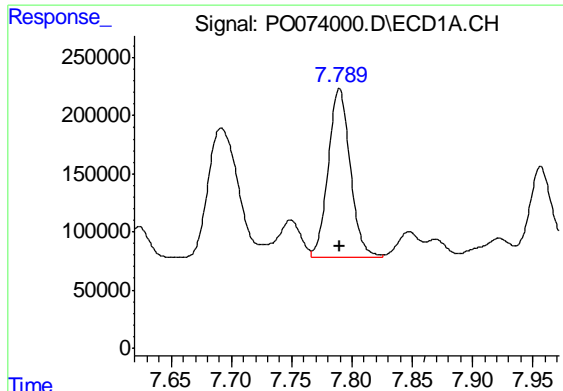
#27 AR-1254-2

R.T.: 7.406 min
 Delta R.T.: -0.001 min
 Response: 1330883
 Conc: 225.73 ng/ml



#27 AR-1254-2

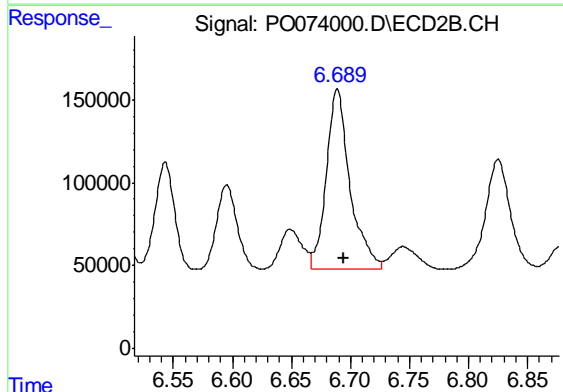
R.T.: 6.271 min
 Delta R.T.: -0.006 min
 Response: 783727
 Conc: 251.03 ng/ml



#28 AR-1254-3

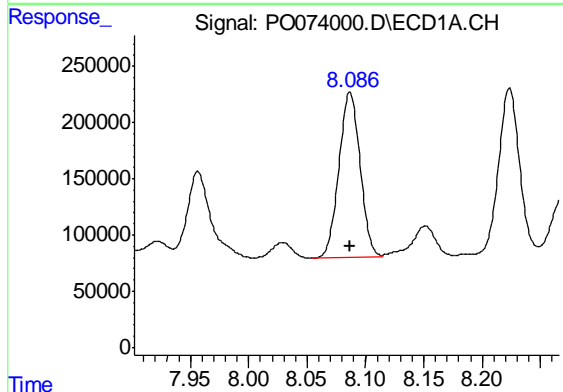
R.T.: 7.790 min
 Delta R.T.: 0.000 min
 Response: 1858114
 Conc: 303.26 ng/ml

Instrument :
 ECD_O
 ClientSampleId :
 S22-04-A



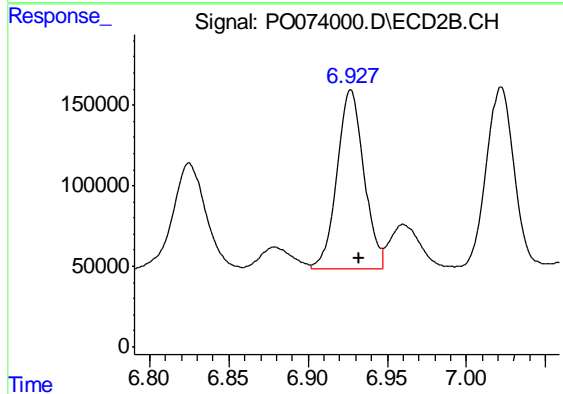
#28 AR-1254-3

R.T.: 6.689 min
 Delta R.T.: -0.005 min
 Response: 1522422
 Conc: 310.95 ng/ml



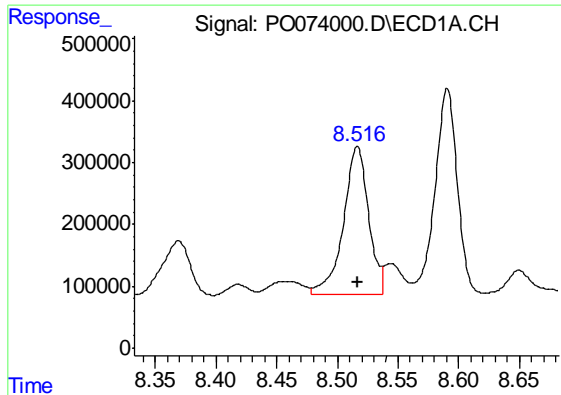
#29 AR-1254-4

R.T.: 8.087 min
 Delta R.T.: 0.000 min
 Response: 1857092
 Conc: 354.00 ng/ml



#29 AR-1254-4

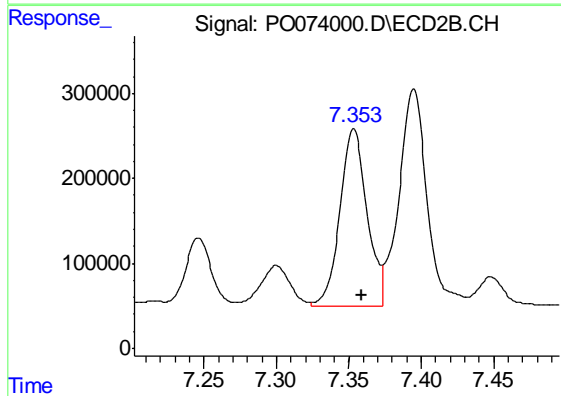
R.T.: 6.927 min
 Delta R.T.: -0.005 min
 Response: 1331489
 Conc: 379.66 ng/ml



#30 AR-1254-5

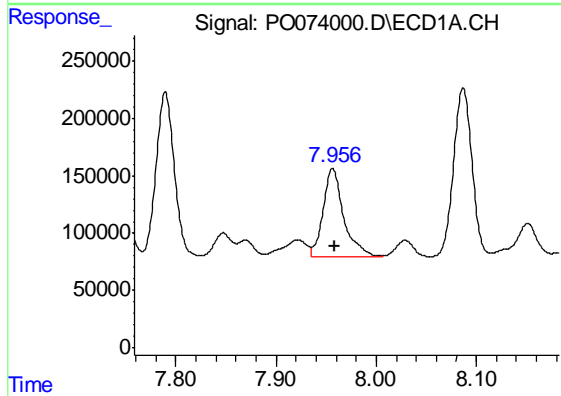
R.T.: 8.516 min
Delta R.T.: 0.000 min
Response: 3432308
Conc: 666.40 ng/ml

Instrument :
ECD_O
ClientSampled :
S22-04-A



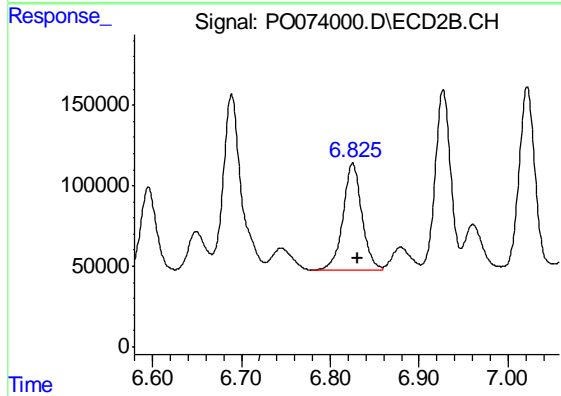
#30 AR-1254-5

R.T.: 7.353 min
Delta R.T.: -0.005 min
Response: 2724157
Conc: 617.77 ng/ml



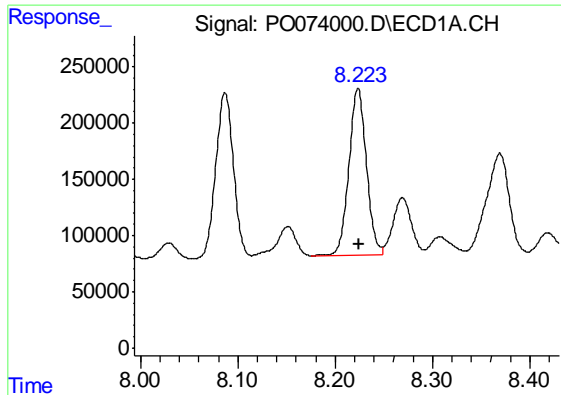
#31 AR-1260-1

R.T.: 7.956 min
Delta R.T.: -0.002 min
Response: 1112498
Conc: 263.22 ng/ml



#31 AR-1260-1

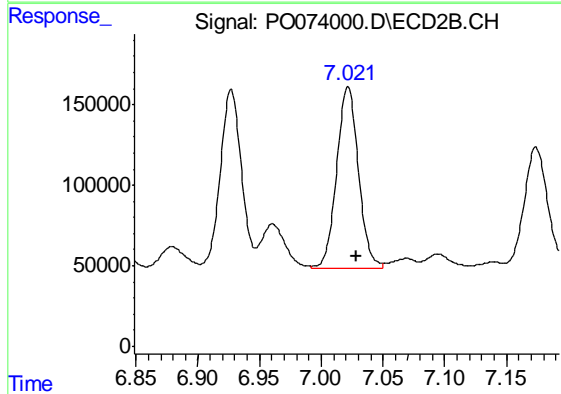
R.T.: 6.825 min
Delta R.T.: -0.006 min
Response: 964940
Conc: 312.15 ng/ml



#32 AR-1260-2

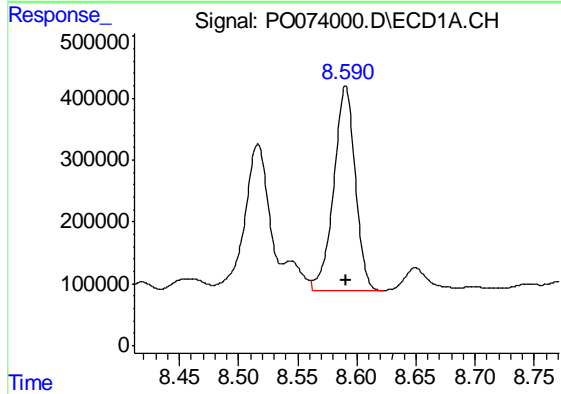
R.T.: 8.223 min
 Delta R.T.: -0.001 min
 Response: 1859824
 Conc: 331.06 ng/ml

Instrument :
 ECD_O
 ClientSampleId :
 S22-04-A



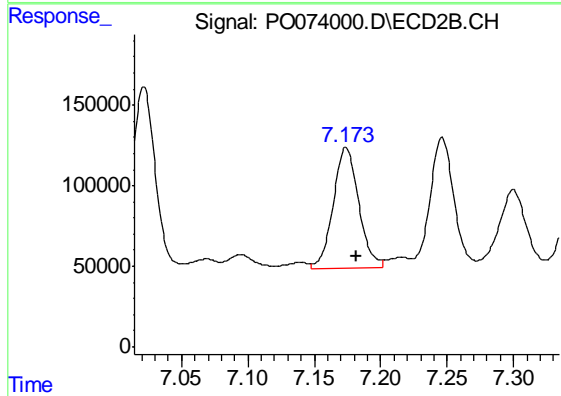
#32 AR-1260-2

R.T.: 7.022 min
 Delta R.T.: -0.006 min
 Response: 1389340
 Conc: 342.50 ng/ml



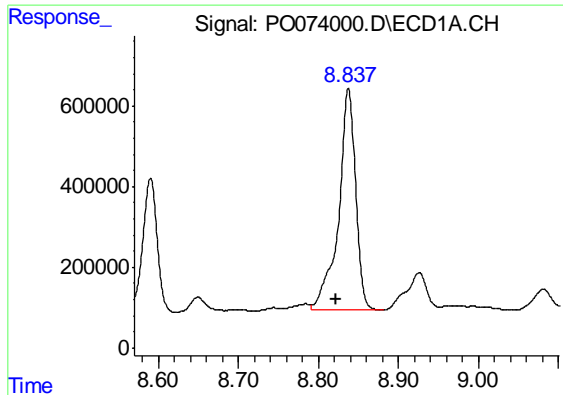
#33 AR-1260-3

R.T.: 8.591 min
 Delta R.T.: 0.000 min
 Response: 4186585
 Conc: 915.88 ng/ml



#33 AR-1260-3

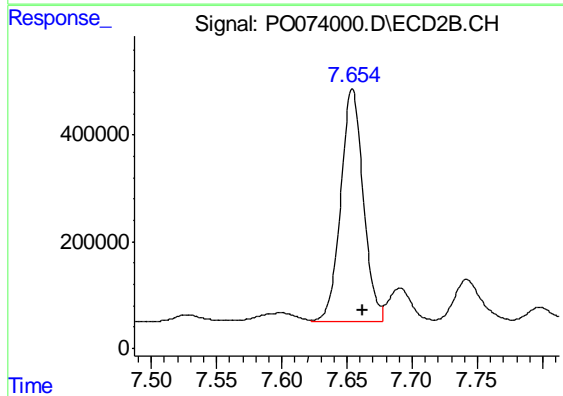
R.T.: 7.174 min
 Delta R.T.: -0.008 min
 Response: 1000430
 Conc: 286.63 ng/ml



#34 AR-1260-4

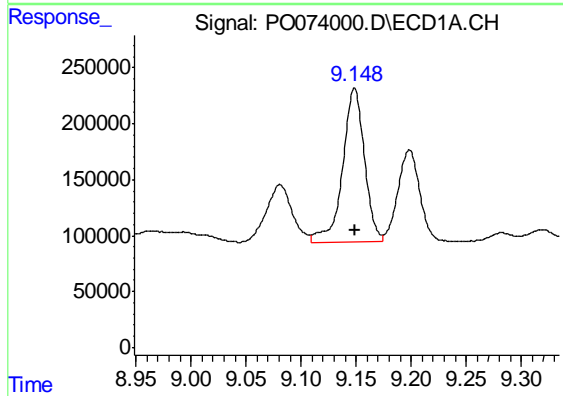
R.T.: 8.838 min
 Delta R.T.: 0.015 min
 Response: 8178236
 Conc: 1727.40 ng/ml

Instrument :
 ECD_O
 ClientSampleId :
 S22-04-A



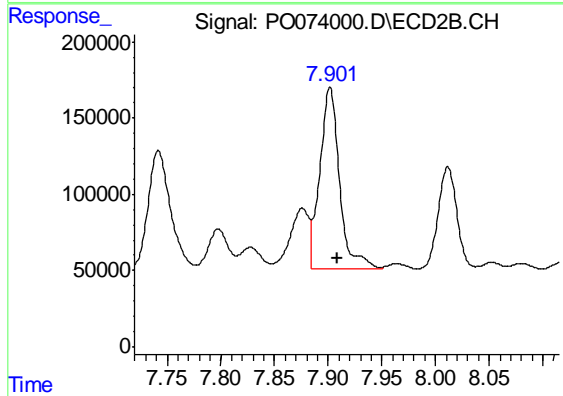
#34 AR-1260-4

R.T.: 7.654 min
 Delta R.T.: -0.008 min
 Response: 5259507
 Conc: 1741.71 ng/ml



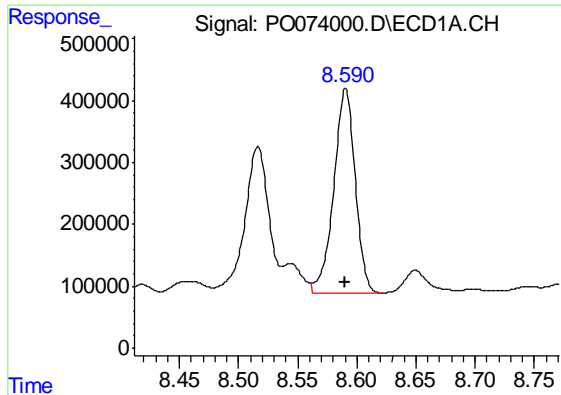
#35 AR-1260-5

R.T.: 9.148 min
 Delta R.T.: 0.000 min
 Response: 1903090
 Conc: 190.70 ng/ml



#35 AR-1260-5

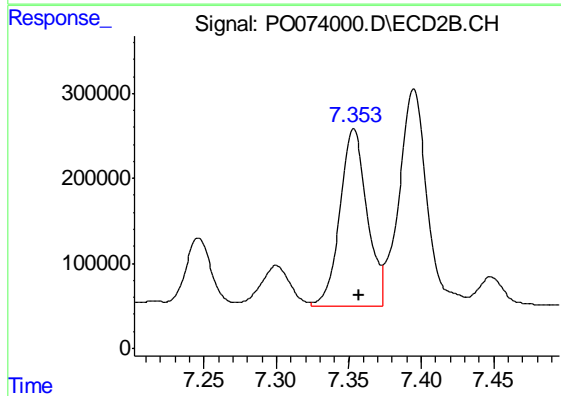
R.T.: 7.902 min
 Delta R.T.: -0.007 min
 Response: 1542926
 Conc: 206.55 ng/ml



#36 AR-1262-1

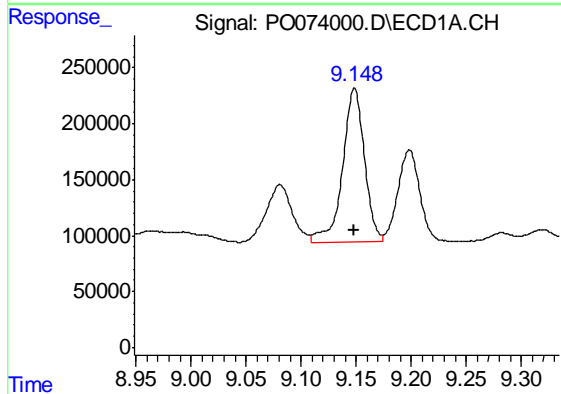
R.T.: 8.591 min
 Delta R.T.: 0.000 min
 Response: 4186585
 Conc: 559.24 ng/ml

Instrument :
 ECD_O
 ClientSampleId :
 S22-04-A



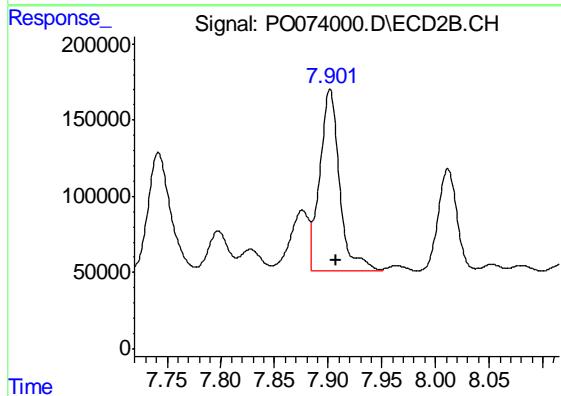
#36 AR-1262-1

R.T.: 7.353 min
 Delta R.T.: -0.004 min
 Response: 2724157
 Conc: 1089.75 ng/ml



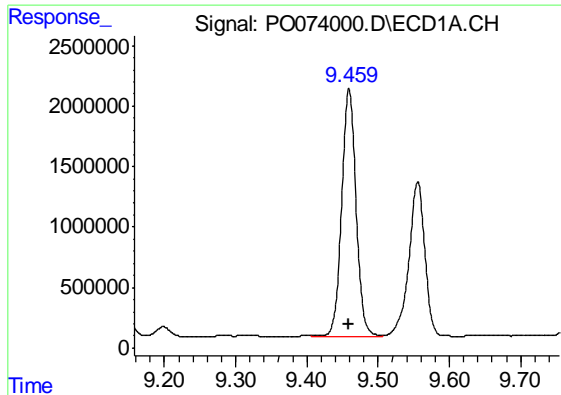
#37 AR-1262-2

R.T.: 9.148 min
 Delta R.T.: 0.000 min
 Response: 1903090
 Conc: 148.38 ng/ml



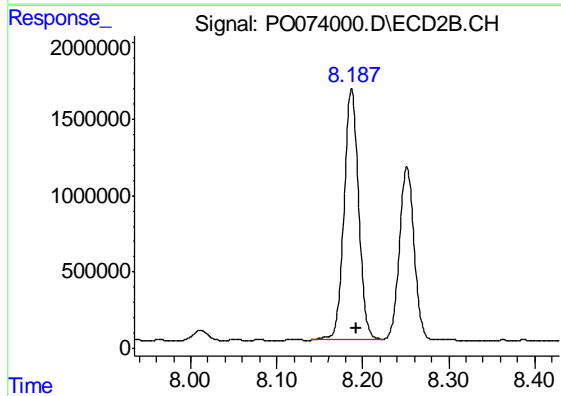
#37 AR-1262-2

R.T.: 7.902 min
 Delta R.T.: -0.005 min
 Response: 1542926
 Conc: 175.40 ng/ml

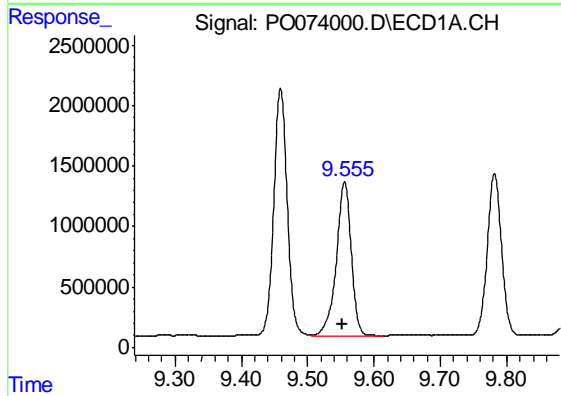


#38 AR-1262-3
 R.T.: 9.459 min
 Delta R.T.: 0.000 min
 Response: 28660930
 Conc: 3378.30 ng/ml

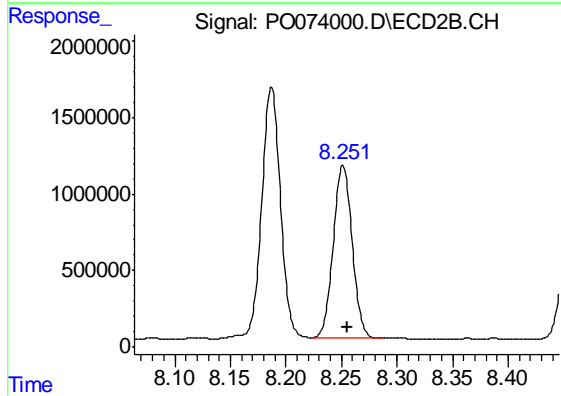
Instrument :
 ECD_O
 ClientSampleId :
 S22-04-A



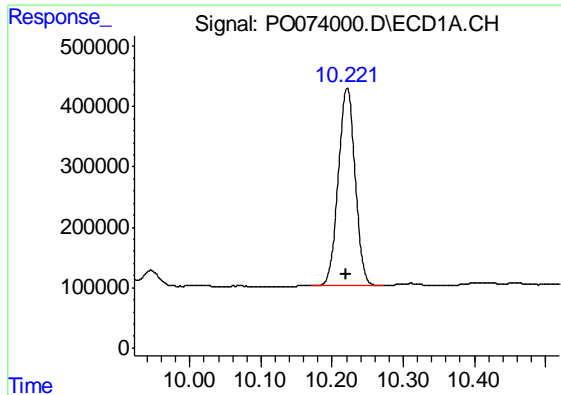
#38 AR-1262-3
 R.T.: 8.187 min
 Delta R.T.: -0.005 min
 Response: 19460982
 Conc: 5382.08 ng/ml



#39 AR-1262-4
 R.T.: 9.556 min
 Delta R.T.: 0.004 min
 Response: 19867846
 Conc: 5940.35 ng/ml



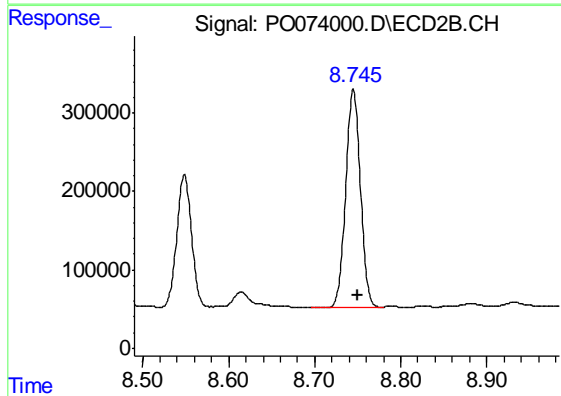
#39 AR-1262-4
 R.T.: 8.251 min
 Delta R.T.: -0.004 min
 Response: 13485793
 Conc: 2191.72 ng/ml



#40 AR-1262-5

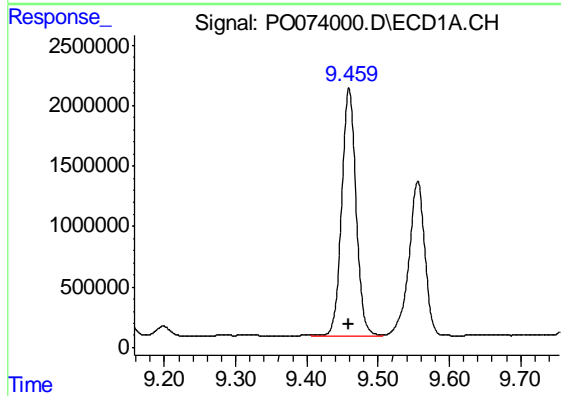
R.T.: 10.221 min
 Delta R.T.: 0.001 min
 Response: 5377527
 Conc: 1189.72 ng/ml

Instrument :
 ECD_O
 ClientSampleId :
 S22-04-A



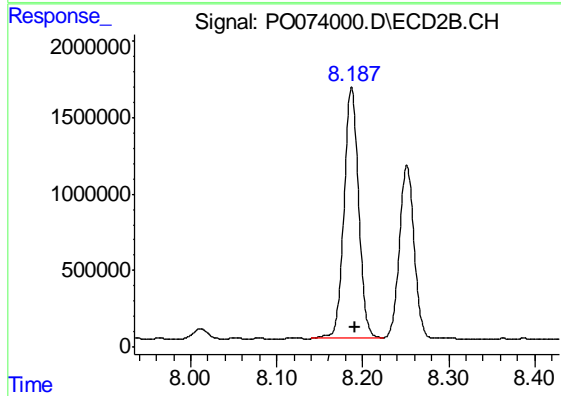
#40 AR-1262-5

R.T.: 8.745 min
 Delta R.T.: -0.005 min
 Response: 3300717
 Conc: 1159.38 ng/ml



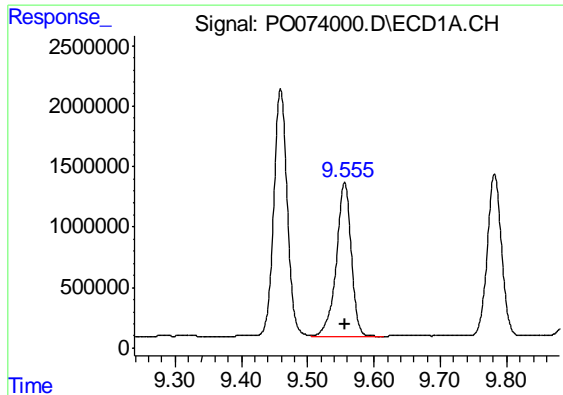
#41 AR-1268-1

R.T.: 9.459 min
 Delta R.T.: 0.000 min
 Response: 28660930
 Conc: 2012.26 ng/ml



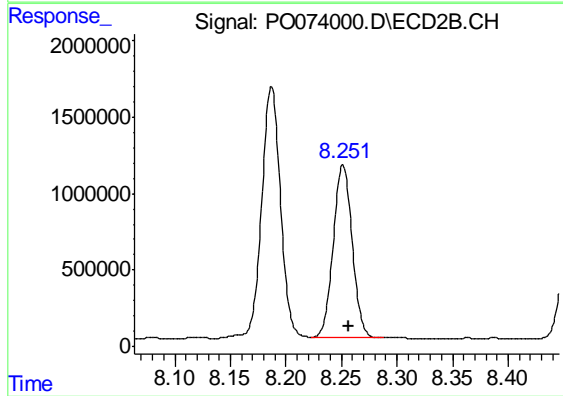
#41 AR-1268-1

R.T.: 8.187 min
 Delta R.T.: -0.005 min
 Response: 19460982
 Conc: 2022.23 ng/ml

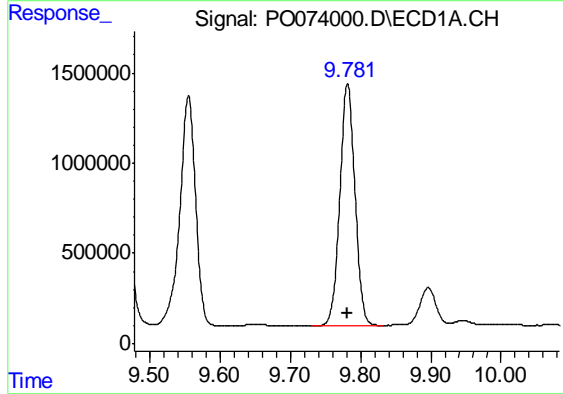


#42 AR-1268-2
 R.T.: 9.556 min
 Delta R.T.: 0.000 min
 Response: 19867846
 Conc: 1611.73 ng/ml

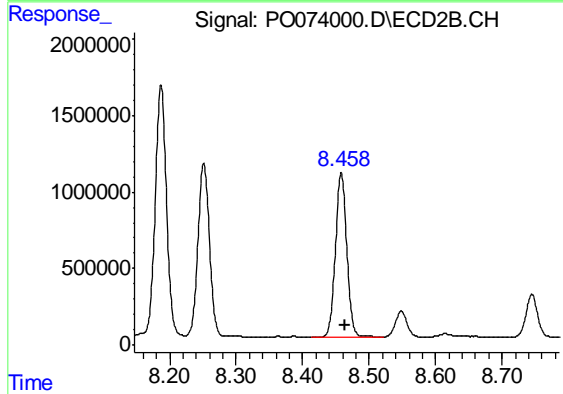
Instrument :
 ECD_O
 ClientSampleId :
 S22-04-A



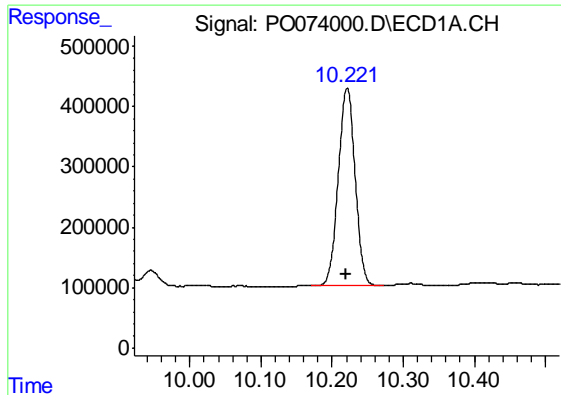
#42 AR-1268-2
 R.T.: 8.251 min
 Delta R.T.: -0.005 min
 Response: 13485793
 Conc: 1636.90 ng/ml



#43 AR-1268-3
 R.T.: 9.782 min
 Delta R.T.: 0.000 min
 Response: 19915807
 Conc: 1835.03 ng/ml



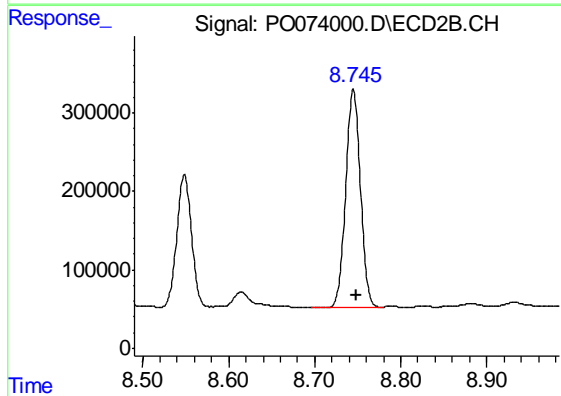
#43 AR-1268-3
 R.T.: 8.458 min
 Delta R.T.: -0.005 min
 Response: 12781046
 Conc: 1810.12 ng/ml



#44 AR-1268-4

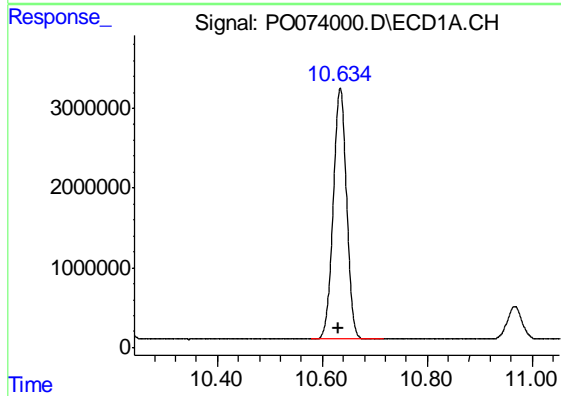
R.T.: 10.221 min
Delta R.T.: 0.002 min
Response: 5377527
Conc: 1147.94 ng/ml

Instrument :
ECD_O
ClientSampleId :
S22-04-A



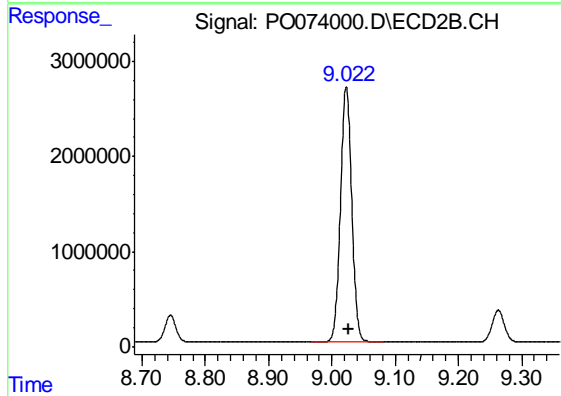
#44 AR-1268-4

R.T.: 8.745 min
Delta R.T.: -0.003 min
Response: 3300717
Conc: 1115.10 ng/ml



#45 AR-1268-5

R.T.: 10.635 min
Delta R.T.: 0.003 min
Response: 55770267
Conc: 1704.15 ng/ml



#45 AR-1268-5

R.T.: 9.023 min
Delta R.T.: -0.005 min
Response: 33040191
Conc: 1644.60 ng/ml