

Data Path : Z:\pestpcbsrv\HPCHEM1\ECD\_0\Data\PO122121\  
 Data File : PO083912.D  
 Signal(s) : Signal #1: ECD1A.CH Signal #2: ECD2B.CH  
 Acq On : 21 Dec 2021 17:29  
 Operator : AJ\MA  
 Sample : AR1660CCC500  
 Misc :  
 ALS Vial : 3 Sample Multiplier: 1

Instrument :  
 ECD\_0  
 ClientSampleId :  
 AR1660CCC500

Integration File signal 1: autoint1.e  
 Integration File signal 2: autoint2.e  
 Quant Time: Dec 21 17:47:26 2021  
 Quant Method : Z:\pestpcbsrv\HPCHEM1\ECD\_0\methods\PO121521.M  
 Quant Title : GC EXTRACTABLES  
 QLast Update : Thu Dec 16 04:05:27 2021  
 Response via : Initial Calibration  
 Integrator: ChemStation 6890 Scale Mode: Small noise peaks clipped

Volume Inj. : 2 µl  
 Signal #1 Phase : ZB-MR1 Signal #2 Phase: ZB-MR2  
 Signal #1 Info : 30Mx0.32mmx 0.50µ Signal #2 Info : 30M x 0.32mm x 0.25µm

Compound	RT#1	RT#2	Resp#1	Resp#2	ng/ml	ng/ml
-----						
System Monitoring Compounds						
1) SA Tetrachlo...	4.947	3.940	5135593	1478653	53.906	50.409
2) SA Decachlor...	11.028	9.240	4020689	1500262	58.701	53.430
Target Compounds						
3) L1 AR-1016-1	6.281	5.195	1687143	611290	530.126	496.806
4) L1 AR-1016-2	6.304	5.215	2294637	852141	504.210m	496.244
5) L1 AR-1016-3	6.371	5.406	1450828	470291	533.377	516.695
6) L1 AR-1016-4	6.479	5.459	1199297	390303	540.070	528.371
7) L1 AR-1016-5	6.796	5.688	1157055	474123	544.880	522.912
31) L7 AR-1260-1	7.978	6.785	1764386	885503	544.528	528.315
32) L7 AR-1260-2	8.246f	6.985	2204883	1088594	569.241	527.213
33) L7 AR-1260-3	8.614	7.138	1630218	998211	550.310	563.876
34) L7 AR-1260-4	8.845	7.622	1893032	847222	553.416	574.991
35) L7 AR-1260-5	9.177f	7.873	3656495	2111455	542.699	545.587

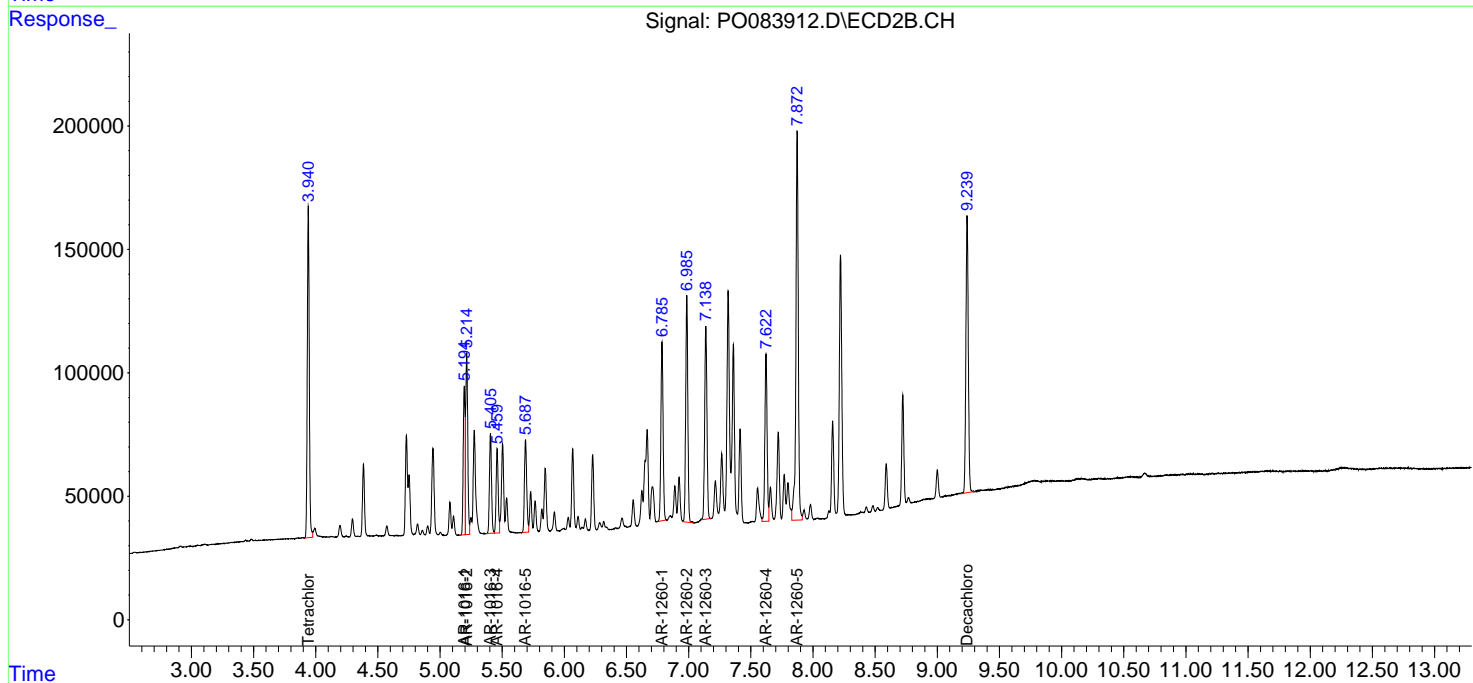
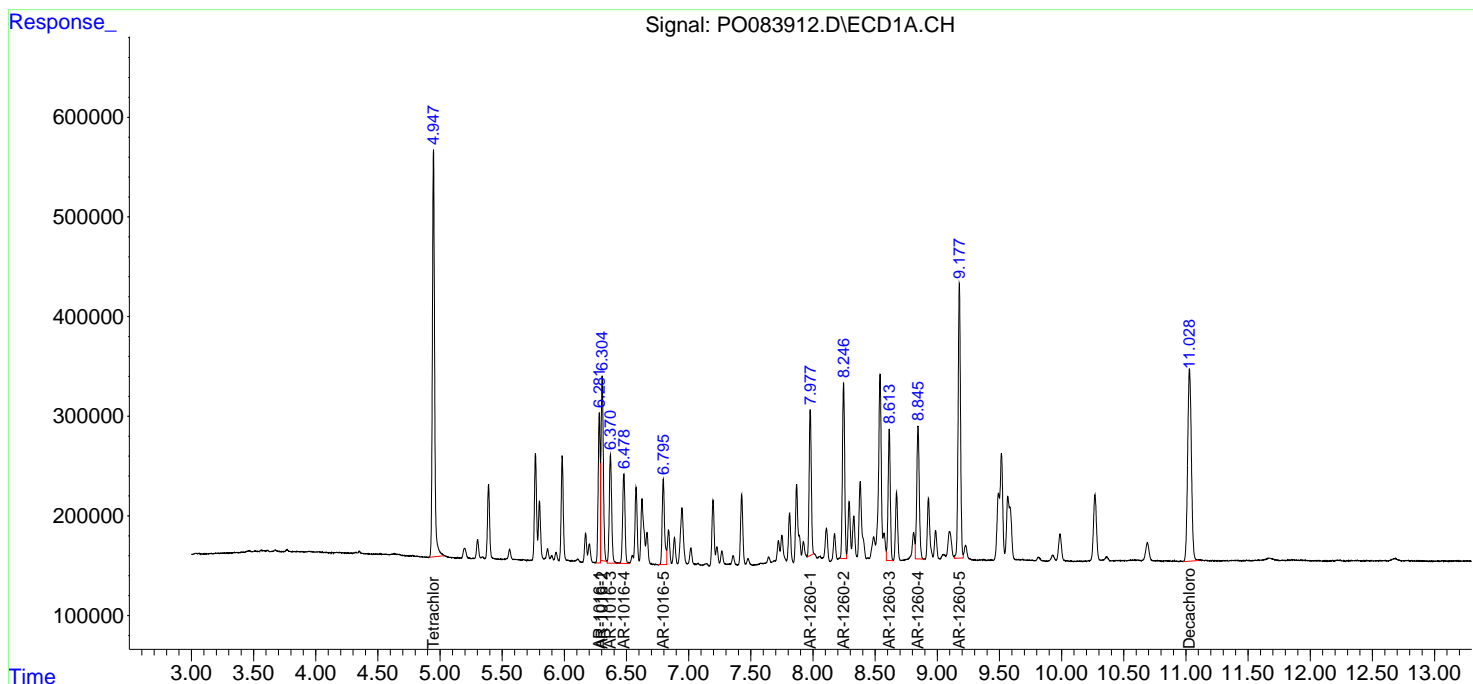
(f)=RT Delta > 1/2 Window (#)=Amounts differ by > 25% (m)=manual int.

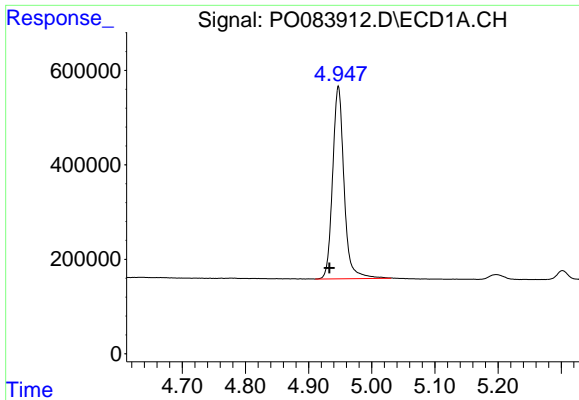
Data Path : Z:\pestpcbsrv\HPCHEM1\ECD\_O\Data\PO122121\  
 Data File : PO083912.D  
 Signal(s) : Signal #1: ECD1A.CH Signal #2: ECD2B.CH  
 Acq On : 21 Dec 2021 17:29  
 Operator : AJ\MA  
 Sample : AR1660CCC500  
 Misc :  
 ALS Vial : 3 Sample Multiplier: 1

Instrument :  
 ECD\_O  
 ClientSampleId :  
 AR1660CCC500

Integration File signal 1: autoint1.e  
 Integration File signal 2: autoint2.e  
 Quant Time: Dec 21 17:47:26 2021  
 Quant Method : Z:\pestpcbsrv\HPCHEM1\ECD\_O\methods\PO121521.M  
 Quant Title : GC EXTRACTABLES  
 QLast Update : Thu Dec 16 04:05:27 2021  
 Response via : Initial Calibration  
 Integrator: ChemStation 6890 Scale Mode: Small noise peaks clipped

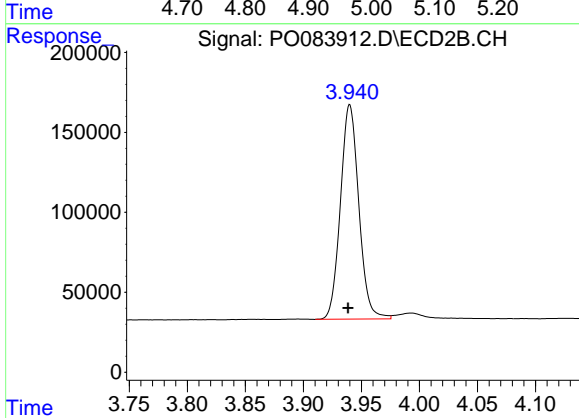
Volume Inj. : 2 µl  
 Signal #1 Phase : ZB-MR1 Signal #2 Phase: ZB-MR2  
 Signal #1 Info : 30Mx0.32mmx 0.50µ Signal #2 Info : 30M x 0.32mm x 0.25µm



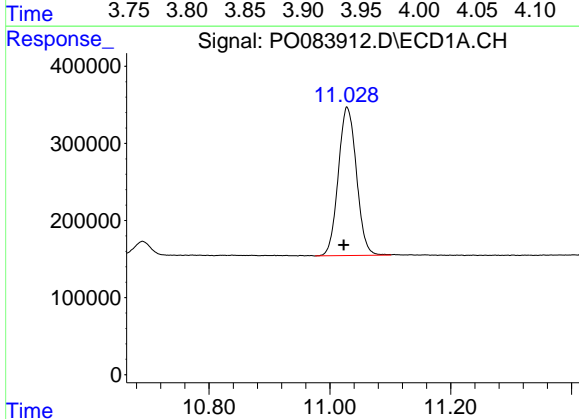


#1 Tetrachloro-m-xylene  
 R.T.: 4.947 min  
 Delta R.T.: 0.014 min  
 Response: 5135593  
 Conc: 53.91 ng/ml

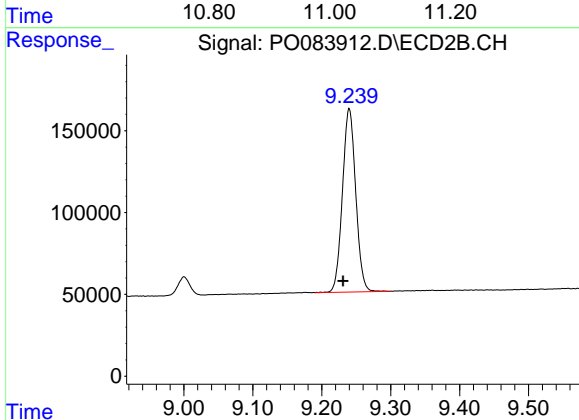
Instrument :  
 ECD\_O  
 ClientSampleId :  
 AR1660CCC500



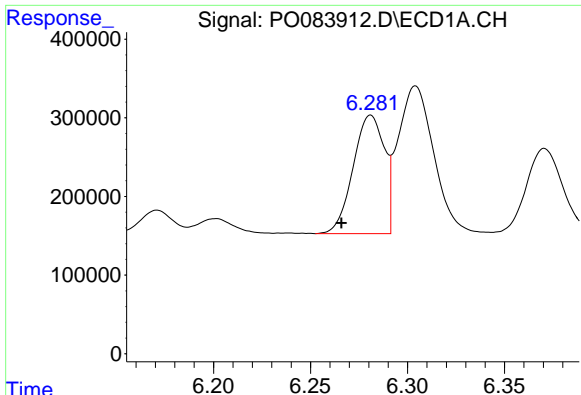
#1 Tetrachloro-m-xylene  
 R.T.: 3.940 min  
 Delta R.T.: 0.001 min  
 Response: 1478653  
 Conc: 50.41 ng/ml



#2 Decachlorobiphenyl  
 R.T.: 11.028 min  
 Delta R.T.: 0.005 min  
 Response: 4020689  
 Conc: 58.70 ng/ml



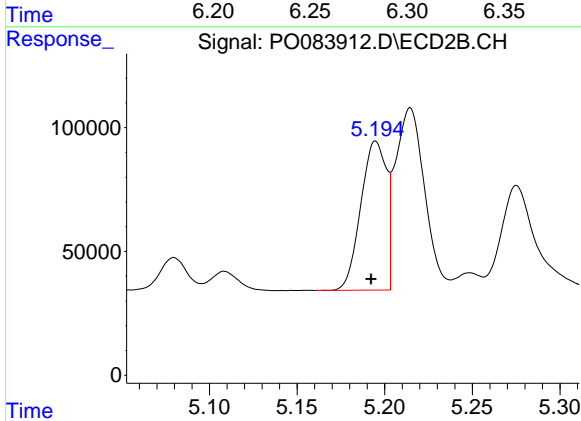
#2 Decachlorobiphenyl  
 R.T.: 9.240 min  
 Delta R.T.: 0.009 min  
 Response: 1500262  
 Conc: 53.43 ng/ml



#3 AR-1016-1

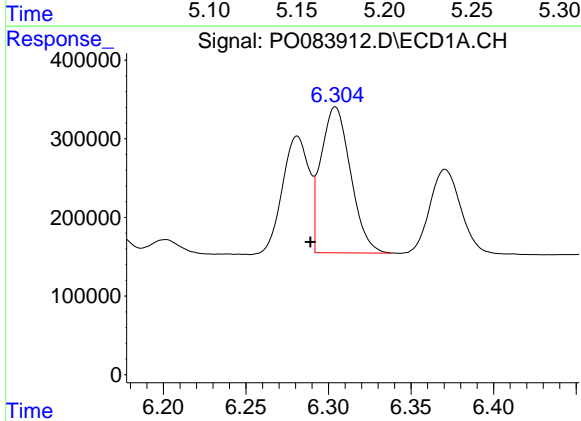
R.T.: 6.281 min  
 Delta R.T.: 0.015 min  
 Response: 1687143  
 Conc: 530.13 ng/ml

Instrument :  
 ECD\_O  
 ClientSampleId :  
 AR1660CCC500



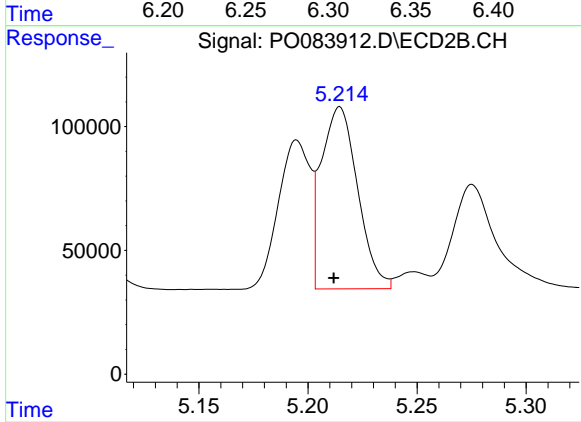
#3 AR-1016-1

R.T.: 5.195 min  
 Delta R.T.: 0.003 min  
 Response: 611290  
 Conc: 496.81 ng/ml



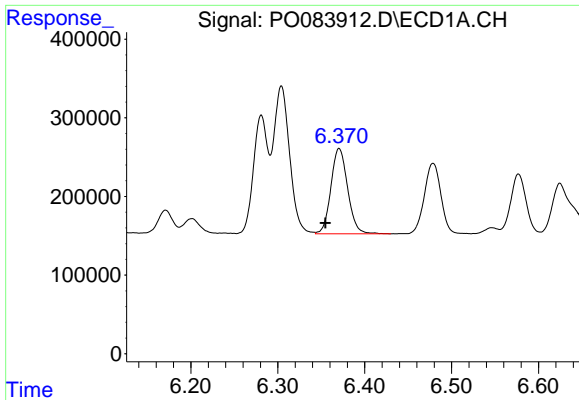
#4 AR-1016-2

R.T.: 6.304 min  
 Delta R.T.: 0.015 min  
 Response: 2294637  
 Conc: 504.21 ng/ml m



#4 AR-1016-2

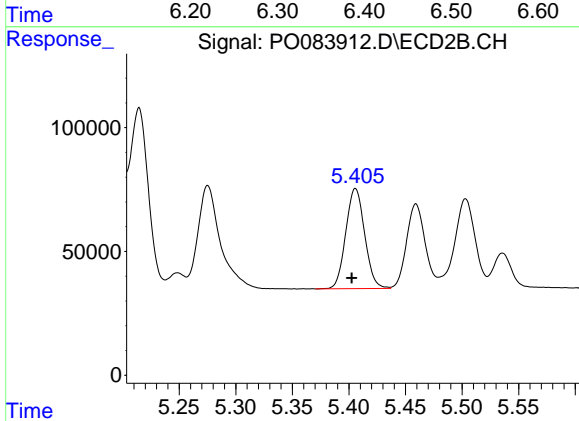
R.T.: 5.215 min  
 Delta R.T.: 0.003 min  
 Response: 852141  
 Conc: 496.24 ng/ml



#5 AR-1016-3

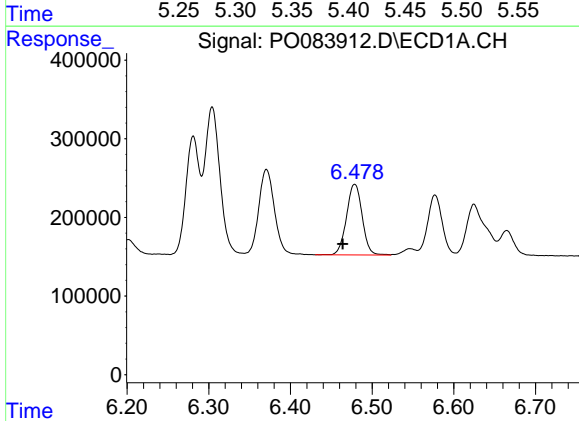
R.T.: 6.371 min  
 Delta R.T.: 0.016 min  
 Response: 1450828  
 Conc: 533.38 ng/ml

Instrument :  
 ECD\_O  
 ClientSampleId :  
 AR1660CCC500



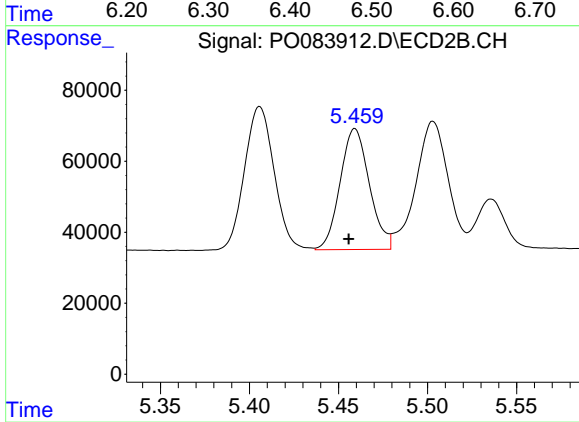
#5 AR-1016-3

R.T.: 5.406 min  
 Delta R.T.: 0.003 min  
 Response: 470291  
 Conc: 516.69 ng/ml



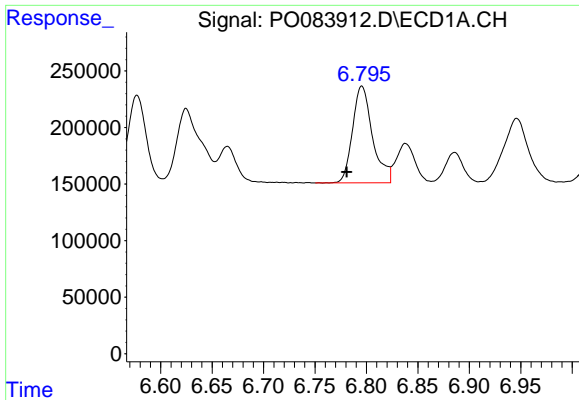
#6 AR-1016-4

R.T.: 6.479 min  
 Delta R.T.: 0.015 min  
 Response: 1199297  
 Conc: 540.07 ng/ml



#6 AR-1016-4

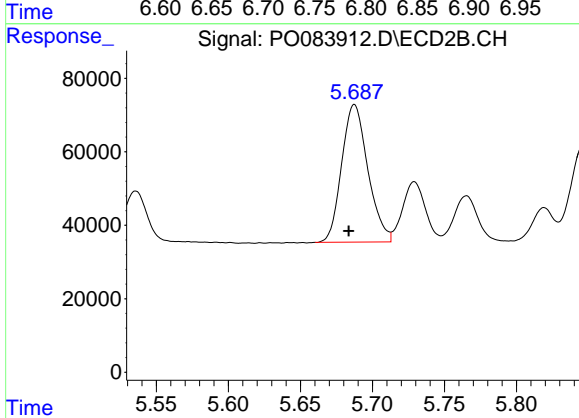
R.T.: 5.459 min  
 Delta R.T.: 0.003 min  
 Response: 390303  
 Conc: 528.37 ng/ml



#7 AR-1016-5

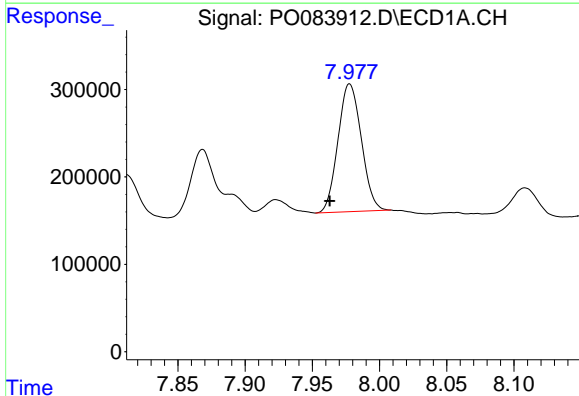
R.T.: 6.796 min  
 Delta R.T.: 0.015 min  
 Response: 1157055  
 Conc: 544.88 ng/ml

Instrument :  
 ECD\_O  
 ClientSampleId :  
 AR1660CCC500



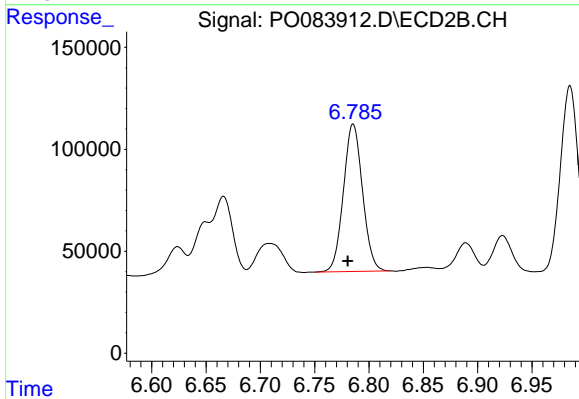
#7 AR-1016-5

R.T.: 5.688 min  
 Delta R.T.: 0.004 min  
 Response: 474123  
 Conc: 522.91 ng/ml



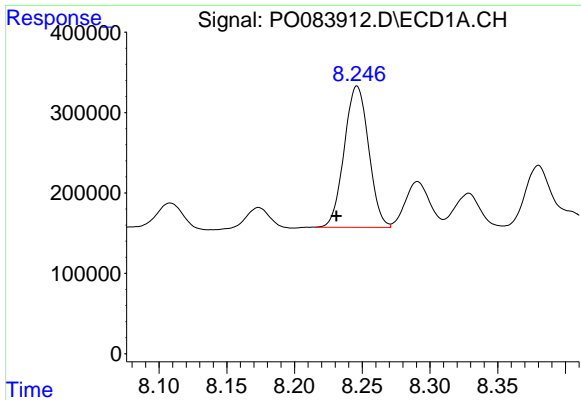
#31 AR-1260-1

R.T.: 7.978 min  
 Delta R.T.: 0.015 min  
 Response: 1764386  
 Conc: 544.53 ng/ml



#31 AR-1260-1

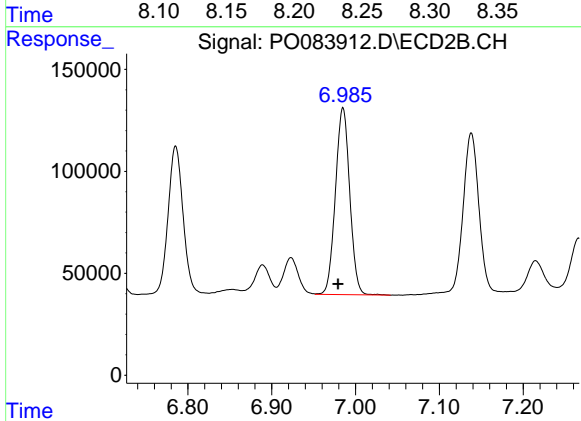
R.T.: 6.785 min  
 Delta R.T.: 0.005 min  
 Response: 885503  
 Conc: 528.31 ng/ml



#32 AR-1260-2

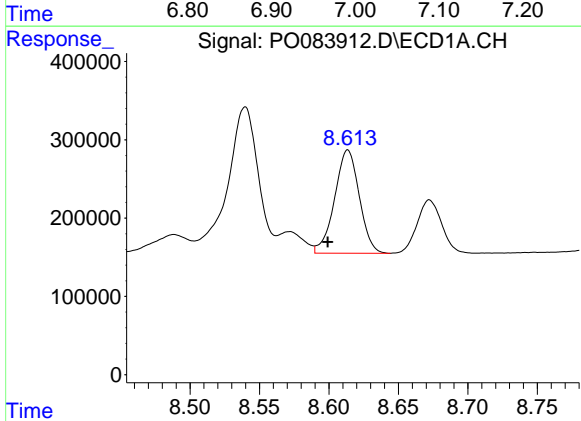
R.T.: 8.246 min  
 Delta R.T.: 0.015 min  
 Response: 2204883  
 Conc: 569.24 ng/ml

Instrument :  
 ECD\_O  
 ClientSampleId :  
 AR1660CCC500



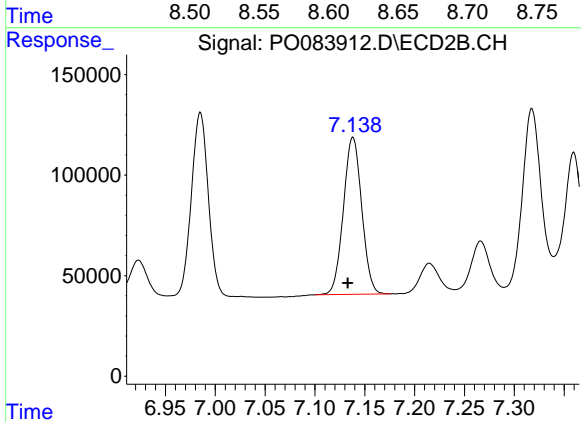
#32 AR-1260-2

R.T.: 6.985 min  
 Delta R.T.: 0.006 min  
 Response: 1088594  
 Conc: 527.21 ng/ml



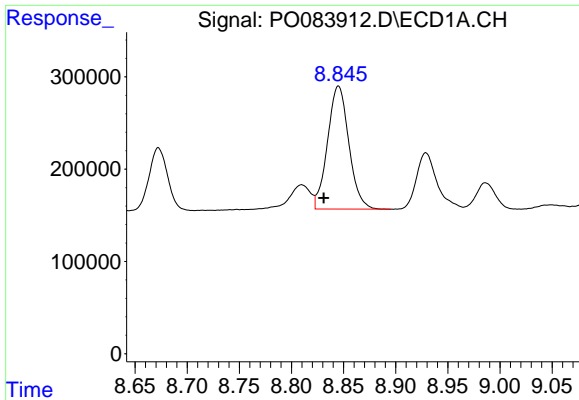
#33 AR-1260-3

R.T.: 8.614 min  
 Delta R.T.: 0.015 min  
 Response: 1630218  
 Conc: 550.31 ng/ml



#33 AR-1260-3

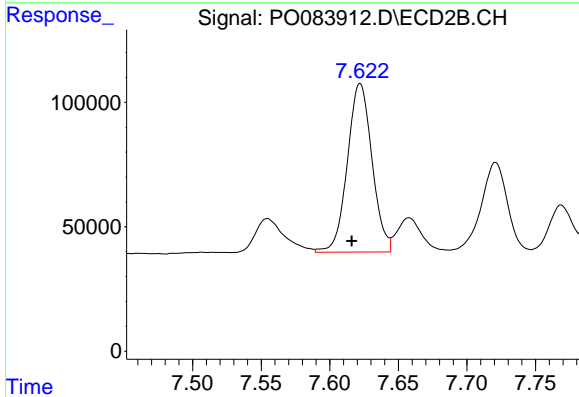
R.T.: 7.138 min  
 Delta R.T.: 0.005 min  
 Response: 998211  
 Conc: 563.88 ng/ml



#34 AR-1260-4

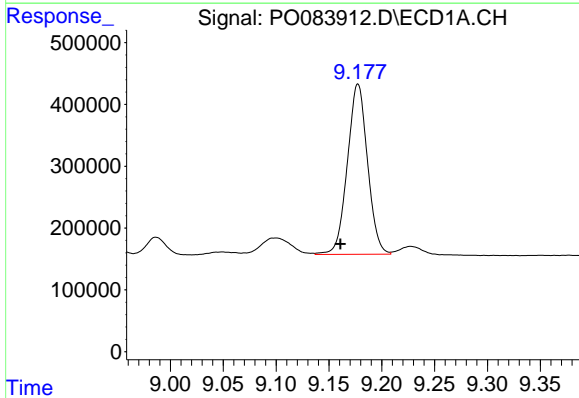
R.T.: 8.845 min  
 Delta R.T.: 0.014 min  
 Response: 1893032  
 Conc: 553.42 ng/ml

Instrument :  
 ECD\_O  
 ClientSampleId :  
 AR1660CCC500



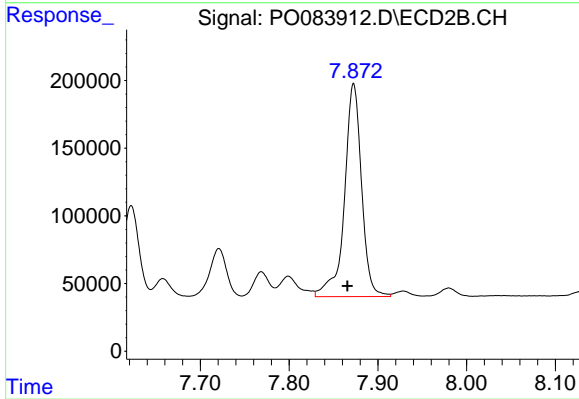
#34 AR-1260-4

R.T.: 7.622 min  
 Delta R.T.: 0.006 min  
 Response: 847222  
 Conc: 574.99 ng/ml



#35 AR-1260-5

R.T.: 9.177 min  
 Delta R.T.: 0.016 min  
 Response: 3656495  
 Conc: 542.70 ng/ml



#35 AR-1260-5

R.T.: 7.873 min  
 Delta R.T.: 0.007 min  
 Response: 2111455  
 Conc: 545.59 ng/ml