

Data Path : Z:\pestpcbsrv\HPCHEM1\ECD_0\Data\P0122123\
 Data File : P0100666.D
 Signal(s) : Signal #1: ECD1A.ch Signal #2: ECD2B.ch
 Acq On : 22 Dec 2023 02:04
 Operator : YP/AJ
 Sample : AR1254CCC500
 Misc :
 ALS Vial : 6 Sample Multiplier: 1

Instrument :
 ECD_0
 ClientSampleId :

Integration File signal 1: autoint1.e
 Integration File signal 2: autoint2.e
 Quant Time: Dec 22 03:07:29 2023
 Quant Method : Z:\pestpcbsrv\HPCHEM1\ECD_0\methods\P0122023.M
 Quant Title : GC EXTRACTABLES
 QLast Update : Thu Dec 21 04:28:19 2023
 Response via : Initial Calibration
 Integrator: ChemStation

Volume Inj. : 2 µl
 Signal #1 Phase : ZB-MR1 Signal #2 Phase: ZB-MR2
 Signal #1 Info : 30Mx0.32mmx 0.50µ Signal #2 Info : 30M x 0.32mm x 0.25µm

Compound	RT#1	RT#2	Resp#1	Resp#2	ng/ml	ng/ml

System Monitoring Compounds						
1) SA Tetrachlo...	4.350	3.647	165.7E6	107.9E6	53.114	52.812
2) SA Decachlor...	10.088	8.706	114.9E6	83626534	55.003	55.405
Target Compounds						
3) L1 AR-1016-1	5.517	4.741	1630227	1182422	18.994	19.107
4) L1 AR-1016-2	5.542	4.760	2113403	1029158	16.556	11.672 #
5) L1 AR-1016-3	5.602	4.939	970336	850310	12.304	18.202 #
6) L1 AR-1016-4	5.699	4.980	820026	24558818	13.457	598.440 #
7) L1 AR-1016-5	5.996	5.196	18476880	16888809	301.838	325.117
8) L2 AR-1221-1	4.557	3.867	372845	264364	10.086	10.527
9) L2 AR-1221-2	4.655	3.948	2614657	2030473	94.150	105.741
10) L2 AR-1221-3	4.720	4.022	1071600	531238	12.839	9.027 #
11) L3 AR-1232-1	4.720	4.022	1071600	531238	16.073	11.235 #
12) L3 AR-1232-2	5.249	4.760	976421	1029158	27.851	24.674
13) L3 AR-1232-3	5.542	4.939	2113403	850310	35.421	39.635
14) L3 AR-1232-4	5.699	5.021	820026	8490647	29.907	399.618 #
15) L3 AR-1232-5	5.792	5.196	33580066	16888809	1396.669	772.817 #
16) L4 AR-1242-1	5.517	4.741	1630227	1182422	23.114	22.640
17) L4 AR-1242-2	5.542	4.760	2113403	1029158	20.135	14.200 #
18) L4 AR-1242-3	5.602	4.939	970336	850310	14.927	22.192 #
19) L4 AR-1242-4	5.699	5.021	820026	8490647	16.375	203.703 #
20) L4 AR-1242-5	6.442	5.552	16513517	55841511	319.060	1216.733 #
21) L5 AR-1248-1	5.517	4.741	1630227	1182422	29.716	29.569
22) L5 AR-1248-2	5.792	4.980	33580066	24558818	388.805	408.207
23) L5 AR-1248-3	5.996	5.021	18476880	8490647	210.507	135.830 #
24) L5 AR-1248-4	6.400	5.196	23763221	16888809	264.309	234.467
25) L5 AR-1248-5	6.442	5.592	16513517	7373880	183.973	119.527 #
26) L6 AR-1254-1	6.374	5.552	52618705	55841511	500.565	544.106
27) L6 AR-1254-2	6.594	5.700	77032444	49426351	521.683	537.995
28) L6 AR-1254-3	6.960	6.108	74768763	73938336	533.956	546.727
29) L6 AR-1254-4	7.247	6.338	49030539	41400976	576.743	573.967
30) L6 AR-1254-5	7.667	6.758	60057808	65218657	507.560	566.018
31) L7 AR-1260-1	7.125	6.239	29520276	36665222	215.481	384.922 #
32) L7 AR-1260-2	7.383	6.427	31631422	28439838	251.504	264.596
33) L7 AR-1260-3	7.728	6.582	8404186	29430273	86.762	287.133 #
34) L7 AR-1260-4	7.957	7.058	19909285	3235348	188.667	39.685 #
35) L7 AR-1260-5	8.287	7.299	11763668	7513307	55.728	41.630 #
36) L8 AR-1262-1	7.667	6.758	60057808	65218657	601.180	1045.530 #
37) L8 AR-1262-2	8.287	7.058	11763668	3235348	49.571	28.630 #
38) L8 AR-1262-3	8.611	7.587	8926263	275855	54.964	3.582 #
39) L8 AR-1262-4	8.659	7.648	4554893	6365550	35.328	43.089
40) L8 AR-1262-5	9.337	8.147	403436	670876	5.057	10.490 #
41) L9 AR-1268-1	8.611	7.587	8926263	275855	31.591	1.244 #

Data Path : Z:\pestpcbsrv\HPCHEM1\ECD_0\Data\P0122123\
 Data File : P0100666.D
 Signal(s) : Signal #1: ECD1A.ch Signal #2: ECD2B.ch
 Acq On : 22 Dec 2023 02:04
 Operator : YP/AJ
 Sample : AR1254CCC500
 Misc :
 ALS Vial : 6 Sample Multiplier: 1

Instrument :
 ECD_0
 ClientSampleId :

Integration File signal 1: autoint1.e
 Integration File signal 2: autoint2.e
 Quant Time: Dec 22 03:07:29 2023
 Quant Method : Z:\pestpcbsrv\HPCHEM1\ECD_0\methods\P0122023.M
 Quant Title : GC EXTRACTABLES
 QLast Update : Thu Dec 21 04:28:19 2023
 Response via : Initial Calibration
 Integrator: ChemStation

Volume Inj. : 2 µl
 Signal #1 Phase : ZB-MR1 Signal #2 Phase: ZB-MR2
 Signal #1 Info : 30Mx0.32mmx 0.50µ Signal #2 Info : 30M x 0.32mm x 0.25µm

	Compound	RT#1	RT#2	Resp#1	Resp#2	ng/ml	ng/ml
42)	L9 AR-1268-2	8.659	7.648	4554893	6365550	18.024	31.472 #
43)	L9 AR-1268-3	8.954f	7.856	142530	1627325	0.625	8.625 #
44)	L9 AR-1268-4	9.337	8.147	403436	670876	5.152	9.992 #
45)	L9 AR-1268-5	9.756	8.444	342062	928262	0.477	1.789 #

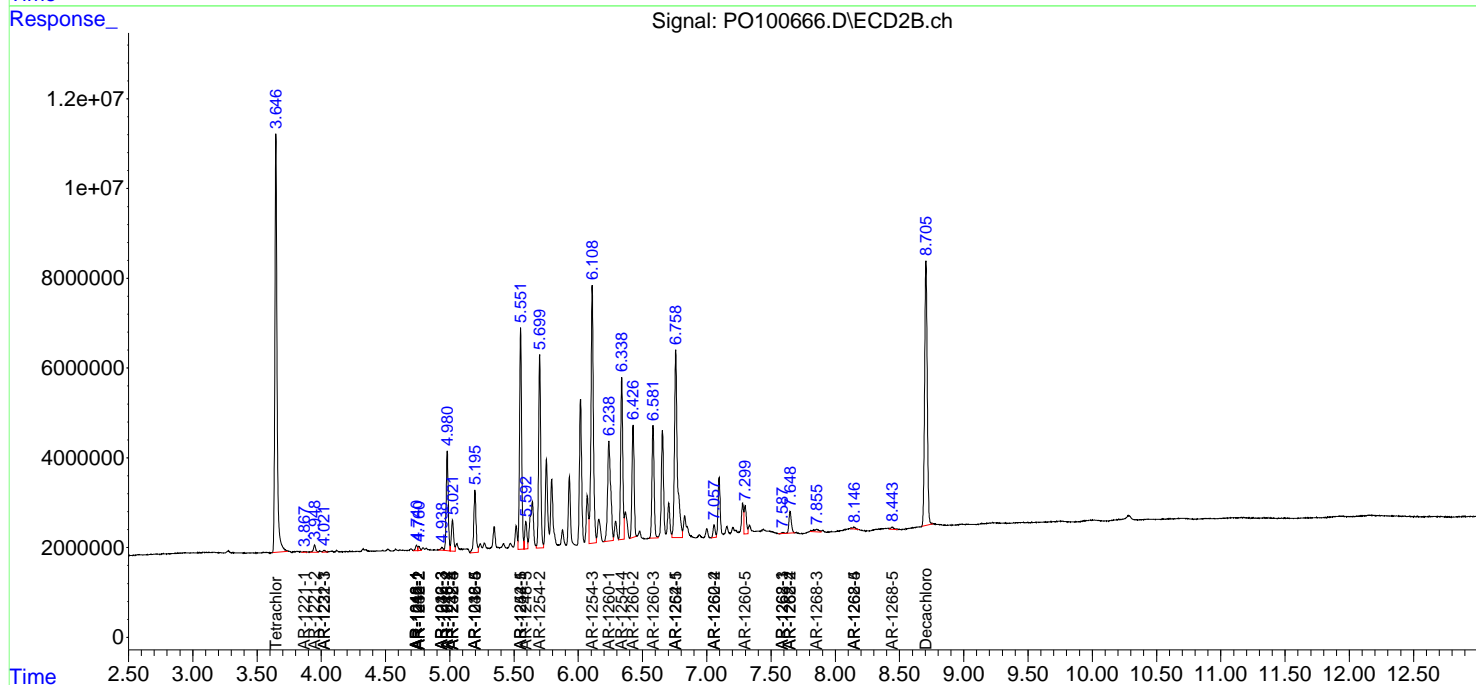
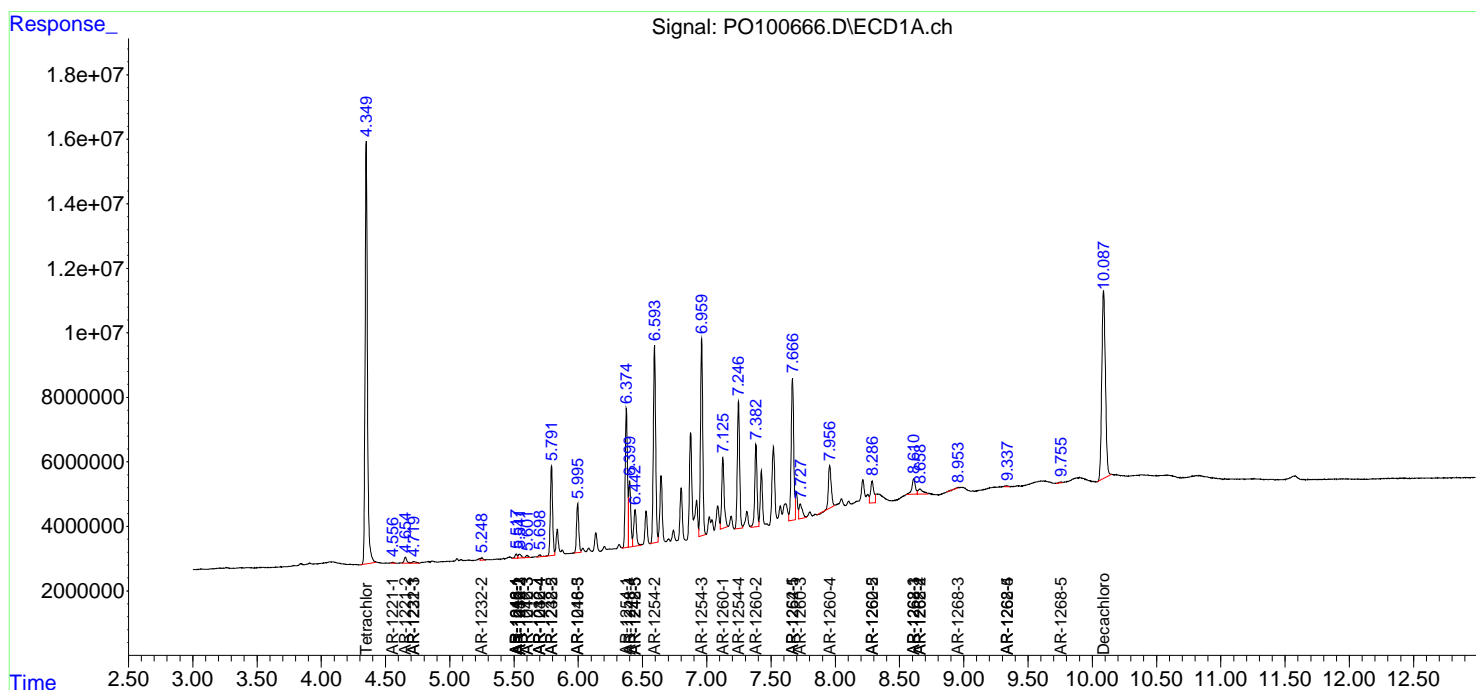
(f)=RT Delta > 1/2 Window (#)=Amounts differ by > 25% (m)=manual int.

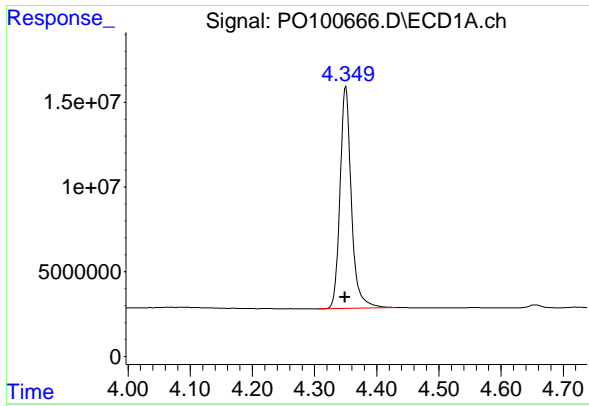
Data Path : Z:\pestpcbsrv\HPCHEM1\ECD_O\Data\PO122123\
 Data File : PO100666.D
 Signal(s) : Signal #1: ECD1A.ch Signal #2: ECD2B.ch
 Acq On : 22 Dec 2023 02:04
 Operator : YP/AJ
 Sample : AR1254CCC500
 Misc :
 ALS Vial : 6 Sample Multiplier: 1

Instrument :
 ECD_O
 ClientSampleId :

Integration File signal 1: autoint1.e
 Integration File signal 2: autoint2.e
 Quant Time: Dec 22 03:07:29 2023
 Quant Method : Z:\pestpcbsrv\HPCHEM1\ECD_O\methods\PO122023.M
 Quant Title : GC EXTRACTABLES
 QLast Update : Thu Dec 21 04:28:19 2023
 Response via : Initial Calibration
 Integrator: ChemStation

Volume Inj. : 2 µl
 Signal #1 Phase : ZB-MR1 Signal #2 Phase: ZB-MR2
 Signal #1 Info : 30Mx0.32mmx 0.50µ Signal #2 Info : 30M x 0.32mm x 0.25µm

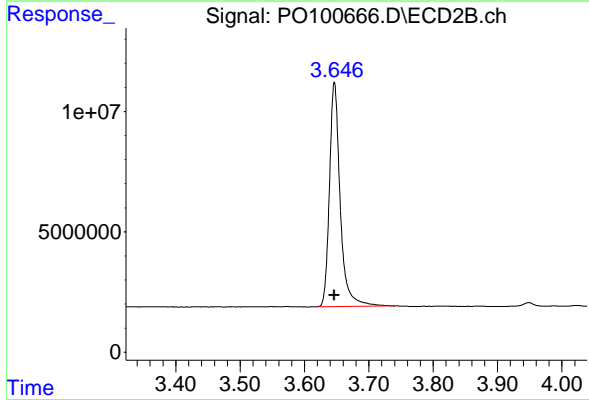




#1 Tetrachloro-m-xylene

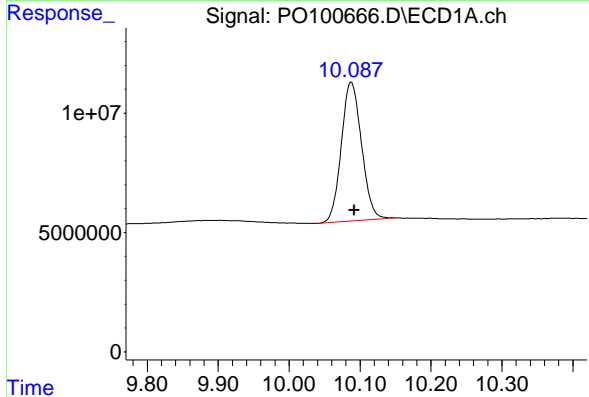
R.T.: 4.350 min
 Delta R.T.: 0.001 min
 Response: 165730872
 Conc: 53.11 ng/ml

Instrument :
 ECD_O
 ClientSampleId :



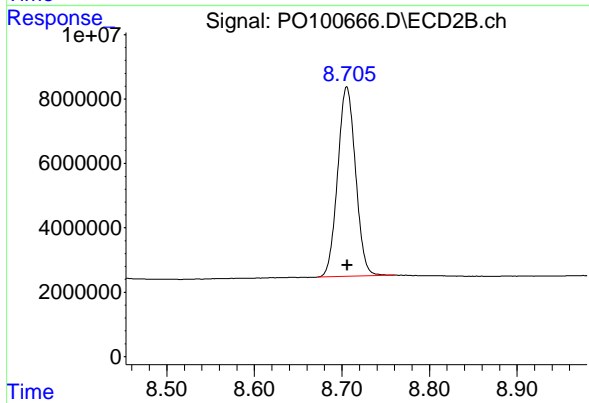
#1 Tetrachloro-m-xylene

R.T.: 3.647 min
 Delta R.T.: 0.000 min
 Response: 107917420
 Conc: 52.81 ng/ml



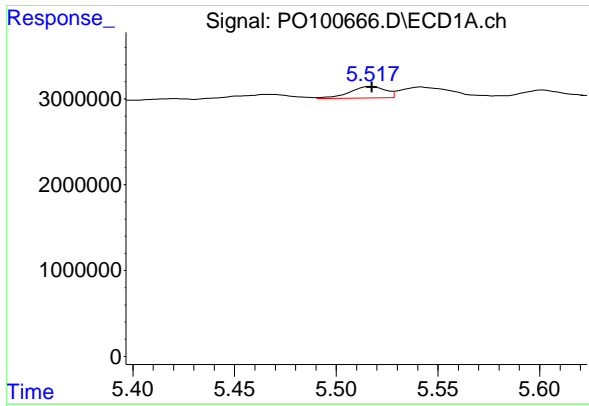
#2 Decachlorobiphenyl

R.T.: 10.088 min
 Delta R.T.: -0.004 min
 Response: 114908051
 Conc: 55.00 ng/ml



#2 Decachlorobiphenyl

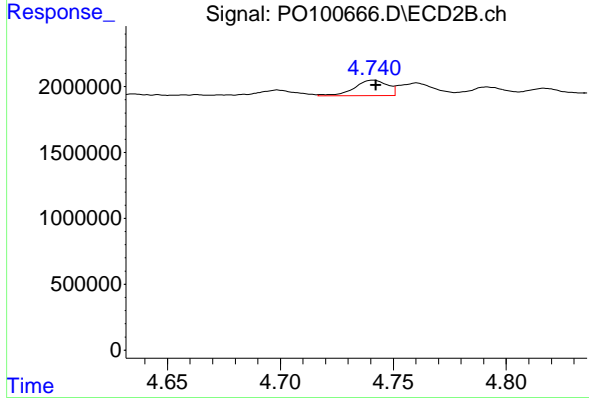
R.T.: 8.706 min
 Delta R.T.: 0.000 min
 Response: 83626534
 Conc: 55.41 ng/ml



#3 AR-1016-1

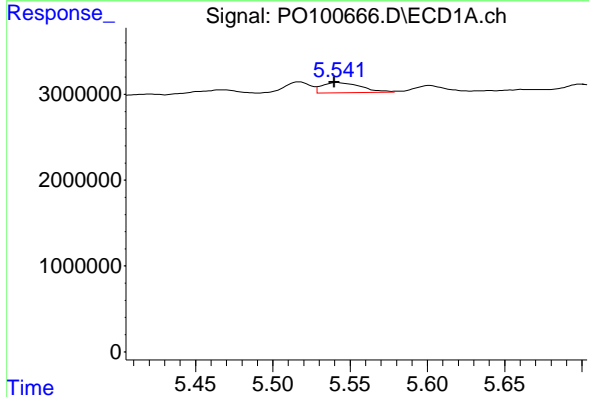
R.T.: 5.517 min
 Delta R.T.: 0.000 min
 Response: 1630227
 Conc: 18.99 ng/ml

Instrument :
 ECD_O
 ClientSampleId :



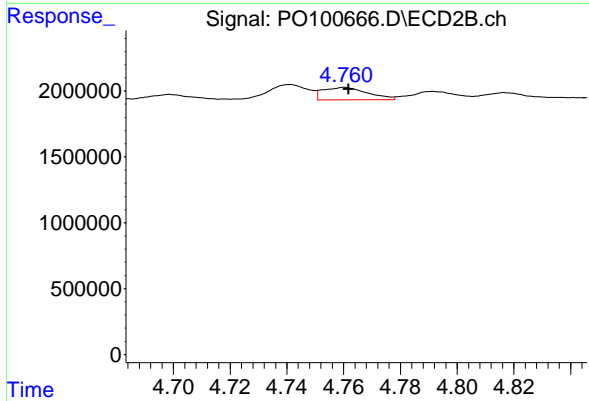
#3 AR-1016-1

R.T.: 4.741 min
 Delta R.T.: -0.001 min
 Response: 1182422
 Conc: 19.11 ng/ml



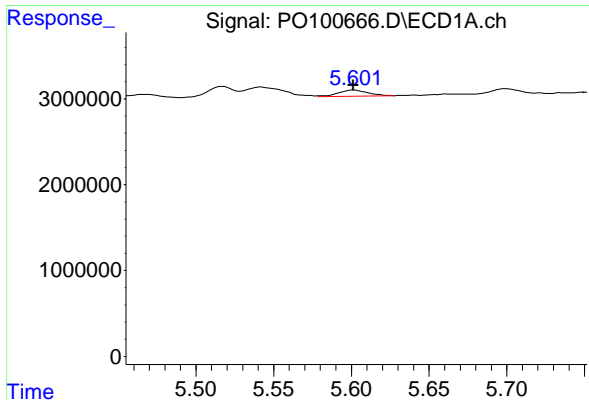
#4 AR-1016-2

R.T.: 5.542 min
 Delta R.T.: 0.002 min
 Response: 2113403
 Conc: 16.56 ng/ml



#4 AR-1016-2

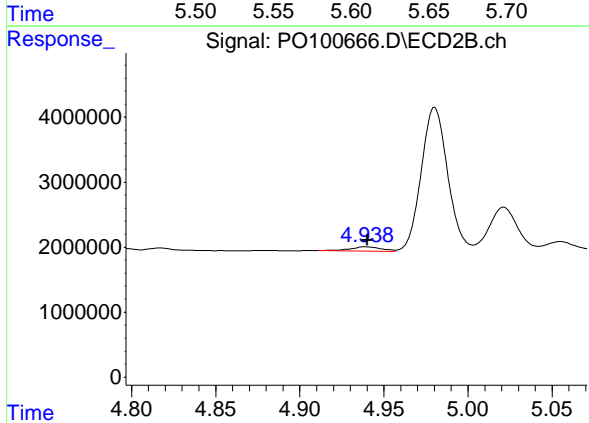
R.T.: 4.760 min
 Delta R.T.: -0.001 min
 Response: 1029158
 Conc: 11.67 ng/ml



#5 AR-1016-3

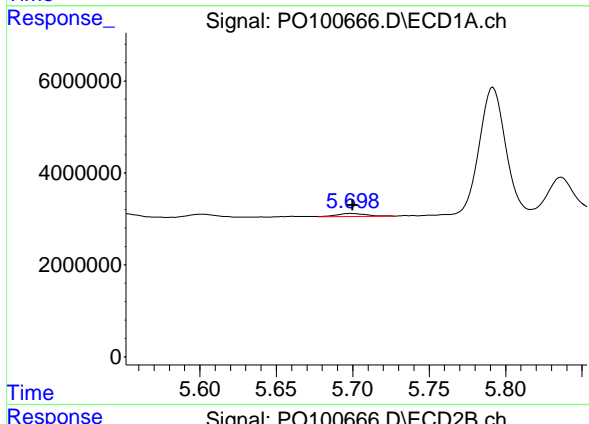
R.T.: 5.602 min
 Delta R.T.: 0.000 min
 Response: 970336
 Conc: 12.30 ng/ml

Instrument :
 ECD_O
 ClientSampleId :



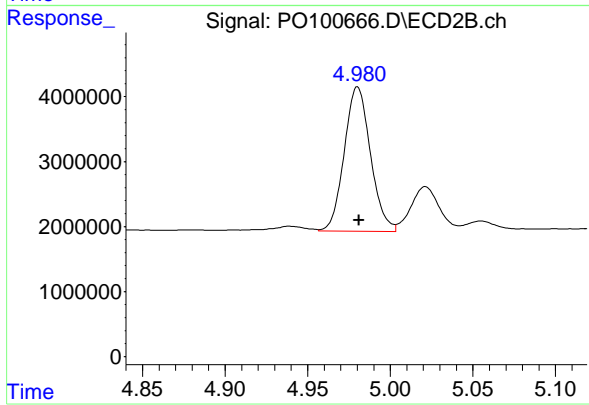
#5 AR-1016-3

R.T.: 4.939 min
 Delta R.T.: -0.001 min
 Response: 850310
 Conc: 18.20 ng/ml



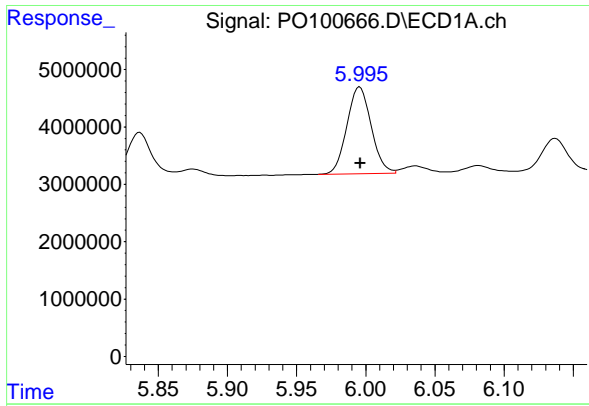
#6 AR-1016-4

R.T.: 5.699 min
 Delta R.T.: 0.000 min
 Response: 820026
 Conc: 13.46 ng/ml



#6 AR-1016-4

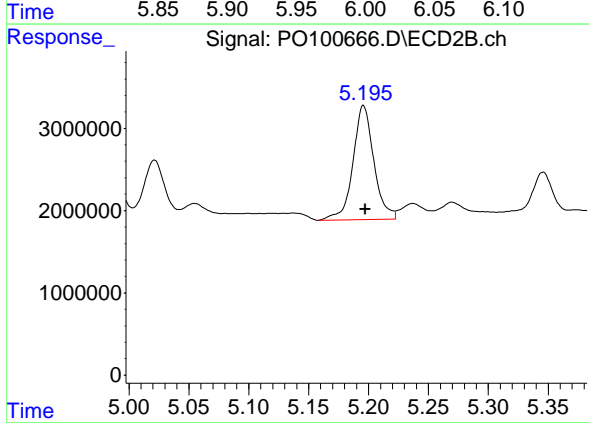
R.T.: 4.980 min
 Delta R.T.: 0.000 min
 Response: 24558818
 Conc: 598.44 ng/ml



#7 AR-1016-5

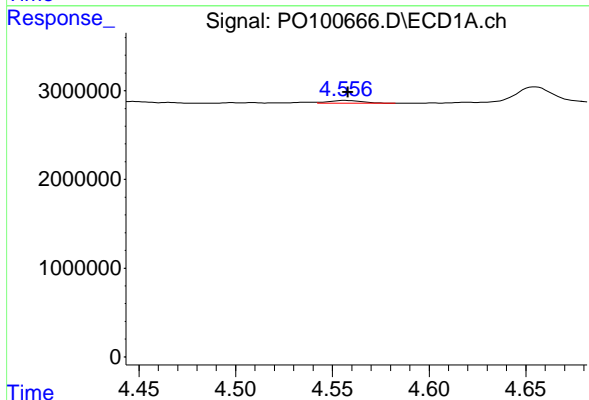
R.T.: 5.996 min
 Delta R.T.: 0.000 min
 Response: 18476880
 Conc: 301.84 ng/ml

Instrument :
 ECD_O
 ClientSampleId :



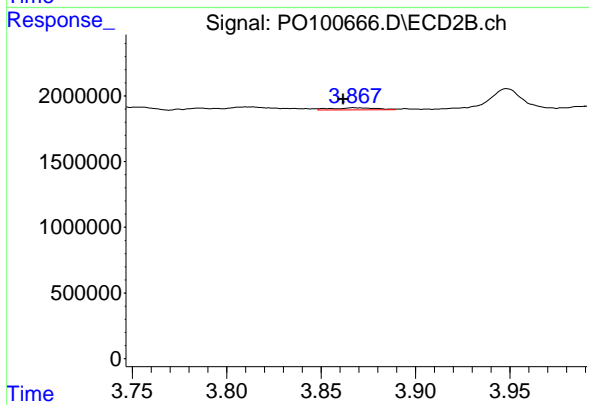
#7 AR-1016-5

R.T.: 5.196 min
 Delta R.T.: -0.002 min
 Response: 16888809
 Conc: 325.12 ng/ml



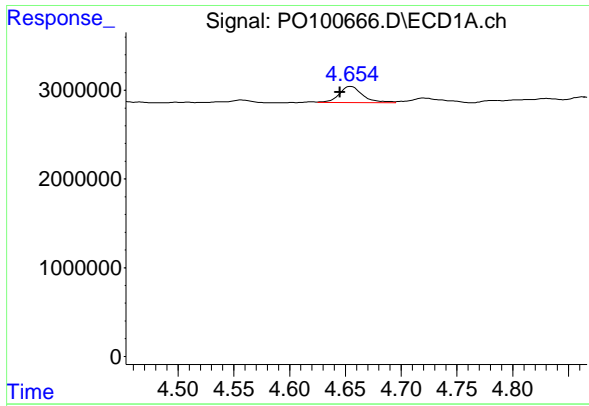
#8 AR-1221-1

R.T.: 4.557 min
 Delta R.T.: -0.001 min
 Response: 372845
 Conc: 10.09 ng/ml



#8 AR-1221-1

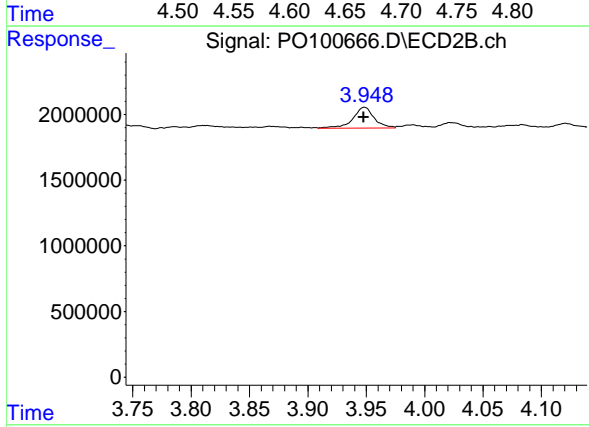
R.T.: 3.867 min
 Delta R.T.: 0.005 min
 Response: 264364
 Conc: 10.53 ng/ml



#9 AR-1221-2

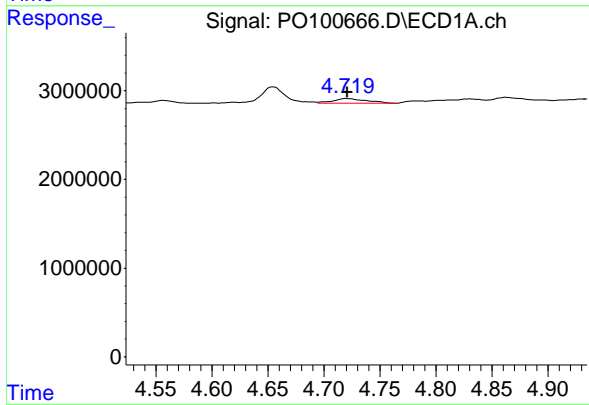
R.T.: 4.655 min
 Delta R.T.: 0.010 min
 Response: 2614657
 Conc: 94.15 ng/ml

Instrument :
 ECD_O
 ClientSampleId :



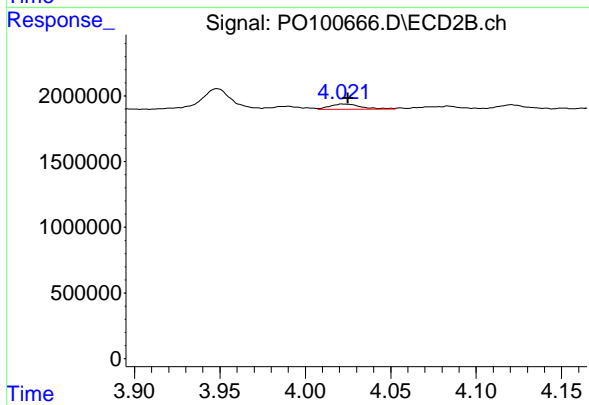
#9 AR-1221-2

R.T.: 3.948 min
 Delta R.T.: 0.000 min
 Response: 2030473
 Conc: 105.74 ng/ml



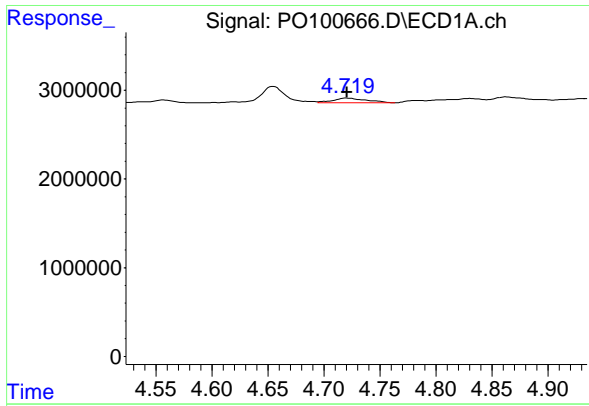
#10 AR-1221-3

R.T.: 4.720 min
 Delta R.T.: 0.000 min
 Response: 1071600
 Conc: 12.84 ng/ml



#10 AR-1221-3

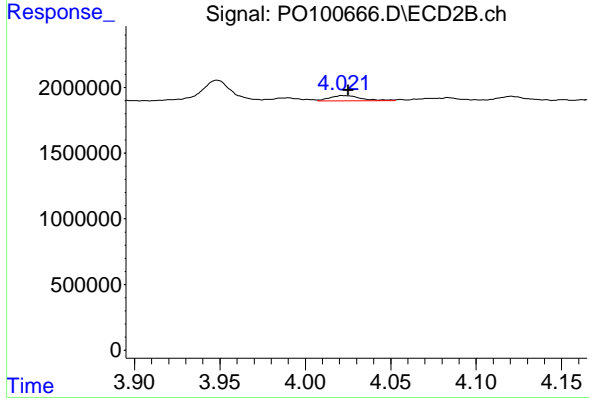
R.T.: 4.022 min
 Delta R.T.: -0.002 min
 Response: 531238
 Conc: 9.03 ng/ml



#11 AR-1232-1

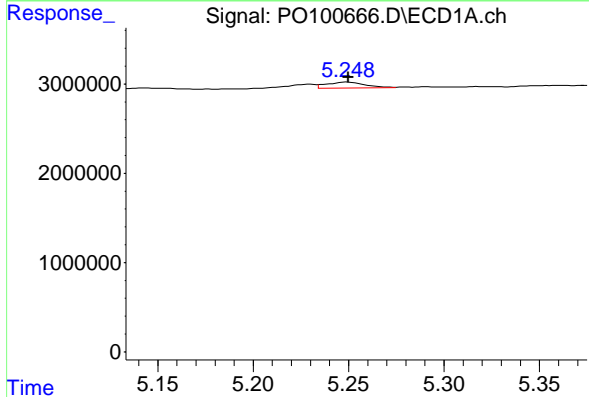
R.T.: 4.720 min
 Delta R.T.: 0.000 min
 Response: 1071600
 Conc: 16.07 ng/ml

Instrument :
 ECD_O
 ClientSampleId :



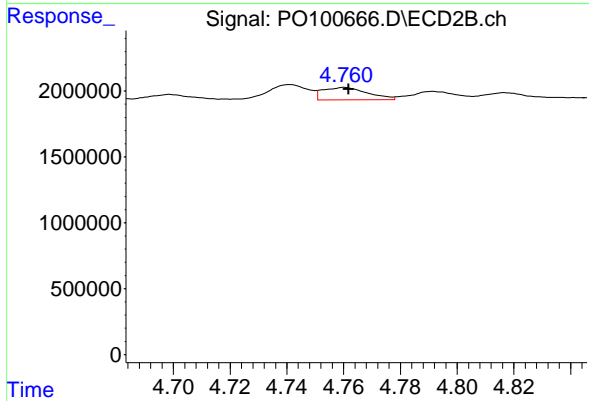
#11 AR-1232-1

R.T.: 4.022 min
 Delta R.T.: -0.003 min
 Response: 531238
 Conc: 11.24 ng/ml



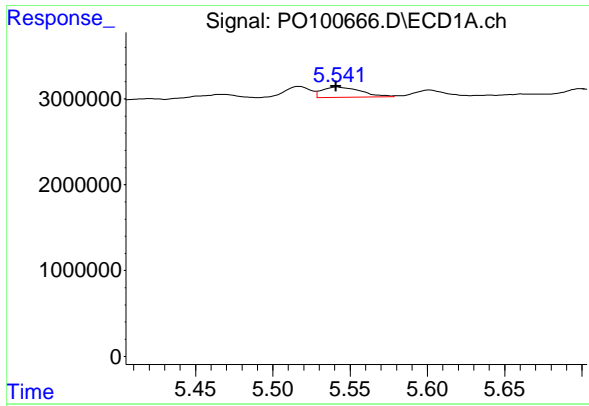
#12 AR-1232-2

R.T.: 5.249 min
 Delta R.T.: 0.000 min
 Response: 976421
 Conc: 27.85 ng/ml



#12 AR-1232-2

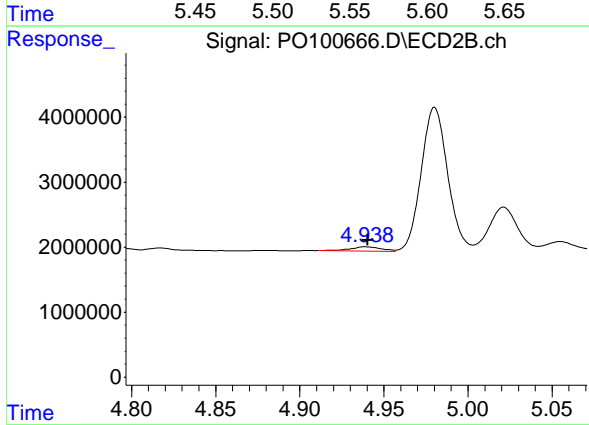
R.T.: 4.760 min
 Delta R.T.: -0.001 min
 Response: 1029158
 Conc: 24.67 ng/ml



#13 AR-1232-3

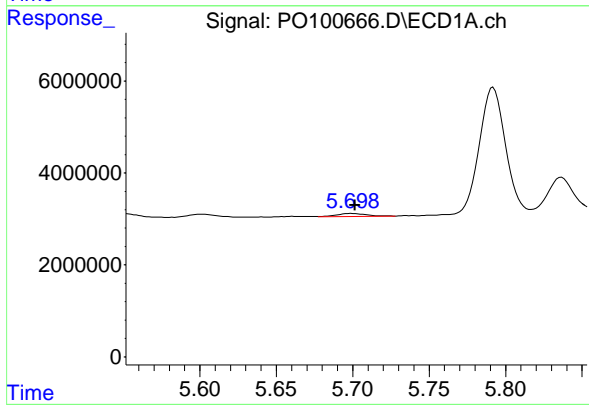
R.T.: 5.542 min
 Delta R.T.: 0.001 min
 Response: 2113403
 Conc: 35.42 ng/ml

Instrument :
 ECD_O
 ClientSampleId :



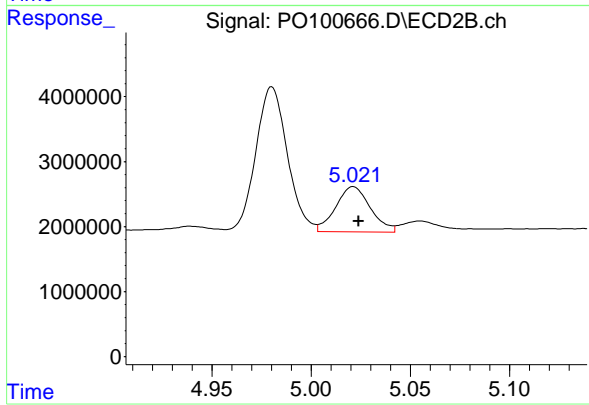
#13 AR-1232-3

R.T.: 4.939 min
 Delta R.T.: -0.001 min
 Response: 850310
 Conc: 39.63 ng/ml



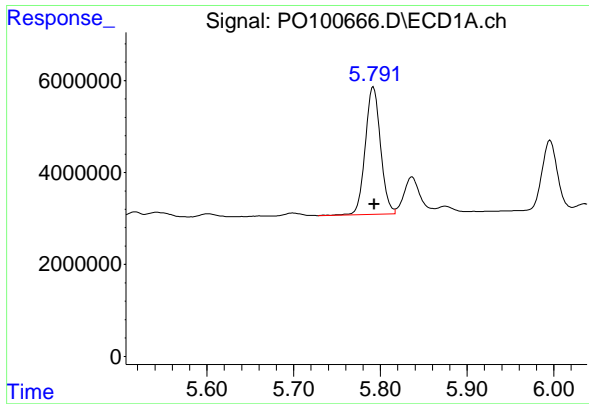
#14 AR-1232-4

R.T.: 5.699 min
 Delta R.T.: -0.002 min
 Response: 820026
 Conc: 29.91 ng/ml



#14 AR-1232-4

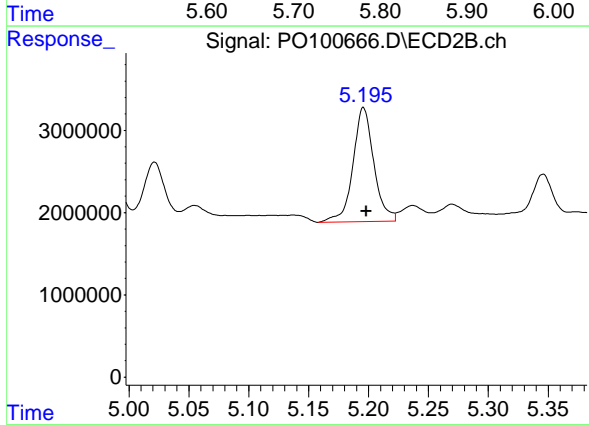
R.T.: 5.021 min
 Delta R.T.: -0.003 min
 Response: 8490647
 Conc: 399.62 ng/ml



#15 AR-1232-5

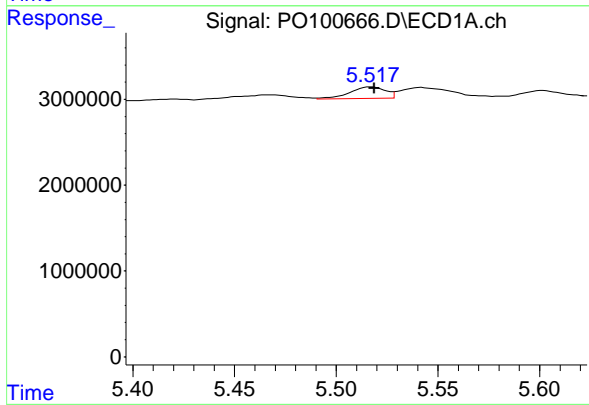
R.T.: 5.792 min
 Delta R.T.: -0.001 min
 Response: 33580066
 Conc: 1396.67 ng/ml

Instrument :
 ECD_O
 ClientSampleId :



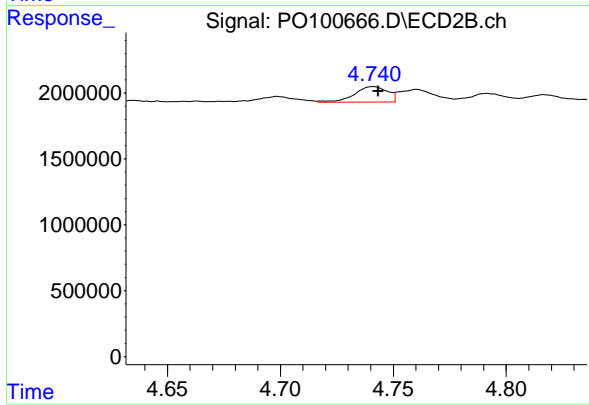
#15 AR-1232-5

R.T.: 5.196 min
 Delta R.T.: -0.002 min
 Response: 16888809
 Conc: 772.82 ng/ml



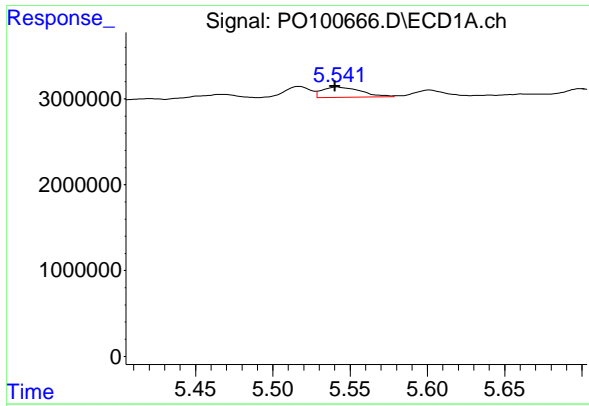
#16 AR-1242-1

R.T.: 5.517 min
 Delta R.T.: -0.001 min
 Response: 1630227
 Conc: 23.11 ng/ml



#16 AR-1242-1

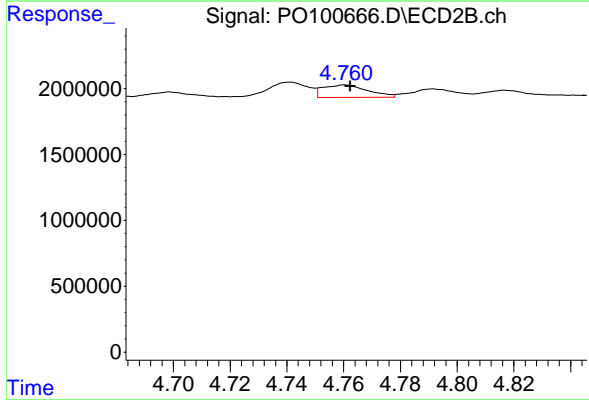
R.T.: 4.741 min
 Delta R.T.: -0.002 min
 Response: 1182422
 Conc: 22.64 ng/ml



#17 AR-1242-2

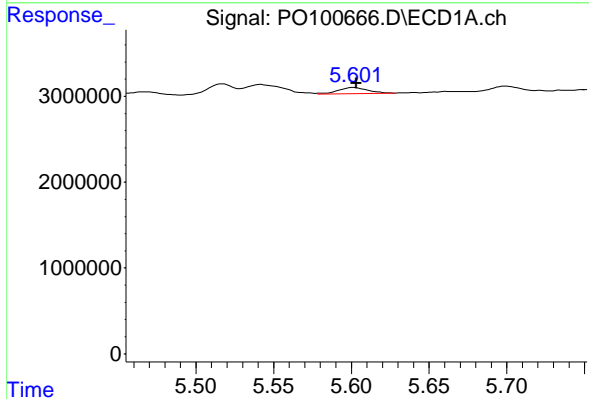
R.T.: 5.542 min
 Delta R.T.: 0.002 min
 Response: 2113403
 Conc: 20.13 ng/ml

Instrument :
 ECD_O
 ClientSampleId :



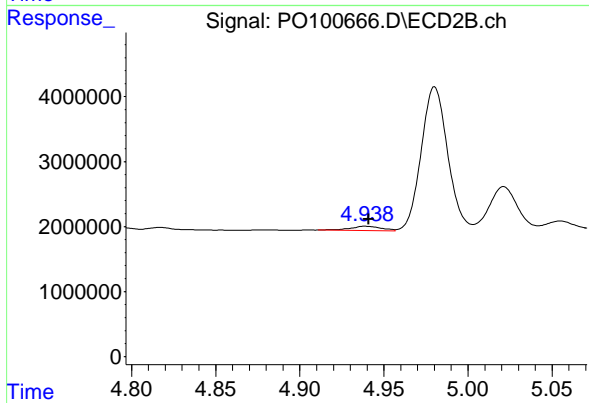
#17 AR-1242-2

R.T.: 4.760 min
 Delta R.T.: -0.002 min
 Response: 1029158
 Conc: 14.20 ng/ml



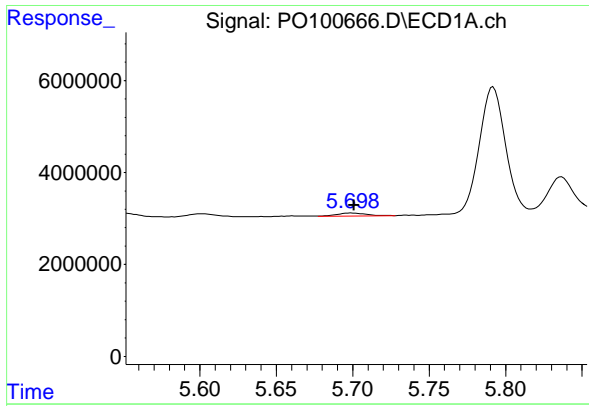
#18 AR-1242-3

R.T.: 5.602 min
 Delta R.T.: -0.001 min
 Response: 970336
 Conc: 14.93 ng/ml



#18 AR-1242-3

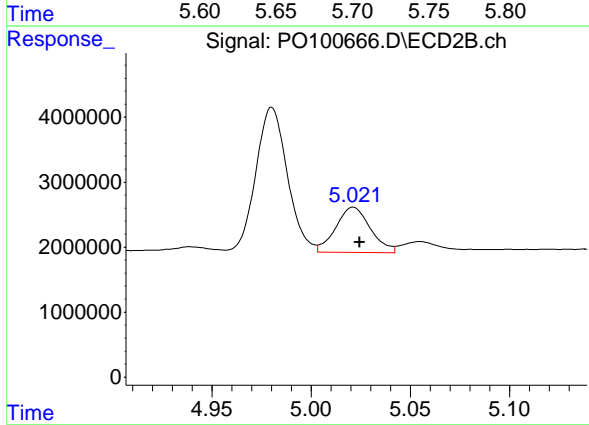
R.T.: 4.939 min
 Delta R.T.: -0.002 min
 Response: 850310
 Conc: 22.19 ng/ml



#19 AR-1242-4

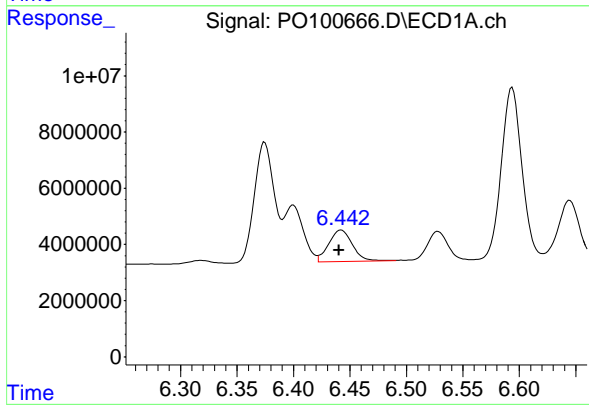
R.T.: 5.699 min
 Delta R.T.: -0.002 min
 Response: 820026
 Conc: 16.38 ng/ml

Instrument :
 ECD_O
 ClientSampleId :



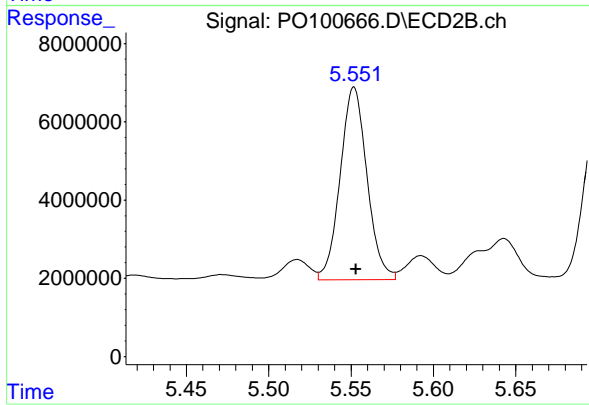
#19 AR-1242-4

R.T.: 5.021 min
 Delta R.T.: -0.003 min
 Response: 8490647
 Conc: 203.70 ng/ml



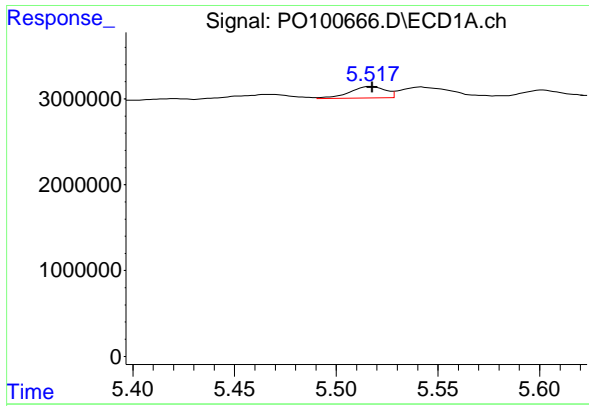
#20 AR-1242-5

R.T.: 6.442 min
 Delta R.T.: 0.002 min
 Response: 16513517
 Conc: 319.06 ng/ml



#20 AR-1242-5

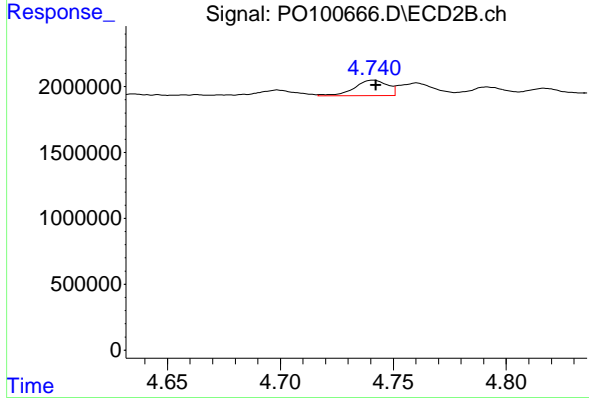
R.T.: 5.552 min
 Delta R.T.: -0.001 min
 Response: 55841511
 Conc: 1216.73 ng/ml



#21 AR-1248-1

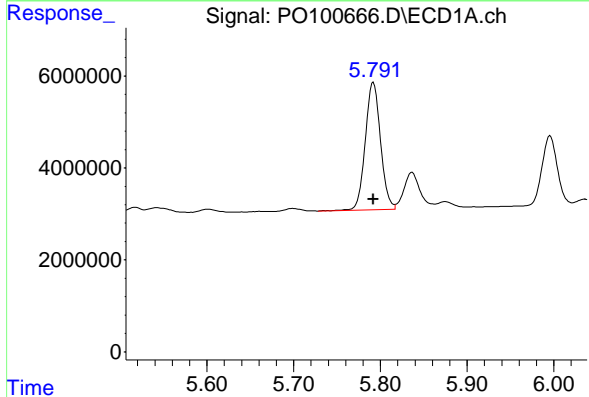
R.T.: 5.517 min
 Delta R.T.: 0.000 min
 Response: 1630227
 Conc: 29.72 ng/ml

Instrument :
 ECD_O
 ClientSampleId :



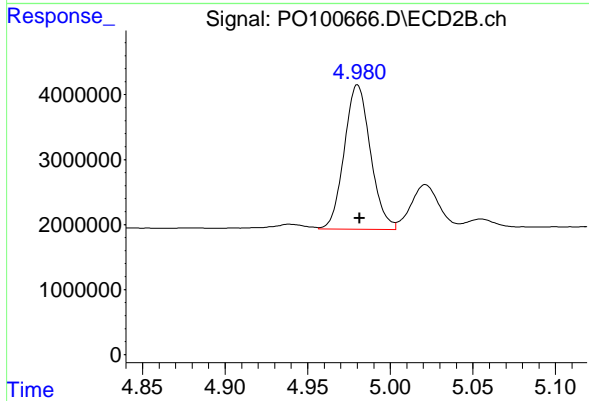
#21 AR-1248-1

R.T.: 4.741 min
 Delta R.T.: -0.001 min
 Response: 1182422
 Conc: 29.57 ng/ml



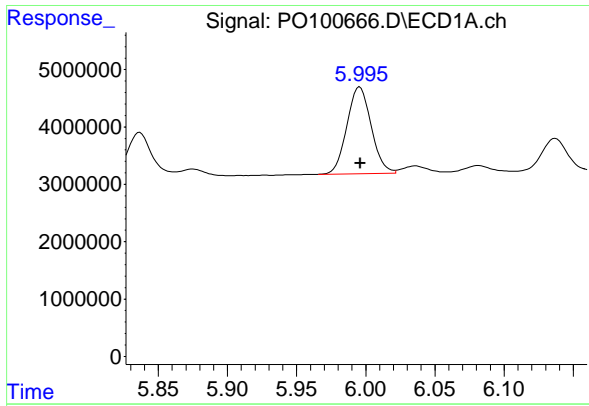
#22 AR-1248-2

R.T.: 5.792 min
 Delta R.T.: 0.000 min
 Response: 33580066
 Conc: 388.80 ng/ml



#22 AR-1248-2

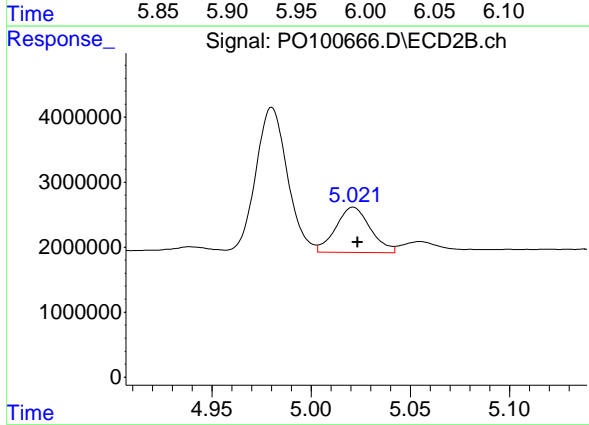
R.T.: 4.980 min
 Delta R.T.: -0.001 min
 Response: 24558818
 Conc: 408.21 ng/ml



#23 AR-1248-3

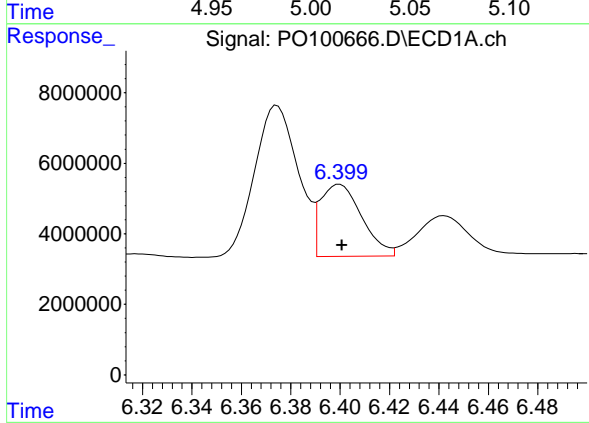
R.T.: 5.996 min
 Delta R.T.: 0.000 min
 Response: 18476880
 Conc: 210.51 ng/ml

Instrument :
 ECD_O
 ClientSampleId :



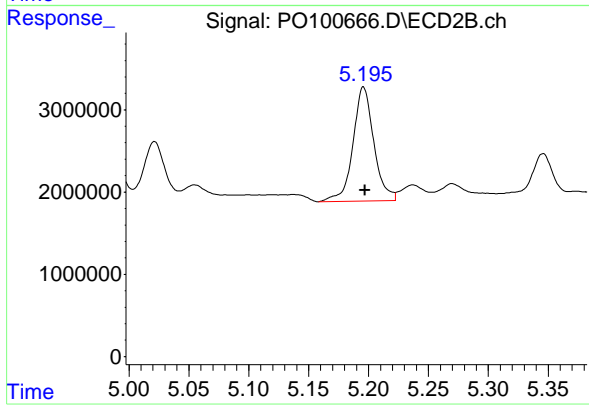
#23 AR-1248-3

R.T.: 5.021 min
 Delta R.T.: -0.002 min
 Response: 8490647
 Conc: 135.83 ng/ml



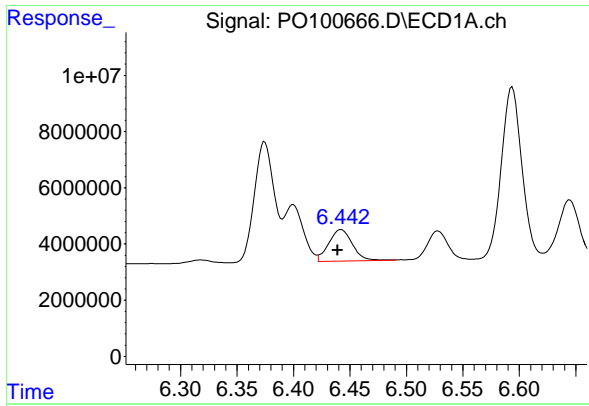
#24 AR-1248-4

R.T.: 6.400 min
 Delta R.T.: 0.000 min
 Response: 23763221
 Conc: 264.31 ng/ml



#24 AR-1248-4

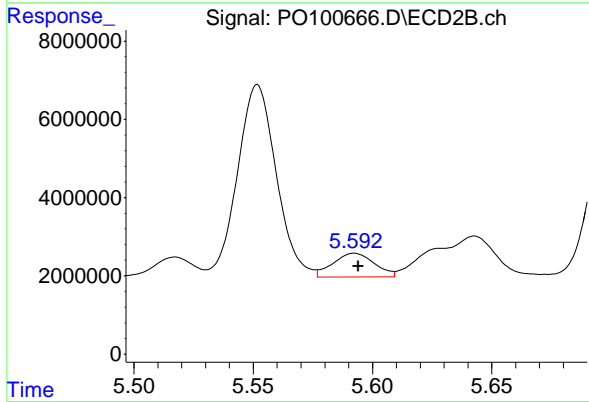
R.T.: 5.196 min
 Delta R.T.: -0.001 min
 Response: 16888809
 Conc: 234.47 ng/ml



#25 AR-1248-5

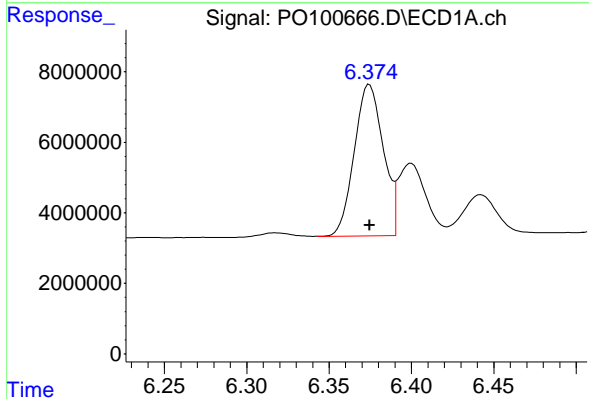
R.T.: 6.442 min
 Delta R.T.: 0.003 min
 Response: 16513517
 Conc: 183.97 ng/ml

Instrument :
 ECD_O
 ClientSampleId :



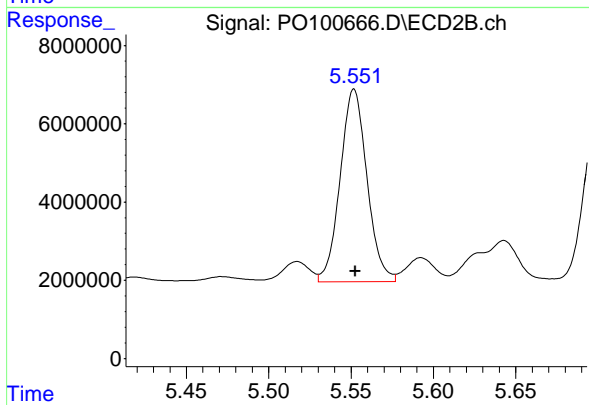
#25 AR-1248-5

R.T.: 5.592 min
 Delta R.T.: -0.002 min
 Response: 7373880
 Conc: 119.53 ng/ml



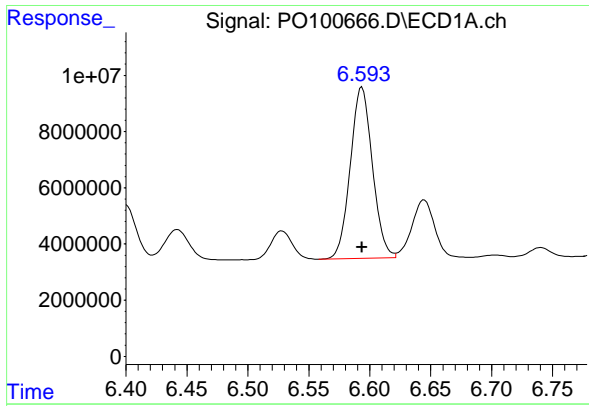
#26 AR-1254-1

R.T.: 6.374 min
 Delta R.T.: 0.000 min
 Response: 52618705
 Conc: 500.57 ng/ml



#26 AR-1254-1

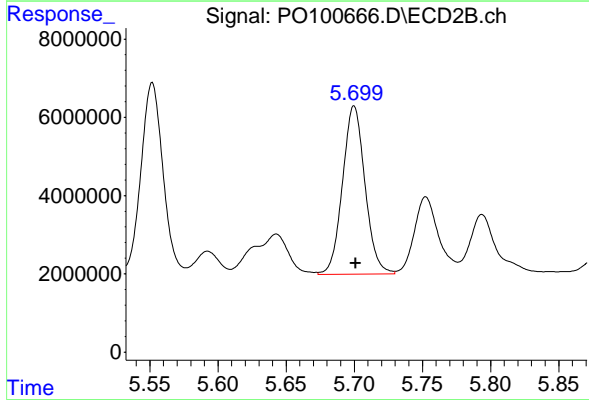
R.T.: 5.552 min
 Delta R.T.: 0.000 min
 Response: 55841511
 Conc: 544.11 ng/ml



#27 AR-1254-2

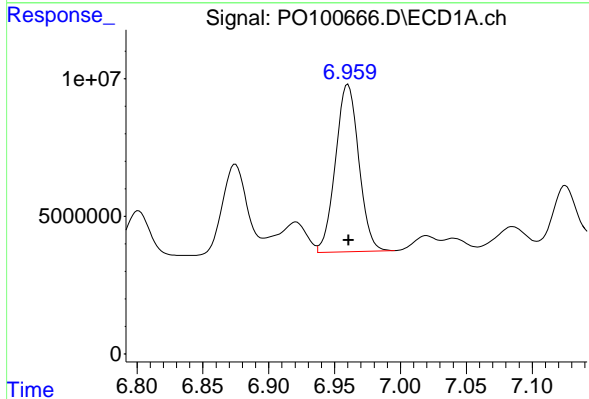
R.T.: 6.594 min
 Delta R.T.: 0.000 min
 Response: 77032444
 Conc: 521.68 ng/ml

Instrument :
 ECD_O
 ClientSampleId :



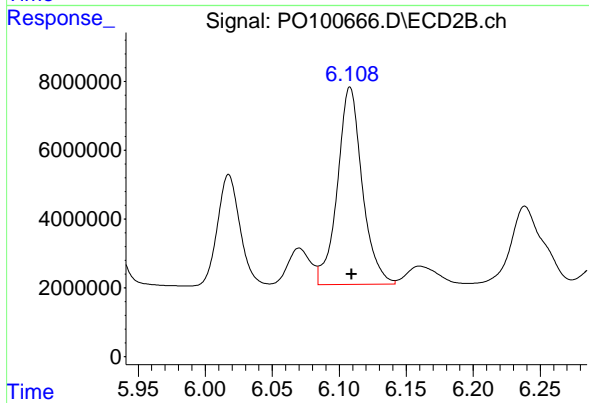
#27 AR-1254-2

R.T.: 5.700 min
 Delta R.T.: -0.001 min
 Response: 49426351
 Conc: 537.99 ng/ml



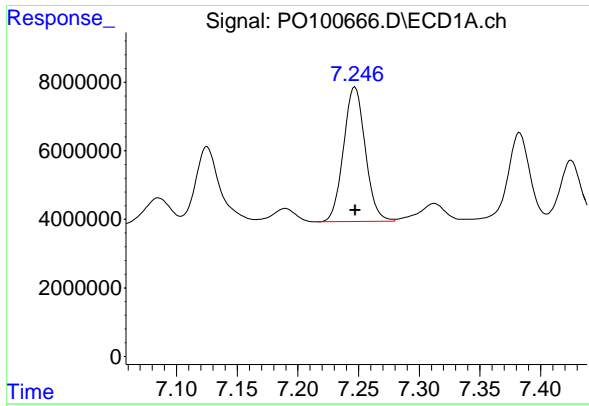
#28 AR-1254-3

R.T.: 6.960 min
 Delta R.T.: 0.000 min
 Response: 74768763
 Conc: 533.96 ng/ml



#28 AR-1254-3

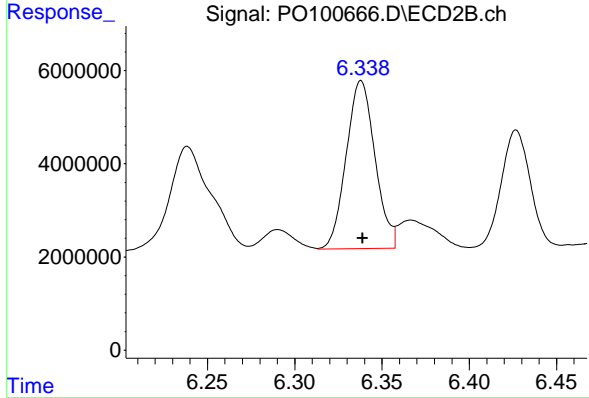
R.T.: 6.108 min
 Delta R.T.: -0.001 min
 Response: 73938336
 Conc: 546.73 ng/ml



#29 AR-1254-4

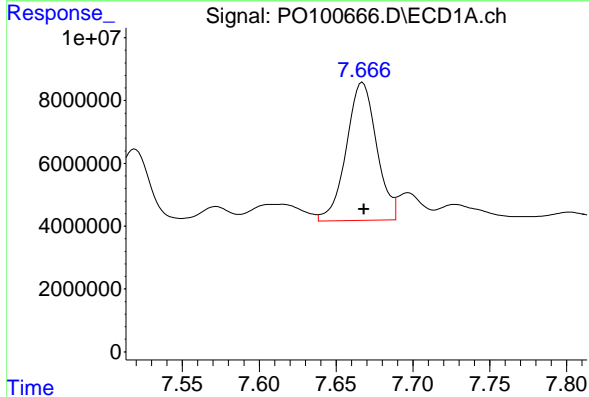
R.T.: 7.247 min
 Delta R.T.: 0.000 min
 Response: 49030539
 Conc: 576.74 ng/ml

Instrument :
 ECD_O
 ClientSampleId :



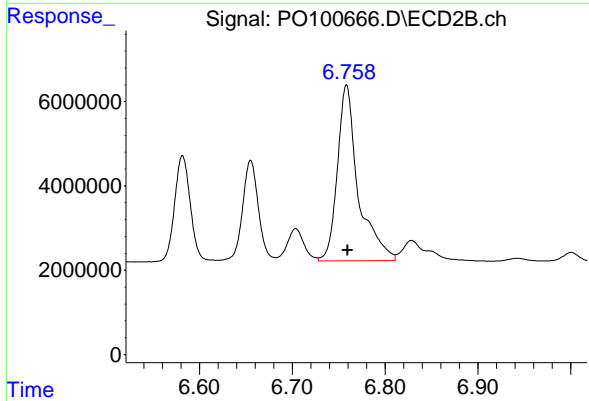
#29 AR-1254-4

R.T.: 6.338 min
 Delta R.T.: 0.000 min
 Response: 41400976
 Conc: 573.97 ng/ml



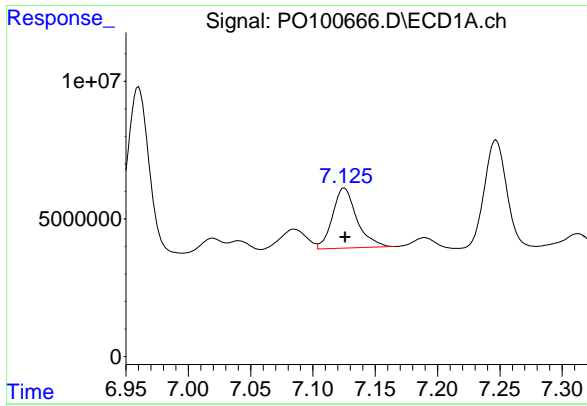
#30 AR-1254-5

R.T.: 7.667 min
 Delta R.T.: 0.000 min
 Response: 60057808
 Conc: 507.56 ng/ml



#30 AR-1254-5

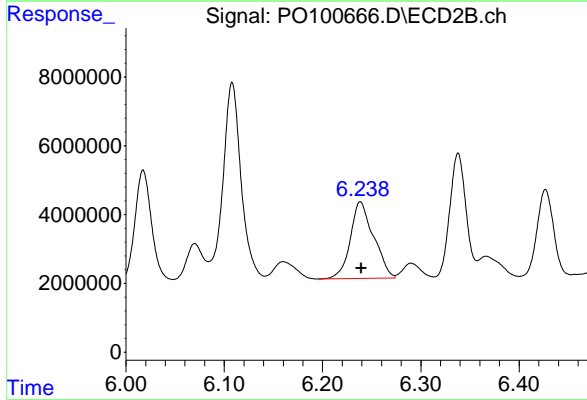
R.T.: 6.758 min
 Delta R.T.: -0.001 min
 Response: 65218657
 Conc: 566.02 ng/ml



#31 AR-1260-1

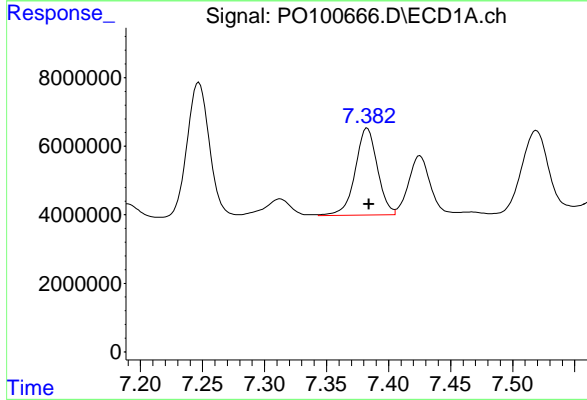
R.T.: 7.125 min
 Delta R.T.: 0.000 min
 Response: 29520276
 Conc: 215.48 ng/ml

Instrument :
 ECD_O
 ClientSampleId :



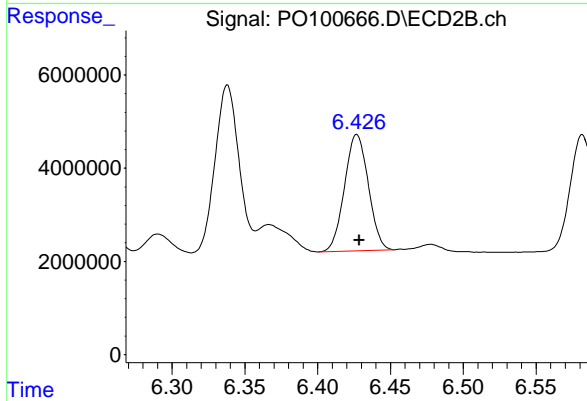
#31 AR-1260-1

R.T.: 6.239 min
 Delta R.T.: 0.000 min
 Response: 36665222
 Conc: 384.92 ng/ml



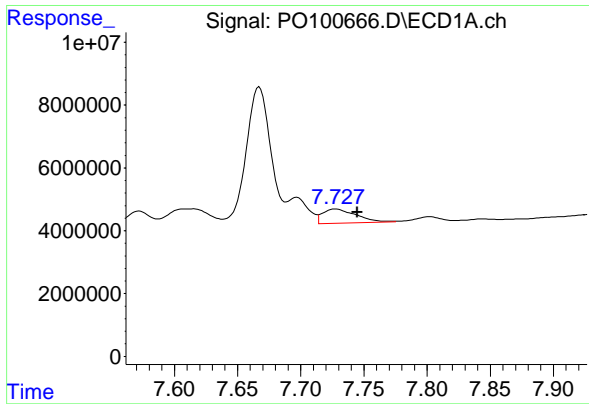
#32 AR-1260-2

R.T.: 7.383 min
 Delta R.T.: -0.001 min
 Response: 31631422
 Conc: 251.50 ng/ml



#32 AR-1260-2

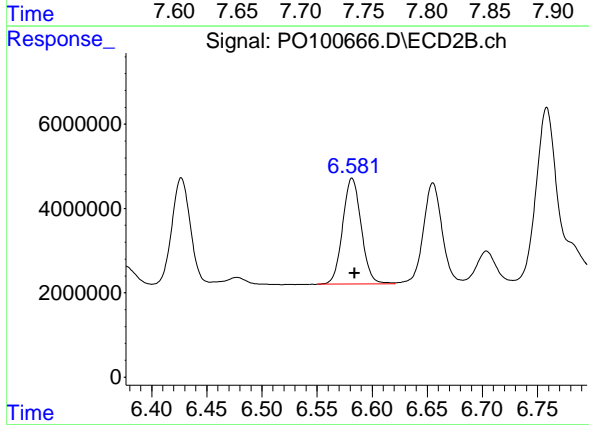
R.T.: 6.427 min
 Delta R.T.: -0.002 min
 Response: 28439838
 Conc: 264.60 ng/ml



#33 AR-1260-3

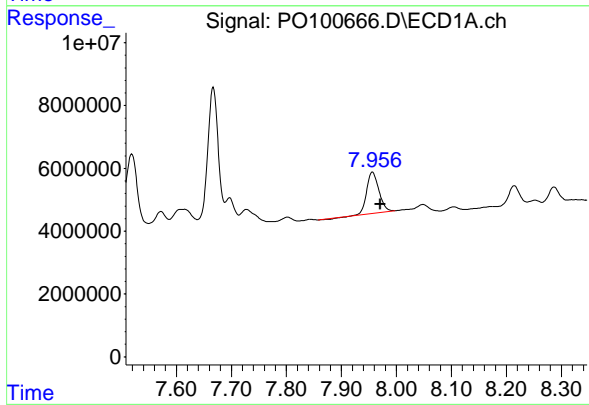
R.T.: 7.728 min
 Delta R.T.: -0.017 min
 Response: 8404186
 Conc: 86.76 ng/ml

Instrument :
 ECD_O
 ClientSampleId :



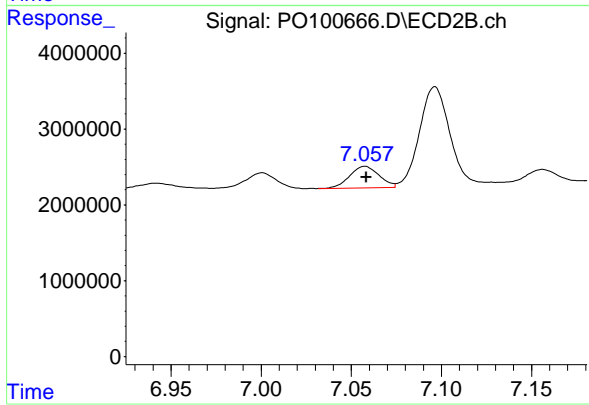
#33 AR-1260-3

R.T.: 6.582 min
 Delta R.T.: -0.002 min
 Response: 29430273
 Conc: 287.13 ng/ml



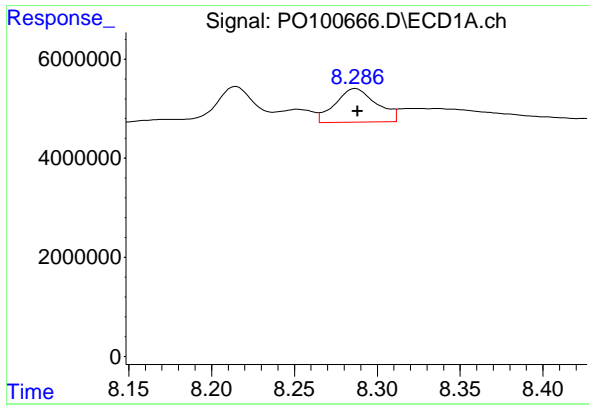
#34 AR-1260-4

R.T.: 7.957 min
 Delta R.T.: -0.014 min
 Response: 19909285
 Conc: 188.67 ng/ml



#34 AR-1260-4

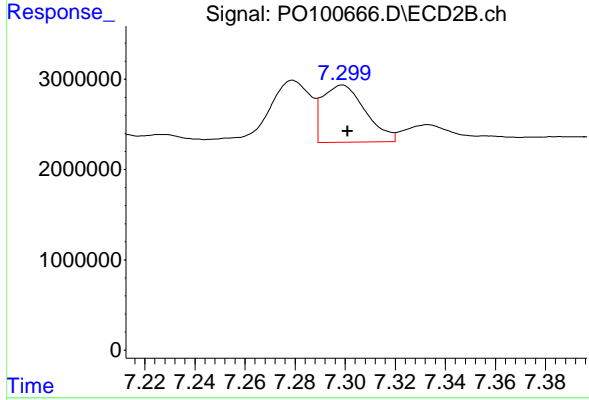
R.T.: 7.058 min
 Delta R.T.: 0.000 min
 Response: 3235348
 Conc: 39.68 ng/ml



#35 AR-1260-5

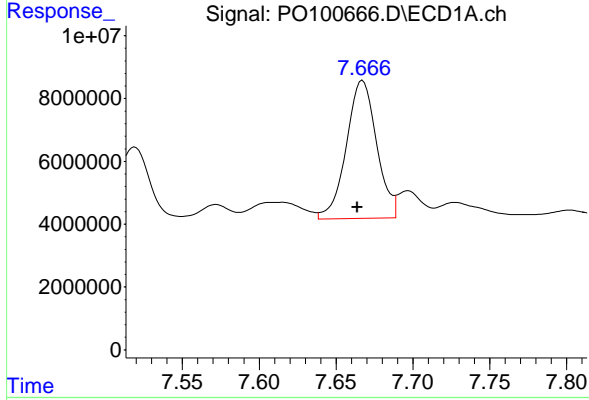
R.T.: 8.287 min
 Delta R.T.: -0.001 min
 Response: 11763668
 Conc: 55.73 ng/ml

Instrument :
 ECD_O
 ClientSampleId :



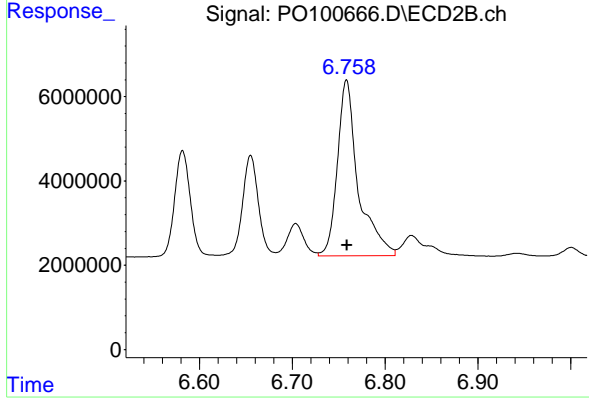
#35 AR-1260-5

R.T.: 7.299 min
 Delta R.T.: -0.002 min
 Response: 7513307
 Conc: 41.63 ng/ml



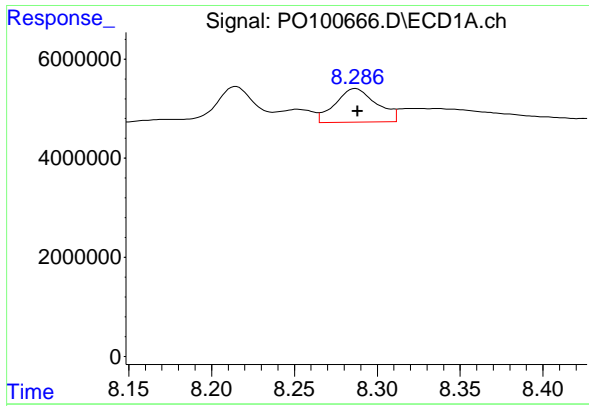
#36 AR-1262-1

R.T.: 7.667 min
 Delta R.T.: 0.003 min
 Response: 60057808
 Conc: 601.18 ng/ml



#36 AR-1262-1

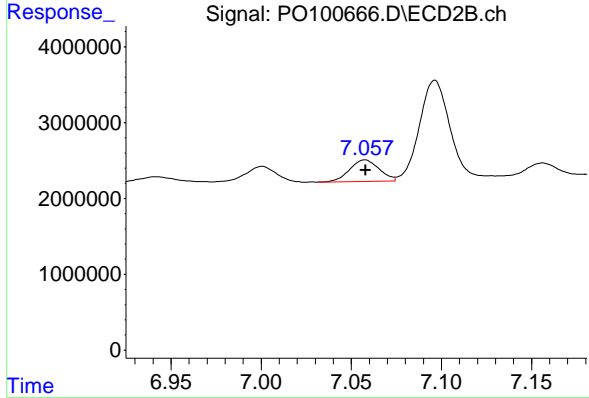
R.T.: 6.758 min
 Delta R.T.: 0.000 min
 Response: 65218657
 Conc: 1045.53 ng/ml



#37 AR-1262-2

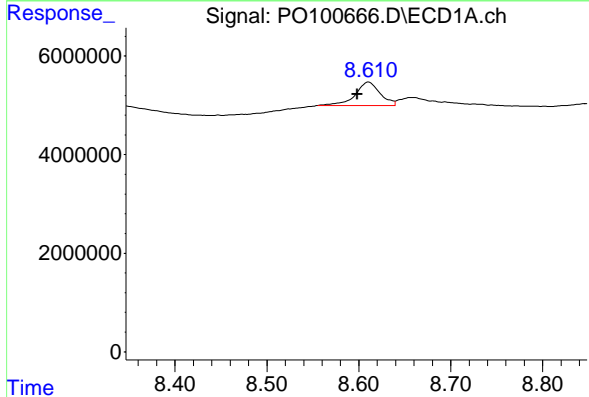
R.T.: 8.287 min
 Delta R.T.: -0.001 min
 Response: 11763668
 Conc: 49.57 ng/ml

Instrument :
 ECD_O
 ClientSampleId :



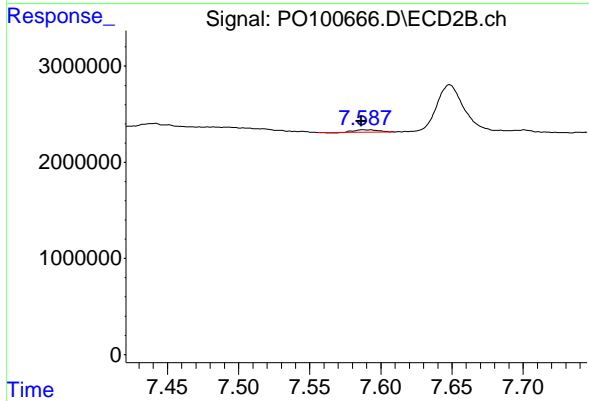
#37 AR-1262-2

R.T.: 7.058 min
 Delta R.T.: 0.000 min
 Response: 3235348
 Conc: 28.63 ng/ml



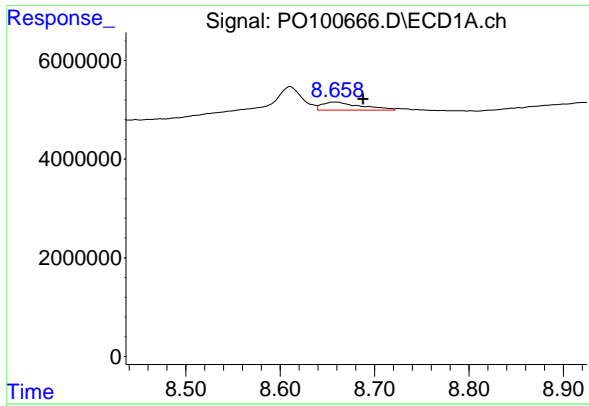
#38 AR-1262-3

R.T.: 8.611 min
 Delta R.T.: 0.012 min
 Response: 8926263
 Conc: 54.96 ng/ml



#38 AR-1262-3

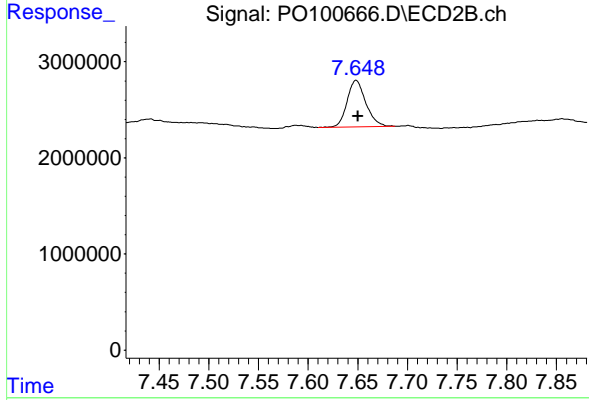
R.T.: 7.587 min
 Delta R.T.: 0.001 min
 Response: 275855
 Conc: 3.58 ng/ml



#39 AR-1262-4

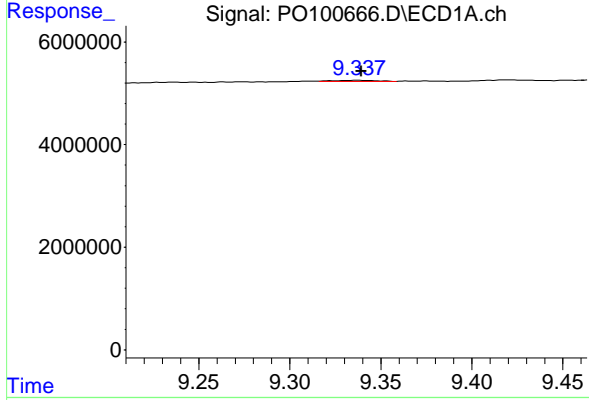
R.T.: 8.659 min
 Delta R.T.: -0.029 min
 Response: 4554893
 Conc: 35.33 ng/ml

Instrument :
 ECD_O
 ClientSampleId :



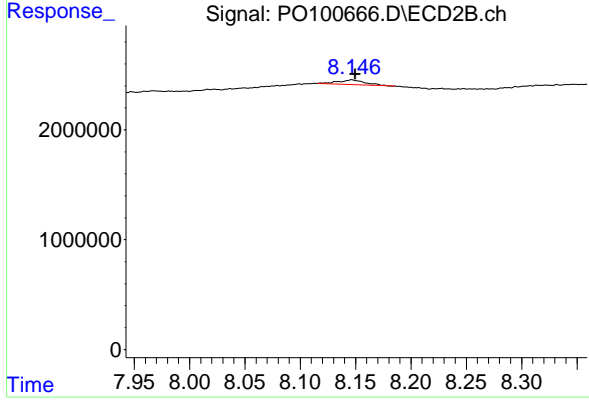
#39 AR-1262-4

R.T.: 7.648 min
 Delta R.T.: -0.002 min
 Response: 6365550
 Conc: 43.09 ng/ml



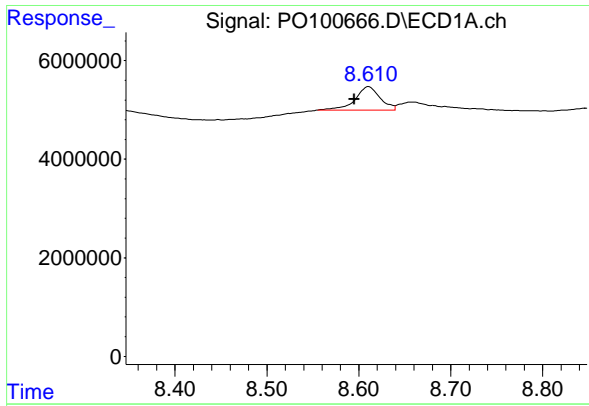
#40 AR-1262-5

R.T.: 9.337 min
 Delta R.T.: -0.002 min
 Response: 403436
 Conc: 5.06 ng/ml



#40 AR-1262-5

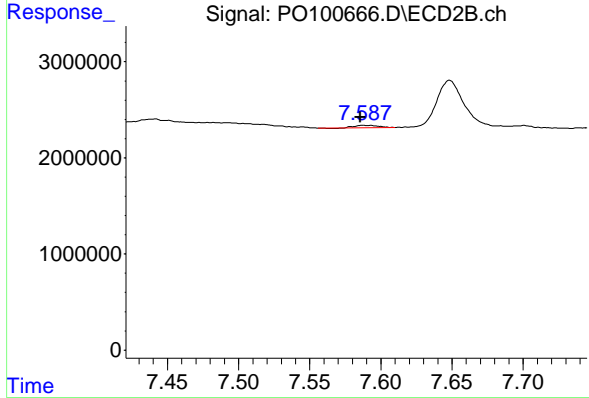
R.T.: 8.147 min
 Delta R.T.: -0.003 min
 Response: 670876
 Conc: 10.49 ng/ml



#41 AR-1268-1

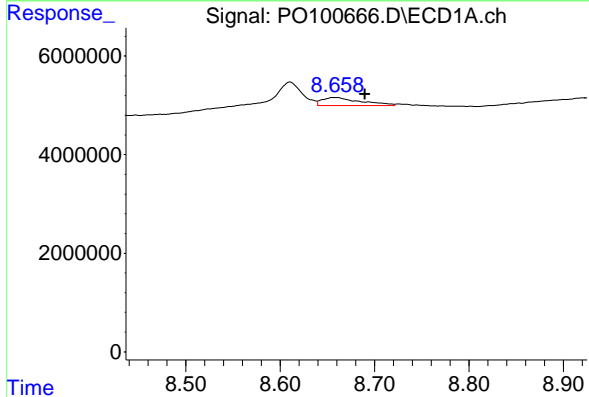
R.T.: 8.611 min
 Delta R.T.: 0.016 min
 Response: 8926263
 Conc: 31.59 ng/ml

Instrument :
 ECD_O
 ClientSampleId :



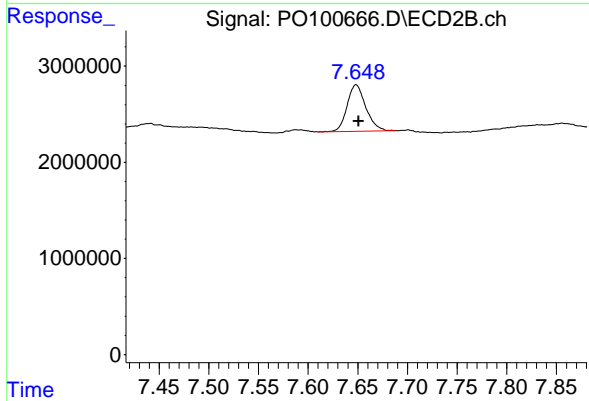
#41 AR-1268-1

R.T.: 7.587 min
 Delta R.T.: 0.002 min
 Response: 275855
 Conc: 1.24 ng/ml



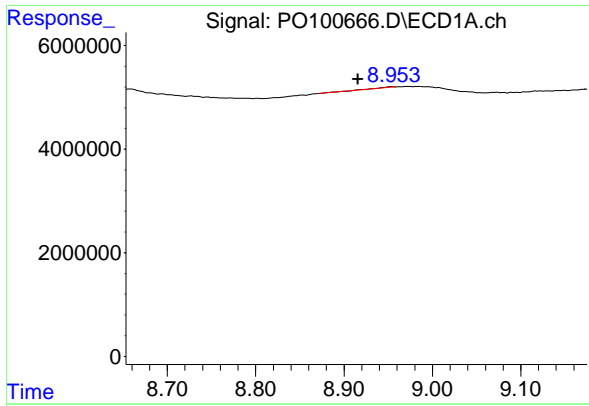
#42 AR-1268-2

R.T.: 8.659 min
 Delta R.T.: -0.031 min
 Response: 4554893
 Conc: 18.02 ng/ml



#42 AR-1268-2

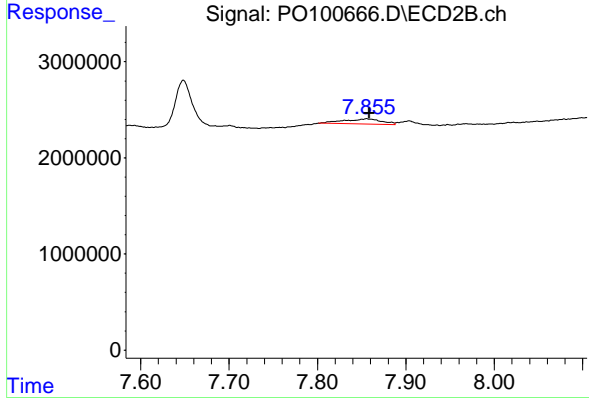
R.T.: 7.648 min
 Delta R.T.: -0.003 min
 Response: 6365550
 Conc: 31.47 ng/ml



#43 AR-1268-3

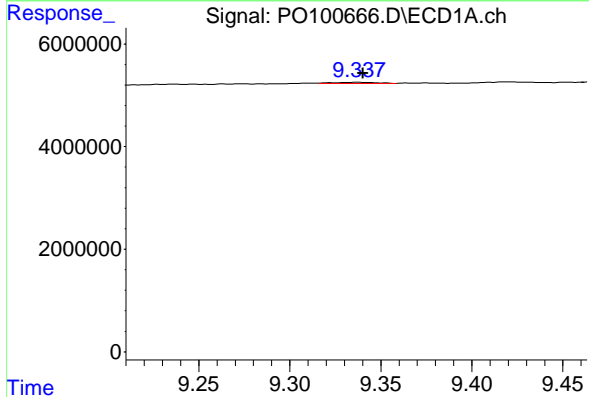
R.T.: 8.954 min
 Delta R.T.: 0.038 min
 Response: 142530
 Conc: 0.62 ng/ml

Instrument :
 ECD_O
 ClientSampleId :



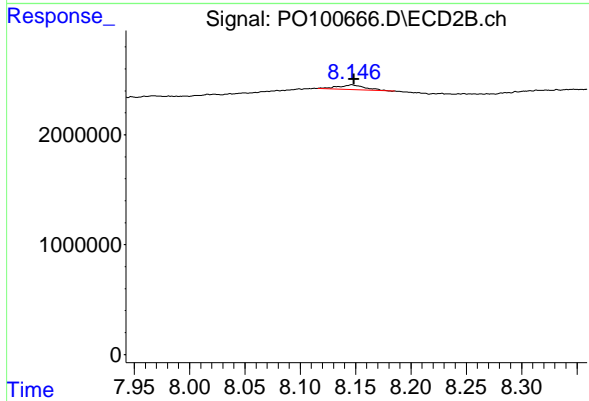
#43 AR-1268-3

R.T.: 7.856 min
 Delta R.T.: -0.003 min
 Response: 1627325
 Conc: 8.63 ng/ml



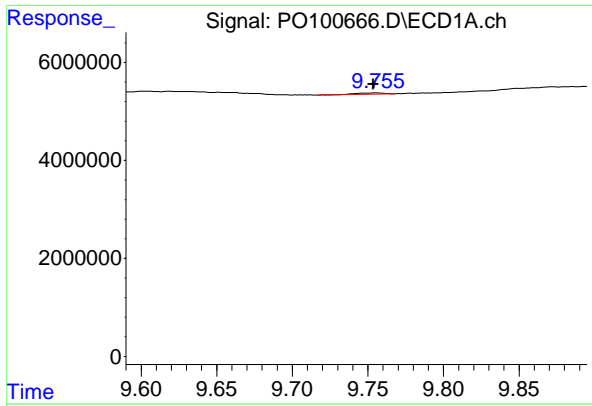
#44 AR-1268-4

R.T.: 9.337 min
 Delta R.T.: -0.003 min
 Response: 403436
 Conc: 5.15 ng/ml



#44 AR-1268-4

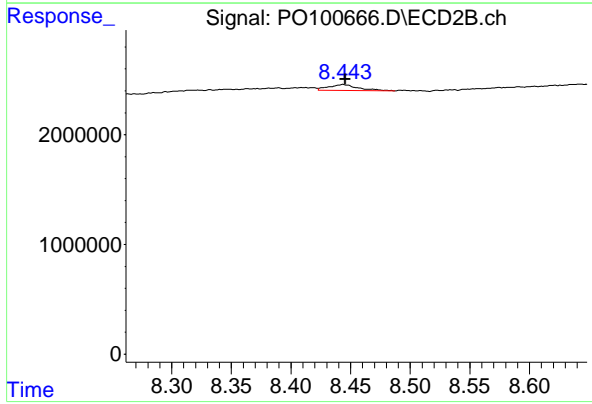
R.T.: 8.147 min
 Delta R.T.: -0.002 min
 Response: 670876
 Conc: 9.99 ng/ml



#45 AR-1268-5

R.T.: 9.756 min
 Delta R.T.: 0.003 min
 Response: 342062
 Conc: 0.48 ng/ml

Instrument :
 ECD_O
 ClientSampleId :



#45 AR-1268-5

R.T.: 8.444 min
 Delta R.T.: -0.002 min
 Response: 928262
 Conc: 1.79 ng/ml