

Data Path : Z:\pestpcbsrv\HPCHEM1\ECD\_0\Data\PO122220\  
 Data File : PO074065.D  
 Signal(s) : Signal #1: ECD1A.CH Signal #2: ECD2B.CH  
 Acq On : 23 Dec 2020 2:06  
 Operator : DD\AJ  
 Sample : L5163-02DL 5X  
 Misc :  
 ALS Vial : 51 Sample Multiplier: 1

Instrument :  
 ECD\_0  
 ClientSampleID :  
 S23-02-ADL

Integration File signal 1: autoint1.e  
 Integration File signal 2: autoint2.e  
 Quant Time: Dec 23 08:17:23 2020  
 Quant Method : Z:\pestpcbsrv\HPCHEM1\ECD\_0\methods\PO121020.M  
 Quant Title : GC EXTRACTABLES  
 QLast Update : Fri Dec 11 03:58:06 2020  
 Response via : Initial Calibration  
 Integrator: ChemStation 6890 Scale Mode: Small noise peaks clipped

Volume Inj. : 2 µl  
 Signal #1 Phase : ZB-MR2 Signal #2 Phase: ZB-MR2  
 Signal #1 Info : 30Mx0.32mmx 0.50µ Signal #2 Info : 30M x 0.32mm x 0.25µm

	Compound	RT#1	RT#2	Resp#1	Resp#2	ng/ml	ng/ml
-----							
System Monitoring Compounds							
1)	SA Tetrachlo...	4.936	3.994	408861	259719	4.472	4.842
2)	SA Decachlor...	10.958	9.255	3057787	1736044	37.001	37.102
Target Compounds							
26)	L6 AR-1254-1	7.174	6.107	413919	306833	109.047	86.822
27)	L6 AR-1254-2	7.402	6.266	690553	395047	117.126	126.536
28)	L6 AR-1254-3	7.785	6.683	832672	636656	135.898	130.036
29)	L6 AR-1254-4	8.082	6.921	860564	521281	164.042	148.638
30)	L6 AR-1254-5	8.511	7.347	1243856	884672	241.501	200.623
41)	L9 AR-1268-1	9.453	8.180	12213405	7976788	857.494	828.884
42)	L9 AR-1268-2	9.549	8.245	7032355	4645604	570.484	563.882
43)	L9 AR-1268-3	9.775	8.451	9670062	6233051	890.994	882.760
44)	L9 AR-1268-4	10.212	8.738	1668966	1033854	356.273	349.273
45)	L9 AR-1268-5	10.626	9.016	25256791	15120672	771.761	752.643
-----							

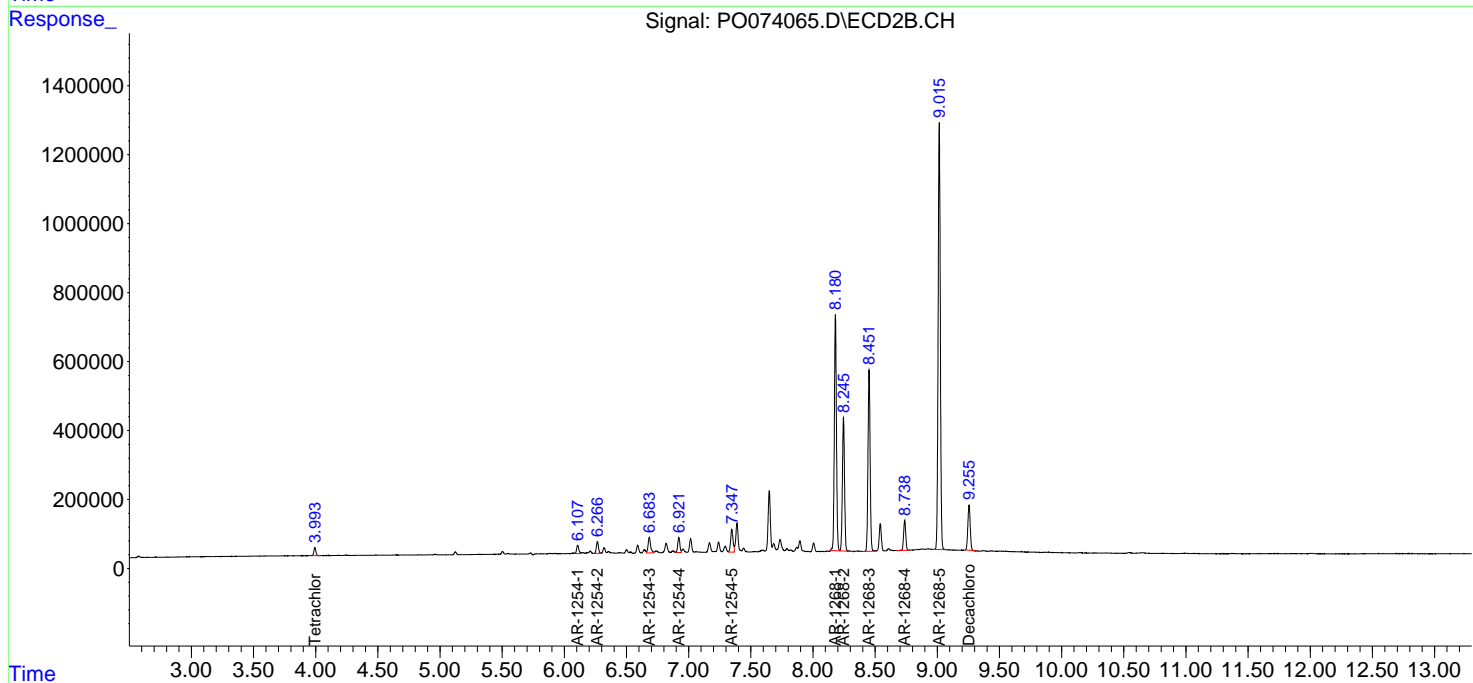
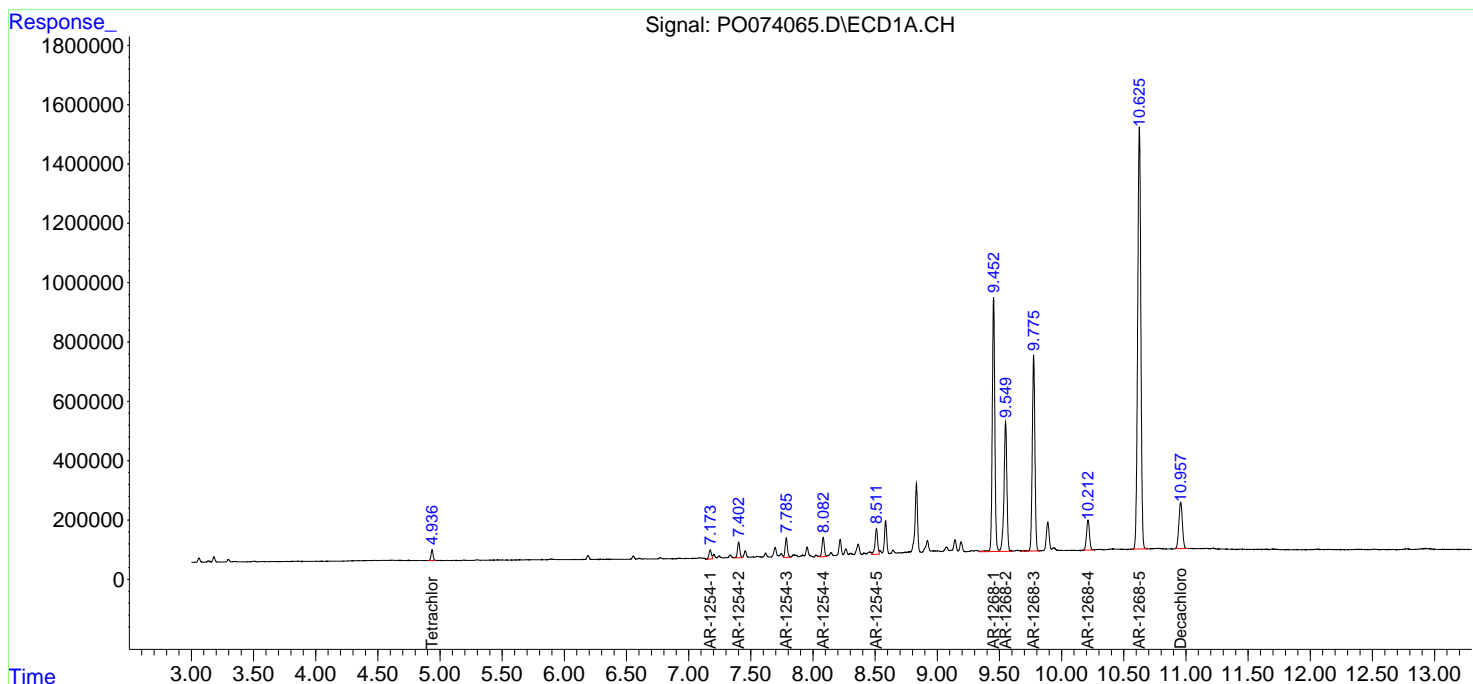
(f)=RT Delta > 1/2 Window (#)=Amounts differ by > 25% (m)=manual int.

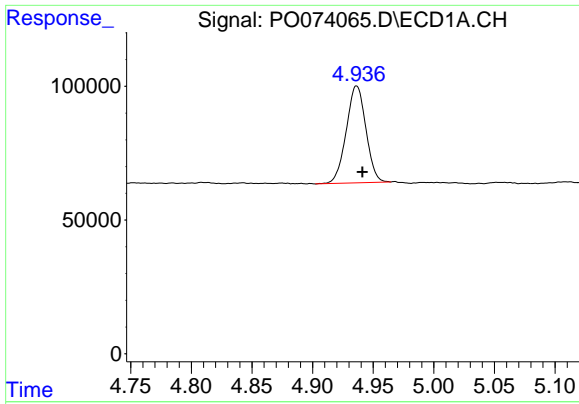
Data Path : Z:\pestpcbsrv\HPCHEM1\ECD\_0\Data\PO122220\  
 Data File : PO074065.D  
 Signal(s) : Signal #1: ECD1A.CH Signal #2: ECD2B.CH  
 Acq On : 23 Dec 2020 2:06  
 Operator : DD\AJ  
 Sample : L5163-02DL 5X  
 Misc :  
 ALS Vial : 51 Sample Multiplier: 1

Instrument :  
 ECD\_O  
 ClientSampled :  
 S23-02-ADL

Integration File signal 1: autoint1.e  
 Integration File signal 2: autoint2.e  
 Quant Time: Dec 23 08:17:23 2020  
 Quant Method : Z:\pestpcbsrv\HPCHEM1\ECD\_0\methods\PO121020.M  
 Quant Title : GC EXTRACTABLES  
 QLast Update : Fri Dec 11 03:58:06 2020  
 Response via : Initial Calibration  
 Integrator: ChemStation 6890 Scale Mode: Small noise peaks clipped

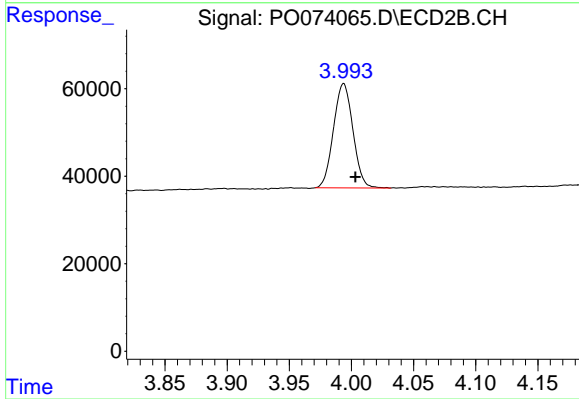
Volume Inj. : 2 µl  
 Signal #1 Phase : ZB-MR1 Signal #2 Phase: ZB-MR2  
 Signal #1 Info : 30Mx0.32mmx 0.50µ Signal #2 Info : 30M x 0.32mm x 0.25µm



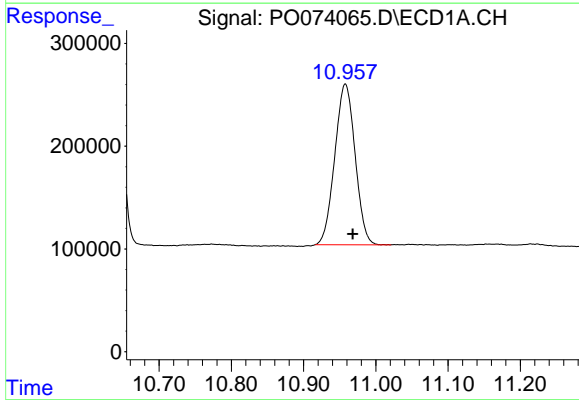


#1 Tetrachloro-m-xylene  
 R.T.: 4.936 min  
 Delta R.T.: -0.005 min  
 Response: 408861  
 Conc: 4.47 ng/ml

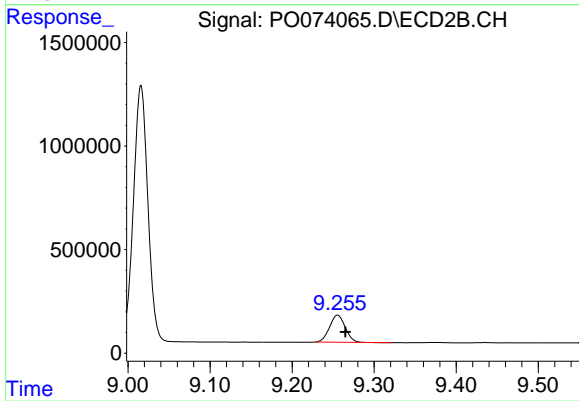
Instrument :  
 ECD\_O  
 ClientSampleId :  
 S23-02-ADL



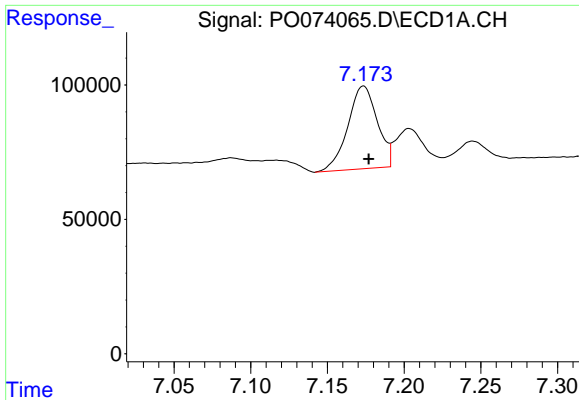
#1 Tetrachloro-m-xylene  
 R.T.: 3.994 min  
 Delta R.T.: -0.009 min  
 Response: 259719  
 Conc: 4.84 ng/ml



#2 Decachlorobiphenyl  
 R.T.: 10.958 min  
 Delta R.T.: -0.010 min  
 Response: 3057787  
 Conc: 37.00 ng/ml

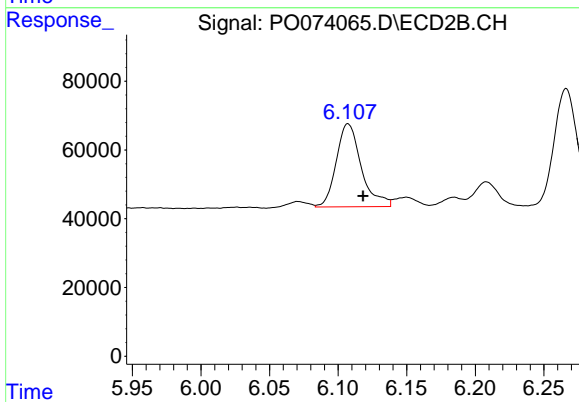


#2 Decachlorobiphenyl  
 R.T.: 9.255 min  
 Delta R.T.: -0.010 min  
 Response: 1736044  
 Conc: 37.10 ng/ml

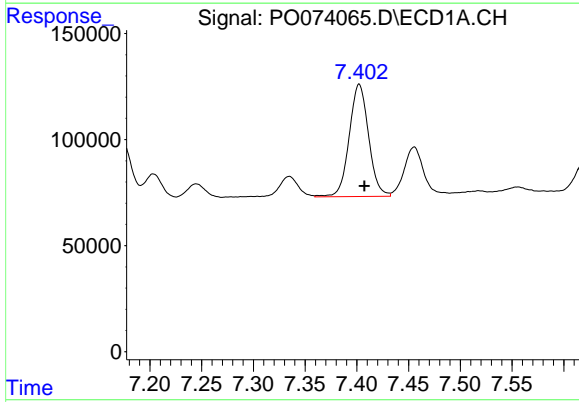


#26 AR-1254-1  
 R.T.: 7.174 min  
 Delta R.T.: -0.004 min  
 Response: 413919  
 Conc: 109.05 ng/ml

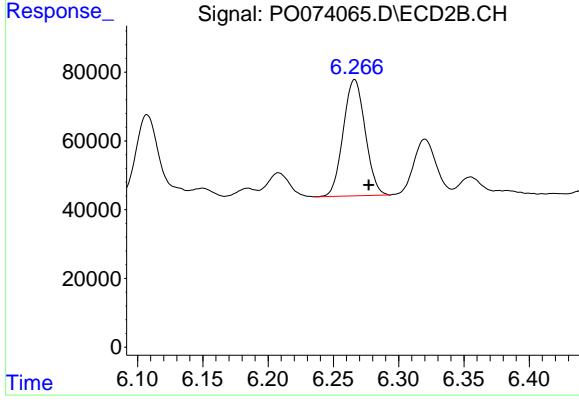
Instrument :  
 ECD\_O  
 ClientSampleId :  
 S23-02-ADL



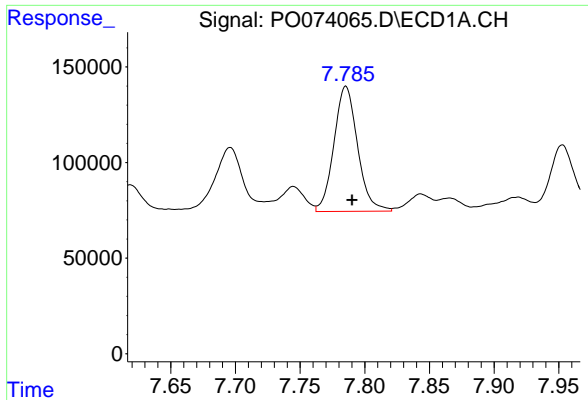
#26 AR-1254-1  
 R.T.: 6.107 min  
 Delta R.T.: -0.011 min  
 Response: 306833  
 Conc: 86.82 ng/ml



#27 AR-1254-2  
 R.T.: 7.402 min  
 Delta R.T.: -0.005 min  
 Response: 690553  
 Conc: 117.13 ng/ml



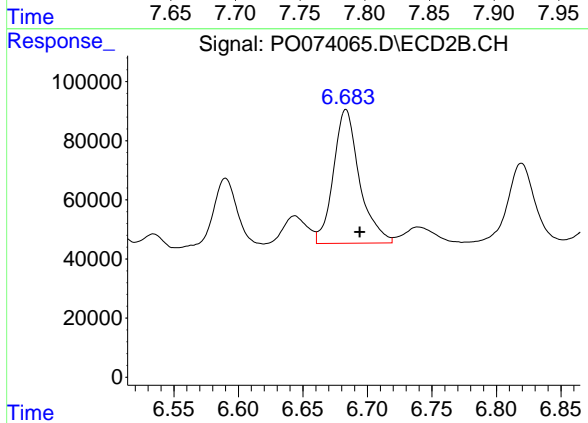
#27 AR-1254-2  
 R.T.: 6.266 min  
 Delta R.T.: -0.011 min  
 Response: 395047  
 Conc: 126.54 ng/ml



#28 AR-1254-3

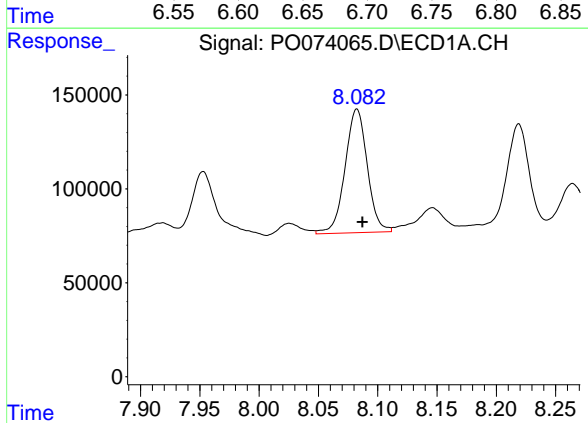
R.T.: 7.785 min  
 Delta R.T.: -0.005 min  
 Response: 832672  
 Conc: 135.90 ng/ml

Instrument :  
 ECD\_O  
 ClientSampleId :  
 S23-02-ADL



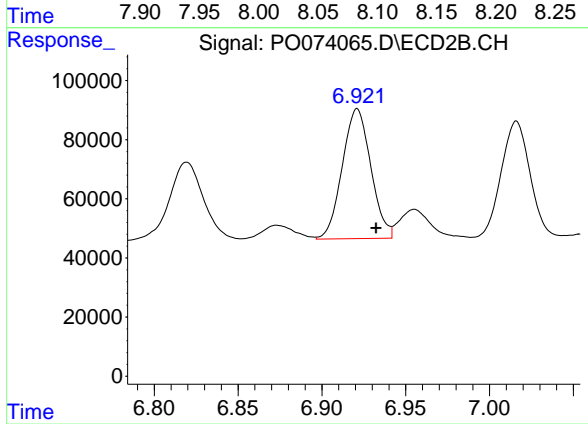
#28 AR-1254-3

R.T.: 6.683 min  
 Delta R.T.: -0.011 min  
 Response: 636656  
 Conc: 130.04 ng/ml



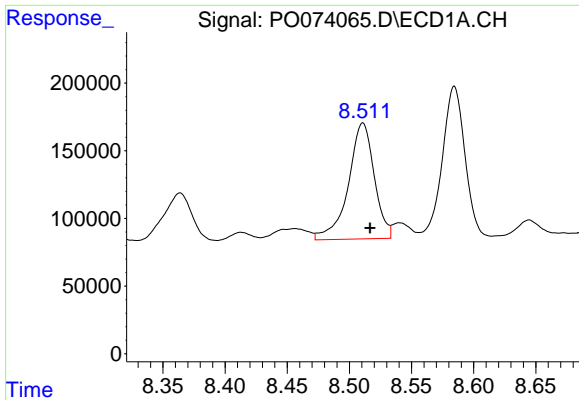
#29 AR-1254-4

R.T.: 8.082 min  
 Delta R.T.: -0.005 min  
 Response: 860564  
 Conc: 164.04 ng/ml



#29 AR-1254-4

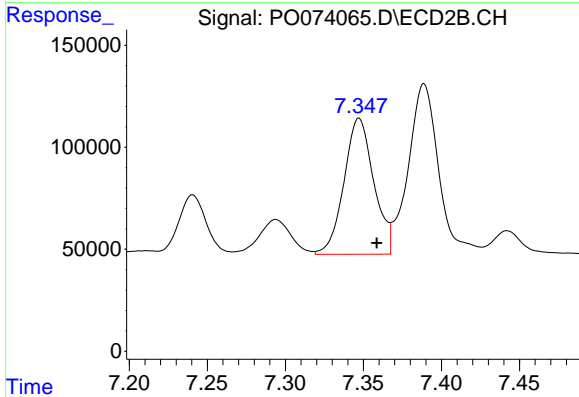
R.T.: 6.921 min  
 Delta R.T.: -0.011 min  
 Response: 521281  
 Conc: 148.64 ng/ml



#30 AR-1254-5

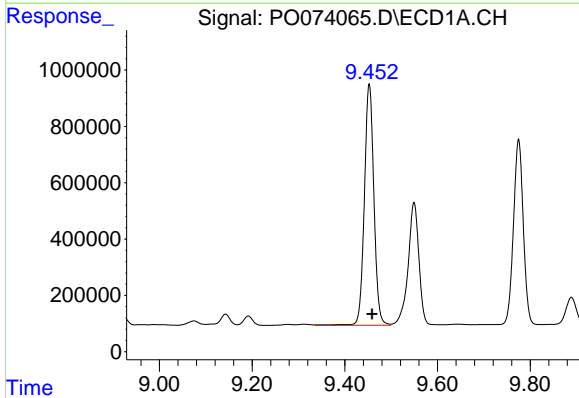
R.T.: 8.511 min  
 Delta R.T.: -0.006 min  
 Response: 1243856  
 Conc: 241.50 ng/ml

Instrument :  
 ECD\_O  
 ClientSampleId :  
 S23-02-ADL



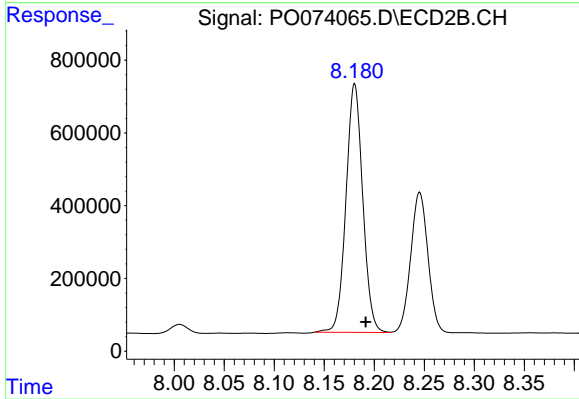
#30 AR-1254-5

R.T.: 7.347 min  
 Delta R.T.: -0.011 min  
 Response: 884672  
 Conc: 200.62 ng/ml



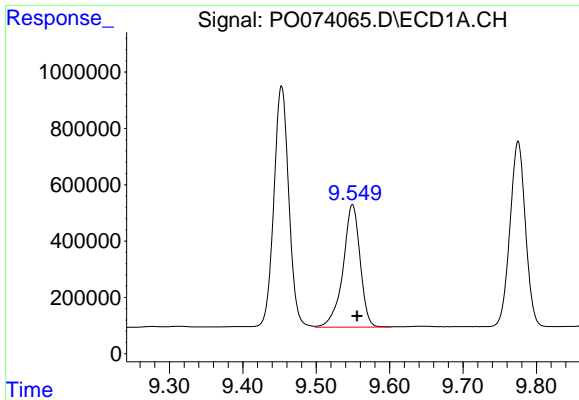
#41 AR-1268-1

R.T.: 9.453 min  
 Delta R.T.: -0.007 min  
 Response: 12213405  
 Conc: 857.49 ng/ml



#41 AR-1268-1

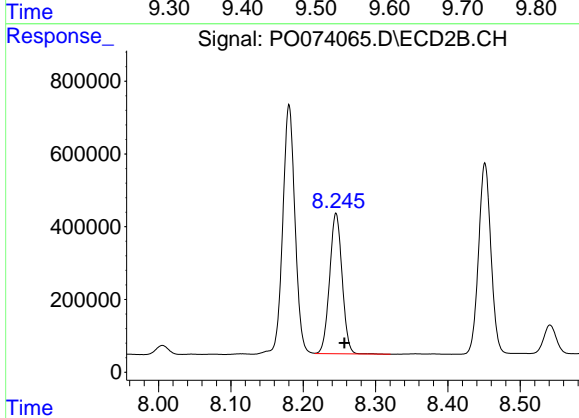
R.T.: 8.180 min  
 Delta R.T.: -0.011 min  
 Response: 7976788  
 Conc: 828.88 ng/ml



#42 AR-1268-2

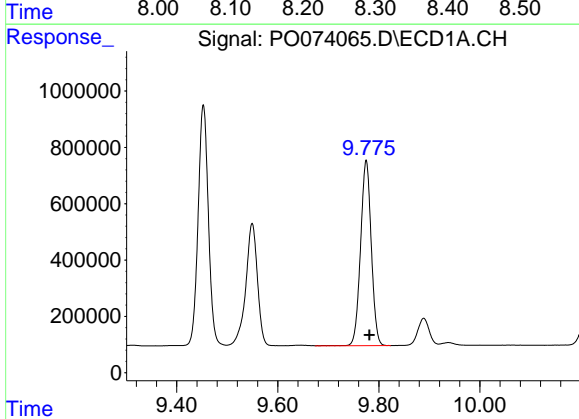
R.T.: 9.549 min  
 Delta R.T.: -0.006 min  
 Response: 7032355  
 Conc: 570.48 ng/ml

Instrument :  
 ECD\_O  
 ClientSampled :  
 S23-02-ADL



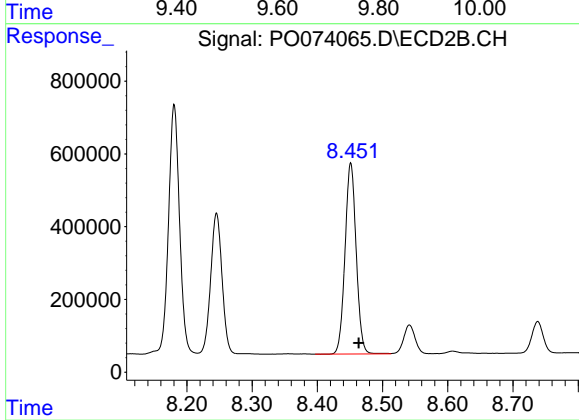
#42 AR-1268-2

R.T.: 8.245 min  
 Delta R.T.: -0.011 min  
 Response: 4645604  
 Conc: 563.88 ng/ml



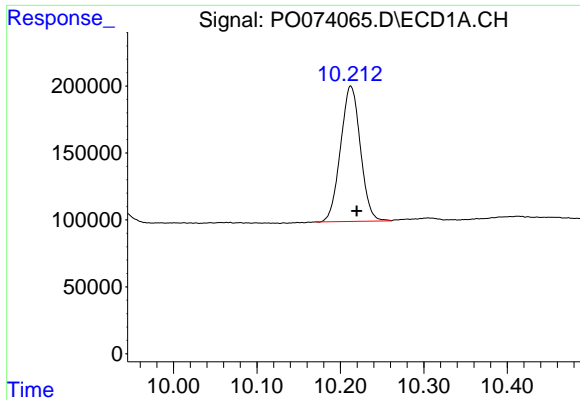
#43 AR-1268-3

R.T.: 9.775 min  
 Delta R.T.: -0.006 min  
 Response: 9670062  
 Conc: 890.99 ng/ml



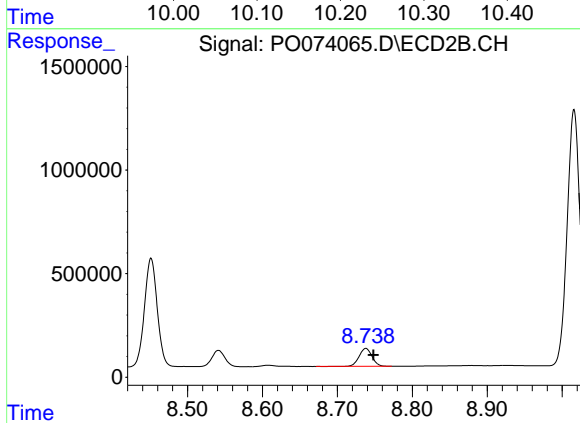
#43 AR-1268-3

R.T.: 8.451 min  
 Delta R.T.: -0.012 min  
 Response: 6233051  
 Conc: 882.76 ng/ml

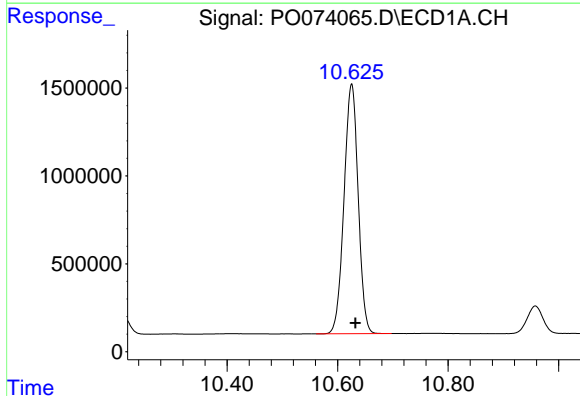


#44 AR-1268-4  
 R.T.: 10.212 min  
 Delta R.T.: -0.007 min  
 Response: 1668966  
 Conc: 356.27 ng/ml

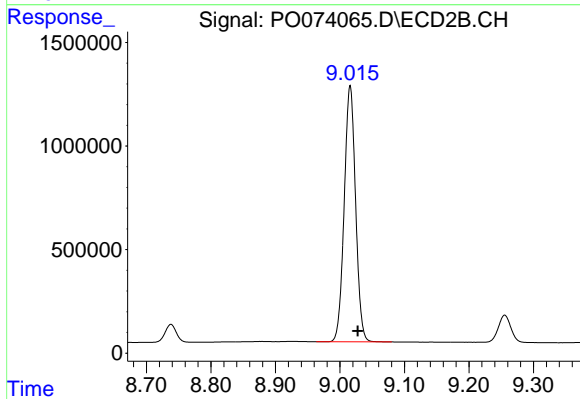
Instrument :  
 ECD\_O  
 ClientSampleId :  
 S23-02-ADL



#44 AR-1268-4  
 R.T.: 8.738 min  
 Delta R.T.: -0.010 min  
 Response: 1033854  
 Conc: 349.27 ng/ml



#45 AR-1268-5  
 R.T.: 10.626 min  
 Delta R.T.: -0.007 min  
 Response: 25256791  
 Conc: 771.76 ng/ml



#45 AR-1268-5  
 R.T.: 9.016 min  
 Delta R.T.: -0.012 min  
 Response: 15120672  
 Conc: 752.64 ng/ml