

Data Path : Z:\pestpcbsrv\HPCHEM1\ECD\_0\Data\PO122220\  
 Data File : PO074081.D  
 Signal(s) : Signal #1: ECD1A.CH Signal #2: ECD2B.CH  
 Acq On : 23 Dec 2020 6:57  
 Operator : DD\AJ  
 Sample : L5168-10  
 Misc :  
 ALS Vial : 65 Sample Multiplier: 1

**Instrument :**  
 ECD\_0  
**ClientSampled :**  
 S16-01-A

**Manual Integrations**  
**APPROVED**  
 Ankita  
 1/4/2021 8:39:13 AM

Integration File signal 1: autoint1.e  
 Integration File signal 2: autoint2.e  
 Quant Time: Dec 23 10:38:30 2020  
 Quant Method : Z:\pestpcbsrv\HPCHEM1\ECD\_0\methods\PO121020.M  
 Quant Title : GC EXTRACTABLES  
 QLast Update : Fri Dec 11 03:58:06 2020  
 Response via : Initial Calibration  
 Integrator: ChemStation 6890 Scale Mode: Small noise peaks clipped

Volume Inj. : 2 µl  
 Signal #1 Phase : ZB-MR1 Signal #2 Phase: ZB-MR2  
 Signal #1 Info : 30Mx0.32mmx 0.50µ Signal #2 Info : 30M x 0.32mm x 0.25µm

Compound	RT#1	RT#2	Resp#1	Resp#2	ng/ml	ng/ml
-----						
System Monitoring Compounds						
1) SA Tetrachlo...	4.934	3.992	1372341	847668	15.010	15.804
2) SA Decachlor...	10.953	9.252	874971	474489	10.588	10.141
Target Compounds						
41) L9 AR-1268-1	9.450	8.178	493801	339467	34.669	35.275
42) L9 AR-1268-2	9.546	8.243	267389	188152	21.691	22.838
43) L9 AR-1268-3	9.772	8.450	681360	427511	62.780	60.547
44) L9 AR-1268-4	10.210	8.736	55673	49045	11.884	16.569m#
45) L9 AR-1268-5	10.622	9.012	1988015	1061072	60.747	52.816
-----						

(f)=RT Delta > 1/2 Window (#)=Amounts differ by > 25% (m)=manual int.

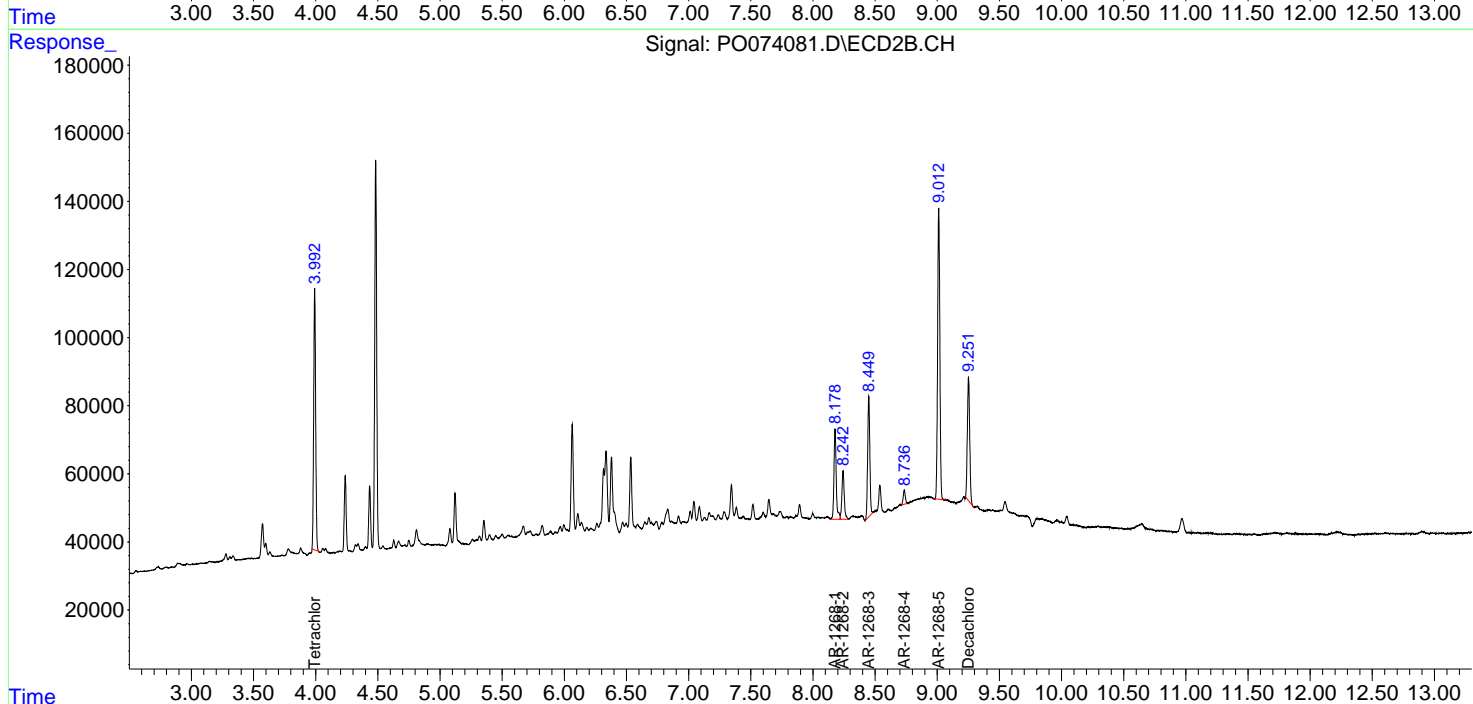
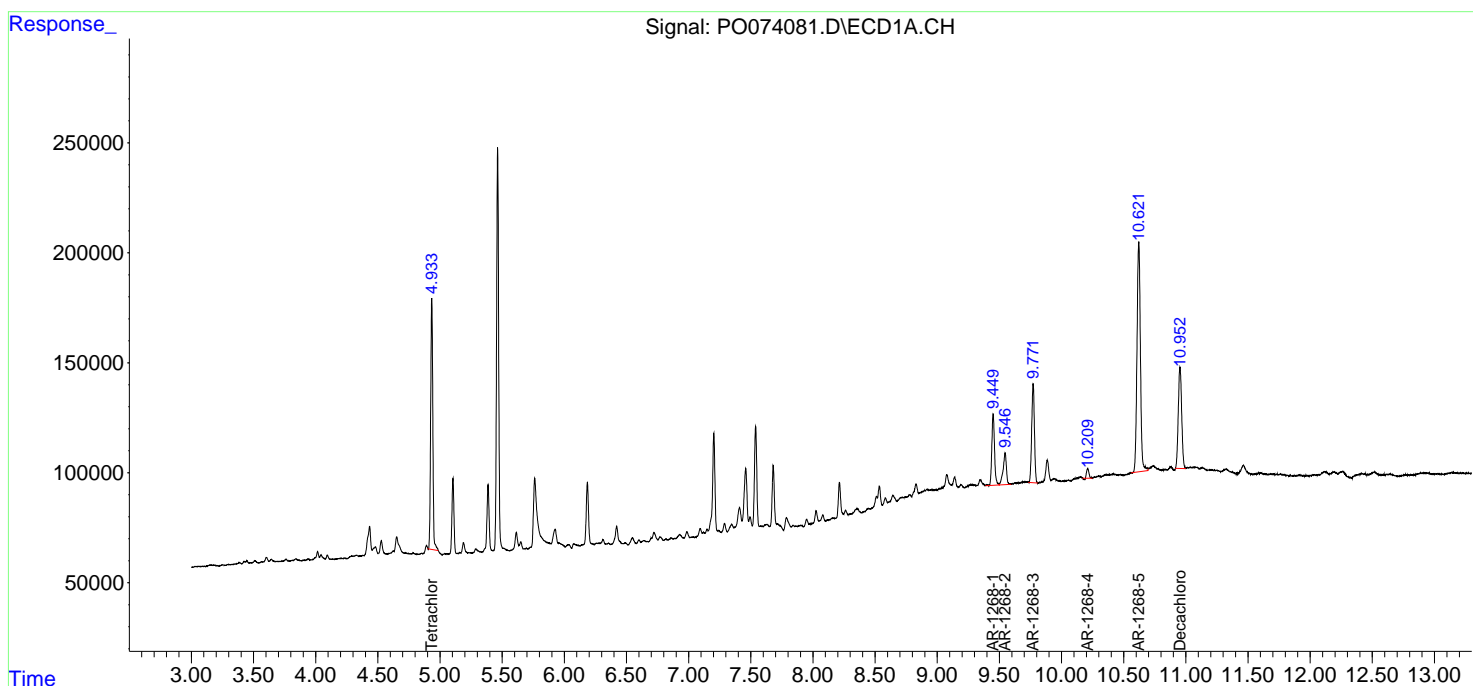
Data Path : Z:\pestpcbsrv\HPCHEM1\ECD\_0\Data\PO122220\  
 Data File : PO074081.D  
 Signal(s) : Signal #1: ECD1A.CH Signal #2: ECD2B.CH  
 Acq On : 23 Dec 2020 6:57  
 Operator : DD\AJ  
 Sample : L5168-10  
 Misc :  
 ALS Vial : 65 Sample Multiplier: 1

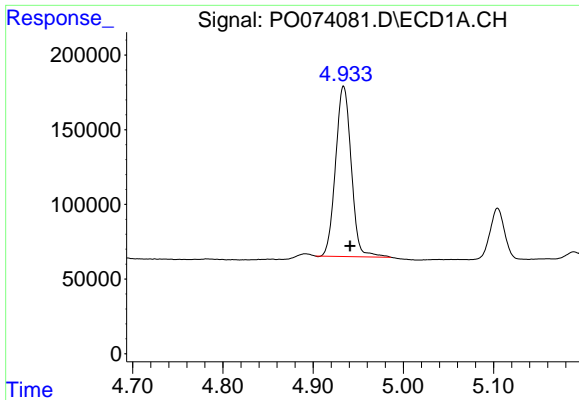
**Instrument :**  
 ECD\_O  
**Client Sampled :**  
 S16-01-A

**Manual Integrations**  
**APPROVED**  
 Ankita  
 1/4/2021 8:39:13 AM

Integration File signal 1: autoint1.e  
 Integration File signal 2: autoint2.e  
 Quant Time: Dec 23 10:38:30 2020  
 Quant Method : Z:\pestpcbsrv\HPCHEM1\ECD\_0\methods\PO121020.M  
 Quant Title : GC EXTRACTABLES  
 QLast Update : Fri Dec 11 03:58:06 2020  
 Response via : Initial Calibration  
 Integrator: ChemStation 6890 Scale Mode: Small noise peaks clipped

Volume Inj. : 2 µl  
 Signal #1 Phase : ZB-MR1 Signal #2 Phase: ZB-MR2  
 Signal #1 Info : 30Mx0.32mmx 0.50µ Signal #2 Info : 30M x 0.32mm x 0.25µm

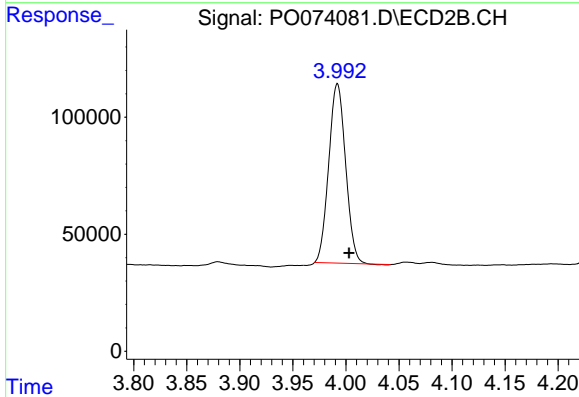




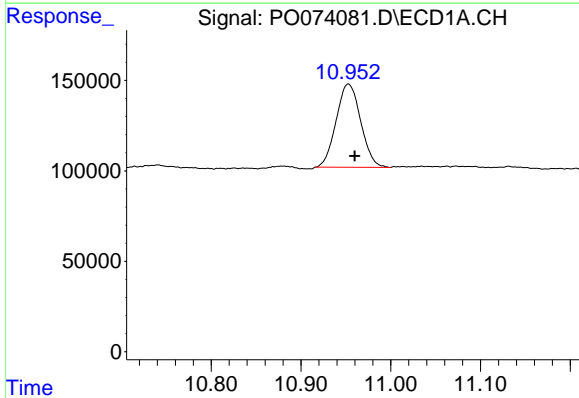
#1 Tetrachloro-m-xylene  
 R.T.: 4.934 min  
 Delta R.T.: -0.007 min  
 Response: 1372341  
 Conc: 15.01 ng/ml

Instrument :  
 ECD\_O  
 ClientSampled :  
 S16-01-A

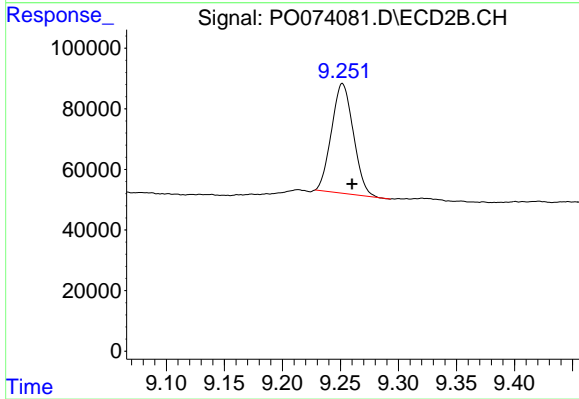
Manual Integrations  
 APPROVED  
 Ankita  
 1/4/2021 8:39:13 AM



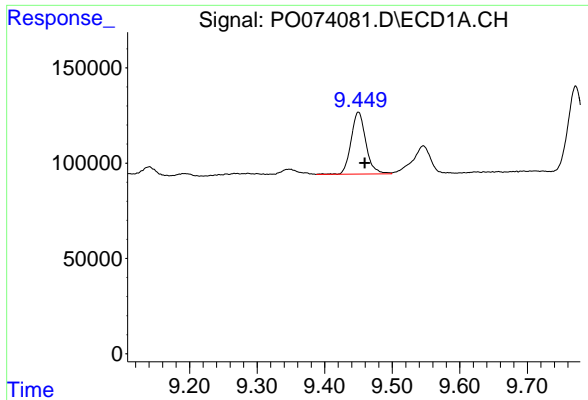
#1 Tetrachloro-m-xylene  
 R.T.: 3.992 min  
 Delta R.T.: -0.011 min  
 Response: 847668  
 Conc: 15.80 ng/ml



#2 Decachlorobiphenyl  
 R.T.: 10.953 min  
 Delta R.T.: -0.007 min  
 Response: 874971  
 Conc: 10.59 ng/ml



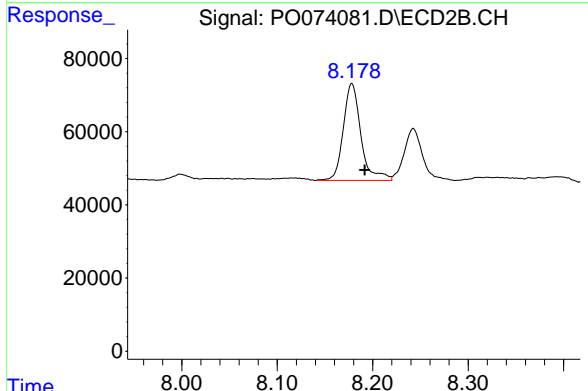
#2 Decachlorobiphenyl  
 R.T.: 9.252 min  
 Delta R.T.: -0.008 min  
 Response: 474489  
 Conc: 10.14 ng/ml



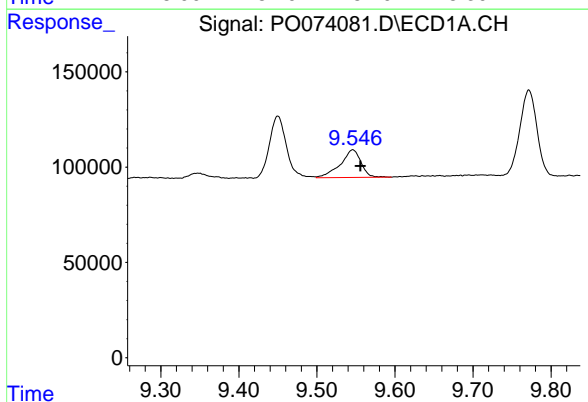
#41 AR-1268-1  
 R.T.: 9.450 min  
 Delta R.T.: -0.009 min  
 Response: 493801  
 Conc: 34.67 ng/ml

**Instrument :**  
 ECD\_O  
**ClientSampled :**  
 S16-01-A

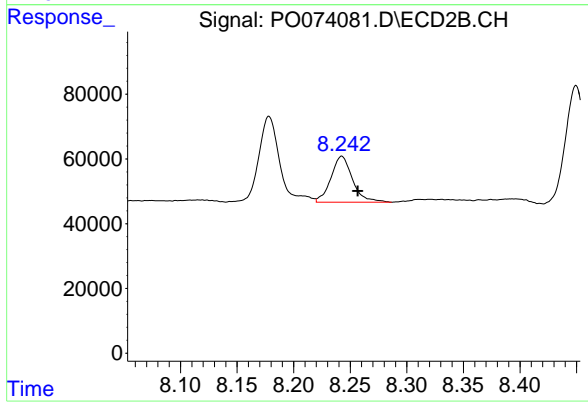
**Manual Integrations**  
**APPROVED**  
 Ankita  
 1/4/2021 8:39:13 AM



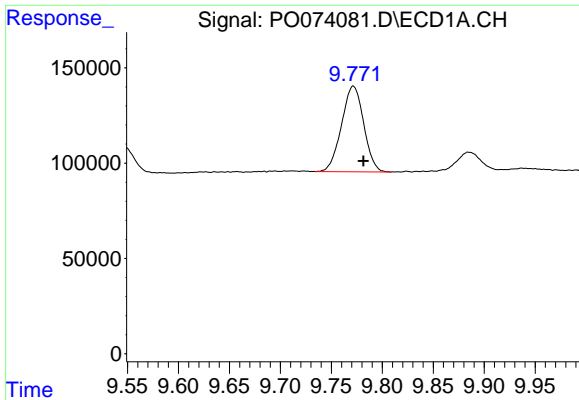
#41 AR-1268-1  
 R.T.: 8.178 min  
 Delta R.T.: -0.013 min  
 Response: 339467  
 Conc: 35.27 ng/ml



#42 AR-1268-2  
 R.T.: 9.546 min  
 Delta R.T.: -0.010 min  
 Response: 267389  
 Conc: 21.69 ng/ml



#42 AR-1268-2  
 R.T.: 8.243 min  
 Delta R.T.: -0.014 min  
 Response: 188152  
 Conc: 22.84 ng/ml

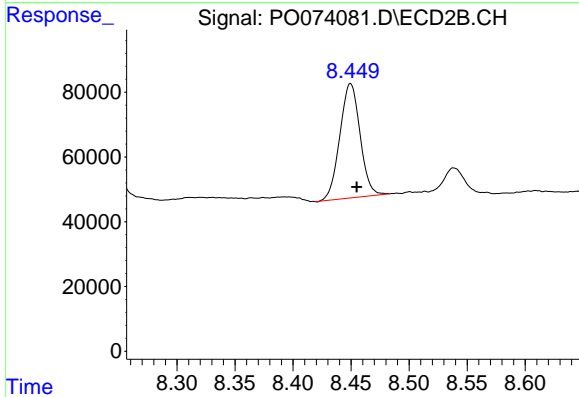


#43 AR-1268-3

R.T.: 9.772 min  
 Delta R.T.: -0.010 min  
 Response: 681360  
 Conc: 62.78 ng/ml

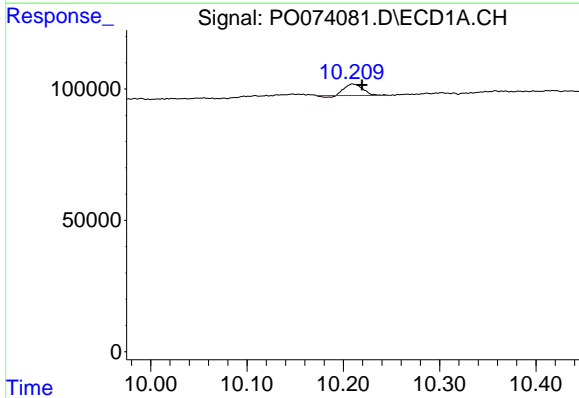
Instrument :  
 ECD\_O  
 ClientSampled :  
 S16-01-A

Manual Integrations  
**APPROVED**  
 Ankita  
 1/4/2021 8:39:13 AM



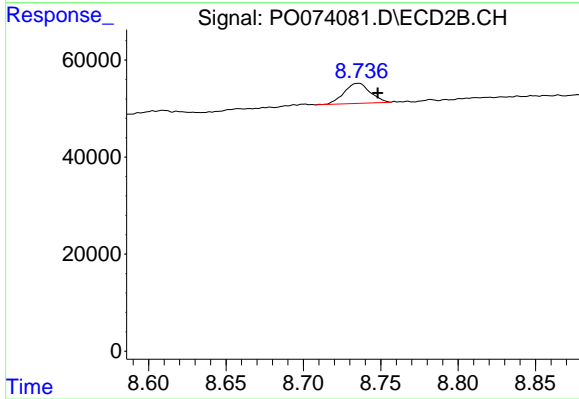
#43 AR-1268-3

R.T.: 8.450 min  
 Delta R.T.: -0.005 min  
 Response: 427511  
 Conc: 60.55 ng/ml



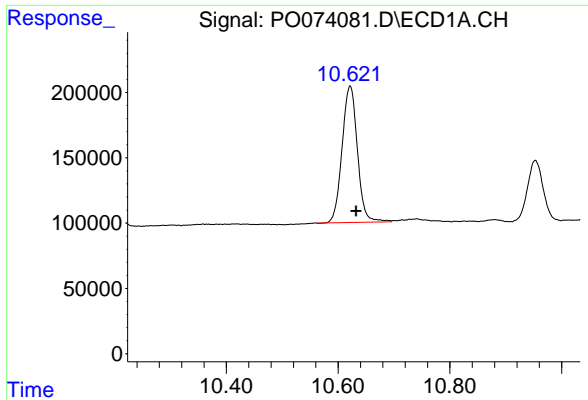
#44 AR-1268-4

R.T.: 10.210 min  
 Delta R.T.: -0.010 min  
 Response: 55673  
 Conc: 11.88 ng/ml



#44 AR-1268-4

R.T.: 8.736 min  
 Delta R.T.: -0.012 min  
 Response: 49045  
 Conc: 16.57 ng/ml m



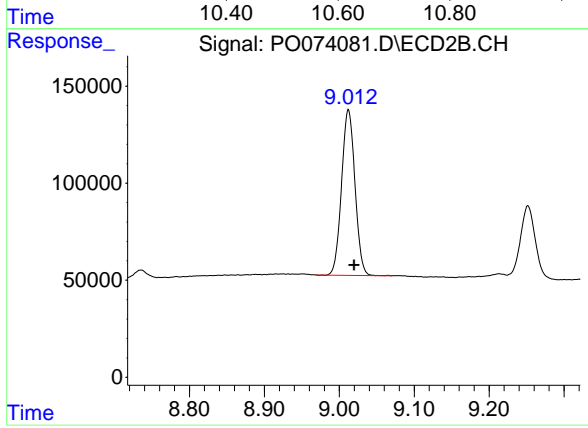
#45 AR-1268-5

R.T.: 10.622 min  
Delta R.T.: -0.010 min  
Response: 1988015  
Conc: 60.75 ng/ml

Instrument :  
ECD\_O  
ClientSampled :  
S16-01-A

Manual Integrations  
APPROVED

Ankita  
1/4/2021 8:39:13 AM



#45 AR-1268-5

R.T.: 9.012 min  
Delta R.T.: -0.008 min  
Response: 1061072  
Conc: 52.82 ng/ml