

Data Path : Z:\pestpcbsrv\HPCHEM1\ECD_0\Data\PO122320\
 Data File : PO074096.D
 Signal(s) : Signal #1: ECD1A.CH Signal #2: ECD2B.CH
 Acq On : 23 Dec 2020 13:26
 Operator : DD\AJ
 Sample : AR1660ICC250
 Misc :
 ALS Vial : 6 Sample Multiplier: 1

Instrument :
 ECD_0
 ClientSampleId :

Integration File signal 1: autoint1.e
 Integration File signal 2: autoint2.e
 Quant Time: Dec 24 00:14:08 2020
 Quant Method : Z:\pestpcbsrv\HPCHEM1\ECD_0\methods\PO122320.M
 Quant Title : GC EXTRACTABLES
 QLast Update : Thu Dec 24 00:12:24 2020
 Response via : Initial Calibration
 Integrator: ChemStation 6890 Scale Mode: Small noise peaks clipped

Volume Inj. : 2 µl
 Signal #1 Phase : ZB-MR1 Signal #2 Phase: ZB-MR2
 Signal #1 Info : 30Mx0.32mmx 0.50µ Signal #2 Info : 30M x 0.32mm x 0.25µm

Compound	RT#1	RT#2	Resp#1	Resp#2	ng/ml	ng/ml

System Monitoring Compounds						
1) SA Tetrachlo...	4.931	3.989	2550732	1423235	25.024	24.986
2) SA Decachlor...	10.950	9.249	2490271	1378508	25.620	25.636
Target Compounds						
3) L1 AR-1016-1	6.255	5.237	1017193	605017	259.222	259.964
4) L1 AR-1016-2	6.279	5.257	1419991	848327	260.141	263.612
5) L1 AR-1016-3	6.345	5.446	849985	454218	259.881	261.099
6) L1 AR-1016-4	6.453	5.499	707006	377586	257.576	265.071
7) L1 AR-1016-5	6.769	5.726	684857	464174	258.509	260.578
31) L7 AR-1260-1	7.947	6.815	1190809	878228	261.173	260.808
32) L7 AR-1260-2	8.215	7.012	1630897	1201894	258.436	257.640
33) L7 AR-1260-3	8.580	7.165	1354264	1005341	257.855	260.144
34) L7 AR-1260-4	8.811	7.644	1333615	842851	264.651	258.185
35) L7 AR-1260-5	9.138	7.891	3039186	2180210	254.868	253.301

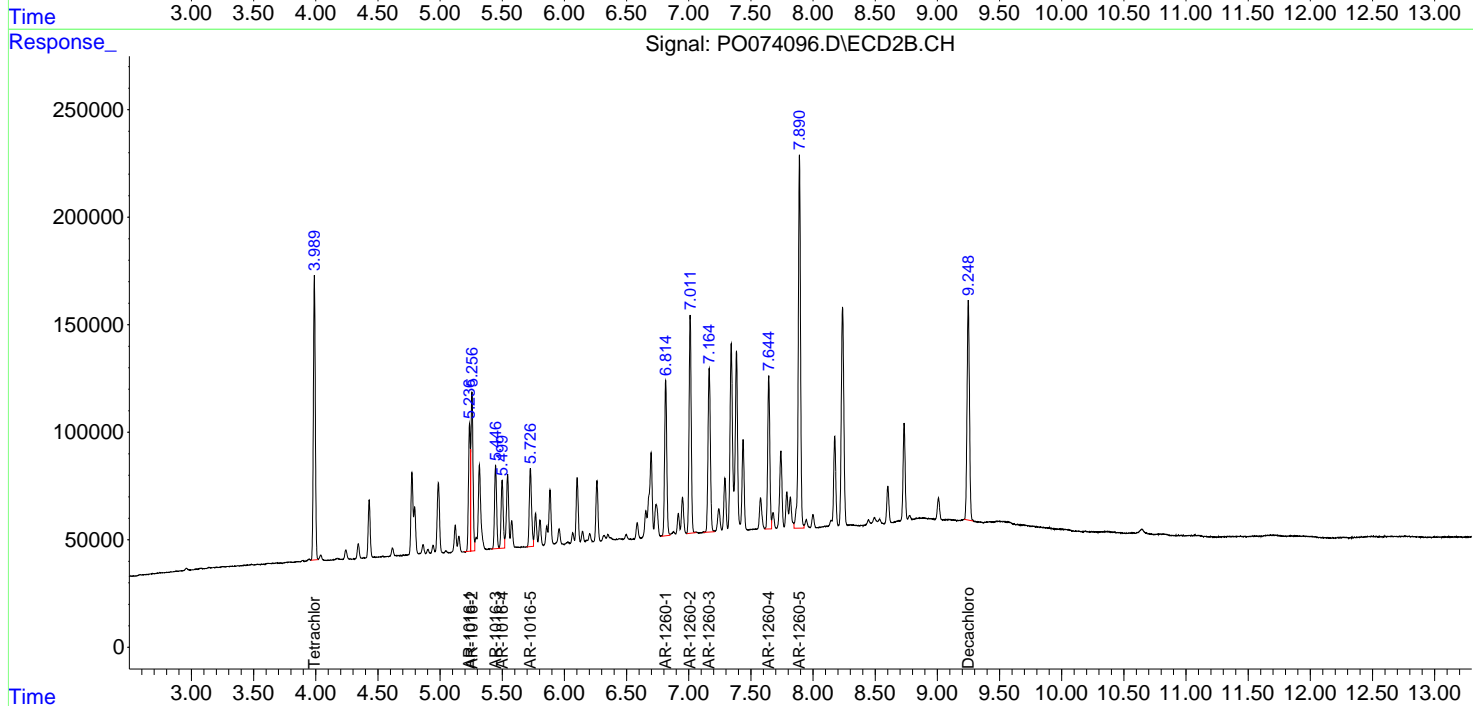
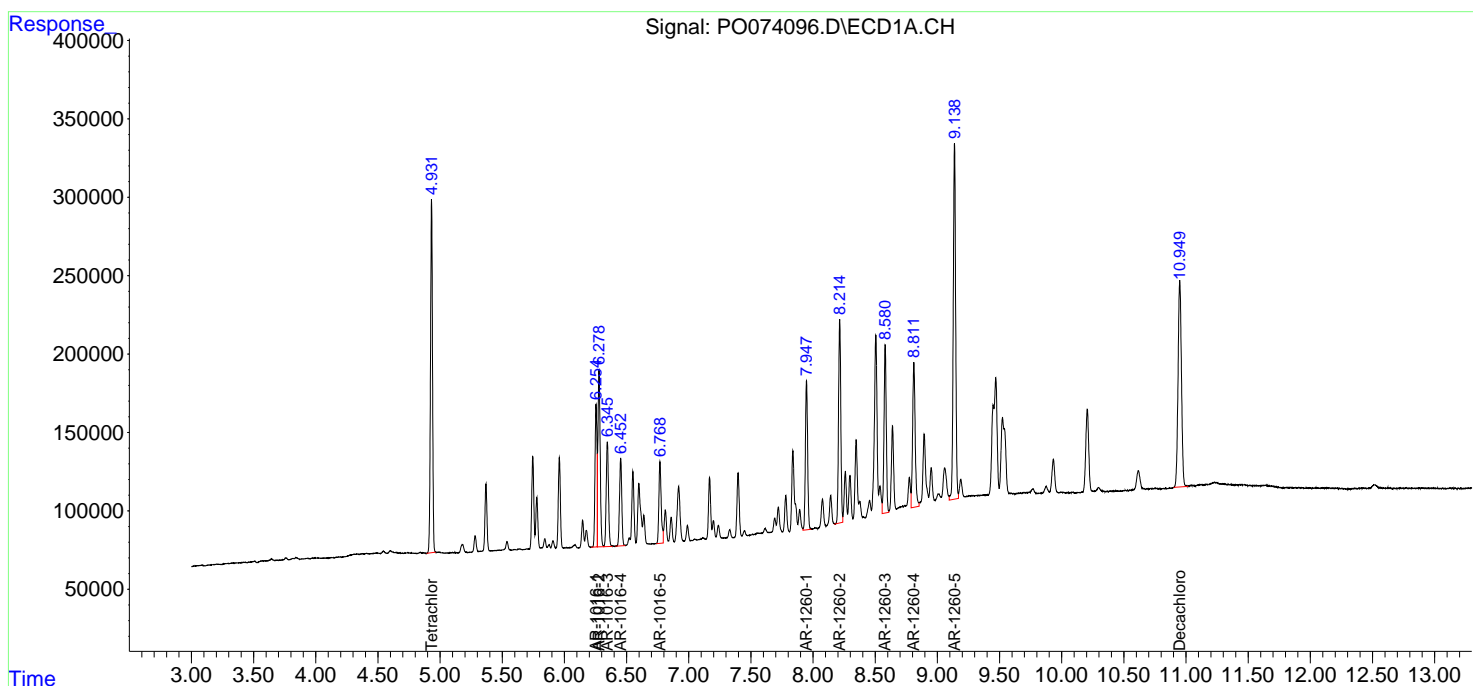
(f)=RT Delta > 1/2 Window (#)=Amounts differ by > 25% (m)=manual int.

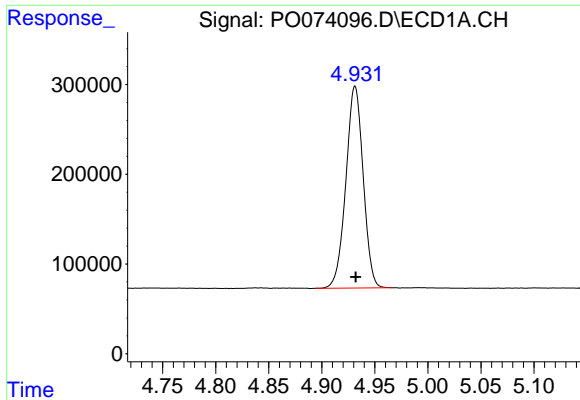
Data Path : Z:\pestpcbsrv\HPCHEM1\ECD_0\Data\PO122320\
 Data File : PO074096.D
 Signal(s) : Signal #1: ECD1A.CH Signal #2: ECD2B.CH
 Acq On : 23 Dec 2020 13:26
 Operator : DD\AJ
 Sample : AR1660ICC250
 Misc :
 ALS Vial : 6 Sample Multiplier: 1

Instrument :
 ECD_O
 ClientSampled :

Integration File signal 1: autoint1.e
 Integration File signal 2: autoint2.e
 Quant Time: Dec 24 00:14:08 2020
 Quant Method : Z:\pestpcbsrv\HPCHEM1\ECD_0\methods\PO122320.M
 Quant Title : GC EXTRACTABLES
 QLast Update : Thu Dec 24 00:12:24 2020
 Response via : Initial Calibration
 Integrator: ChemStation 6890 Scale Mode: Small noise peaks clipped

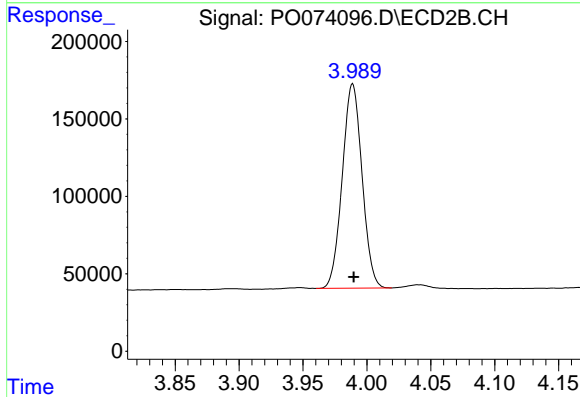
Volume Inj. : 2 µl
 Signal #1 Phase : ZB-MR1 Signal #2 Phase: ZB-MR2
 Signal #1 Info : 30Mx0.32mmx 0.50µ Signal #2 Info : 30M x 0.32mm x 0.25µm



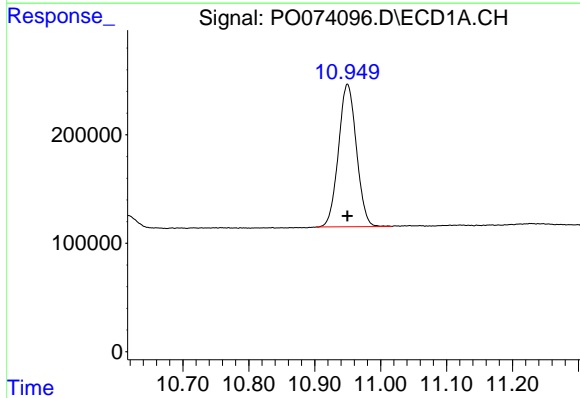


#1 Tetrachloro-m-xylene
 R.T.: 4.931 min
 Delta R.T.: 0.000 min
 Response: 2550732
 Conc: 25.02 ng/ml

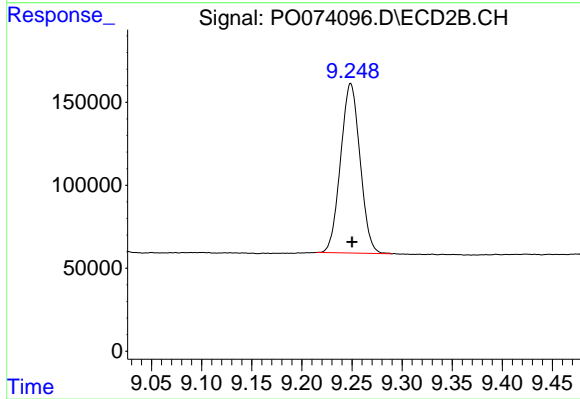
Instrument :
 ECD_O
 ClientSampled :



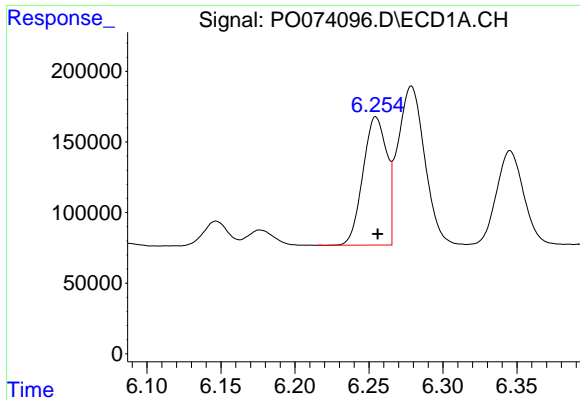
#1 Tetrachloro-m-xylene
 R.T.: 3.989 min
 Delta R.T.: 0.000 min
 Response: 1423235
 Conc: 24.99 ng/ml



#2 Decachlorobiphenyl
 R.T.: 10.950 min
 Delta R.T.: 0.000 min
 Response: 2490271
 Conc: 25.62 ng/ml



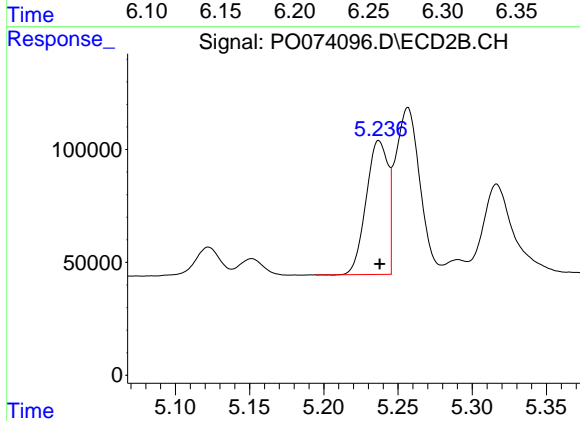
#2 Decachlorobiphenyl
 R.T.: 9.249 min
 Delta R.T.: -0.001 min
 Response: 1378508
 Conc: 25.64 ng/ml



#3 AR-1016-1

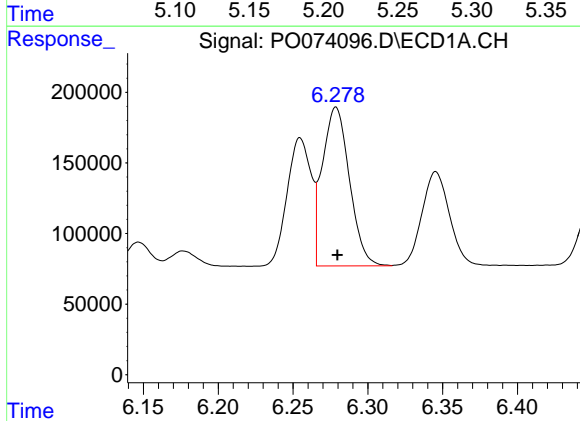
R.T.: 6.255 min
 Delta R.T.: -0.001 min
 Response: 1017193
 Conc: 259.22 ng/ml

Instrument :
 ECD_O
 ClientSampleId :



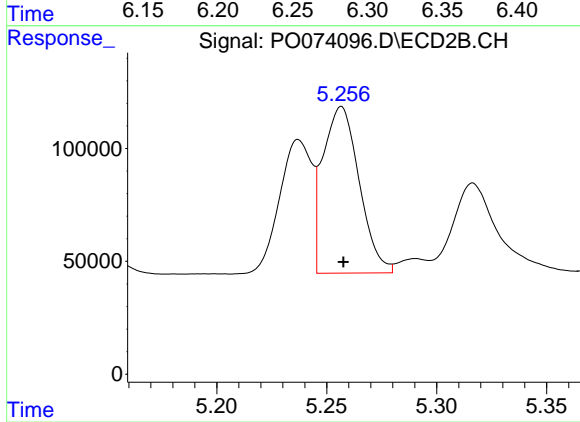
#3 AR-1016-1

R.T.: 5.237 min
 Delta R.T.: 0.000 min
 Response: 605017
 Conc: 259.96 ng/ml



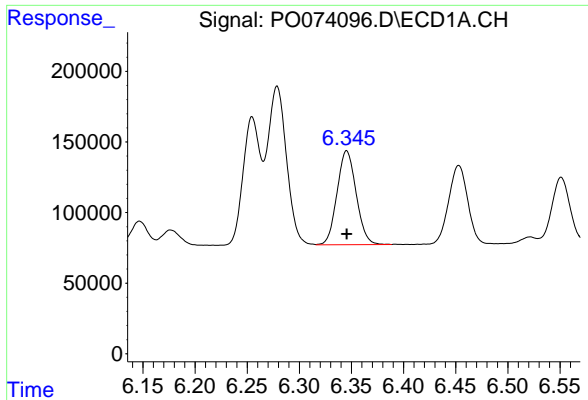
#4 AR-1016-2

R.T.: 6.279 min
 Delta R.T.: 0.000 min
 Response: 1419991
 Conc: 260.14 ng/ml



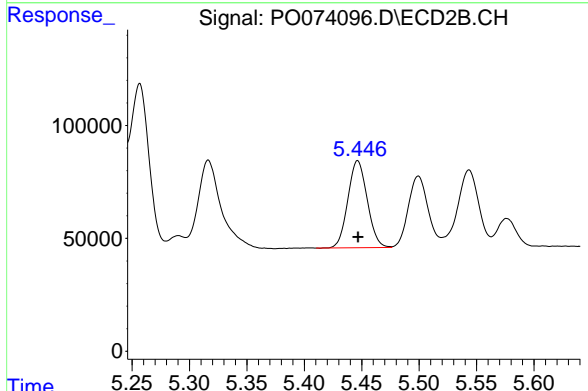
#4 AR-1016-2

R.T.: 5.257 min
 Delta R.T.: 0.000 min
 Response: 848327
 Conc: 263.61 ng/ml

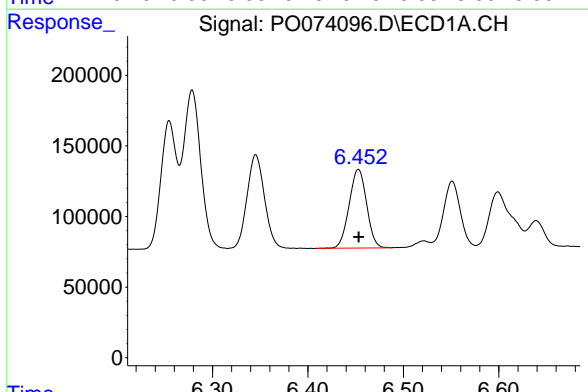


#5 AR-1016-3
 R.T.: 6.345 min
 Delta R.T.: 0.000 min
 Response: 849985
 Conc: 259.88 ng/ml

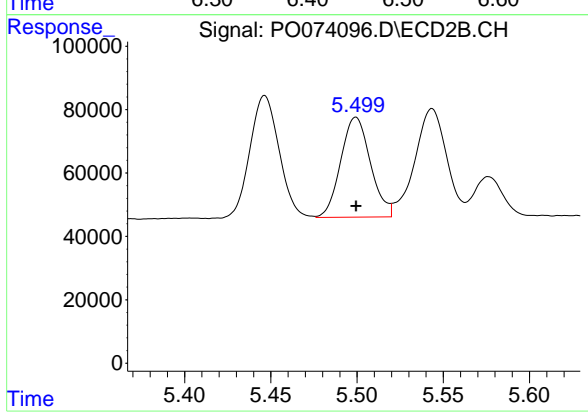
Instrument :
 ECD_O
 ClientSampleId :



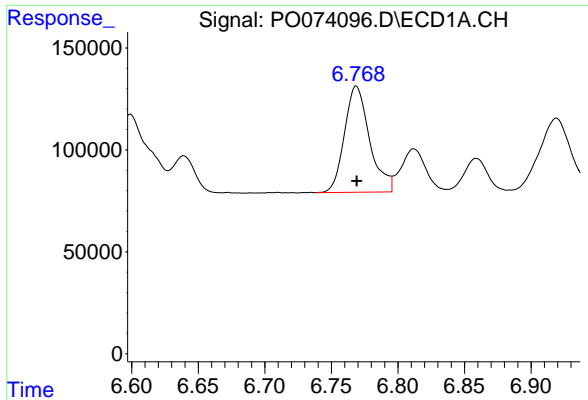
#5 AR-1016-3
 R.T.: 5.446 min
 Delta R.T.: 0.000 min
 Response: 454218
 Conc: 261.10 ng/ml



#6 AR-1016-4
 R.T.: 6.453 min
 Delta R.T.: 0.000 min
 Response: 707006
 Conc: 257.58 ng/ml

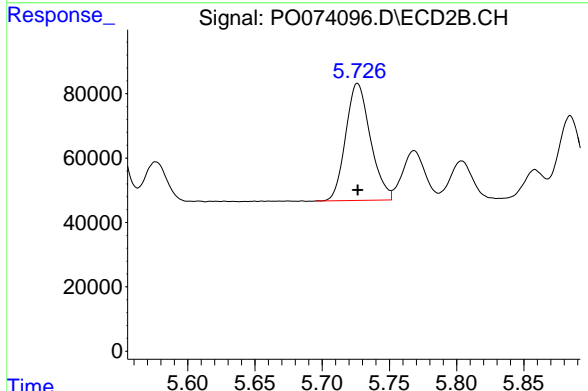


#6 AR-1016-4
 R.T.: 5.499 min
 Delta R.T.: 0.000 min
 Response: 377586
 Conc: 265.07 ng/ml

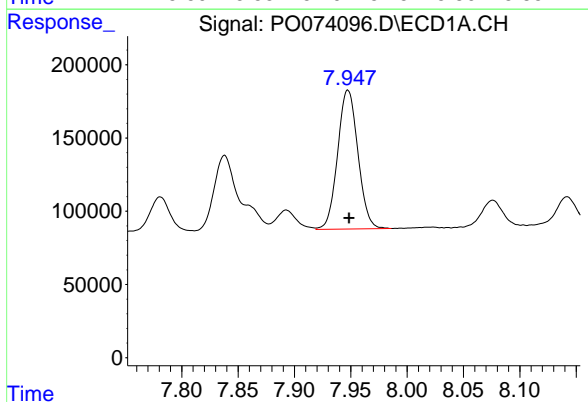


#7 AR-1016-5
 R.T.: 6.769 min
 Delta R.T.: 0.000 min
 Response: 684857
 Conc: 258.51 ng/ml

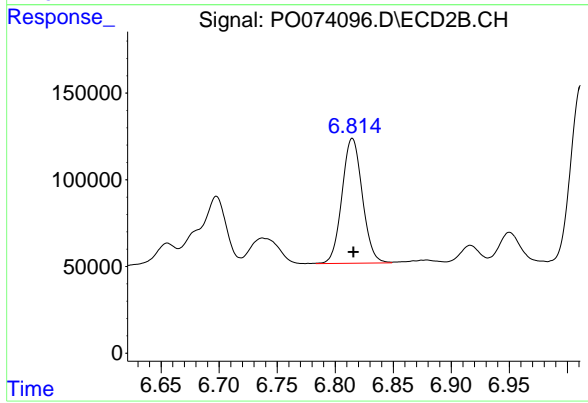
Instrument :
 ECD_O
 ClientSampleId :



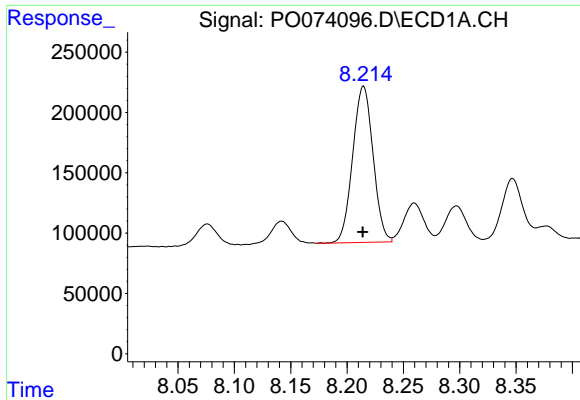
#7 AR-1016-5
 R.T.: 5.726 min
 Delta R.T.: 0.000 min
 Response: 464174
 Conc: 260.58 ng/ml



#31 AR-1260-1
 R.T.: 7.947 min
 Delta R.T.: 0.000 min
 Response: 1190809
 Conc: 261.17 ng/ml



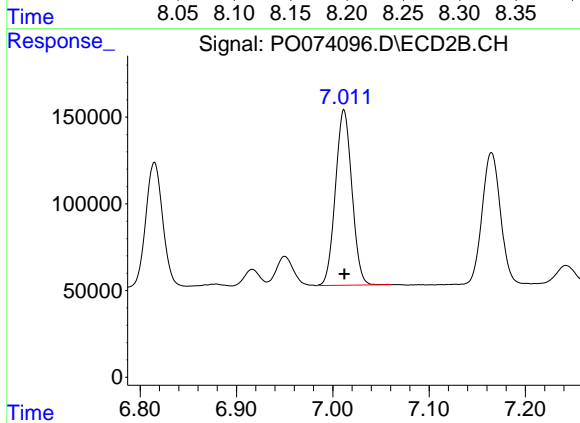
#31 AR-1260-1
 R.T.: 6.815 min
 Delta R.T.: 0.000 min
 Response: 878228
 Conc: 260.81 ng/ml



#32 AR-1260-2

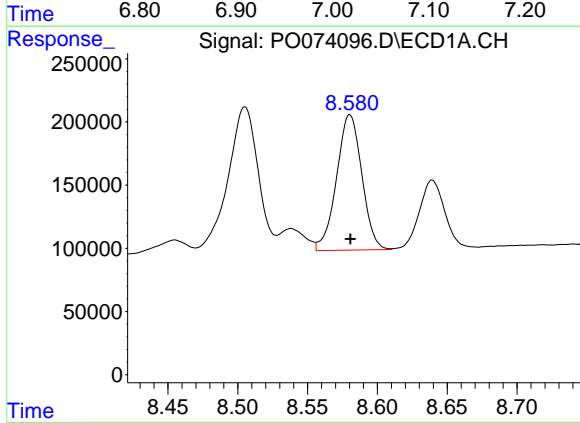
R.T.: 8.215 min
 Delta R.T.: 0.000 min
 Response: 1630897
 Conc: 258.44 ng/ml

Instrument :
 ECD_O
 ClientSampleId :



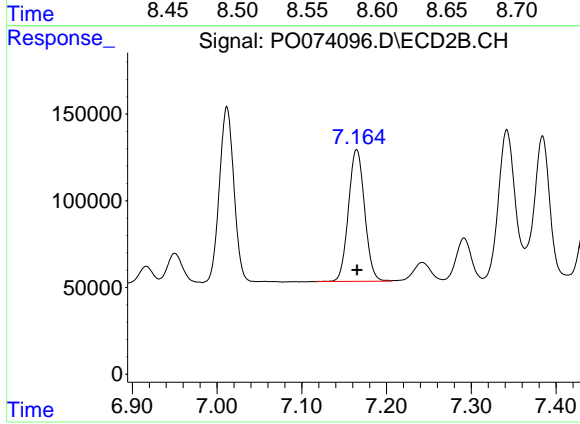
#32 AR-1260-2

R.T.: 7.012 min
 Delta R.T.: 0.000 min
 Response: 1201894
 Conc: 257.64 ng/ml



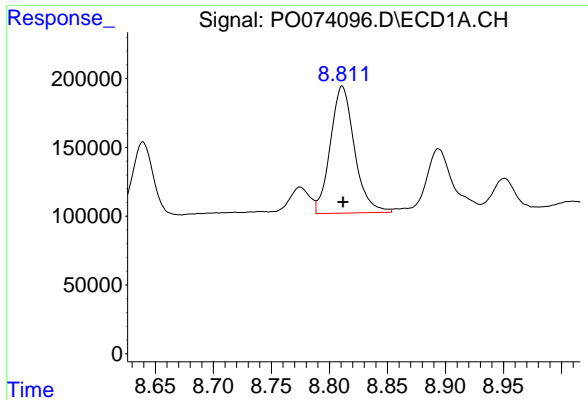
#33 AR-1260-3

R.T.: 8.580 min
 Delta R.T.: 0.000 min
 Response: 1354264
 Conc: 257.85 ng/ml



#33 AR-1260-3

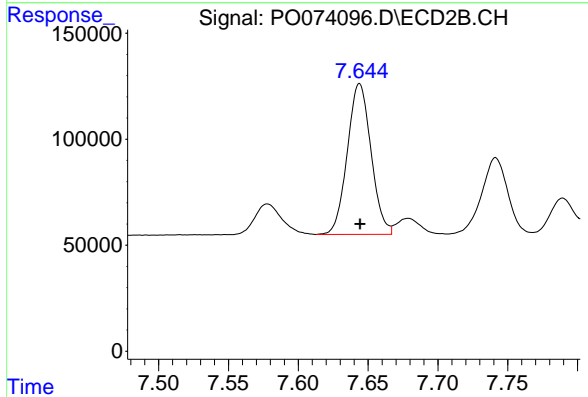
R.T.: 7.165 min
 Delta R.T.: 0.000 min
 Response: 1005341
 Conc: 260.14 ng/ml



#34 AR-1260-4

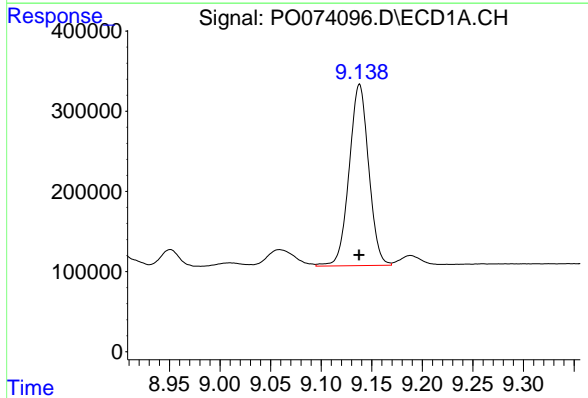
R.T.: 8.811 min
 Delta R.T.: 0.000 min
 Response: 1333615
 Conc: 264.65 ng/ml

Instrument :
 ECD_O
 ClientSampleId :



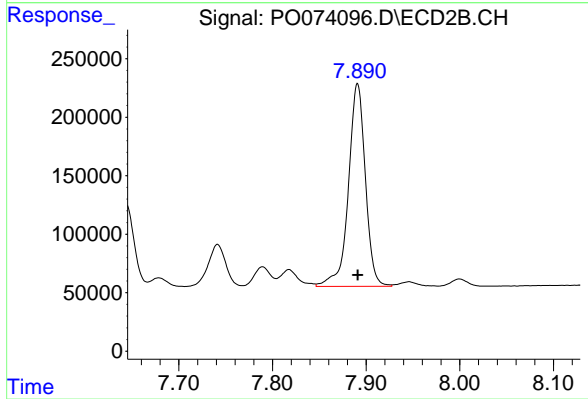
#34 AR-1260-4

R.T.: 7.644 min
 Delta R.T.: 0.000 min
 Response: 842851
 Conc: 258.18 ng/ml



#35 AR-1260-5

R.T.: 9.138 min
 Delta R.T.: 0.000 min
 Response: 3039186
 Conc: 254.87 ng/ml



#35 AR-1260-5

R.T.: 7.891 min
 Delta R.T.: 0.000 min
 Response: 2180210
 Conc: 253.30 ng/ml