

Data Path : Z:\pestpcbsrv\HPCHEM1\ECD_0\Data\PO122320\
 Data File : PO074158.D
 Signal(s) : Signal #1: ECD1A.CH Signal #2: ECD2B.CH
 Acq On : 24 Dec 2020 9:06
 Operator : DD\AJ
 Sample : PB133751BL
 Misc :
 ALS Vial : 5 Sample Multiplier: 1

Instrument :
 ECD_0
 ClientSampleId :

Integration File signal 1: autoint1.e
 Integration File signal 2: autoint2.e
 Quant Time: Dec 24 11:29:41 2020
 Quant Method : Z:\pestpcbsrv\HPCHEM1\ECD_0\methods\PO122320.M
 Quant Title : GC EXTRACTABLES
 QLast Update : Thu Dec 24 01:16:32 2020
 Response via : Initial Calibration
 Integrator: ChemStation 6890 Scale Mode: Small noise peaks clipped

Volume Inj. : 2 µl
 Signal #1 Phase : ZB-MR2 Signal #2 Phase: ZB-MR2
 Signal #1 Info : 30Mx0.32mmx 0.50µ Signal #2 Info : 30M x 0.32mm x 0.25µm

	Compound	RT#1	RT#2	Resp#1	Resp#2	ng/ml	ng/ml

System Monitoring Compounds							
1)	SA Tetrachlo...	4.933	3.991	2407939	1414830	23.616	24.661
2)	SA Decachlor...	10.953	9.251	2045399	1119785	21.003	20.829
Target Compounds							
9)	L2 AR-1221-2	5.286	0.000	68703	0	83.432	N.D. #
20)	L4 AR-1242-5	7.212f	6.127f	91204	219448	40.949	139.460 #
24)	L5 AR-1248-4	7.212	0.000	91204	0	22.726	N.D. #
25)	L5 AR-1248-5	7.212f	6.127f	91204	219448	23.998	95.472 #
26)	L6 AR-1254-1	7.176	6.127f	569080	219448	147.415	63.448 #
29)	L6 AR-1254-4	8.074	0.000	307539	0	58.639	N.D. #
33)	L7 AR-1260-3	0.000	7.161	0	53641	N.D.	13.690 #
34)	L7 AR-1260-4	8.827f	0.000	495436	0	97.511	N.D. #

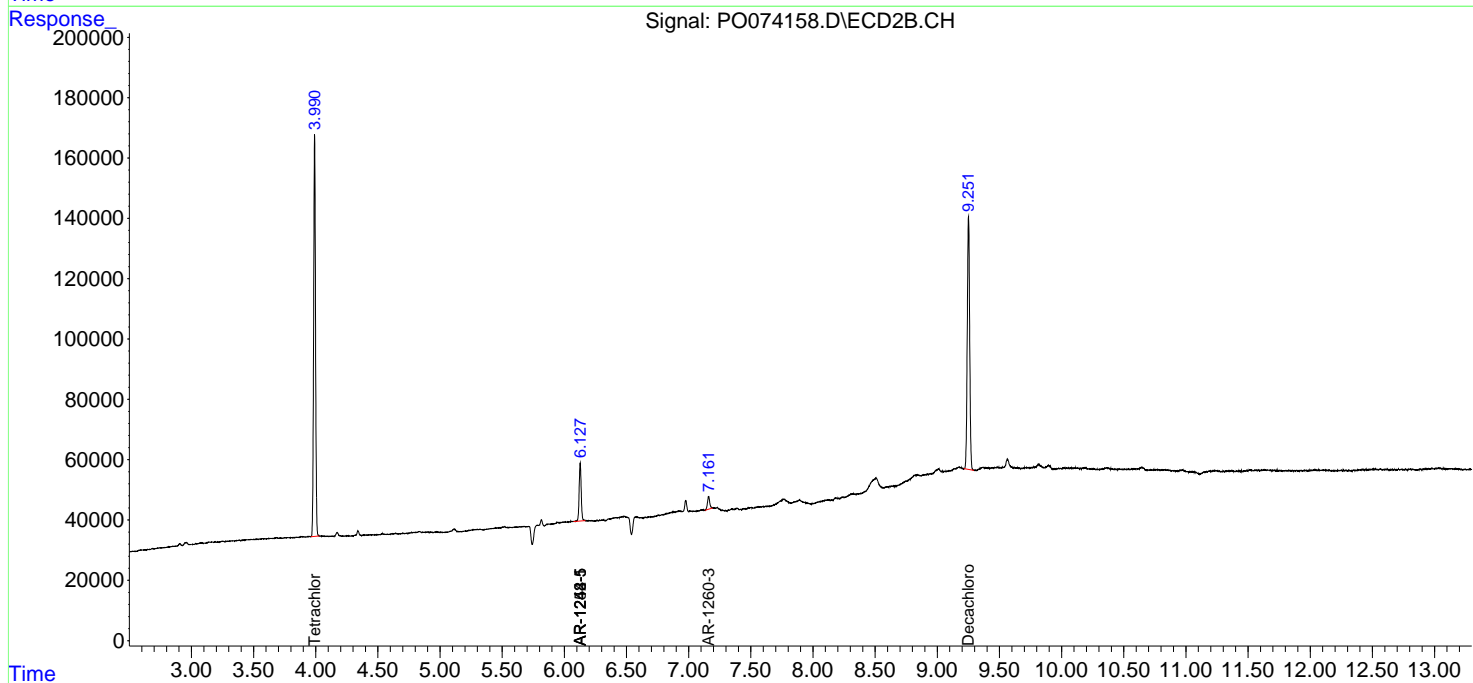
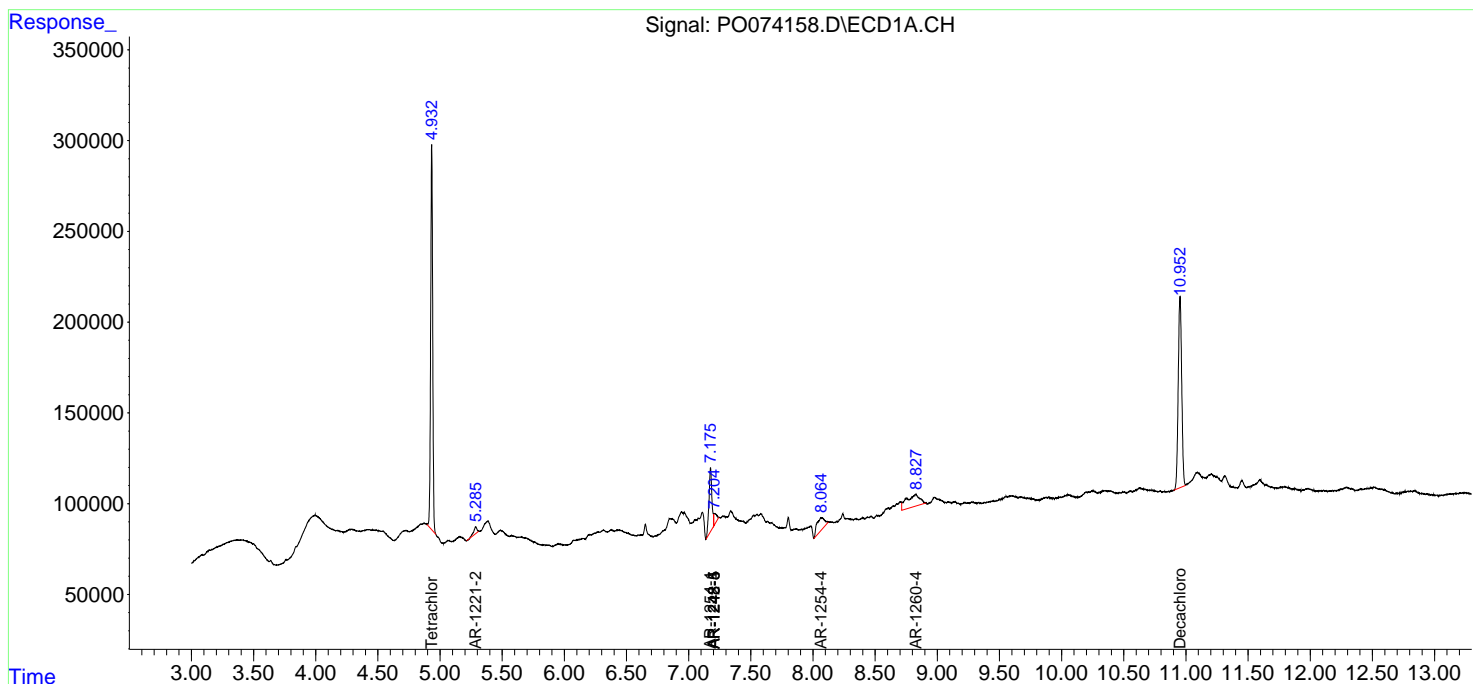
(f)=RT Delta > 1/2 Window (#)=Amounts differ by > 25% (m)=manual int.

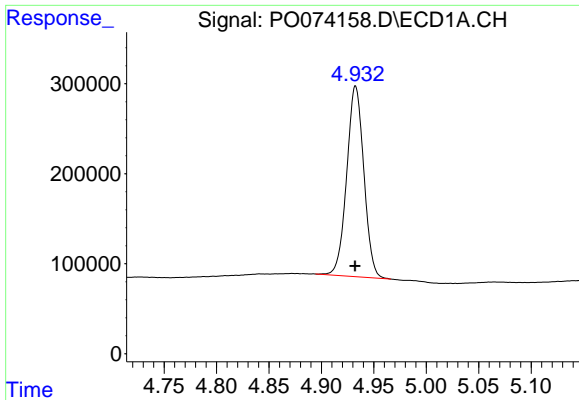
Data Path : Z:\pestpcbsrv\HPCHEM1\ECD_0\Data\PO122320\
 Data File : PO074158.D
 Signal(s) : Signal #1: ECD1A.CH Signal #2: ECD2B.CH
 Acq On : 24 Dec 2020 9:06
 Operator : DD\AJ
 Sample : PB133751BL
 Misc :
 ALS Vial : 5 Sample Multiplier: 1

Instrument :
 ECD_O
 ClientSampled :

Integration File signal 1: autoint1.e
 Integration File signal 2: autoint2.e
 Quant Time: Dec 24 11:29:41 2020
 Quant Method : Z:\pestpcbsrv\HPCHEM1\ECD_0\methods\PO122320.M
 Quant Title : GC EXTRACTABLES
 QLast Update : Thu Dec 24 01:16:32 2020
 Response via : Initial Calibration
 Integrator: ChemStation 6890 Scale Mode: Small noise peaks clipped

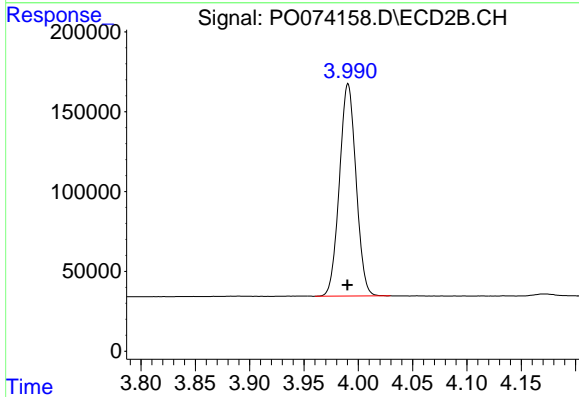
Volume Inj. : 2 µl
 Signal #1 Phase : ZB-MR1 Signal #2 Phase: ZB-MR2
 Signal #1 Info : 30Mx0.32mmx 0.50µ Signal #2 Info : 30M x 0.32mm x 0.25µm



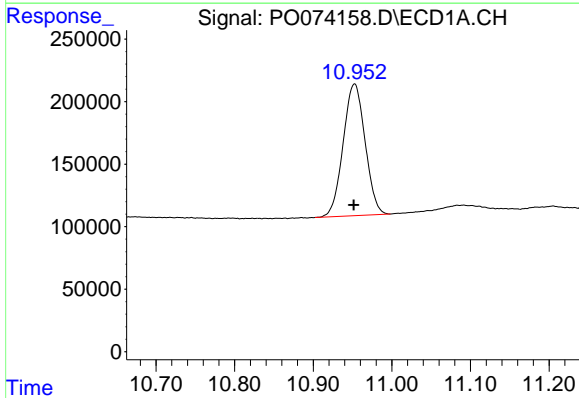


#1 Tetrachloro-m-xylene
 R.T.: 4.933 min
 Delta R.T.: 0.000 min
 Response: 2407939
 Conc: 23.62 ng/ml

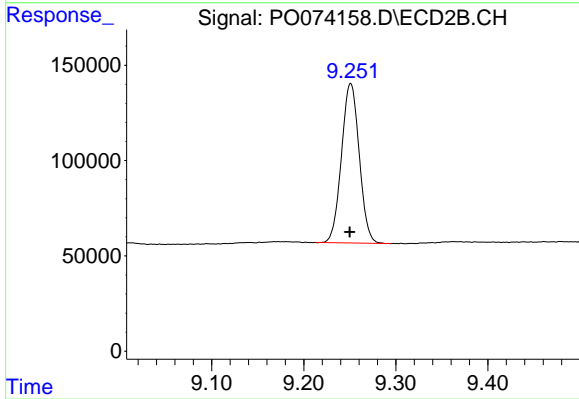
Instrument :
 ECD_O
 ClientSampled :



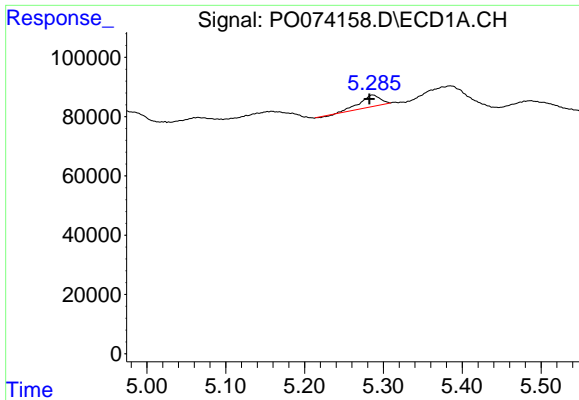
#1 Tetrachloro-m-xylene
 R.T.: 3.991 min
 Delta R.T.: 0.000 min
 Response: 1414830
 Conc: 24.66 ng/ml



#2 Decachlorobiphenyl
 R.T.: 10.953 min
 Delta R.T.: 0.000 min
 Response: 2045399
 Conc: 21.00 ng/ml

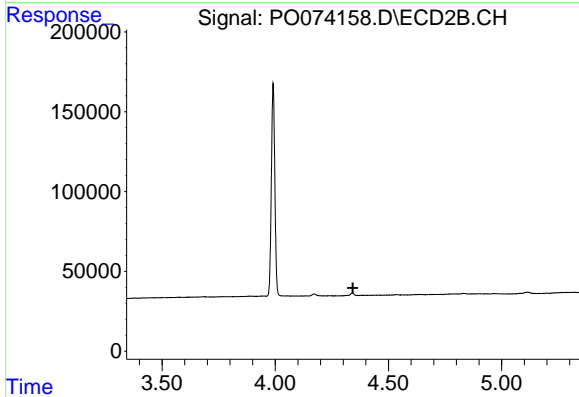


#2 Decachlorobiphenyl
 R.T.: 9.251 min
 Delta R.T.: 0.001 min
 Response: 1119785
 Conc: 20.83 ng/ml

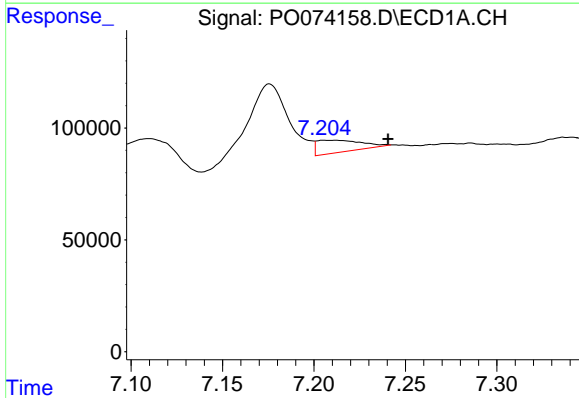


#9 AR-1221-2
 R.T.: 5.286 min
 Delta R.T.: 0.004 min
 Response: 68703
 Conc: 83.43 ng/ml

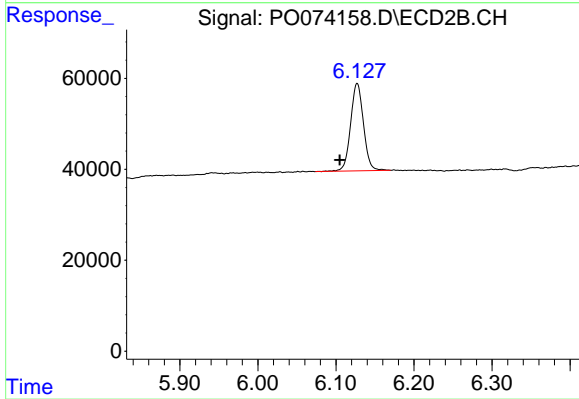
Instrument :
 ECD_O
 ClientSampled :



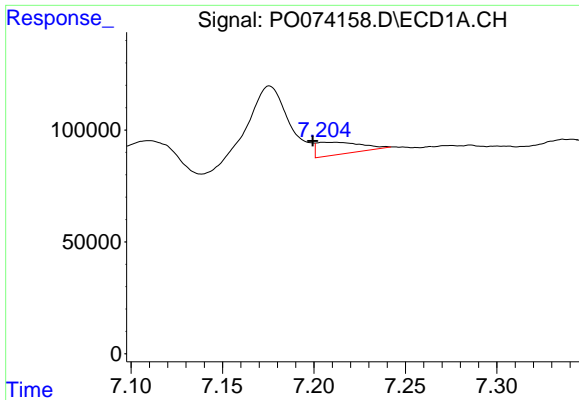
#9 AR-1221-2
 R.T.: 0.000 min
 Exp R.T. : 4.343 min
 Response: 0
 Conc: N.D.



#20 AR-1242-5
 R.T.: 7.212 min
 Delta R.T.: -0.029 min
 Response: 91204
 Conc: 40.95 ng/ml

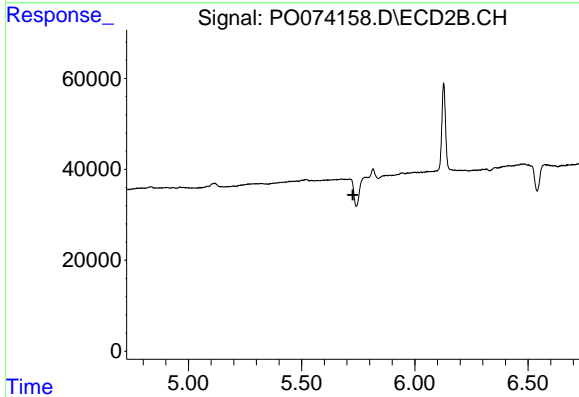


#20 AR-1242-5
 R.T.: 6.127 min
 Delta R.T.: 0.022 min
 Response: 219448
 Conc: 139.46 ng/ml

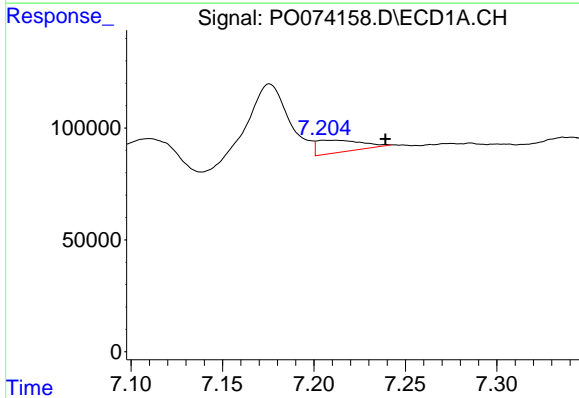


#24 AR-1248-4
 R.T.: 7.212 min
 Delta R.T.: 0.012 min
 Response: 91204
 Conc: 22.73 ng/ml

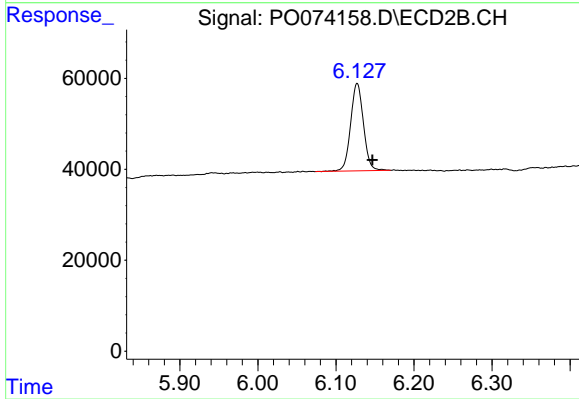
Instrument :
 ECD_O
 ClientSampled :



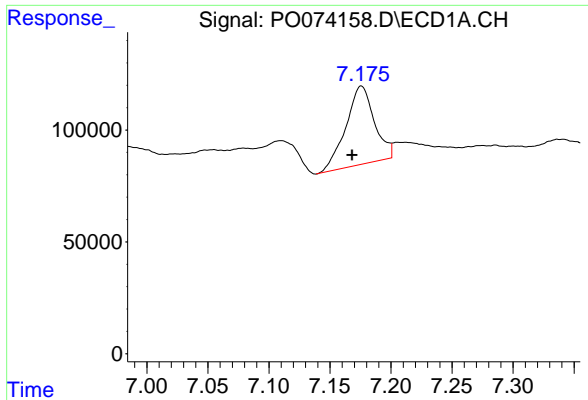
#24 AR-1248-4
 R.T.: 0.000 min
 Exp R.T. : 5.727 min
 Response: 0
 Conc: N.D.



#25 AR-1248-5
 R.T.: 7.212 min
 Delta R.T.: -0.027 min
 Response: 91204
 Conc: 24.00 ng/ml



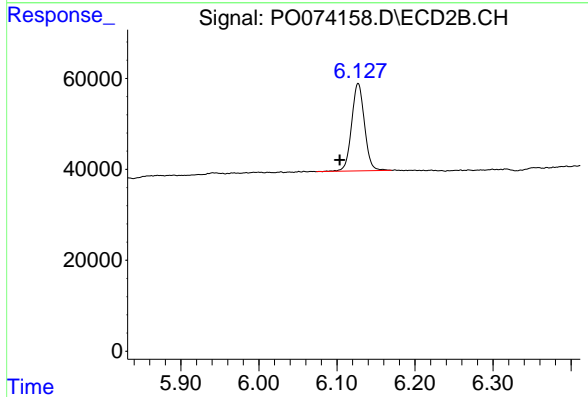
#25 AR-1248-5
 R.T.: 6.127 min
 Delta R.T.: -0.019 min
 Response: 219448
 Conc: 95.47 ng/ml



#26 AR-1254-1

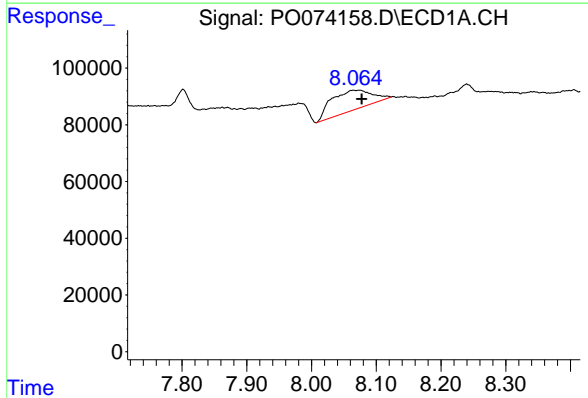
R.T.: 7.176 min
 Delta R.T.: 0.008 min
 Response: 569080
 Conc: 147.41 ng/ml

Instrument :
 ECD_O
 ClientSampleId :



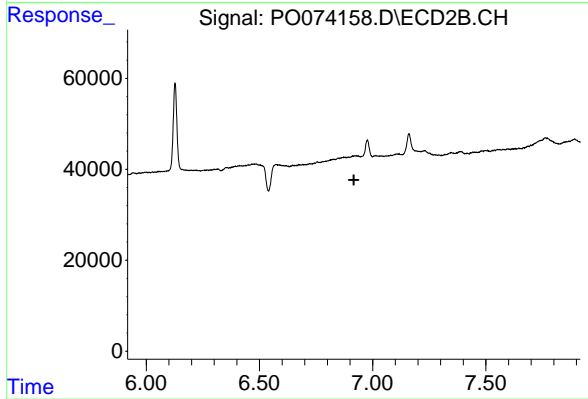
#26 AR-1254-1

R.T.: 6.127 min
 Delta R.T.: 0.024 min
 Response: 219448
 Conc: 63.45 ng/ml



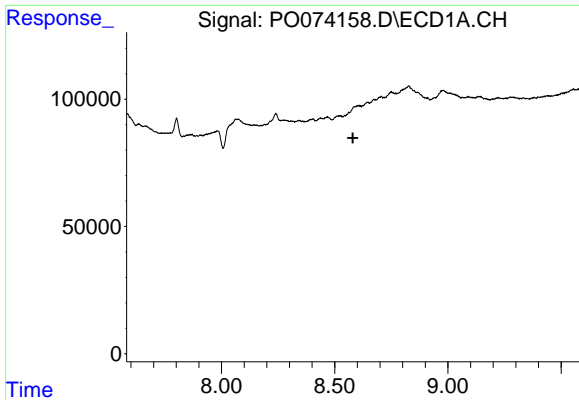
#29 AR-1254-4

R.T.: 8.074 min
 Delta R.T.: -0.004 min
 Response: 307539
 Conc: 58.64 ng/ml



#29 AR-1254-4

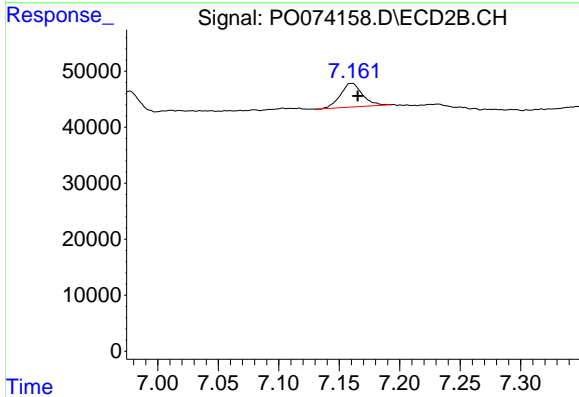
R.T.: 0.000 min
 Exp R.T. : 6.917 min
 Response: 0
 Conc: N.D.



#33 AR-1260-3

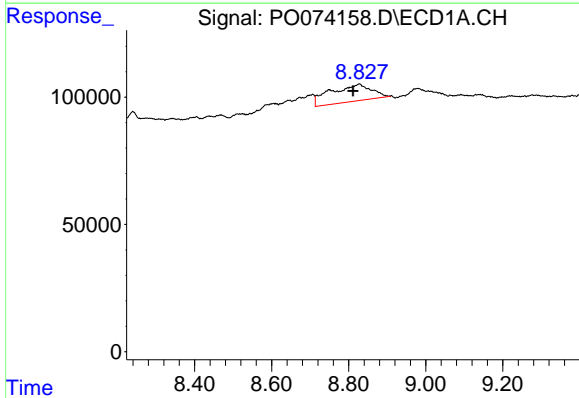
R.T.: 0.000 min
 Exp R.T.: 8.580 min
 Response: 0
 Conc: N.D.

Instrument :
 ECD_O
 ClientSampleId :



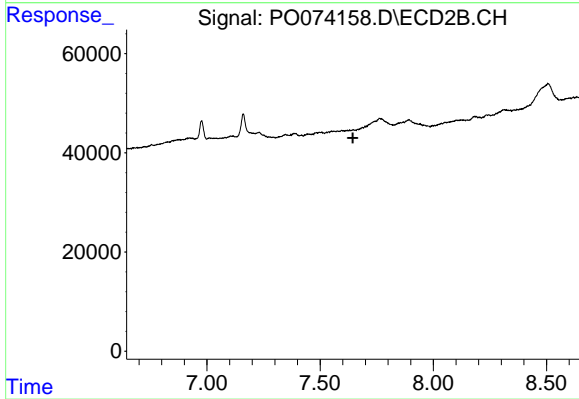
#33 AR-1260-3

R.T.: 7.161 min
 Delta R.T.: -0.005 min
 Response: 53641
 Conc: 13.69 ng/ml



#34 AR-1260-4

R.T.: 8.827 min
 Delta R.T.: 0.016 min
 Response: 495436
 Conc: 97.51 ng/ml



#34 AR-1260-4

R.T.: 0.000 min
 Exp R.T.: 7.645 min
 Response: 0
 Conc: N.D.