

Data Path : Z:\pestpcbsrv\HPCHEM1\ECD_0\Data\PO122320\
 Data File : PO074125.D
 Signal(s) : Signal #1: ECD1A.CH Signal #2: ECD2B.CH
 Acq On : 23 Dec 2020 22:16
 Operator : DD\AJ
 Sample : L5171-08
 Misc :
 ALS Vial : 19 Sample Multiplier: 1

Instrument :
 ECD_0
ClientSampled :
 S10-02-B

Manual Integrations
APPROVED

Ankita
 12/24/2020 11:34:43 AM

Integration File signal 1: autoint1.e
 Integration File signal 2: autoint2.e
 Quant Time: Dec 24 01:38:22 2020
 Quant Method : Z:\pestpcbsrv\HPCHEM1\ECD_0\methods\PO122320.M
 Quant Title : GC EXTRACTABLES
 QLast Update : Thu Dec 24 01:16:32 2020
 Response via : Initial Calibration
 Integrator: ChemStation 6890 Scale Mode: Small noise peaks clipped

Volume Inj. : 2 µl
 Signal #1 Phase : ZB-MR2 Signal #2 Phase: ZB-MR2
 Signal #1 Info : 30Mx0.32mmx 0.50µ Signal #2 Info : 30M x 0.32mm x 0.25µm

Compound	RT#1	RT#2	Resp#1	Resp#2	ng/ml	ng/ml

System Monitoring Compounds						
1) SA Tetrachlo...	4.933	3.991	1923355	1169560	18.863m	20.386
2) SA Decachlor...	10.952	9.250	2291171	1189138	23.527	22.119
Target Compounds						
26) L6 AR-1254-1	7.170	6.105	257274	250599	66.644	72.454
27) L6 AR-1254-2	7.401	6.263	576379	217044	95.909	71.513 #
28) L6 AR-1254-3	7.783	6.680	628129	539843	104.557	111.558
29) L6 AR-1254-4	8.079	6.918	414255	275906	78.987	77.556
30) L6 AR-1254-5	8.508	7.344	872181	643233	170.813	140.175
41) L9 AR-1268-1	9.450	8.177	6857074	4044195	438.710	380.569
42) L9 AR-1268-2	9.545	8.241	4156091	2467574	311.036	281.077
43) L9 AR-1268-3	9.771	8.448	5383716	3004261	456.819	399.405
44) L9 AR-1268-4	10.209	8.734	1055419	616014	211.843	200.148
45) L9 AR-1268-5	10.619	9.011	14140642	7682491	391.940	355.973

(f)=RT Delta > 1/2 Window (#)=Amounts differ by > 25% (m)=manual int.

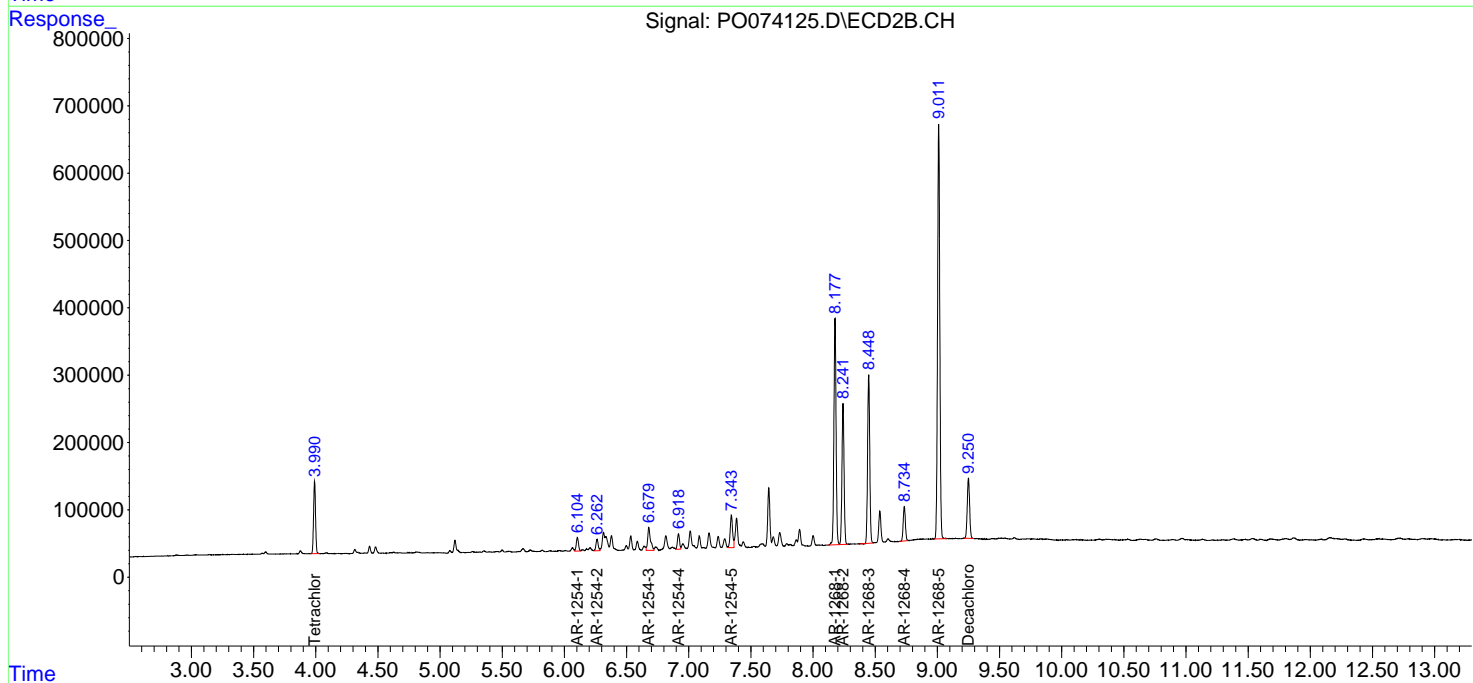
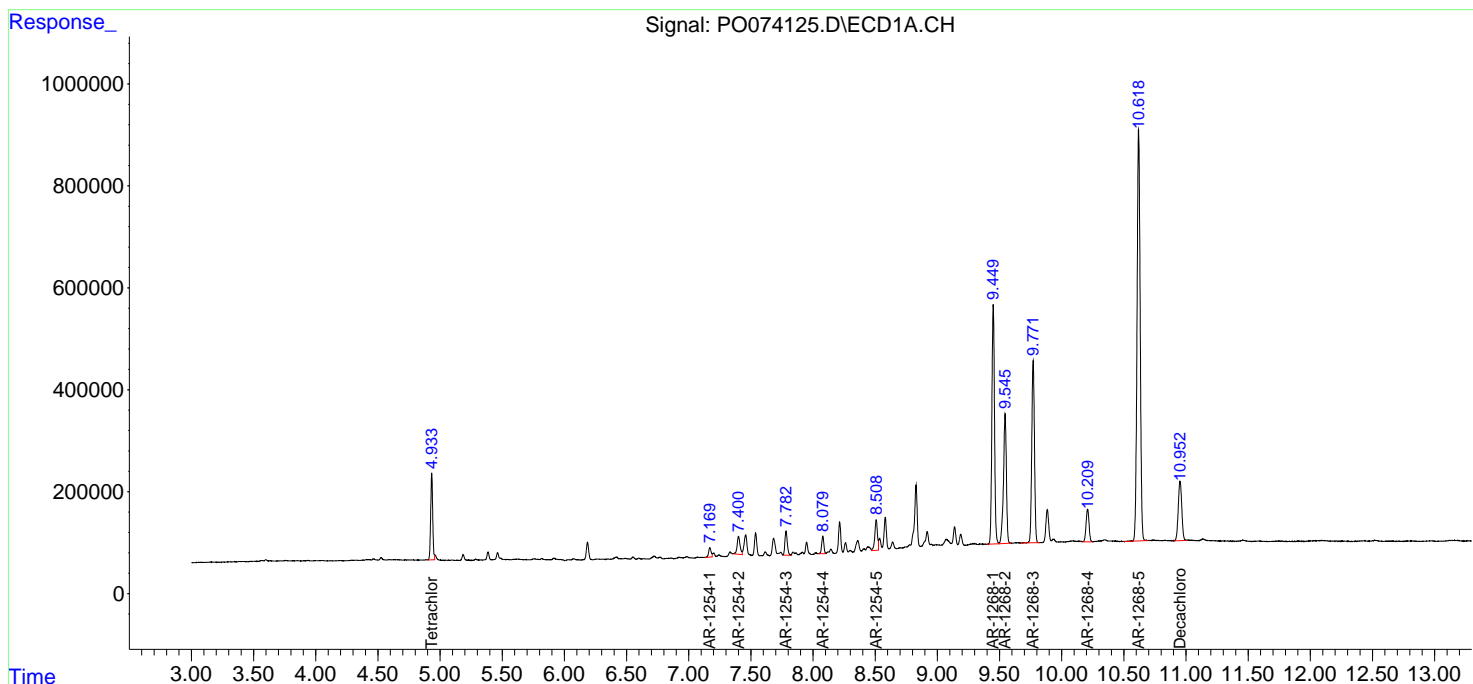
Data Path : Z:\pestpcbsrv\HPCHEM1\ECD_0\Data\PO122320\
 Data File : P0074125.D
 Signal(s) : Signal #1: ECD1A.CH Signal #2: ECD2B.CH
 Acq On : 23 Dec 2020 22:16
 Operator : DD\AJ
 Sample : L5171-08
 Misc :
 ALS Vial : 19 Sample Multiplier: 1

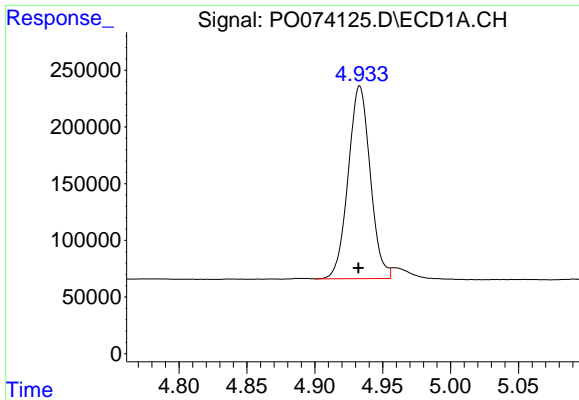
Instrument :
 ECD_O
Client Sampled :
 S10-02-B

Manual Integrations
APPROVED
 Ankita
 12/24/2020 11:34:43 AM

Integration File signal 1: autoint1.e
 Integration File signal 2: autoint2.e
 Quant Time: Dec 24 01:38:22 2020
 Quant Method : Z:\pestpcbsrv\HPCHEM1\ECD_0\methods\PO122320.M
 Quant Title : GC EXTRACTABLES
 QLast Update : Thu Dec 24 01:16:32 2020
 Response via : Initial Calibration
 Integrator: ChemStation 6890 Scale Mode: Small noise peaks clipped

Volume Inj. : 2 µl
 Signal #1 Phase : ZB-MR1 Signal #2 Phase: ZB-MR2
 Signal #1 Info : 30Mx0.32mmx 0.50µ Signal #2 Info : 30M x 0.32mm x 0.25µm

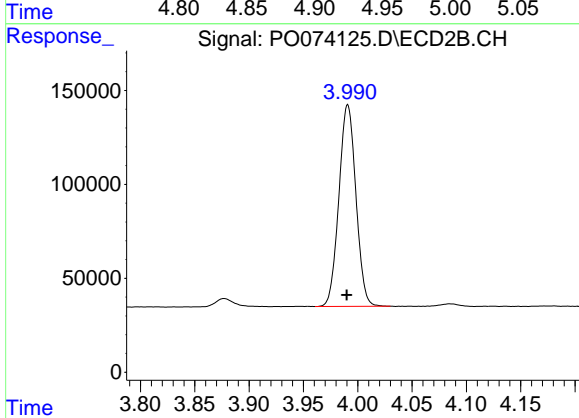




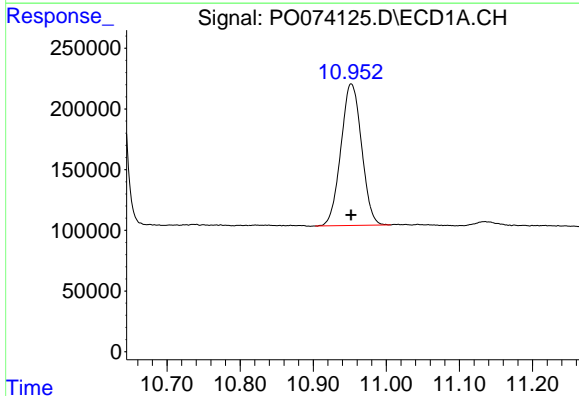
#1 Tetrachloro-m-xylene
 R.T.: 4.933 min
 Delta R.T.: 0.000 min
 Response: 1923355
 Conc: 18.86 ng/ml m

Instrument :
 ECD_O
ClientSampled :
 S10-02-B

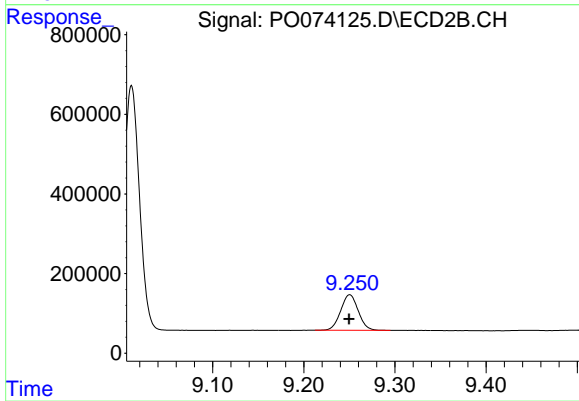
Manual Integrations
APPROVED
 Ankita
 12/24/2020 11:34:43 AM



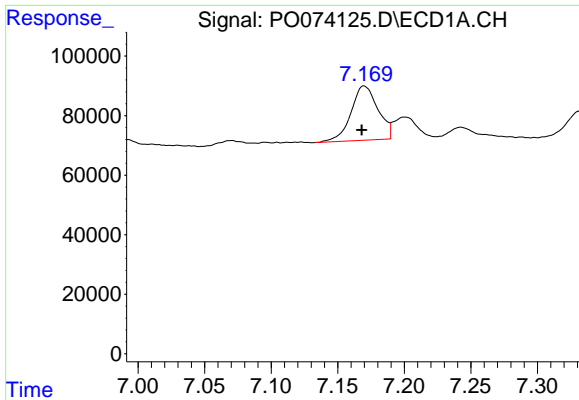
#1 Tetrachloro-m-xylene
 R.T.: 3.991 min
 Delta R.T.: 0.000 min
 Response: 1169560
 Conc: 20.39 ng/ml



#2 Decachlorobiphenyl
 R.T.: 10.952 min
 Delta R.T.: 0.000 min
 Response: 2291171
 Conc: 23.53 ng/ml



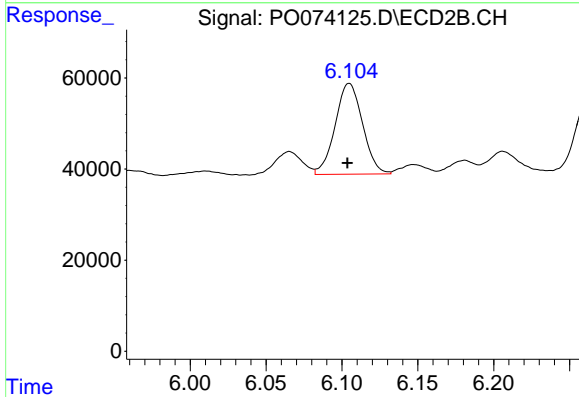
#2 Decachlorobiphenyl
 R.T.: 9.250 min
 Delta R.T.: 0.000 min
 Response: 1189138
 Conc: 22.12 ng/ml



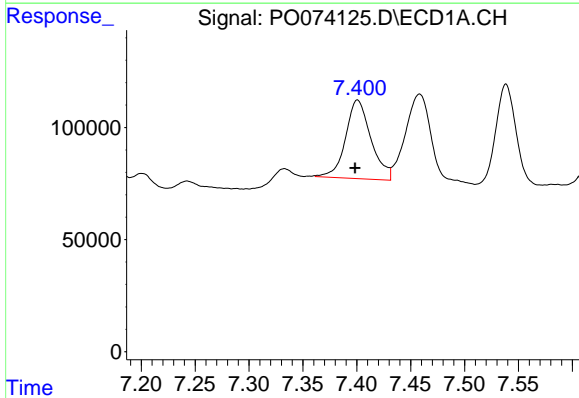
#26 AR-1254-1
 R.T.: 7.170 min
 Delta R.T.: 0.002 min
 Response: 257274
 Conc: 66.64 ng/ml

Instrument :
 ECD_O
ClientSampled :
 S10-02-B

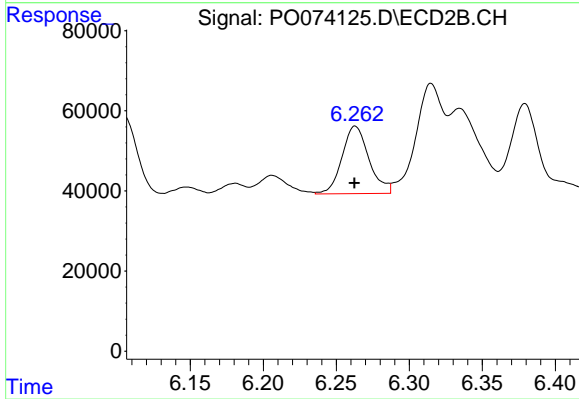
Manual Integrations
APPROVED
 Ankita
 12/24/2020 11:34:43 AM



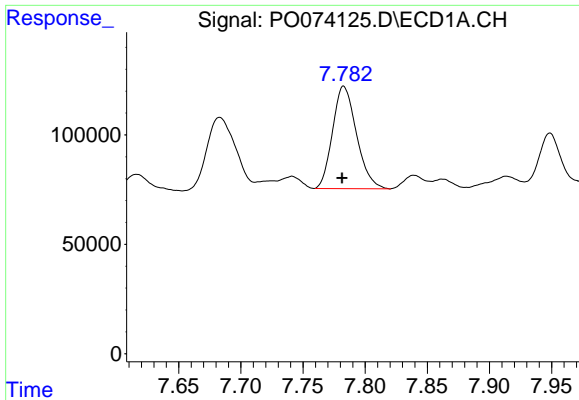
#26 AR-1254-1
 R.T.: 6.105 min
 Delta R.T.: 0.001 min
 Response: 250599
 Conc: 72.45 ng/ml



#27 AR-1254-2
 R.T.: 7.401 min
 Delta R.T.: 0.002 min
 Response: 576379
 Conc: 95.91 ng/ml



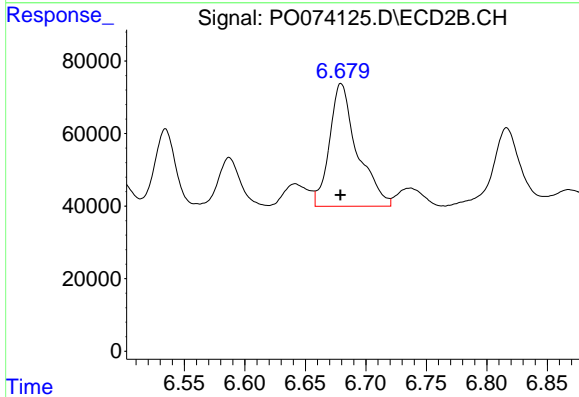
#27 AR-1254-2
 R.T.: 6.263 min
 Delta R.T.: 0.000 min
 Response: 217044
 Conc: 71.51 ng/ml



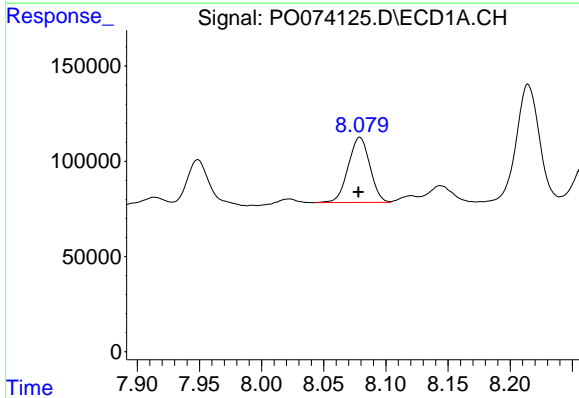
#28 AR-1254-3
 R.T.: 7.783 min
 Delta R.T.: 0.001 min
 Response: 628129
 Conc: 104.56 ng/ml

Instrument :
 ECD_O
ClientSampled :
 S10-02-B

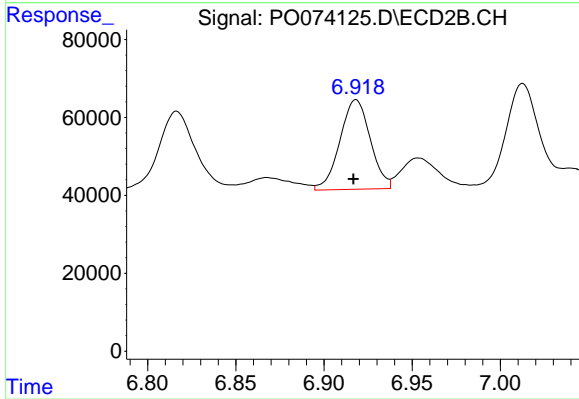
Manual Integrations
APPROVED
 Ankita
 12/24/2020 11:34:43 AM



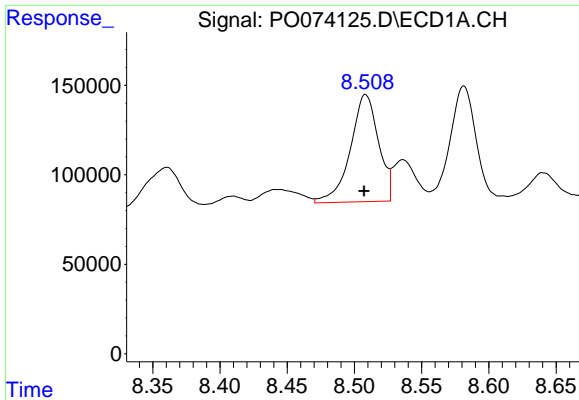
#28 AR-1254-3
 R.T.: 6.680 min
 Delta R.T.: 0.000 min
 Response: 539843
 Conc: 111.56 ng/ml



#29 AR-1254-4
 R.T.: 8.079 min
 Delta R.T.: 0.001 min
 Response: 414255
 Conc: 78.99 ng/ml



#29 AR-1254-4
 R.T.: 6.918 min
 Delta R.T.: 0.001 min
 Response: 275906
 Conc: 77.56 ng/ml

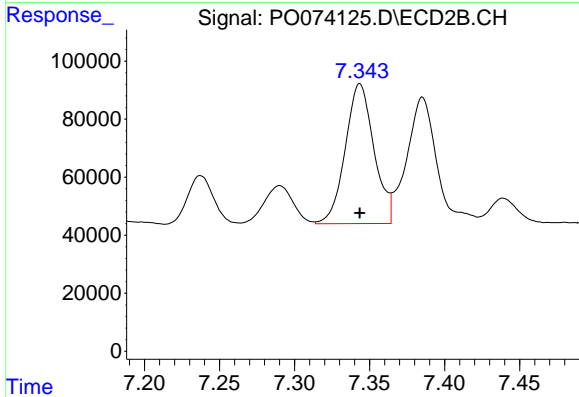


#30 AR-1254-5

R.T.: 8.508 min
 Delta R.T.: 0.001 min
 Response: 872181
 Conc: 170.81 ng/ml

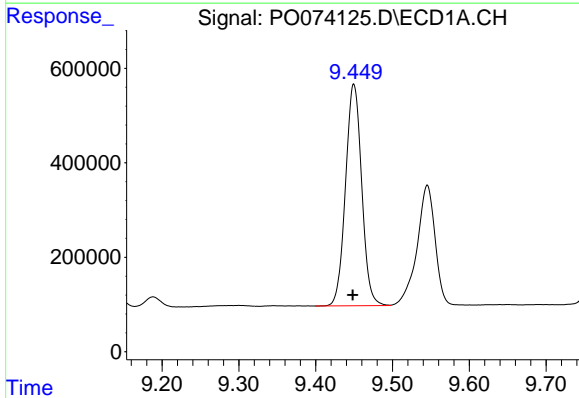
Instrument :
 ECD_O
 ClientSampled :
 S10-02-B

Manual Integrations
 APPROVED
 Ankita
 12/24/2020 11:34:43 AM



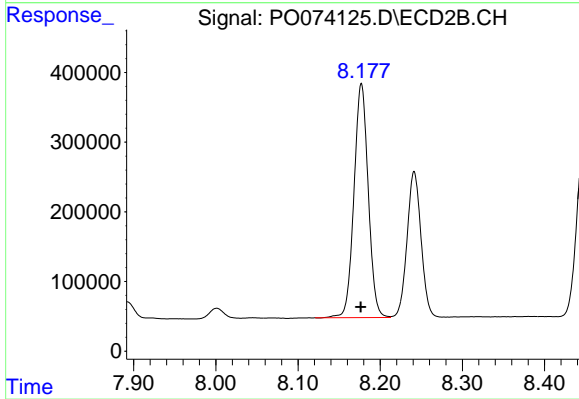
#30 AR-1254-5

R.T.: 7.344 min
 Delta R.T.: 0.000 min
 Response: 643233
 Conc: 140.17 ng/ml



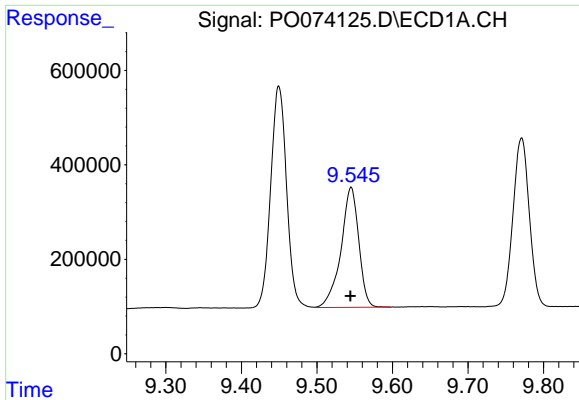
#41 AR-1268-1

R.T.: 9.450 min
 Delta R.T.: 0.001 min
 Response: 6857074
 Conc: 438.71 ng/ml



#41 AR-1268-1

R.T.: 8.177 min
 Delta R.T.: 0.000 min
 Response: 4044195
 Conc: 380.57 ng/ml

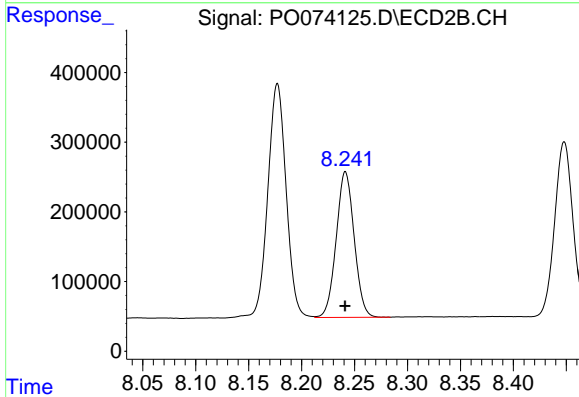


#42 AR-1268-2

R.T.: 9.545 min
 Delta R.T.: 0.001 min
 Response: 4156091
 Conc: 311.04 ng/ml

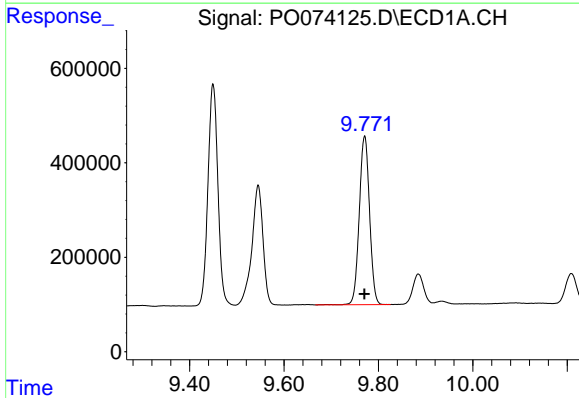
Instrument :
 ECD_O
ClientSampled :
 S10-02-B

Manual Integrations
APPROVED
 Ankita
 12/24/2020 11:34:43 AM



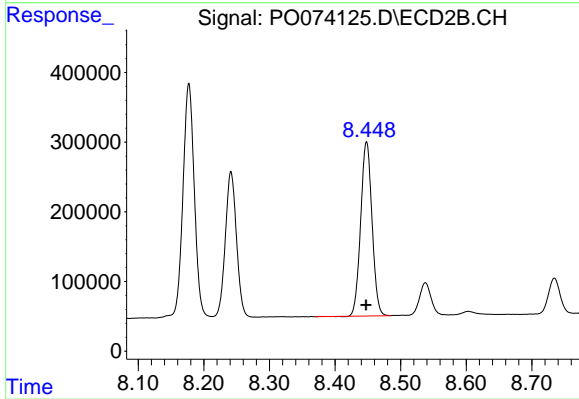
#42 AR-1268-2

R.T.: 8.241 min
 Delta R.T.: 0.000 min
 Response: 2467574
 Conc: 281.08 ng/ml



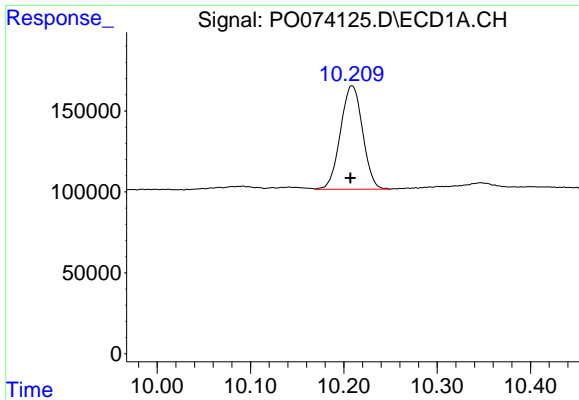
#43 AR-1268-3

R.T.: 9.771 min
 Delta R.T.: 0.000 min
 Response: 5383716
 Conc: 456.82 ng/ml



#43 AR-1268-3

R.T.: 8.448 min
 Delta R.T.: 0.000 min
 Response: 3004261
 Conc: 399.40 ng/ml

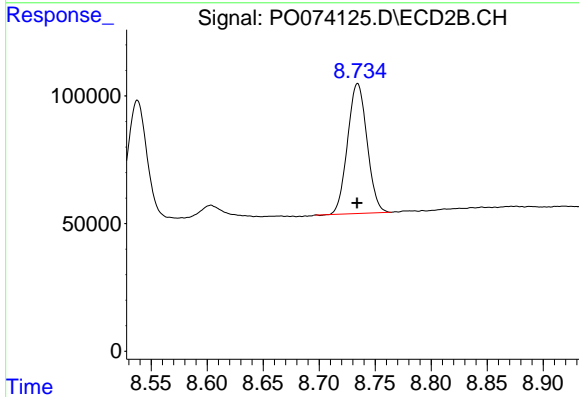


#44 AR-1268-4

R.T.: 10.209 min
 Delta R.T.: 0.002 min
 Response: 1055419
 Conc: 211.84 ng/ml

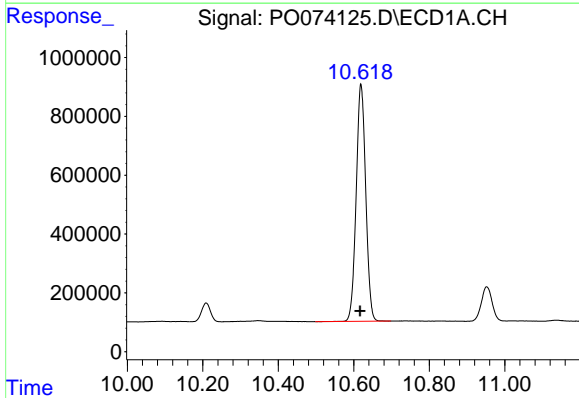
Instrument :
 ECD_O
ClientSampled :
 S10-02-B

Manual Integrations
APPROVED
 Ankita
 12/24/2020 11:34:43 AM



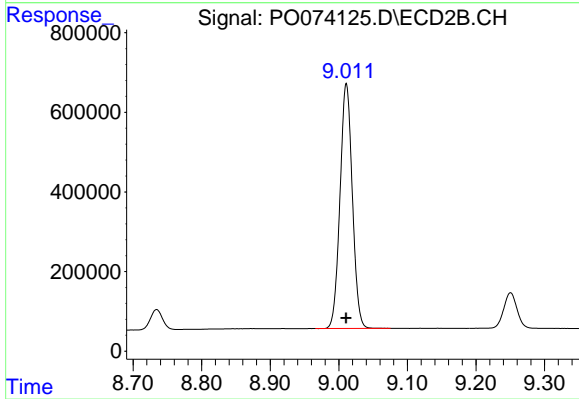
#44 AR-1268-4

R.T.: 8.734 min
 Delta R.T.: 0.000 min
 Response: 616014
 Conc: 200.15 ng/ml



#45 AR-1268-5

R.T.: 10.619 min
 Delta R.T.: 0.002 min
 Response: 14140642
 Conc: 391.94 ng/ml



#45 AR-1268-5

R.T.: 9.011 min
 Delta R.T.: 0.000 min
 Response: 7682491
 Conc: 355.97 ng/ml