

Data Path : Z:\pestpcbsrv\HPCHEM1\ECD_0\Data\P0122723\
 Data File : P0100794.D
 Signal(s) : Signal #1: ECD1A.ch Signal #2: ECD2B.ch
 Acq On : 27 Dec 2023 16:45
 Operator : YP/AJ
 Sample : 06027-03
 Misc :
 ALS Vial : 21 Sample Multiplier: 1

Instrument :
 ECD_0
 ClientSampleId :
 PIERS

Integration File signal 1: autoint1.e
 Integration File signal 2: autoint2.e
 Quant Time: Dec 28 00:22:00 2023
 Quant Method : Z:\pestpcbsrv\HPCHEM1\ECD_0\methods\P0122023.M
 Quant Title : GC EXTRACTABLES
 QLast Update : Thu Dec 21 04:28:19 2023
 Response via : Initial Calibration
 Integrator: ChemStation

Volume Inj. : 2 µl
 Signal #1 Phase : ZB-MR1 Signal #2 Phase: ZB-MR2
 Signal #1 Info : 30Mx0.32mmx 0.50µ Signal #2 Info : 30M x 0.32mm x 0.25µm

Compound	RT#1	RT#2	Resp#1	Resp#2	ng/ml	ng/ml

System Monitoring Compounds						
1) SA Tetrachlo...	4.347	3.644	68843898	44122721	22.063	21.593
2) SA Decachlor...	10.091	8.705	43391067	34053363	20.770	22.562
Target Compounds						
3) L1 AR-1016-1	5.518	4.732	45245	71348	0.527	1.153 #
4) L1 AR-1016-2	5.542	4.757	52054	125641	0.408	1.425 #
5) L1 AR-1016-3	5.595	4.929	127092	128939	1.611	2.760 #
6) L1 AR-1016-4	5.691	4.986	27858	219107	0.457	5.339 #
7) L1 AR-1016-5	6.000	5.181	18982	403829	0.310	7.774 #
8) L2 AR-1221-1	4.555	3.862	621640	19677	16.816	0.784 #
9) L2 AR-1221-2	4.654	3.947	996084	942114	35.867	49.062 #
10) L2 AR-1221-3	4.714	4.021	32577	305528	0.390	5.192 #
11) L3 AR-1232-1	4.714	4.021	32577	305528	0.489	6.462 #
12) L3 AR-1232-2	5.265	4.757	83113	125641	2.371	3.012 #
13) L3 AR-1232-3	5.542	4.929	52054	128939	0.872	6.010 #
14) L3 AR-1232-4	5.691	4.986f	27858	219107	1.016	10.312 #
15) L3 AR-1232-5	5.799	5.181	87585	403829	3.643	18.479 #
16) L4 AR-1242-1	5.518	4.732	45245	71348	0.641	1.366 #
17) L4 AR-1242-2	5.542	4.757	52054	125641	0.496	1.734 #
18) L4 AR-1242-3	5.595	4.929	127092	128939	1.955	3.365 #
19) L4 AR-1242-4	5.691	4.986f	27858	219107	0.556	5.257 #
20) L4 AR-1242-5	6.436	5.536	181671	272972	3.510	5.948 #
21) L5 AR-1248-1	5.518	4.732	45245	71348	0.825	1.784 #
22) L5 AR-1248-2	5.799	4.986	87585	219107	1.014	3.642 #
23) L5 AR-1248-3	6.000	4.986f	18982	219107	0.216	3.505 #
24) L5 AR-1248-4	6.408	5.181	411457	403829	4.576	5.606
25) L5 AR-1248-5	6.436	5.643f	181671	591804	2.024	9.593 #
26) L6 AR-1254-1	6.344	5.536	182618	272972	1.737	2.660 #
27) L6 AR-1254-2	6.624	5.722	712379	493443	4.824	5.371
28) L6 AR-1254-3	6.963	6.117	100345	389866	0.717	2.883 #
29) L6 AR-1254-4	7.273	6.274f	43225	883918	0.508	12.254 #
30) L6 AR-1254-5	7.641	6.779	5357348	7252857	45.276	62.946 #
31) L7 AR-1260-1	7.154	6.274	1945331	883918	14.200	9.280 #
32) L7 AR-1260-2	7.390	6.418	72880	119672	0.579	1.113 #
33) L7 AR-1260-3	7.752	6.595	161793	299308	1.670	2.920 #
34) L7 AR-1260-4	7.959	0.000	624594	0	5.919	N.D. #
35) L7 AR-1260-5	8.320	7.325	11618448	1673261	55.040	9.271 #
36) L8 AR-1262-1	7.641	6.779	5357348	7252857	53.627	116.272 #
37) L8 AR-1262-2	8.320	0.000	11618448	0	48.959	N.D. #
38) L8 AR-1262-3	8.600	7.591	884826	432195	5.448	5.612
39) L8 AR-1262-4	8.693	7.655	982498	324444	7.620	2.196 #
40) L8 AR-1262-5	9.326	0.000	133414	0	1.672	N.D. #
41) L9 AR-1268-1	8.600	7.591	884826	432195	3.131	1.950 #

Data Path : Z:\pestpcbsrv\HPCHEM1\ECD_O\Data\P0122723\
 Data File : P0100794.D
 Signal(s) : Signal #1: ECD1A.ch Signal #2: ECD2B.ch
 Acq On : 27 Dec 2023 16:45
 Operator : YP/AJ
 Sample : 06027-03
 Misc :
 ALS Vial : 21 Sample Multiplier: 1

Instrument :
 ECD_O
 ClientSampleId :
 PIERS

Integration File signal 1: autoint1.e
 Integration File signal 2: autoint2.e
 Quant Time: Dec 28 00:22:00 2023
 Quant Method : Z:\pestpcbsrv\HPCHEM1\ECD_O\methods\P0122023.M
 Quant Title : GC EXTRACTABLES
 QLast Update : Thu Dec 21 04:28:19 2023
 Response via : Initial Calibration
 Integrator: ChemStation

Volume Inj. : 2 µl
 Signal #1 Phase : ZB-MR1 Signal #2 Phase: ZB-MR2
 Signal #1 Info : 30Mx0.32mmx 0.50µ Signal #2 Info : 30M x 0.32mm x 0.25µm

	Compound	RT#1	RT#2	Resp#1	Resp#2	ng/ml	ng/ml
42)	L9 AR-1268-2	8.693	7.655	982498	324444	3.888	1.604 #
43)	L9 AR-1268-3	8.954f	7.825	740093	1246960	3.244	6.609 #
44)	L9 AR-1268-4	9.326	0.000	133414	0	1.704	N.D. #
45)	L9 AR-1268-5	9.710f	8.440	41991	493902	0.059	0.952 #

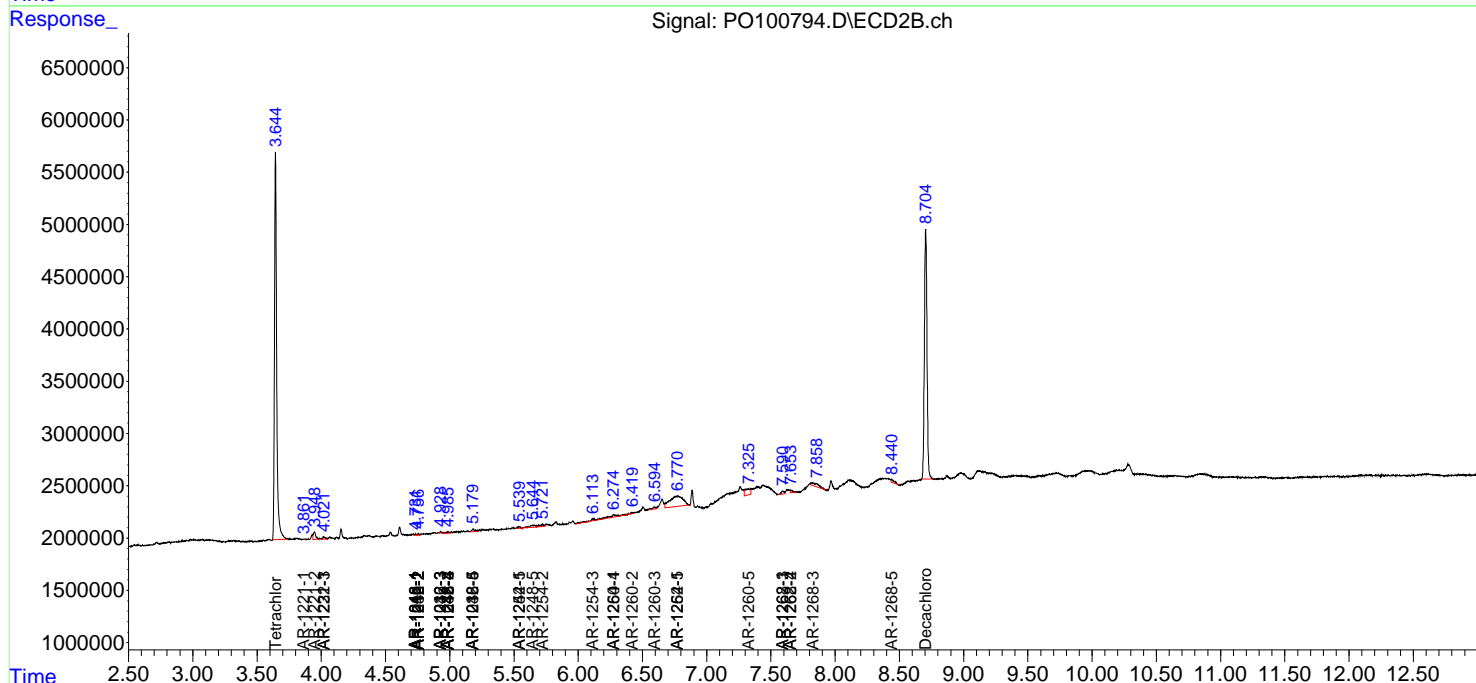
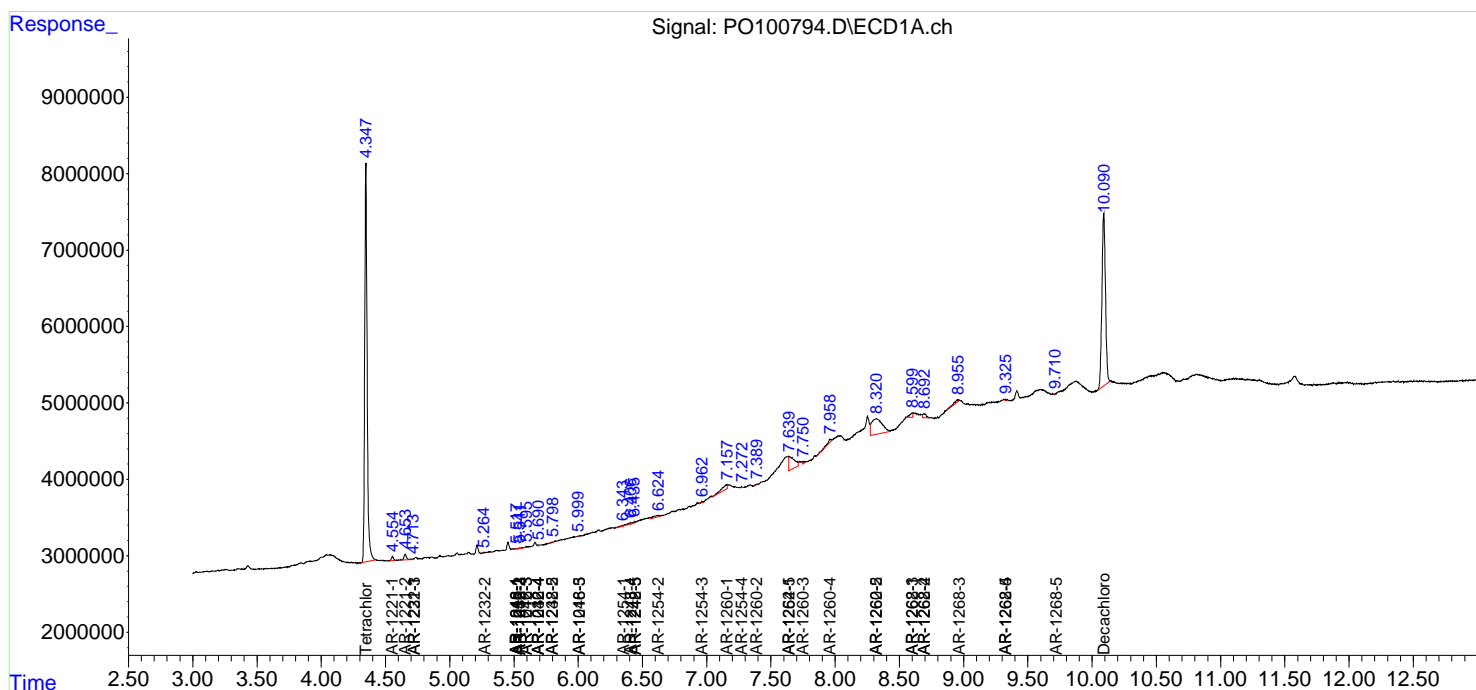
(f)=RT Delta > 1/2 Window (#)=Amounts differ by > 25% (m)=manual int.

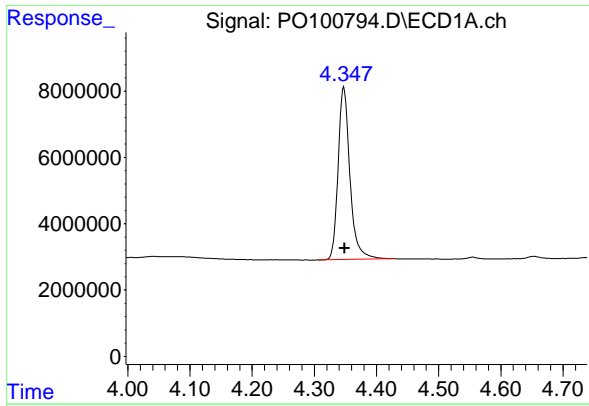
Data Path : Z:\pestpcbsrv\HPCHEM1\ECD_O\Data\PO122723\
 Data File : PO100794.D
 Signal(s) : Signal #1: ECD1A.ch Signal #2: ECD2B.ch
 Acq On : 27 Dec 2023 16:45
 Operator : YP/AJ
 Sample : 06027-03
 Misc :
 ALS Vial : 21 Sample Multiplier: 1

Instrument :
 ECD_O
 ClientSampleId :
 PIERS

Integration File signal 1: autoint1.e
 Integration File signal 2: autoint2.e
 Quant Time: Dec 28 00:22:00 2023
 Quant Method : Z:\pestpcbsrv\HPCHEM1\ECD_O\methods\PO122023.M
 Quant Title : GC EXTRACTABLES
 QLast Update : Thu Dec 21 04:28:19 2023
 Response via : Initial Calibration
 Integrator: ChemStation

Volume Inj. : 2 µl
 Signal #1 Phase : ZB-MR1 Signal #2 Phase: ZB-MR2
 Signal #1 Info : 30Mx0.32mmx 0.50µ Signal #2 Info : 30M x 0.32mm x 0.25µm

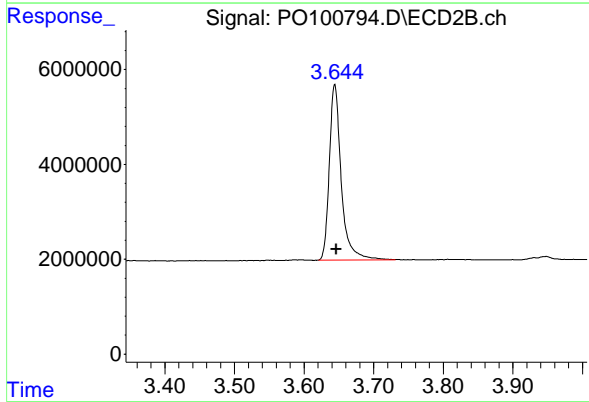




#1 Tetrachloro-m-xylene

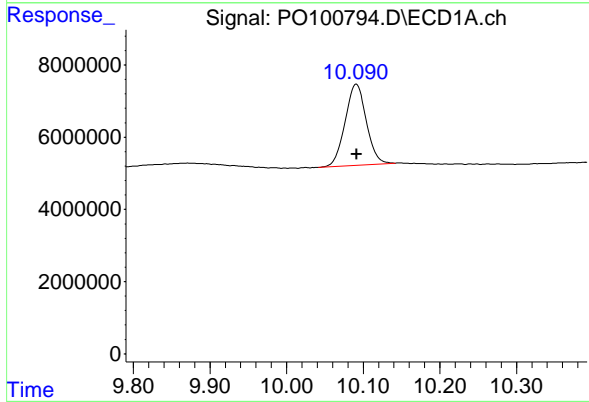
R.T.: 4.347 min
 Delta R.T.: -0.002 min
 Response: 68843898
 Conc: 22.06 ng/ml

Instrument :
 ECD_O
 ClientSampleId :
 PIERS



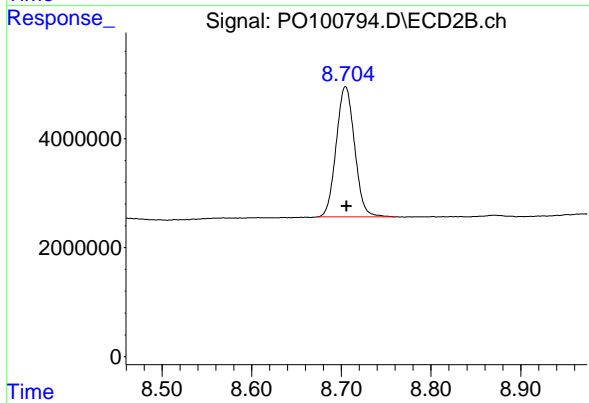
#1 Tetrachloro-m-xylene

R.T.: 3.644 min
 Delta R.T.: -0.002 min
 Response: 44122721
 Conc: 21.59 ng/ml



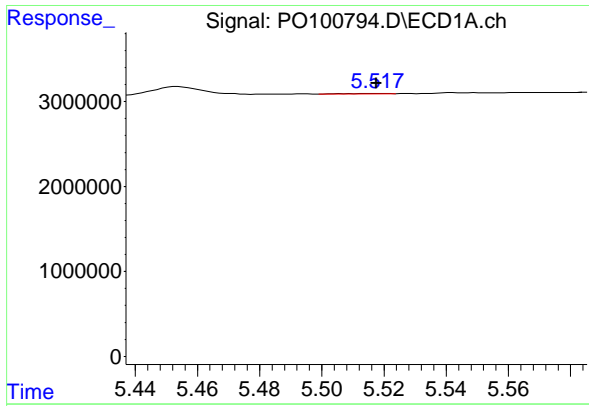
#2 Decachlorobiphenyl

R.T.: 10.091 min
 Delta R.T.: 0.000 min
 Response: 43391067
 Conc: 20.77 ng/ml



#2 Decachlorobiphenyl

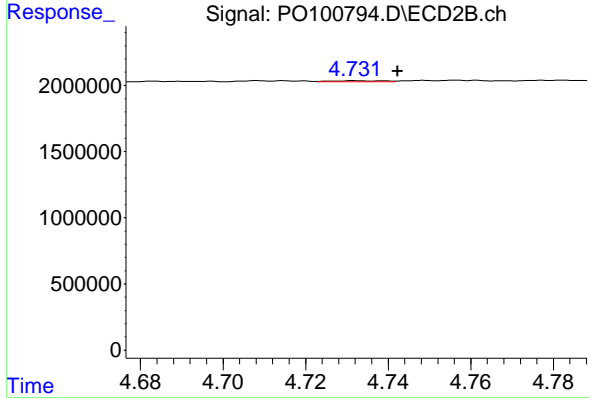
R.T.: 8.705 min
 Delta R.T.: -0.001 min
 Response: 34053363
 Conc: 22.56 ng/ml



#3 AR-1016-1

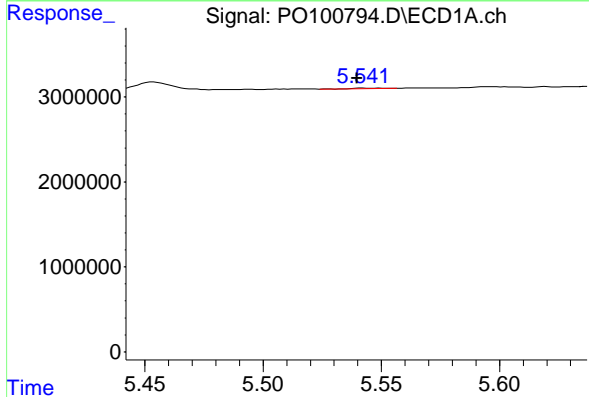
R.T.: 5.518 min
 Delta R.T.: 0.000 min
 Response: 45245
 Conc: 0.53 ng/ml

Instrument :
 ECD_O
 ClientSampleId :
 PIERS



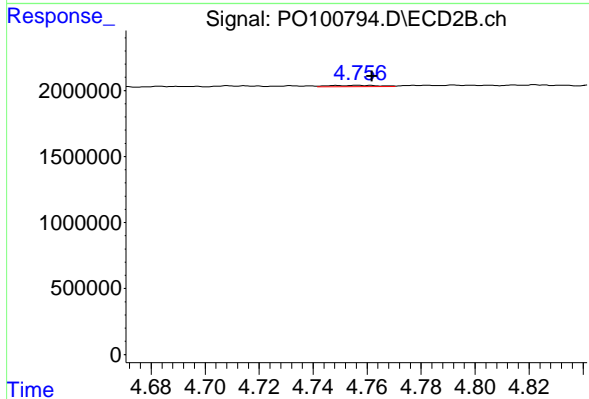
#3 AR-1016-1

R.T.: 4.732 min
 Delta R.T.: -0.010 min
 Response: 71348
 Conc: 1.15 ng/ml



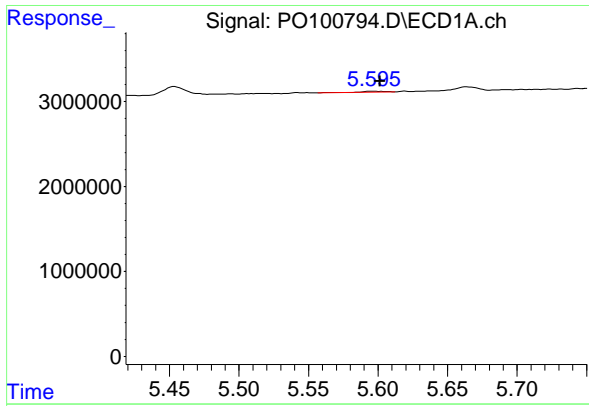
#4 AR-1016-2

R.T.: 5.542 min
 Delta R.T.: 0.002 min
 Response: 52054
 Conc: 0.41 ng/ml



#4 AR-1016-2

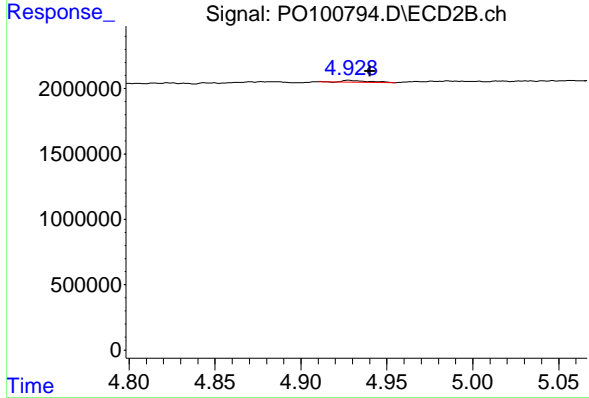
R.T.: 4.757 min
 Delta R.T.: -0.005 min
 Response: 125641
 Conc: 1.42 ng/ml



#5 AR-1016-3

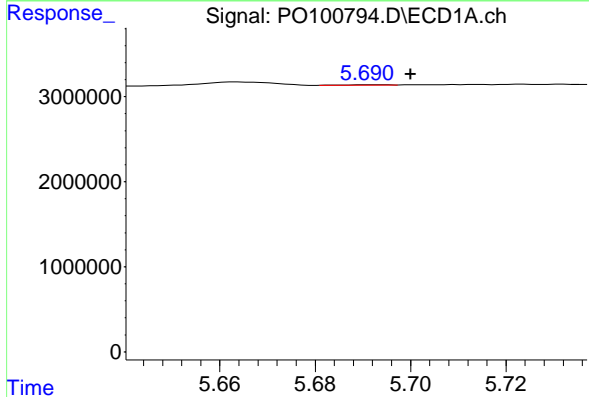
R.T.: 5.595 min
 Delta R.T.: -0.006 min
 Response: 127092
 Conc: 1.61 ng/ml

Instrument :
 ECD_O
 ClientSampleId :
 PIERS



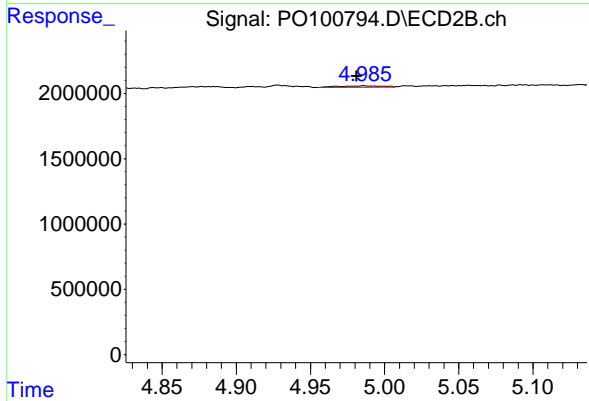
#5 AR-1016-3

R.T.: 4.929 min
 Delta R.T.: -0.011 min
 Response: 128939
 Conc: 2.76 ng/ml



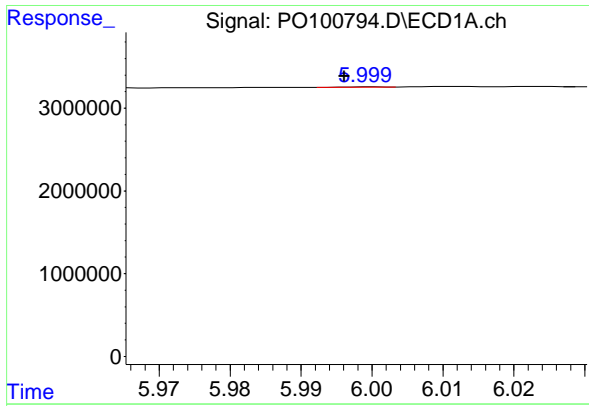
#6 AR-1016-4

R.T.: 5.691 min
 Delta R.T.: -0.009 min
 Response: 27858
 Conc: 0.46 ng/ml



#6 AR-1016-4

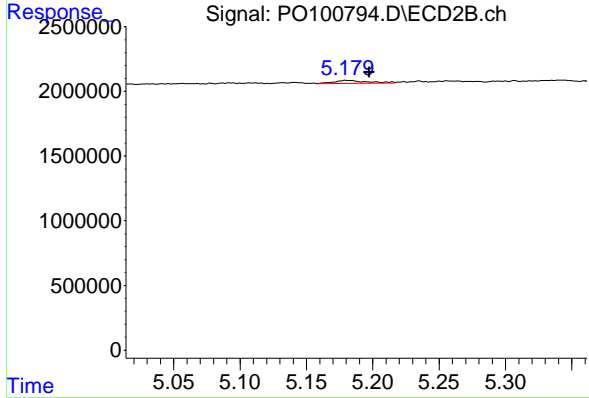
R.T.: 4.986 min
 Delta R.T.: 0.005 min
 Response: 219107
 Conc: 5.34 ng/ml



#7 AR-1016-5

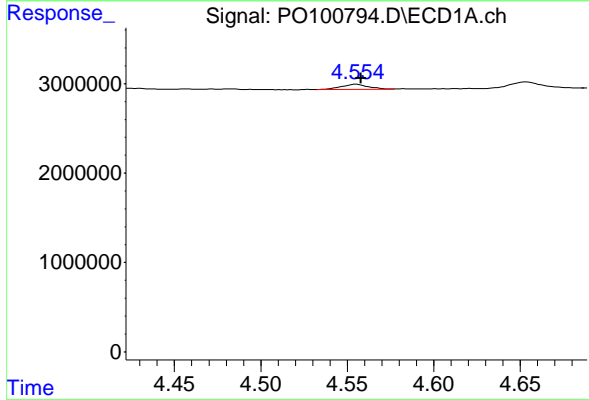
R.T.: 6.000 min
 Delta R.T.: 0.003 min
 Response: 18982
 Conc: 0.31 ng/ml

Instrument :
 ECD_O
 ClientSampleId :
 PIERS



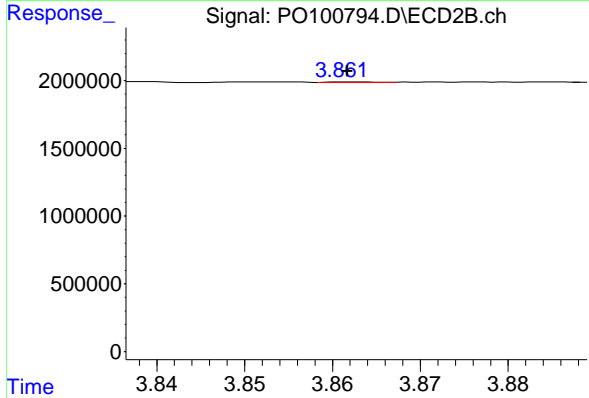
#7 AR-1016-5

R.T.: 5.181 min
 Delta R.T.: -0.016 min
 Response: 403829
 Conc: 7.77 ng/ml



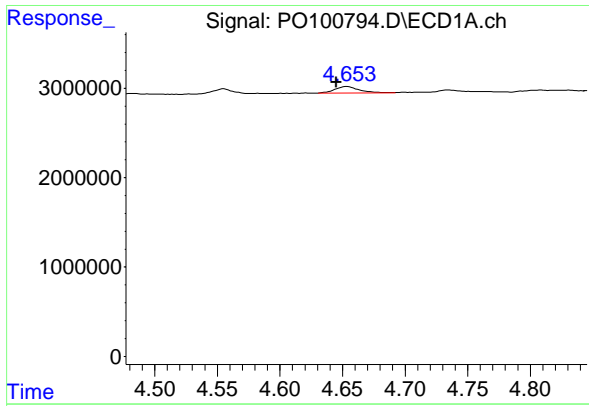
#8 AR-1221-1

R.T.: 4.555 min
 Delta R.T.: -0.003 min
 Response: 621640
 Conc: 16.82 ng/ml



#8 AR-1221-1

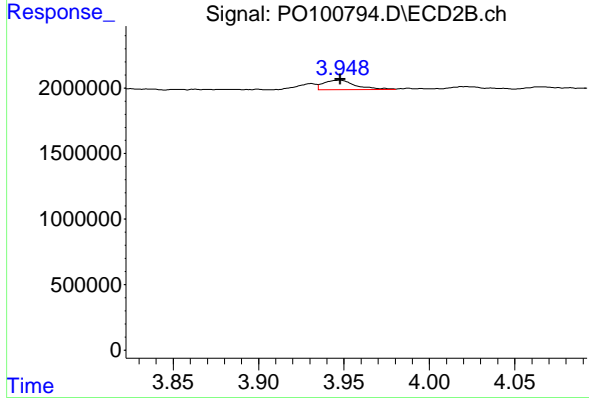
R.T.: 3.862 min
 Delta R.T.: 0.000 min
 Response: 19677
 Conc: 0.78 ng/ml



#9 AR-1221-2

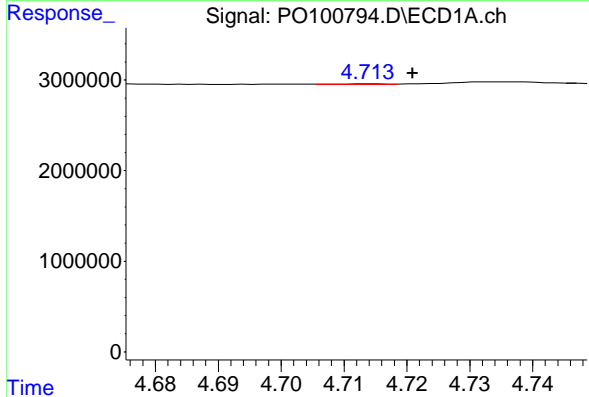
R.T.: 4.654 min
 Delta R.T.: 0.009 min
 Response: 996084
 Conc: 35.87 ng/ml

Instrument :
 ECD_O
 ClientSampleId :
 PIERS



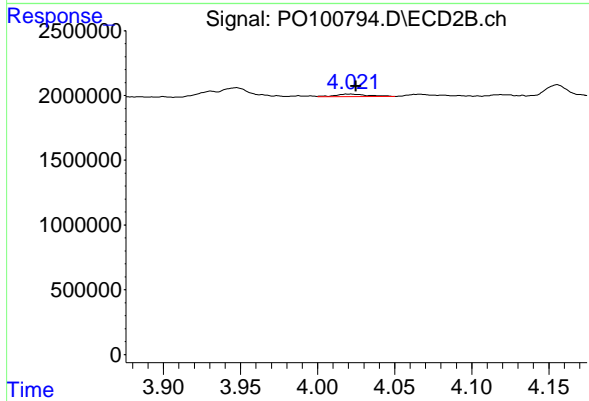
#9 AR-1221-2

R.T.: 3.947 min
 Delta R.T.: 0.000 min
 Response: 942114
 Conc: 49.06 ng/ml



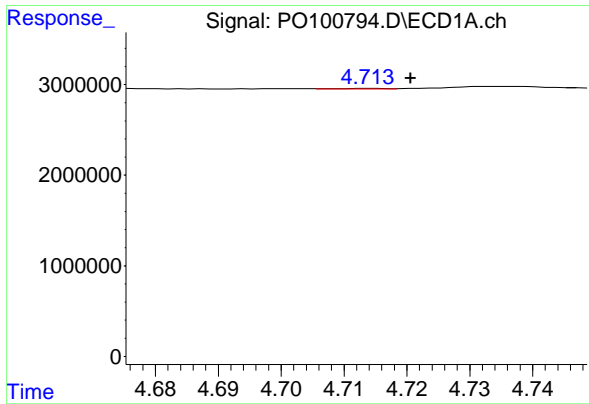
#10 AR-1221-3

R.T.: 4.714 min
 Delta R.T.: -0.007 min
 Response: 32577
 Conc: 0.39 ng/ml



#10 AR-1221-3

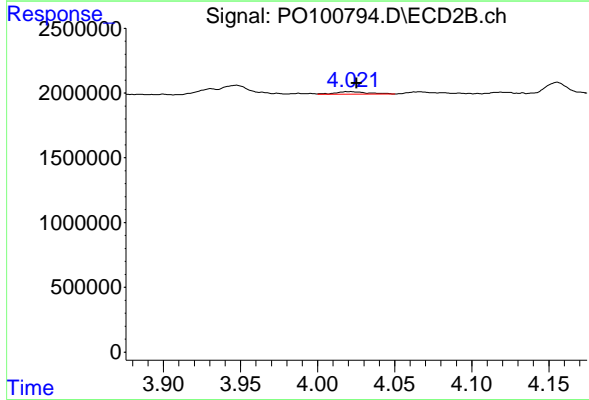
R.T.: 4.021 min
 Delta R.T.: -0.004 min
 Response: 305528
 Conc: 5.19 ng/ml



#11 AR-1232-1

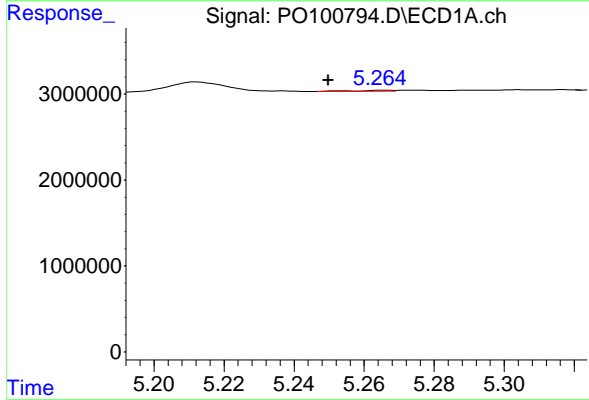
R.T.: 4.714 min
 Delta R.T.: -0.007 min
 Response: 32577
 Conc: 0.49 ng/ml

Instrument :
 ECD_O
 ClientSampleId :
 PIERS



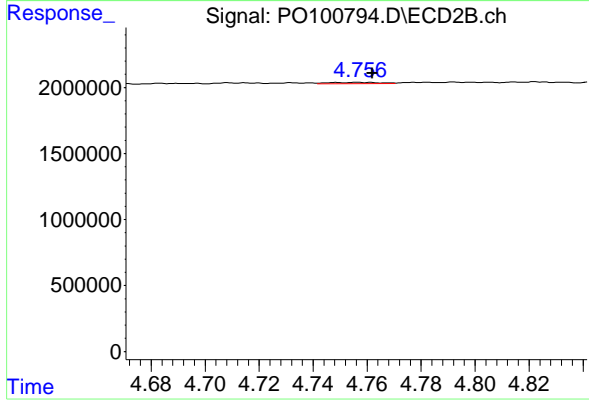
#11 AR-1232-1

R.T.: 4.021 min
 Delta R.T.: -0.005 min
 Response: 305528
 Conc: 6.46 ng/ml



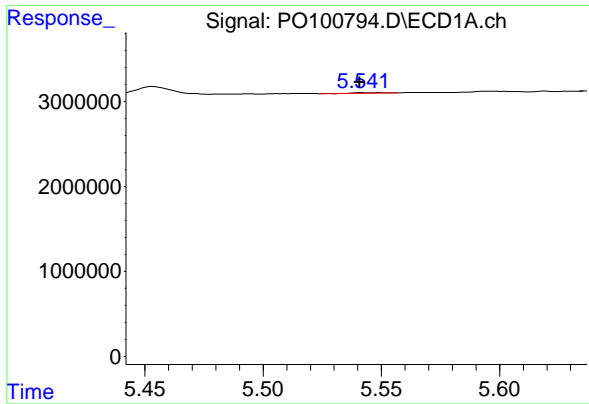
#12 AR-1232-2

R.T.: 5.265 min
 Delta R.T.: 0.015 min
 Response: 83113
 Conc: 2.37 ng/ml



#12 AR-1232-2

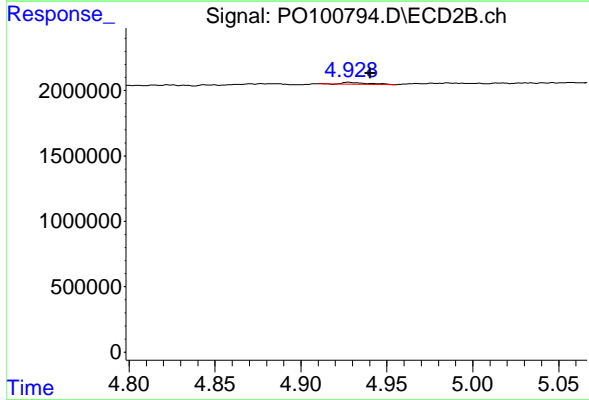
R.T.: 4.757 min
 Delta R.T.: -0.005 min
 Response: 125641
 Conc: 3.01 ng/ml



#13 AR-1232-3

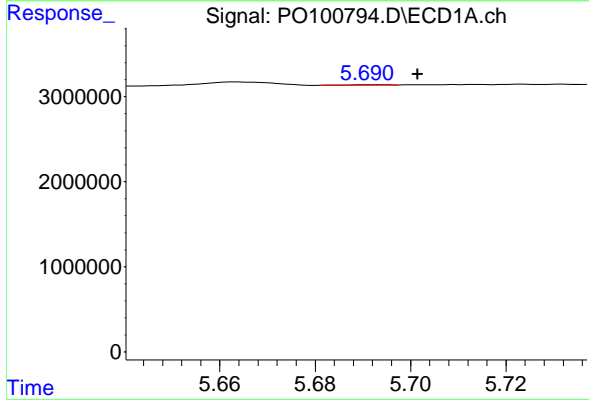
R.T.: 5.542 min
 Delta R.T.: 0.001 min
 Response: 52054
 Conc: 0.87 ng/ml

Instrument :
 ECD_O
 ClientSampleId :
 PIERS



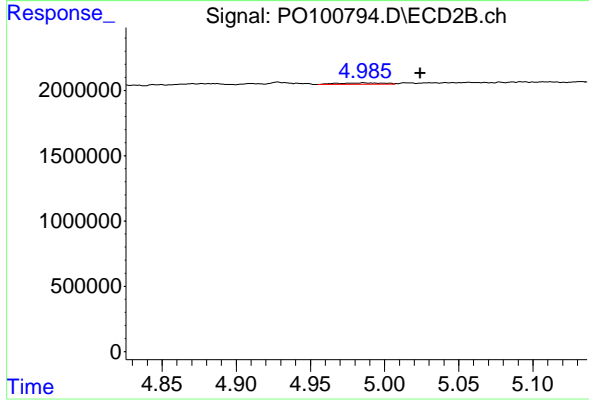
#13 AR-1232-3

R.T.: 4.929 min
 Delta R.T.: -0.012 min
 Response: 128939
 Conc: 6.01 ng/ml



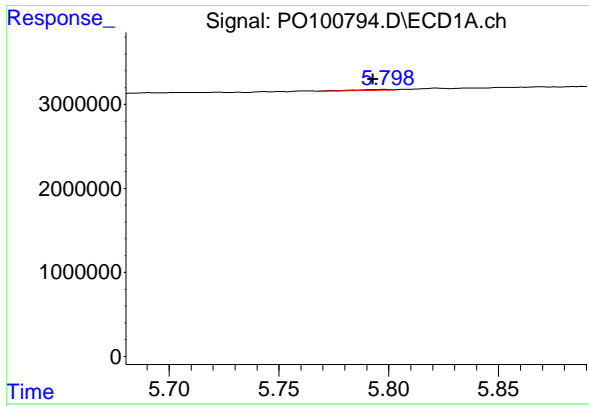
#14 AR-1232-4

R.T.: 5.691 min
 Delta R.T.: -0.010 min
 Response: 27858
 Conc: 1.02 ng/ml



#14 AR-1232-4

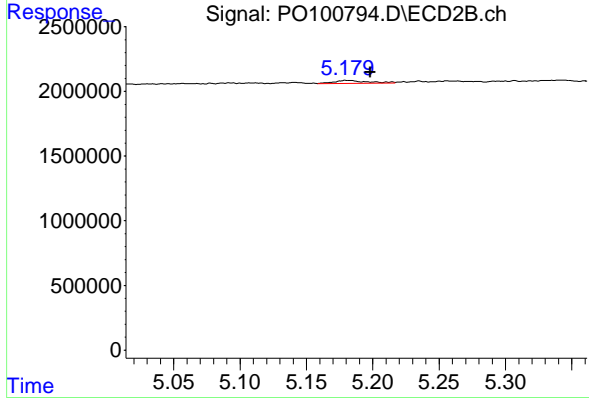
R.T.: 4.986 min
 Delta R.T.: -0.038 min
 Response: 219107
 Conc: 10.31 ng/ml



#15 AR-1232-5

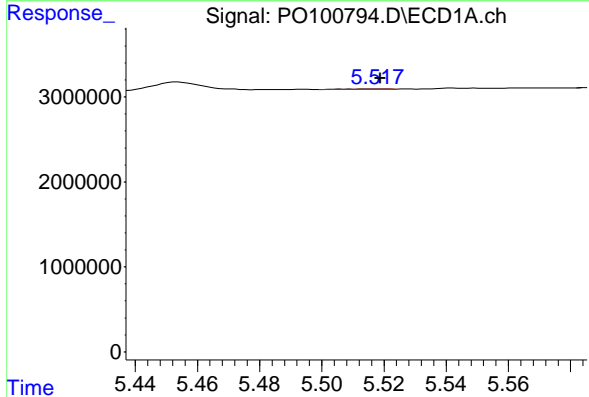
R.T.: 5.799 min
 Delta R.T.: 0.006 min
 Response: 87585
 Conc: 3.64 ng/ml

Instrument :
 ECD_O
 ClientSampleId :
 PIERS



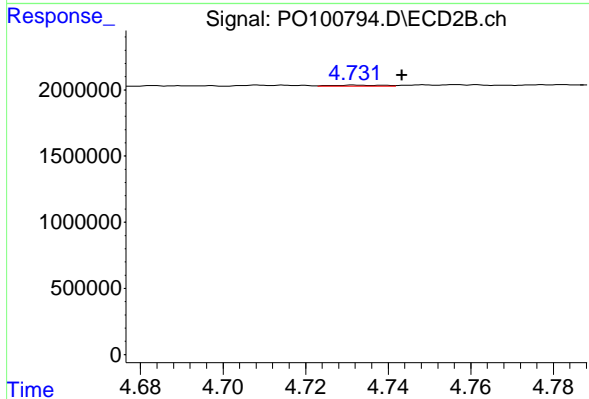
#15 AR-1232-5

R.T.: 5.181 min
 Delta R.T.: -0.017 min
 Response: 403829
 Conc: 18.48 ng/ml



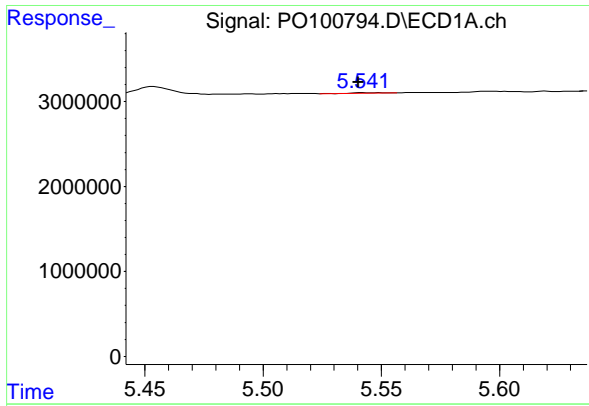
#16 AR-1242-1

R.T.: 5.518 min
 Delta R.T.: 0.000 min
 Response: 45245
 Conc: 0.64 ng/ml



#16 AR-1242-1

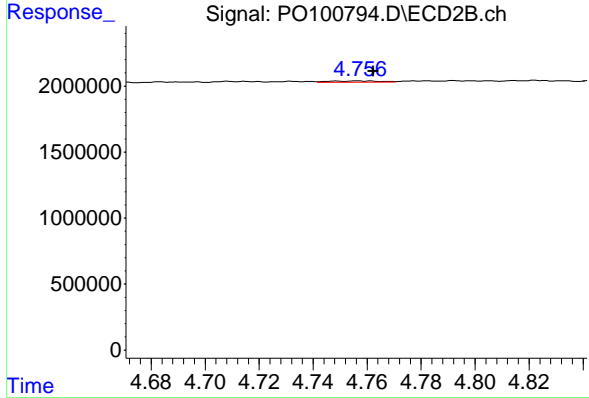
R.T.: 4.732 min
 Delta R.T.: -0.011 min
 Response: 71348
 Conc: 1.37 ng/ml



#17 AR-1242-2

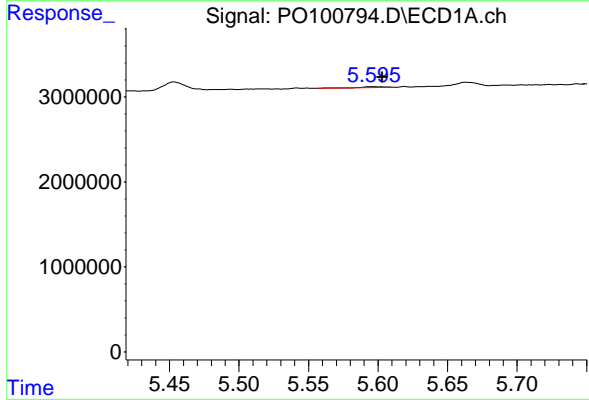
R.T.: 5.542 min
 Delta R.T.: 0.002 min
 Response: 52054
 Conc: 0.50 ng/ml

Instrument :
 ECD_O
 ClientSampleId :
 PIERS



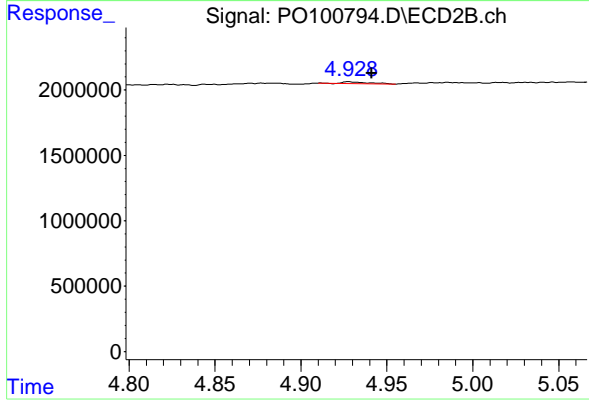
#17 AR-1242-2

R.T.: 4.757 min
 Delta R.T.: -0.006 min
 Response: 125641
 Conc: 1.73 ng/ml



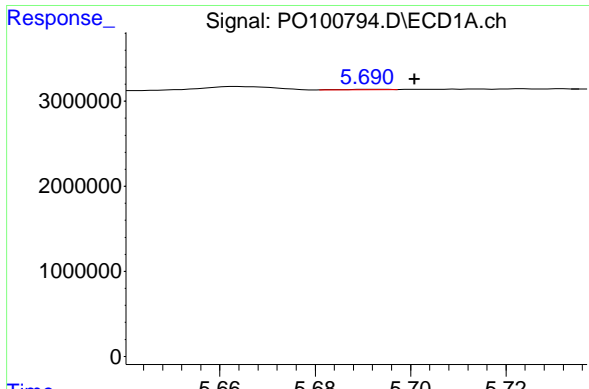
#18 AR-1242-3

R.T.: 5.595 min
 Delta R.T.: -0.008 min
 Response: 127092
 Conc: 1.96 ng/ml



#18 AR-1242-3

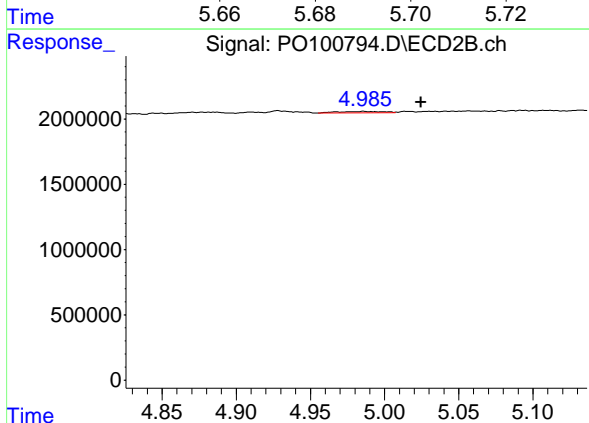
R.T.: 4.929 min
 Delta R.T.: -0.012 min
 Response: 128939
 Conc: 3.37 ng/ml



#19 AR-1242-4

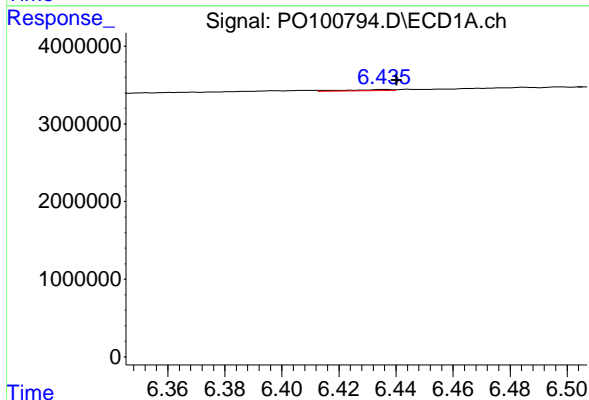
R.T.: 5.691 min
 Delta R.T.: -0.010 min
 Response: 27858
 Conc: 0.56 ng/ml

Instrument :
 ECD_O
 ClientSampleId :
 PIERS



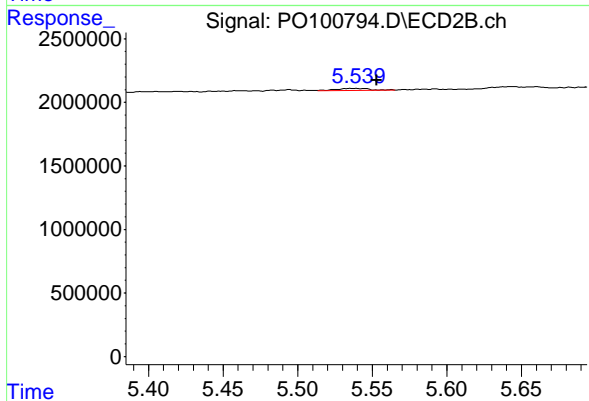
#19 AR-1242-4

R.T.: 4.986 min
 Delta R.T.: -0.039 min
 Response: 219107
 Conc: 5.26 ng/ml



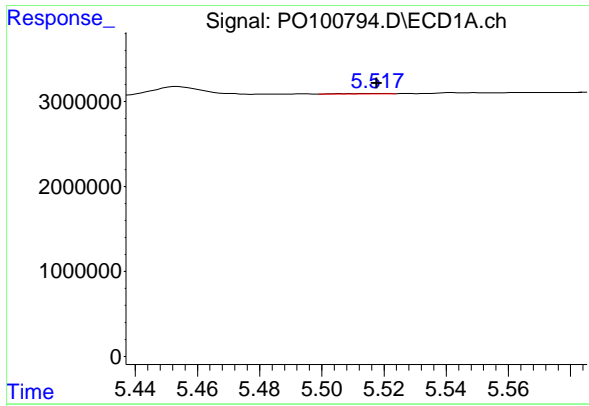
#20 AR-1242-5

R.T.: 6.436 min
 Delta R.T.: -0.004 min
 Response: 181671
 Conc: 3.51 ng/ml



#20 AR-1242-5

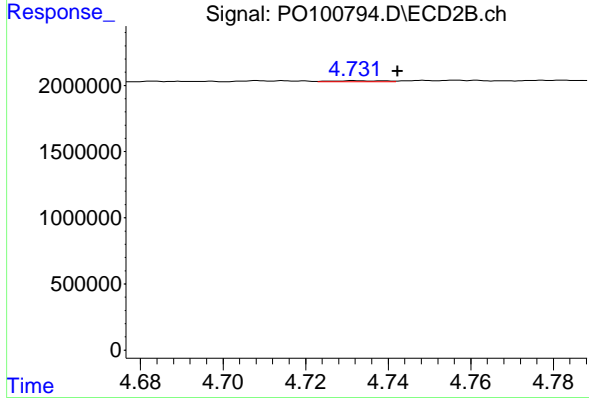
R.T.: 5.536 min
 Delta R.T.: -0.017 min
 Response: 272972
 Conc: 5.95 ng/ml



#21 AR-1248-1

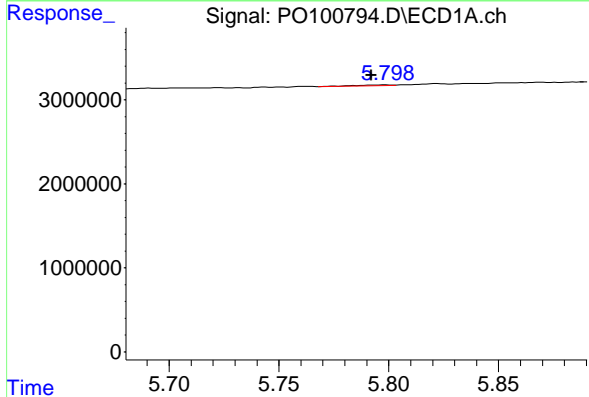
R.T.: 5.518 min
 Delta R.T.: 0.000 min
 Response: 45245
 Conc: 0.82 ng/ml

Instrument :
 ECD_O
 ClientSampleId :
 PIERS



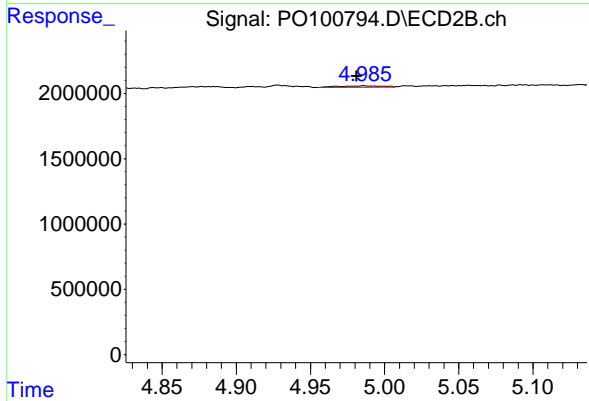
#21 AR-1248-1

R.T.: 4.732 min
 Delta R.T.: -0.010 min
 Response: 71348
 Conc: 1.78 ng/ml



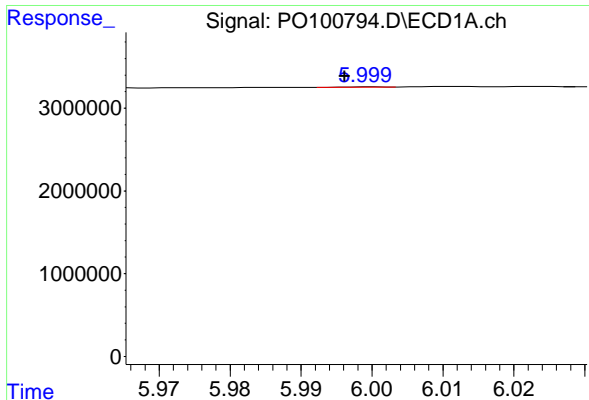
#22 AR-1248-2

R.T.: 5.799 min
 Delta R.T.: 0.007 min
 Response: 87585
 Conc: 1.01 ng/ml



#22 AR-1248-2

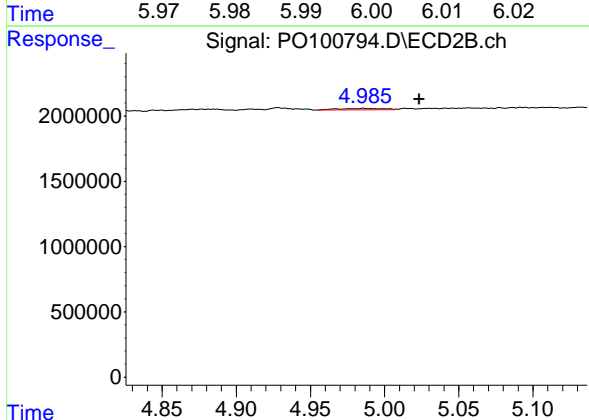
R.T.: 4.986 min
 Delta R.T.: 0.004 min
 Response: 219107
 Conc: 3.64 ng/ml



#23 AR-1248-3

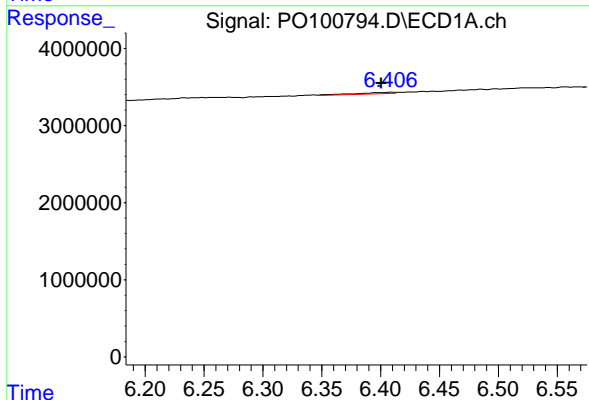
R.T.: 6.000 min
 Delta R.T.: 0.003 min
 Response: 18982
 Conc: 0.22 ng/ml

Instrument :
 ECD_O
 ClientSampleId :
 PIERS



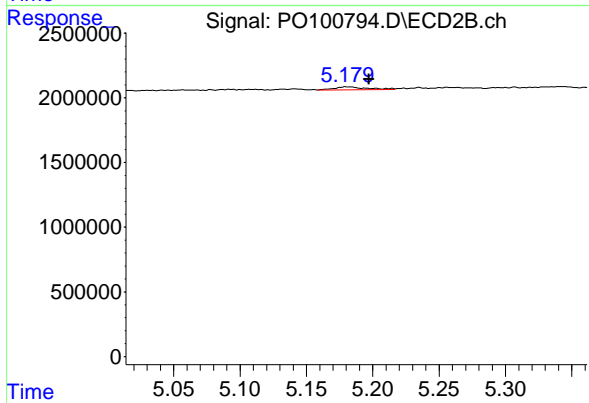
#23 AR-1248-3

R.T.: 4.986 min
 Delta R.T.: -0.038 min
 Response: 219107
 Conc: 3.51 ng/ml



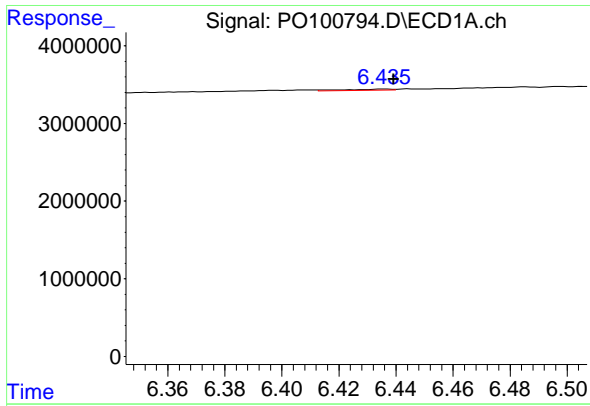
#24 AR-1248-4

R.T.: 6.408 min
 Delta R.T.: 0.007 min
 Response: 411457
 Conc: 4.58 ng/ml



#24 AR-1248-4

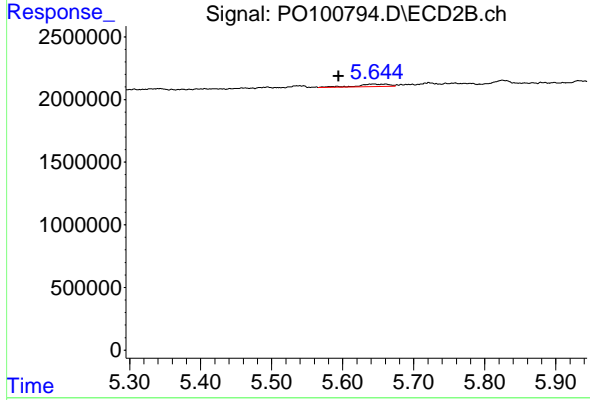
R.T.: 5.181 min
 Delta R.T.: -0.016 min
 Response: 403829
 Conc: 5.61 ng/ml



#25 AR-1248-5

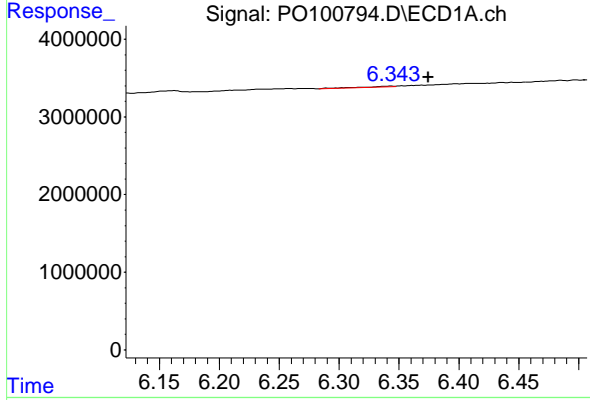
R.T.: 6.436 min
 Delta R.T.: -0.003 min
 Response: 181671
 Conc: 2.02 ng/ml

Instrument :
 ECD_O
 ClientSampleId :
 PIERS



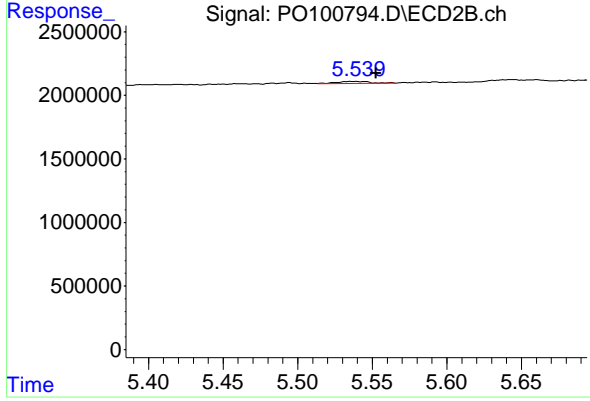
#25 AR-1248-5

R.T.: 5.643 min
 Delta R.T.: 0.049 min
 Response: 591804
 Conc: 9.59 ng/ml



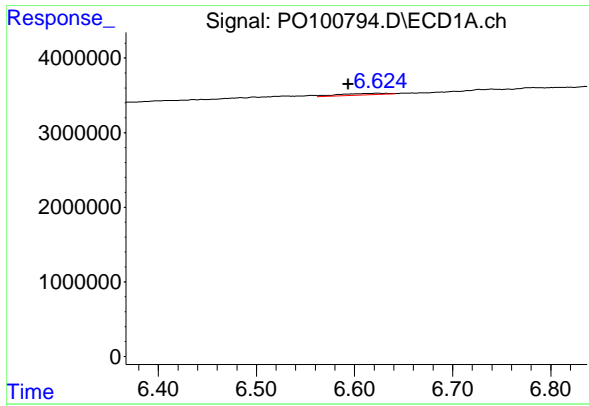
#26 AR-1254-1

R.T.: 6.344 min
 Delta R.T.: -0.031 min
 Response: 182618
 Conc: 1.74 ng/ml



#26 AR-1254-1

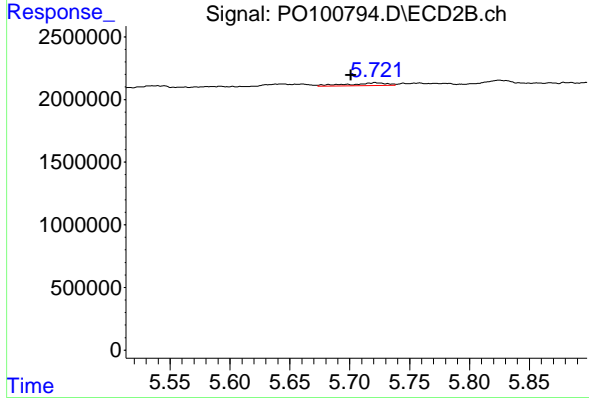
R.T.: 5.536 min
 Delta R.T.: -0.016 min
 Response: 272972
 Conc: 2.66 ng/ml



#27 AR-1254-2

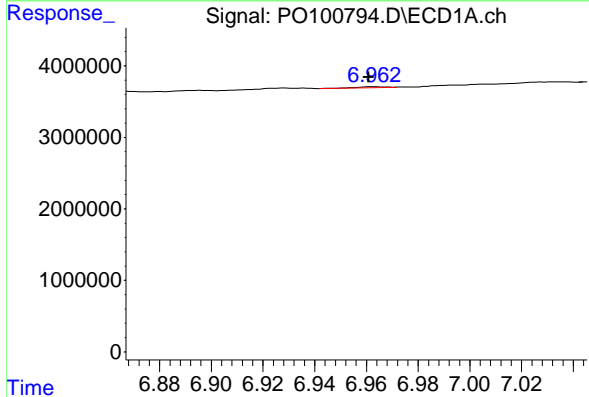
R.T.: 6.624 min
 Delta R.T.: 0.030 min
 Response: 712379
 Conc: 4.82 ng/ml

Instrument :
 ECD_O
 ClientSampleId :
 PIERS



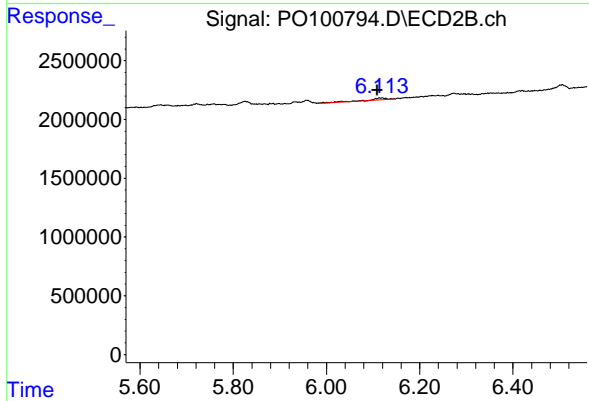
#27 AR-1254-2

R.T.: 5.722 min
 Delta R.T.: 0.021 min
 Response: 493443
 Conc: 5.37 ng/ml



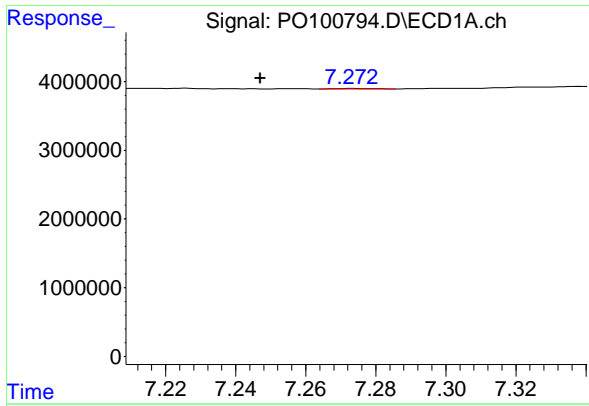
#28 AR-1254-3

R.T.: 6.963 min
 Delta R.T.: 0.002 min
 Response: 100345
 Conc: 0.72 ng/ml



#28 AR-1254-3

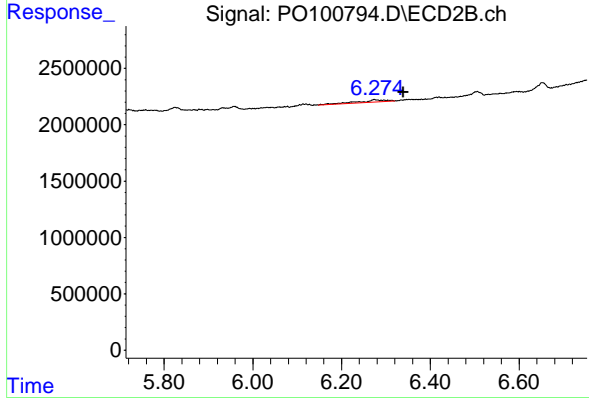
R.T.: 6.117 min
 Delta R.T.: 0.008 min
 Response: 389866
 Conc: 2.88 ng/ml



#29 AR-1254-4

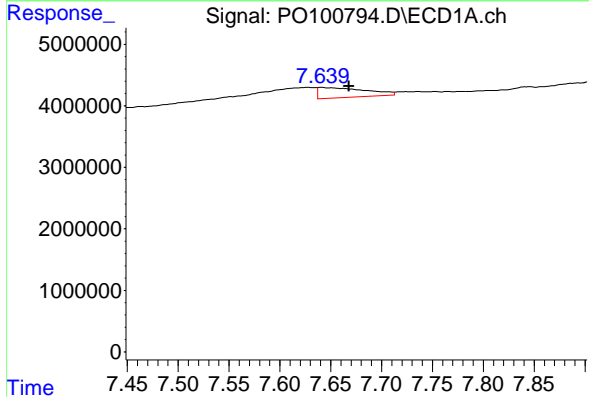
R.T.: 7.273 min
 Delta R.T.: 0.026 min
 Response: 43225
 Conc: 0.51 ng/ml

Instrument :
 ECD_O
 ClientSampleId :
 PIERS



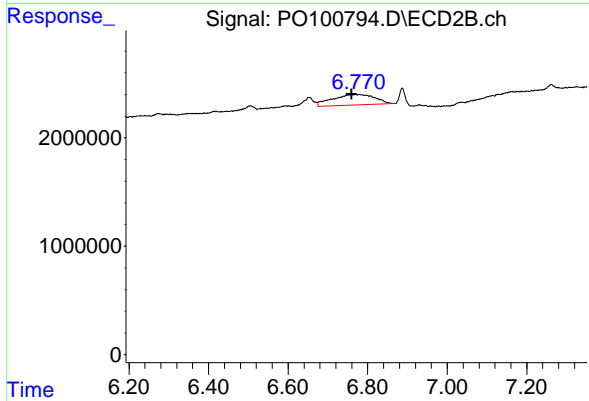
#29 AR-1254-4

R.T.: 6.274 min
 Delta R.T.: -0.065 min
 Response: 883918
 Conc: 12.25 ng/ml



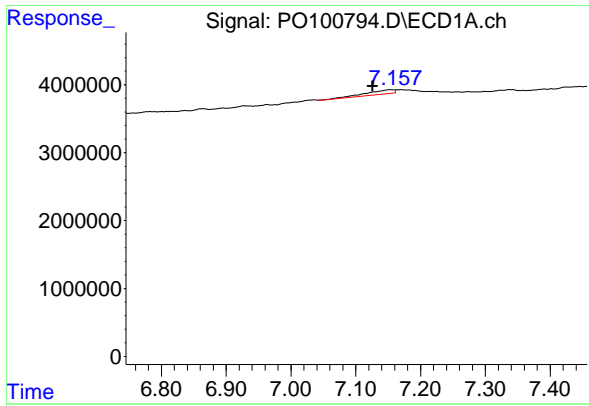
#30 AR-1254-5

R.T.: 7.641 min
 Delta R.T.: -0.027 min
 Response: 5357348
 Conc: 45.28 ng/ml



#30 AR-1254-5

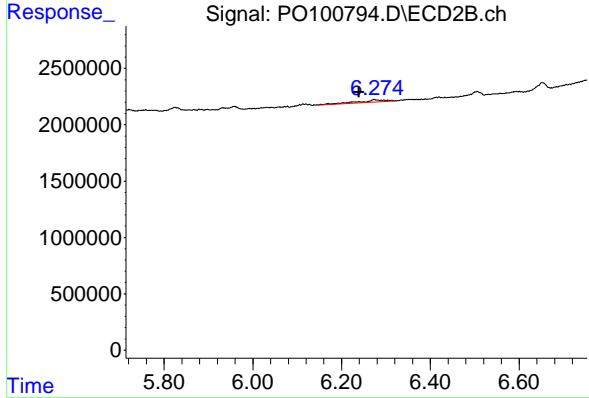
R.T.: 6.779 min
 Delta R.T.: 0.020 min
 Response: 7252857
 Conc: 62.95 ng/ml



#31 AR-1260-1

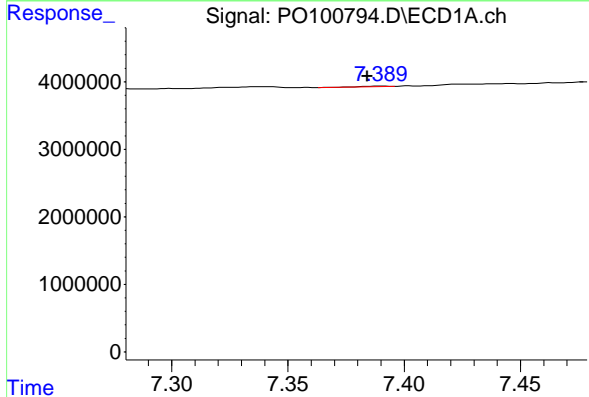
R.T.: 7.154 min
 Delta R.T.: 0.028 min
 Response: 1945331
 Conc: 14.20 ng/ml

Instrument :
 ECD_O
 ClientSampleId :
 PIERS



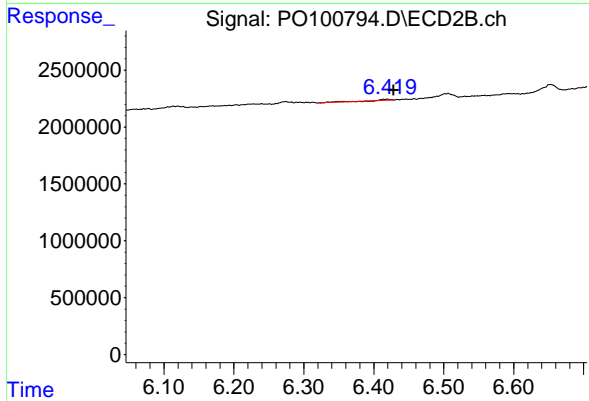
#31 AR-1260-1

R.T.: 6.274 min
 Delta R.T.: 0.034 min
 Response: 883918
 Conc: 9.28 ng/ml



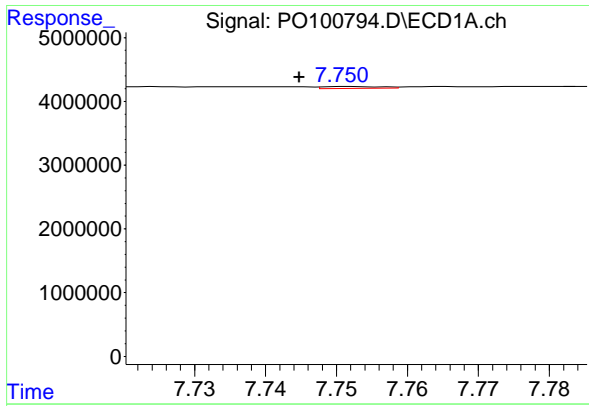
#32 AR-1260-2

R.T.: 7.390 min
 Delta R.T.: 0.006 min
 Response: 72880
 Conc: 0.58 ng/ml



#32 AR-1260-2

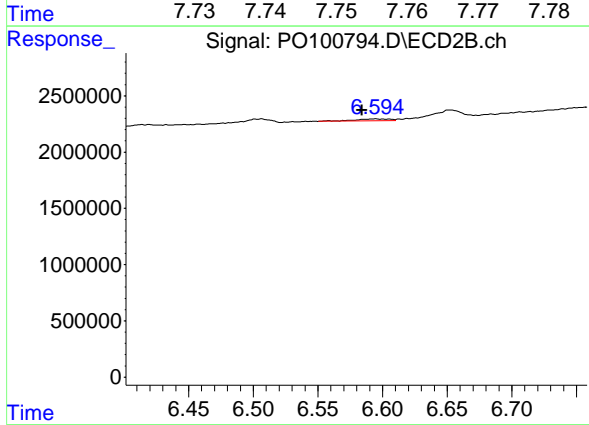
R.T.: 6.418 min
 Delta R.T.: -0.010 min
 Response: 119672
 Conc: 1.11 ng/ml



#33 AR-1260-3

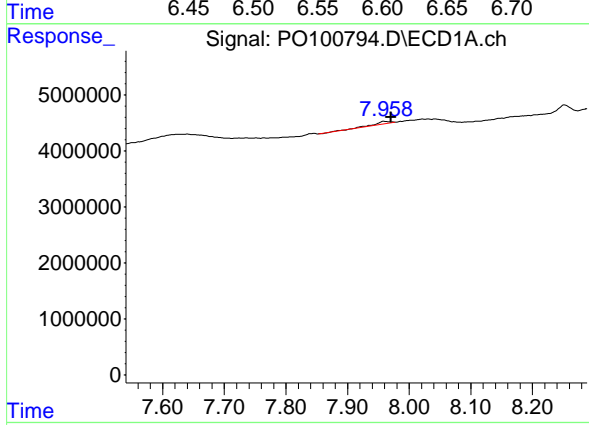
R.T.: 7.752 min
 Delta R.T.: 0.007 min
 Response: 161793
 Conc: 1.67 ng/ml

Instrument :
 ECD_O
 ClientSampleId :
 PIERS



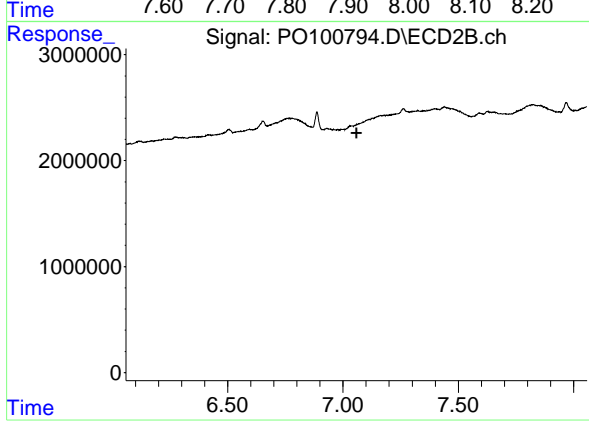
#33 AR-1260-3

R.T.: 6.595 min
 Delta R.T.: 0.011 min
 Response: 299308
 Conc: 2.92 ng/ml



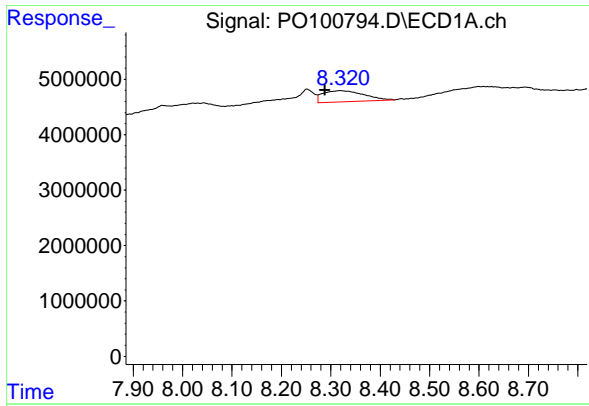
#34 AR-1260-4

R.T.: 7.959 min
 Delta R.T.: -0.012 min
 Response: 624594
 Conc: 5.92 ng/ml



#34 AR-1260-4

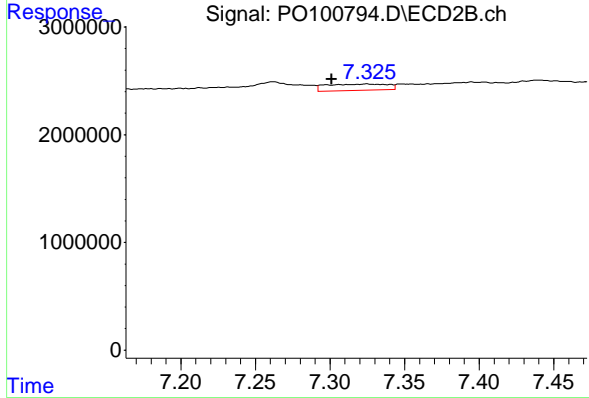
R.T.: 0.000 min
 Exp R.T. : 7.058 min
 Response: 0
 Conc: N.D.



#35 AR-1260-5

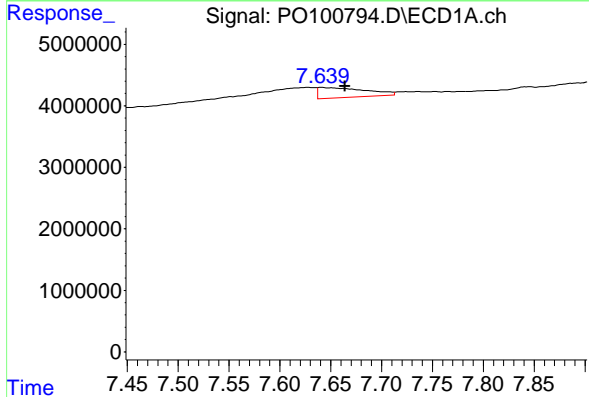
R.T.: 8.320 min
 Delta R.T.: 0.032 min
 Response: 11618448
 Conc: 55.04 ng/ml

Instrument :
 ECD_O
 ClientSampleId :
 PIERS



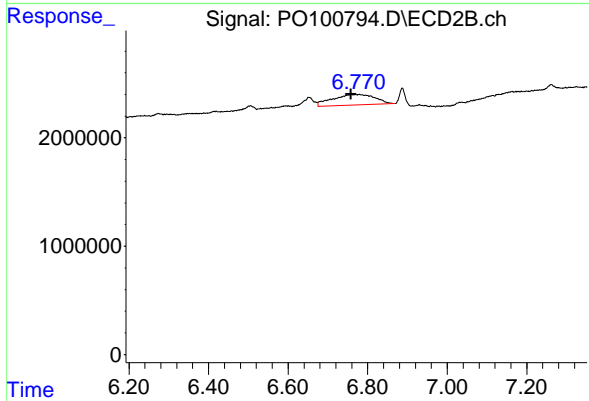
#35 AR-1260-5

R.T.: 7.325 min
 Delta R.T.: 0.024 min
 Response: 1673261
 Conc: 9.27 ng/ml



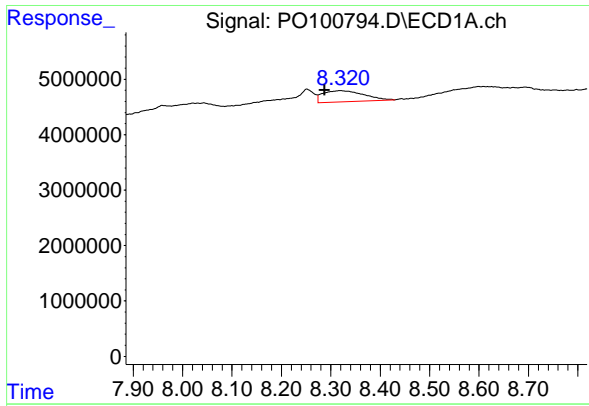
#36 AR-1262-1

R.T.: 7.641 min
 Delta R.T.: -0.023 min
 Response: 5357348
 Conc: 53.63 ng/ml



#36 AR-1262-1

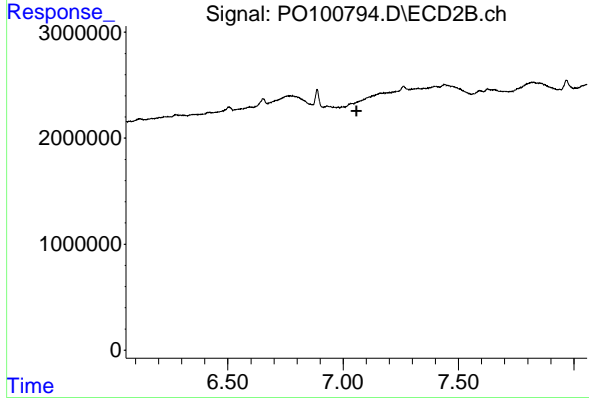
R.T.: 6.779 min
 Delta R.T.: 0.021 min
 Response: 7252857
 Conc: 116.27 ng/ml



#37 AR-1262-2

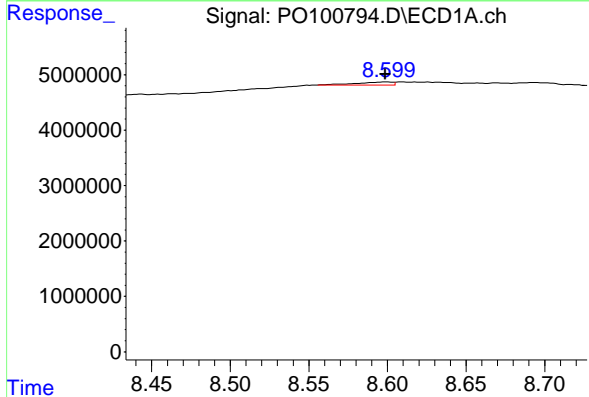
R.T.: 8.320 min
 Delta R.T.: 0.032 min
 Response: 11618448
 Conc: 48.96 ng/ml

Instrument :
 ECD_O
 ClientSampleId :
 PIERS



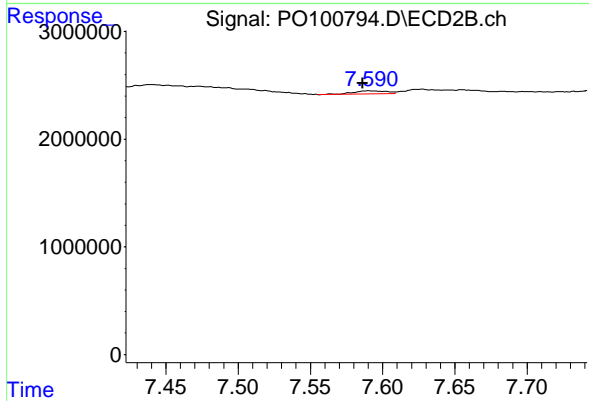
#37 AR-1262-2

R.T.: 0.000 min
 Exp R.T. : 7.058 min
 Response: 0
 Conc: N.D.



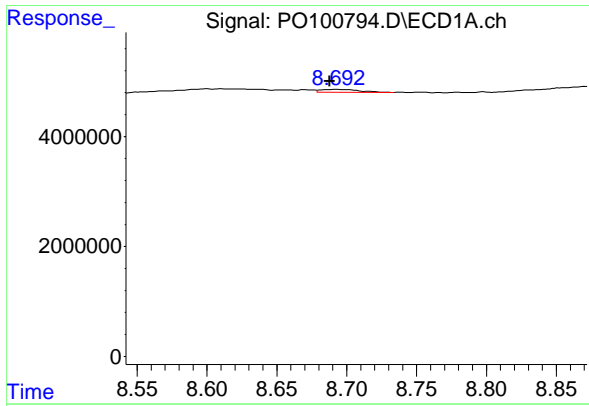
#38 AR-1262-3

R.T.: 8.600 min
 Delta R.T.: 0.001 min
 Response: 884826
 Conc: 5.45 ng/ml



#38 AR-1262-3

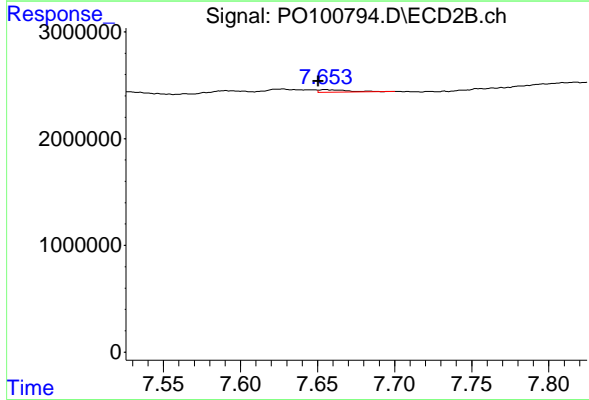
R.T.: 7.591 min
 Delta R.T.: 0.005 min
 Response: 432195
 Conc: 5.61 ng/ml



#39 AR-1262-4

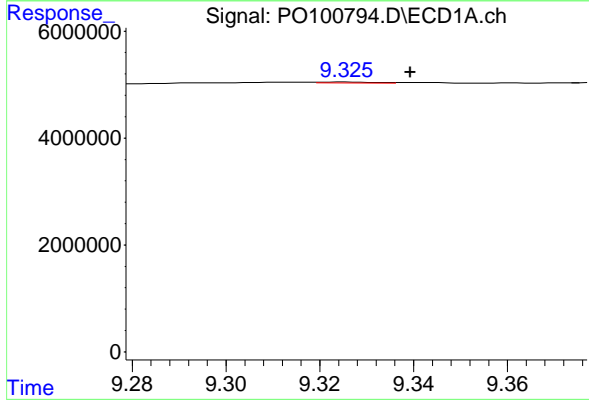
R.T.: 8.693 min
 Delta R.T.: 0.005 min
 Response: 982498
 Conc: 7.62 ng/ml

Instrument :
 ECD_O
 ClientSampleId :
 PIERS



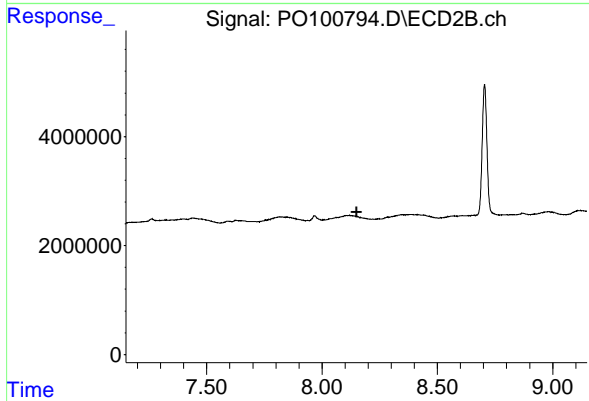
#39 AR-1262-4

R.T.: 7.655 min
 Delta R.T.: 0.004 min
 Response: 324444
 Conc: 2.20 ng/ml



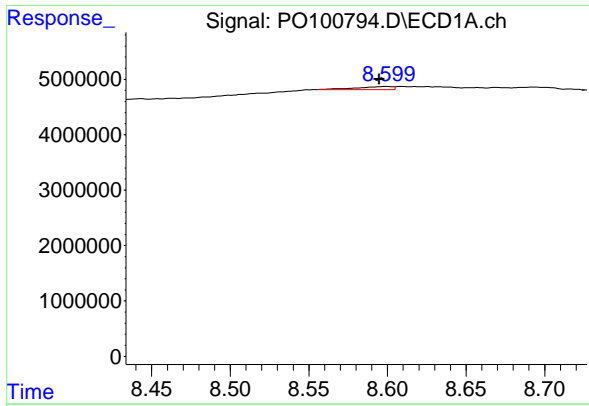
#40 AR-1262-5

R.T.: 9.326 min
 Delta R.T.: -0.014 min
 Response: 133414
 Conc: 1.67 ng/ml



#40 AR-1262-5

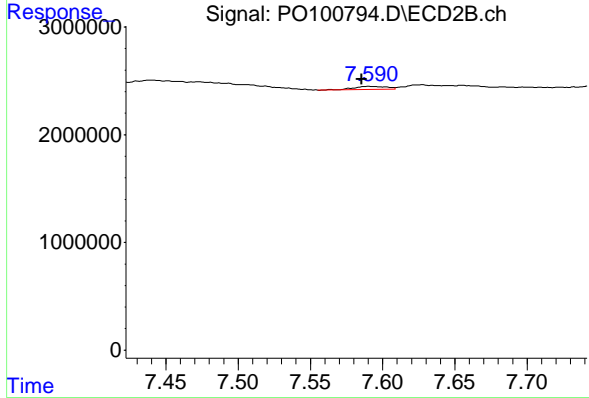
R.T.: 0.000 min
 Exp R.T. : 8.149 min
 Response: 0
 Conc: N.D.



#41 AR-1268-1

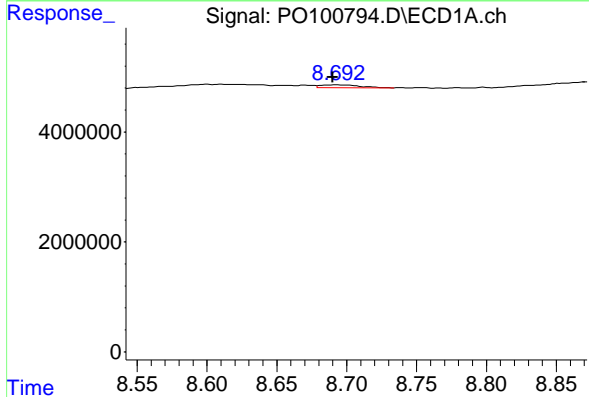
R.T.: 8.600 min
 Delta R.T.: 0.005 min
 Response: 884826
 Conc: 3.13 ng/ml

Instrument :
 ECD_O
 ClientSampleId :
 PIERS



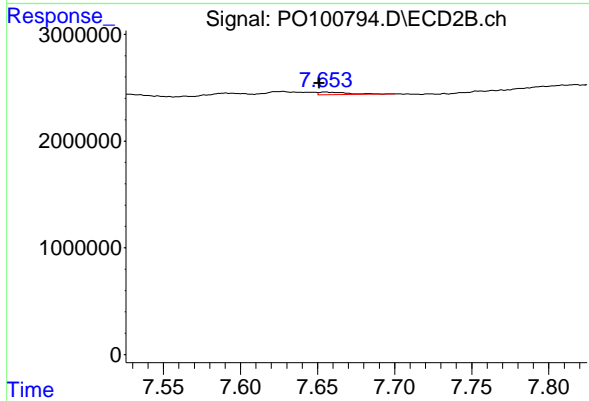
#41 AR-1268-1

R.T.: 7.591 min
 Delta R.T.: 0.005 min
 Response: 432195
 Conc: 1.95 ng/ml



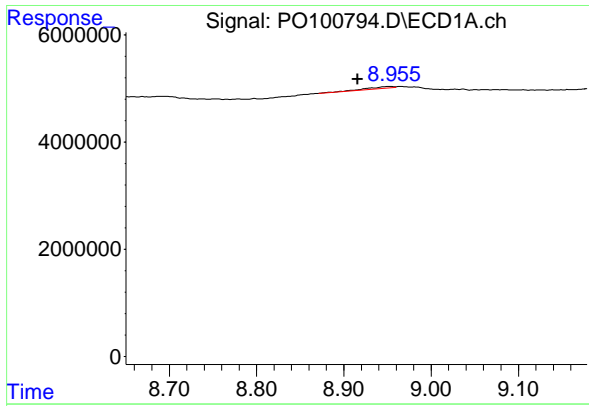
#42 AR-1268-2

R.T.: 8.693 min
 Delta R.T.: 0.003 min
 Response: 982498
 Conc: 3.89 ng/ml



#42 AR-1268-2

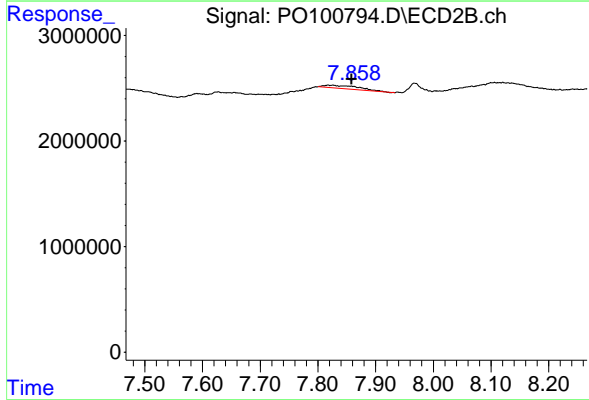
R.T.: 7.655 min
 Delta R.T.: 0.003 min
 Response: 324444
 Conc: 1.60 ng/ml



#43 AR-1268-3

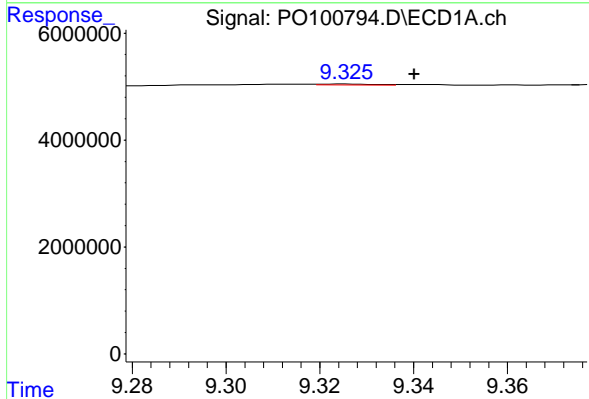
R.T.: 8.954 min
 Delta R.T.: 0.038 min
 Response: 740093
 Conc: 3.24 ng/ml

Instrument :
 ECD_O
 ClientSampleId :
 PIERS



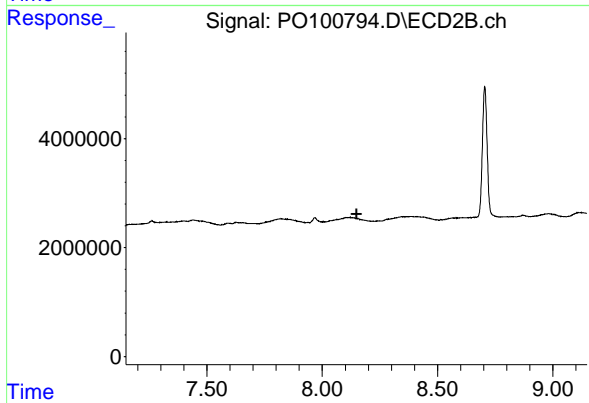
#43 AR-1268-3

R.T.: 7.825 min
 Delta R.T.: -0.033 min
 Response: 1246960
 Conc: 6.61 ng/ml



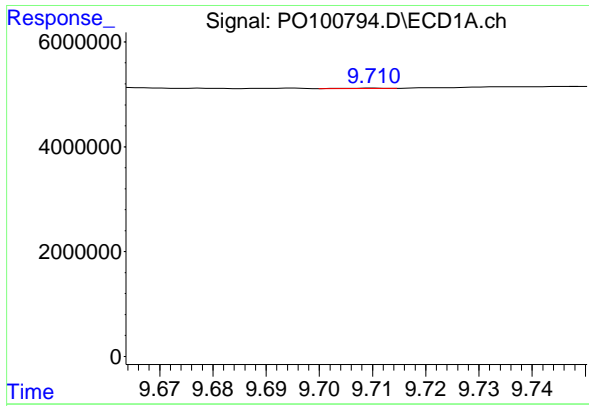
#44 AR-1268-4

R.T.: 9.326 min
 Delta R.T.: -0.014 min
 Response: 133414
 Conc: 1.70 ng/ml



#44 AR-1268-4

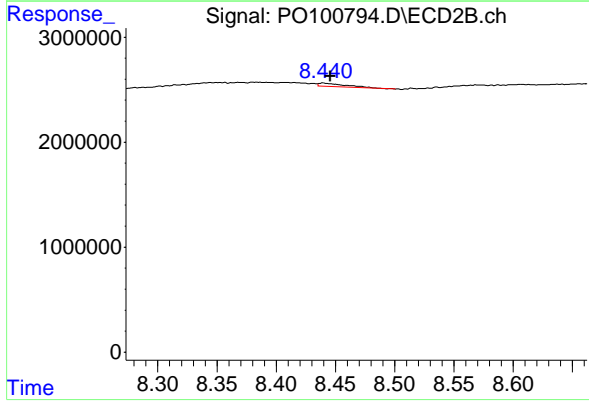
R.T.: 0.000 min
 Exp R.T. : 8.149 min
 Response: 0
 Conc: N.D.



#45 AR-1268-5

R.T.: 9.710 min
 Delta R.T.: -0.044 min
 Response: 41991
 Conc: 0.06 ng/ml

Instrument :
 ECD_O
 ClientSampleId :
 PIERS



#45 AR-1268-5

R.T.: 8.440 min
 Delta R.T.: -0.006 min
 Response: 493902
 Conc: 0.95 ng/ml