

Data Path : Z:\pestpcbsrv\HPCHEM1\ECD_O\Data\P0122723\
 Data File : P0100811.D
 Signal(s) : Signal #1: ECD1A.ch Signal #2: ECD2B.ch
 Acq On : 27 Dec 2023 22:04
 Operator : YP/AJ
 Sample : 06026-05
 Misc :
 ALS Vial : 33 Sample Multiplier: 1

Instrument :
 ECD_O
 ClientSampleId :

Integration File signal 1: autoint1.e
 Integration File signal 2: autoint2.e
 Quant Time: Dec 28 00:27:42 2023
 Quant Method : Z:\pestpcbsrv\HPCHEM1\ECD_O\methods\P0122023.M
 Quant Title : GC EXTRACTABLES
 QLast Update : Thu Dec 21 04:28:19 2023
 Response via : Initial Calibration
 Integrator: ChemStation

Volume Inj. : 2 µl
 Signal #1 Phase : ZB-MR2 Signal #2 Phase: ZB-MR2
 Signal #1 Info : 30Mx0.32mmx 0.50µ Signal #2 Info : 30M x 0.32mm x 0.25µm

Compound	RT#1	RT#2	Resp#1	Resp#2	ng/ml	ng/ml

System Monitoring Compounds						
1) SA Tetrachlo...	4.348	3.644	75486146	43478879	24.192	21.277
2) SA Decachlor...	10.094	8.706	47557744	38126546	22.765	25.260
Target Compounds						
3) L1 AR-1016-1	5.518	4.740	44691727	30526178	520.718	493.279
4) L1 AR-1016-2	5.540	4.759	58009166	36554518	454.429	414.578
5) L1 AR-1016-3	5.601	4.938	37621024	18859192	477.026	403.705
6) L1 AR-1016-4	5.700	4.979	28562868	15880357	468.722	386.967
7) L1 AR-1016-5	5.996	5.195	20171954	15022223	329.529	289.185
8) L2 AR-1221-1	4.552	3.858	8594899	6464377	232.500	257.424
9) L2 AR-1221-2	4.643	3.945	9166339	9635830	330.065	501.803 #
10) L2 AR-1221-3	4.719	4.022	39418735	28547907	472.295	485.111
11) L3 AR-1232-1	4.719	4.022	39418735	28547907	591.262	603.768
12) L3 AR-1232-2	5.249	4.759	45807927	36554518	1306.600	876.398 #
13) L3 AR-1232-3	5.540	4.938	58009166	18859192	972.234	879.068
14) L3 AR-1232-4	5.700	5.021	28562868	17171360	1041.699	808.182
15) L3 AR-1232-5	5.792	5.195	26428029	15022223	1099.200	687.404 #
16) L4 AR-1242-1	5.518	4.740	44691727	30526178	633.650	584.477
17) L4 AR-1242-2	5.540	4.759	58009166	36554518	552.666	504.381
18) L4 AR-1242-3	5.601	4.938	37621024	18859192	578.744	492.196
19) L4 AR-1242-4	5.700	5.021	28562868	17171360	570.377	411.965 #
20) L4 AR-1242-5	6.441	5.550	3565633	2836203	68.892	61.798
21) L5 AR-1248-1	5.518	4.740	44691727	30526178	814.647	763.372
22) L5 AR-1248-2	5.792	4.979	26428029	15880357	305.995	263.957
23) L5 AR-1248-3	5.996	5.021	20171954	17171360	229.818	274.701
24) L5 AR-1248-4	6.401	5.195	3595427	15022223	39.991	208.553 #
25) L5 AR-1248-5	6.441	5.593	3565633	812099	39.724	13.164 #
26) L6 AR-1254-1	6.374	5.550	6091338	2836203	57.947	27.635 #
27) L6 AR-1254-2	6.596	5.701	2051881	397240	13.896	4.324 #
28) L6 AR-1254-3	6.964	6.106	227519	179059	1.625	1.324
29) L6 AR-1254-4	7.188f	6.336	2423547	441380	28.508	6.119 #
30) L6 AR-1254-5	7.629f	6.757	13415235	1450524	113.375	12.589 #
31) L7 AR-1260-1	7.188f	6.239	2423547	317143	17.691	3.329 #
32) L7 AR-1260-2	7.335f	6.425	145306	737888	1.155	6.865 #
33) L7 AR-1260-3	7.755	6.586	725638	296268	7.491	2.891 #
34) L7 AR-1260-4	7.962	7.075	331090	125902	3.138	1.544 #
35) L7 AR-1260-5	8.312	7.304	12300245	328476	58.270	1.820 #
36) L8 AR-1262-1	7.629f	6.757	13415235	1450524	134.287	23.254 #
37) L8 AR-1262-2	8.312	7.075	12300245	125902	51.833	1.114 #
38) L8 AR-1262-3	8.613	7.602	3690661	587012	22.725	7.623 #
39) L8 AR-1262-4	8.690	7.646	1257301	233478	9.752	1.580 #
40) L8 AR-1262-5	9.320	8.137	234846	424264	2.944	6.634 #
41) L9 AR-1268-1	8.613	7.602	3690661	587012	13.061	2.648 #

Data Path : Z:\pestpcbsrv\HPCHEM1\ECD_0\Data\P0122723\
 Data File : P0100811.D
 Signal(s) : Signal #1: ECD1A.ch Signal #2: ECD2B.ch
 Acq On : 27 Dec 2023 22:04
 Operator : YP/AJ
 Sample : 06026-05
 Misc :
 ALS Vial : 33 Sample Multiplier: 1

Instrument :
 ECD_0
 ClientSampleId :

Integration File signal 1: autoint1.e
 Integration File signal 2: autoint2.e
 Quant Time: Dec 28 00:27:42 2023
 Quant Method : Z:\pestpcbsrv\HPCHEM1\ECD_0\methods\P0122023.M
 Quant Title : GC EXTRACTABLES
 QLast Update : Thu Dec 21 04:28:19 2023
 Response via : Initial Calibration
 Integrator: ChemStation

Volume Inj. : 2 µl
 Signal #1 Phase : ZB-MR1 Signal #2 Phase: ZB-MR2
 Signal #1 Info : 30Mx0.32mmx 0.50µ Signal #2 Info : 30M x 0.32mm x 0.25µm

	Compound	RT#1	RT#2	Resp#1	Resp#2	ng/ml	ng/ml
42)	L9 AR-1268-2	8.690	7.655	1257301	358210	4.975	1.771 #
43)	L9 AR-1268-3	8.936	7.857	2194468	819930	9.618	4.346 #
44)	L9 AR-1268-4	9.320	8.137	234846	424264	2.999	6.319 #
45)	L9 AR-1268-5	0.000	8.439	0	2764491	N.D.	5.328 #

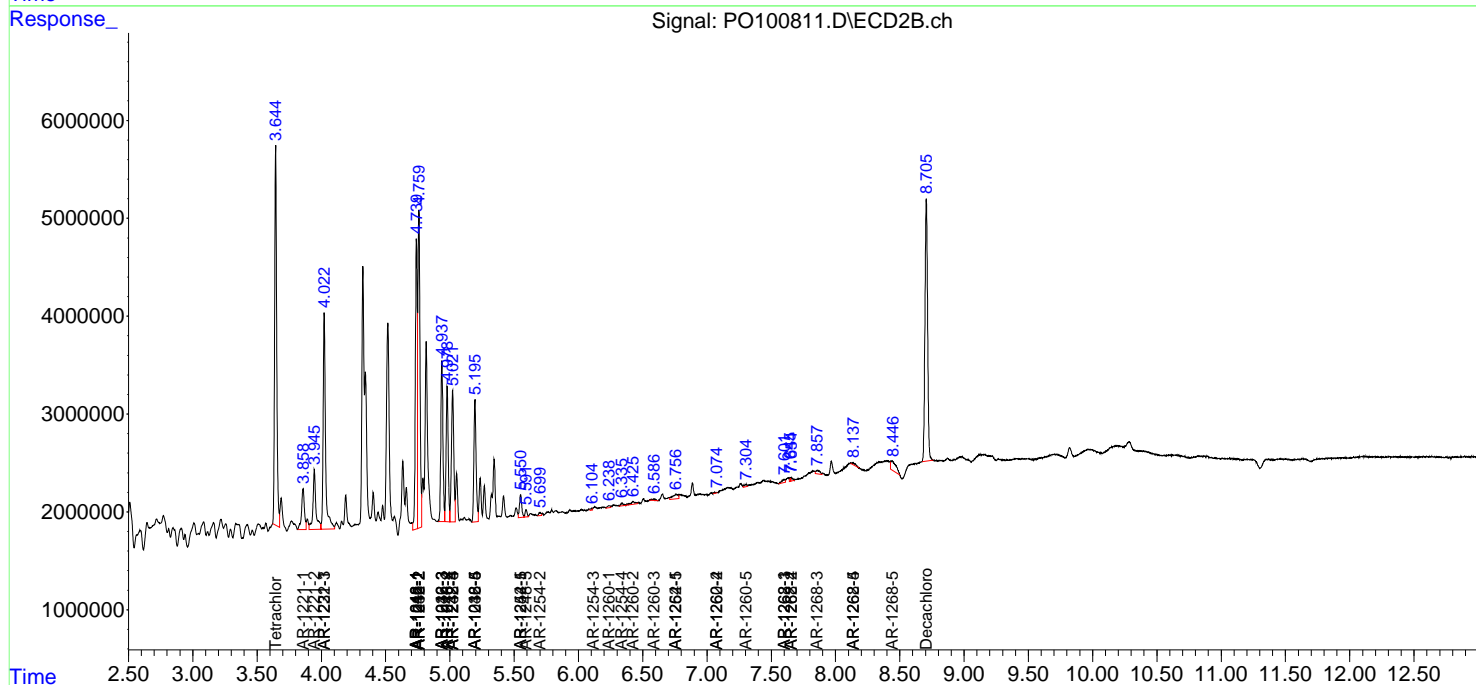
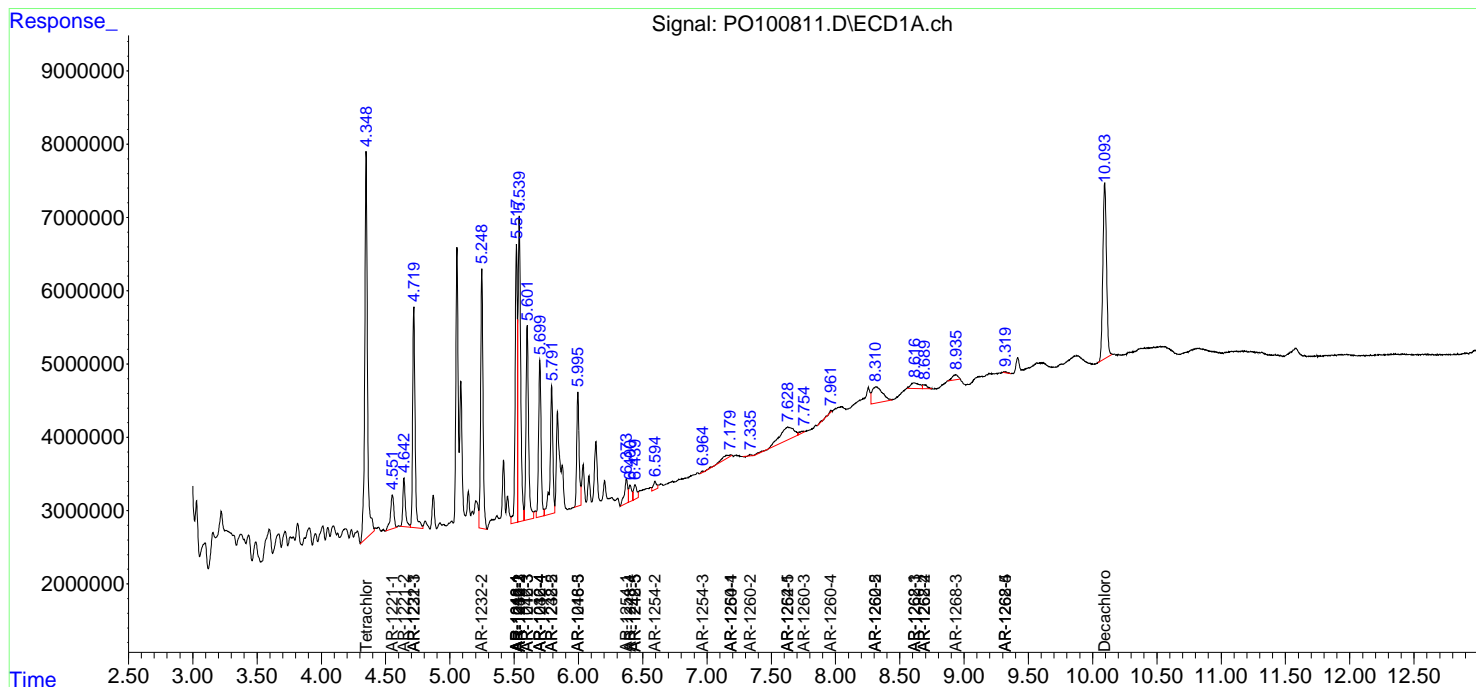
(f)=RT Delta > 1/2 Window (#)=Amounts differ by > 25% (m)=manual int.

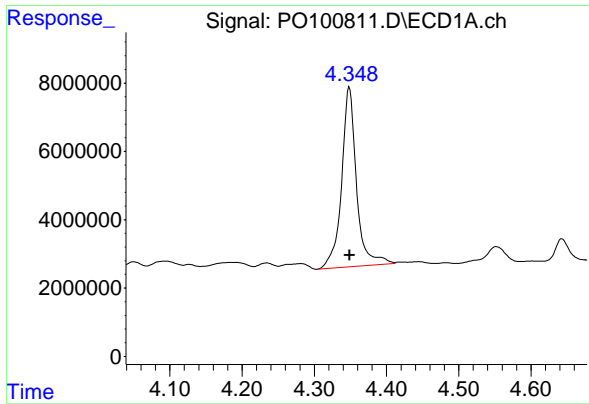
Data Path : Z:\pestpcbsrv\HPCHEM1\ECD_O\Data\PO122723\
 Data File : PO100811.D
 Signal(s) : Signal #1: ECD1A.ch Signal #2: ECD2B.ch
 Acq On : 27 Dec 2023 22:04
 Operator : YP/AJ
 Sample : 06026-05
 Misc :
 ALS Vial : 33 Sample Multiplier: 1

Instrument :
 ECD_O
 ClientSampleId :

Integration File signal 1: autoint1.e
 Integration File signal 2: autoint2.e
 Quant Time: Dec 28 00:27:42 2023
 Quant Method : Z:\pestpcbsrv\HPCHEM1\ECD_O\methods\PO122023.M
 Quant Title : GC EXTRACTABLES
 QLast Update : Thu Dec 21 04:28:19 2023
 Response via : Initial Calibration
 Integrator: ChemStation

Volume Inj. : 2 µl
 Signal #1 Phase : ZB-MR1 Signal #2 Phase: ZB-MR2
 Signal #1 Info : 30Mx0.32mmx 0.50µm Signal #2 Info : 30M x 0.32mm x 0.25µm

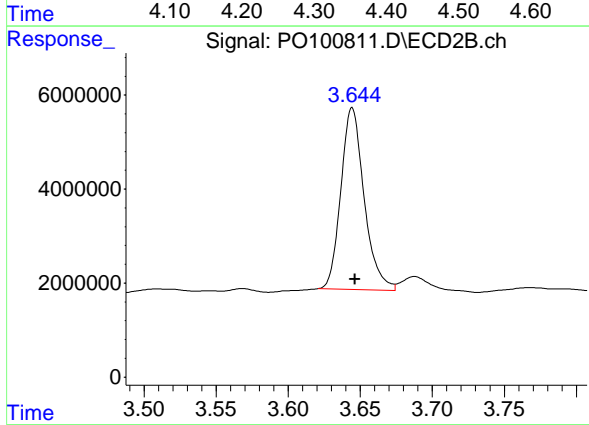




#1 Tetrachloro-m-xylene

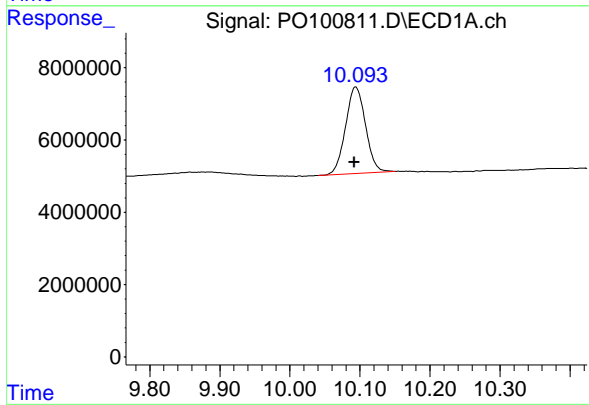
R.T.: 4.348 min
 Delta R.T.: 0.000 min
 Response: 75486146
 Conc: 24.19 ng/ml

Instrument :
 ECD_O
 ClientSampleId :



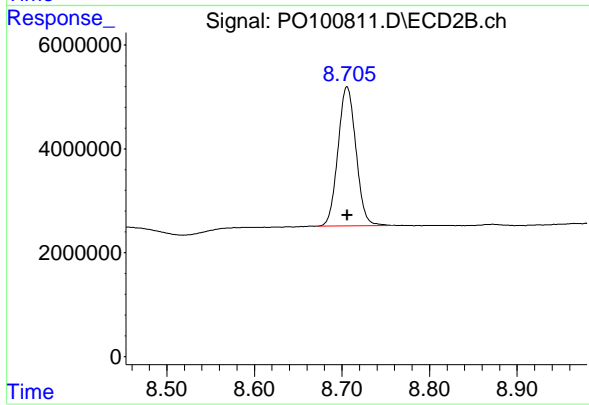
#1 Tetrachloro-m-xylene

R.T.: 3.644 min
 Delta R.T.: -0.002 min
 Response: 43478879
 Conc: 21.28 ng/ml



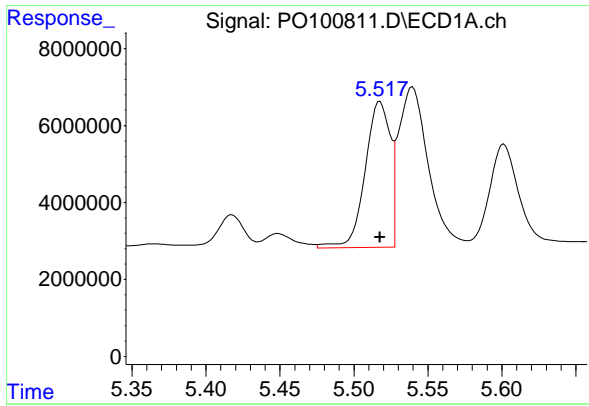
#2 Decachlorobiphenyl

R.T.: 10.094 min
 Delta R.T.: 0.002 min
 Response: 47557744
 Conc: 22.76 ng/ml



#2 Decachlorobiphenyl

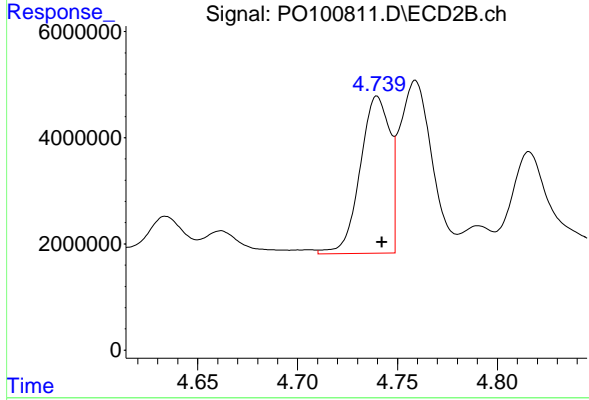
R.T.: 8.706 min
 Delta R.T.: 0.000 min
 Response: 38126546
 Conc: 25.26 ng/ml



#3 AR-1016-1

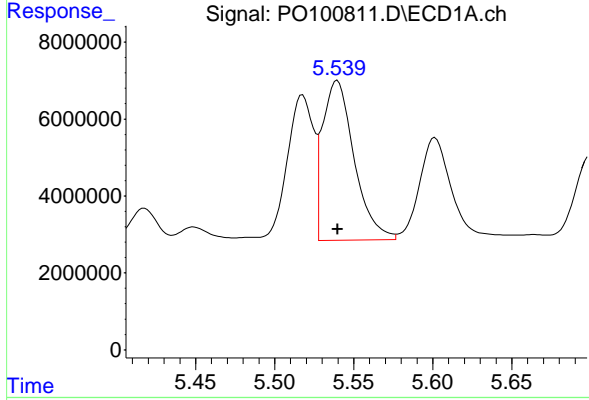
R.T.: 5.518 min
 Delta R.T.: 0.000 min
 Response: 44691727
 Conc: 520.72 ng/ml

Instrument :
 ECD_O
 ClientSampleId :



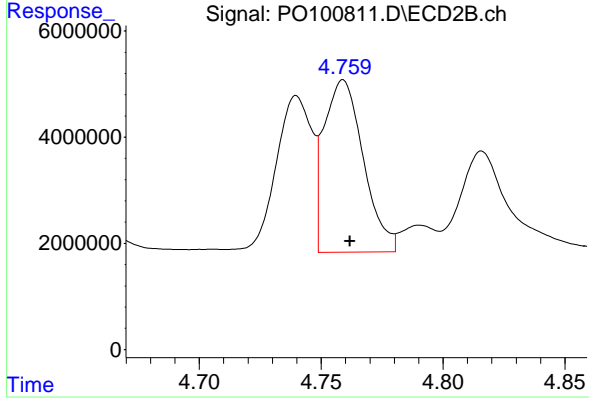
#3 AR-1016-1

R.T.: 4.740 min
 Delta R.T.: -0.002 min
 Response: 30526178
 Conc: 493.28 ng/ml



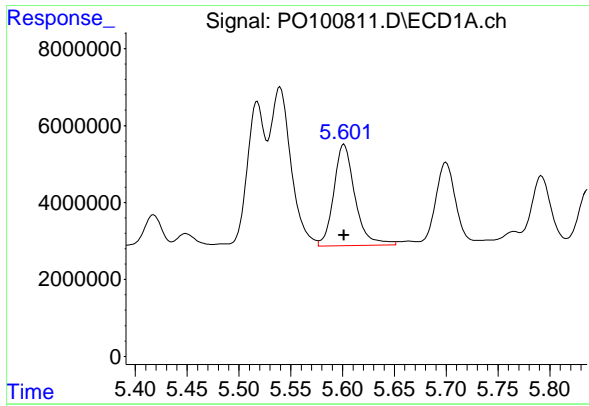
#4 AR-1016-2

R.T.: 5.540 min
 Delta R.T.: 0.000 min
 Response: 58009166
 Conc: 454.43 ng/ml



#4 AR-1016-2

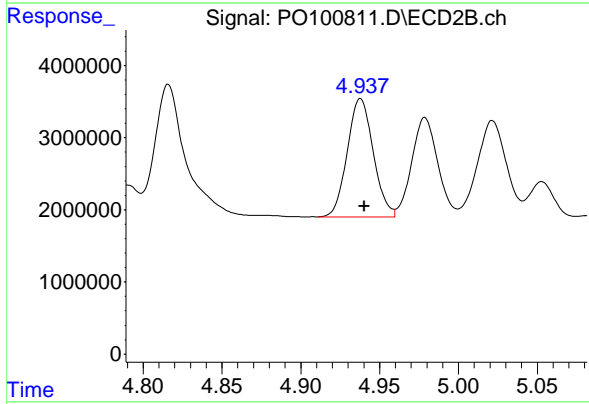
R.T.: 4.759 min
 Delta R.T.: -0.003 min
 Response: 36554518
 Conc: 414.58 ng/ml



#5 AR-1016-3

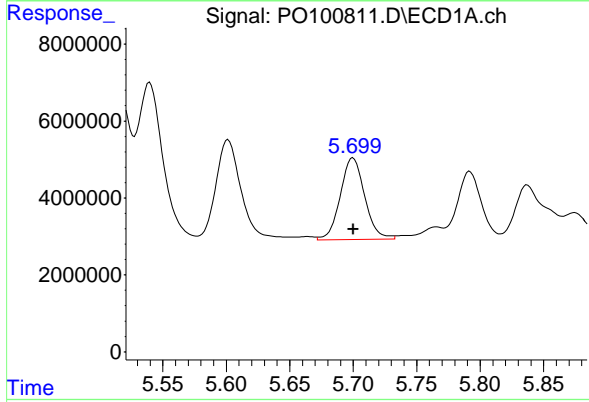
R.T.: 5.601 min
 Delta R.T.: 0.000 min
 Response: 37621024
 Conc: 477.03 ng/ml

Instrument :
 ECD_O
 ClientSampleId :



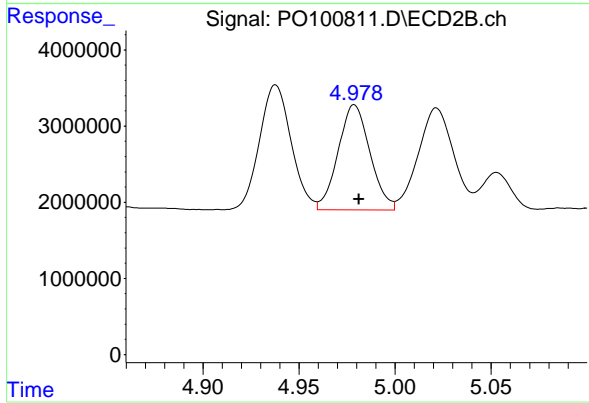
#5 AR-1016-3

R.T.: 4.938 min
 Delta R.T.: -0.002 min
 Response: 18859192
 Conc: 403.71 ng/ml



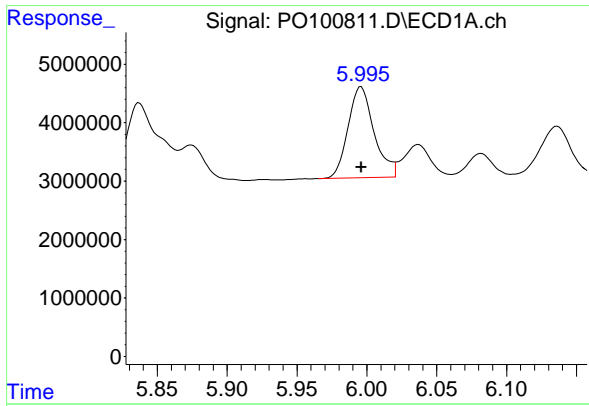
#6 AR-1016-4

R.T.: 5.700 min
 Delta R.T.: 0.000 min
 Response: 28562868
 Conc: 468.72 ng/ml



#6 AR-1016-4

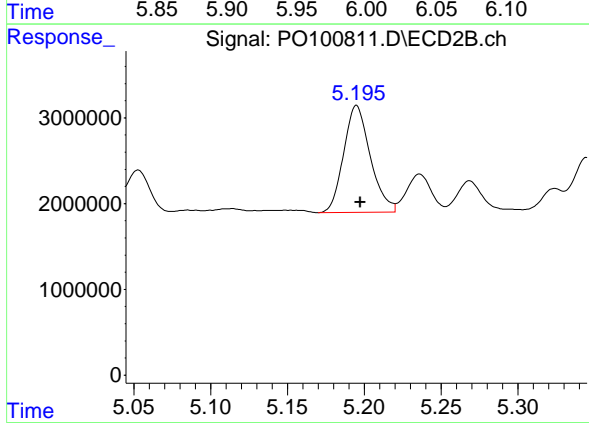
R.T.: 4.979 min
 Delta R.T.: -0.002 min
 Response: 15880357
 Conc: 386.97 ng/ml



#7 AR-1016-5

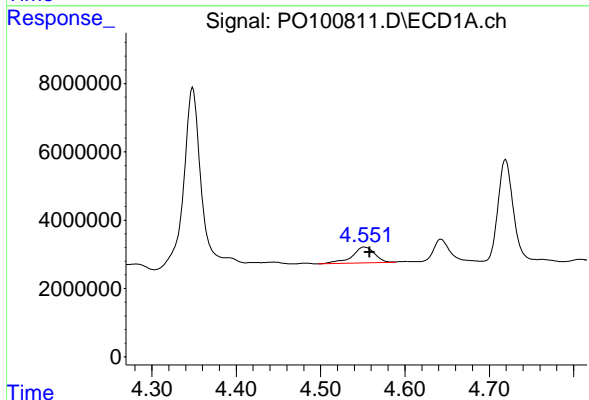
R.T.: 5.996 min
 Delta R.T.: 0.000 min
 Response: 20171954
 Conc: 329.53 ng/ml

Instrument :
 ECD_O
 ClientSampleId :



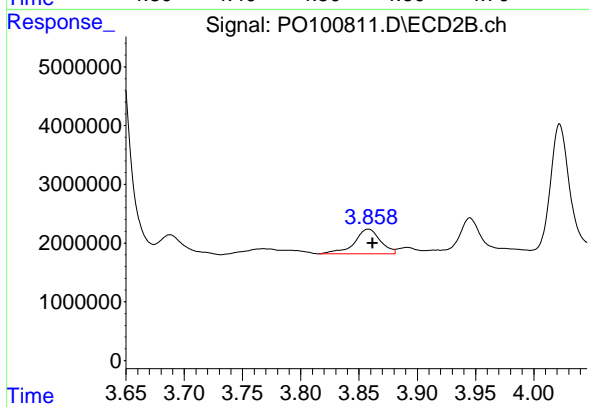
#7 AR-1016-5

R.T.: 5.195 min
 Delta R.T.: -0.002 min
 Response: 15022223
 Conc: 289.18 ng/ml



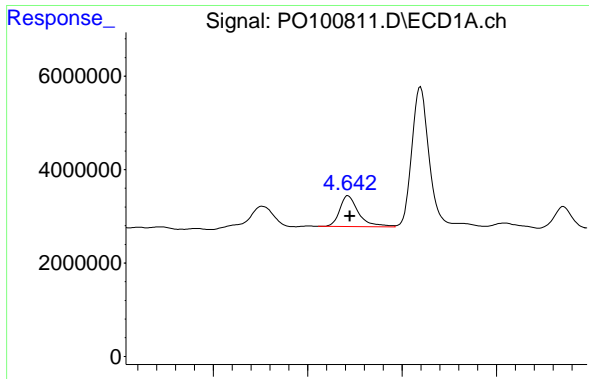
#8 AR-1221-1

R.T.: 4.552 min
 Delta R.T.: -0.006 min
 Response: 8594899
 Conc: 232.50 ng/ml



#8 AR-1221-1

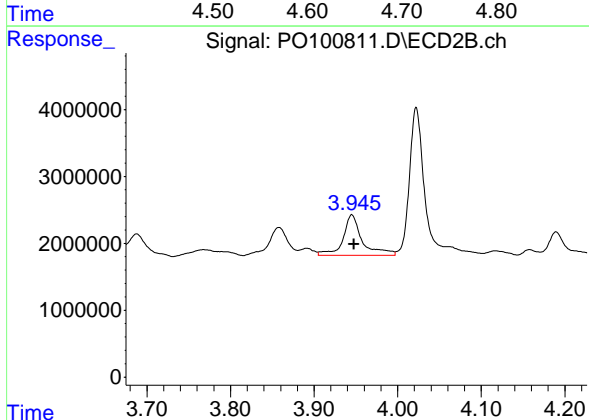
R.T.: 3.858 min
 Delta R.T.: -0.004 min
 Response: 6464377
 Conc: 257.42 ng/ml



#9 AR-1221-2

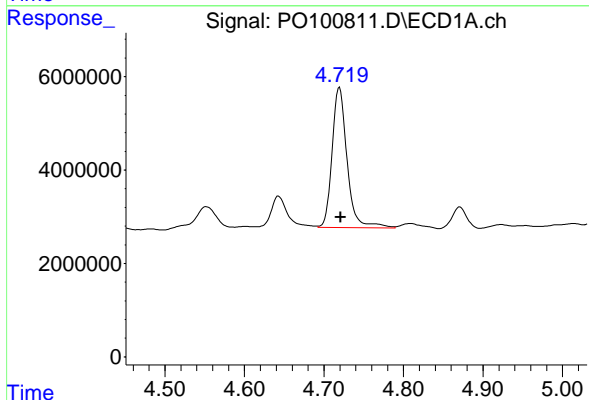
R.T.: 4.643 min
 Delta R.T.: -0.002 min
 Response: 9166339
 Conc: 330.06 ng/ml

Instrument :
 ECD_O
 ClientSampleId :



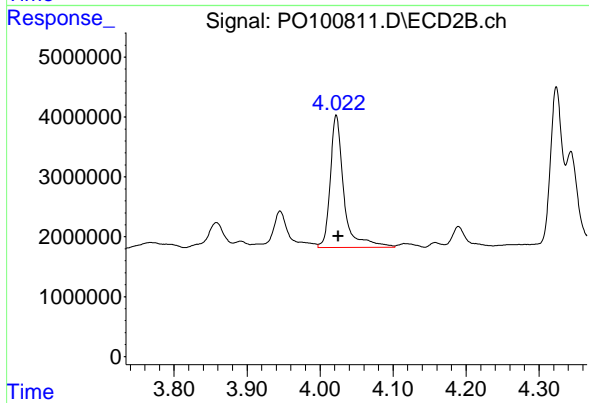
#9 AR-1221-2

R.T.: 3.945 min
 Delta R.T.: -0.003 min
 Response: 9635830
 Conc: 501.80 ng/ml



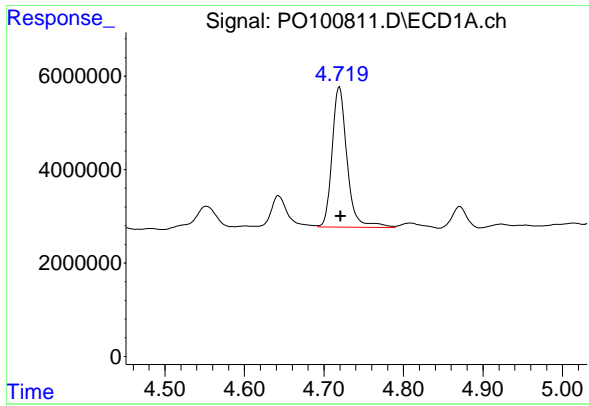
#10 AR-1221-3

R.T.: 4.719 min
 Delta R.T.: -0.002 min
 Response: 39418735
 Conc: 472.30 ng/ml



#10 AR-1221-3

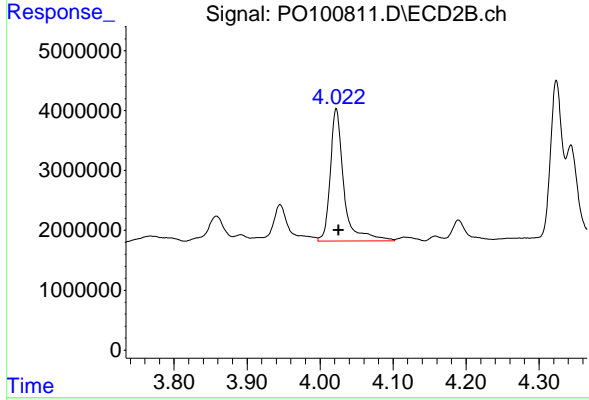
R.T.: 4.022 min
 Delta R.T.: -0.003 min
 Response: 28547907
 Conc: 485.11 ng/ml



#11 AR-1232-1

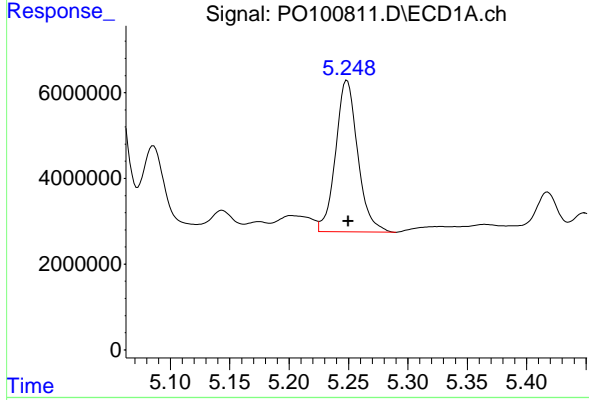
R.T.: 4.719 min
 Delta R.T.: -0.001 min
 Response: 39418735
 Conc: 591.26 ng/ml

Instrument :
 ECD_O
 ClientSampleId :



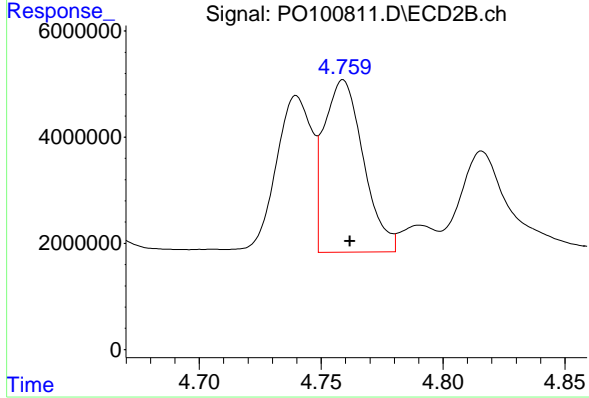
#11 AR-1232-1

R.T.: 4.022 min
 Delta R.T.: -0.003 min
 Response: 28547907
 Conc: 603.77 ng/ml



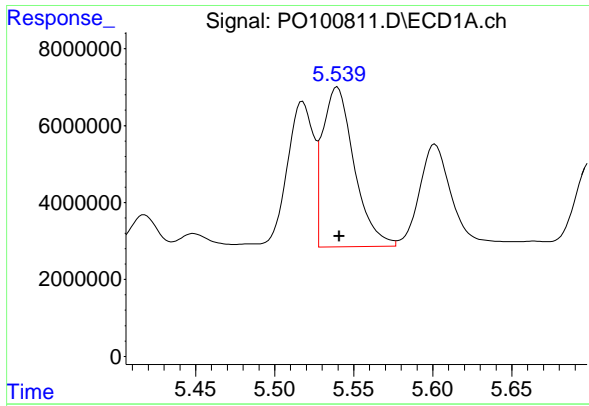
#12 AR-1232-2

R.T.: 5.249 min
 Delta R.T.: -0.001 min
 Response: 45807927
 Conc: 1306.60 ng/ml



#12 AR-1232-2

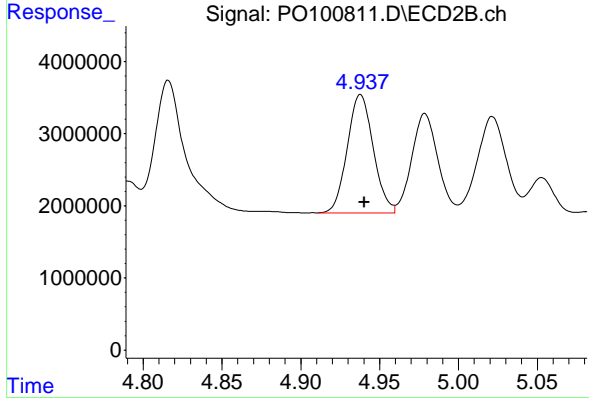
R.T.: 4.759 min
 Delta R.T.: -0.003 min
 Response: 36554518
 Conc: 876.40 ng/ml



#13 AR-1232-3

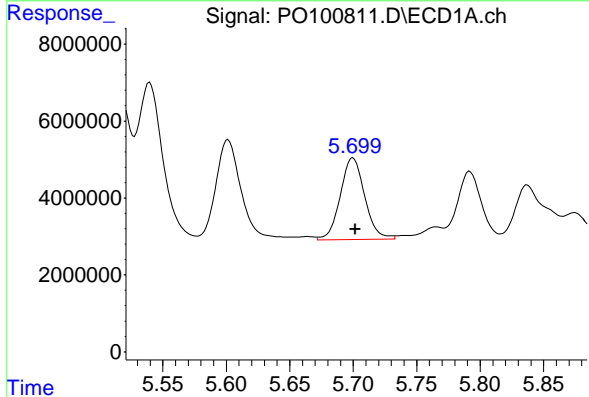
R.T.: 5.540 min
 Delta R.T.: -0.001 min
 Response: 58009166
 Conc: 972.23 ng/ml

Instrument :
 ECD_O
 ClientSampleId :



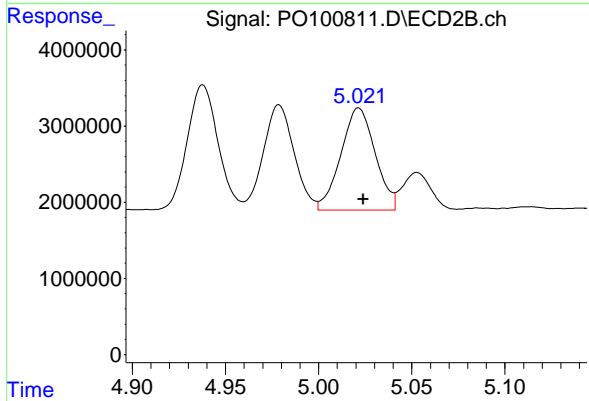
#13 AR-1232-3

R.T.: 4.938 min
 Delta R.T.: -0.002 min
 Response: 18859192
 Conc: 879.07 ng/ml



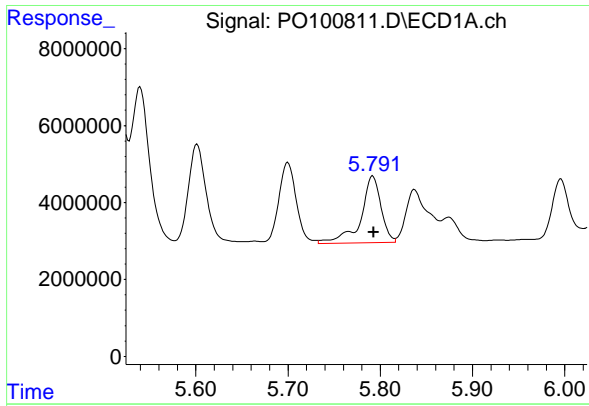
#14 AR-1232-4

R.T.: 5.700 min
 Delta R.T.: -0.002 min
 Response: 28562868
 Conc: 1041.70 ng/ml



#14 AR-1232-4

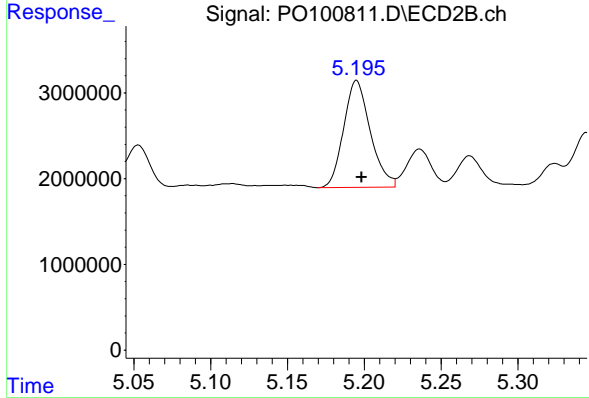
R.T.: 5.021 min
 Delta R.T.: -0.002 min
 Response: 17171360
 Conc: 808.18 ng/ml



#15 AR-1232-5

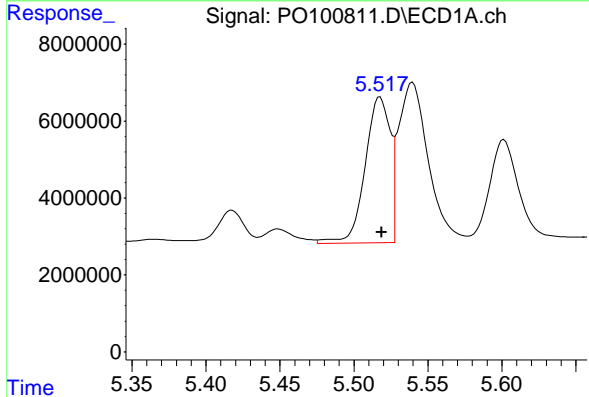
R.T.: 5.792 min
 Delta R.T.: -0.001 min
 Response: 26428029
 Conc: 1099.20 ng/ml

Instrument :
 ECD_O
 ClientSampleId :



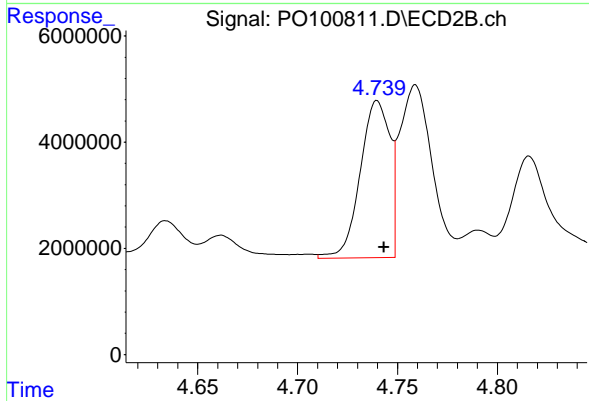
#15 AR-1232-5

R.T.: 5.195 min
 Delta R.T.: -0.003 min
 Response: 15022223
 Conc: 687.40 ng/ml



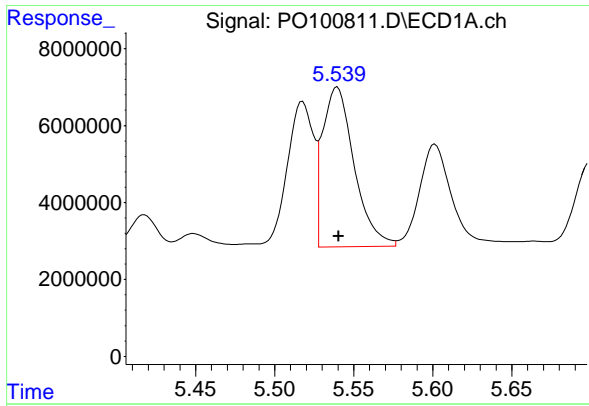
#16 AR-1242-1

R.T.: 5.518 min
 Delta R.T.: 0.000 min
 Response: 44691727
 Conc: 633.65 ng/ml



#16 AR-1242-1

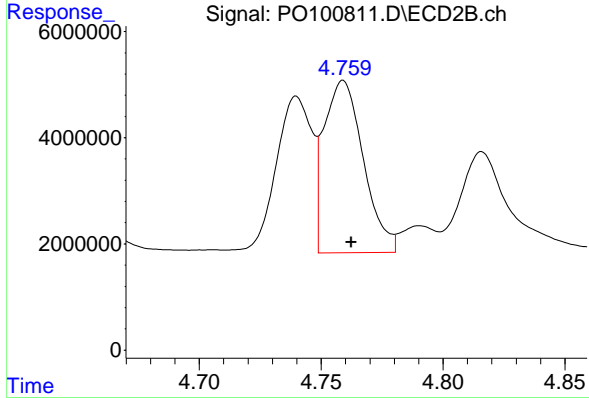
R.T.: 4.740 min
 Delta R.T.: -0.003 min
 Response: 30526178
 Conc: 584.48 ng/ml



#17 AR-1242-2

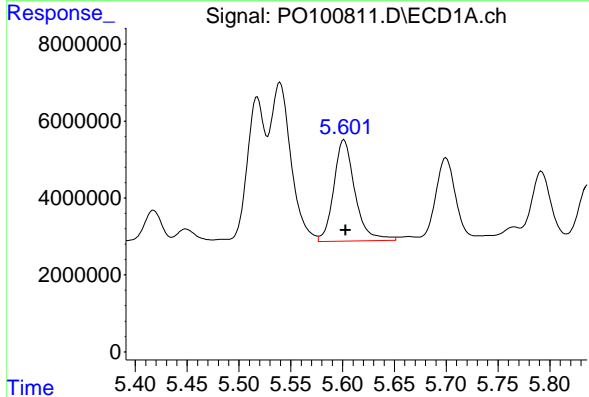
R.T.: 5.540 min
 Delta R.T.: -0.000 min
 Response: 58009166
 Conc: 552.67 ng/ml

Instrument :
 ECD_O
 ClientSampleId :



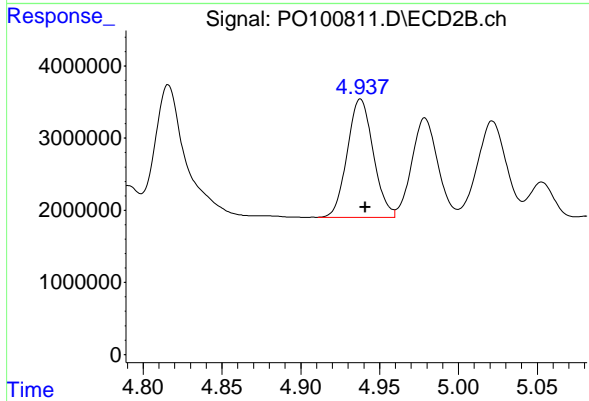
#17 AR-1242-2

R.T.: 4.759 min
 Delta R.T.: -0.003 min
 Response: 36554518
 Conc: 504.38 ng/ml



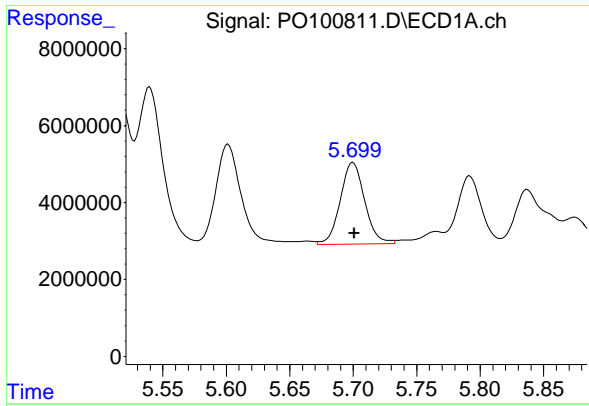
#18 AR-1242-3

R.T.: 5.601 min
 Delta R.T.: -0.002 min
 Response: 37621024
 Conc: 578.74 ng/ml



#18 AR-1242-3

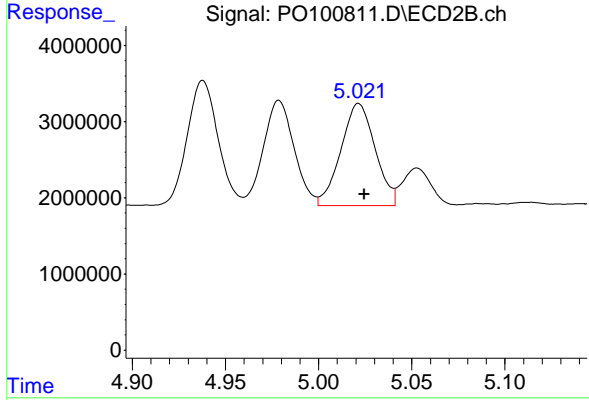
R.T.: 4.938 min
 Delta R.T.: -0.003 min
 Response: 18859192
 Conc: 492.20 ng/ml



#19 AR-1242-4

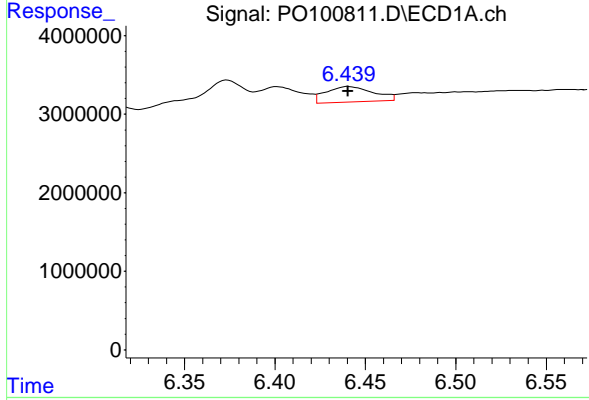
R.T.: 5.700 min
 Delta R.T.: -0.001 min
 Response: 28562868
 Conc: 570.38 ng/ml

Instrument :
 ECD_O
 ClientSampleId :



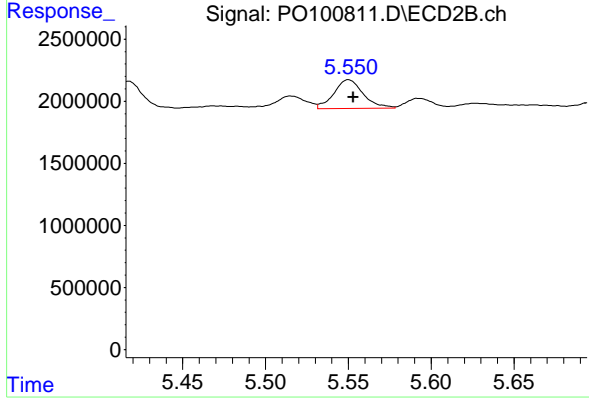
#19 AR-1242-4

R.T.: 5.021 min
 Delta R.T.: -0.003 min
 Response: 17171360
 Conc: 411.97 ng/ml



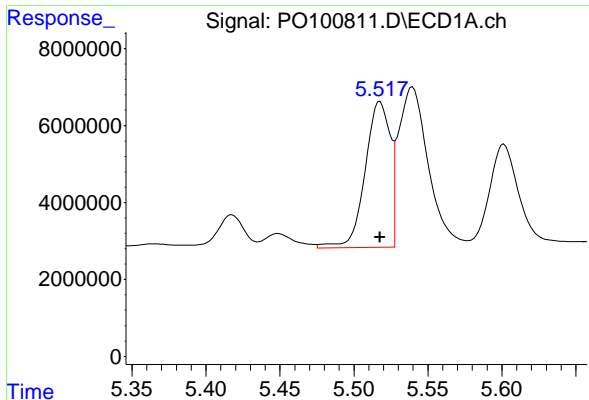
#20 AR-1242-5

R.T.: 6.441 min
 Delta R.T.: 0.000 min
 Response: 3565633
 Conc: 68.89 ng/ml



#20 AR-1242-5

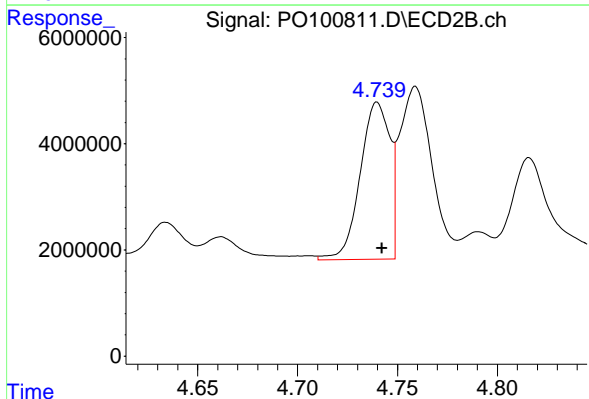
R.T.: 5.550 min
 Delta R.T.: -0.003 min
 Response: 2836203
 Conc: 61.80 ng/ml



#21 AR-1248-1

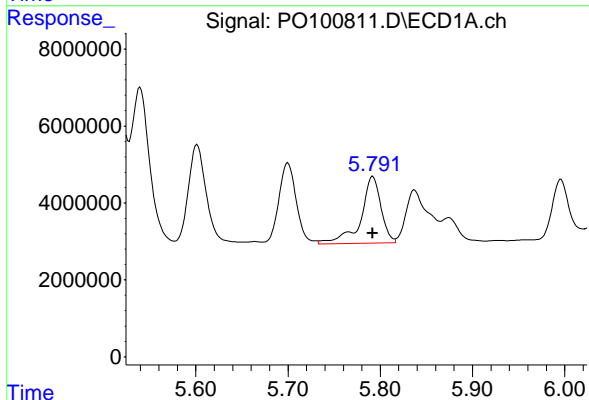
R.T.: 5.518 min
 Delta R.T.: 0.000 min
 Response: 44691727
 Conc: 814.65 ng/ml

Instrument :
 ECD_O
 ClientSampleId :



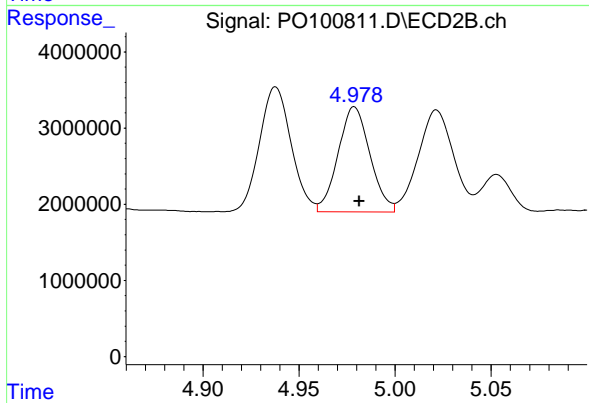
#21 AR-1248-1

R.T.: 4.740 min
 Delta R.T.: -0.003 min
 Response: 30526178
 Conc: 763.37 ng/ml



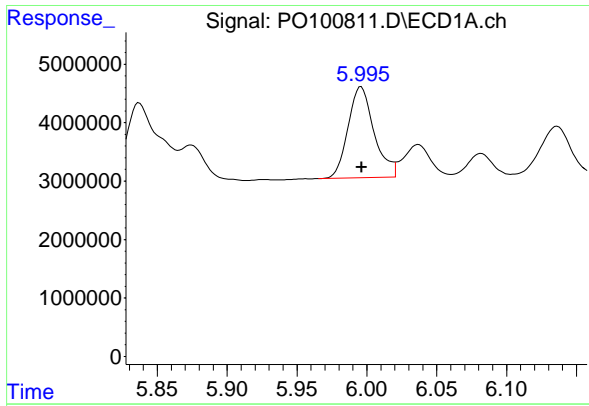
#22 AR-1248-2

R.T.: 5.792 min
 Delta R.T.: 0.000 min
 Response: 26428029
 Conc: 306.00 ng/ml



#22 AR-1248-2

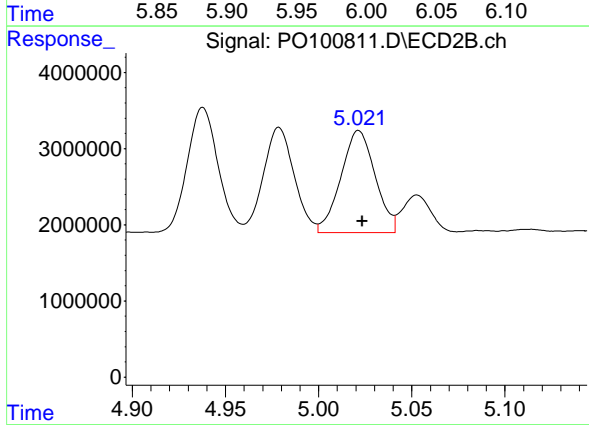
R.T.: 4.979 min
 Delta R.T.: -0.003 min
 Response: 15880357
 Conc: 263.96 ng/ml



#23 AR-1248-3

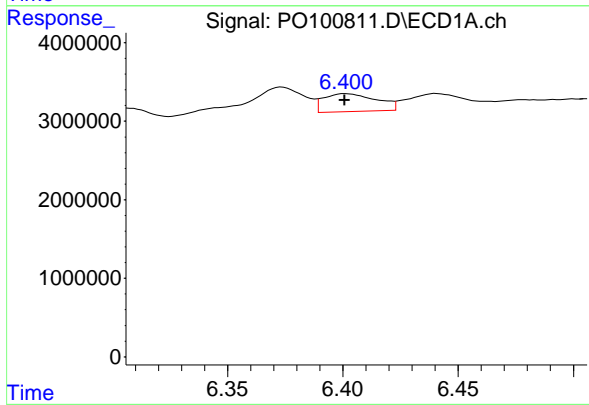
R.T.: 5.996 min
 Delta R.T.: 0.000 min
 Response: 20171954
 Conc: 229.82 ng/ml

Instrument :
 ECD_O
 ClientSampleId :



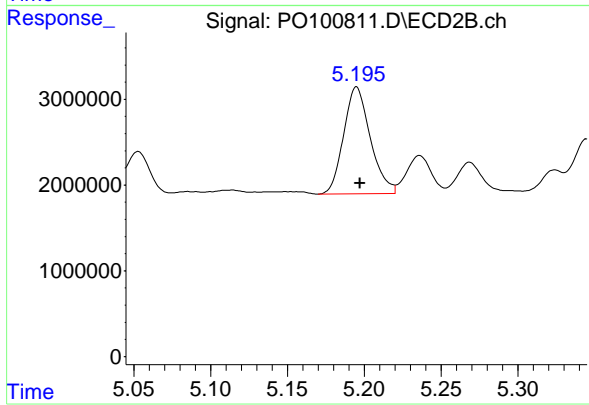
#23 AR-1248-3

R.T.: 5.021 min
 Delta R.T.: -0.002 min
 Response: 17171360
 Conc: 274.70 ng/ml



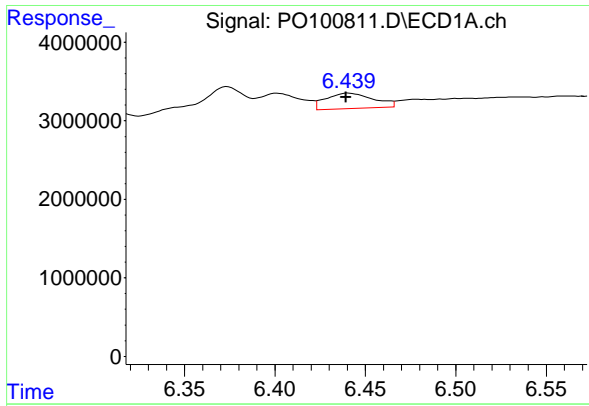
#24 AR-1248-4

R.T.: 6.401 min
 Delta R.T.: 0.000 min
 Response: 3595427
 Conc: 39.99 ng/ml



#24 AR-1248-4

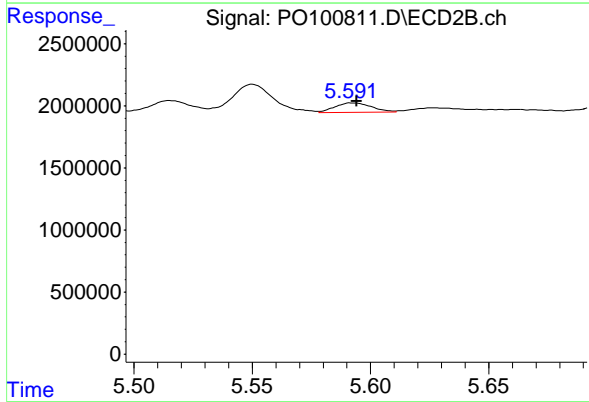
R.T.: 5.195 min
 Delta R.T.: -0.002 min
 Response: 15022223
 Conc: 208.55 ng/ml



#25 AR-1248-5

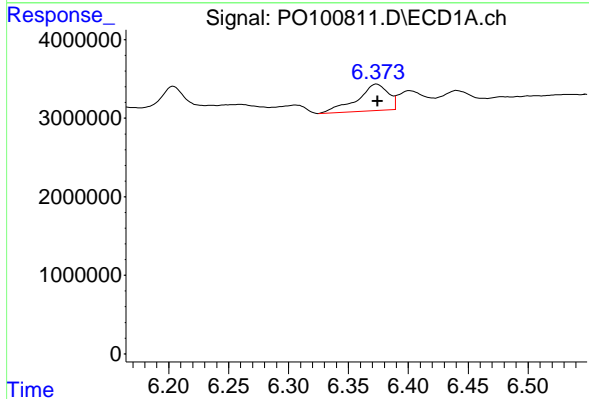
R.T.: 6.441 min
 Delta R.T.: 0.002 min
 Response: 3565633
 Conc: 39.72 ng/ml

Instrument :
 ECD_O
 ClientSampleId :



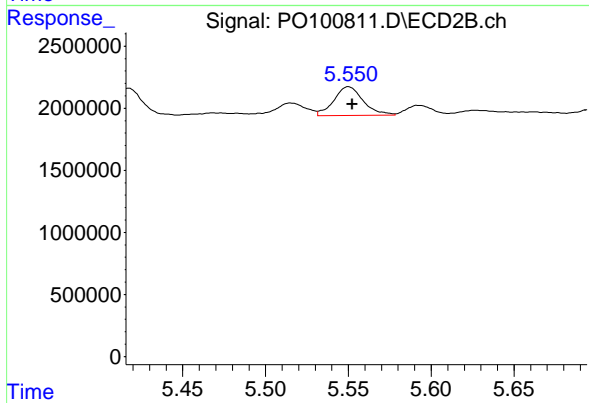
#25 AR-1248-5

R.T.: 5.593 min
 Delta R.T.: -0.001 min
 Response: 812099
 Conc: 13.16 ng/ml



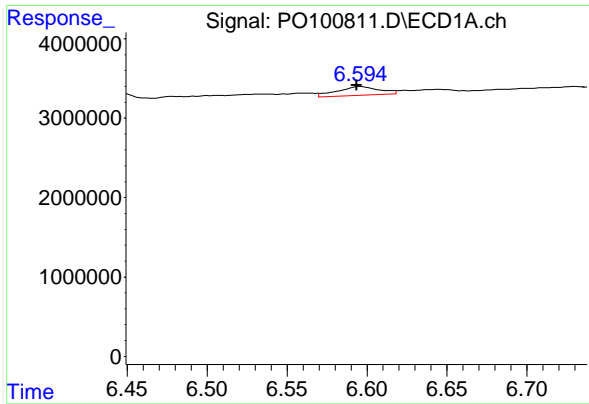
#26 AR-1254-1

R.T.: 6.374 min
 Delta R.T.: 0.000 min
 Response: 6091338
 Conc: 57.95 ng/ml



#26 AR-1254-1

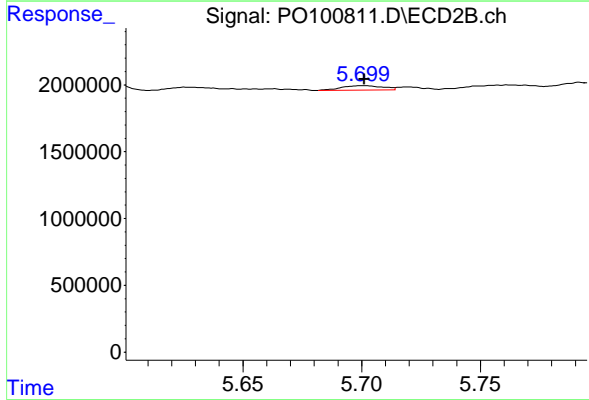
R.T.: 5.550 min
 Delta R.T.: -0.002 min
 Response: 2836203
 Conc: 27.64 ng/ml



#27 AR-1254-2

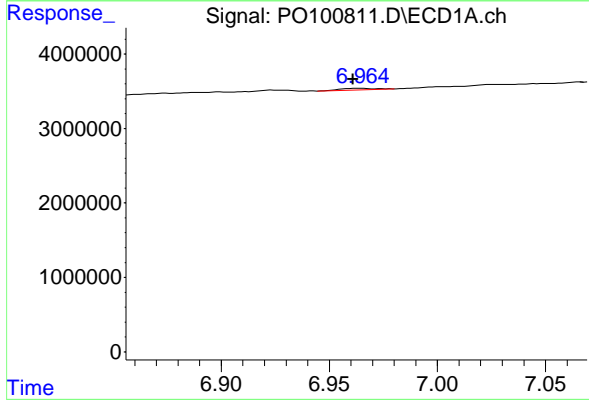
R.T.: 6.596 min
 Delta R.T.: 0.002 min
 Response: 2051881
 Conc: 13.90 ng/ml

Instrument : ECD_O
 ClientSampleId :



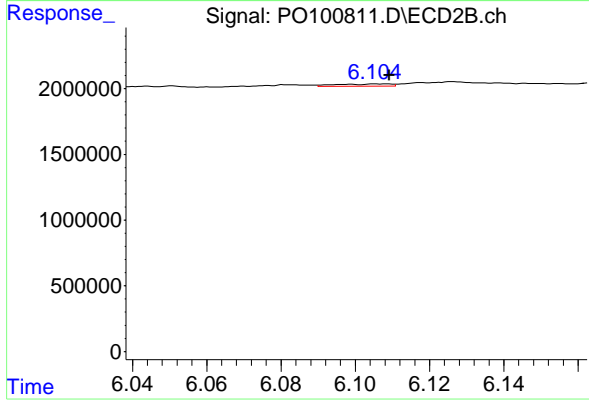
#27 AR-1254-2

R.T.: 5.701 min
 Delta R.T.: 0.000 min
 Response: 397240
 Conc: 4.32 ng/ml



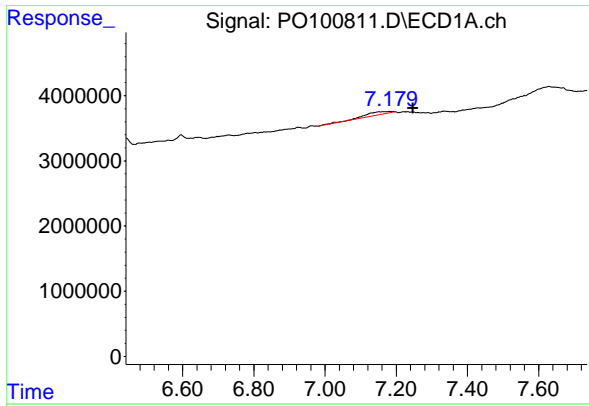
#28 AR-1254-3

R.T.: 6.964 min
 Delta R.T.: 0.003 min
 Response: 227519
 Conc: 1.62 ng/ml



#28 AR-1254-3

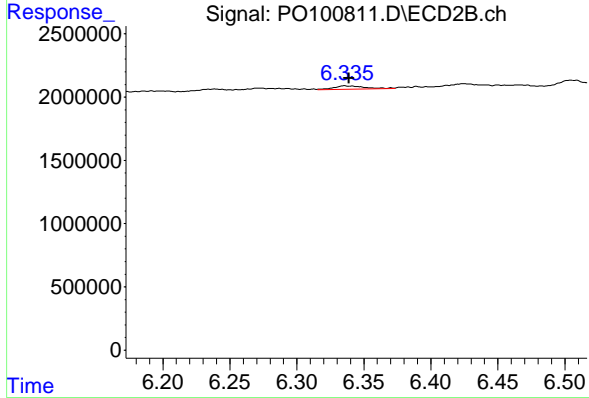
R.T.: 6.106 min
 Delta R.T.: -0.003 min
 Response: 179059
 Conc: 1.32 ng/ml



#29 AR-1254-4

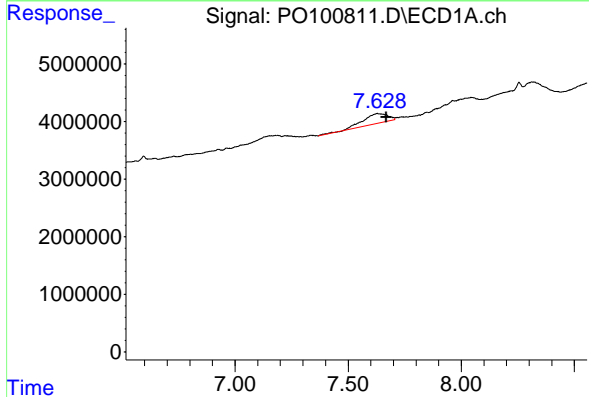
R.T.: 7.188 min
 Delta R.T.: -0.059 min
 Response: 2423547
 Conc: 28.51 ng/ml

Instrument :
 ECD_O
 ClientSampleId :



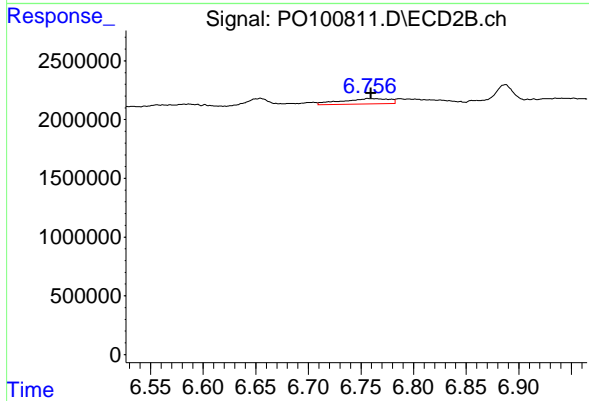
#29 AR-1254-4

R.T.: 6.336 min
 Delta R.T.: -0.003 min
 Response: 441380
 Conc: 6.12 ng/ml



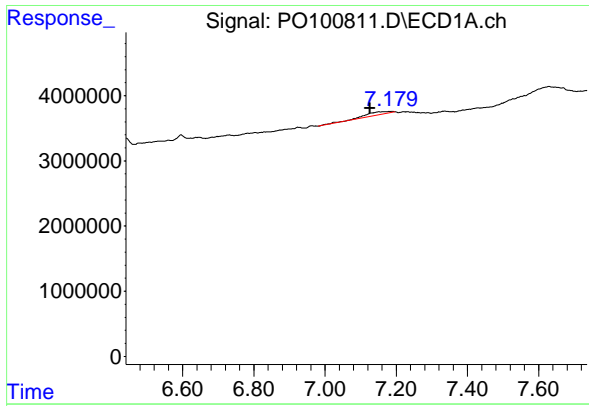
#30 AR-1254-5

R.T.: 7.629 min
 Delta R.T.: -0.039 min
 Response: 13415235
 Conc: 113.37 ng/ml



#30 AR-1254-5

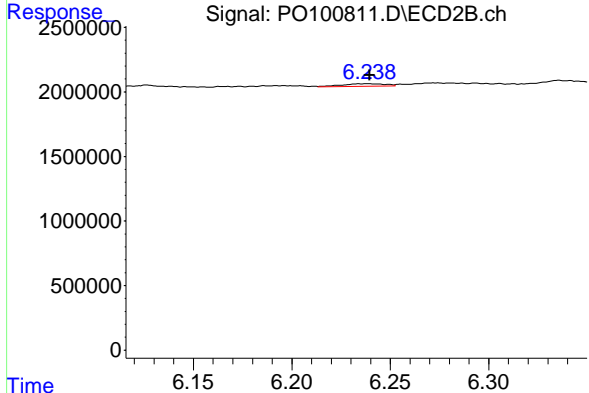
R.T.: 6.757 min
 Delta R.T.: -0.003 min
 Response: 1450524
 Conc: 12.59 ng/ml



#31 AR-1260-1

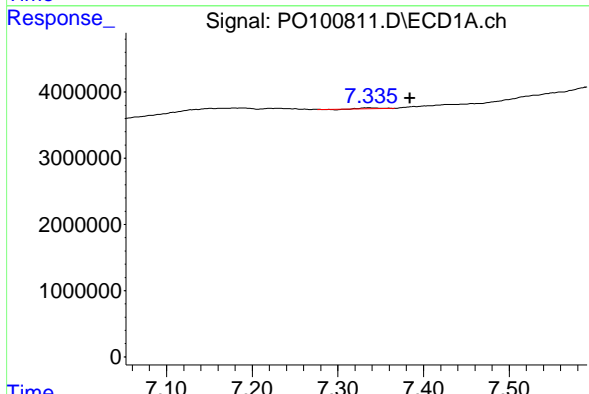
R.T.: 7.188 min
 Delta R.T.: 0.062 min
 Response: 2423547
 Conc: 17.69 ng/ml

Instrument :
 ECD_O
 ClientSampleId :



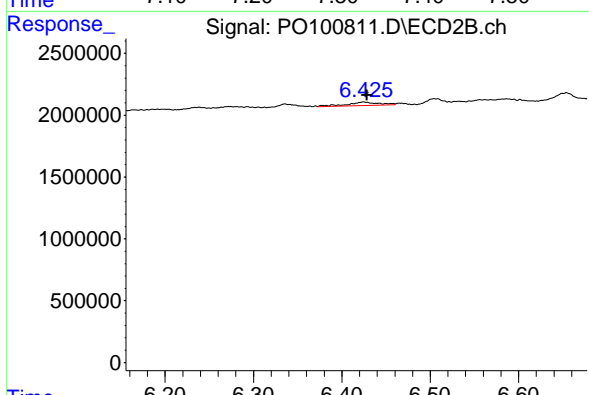
#31 AR-1260-1

R.T.: 6.239 min
 Delta R.T.: 0.000 min
 Response: 317143
 Conc: 3.33 ng/ml



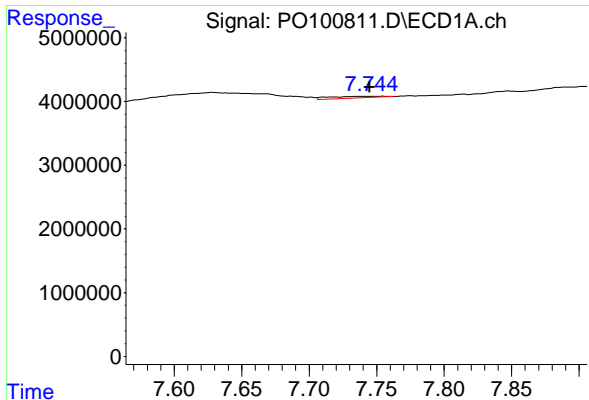
#32 AR-1260-2

R.T.: 7.335 min
 Delta R.T.: -0.049 min
 Response: 145306
 Conc: 1.16 ng/ml



#32 AR-1260-2

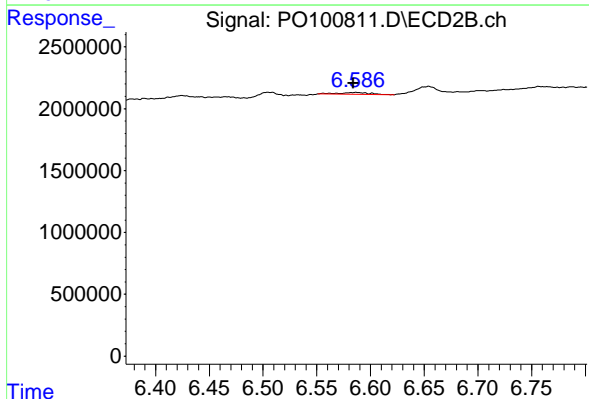
R.T.: 6.425 min
 Delta R.T.: -0.004 min
 Response: 737888
 Conc: 6.87 ng/ml



#33 AR-1260-3

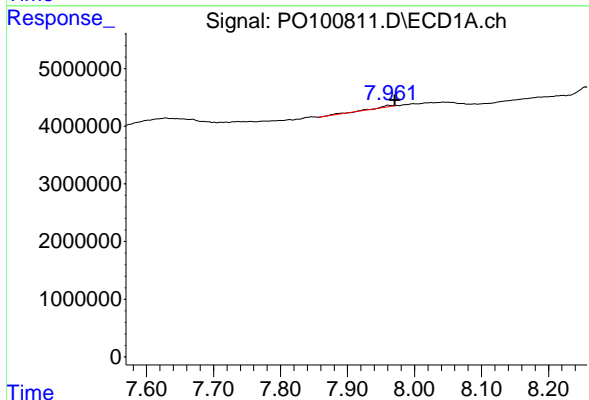
R.T.: 7.755 min
 Delta R.T.: 0.011 min
 Response: 725638
 Conc: 7.49 ng/ml

Instrument :
 ECD_O
 ClientSampleId :



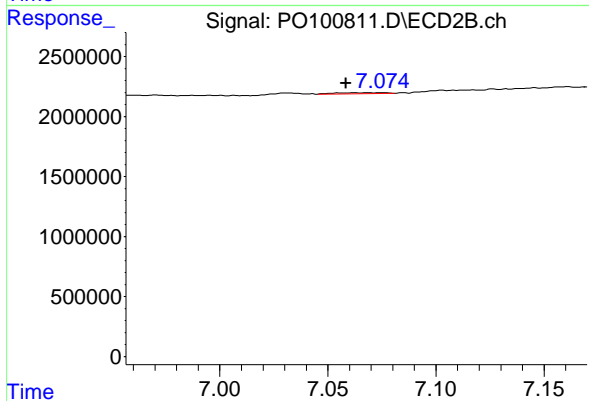
#33 AR-1260-3

R.T.: 6.586 min
 Delta R.T.: 0.003 min
 Response: 296268
 Conc: 2.89 ng/ml



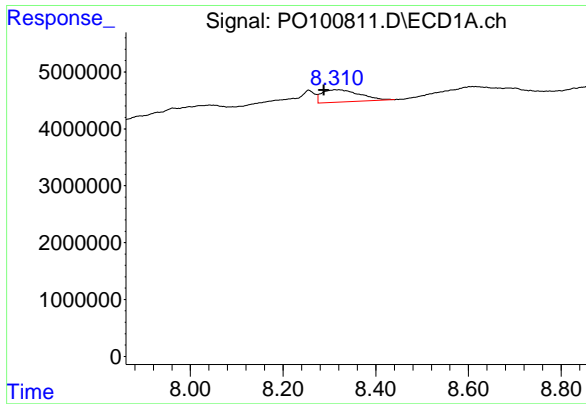
#34 AR-1260-4

R.T.: 7.962 min
 Delta R.T.: -0.008 min
 Response: 331090
 Conc: 3.14 ng/ml



#34 AR-1260-4

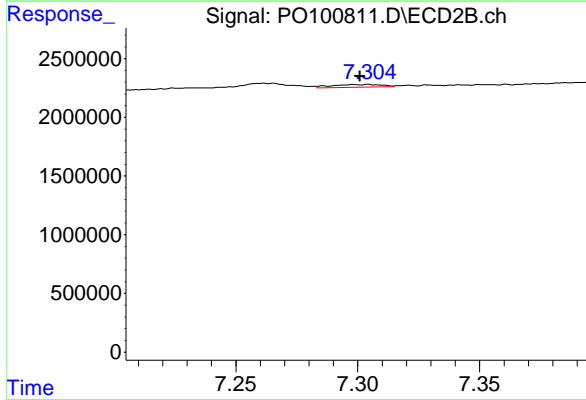
R.T.: 7.075 min
 Delta R.T.: 0.016 min
 Response: 125902
 Conc: 1.54 ng/ml



#35 AR-1260-5

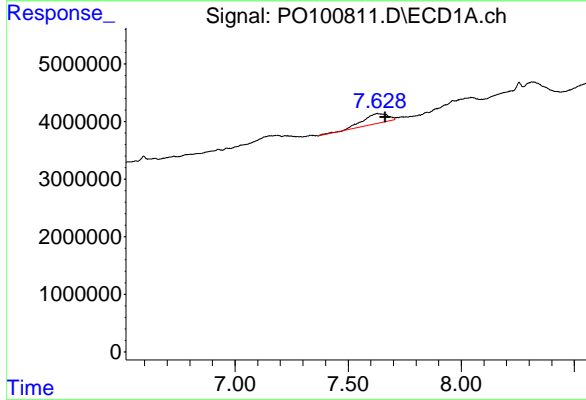
R.T.: 8.312 min
 Delta R.T.: 0.023 min
 Response: 12300245
 Conc: 58.27 ng/ml

Instrument :
 ECD_O
 ClientSampleId :



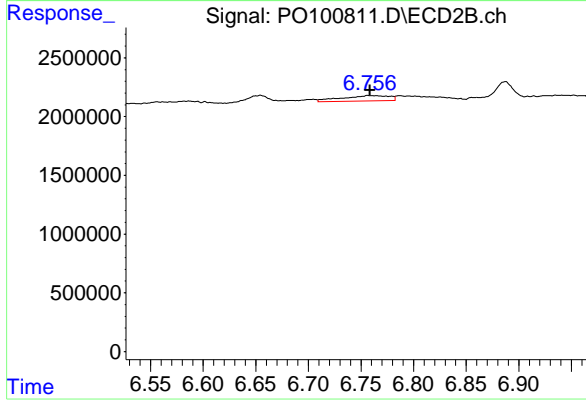
#35 AR-1260-5

R.T.: 7.304 min
 Delta R.T.: 0.003 min
 Response: 328476
 Conc: 1.82 ng/ml



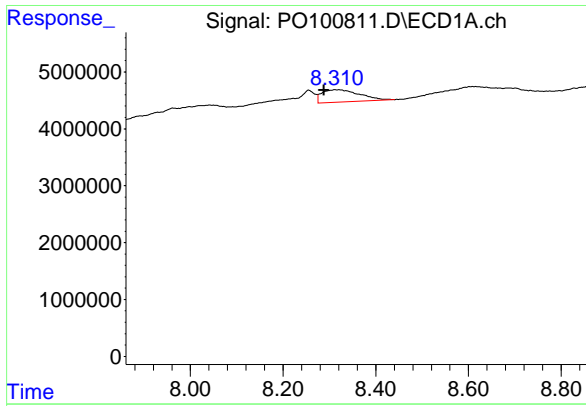
#36 AR-1262-1

R.T.: 7.629 min
 Delta R.T.: -0.035 min
 Response: 13415235
 Conc: 134.29 ng/ml



#36 AR-1262-1

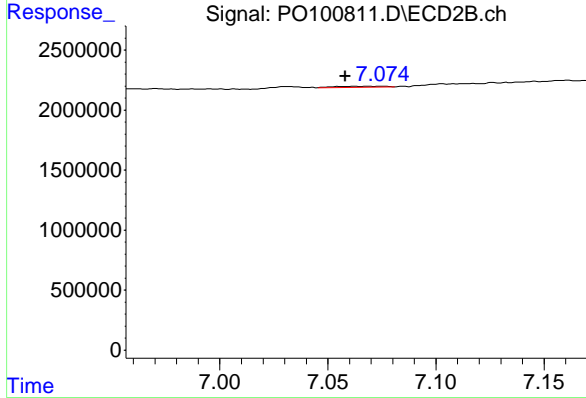
R.T.: 6.757 min
 Delta R.T.: -0.002 min
 Response: 1450524
 Conc: 23.25 ng/ml



#37 AR-1262-2

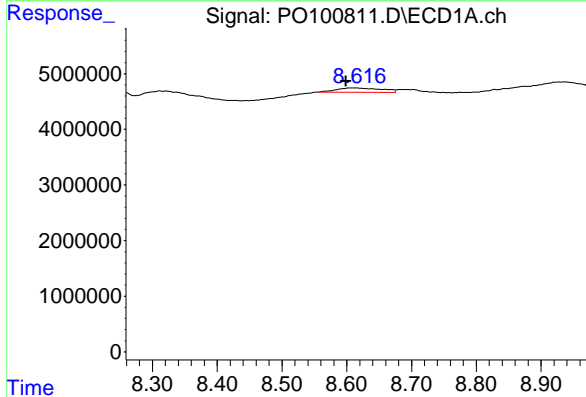
R.T.: 8.312 min
 Delta R.T.: 0.024 min
 Response: 12300245
 Conc: 51.83 ng/ml

Instrument :
 ECD_O
 ClientSampleId :



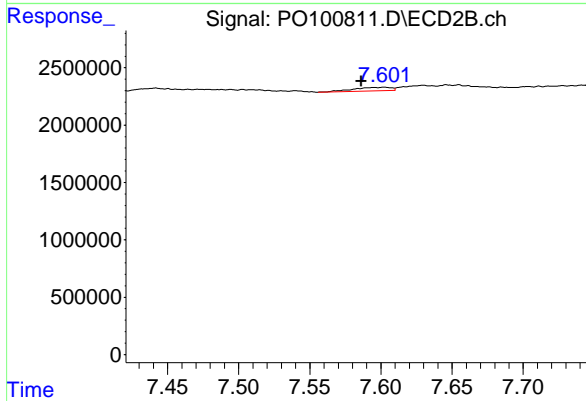
#37 AR-1262-2

R.T.: 7.075 min
 Delta R.T.: 0.017 min
 Response: 125902
 Conc: 1.11 ng/ml



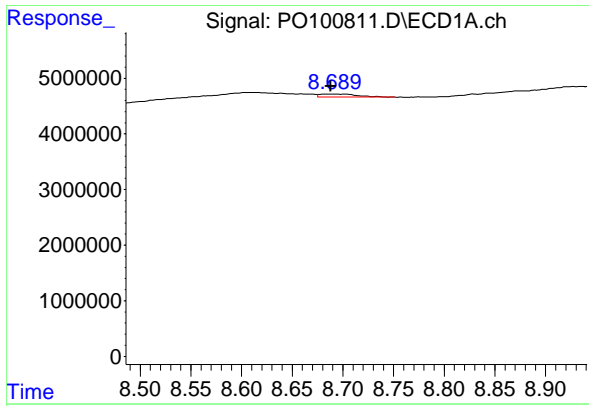
#38 AR-1262-3

R.T.: 8.613 min
 Delta R.T.: 0.014 min
 Response: 3690661
 Conc: 22.73 ng/ml



#38 AR-1262-3

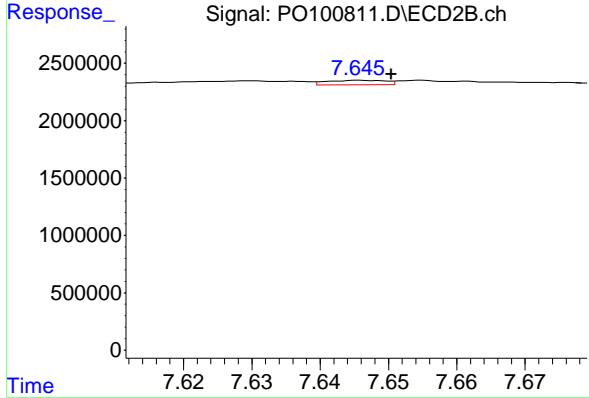
R.T.: 7.602 min
 Delta R.T.: 0.016 min
 Response: 587012
 Conc: 7.62 ng/ml



#39 AR-1262-4

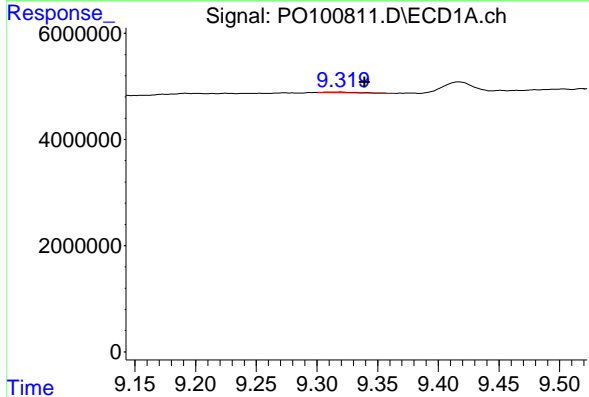
R.T.: 8.690 min
 Delta R.T.: 0.002 min
 Response: 1257301
 Conc: 9.75 ng/ml

Instrument :
 ECD_O
 ClientSampleId :



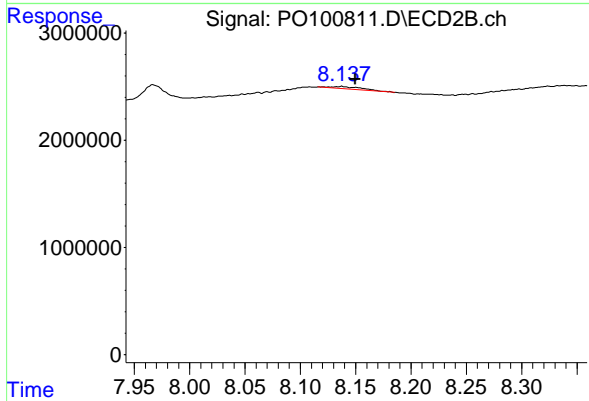
#39 AR-1262-4

R.T.: 7.646 min
 Delta R.T.: -0.004 min
 Response: 233478
 Conc: 1.58 ng/ml



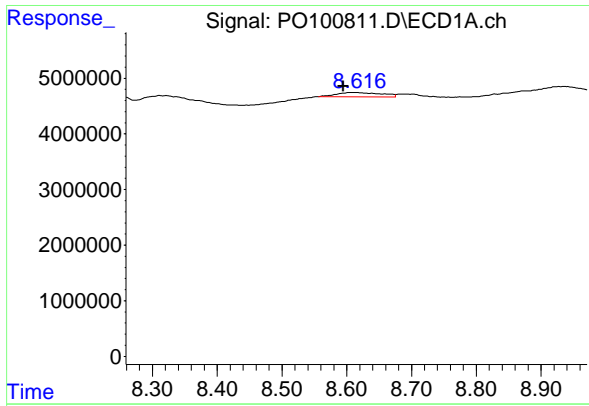
#40 AR-1262-5

R.T.: 9.320 min
 Delta R.T.: -0.020 min
 Response: 234846
 Conc: 2.94 ng/ml



#40 AR-1262-5

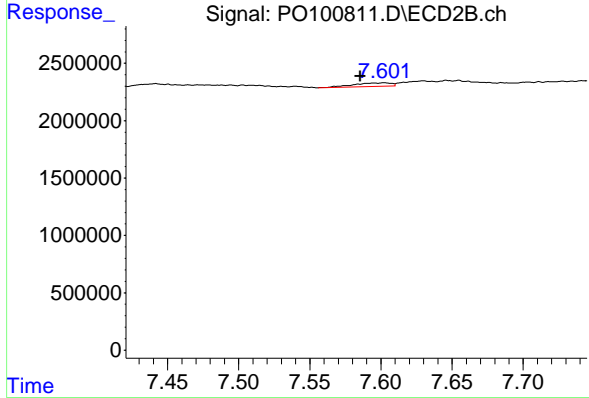
R.T.: 8.137 min
 Delta R.T.: -0.012 min
 Response: 424264
 Conc: 6.63 ng/ml



#41 AR-1268-1

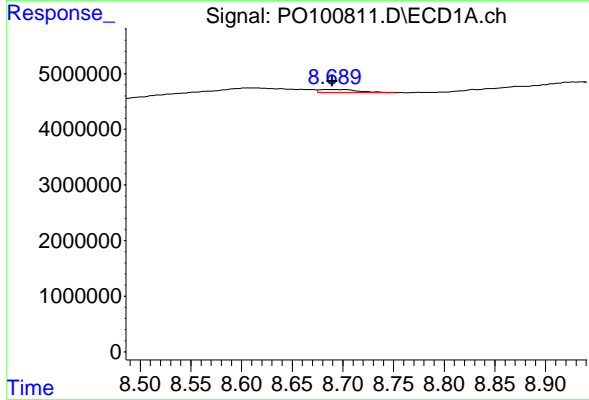
R.T.: 8.613 min
 Delta R.T.: 0.018 min
 Response: 3690661
 Conc: 13.06 ng/ml

Instrument :
 ECD_O
 ClientSampleId :



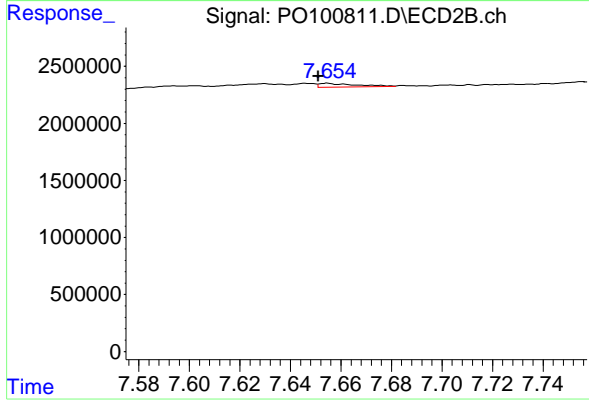
#41 AR-1268-1

R.T.: 7.602 min
 Delta R.T.: 0.017 min
 Response: 587012
 Conc: 2.65 ng/ml



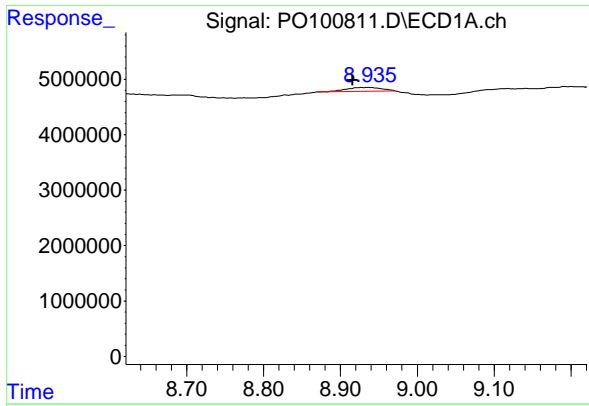
#42 AR-1268-2

R.T.: 8.690 min
 Delta R.T.: 0.000 min
 Response: 1257301
 Conc: 4.98 ng/ml



#42 AR-1268-2

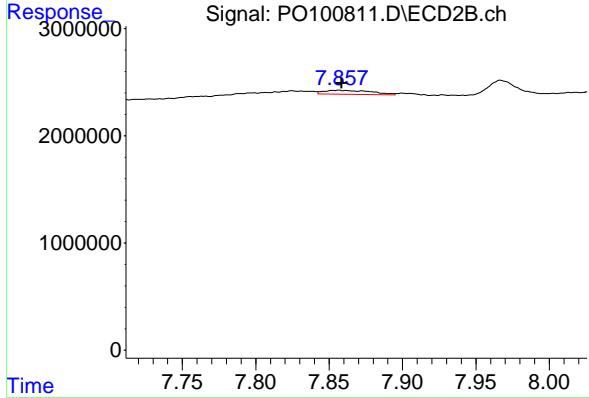
R.T.: 7.655 min
 Delta R.T.: 0.004 min
 Response: 358210
 Conc: 1.77 ng/ml



#43 AR-1268-3

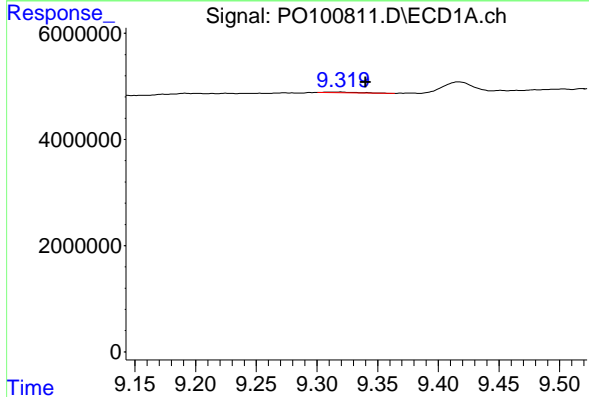
R.T.: 8.936 min
 Delta R.T.: 0.020 min
 Response: 2194468
 Conc: 9.62 ng/ml

Instrument :
 ECD_O
 ClientSampleId :



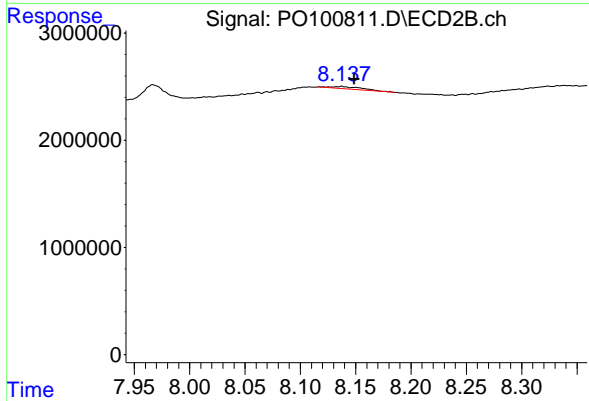
#43 AR-1268-3

R.T.: 7.857 min
 Delta R.T.: -0.002 min
 Response: 819930
 Conc: 4.35 ng/ml



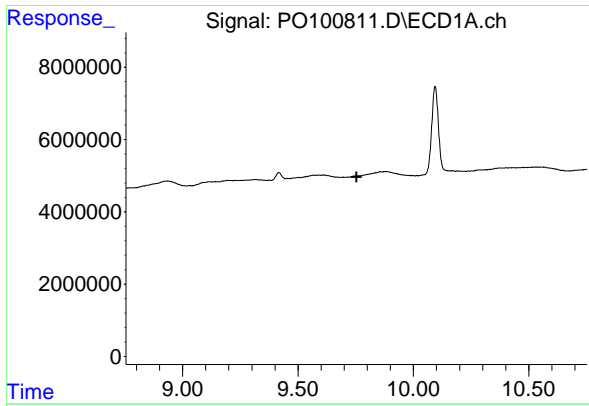
#44 AR-1268-4

R.T.: 9.320 min
 Delta R.T.: -0.021 min
 Response: 234846
 Conc: 3.00 ng/ml



#44 AR-1268-4

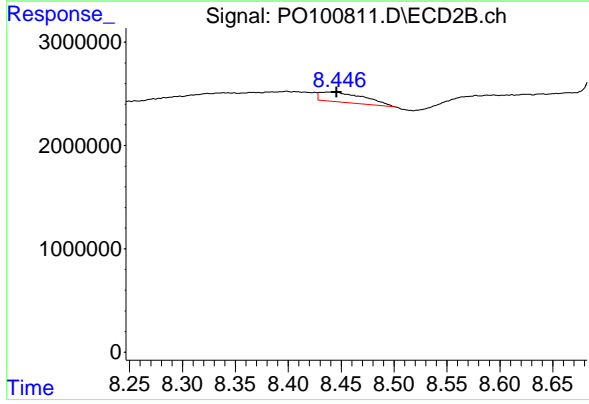
R.T.: 8.137 min
 Delta R.T.: -0.011 min
 Response: 424264
 Conc: 6.32 ng/ml



#45 AR-1268-5

R.T.: 0.000 min
 Exp R.T.: 9.754 min
 Response: 0
 Conc: N.D.

Instrument :
 ECD_O
 ClientSampleId :



#45 AR-1268-5

R.T.: 8.439 min
 Delta R.T.: -0.006 min
 Response: 2764491
 Conc: 5.33 ng/ml