

Data Path : Z:\pestpcbsrv\HPCHEM1\ECD\_0\Data\PO122822\  
 Data File : PO091697.D  
 Signal(s) : Signal #1: ECD1A.ch Signal #2: ECD2B.ch  
 Acq On : 28 Dec 2022 18:46  
 Operator : YP/AJ  
 Sample : N6213-04DL 200X  
 Misc :  
 ALS Vial : 20 Sample Multiplier: 1

Instrument :  
 ECD\_0  
 ClientSampleId :  
 SB-4DL

Integration File signal 1: autoint1.e  
 Integration File signal 2: autoint2.e  
 Quant Time: Dec 29 06:15:06 2022  
 Quant Method : Z:\pestpcbsrv\HPCHEM1\ECD\_0\methods\PO122122.M  
 Quant Title : GC EXTRACTABLES  
 QLast Update : Thu Dec 22 03:53:05 2022  
 Response via : Initial Calibration  
 Integrator: ChemStation

Volume Inj. : 2 µl  
 Signal #1 Phase : ZB-MR1 Signal #2 Phase: ZB-MR2  
 Signal #1 Info : 30Mx0.32mmx 0.50µ Signal #2 Info : 30M x 0.32mm x 0.25µm

Compound	RT#1	RT#2	Resp#1	Resp#2	ng/ml	ng/ml
----------	------	------	--------	--------	-------	-------

System Monitoring Compounds

Target Compounds

16)	L4 AR-1242-1	5.465	4.551	43137403	18458030	594.018	668.488
17)	L4 AR-1242-2	5.487	4.569	58275927	24972472	562.473	644.246
18)	L4 AR-1242-3	5.550	4.744	37071888	12709432	572.293	610.246
19)	L4 AR-1242-4	5.649	4.829	26905077	9432860	539.984	429.171
20)	L4 AR-1242-5	6.390	5.353	12208845	7732856	233.427	289.199

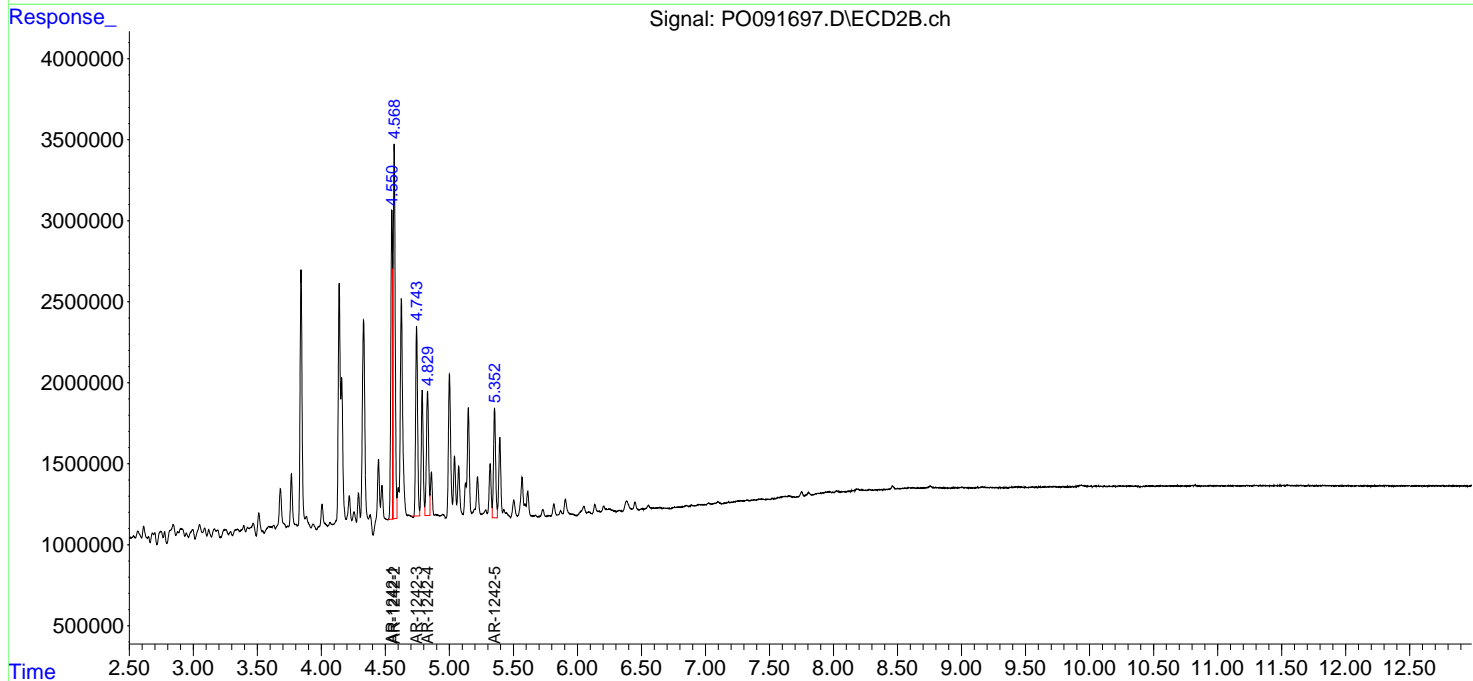
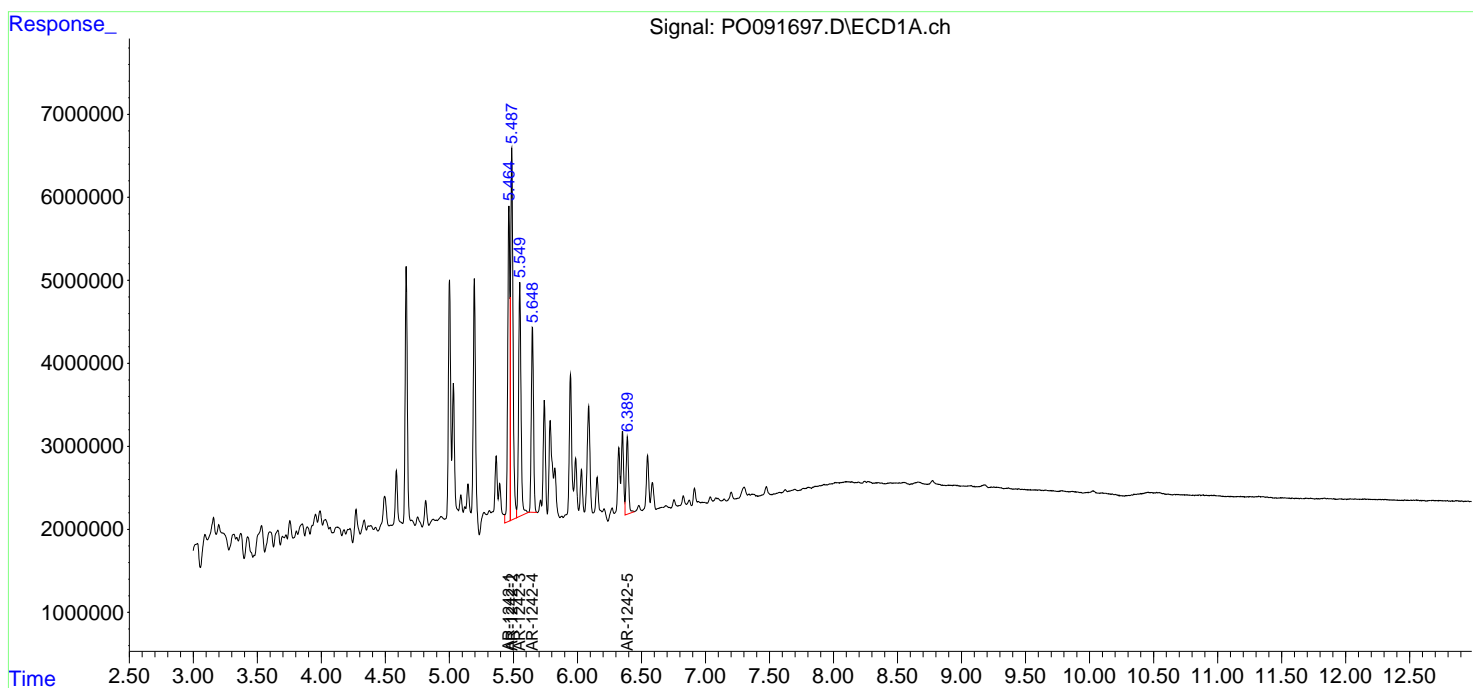
(f)=RT Delta > 1/2 Window (#)=Amounts differ by > 25% (m)=manual int.

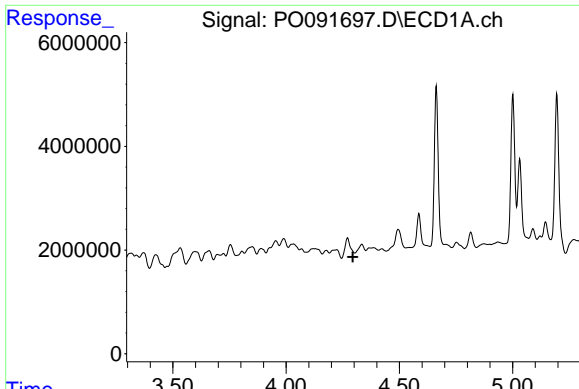
Data Path : Z:\pestpcbsrv\HPCHEM1\ECD\_O\Data\PO122822\  
 Data File : PO091697.D  
 Signal(s) : Signal #1: ECD1A.ch Signal #2: ECD2B.ch  
 Acq On : 28 Dec 2022 18:46  
 Operator : YP/AJ  
 Sample : N6213-04DL 200X  
 Misc :  
 ALS Vial : 20 Sample Multiplier: 1

Instrument :  
 ECD\_O  
 ClientSampleId :  
 SB-4DL

Integration File signal 1: autoint1.e  
 Integration File signal 2: autoint2.e  
 Quant Time: Dec 29 06:15:06 2022  
 Quant Method : Z:\pestpcbsrv\HPCHEM1\ECD\_O\methods\PO122122.M  
 Quant Title : GC EXTRACTABLES  
 QLast Update : Thu Dec 22 03:53:05 2022  
 Response via : Initial Calibration  
 Integrator: ChemStation

Volume Inj. : 2 µl  
 Signal #1 Phase : ZB-MR1 Signal #2 Phase: ZB-MR2  
 Signal #1 Info : 30Mx0.32mmx 0.50µ Signal #2 Info : 30M x 0.32mm x 0.25µm

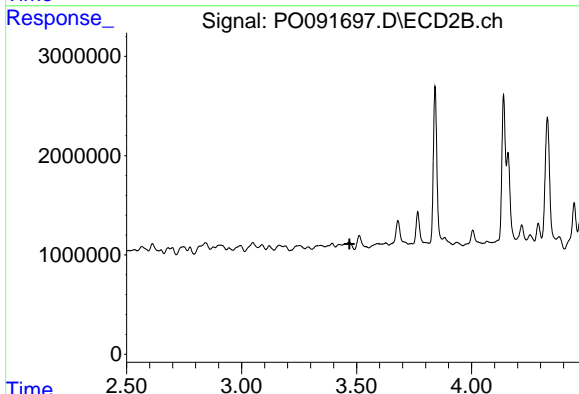




#1 Tetrachloro-m-xylene

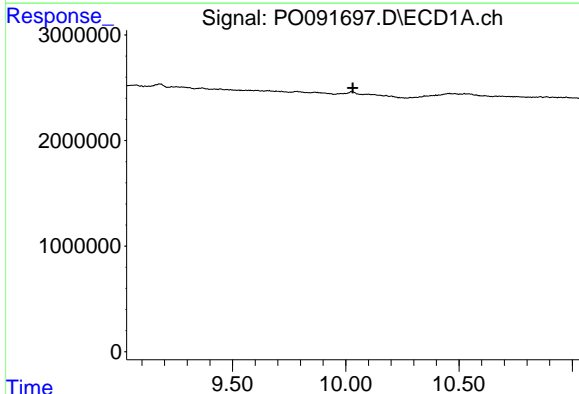
R.T.: 0.000 min  
 Exp R.T. : 4.294 min  
 Response: 0  
 Conc: N.D.

Instrument :  
 ECD\_O  
 ClientSampleId :  
 SB-4DL



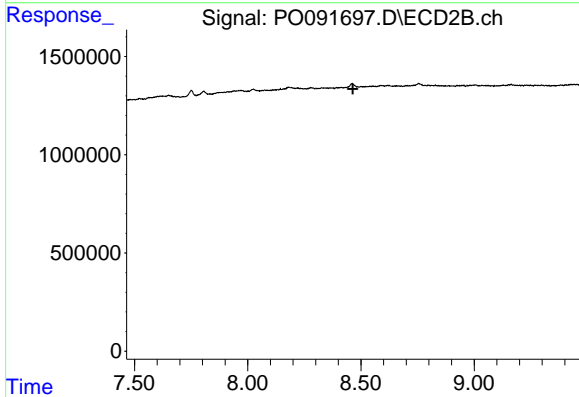
#1 Tetrachloro-m-xylene

R.T.: 0.000 min  
 Exp R.T. : 3.469 min  
 Response: 0  
 Conc: N.D.



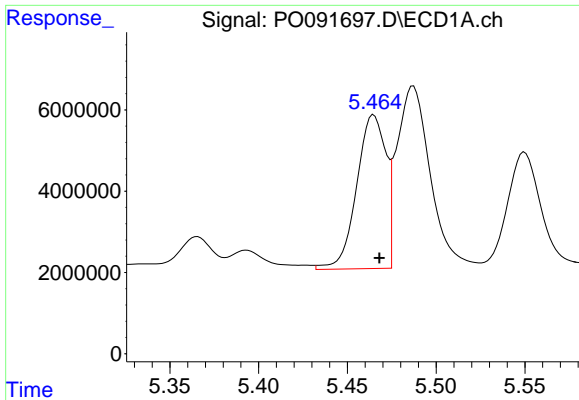
#2 Decachlorobiphenyl

R.T.: 0.000 min  
 Exp R.T. : 10.032 min  
 Response: 0  
 Conc: N.D.



#2 Decachlorobiphenyl

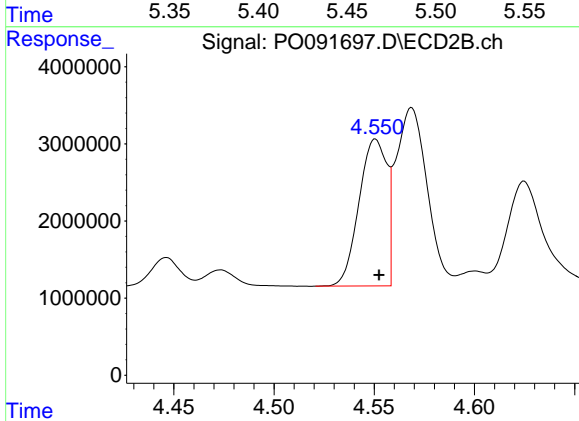
R.T.: 0.000 min  
 Exp R.T. : 8.465 min  
 Response: 0  
 Conc: N.D.



#16 AR-1242-1

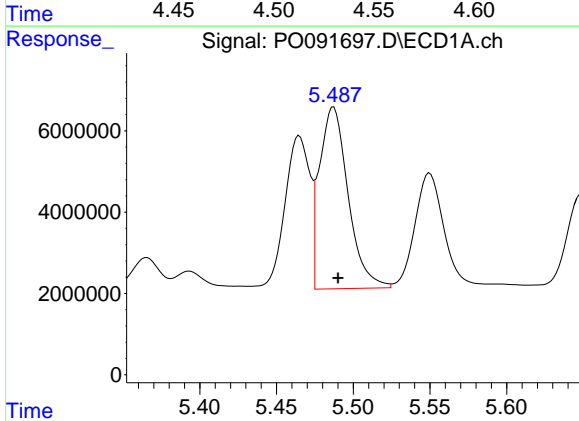
R.T.: 5.465 min  
 Delta R.T.: -0.003 min  
 Response: 43137403  
 Conc: 594.02 ng/ml

Instrument :  
 ECD\_O  
 ClientSampleId :  
 SB-4DL



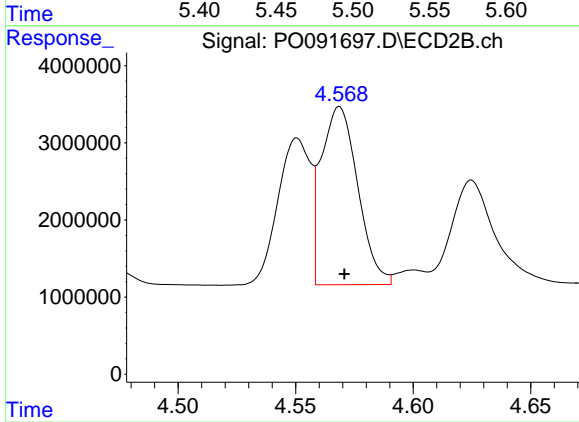
#16 AR-1242-1

R.T.: 4.551 min  
 Delta R.T.: -0.002 min  
 Response: 18458030  
 Conc: 668.49 ng/ml



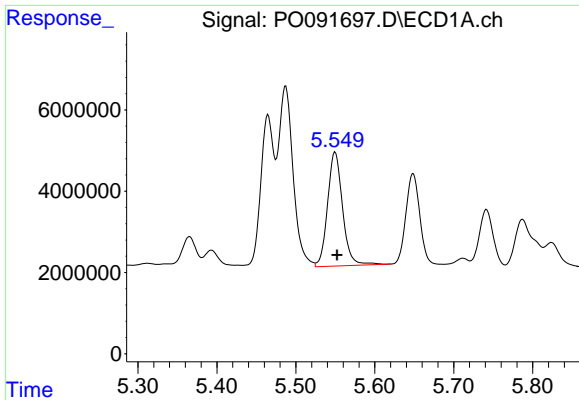
#17 AR-1242-2

R.T.: 5.487 min  
 Delta R.T.: -0.003 min  
 Response: 58275927  
 Conc: 562.47 ng/ml



#17 AR-1242-2

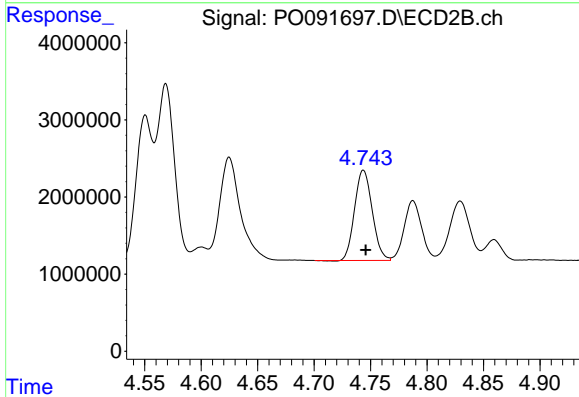
R.T.: 4.569 min  
 Delta R.T.: -0.002 min  
 Response: 24972472  
 Conc: 644.25 ng/ml



#18 AR-1242-3

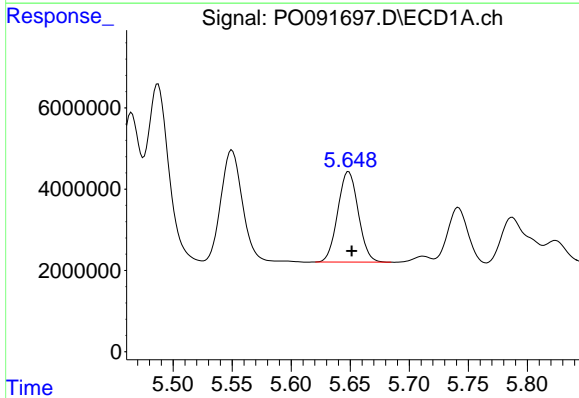
R.T.: 5.550 min  
 Delta R.T.: -0.003 min  
 Response: 37071888  
 Conc: 572.29 ng/ml

Instrument :  
 ECD\_O  
 ClientSampleId :  
 SB-4DL



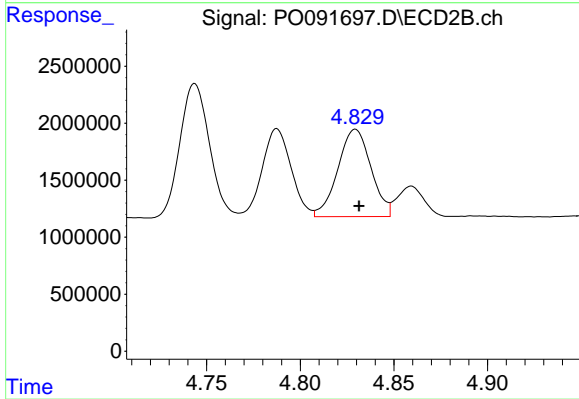
#18 AR-1242-3

R.T.: 4.744 min  
 Delta R.T.: -0.002 min  
 Response: 12709432  
 Conc: 610.25 ng/ml



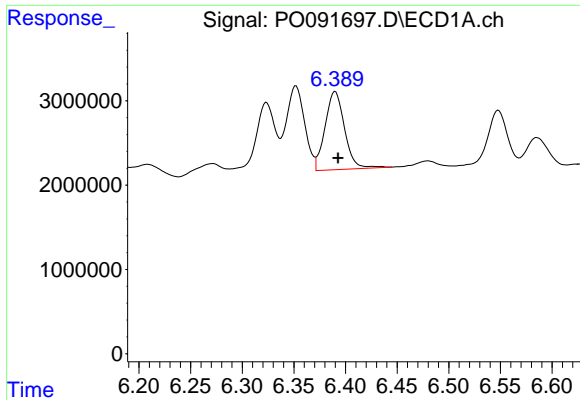
#19 AR-1242-4

R.T.: 5.649 min  
 Delta R.T.: -0.003 min  
 Response: 26905077  
 Conc: 539.98 ng/ml



#19 AR-1242-4

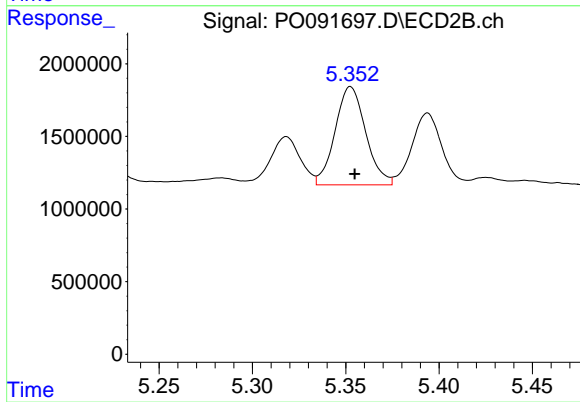
R.T.: 4.829 min  
 Delta R.T.: -0.002 min  
 Response: 9432860  
 Conc: 429.17 ng/ml



#20 AR-1242-5

R.T.: 6.390 min  
Delta R.T.: -0.003 min  
Response: 12208845  
Conc: 233.43 ng/ml

Instrument :  
ECD\_O  
ClientSampleId :  
SB-4DL



#20 AR-1242-5

R.T.: 5.353 min  
Delta R.T.: -0.002 min  
Response: 7732856  
Conc: 289.20 ng/ml