

Data Path : Z:\pestpcbsrv\HPCHEM1\ECD_0\Data\PO122822\
 Data File : PO091716.D
 Signal(s) : Signal #1: ECD1A.ch Signal #2: ECD2B.ch
 Acq On : 29 Dec 2022 01:18
 Operator : YP/AJ
 Sample : N6214-10 10X
 Misc :
 ALS Vial : 34 Sample Multiplier: 1

Instrument :
 ECD_0
 ClientSampleId :
 ECA285D-1-2

Integration File signal 1: autoint1.e
 Integration File signal 2: autoint2.e
 Quant Time: Dec 29 02:13:58 2022
 Quant Method : Z:\pestpcbsrv\HPCHEM1\ECD_0\methods\PO122122.M
 Quant Title : GC EXTRACTABLES
 QLast Update : Thu Dec 22 03:53:05 2022
 Response via : Initial Calibration
 Integrator: ChemStation

Volume Inj. : 2 µl
 Signal #1 Phase : ZB-MR1 Signal #2 Phase: ZB-MR2
 Signal #1 Info : 30Mx0.32mmx 0.50µ Signal #2 Info : 30M x 0.32mm x 0.25µm

Compound	RT#1	RT#2	Resp#1	Resp#2	ng/ml	ng/ml

System Monitoring Compounds						
1) SA Tetrachlo...	4.288	3.466	5600591	2759349	2.061	2.721 #
2) SA Decachlor...	10.028	8.460	4990638	2515032	2.652	2.883

Target Compounds

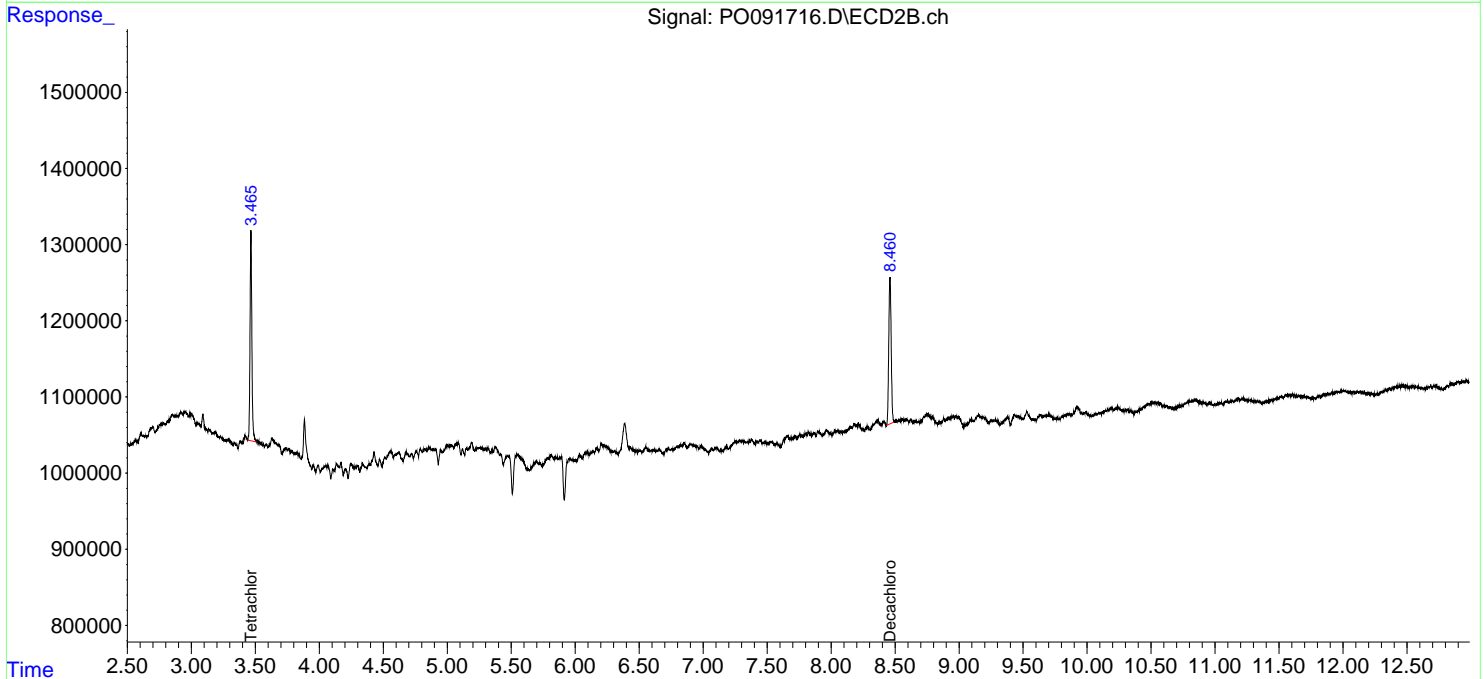
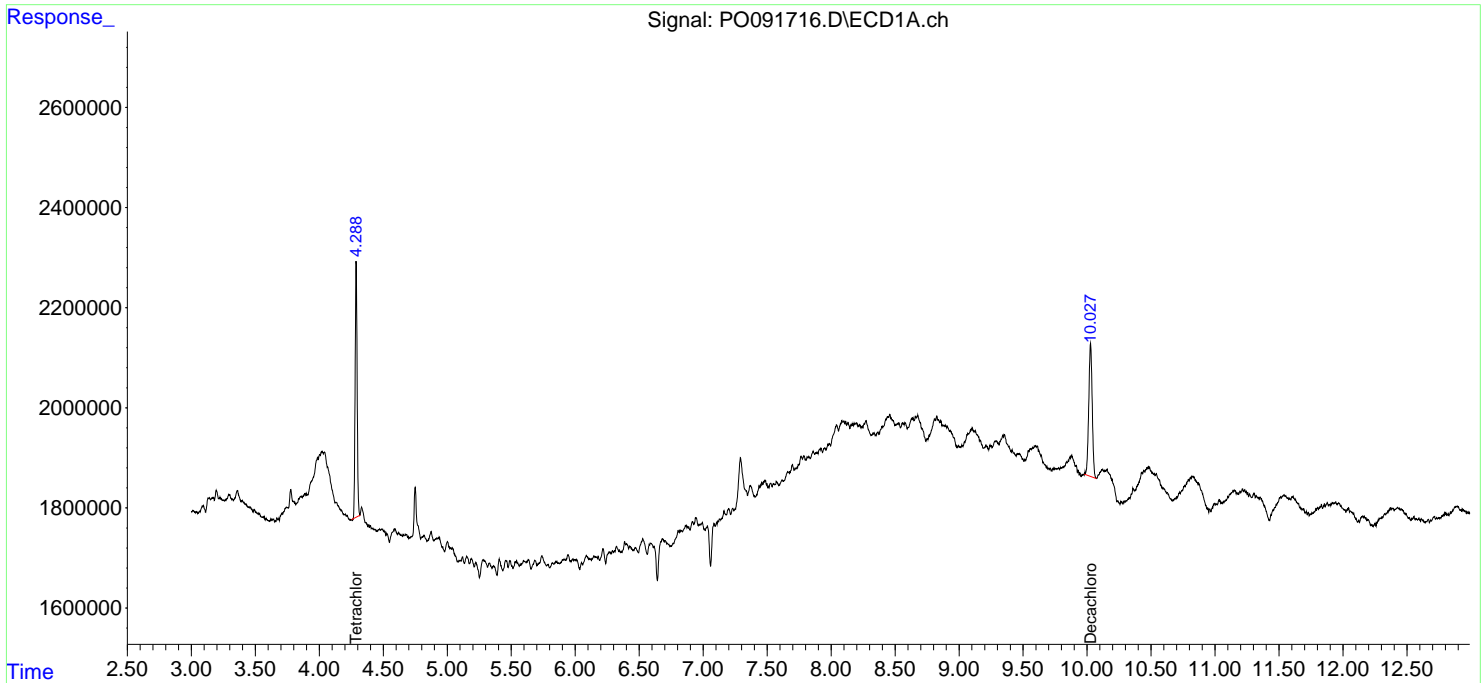
(f)=RT Delta > 1/2 Window (#)=Amounts differ by > 25% (m)=manual int.

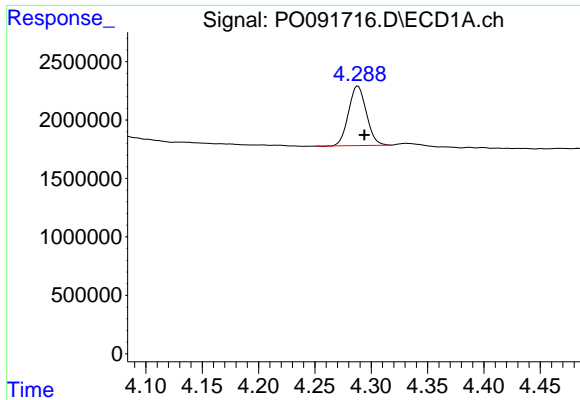
Data Path : Z:\pestpcbsrv\HPCHEM1\ECD_O\Data\PO122822\
 Data File : PO091716.D
 Signal(s) : Signal #1: ECD1A.ch Signal #2: ECD2B.ch
 Acq On : 29 Dec 2022 01:18
 Operator : YP/AJ
 Sample : N6214-10 10X
 Misc :
 ALS Vial : 34 Sample Multiplier: 1

Instrument :
 ECD_O
 ClientSampleId :
 ECA285D-1-2

Integration File signal 1: autoint1.e
 Integration File signal 2: autoint2.e
 Quant Time: Dec 29 02:13:58 2022
 Quant Method : Z:\pestpcbsrv\HPCHEM1\ECD_O\methods\PO122122.M
 Quant Title : GC EXTRACTABLES
 QLast Update : Thu Dec 22 03:53:05 2022
 Response via : Initial Calibration
 Integrator: ChemStation

Volume Inj. : 2 µl
 Signal #1 Phase : ZB-MR1 Signal #2 Phase: ZB-MR2
 Signal #1 Info : 30Mx0.32mmx 0.50µ Signal #2 Info : 30M x 0.32mm x 0.25µm

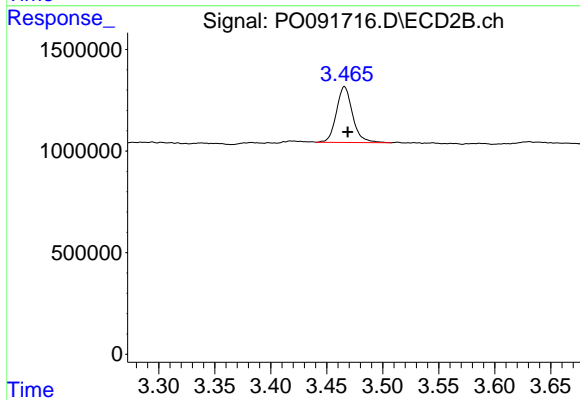




#1 Tetrachloro-m-xylene

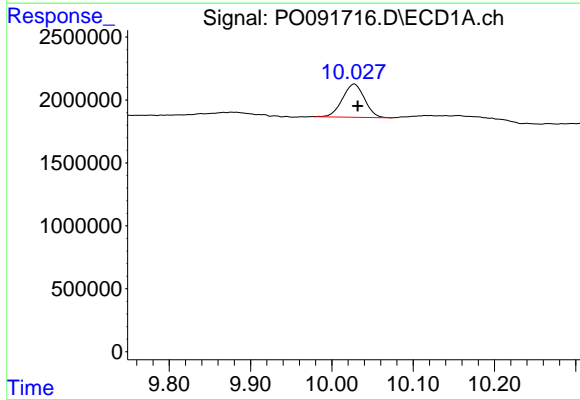
R.T.: 4.288 min
 Delta R.T.: -0.006 min
 Response: 5600591
 Conc: 2.06 ng/ml

Instrument :
 ECD_O
 ClientSampleId :
 ECA285D-1-2



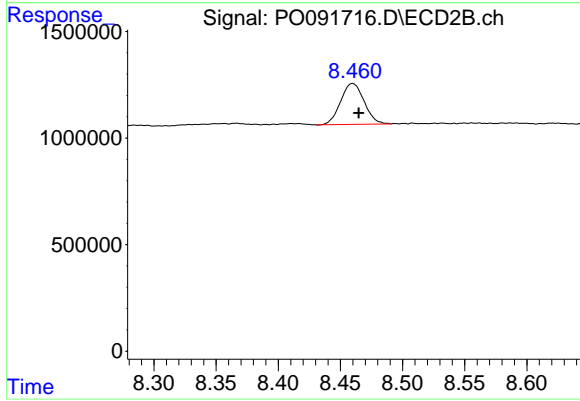
#1 Tetrachloro-m-xylene

R.T.: 3.466 min
 Delta R.T.: -0.003 min
 Response: 2759349
 Conc: 2.72 ng/ml



#2 Decachlorobiphenyl

R.T.: 10.028 min
 Delta R.T.: -0.004 min
 Response: 4990638
 Conc: 2.65 ng/ml



#2 Decachlorobiphenyl

R.T.: 8.460 min
 Delta R.T.: -0.005 min
 Response: 2515032
 Conc: 2.88 ng/ml