

Data Path : Z:\pestpcbsrv\HPCHEM1\ECD_0\Data\PO122918\
 Data File : P0053048.D
 Signal(s) : Signal #1: ECD1A.CH Signal #2: ECD2B.CH
 Acq On : 28 Dec 2018 15:57
 Operator : SM/SJ
 Sample : J6446-08DL 800X
 Misc :
 ALS Vial : 11 Sample Multiplier: 1

Instrument :
 ECD_O
 ClientSampleId :
 P001-SS021-0006-01DL

Integration File signal 1: autoint1.e
 Integration File signal 2: autoint2.e
 Quant Time: Dec 29 01:17:52 2018
 Quant Method : Z:\pestpcbsrv\HPCHEM1\ECD_0\methods\PO122818.M
 Quant Title : GC EXTRACTABLES
 QLast Update : Fri Dec 28 04:30:51 2018
 Response via : Initial Calibration
 Integrator: ChemStation 6890 Scale Mode: Small noise peaks clipped

Volume Inj. : 2 µl
 Signal #1 Phase : ZB-MR1 Signal #2 Phase: ZB-MR2
 Signal #1 Info : 30Mx0.32mmx 0.50µ Signal #2 Info : 30M x 0.32mm x 0.25µm

Compound	RT#1	RT#2	Resp#1	Resp#2	ng/ml	ng/ml
----------	------	------	--------	--------	-------	-------

System Monitoring Compounds

Target Compounds

3)	L1	AR-1016-1	5.333	0.000	338522	0	12.215	N.D.	#
4)	L1	AR-1016-2	5.357	0.000	644343	0	15.747	N.D.	#
5)	L1	AR-1016-3	5.357	4.422	644343	632085	26.593	102.071	#
6)	L1	AR-1016-4	5.508	4.422	407107	632085	19.396	134.825	#
7)	L1	AR-1016-5	5.800	4.617	1972699	1718144	105.752	273.837	#
10)	L2	AR-1221-3	0.000	3.609	0	319933	N.D.	62.161	#
11)	L3	AR-1232-1	0.000	3.609	0	319933	N.D.	71.247	#
13)	L3	AR-1232-3	5.357	4.422	644343	632085	33.832	223.295	#
14)	L3	AR-1232-4	5.508	4.457	407107	517249	42.510	219.101	#
15)	L3	AR-1232-5	5.599	4.617	2142834	1718144	366.271	646.764	#
16)	L4	AR-1242-1	5.333	0.000	338522	0	15.206	N.D.	#
17)	L4	AR-1242-2	5.357	0.000	644343	0	19.575	N.D.	#
18)	L4	AR-1242-3	5.357	4.422	644343	632085	32.762	126.021	#
19)	L4	AR-1242-4	5.508	4.457	407107	517249	24.603	110.194	#
20)	L4	AR-1242-5	6.235	4.940	3610938	3926944	212.608	646.306	#
21)	L5	AR-1248-1	5.333	0.000	338522	0	19.774	N.D.	#
22)	L5	AR-1248-2	5.599	4.422	2142834	632085	96.592	94.856	#
23)	L5	AR-1248-3	5.800	4.457	1972699	517249	77.278	75.810	#
24)	L5	AR-1248-4	6.198	4.617	3931587	1718144	139.097	203.209	#
25)	L5	AR-1248-5	6.235	4.977	3610938	1399994	132.615	160.027	#
26)	L6	AR-1254-1	6.171	4.940	12732076	3926944	407.780	257.965	#
27)	L6	AR-1254-2	6.384	5.080	10094576	3646230	207.935	279.086	#
28)	L6	AR-1254-3	6.748	5.469	6630456	7021994	130.025	339.737	#
29)	L6	AR-1254-4	7.029	5.675	3751568	935761	98.521	68.262	#
30)	L6	AR-1254-5	7.442	6.068	31457473	11579343	831.774	628.389	#
31)	L7	AR-1260-1	6.906	5.576	25397694	8831479	753.732	695.493	#
32)	L7	AR-1260-2	7.160	5.760	27936982	11078213	660.226	680.620	#
33)	L7	AR-1260-3	7.513	5.899	19206231	9258865	706.398	653.681	#
34)	L7	AR-1260-4	7.739	6.348	20276085	7186810	658.261	754.647	#
35)	L7	AR-1260-5	8.043	6.588	42296352	17348461	693.554	723.235	#
36)	L8	AR-1262-1	7.513	6.104	19206231	8181629	418.222	451.213	#
37)	L8	AR-1262-2	8.043	6.588	42296352	17348461	543.877	554.184	#
38)	L8	AR-1262-3	8.346	6.855	24909794	3252564	718.444	262.097	#
39)	L8	AR-1262-4	8.393	6.917	14848784	12048252	645.301	523.725	#
40)	L8	AR-1262-5	9.006	7.401	10095729	3877541	367.402	364.749	#
41)	L9	AR-1268-1	8.346	6.855	24909794	3252564	225.997	77.060	#
42)	L9	AR-1268-2	8.393	6.917	14848784	12048252	144.667	301.204	#
43)	L9	AR-1268-3	8.611	7.109	367651	175283	4.085	5.134	#
44)	L9	AR-1268-4	9.006	7.401	10095729	3877541	281.361	279.934	#
45)	L9	AR-1268-5	9.371	7.660	2040021	868328	7.548	8.632	#

Data Path : Z:\pestpcbsrv\HPCHEM1\ECD_0\Data\P0122918\
Data File : P0053048.D
Signal(s) : Signal #1: ECD1A.CH Signal #2: ECD2B.CH
Acq On : 28 Dec 2018 15:57
Operator : SM/SJ
Sample : J6446-08DL 800X
Misc :
ALS Vial : 11 Sample Multiplier: 1

Instrument :
ECD_0
ClientSampleId :
P001-SS021-0006-01DL

Integration File signal 1: autoint1.e
Integration File signal 2: autoint2.e
Quant Time: Dec 29 01:17:52 2018
Quant Method : Z:\pestpcbsrv\HPCHEM1\ECD_0\methods\P0122818.M
Quant Title : GC EXTRACTABLES
QLast Update : Fri Dec 28 04:30:51 2018
Response via : Initial Calibration
Integrator: ChemStation 6890 Scale Mode: Small noise peaks clipped

Volume Inj. : 2 µl
Signal #1 Phase : ZB-MR1 Signal #2 Phase: ZB-MR2
Signal #1 Info : 30Mx0.32mmx 0.50µ Signal #2 Info : 30M x 0.32mm x 0.25µm

Compound	RT#1	RT#2	Resp#1	Resp#2	ng/ml	ng/ml
----------	------	------	--------	--------	-------	-------

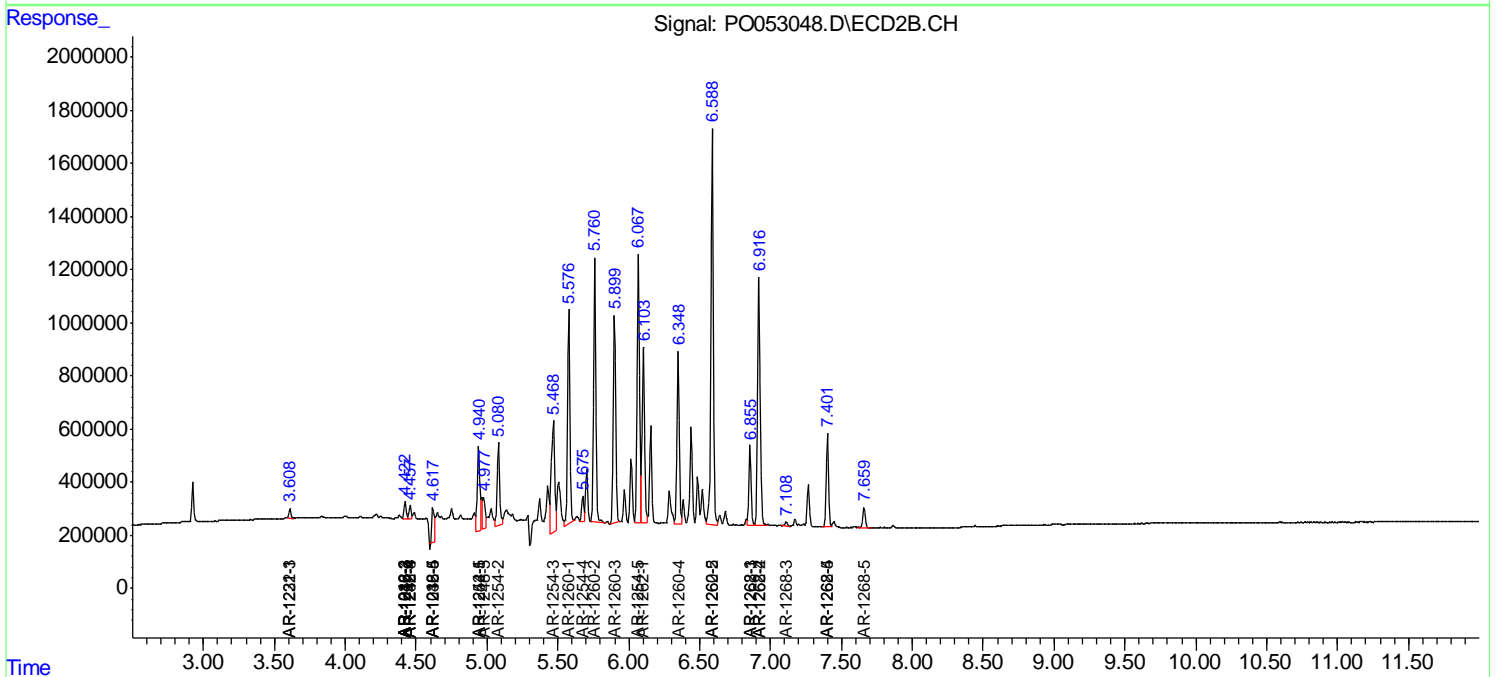
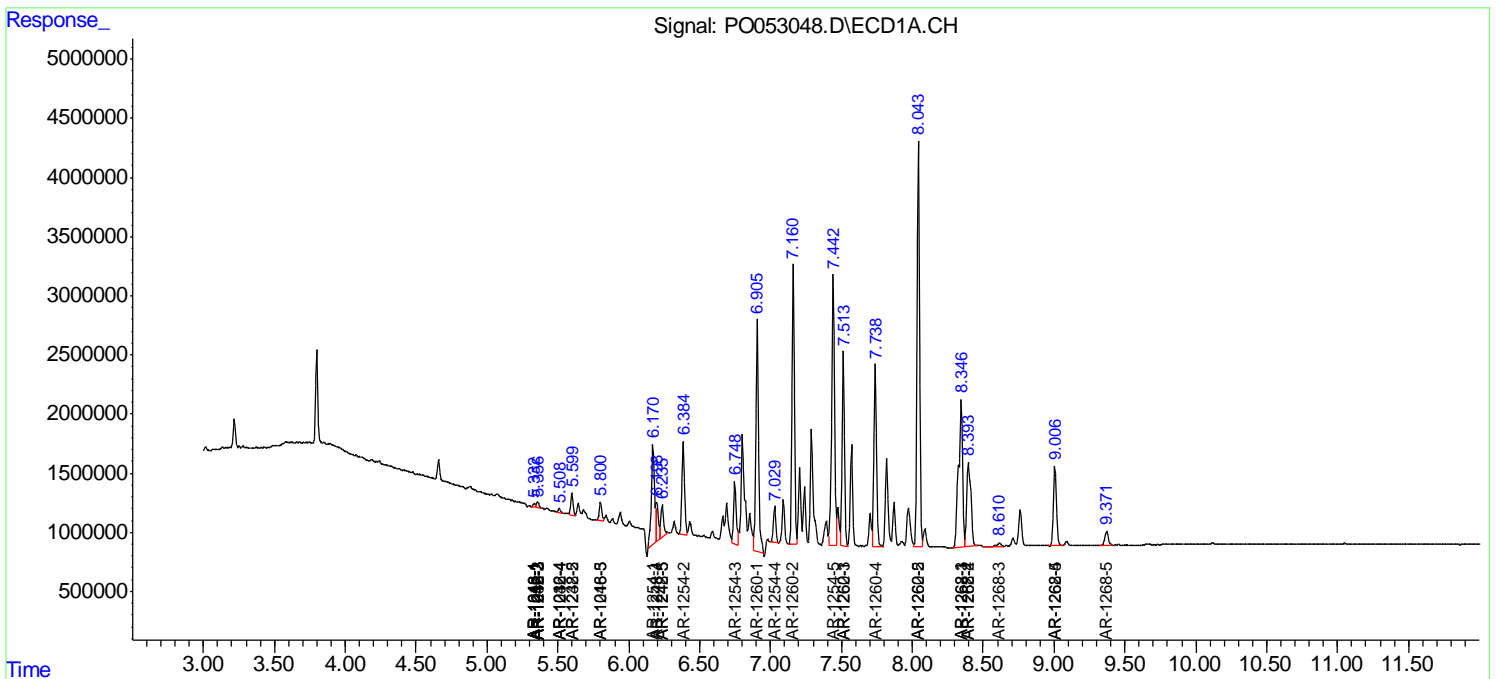
(f)=RT Delta > 1/2 Window (#)=Amounts differ by > 25% (m)=manual int.

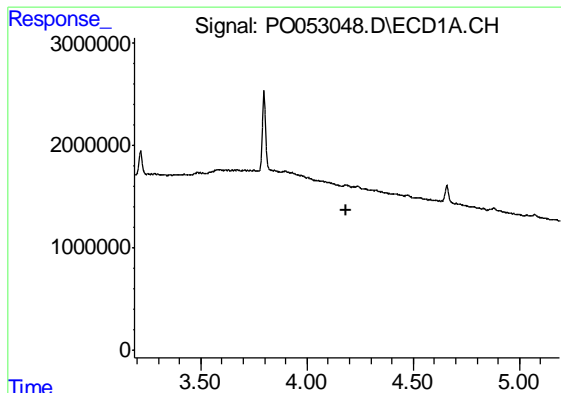
Data Path : Z:\pestpcbsrv\HPCHEM1\ECD_O\Data\PO122918\
 Data File : PO053048.D
 Signal(s) : Signal #1: ECD1A.CH Signal #2: ECD2B.CH
 Acq On : 28 Dec 2018 15:57
 Operator : SM/SJ
 Sample : J6446-08DL 800X
 Misc :
 ALS Vial : 11 Sample Multiplier: 1

Instrument :
 ECD_O
Client Sampled :
 P001-SS021-0006-01DL

Integration File signal 1: autoint1.e
 Integration File signal 2: autoint2.e
 Quant Time: Dec 29 01:17:52 2018
 Quant Method : Z:\pestpcbsrv\HPCHEM1\ECD_O\methods\PO122818.M
 Quant Title : GC EXTRACTABLES
 QLast Update : Fri Dec 28 04:30:51 2018
 Response via : Initial Calibration
 Integrator: ChemStation 6890 Scale Mode: Small noise peaks clipped

Volume Inj. : 2 µl
 Signal #1 Phase : ZB-MR1 Signal #2 Phase: ZB-MR2
 Signal #1 Info : 30Mx0.32mmx 0.50µ Signal #2 Info : 30M x 0.32mm x 0.25µm

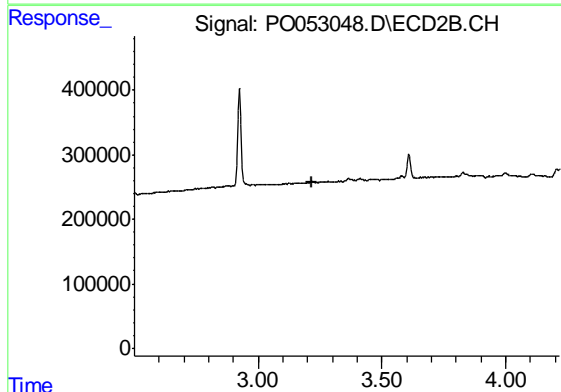




#1 Tetrachloro-m-xylene

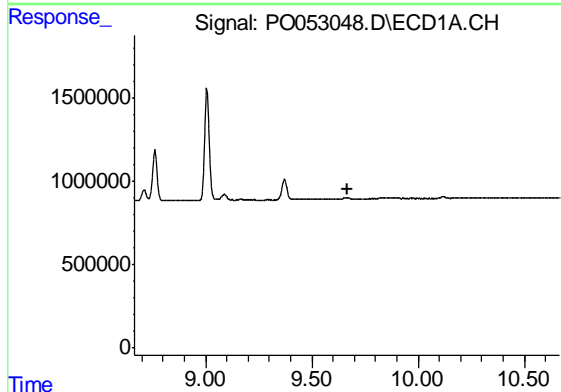
R.T.: 0.000 min
 Exp R.T. : 4.188 min
 Response: 0
 Conc: N.D.

Instrument :
 ECD_O
 ClientSampleId :
 P001-SS021-0006-01DL



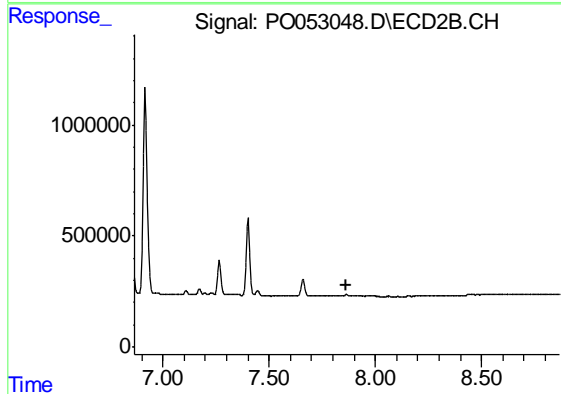
#1 Tetrachloro-m-xylene

R.T.: 0.000 min
 Exp R.T. : 3.217 min
 Response: 0
 Conc: N.D.



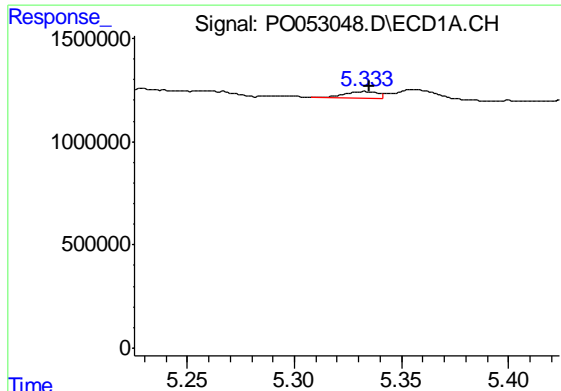
#2 Decachlorobiphenyl

R.T.: 0.000 min
 Exp R.T. : 9.665 min
 Response: 0
 Conc: N.D.



#2 Decachlorobiphenyl

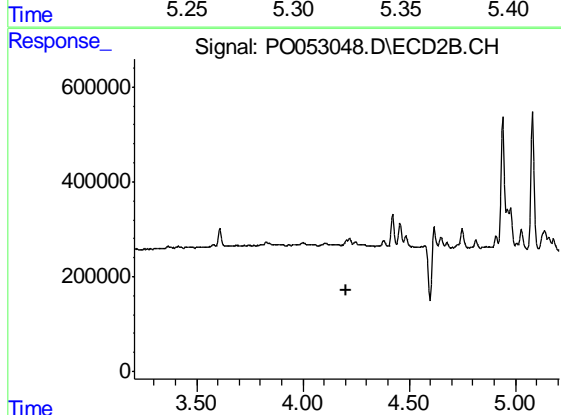
R.T.: 0.000 min
 Exp R.T. : 7.866 min
 Response: 0
 Conc: N.D.



#3 AR-1016-1

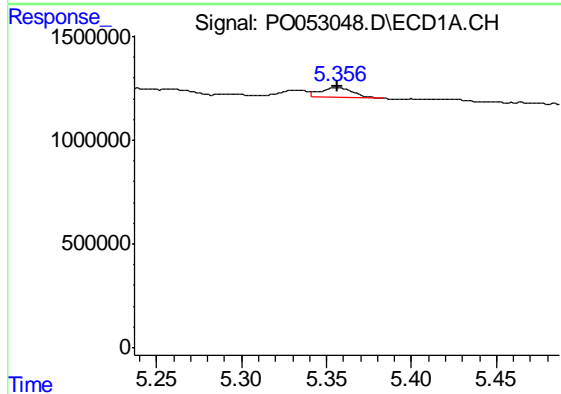
R.T.: 5.333 min
 Delta R.T.: -0.002 min
 Response: 338522
 Conc: 12.22 ng/ml

Instrument :
 ECD_O
ClientSampleId :
 P001-SS021-0006-01DL



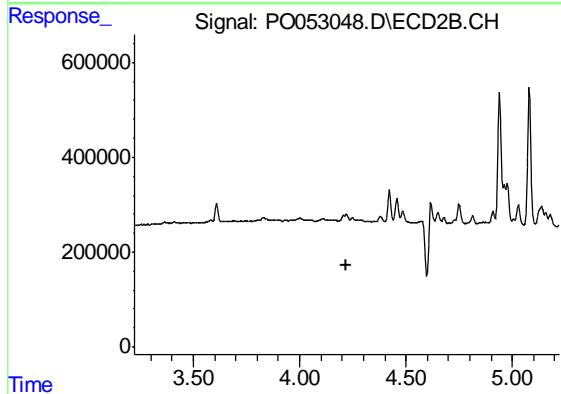
#3 AR-1016-1

R.T.: 0.000 min
 Exp R.T. : 4.207 min
 Response: 0
 Conc: N.D.



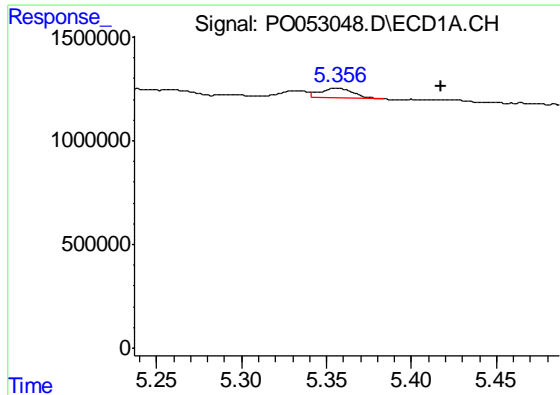
#4 AR-1016-2

R.T.: 5.357 min
 Delta R.T.: 0.000 min
 Response: 644343
 Conc: 15.75 ng/ml



#4 AR-1016-2

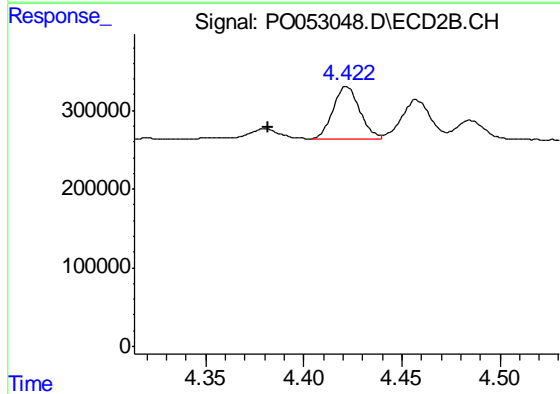
R.T.: 0.000 min
 Exp R.T. : 4.222 min
 Response: 0
 Conc: N.D.



#5 AR-1016-3

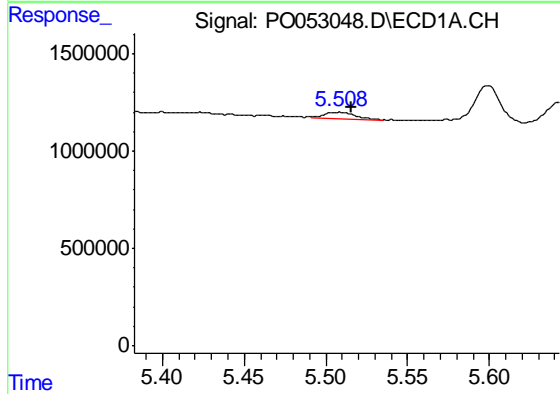
R.T.: 5.357 min
 Delta R.T.: -0.061 min
 Response: 644343
 Conc: 26.59 ng/ml

Instrument :
 ECD_O
ClientSampleId :
 P001-SS021-0006-01DL



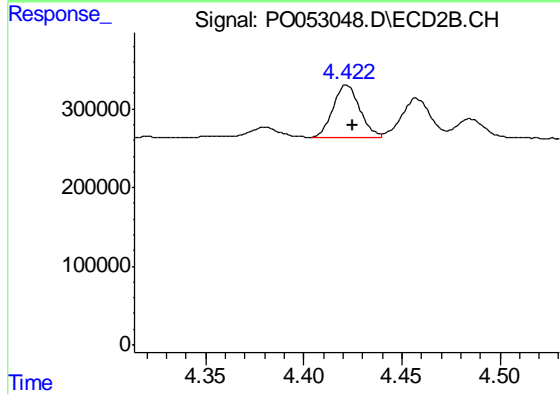
#5 AR-1016-3

R.T.: 4.422 min
 Delta R.T.: 0.040 min
 Response: 632085
 Conc: 102.07 ng/ml



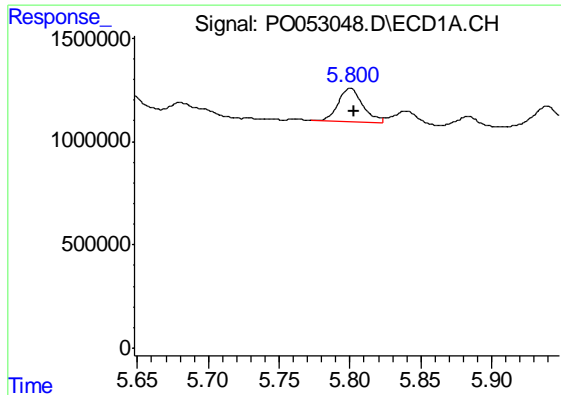
#6 AR-1016-4

R.T.: 5.508 min
 Delta R.T.: -0.007 min
 Response: 407107
 Conc: 19.40 ng/ml



#6 AR-1016-4

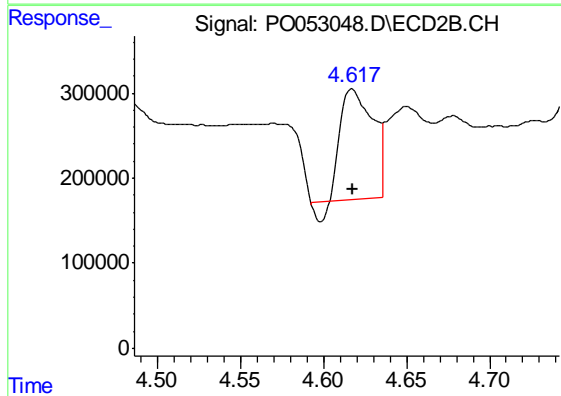
R.T.: 4.422 min
 Delta R.T.: -0.003 min
 Response: 632085
 Conc: 134.82 ng/ml



#7 AR-1016-5

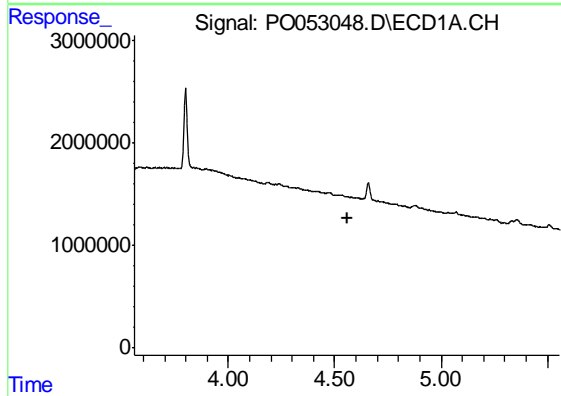
R.T.: 5.800 min
 Delta R.T.: -0.002 min
 Response: 1972699
 Conc: 105.75 ng/ml

Instrument :
 ECD_O
ClientSampleId :
 P001-SS021-0006-01DL



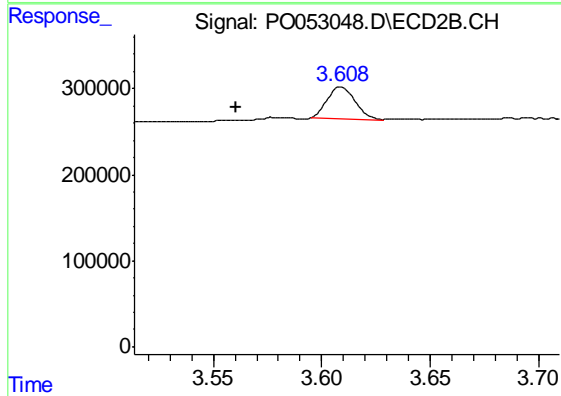
#7 AR-1016-5

R.T.: 4.617 min
 Delta R.T.: 0.000 min
 Response: 1718144
 Conc: 273.84 ng/ml



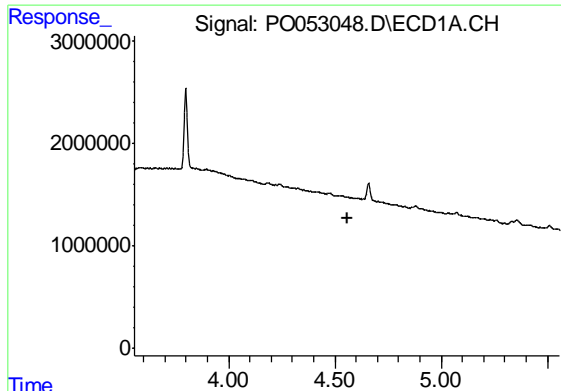
#10 AR-1221-3

R.T.: 0.000 min
 Exp R.T. : 4.558 min
 Response: 0
 Conc: N.D.



#10 AR-1221-3

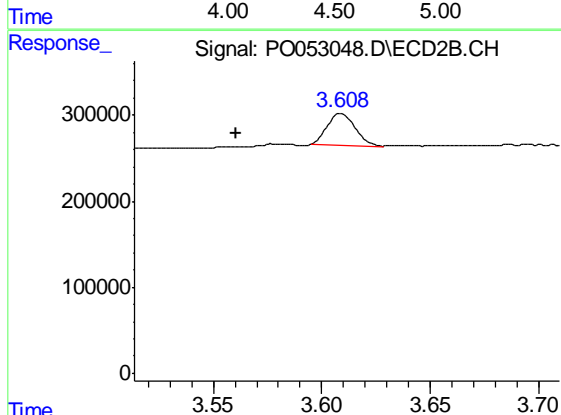
R.T.: 3.609 min
 Delta R.T.: 0.048 min
 Response: 319933
 Conc: 62.16 ng/ml



#11 AR-1232-1

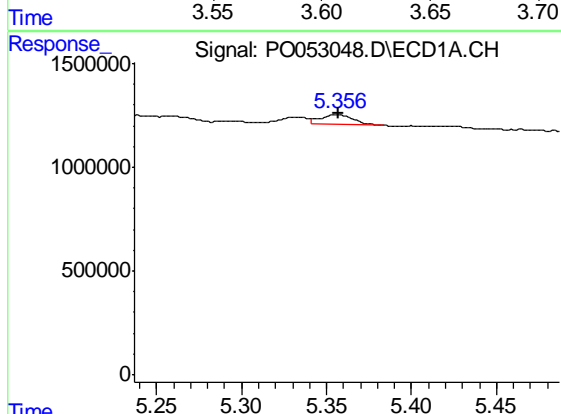
R.T.: 0.000 min
 Exp R.T. : 4.557 min
 Response: 0
 Conc: N.D.

Instrument :
 ECD_O
 ClientSampleId :
 P001-SS021-0006-01DL



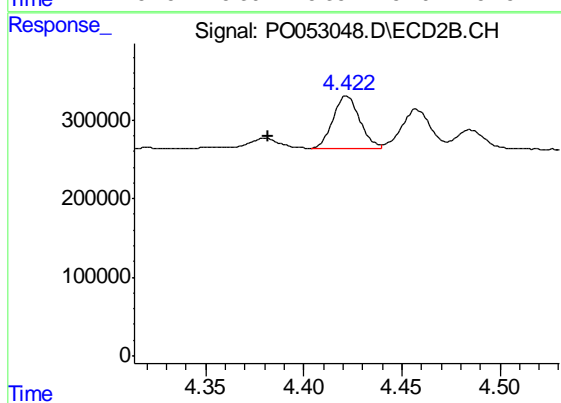
#11 AR-1232-1

R.T.: 3.609 min
 Delta R.T.: 0.048 min
 Response: 319933
 Conc: 71.25 ng/ml



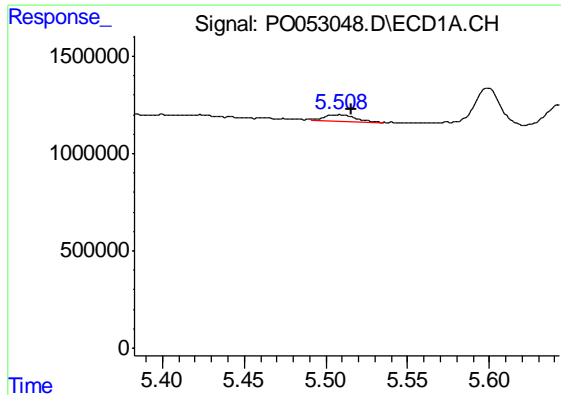
#13 AR-1232-3

R.T.: 5.357 min
 Delta R.T.: 0.000 min
 Response: 644343
 Conc: 33.83 ng/ml



#13 AR-1232-3

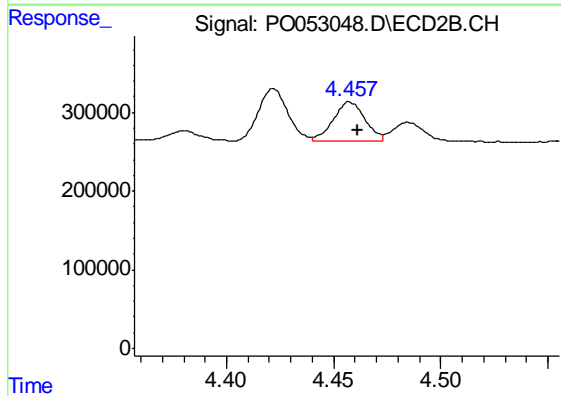
R.T.: 4.422 min
 Delta R.T.: 0.040 min
 Response: 632085
 Conc: 223.30 ng/ml



#14 AR-1232-4

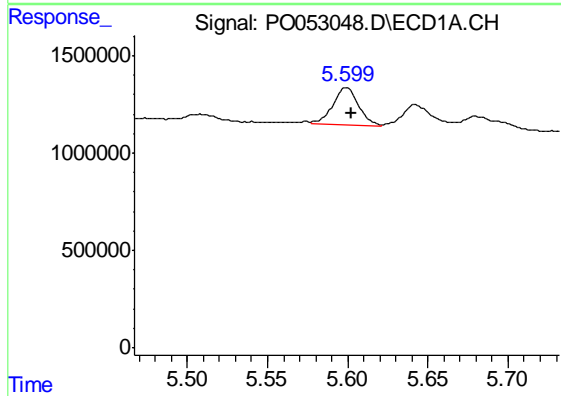
R.T.: 5.508 min
 Delta R.T.: -0.007 min
 Response: 407107
 Conc: 42.51 ng/ml

Instrument :
 ECD_O
ClientSampleId :
 P001-SS021-0006-01DL



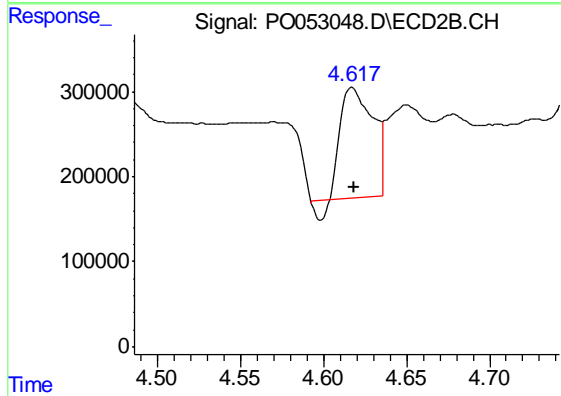
#14 AR-1232-4

R.T.: 4.457 min
 Delta R.T.: -0.004 min
 Response: 517249
 Conc: 219.10 ng/ml



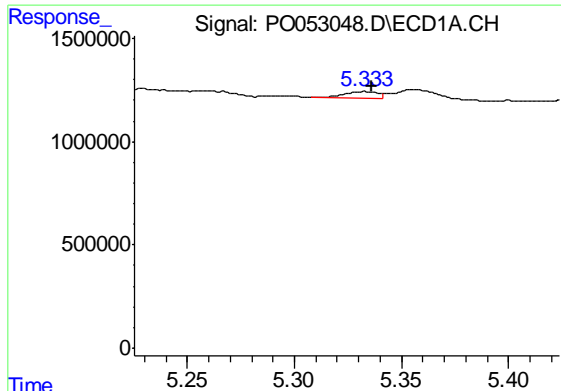
#15 AR-1232-5

R.T.: 5.599 min
 Delta R.T.: -0.003 min
 Response: 2142834
 Conc: 366.27 ng/ml



#15 AR-1232-5

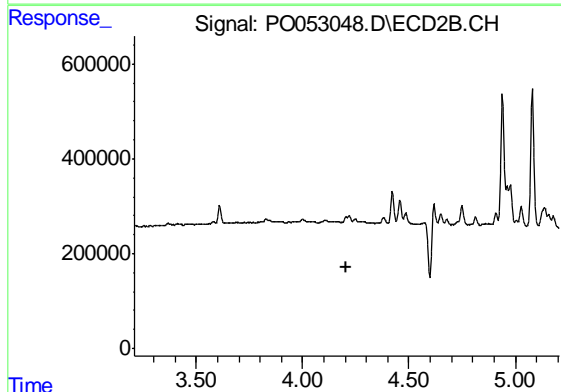
R.T.: 4.617 min
 Delta R.T.: -0.001 min
 Response: 1718144
 Conc: 646.76 ng/ml



#16 AR-1242-1

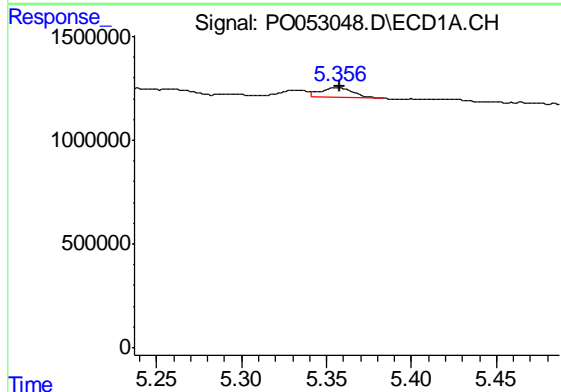
R.T.: 5.333 min
 Delta R.T.: -0.003 min
 Response: 338522
 Conc: 15.21 ng/ml

Instrument :
 ECD_O
 ClientSampleId :
 P001-SS021-0006-01DL



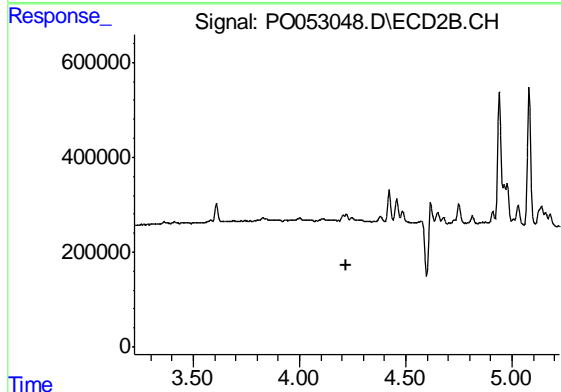
#16 AR-1242-1

R.T.: 0.000 min
 Exp R.T. : 4.208 min
 Response: 0
 Conc: N.D.



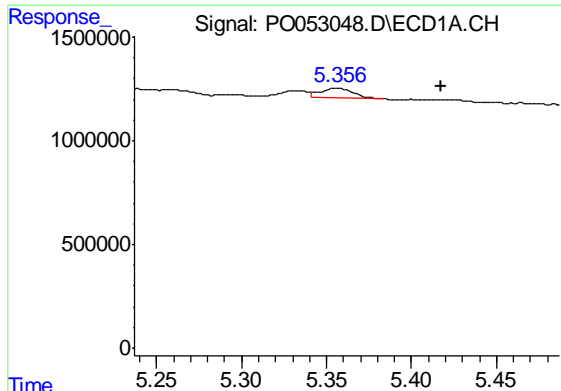
#17 AR-1242-2

R.T.: 5.357 min
 Delta R.T.: 0.000 min
 Response: 644343
 Conc: 19.57 ng/ml



#17 AR-1242-2

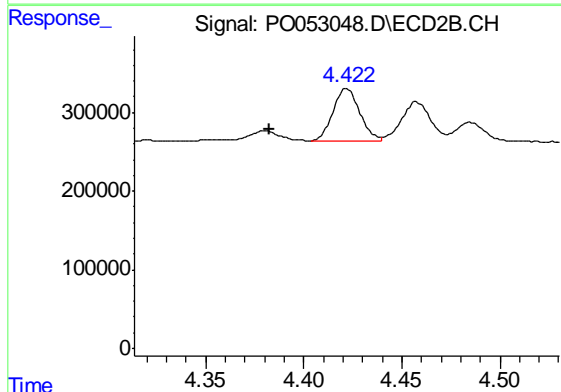
R.T.: 0.000 min
 Exp R.T. : 4.223 min
 Response: 0
 Conc: N.D.



#18 AR-1242-3

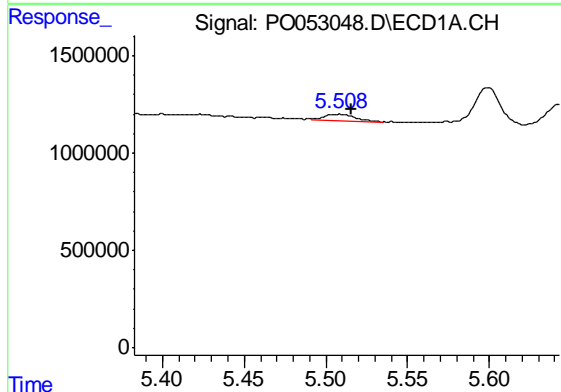
R.T.: 5.357 min
 Delta R.T.: -0.061 min
 Response: 644343
 Conc: 32.76 ng/ml

Instrument :
 ECD_O
ClientSampleId :
 P001-SS021-0006-01DL



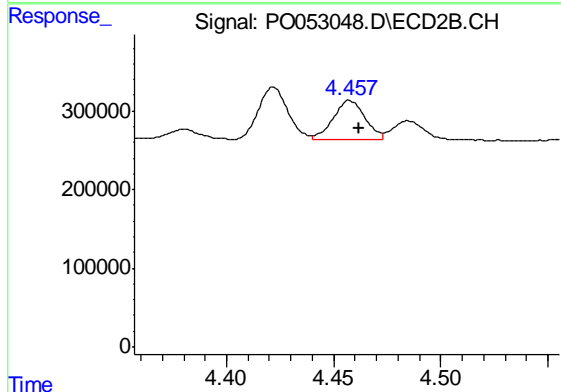
#18 AR-1242-3

R.T.: 4.422 min
 Delta R.T.: 0.039 min
 Response: 632085
 Conc: 126.02 ng/ml



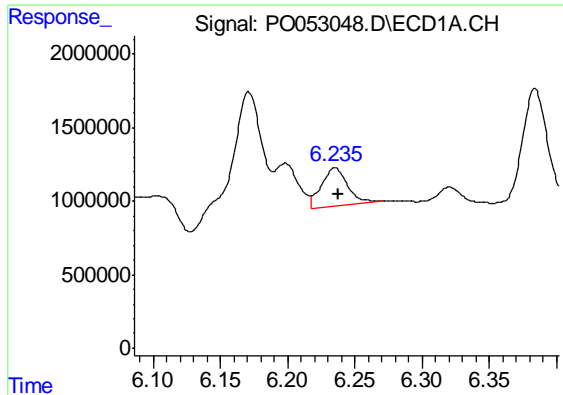
#19 AR-1242-4

R.T.: 5.508 min
 Delta R.T.: -0.007 min
 Response: 407107
 Conc: 24.60 ng/ml



#19 AR-1242-4

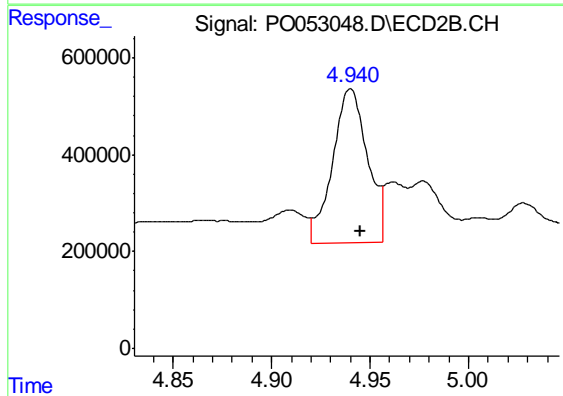
R.T.: 4.457 min
 Delta R.T.: -0.005 min
 Response: 517249
 Conc: 110.19 ng/ml



#20 AR-1242-5

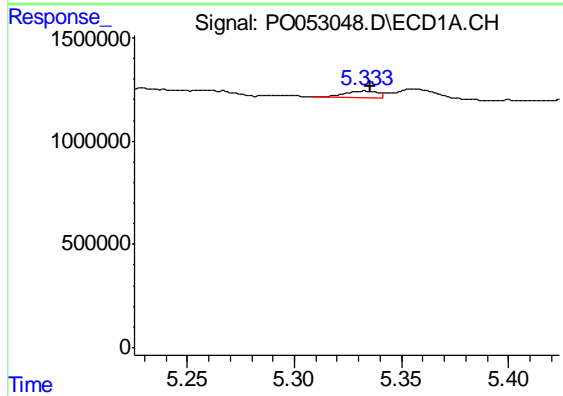
R.T.: 6.235 min
 Delta R.T.: -0.003 min
 Response: 3610938
 Conc: 212.61 ng/ml

Instrument :
 ECD_O
 ClientSampleId :
 P001-SS021-0006-01DL



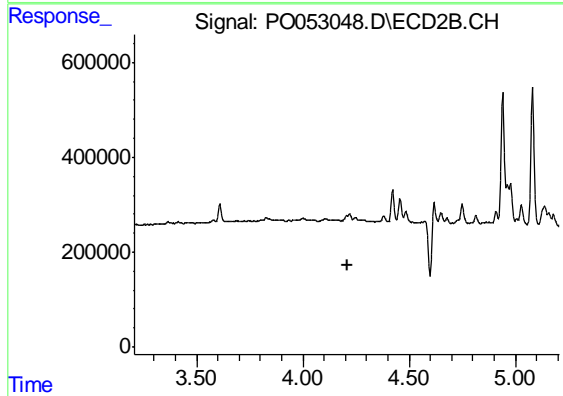
#20 AR-1242-5

R.T.: 4.940 min
 Delta R.T.: -0.005 min
 Response: 3926944
 Conc: 646.31 ng/ml



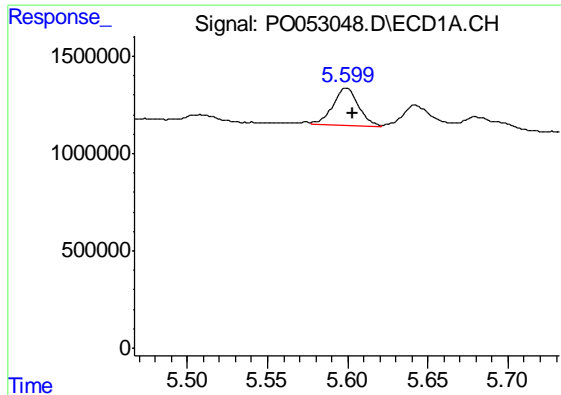
#21 AR-1248-1

R.T.: 5.333 min
 Delta R.T.: -0.002 min
 Response: 338522
 Conc: 19.77 ng/ml



#21 AR-1248-1

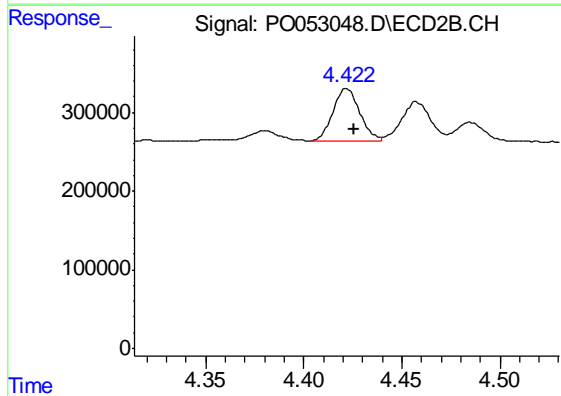
R.T.: 0.000 min
 Exp R.T. : 4.208 min
 Response: 0
 Conc: N.D.



#22 AR-1248-2

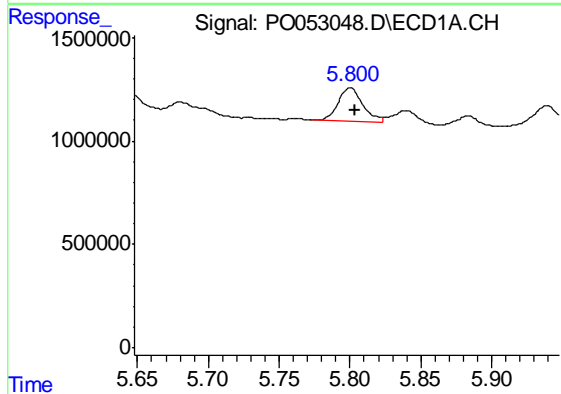
R.T.: 5.599 min
 Delta R.T.: -0.004 min
 Response: 2142834
 Conc: 96.59 ng/ml

Instrument :
 ECD_O
 ClientSampleId :
 P001-SS021-0006-01DL



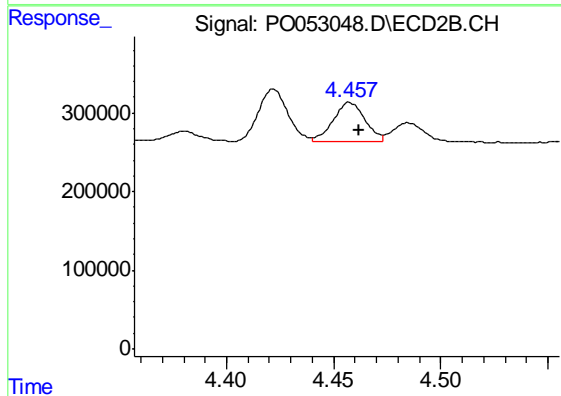
#22 AR-1248-2

R.T.: 4.422 min
 Delta R.T.: -0.004 min
 Response: 632085
 Conc: 94.86 ng/ml



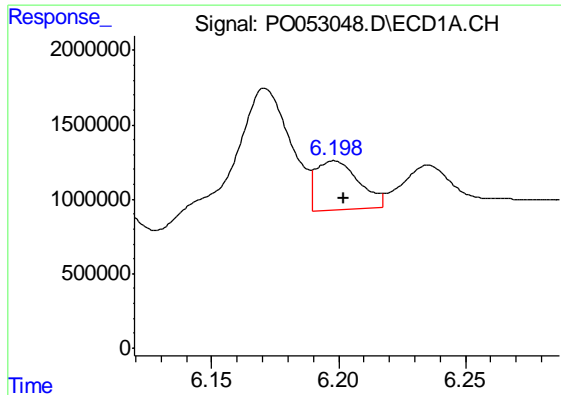
#23 AR-1248-3

R.T.: 5.800 min
 Delta R.T.: -0.003 min
 Response: 1972699
 Conc: 77.28 ng/ml



#23 AR-1248-3

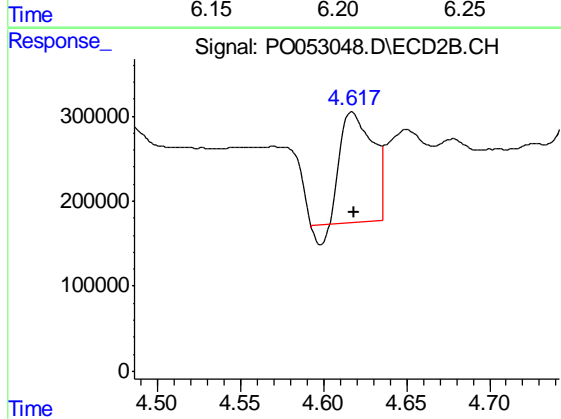
R.T.: 4.457 min
 Delta R.T.: -0.004 min
 Response: 517249
 Conc: 75.81 ng/ml



#24 AR-1248-4

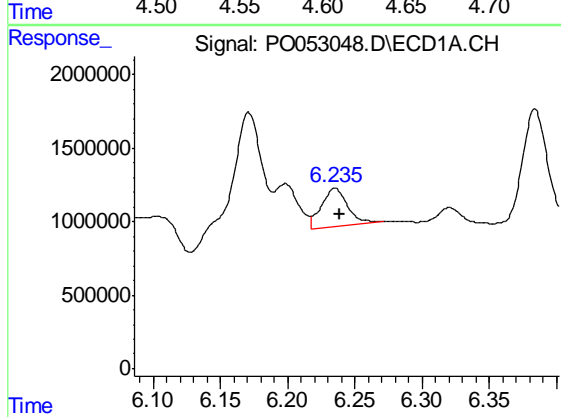
R.T.: 6.198 min
 Delta R.T.: -0.003 min
 Response: 3931587
 Conc: 139.10 ng/ml

Instrument :
 ECD_O
 ClientSampleId :
 P001-SS021-0006-01DL



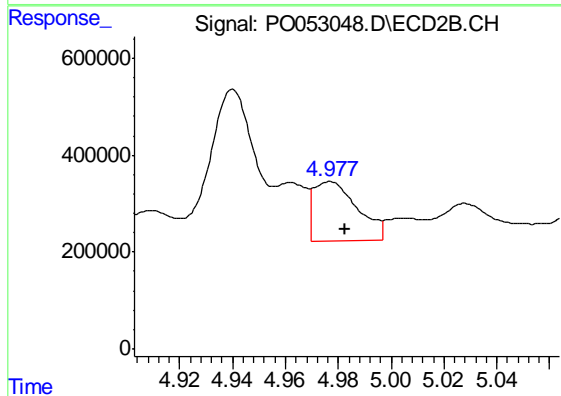
#24 AR-1248-4

R.T.: 4.617 min
 Delta R.T.: -0.002 min
 Response: 1718144
 Conc: 203.21 ng/ml



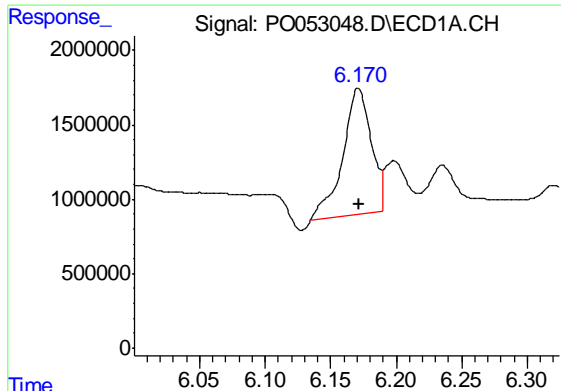
#25 AR-1248-5

R.T.: 6.235 min
 Delta R.T.: -0.004 min
 Response: 3610938
 Conc: 132.61 ng/ml



#25 AR-1248-5

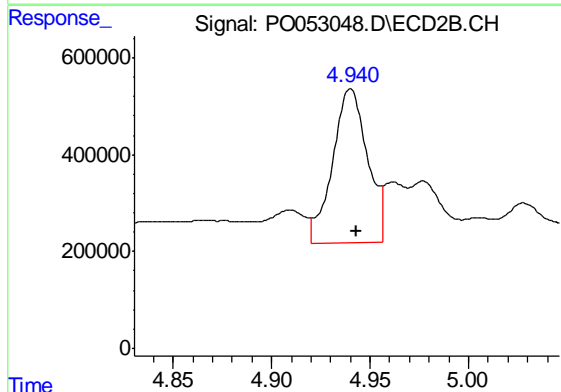
R.T.: 4.977 min
 Delta R.T.: -0.005 min
 Response: 1399994
 Conc: 160.03 ng/ml



#26 AR-1254-1

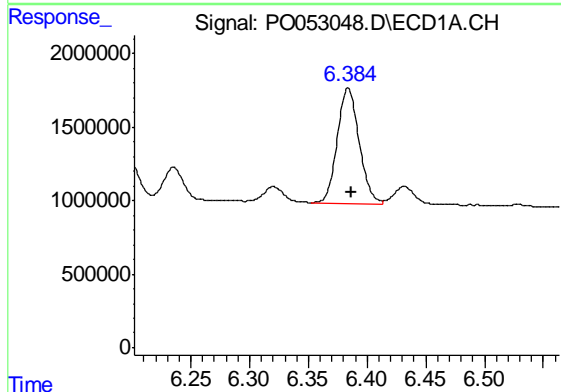
R.T.: 6.171 min
 Delta R.T.: -0.001 min
 Response: 12732076
 Conc: 407.78 ng/ml

Instrument :
 ECD_O
 ClientSampleId :
 P001-SS021-0006-01DL



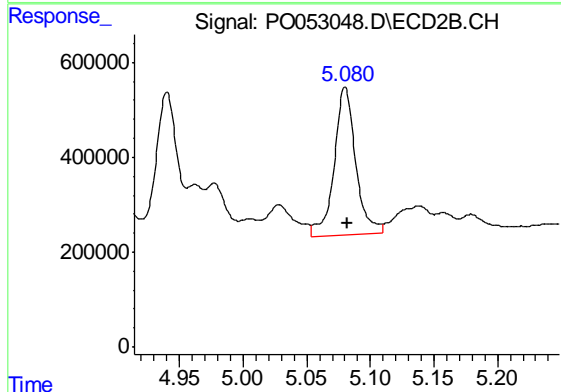
#26 AR-1254-1

R.T.: 4.940 min
 Delta R.T.: -0.003 min
 Response: 3926944
 Conc: 257.97 ng/ml



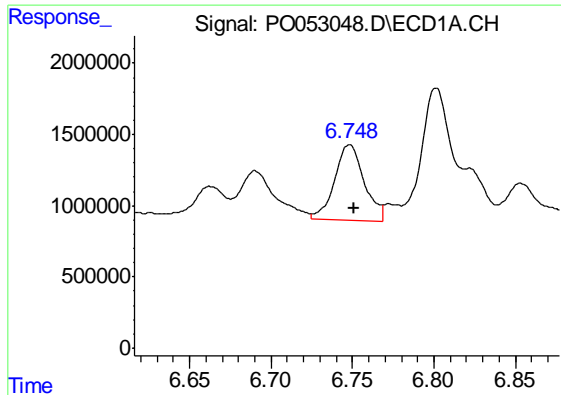
#27 AR-1254-2

R.T.: 6.384 min
 Delta R.T.: -0.003 min
 Response: 10094576
 Conc: 207.93 ng/ml



#27 AR-1254-2

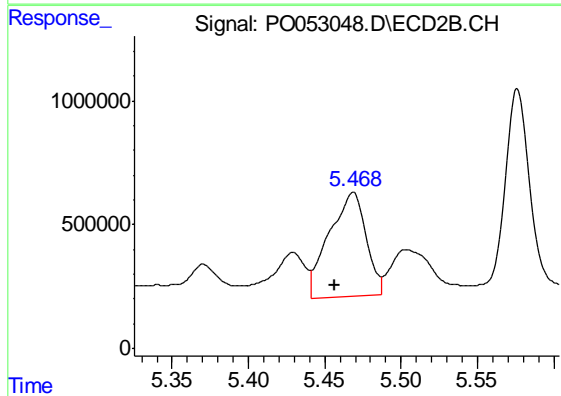
R.T.: 5.080 min
 Delta R.T.: -0.002 min
 Response: 3646230
 Conc: 279.09 ng/ml



#28 AR-1254-3

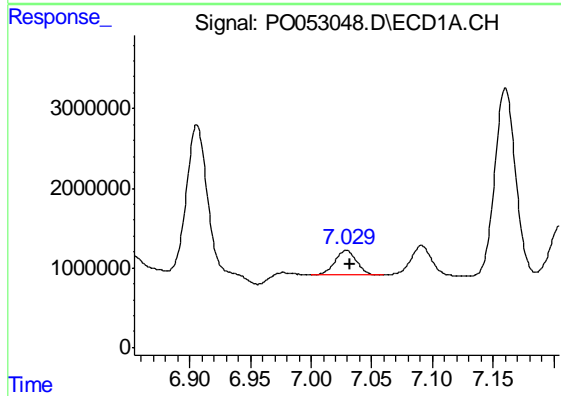
R.T.: 6.748 min
 Delta R.T.: -0.002 min
 Response: 6630456
 Conc: 130.02 ng/ml

Instrument :
 ECD_O
 ClientSampleId :
 P001-SS021-0006-01DL



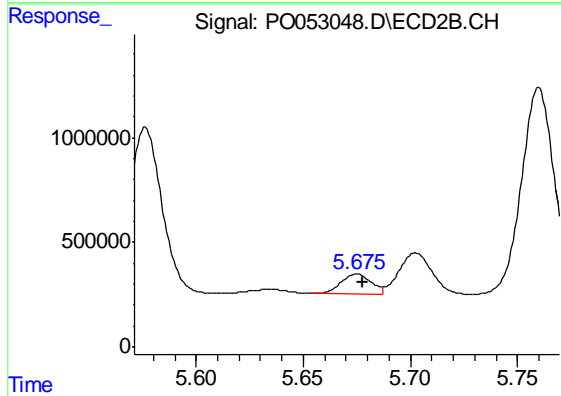
#28 AR-1254-3

R.T.: 5.469 min
 Delta R.T.: 0.012 min
 Response: 7021994
 Conc: 339.74 ng/ml



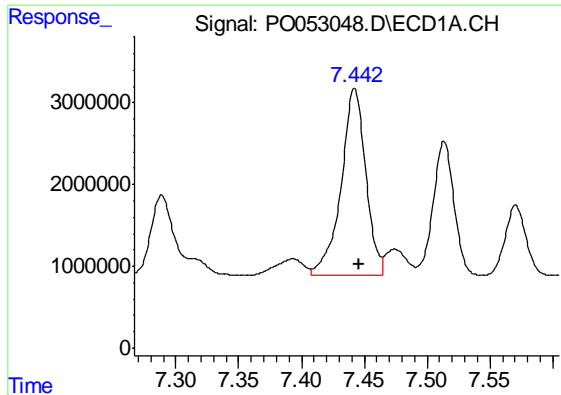
#29 AR-1254-4

R.T.: 7.029 min
 Delta R.T.: -0.003 min
 Response: 3751568
 Conc: 98.52 ng/ml



#29 AR-1254-4

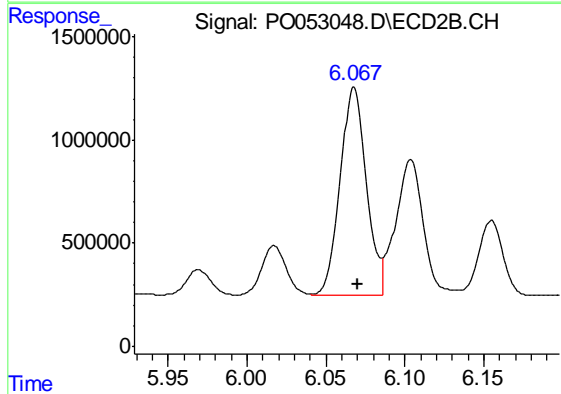
R.T.: 5.675 min
 Delta R.T.: -0.003 min
 Response: 935761
 Conc: 68.26 ng/ml



#30 AR-1254-5

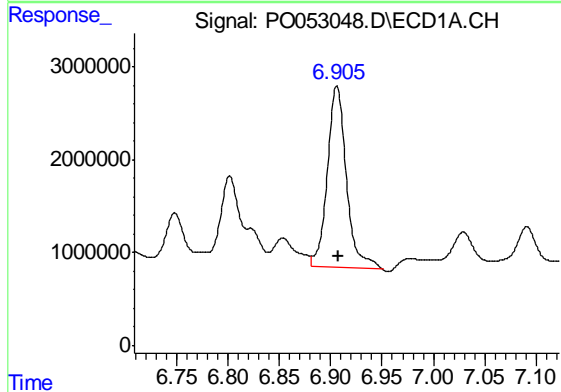
R.T.: 7.442 min
 Delta R.T.: -0.003 min
 Response: 31457473
 Conc: 831.77 ng/ml

Instrument :
 ECD_O
 ClientSampleId :
 P001-SS021-0006-01DL



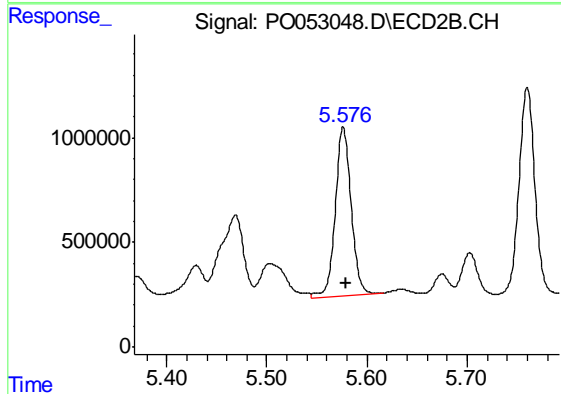
#30 AR-1254-5

R.T.: 6.068 min
 Delta R.T.: -0.003 min
 Response: 11579343
 Conc: 628.39 ng/ml



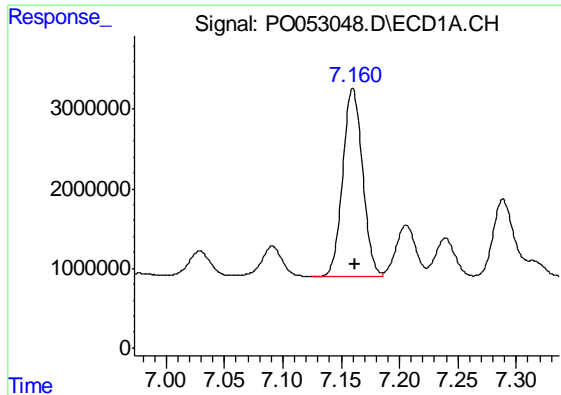
#31 AR-1260-1

R.T.: 6.906 min
 Delta R.T.: -0.002 min
 Response: 25397694
 Conc: 753.73 ng/ml



#31 AR-1260-1

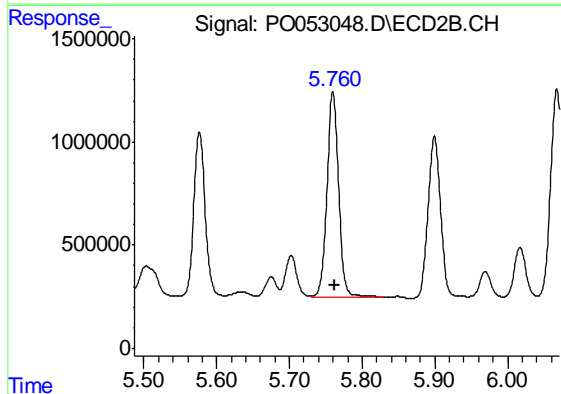
R.T.: 5.576 min
 Delta R.T.: -0.003 min
 Response: 8831479
 Conc: 695.49 ng/ml



#32 AR-1260-2

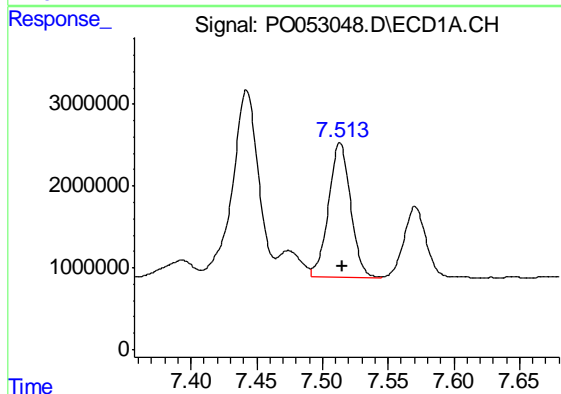
R.T.: 7.160 min
 Delta R.T.: -0.003 min
 Response: 27936982
 Conc: 660.23 ng/ml

Instrument :
 ECD_O
 ClientSampleId :
 P001-SS021-0006-01DL



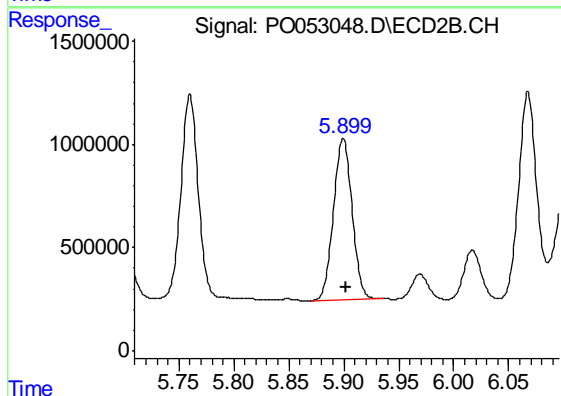
#32 AR-1260-2

R.T.: 5.760 min
 Delta R.T.: -0.003 min
 Response: 11078213
 Conc: 680.62 ng/ml



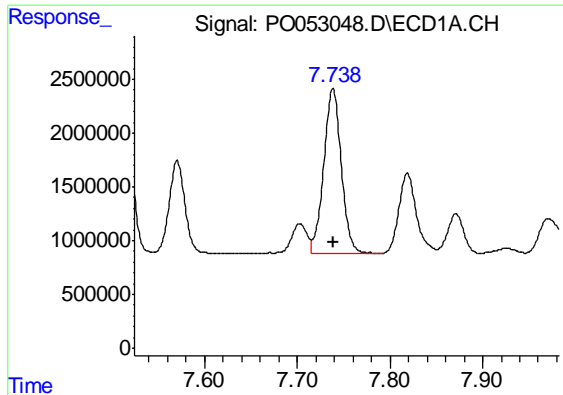
#33 AR-1260-3

R.T.: 7.513 min
 Delta R.T.: -0.002 min
 Response: 19206231
 Conc: 706.40 ng/ml



#33 AR-1260-3

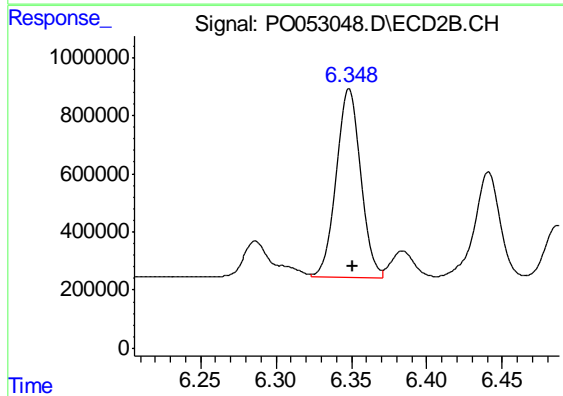
R.T.: 5.899 min
 Delta R.T.: -0.003 min
 Response: 9258865
 Conc: 653.68 ng/ml



#34 AR-1260-4

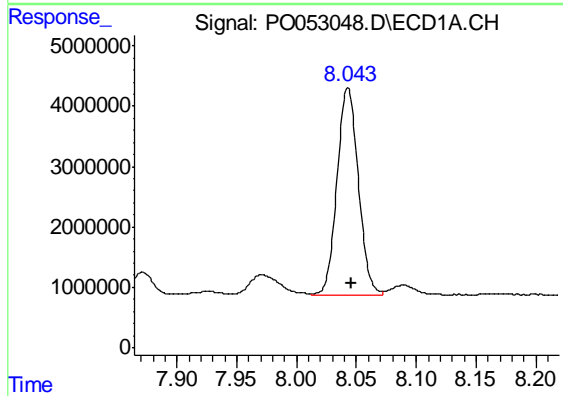
R.T.: 7.739 min
 Delta R.T.: 0.000 min
 Response: 20276085
 Conc: 658.26 ng/ml

Instrument :
 ECD_O
 ClientSampleId :
 P001-SS021-0006-01DL



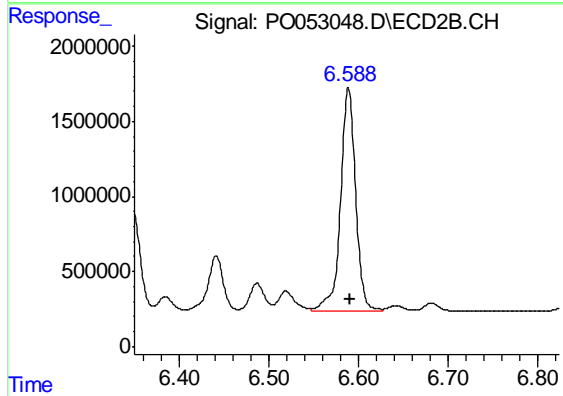
#34 AR-1260-4

R.T.: 6.348 min
 Delta R.T.: -0.002 min
 Response: 7186810
 Conc: 754.65 ng/ml



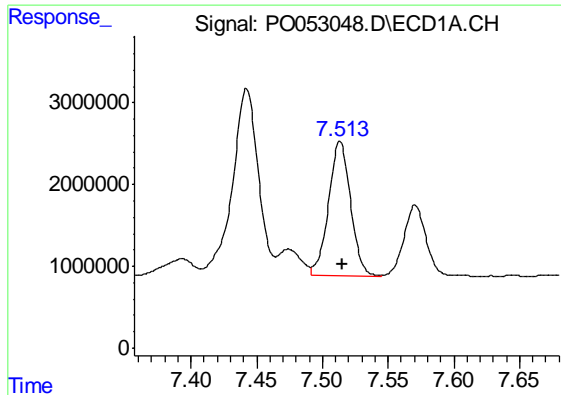
#35 AR-1260-5

R.T.: 8.043 min
 Delta R.T.: -0.002 min
 Response: 42296352
 Conc: 693.55 ng/ml



#35 AR-1260-5

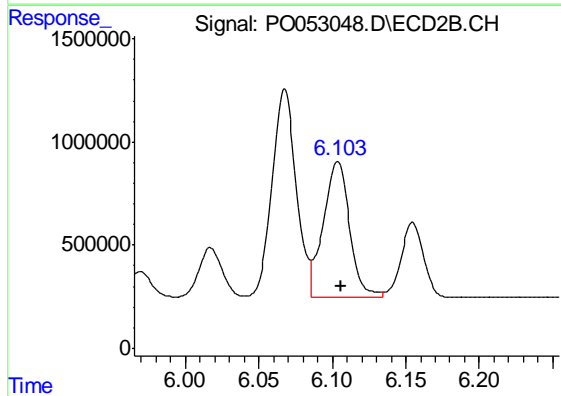
R.T.: 6.588 min
 Delta R.T.: -0.002 min
 Response: 17348461
 Conc: 723.24 ng/ml



#36 AR-1262-1

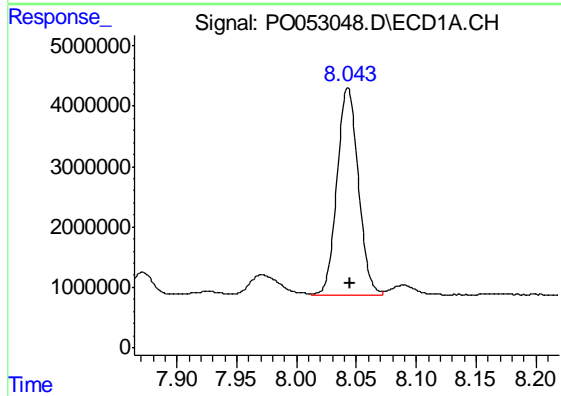
R.T.: 7.513 min
 Delta R.T.: -0.002 min
 Response: 19206231
 Conc: 418.22 ng/ml

Instrument :
 ECD_O
 ClientSampleId :
 P001-SS021-0006-01DL



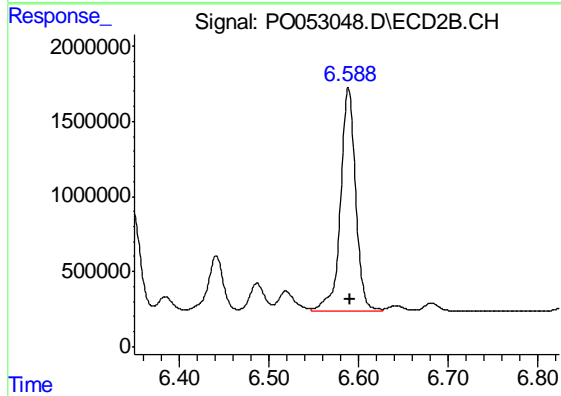
#36 AR-1262-1

R.T.: 6.104 min
 Delta R.T.: -0.003 min
 Response: 8181629
 Conc: 451.21 ng/ml



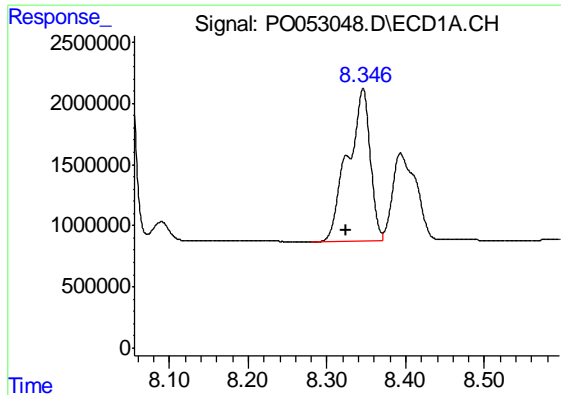
#37 AR-1262-2

R.T.: 8.043 min
 Delta R.T.: -0.001 min
 Response: 42296352
 Conc: 543.88 ng/ml



#37 AR-1262-2

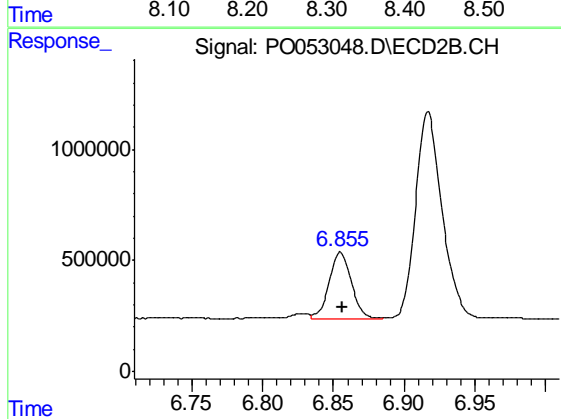
R.T.: 6.588 min
 Delta R.T.: -0.001 min
 Response: 17348461
 Conc: 554.18 ng/ml



#38 AR-1262-3

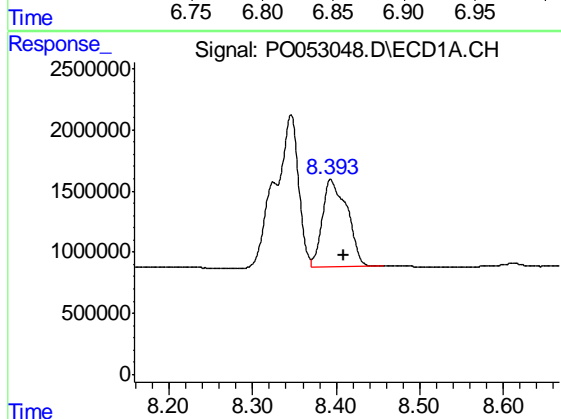
R.T.: 8.346 min
 Delta R.T.: 0.021 min
 Response: 24909794
 Conc: 718.44 ng/ml

Instrument :
 ECD_O
 ClientSampleId :
 P001-SS021-0006-01DL



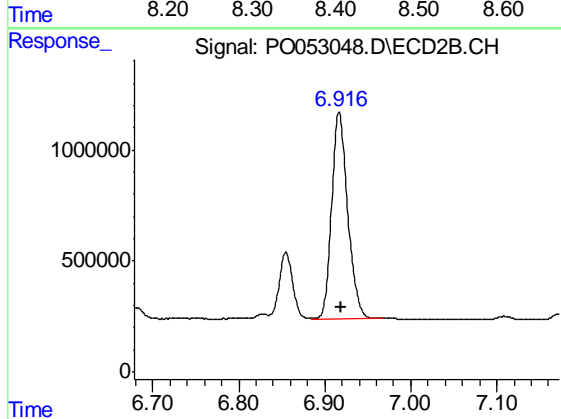
#38 AR-1262-3

R.T.: 6.855 min
 Delta R.T.: -0.001 min
 Response: 3252564
 Conc: 262.10 ng/ml



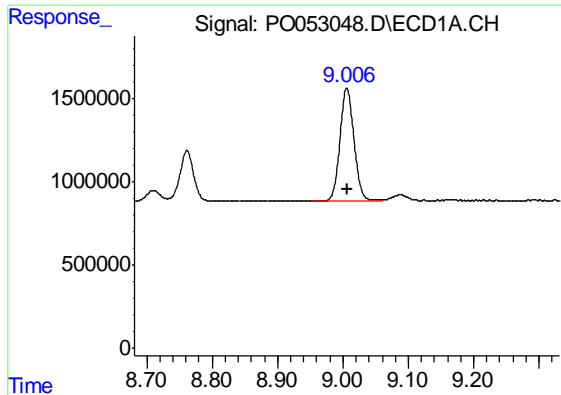
#39 AR-1262-4

R.T.: 8.393 min
 Delta R.T.: -0.016 min
 Response: 14848784
 Conc: 645.30 ng/ml



#39 AR-1262-4

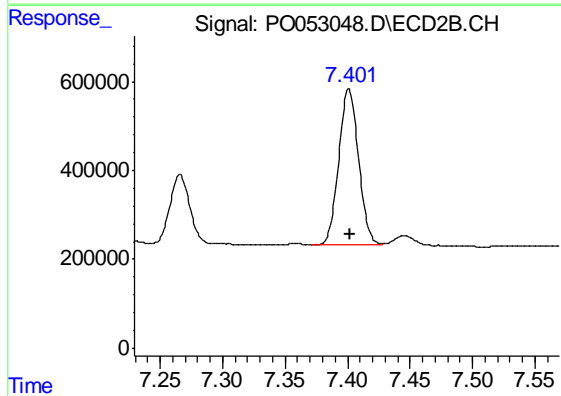
R.T.: 6.917 min
 Delta R.T.: -0.003 min
 Response: 12048252
 Conc: 523.72 ng/ml



#40 AR-1262-5

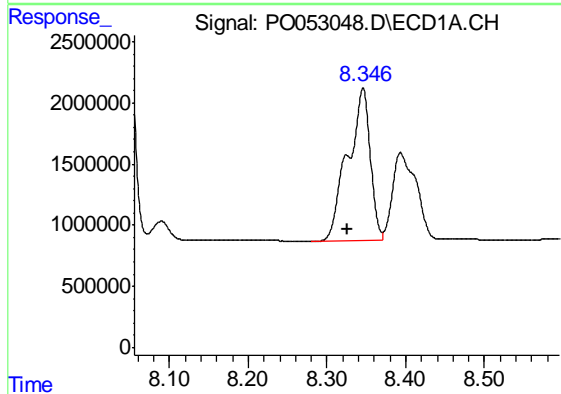
R.T.: 9.006 min
Delta R.T.: -0.002 min
Response: 10095729
Conc: 367.40 ng/ml

Instrument :
ECD_O
ClientSampleId :
P001-SS021-0006-01DL



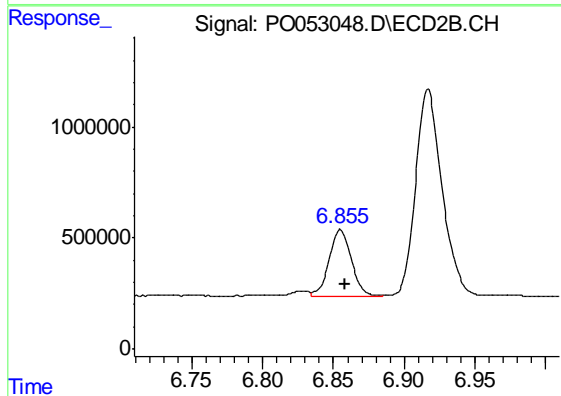
#40 AR-1262-5

R.T.: 7.401 min
Delta R.T.: 0.000 min
Response: 3877541
Conc: 364.75 ng/ml



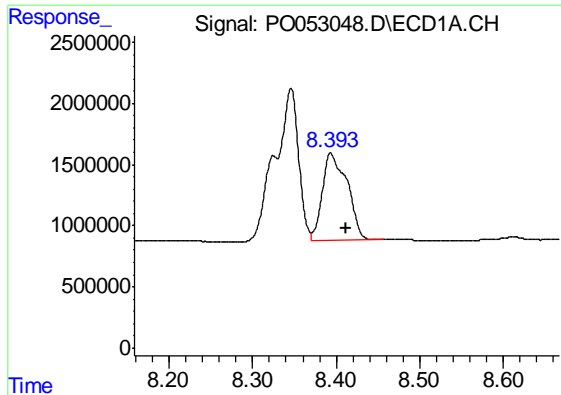
#41 AR-1268-1

R.T.: 8.346 min
Delta R.T.: 0.020 min
Response: 24909794
Conc: 226.00 ng/ml



#41 AR-1268-1

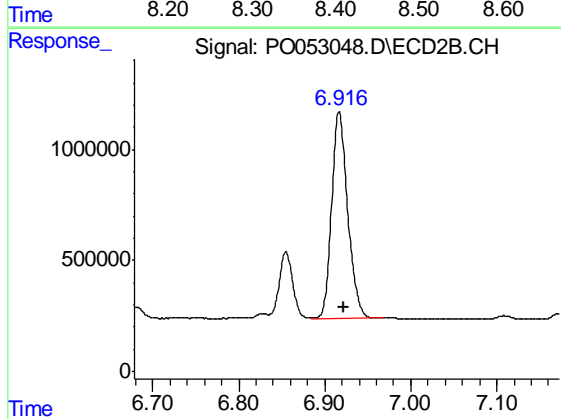
R.T.: 6.855 min
Delta R.T.: -0.003 min
Response: 3252564
Conc: 77.06 ng/ml



#42 AR-1268-2

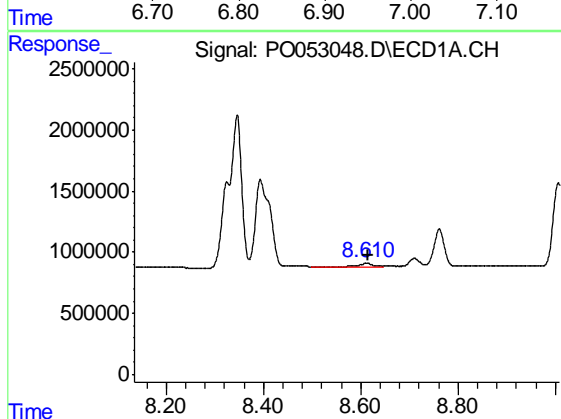
R.T.: 8.393 min
 Delta R.T.: -0.019 min
 Response: 14848784
 Conc: 144.67 ng/ml

Instrument :
 ECD_O
 ClientSampleId :
 P001-SS021-0006-01DL



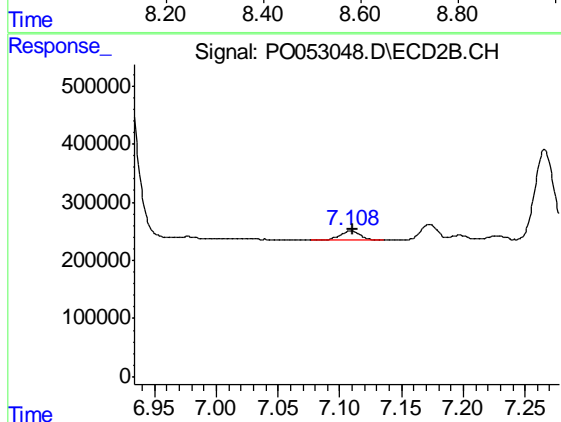
#42 AR-1268-2

R.T.: 6.917 min
 Delta R.T.: -0.005 min
 Response: 12048252
 Conc: 301.20 ng/ml



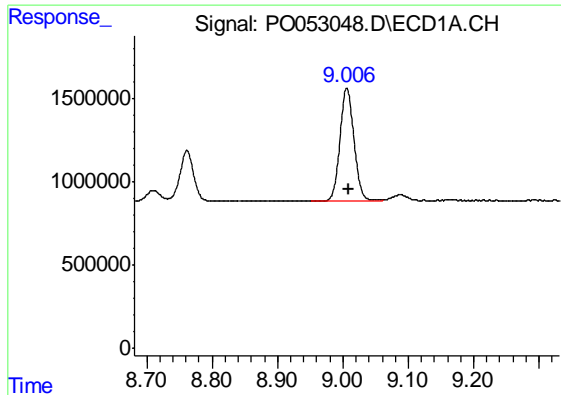
#43 AR-1268-3

R.T.: 8.611 min
 Delta R.T.: -0.003 min
 Response: 367651
 Conc: 4.08 ng/ml



#43 AR-1268-3

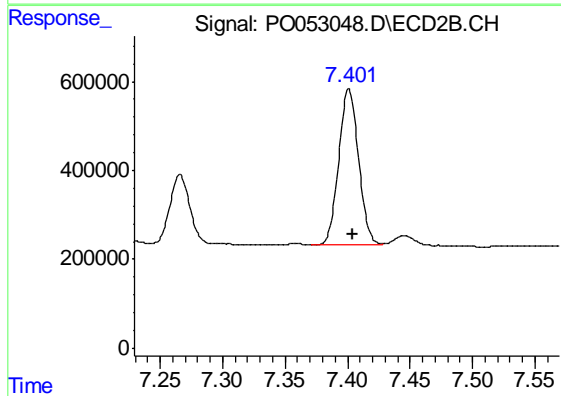
R.T.: 7.109 min
 Delta R.T.: -0.002 min
 Response: 175283
 Conc: 5.13 ng/ml



#44 AR-1268-4

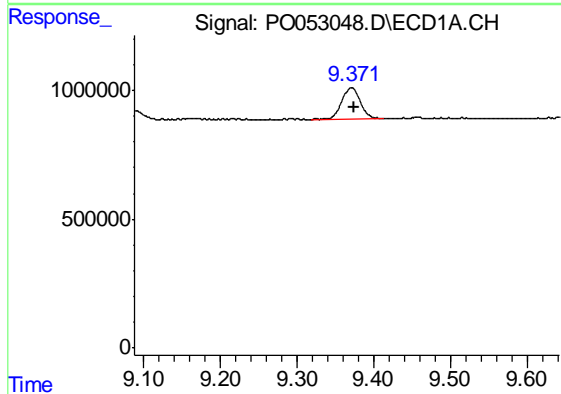
R.T.: 9.006 min
 Delta R.T.: -0.003 min
 Response: 10095729
 Conc: 281.36 ng/ml

Instrument :
 ECD_O
 ClientSampleId :
 P001-SS021-0006-01DL



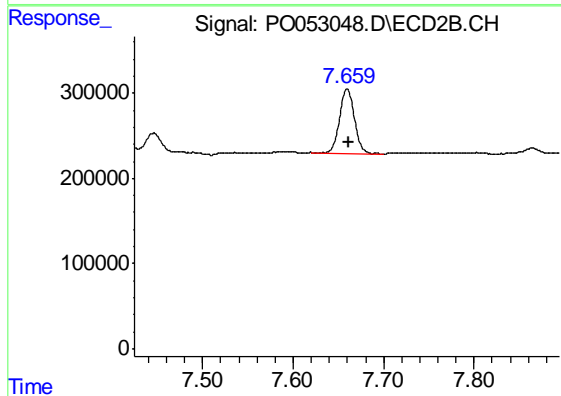
#44 AR-1268-4

R.T.: 7.401 min
 Delta R.T.: -0.002 min
 Response: 3877541
 Conc: 279.93 ng/ml



#45 AR-1268-5

R.T.: 9.371 min
 Delta R.T.: -0.002 min
 Response: 2040021
 Conc: 7.55 ng/ml



#45 AR-1268-5

R.T.: 7.660 min
 Delta R.T.: -0.001 min
 Response: 868328
 Conc: 8.63 ng/ml