

Data Path : Z:\pestpcbsrv\HPCHEM1\ECD_0\Data\PO122918\
 Data File : PO053081.D
 Signal(s) : Signal #1: ECD1A.CH Signal #2: ECD2B.CH
 Acq On : 29 Dec 2018 1:52
 Operator : SM/SJ
 Sample : I.BLK
 Misc :
 ALS Vial : 2 Sample Multiplier: 1

Instrument :
 ECD_0
 ClientSampleId :
 I.BLK

Integration File signal 1: autoint1.e
 Integration File signal 2: autoint2.e
 Quant Time: Dec 29 02:58:35 2018
 Quant Method : Z:\pestpcbsrv\HPCHEM1\ECD_0\methods\PO122818.M
 Quant Title : GC EXTRACTABLES
 QLast Update : Fri Dec 28 04:30:51 2018
 Response via : Initial Calibration
 Integrator: ChemStation 6890 Scale Mode: Small noise peaks clipped

Volume Inj. : 2 µl
 Signal #1 Phase : ZB-MR1 Signal #2 Phase: ZB-MR2
 Signal #1 Info : 30Mx0.32mmx 0.50µ Signal #2 Info : 30M x 0.32mm x 0.25µm

Compound	RT#1	RT#2	Resp#1	Resp#2	ng/ml	ng/ml

System Monitoring Compounds						
1) SA Tetrachlo...	4.184	3.216	24536730	4086899	25.291	21.048
2) SA Decachlor...	9.661	7.864	11927523	4654646	19.338	21.584

Target Compounds

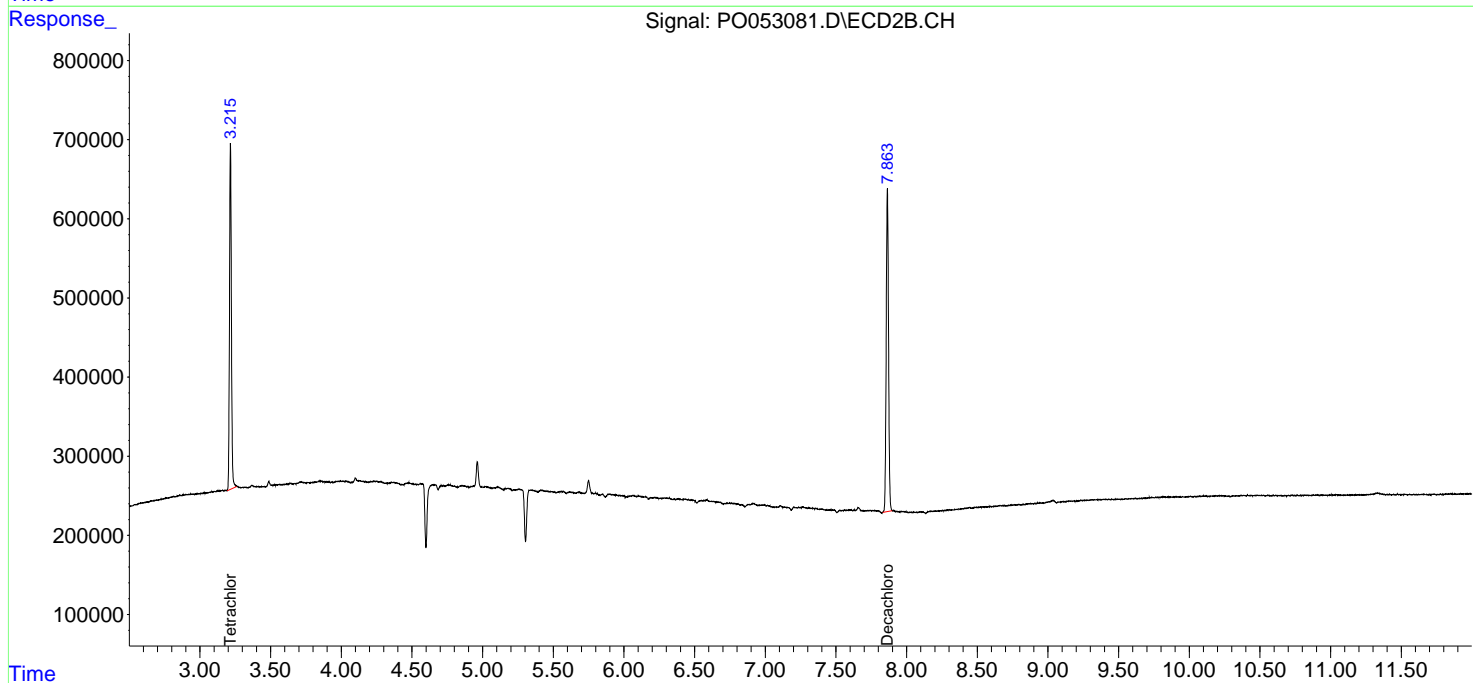
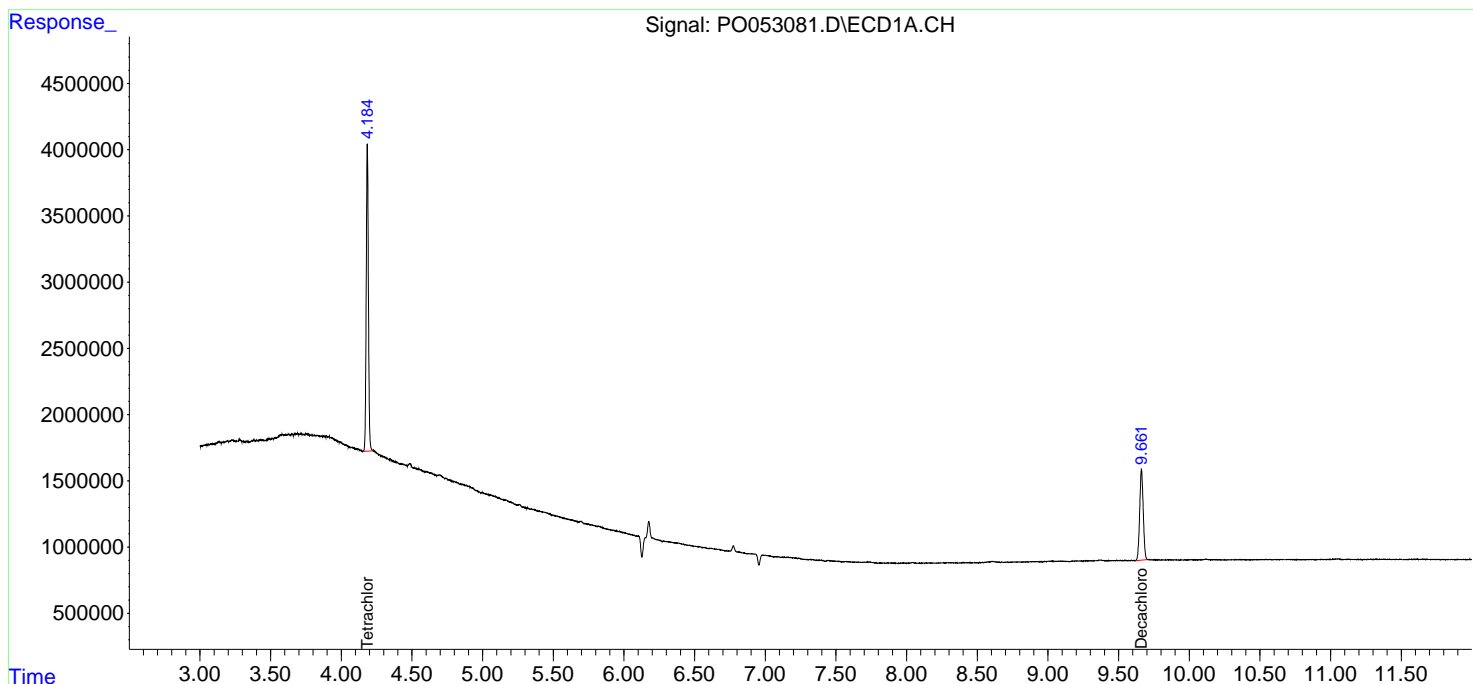
(f)=RT Delta > 1/2 Window (#)=Amounts differ by > 25% (m)=manual int.

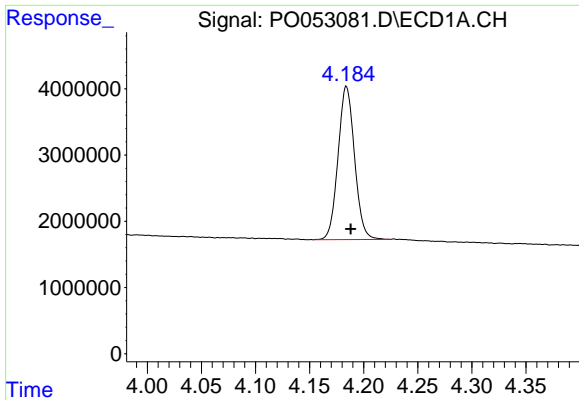
Data Path : Z:\pestpcbsrv\HPCHEM1\ECD_0\Data\PO122918\
 Data File : PO053081.D
 Signal(s) : Signal #1: ECD1A.CH Signal #2: ECD2B.CH
 Acq On : 29 Dec 2018 1:52
 Operator : SM/SJ
 Sample : I.BLK
 Misc :
 ALS Vial : 2 Sample Multiplier: 1

Instrument :
 ECD_O
 ClientSampled :
 I.BLK

Integration File signal 1: autoint1.e
 Integration File signal 2: autoint2.e
 Quant Time: Dec 29 02:58:35 2018
 Quant Method : Z:\pestpcbsrv\HPCHEM1\ECD_0\methods\PO122818.M
 Quant Title : GC EXTRACTABLES
 QLast Update : Fri Dec 28 04:30:51 2018
 Response via : Initial Calibration
 Integrator: ChemStation 6890 Scale Mode: Small noise peaks clipped

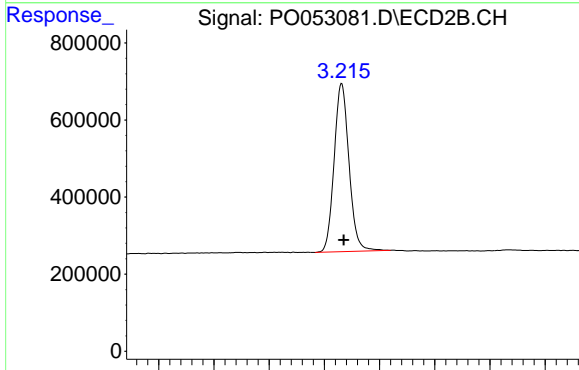
Volume Inj. : 2 µl
 Signal #1 Phase : ZB-MR1 Signal #2 Phase: ZB-MR2
 Signal #1 Info : 30Mx0.32mmx 0.50µ Signal #2 Info : 30M x 0.32mm x 0.25µm



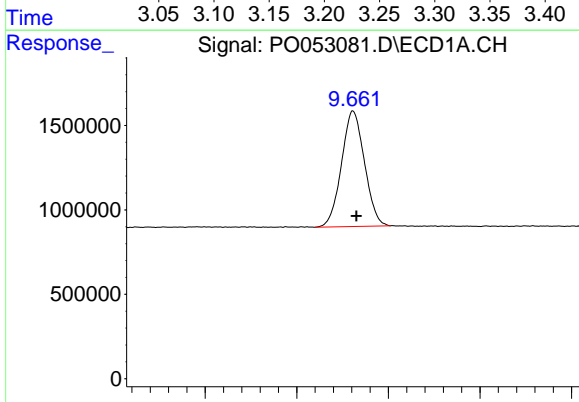


#1 Tetrachloro-m-xylene
 R.T.: 4.184 min
 Delta R.T.: -0.004 min
 Response: 24536730
 Conc: 25.29 ng/ml

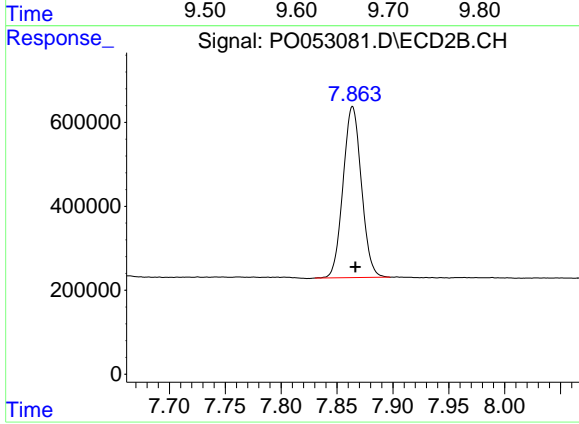
Instrument :
 ECD_O
 ClientSampleId :
 I.BLK



#1 Tetrachloro-m-xylene
 R.T.: 3.216 min
 Delta R.T.: -0.002 min
 Response: 4086899
 Conc: 21.05 ng/ml



#2 Decachlorobiphenyl
 R.T.: 9.661 min
 Delta R.T.: -0.004 min
 Response: 11927523
 Conc: 19.34 ng/ml



#2 Decachlorobiphenyl
 R.T.: 7.864 min
 Delta R.T.: -0.003 min
 Response: 4654646
 Conc: 21.58 ng/ml