

Data Path : Z:\pestpcbsrv\HPCHEM1\ECD_0\Data\PO122922\
 Data File : PO091731.D
 Signal(s) : Signal #1: ECD1A.ch Signal #2: ECD2B.ch
 Acq On : 29 Dec 2022 13:04
 Operator : YP/AJ
 Sample : N6225-01
 Misc :
 ALS Vial : 15 Sample Multiplier: 1

Instrument :
 ECD_0
 ClientSampleId :
 EO-03-122822

Integration File signal 1: autoint1.e
 Integration File signal 2: autoint2.e
 Quant Time: Dec 29 22:15:47 2022
 Quant Method : Z:\pestpcbsrv\HPCHEM1\ECD_0\methods\PO122122.M
 Quant Title : GC EXTRACTABLES
 QLast Update : Thu Dec 22 03:53:05 2022
 Response via : Initial Calibration
 Integrator: ChemStation

Volume Inj. : 2 µl
 Signal #1 Phase : ZB-MR1 Signal #2 Phase: ZB-MR2
 Signal #1 Info : 30Mx0.32mmx 0.50µ Signal #2 Info : 30M x 0.32mm x 0.25µm

Compound	RT#1	RT#2	Resp#1	Resp#2	ng/ml	ng/ml

System Monitoring Compounds						
1) SA Tetrachlo...	4.289	3.467	49254723	20703376	18.129	20.416
2) SA Decachlor...	10.027	8.461	39259836	18063970	20.864	20.705

Target Compounds

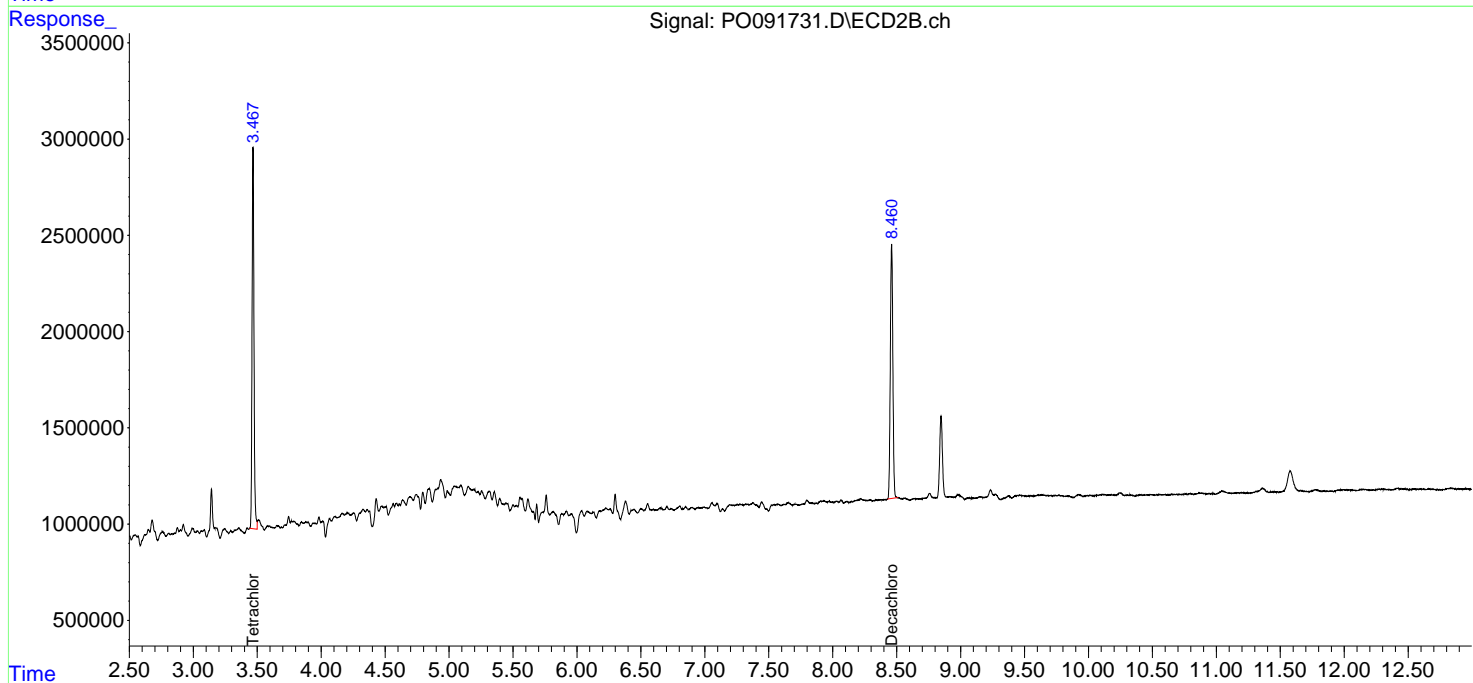
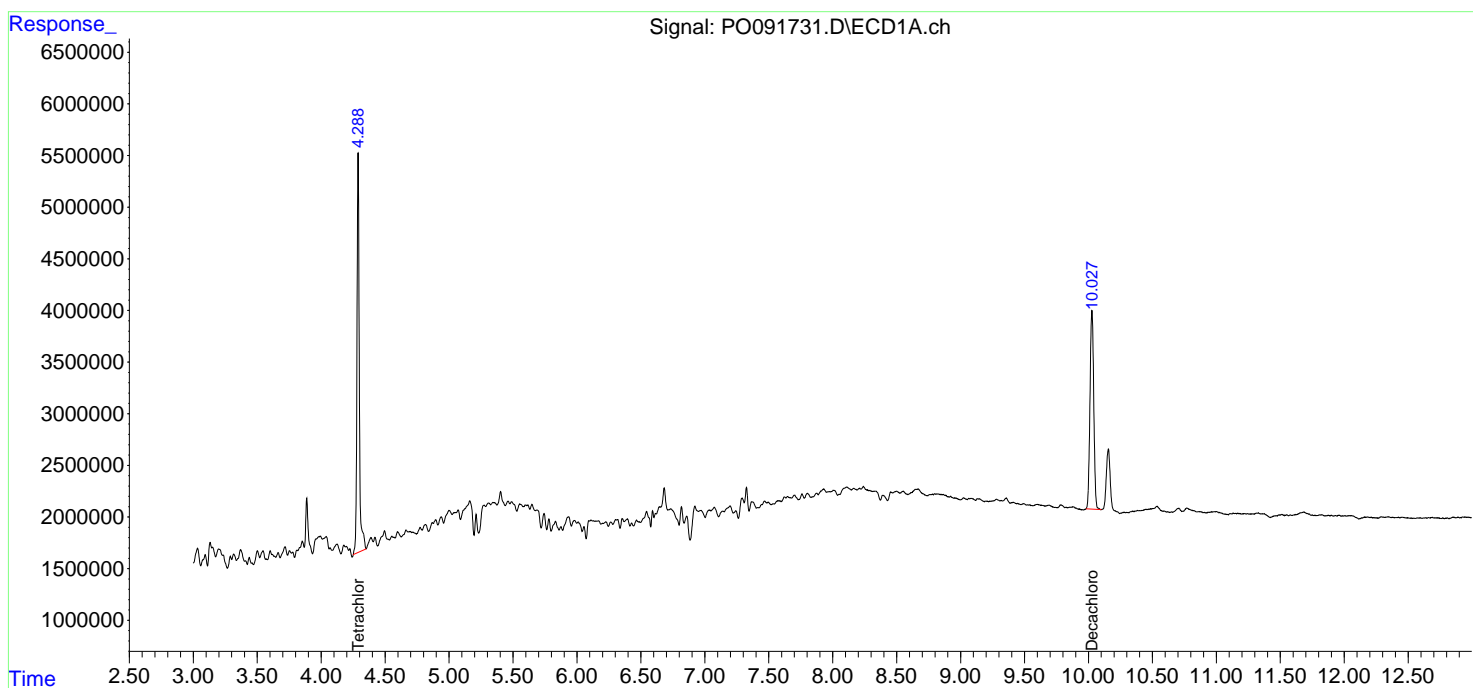
 (f)=RT Delta > 1/2 Window (#)=Amounts differ by > 25% (m)=manual int.

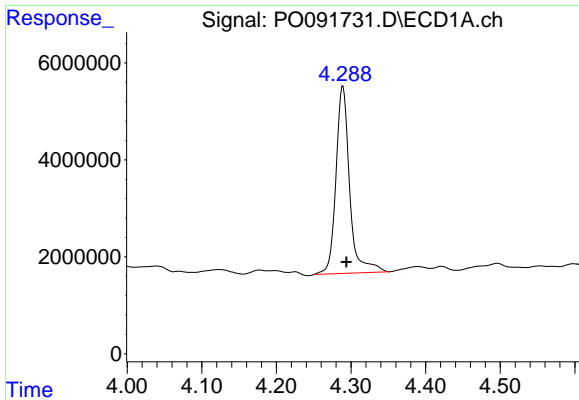
Data Path : Z:\pestpcbsrv\HPCHEM1\ECD_O\Data\PO122922\
 Data File : PO091731.D
 Signal(s) : Signal #1: ECD1A.ch Signal #2: ECD2B.ch
 Acq On : 29 Dec 2022 13:04
 Operator : YP/AJ
 Sample : N6225-01
 Misc :
 ALS Vial : 15 Sample Multiplier: 1

Instrument :
 ECD_O
 ClientSampleId :
 EO-03-122822

Integration File signal 1: autoint1.e
 Integration File signal 2: autoint2.e
 Quant Time: Dec 29 22:15:47 2022
 Quant Method : Z:\pestpcbsrv\HPCHEM1\ECD_O\methods\PO122122.M
 Quant Title : GC EXTRACTABLES
 QLast Update : Thu Dec 22 03:53:05 2022
 Response via : Initial Calibration
 Integrator: ChemStation

Volume Inj. : 2 µl
 Signal #1 Phase : ZB-MR1 Signal #2 Phase: ZB-MR2
 Signal #1 Info : 30Mx0.32mmx 0.50µ Signal #2 Info : 30M x 0.32mm x 0.25µm

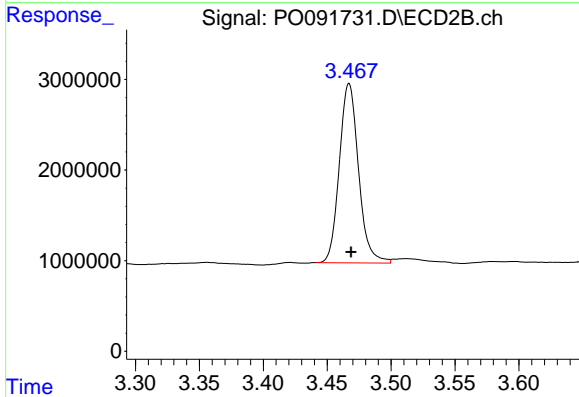




#1 Tetrachloro-m-xylene

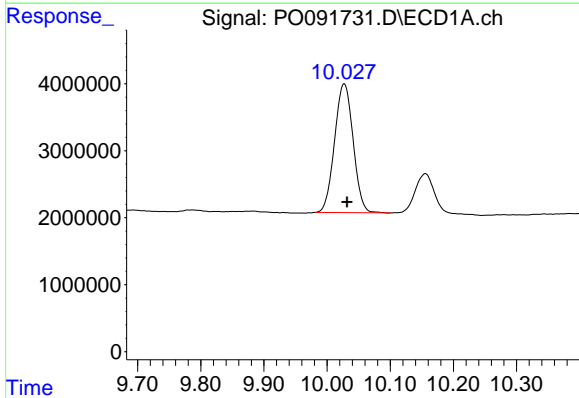
R.T.: 4.289 min
 Delta R.T.: -0.005 min
 Response: 49254723
 Conc: 18.13 ng/ml

Instrument :
 ECD_O
 ClientSampleId :
 EO-03-122822



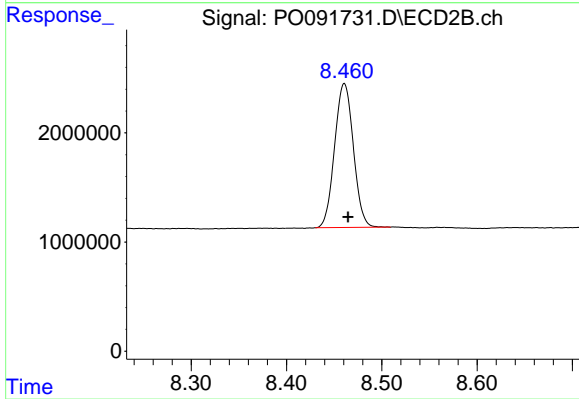
#1 Tetrachloro-m-xylene

R.T.: 3.467 min
 Delta R.T.: -0.002 min
 Response: 20703376
 Conc: 20.42 ng/ml



#2 Decachlorobiphenyl

R.T.: 10.027 min
 Delta R.T.: -0.004 min
 Response: 39259836
 Conc: 20.86 ng/ml



#2 Decachlorobiphenyl

R.T.: 8.461 min
 Delta R.T.: -0.004 min
 Response: 18063970
 Conc: 20.71 ng/ml