

Data Path : Z:\pestpcbsrv\HPCHEM1\ECD\_0\Data\PO122922\  
 Data File : PO091735.D  
 Signal(s) : Signal #1: ECD1A.ch Signal #2: ECD2B.ch  
 Acq On : 29 Dec 2022 15:02  
 Operator : YP/AJ  
 Sample : AR1660CCC500  
 Misc :  
 ALS Vial : 3 Sample Multiplier: 1

Instrument :  
 ECD\_0  
 ClientSampleId :  
 AR1660CCC500

Integration File signal 1: autoint1.e  
 Integration File signal 2: autoint2.e  
 Quant Time: Dec 29 22:19:55 2022  
 Quant Method : Z:\pestpcbsrv\HPCHEM1\ECD\_0\methods\PO122122.M  
 Quant Title : GC EXTRACTABLES  
 QLast Update : Thu Dec 22 03:53:05 2022  
 Response via : Initial Calibration  
 Integrator: ChemStation

Volume Inj. : 2 µl  
 Signal #1 Phase : ZB-MR1 Signal #2 Phase: ZB-MR2  
 Signal #1 Info : 30Mx0.32mmx 0.50µ Signal #2 Info : 30M x 0.32mm x 0.25µm

Compound	RT#1	RT#2	Resp#1	Resp#2	ng/ml	ng/ml
-----						
System Monitoring Compounds						
1) SA Tetrachlo...	4.289	3.466	118.0E6	48475583	43.438	47.804
2) SA Decachlor...	10.027	8.461	82790773	42220142	43.997	48.394
Target Compounds						
3) L1 AR-1016-1	5.464	4.550	38762022	17584973	431.143	508.079
4) L1 AR-1016-2	5.486	4.568	54841347	24845418	425.202	504.307
5) L1 AR-1016-3	5.549	4.743	34726953	13617568	438.168	519.182
6) L1 AR-1016-4	5.647	4.787	27283460	11401128	442.984	515.789
7) L1 AR-1016-5	5.944	4.999	27892936	15372653	442.633	565.009 #
31) L7 AR-1260-1	7.078	6.036	51005161	27459781	452.352	519.659
32) L7 AR-1260-2	7.337	6.226	56971723	32125340	416.193	502.583
33) L7 AR-1260-3	7.699	6.378	36094040	29794365	441.904	446.096
34) L7 AR-1260-4	7.925	6.851	42890331	21495446	415.729	507.774
35) L7 AR-1260-5	8.241	7.096	77458339	48186308	410.729	496.053

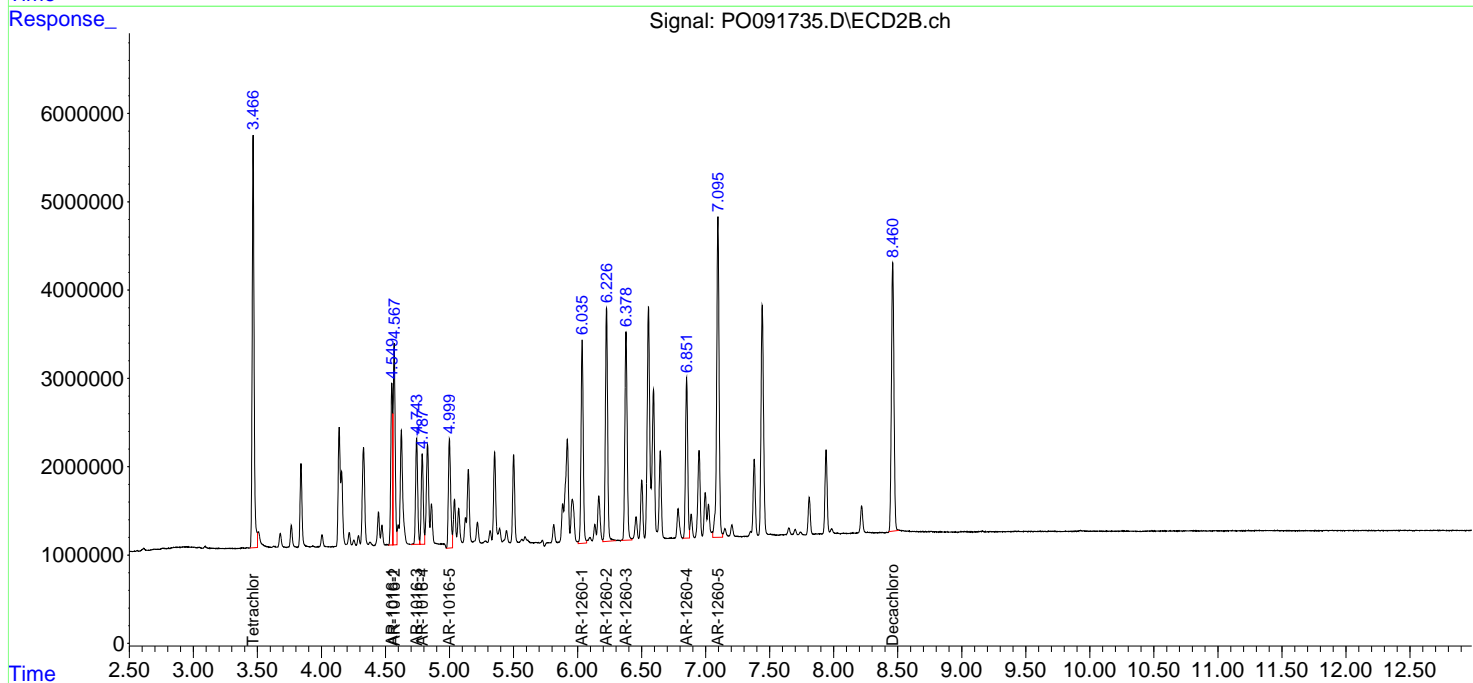
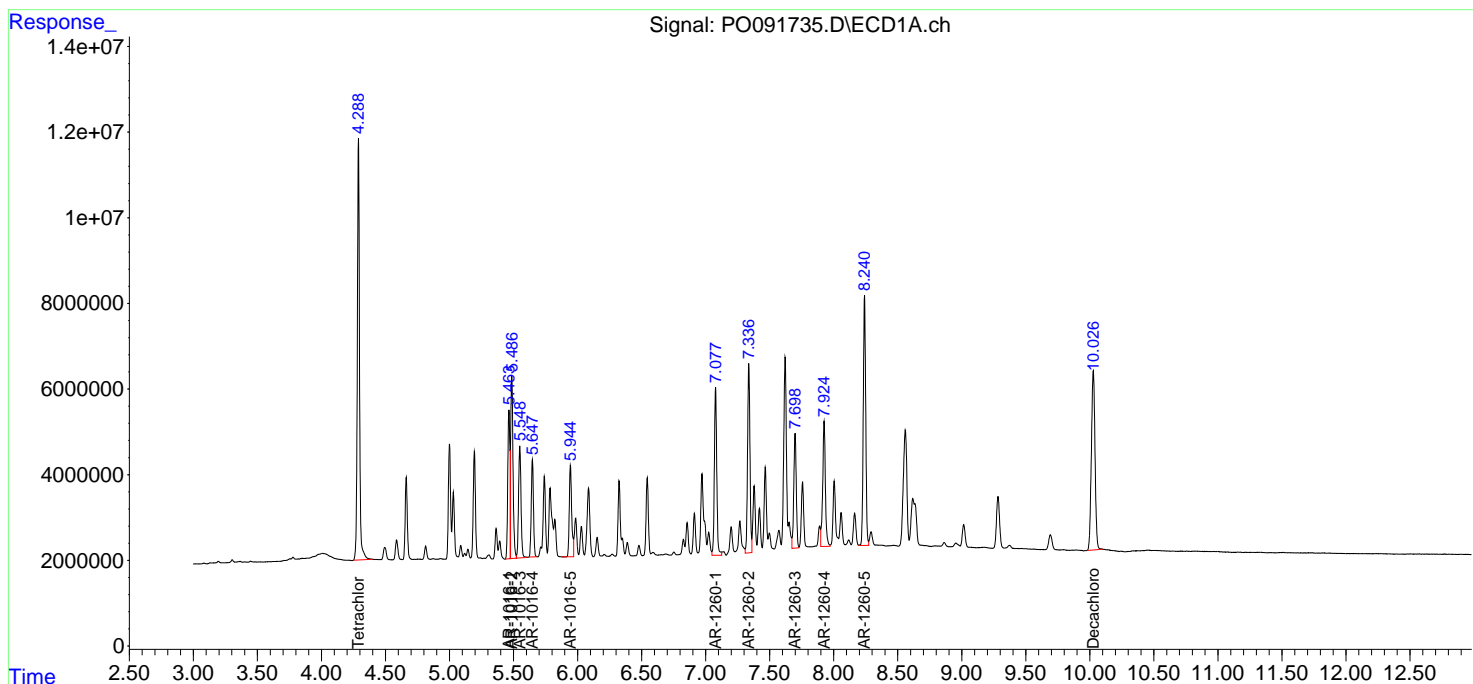
(f)=RT Delta > 1/2 Window (#)=Amounts differ by > 25% (m)=manual int.

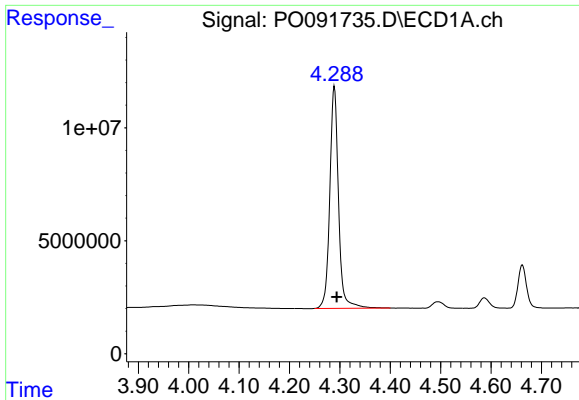
Data Path : Z:\pestpcbsrv\HPCHEM1\ECD\_O\Data\PO122922\  
 Data File : P0091735.D  
 Signal(s) : Signal #1: ECD1A.ch Signal #2: ECD2B.ch  
 Acq On : 29 Dec 2022 15:02  
 Operator : YP/AJ  
 Sample : AR1660CCC500  
 Misc :  
 ALS Vial : 3 Sample Multiplier: 1

Instrument :  
 ECD\_O  
 ClientSampleId :  
 AR1660CCC500

Integration File signal 1: autoint1.e  
 Integration File signal 2: autoint2.e  
 Quant Time: Dec 29 22:19:55 2022  
 Quant Method : Z:\pestpcbsrv\HPCHEM1\ECD\_O\methods\PO122122.M  
 Quant Title : GC EXTRACTABLES  
 QLast Update : Thu Dec 22 03:53:05 2022  
 Response via : Initial Calibration  
 Integrator: ChemStation

Volume Inj. : 2 µl  
 Signal #1 Phase : ZB-MR1 Signal #2 Phase: ZB-MR2  
 Signal #1 Info : 30Mx0.32mmx 0.50µ Signal #2 Info : 30M x 0.32mm x 0.25µm

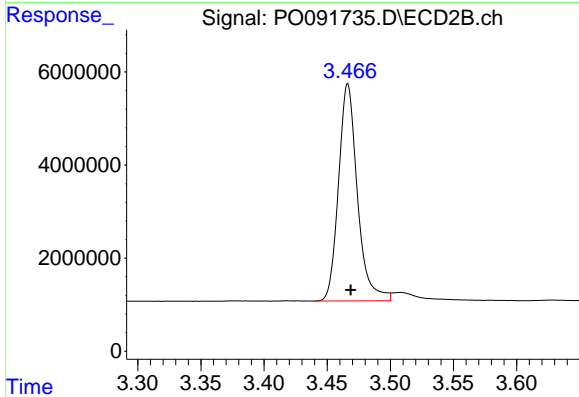




#1 Tetrachloro-m-xylene

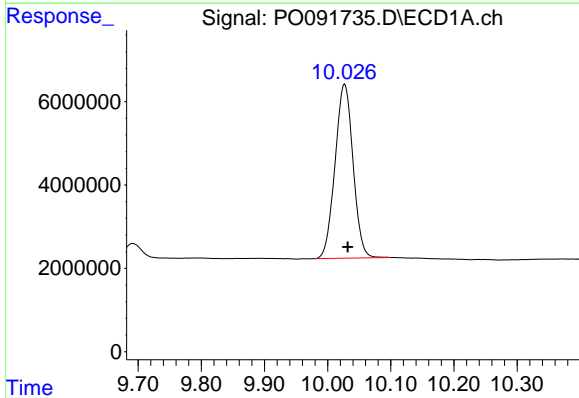
R.T.: 4.289 min  
Delta R.T.: -0.005 min  
Response: 118015264  
Conc: 43.44 ng/ml

Instrument :  
ECD\_O  
ClientSampleId :  
AR1660CCC500



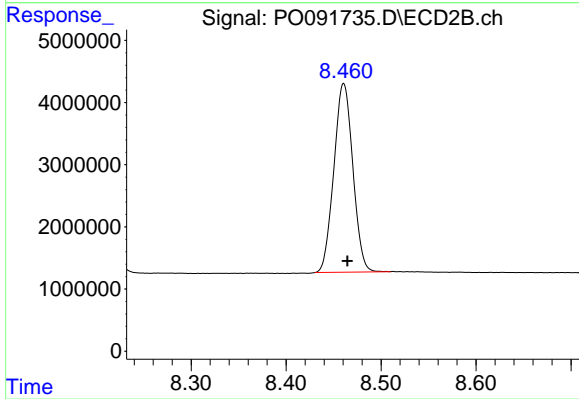
#1 Tetrachloro-m-xylene

R.T.: 3.466 min  
Delta R.T.: -0.002 min  
Response: 48475583  
Conc: 47.80 ng/ml



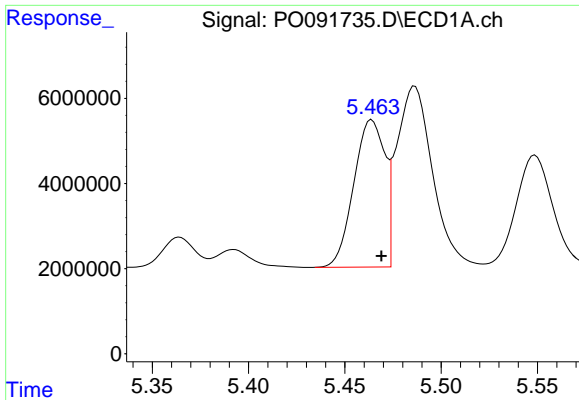
#2 Decachlorobiphenyl

R.T.: 10.027 min  
Delta R.T.: -0.005 min  
Response: 82790773  
Conc: 44.00 ng/ml



#2 Decachlorobiphenyl

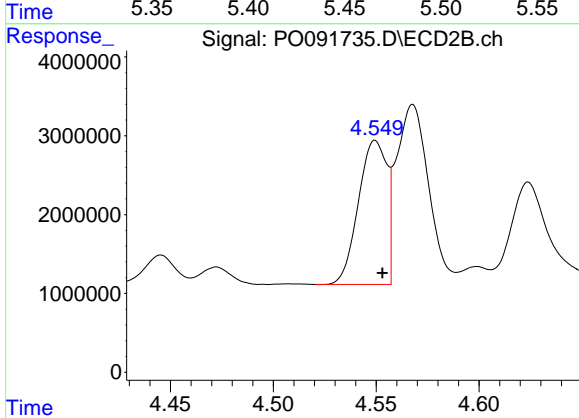
R.T.: 8.461 min  
Delta R.T.: -0.004 min  
Response: 42220142  
Conc: 48.39 ng/ml



#3 AR-1016-1

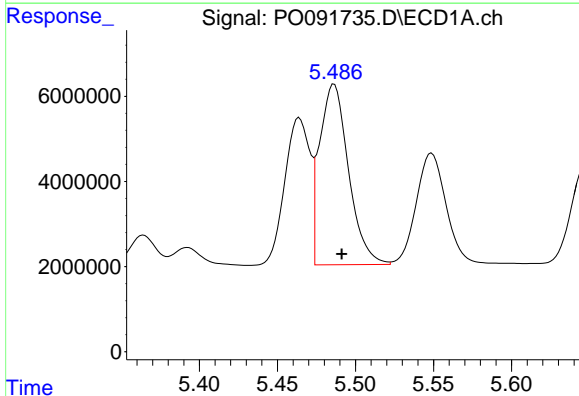
R.T.: 5.464 min  
 Delta R.T.: -0.005 min  
 Response: 38762022  
 Conc: 431.14 ng/ml

Instrument :  
 ECD\_O  
 ClientSampleId :  
 AR1660CCC500



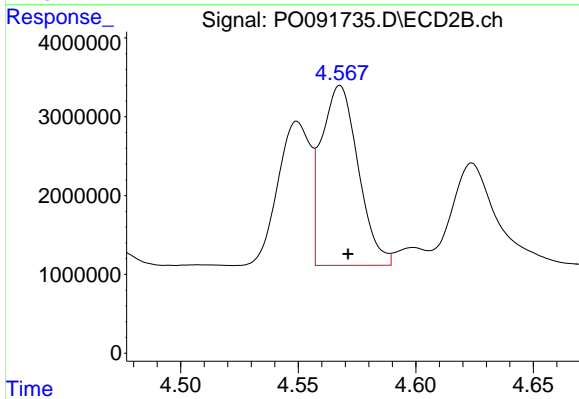
#3 AR-1016-1

R.T.: 4.550 min  
 Delta R.T.: -0.003 min  
 Response: 17584973  
 Conc: 508.08 ng/ml



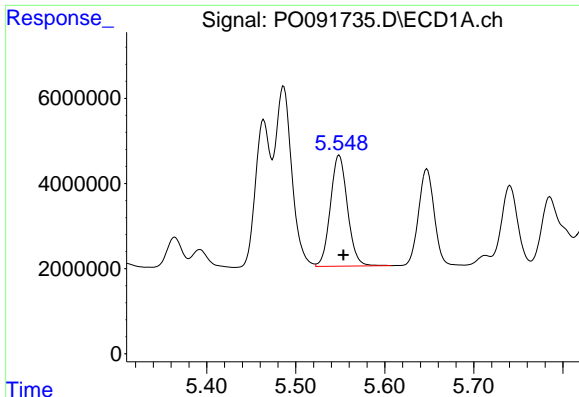
#4 AR-1016-2

R.T.: 5.486 min  
 Delta R.T.: -0.005 min  
 Response: 54841347  
 Conc: 425.20 ng/ml



#4 AR-1016-2

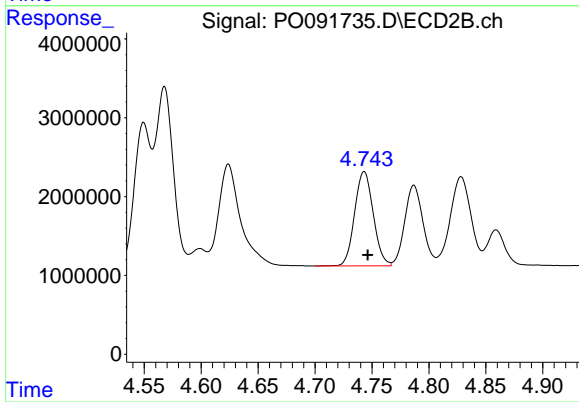
R.T.: 4.568 min  
 Delta R.T.: -0.003 min  
 Response: 24845418  
 Conc: 504.31 ng/ml



#5 AR-1016-3

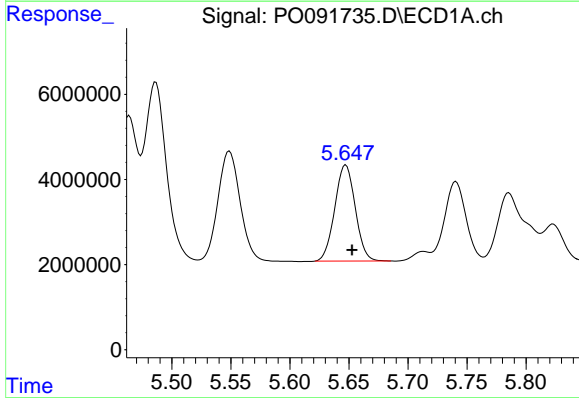
R.T.: 5.549 min  
Delta R.T.: -0.005 min  
Response: 34726953  
Conc: 438.17 ng/ml

Instrument :  
ECD\_O  
ClientSampleId :  
AR1660CCC500



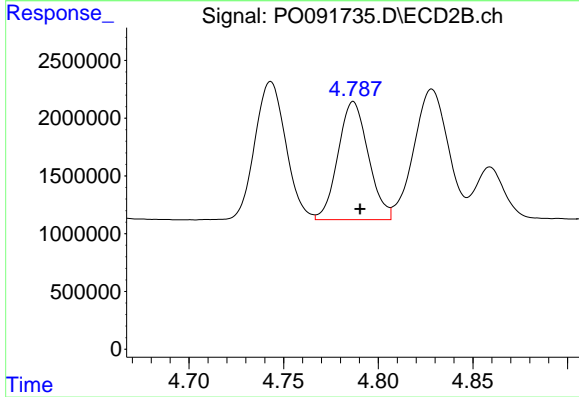
#5 AR-1016-3

R.T.: 4.743 min  
Delta R.T.: -0.003 min  
Response: 13617568  
Conc: 519.18 ng/ml



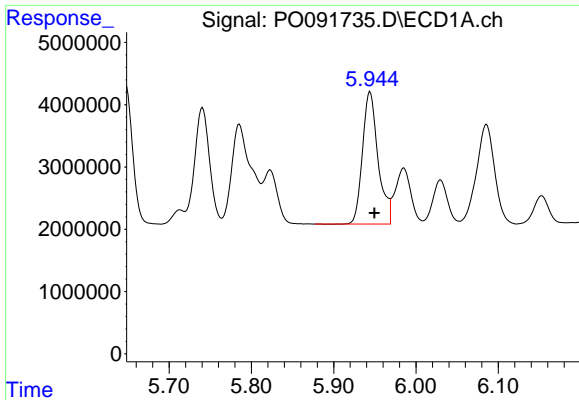
#6 AR-1016-4

R.T.: 5.647 min  
Delta R.T.: -0.005 min  
Response: 27283460  
Conc: 442.98 ng/ml



#6 AR-1016-4

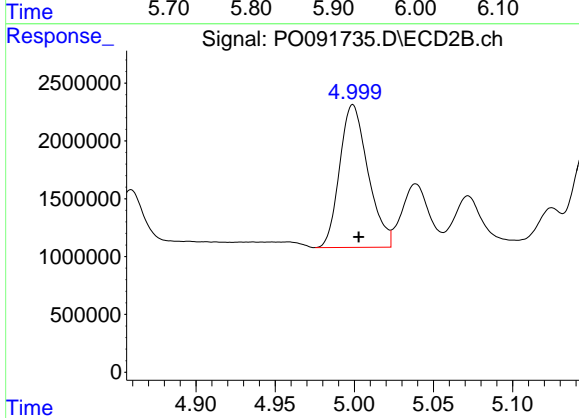
R.T.: 4.787 min  
Delta R.T.: -0.004 min  
Response: 11401128  
Conc: 515.79 ng/ml



#7 AR-1016-5

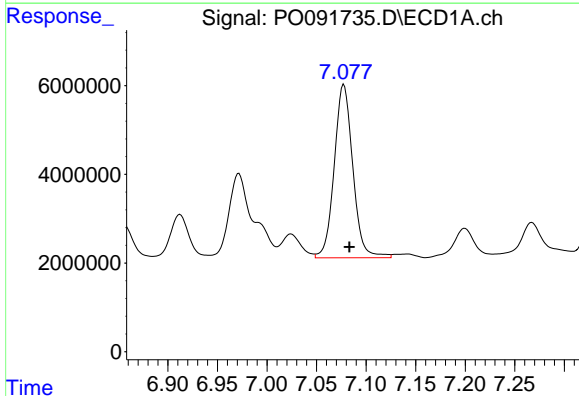
R.T.: 5.944 min  
 Delta R.T.: -0.005 min  
 Response: 27892936  
 Conc: 442.63 ng/ml

Instrument :  
 ECD\_O  
 ClientSampleId :  
 AR1660CCC500



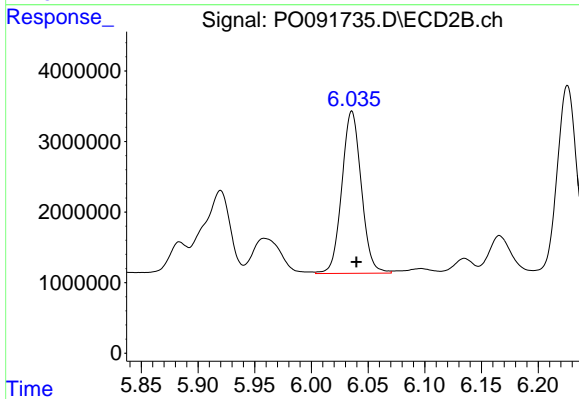
#7 AR-1016-5

R.T.: 4.999 min  
 Delta R.T.: -0.004 min  
 Response: 15372653  
 Conc: 565.01 ng/ml



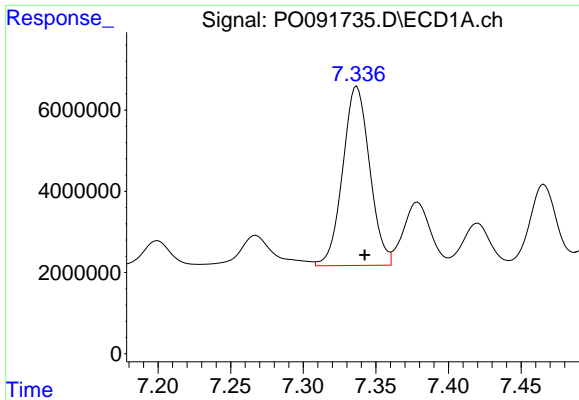
#31 AR-1260-1

R.T.: 7.078 min  
 Delta R.T.: -0.006 min  
 Response: 51005161  
 Conc: 452.35 ng/ml



#31 AR-1260-1

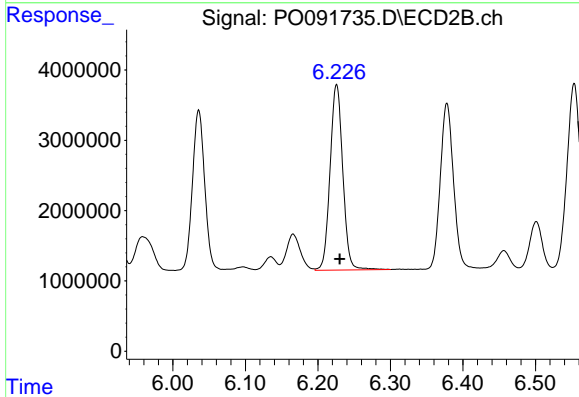
R.T.: 6.036 min  
 Delta R.T.: -0.004 min  
 Response: 27459781  
 Conc: 519.66 ng/ml



#32 AR-1260-2

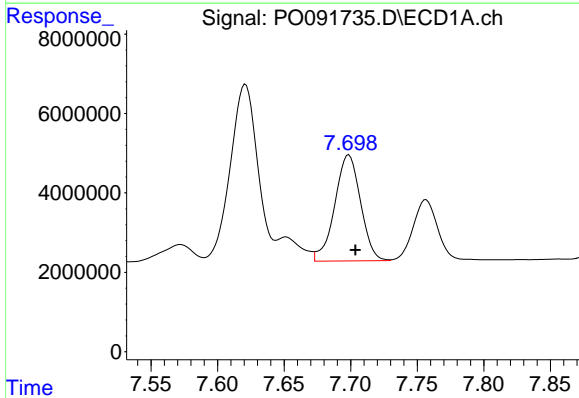
R.T.: 7.337 min  
 Delta R.T.: -0.006 min  
 Response: 56971723  
 Conc: 416.19 ng/ml

Instrument :  
 ECD\_O  
 ClientSampleId :  
 AR1660CCC500



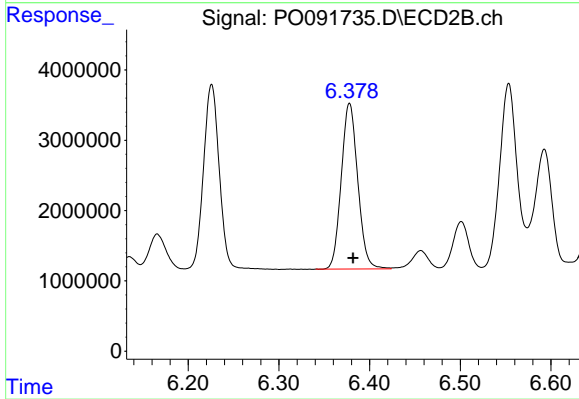
#32 AR-1260-2

R.T.: 6.226 min  
 Delta R.T.: -0.004 min  
 Response: 32125340  
 Conc: 502.58 ng/ml



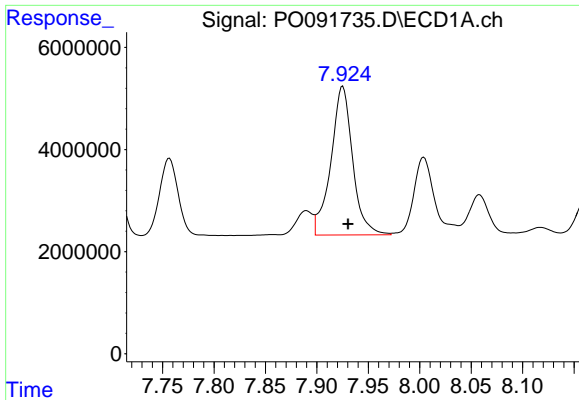
#33 AR-1260-3

R.T.: 7.699 min  
 Delta R.T.: -0.005 min  
 Response: 36094040  
 Conc: 441.90 ng/ml



#33 AR-1260-3

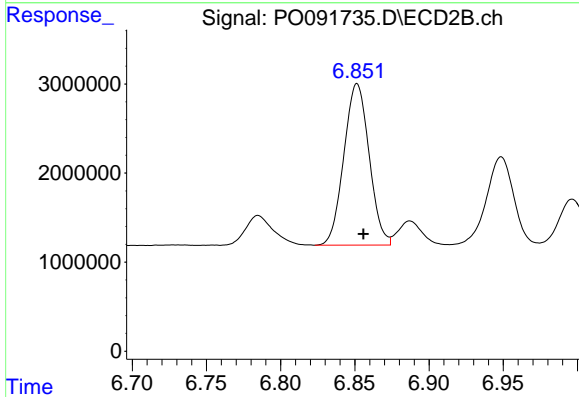
R.T.: 6.378 min  
 Delta R.T.: -0.004 min  
 Response: 29794365  
 Conc: 446.10 ng/ml



#34 AR-1260-4

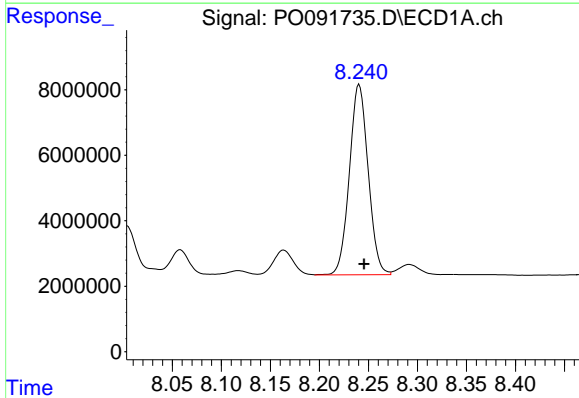
R.T.: 7.925 min  
 Delta R.T.: -0.005 min  
 Response: 42890331  
 Conc: 415.73 ng/ml

Instrument :  
 ECD\_O  
 ClientSampleId :  
 AR1660CCC500



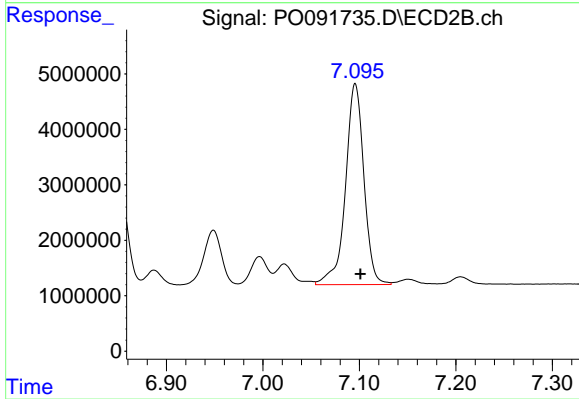
#34 AR-1260-4

R.T.: 6.851 min  
 Delta R.T.: -0.004 min  
 Response: 21495446  
 Conc: 507.77 ng/ml



#35 AR-1260-5

R.T.: 8.241 min  
 Delta R.T.: -0.005 min  
 Response: 77458339  
 Conc: 410.73 ng/ml



#35 AR-1260-5

R.T.: 7.096 min  
 Delta R.T.: -0.005 min  
 Response: 48186308  
 Conc: 496.05 ng/ml