

Data Path : Z:\pestpcbsrv\HPCHEM1\ECD_O\Data\P0071924\
 Data File : P0104861.D
 Signal(s) : Signal #1: ECD1A.ch Signal #2: ECD2B.ch
 Acq On : 19 Jul 2024 12:56
 Operator : YP/AJ
 Sample : I.BLK
 Misc :
 ALS Vial : 2 Sample Multiplier: 1

Instrument :
 ECD_O
 ClientSampleId :
 I.BLK

Integration File signal 1: autoint1.e
 Integration File signal 2: autoint2.e
 Quant Time: Jul 19 13:33:10 2024
 Quant Method : Z:\pestpcbsrv\HPCHEM1\ECD_O\methods\P0070224.M
 Quant Title : GC EXTRACTABLES
 QLast Update : Tue Jul 02 16:29:20 2024
 Response via : Initial Calibration
 Integrator: ChemStation

Volume Inj. : 2 µl
 Signal #1 Phase : ZB-MR1 Signal #2 Phase: ZB-MR2
 Signal #1 Info : 30Mx0.32mmx 0.50µ Signal #2 Info : 30M x 0.32mm x 0.25µm

Compound	RT#1	RT#2	Resp#1	Resp#2	ng/ml	ng/ml

System Monitoring Compounds						
1) SA Tetrachlo...	4.426	3.540	176.2E6	64855264	19.683	19.878
2) SA Decachlor...	10.212	8.435	118.2E6	39404376	19.270	18.790

Target Compounds

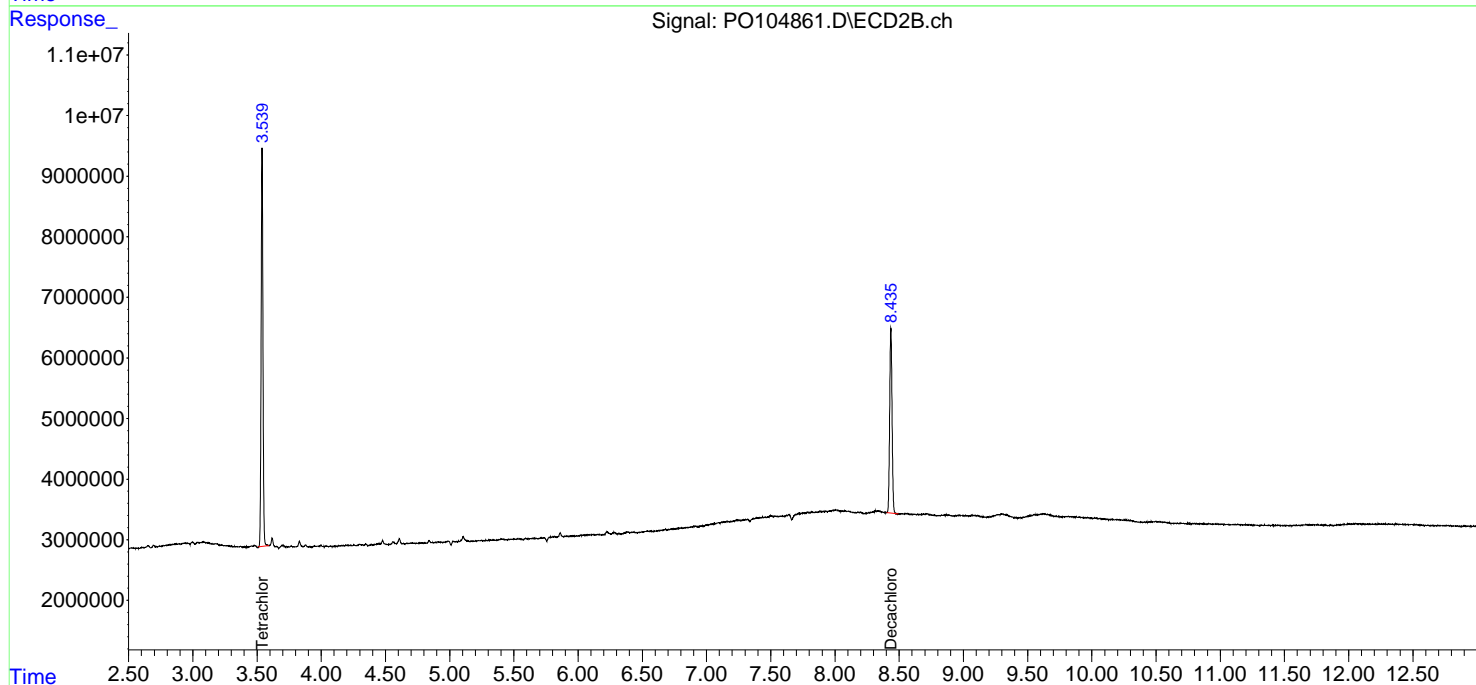
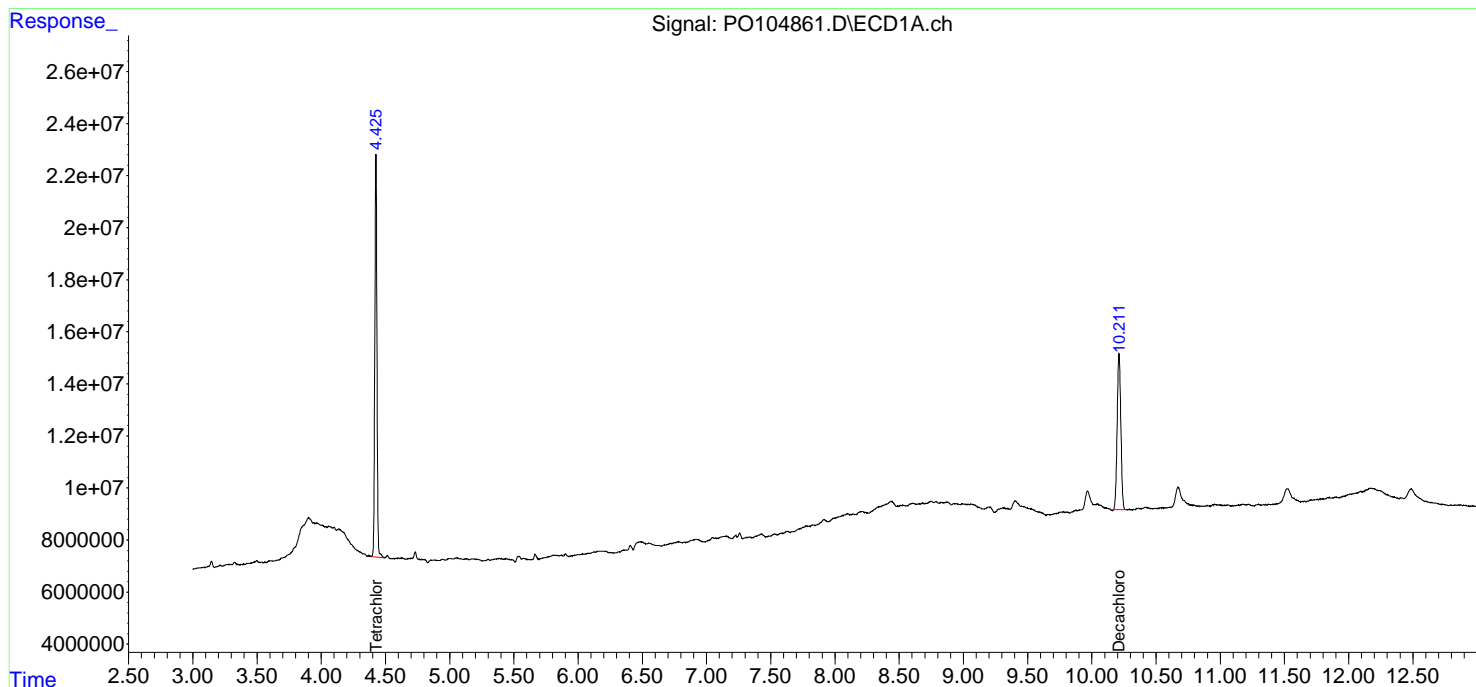
(f)=RT Delta > 1/2 Window (#)=Amounts differ by > 25% (m)=manual int.

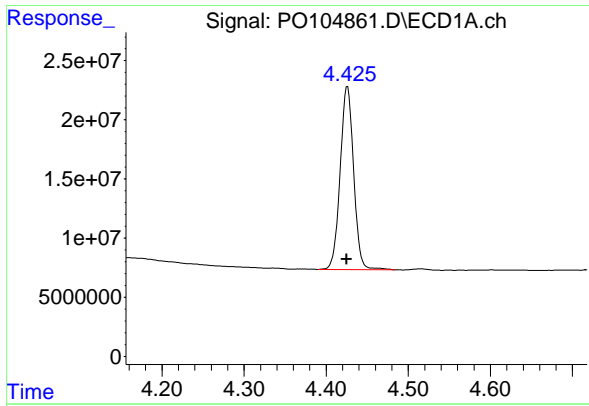
Data Path : Z:\pestpcbsrv\HPCHEM1\ECD_O\Data\PO071924\
 Data File : PO104861.D
 Signal(s) : Signal #1: ECD1A.ch Signal #2: ECD2B.ch
 Acq On : 19 Jul 2024 12:56
 Operator : YP/AJ
 Sample : I.BLK
 Misc :
 ALS Vial : 2 Sample Multiplier: 1

Instrument :
 ECD_O
 ClientSampleId :
 I.BLK

Integration File signal 1: autoint1.e
 Integration File signal 2: autoint2.e
 Quant Time: Jul 19 13:33:10 2024
 Quant Method : Z:\pestpcbsrv\HPCHEM1\ECD_O\methods\PO070224.M
 Quant Title : GC EXTRACTABLES
 QLast Update : Tue Jul 02 16:29:20 2024
 Response via : Initial Calibration
 Integrator: ChemStation

Volume Inj. : 2 µl
 Signal #1 Phase : ZB-MR1 Signal #2 Phase: ZB-MR2
 Signal #1 Info : 30Mx0.32mmx 0.50µ Signal #2 Info : 30M x 0.32mm x 0.25µm

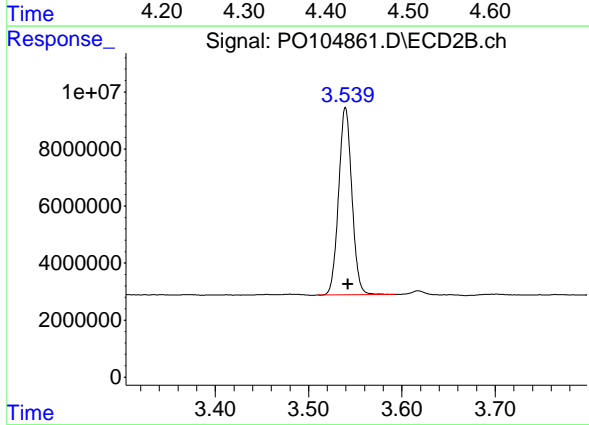




#1 Tetrachloro-m-xylene

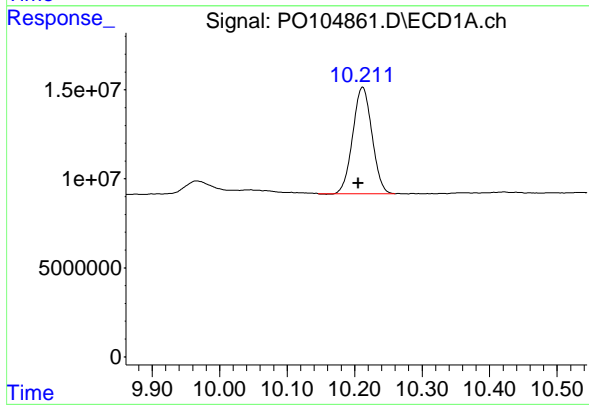
R.T.: 4.426 min
 Delta R.T.: 0.000 min
 Response: 176226267
 Conc: 19.68 ng/ml

Instrument :
 ECD_O
 ClientSampleId :
 I.BLK



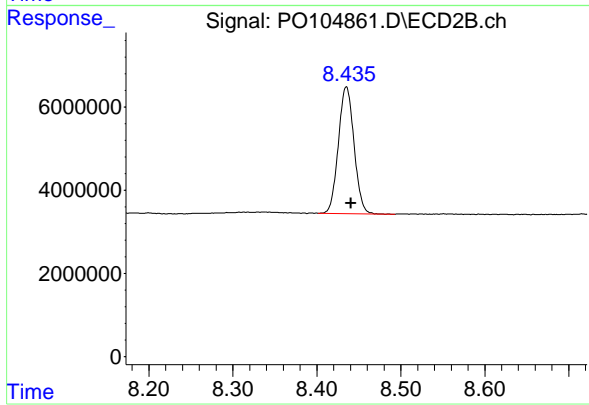
#1 Tetrachloro-m-xylene

R.T.: 3.540 min
 Delta R.T.: -0.002 min
 Response: 64855264
 Conc: 19.88 ng/ml



#2 Decachlorobiphenyl

R.T.: 10.212 min
 Delta R.T.: 0.006 min
 Response: 118172210
 Conc: 19.27 ng/ml



#2 Decachlorobiphenyl

R.T.: 8.435 min
 Delta R.T.: -0.006 min
 Response: 39404376
 Conc: 18.79 ng/ml