

Data Path : Z:\pestpcbsrv\HPCHEM1\ECD_O\Data\P0071924\
 Data File : P0104867.D
 Signal(s) : Signal #1: ECD1A.ch Signal #2: ECD2B.ch
 Acq On : 19 Jul 2024 14:40
 Operator : YP/AJ
 Sample : P3303-01
 Misc :
 ALS Vial : 14 Sample Multiplier: 1

Instrument :
 ECD_O
ClientSampleId :
 MIXED-DEMO

Manual Integrations
APPROVED
 Reviewed By :Yogesh Patel 07/22/2024
 Supervised By :Ankita Jodhani 07/22/2024

Integration File signal 1: autoint1.e
 Integration File signal 2: autoint2.e
 Quant Time: Jul 20 00:30:30 2024
 Quant Method : Z:\pestpcbsrv\HPCHEM1\ECD_O\methods\P0070224.M
 Quant Title : GC EXTRACTABLES
 QLast Update : Tue Jul 02 16:29:20 2024
 Response via : Initial Calibration
 Integrator: ChemStation

Volume Inj. : 2 µl
 Signal #1 Phase : ZB-MR1 Signal #2 Phase: ZB-MR2
 Signal #1 Info : 30Mx0.32mmx 0.50µ Signal #2 Info : 30M x 0.32mm x 0.25µm

Compound	RT#1	RT#2	Resp#1	Resp#2	ng/ml	ng/ml

System Monitoring Compounds						
1) SA Tetrachlo...	4.427	3.540	176.2E6	64873238	19.683	19.884
2) SA Decachlor...	10.211	8.436	116.6E6	39639072	19.014m	18.902

Target Compounds

(f)=RT Delta > 1/2 Window (#)=Amounts differ by > 25% (m)=manual int.

Data Path : Z:\pestpcbsrv\HPCHEM1\ECD_O\Data\PO071924\
 Data File : PO104867.D
 Signal(s) : Signal #1: ECD1A.ch Signal #2: ECD2B.ch
 Acq On : 19 Jul 2024 14:40
 Operator : YP/AJ
 Sample : P3303-01
 Misc :
 ALS Vial : 14 Sample Multiplier: 1

Instrument :

ECD_O

ClientSampleId :

MIXED-DEMO

Manual Integrations

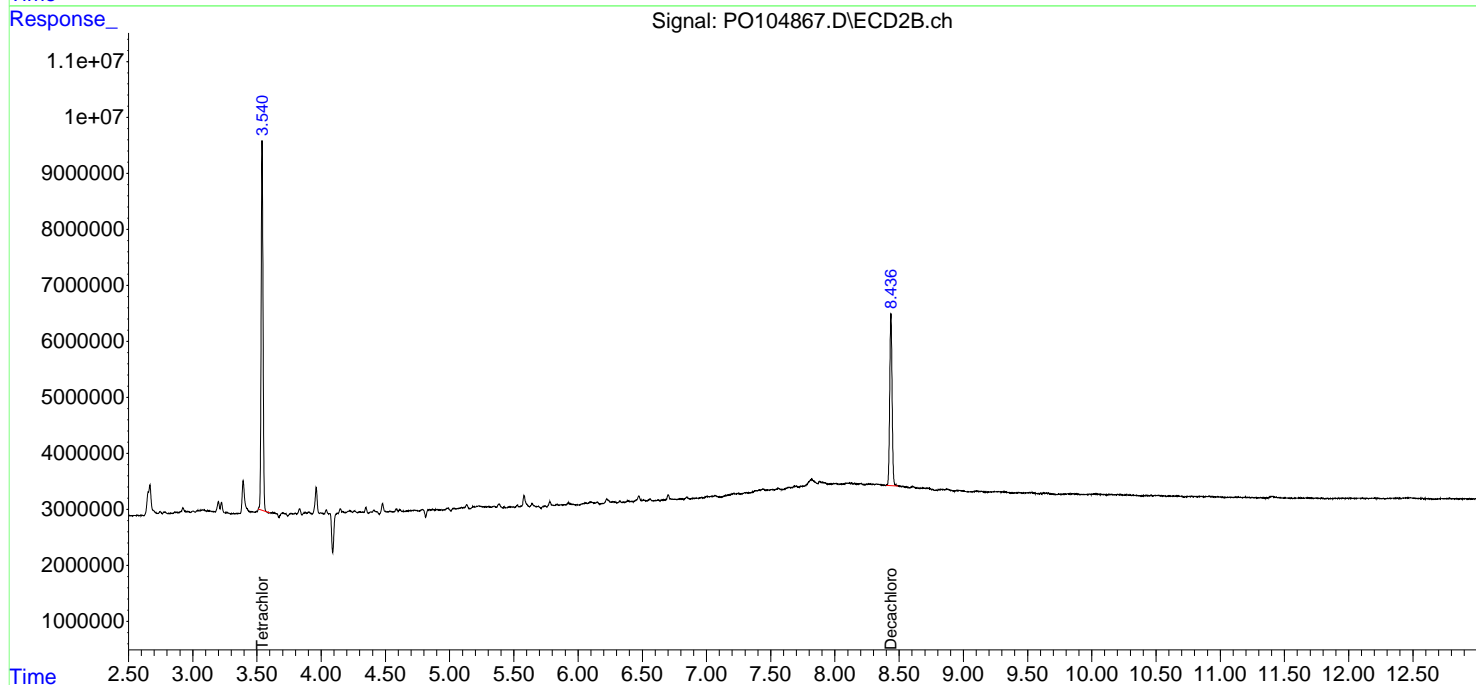
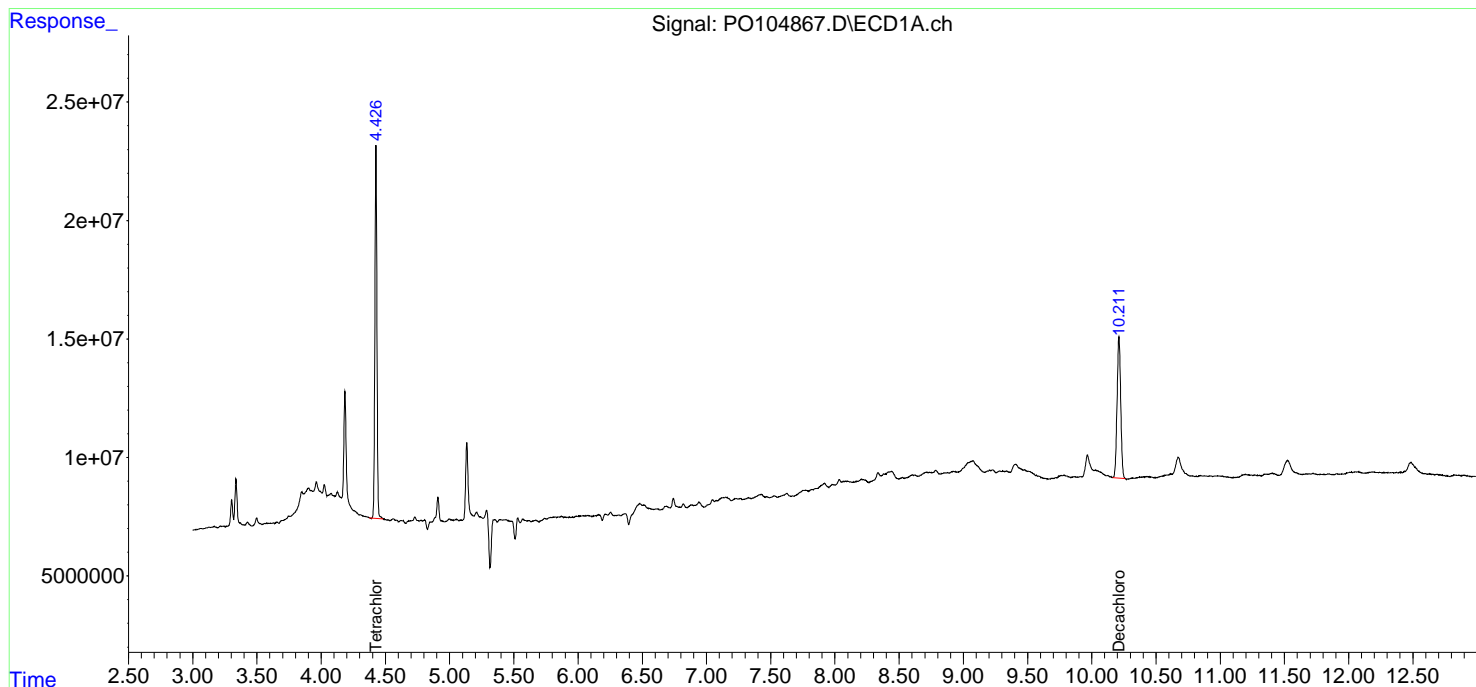
APPROVED

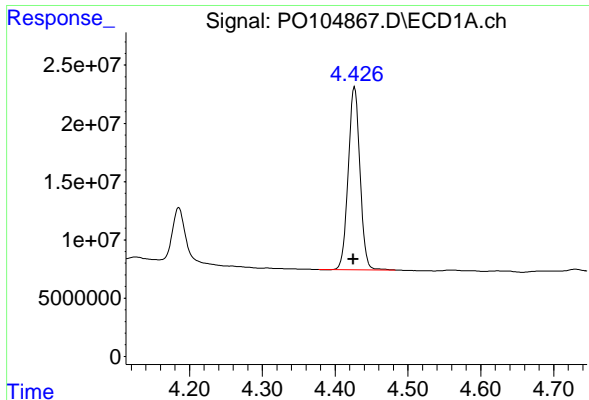
Reviewed By :Yogesh Patel 07/22/2024

Supervised By :Ankita Jodhani 07/22/2024

Integration File signal 1: autoint1.e
 Integration File signal 2: autoint2.e
 Quant Time: Jul 20 00:30:30 2024
 Quant Method : Z:\pestpcbsrv\HPCHEM1\ECD_O\methods\PO070224.M
 Quant Title : GC EXTRACTABLES
 QLast Update : Tue Jul 02 16:29:20 2024
 Response via : Initial Calibration
 Integrator: ChemStation

Volume Inj. : 2 µl
 Signal #1 Phase : ZB-MR1 Signal #2 Phase: ZB-MR2
 Signal #1 Info : 30Mx0.32mmx 0.50µm Signal #2 Info : 30M x 0.32mm x 0.25µm





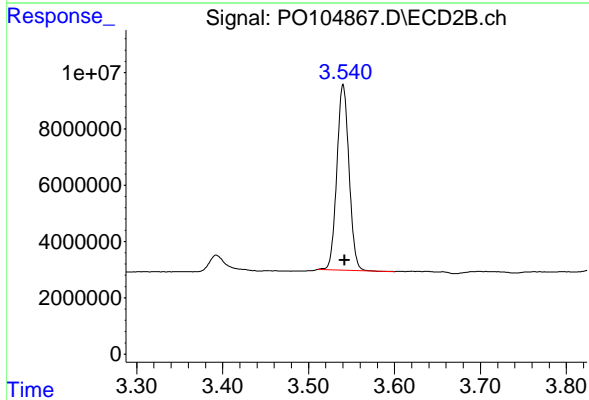
#1 Tetrachloro-m-xylene

R.T.: 4.427 min
 Delta R.T.: 0.002 min
 Response: 176232506
 Conc: 19.68 ng/ml

Instrument :
 ECD_O
 ClientSampleId :
 MIXED-DEMO

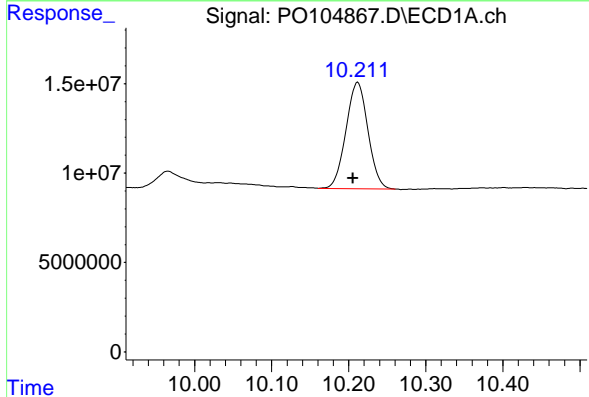
Manual Integrations
 APPROVED

Reviewed By :Yogesh Patel 07/22/2024
 Supervised By :Ankita Jodhani 07/22/2024



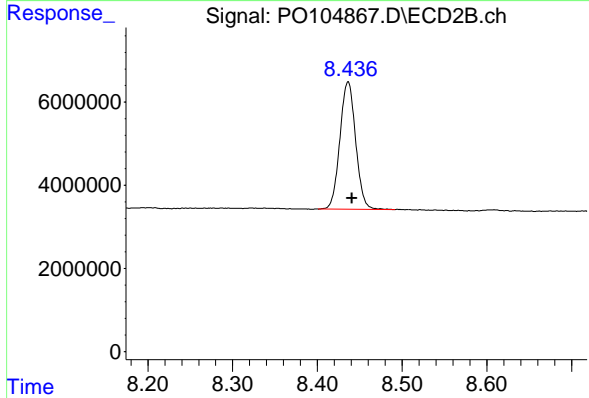
#1 Tetrachloro-m-xylene

R.T.: 3.540 min
 Delta R.T.: -0.002 min
 Response: 64873238
 Conc: 19.88 ng/ml



#2 Decachlorobiphenyl

R.T.: 10.211 min
 Delta R.T.: 0.005 min
 Response: 116605383
 Conc: 19.01 ng/ml m



#2 Decachlorobiphenyl

R.T.: 8.436 min
 Delta R.T.: -0.004 min
 Response: 39639072
 Conc: 18.90 ng/ml