

Data Path : Z:\pestpcbsrv\HPCHEM1\ECD_0\Data\PO122923\
 Data File : PO100851.D
 Signal(s) : Signal #1: ECD1A.ch Signal #2: ECD2B.ch
 Acq On : 29 Dec 2023 09:43
 Operator : YP/AJ
 Sample : AR1242CCC500
 Misc :
 ALS Vial : 4 Sample Multiplier: 1

Instrument :
 ECD_0
ClientSampleId :
 AR1242CCC500

Integration File signal 1: autoint1.e
 Integration File signal 2: autoint2.e
 Quant Time: Dec 29 12:00:57 2023
 Quant Method : Z:\pestpcbsrv\HPCHEM1\ECD_0\methods\PO122023.M
 Quant Title : GC EXTRACTABLES
 QLast Update : Thu Dec 21 04:28:19 2023
 Response via : Initial Calibration
 Integrator: ChemStation

Volume Inj. : 2 µl
 Signal #1 Phase : ZB-MR1 Signal #2 Phase: ZB-MR2
 Signal #1 Info : 30Mx0.32mmx 0.50µ Signal #2 Info : 30M x 0.32mm x 0.25µm

Compound	RT#1	RT#2	Resp#1	Resp#2	ng/ml	ng/ml

System Monitoring Compounds						
1) SA Tetrachlo...	4.348	3.644	151.5E6	96118774	48.552	47.038
2) SA Decachlor...	10.092	8.704	98688782	72284816	47.240	47.891
Target Compounds						
16) L4 AR-1242-1	5.517	4.739	35829544	25235736	508.000	483.182
17) L4 AR-1242-2	5.539	4.758	51697955	34619442	492.538	477.681
18) L4 AR-1242-3	5.601	4.936	32927807	18874850	506.546	492.604
19) L4 AR-1242-4	5.699	5.020	25347213	20739873	506.163	497.579
20) L4 AR-1242-5	6.439	5.548	24318347	23911414	469.858	521.007

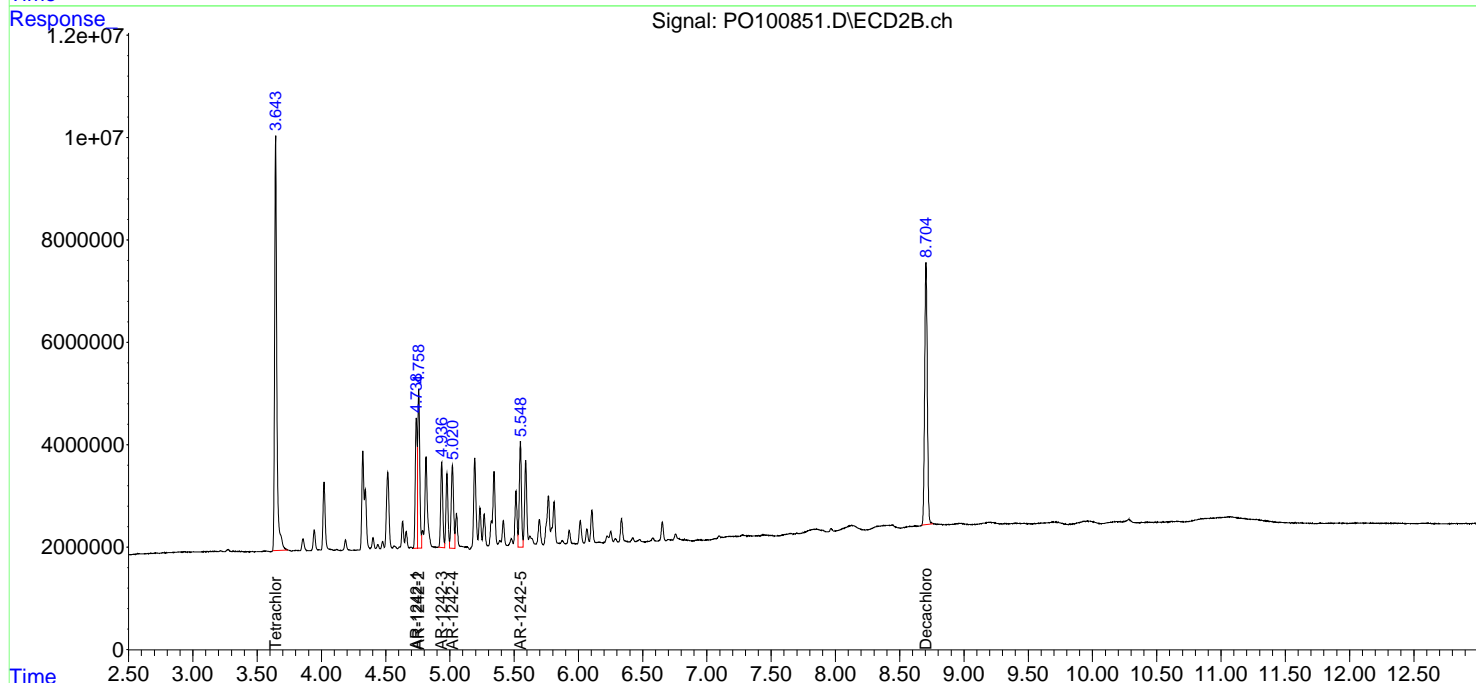
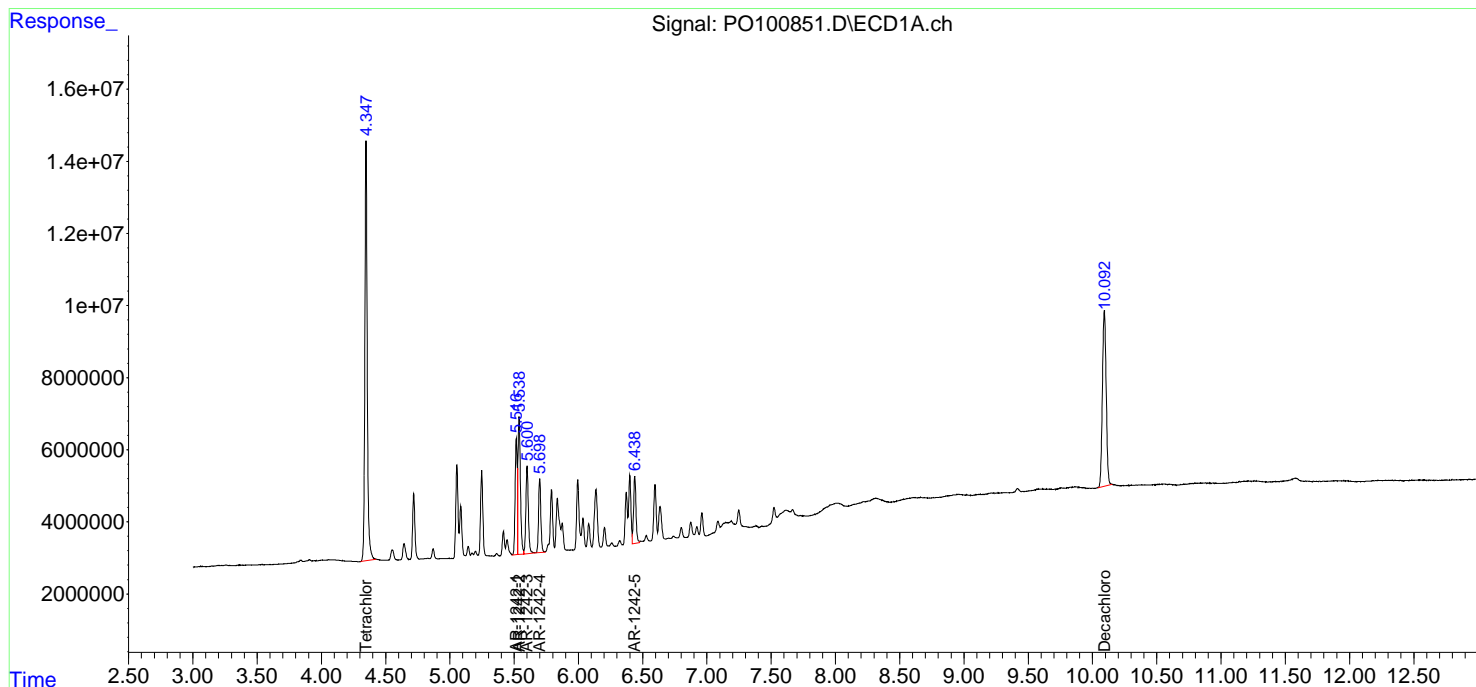
(f)=RT Delta > 1/2 Window (#)=Amounts differ by > 25% (m)=manual int.

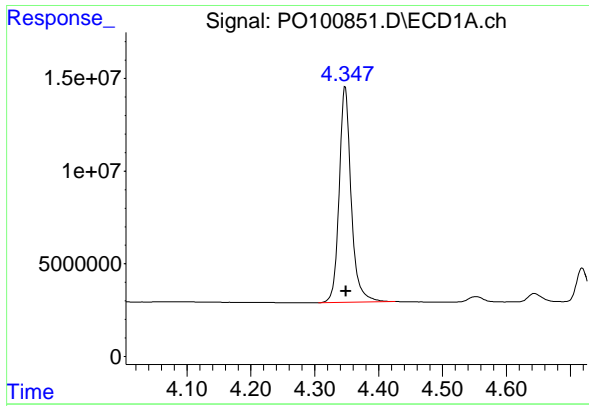
Data Path : Z:\pestpcbsrv\HPCHEM1\ECD_O\Data\PO122923\
Data File : PO100851.D
Signal(s) : Signal #1: ECD1A.ch Signal #2: ECD2B.ch
Acq On : 29 Dec 2023 09:43
Operator : YP/AJ
Sample : AR1242CCC500
Misc :
ALS Vial : 4 Sample Multiplier: 1

Instrument :
ECD_O
ClientSampleId :
AR1242CCC500

Integration File signal 1: autoint1.e
Integration File signal 2: autoint2.e
Quant Time: Dec 29 12:00:57 2023
Quant Method : Z:\pestpcbsrv\HPCHEM1\ECD_O\methods\PO122023.M
Quant Title : GC EXTRACTABLES
QLast Update : Thu Dec 21 04:28:19 2023
Response via : Initial Calibration
Integrator: ChemStation

Volume Inj. : 2 µl
Signal #1 Phase : ZB-MR1 Signal #2 Phase: ZB-MR2
Signal #1 Info : 30Mx0.32mmx 0.50µm Signal #2 Info : 30M x 0.32mm x 0.25µm

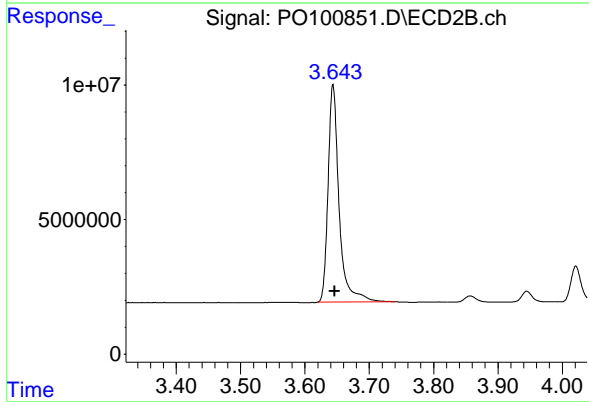




#1 Tetrachloro-m-xylene

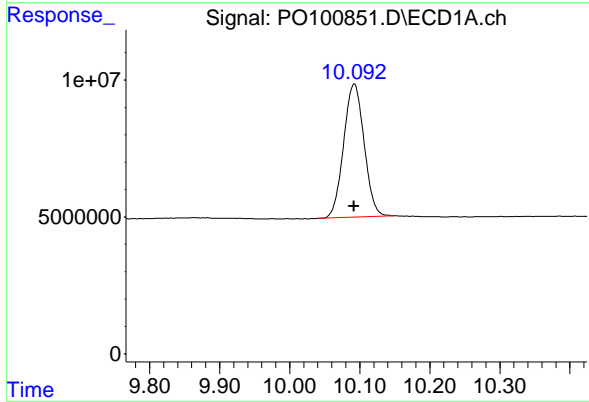
R.T.: 4.348 min
 Delta R.T.: -0.001 min
 Response: 151494041
 Conc: 48.55 ng/ml

Instrument :
 ECD_O
 ClientSampleId :
 AR1242CCC500



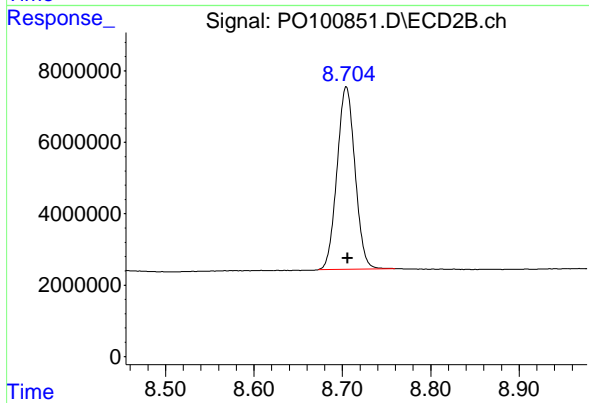
#1 Tetrachloro-m-xylene

R.T.: 3.644 min
 Delta R.T.: -0.003 min
 Response: 96118774
 Conc: 47.04 ng/ml



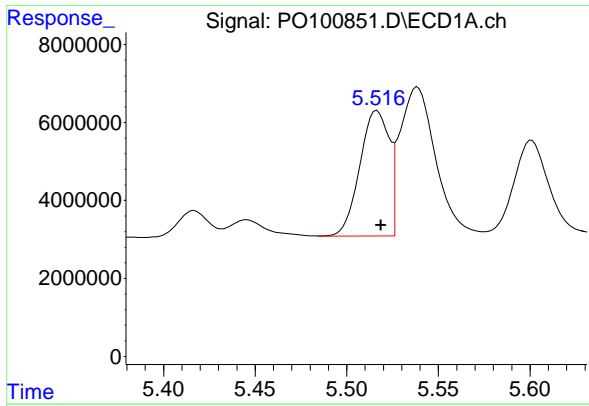
#2 Decachlorobiphenyl

R.T.: 10.092 min
 Delta R.T.: 0.000 min
 Response: 98688782
 Conc: 47.24 ng/ml



#2 Decachlorobiphenyl

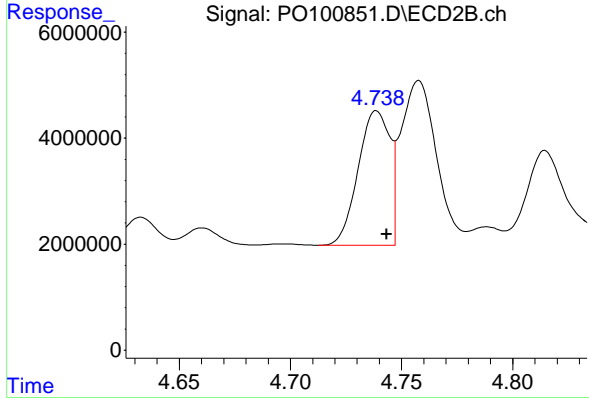
R.T.: 8.704 min
 Delta R.T.: -0.002 min
 Response: 72284816
 Conc: 47.89 ng/ml



#16 AR-1242-1

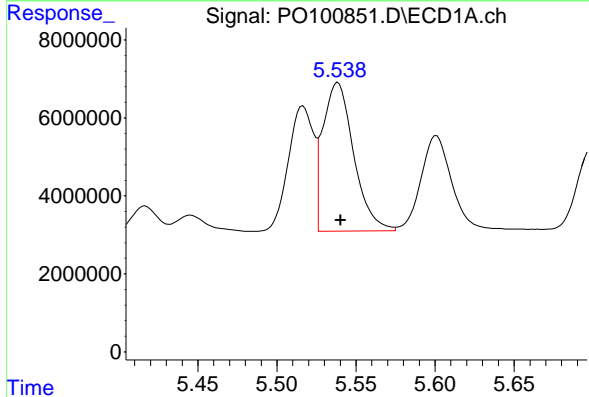
R.T.: 5.517 min
 Delta R.T.: -0.002 min
 Response: 35829544
 Conc: 508.00 ng/ml

Instrument :
 ECD_O
 ClientSampleId :
 AR1242CCC500



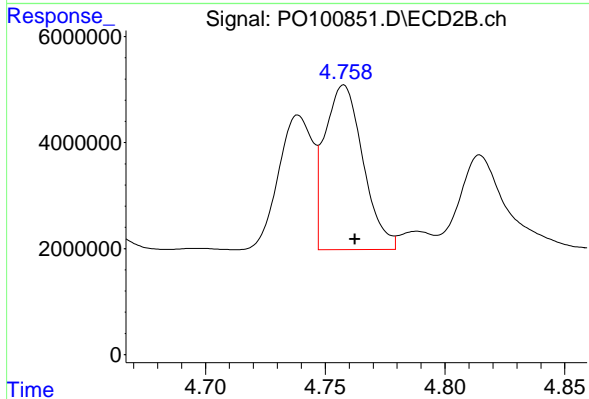
#16 AR-1242-1

R.T.: 4.739 min
 Delta R.T.: -0.005 min
 Response: 25235736
 Conc: 483.18 ng/ml



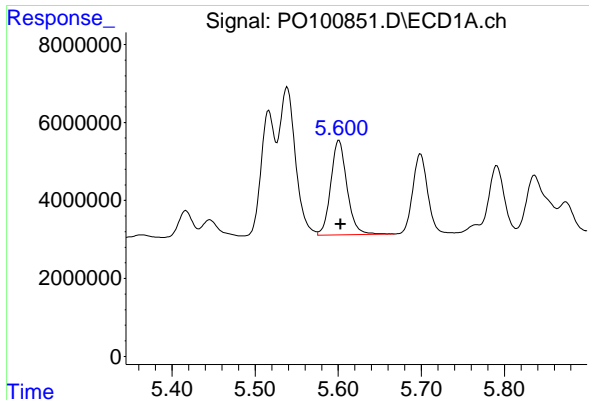
#17 AR-1242-2

R.T.: 5.539 min
 Delta R.T.: -0.002 min
 Response: 51697955
 Conc: 492.54 ng/ml



#17 AR-1242-2

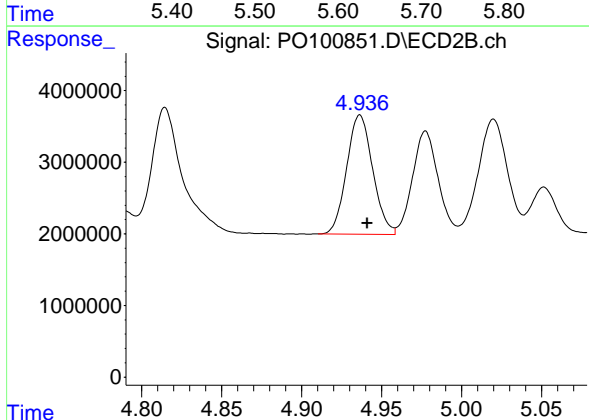
R.T.: 4.758 min
 Delta R.T.: -0.005 min
 Response: 34619442
 Conc: 477.68 ng/ml



#18 AR-1242-3

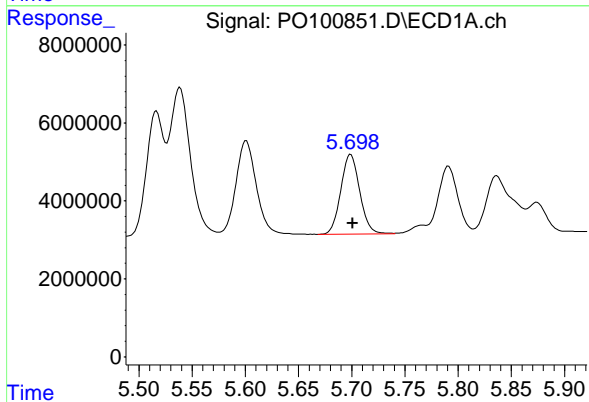
R.T.: 5.601 min
 Delta R.T.: -0.002 min
 Response: 32927807
 Conc: 506.55 ng/ml

Instrument :
 ECD_O
 ClientSampleId :
 AR1242CCC500



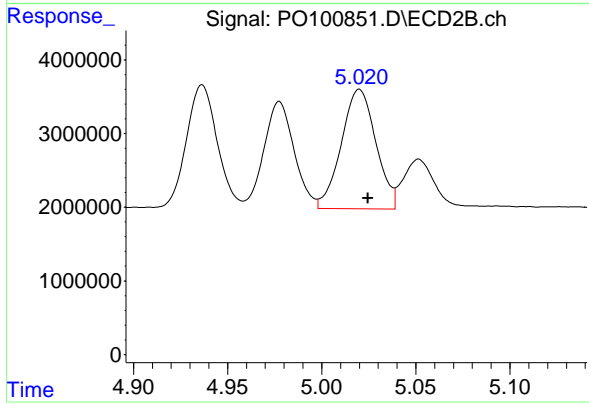
#18 AR-1242-3

R.T.: 4.936 min
 Delta R.T.: -0.005 min
 Response: 18874850
 Conc: 492.60 ng/ml



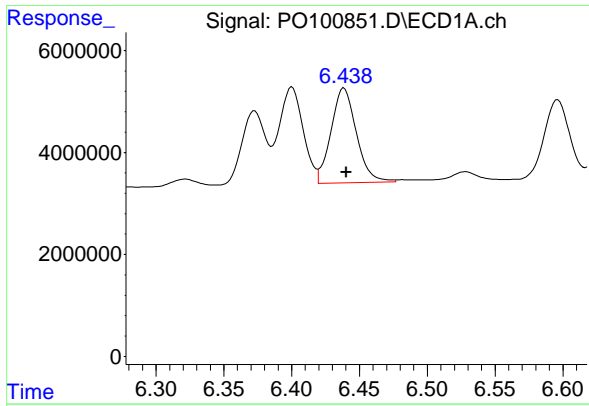
#19 AR-1242-4

R.T.: 5.699 min
 Delta R.T.: -0.002 min
 Response: 25347213
 Conc: 506.16 ng/ml



#19 AR-1242-4

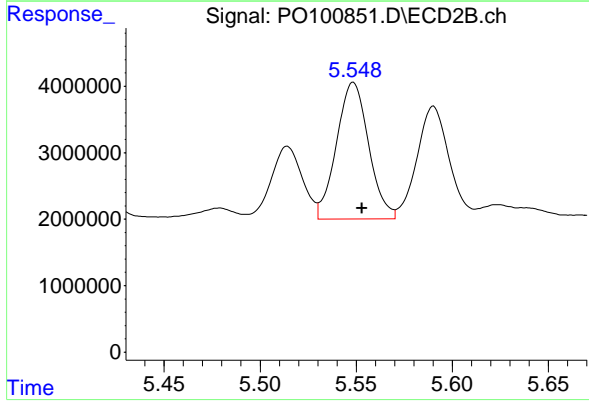
R.T.: 5.020 min
 Delta R.T.: -0.005 min
 Response: 20739873
 Conc: 497.58 ng/ml



#20 AR-1242-5

R.T.: 6.439 min
Delta R.T.: -0.002 min
Response: 24318347
Conc: 469.86 ng/ml

Instrument :
ECD_O
ClientSampleId :
AR1242CCC500



#20 AR-1242-5

R.T.: 5.548 min
Delta R.T.: -0.005 min
Response: 23911414
Conc: 521.01 ng/ml