

Data Path : Z:\pestpcbsrv\HPCHEM1\ECD_0\Data\P0042419\
 Data File : P0055613.D
 Signal(s) : Signal #1: ECD1A.CH Signal #2: ECD2B.CH
 Acq On : 24 Apr 2019 17:12
 Operator : SM/SJ
 Sample : K2241-01
 Misc : AR1221 LOD 25PPB
 ALS Vial : 8 Sample Multiplier: 1

Instrument :
 ECD_0
ClientSampleId :
 LOD-MDL-SOIL-01-QT2-2019

Integration File signal 1: autoint1.e
 Integration File signal 2: autoint2.e
 Quant Time: Apr 25 02:02:41 2019
 Quant Method : Z:\pestpcbsrv\HPCHEM1\ECD_0\methods\P0042419.M
 Quant Title : GC EXTRACTABLES
 QLast Update : Thu Apr 25 01:58:33 2019
 Response via : Initial Calibration
 Integrator: ChemStation 6890 Scale Mode: Small noise peaks clipped

Volume Inj. : 2 µl
 Signal #1 Phase : ZB-MR1 Signal #2 Phase: ZB-MR2
 Signal #1 Info : 30Mx0.32mmx 0.50µ Signal #2 Info : 30M x 0.32mm x 0.25µm

Compound	RT#1	RT#2	Resp#1	Resp#2	ng/ml	ng/ml

System Monitoring Compounds						
1) SA Tetrachlo...	4.286	3.598	405413	398024	16.000	16.344
2) SA Decachlor...	9.897	8.557	714057	506365	16.640	16.473
Target Compounds						
8) L2 AR-1221-1	4.492	3.809	13605	10065	39.604	34.310
9) L2 AR-1221-2	4.583	3.893	16247	12278	60.695	53.908
10) L2 AR-1221-3	4.658	3.970	33672	25447	41.543	34.804
11) L3 AR-1232-1	4.658	3.970	33672	25447	50.615	42.861
28) L6 AR-1254-3	6.889	0.000	10635	0	3.805	N.D. #

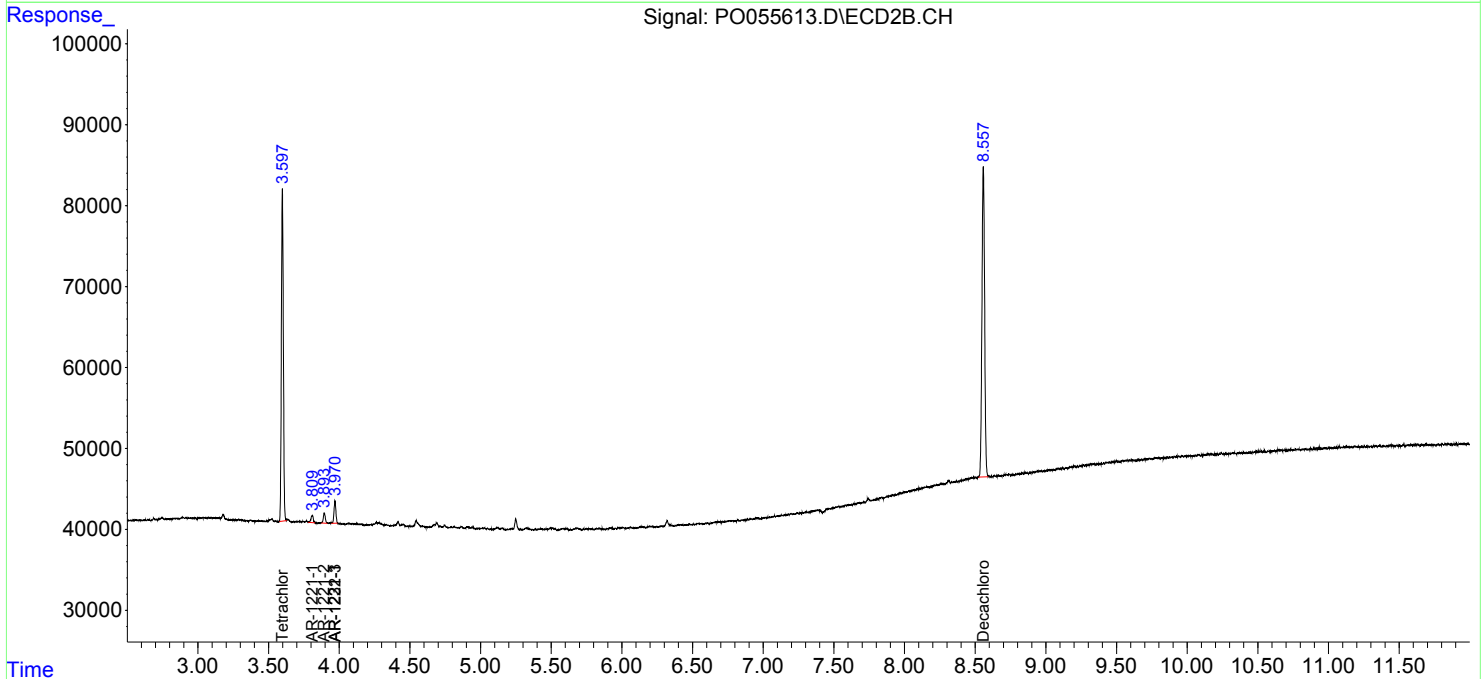
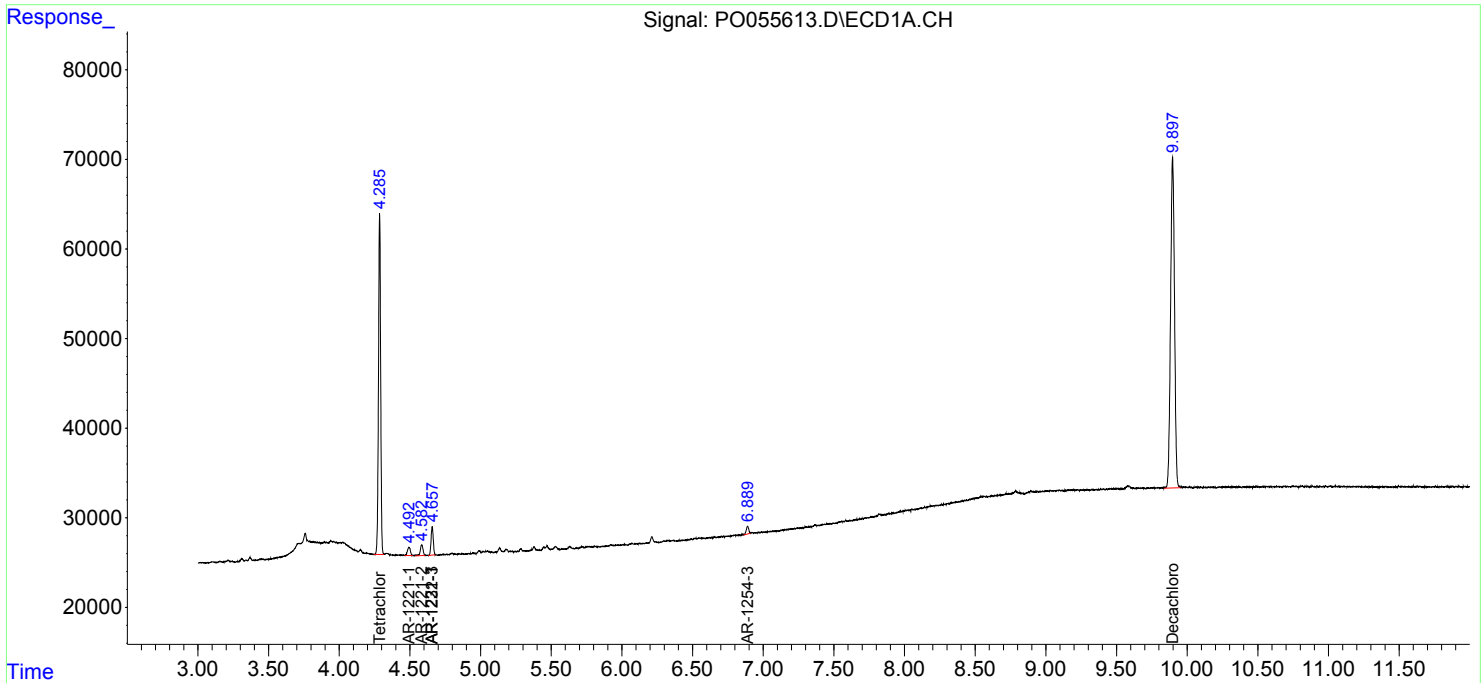
(f)=RT Delta > 1/2 Window (#)=Amounts differ by > 25% (m)=manual int.

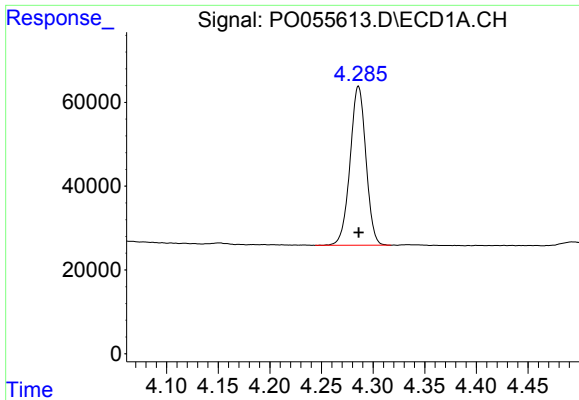
Data Path : Z:\pestpcbsrv\HPCHEM1\ECD_0\Data\P0042419\
 Data File : P0055613.D
 Signal(s) : Signal #1: ECD1A.CH Signal #2: ECD2B.CH
 Acq On : 24 Apr 2019 17:12
 Operator : SM/SJ
 Sample : K2241-01
 Misc : AR1221 LOD 25PPB
 ALS Vial : 8 Sample Multiplier: 1

Instrument :
 ECD_0
ClientSampled :
 LOD-MDL-SOIL-01-QT2-2019

Integration File signal 1: autoint1.e
 Integration File signal 2: autoint2.e
 Quant Time: Apr 25 02:02:41 2019
 Quant Method : Z:\pestpcbsrv\HPCHEM1\ECD_0\methods\P0042419.M
 Quant Title : GC EXTRACTABLES
 QLast Update : Thu Apr 25 01:58:33 2019
 Response via : Initial Calibration
 Integrator: ChemStation 6890 Scale Mode: Small noise peaks clipped

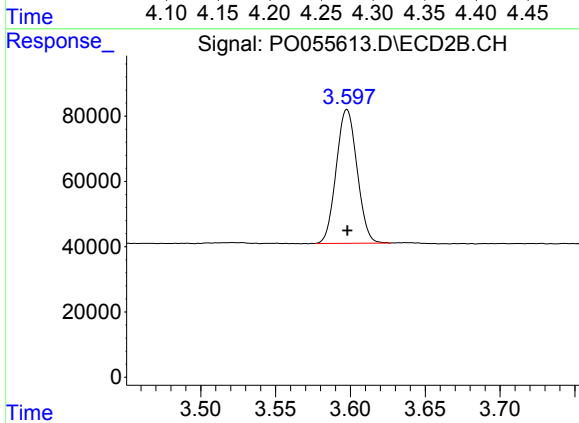
Volume Inj. : 2 µl
 Signal #1 Phase : ZB-MR1 Signal #2 Phase: ZB-MR2
 Signal #1 Info : 30Mx0.32mmx 0.50µ Signal #2 Info : 30M x 0.32mm x 0.25µm



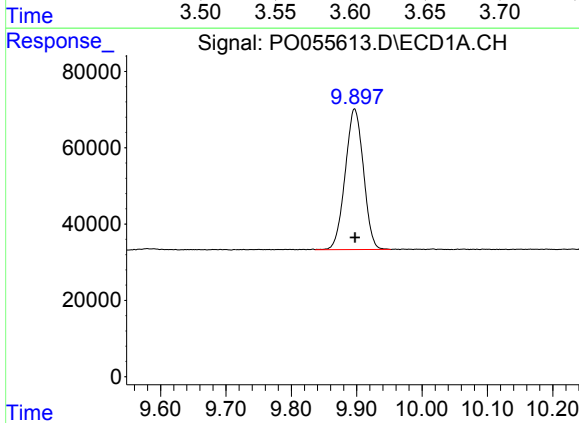


#1 Tetrachloro-m-xylene
 R.T.: 4.286 min
 Delta R.T.: 0.000 min
 Response: 405413
 Conc: 16.00 ng/ml

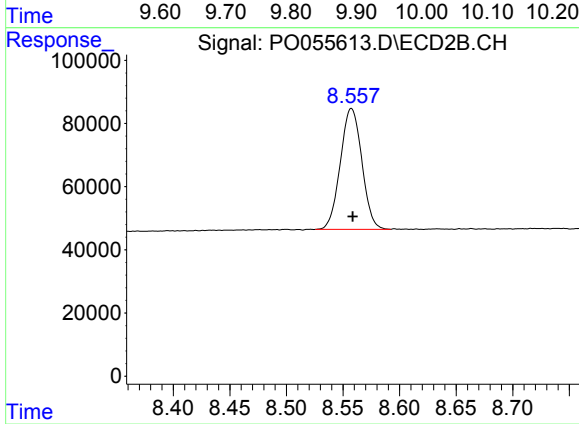
Instrument :
 ECD_O
 ClientSampleId :
 LOD-MDL-SOIL-01-QT2-2019



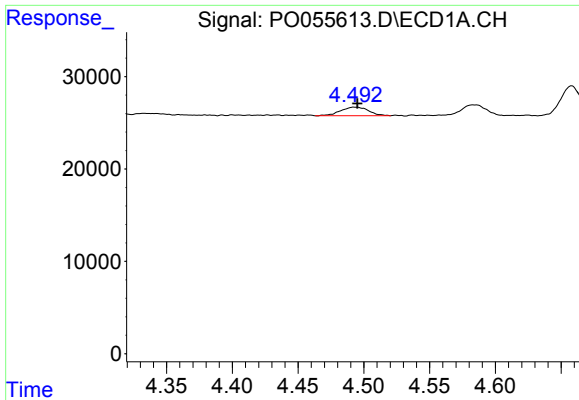
#1 Tetrachloro-m-xylene
 R.T.: 3.598 min
 Delta R.T.: 0.000 min
 Response: 398024
 Conc: 16.34 ng/ml



#2 Decachlorobiphenyl
 R.T.: 9.897 min
 Delta R.T.: 0.000 min
 Response: 714057
 Conc: 16.64 ng/ml



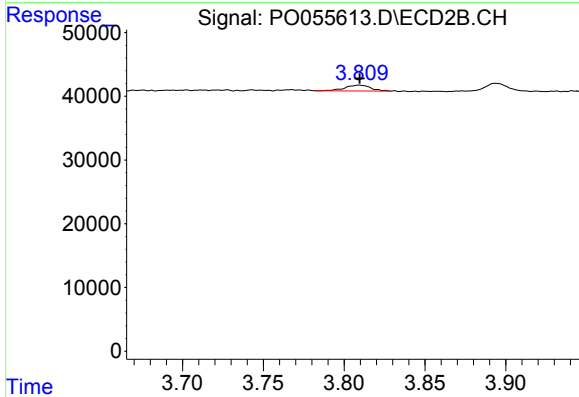
#2 Decachlorobiphenyl
 R.T.: 8.557 min
 Delta R.T.: -0.001 min
 Response: 506365
 Conc: 16.47 ng/ml



#8 AR-1221-1

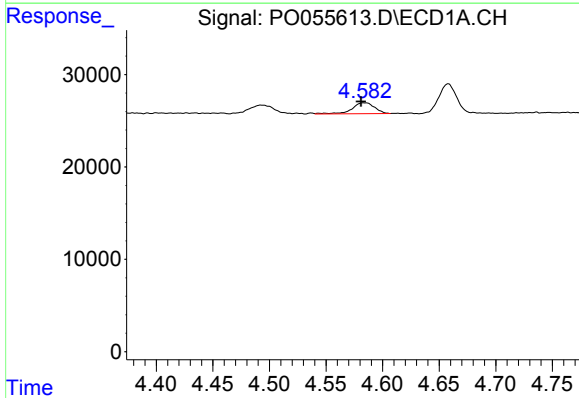
R.T.: 4.492 min
 Delta R.T.: -0.003 min
 Response: 13605
 Conc: 39.60 ng/ml

Instrument :
 ECD_O
ClientSampleId :
 LOD-MDL-SOIL-01-QT2-2019



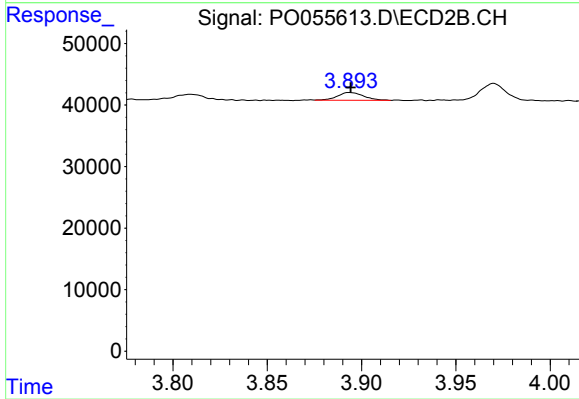
#8 AR-1221-1

R.T.: 3.809 min
 Delta R.T.: 0.000 min
 Response: 10065
 Conc: 34.31 ng/ml



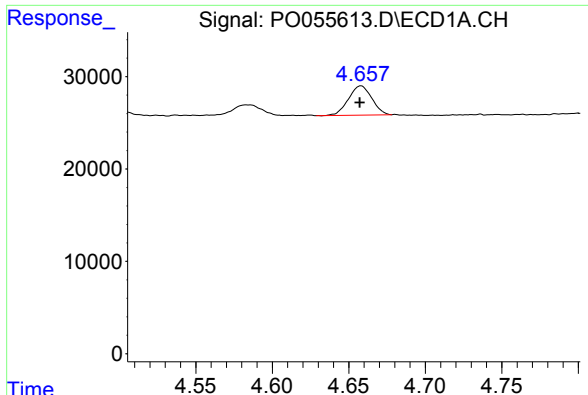
#9 AR-1221-2

R.T.: 4.583 min
 Delta R.T.: 0.002 min
 Response: 16247
 Conc: 60.70 ng/ml



#9 AR-1221-2

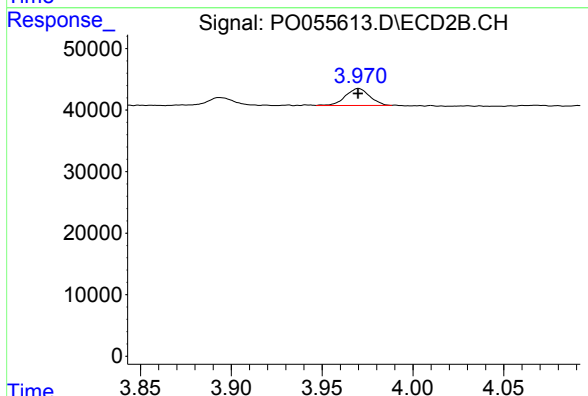
R.T.: 3.893 min
 Delta R.T.: 0.000 min
 Response: 12278
 Conc: 53.91 ng/ml



#10 AR-1221-3

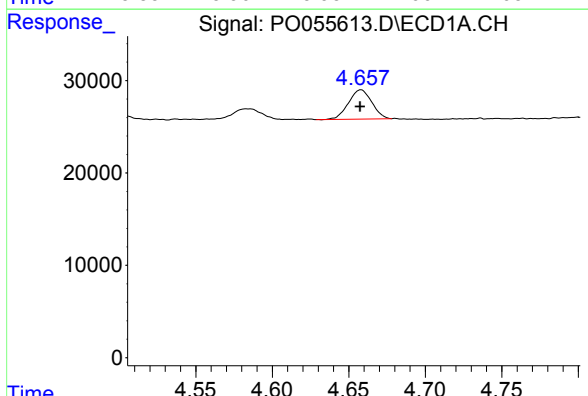
R.T.: 4.658 min
 Delta R.T.: 0.001 min
 Response: 33672
 Conc: 41.54 ng/ml

Instrument :
 ECD_O
 ClientSampleId :
 LOD-MDL-SOIL-01-QT2-2019



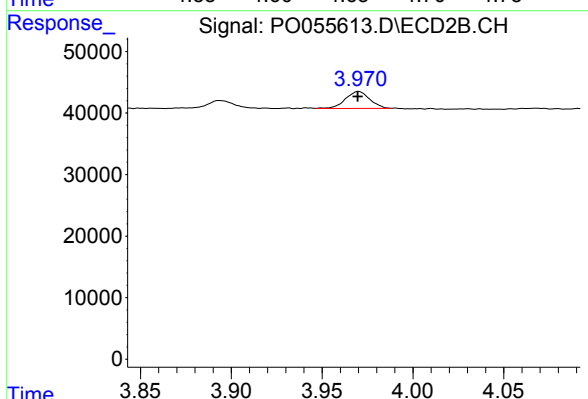
#10 AR-1221-3

R.T.: 3.970 min
 Delta R.T.: 0.000 min
 Response: 25447
 Conc: 34.80 ng/ml



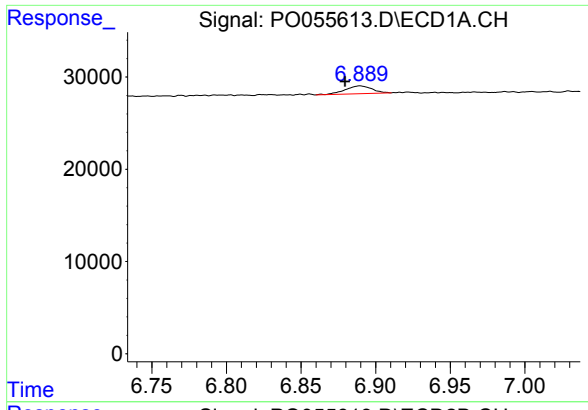
#11 AR-1232-1

R.T.: 4.658 min
 Delta R.T.: 0.000 min
 Response: 33672
 Conc: 50.61 ng/ml



#11 AR-1232-1

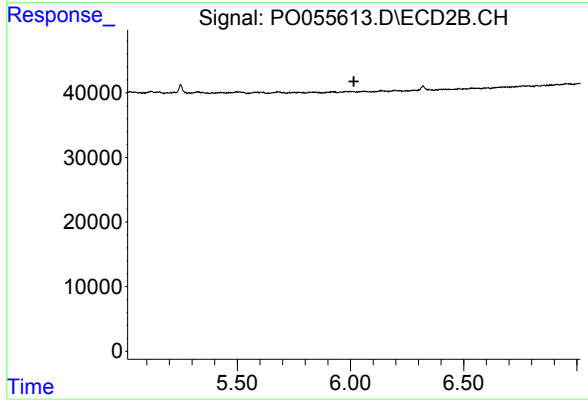
R.T.: 3.970 min
 Delta R.T.: 0.000 min
 Response: 25447
 Conc: 42.86 ng/ml



#28 AR-1254-3

R.T.: 6.889 min
Delta R.T.: 0.010 min
Response: 10635
Conc: 3.81 ng/ml

Instrument :
ECD_O
ClientSampleId :
LOD-MDL-SOIL-01-QT2-2019



#28 AR-1254-3

R.T.: 0.000 min
Exp R.T. : 6.015 min
Response: 0
Conc: N.D.