

Data Path : Z:\pestpcbsrv\HPCHEM1\ECD_0\Data\P0091818\
 Data File : P0049122.D
 Signal(s) : Signal #1: ECD1A.CH Signal #2: ECD2B.CH
 Acq On : 19 Sep 2018 2:29
 Operator : SM/SJ
 Sample : J4931-05
 Misc :
 ALS Vial : 33 Sample Multiplier: 1

Instrument :
 ECD_0
 ClientSampleId :
 091418-DBRI-E-D-B

Integration File signal 1: autoint1.e
 Integration File signal 2: autoint2.e
 Quant Time: Sep 19 04:37:50 2018
 Quant Method : Z:\pestpcbsrv\HPCHEM1\ECD_0\methods\P0091118.M
 Quant Title : GC EXTRACTABLES
 QLast Update : Wed Sep 12 08:13:07 2018
 Response via : Initial Calibration
 Integrator: ChemStation 6890 Scale Mode: Small noise peaks clipped

Volume Inj. : 2 µl
 Signal #1 Phase : ZB-MR1 Signal #2 Phase: ZB-MR2
 Signal #1 Info : 30Mx0.32mmx 0.50µ Signal #2 Info : 30M x 0.32mm x 0.25µm

Compound	RT#1	RT#2	Resp#1	Resp#2	ng/ml	ng/ml

System Monitoring Compounds						
1) SA Tetrachlo...	4.397	3.526	4818158	4690623	29.409m	25.712m
2) SA Decachlor...	10.120	8.463	4771558	3631121	21.417	19.568

Target Compounds

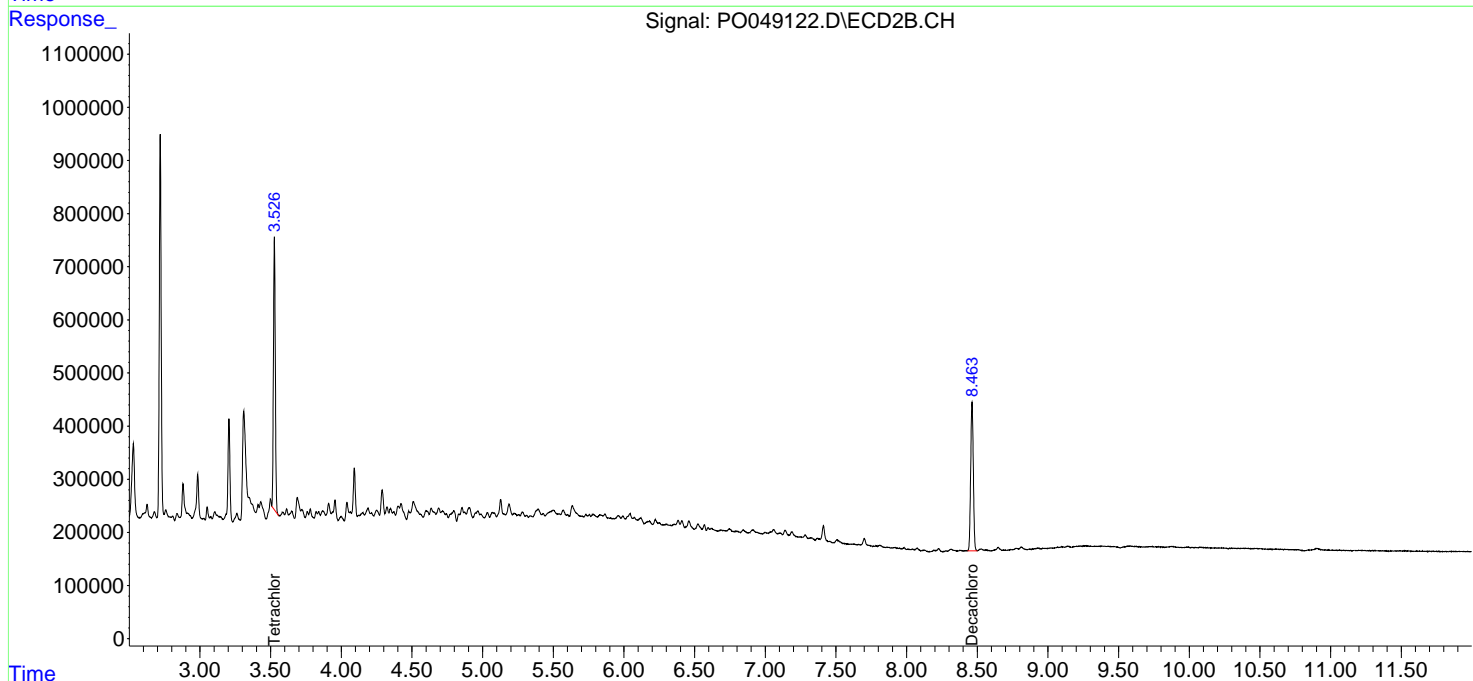
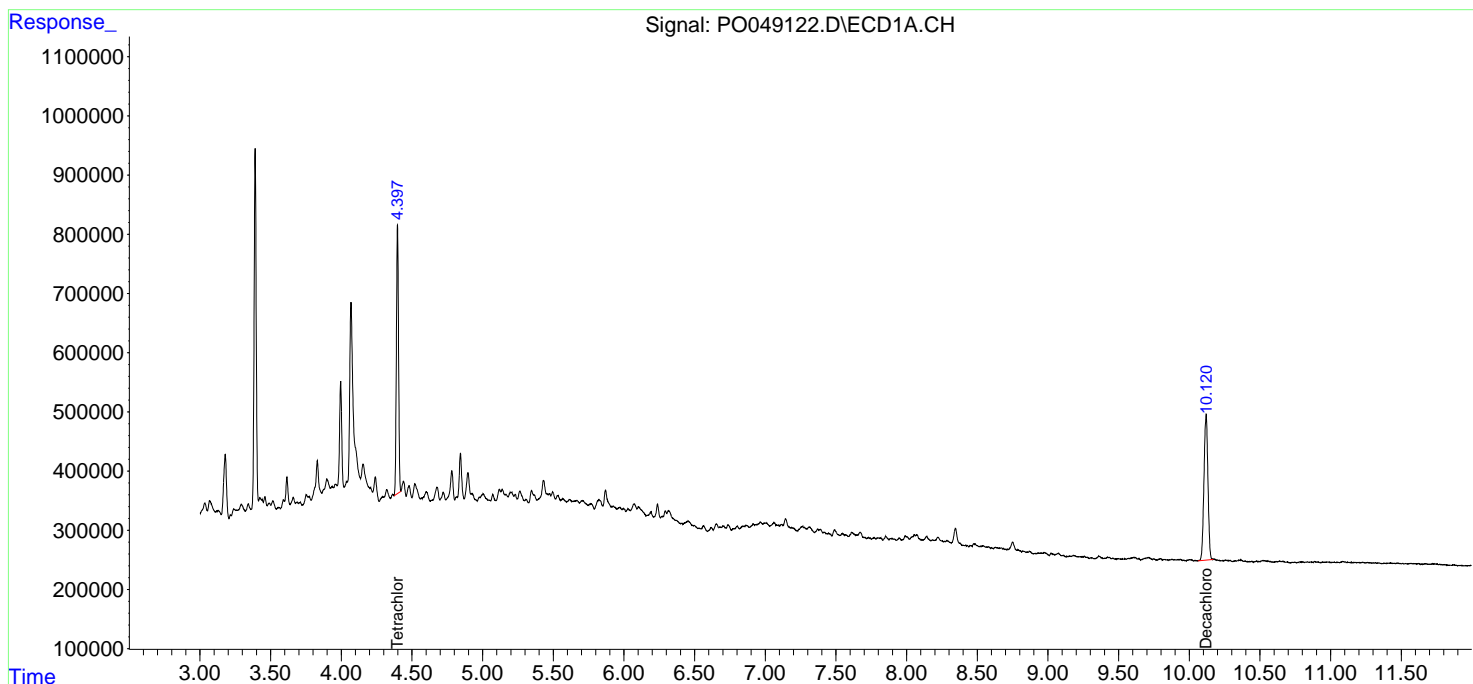
(f)=RT Delta > 1/2 Window (#)=Amounts differ by > 25% (m)=manual int.

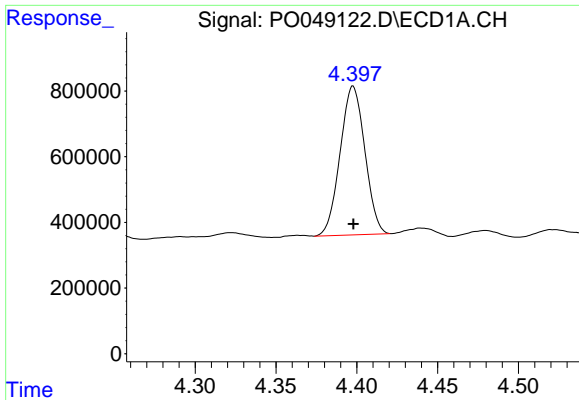
Data Path : Z:\pestpcbsrv\HPCHEM1\ECD_0\Data\P0091818\
 Data File : P0049122.D
 Signal(s) : Signal #1: ECD1A.CH Signal #2: ECD2B.CH
 Acq On : 19 Sep 2018 2:29
 Operator : SM/SJ
 Sample : J4931-05
 Misc :
 ALS Vial : 33 Sample Multiplier: 1

Instrument :
 ECD_O
 ClientSampleId :
 091418-DBRI-E-D-B

Integration File signal 1: autoint1.e
 Integration File signal 2: autoint2.e
 Quant Time: Sep 19 04:37:50 2018
 Quant Method : Z:\pestpcbsrv\HPCHEM1\ECD_0\methods\P0091118.M
 Quant Title : GC EXTRACTABLES
 QLast Update : Wed Sep 12 08:13:07 2018
 Response via : Initial Calibration
 Integrator: ChemStation 6890 Scale Mode: Small noise peaks clipped

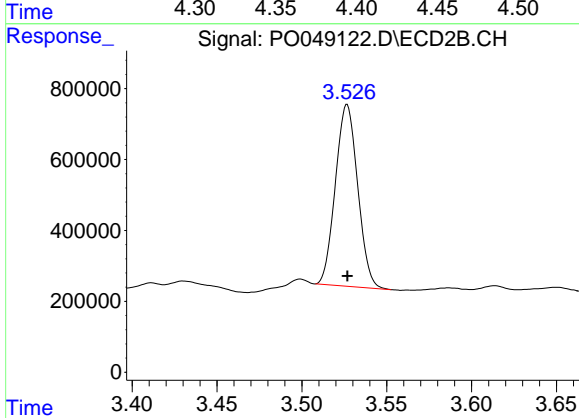
Volume Inj. : 2 µl
 Signal #1 Phase : ZB-MR1 Signal #2 Phase: ZB-MR2
 Signal #1 Info : 30Mx0.32mmx 0.50µ Signal #2 Info : 30M x 0.32mm x 0.25µm



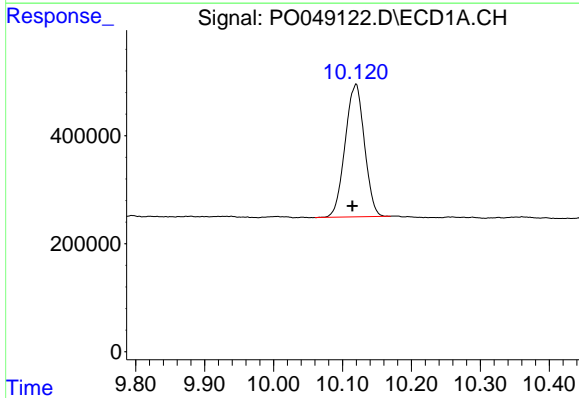


#1 Tetrachloro-m-xylene
 R.T.: 4.397 min
 Delta R.T.: 0.000 min
 Response: 4818158
 Conc: 29.41 ng/ml m

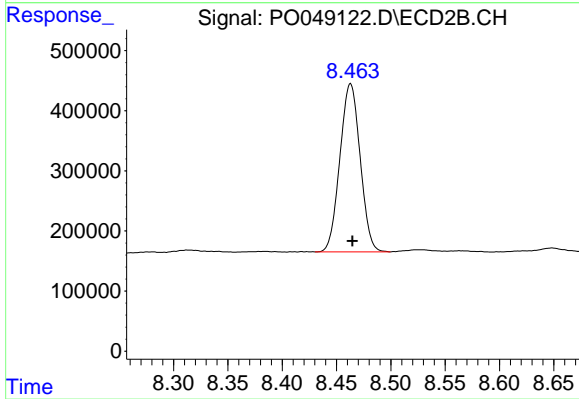
Instrument :
 ECD_O
ClientSampleId :
 091418-DBRI-E-D-B



#1 Tetrachloro-m-xylene
 R.T.: 3.526 min
 Delta R.T.: 0.000 min
 Response: 4690623
 Conc: 25.71 ng/ml m



#2 Decachlorobiphenyl
 R.T.: 10.120 min
 Delta R.T.: 0.005 min
 Response: 4771558
 Conc: 21.42 ng/ml



#2 Decachlorobiphenyl
 R.T.: 8.463 min
 Delta R.T.: -0.002 min
 Response: 3631121
 Conc: 19.57 ng/ml