

Data Path : Z:\pestpcbsrv\HPCHEM1\ECD\_0\Data\P0010819\  
 Data File : P0053314.D  
 Signal(s) : Signal #1: ECD1A.CH Signal #2: ECD2B.CH  
 Acq On : 08 Jan 2019 15:27  
 Operator : SM/SJ  
 Sample : PB116233BS  
 Misc :  
 ALS Vial : 5 Sample Multiplier: 1

**Instrument :**  
 ECD\_0  
**ClientSampleId :**  
 PB116233BS

**Manual Integrations**  
**APPROVED**  
 Sohil  
 1/9/2019 7:43:38 AM

Integration File signal 1: autoint1.e  
 Integration File signal 2: autoint2.e  
 Quant Time: Jan 09 03:40:57 2019  
 Quant Method : Z:\pestpcbsrv\HPCHEM1\ECD\_0\methods\P0010819.M  
 Quant Title : GC EXTRACTABLES  
 QLast Update : Wed Jan 09 03:34:05 2019  
 Response via : Initial Calibration  
 Integrator: ChemStation 6890 Scale Mode: Small noise peaks clipped

Volume Inj. : 2 µl  
 Signal #1 Phase : ZB-MR1 Signal #2 Phase: ZB-MR2  
 Signal #1 Info : 30Mx0.32mmx 0.50µ Signal #2 Info : 30M x 0.32mm x 0.25µm

Compound	RT#1	RT#2	Resp#1	Resp#2	ng/ml	ng/ml
-----						
System Monitoring Compounds						
1) SA Tetrachlo...	4.172	3.209	30055307	4996262	22.492	19.982m
2) SA Decachlor...	9.635	7.853	16829837	5295487	21.307	23.124
Target Compounds						
3) L1 AR-1016-1	5.319	4.197	8769705	2112351	240.400	214.250
4) L1 AR-1016-2	5.340	4.211	12424398	3291672	234.690m	222.088
5) L1 AR-1016-3	5.400	4.371	7580678	1755592	236.708	218.164
6) L1 AR-1016-4	5.498	4.413	6140832	1319804	237.819	218.533
7) L1 AR-1016-5	5.786	4.606	5566672	1724541	235.761	219.188
31) L7 AR-1260-1	6.890	5.566	8782707	3161511	224.685	212.801
32) L7 AR-1260-2	7.143	5.751	10432197	3857455	217.806	213.673
33) L7 AR-1260-3	7.496	5.889	6643472	3494905	223.205	213.838
34) L7 AR-1260-4	7.721	6.338	7264293	2356050	215.501	224.749
35) L7 AR-1260-5	8.026	6.578	14760066	5701040	216.055	221.526
-----						

(f)=RT Delta > 1/2 Window (#)=Amounts differ by > 25% (m)=manual int.

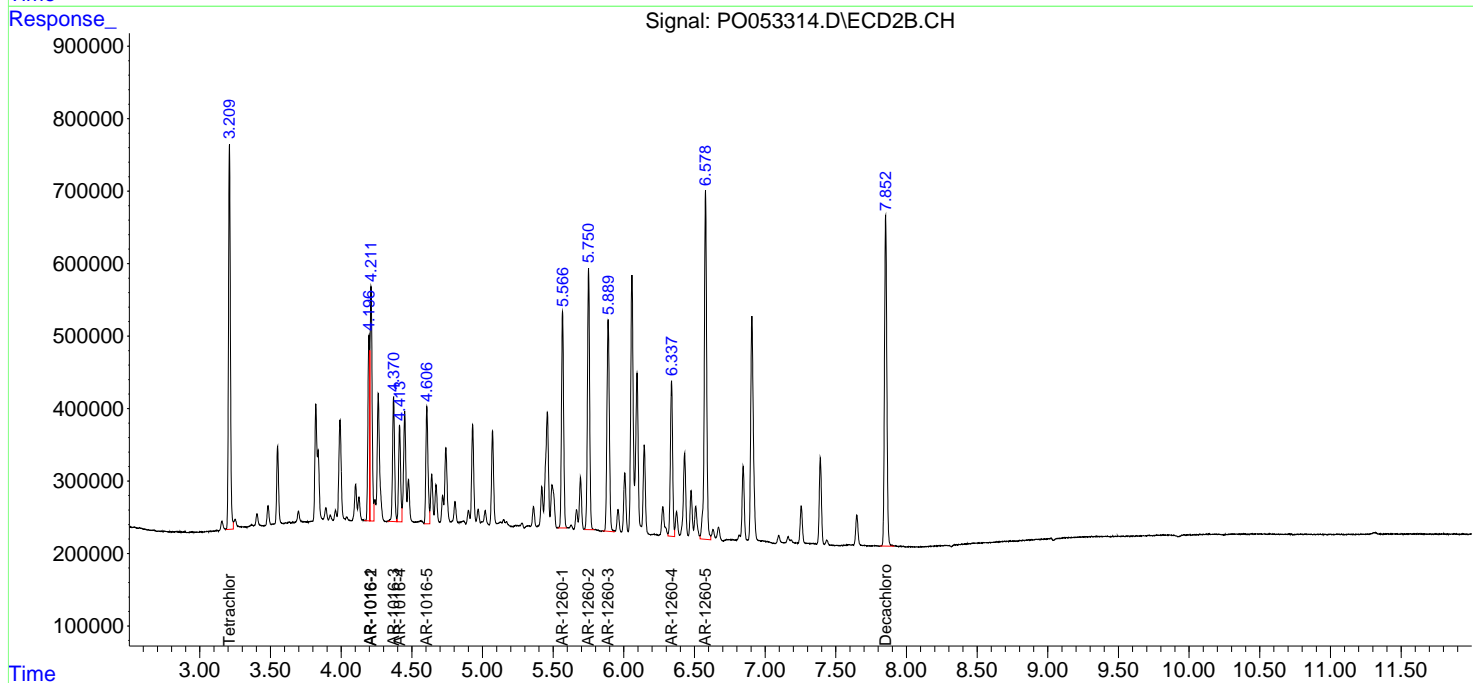
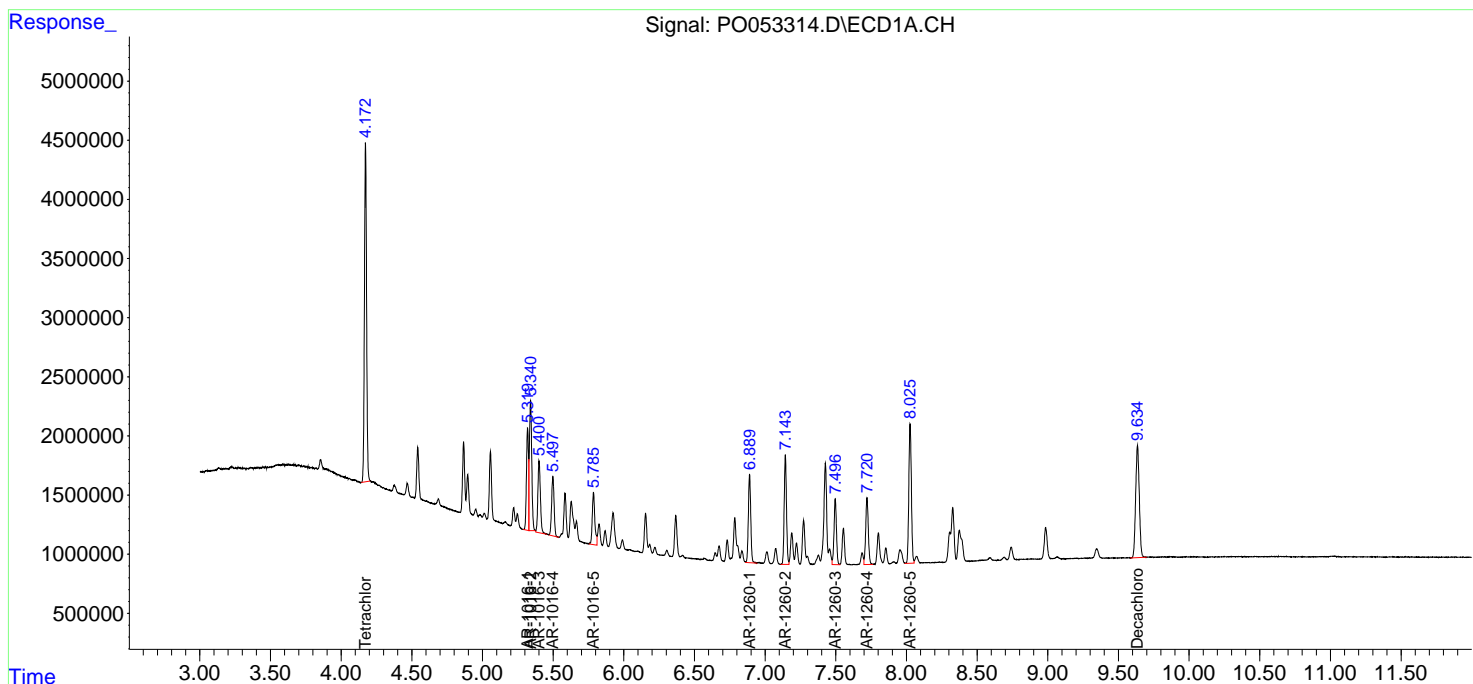
Data Path : Z:\pestpcbsrv\HPCHEM1\ECD\_0\Data\PO010819\  
 Data File : PO053314.D  
 Signal(s) : Signal #1: ECD1A.CH Signal #2: ECD2B.CH  
 Acq On : 08 Jan 2019 15:27  
 Operator : SM/SJ  
 Sample : PB116233BS  
 Misc :  
 ALS Vial : 5 Sample Multiplier: 1

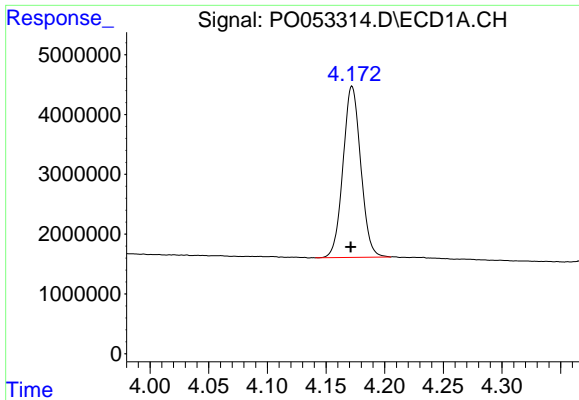
**Instrument :**  
 ECD\_O  
**Client Sampled :**  
 PB116233BS

**Manual Integrations**  
**APPROVED**  
 Sohil  
 1/9/2019 7:43:38 AM

Integration File signal 1: autoint1.e  
 Integration File signal 2: autoint2.e  
 Quant Time: Jan 09 03:40:57 2019  
 Quant Method : Z:\pestpcbsrv\HPCHEM1\ECD\_0\methods\PO010819.M  
 Quant Title : GC EXTRACTABLES  
 QLast Update : Wed Jan 09 03:34:05 2019  
 Response via : Initial Calibration  
 Integrator: ChemStation 6890 Scale Mode: Small noise peaks clipped

Volume Inj. : 2 µl  
 Signal #1 Phase : ZB-MR1 Signal #2 Phase: ZB-MR2  
 Signal #1 Info : 30Mx0.32mmx 0.50µ Signal #2 Info : 30M x 0.32mm x 0.25µm

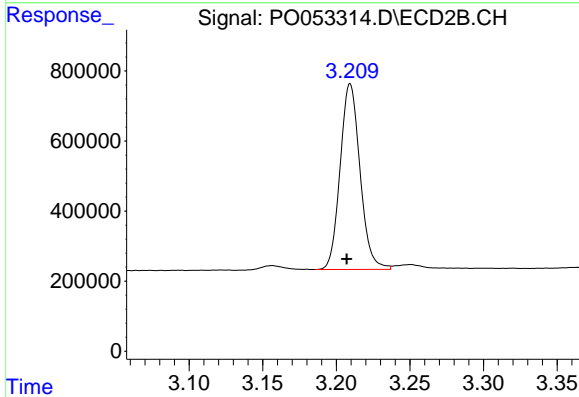




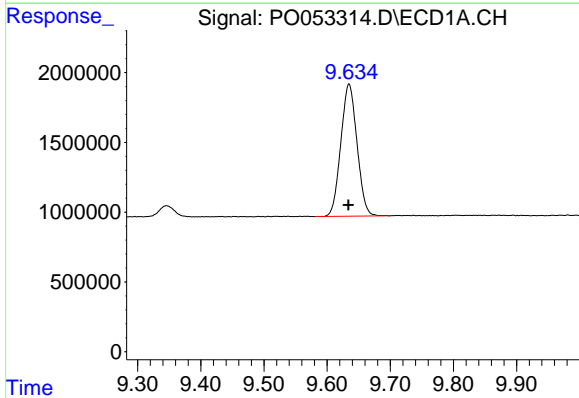
#1 Tetrachloro-m-xylene  
 R.T.: 4.172 min  
 Delta R.T.: 0.001 min  
 Response: 30055307  
 Conc: 22.49 ng/ml

Instrument :  
 ECD\_O  
 ClientSampled :  
 PB116233BS

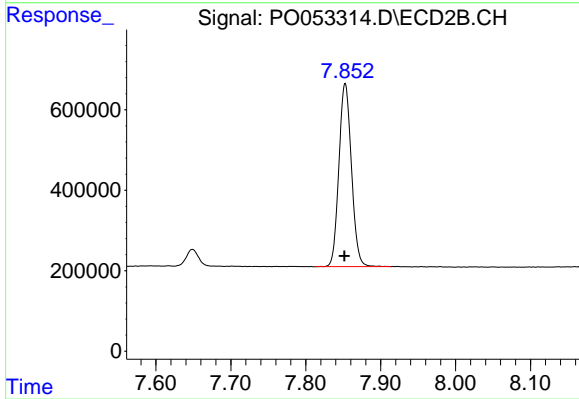
Manual Integrations  
 APPROVED  
 Sohil  
 1/9/2019 7:43:38 AM



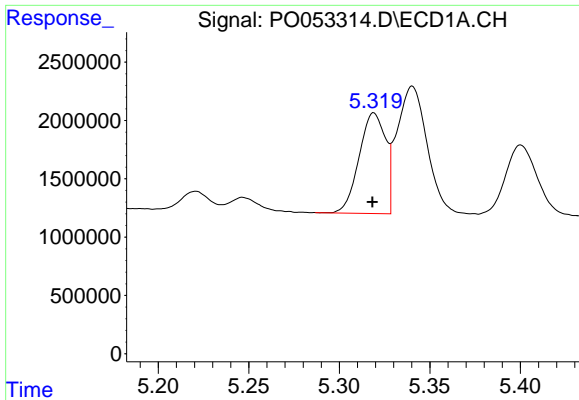
#1 Tetrachloro-m-xylene  
 R.T.: 3.209 min  
 Delta R.T.: 0.002 min  
 Response: 4996262  
 Conc: 19.98 ng/ml m



#2 Decachlorobiphenyl  
 R.T.: 9.635 min  
 Delta R.T.: 0.001 min  
 Response: 16829837  
 Conc: 21.31 ng/ml



#2 Decachlorobiphenyl  
 R.T.: 7.853 min  
 Delta R.T.: 0.000 min  
 Response: 5295487  
 Conc: 23.12 ng/ml

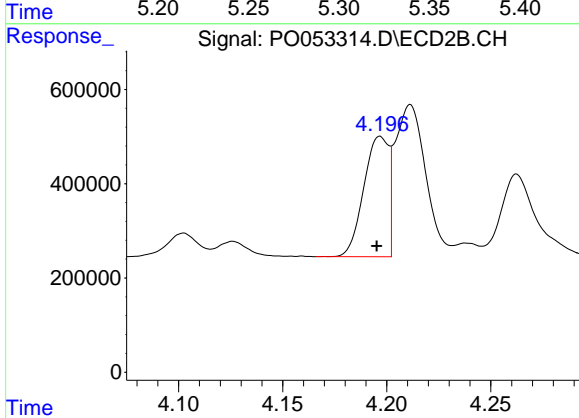


#3 AR-1016-1

R.T.: 5.319 min  
 Delta R.T.: 0.000 min  
 Response: 8769705  
 Conc: 240.40 ng/ml

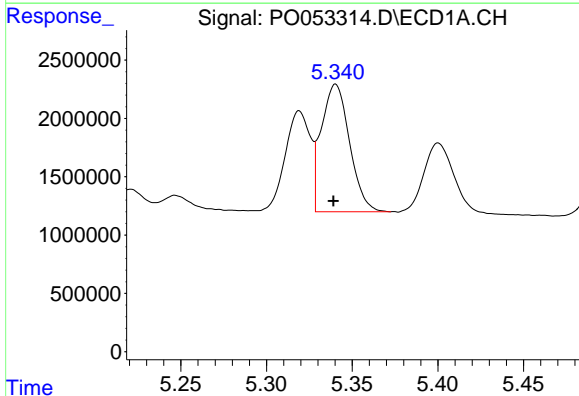
**Instrument :**  
 ECD\_O  
**ClientSampled :**  
 PB116233BS

**Manual Integrations**  
**APPROVED**  
 Sohil  
 1/9/2019 7:43:38 AM



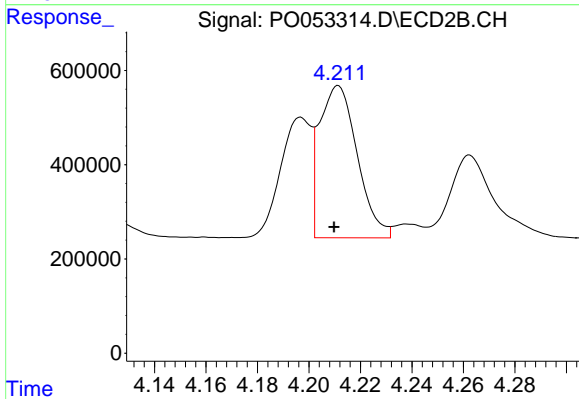
#3 AR-1016-1

R.T.: 4.197 min  
 Delta R.T.: 0.002 min  
 Response: 2112351  
 Conc: 214.25 ng/ml



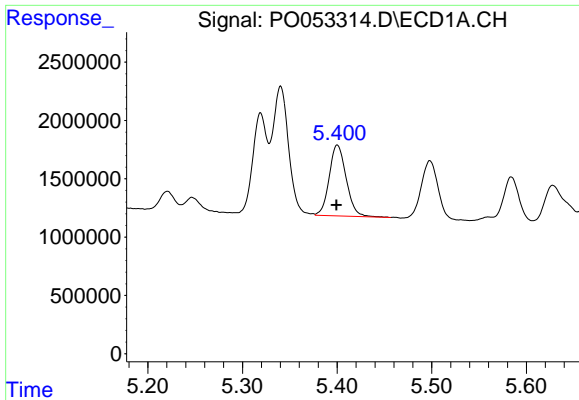
#4 AR-1016-2

R.T.: 5.340 min  
 Delta R.T.: 0.000 min  
 Response: 12424398  
 Conc: 234.69 ng/ml m



#4 AR-1016-2

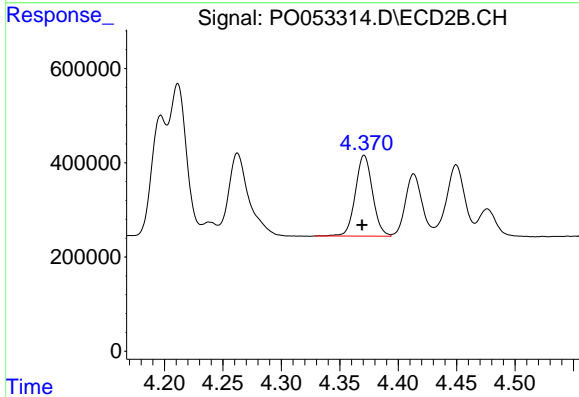
R.T.: 4.211 min  
 Delta R.T.: 0.002 min  
 Response: 3291672  
 Conc: 222.09 ng/ml



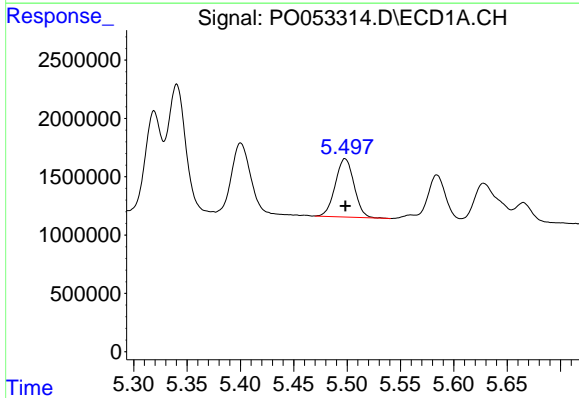
#5 AR-1016-3  
 R.T.: 5.400 min  
 Delta R.T.: 0.001 min  
 Response: 7580678  
 Conc: 236.71 ng/ml

**Instrument :**  
 ECD\_O  
**ClientSampled :**  
 PB116233BS

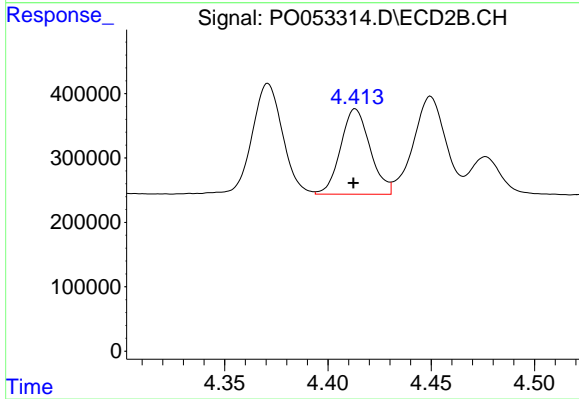
**Manual Integrations**  
**APPROVED**  
 Sohil  
 1/9/2019 7:43:38 AM



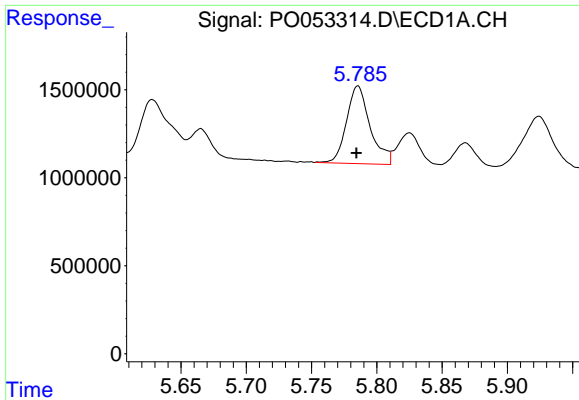
#5 AR-1016-3  
 R.T.: 4.371 min  
 Delta R.T.: 0.002 min  
 Response: 1755592  
 Conc: 218.16 ng/ml



#6 AR-1016-4  
 R.T.: 5.498 min  
 Delta R.T.: 0.000 min  
 Response: 6140832  
 Conc: 237.82 ng/ml



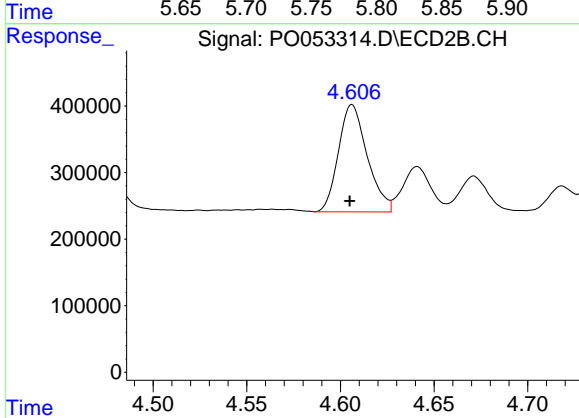
#6 AR-1016-4  
 R.T.: 4.413 min  
 Delta R.T.: 0.001 min  
 Response: 1319804  
 Conc: 218.53 ng/ml



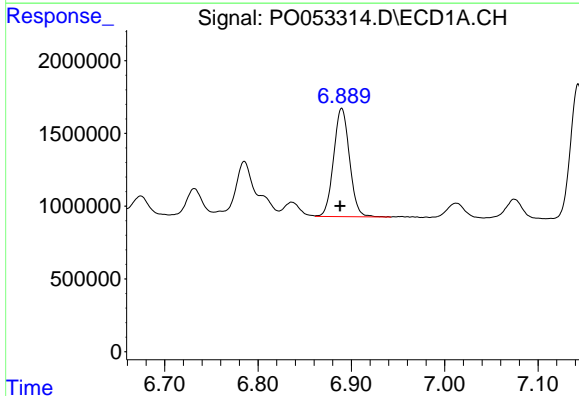
#7 AR-1016-5  
 R.T.: 5.786 min  
 Delta R.T.: 0.001 min  
 Response: 5566672  
 Conc: 235.76 ng/ml

**Instrument :**  
 ECD\_O  
**ClientSampled :**  
 PB116233BS

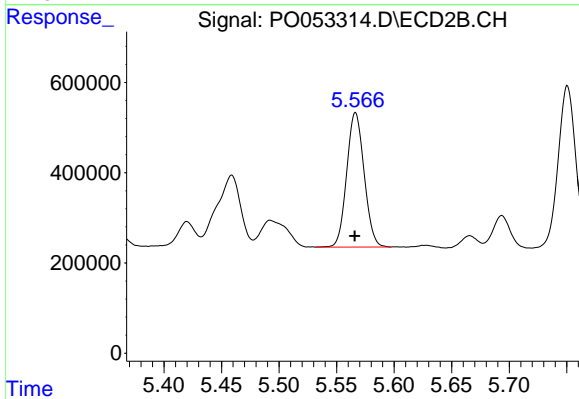
**Manual Integrations**  
**APPROVED**  
 Sohil  
 1/9/2019 7:43:38 AM



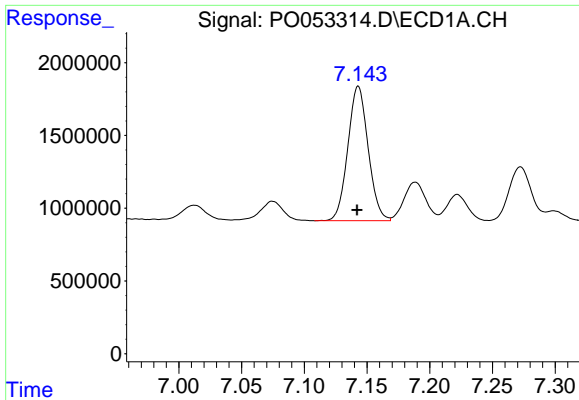
#7 AR-1016-5  
 R.T.: 4.606 min  
 Delta R.T.: 0.001 min  
 Response: 1724541  
 Conc: 219.19 ng/ml



#31 AR-1260-1  
 R.T.: 6.890 min  
 Delta R.T.: 0.002 min  
 Response: 8782707  
 Conc: 224.69 ng/ml



#31 AR-1260-1  
 R.T.: 5.566 min  
 Delta R.T.: 0.000 min  
 Response: 3161511  
 Conc: 212.80 ng/ml

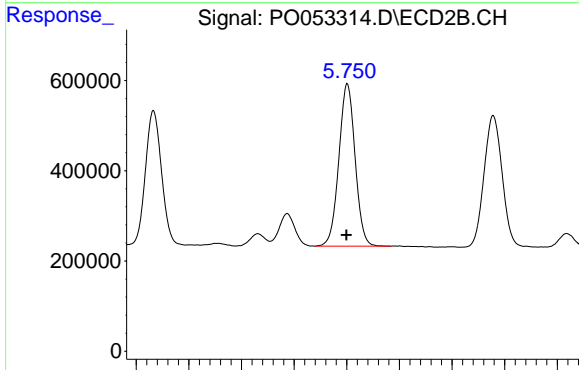


#32 AR-1260-2

R.T.: 7.143 min  
 Delta R.T.: 0.000 min  
 Response: 10432197  
 Conc: 217.81 ng/ml

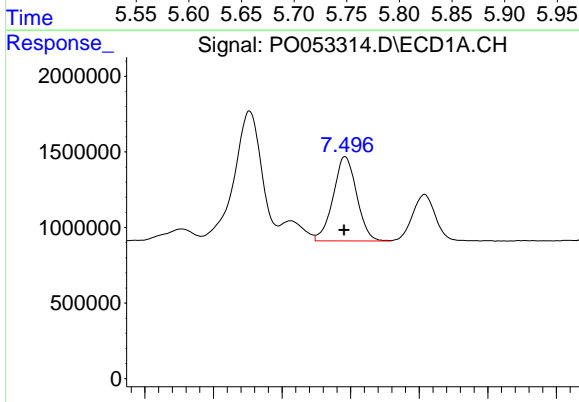
**Instrument :**  
 ECD\_O  
**ClientSampled :**  
 PB116233BS

**Manual Integrations**  
**APPROVED**  
 Sohil  
 1/9/2019 7:43:38 AM



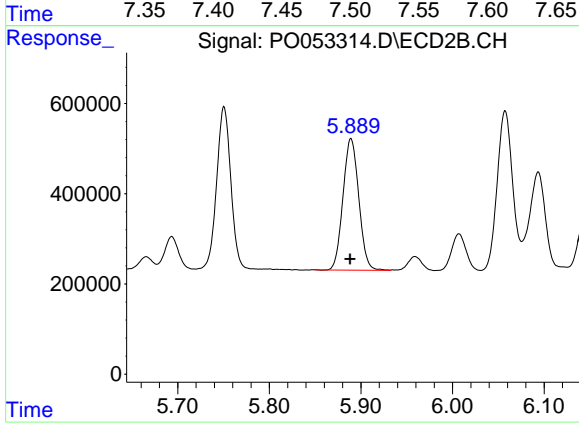
#32 AR-1260-2

R.T.: 5.751 min  
 Delta R.T.: 0.001 min  
 Response: 3857455  
 Conc: 213.67 ng/ml



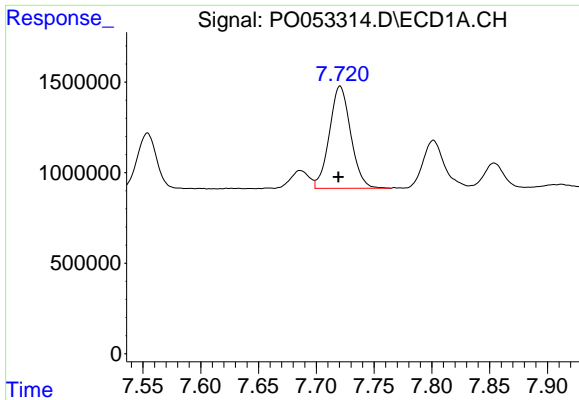
#33 AR-1260-3

R.T.: 7.496 min  
 Delta R.T.: 0.000 min  
 Response: 6643472  
 Conc: 223.21 ng/ml



#33 AR-1260-3

R.T.: 5.889 min  
 Delta R.T.: 0.000 min  
 Response: 3494905  
 Conc: 213.84 ng/ml

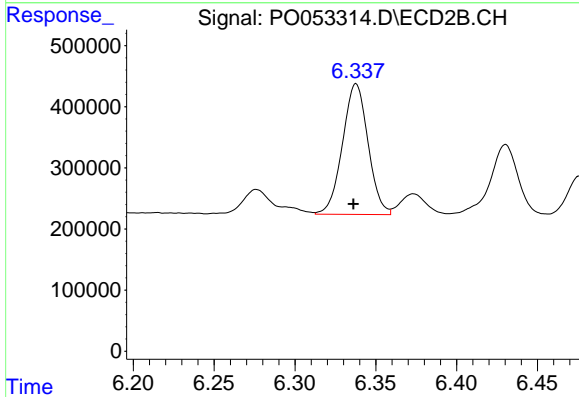


#34 AR-1260-4

R.T.: 7.721 min  
 Delta R.T.: 0.001 min  
 Response: 7264293  
 Conc: 215.50 ng/ml

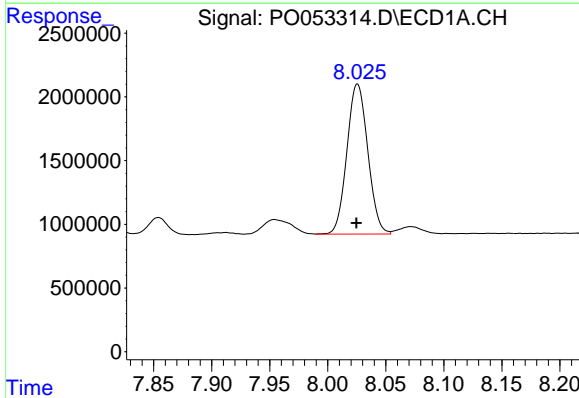
**Instrument :**  
 ECD\_O  
**ClientSampled :**  
 PB116233BS

**Manual Integrations**  
**APPROVED**  
 Sohil  
 1/9/2019 7:43:38 AM



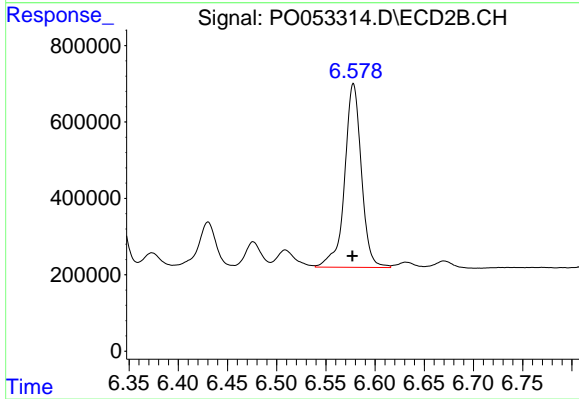
#34 AR-1260-4

R.T.: 6.338 min  
 Delta R.T.: 0.002 min  
 Response: 2356050  
 Conc: 224.75 ng/ml



#35 AR-1260-5

R.T.: 8.026 min  
 Delta R.T.: 0.000 min  
 Response: 14760066  
 Conc: 216.06 ng/ml



#35 AR-1260-5

R.T.: 6.578 min  
 Delta R.T.: 0.001 min  
 Response: 5701040  
 Conc: 221.53 ng/ml