

Data Path : Z:\pestpcbsrv\HPCHEM1\ECD_0\Data\P0010819\
 Data File : P0053324.D
 Signal(s) : Signal #1: ECD1A.CH Signal #2: ECD2B.CH
 Acq On : 08 Jan 2019 18:16
 Operator : SM/SJ
 Sample : K1074-15
 Misc :
 ALS Vial : 11 Sample Multiplier: 1

Instrument :
 ECD_0
 ClientSampled :
 W12-8

Manual Integrations
 APPROVED

Sohil
 1/9/2019 7:43:39 AM

Integration File signal 1: autoint1.e
 Integration File signal 2: autoint2.e
 Quant Time: Jan 09 03:43:44 2019
 Quant Method : Z:\pestpcbsrv\HPCHEM1\ECD_0\methods\P0010819.M
 Quant Title : GC EXTRACTABLES
 QLast Update : Wed Jan 09 03:34:05 2019
 Response via : Initial Calibration
 Integrator: ChemStation 6890 Scale Mode: Small noise peaks clipped

Volume Inj. : 2 µl
 Signal #1 Phase : ZB-MR1 Signal #2 Phase: ZB-MR2
 Signal #1 Info : 30Mx0.32mmx 0.50µ Signal #2 Info : 30M x 0.32mm x 0.25µm

Compound	RT#1	RT#2	Resp#1	Resp#2	ng/ml	ng/ml

System Monitoring Compounds						
1) SA Tetrachlo...	4.170	3.208	25652249	4495545	19.197m	17.979
2) SA Decachlor...	9.633	7.852	11153557	3469059	14.121	15.148

Target Compounds

(f)=RT Delta > 1/2 Window (#)=Amounts differ by > 25% (m)=manual int.

Data Path : Z:\pestpcbsrv\HPCHEM1\ECD_0\Data\P0010819\
 Data File : P0053324.D
 Signal(s) : Signal #1: ECD1A.CH Signal #2: ECD2B.CH
 Acq On : 08 Jan 2019 18:16
 Operator : SM/SJ
 Sample : K1074-15
 Misc :
 ALS Vial : 11 Sample Multiplier: 1

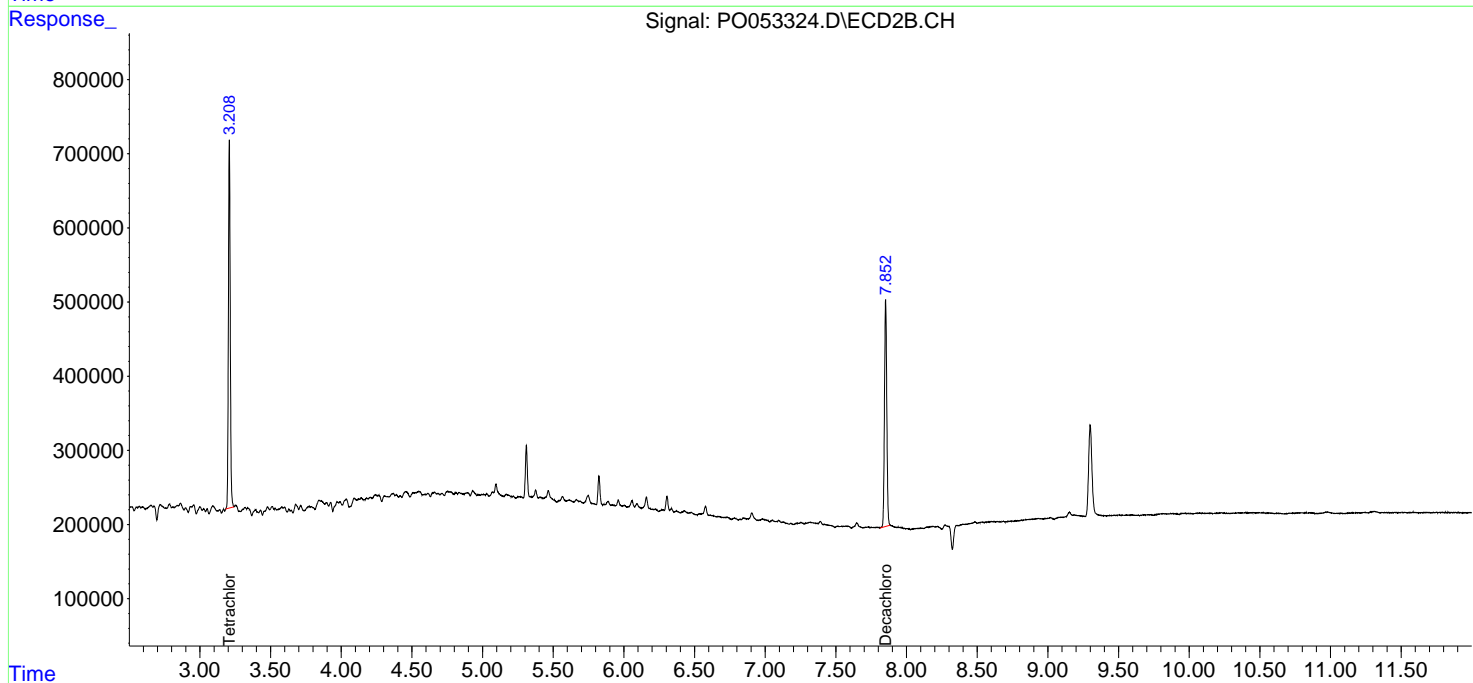
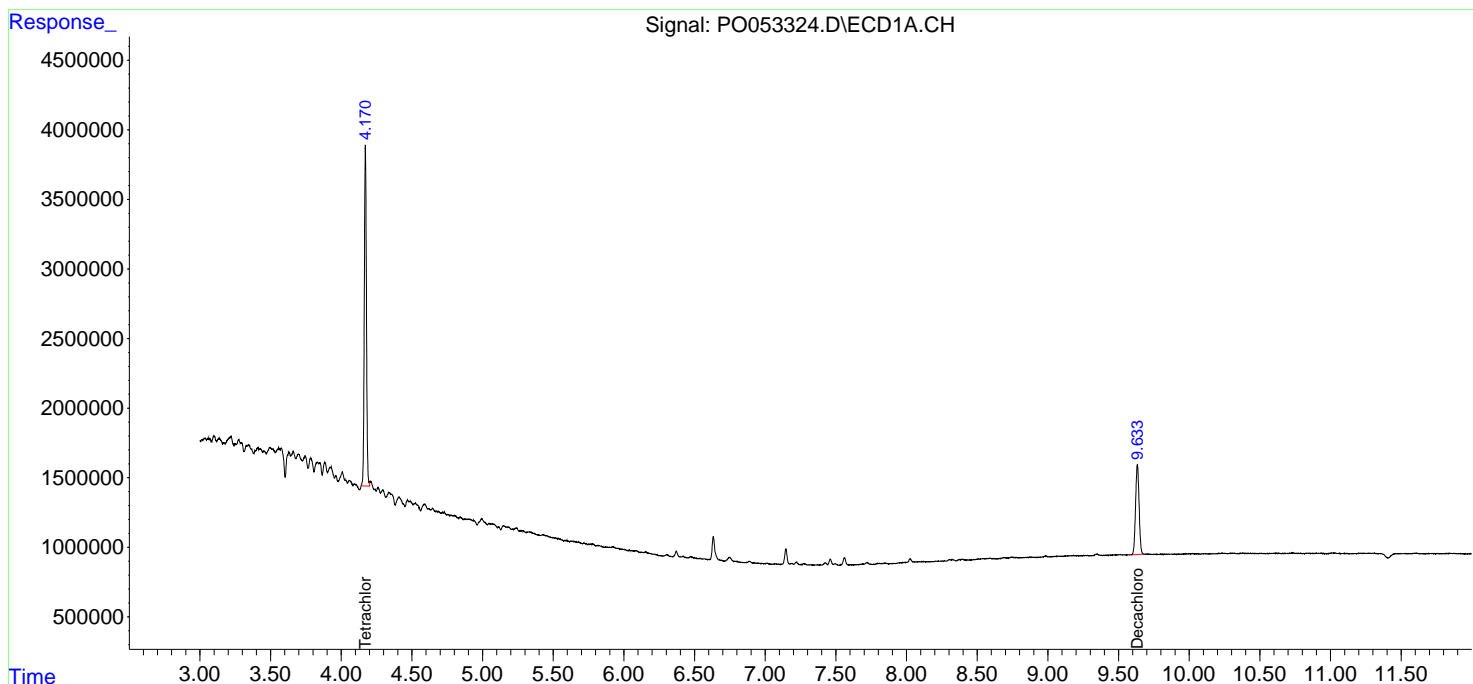
Instrument :
 ECD_O
 ClientSampled :
 W12-8

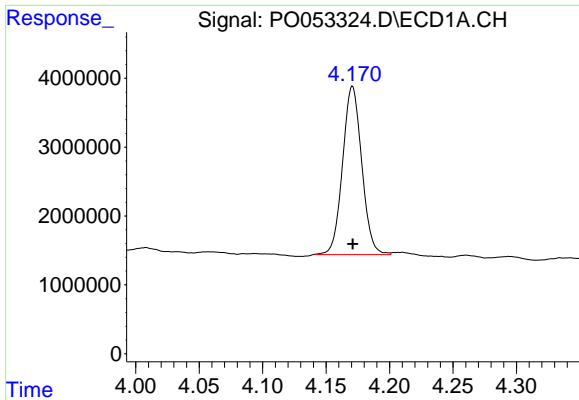
Manual Integrations
 APPROVED

Sohil
 1/9/2019 7:43:39 AM

Integration File signal 1: autoint1.e
 Integration File signal 2: autoint2.e
 Quant Time: Jan 09 03:43:44 2019
 Quant Method : Z:\pestpcbsrv\HPCHEM1\ECD_0\methods\P0010819.M
 Quant Title : GC EXTRACTABLES
 QLast Update : Wed Jan 09 03:34:05 2019
 Response via : Initial Calibration
 Integrator: ChemStation 6890 Scale Mode: Small noise peaks clipped

Volume Inj. : 2 µl
 Signal #1 Phase : ZB-MR1 Signal #2 Phase: ZB-MR2
 Signal #1 Info : 30Mx0.32mmx 0.50µm Signal #2 Info : 30M x 0.32mm x 0.25µm





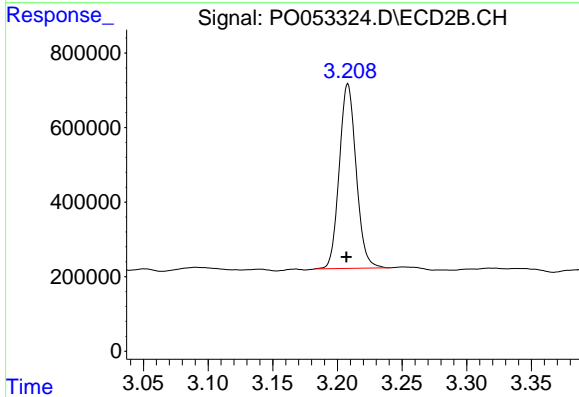
#1 Tetrachloro-m-xylene

R.T.: 4.170 min
 Delta R.T.: 0.000 min
 Response: 25652249
 Conc: 19.20 ng/ml m

Instrument :
 ECD_O
 ClientSampled :
 W12-8

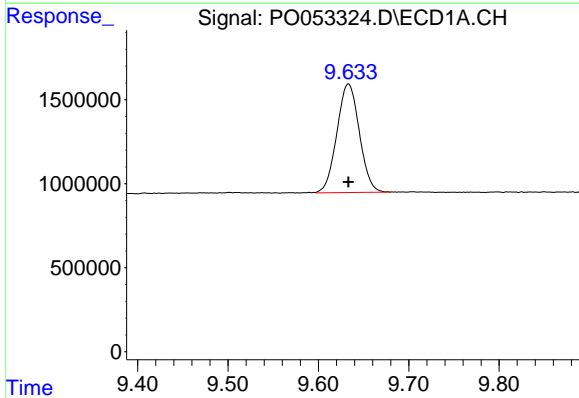
Manual Integrations
 APPROVED

Sohil
 1/9/2019 7:43:39 AM



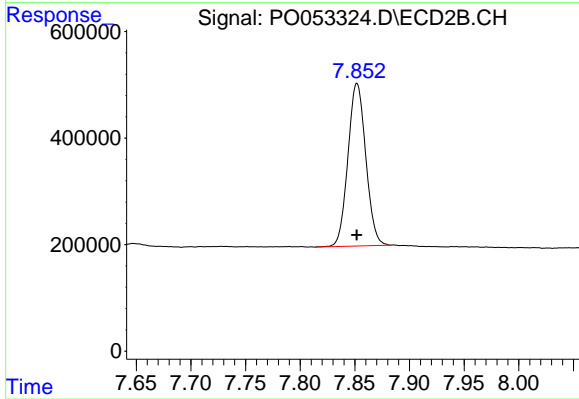
#1 Tetrachloro-m-xylene

R.T.: 3.208 min
 Delta R.T.: 0.001 min
 Response: 4495545
 Conc: 17.98 ng/ml



#2 Decachlorobiphenyl

R.T.: 9.633 min
 Delta R.T.: 0.000 min
 Response: 11153557
 Conc: 14.12 ng/ml



#2 Decachlorobiphenyl

R.T.: 7.852 min
 Delta R.T.: 0.000 min
 Response: 3469059
 Conc: 15.15 ng/ml