

Data Path : P:\HPCHEM1\ECD O\Data\PO010918\
 Data File : PO041246.D
 Signal(s) : Signal #1: ECD1A.CH Signal #2: ECD2B.CH
 Acq On : 09 Jan 2018 11:28
 Operator : SM/UA
 Sample : J1025-08
 Misc :
 ALS Vial : 7 Sample Multiplier: 1

Instrument :
 ECD_O
 ClientSampleId :
 EPE-106-2(75-77)

Integration File signal 1: autoint1.e
 Integration File signal 2: autoint2.e
 Quant Time: Jan 09 14:09:16 2018
 Quant Method : P:\HPCHEM1\ECD_O\methods\PO122017.M
 Quant Title : GC EXTRACTABLES
 QLast Update : Wed Dec 20 03:23:29 2017
 Response via : Initial Calibration
 Integrator: ChemStation 6890 Scale Mode: Small noise peaks clipped

Volume Inj. : 2 µl
 Signal #1 Phase : ZB-MR1 Signal #2 Phase: ZB-MR2
 Signal #1 Info : 30Mx0.32mmx 0.50µ Signal #2 Info : 30M x 0.32mm x 0.25µm

Compound	RT#1	RT#2	Resp#1	Resp#2	nq/ml	nq/ml

System Monitoring Compounds						
1) SA Tetrachlo...	4.131	3.371	3253529	4981038	15.691	16.160m
2) SA Decachlor...	9.545	8.175	3104372	4672081	15.160	13.192m

Target Compounds

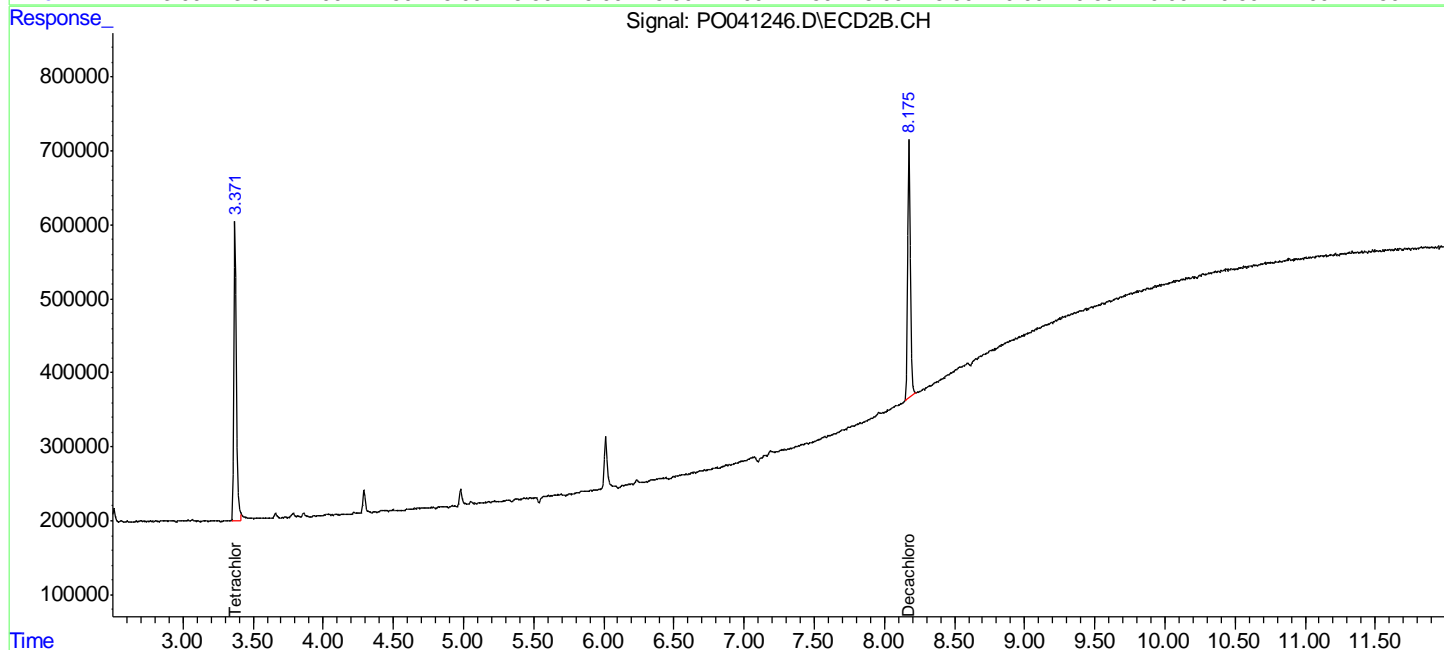
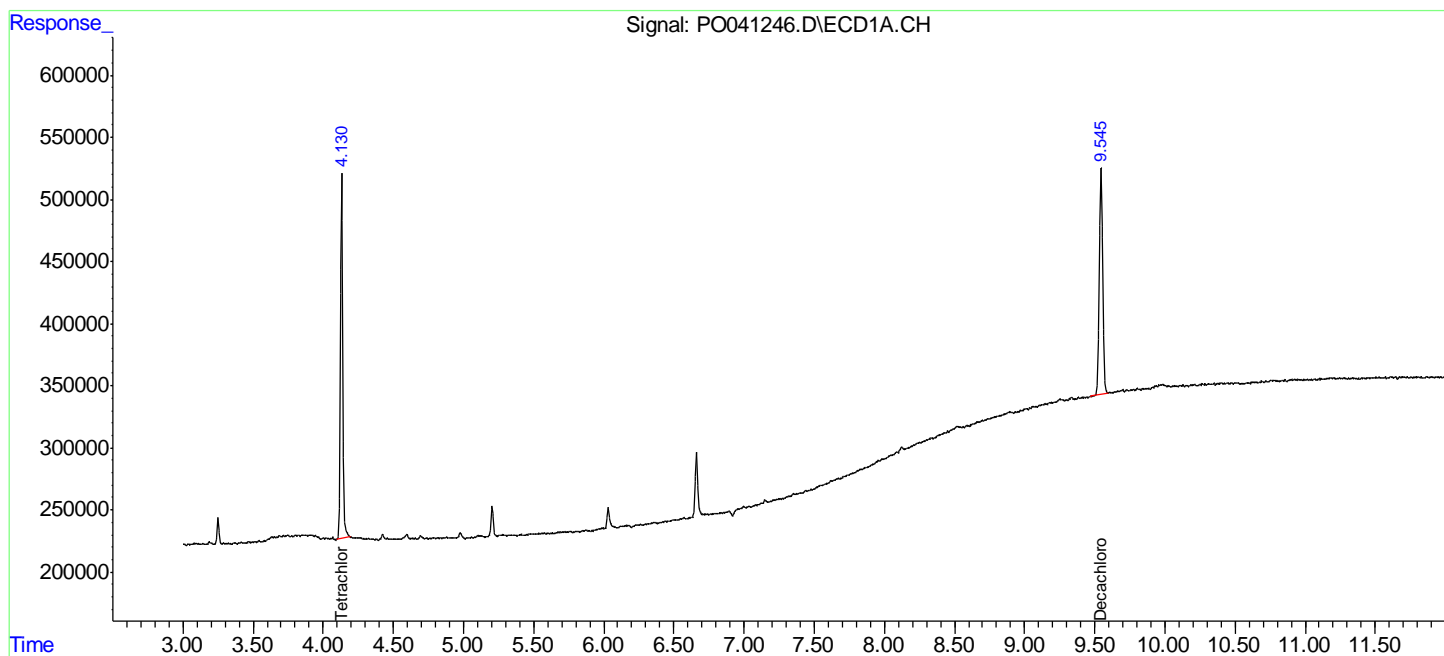
 (f)=RT Delta > 1/2 Window (#)=Amounts differ by > 25% (m)=manual int.

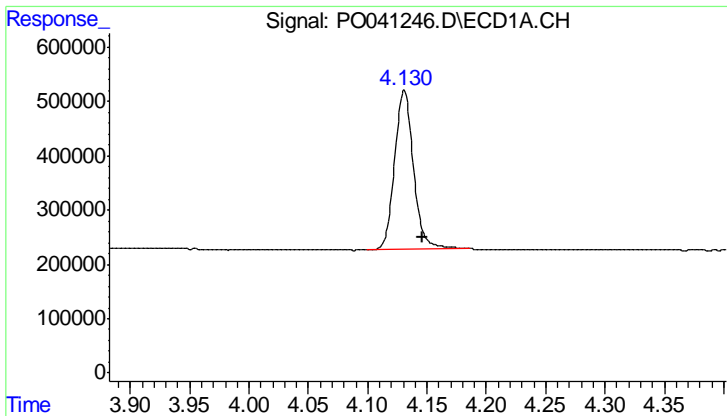
Data Path : P:\HPCHEM1\ECD O\Data\PO010918\
 Data File : PO041246.D
 Signal(s) : Signal #1: ECD1A.CH Signal #2: ECD2B.CH
 Acq On : 09 Jan 2018 11:28
 Operator : SM/UA
 Sample : J1025-08
 Misc :
 ALS Vial : 7 Sample Multiplier: 1

Instrument :
 ECD_O
 ClientSampleId :
 EPE-106-2(75-77)

Integration File signal 1: autoint1.e
 Integration File signal 2: autoint2.e
 Quant Time: Jan 09 14:09:16 2018
 Quant Method : P:\HPCHEM1\ECD_O\methods\PO122017.M
 Quant Title : GC EXTRACTABLES
 QLast Update : Wed Dec 20 03:23:29 2017
 Response via : Initial Calibration
 Integrator: ChemStation 6890 Scale Mode: Small noise peaks clipped

Volume Inj. : 2 ul
 Signal #1 Phase : ZB-MR1 Signal #2 Phase: ZB-MR2
 Signal #1 Info : 30Mx0.32mmx 0.50µ Signal #2 Info : 30M x 0.32mm x 0.25µm

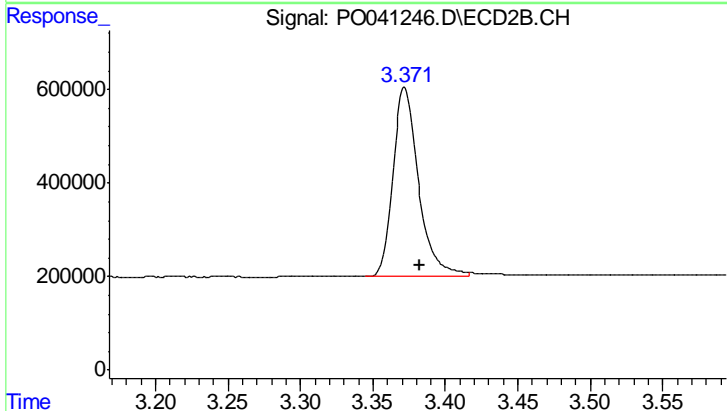




#1 Tetrachloro-m-xylene

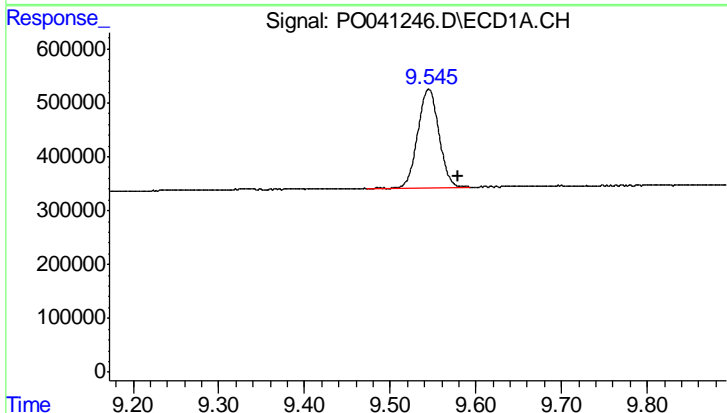
R.T.: 4.131 min
 Delta R.T.: -0.015 min
 Response: 3253529
 Conc: 15.69 ng/ml

Instrument :
 ECD_O
 ClientSampled :
 EPE-106-2(75-77)



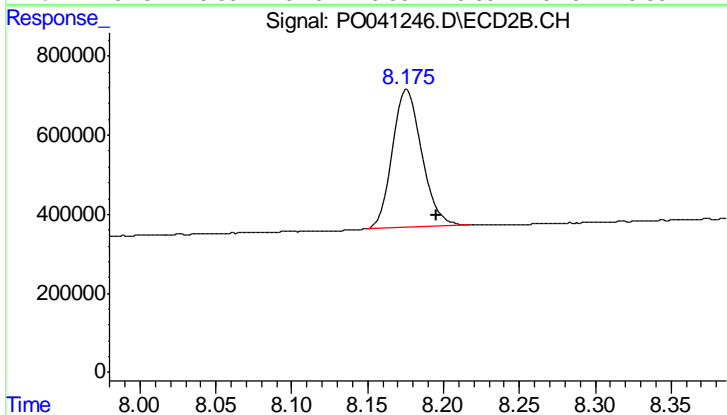
#1 Tetrachloro-m-xylene

R.T.: 3.371 min
 Delta R.T.: -0.011 min
 Response: 4981038
 Conc: 16.16 ng/ml m



#2 Decachlorobiphenyl

R.T.: 9.545 min
 Delta R.T.: -0.034 min
 Response: 3104372
 Conc: 15.16 ng/ml



#2 Decachlorobiphenyl

R.T.: 8.175 min
 Delta R.T.: -0.020 min
 Response: 4672081
 Conc: 13.19 ng/ml m