

Data Path : P:\HPCHEM1\ECD_O\Data\PO011418\
 Data File : PO041414.D
 Signal(s) : Signal #1: ECD1A.CH Signal #2: ECD2B.CH
 Acq On : 12 Jan 2018 17:17
 Operator : SM/UA
 Sample : PB105472BS
 Misc :
 ALS Vial : 11 Sample Multiplier: 1

Instrument :
 ECD_O
ClientSampled :
 PB105472BS

Manual Integrations
APPROVED
 ugo
 1/15/2018 12:09:15 PM

Integration File signal 1: autoint1.e
 Integration File signal 2: autoint2.e
 Quant Time: Jan 12 23:34:47 2018
 Quant Method : P:\HPCHEM1\ECD_O\methods\PO122017.M
 Quant Title : GC EXTRACTABLES
 QLast Update : Wed Dec 20 03:23:29 2017
 Response via : Initial Calibration
 Integrator: ChemStation 6890 Scale Mode: Small noise peaks clipped

Volume Inj. : 2 µl
 Signal #1 Phase : ZB-MR1 Signal #2 Phase: ZB-MR2
 Signal #1 Info : 30Mx0.32mmx 0.50µ Signal #2 Info : 30M x 0.32mm x 0.25µm

Compound	RT#1	RT#2	Resp#1	Resp#2	ng/ml	ng/ml

System Monitoring Compounds						
1) SA Tetrachlo...	4.129	3.371	3243393	5087090	15.642	16.504m
2) SA Decachlor...	9.544	8.173	3447377	5670146	16.835	16.011m
Target Compounds						
3) L1 AR-1016-1	4.999	4.195	863211	1348255	147.107	147.848
4) L1 AR-1016-2	5.340	4.590	1187196	1755349	150.535	171.928m
5) L1 AR-1016-3	5.435	4.633	938781	1560874	150.282	194.702m#
6) L1 AR-1016-4	5.723	4.837	925294	1592360	146.369	141.347
7) L1 AR-1016-5	5.859	4.978	755261	1413246	111.022	125.923
31) L7 AR-1260-1	6.825	5.834	1722098	3742324	128.047	145.210
32) L7 AR-1260-2	7.077	6.166	2167364	4163759	110.123m	134.134m
33) L7 AR-1260-3	7.352	6.337	2615238	5321338	126.168m	142.911
34) L7 AR-1260-4	7.953	6.868	3656545	8404870	117.844	121.587
35) L7 AR-1260-5	8.241	7.205	2306932	5659513	130.158m	124.631

(f)=RT Delta > 1/2 Window (#)=Amounts differ by > 25% (m)=manual int.

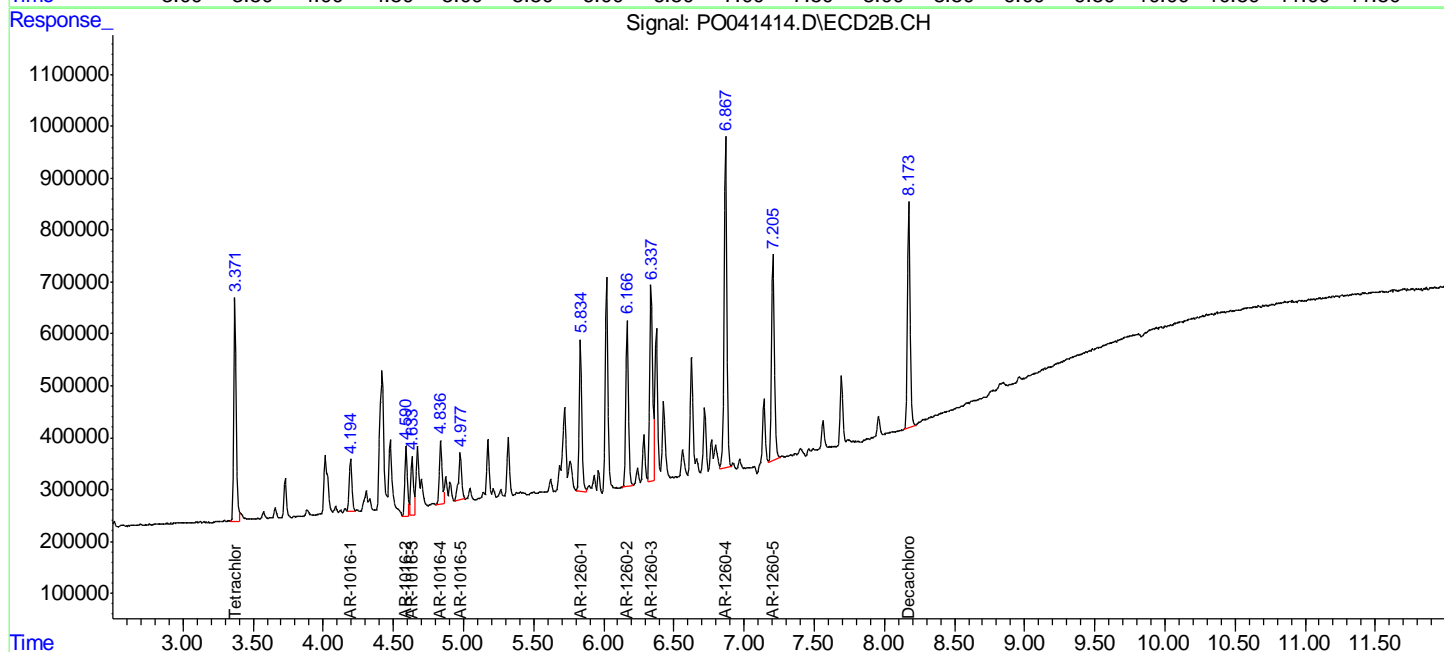
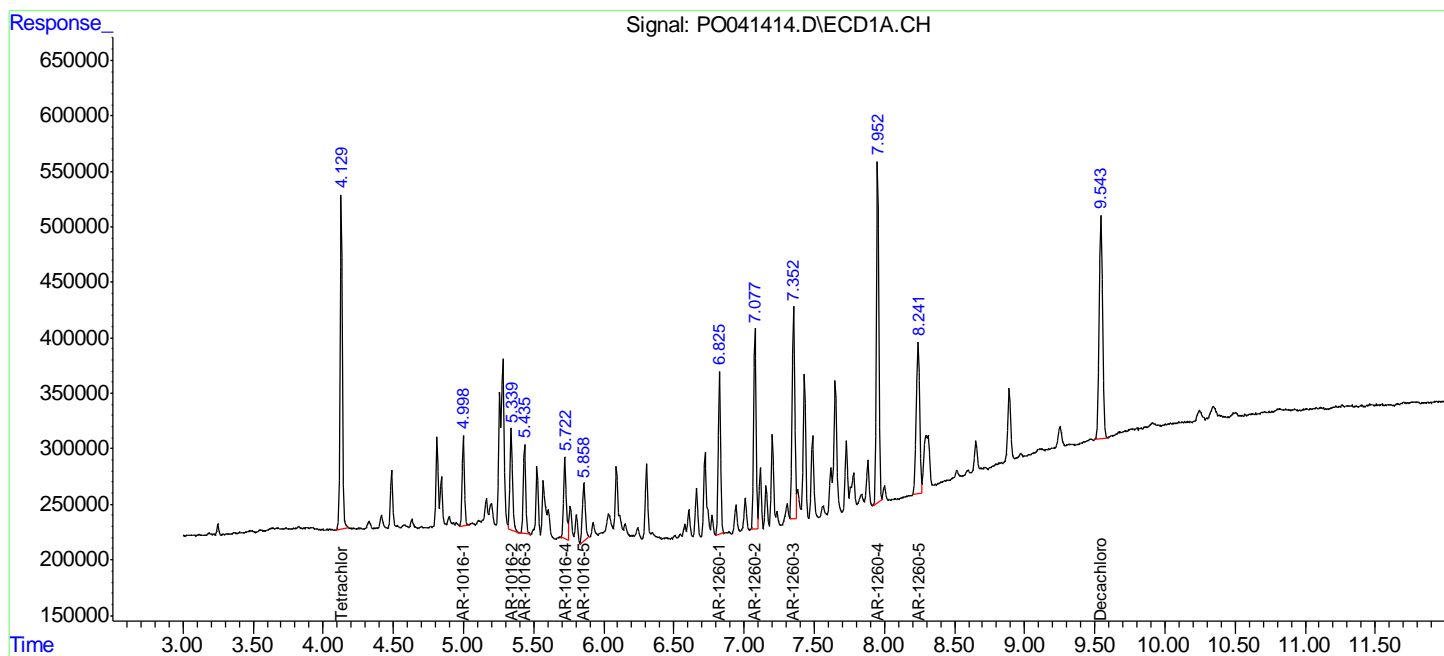
Data Path : P:\HPCHEM1\ECD_O\Data\PO011418\
 Data File : PO041414.D
 Signal(s) : Signal #1: ECD1A.CH Signal #2: ECD2B.CH
 Acq On : 12 Jan 2018 17:17
 Operator : SM/UA
 Sample : PB105472BS
 Misc :
 ALS Vial : 11 Sample Multiplier: 1

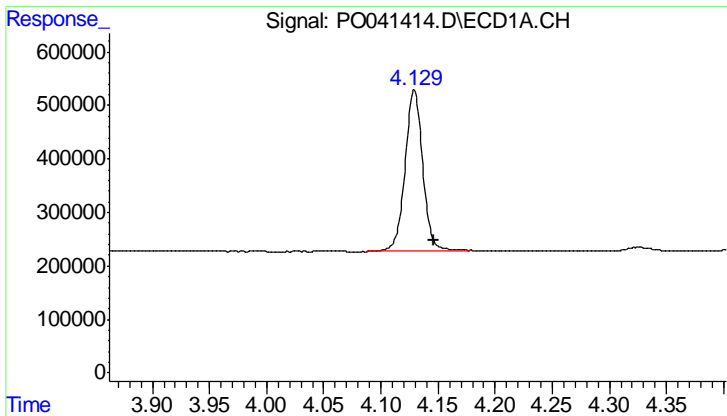
Instrument :
 ECD_O
Client Sampled :
 PB105472BS

Manual Integrations
APPROVED
 ugo
 1/15/2018 12:09:15 PM

Integration File signal 1: autoint1.e
 Integration File signal 2: autoint2.e
 Quant Time: Jan 12 23:34:47 2018
 Quant Method : P:\HPCHEM1\ECD_O\methods\PO122017.M
 Quant Title : GC EXTRACTABLES
 QLast Update : Wed Dec 20 03:23:29 2017
 Response via : Initial Calibration
 Integrator: ChemStation 6890 Scale Mode: Small noise peaks clipped

Volume Inj. : 2 µl
 Signal #1 Phase : ZB-MR1 Signal #2 Phase: ZB-MR2
 Signal #1 Info : 30Mx0.32mmx 0.50µ Signal #2 Info : 30M x 0.32mm x 0.25µm



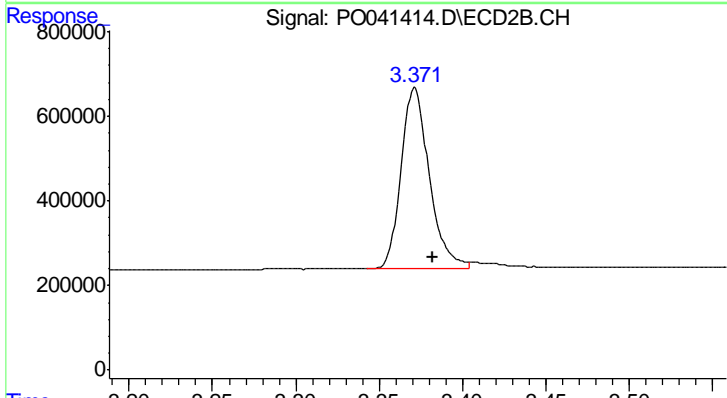


#1 Tetrachloro-m-xylene

R.T.: 4.129 min
 Delta R.T.: -0.017 min
 Response: 3243393
 Conc: 15.64 ng/ml

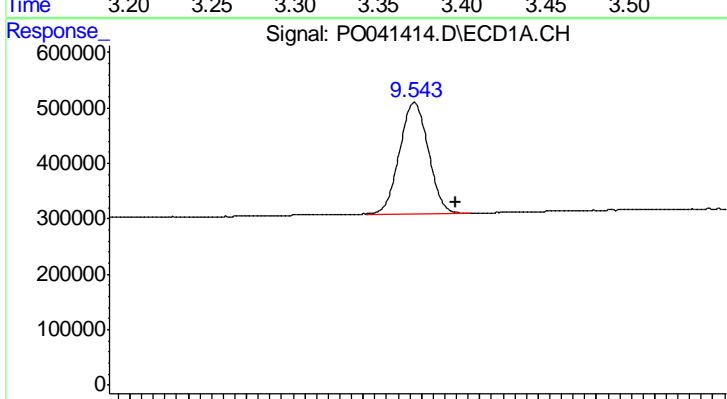
Instrument :
 ECD_O
 ClientSampled :
 PB105472BS

Manual Integrations
 APPROVED
 ugo
 1/15/2018 12:09:15 PM



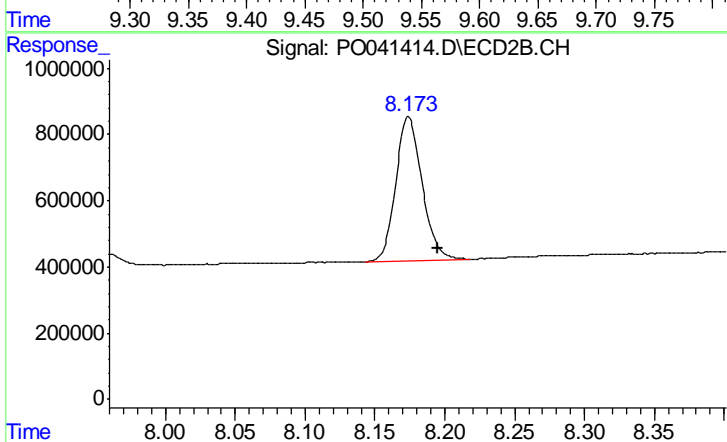
#1 Tetrachloro-m-xylene

R.T.: 3.371 min
 Delta R.T.: -0.012 min
 Response: 5087090
 Conc: 16.50 ng/ml m



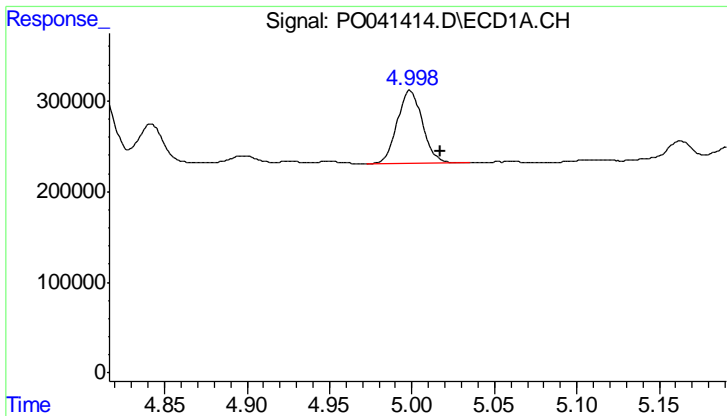
#2 Decachlorobiphenyl

R.T.: 9.544 min
 Delta R.T.: -0.035 min
 Response: 3447377
 Conc: 16.83 ng/ml



#2 Decachlorobiphenyl

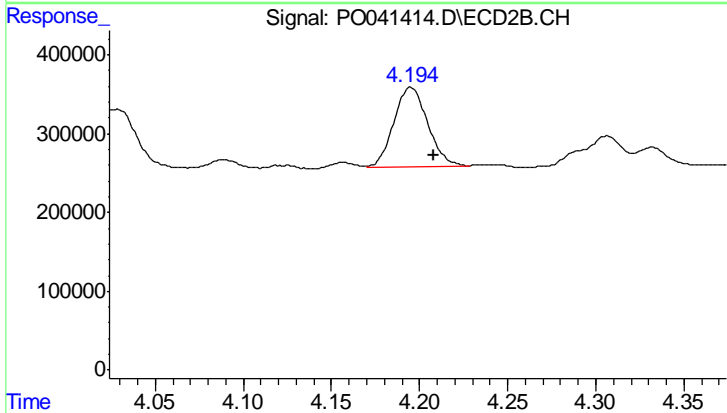
R.T.: 8.173 min
 Delta R.T.: -0.022 min
 Response: 5670146
 Conc: 16.01 ng/ml m



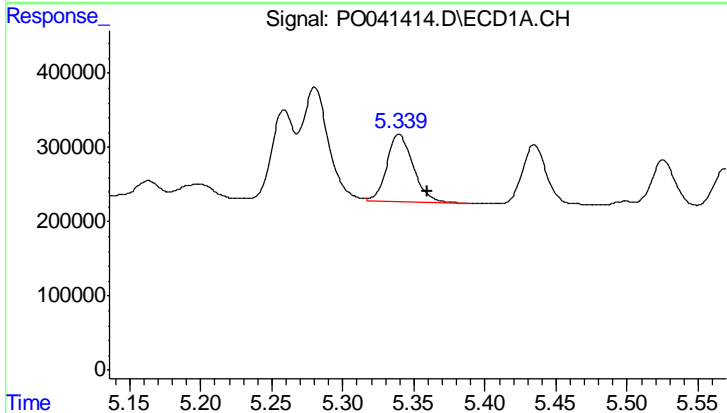
#3 AR-1016-1
 R.T.: 4.999 min
 Delta R.T.: -0.018 min
 Response: 863211
 Conc: 147.11 ng/ml

Instrument :
 ECD_O
ClientSampled :
 PB105472BS

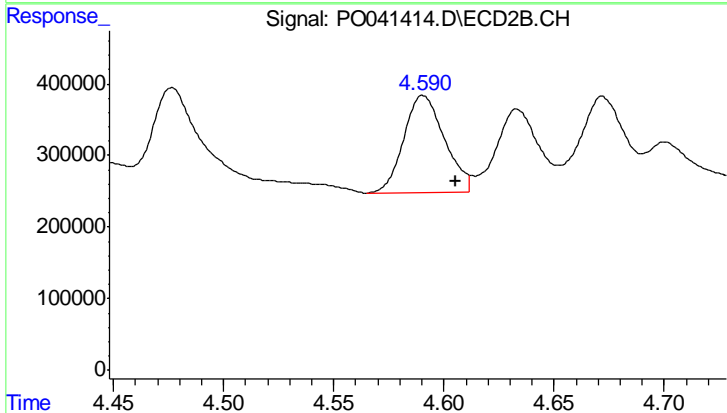
Manual Integrations
APPROVED
 ugo
 1/15/2018 12:09:15 PM



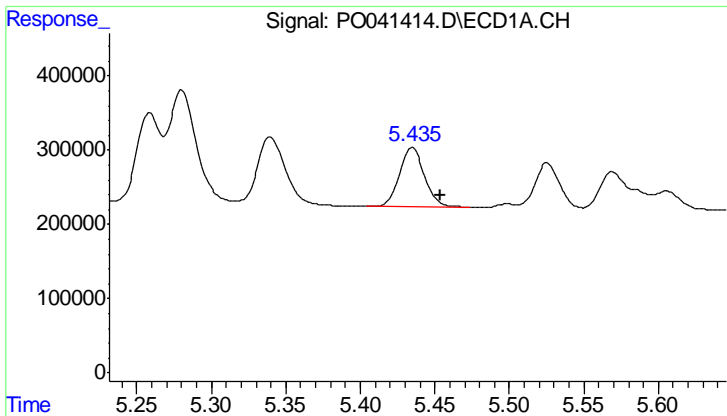
#3 AR-1016-1
 R.T.: 4.195 min
 Delta R.T.: -0.013 min
 Response: 1348255
 Conc: 147.85 ng/ml



#4 AR-1016-2
 R.T.: 5.340 min
 Delta R.T.: -0.020 min
 Response: 1187196
 Conc: 150.54 ng/ml



#4 AR-1016-2
 R.T.: 4.590 min
 Delta R.T.: -0.015 min
 Response: 1755349
 Conc: 171.93 ng/ml m



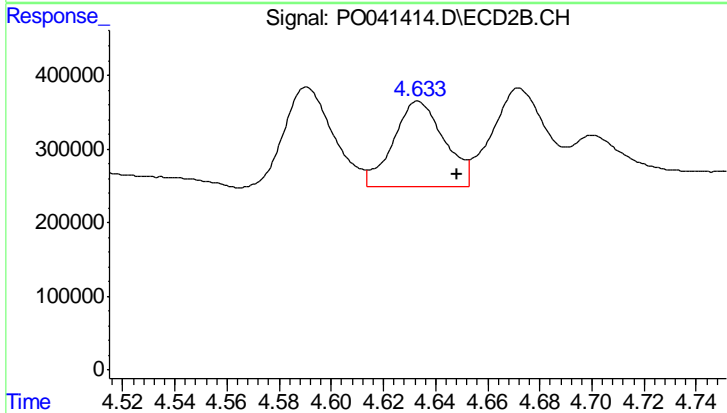
#5 AR-1016-3

R.T.: 5.435 min
 Delta R.T.: -0.019 min
 Response: 938781
 Conc: 150.28 ng/ml

Instrument :
 ECD_O
 ClientSampleId :
 PB105472BS

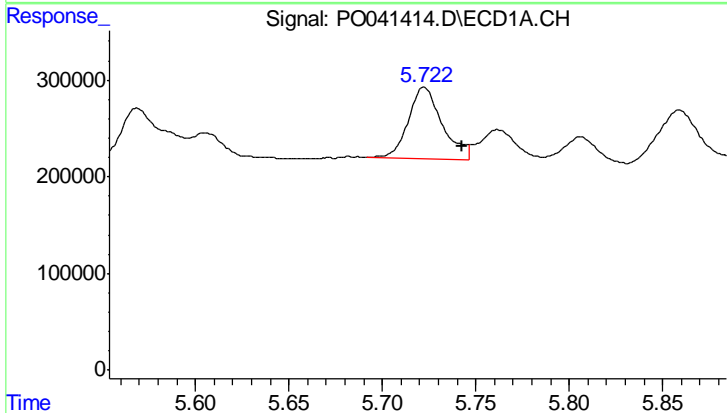
Manual Integrations
 APPROVED

ugo
 1/15/2018 12:09:15 PM



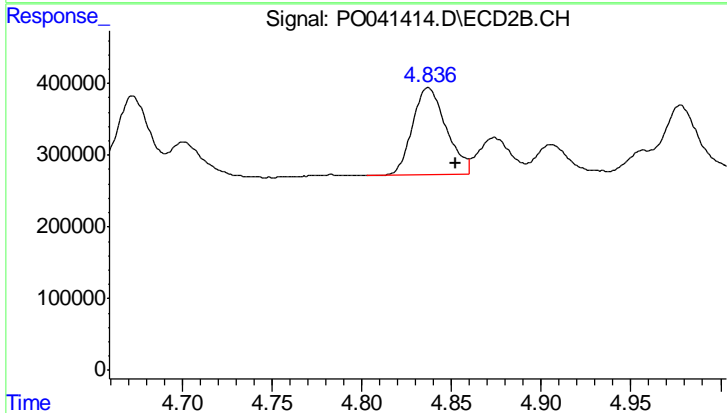
#5 AR-1016-3

R.T.: 4.633 min
 Delta R.T.: -0.015 min
 Response: 1560874
 Conc: 194.70 ng/ml m



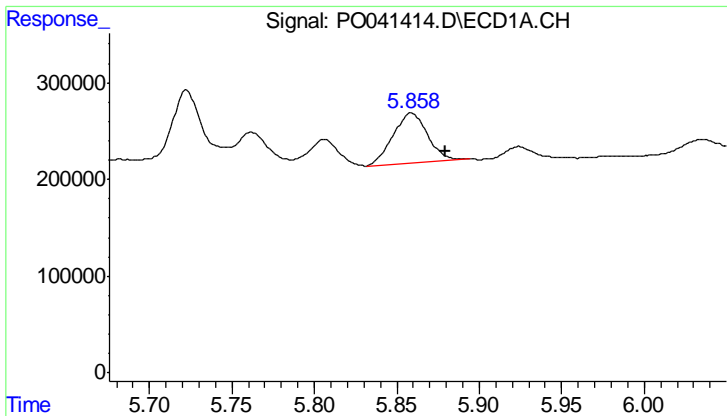
#6 AR-1016-4

R.T.: 5.723 min
 Delta R.T.: -0.020 min
 Response: 925294
 Conc: 146.37 ng/ml



#6 AR-1016-4

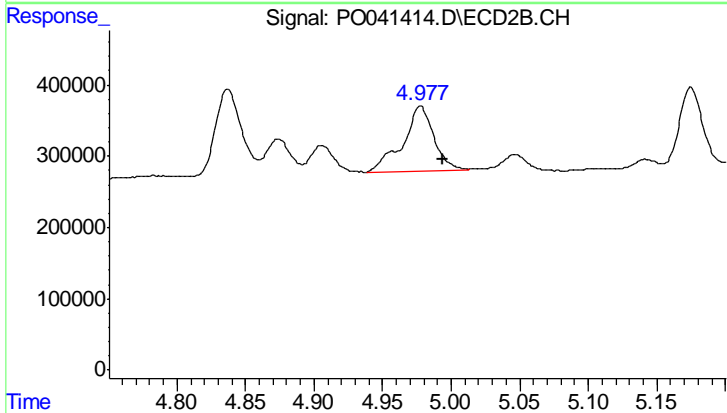
R.T.: 4.837 min
 Delta R.T.: -0.015 min
 Response: 1592360
 Conc: 141.35 ng/ml



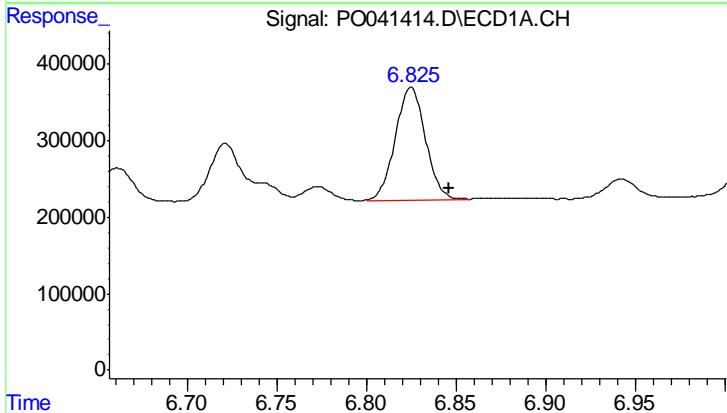
#7 AR-1016-5
 R.T.: 5.859 min
 Delta R.T.: -0.021 min
 Response: 755261
 Conc: 111.02 ng/ml

Instrument :
 ECD_O
ClientSampled :
 PB105472BS

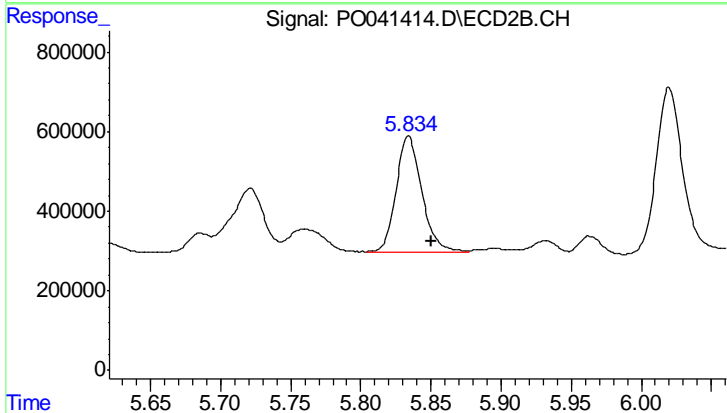
Manual Integrations
APPROVED
 ugo
 1/15/2018 12:09:15 PM



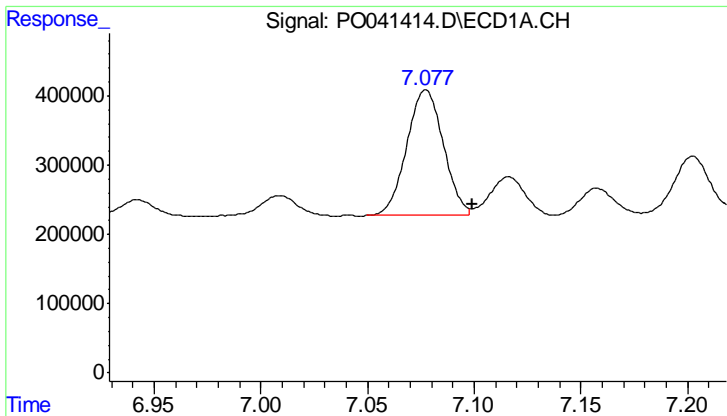
#7 AR-1016-5
 R.T.: 4.978 min
 Delta R.T.: -0.016 min
 Response: 1413246
 Conc: 125.92 ng/ml



#31 AR-1260-1
 R.T.: 6.825 min
 Delta R.T.: -0.021 min
 Response: 1722098
 Conc: 128.05 ng/ml



#31 AR-1260-1
 R.T.: 5.834 min
 Delta R.T.: -0.017 min
 Response: 3742324
 Conc: 145.21 ng/ml



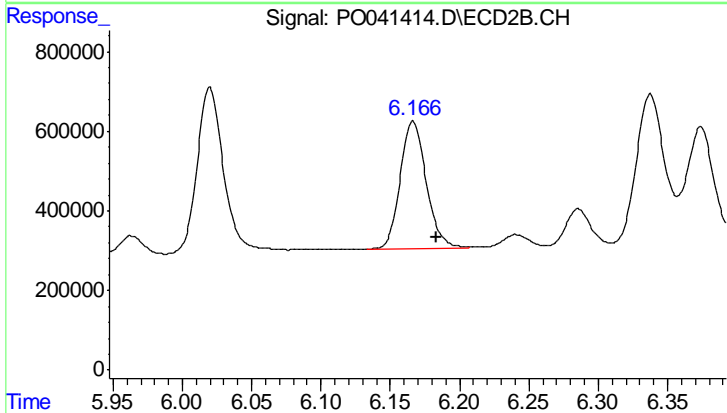
#32 AR-1260-2

R.T.: 7.077 min
 Delta R.T.: -0.022 min
 Response: 2167364
 Conc: 110.12 ng/ml

Instrument :
 ECD_O
 ClientSampled :
 PB105472BS

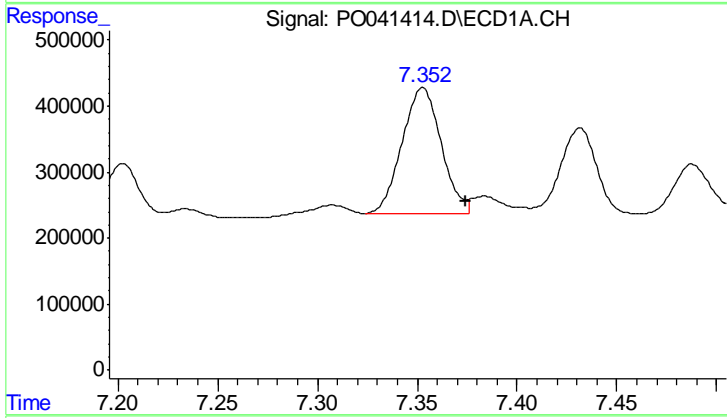
Manual Integrations
 APPROVED

ugo
 1/15/2018 12:09:15 PM



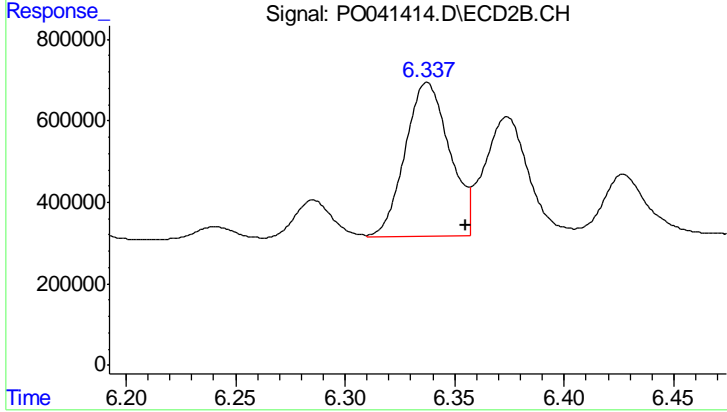
#32 AR-1260-2

R.T.: 6.166 min
 Delta R.T.: -0.018 min
 Response: 4163759
 Conc: 134.13 ng/ml m



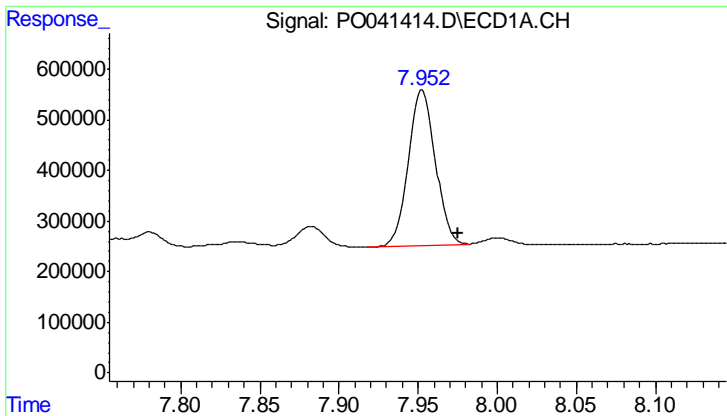
#33 AR-1260-3

R.T.: 7.352 min
 Delta R.T.: -0.022 min
 Response: 2615238
 Conc: 126.17 ng/ml m



#33 AR-1260-3

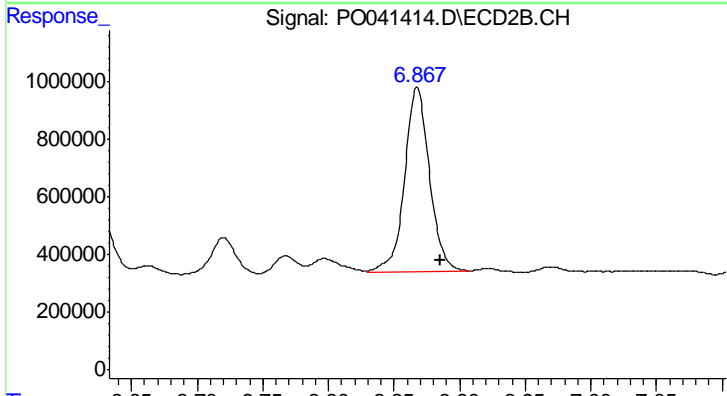
R.T.: 6.337 min
 Delta R.T.: -0.017 min
 Response: 5321338
 Conc: 142.91 ng/ml



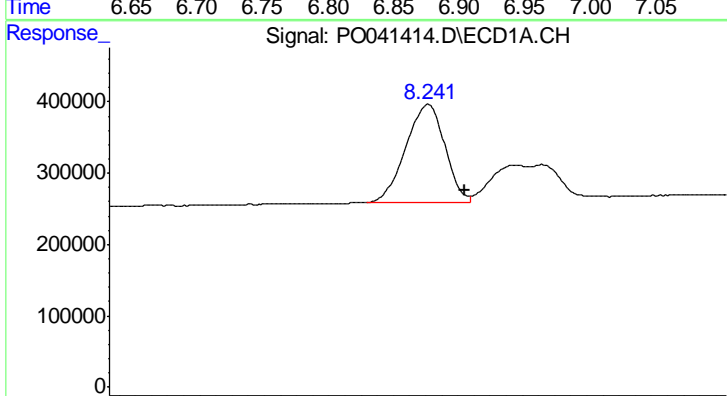
#34 AR-1260-4
 R.T.: 7.953 min
 Delta R.T.: -0.023 min
 Response: 3656545
 Conc: 117.84 ng/ml

Instrument :
 ECD_O
ClientSampled :
 PB105472BS

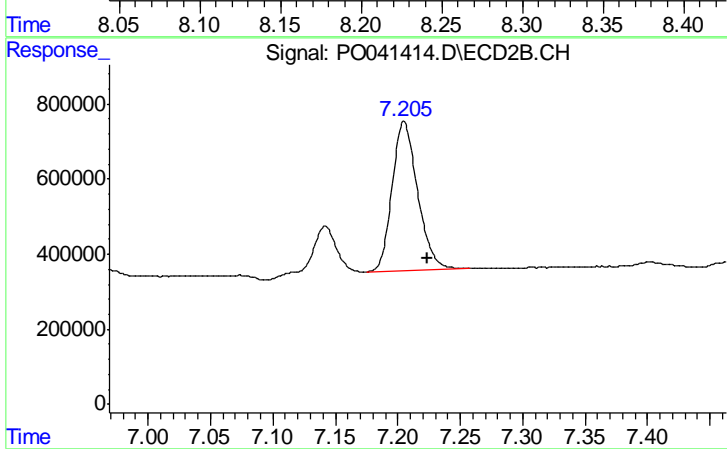
Manual Integrations
APPROVED
 ugo
 1/15/2018 12:09:15 PM



#34 AR-1260-4
 R.T.: 6.868 min
 Delta R.T.: -0.018 min
 Response: 8404870
 Conc: 121.59 ng/ml



#35 AR-1260-5
 R.T.: 8.241 min
 Delta R.T.: -0.023 min
 Response: 2306932
 Conc: 130.16 ng/ml m



#35 AR-1260-5
 R.T.: 7.205 min
 Delta R.T.: -0.018 min
 Response: 5659513
 Conc: 124.63 ng/ml