

Data Path : P:\HPCHEM1\ECD O\Data\PO011918\
 Data File : PO041525.D
 Signal(s) : Signal #1: ECD1A.CH Signal #2: ECD2B.CH
 Acq On : 17 Jan 2018 20:10
 Operator : SM/UA
 Sample : AR1262 MDL 2
 Misc : 25PPB SOIL ECD O
 ALS Vial : 11 Sample Multiplier: 1

Instrument :
 ECD_O
 ClientSampleId :

Integration File signal 1: autoint1.e
 Integration File signal 2: autoint2.e
 Quant Time: Jan 18 04:15:34 2018
 Quant Method : P:\HPCHEM1\ECD_O\methods\AR1262PO011918CLP.M
 Quant Title : GC EXTRACTABLES
 QLast Update : Thu Jan 18 01:30:25 2018
 Response via : Initial Calibration
 Integrator: ChemStation 6890 Scale Mode: Small noise peaks clipped

Volume Inj. : 1 ul
 Signal #1 Phase : ZB MR1 Signal #2 Phase: ZB MR2
 Signal #1 Info : 30Mx0.32mmx 0.5µm Signal #2 Info : 30M x 0.32mm x 0.25µm

Compound	RT#1	RT#2	Resp#1	Resp#2	ng/ml	ng/ml

System Monitoring Compounds						
1) SA Tetrachlo...	4.125	3.368	4327152	6602034	28.470	28.619
2) SA Decachlor...	9.529	8.166	9704698	15781908	51.619	54.169
Target Compounds						
36) L8 AR-1262-1	6.819	5.828	280772	490760	36.796	35.570
37) L8 AR-1262-2	7.071	6.014	416541	1164562	40.187	63.408 #
38) L8 AR-1262-3	7.424	6.368	561637	1109032	34.546	36.449
39) L8 AR-1262-4	7.645	6.862	431376	1830176	33.520	35.889
40) L8 AR-1262-5	7.944	7.688	998662	548134	37.089	35.171

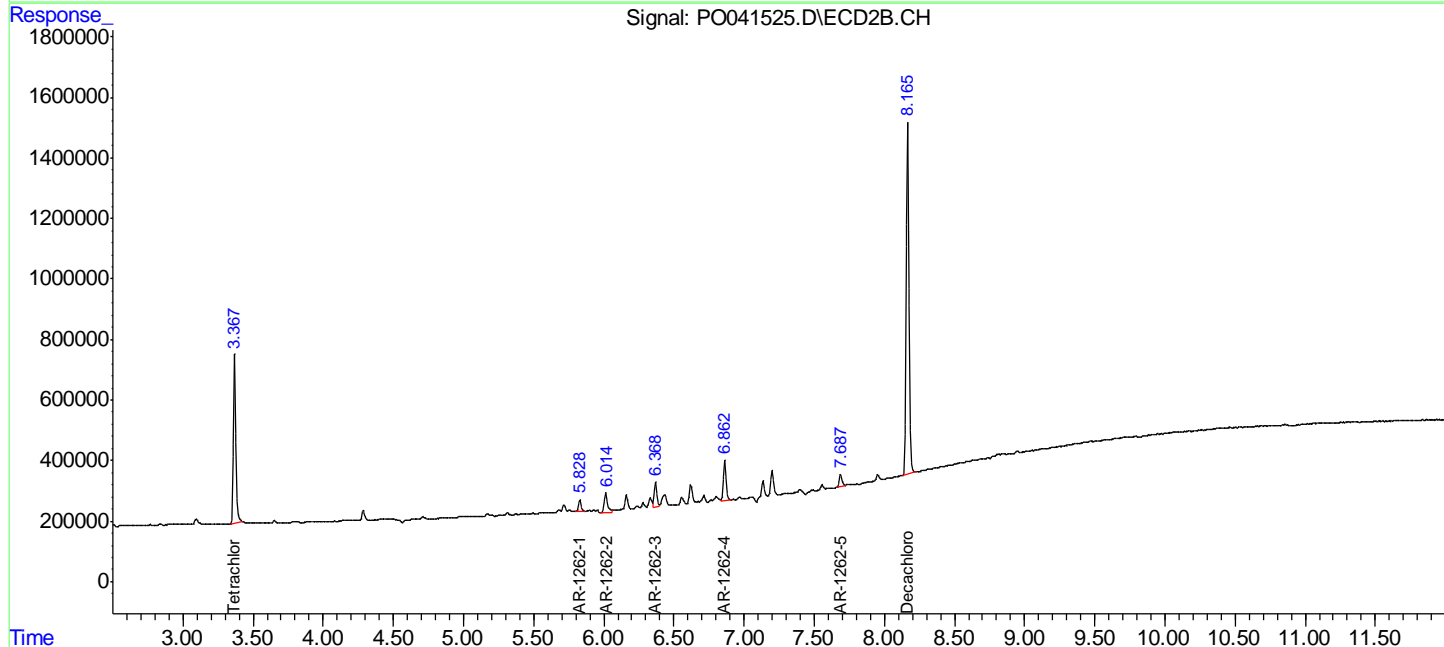
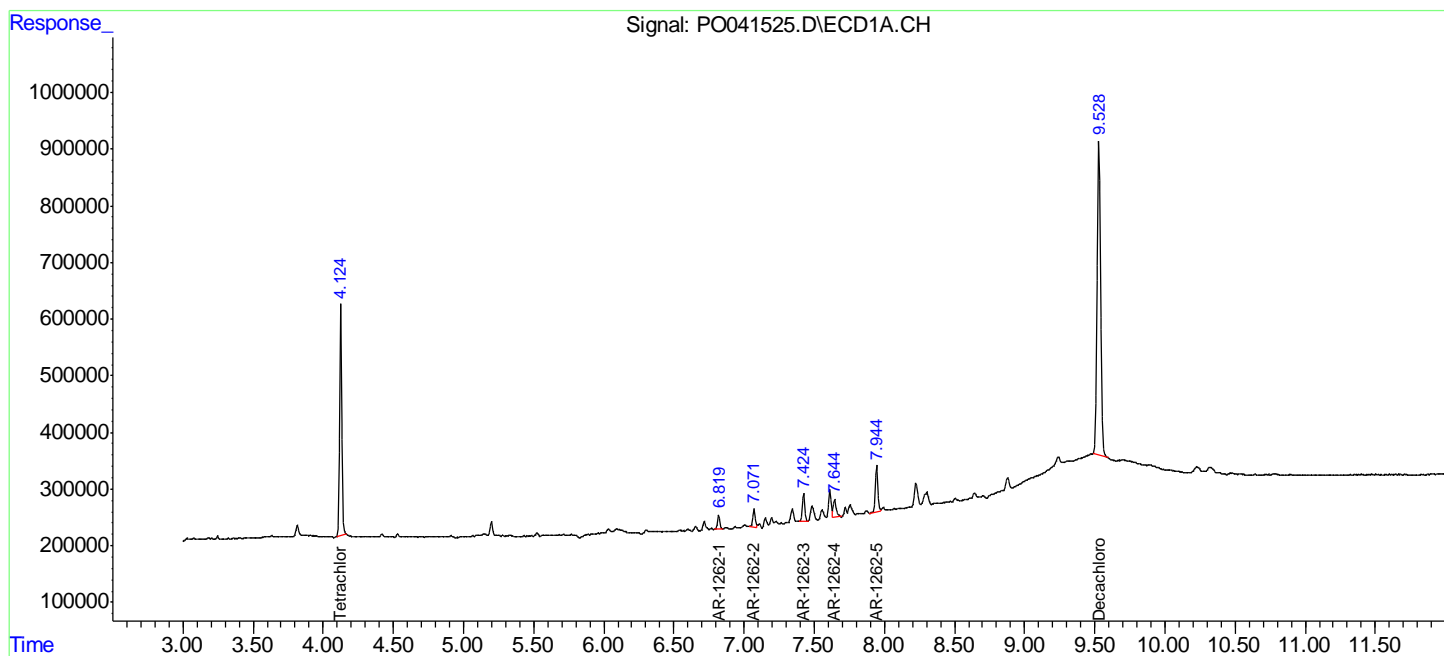
(f)=RT Delta > 1/2 Window (#)=Amounts differ by > 25% (m)=manual int.

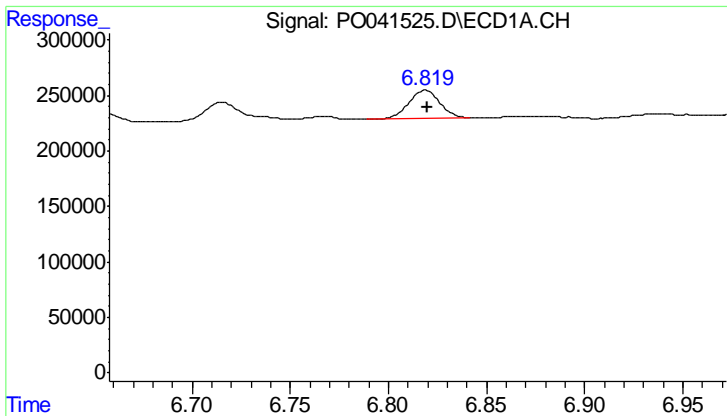
Data Path : P:\HPCHEM1\ECD O\Data\PO011918\
 Data File : PO041525.D
 Signal(s) : Signal #1: ECD1A.CH Signal #2: ECD2B.CH
 Acq On : 17 Jan 2018 20:10
 Operator : SM/UA
 Sample : AR1262 MDL 2
 Misc : 25PPB SOIL ECD O
 ALS Vial : 11 Sample Multiplier: 1

Instrument :
 ECD_O
 ClientSampled :

Integration File signal 1: autoint1.e
 Integration File signal 2: autoint2.e
 Quant Time: Jan 18 04:15:34 2018
 Quant Method : P:\HPCHEM1\ECD_O\methods\AR1262PO011918CLP.M
 Quant Title : GC EXTRACTABLES
 QLast Update : Thu Jan 18 01:30:25 2018
 Response via : Initial Calibration
 Integrator: ChemStation 6890 Scale Mode: Small noise peaks clipped

Volume Inj. : 1 ul
 Signal #1 Phase : ZB MR1 Signal #2 Phase: ZB MR2
 Signal #1 Info : 30Mx0.32mmx 0.5µm Signal #2 Info : 30M x 0.32mm x 0.25µm

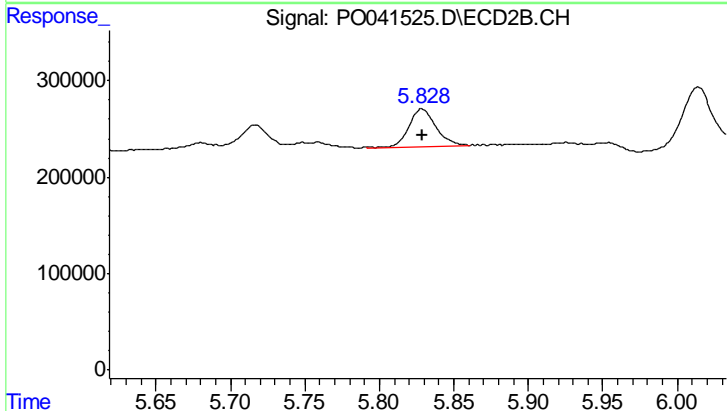




#36 AR-1262-1

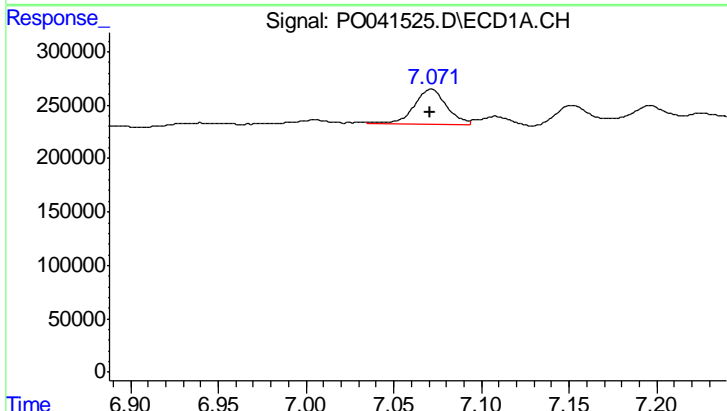
R.T.: 6.819 min
 Delta R.T.: 0.000 min
 Response: 280772
 Conc: 36.80 ng/ml

Instrument :
 ECD_O
 ClientSampled :



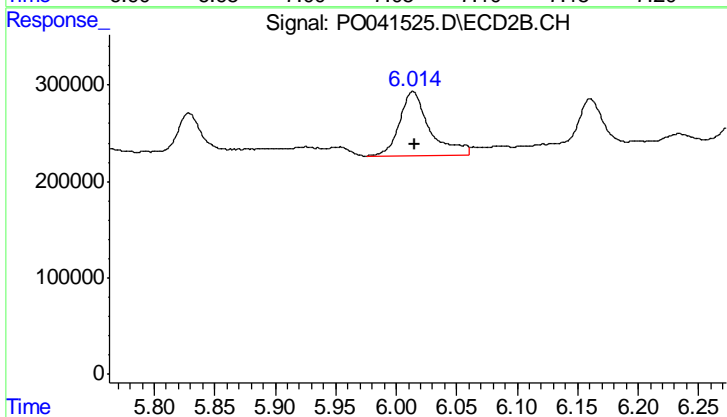
#36 AR-1262-1

R.T.: 5.828 min
 Delta R.T.: 0.000 min
 Response: 490760
 Conc: 35.57 ng/ml



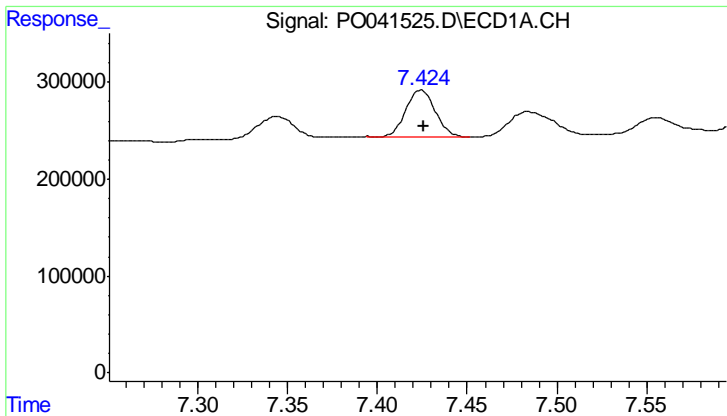
#37 AR-1262-2

R.T.: 7.071 min
 Delta R.T.: 0.000 min
 Response: 416541
 Conc: 40.19 ng/ml



#37 AR-1262-2

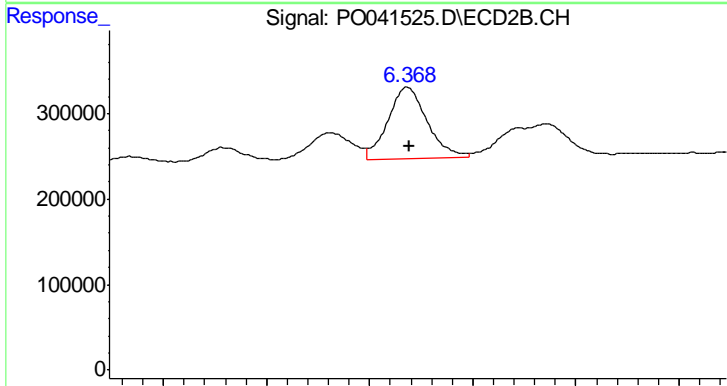
R.T.: 6.014 min
 Delta R.T.: -0.001 min
 Response: 1164562
 Conc: 63.41 ng/ml



#38 AR-1262-3

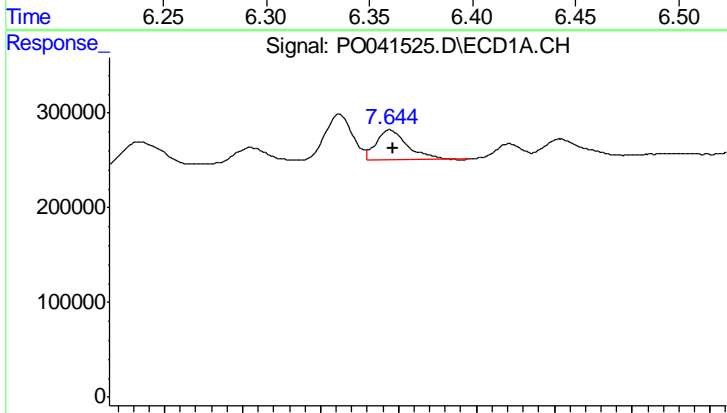
R.T.: 7.424 min
 Delta R.T.: -0.001 min
 Response: 561637
 Conc: 34.55 ng/ml

Instrument :
 ECD_O
 ClientSampled :



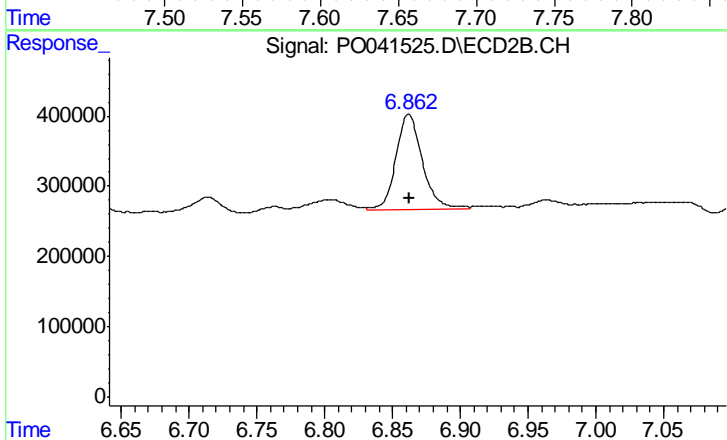
#38 AR-1262-3

R.T.: 6.368 min
 Delta R.T.: -0.001 min
 Response: 1109032
 Conc: 36.45 ng/ml



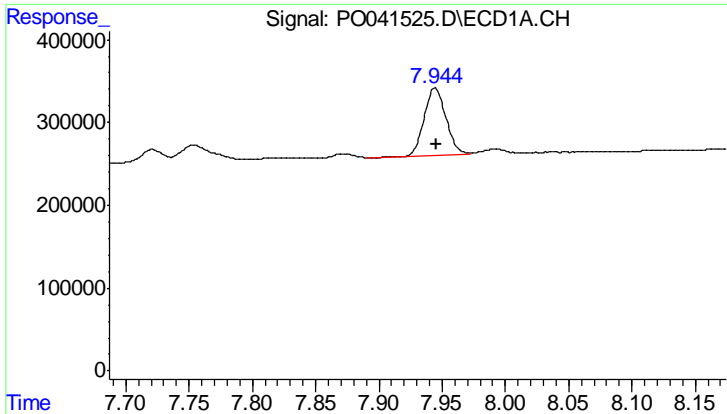
#39 AR-1262-4

R.T.: 7.645 min
 Delta R.T.: -0.002 min
 Response: 431376
 Conc: 33.52 ng/ml



#39 AR-1262-4

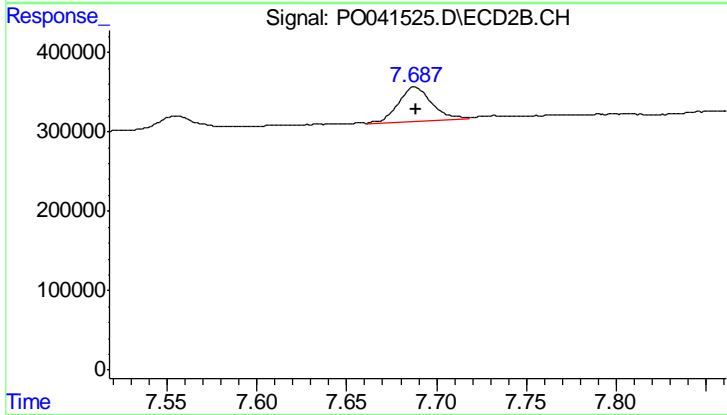
R.T.: 6.862 min
 Delta R.T.: -0.001 min
 Response: 1830176
 Conc: 35.89 ng/ml



#40 AR-1262-5

R.T.: 7.944 min
Delta R.T.: -0.001 min
Response: 998662
Conc: 37.09 ng/ml

Instrument :
ECD_O
ClientSampleId :



#40 AR-1262-5

R.T.: 7.688 min
Delta R.T.: 0.000 min
Response: 548134
Conc: 35.17 ng/ml