

Data Path : P:\HPCHEM1\ECD O\Data\PO012318\  
 Data File : PO041717.D  
 Signal(s) : Signal #1: ECD1A.CH Signal #2: ECD2B.CH  
 Acq On : 23 Jan 2018 2:14  
 Operator : SM/UA  
 Sample : J1214-01  
 Misc :  
 ALS Vial : 32 Sample Multiplier: 1

**Instrument :**  
 ECD\_O  
**ClientSampleId :**  
 WC-PH3-MGP-01

**Manual Integrations**  
**APPROVED**  
 ugo  
 1/24/2018 3:23:22 PM

Integration File signal 1: autoint1.e  
 Integration File signal 2: autoint2.e  
 Quant Time: Jan 23 06:27:29 2018  
 Quant Method : P:\HPCHEM1\ECD\_O\PO012318.M  
 Quant Title : GC EXTRACTABLES  
 QLast Update : Tue Jan 23 01:50:31 2018  
 Response via : Initial Calibration  
 Integrator: ChemStation 6890 Scale Mode: Small noise peaks clipped

Volume Inj. : 2 µl  
 Signal #1 Phase : ZB-MR1 Signal #2 Phase: ZB-MR2  
 Signal #1 Info : 30Mx0.32mmx 0.50µ Signal #2 Info : 30M x 0.32mm x 0.25µm

Compound	RT#1	RT#2	Resp#1	Resp#2	nq/ml	nq/ml
-----						
System Monitoring Compounds						
1) SA Tetrachlo...	4.121	3.365	1580045	2543011	8.186m	8.760m
2) SA Decachlor...	9.527	8.163	1078991	1531196	4.592m	4.282m

Target Compounds

-----  
 (f)=RT Delta > 1/2 Window (#)=Amounts differ by > 25% (m)=manual int.

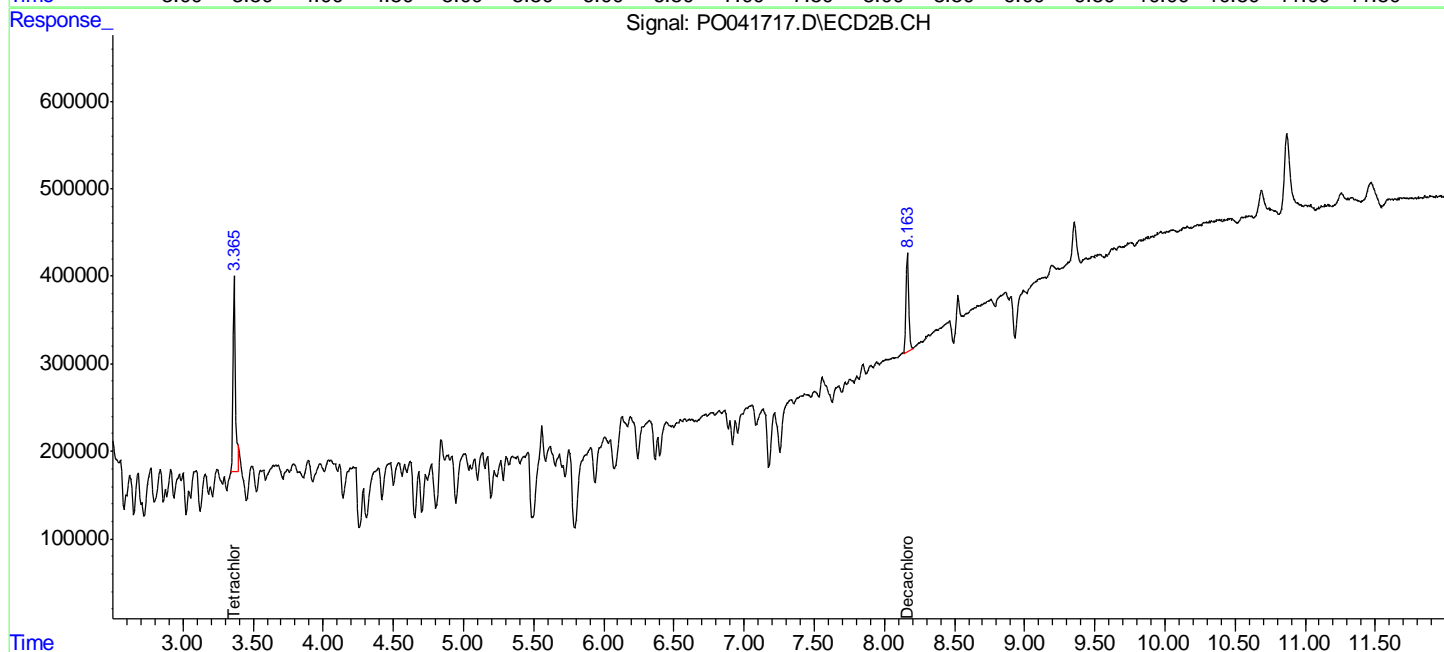
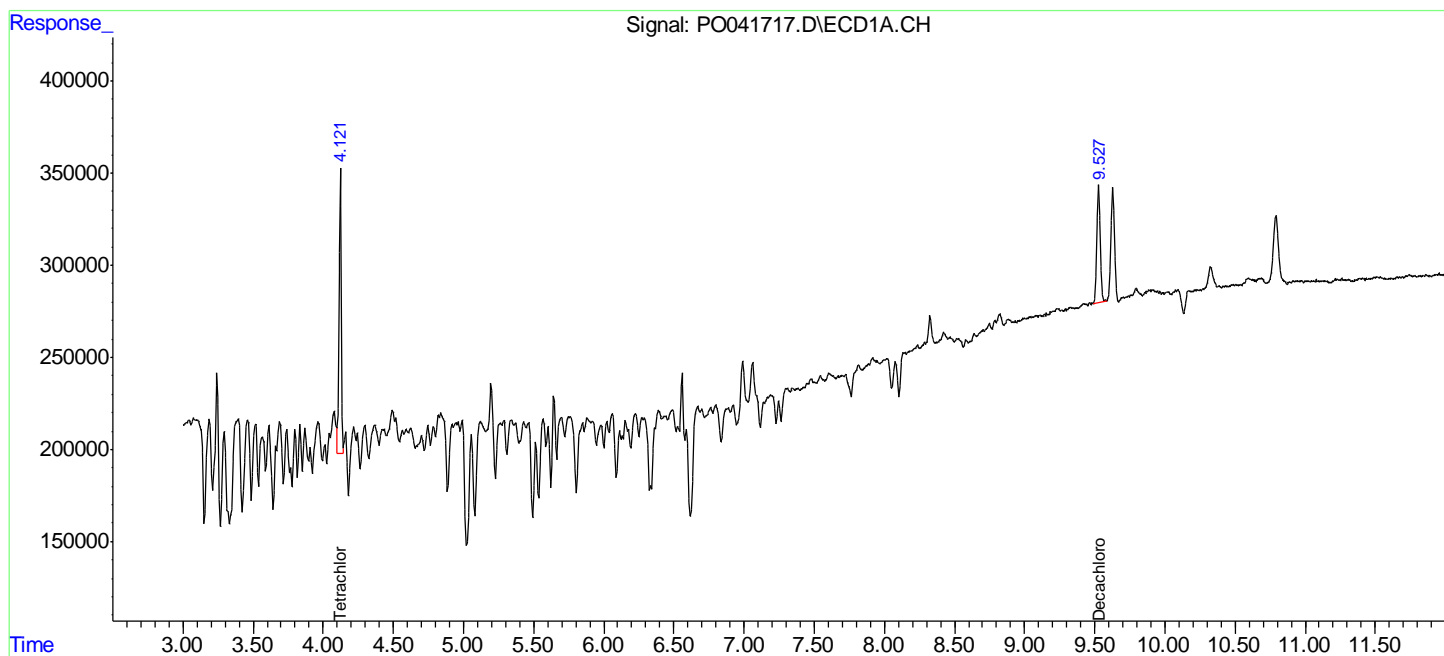
Data Path : P:\HPCHEM1\ECD O\Data\PO012318\  
 Data File : PO041717.D  
 Signal(s) : Signal #1: ECD1A.CH Signal #2: ECD2B.CH  
 Acq On : 23 Jan 2018 2:14  
 Operator : SM/UA  
 Sample : J1214-01  
 Misc :  
 ALS Vial : 32 Sample Multiplier: 1

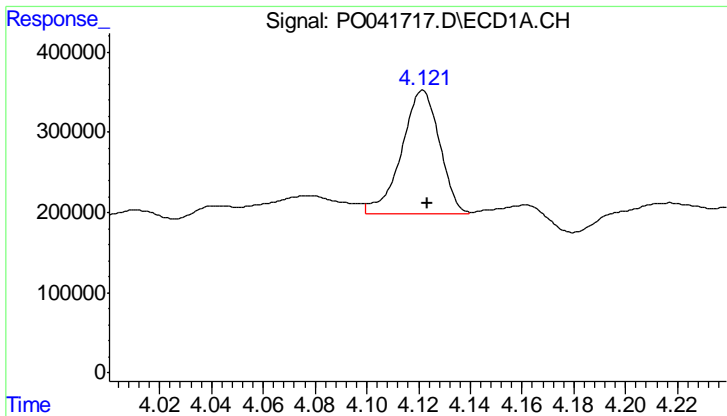
**Instrument :**  
 ECD\_O  
**Client Sampled :**  
 WC-PH3-MGP-01

**Manual Integrations**  
**APPROVED**  
 ugo  
 1/24/2018 3:23:22 PM

Integration File signal 1: autoint1.e  
 Integration File signal 2: autoint2.e  
 Quant Time: Jan 23 06:27:29 2018  
 Quant Method : P:\HPCHEM1\ECD\_O\PO012318.M  
 Quant Title : GC EXTRACTABLES  
 QLast Update : Tue Jan 23 01:50:31 2018  
 Response via : Initial Calibration  
 Integrator: ChemStation 6890 Scale Mode: Small noise peaks clipped

Volume Inj. : 2 ul  
 Signal #1 Phase : ZB-MR1 Signal #2 Phase: ZB-MR2  
 Signal #1 Info : 30Mx0.32mmx 0.50µ Signal #2 Info : 30M x 0.32mm x 0.25µm





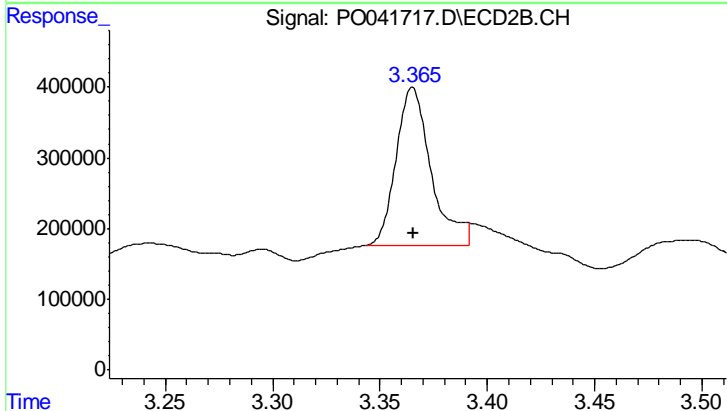
#1 Tetrachloro-m-xylene

R.T.: 4.121 min  
 Delta R.T.: -0.002 min  
 Response: 1580045  
 Conc: 8.19 ng/ml

Instrument :  
 ECD\_O  
 ClientSampleId :  
 WC-PH3-MGP-01

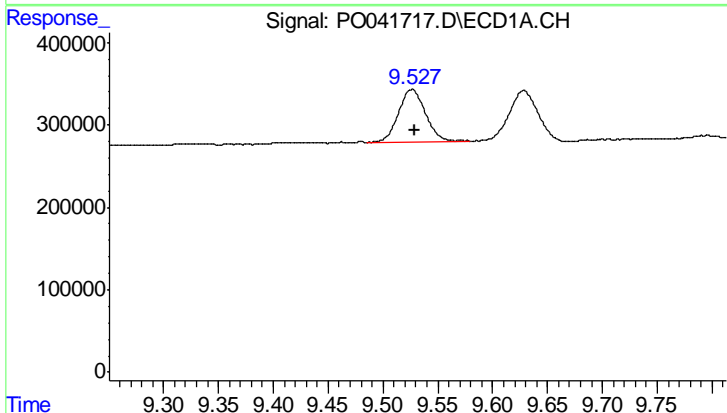
Manual Integrations  
 APPROVED

ugo  
 1/24/2018 3:23:22 PM



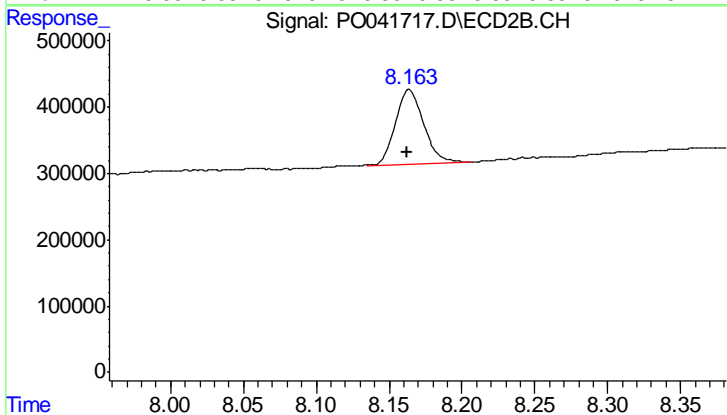
#1 Tetrachloro-m-xylene

R.T.: 3.365 min  
 Delta R.T.: -0.001 min  
 Response: 2543011  
 Conc: 8.76 ng/ml m



#2 Decachlorobiphenyl

R.T.: 9.527 min  
 Delta R.T.: -0.002 min  
 Response: 1078991  
 Conc: 4.59 ng/ml m



#2 Decachlorobiphenyl

R.T.: 8.163 min  
 Delta R.T.: 0.000 min  
 Response: 1531196  
 Conc: 4.28 ng/ml m