

Data Path : Z:\pestpcbsrv\HPCHEM1\ECD_0\Data\P0012519\
 Data File : P0053562.D
 Signal(s) : Signal #1: ECD1A.CH Signal #2: ECD2B.CH
 Acq On : 25 Jan 2019 17:30
 Operator : SM/SJ
 Sample : PB116619BL
 Misc :
 ALS Vial : 16 Sample Multiplier: 1

Instrument :
 ECD_0
 ClientSampleId :
 PB116619BL

Integration File signal 1: autoint1.e
 Integration File signal 2: autoint2.e
 Quant Time: Jan 28 05:38:38 2019
 Quant Method : Z:\pestpcbsrv\HPCHEM1\ECD_0\methods\P0012519.M
 Quant Title : GC EXTRACTABLES
 QLast Update : Mon Jan 28 05:34:06 2019
 Response via : Initial Calibration
 Integrator: ChemStation 6890 Scale Mode: Small noise peaks clipped

Volume Inj. : 2 µl
 Signal #1 Phase : ZB-MR1 Signal #2 Phase: ZB-MR2
 Signal #1 Info : 30Mx0.32mmx 0.50µ Signal #2 Info : 30M x 0.32mm x 0.25µm

Compound	RT#1	RT#2	Resp#1	Resp#2	ng/ml	ng/ml

System Monitoring Compounds						
1) SA Tetrachlo...	4.115	3.173	20470213	3526369	15.798	14.862
2) SA Decachlor...	9.522	7.790	13040492	3976608	14.899	15.899
Target Compounds						
9) L2 AR-1221-2	4.411	0.000	274208	0	31.717	N.D. #
35) L7 AR-1260-5	7.954	6.522	493762	170985	6.489	6.518
37) L8 AR-1262-2	7.954	6.522	493762	170985	4.710	5.226
38) L8 AR-1262-3	8.223	6.848	139247	166700	3.000	12.794 #
39) L8 AR-1262-4	8.295	6.848	35794	166700	0.626	6.867 #
40) L8 AR-1262-5	8.894	0.000	112757	0	2.859	N.D. #
41) L9 AR-1268-1	8.223	6.848	139247	166700	1.084	4.447 #
42) L9 AR-1268-2	8.295	6.848	35794	166700	0.290	4.710 #
44) L9 AR-1268-4	8.894	0.000	112757	0	2.601	N.D. #

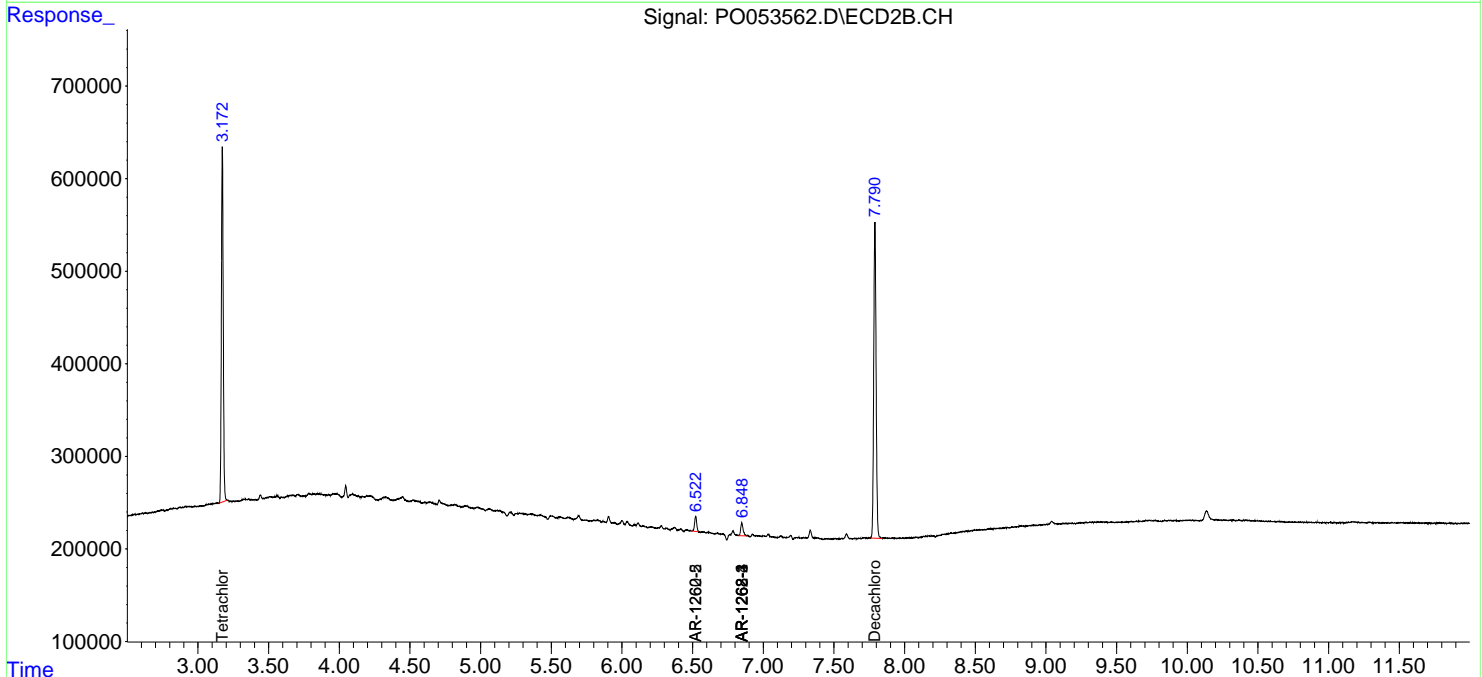
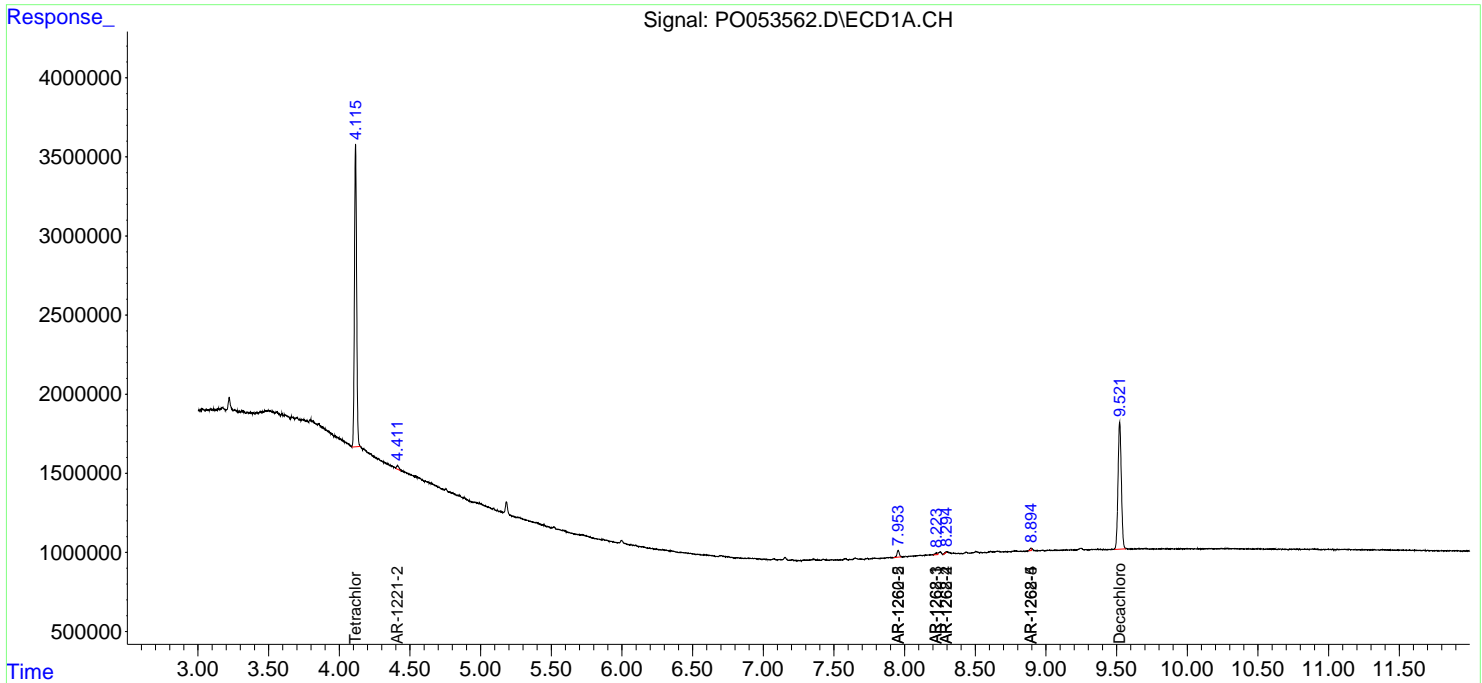
(f)=RT Delta > 1/2 Window (#)=Amounts differ by > 25% (m)=manual int.

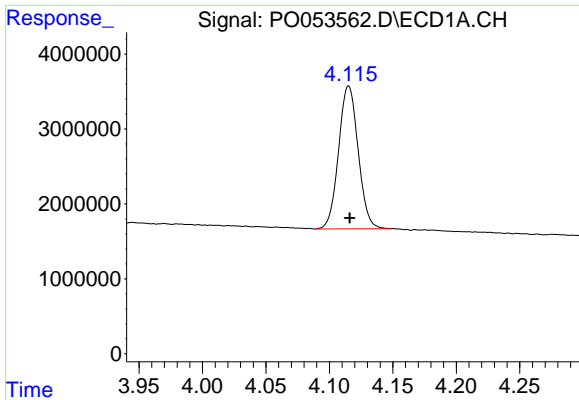
Data Path : Z:\pestpcbsrv\HPCHEM1\ECD_0\Data\P0012519\
 Data File : P0053562.D
 Signal(s) : Signal #1: ECD1A.CH Signal #2: ECD2B.CH
 Acq On : 25 Jan 2019 17:30
 Operator : SM/SJ
 Sample : PB116619BL
 Misc :
 ALS Vial : 16 Sample Multiplier: 1

Instrument :
 ECD_O
ClientSampled :
 PB116619BL

Integration File signal 1: autoint1.e
 Integration File signal 2: autoint2.e
 Quant Time: Jan 28 05:38:38 2019
 Quant Method : Z:\pestpcbsrv\HPCHEM1\ECD_0\methods\P0012519.M
 Quant Title : GC EXTRACTABLES
 QLast Update : Mon Jan 28 05:34:06 2019
 Response via : Initial Calibration
 Integrator: ChemStation 6890 Scale Mode: Small noise peaks clipped

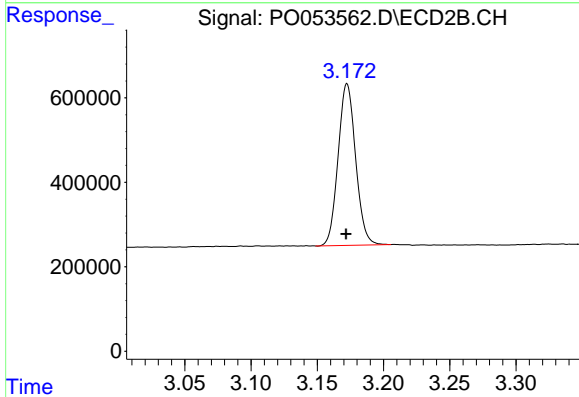
Volume Inj. : 2 µl
 Signal #1 Phase : ZB-MR1 Signal #2 Phase: ZB-MR2
 Signal #1 Info : 30Mx0.32mmx 0.50µ Signal #2 Info : 30M x 0.32mm x 0.25µm



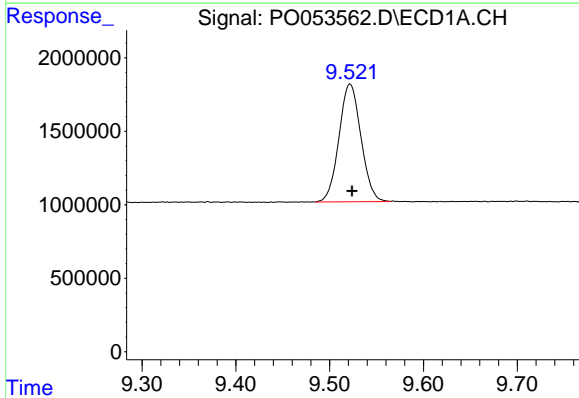


#1 Tetrachloro-m-xylene
 R.T.: 4.115 min
 Delta R.T.: 0.000 min
 Response: 20470213
 Conc: 15.80 ng/ml

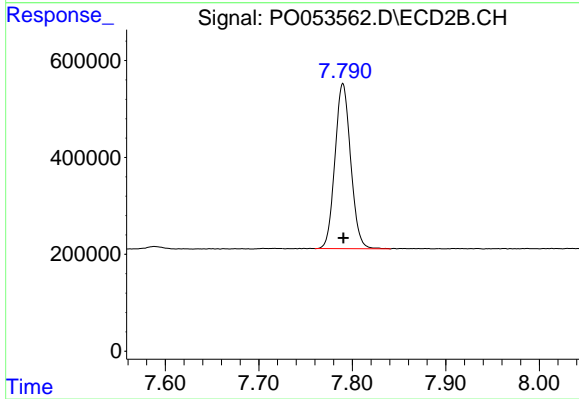
Instrument :
 ECD_O
 ClientSampleId :
 PB116619BL



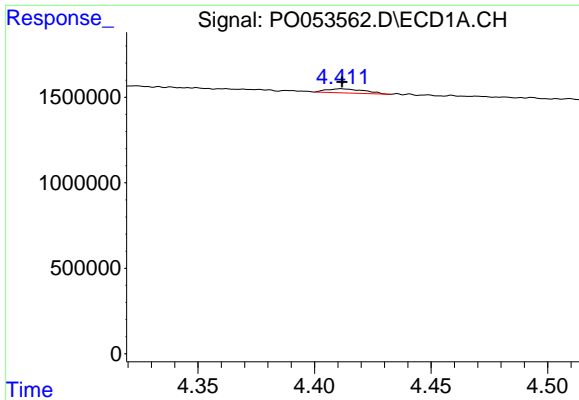
#1 Tetrachloro-m-xylene
 R.T.: 3.173 min
 Delta R.T.: 0.000 min
 Response: 3526369
 Conc: 14.86 ng/ml



#2 Decachlorobiphenyl
 R.T.: 9.522 min
 Delta R.T.: -0.003 min
 Response: 13040492
 Conc: 14.90 ng/ml



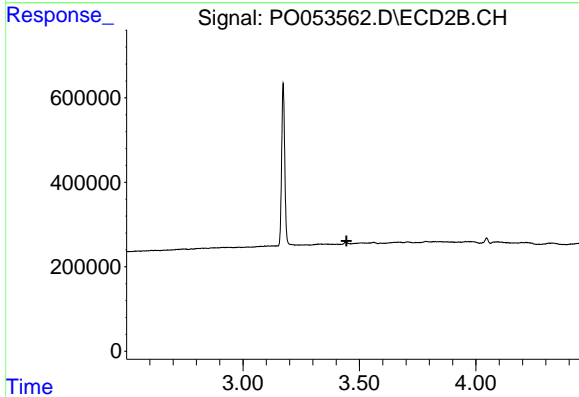
#2 Decachlorobiphenyl
 R.T.: 7.790 min
 Delta R.T.: 0.000 min
 Response: 3976608
 Conc: 15.90 ng/ml



#9 AR-1221-2

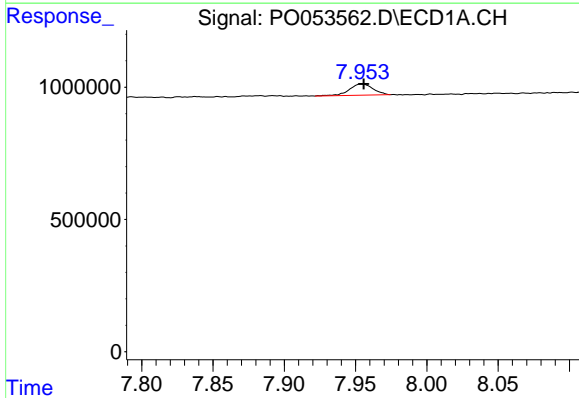
R.T.: 4.411 min
 Delta R.T.: 0.000 min
 Response: 274208
 Conc: 31.72 ng/ml

Instrument :
 ECD_O
 ClientSampled :
 PB116619BL



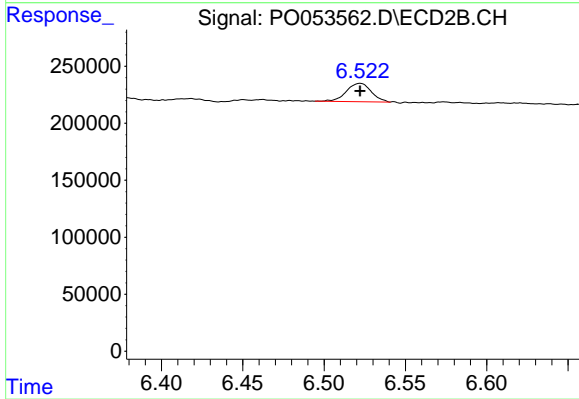
#9 AR-1221-2

R.T.: 0.000 min
 Exp R.T. : 3.444 min
 Response: 0
 Conc: N.D.



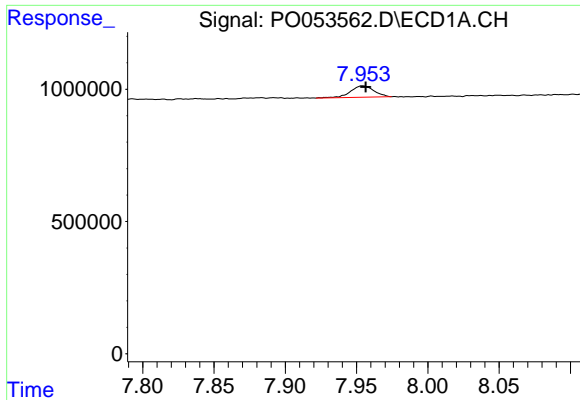
#35 AR-1260-5

R.T.: 7.954 min
 Delta R.T.: -0.001 min
 Response: 493762
 Conc: 6.49 ng/ml



#35 AR-1260-5

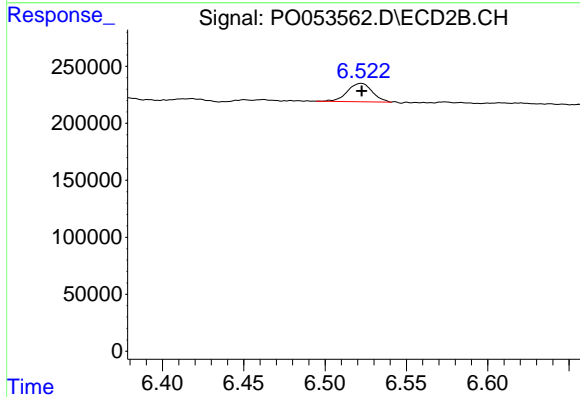
R.T.: 6.522 min
 Delta R.T.: 0.000 min
 Response: 170985
 Conc: 6.52 ng/ml



#37 AR-1262-2

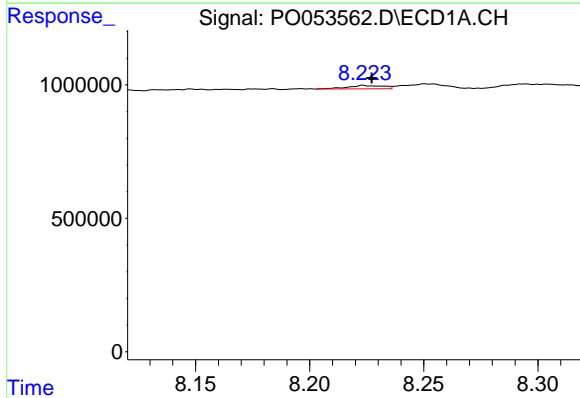
R.T.: 7.954 min
 Delta R.T.: -0.002 min
 Response: 493762
 Conc: 4.71 ng/ml

Instrument :
 ECD_O
 ClientSampleId :
 PB116619BL



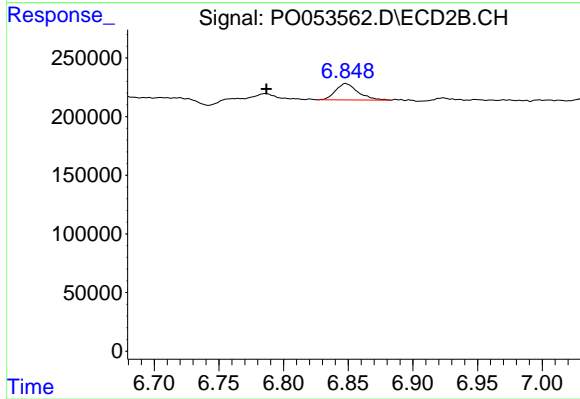
#37 AR-1262-2

R.T.: 6.522 min
 Delta R.T.: 0.000 min
 Response: 170985
 Conc: 5.23 ng/ml



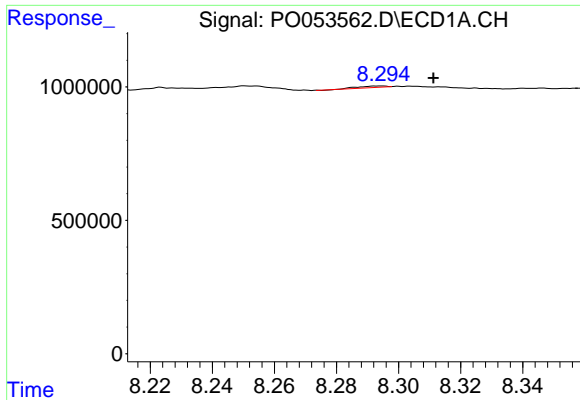
#38 AR-1262-3

R.T.: 8.223 min
 Delta R.T.: -0.004 min
 Response: 139247
 Conc: 3.00 ng/ml



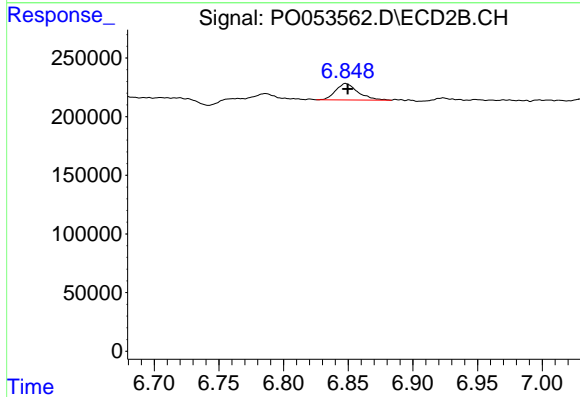
#38 AR-1262-3

R.T.: 6.848 min
 Delta R.T.: 0.061 min
 Response: 166700
 Conc: 12.79 ng/ml

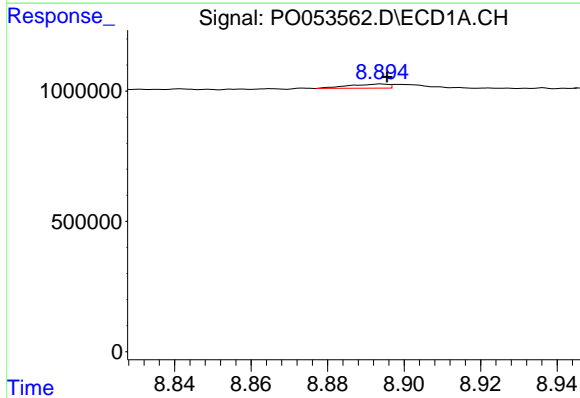


#39 AR-1262-4
 R.T.: 8.295 min
 Delta R.T.: -0.017 min
 Response: 35794
 Conc: 0.63 ng/ml

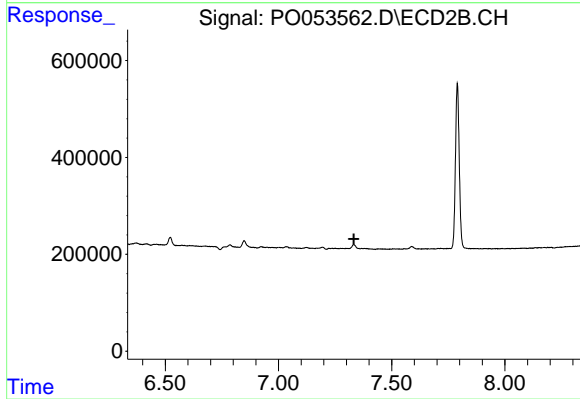
Instrument :
 ECD_O
 ClientSampleId :
 PB116619BL



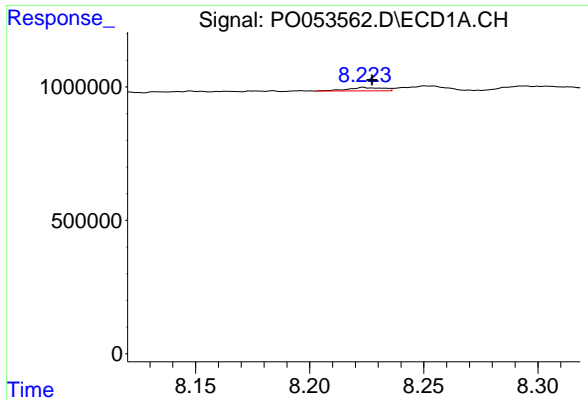
#39 AR-1262-4
 R.T.: 6.848 min
 Delta R.T.: -0.002 min
 Response: 166700
 Conc: 6.87 ng/ml



#40 AR-1262-5
 R.T.: 8.894 min
 Delta R.T.: -0.002 min
 Response: 112757
 Conc: 2.86 ng/ml

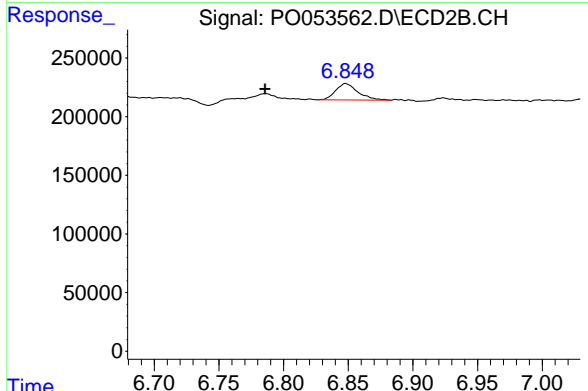


#40 AR-1262-5
 R.T.: 0.000 min
 Exp R.T. : 7.333 min
 Response: 0
 Conc: N.D.

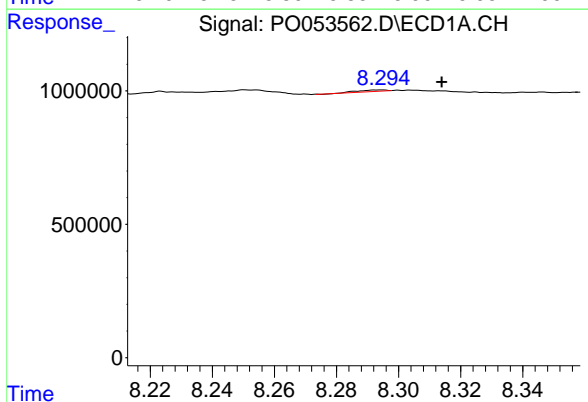


#41 AR-1268-1
 R.T.: 8.223 min
 Delta R.T.: -0.004 min
 Response: 139247
 Conc: 1.08 ng/ml

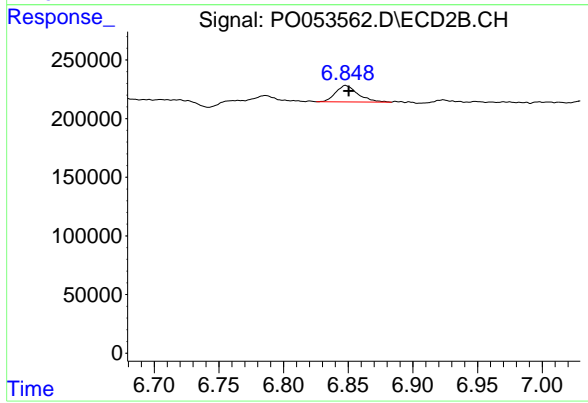
Instrument :
 ECD_O
 ClientSampleId :
 PB116619BL



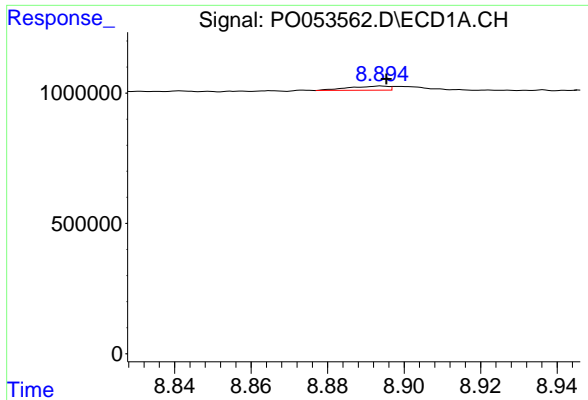
#41 AR-1268-1
 R.T.: 6.848 min
 Delta R.T.: 0.062 min
 Response: 166700
 Conc: 4.45 ng/ml



#42 AR-1268-2
 R.T.: 8.295 min
 Delta R.T.: -0.019 min
 Response: 35794
 Conc: 0.29 ng/ml



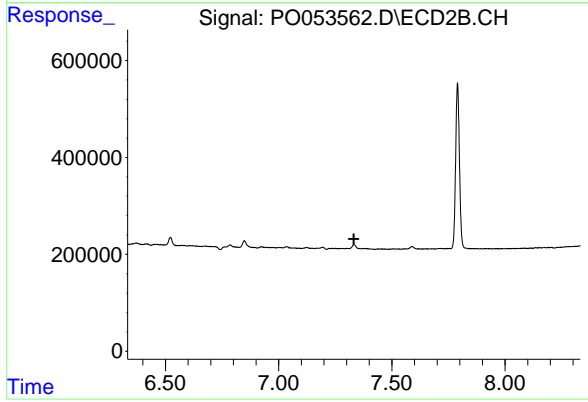
#42 AR-1268-2
 R.T.: 6.848 min
 Delta R.T.: -0.003 min
 Response: 166700
 Conc: 4.71 ng/ml



#44 AR-1268-4

R.T.: 8.894 min
Delta R.T.: -0.001 min
Response: 112757
Conc: 2.60 ng/ml

Instrument :
ECD_O
ClientSampled :
PB116619BL



#44 AR-1268-4

R.T.: 0.000 min
Exp R.T. : 7.332 min
Response: 0
Conc: N.D.