

Data Path : Z:\pestpcbsrv\HPCHEM1\ECD\_0\Data\P0012519\  
 Data File : P0053552.D  
 Signal(s) : Signal #1: ECD1A.CH Signal #2: ECD2B.CH  
 Acq On : 25 Jan 2019 14:40  
 Operator : SM/SJ  
 Sample : AR1221ICC500  
 Misc :  
 ALS Vial : 8 Sample Multiplier: 1

Instrument :  
 ECD\_0  
 ClientSampleId :  
 AR1221ICC500

Integration File signal 1: autoint1.e  
 Integration File signal 2: autoint2.e  
 Quant Time: Jan 28 05:51:36 2019  
 Quant Method : Z:\pestpcbsrv\HPCHEM1\ECD\_0\methods\P0012519.M  
 Quant Title : GC EXTRACTABLES  
 QLast Update : Mon Jan 28 05:51:29 2019  
 Response via : Initial Calibration  
 Integrator: ChemStation 6890 Scale Mode: Small noise peaks clipped

Volume Inj. : 2 µl  
 Signal #1 Phase : ZB-MR1 Signal #2 Phase: ZB-MR2  
 Signal #1 Info : 30Mx0.32mmx 0.50µ Signal #2 Info : 30M x 0.32mm x 0.25µm

Compound	RT#1	RT#2	Resp#1	Resp#2	ng/ml	ng/ml
-----						
System Monitoring Compounds						
1) SA Tetrachlo...	4.116	3.173	58434402	10213105	50.000	50.000
2) SA Decachlor...	9.525	7.791	39254631	11093341	50.000	50.000
Target Compounds						
8) L2 AR-1221-1	4.327	3.367	5967648	1296889	500.000	500.000
9) L2 AR-1221-2	4.412	3.444	4322720	981647	500.000	500.000
10) L2 AR-1221-3	4.486	3.511	13564633	3204757	500.000	500.000
-----						

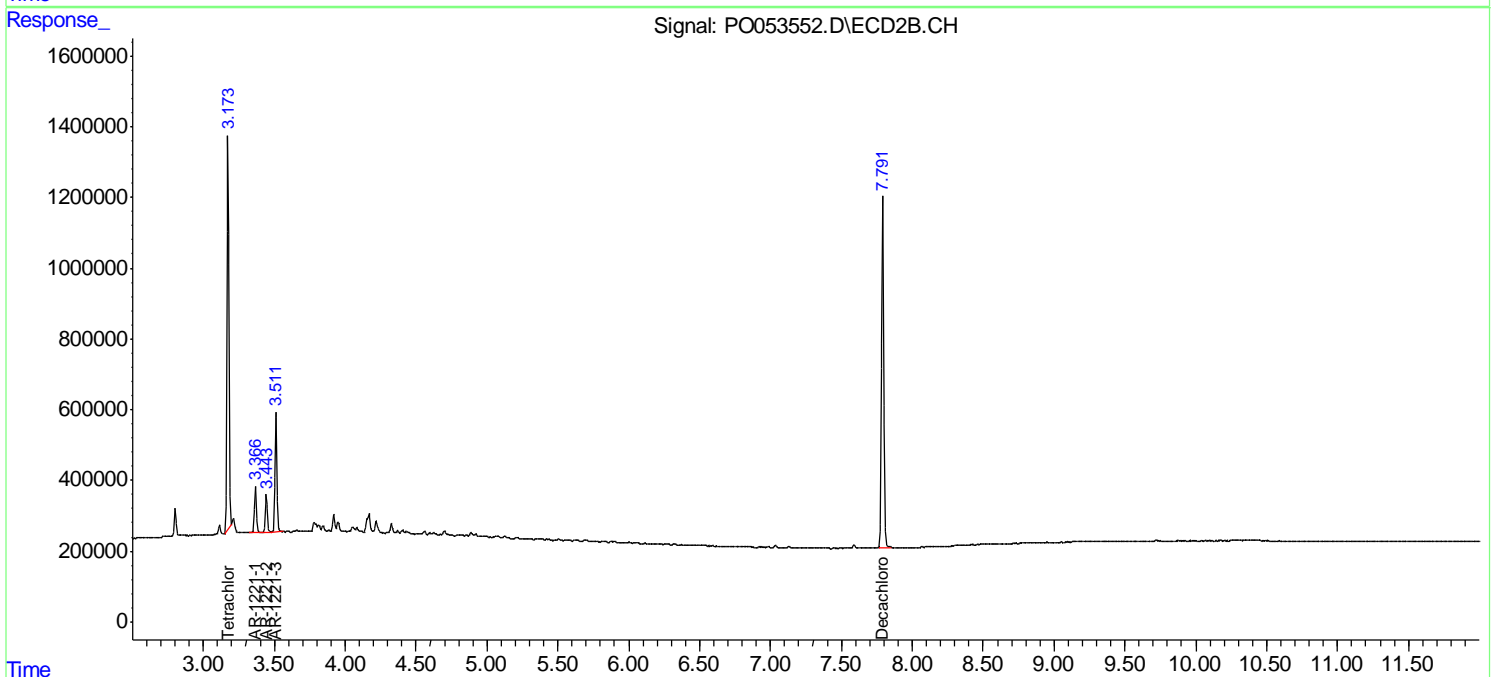
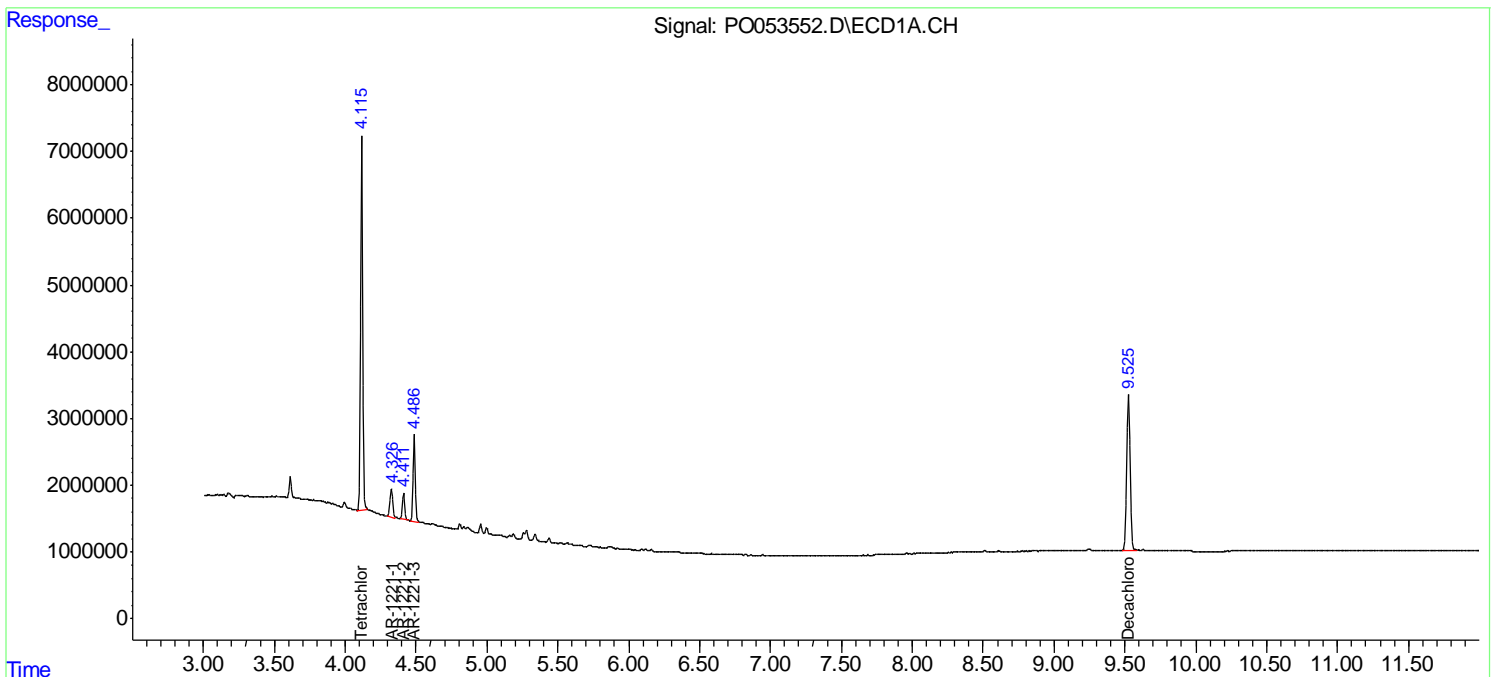
(f)=RT Delta > 1/2 Window (#)=Amounts differ by > 25% (m)=manual int.

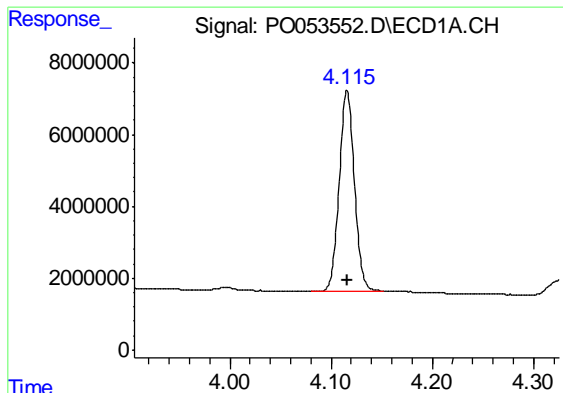
Data Path : Z:\pestpcbsrv\HPCHEM1\ECD\_O\Data\P0012519\  
 Data File : P0053552.D  
 Signal(s) : Signal #1: ECD1A.CH Signal #2: ECD2B.CH  
 Acq On : 25 Jan 2019 14:40  
 Operator : SM/SJ  
 Sample : AR1221ICC500  
 Misc :  
 ALS Vial : 8 Sample Multiplier: 1

Instrument :  
 ECD\_O  
 ClientSampled :  
 AR1221ICC500

Integration File signal 1: autoint1.e  
 Integration File signal 2: autoint2.e  
 Quant Time: Jan 28 05:51:36 2019  
 Quant Method : Z:\pestpcbsrv\HPCHEM1\ECD\_O\methods\P0012519.M  
 Quant Title : GC EXTRACTABLES  
 QLast Update : Mon Jan 28 05:51:29 2019  
 Response via : Initial Calibration  
 Integrator: ChemStation 6890 Scale Mode: Small noise peaks clipped

Volume Inj. : 2 µl  
 Signal #1 Phase : ZB-MR1 Signal #2 Phase: ZB-MR2  
 Signal #1 Info : 30Mx0.32mmx 0.50µ Signal #2 Info : 30M x 0.32mm x 0.25µm

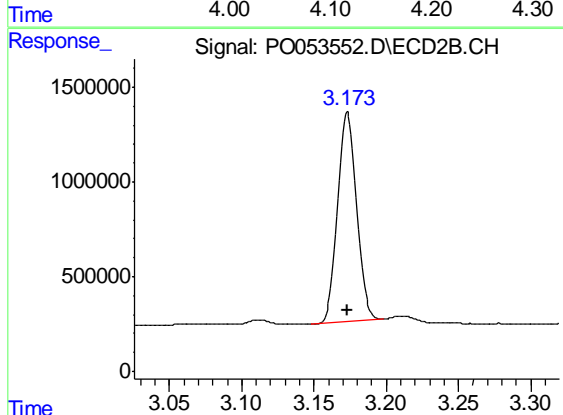




#1 Tetrachloro-m-xylene

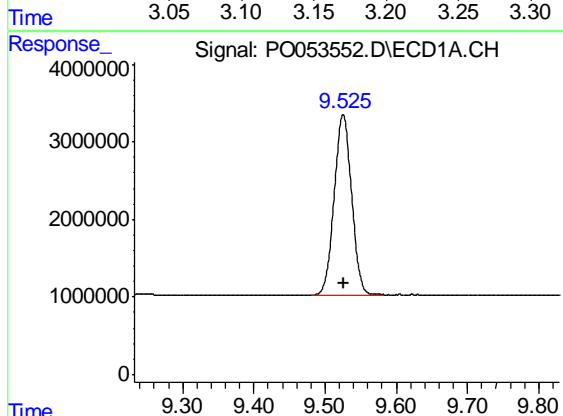
R.T.: 4.116 min  
Delta R.T.: 0.000 min  
Response: 58434402  
Conc: 50.00 ng/ml

Instrument :  
ECD\_O  
ClientSampleId :  
AR1221ICC500



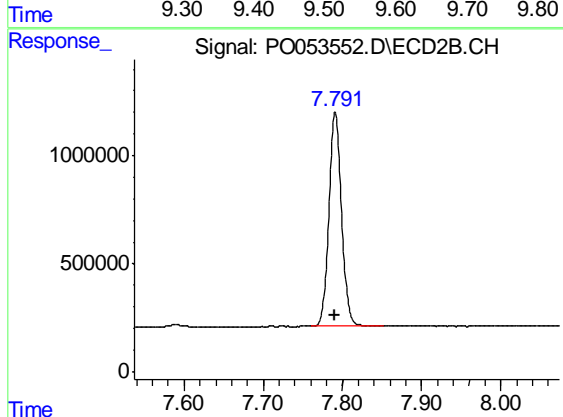
#1 Tetrachloro-m-xylene

R.T.: 3.173 min  
Delta R.T.: 0.000 min  
Response: 10213105  
Conc: 50.00 ng/ml



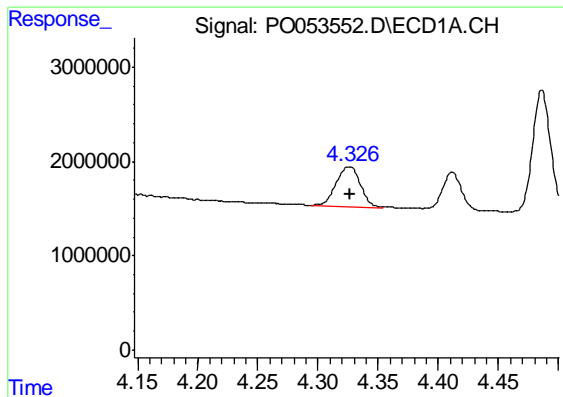
#2 Decachlorobiphenyl

R.T.: 9.525 min  
Delta R.T.: 0.000 min  
Response: 39254631  
Conc: 50.00 ng/ml



#2 Decachlorobiphenyl

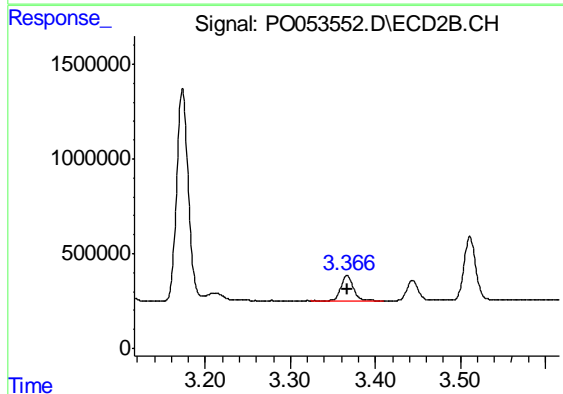
R.T.: 7.791 min  
Delta R.T.: 0.000 min  
Response: 11093341  
Conc: 50.00 ng/ml



#8 AR-1221-1

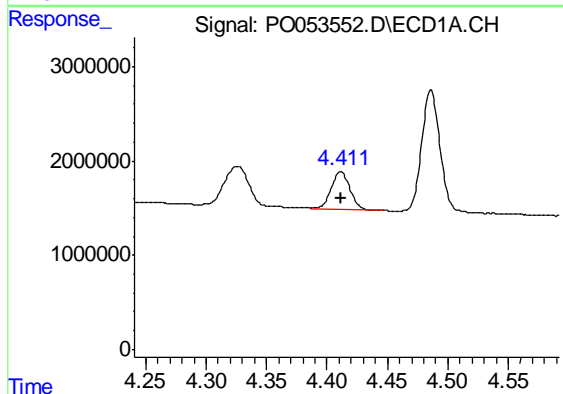
R.T.: 4.327 min  
 Delta R.T.: 0.000 min  
 Response: 5967648  
 Conc: 500.00 ng/ml

Instrument :  
 ECD\_O  
 ClientSampleId :  
 AR1221ICC500



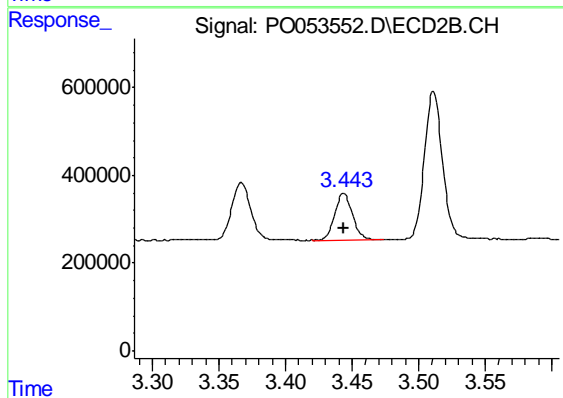
#8 AR-1221-1

R.T.: 3.367 min  
 Delta R.T.: 0.000 min  
 Response: 1296889  
 Conc: 500.00 ng/ml



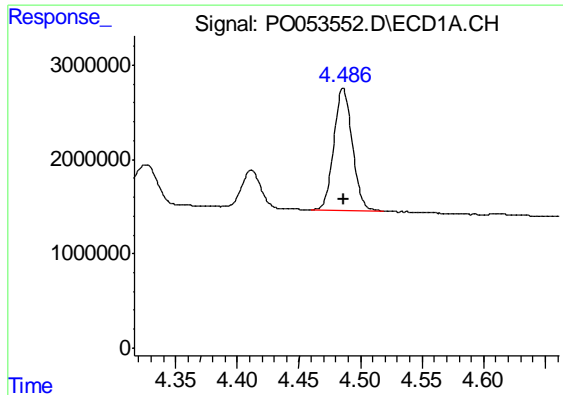
#9 AR-1221-2

R.T.: 4.412 min  
 Delta R.T.: 0.000 min  
 Response: 4322720  
 Conc: 500.00 ng/ml



#9 AR-1221-2

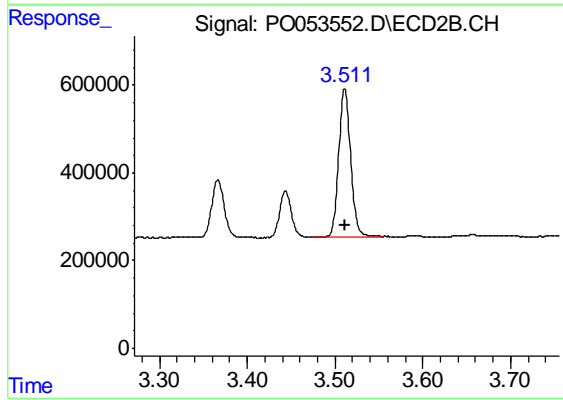
R.T.: 3.444 min  
 Delta R.T.: 0.000 min  
 Response: 981647  
 Conc: 500.00 ng/ml



#10 AR-1221-3

R.T.: 4.486 min  
Delta R.T.: 0.000 min  
Response: 13564633  
Conc: 500.00 ng/ml

Instrument :  
ECD\_O  
ClientSampleId :  
AR1221ICC500



#10 AR-1221-3

R.T.: 3.511 min  
Delta R.T.: 0.000 min  
Response: 3204757  
Conc: 500.00 ng/ml