

Data Path : Z:\pestpcbsrv\HPCHEM1\ECD_O\Data\P0012519\
 Data File : P0053567.D
 Signal(s) : Signal #1: ECD1A.CH Signal #2: ECD2B.CH
 Acq On : 25 Jan 2019 18:54
 Operator : SM/SJ
 Sample : K1229-03
 Misc :
 ALS Vial : 21 Sample Multiplier: 1

Instrument :
 ECD_O
ClientSampleId :
 012319-TIPC-F-U-B

Manual Integrations
APPROVED
 Sohil
 1/28/2019 9:59:40 AM

Integration File signal 1: autoint1.e
 Integration File signal 2: autoint2.e
 Quant Time: Jan 28 05:41:39 2019
 Quant Method : Z:\pestpcbsrv\HPCHEM1\ECD_O\methods\P0012519.M
 Quant Title : GC EXTRACTABLES
 QLast Update : Mon Jan 28 05:34:06 2019
 Response via : Initial Calibration
 Integrator: ChemStation 6890 Scale Mode: Small noise peaks clipped

Volume Inj. : 2 µl
 Signal #1 Phase : ZB-MR1 Signal #2 Phase: ZB-MR2
 Signal #1 Info : 30Mx0.32mmx 0.50µ Signal #2 Info : 30M x 0.32mm x 0.25µm

Compound	RT#1	RT#2	Resp#1	Resp#2	ng/ml	ng/ml

System Monitoring Compounds						
1) SA Tetrachlo...	4.115	3.173	37467501	5368582	28.916m	22.627
2) SA Decachlor...	9.523	7.789	16235780	4549914	18.549	18.191

Target Compounds

(f)=RT Delta > 1/2 Window (#)=Amounts differ by > 25% (m)=manual int.

Data Path : Z:\pestpcbsrv\HPCHEM1\ECD_O\Data\P0012519\
 Data File : P0053567.D
 Signal(s) : Signal #1: ECD1A.CH Signal #2: ECD2B.CH
 Acq On : 25 Jan 2019 18:54
 Operator : SM/SJ
 Sample : K1229-03
 Misc :
 ALS Vial : 21 Sample Multiplier: 1

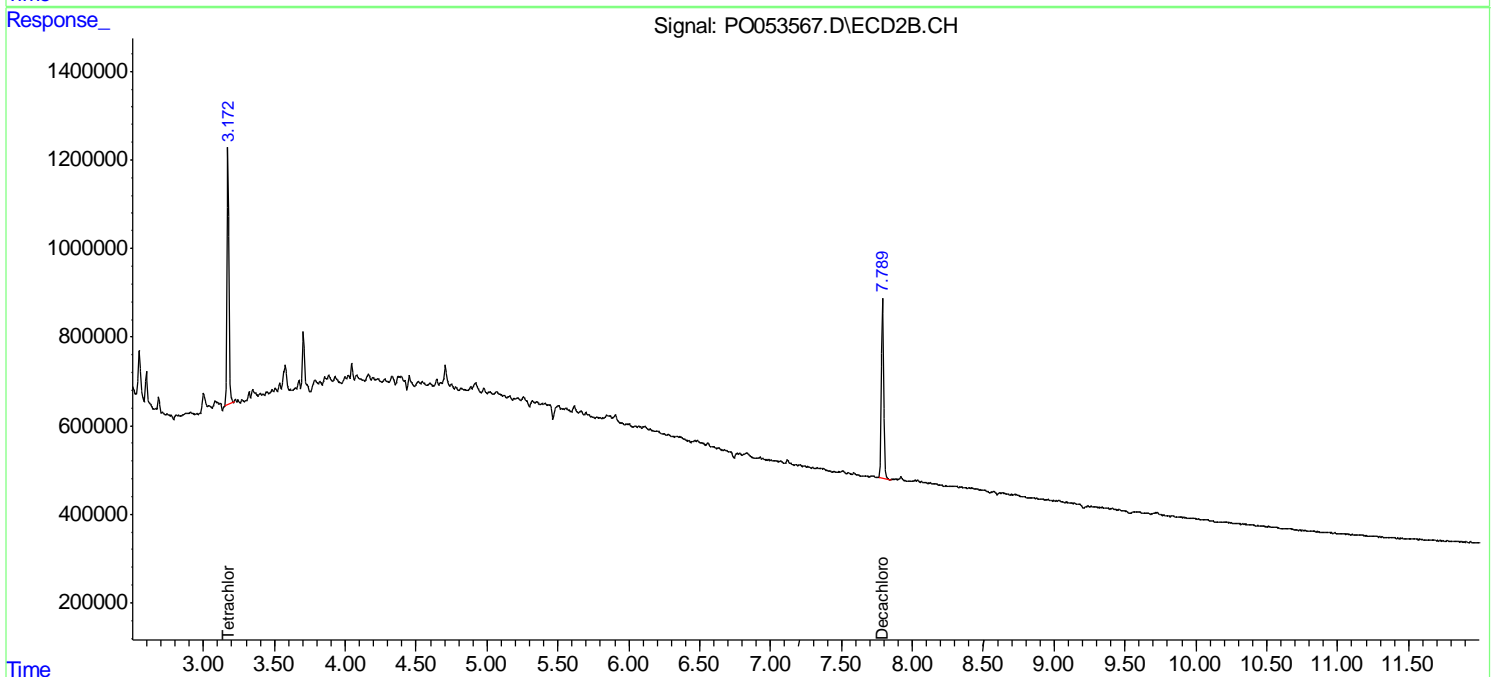
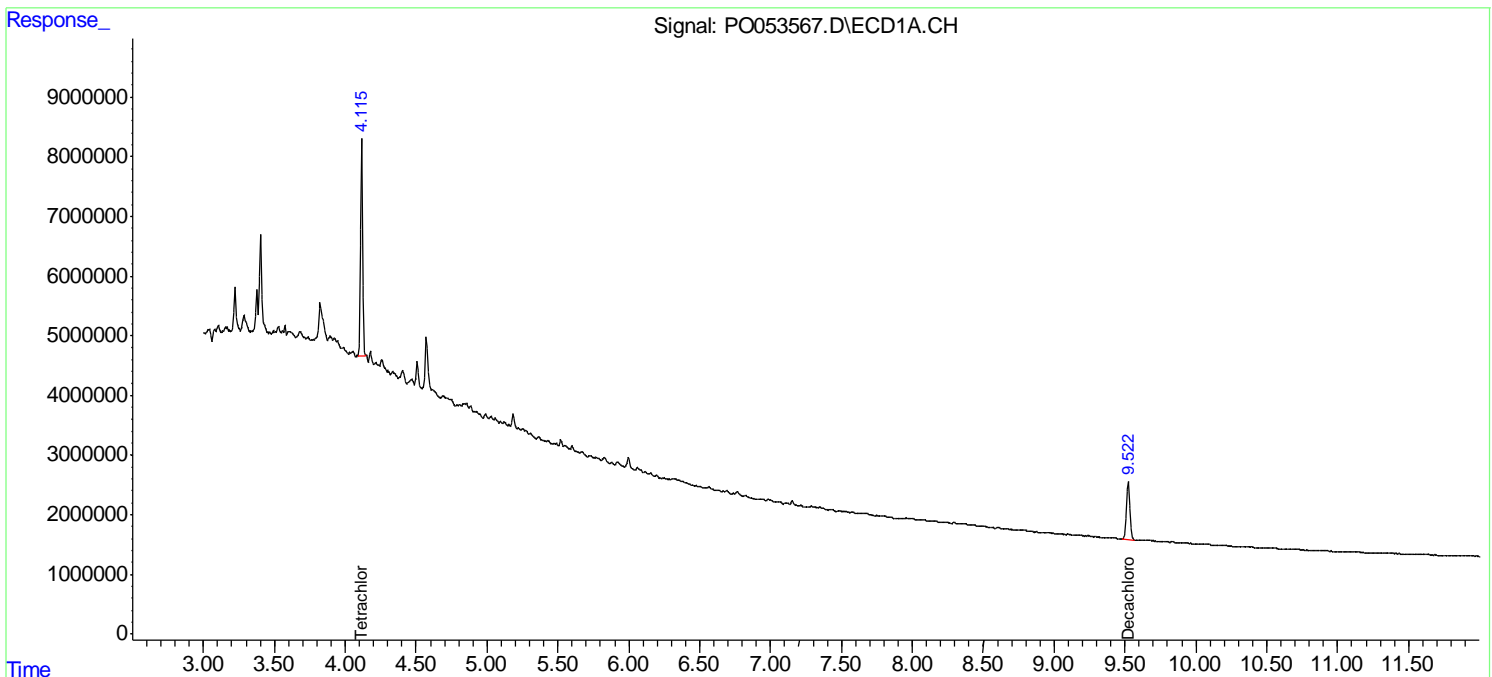
Instrument :
 ECD_O
 ClientSampleId :
 012319-TIPC-F-U-B

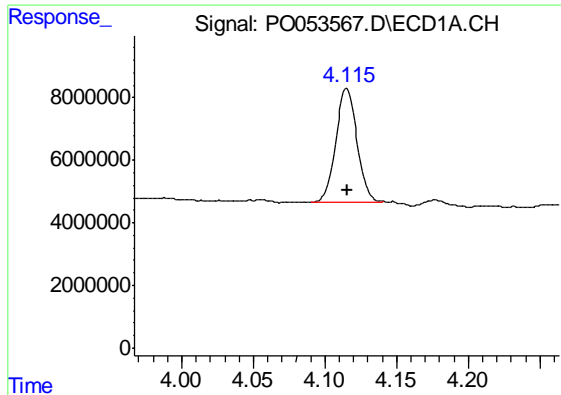
Manual Integrations
 APPROVED

Sohil
 1/28/2019 9:59:40 AM

Integration File signal 1: autoint1.e
 Integration File signal 2: autoint2.e
 Quant Time: Jan 28 05:41:39 2019
 Quant Method : Z:\pestpcbsrv\HPCHEM1\ECD_O\methods\P0012519.M
 Quant Title : GC EXTRACTABLES
 QLast Update : Mon Jan 28 05:34:06 2019
 Response via : Initial Calibration
 Integrator: ChemStation 6890 Scale Mode: Small noise peaks clipped

Volume Inj. : 2 µl
 Signal #1 Phase : ZB-MR1 Signal #2 Phase: ZB-MR2
 Signal #1 Info : 30Mx0.32mmx 0.50µ Signal #2 Info : 30M x 0.32mm x 0.25µm





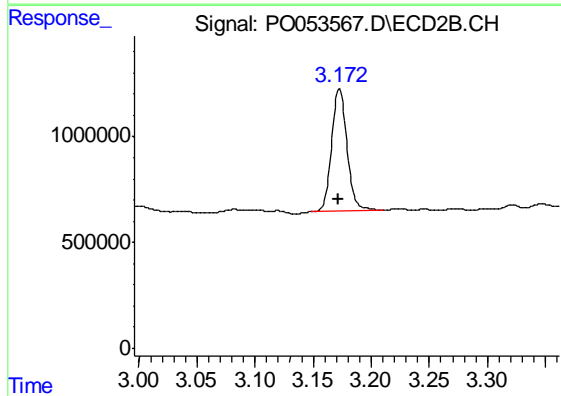
#1 Tetrachloro-m-xylene

R.T.: 4.115 min
 Delta R.T.: -0.001 min
 Response: 37467501
 Conc: 28.92 ng/ml m

Instrument :
 ECD_O
 ClientSampleId :
 012319-TIPC-F-U-B

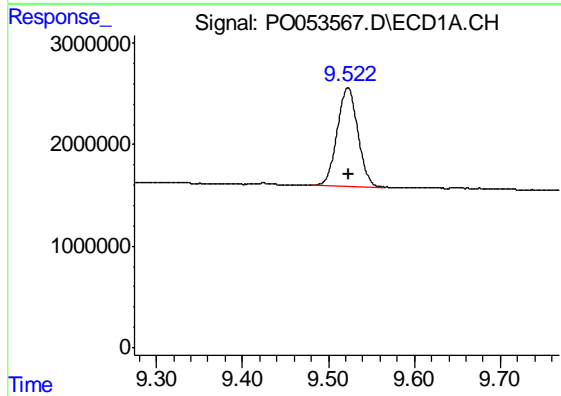
Manual Integrations
 APPROVED

Sohil
 1/28/2019 9:59:40 AM



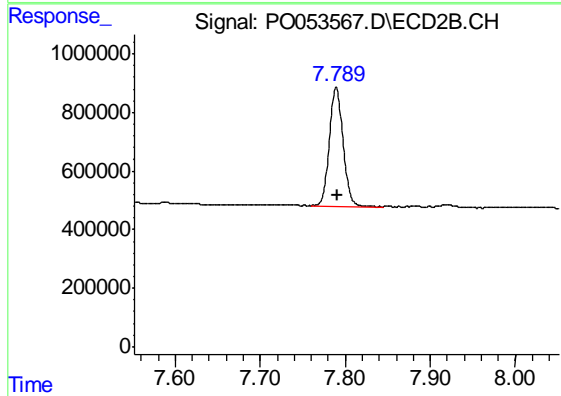
#1 Tetrachloro-m-xylene

R.T.: 3.173 min
 Delta R.T.: 0.000 min
 Response: 5368582
 Conc: 22.63 ng/ml



#2 Decachlorobiphenyl

R.T.: 9.523 min
 Delta R.T.: -0.001 min
 Response: 16235780
 Conc: 18.55 ng/ml



#2 Decachlorobiphenyl

R.T.: 7.789 min
 Delta R.T.: 0.000 min
 Response: 4549914
 Conc: 18.19 ng/ml