

Data Path : P:\HPCHEM1\ECD_O\Data\PO020218\
 Data File : PO041967.D
 Signal(s) : Signal #1: ECD1A.CH Signal #2: ECD2B.CH
 Acq On : 31 Jan 2018 7:51
 Operator : SM/UA
 Sample : I.BLK
 Misc :
 ALS Vial : 2 Sample Multiplier: 1

Instrument :
 ECD_O
 ClientSampleId :
 I.BLK

Integration File signal 1: autoint1.e
 Integration File signal 2: autoint2.e
 Quant Time: Jan 31 14:04:42 2018
 Quant Method : P:\HPCHEM1\ECD_O\PO012318.M
 Quant Title : GC EXTRACTABLES
 QLast Update : Tue Jan 23 01:50:31 2018
 Response via : Initial Calibration
 Integrator: ChemStation 6890 Scale Mode: Small noise peaks clipped

Volume Inj. : 2 µl
 Signal #1 Phase : ZB-MR1 Signal #2 Phase: ZB-MR2
 Signal #1 Info : 30Mx0.32mmx 0.50µ Signal #2 Info : 30M x 0.32mm x 0.25µm

Compound	RT#1	RT#2	Resp#1	Resp#2	ng/ml	ng/ml

System Monitoring Compounds						
1) SA Tetrachlo...	4.121	3.363	5501012	8342420	28.501	28.738
2) SA Decachlor...	9.518	8.158	3922428	5168269	16.694	14.452

Target Compounds

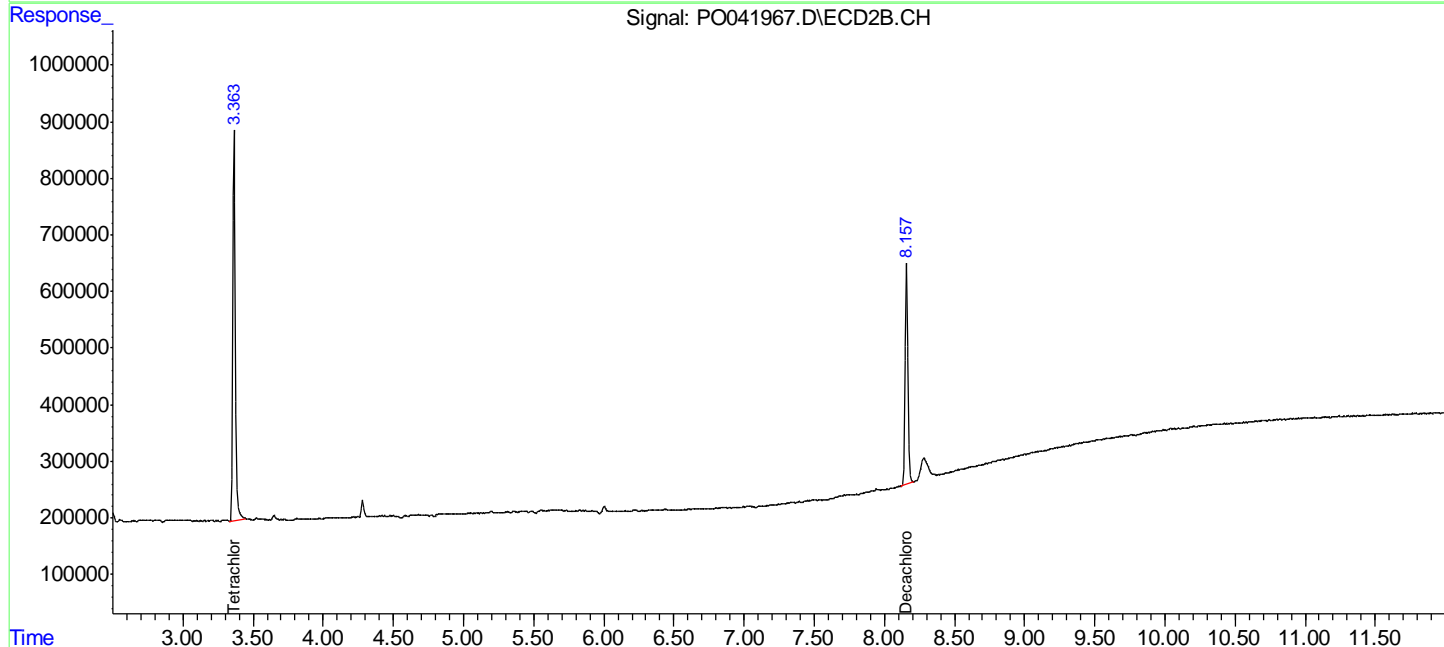
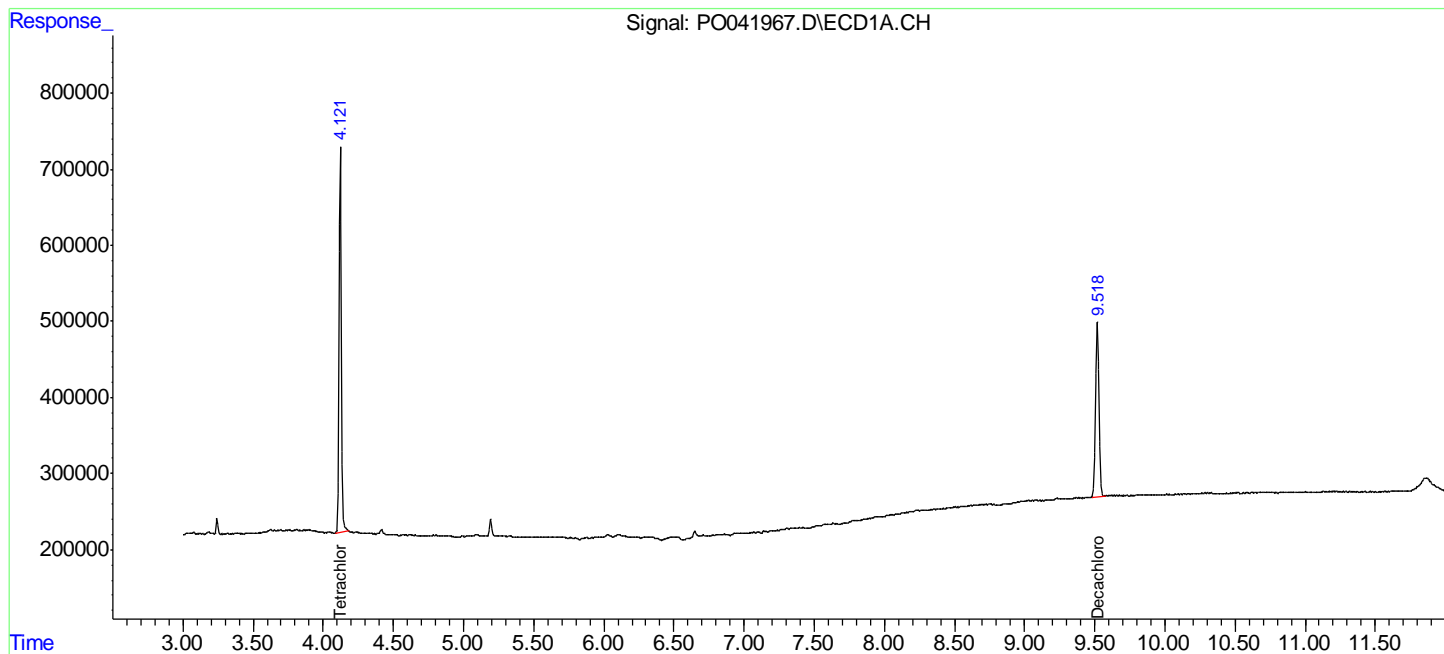
(f)=RT Delta > 1/2 Window (#)=Amounts differ by > 25% (m)=manual int.

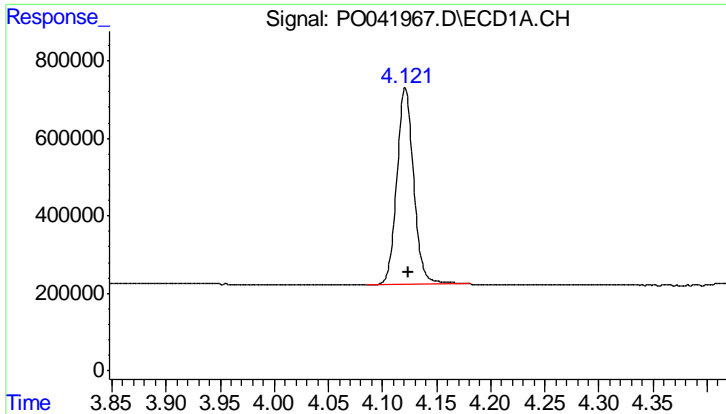
Data Path : P:\HPCHEM1\ECD_O\Data\PO020218\
 Data File : PO041967.D
 Signal(s) : Signal #1: ECD1A.CH Signal #2: ECD2B.CH
 Acq On : 31 Jan 2018 7:51
 Operator : SM/UA
 Sample : I.BLK
 Misc :
 ALS Vial : 2 Sample Multiplier: 1

Instrument :
 ECD_O
 ClientSampled :
 I.BLK

Integration File signal 1: autoint1.e
 Integration File signal 2: autoint2.e
 Quant Time: Jan 31 14:04:42 2018
 Quant Method : P:\HPCHEM1\ECD_O\PO012318.M
 Quant Title : GC EXTRACTABLES
 QLast Update : Tue Jan 23 01:50:31 2018
 Response via : Initial Calibration
 Integrator: ChemStation 6890 Scale Mode: Small noise peaks clipped

Volume Inj. : 2 µl
 Signal #1 Phase : ZB-MR1 Signal #2 Phase: ZB-MR2
 Signal #1 Info : 30Mx0.32mmx 0.50µ Signal #2 Info : 30M x 0.32mm x 0.25µm

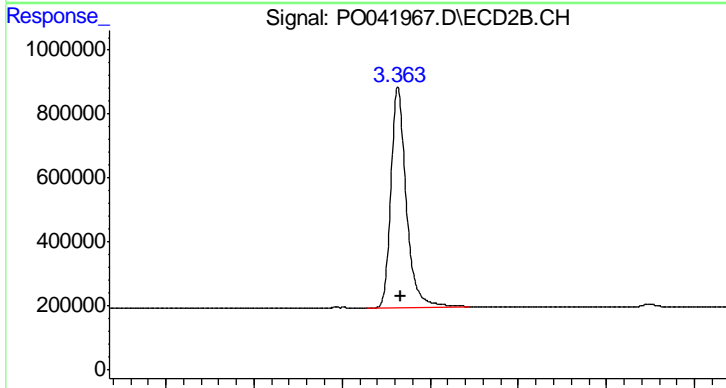




#1 Tetrachloro-m-xylene

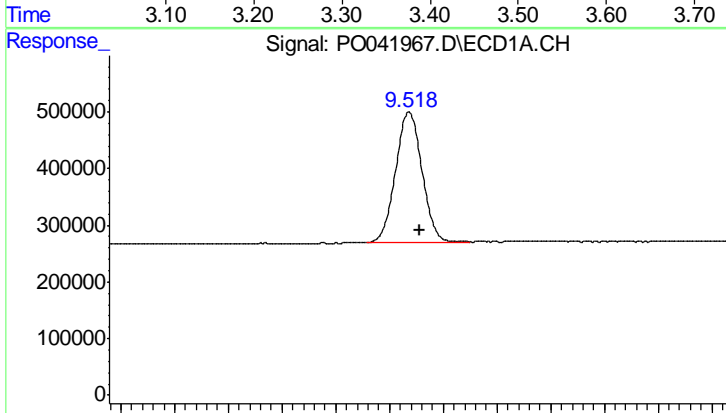
R.T.: 4.121 min
Delta R.T.: -0.002 min
Response: 5501012
Conc: 28.50 ng/ml

Instrument :
ECD_O
ClientSampleId :
I.BLK



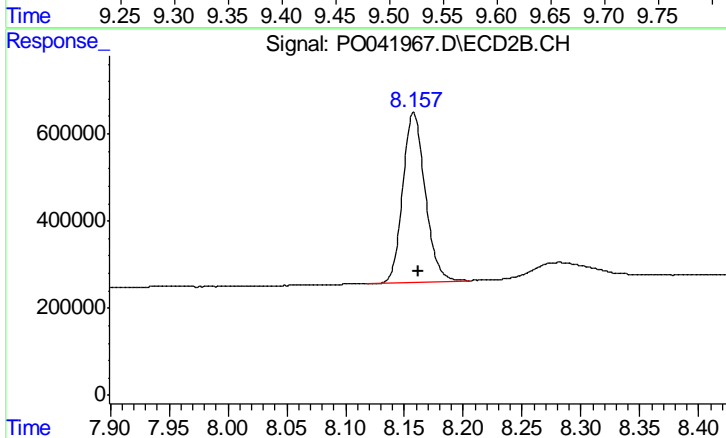
#1 Tetrachloro-m-xylene

R.T.: 3.363 min
Delta R.T.: -0.003 min
Response: 8342420
Conc: 28.74 ng/ml



#2 Decachlorobiphenyl

R.T.: 9.518 min
Delta R.T.: -0.011 min
Response: 3922428
Conc: 16.69 ng/ml



#2 Decachlorobiphenyl

R.T.: 8.158 min
Delta R.T.: -0.005 min
Response: 5168269
Conc: 14.45 ng/ml