

Data Path : P:\HPCHEM1\ECD_O\Data\PO020218\
 Data File : PO041975.D
 Signal(s) : Signal #1: ECD1A.CH Signal #2: ECD2B.CH
 Acq On : 31 Jan 2018 12:17
 Operator : SM/UA
 Sample : J1370-07
 Misc :
 ALS Vial : 10 Sample Multiplier: 1

Instrument :
 ECD_O
 ClientSampleId :
 15K-7B

Integration File signal 1: autoint1.e
 Integration File signal 2: autoint2.e
 Quant Time: Jan 31 14:08:24 2018
 Quant Method : P:\HPCHEM1\ECD_O\PO012318.M
 Quant Title : GC EXTRACTABLES
 QLast Update : Tue Jan 23 01:50:31 2018
 Response via : Initial Calibration
 Integrator: ChemStation 6890 Scale Mode: Small noise peaks clipped

Volume Inj. : 2 µl
 Signal #1 Phase : ZB-MR1 Signal #2 Phase: ZB-MR2
 Signal #1 Info : 30Mx0.32mmx 0.50µ Signal #2 Info : 30M x 0.32mm x 0.25µm

Compound	RT#1	RT#2	Resp#1	Resp#2	ng/ml	ng/ml

System Monitoring Compounds						
1) SA Tetrachlo...	4.118	3.363	2171155	3252420	11.249	11.204
2) SA Decachlor...	9.515	8.157	2630932	3011274	11.198	8.420
Target Compounds						
4) L1 AR-1016-2	5.400	0.000	433254	0	60.405	N.D. #
5) L1 AR-1016-3	5.400	0.000	433254	0	72.703	N.D. #
6) L1 AR-1016-4	0.000	4.770	0	1926398	N.D.	206.729 #
7) L1 AR-1016-5	0.000	4.907	0	2046894	N.D.	206.453 #
10) L2 AR-1221-3	0.000	3.775	0	516140	N.D.	82.532 #
11) L3 AR-1232-1	0.000	3.775	0	516140	N.D.	104.816 #
12) L3 AR-1232-2	5.189	0.000	1380814	0	524.684	N.D. #
13) L3 AR-1232-3	0.000	4.492	0	457057	N.D.	110.838 #
14) L3 AR-1232-4	5.400	0.000	433254	0	157.344	N.D. #
15) L3 AR-1232-5	5.400	0.000	433254	0	206.333	N.D. #
16) L4 AR-1242-1	0.000	4.037	0	492297	N.D.	193.989 #
18) L4 AR-1242-3	5.400	0.000	433254	0	117.859	N.D. #
20) L4 AR-1242-5	0.000	4.770	0	1926398	N.D.	333.166 #
21) L5 AR-1248-1	0.000	4.770	0	1926398	N.D.	176.217 #
22) L5 AR-1248-2	0.000	4.907	0	2046894	N.D.	210.508 #
23) L5 AR-1248-3	6.102	5.168	407328	590073	44.544	34.791
24) L5 AR-1248-4	6.102	5.186	407328	479883	45.455	35.540
25) L5 AR-1248-5	6.343	5.695	2167361	1298594	362.808	168.529 #
26) L6 AR-1254-1	6.292	5.168	558178	590073	39.652	31.903
27) L6 AR-1254-2	6.552	5.359	783700	4981009	90.107	301.219 #
28) L6 AR-1254-3	6.646	5.695	813784	1298594	52.505	47.201
31) L7 AR-1260-1	0.000	5.822	0	737032	N.D.	34.527 #
32) L7 AR-1260-2	7.052	6.002	610252	942726	35.073	29.846
33) L7 AR-1260-3	7.336	6.152	288434	325620	14.370	12.476
34) L7 AR-1260-4	0.000	6.324	0	642720	N.D.	18.850 #
35) L7 AR-1260-5	0.000	6.853	0	549194	N.D.	10.236 #
36) L8 AR-1262-1	0.000	6.002	0	942726	N.D.	42.445 #
37) L8 AR-1262-2	7.052	6.152	610252	325620	52.415	16.192 #
38) L8 AR-1262-3	7.336	6.360	288434	533115	25.067	14.383 #
39) L8 AR-1262-4	7.655	6.605	1008011	1230636	65.708	44.433 #
40) L8 AR-1262-5	0.000	6.853	0	549194	N.D.	8.668 #
41) L9 AR-1268-1	8.212	7.127	3897017	5647327	103.132	77.055 #
42) L9 AR-1268-2	8.295	7.191	2056723	3054678	61.987	47.246
43) L9 AR-1268-3	8.496	7.387	3624983	5357079	128.050	98.037
44) L9 AR-1268-4	8.867	7.679	507396	625059	40.708	28.137 #
45) L9 AR-1268-5	9.226	7.943	9537025	12491493	118.062	86.774 #

Data Path : P:\HPCHEM1\ECD_O\Data\PO020218\
 Data File : PO041975.D
 Signal(s) : Signal #1: ECD1A.CH Signal #2: ECD2B.CH
 Acq On : 31 Jan 2018 12:17
 Operator : SM/UA
 Sample : J1370-07
 Misc :
 ALS Vial : 10 Sample Multiplier: 1

Instrument :
 ECD_O
 ClientSampleId :
 15K-7B

Integration File signal 1: autoint1.e
 Integration File signal 2: autoint2.e
 Quant Time: Jan 31 14:08:24 2018
 Quant Method : P:\HPCHEM1\ECD_O\PO012318.M
 Quant Title : GC EXTRACTABLES
 QLast Update : Tue Jan 23 01:50:31 2018
 Response via : Initial Calibration
 Integrator: ChemStation 6890 Scale Mode: Small noise peaks clipped

Volume Inj. : 2 µl
 Signal #1 Phase : ZB-MR1 Signal #2 Phase: ZB-MR2
 Signal #1 Info : 30Mx0.32mmx 0.50µ Signal #2 Info : 30M x 0.32mm x 0.25µm

Compound	RT#1	RT#2	Resp#1	Resp#2	ng/ml	ng/ml
----------	------	------	--------	--------	-------	-------

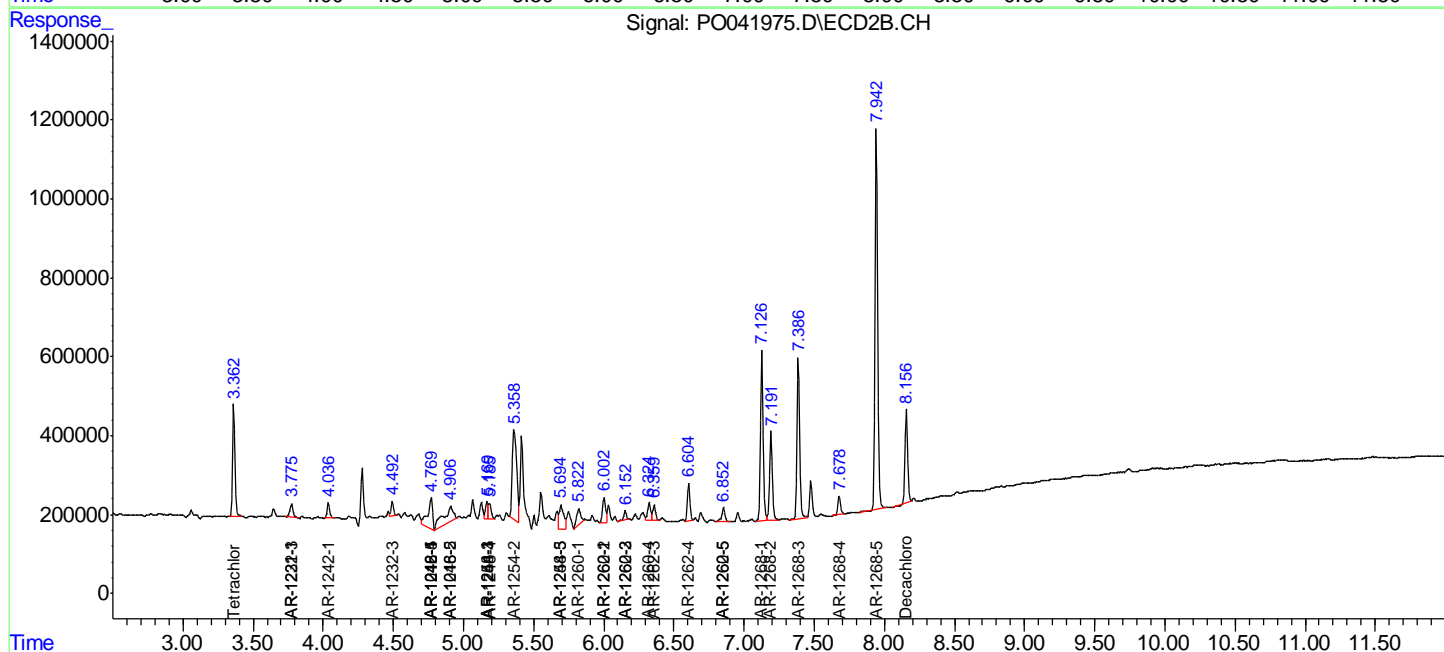
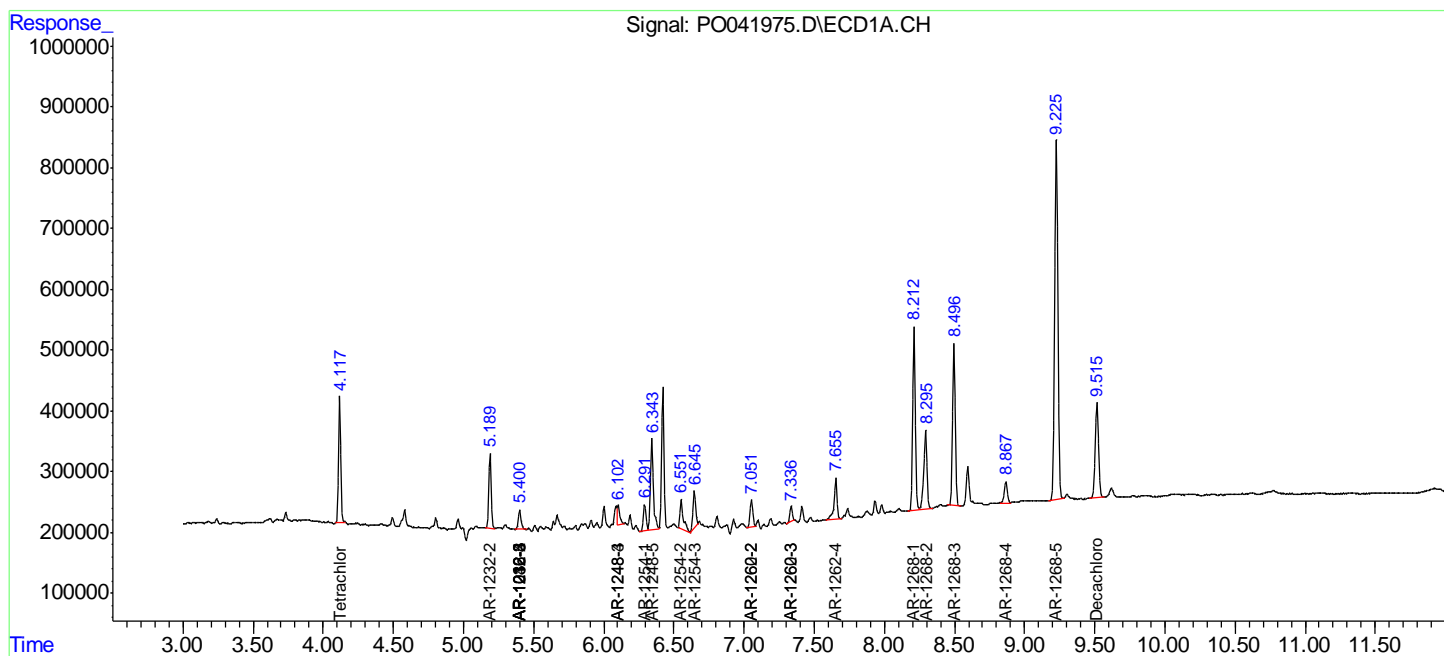
(f)=RT Delta > 1/2 Window (#)=Amounts differ by > 25% (m)=manual int.

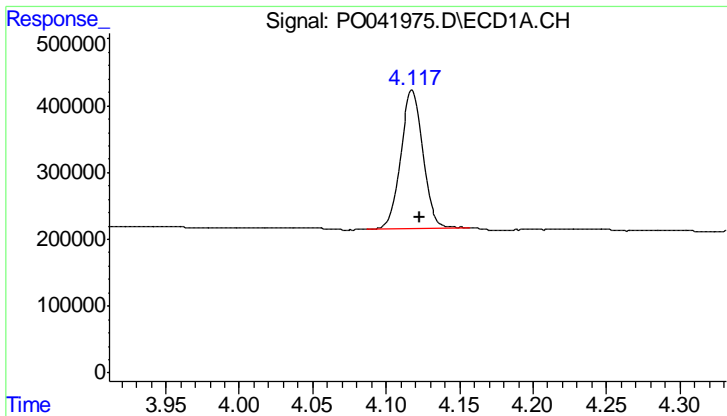
Data Path : P:\HPCHEM1\ECD_O\Data\PO020218\
 Data File : PO041975.D
 Signal(s) : Signal #1: ECD1A.CH Signal #2: ECD2B.CH
 Acq On : 31 Jan 2018 12:17
 Operator : SM/UA
 Sample : J1370-07
 Misc :
 ALS Vial : 10 Sample Multiplier: 1

Instrument :
 ECD_O
 ClientSampled :
 15K-7B

Integration File signal 1: autoint1.e
 Integration File signal 2: autoint2.e
 Quant Time: Jan 31 14:08:24 2018
 Quant Method : P:\HPCHEM1\ECD_O\PO012318.M
 Quant Title : GC EXTRACTABLES
 QLast Update : Tue Jan 23 01:50:31 2018
 Response via : Initial Calibration
 Integrator: ChemStation 6890 Scale Mode: Small noise peaks clipped

Volume Inj. : 2 µl
 Signal #1 Phase : ZB-MR1 Signal #2 Phase: ZB-MR2
 Signal #1 Info : 30Mx0.32mmx 0.50µ Signal #2 Info : 30M x 0.32mm x 0.25µm

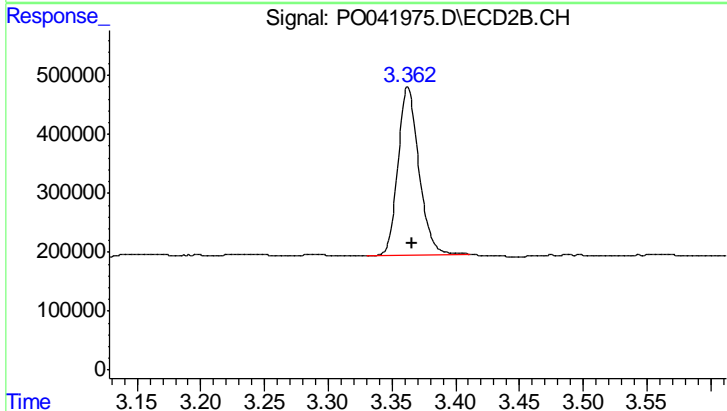




#1 Tetrachloro-m-xylene

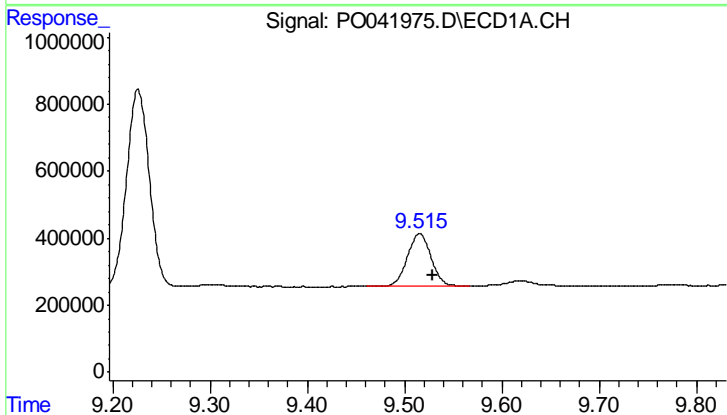
R.T.: 4.118 min
 Delta R.T.: -0.006 min
 Response: 2171155
 Conc: 11.25 ng/ml

Instrument :
 ECD_O
 ClientSampled :
 15K-7B



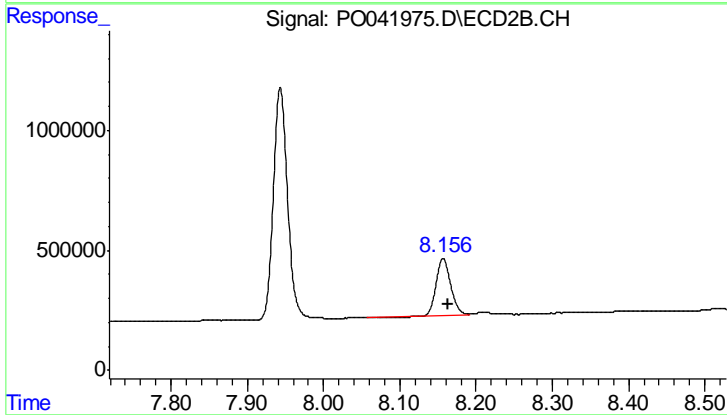
#1 Tetrachloro-m-xylene

R.T.: 3.363 min
 Delta R.T.: -0.003 min
 Response: 3252420
 Conc: 11.20 ng/ml



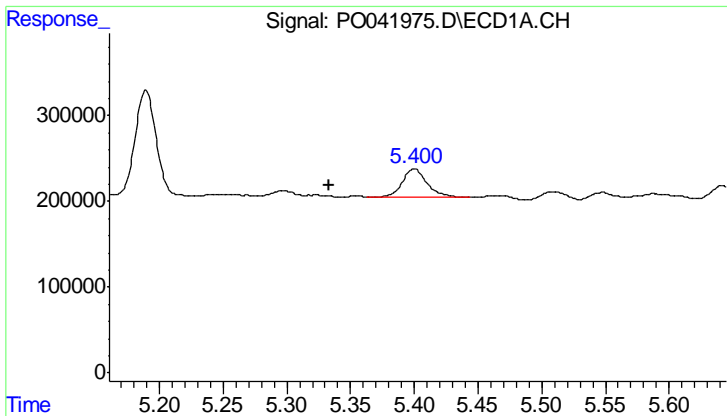
#2 Decachlorobiphenyl

R.T.: 9.515 min
 Delta R.T.: -0.013 min
 Response: 2630932
 Conc: 11.20 ng/ml



#2 Decachlorobiphenyl

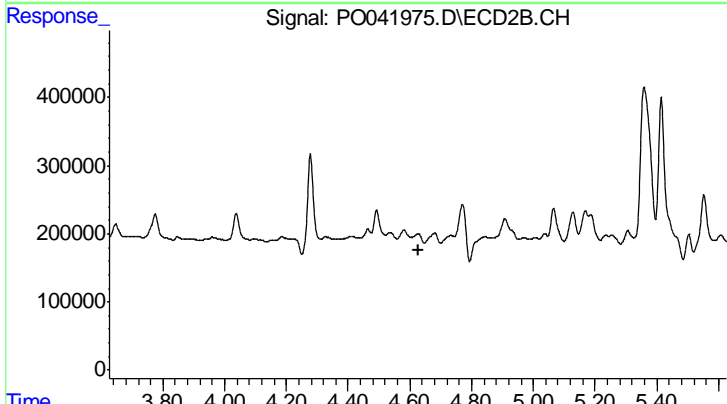
R.T.: 8.157 min
 Delta R.T.: -0.006 min
 Response: 3011274
 Conc: 8.42 ng/ml



#4 AR-1016-2

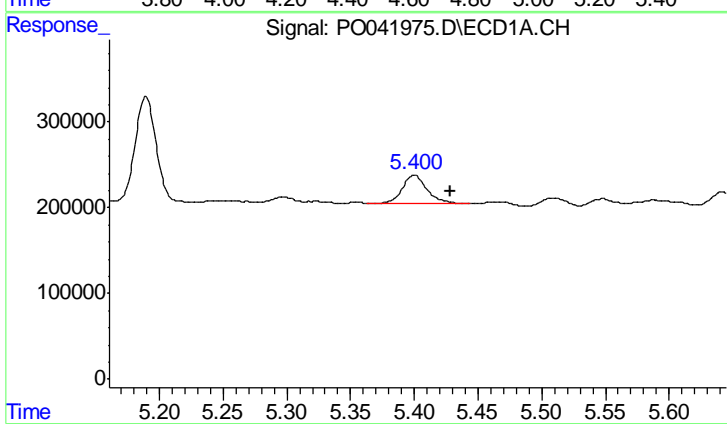
R.T.: 5.400 min
 Delta R.T.: 0.067 min
 Response: 433254
 Conc: 60.41 ng/ml

Instrument :
 ECD_O
 ClientSampleId :
 15K-7B



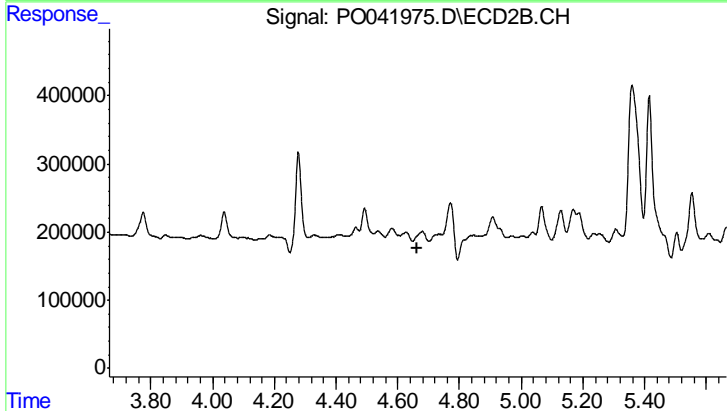
#4 AR-1016-2

R.T.: 0.000 min
 Exp R.T. : 4.627 min
 Response: 0
 Conc: N.D.



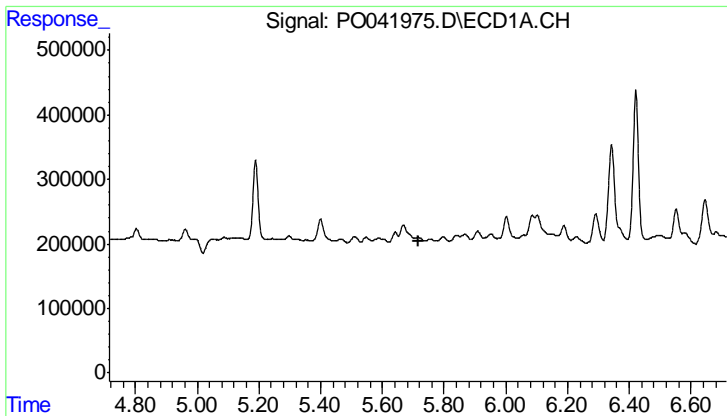
#5 AR-1016-3

R.T.: 5.400 min
 Delta R.T.: -0.028 min
 Response: 433254
 Conc: 72.70 ng/ml



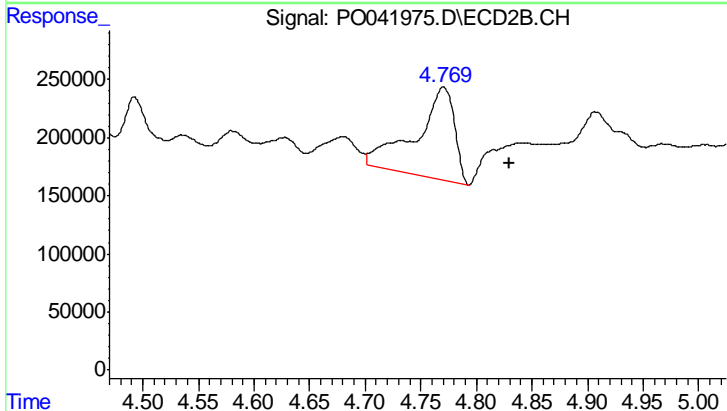
#5 AR-1016-3

R.T.: 0.000 min
 Exp R.T. : 4.665 min
 Response: 0
 Conc: N.D.

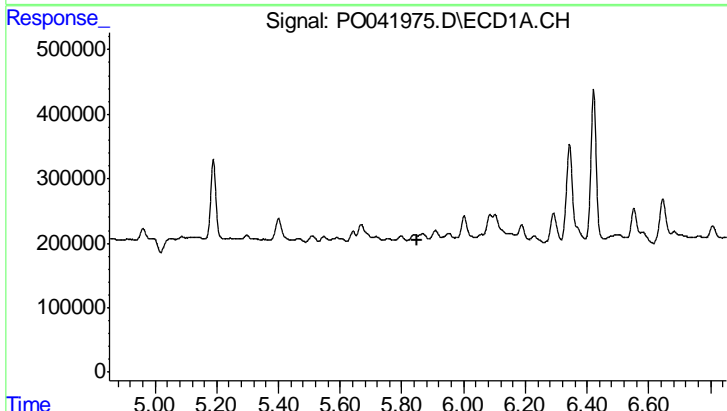


#6 AR-1016-4
 R.T.: 0.000 min
 Exp R.T.: 5.715 min
 Response: 0
 Conc: N.D.

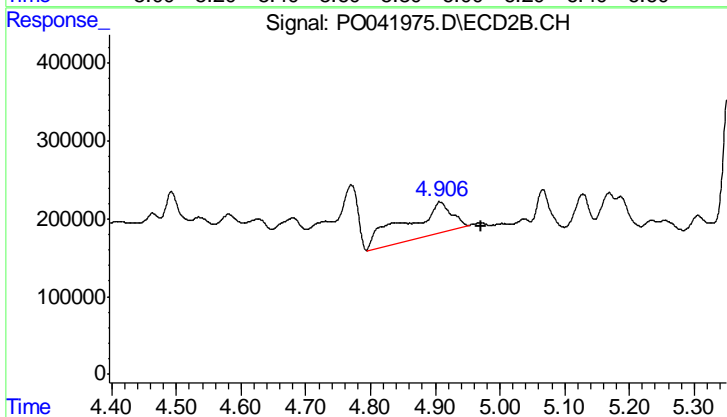
Instrument :
 ECD_O
 ClientSampled :
 15K-7B



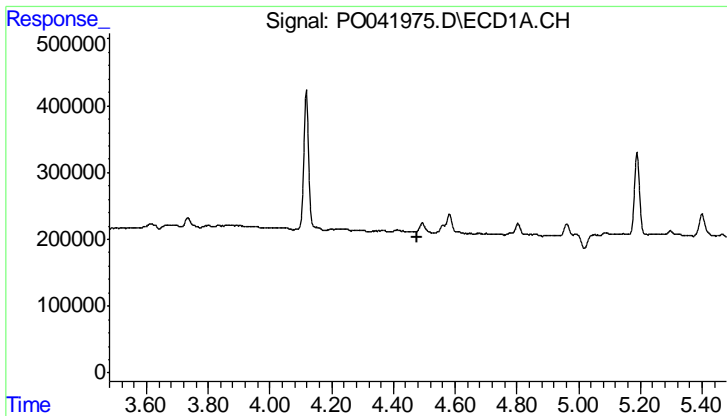
#6 AR-1016-4
 R.T.: 4.770 min
 Delta R.T.: -0.060 min
 Response: 1926398
 Conc: 206.73 ng/ml



#7 AR-1016-5
 R.T.: 0.000 min
 Exp R.T.: 5.852 min
 Response: 0
 Conc: N.D.



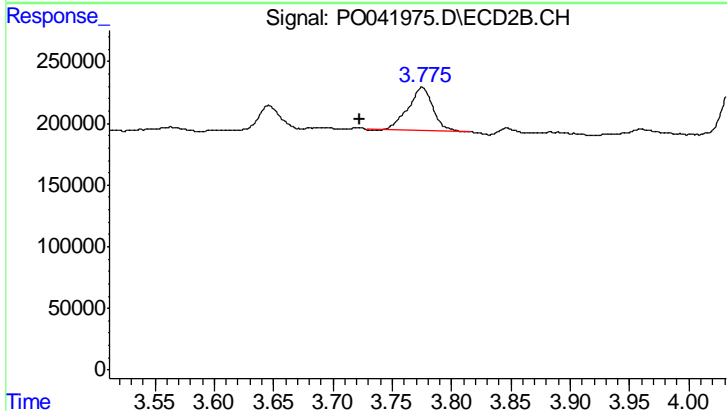
#7 AR-1016-5
 R.T.: 4.907 min
 Delta R.T.: -0.064 min
 Response: 2046894
 Conc: 206.45 ng/ml



#10 AR-1221-3

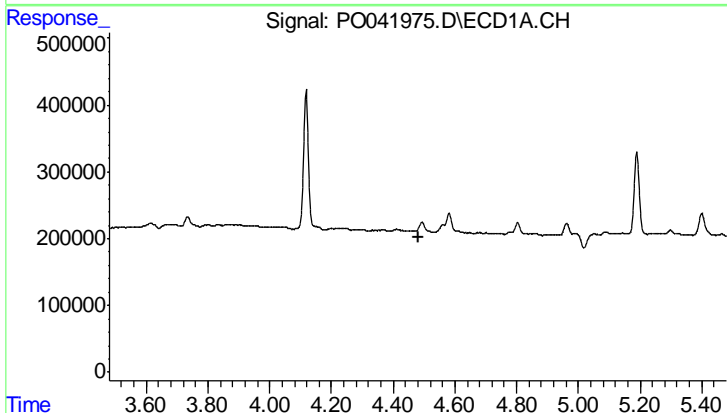
R.T.: 0.000 min
 Exp R.T.: 4.479 min
 Response: 0
 Conc: N.D.

Instrument :
 ECD_O
 ClientSampled :
 15K-7B



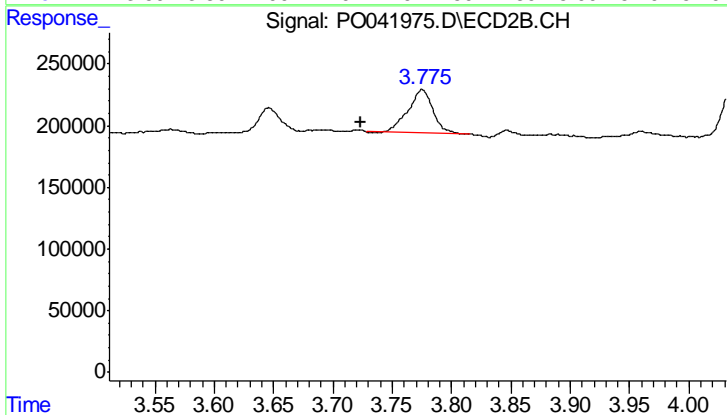
#10 AR-1221-3

R.T.: 3.775 min
 Delta R.T.: 0.053 min
 Response: 516140
 Conc: 82.53 ng/ml



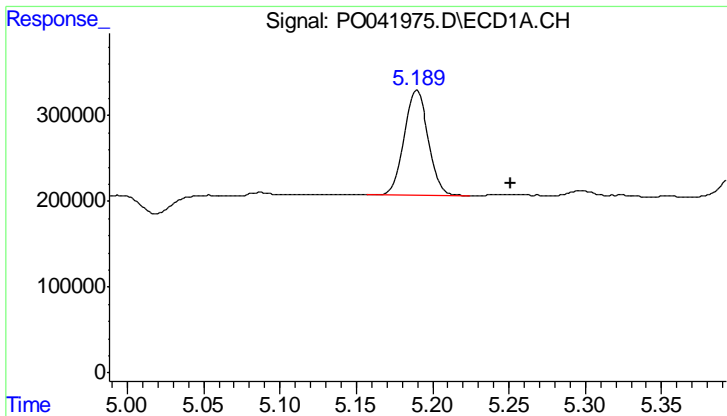
#11 AR-1232-1

R.T.: 0.000 min
 Exp R.T.: 4.480 min
 Response: 0
 Conc: N.D.



#11 AR-1232-1

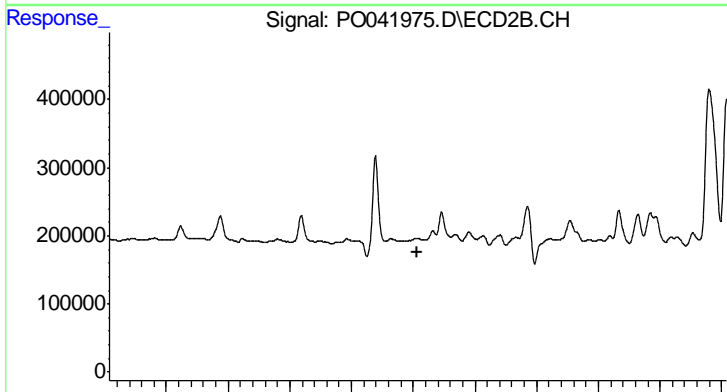
R.T.: 3.775 min
 Delta R.T.: 0.052 min
 Response: 516140
 Conc: 104.82 ng/ml



#12 AR-1232-2

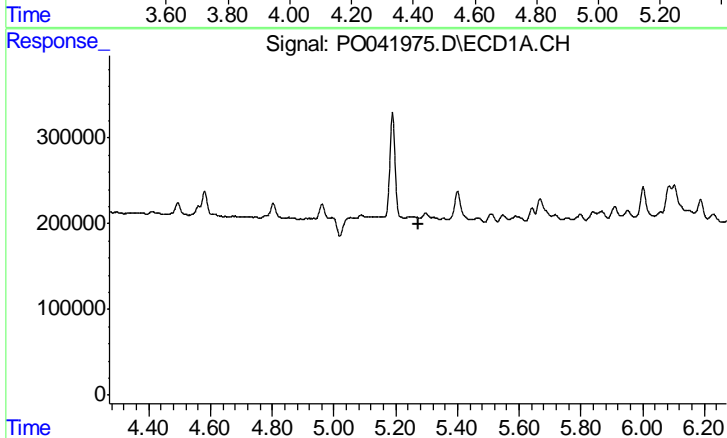
R.T.: 5.189 min
 Delta R.T.: -0.062 min
 Response: 1380814
 Conc: 524.68 ng/ml

Instrument :
 ECD_O
 ClientSampleId :
 15K-7B



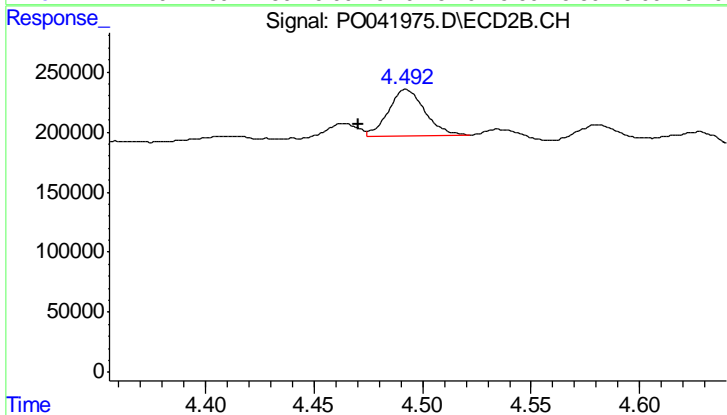
#12 AR-1232-2

R.T.: 0.000 min
 Exp R.T.: 4.415 min
 Response: 0
 Conc: N.D.



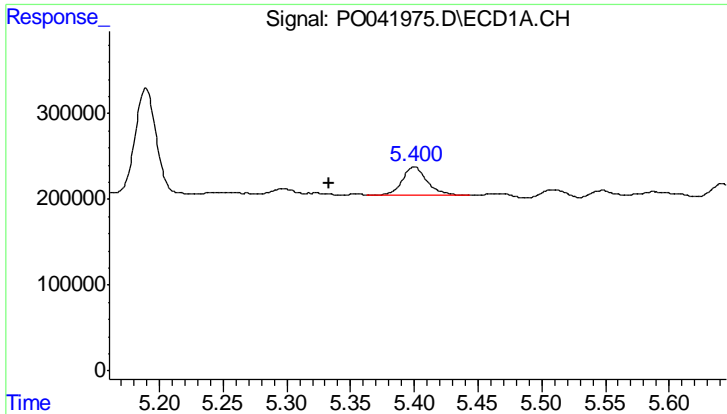
#13 AR-1232-3

R.T.: 0.000 min
 Exp R.T.: 5.272 min
 Response: 0
 Conc: N.D.



#13 AR-1232-3

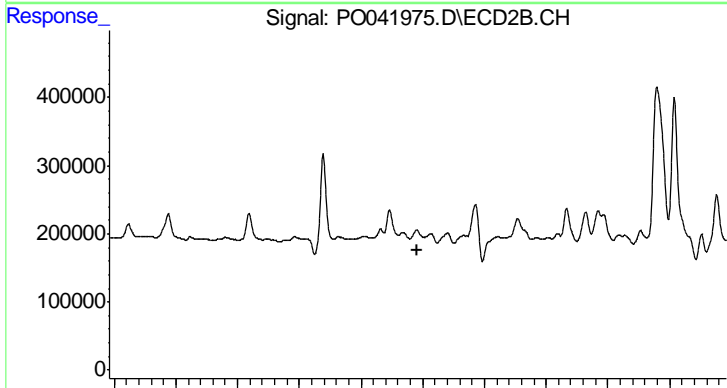
R.T.: 4.492 min
 Delta R.T.: 0.022 min
 Response: 457057
 Conc: 110.84 ng/ml



#14 AR-1232-4

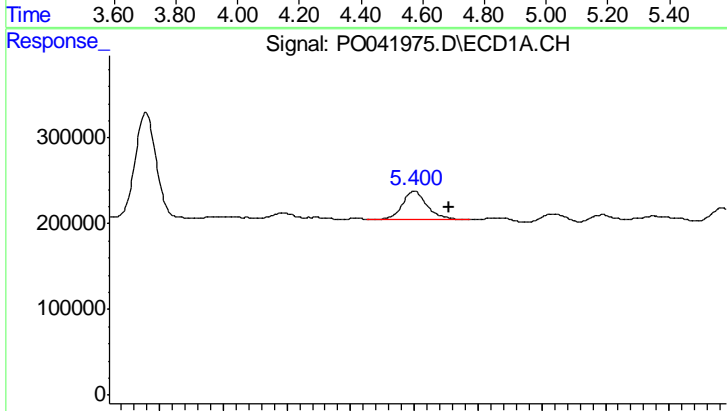
R.T.: 5.400 min
 Delta R.T.: 0.067 min
 Response: 433254
 Conc: 157.34 ng/ml

Instrument :
 ECD_O
 ClientSampleId :
 15K-7B



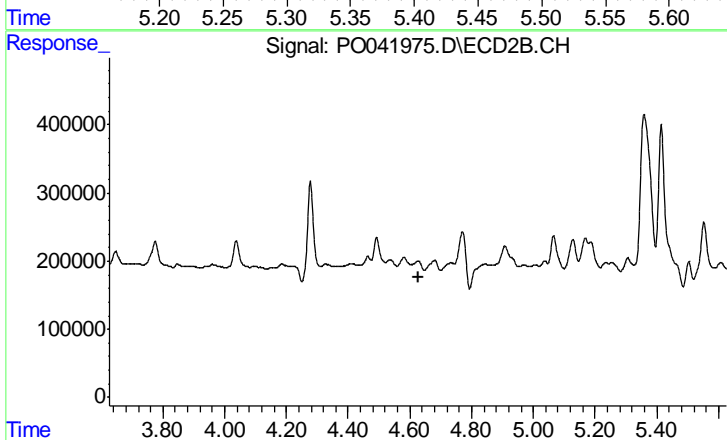
#14 AR-1232-4

R.T.: 0.000 min
 Exp R.T. : 4.584 min
 Response: 0
 Conc: N.D.



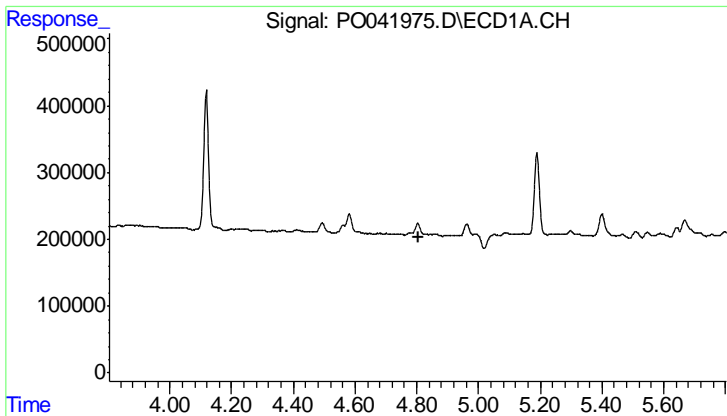
#15 AR-1232-5

R.T.: 5.400 min
 Delta R.T.: -0.027 min
 Response: 433254
 Conc: 206.33 ng/ml



#15 AR-1232-5

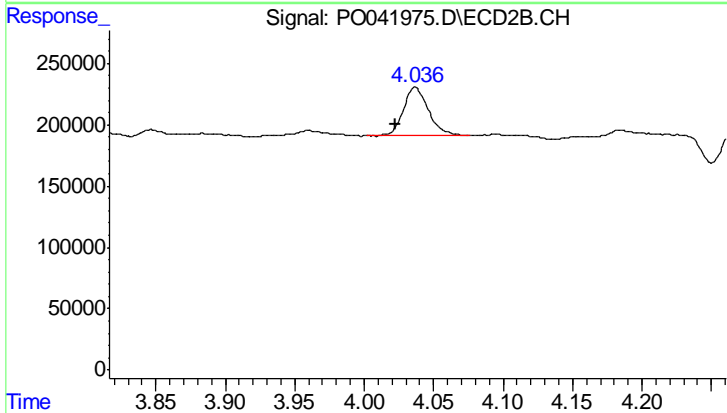
R.T.: 0.000 min
 Exp R.T. : 4.626 min
 Response: 0
 Conc: N.D.



#16 AR-1242-1

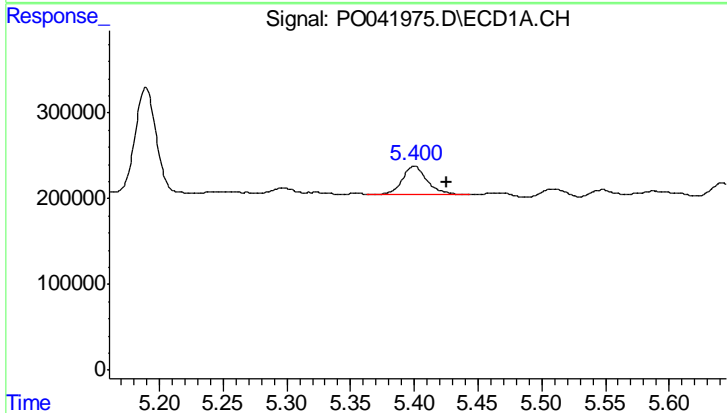
R.T.: 0.000 min
 Exp R.T.: 4.804 min
 Response: 0
 Conc: N.D.

Instrument :
 ECD_O
 ClientSampled :
 15K-7B



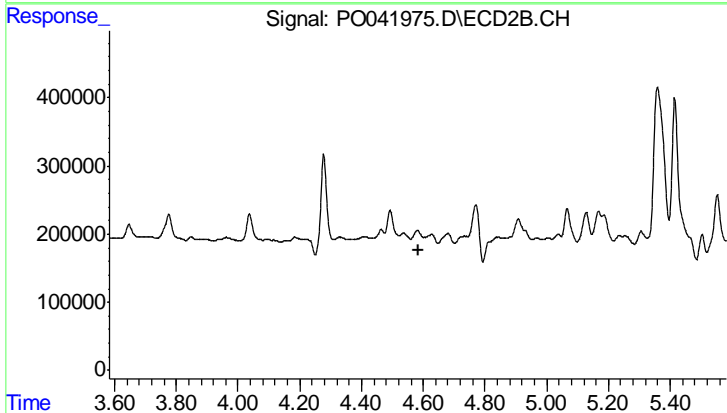
#16 AR-1242-1

R.T.: 4.037 min
 Delta R.T.: 0.015 min
 Response: 492297
 Conc: 193.99 ng/ml



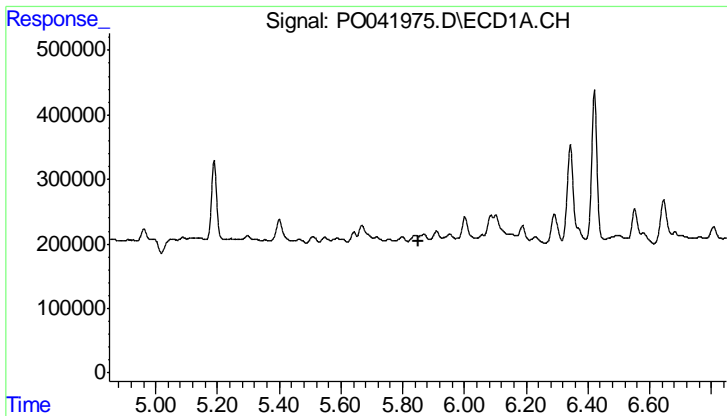
#18 AR-1242-3

R.T.: 5.400 min
 Delta R.T.: -0.026 min
 Response: 433254
 Conc: 117.86 ng/ml



#18 AR-1242-3

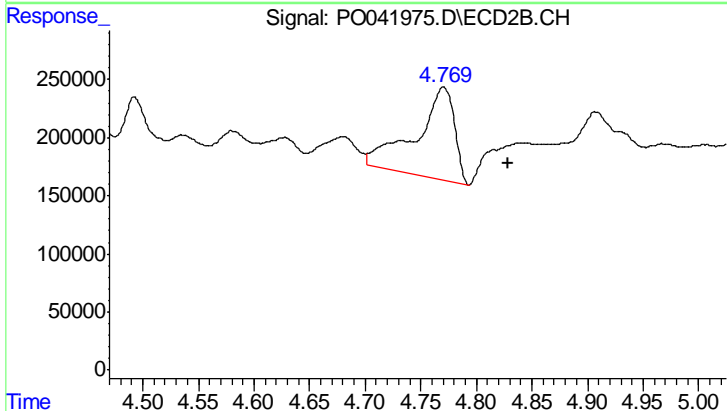
R.T.: 0.000 min
 Exp R.T.: 4.583 min
 Response: 0
 Conc: N.D.



#20 AR-1242-5

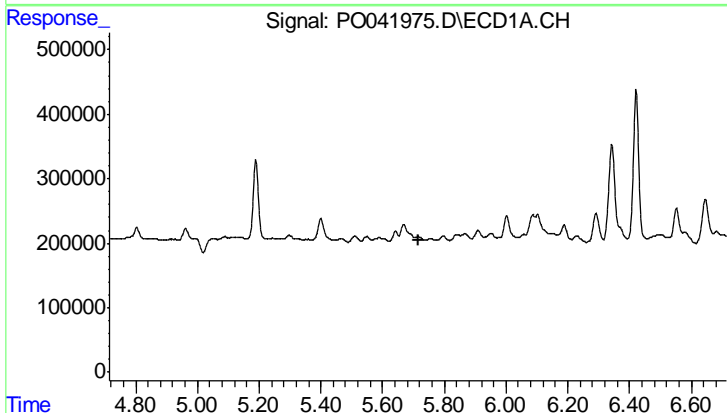
R.T.: 0.000 min
 Exp R.T.: 5.850 min
 Response: 0
 Conc: N.D.

Instrument :
 ECD_O
 ClientSampled :
 15K-7B



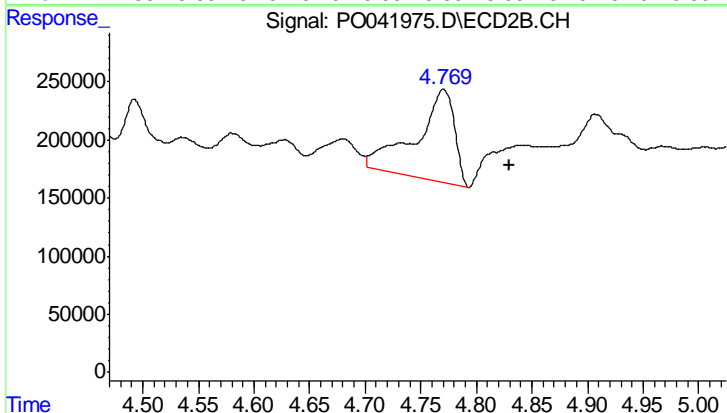
#20 AR-1242-5

R.T.: 4.770 min
 Delta R.T.: -0.059 min
 Response: 1926398
 Conc: 333.17 ng/ml



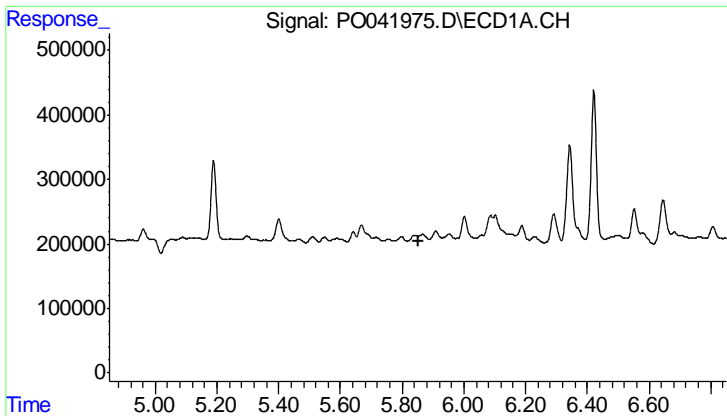
#21 AR-1248-1

R.T.: 0.000 min
 Exp R.T.: 5.715 min
 Response: 0
 Conc: N.D.



#21 AR-1248-1

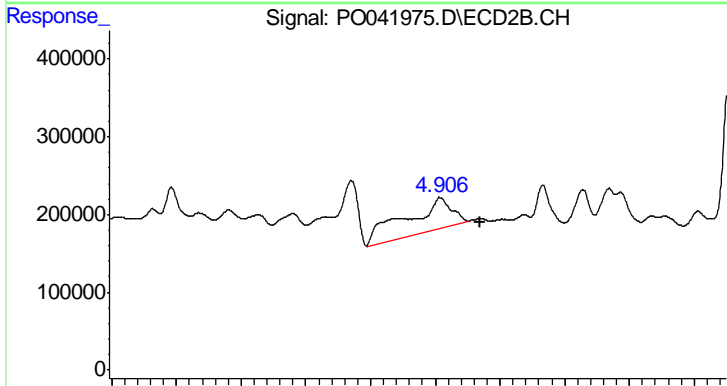
R.T.: 4.770 min
 Delta R.T.: -0.059 min
 Response: 1926398
 Conc: 176.22 ng/ml



#22 AR-1248-2

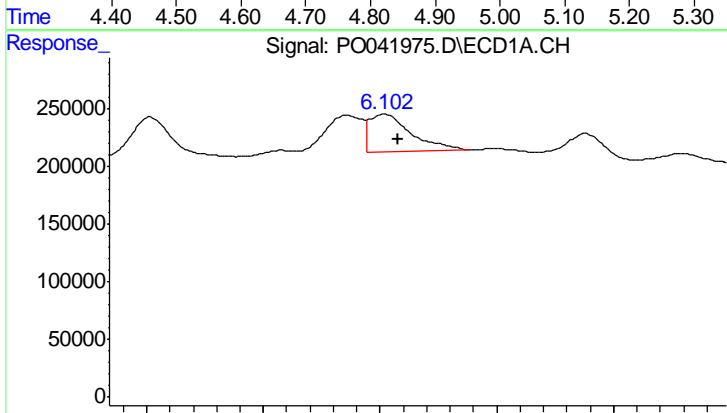
R.T.: 0.000 min
 Exp R.T.: 5.851 min
 Response: 0
 Conc: N.D.

Instrument :
 ECD_O
 ClientSampled :
 15K-7B



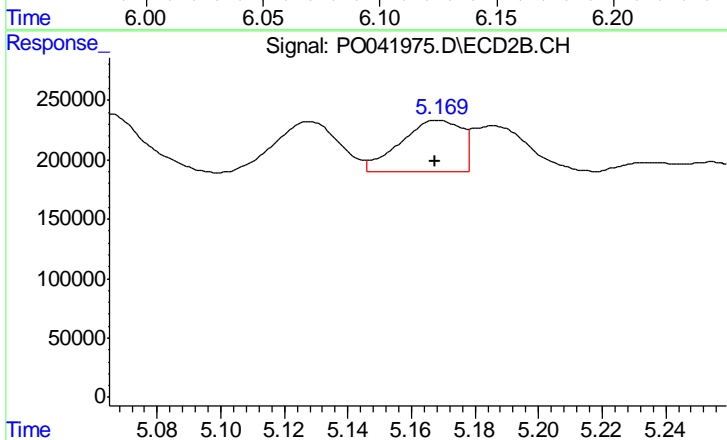
#22 AR-1248-2

R.T.: 4.907 min
 Delta R.T.: -0.062 min
 Response: 2046894
 Conc: 210.51 ng/ml



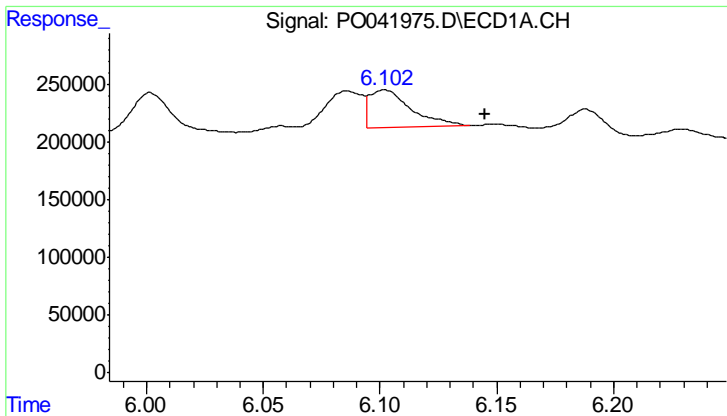
#23 AR-1248-3

R.T.: 6.102 min
 Delta R.T.: -0.006 min
 Response: 407328
 Conc: 44.54 ng/ml



#23 AR-1248-3

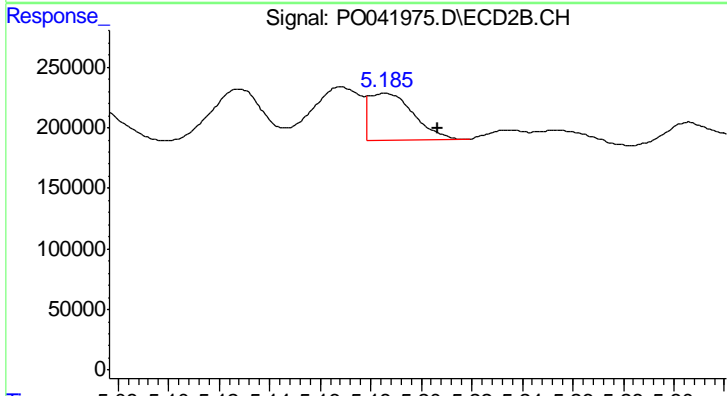
R.T.: 5.168 min
 Delta R.T.: 0.000 min
 Response: 590073
 Conc: 34.79 ng/ml



#24 AR-1248-4

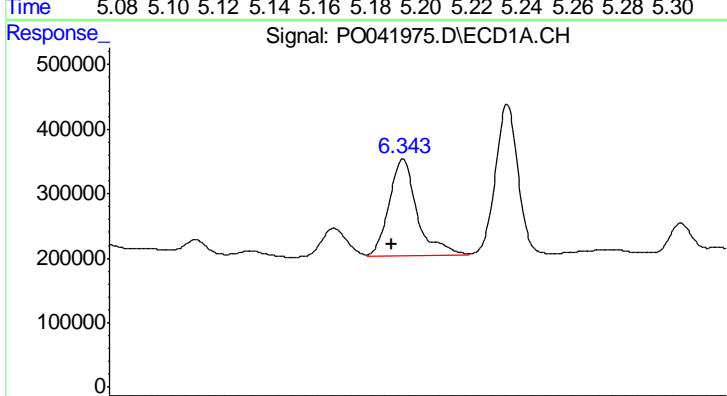
R.T.: 6.102 min
 Delta R.T.: -0.043 min
 Response: 407328
 Conc: 45.45 ng/ml

Instrument :
 ECD_O
 ClientSampled :
 15K-7B



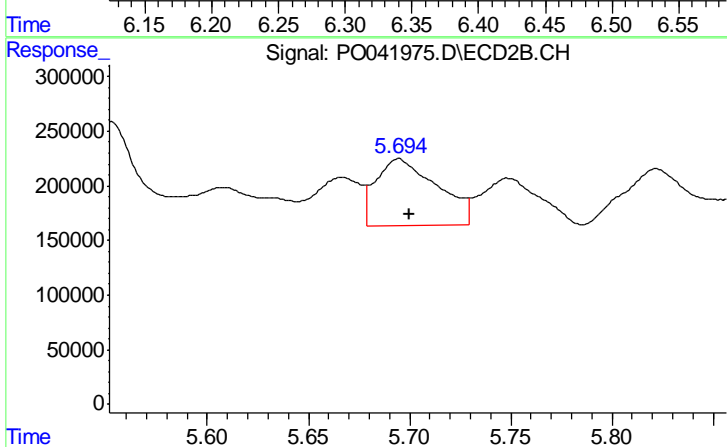
#24 AR-1248-4

R.T.: 5.186 min
 Delta R.T.: -0.021 min
 Response: 479883
 Conc: 35.54 ng/ml



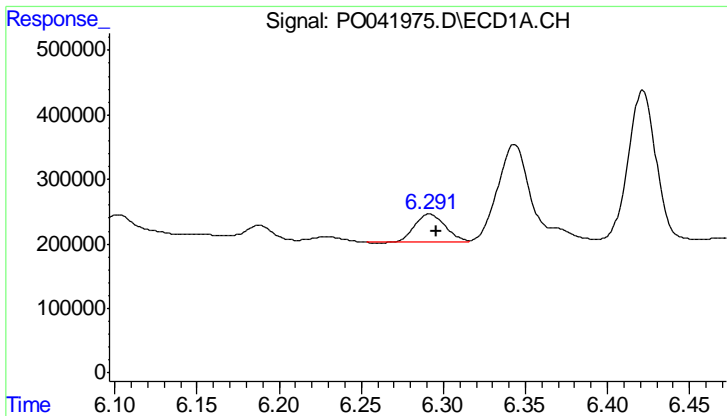
#25 AR-1248-5

R.T.: 6.343 min
 Delta R.T.: 0.008 min
 Response: 2167361
 Conc: 362.81 ng/ml



#25 AR-1248-5

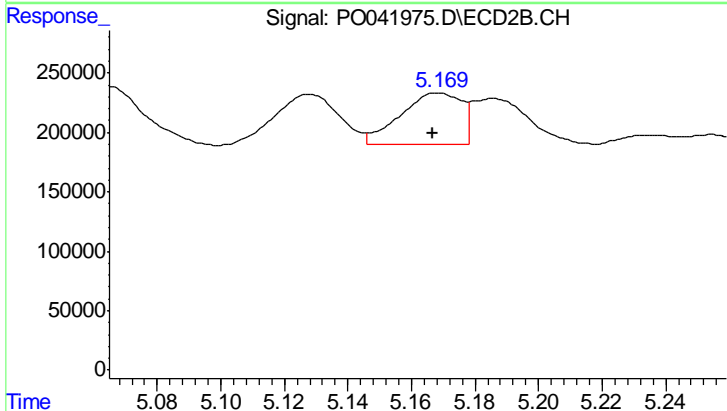
R.T.: 5.695 min
 Delta R.T.: -0.005 min
 Response: 1298594
 Conc: 168.53 ng/ml



#26 AR-1254-1

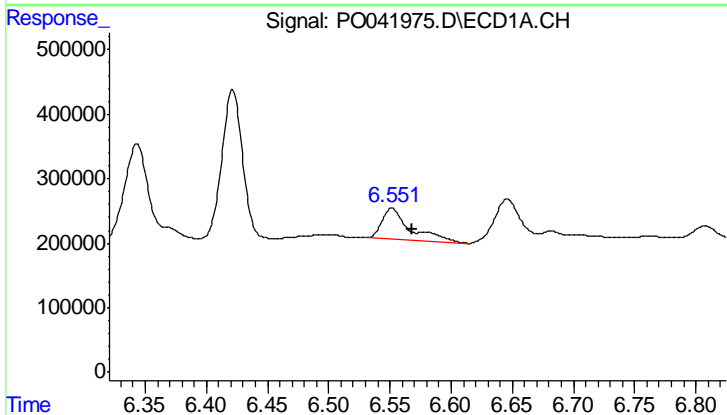
R.T.: 6.292 min
 Delta R.T.: -0.004 min
 Response: 558178
 Conc: 39.65 ng/ml

Instrument :
 ECD_O
 ClientSampled :
 15K-7B



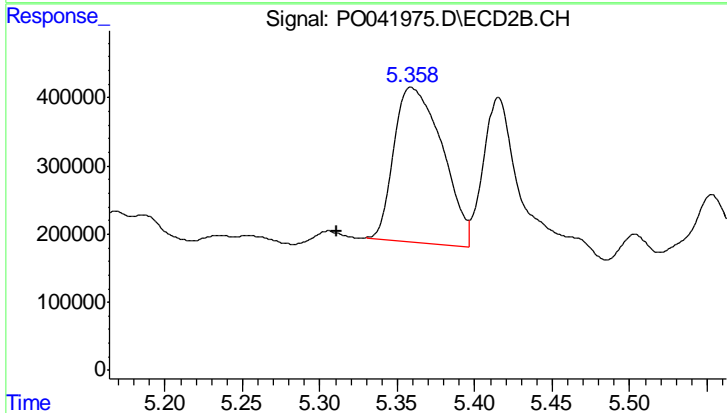
#26 AR-1254-1

R.T.: 5.168 min
 Delta R.T.: 0.002 min
 Response: 590073
 Conc: 31.90 ng/ml



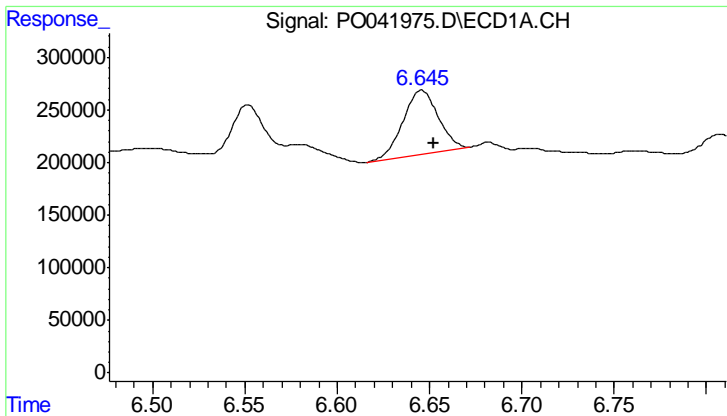
#27 AR-1254-2

R.T.: 6.552 min
 Delta R.T.: -0.017 min
 Response: 783700
 Conc: 90.11 ng/ml



#27 AR-1254-2

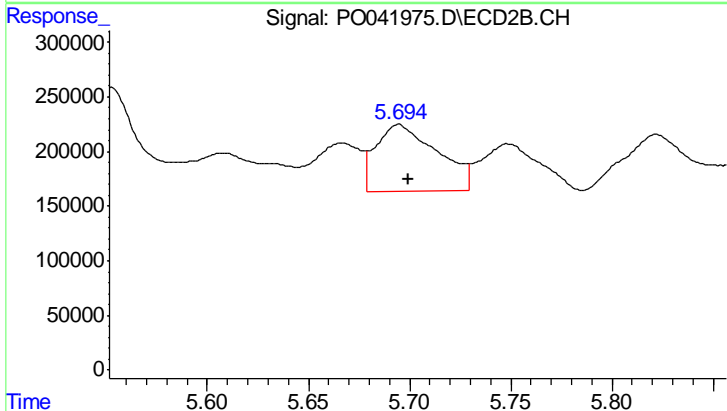
R.T.: 5.359 min
 Delta R.T.: 0.048 min
 Response: 4981009
 Conc: 301.22 ng/ml



#28 AR-1254-3

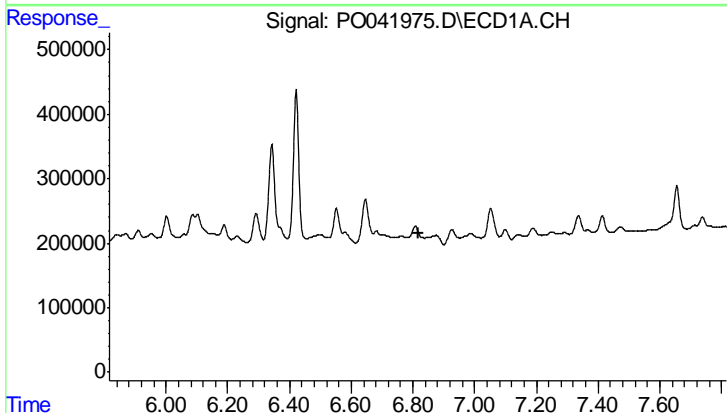
R.T.: 6.646 min
 Delta R.T.: -0.006 min
 Response: 813784
 Conc: 52.51 ng/ml

Instrument :
 ECD_O
 ClientSampled :
 15K-7B



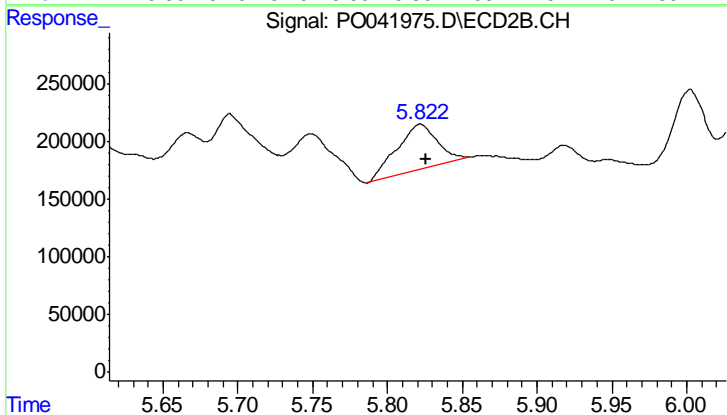
#28 AR-1254-3

R.T.: 5.695 min
 Delta R.T.: -0.005 min
 Response: 1298594
 Conc: 47.20 ng/ml



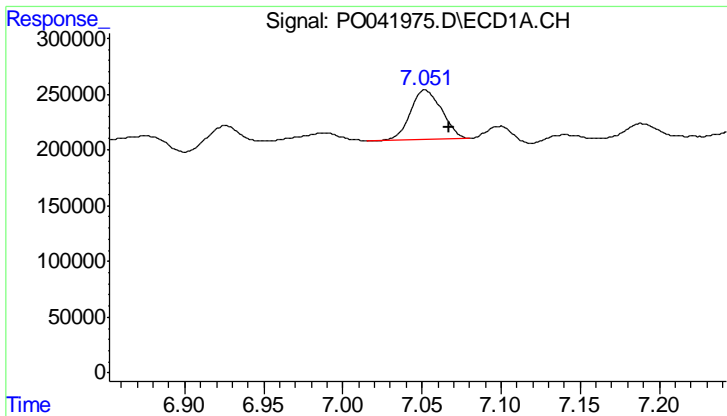
#31 AR-1260-1

R.T.: 0.000 min
 Exp R.T. : 6.816 min
 Response: 0
 Conc: N.D.



#31 AR-1260-1

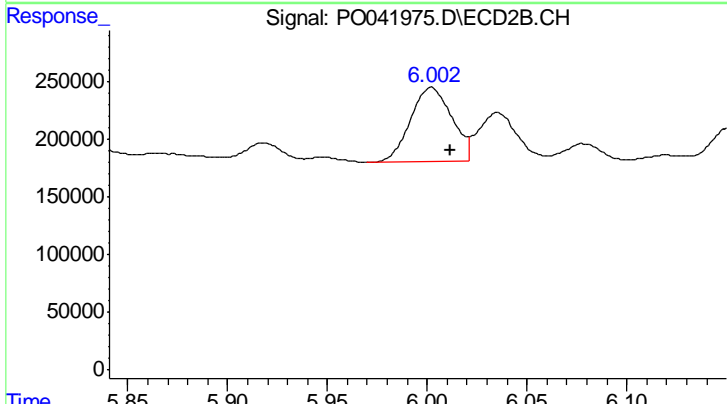
R.T.: 5.822 min
 Delta R.T.: -0.004 min
 Response: 737032
 Conc: 34.53 ng/ml



#32 AR-1260-2

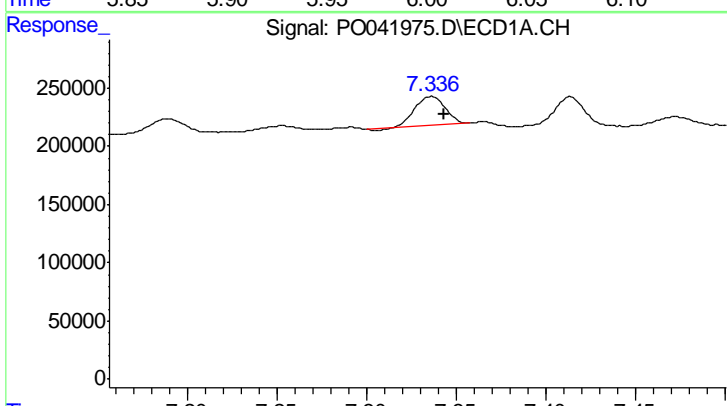
R.T.: 7.052 min
 Delta R.T.: -0.016 min
 Response: 610252
 Conc: 35.07 ng/ml

Instrument :
 ECD_O
 ClientSampled :
 15K-7B



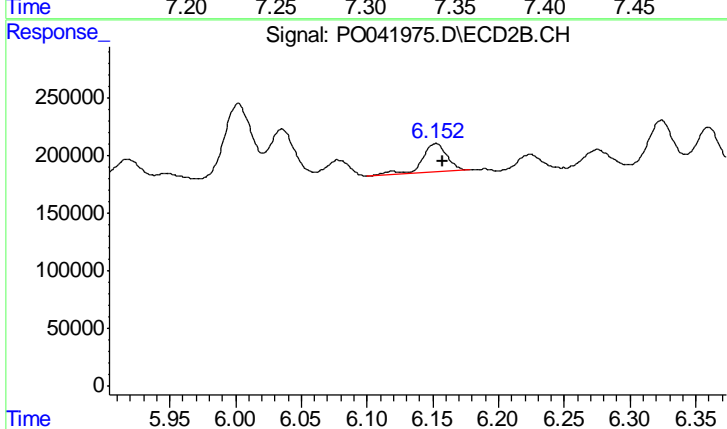
#32 AR-1260-2

R.T.: 6.002 min
 Delta R.T.: -0.010 min
 Response: 942726
 Conc: 29.85 ng/ml



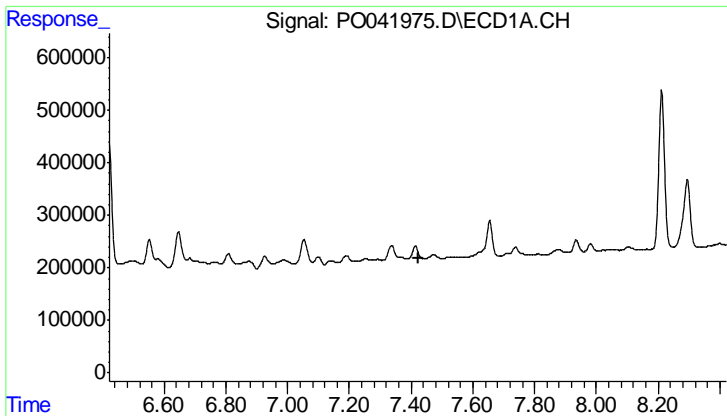
#33 AR-1260-3

R.T.: 7.336 min
 Delta R.T.: -0.007 min
 Response: 288434
 Conc: 14.37 ng/ml



#33 AR-1260-3

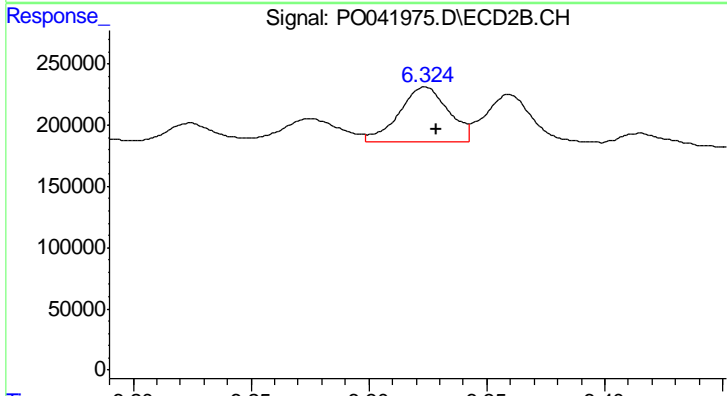
R.T.: 6.152 min
 Delta R.T.: -0.005 min
 Response: 325620
 Conc: 12.48 ng/ml



#34 AR-1260-4

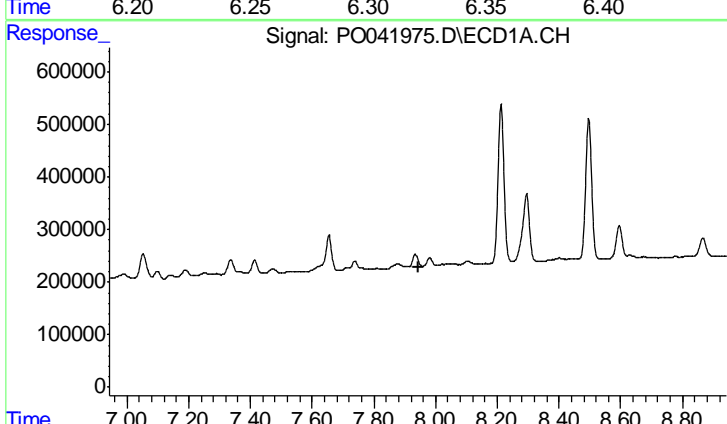
R.T.: 0.000 min
 Exp R.T.: 7.422 min
 Response: 0
 Conc: N.D.

Instrument :
 ECD_O
 ClientSampled :
 15K-7B



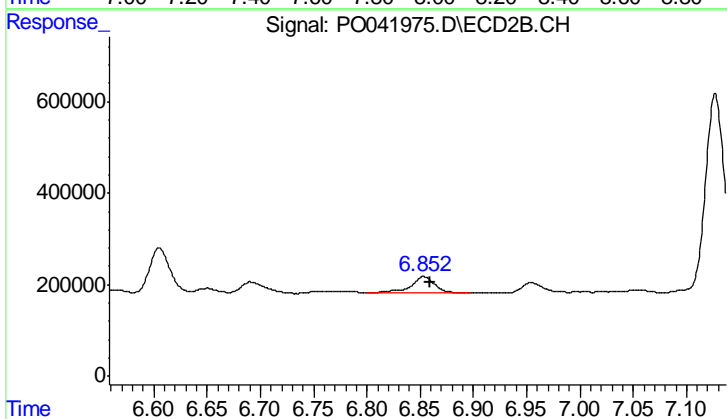
#34 AR-1260-4

R.T.: 6.324 min
 Delta R.T.: -0.005 min
 Response: 642720
 Conc: 18.85 ng/ml



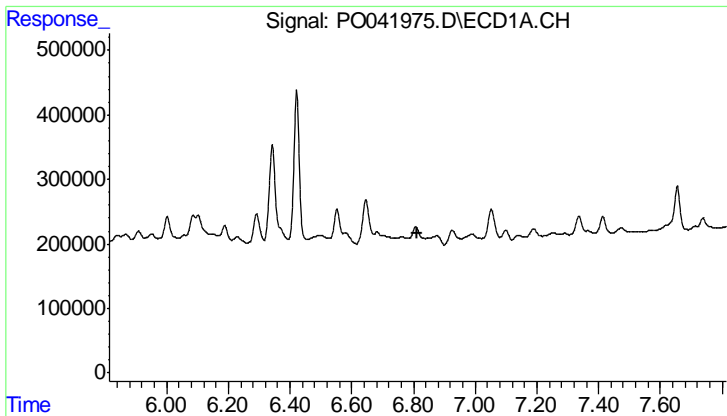
#35 AR-1260-5

R.T.: 0.000 min
 Exp R.T.: 7.943 min
 Response: 0
 Conc: N.D.



#35 AR-1260-5

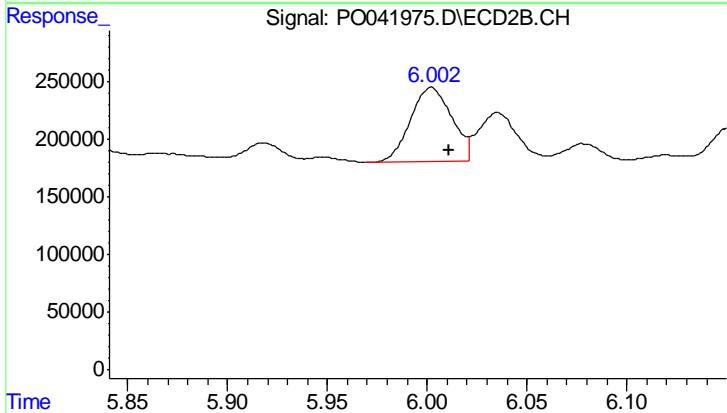
R.T.: 6.853 min
 Delta R.T.: -0.005 min
 Response: 549194
 Conc: 10.24 ng/ml



#36 AR-1262-1

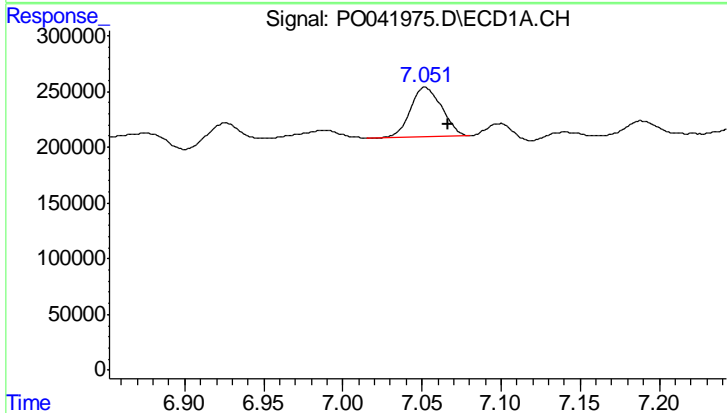
R.T.: 0.000 min
 Exp R.T.: 6.814 min
 Response: 0
 Conc: N.D.

Instrument :
 ECD_O
 ClientSampled :
 15K-7B



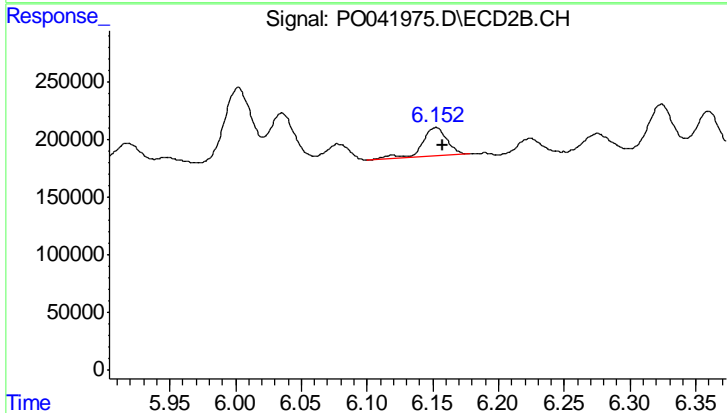
#36 AR-1262-1

R.T.: 6.002 min
 Delta R.T.: -0.009 min
 Response: 942726
 Conc: 42.44 ng/ml



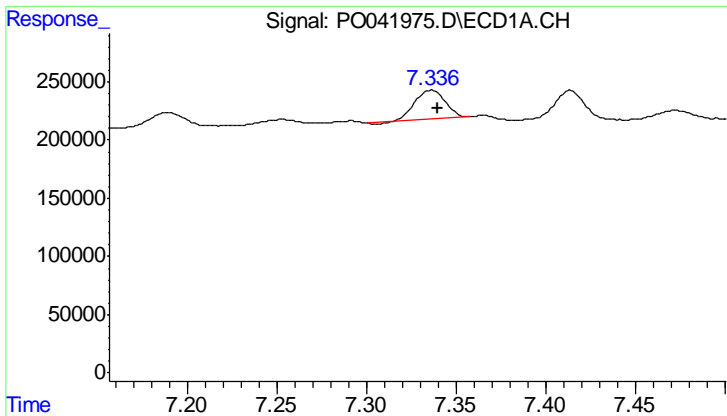
#37 AR-1262-2

R.T.: 7.052 min
 Delta R.T.: -0.015 min
 Response: 610252
 Conc: 52.41 ng/ml



#37 AR-1262-2

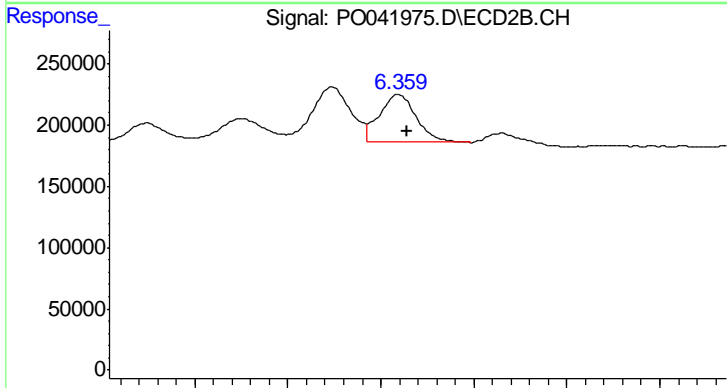
R.T.: 6.152 min
 Delta R.T.: -0.005 min
 Response: 325620
 Conc: 16.19 ng/ml



#38 AR-1262-3

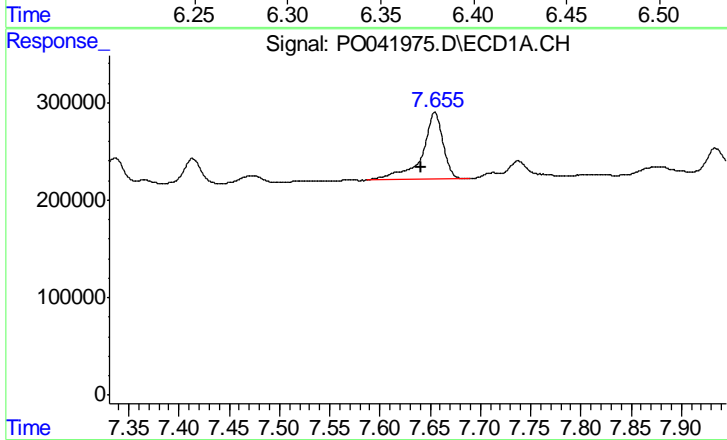
R.T.: 7.336 min
 Delta R.T.: -0.003 min
 Response: 288434
 Conc: 25.07 ng/ml

Instrument :
 ECD_O
 ClientSampled :
 15K-7B



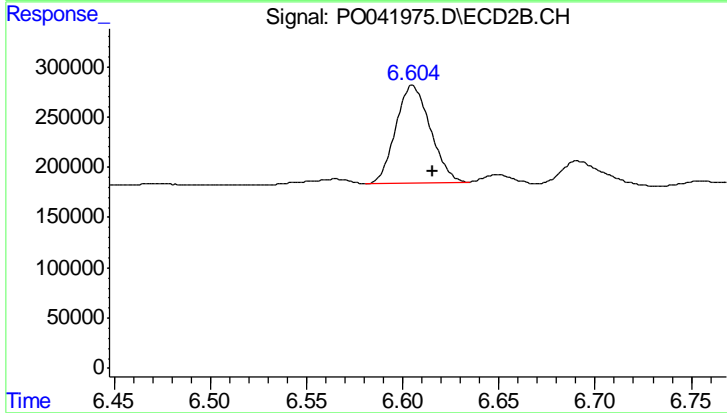
#38 AR-1262-3

R.T.: 6.360 min
 Delta R.T.: -0.005 min
 Response: 533115
 Conc: 14.38 ng/ml



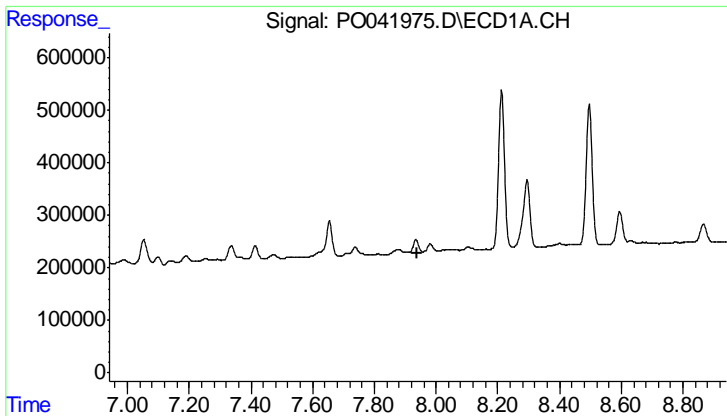
#39 AR-1262-4

R.T.: 7.655 min
 Delta R.T.: 0.014 min
 Response: 1008011
 Conc: 65.71 ng/ml



#39 AR-1262-4

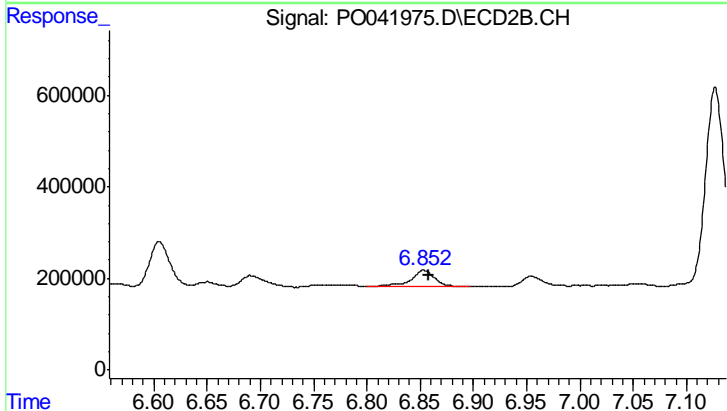
R.T.: 6.605 min
 Delta R.T.: -0.010 min
 Response: 1230636
 Conc: 44.43 ng/ml



#40 AR-1262-5

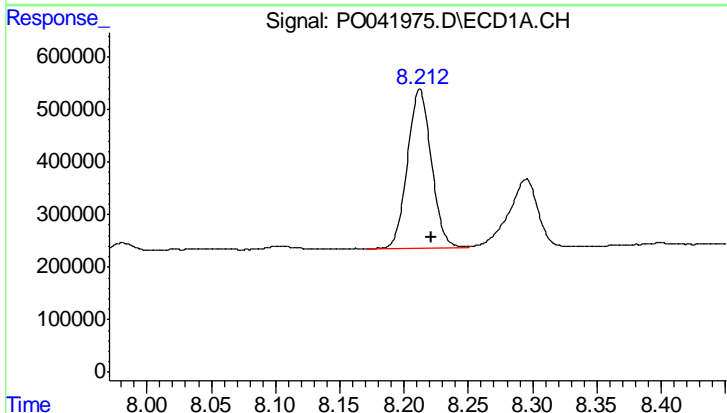
R.T.: 0.000 min
 Exp R.T.: 7.941 min
 Response: 0
 Conc: N.D.

Instrument :
 ECD_O
 ClientSampled :
 15K-7B



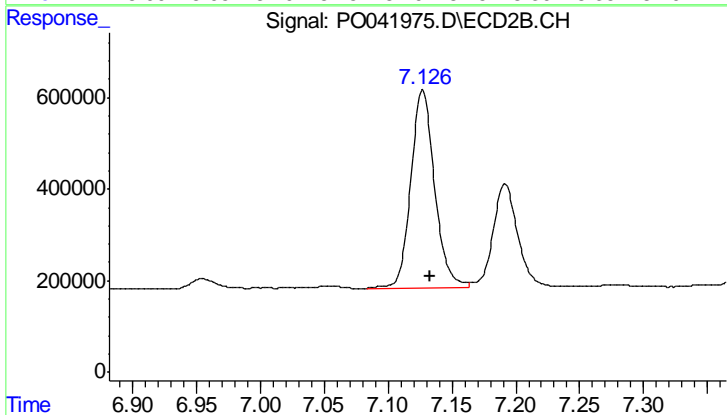
#40 AR-1262-5

R.T.: 6.853 min
 Delta R.T.: -0.004 min
 Response: 549194
 Conc: 8.67 ng/ml



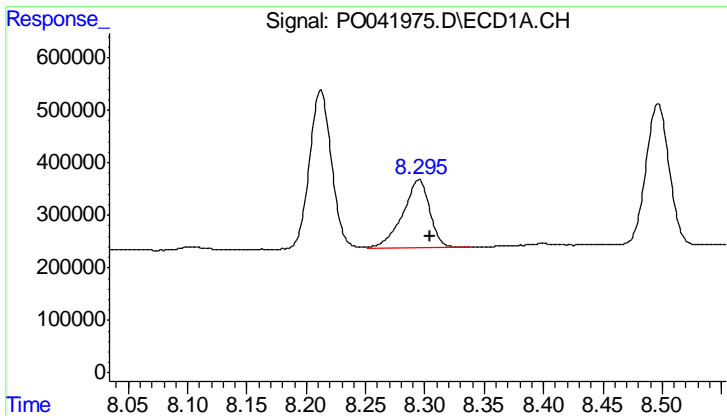
#41 AR-1268-1

R.T.: 8.212 min
 Delta R.T.: -0.009 min
 Response: 3897017
 Conc: 103.13 ng/ml



#41 AR-1268-1

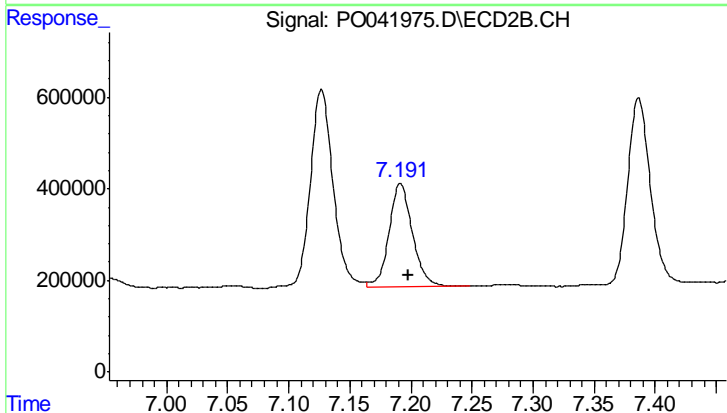
R.T.: 7.127 min
 Delta R.T.: -0.006 min
 Response: 5647327
 Conc: 77.06 ng/ml



#42 AR-1268-2

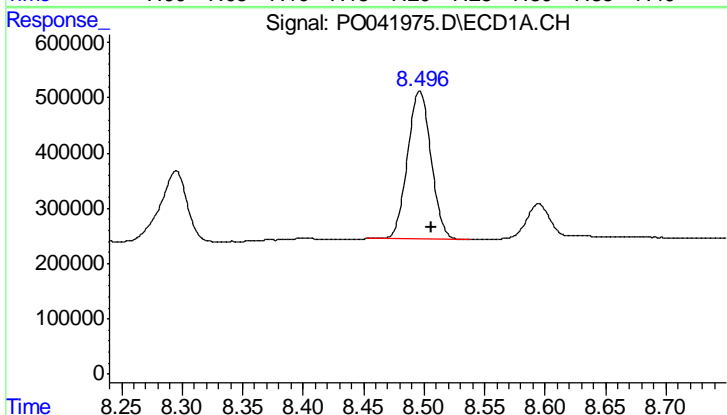
R.T.: 8.295 min
Delta R.T.: -0.010 min
Response: 2056723
Conc: 61.99 ng/ml

Instrument :
ECD_O
ClientSampleId :
15K-7B



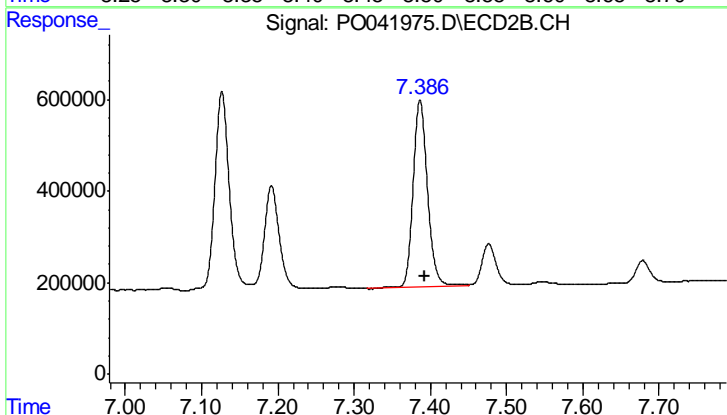
#42 AR-1268-2

R.T.: 7.191 min
Delta R.T.: -0.006 min
Response: 3054678
Conc: 47.25 ng/ml



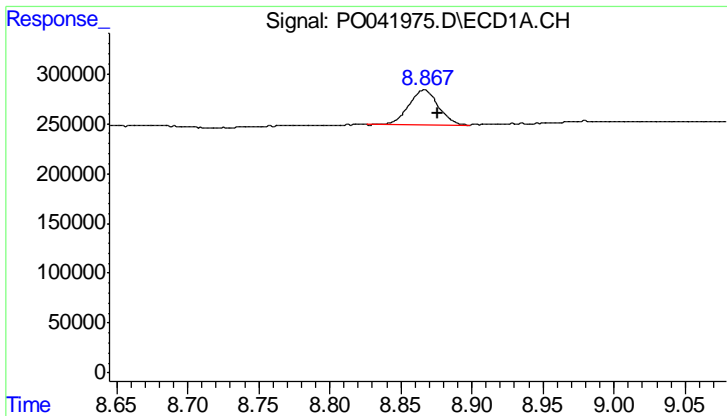
#43 AR-1268-3

R.T.: 8.496 min
Delta R.T.: -0.009 min
Response: 3624983
Conc: 128.05 ng/ml



#43 AR-1268-3

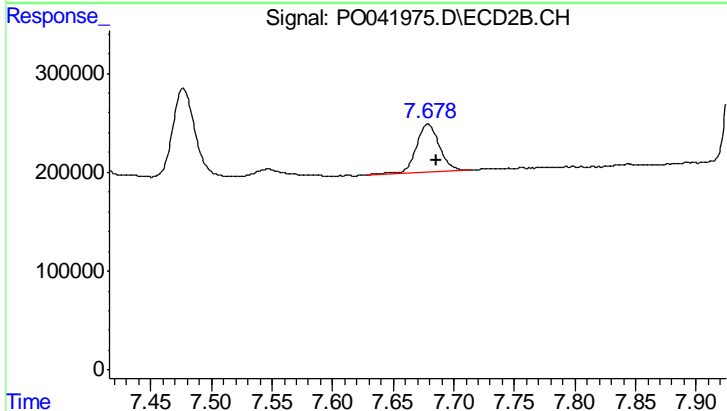
R.T.: 7.387 min
Delta R.T.: -0.006 min
Response: 5357079
Conc: 98.04 ng/ml



#44 AR-1268-4

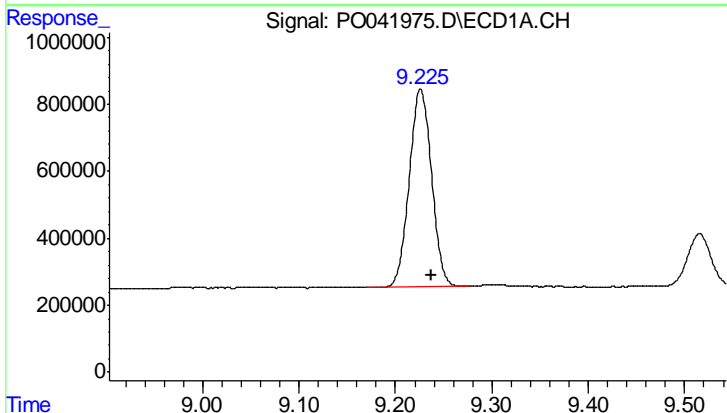
R.T.: 8.867 min
 Delta R.T.: -0.010 min
 Response: 507396
 Conc: 40.71 ng/ml

Instrument :
 ECD_O
 ClientSampleId :
 15K-7B



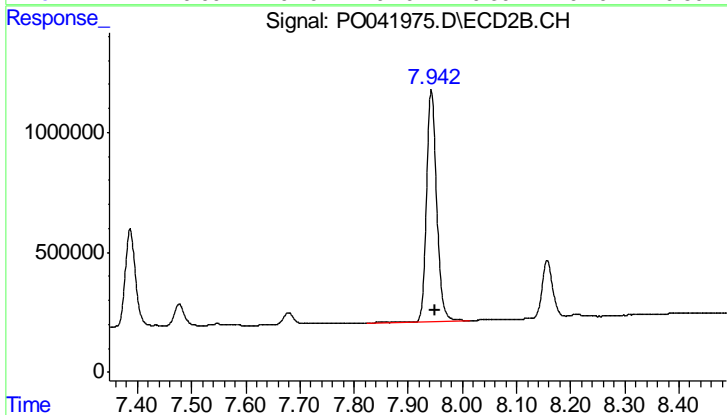
#44 AR-1268-4

R.T.: 7.679 min
 Delta R.T.: -0.007 min
 Response: 625059
 Conc: 28.14 ng/ml



#45 AR-1268-5

R.T.: 9.226 min
 Delta R.T.: -0.011 min
 Response: 9537025
 Conc: 118.06 ng/ml



#45 AR-1268-5

R.T.: 7.943 min
 Delta R.T.: -0.006 min
 Response: 12491493
 Conc: 86.77 ng/ml