

Data Path : P:\HPCHEM1\ECD_O\Data\PO020318\
 Data File : PO041997.D
 Signal(s) : Signal #1: ECD1A.CH Signal #2: ECD2B.CH
 Acq On : 31 Jan 2018 20:28
 Operator : SM/UA
 Sample : HEXANE
 Misc :
 ALS Vial : 1 Sample Multiplier: 1

Instrument :
 ECD_O
 ClientSampleId :
 HEXANE

Integration File signal 1: autoint1.e
 Integration File signal 2: autoint2.e
 Quant Time: Feb 01 00:33:33 2018
 Quant Method : P:\HPCHEM1\ECD_O\PO012318.M
 Quant Title : GC EXTRACTABLES
 QLast Update : Tue Jan 23 01:50:31 2018
 Response via : Initial Calibration
 Integrator: ChemStation 6890 Scale Mode: Small noise peaks clipped

Volume Inj. : 2 µl
 Signal #1 Phase : ZB-MR1 Signal #2 Phase: ZB-MR2
 Signal #1 Info : 30Mx0.32mmx 0.50µ Signal #2 Info : 30M x 0.32mm x 0.25µm

Compound	RT#1	RT#2	Resp#1	Resp#2	ng/ml	ng/ml

System Monitoring Compounds						
Target Compounds						
6) L1 AR-1016-4	0.000	4.854	0	1635883	N.D.	175.553 #
7) L1 AR-1016-5	0.000	4.914	0	896625	N.D.	90.435 #
8) L2 AR-1221-1	0.000	3.515	0	582005	N.D.	226.503 #
12) L3 AR-1232-2	5.185	0.000	453087	0	172.165	N.D. #
20) L4 AR-1242-5	0.000	4.854	0	1635883	N.D.	282.922 #
21) L5 AR-1248-1	0.000	4.854	0	1635883	N.D.	149.642 #
22) L5 AR-1248-2	0.000	4.914	0	896625	N.D.	92.211 #
23) L5 AR-1248-3	6.097	5.183	1720386	2594657	188.135	152.983
24) L5 AR-1248-4	6.097	5.183	1720386	2594657	191.981	192.162
25) L5 AR-1248-5	0.000	5.668	0	5834474	N.D.	757.186 #
26) L6 AR-1254-1	0.000	5.183	0	2594657	N.D.	140.283 #
28) L6 AR-1254-3	6.640	5.668	564174	5834474	36.400	212.070 #
32) L7 AR-1260-2	0.000	5.996	0	1962234	N.D.	62.122 #
33) L7 AR-1260-3	0.000	6.148	0	603883	N.D.	23.137 #
35) L7 AR-1260-5	8.013	0.000	3876825	0	147.393	N.D. #
36) L8 AR-1262-1	0.000	5.996	0	1962234	N.D.	88.347 #
37) L8 AR-1262-2	0.000	6.148	0	603883	N.D.	30.028 #
41) L9 AR-1268-1	0.000	7.149	0	314430	N.D.	4.290 #
42) L9 AR-1268-2	0.000	7.149	0	314430	N.D.	4.863 #

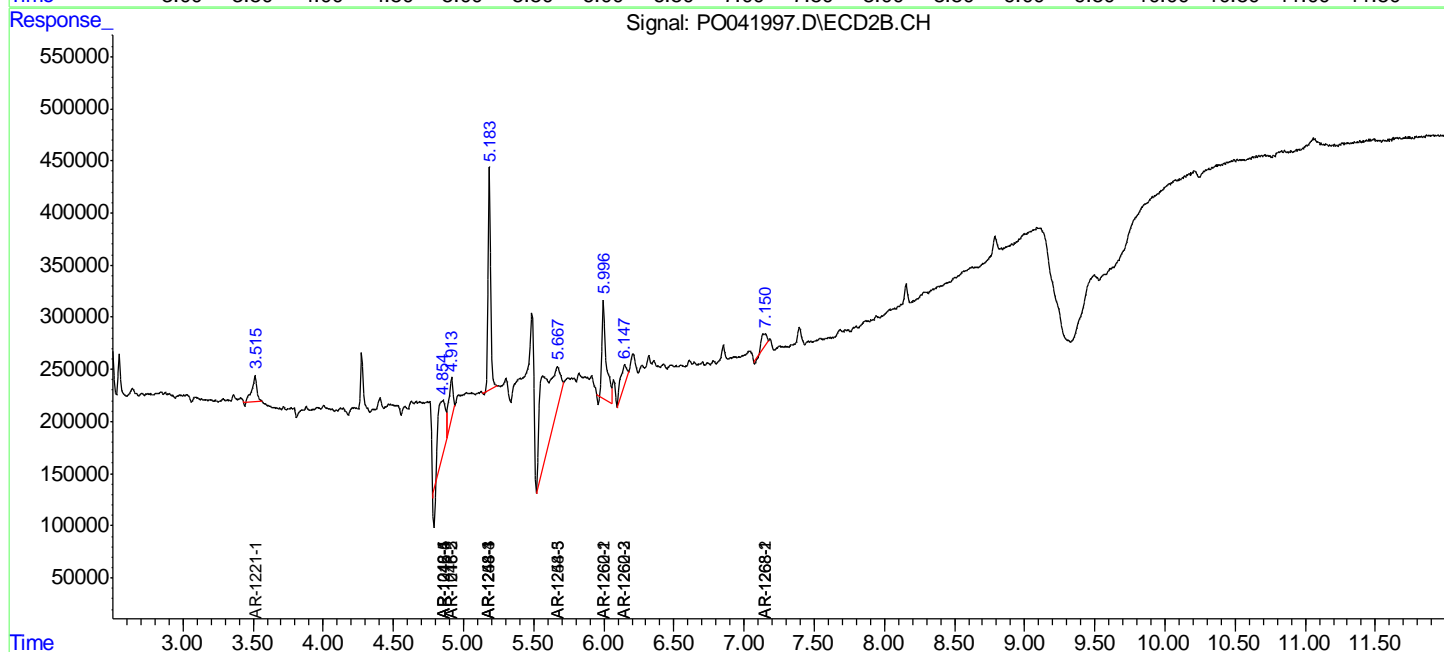
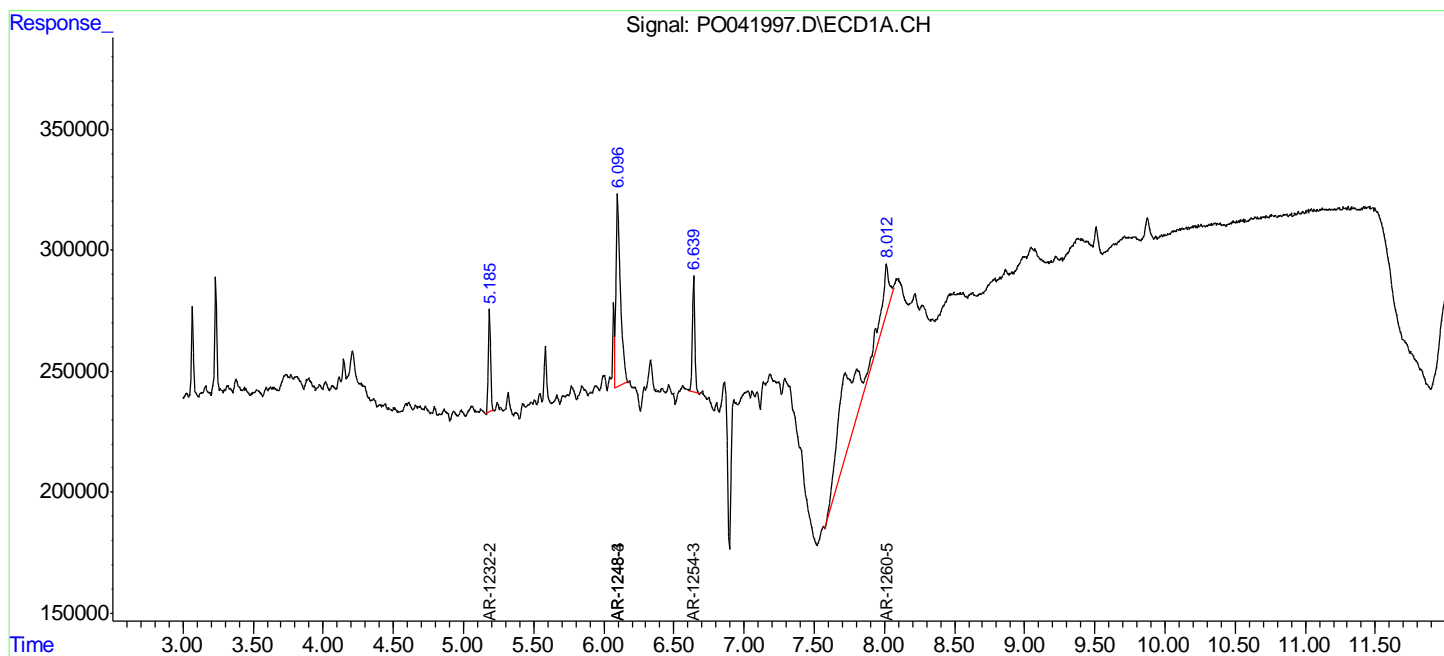
(f)=RT Delta > 1/2 Window (#)=Amounts differ by > 25% (m)=manual int.

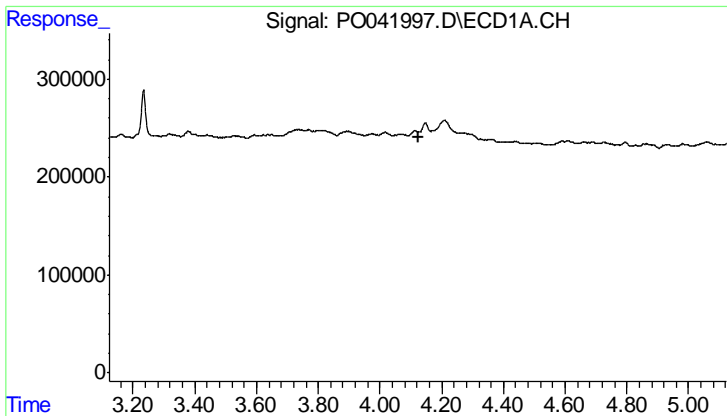
Data Path : P:\HPCHEM1\ECD_O\Data\PO020318\
 Data File : PO041997.D
 Signal(s) : Signal #1: ECD1A.CH Signal #2: ECD2B.CH
 Acq On : 31 Jan 2018 20:28
 Operator : SM/UA
 Sample : HEXANE
 Misc :
 ALS Vial : 1 Sample Multiplier: 1

Instrument :
 ECD_O
 ClientSampled :
 HEXANE

Integration File signal 1: autoint1.e
 Integration File signal 2: autoint2.e
 Quant Time: Feb 01 00:33:33 2018
 Quant Method : P:\HPCHEM1\ECD_O\PO012318.M
 Quant Title : GC EXTRACTABLES
 QLast Update : Tue Jan 23 01:50:31 2018
 Response via : Initial Calibration
 Integrator: ChemStation 6890 Scale Mode: Small noise peaks clipped

Volume Inj. : 2 µl
 Signal #1 Phase : ZB-MR1 Signal #2 Phase: ZB-MR2
 Signal #1 Info : 30Mx0.32mmx 0.50µ Signal #2 Info : 30M x 0.32mm x 0.25µm

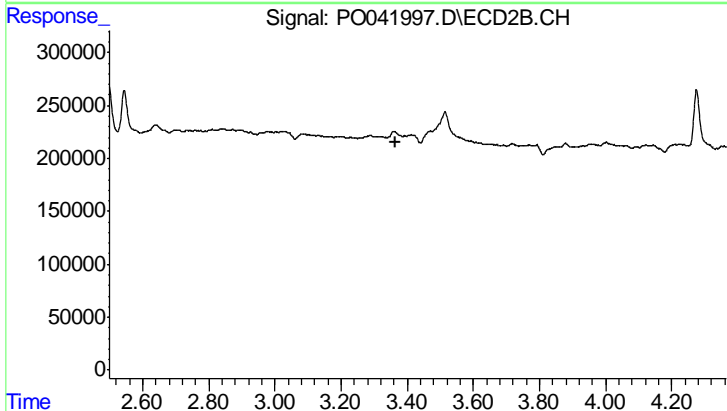




#1 Tetrachloro-m-xylene

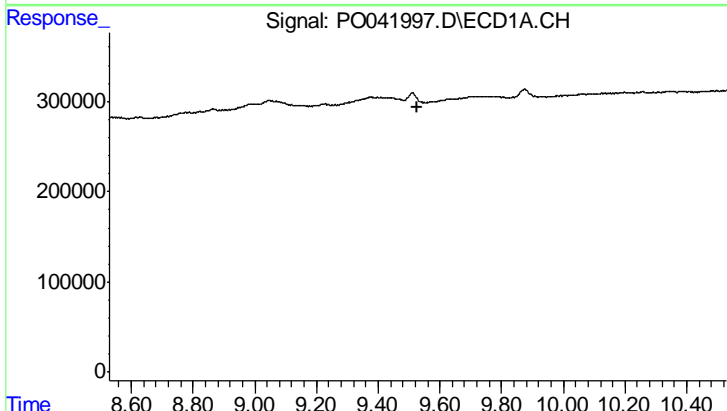
R.T.: 0.000 min
 Exp R.T.: 4.123 min
 Response: 0
 Conc: N.D.

Instrument :
 ECD_O
 ClientSampleId :
 HEXANE



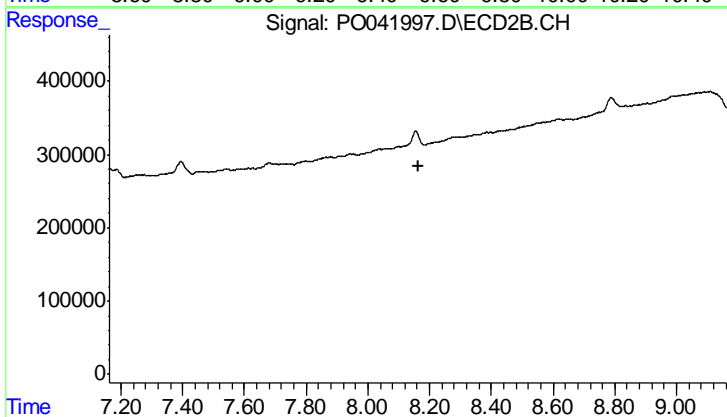
#1 Tetrachloro-m-xylene

R.T.: 0.000 min
 Exp R.T.: 3.366 min
 Response: 0
 Conc: N.D.



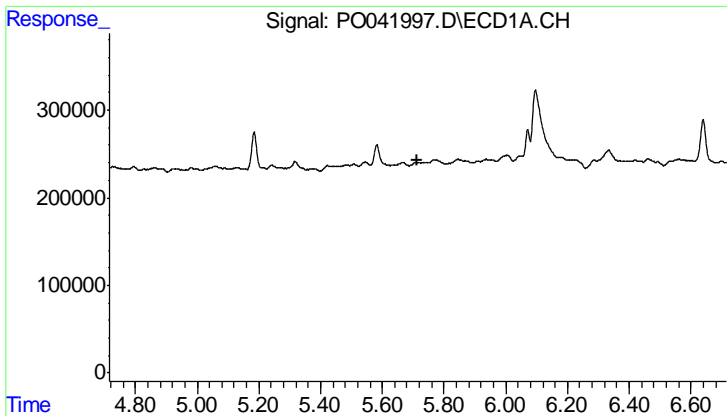
#2 Decachlorobiphenyl

R.T.: 0.000 min
 Exp R.T.: 9.529 min
 Response: 0
 Conc: N.D.



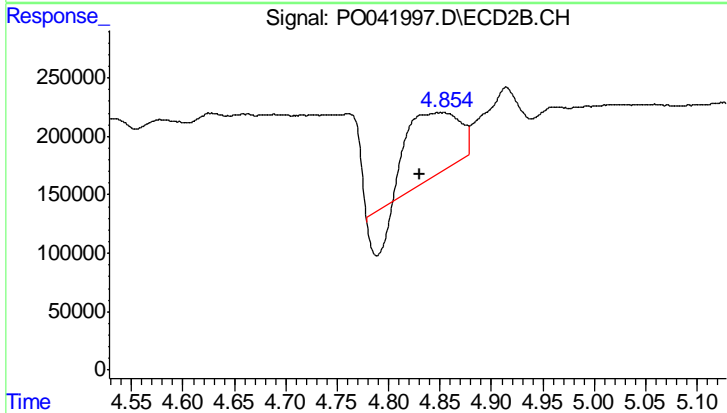
#2 Decachlorobiphenyl

R.T.: 0.000 min
 Exp R.T.: 8.162 min
 Response: 0
 Conc: N.D.

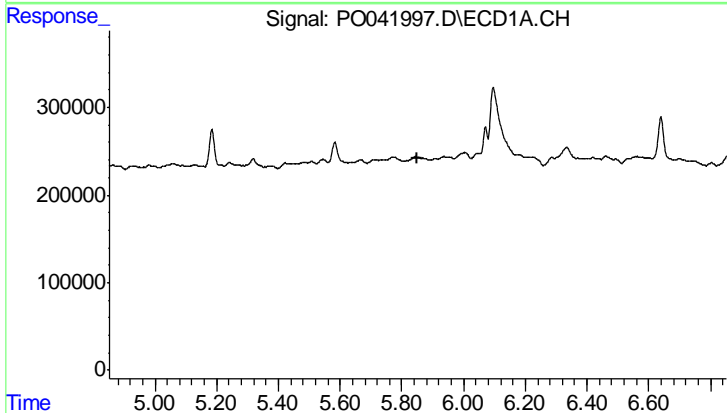


#6 AR-1016-4
 R.T.: 0.000 min
 Exp R.T.: 5.715 min
 Response: 0
 Conc: N.D.

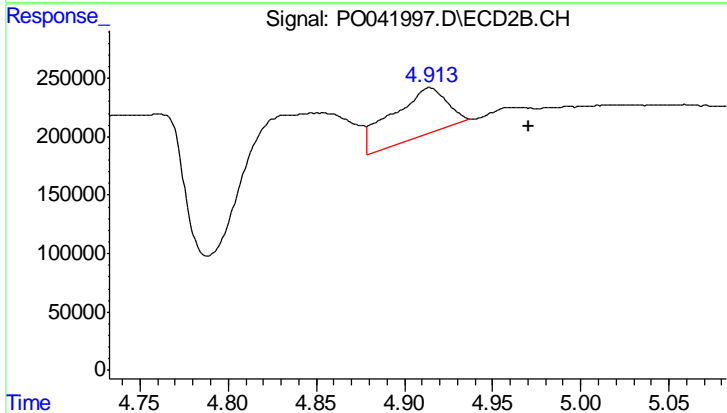
Instrument :
 ECD_O
 ClientSampled :
 HEXANE



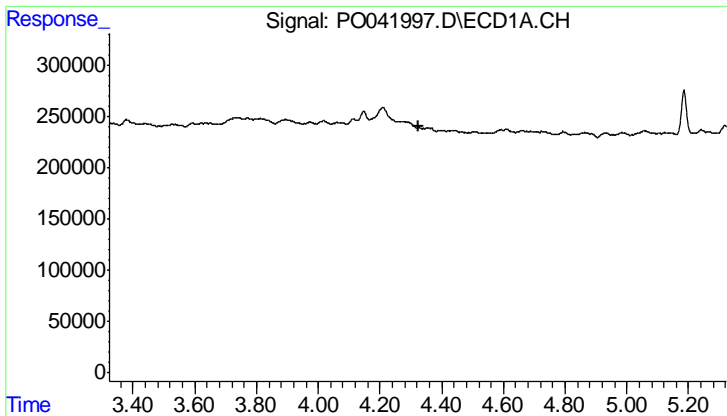
#6 AR-1016-4
 R.T.: 4.854 min
 Delta R.T.: 0.025 min
 Response: 1635883
 Conc: 175.55 ng/ml



#7 AR-1016-5
 R.T.: 0.000 min
 Exp R.T.: 5.852 min
 Response: 0
 Conc: N.D.



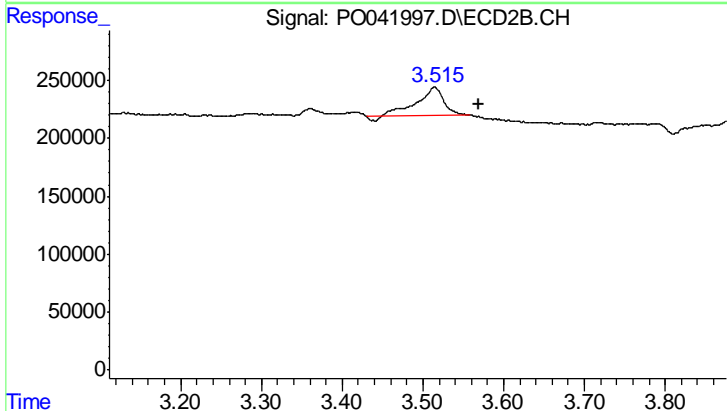
#7 AR-1016-5
 R.T.: 4.914 min
 Delta R.T.: -0.057 min
 Response: 896625
 Conc: 90.44 ng/ml



#8 AR-1221-1

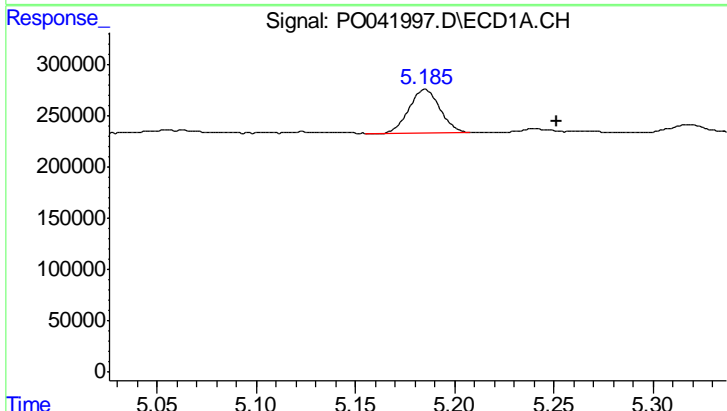
R.T.: 0.000 min
 Exp R.T.: 4.323 min
 Response: 0
 Conc: N.D.

Instrument :
 ECD_O
 ClientSampleId :
 HEXANE



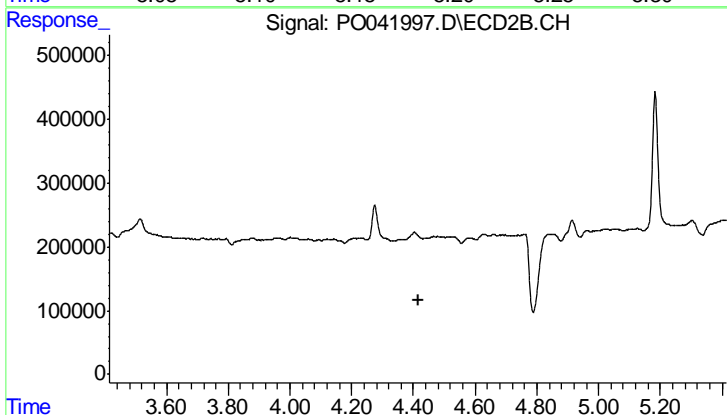
#8 AR-1221-1

R.T.: 3.515 min
 Delta R.T.: -0.054 min
 Response: 582005
 Conc: 226.50 ng/ml



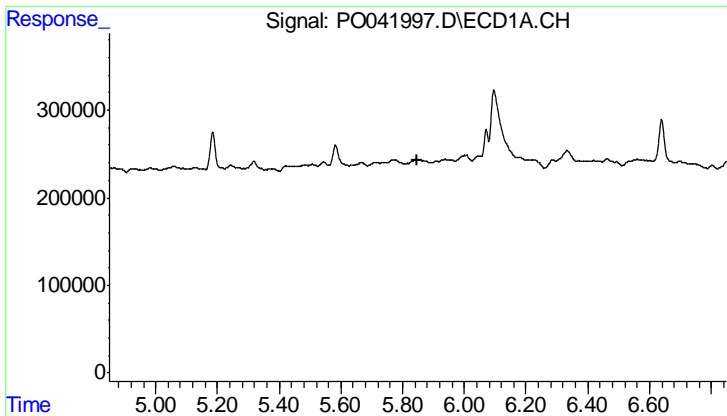
#12 AR-1232-2

R.T.: 5.185 min
 Delta R.T.: -0.066 min
 Response: 453087
 Conc: 172.16 ng/ml



#12 AR-1232-2

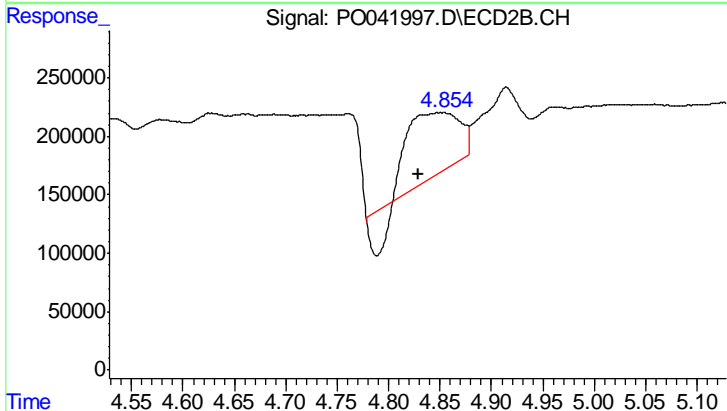
R.T.: 0.000 min
 Exp R.T.: 4.415 min
 Response: 0
 Conc: N.D.



#20 AR-1242-5

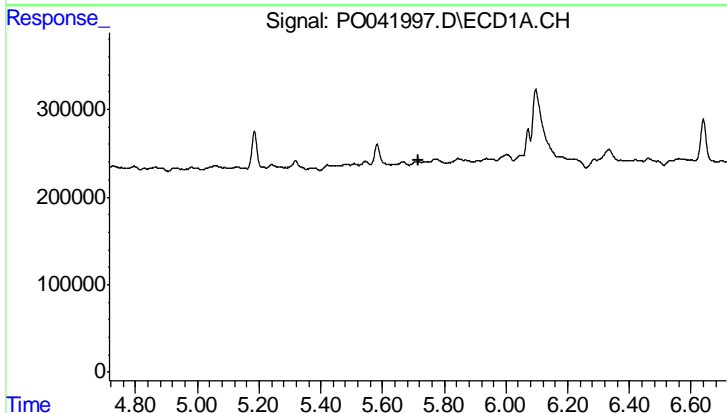
R.T.: 0.000 min
 Exp R.T.: 5.850 min
 Response: 0
 Conc: N.D.

Instrument :
 ECD_O
 ClientSampleId :
 HEXANE



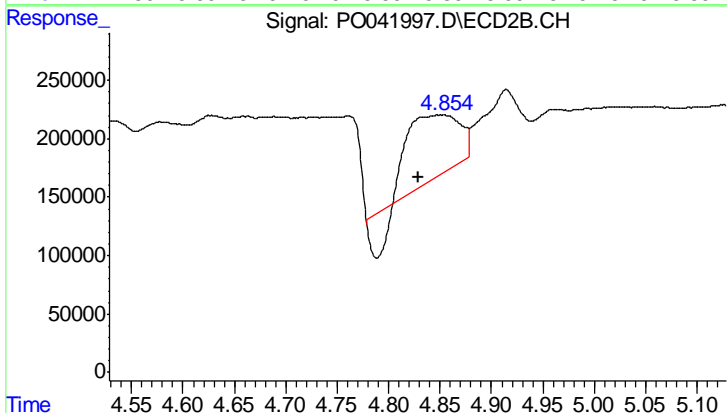
#20 AR-1242-5

R.T.: 4.854 min
 Delta R.T.: 0.026 min
 Response: 1635883
 Conc: 282.92 ng/ml



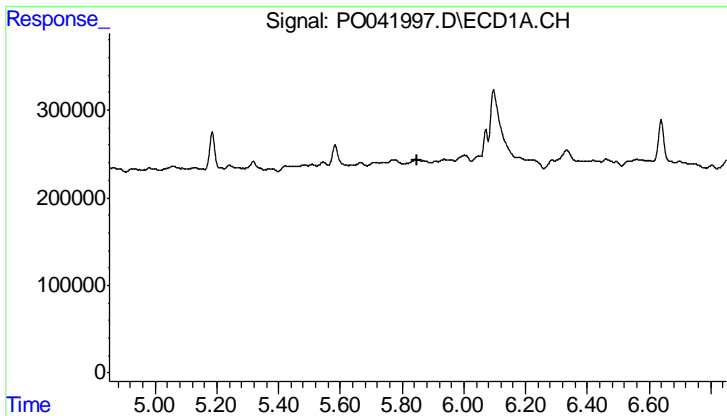
#21 AR-1248-1

R.T.: 0.000 min
 Exp R.T.: 5.715 min
 Response: 0
 Conc: N.D.



#21 AR-1248-1

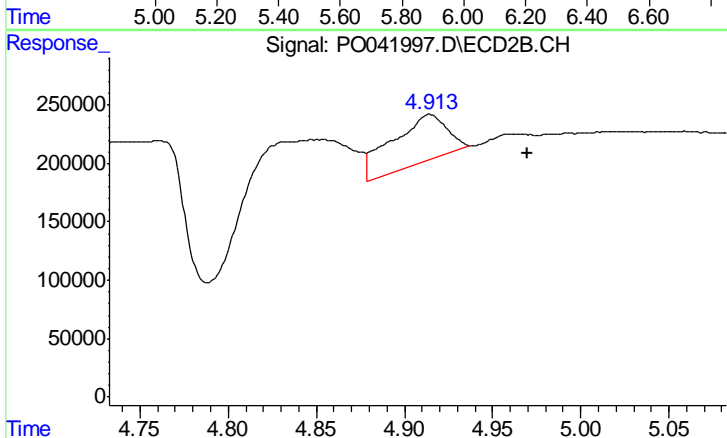
R.T.: 4.854 min
 Delta R.T.: 0.025 min
 Response: 1635883
 Conc: 149.64 ng/ml



#22 AR-1248-2

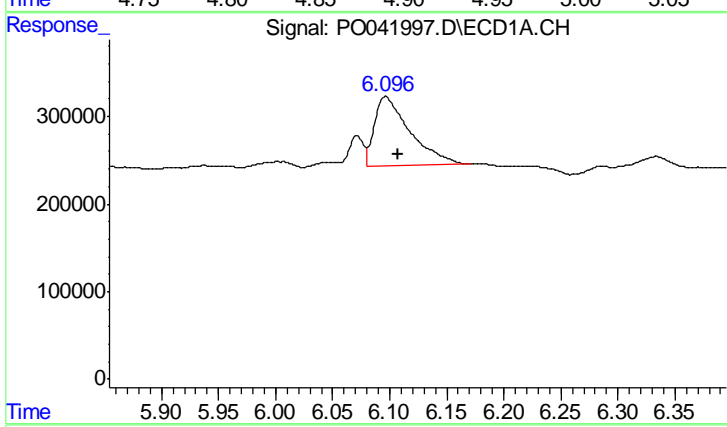
R.T.: 0.000 min
 Exp R.T.: 5.851 min
 Response: 0
 Conc: N.D.

Instrument :
 ECD_O
 ClientSampleId :
 HEXANE



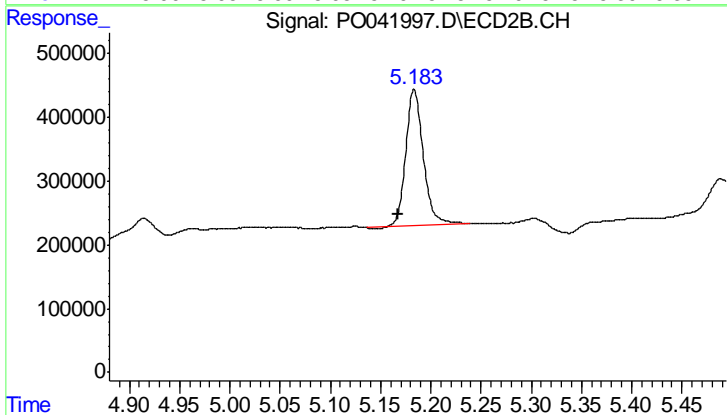
#22 AR-1248-2

R.T.: 4.914 min
 Delta R.T.: -0.056 min
 Response: 896625
 Conc: 92.21 ng/ml



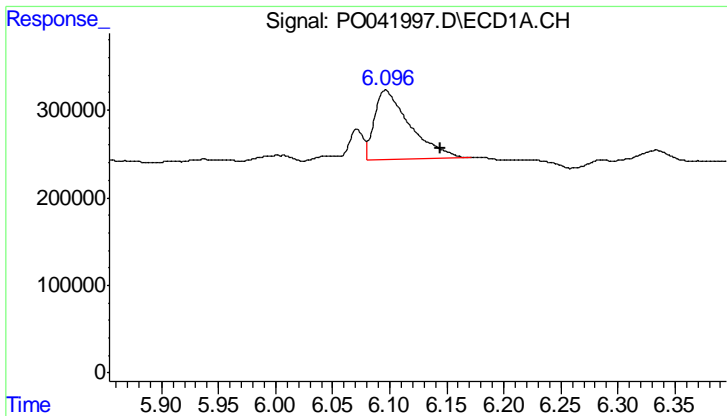
#23 AR-1248-3

R.T.: 6.097 min
 Delta R.T.: -0.011 min
 Response: 1720386
 Conc: 188.13 ng/ml



#23 AR-1248-3

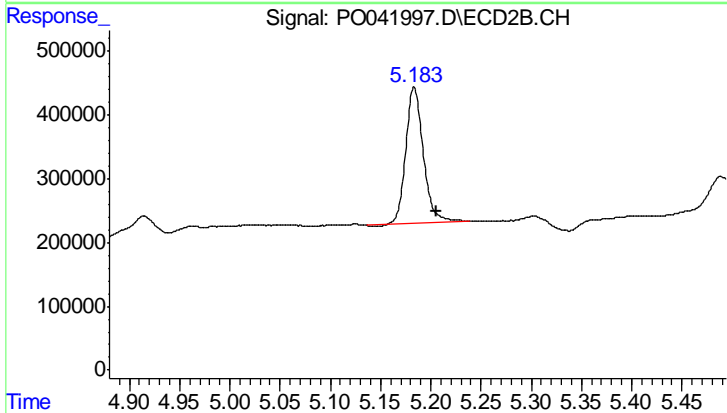
R.T.: 5.183 min
 Delta R.T.: 0.016 min
 Response: 2594657
 Conc: 152.98 ng/ml



#24 AR-1248-4

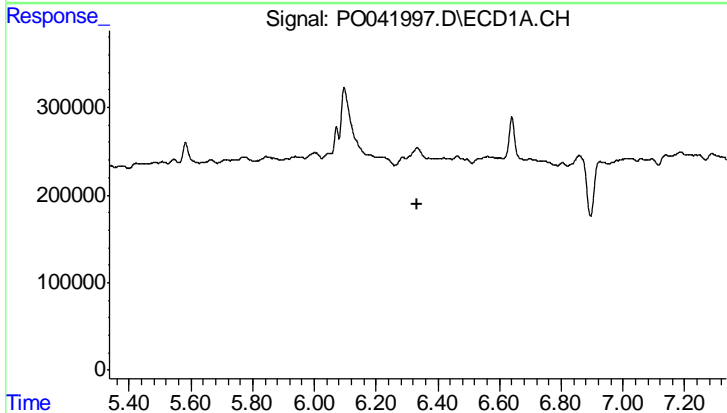
R.T.: 6.097 min
 Delta R.T.: -0.048 min
 Response: 1720386
 Conc: 191.98 ng/ml

Instrument :
 ECD_O
 ClientSampleId :
 HEXANE



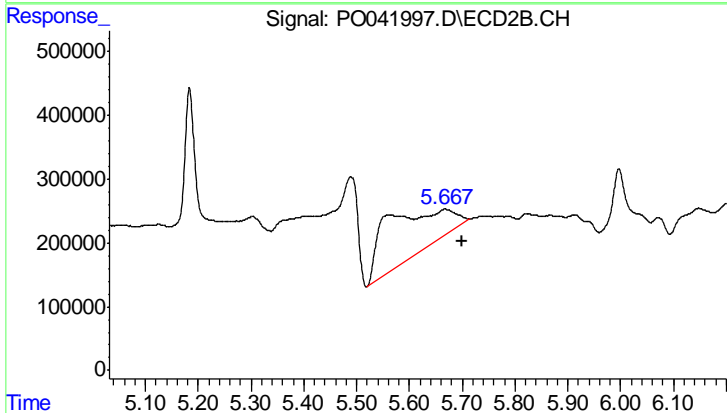
#24 AR-1248-4

R.T.: 5.183 min
 Delta R.T.: -0.023 min
 Response: 2594657
 Conc: 192.16 ng/ml



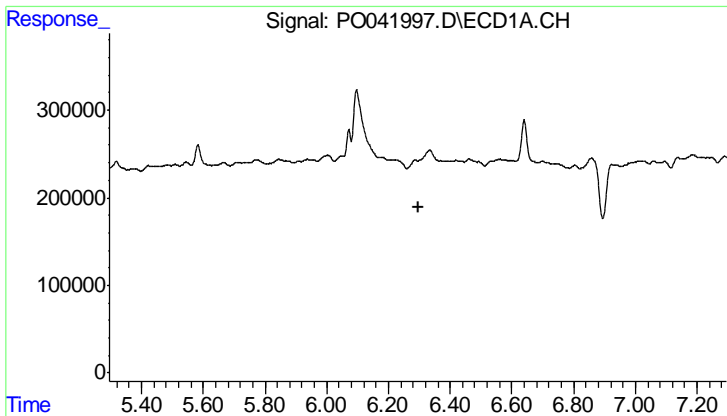
#25 AR-1248-5

R.T.: 0.000 min
 Exp R.T. : 6.335 min
 Response: 0
 Conc: N.D.



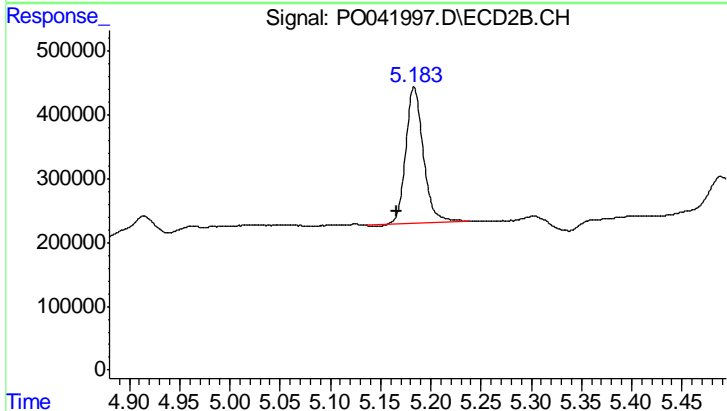
#25 AR-1248-5

R.T.: 5.668 min
 Delta R.T.: -0.032 min
 Response: 5834474
 Conc: 757.19 ng/ml

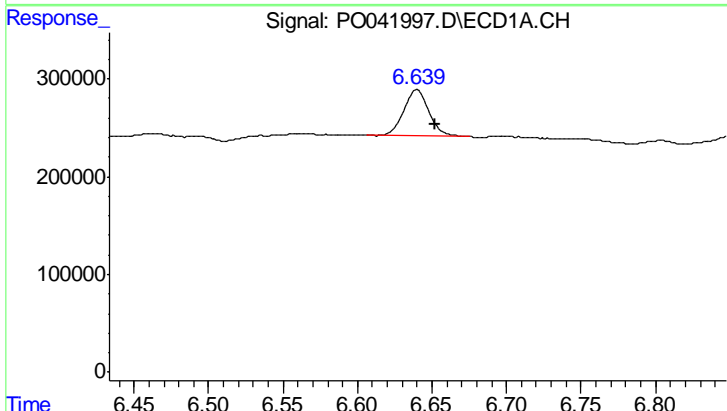


#26 AR-1254-1
 R.T.: 0.000 min
 Exp R.T.: 6.296 min
 Response: 0
 Conc: N.D.

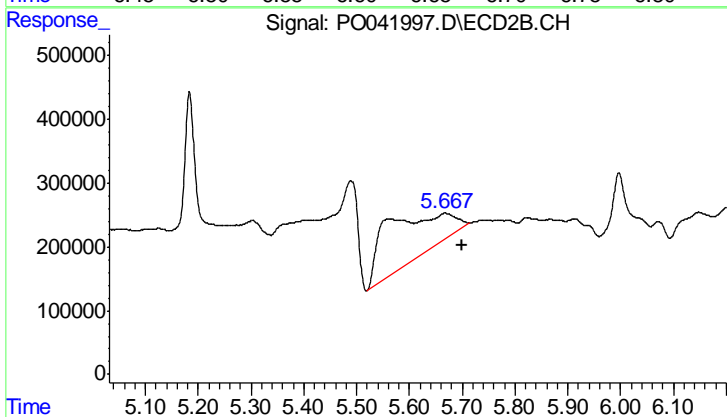
Instrument :
 ECD_O
 ClientSampleId :
 HEXANE



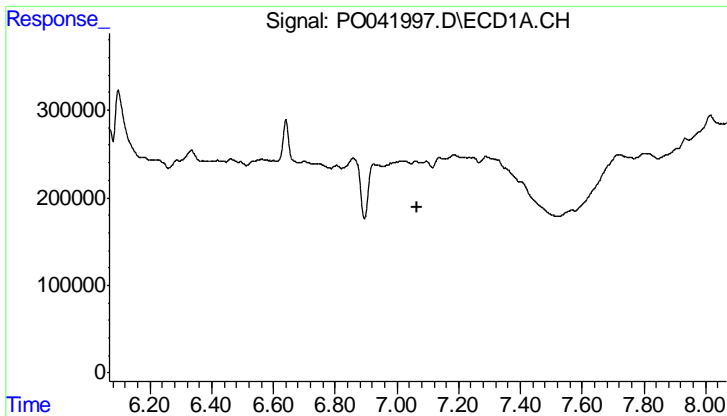
#26 AR-1254-1
 R.T.: 5.183 min
 Delta R.T.: 0.017 min
 Response: 2594657
 Conc: 140.28 ng/ml



#28 AR-1254-3
 R.T.: 6.640 min
 Delta R.T.: -0.013 min
 Response: 564174
 Conc: 36.40 ng/ml

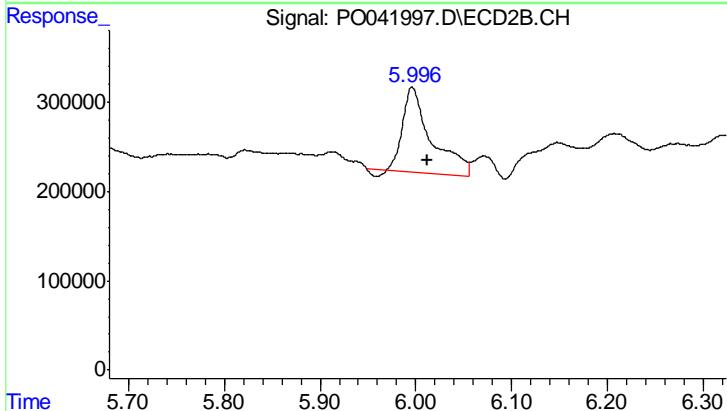


#28 AR-1254-3
 R.T.: 5.668 min
 Delta R.T.: -0.032 min
 Response: 5834474
 Conc: 212.07 ng/ml

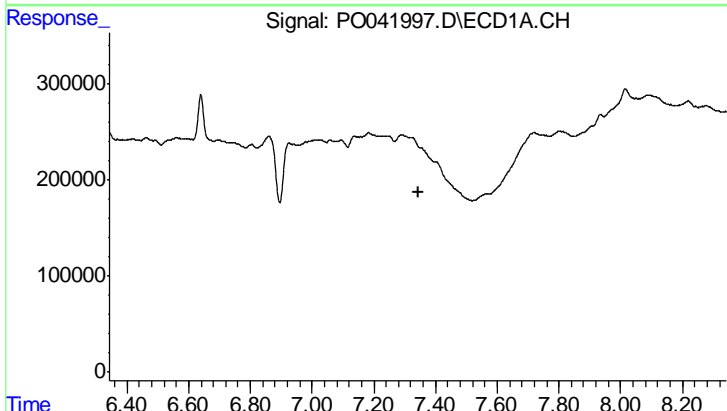


#32 AR-1260-2
 R.T.: 0.000 min
 Exp R.T.: 7.068 min
 Response: 0
 Conc: N.D.

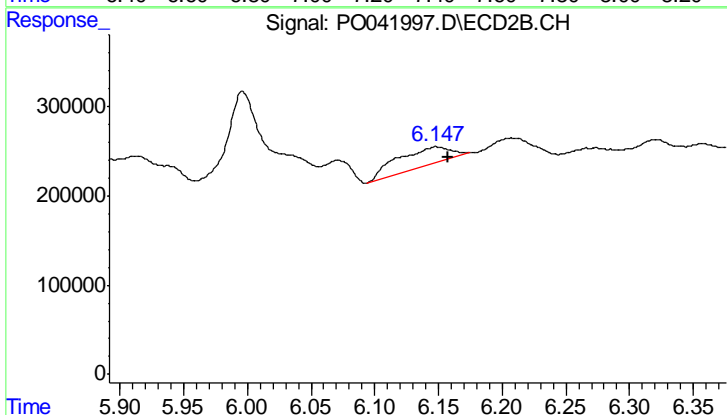
Instrument :
 ECD_O
 ClientSampleId :
 HEXANE



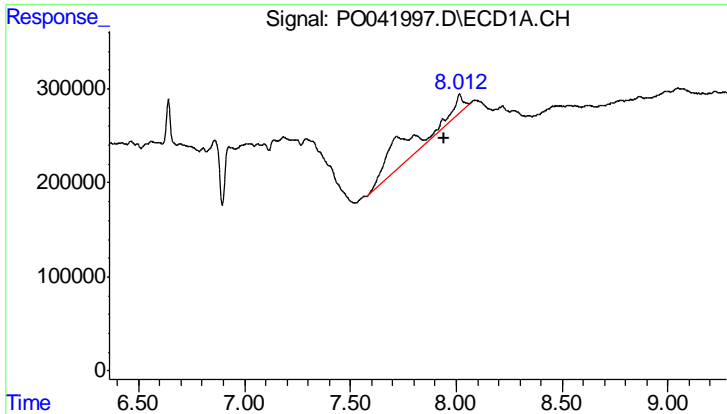
#32 AR-1260-2
 R.T.: 5.996 min
 Delta R.T.: -0.016 min
 Response: 1962234
 Conc: 62.12 ng/ml



#33 AR-1260-3
 R.T.: 0.000 min
 Exp R.T.: 7.343 min
 Response: 0
 Conc: N.D.



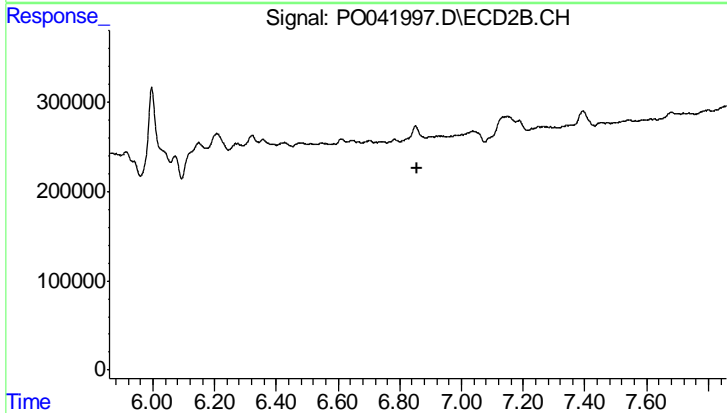
#33 AR-1260-3
 R.T.: 6.148 min
 Delta R.T.: -0.009 min
 Response: 603883
 Conc: 23.14 ng/ml



#35 AR-1260-5

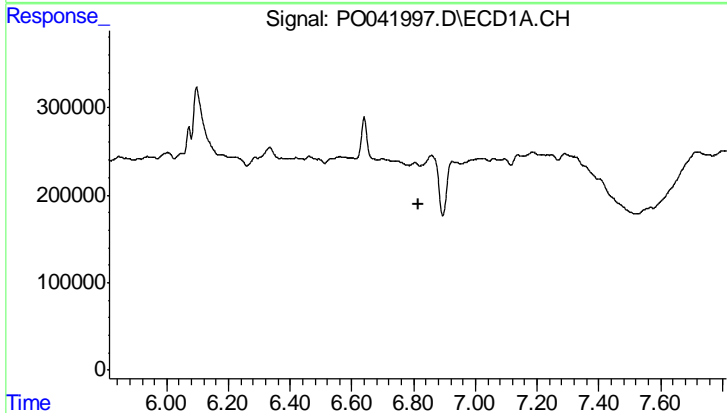
R.T.: 8.013 min
 Delta R.T.: 0.070 min
 Response: 3876825
 Conc: 147.39 ng/ml

Instrument :
 ECD_O
 ClientSampleId :
 HEXANE



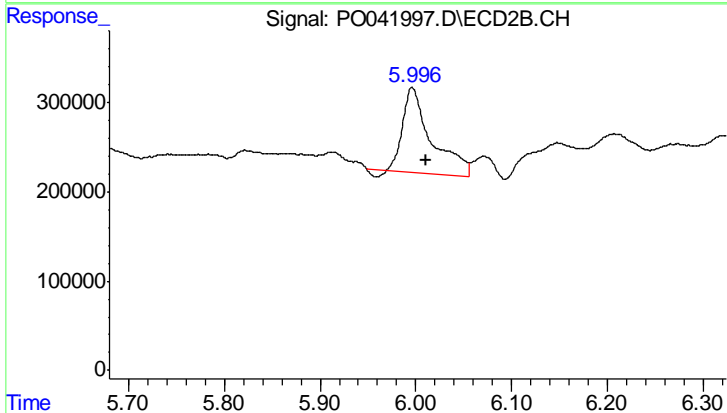
#35 AR-1260-5

R.T.: 0.000 min
 Exp R.T. : 6.859 min
 Response: 0
 Conc: N.D.



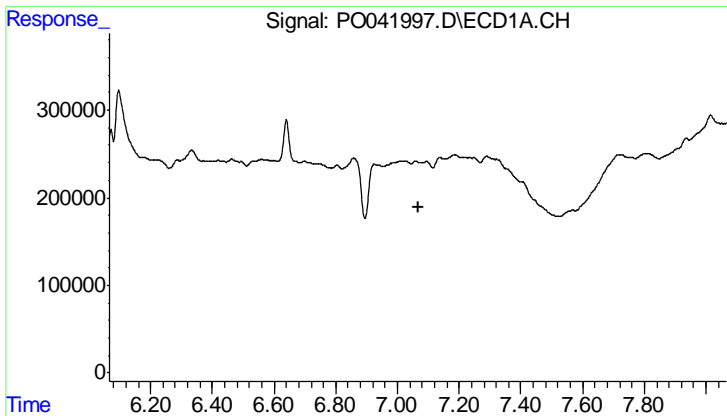
#36 AR-1262-1

R.T.: 0.000 min
 Exp R.T. : 6.814 min
 Response: 0
 Conc: N.D.



#36 AR-1262-1

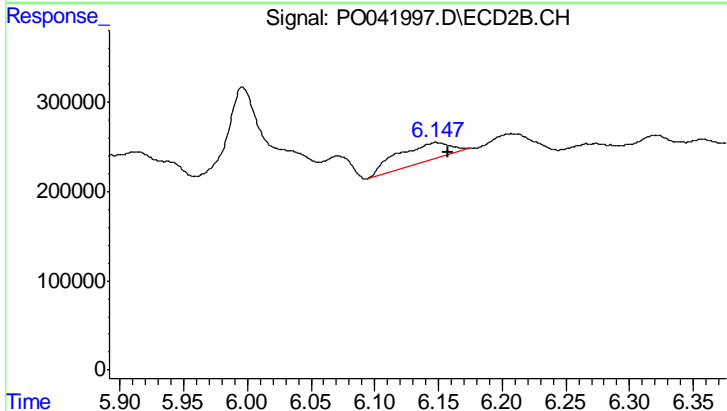
R.T.: 5.996 min
 Delta R.T.: -0.015 min
 Response: 1962234
 Conc: 88.35 ng/ml



#37 AR-1262-2

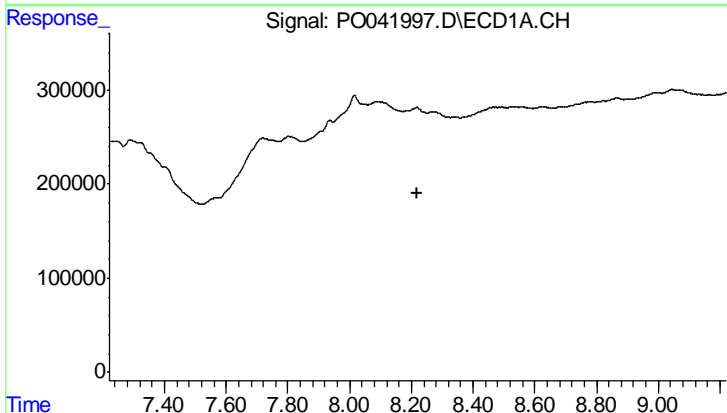
R.T.: 0.000 min
 Exp R.T.: 7.067 min
 Response: 0
 Conc: N.D.

Instrument :
 ECD_O
 ClientSampled :
 HEXANE



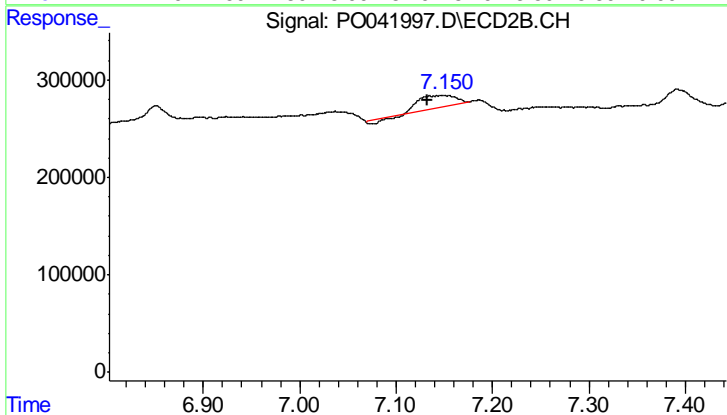
#37 AR-1262-2

R.T.: 6.148 min
 Delta R.T.: -0.009 min
 Response: 603883
 Conc: 30.03 ng/ml



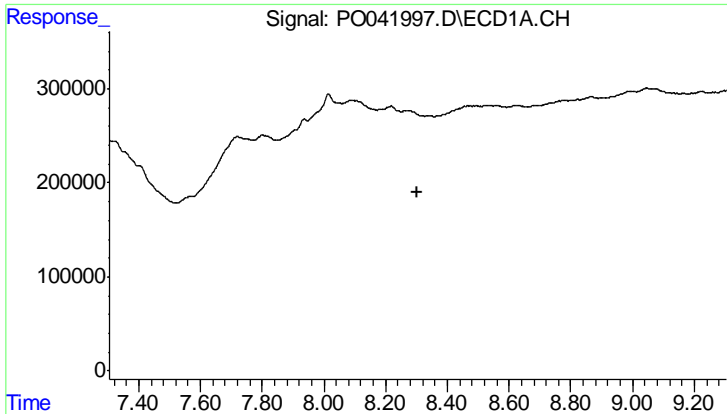
#41 AR-1268-1

R.T.: 0.000 min
 Exp R.T.: 8.221 min
 Response: 0
 Conc: N.D.



#41 AR-1268-1

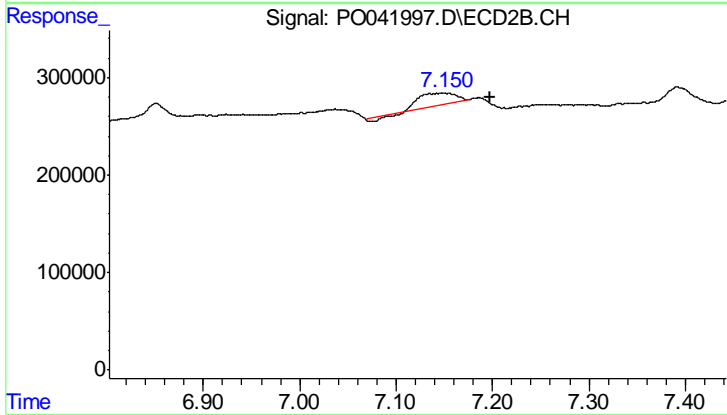
R.T.: 7.149 min
 Delta R.T.: 0.017 min
 Response: 314430
 Conc: 4.29 ng/ml



#42 AR-1268-2

R.T.: 0.000 min
 Exp R.T.: 8.305 min
 Response: 0
 Conc: N.D.

Instrument :
 ECD_O
 ClientSampleId :
 HEXANE



#42 AR-1268-2

R.T.: 7.149 min
 Delta R.T.: -0.049 min
 Response: 314430
 Conc: 4.86 ng/ml