

Data Path : P:\HPCHEM1\ECD O\Data\PO020418\
 Data File : PO042034.D
 Signal(s) : Signal #1: ECD1A.CH Signal #2: ECD2B.CH
 Acq On : 01 Feb 2018 15:35
 Operator : SM/UA
 Sample : AR1660CCC500
 Misc :
 ALS Vial : 3 Sample Multiplier: 1

Instrument :
 ECD_O
ClientSampleId :
 AR1660CCC500

Manual Integrations
APPROVED
 ugo
 2/4/2018 10:19:28 AM

Integration File signal 1: autoint1.e
 Integration File signal 2: autoint2.e
 Quant Time: Feb 01 16:32:30 2018
 Quant Method : P:\HPCHEM1\ECD_O\PO012318.M
 Quant Title : GC EXTRACTABLES
 QLast Update : Tue Jan 23 01:50:31 2018
 Response via : Initial Calibration
 Integrator: ChemStation 6890 Scale Mode: Small noise peaks clipped

Volume Inj. : 2 µl
 Signal #1 Phase : ZB-MR1 Signal #2 Phase: ZB-MR2
 Signal #1 Info : 30Mx0.32mmx 0.50µ Signal #2 Info : 30M x 0.32mm x 0.25µm

Compound	RT#1	RT#2	Resp#1	Resp#2	nq/ml	nq/ml

System Monitoring Compounds						
1) SA Tetrachlo...	4.115	3.363	11491963	17136448	59.541	59.032m
2) SA Decachlor...	9.517	8.159	11699807	16215628	49.796	45.343
Target Compounds						
3) L1 AR-1016-1	4.983	4.184	2731852	4812949	527.636	640.396m
4) L1 AR-1016-2	5.324	4.623	3844002	4216641	535.941	600.455
5) L1 AR-1016-3	5.419	4.661	3159001	5350322	530.100	631.855
6) L1 AR-1016-4	5.706	4.826	3122396	5618289	515.923	602.921m
7) L1 AR-1016-5	5.843	4.967	3428832	5167499	530.815	521.203m
31) L7 AR-1260-1	6.808	5.821	6878947	12961296	546.831	607.182
32) L7 AR-1260-2	7.059	6.008	9136419	17930406	525.100	567.657
33) L7 AR-1260-3	7.336	6.154	10284223	14948923	512.375	572.752
34) L7 AR-1260-4	7.414	6.325	7526927	17835689	639.931	523.082
35) L7 AR-1260-5	7.935	6.856	17146400	33805913	651.890	630.072

(f)=RT Delta > 1/2 Window (#)=Amounts differ by > 25% (m)=manual int.

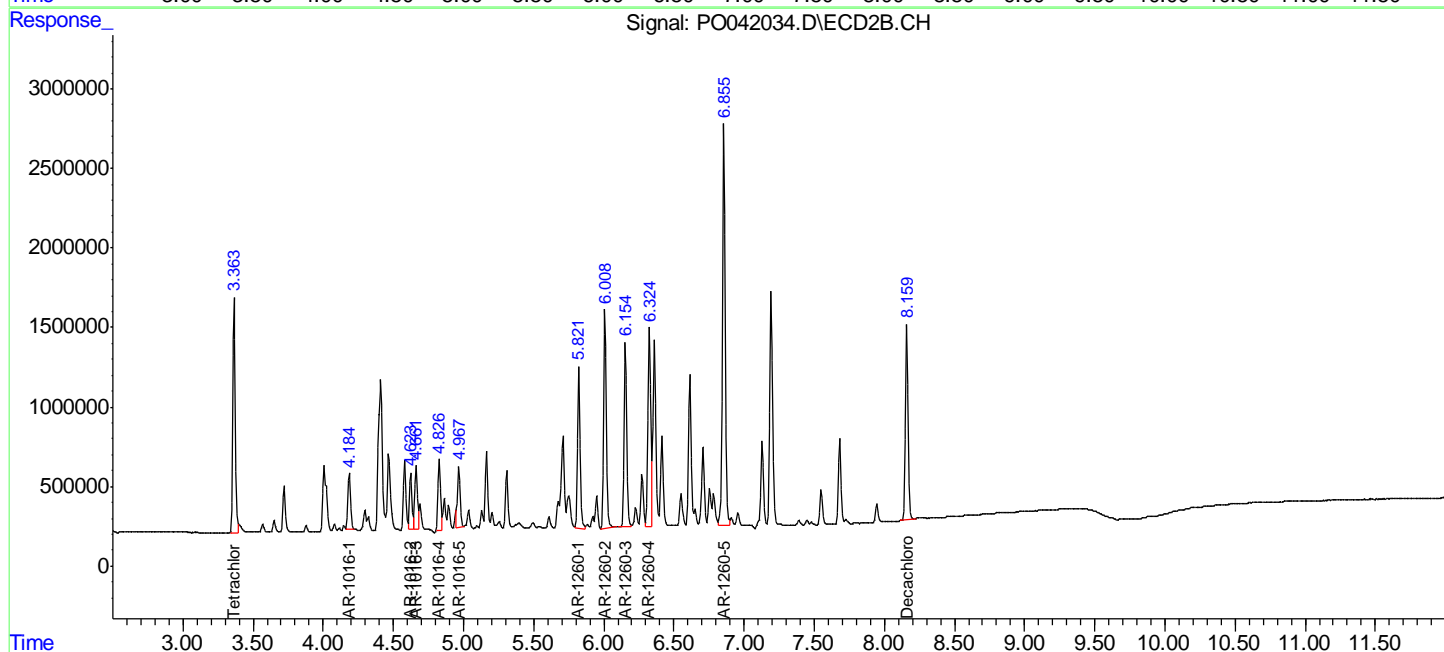
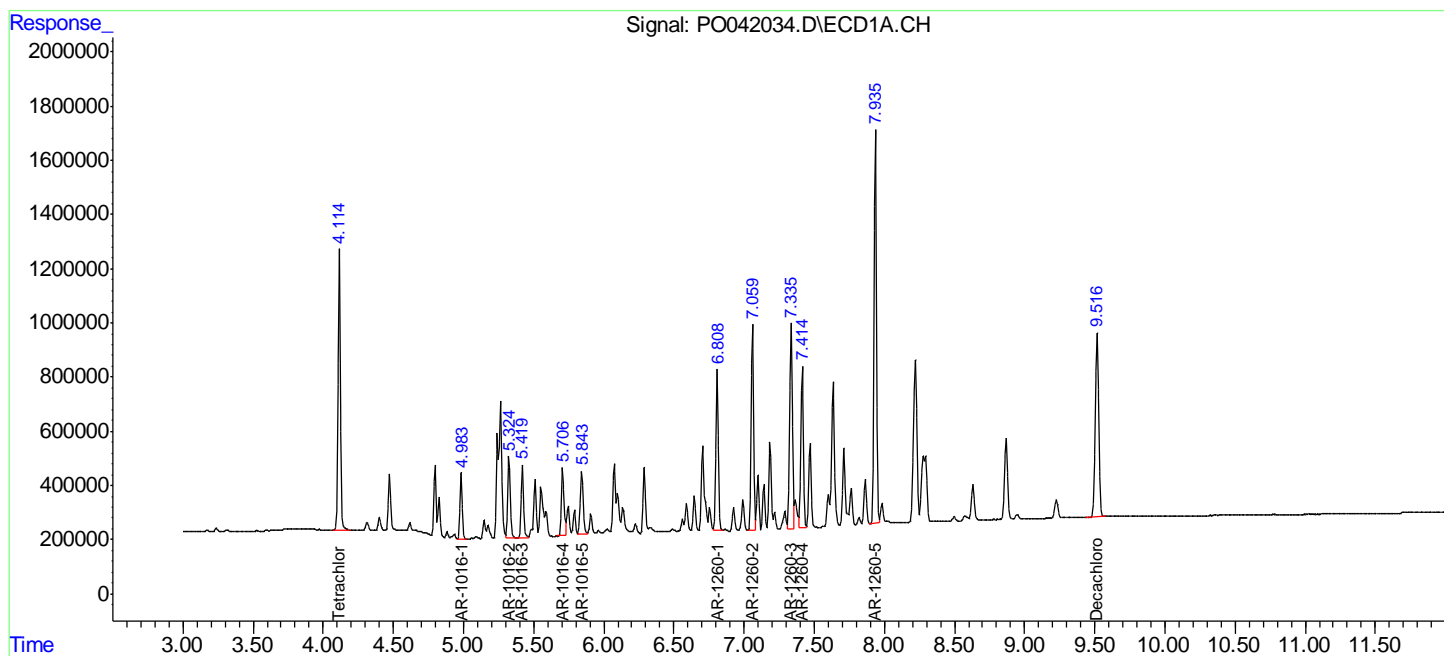
Data Path : P:\HPCHEM1\ECD O\Data\PO020418\
 Data File : PO042034.D
 Signal(s) : Signal #1: ECD1A.CH Signal #2: ECD2B.CH
 Acq On : 01 Feb 2018 15:35
 Operator : SM/UA
 Sample : AR1660CCC500
 Misc :
 ALS Vial : 3 Sample Multiplier: 1

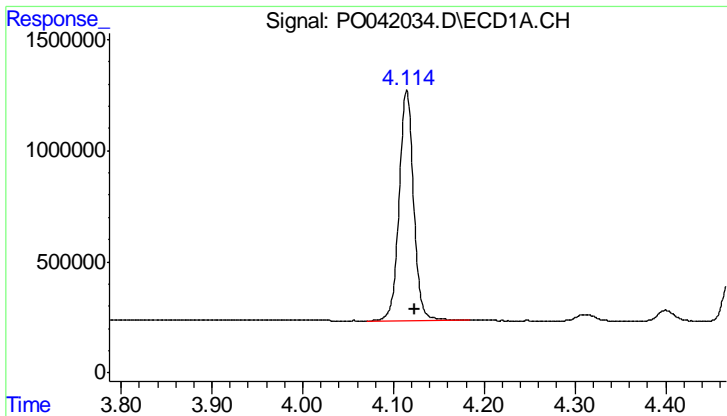
Instrument :
 ECD_O
 Client Sampled :
 AR1660CCC500

Manual Integrations
APPROVED
 ugo
 2/4/2018 10:19:28 AM

Integration File signal 1: autoint1.e
 Integration File signal 2: autoint2.e
 Quant Time: Feb 01 16:32:30 2018
 Quant Method : P:\HPCHEM1\ECD_O\PO012318.M
 Quant Title : GC EXTRACTABLES
 QLast Update : Tue Jan 23 01:50:31 2018
 Response via : Initial Calibration
 Integrator: ChemStation 6890 Scale Mode: Small noise peaks clipped

Volume Inj. : 2 µl
 Signal #1 Phase : ZB-MR1 Signal #2 Phase: ZB-MR2
 Signal #1 Info : 30Mx0.32mmx 0.50µ Signal #2 Info : 30M x 0.32mm x 0.25µm



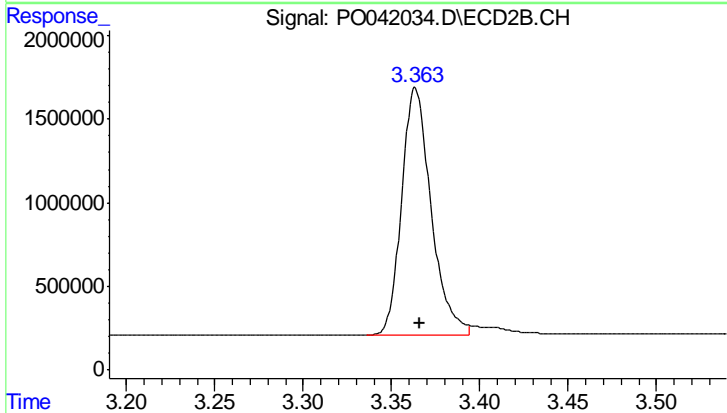


#1 Tetrachloro-m-xylene

R.T.: 4.115 min
 Delta R.T.: -0.009 min
 Response: 11491963
 Conc: 59.54 ng/ml

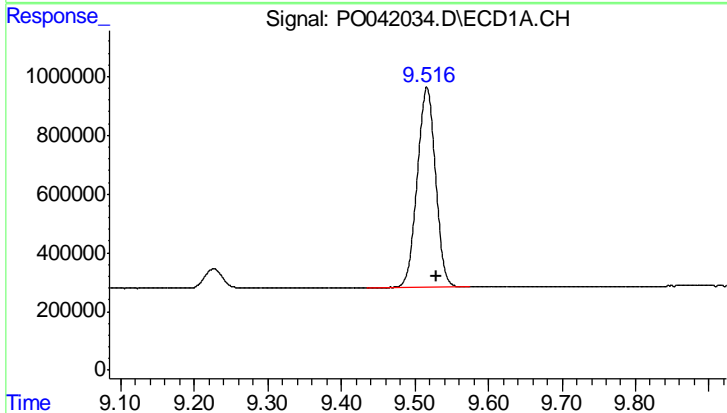
Instrument :
 ECD_O
 ClientSampleId :
 AR1660CCC500

Manual Integrations
 APPROVED
 ugo
 2/4/2018 10:19:28 AM



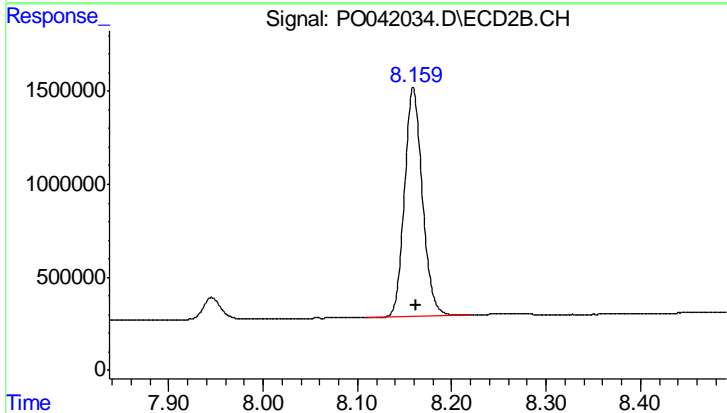
#1 Tetrachloro-m-xylene

R.T.: 3.363 min
 Delta R.T.: -0.003 min
 Response: 17136448
 Conc: 59.03 ng/ml m



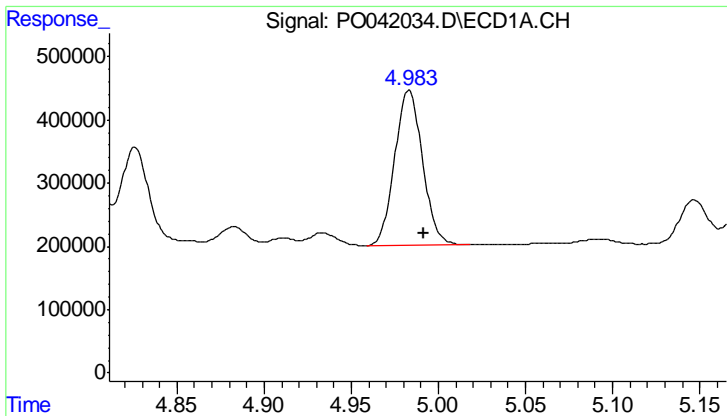
#2 Decachlorobiphenyl

R.T.: 9.517 min
 Delta R.T.: -0.012 min
 Response: 11699807
 Conc: 49.80 ng/ml



#2 Decachlorobiphenyl

R.T.: 8.159 min
 Delta R.T.: -0.003 min
 Response: 16215628
 Conc: 45.34 ng/ml



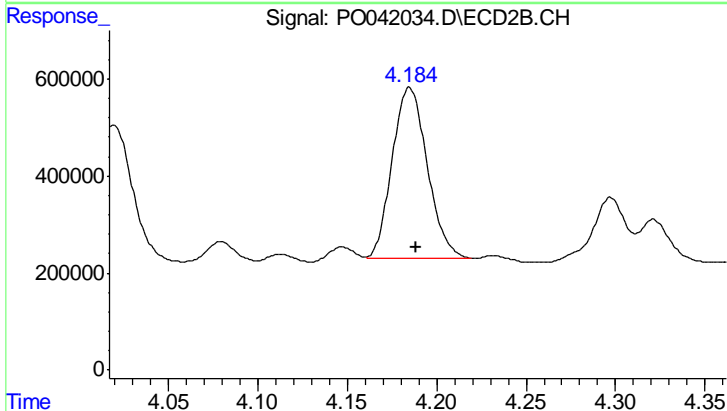
#3 AR-1016-1

R.T.: 4.983 min
 Delta R.T.: -0.008 min
 Response: 2731852
 Conc: 527.64 ng/ml

Instrument :
 ECD_O
 ClientSampleId :
 AR1660CCC500

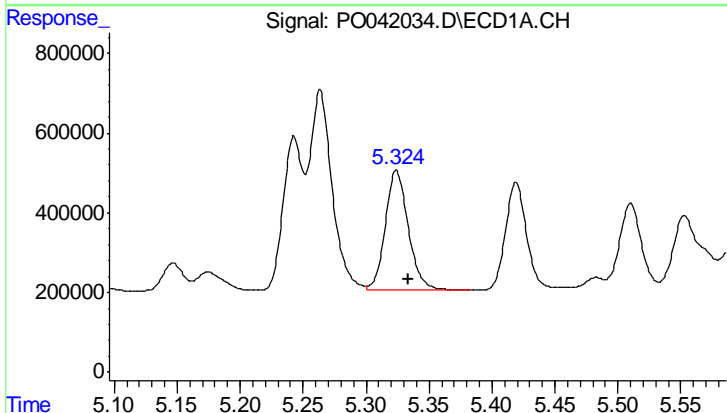
Manual Integrations
 APPROVED

ugo
 2/4/2018 10:19:28 AM



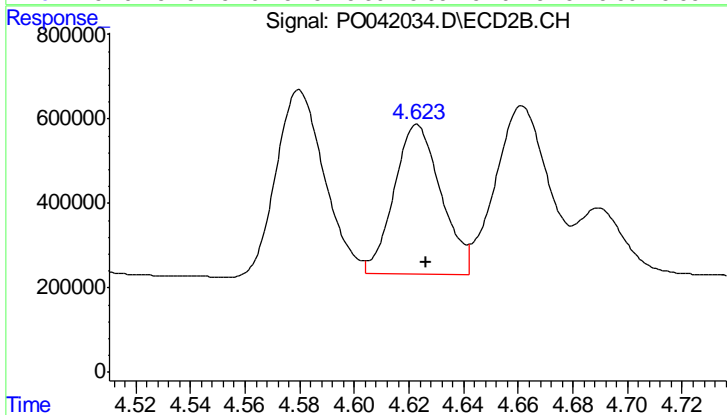
#3 AR-1016-1

R.T.: 4.184 min
 Delta R.T.: -0.004 min
 Response: 4812949
 Conc: 640.40 ng/ml m



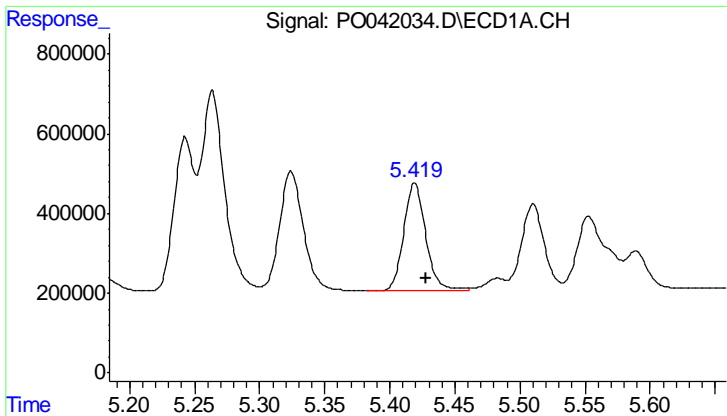
#4 AR-1016-2

R.T.: 5.324 min
 Delta R.T.: -0.009 min
 Response: 3844002
 Conc: 535.94 ng/ml



#4 AR-1016-2

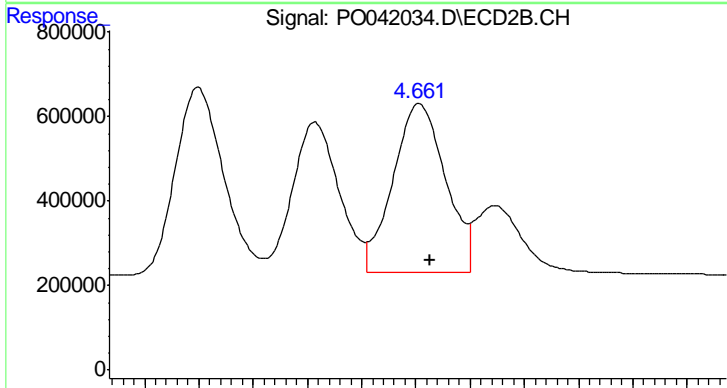
R.T.: 4.623 min
 Delta R.T.: -0.004 min
 Response: 4216641
 Conc: 600.46 ng/ml



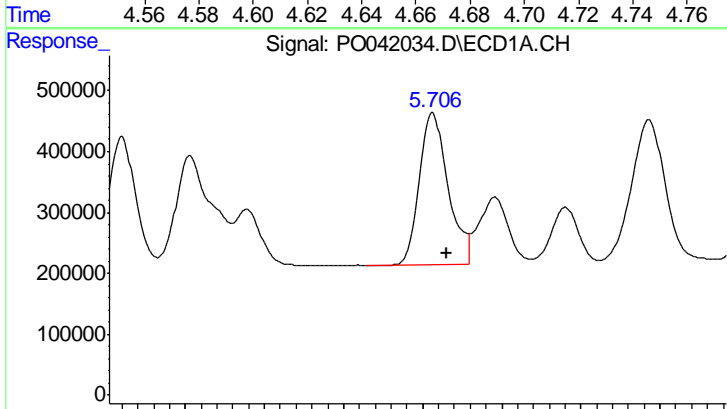
#5 AR-1016-3
 R.T.: 5.419 min
 Delta R.T.: -0.009 min
 Response: 3159001
 Conc: 530.10 ng/ml

Instrument :
 ECD_O
ClientSampled :
 AR1660CCC500

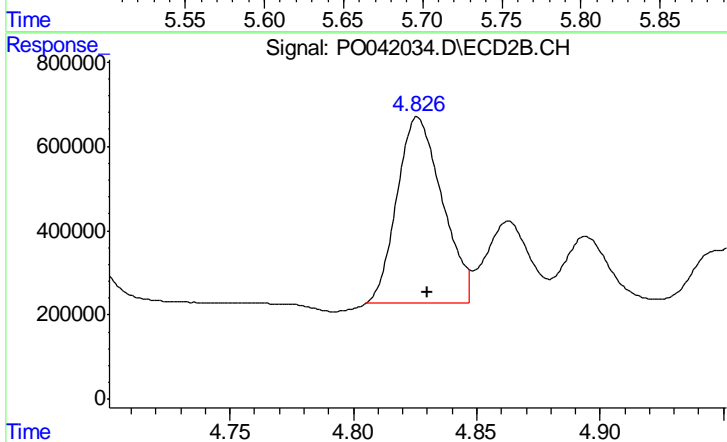
Manual Integrations
APPROVED
 ugo
 2/4/2018 10:19:28 AM



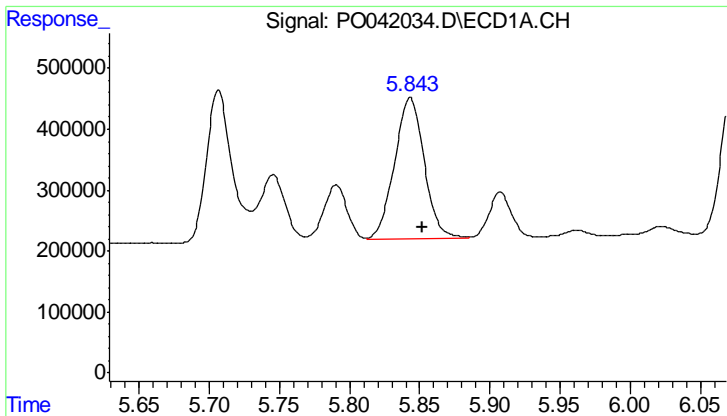
#5 AR-1016-3
 R.T.: 4.661 min
 Delta R.T.: -0.004 min
 Response: 5350322
 Conc: 631.86 ng/ml



#6 AR-1016-4
 R.T.: 5.706 min
 Delta R.T.: -0.009 min
 Response: 3122396
 Conc: 515.92 ng/ml



#6 AR-1016-4
 R.T.: 4.826 min
 Delta R.T.: -0.004 min
 Response: 5618289
 Conc: 602.92 ng/ml m



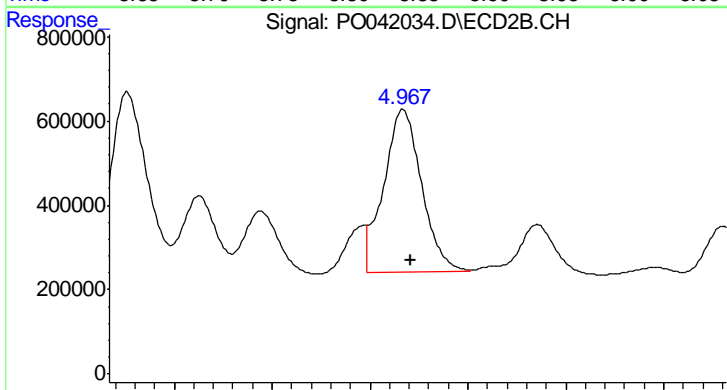
#7 AR-1016-5

R.T.: 5.843 min
 Delta R.T.: -0.009 min
 Response: 3428832
 Conc: 530.81 ng/ml

Instrument :
 ECD_O
 ClientSampleId :
 AR1660CCC500

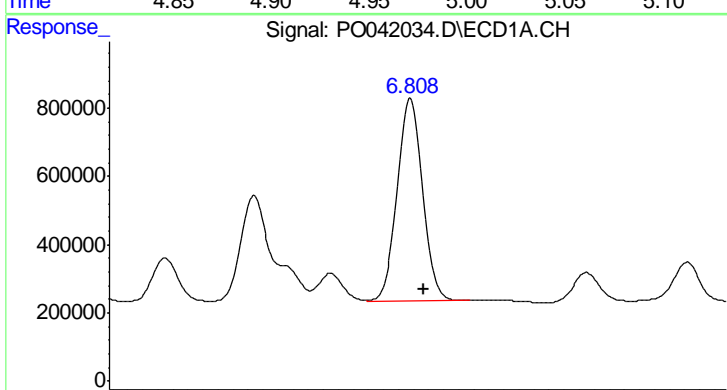
Manual Integrations
 APPROVED

ugo
 2/4/2018 10:19:28 AM



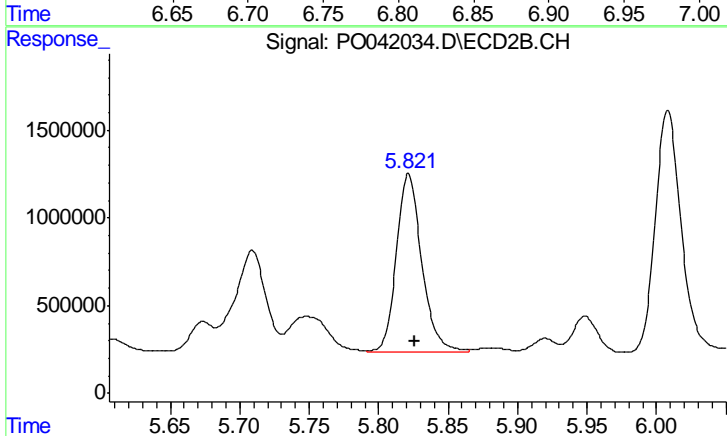
#7 AR-1016-5

R.T.: 4.967 min
 Delta R.T.: -0.004 min
 Response: 5167499
 Conc: 521.20 ng/ml m



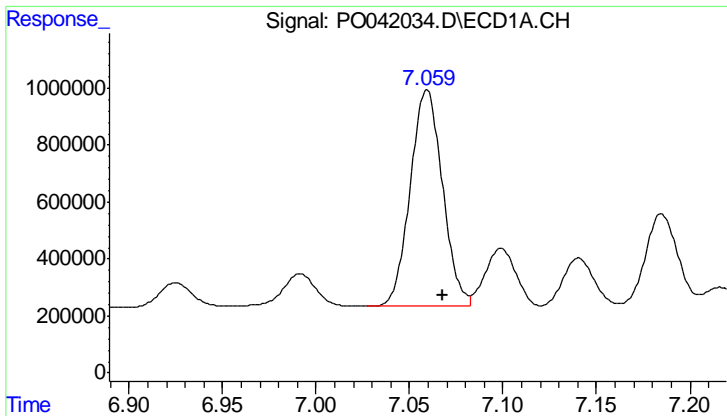
#31 AR-1260-1

R.T.: 6.808 min
 Delta R.T.: -0.008 min
 Response: 6878947
 Conc: 546.83 ng/ml



#31 AR-1260-1

R.T.: 5.821 min
 Delta R.T.: -0.004 min
 Response: 12961296
 Conc: 607.18 ng/ml



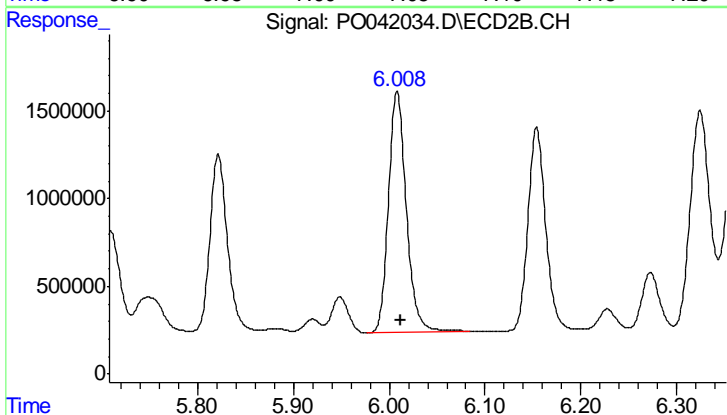
#32 AR-1260-2

R.T.: 7.059 min
 Delta R.T.: -0.008 min
 Response: 9136419
 Conc: 525.10 ng/ml

Instrument :
 ECD_O
 ClientSampleId :
 AR1660CCC500

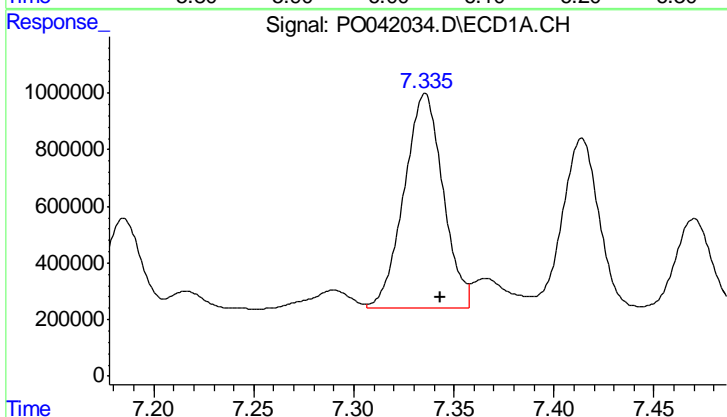
Manual Integrations
 APPROVED

ugo
 2/4/2018 10:19:28 AM



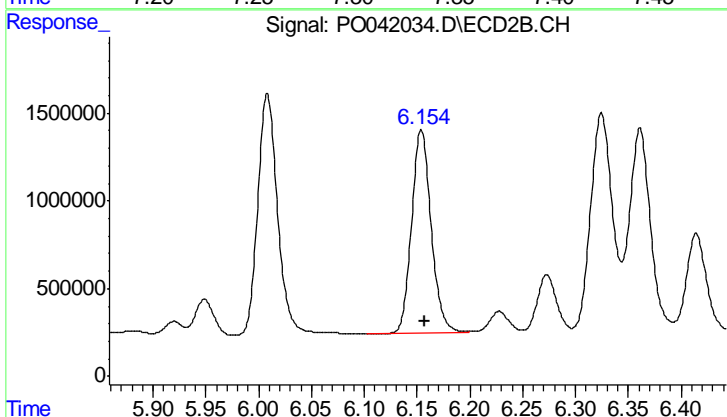
#32 AR-1260-2

R.T.: 6.008 min
 Delta R.T.: -0.004 min
 Response: 17930406
 Conc: 567.66 ng/ml



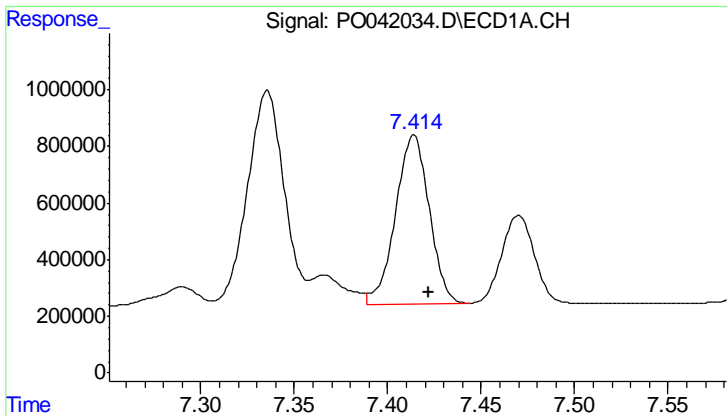
#33 AR-1260-3

R.T.: 7.336 min
 Delta R.T.: -0.008 min
 Response: 10284223
 Conc: 512.37 ng/ml



#33 AR-1260-3

R.T.: 6.154 min
 Delta R.T.: -0.004 min
 Response: 14948923
 Conc: 572.75 ng/ml



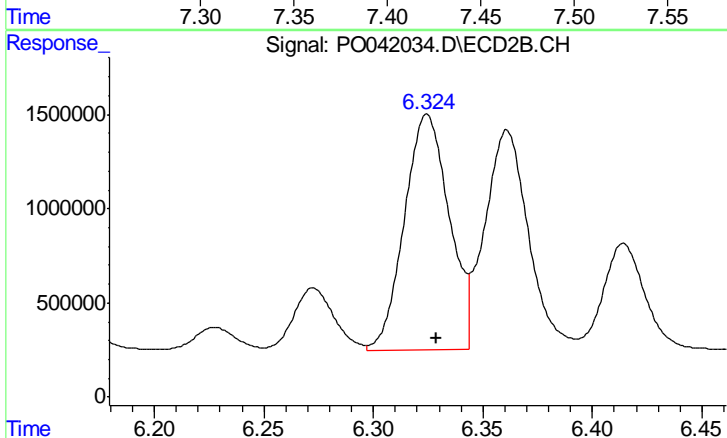
#34 AR-1260-4

R.T.: 7.414 min
 Delta R.T.: -0.008 min
 Response: 7526927
 Conc: 639.93 ng/ml

Instrument :
 ECD_O
 ClientSampleId :
 AR1660CCC500

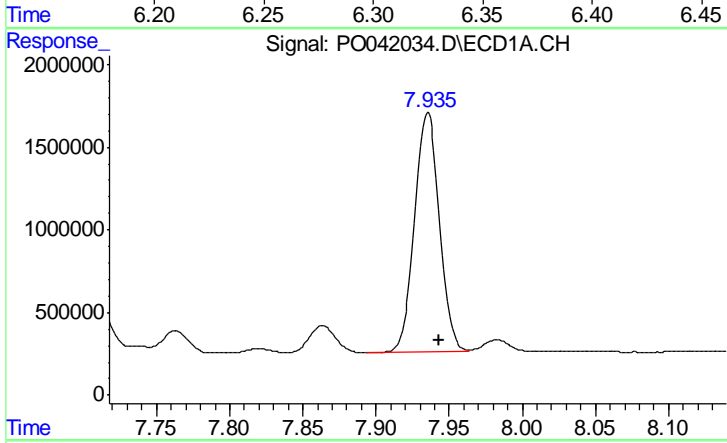
Manual Integrations
 APPROVED

ugo
 2/4/2018 10:19:28 AM



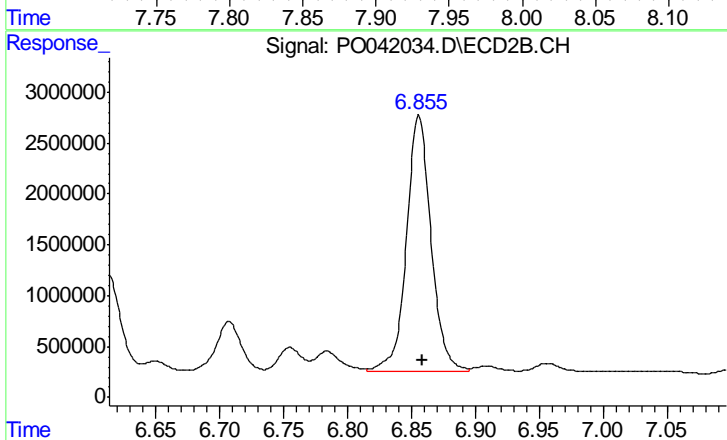
#34 AR-1260-4

R.T.: 6.325 min
 Delta R.T.: -0.004 min
 Response: 17835689
 Conc: 523.08 ng/ml



#35 AR-1260-5

R.T.: 7.935 min
 Delta R.T.: -0.008 min
 Response: 17146400
 Conc: 651.89 ng/ml



#35 AR-1260-5

R.T.: 6.856 min
 Delta R.T.: -0.003 min
 Response: 33805913
 Conc: 630.07 ng/ml