

Data Path : P:\HPCHEM1\ECD\_O\Data\PO020518\  
 Data File : PO042083.D  
 Signal(s) : Signal #1: ECD1A.CH Signal #2: ECD2B.CH  
 Acq On : 02 Feb 2018 15:41  
 Operator : SM/UA  
 Sample : J1257-17DL 2X  
 Misc :  
 ALS Vial : 4 Sample Multiplier: 1

**Instrument :**  
 ECD\_O  
**ClientSampleId :**  
 WC-20(5-15)DL

**Manual Integrations**  
**APPROVED**  
 ugo  
 2/2/2018 5:42:15 PM

Integration File signal 1: autoint1.e  
 Integration File signal 2: autoint2.e  
 Quant Time: Feb 02 16:31:42 2018  
 Quant Method : P:\HPCHEM1\ECD\_O\PO012318.M  
 Quant Title : GC EXTRACTABLES  
 QLast Update : Tue Jan 23 01:50:31 2018  
 Response via : Initial Calibration  
 Integrator: ChemStation 6890 Scale Mode: Small noise peaks clipped

Volume Inj. : 2 µl  
 Signal #1 Phase : ZB-MR1 Signal #2 Phase: ZB-MR2  
 Signal #1 Info : 30Mx0.32mmx 0.50µ Signal #2 Info : 30M x 0.32mm x 0.25µm

Compound	RT#1	RT#2	Resp#1	Resp#2	ng/ml	ng/ml
-----						
System Monitoring Compounds						
1) SA Tetrachlo...	4.119	3.359	1641170	1923555	8.503	6.626
2) SA Decachlor...	9.516	8.155	1161041	1471308	4.942	4.114
Target Compounds						
16) L4 AR-1242-1	4.802	4.000	1977017	4457428	637.705	1756.446 #
17) L4 AR-1242-2	5.268	4.408	4126592	5654850	561.022	329.574m#
18) L4 AR-1242-3	5.423	4.577	2108176	2659218	573.493	505.532
19) L4 AR-1242-4	5.709	4.659	2229960	2548101	593.042m	486.734
20) L4 AR-1242-5	5.847	4.823	2133652	2891545	511.567	500.085m
31) L7 AR-1260-1	6.809	5.819	691942	1773484	55.005	83.080 #
32) L7 AR-1260-2	7.059	6.006	1055504	2034911	60.663	64.423
33) L7 AR-1260-3	7.337	6.151	1087866	1035158	54.199	39.661m#
34) L7 AR-1260-4	7.415	6.323	410123	1726759	34.868	50.642 #
35) L7 AR-1260-5	7.936	6.852	900269	2005378	34.227	37.376
-----						

(f)=RT Delta > 1/2 Window (#)=Amounts differ by > 25% (m)=manual int.

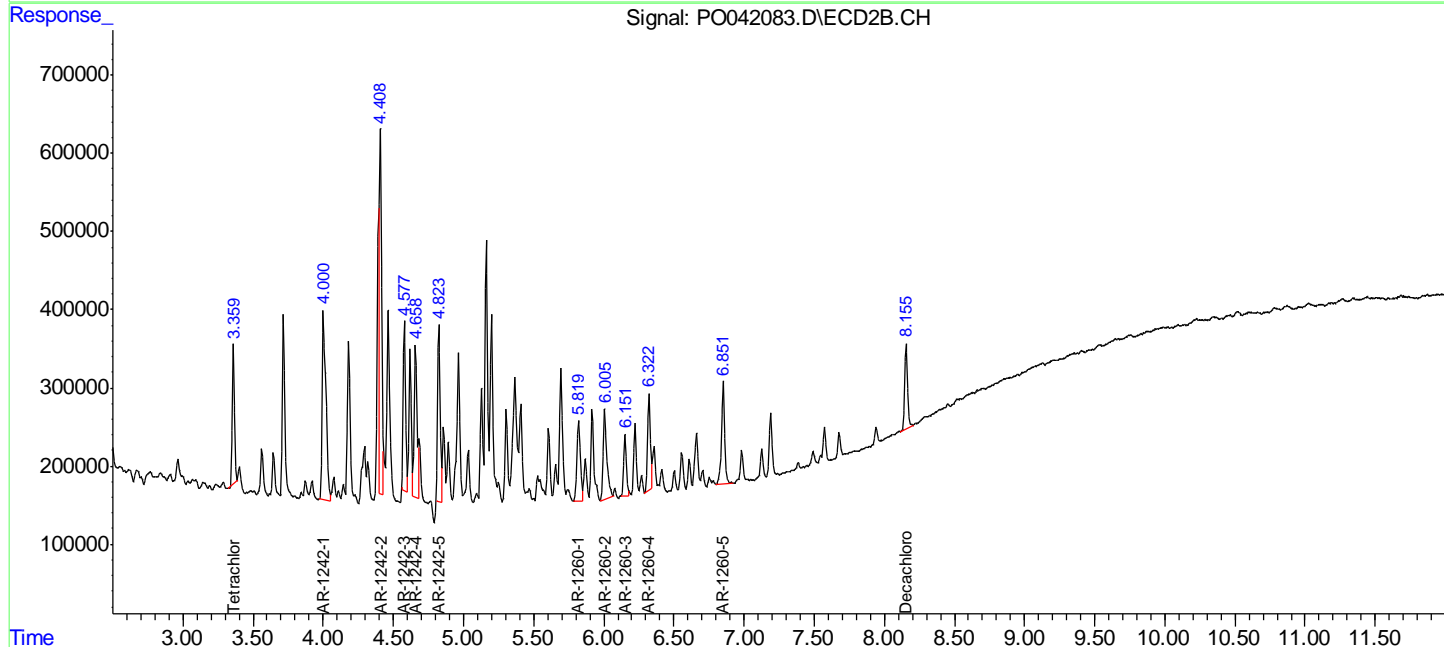
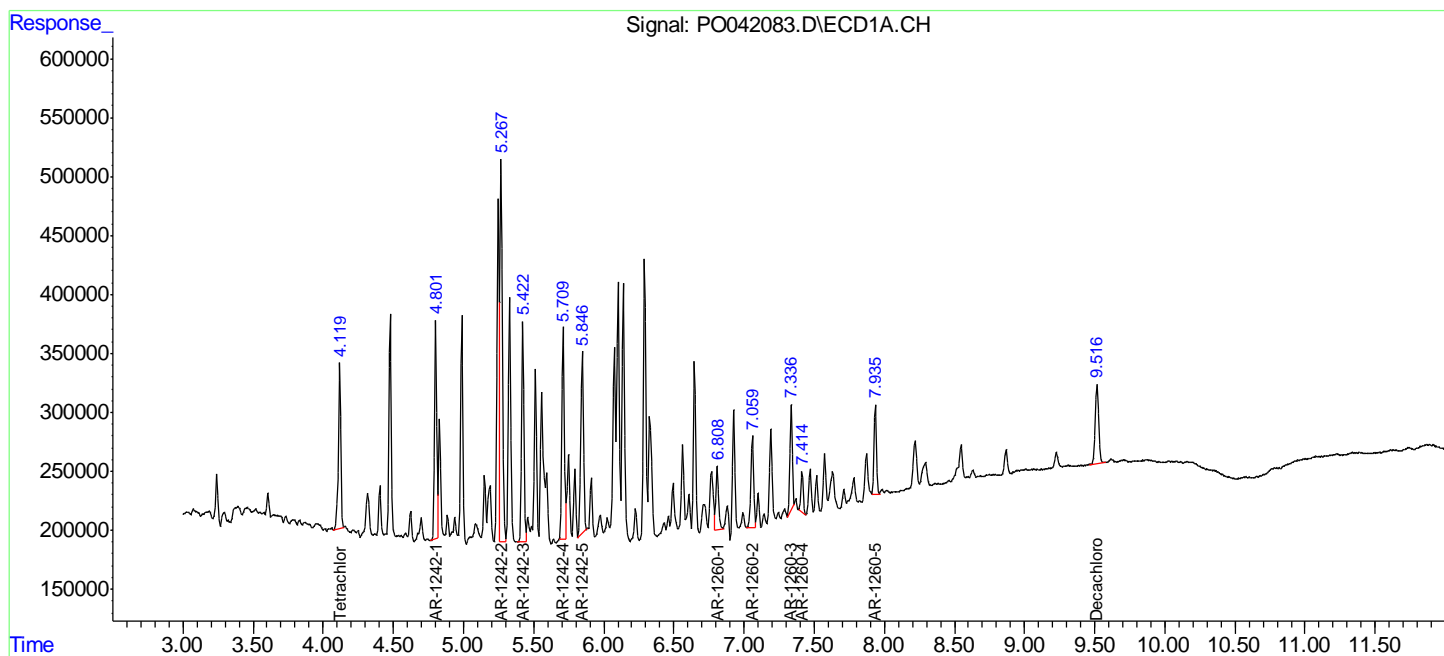
Data Path : P:\HPCHEM1\ECD\_O\Data\PO020518\  
 Data File : PO042083.D  
 Signal(s) : Signal #1: ECD1A.CH Signal #2: ECD2B.CH  
 Acq On : 02 Feb 2018 15:41  
 Operator : SM/UA  
 Sample : J1257-17DL 2X  
 Misc :  
 ALS Vial : 4 Sample Multiplier: 1

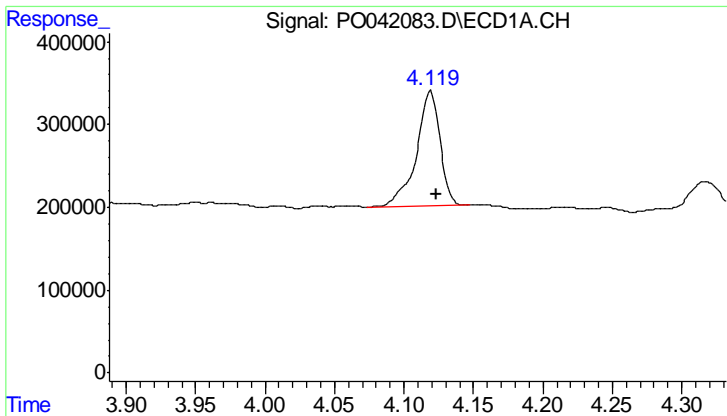
**Instrument :**  
 ECD\_O  
**Client Sampled :**  
 WC-20(5-15)DL

**Manual Integrations**  
**APPROVED**  
 ugo  
 2/2/2018 5:42:15 PM

Integration File signal 1: autoint1.e  
 Integration File signal 2: autoint2.e  
 Quant Time: Feb 02 16:31:42 2018  
 Quant Method : P:\HPCHEM1\ECD\_O\PO012318.M  
 Quant Title : GC EXTRACTABLES  
 QLast Update : Tue Jan 23 01:50:31 2018  
 Response via : Initial Calibration  
 Integrator: ChemStation 6890 Scale Mode: Small noise peaks clipped

Volume Inj. : 2 µl  
 Signal #1 Phase : ZB-MR1 Signal #2 Phase: ZB-MR2  
 Signal #1 Info : 30Mx0.32mmx 0.50µ Signal #2 Info : 30M x 0.32mm x 0.25µm





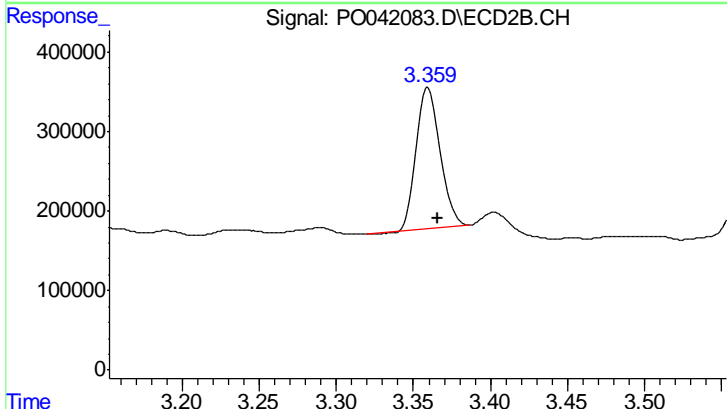
#1 Tetrachloro-m-xylene

R.T.: 4.119 min  
 Delta R.T.: -0.004 min  
 Response: 1641170  
 Conc: 8.50 ng/ml

Instrument :  
 ECD\_O  
 ClientSampleId :  
 WC-20(5-15)DL

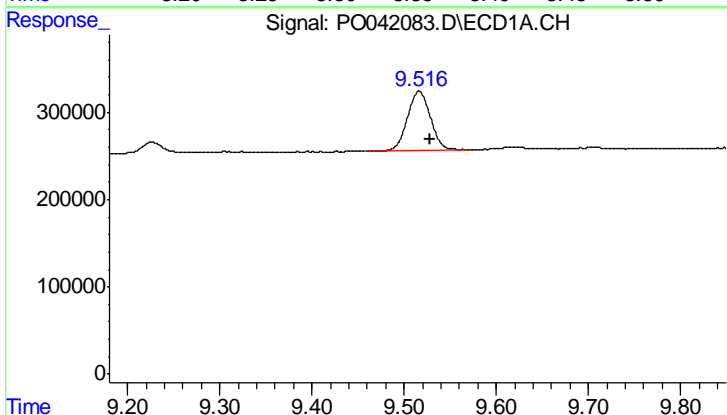
Manual Integrations  
 APPROVED

ugo  
 2/2/2018 5:42:15 PM



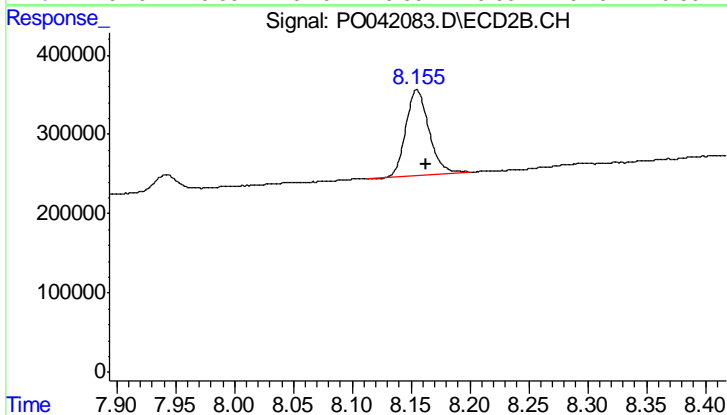
#1 Tetrachloro-m-xylene

R.T.: 3.359 min  
 Delta R.T.: -0.007 min  
 Response: 1923555  
 Conc: 6.63 ng/ml



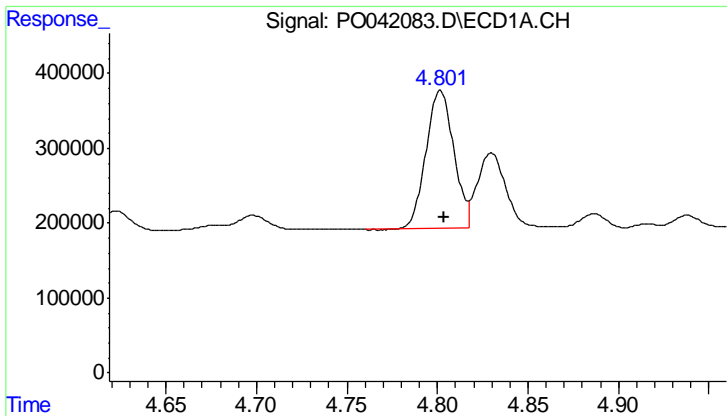
#2 Decachlorobiphenyl

R.T.: 9.516 min  
 Delta R.T.: -0.012 min  
 Response: 1161041  
 Conc: 4.94 ng/ml



#2 Decachlorobiphenyl

R.T.: 8.155 min  
 Delta R.T.: -0.007 min  
 Response: 1471308  
 Conc: 4.11 ng/ml



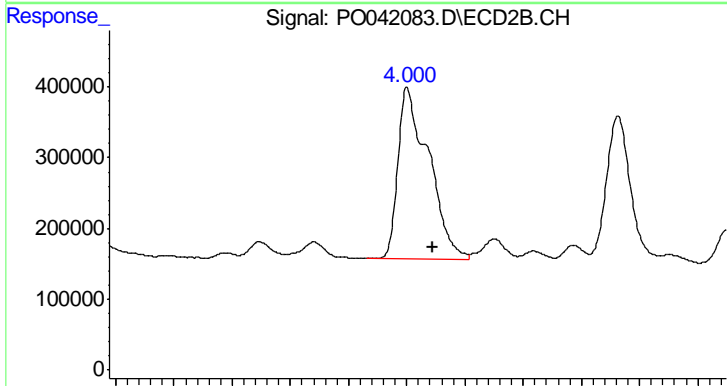
#16 AR-1242-1

R.T.: 4.802 min  
 Delta R.T.: -0.002 min  
 Response: 1977017  
 Conc: 637.71 ng/ml

Instrument :  
 ECD\_O  
 ClientSampled :  
 WC-20(5-15)DL

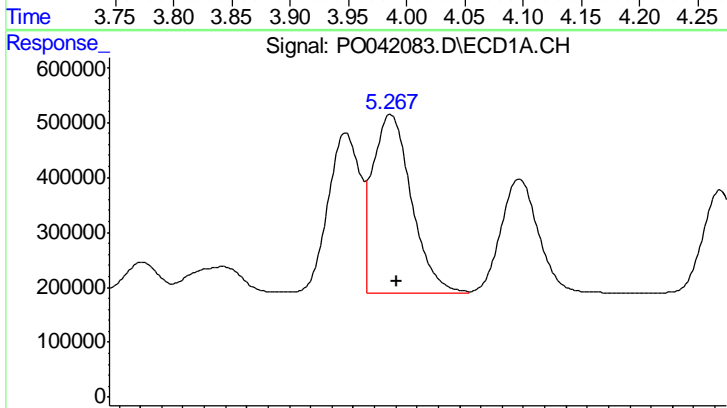
Manual Integrations  
 APPROVED

ugo  
 2/2/2018 5:42:15 PM



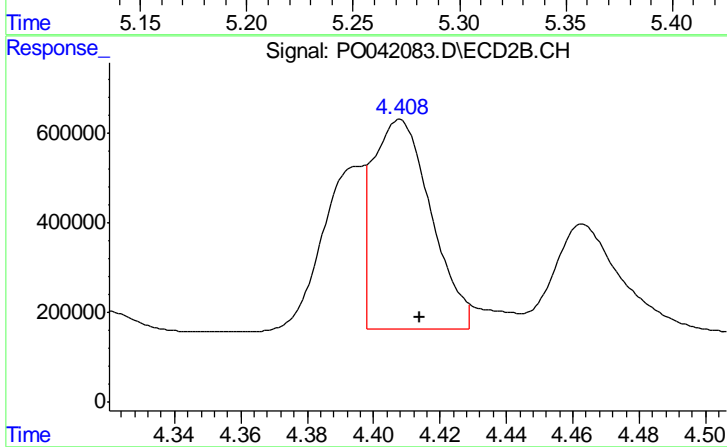
#16 AR-1242-1

R.T.: 4.000 min  
 Delta R.T.: -0.022 min  
 Response: 4457428  
 Conc: 1756.45 ng/ml



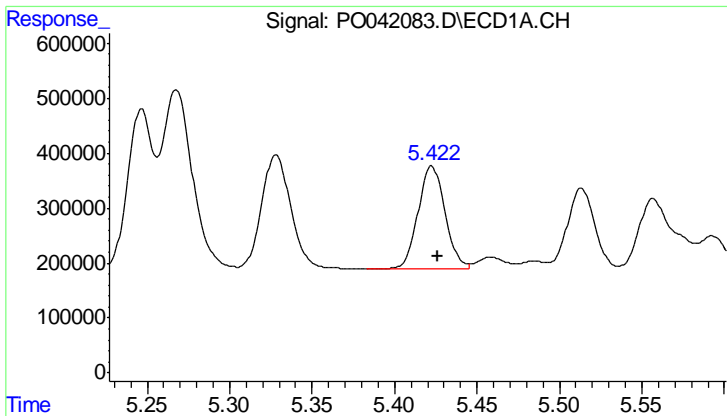
#17 AR-1242-2

R.T.: 5.268 min  
 Delta R.T.: -0.003 min  
 Response: 4126592  
 Conc: 561.02 ng/ml



#17 AR-1242-2

R.T.: 4.408 min  
 Delta R.T.: -0.006 min  
 Response: 5654850  
 Conc: 329.57 ng/ml m



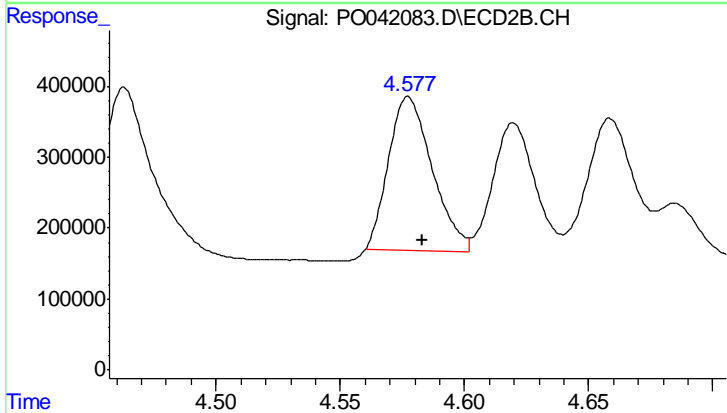
#18 AR-1242-3

R.T.: 5.423 min  
 Delta R.T.: -0.003 min  
 Response: 2108176  
 Conc: 573.49 ng/ml

Instrument :  
 ECD\_O  
 ClientSampled :  
 WC-20(5-15)DL

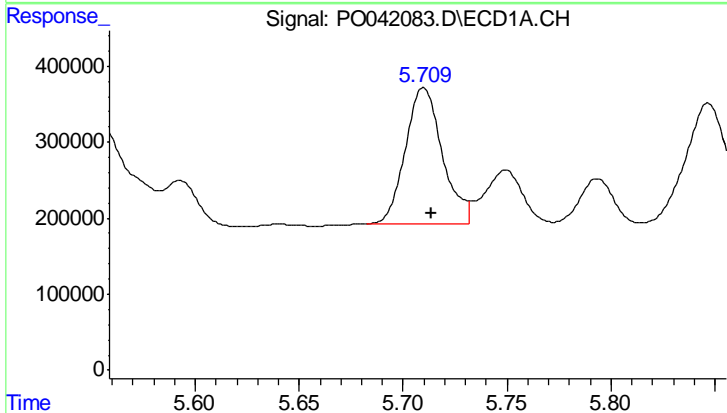
Manual Integrations  
 APPROVED

ugo  
 2/2/2018 5:42:15 PM



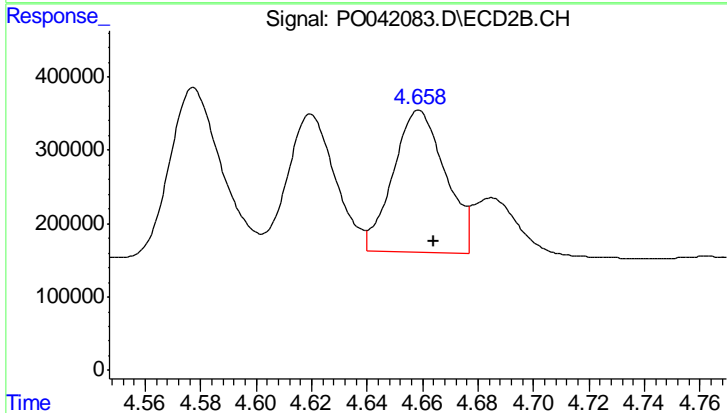
#18 AR-1242-3

R.T.: 4.577 min  
 Delta R.T.: -0.006 min  
 Response: 2659218  
 Conc: 505.53 ng/ml



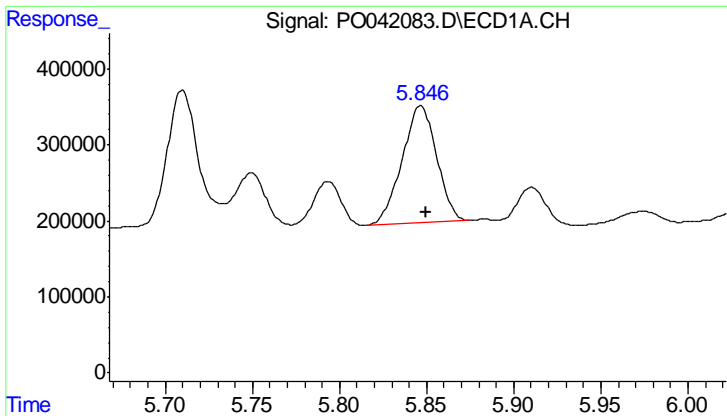
#19 AR-1242-4

R.T.: 5.709 min  
 Delta R.T.: -0.004 min  
 Response: 2229960  
 Conc: 593.04 ng/ml m



#19 AR-1242-4

R.T.: 4.659 min  
 Delta R.T.: -0.006 min  
 Response: 2548101  
 Conc: 486.73 ng/ml



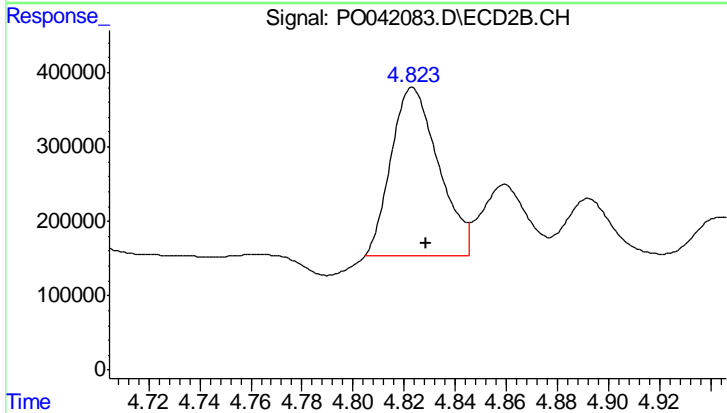
#20 AR-1242-5

R.T.: 5.847 min  
 Delta R.T.: -0.003 min  
 Response: 2133652  
 Conc: 511.57 ng/ml

Instrument :  
 ECD\_O  
 ClientSampled :  
 WC-20(5-15)DL

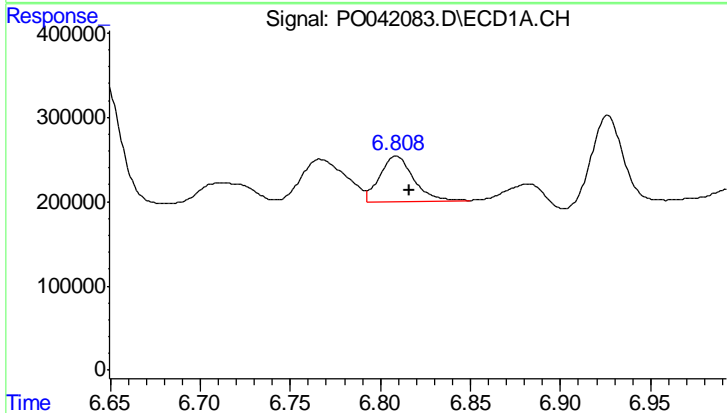
Manual Integrations  
 APPROVED

ugo  
 2/2/2018 5:42:15 PM



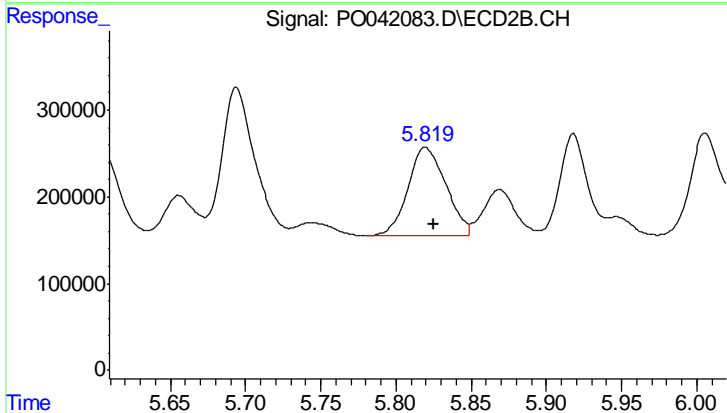
#20 AR-1242-5

R.T.: 4.823 min  
 Delta R.T.: -0.006 min  
 Response: 2891545  
 Conc: 500.09 ng/ml m



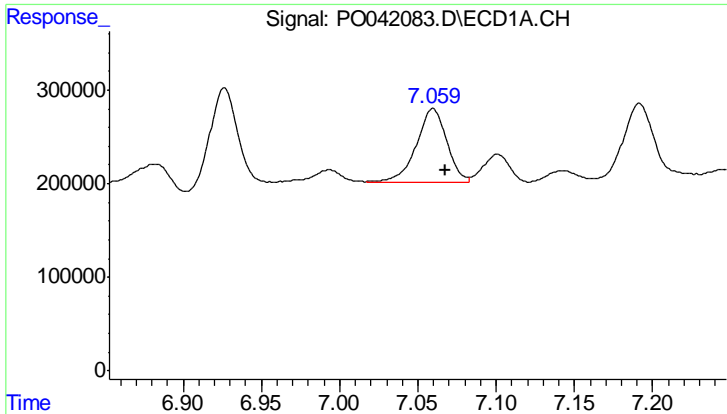
#31 AR-1260-1

R.T.: 6.809 min  
 Delta R.T.: -0.008 min  
 Response: 691942  
 Conc: 55.00 ng/ml



#31 AR-1260-1

R.T.: 5.819 min  
 Delta R.T.: -0.006 min  
 Response: 1773484  
 Conc: 83.08 ng/ml



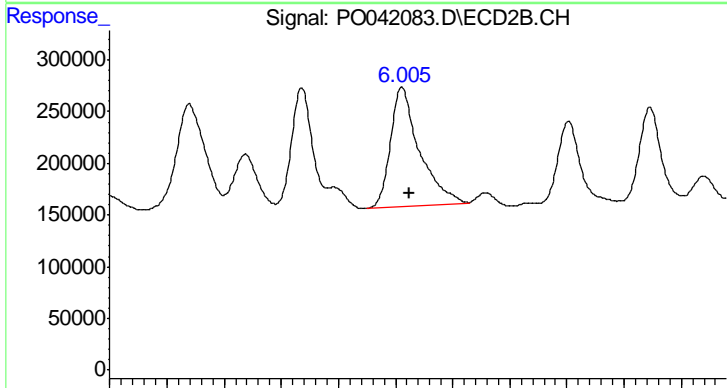
#32 AR-1260-2

R.T.: 7.059 min  
 Delta R.T.: -0.008 min  
 Response: 1055504  
 Conc: 60.66 ng/ml

Instrument :  
 ECD\_O  
 ClientSampled :  
 WC-20(5-15)DL

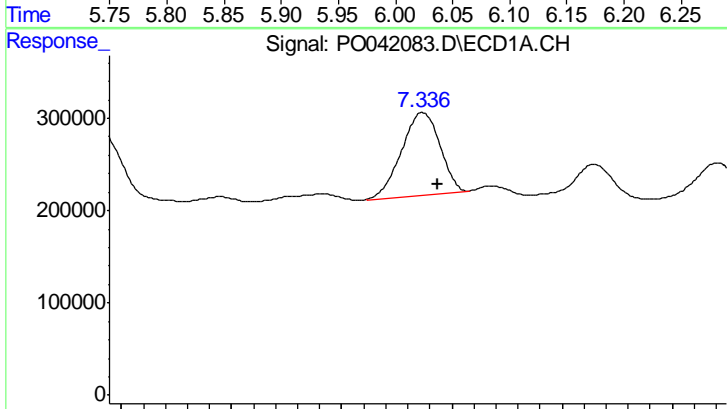
Manual Integrations  
 APPROVED

ugo  
 2/2/2018 5:42:15 PM



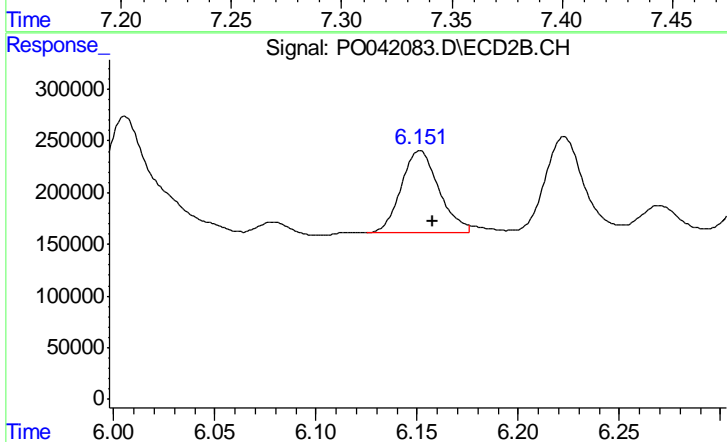
#32 AR-1260-2

R.T.: 6.006 min  
 Delta R.T.: -0.006 min  
 Response: 2034911  
 Conc: 64.42 ng/ml



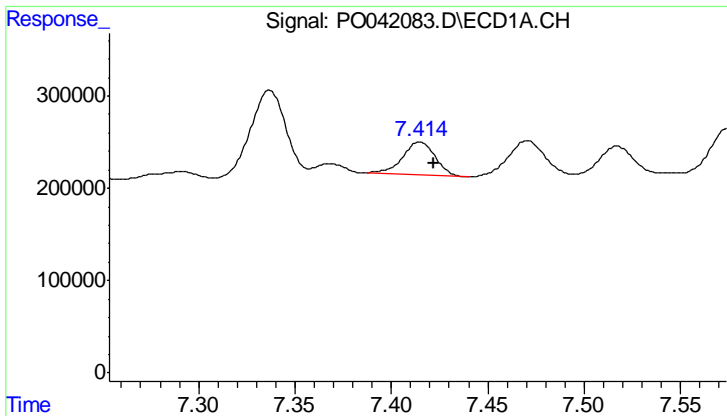
#33 AR-1260-3

R.T.: 7.337 min  
 Delta R.T.: -0.007 min  
 Response: 1087866  
 Conc: 54.20 ng/ml



#33 AR-1260-3

R.T.: 6.151 min  
 Delta R.T.: -0.007 min  
 Response: 1035158  
 Conc: 39.66 ng/ml m



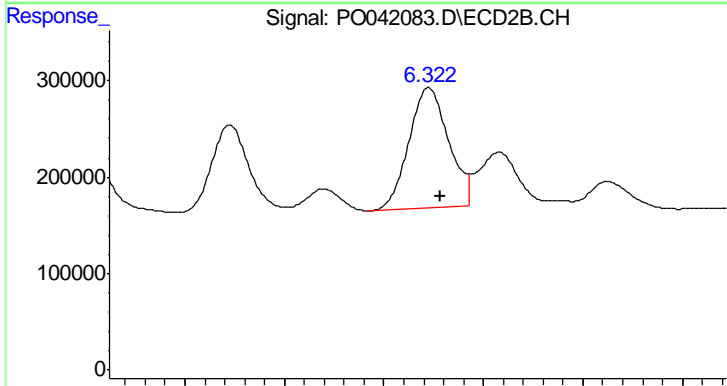
#34 AR-1260-4

R.T.: 7.415 min  
 Delta R.T.: -0.007 min  
 Response: 410123  
 Conc: 34.87 ng/ml

Instrument :  
 ECD\_O  
 ClientSampleId :  
 WC-20(5-15)DL

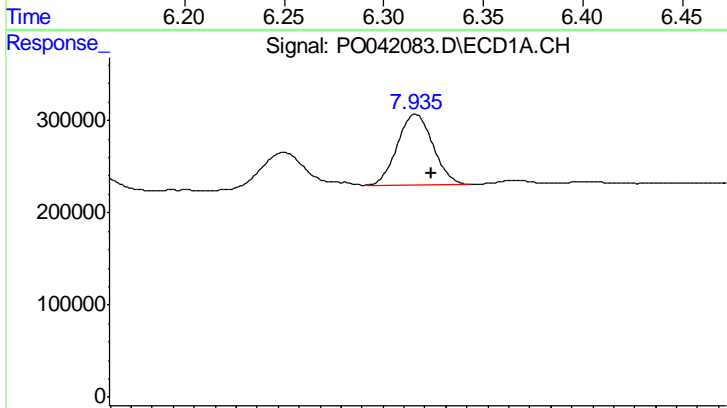
Manual Integrations  
 APPROVED

ugo  
 2/2/2018 5:42:15 PM



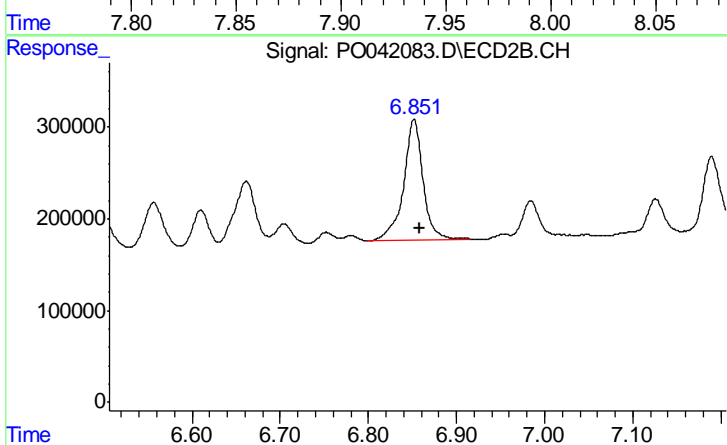
#34 AR-1260-4

R.T.: 6.323 min  
 Delta R.T.: -0.006 min  
 Response: 1726759  
 Conc: 50.64 ng/ml



#35 AR-1260-5

R.T.: 7.936 min  
 Delta R.T.: -0.008 min  
 Response: 900269  
 Conc: 34.23 ng/ml



#35 AR-1260-5

R.T.: 6.852 min  
 Delta R.T.: -0.007 min  
 Response: 2005378  
 Conc: 37.38 ng/ml