

Data Path : P:\HPCHEM1\ECD_O\Data\PO020618\
 Data File : PO042118.D
 Signal(s) : Signal #1: ECD1A.CH Signal #2: ECD2B.CH
 Acq On : 03 Feb 2018 16:24
 Operator : SM/UA
 Sample : J1410-05
 Misc :
 ALS Vial : 5 Sample Multiplier: 1

Instrument :
 ECD_O
 ClientSampleId :
 CHRT-27166

Integration File signal 1: autoint1.e
 Integration File signal 2: autoint2.e
 Quant Time: Feb 03 20:43:51 2018
 Quant Method : P:\HPCHEM1\ECD_O\PO012318.M
 Quant Title : GC EXTRACTABLES
 QLast Update : Tue Jan 23 01:50:31 2018
 Response via : Initial Calibration
 Integrator: ChemStation 6890 Scale Mode: Small noise peaks clipped

Volume Inj. : 2 µl
 Signal #1 Phase : ZB-MR1 Signal #2 Phase: ZB-MR2
 Signal #1 Info : 30Mx0.32mmx 0.50µ Signal #2 Info : 30M x 0.32mm x 0.25µm

Compound	RT#1	RT#2	Resp#1	Resp#2	ng/ml	ng/ml

System Monitoring Compounds						
1) SA Tetrachlo...	4.116	3.363	3087625	3631740	15.997	12.511
2) SA Decachlor...	9.510	8.159	2198735	3633494	9.358	10.160
Target Compounds						
6) L1 AR-1016-4	0.000	4.789	0	341458	N.D.	36.643 #
7) L1 AR-1016-5	0.000	5.008	0	913330	N.D.	92.120 #
12) L3 AR-1232-2	5.187	0.000	767780	0	291.743	N.D. #
20) L4 AR-1242-5	0.000	4.789	0	341458	N.D.	59.054 #
21) L5 AR-1248-1	0.000	4.789	0	341458	N.D.	31.235 #
22) L5 AR-1248-2	0.000	5.008	0	913330	N.D.	93.929 #
23) L5 AR-1248-3	6.097	5.166	218041	649850	23.844	38.316 #
24) L5 AR-1248-4	6.154	5.200	237893	1195336	26.547	88.527 #
25) L5 AR-1248-5	6.335	5.727	628032	1832230	105.130	237.783 #
26) L6 AR-1254-1	6.269	5.166	2112902	649850	150.096	35.135 #
27) L6 AR-1254-2	6.551	0.000	1441294	0	165.715	N.D. #
28) L6 AR-1254-3	6.646	5.727	558493	1832230	36.034	66.597 #
31) L7 AR-1260-1	6.786	0.000	1862033	0	148.019	N.D. #
32) L7 AR-1260-2	7.086	6.009	749586	694702	43.081	21.994 #
34) L7 AR-1260-4	7.482	6.328	334789	61460	28.463	1.802 #
35) L7 AR-1260-5	7.911	0.000	18373657	0	698.550	N.D. #
36) L8 AR-1262-1	6.786	6.009	1862033	694702	196.882	31.278 #
37) L8 AR-1262-2	7.049	0.000	462625	0	39.735	N.D. #
38) L8 AR-1262-3	0.000	6.328	0	61460	N.D.	1.658 #
40) L8 AR-1262-5	7.911	0.000	18373657	0	570.758	N.D. #
41) L9 AR-1268-1	0.000	7.100	0	5021030	N.D.	68.509 #
42) L9 AR-1268-2	0.000	7.209	0	1135645	N.D.	17.565 #
43) L9 AR-1268-3	8.456	0.000	3089425	0	109.131	N.D. #
44) L9 AR-1268-4	0.000	7.724	0	3600319	N.D.	162.067 #

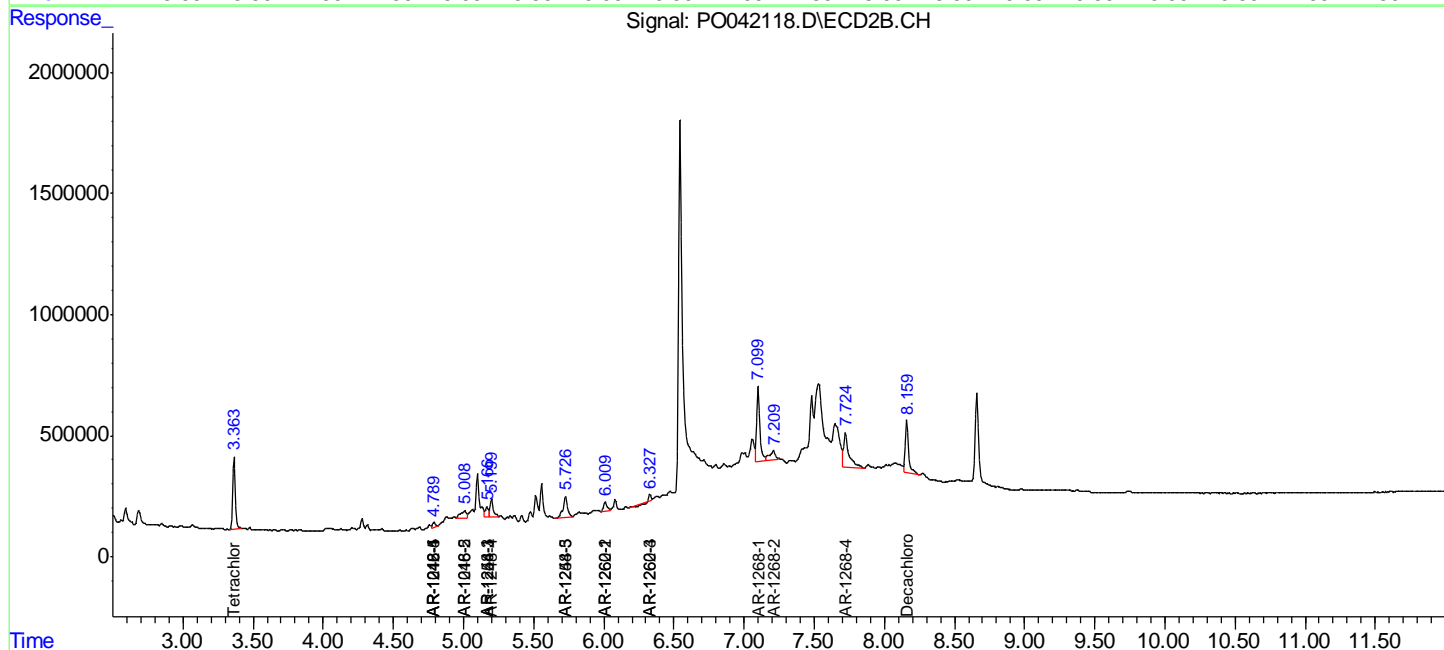
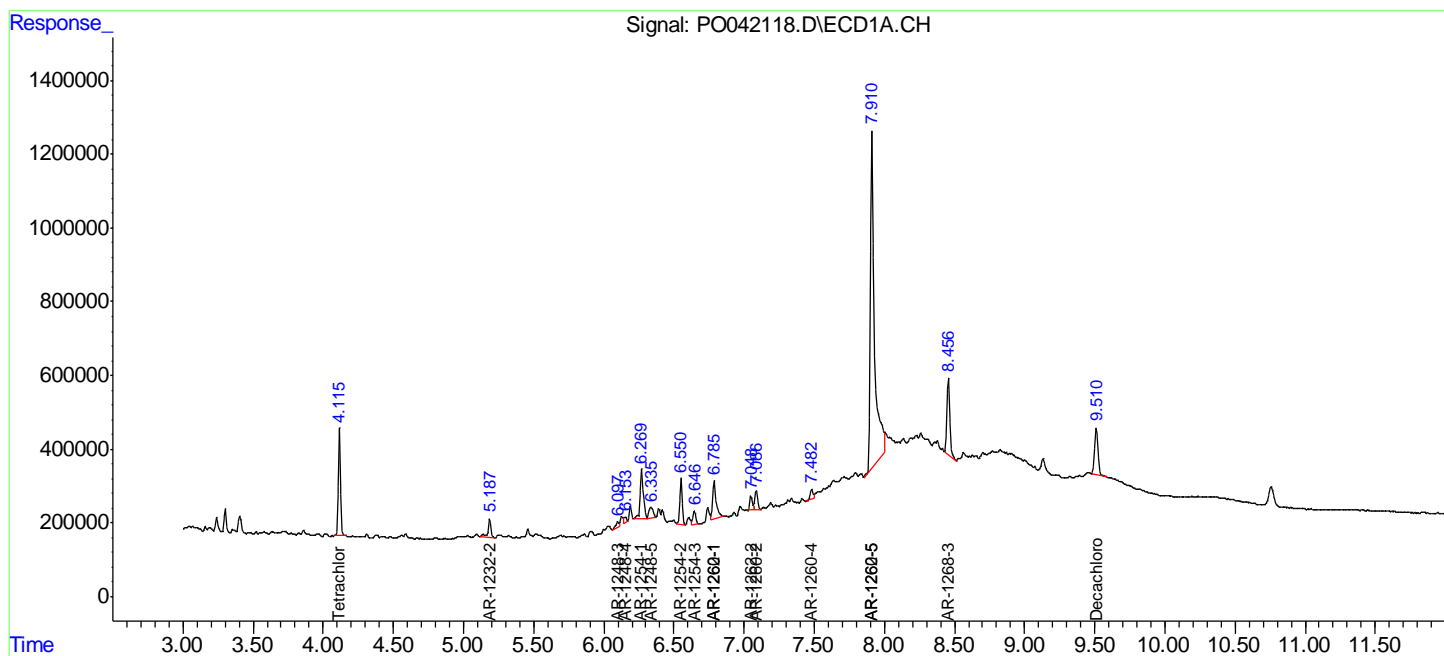
(f)=RT Delta > 1/2 Window (#)=Amounts differ by > 25% (m)=manual int.

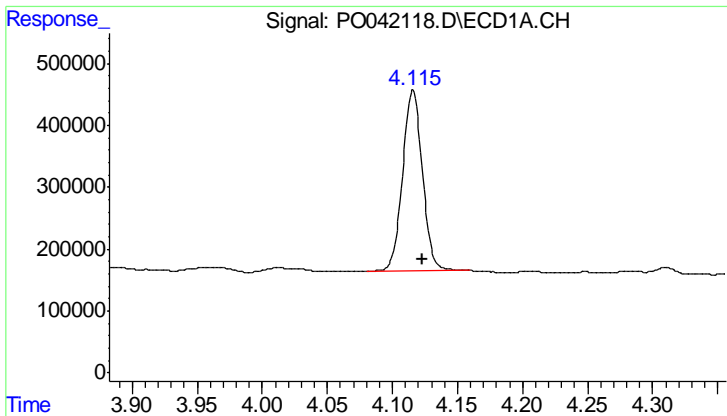
Data Path : P:\HPCHEM1\ECD_O\Data\PO020618\
 Data File : PO042118.D
 Signal(s) : Signal #1: ECD1A.CH Signal #2: ECD2B.CH
 Acq On : 03 Feb 2018 16:24
 Operator : SM/UA
 Sample : J1410-05
 Misc :
 ALS Vial : 5 Sample Multiplier: 1

Instrument :
 ECD_O
 Client Sampled :
 CHRT-27166

Integration File signal 1: autoint1.e
 Integration File signal 2: autoint2.e
 Quant Time: Feb 03 20:43:51 2018
 Quant Method : P:\HPCHEM1\ECD_O\PO012318.M
 Quant Title : GC EXTRACTABLES
 QLast Update : Tue Jan 23 01:50:31 2018
 Response via : Initial Calibration
 Integrator: ChemStation 6890 Scale Mode: Small noise peaks clipped

Volume Inj. : 2 µl
 Signal #1 Phase : ZB-MR1 Signal #2 Phase: ZB-MR2
 Signal #1 Info : 30Mx0.32mmx 0.50µ Signal #2 Info : 30M x 0.32mm x 0.25µm

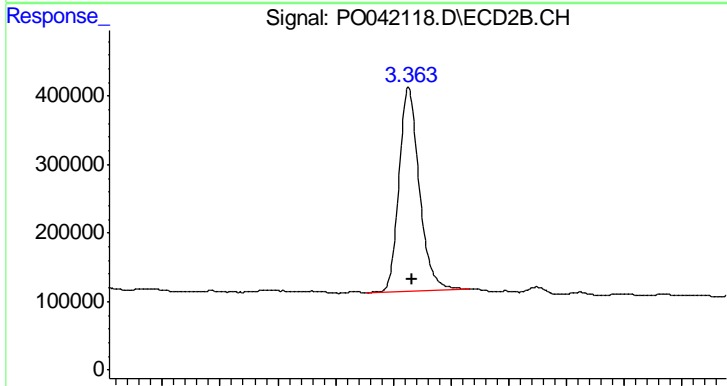




#1 Tetrachloro-m-xylene

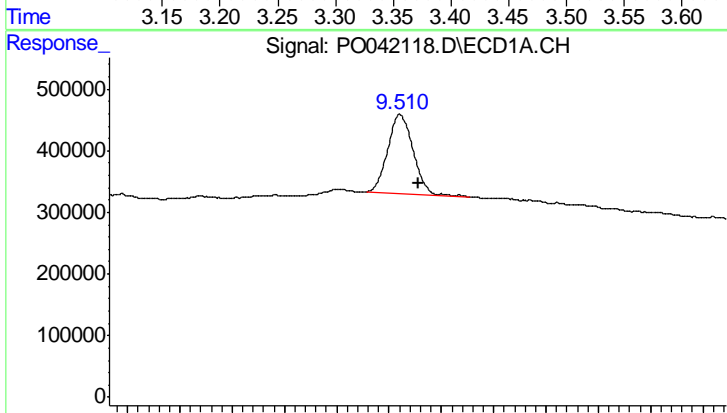
R.T.: 4.116 min
 Delta R.T.: -0.008 min
 Response: 3087625
 Conc: 16.00 ng/ml

Instrument :
 ECD_O
 ClientSampleId :
 CHRT-27166



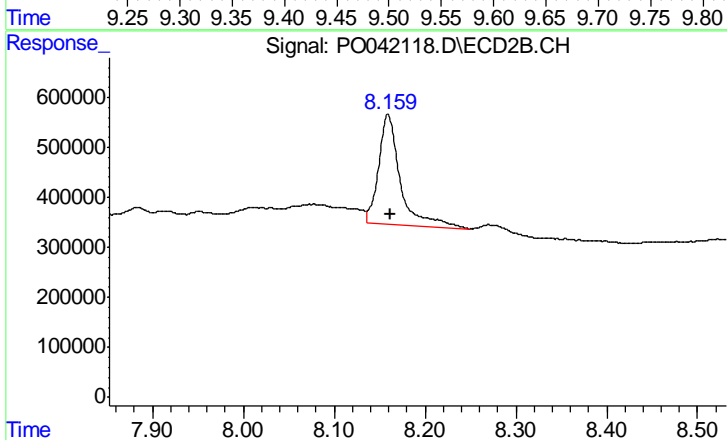
#1 Tetrachloro-m-xylene

R.T.: 3.363 min
 Delta R.T.: -0.003 min
 Response: 3631740
 Conc: 12.51 ng/ml



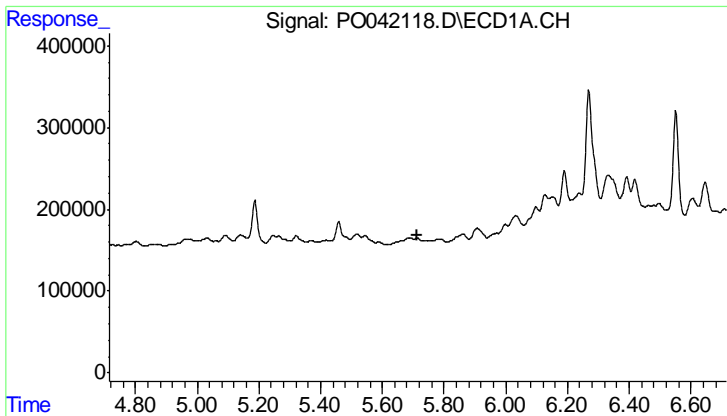
#2 Decachlorobiphenyl

R.T.: 9.510 min
 Delta R.T.: -0.018 min
 Response: 2198735
 Conc: 9.36 ng/ml



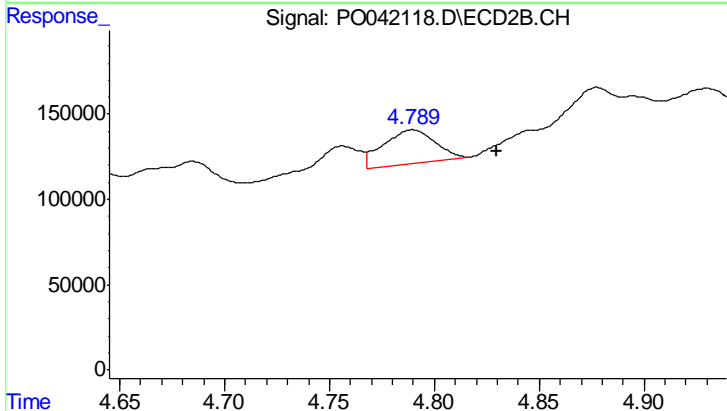
#2 Decachlorobiphenyl

R.T.: 8.159 min
 Delta R.T.: -0.003 min
 Response: 3633494
 Conc: 10.16 ng/ml

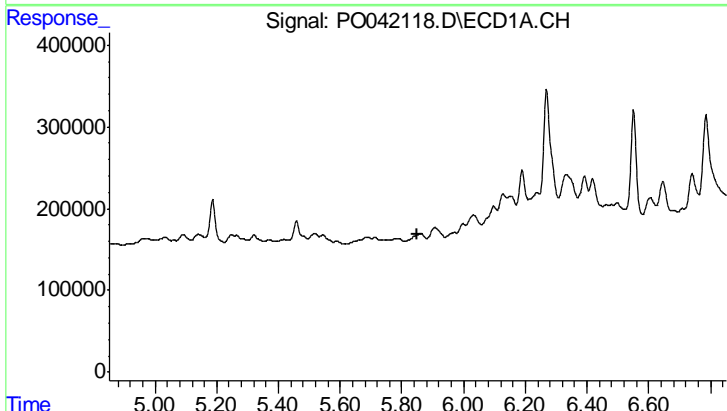


#6 AR-1016-4
 R.T.: 0.000 min
 Exp R.T.: 5.715 min
 Response: 0
 Conc: N.D.

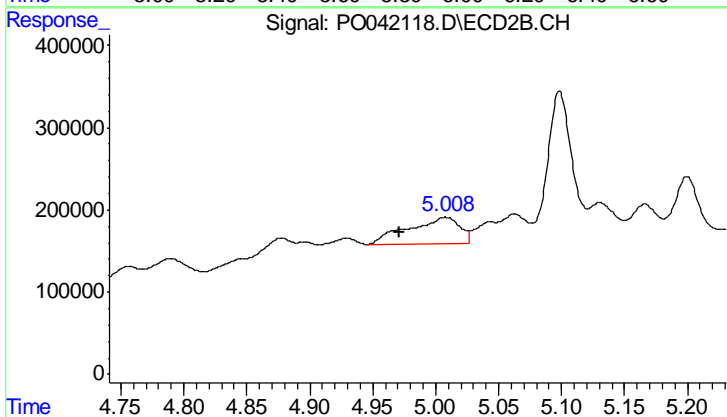
Instrument :
 ECD_O
 ClientSampleId :
 CHRT-27166



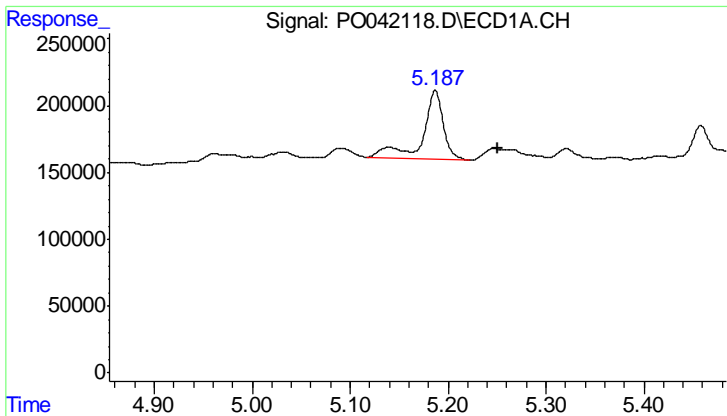
#6 AR-1016-4
 R.T.: 4.789 min
 Delta R.T.: -0.041 min
 Response: 341458
 Conc: 36.64 ng/ml



#7 AR-1016-5
 R.T.: 0.000 min
 Exp R.T.: 5.852 min
 Response: 0
 Conc: N.D.



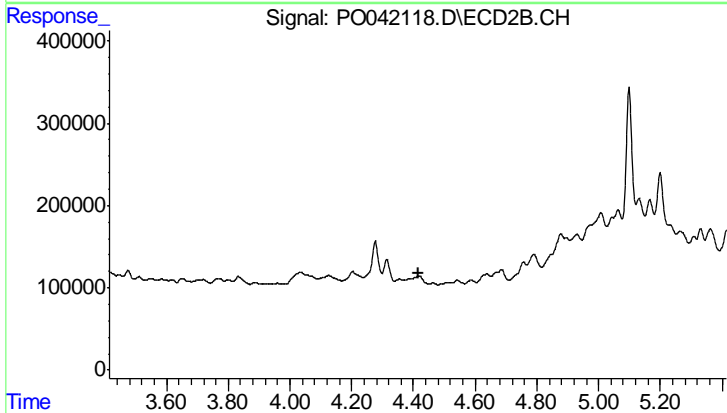
#7 AR-1016-5
 R.T.: 5.008 min
 Delta R.T.: 0.037 min
 Response: 913330
 Conc: 92.12 ng/ml



#12 AR-1232-2

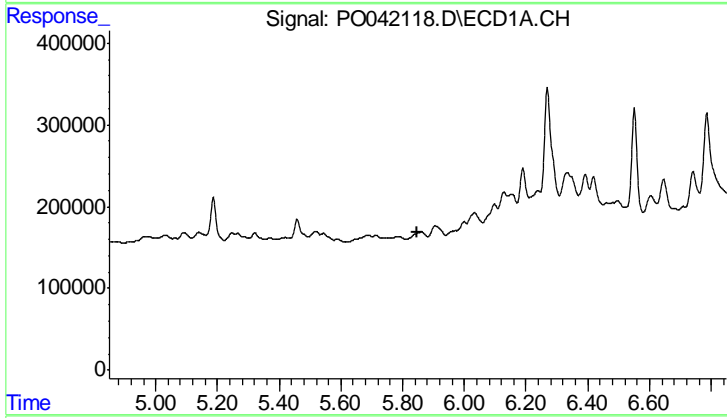
R.T.: 5.187 min
 Delta R.T.: -0.064 min
 Response: 767780
 Conc: 291.74 ng/ml

Instrument :
 ECD_O
 ClientSampled :
 CHRT-27166



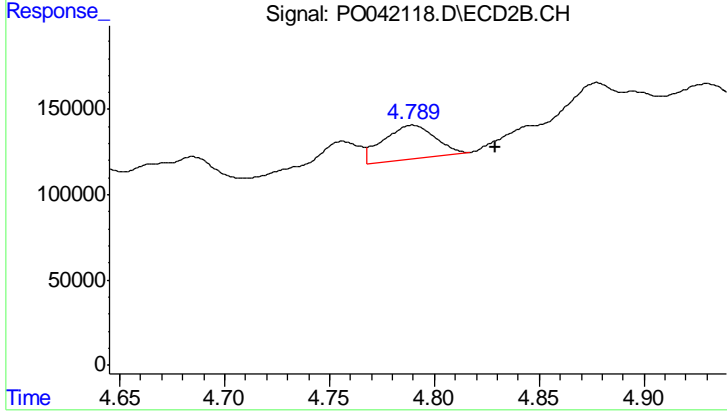
#12 AR-1232-2

R.T.: 0.000 min
 Exp R.T.: 4.415 min
 Response: 0
 Conc: N.D.



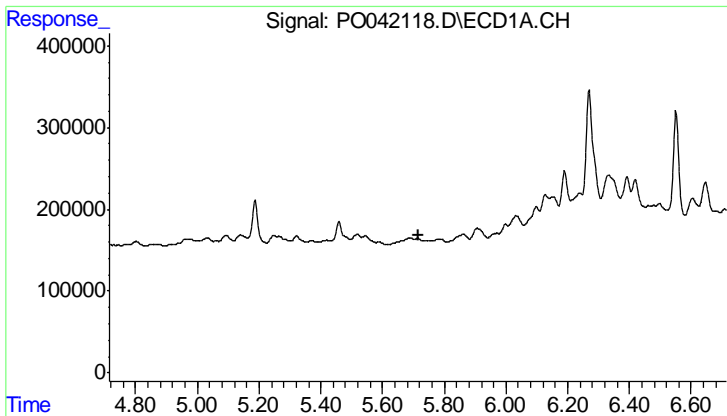
#20 AR-1242-5

R.T.: 0.000 min
 Exp R.T.: 5.850 min
 Response: 0
 Conc: N.D.



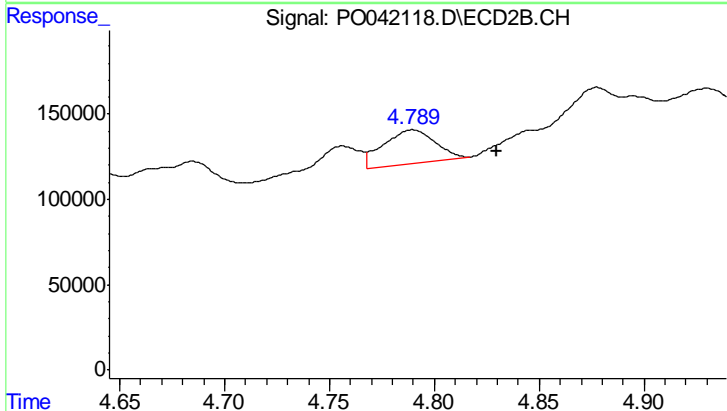
#20 AR-1242-5

R.T.: 4.789 min
 Delta R.T.: -0.040 min
 Response: 341458
 Conc: 59.05 ng/ml

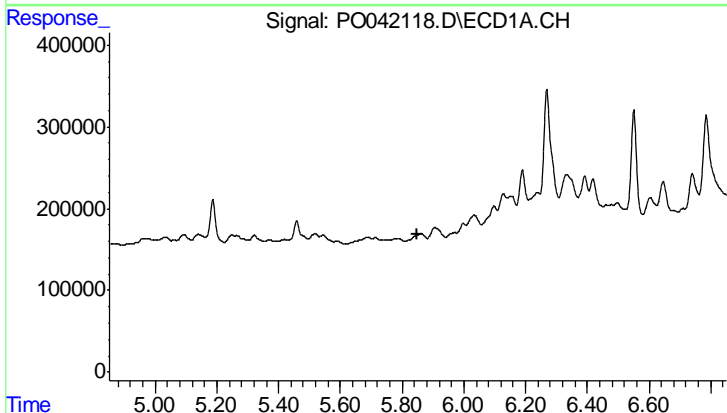


#21 AR-1248-1
 R.T.: 0.000 min
 Exp R.T.: 5.715 min
 Response: 0
 Conc: N.D.

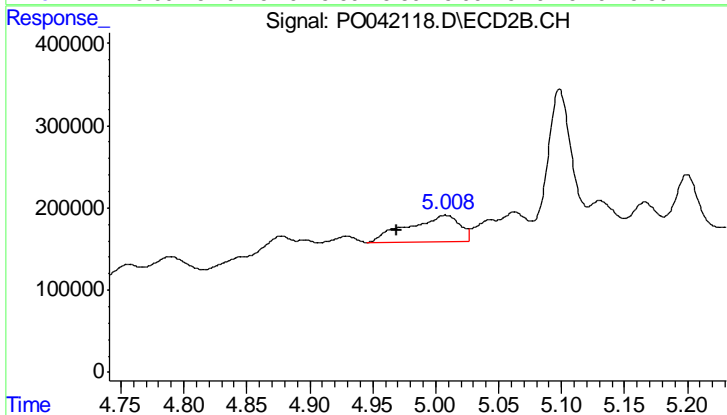
Instrument :
 ECD_O
 ClientSampled :
 CHRT-27166



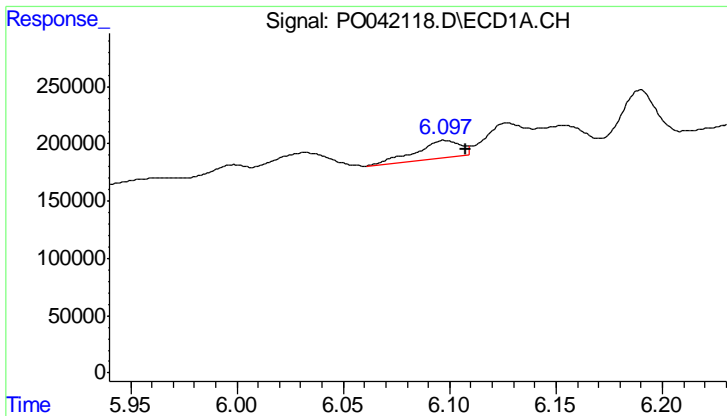
#21 AR-1248-1
 R.T.: 4.789 min
 Delta R.T.: -0.040 min
 Response: 341458
 Conc: 31.23 ng/ml



#22 AR-1248-2
 R.T.: 0.000 min
 Exp R.T.: 5.851 min
 Response: 0
 Conc: N.D.



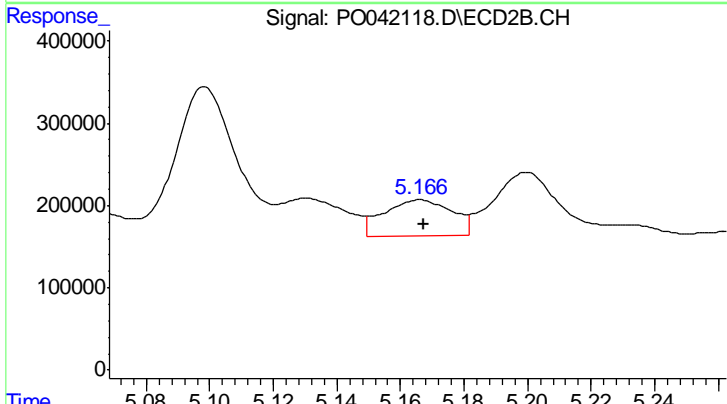
#22 AR-1248-2
 R.T.: 5.008 min
 Delta R.T.: 0.038 min
 Response: 913330
 Conc: 93.93 ng/ml



#23 AR-1248-3

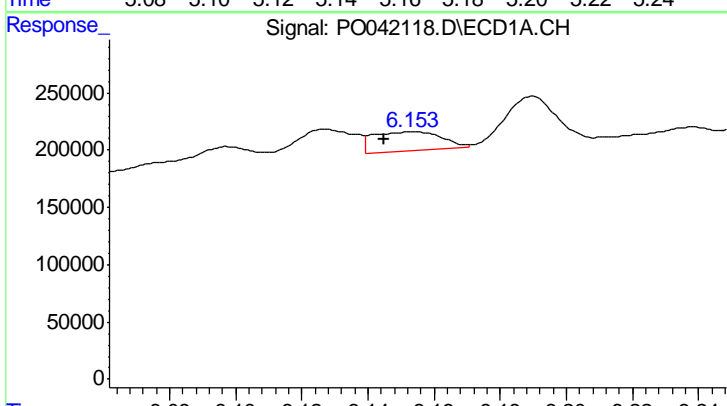
R.T.: 6.097 min
 Delta R.T.: -0.010 min
 Response: 218041
 Conc: 23.84 ng/ml

Instrument :
 ECD_O
 ClientSampled :
 CHRT-27166



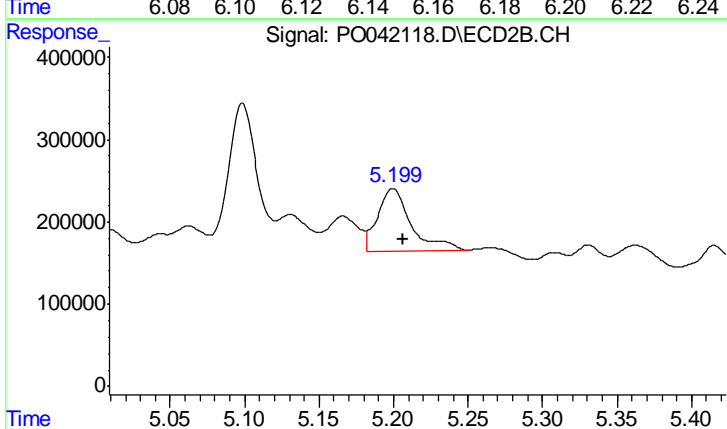
#23 AR-1248-3

R.T.: 5.166 min
 Delta R.T.: -0.001 min
 Response: 649850
 Conc: 38.32 ng/ml



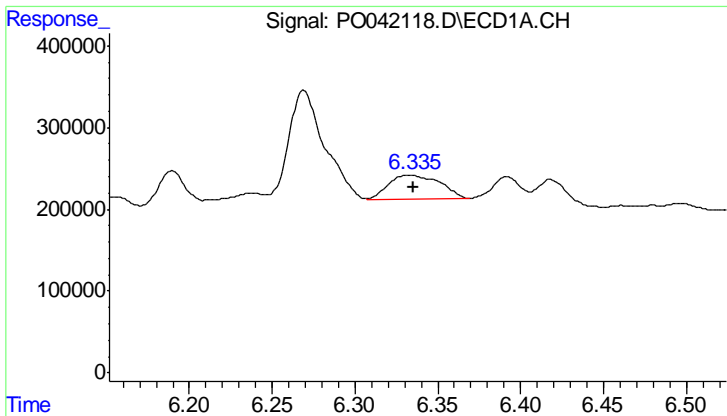
#24 AR-1248-4

R.T.: 6.154 min
 Delta R.T.: 0.009 min
 Response: 237893
 Conc: 26.55 ng/ml



#24 AR-1248-4

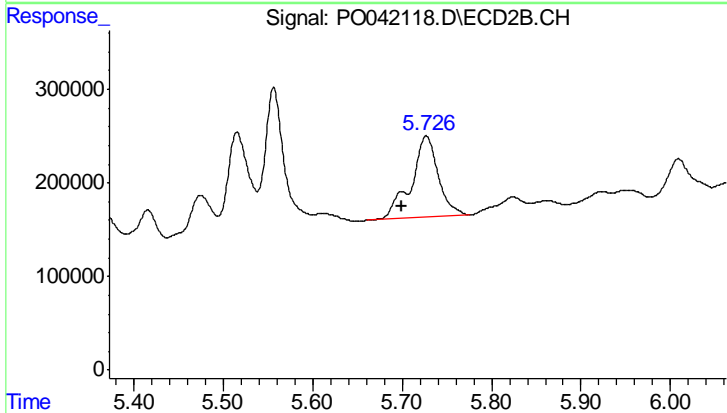
R.T.: 5.200 min
 Delta R.T.: -0.007 min
 Response: 1195336
 Conc: 88.53 ng/ml



#25 AR-1248-5

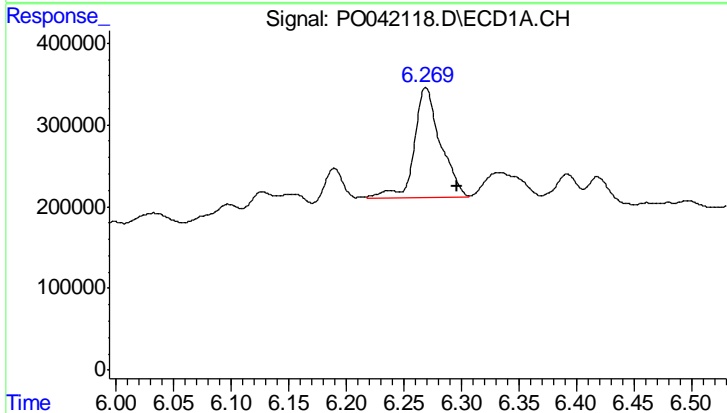
R.T.: 6.335 min
 Delta R.T.: 0.000 min
 Response: 628032
 Conc: 105.13 ng/ml

Instrument :
 ECD_O
 ClientSampled :
 CHRT-27166



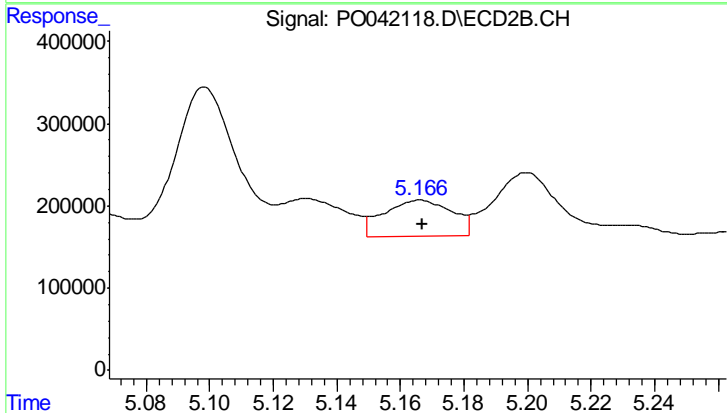
#25 AR-1248-5

R.T.: 5.727 min
 Delta R.T.: 0.027 min
 Response: 1832230
 Conc: 237.78 ng/ml



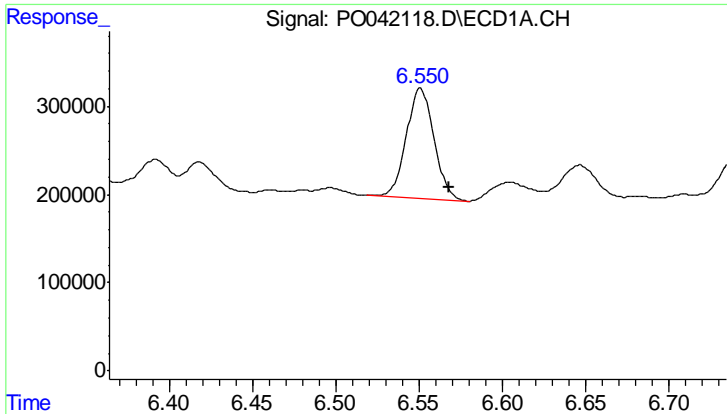
#26 AR-1254-1

R.T.: 6.269 min
 Delta R.T.: -0.027 min
 Response: 2112902
 Conc: 150.10 ng/ml



#26 AR-1254-1

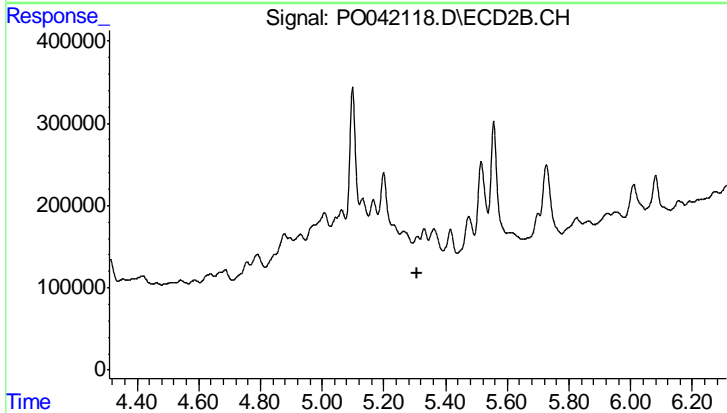
R.T.: 5.166 min
 Delta R.T.: 0.000 min
 Response: 649850
 Conc: 35.13 ng/ml



#27 AR-1254-2

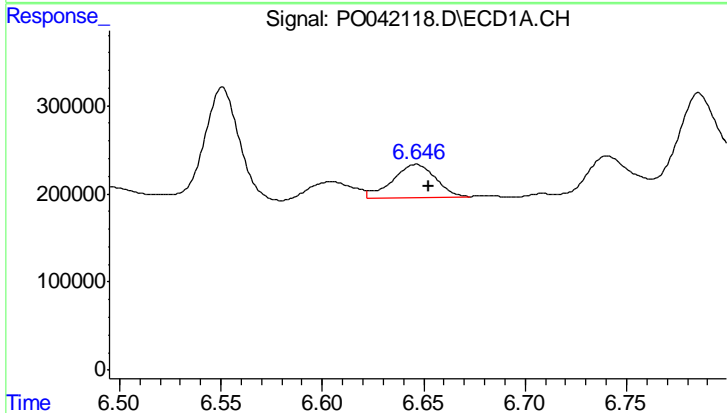
R.T.: 6.551 min
 Delta R.T.: -0.017 min
 Response: 1441294
 Conc: 165.72 ng/ml

Instrument :
 ECD_O
 ClientSampled :
 CHRT-27166



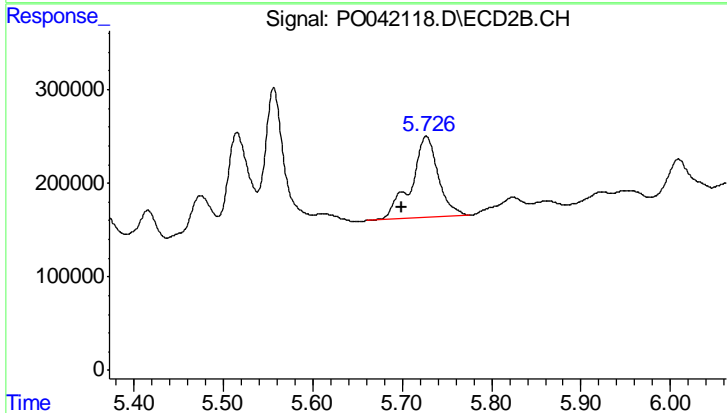
#27 AR-1254-2

R.T.: 0.000 min
 Exp R.T.: 5.310 min
 Response: 0
 Conc: N.D.



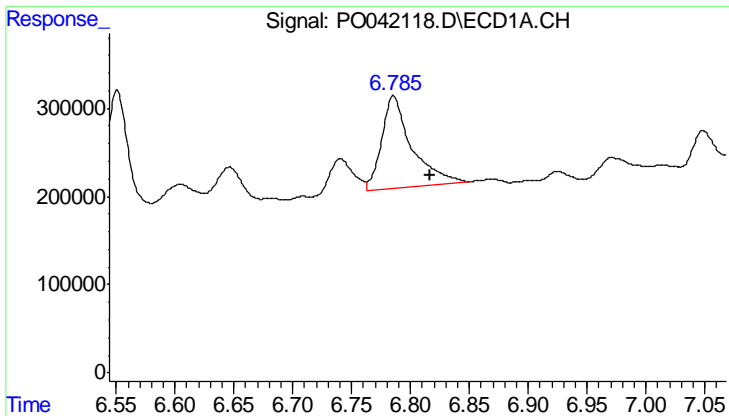
#28 AR-1254-3

R.T.: 6.646 min
 Delta R.T.: -0.006 min
 Response: 558493
 Conc: 36.03 ng/ml



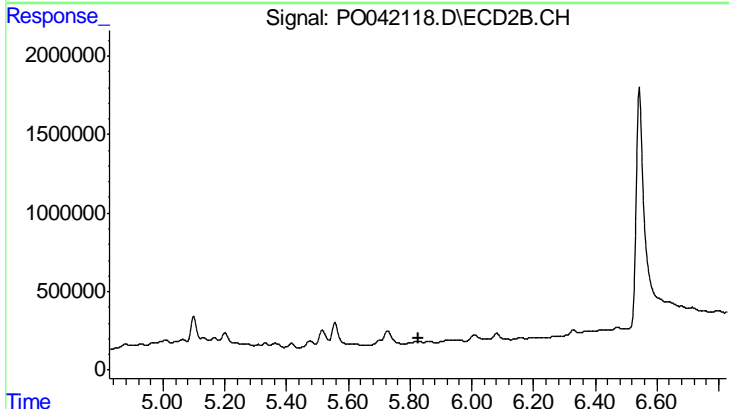
#28 AR-1254-3

R.T.: 5.727 min
 Delta R.T.: 0.027 min
 Response: 1832230
 Conc: 66.60 ng/ml

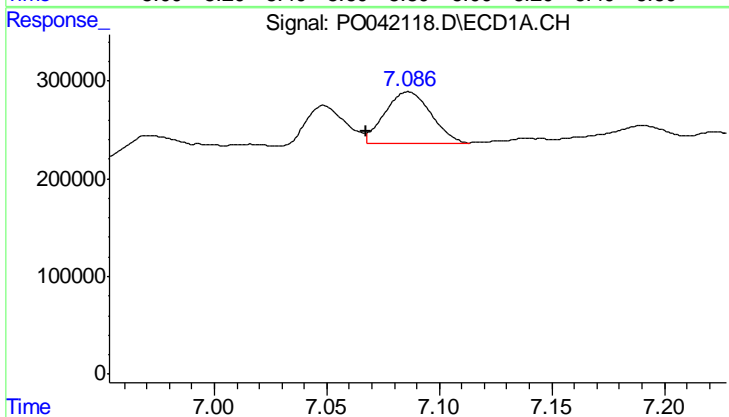


#31 AR-1260-1
 R.T.: 6.786 min
 Delta R.T.: -0.031 min
 Response: 1862033
 Conc: 148.02 ng/ml

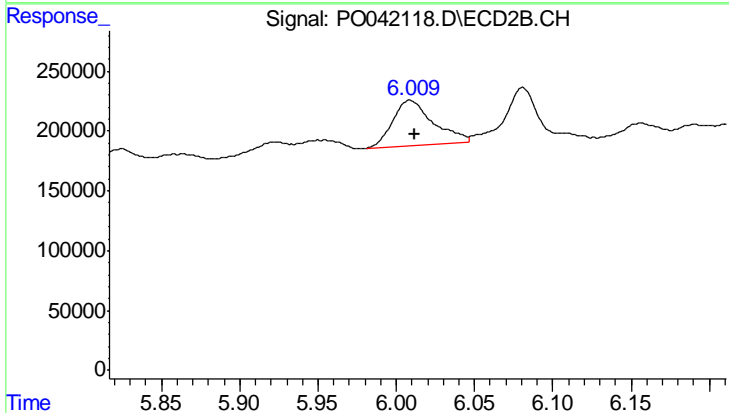
Instrument :
 ECD_O
 ClientSampleId :
 CHRT-27166



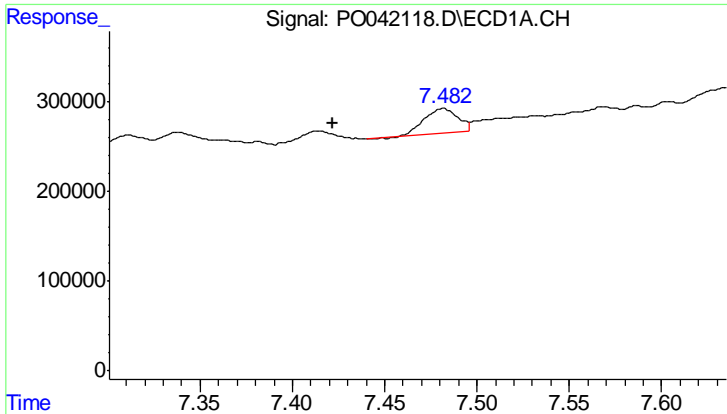
#31 AR-1260-1
 R.T.: 0.000 min
 Exp R.T.: 5.826 min
 Response: 0
 Conc: N.D.



#32 AR-1260-2
 R.T.: 7.086 min
 Delta R.T.: 0.019 min
 Response: 749586
 Conc: 43.08 ng/ml



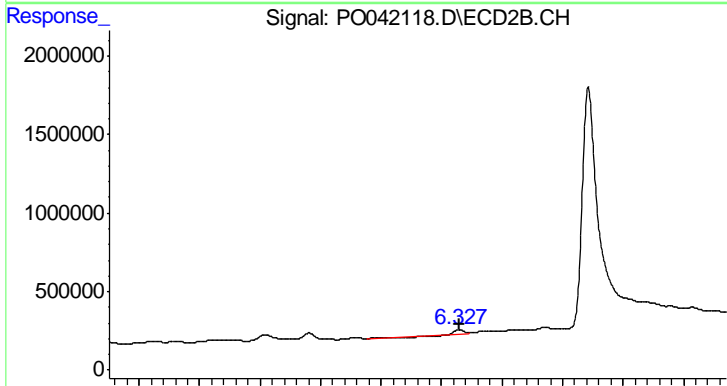
#32 AR-1260-2
 R.T.: 6.009 min
 Delta R.T.: -0.003 min
 Response: 694702
 Conc: 21.99 ng/ml



#34 AR-1260-4

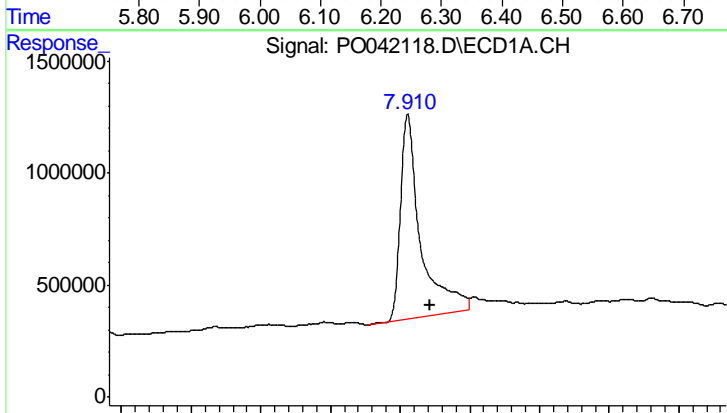
R.T.: 7.482 min
 Delta R.T.: 0.060 min
 Response: 334789
 Conc: 28.46 ng/ml

Instrument :
 ECD_O
 ClientSampleId :
 CHRT-27166



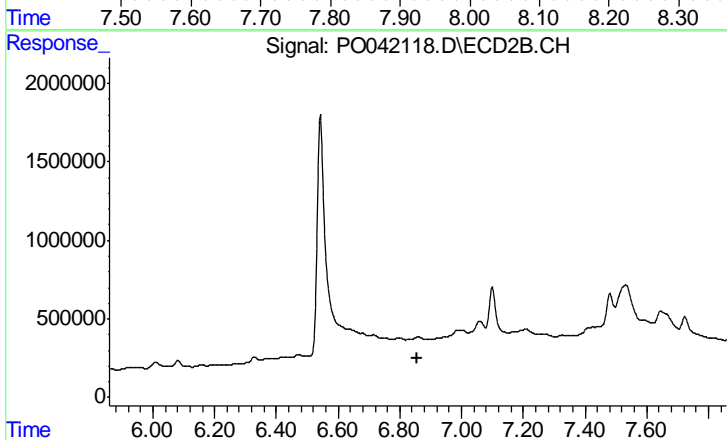
#34 AR-1260-4

R.T.: 6.328 min
 Delta R.T.: 0.000 min
 Response: 61460
 Conc: 1.80 ng/ml



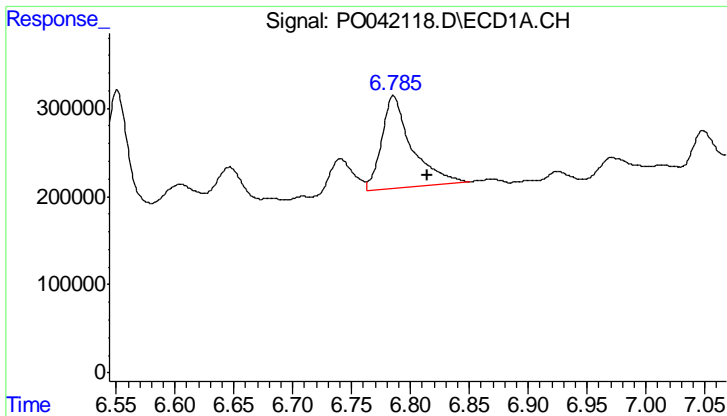
#35 AR-1260-5

R.T.: 7.911 min
 Delta R.T.: -0.032 min
 Response: 18373657
 Conc: 698.55 ng/ml



#35 AR-1260-5

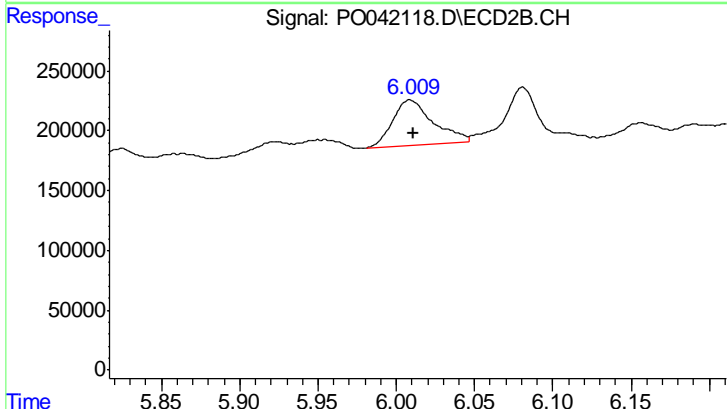
R.T.: 0.000 min
 Exp R.T. : 6.859 min
 Response: 0
 Conc: N.D.



#36 AR-1262-1

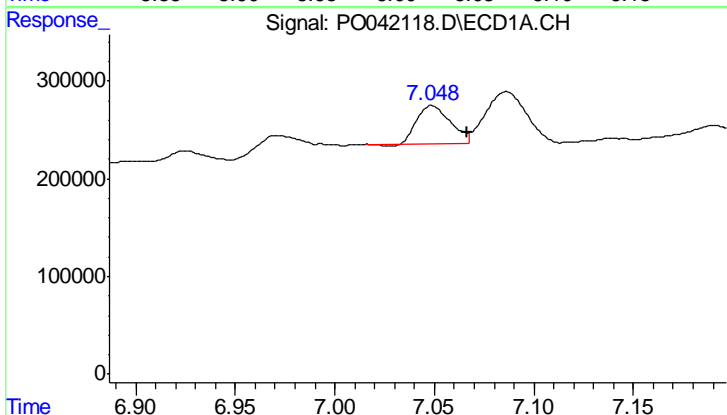
R.T.: 6.786 min
 Delta R.T.: -0.029 min
 Response: 1862033
 Conc: 196.88 ng/ml

Instrument :
 ECD_O
 ClientSampleId :
 CHRT-27166



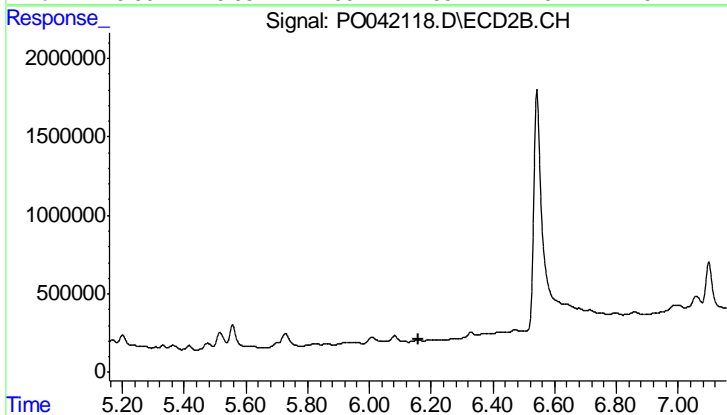
#36 AR-1262-1

R.T.: 6.009 min
 Delta R.T.: -0.002 min
 Response: 694702
 Conc: 31.28 ng/ml



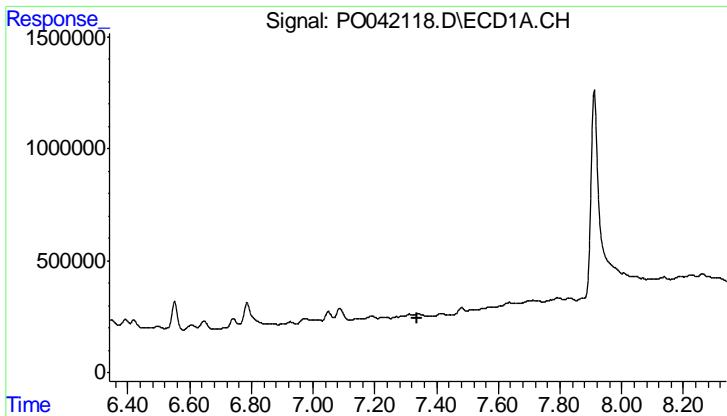
#37 AR-1262-2

R.T.: 7.049 min
 Delta R.T.: -0.018 min
 Response: 462625
 Conc: 39.73 ng/ml



#37 AR-1262-2

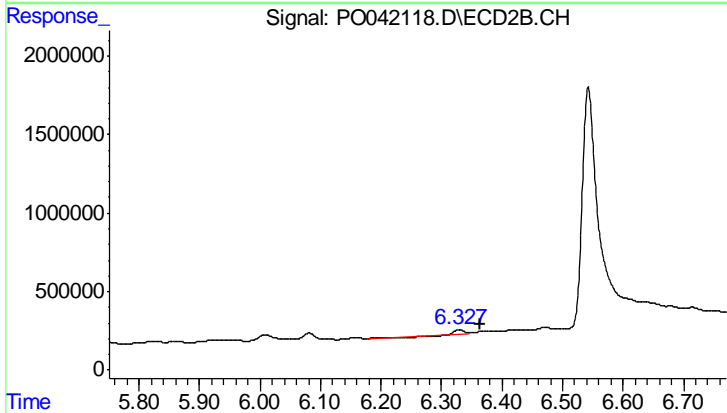
R.T.: 0.000 min
 Exp R.T. : 6.157 min
 Response: 0
 Conc: N.D.



#38 AR-1262-3

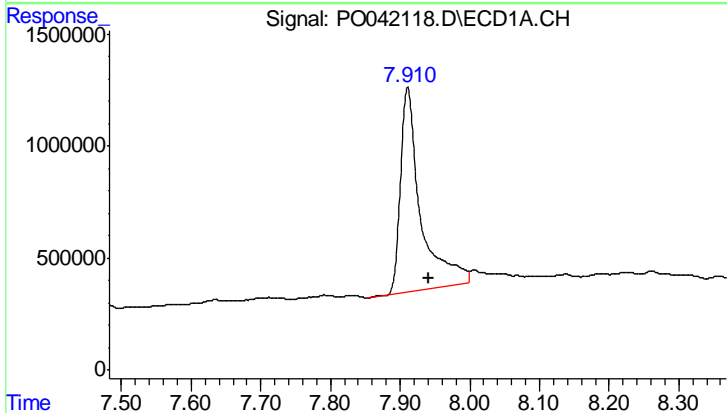
R.T.: 0.000 min
 Exp R.T.: 7.340 min
 Response: 0
 Conc: N.D.

Instrument :
 ECD_O
 ClientSampleId :
 CHRT-27166



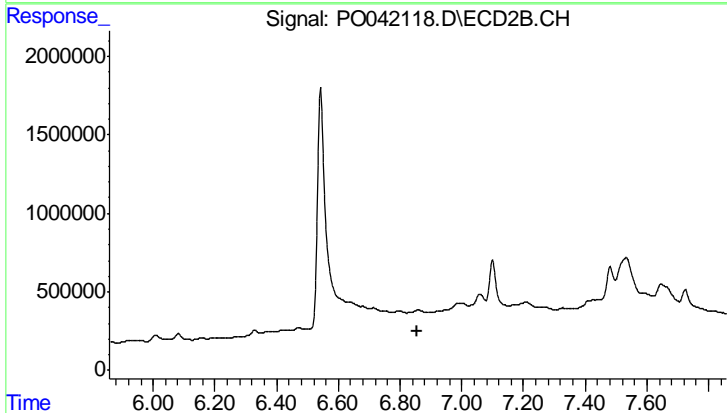
#38 AR-1262-3

R.T.: 6.328 min
 Delta R.T.: -0.036 min
 Response: 61460
 Conc: 1.66 ng/ml



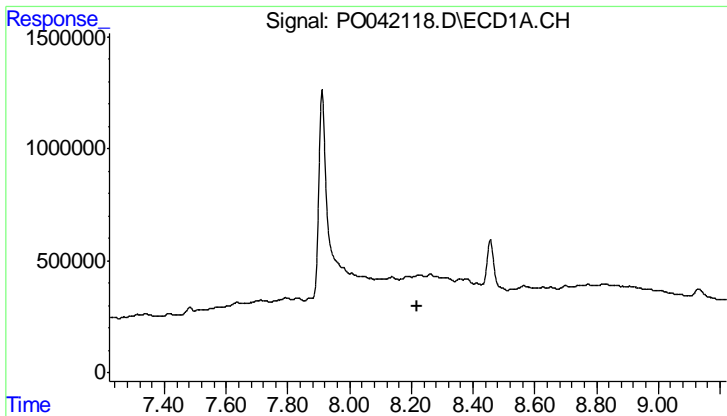
#40 AR-1262-5

R.T.: 7.911 min
 Delta R.T.: -0.030 min
 Response: 18373657
 Conc: 570.76 ng/ml



#40 AR-1262-5

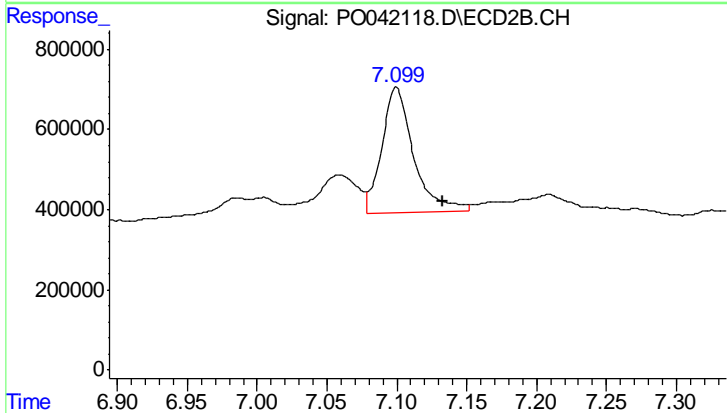
R.T.: 0.000 min
 Exp R.T.: 6.858 min
 Response: 0
 Conc: N.D.



#41 AR-1268-1

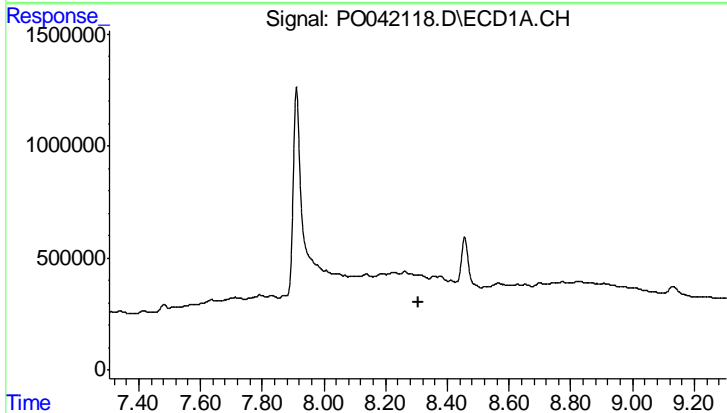
R.T.: 0.000 min
 Exp R.T.: 8.221 min
 Response: 0
 Conc: N.D.

Instrument :
 ECD_O
 ClientSampled :
 CHRT-27166



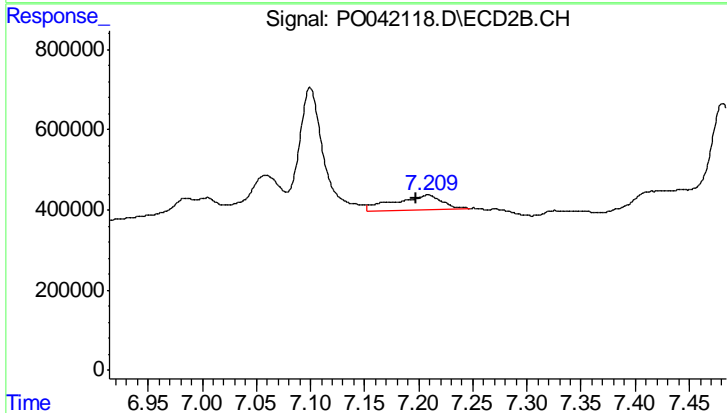
#41 AR-1268-1

R.T.: 7.100 min
 Delta R.T.: -0.033 min
 Response: 5021030
 Conc: 68.51 ng/ml



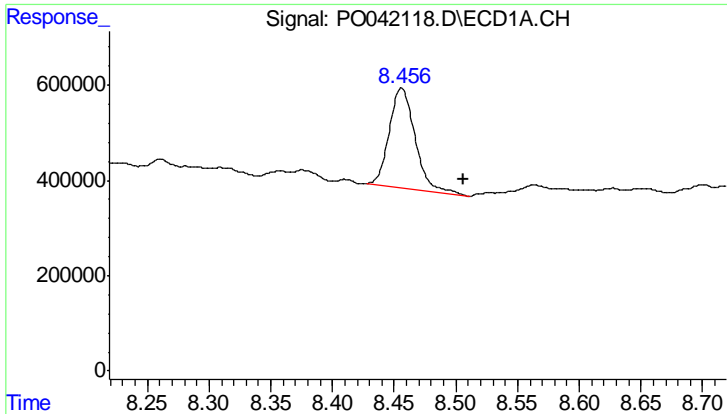
#42 AR-1268-2

R.T.: 0.000 min
 Exp R.T.: 8.305 min
 Response: 0
 Conc: N.D.



#42 AR-1268-2

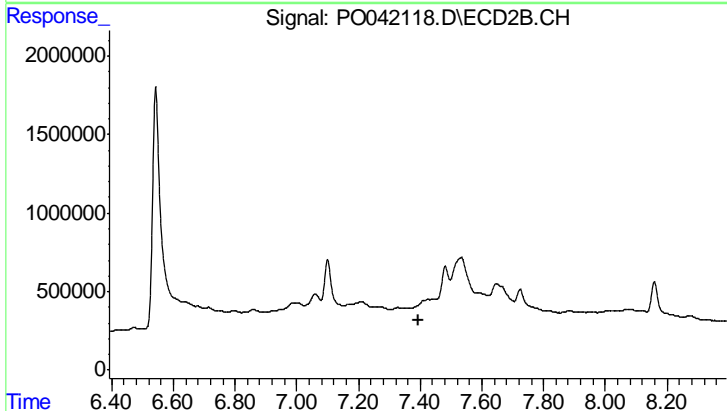
R.T.: 7.209 min
 Delta R.T.: 0.011 min
 Response: 1135645
 Conc: 17.56 ng/ml



#43 AR-1268-3

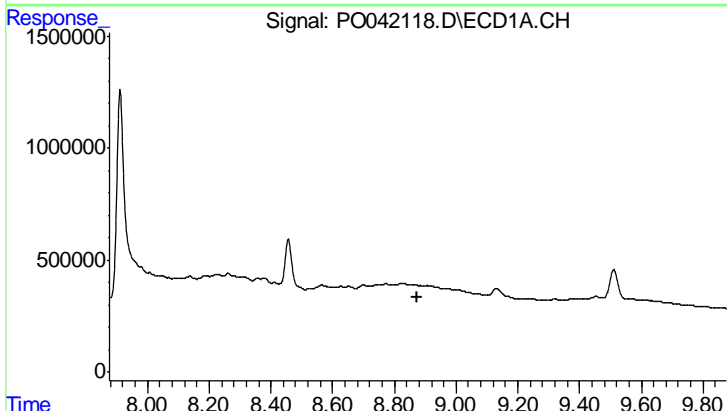
R.T.: 8.456 min
 Delta R.T.: -0.050 min
 Response: 3089425
 Conc: 109.13 ng/ml

Instrument :
 ECD_O
 ClientSampled :
 CHRT-27166



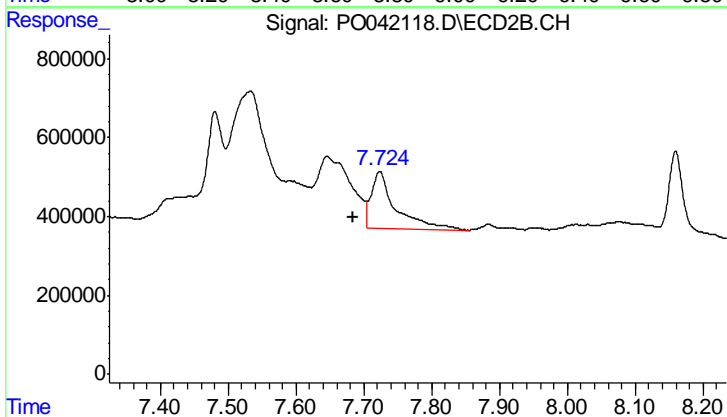
#43 AR-1268-3

R.T.: 0.000 min
 Exp R.T. : 7.393 min
 Response: 0
 Conc: N.D.



#44 AR-1268-4

R.T.: 0.000 min
 Exp R.T. : 8.876 min
 Response: 0
 Conc: N.D.



#44 AR-1268-4

R.T.: 7.724 min
 Delta R.T.: 0.038 min
 Response: 3600319
 Conc: 162.07 ng/ml