

Data Path : Z:\pestpcbsrv\HPCHEM1\ECD_0\Data\P0020820\
 Data File : P0066353.D
 Signal(s) : Signal #1: ECD1A.CH Signal #2: ECD2B.CH
 Acq On : 07 Feb 2020 10:17
 Operator : DD\AJ
 Sample : L1408-06
 Misc :
 ALS Vial : 8 Sample Multiplier: 1

Instrument :
 ECD_0
 ClientSampleId :
 SHORE-RD-PATH-BH-03-B

Integration File signal 1: autoint1.e
 Integration File signal 2: autoint2.e
 Quant Time: Feb 07 23:17:01 2020
 Quant Method : Z:\pestpcbsrv\HPCHEM1\ECD_0\methods\P0020720.M
 Quant Title : GC EXTRACTABLES
 QLast Update : Thu Feb 06 18:14:46 2020
 Response via : Initial Calibration
 Integrator: ChemStation 6890 Scale Mode: Small noise peaks clipped

Volume Inj. : 2 µl
 Signal #1 Phase : ZB-MR1 Signal #2 Phase: ZB-MR2
 Signal #1 Info : 30Mx0.32mmx 0.50µ Signal #2 Info : 30M x 0.32mm x 0.25µm

Compound	RT#1	RT#2	Resp#1	Resp#2	ng/ml	ng/ml

System Monitoring Compounds						
1) SA Tetrachlo...	4.145	3.421	614192	802227	21.774	20.428
2) SA Decachlor...	9.644	8.323	734270	992890	17.780	17.065

Target Compounds

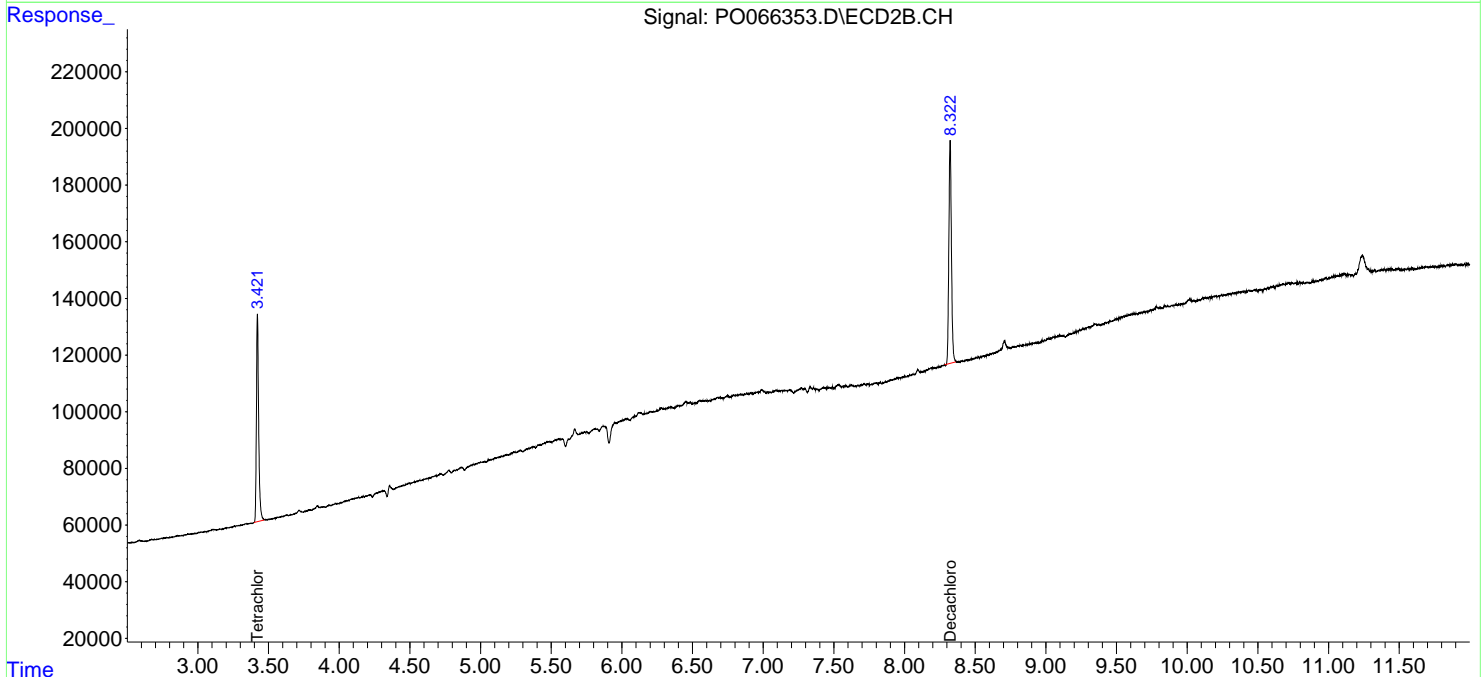
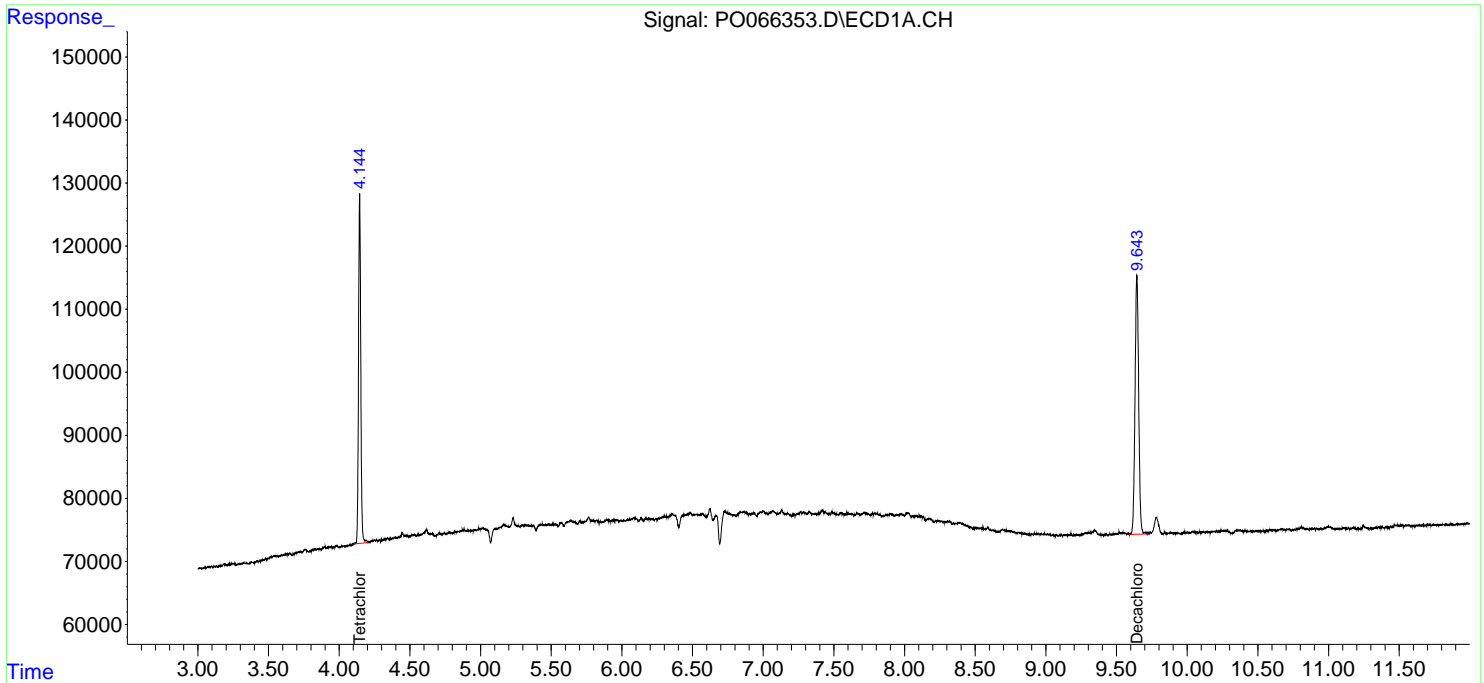
(f)=RT Delta > 1/2 Window (#)=Amounts differ by > 25% (m)=manual int.

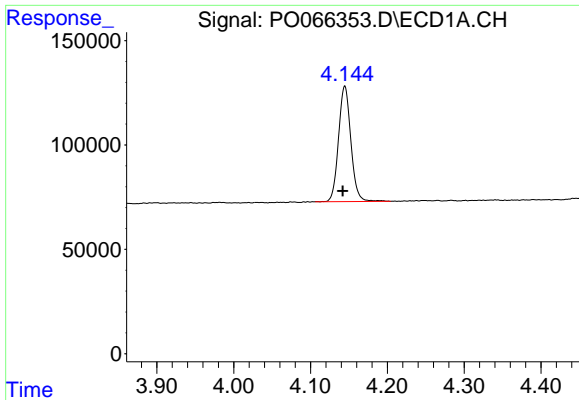
Data Path : Z:\pestpcbsrv\HPCHEM1\ECD_O\Data\P0020820\
 Data File : P0066353.D
 Signal(s) : Signal #1: ECD1A.CH Signal #2: ECD2B.CH
 Acq On : 07 Feb 2020 10:17
 Operator : DD\AJ
 Sample : L1408-06
 Misc :
 ALS Vial : 8 Sample Multiplier: 1

Instrument :
 ECD_O
ClientSampleId :
 SHORE-RD-PATH-BH-03-B

Integration File signal 1: autoint1.e
 Integration File signal 2: autoint2.e
 Quant Time: Feb 07 23:17:01 2020
 Quant Method : Z:\pestpcbsrv\HPCHEM1\ECD_O\methods\P0020720.M
 Quant Title : GC EXTRACTABLES
 QLast Update : Thu Feb 06 18:14:46 2020
 Response via : Initial Calibration
 Integrator: ChemStation 6890 Scale Mode: Small noise peaks clipped

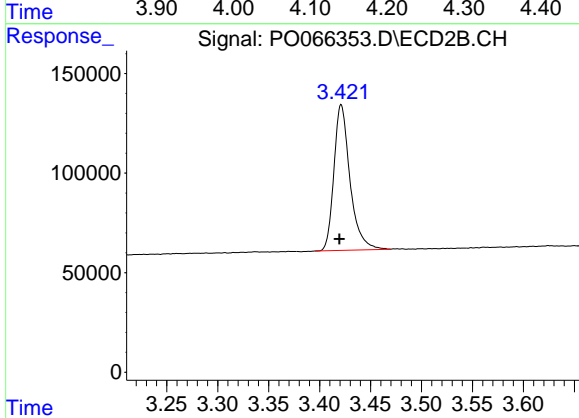
Volume Inj. : 2 µl
 Signal #1 Phase : ZB-MR1 Signal #2 Phase: ZB-MR2
 Signal #1 Info : 30Mx0.32mmx 0.50µ Signal #2 Info : 30M x 0.32mm x 0.25µm



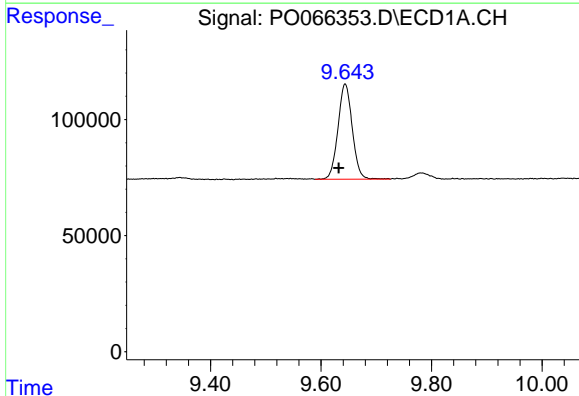


#1 Tetrachloro-m-xylene
 R.T.: 4.145 min
 Delta R.T.: 0.003 min
 Response: 614192
 Conc: 21.77 ng/ml

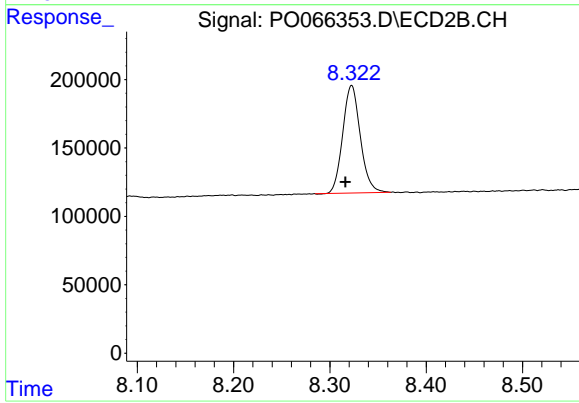
Instrument :
 ECD_O
 ClientSampleId :
 SHORE-RD-PATH-BH-03-B



#1 Tetrachloro-m-xylene
 R.T.: 3.421 min
 Delta R.T.: 0.002 min
 Response: 802227
 Conc: 20.43 ng/ml



#2 Decachlorobiphenyl
 R.T.: 9.644 min
 Delta R.T.: 0.012 min
 Response: 734270
 Conc: 17.78 ng/ml



#2 Decachlorobiphenyl
 R.T.: 8.323 min
 Delta R.T.: 0.007 min
 Response: 992890
 Conc: 17.06 ng/ml