

Data Path : Z:\pestpcbsrv\HPCHEM1\ECD_0\Data\P0020820\
 Data File : P0066389.D
 Signal(s) : Signal #1: ECD1A.CH Signal #2: ECD2B.CH
 Acq On : 07 Feb 2020 22:12
 Operator : DD\AJ
 Sample : L1439-02
 Misc :
 ALS Vial : 44 Sample Multiplier: 1

Instrument :
 ECD_0
ClientSampleId :
 HAM-SB-BCD-0-5

Manual Integrations
APPROVED
 mohammad
 2/11/2020 3:48:21 PM

Integration File signal 1: autoint1.e
 Integration File signal 2: autoint2.e
 Quant Time: Feb 07 23:31:31 2020
 Quant Method : Z:\pestpcbsrv\HPCHEM1\ECD_0\methods\P0020720.M
 Quant Title : GC EXTRACTABLES
 QLast Update : Thu Feb 06 18:14:46 2020
 Response via : Initial Calibration
 Integrator: ChemStation 6890 Scale Mode: Small noise peaks clipped

Volume Inj. : 2 µl
 Signal #1 Phase : ZB-MR1 Signal #2 Phase: ZB-MR2
 Signal #1 Info : 30Mx0.32mmx 0.50µ Signal #2 Info : 30M x 0.32mm x 0.25µm

Compound	RT#1	RT#2	Resp#1	Resp#2	ng/ml	ng/ml

System Monitoring Compounds						
1) SA Tetrachlo...	4.143	3.421	891161	1112812	31.593m	28.337
2) SA Decachlor...	9.635	8.317	864618	1095855	20.937	18.835
Target Compounds						
26) L6 AR-1254-1	6.136	5.268	126502	228985	86.974	82.088
27) L6 AR-1254-2	6.352	5.411	262124	133419	106.738m	51.088 #
28) L6 AR-1254-3	6.718	5.808	430149	190108	159.738m	44.643m#
29) L6 AR-1254-4	6.996	6.034	132055	139588	57.197m	45.549m
30) L6 AR-1254-5	7.412	6.447	159823	226474	68.013m	51.495

(f)=RT Delta > 1/2 Window (#)=Amounts differ by > 25% (m)=manual int.

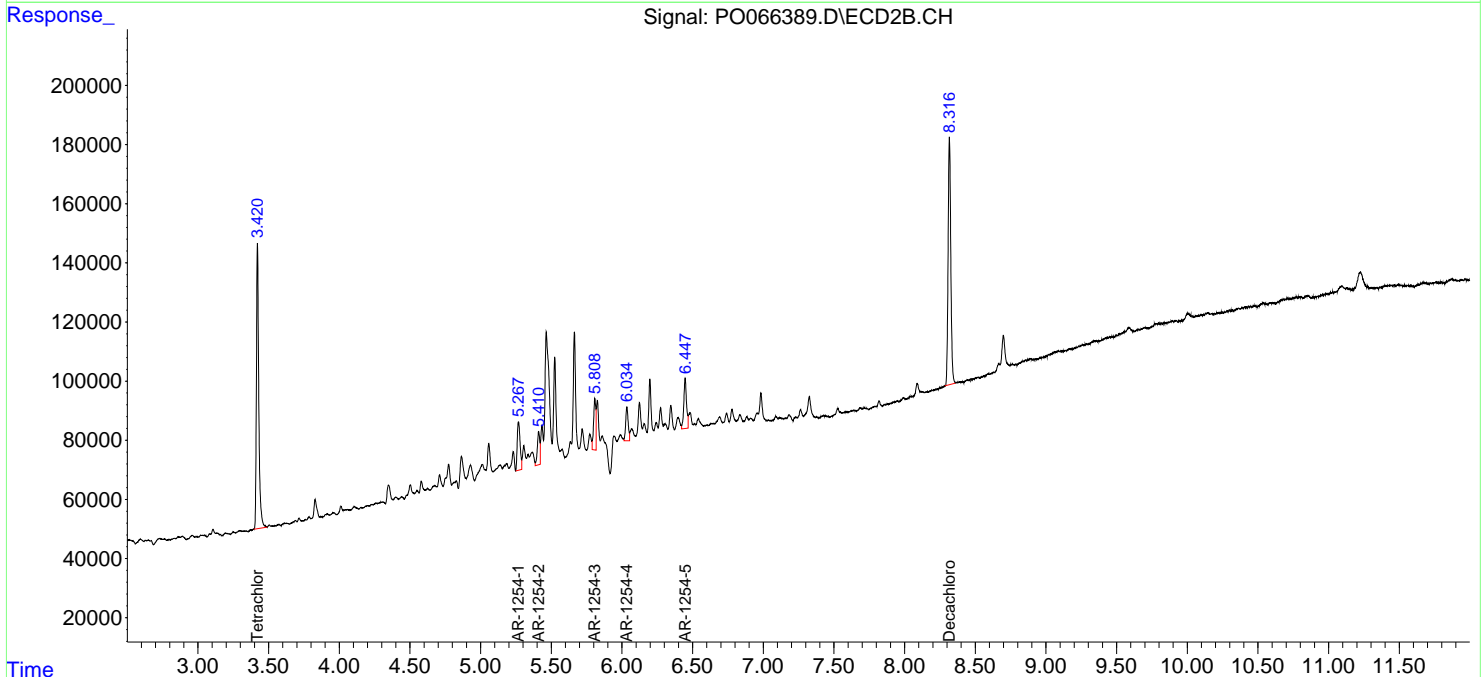
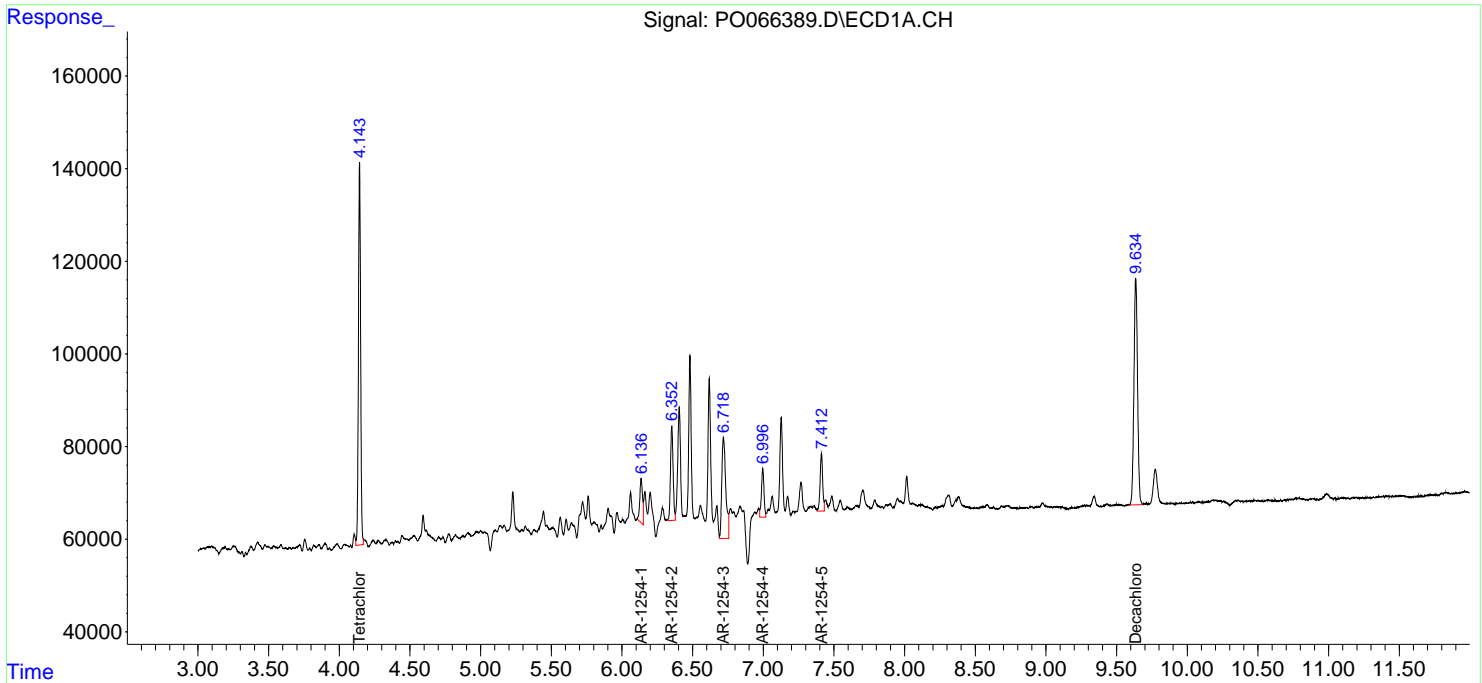
Data Path : Z:\pestpcbsrv\HPCHEM1\ECD_O\Data\PO020820\
 Data File : PO066389.D
 Signal(s) : Signal #1: ECD1A.CH Signal #2: ECD2B.CH
 Acq On : 07 Feb 2020 22:12
 Operator : DD\AJ
 Sample : L1439-02
 Misc :
 ALS Vial : 44 Sample Multiplier: 1

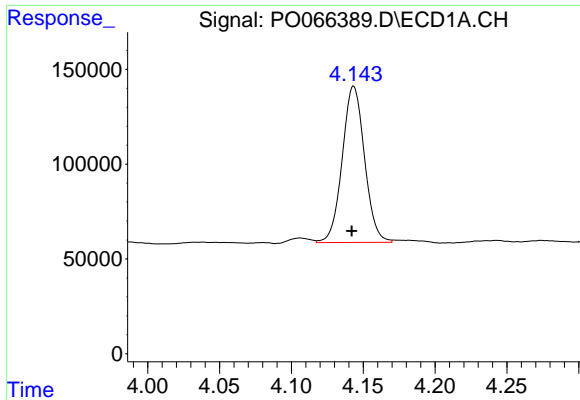
Instrument :
 ECD_O
ClientSampled :
 HAM-SB-BCD-0-5

Manual Integrations
APPROVED
 mohammad
 2/11/2020 3:48:21 PM

Integration File signal 1: autoint1.e
 Integration File signal 2: autoint2.e
 Quant Time: Feb 07 23:31:31 2020
 Quant Method : Z:\pestpcbsrv\HPCHEM1\ECD_O\methods\PO020720.M
 Quant Title : GC EXTRACTABLES
 QLast Update : Thu Feb 06 18:14:46 2020
 Response via : Initial Calibration
 Integrator: ChemStation 6890 Scale Mode: Small noise peaks clipped

Volume Inj. : 2 µl
 Signal #1 Phase : ZB-MR1 Signal #2 Phase: ZB-MR2
 Signal #1 Info : 30Mx0.32mmx 0.50µ Signal #2 Info : 30M x 0.32mm x 0.25µm

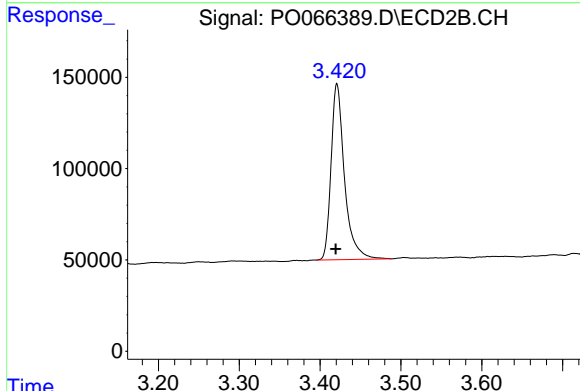




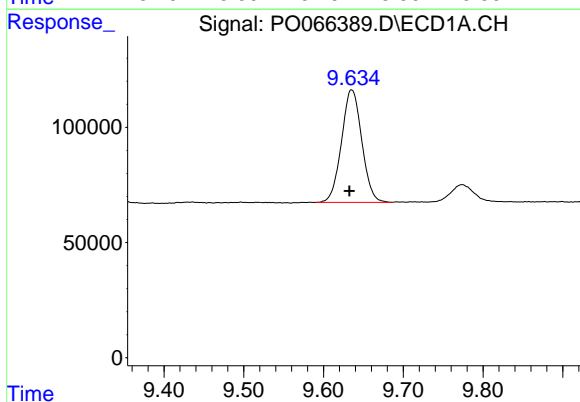
#1 Tetrachloro-m-xylene
 R.T.: 4.143 min
 Delta R.T.: 0.000 min
 Response: 891161
 Conc: 31.59 ng/ml m

Instrument :
 ECD_O
 ClientSampleId :
 HAM-SB-BCD-0-5

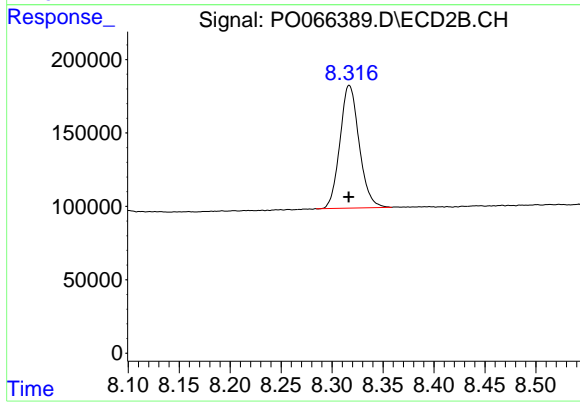
Manual Integrations
 APPROVED
 mohammad
 2/11/2020 3:48:21 PM



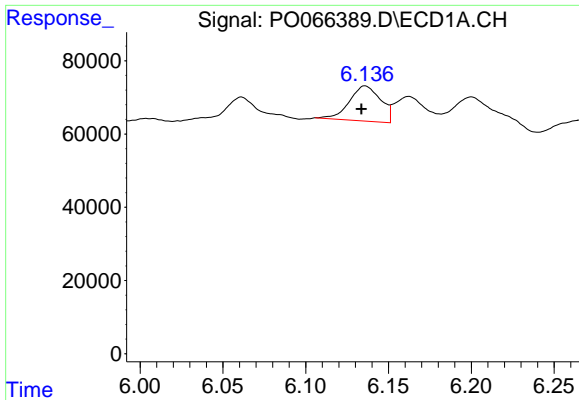
#1 Tetrachloro-m-xylene
 R.T.: 3.421 min
 Delta R.T.: 0.001 min
 Response: 1112812
 Conc: 28.34 ng/ml



#2 Decachlorobiphenyl
 R.T.: 9.635 min
 Delta R.T.: 0.003 min
 Response: 864618
 Conc: 20.94 ng/ml



#2 Decachlorobiphenyl
 R.T.: 8.317 min
 Delta R.T.: 0.000 min
 Response: 1095855
 Conc: 18.83 ng/ml

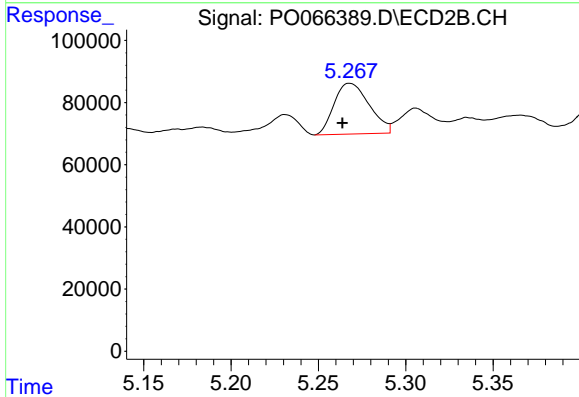


#26 AR-1254-1

R.T.: 6.136 min
 Delta R.T.: 0.002 min
 Response: 126502
 Conc: 86.97 ng/ml

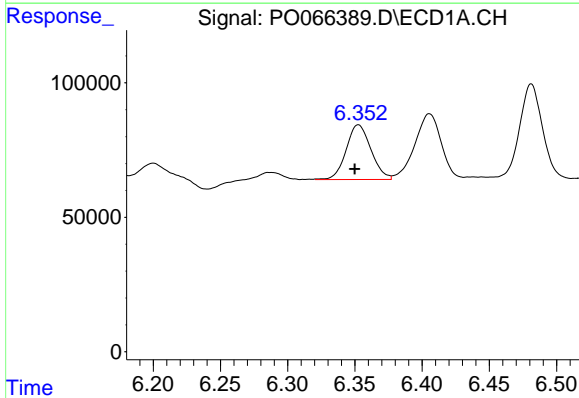
Instrument :
 ECD_O
ClientSampled :
 HAM-SB-BCD-0-5

Manual Integrations
APPROVED
 mohammad
 2/11/2020 3:48:21 PM



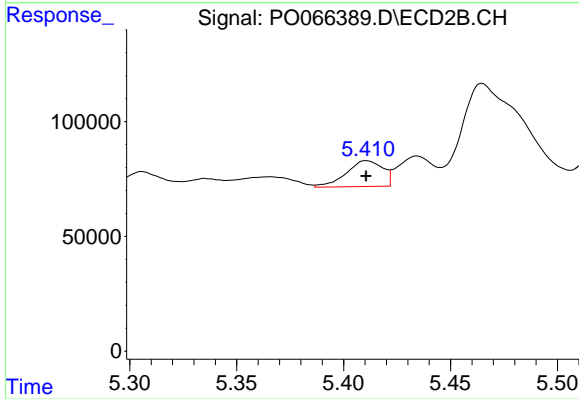
#26 AR-1254-1

R.T.: 5.268 min
 Delta R.T.: 0.004 min
 Response: 228985
 Conc: 82.09 ng/ml



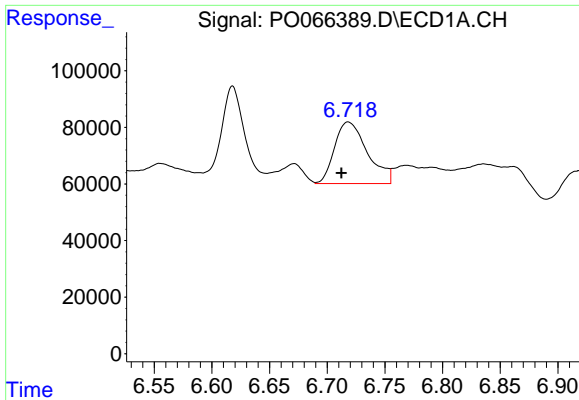
#27 AR-1254-2

R.T.: 6.352 min
 Delta R.T.: 0.003 min
 Response: 262124
 Conc: 106.74 ng/ml m



#27 AR-1254-2

R.T.: 5.411 min
 Delta R.T.: 0.000 min
 Response: 133419
 Conc: 51.09 ng/ml



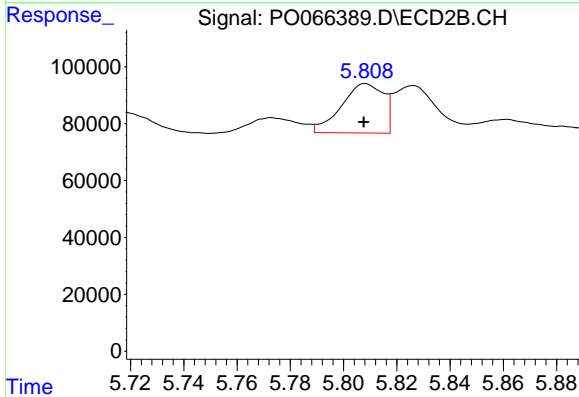
#28 AR-1254-3

R.T.: 6.718 min
 Delta R.T.: 0.005 min
 Response: 430149
 Conc: 159.74 ng/ml m

Instrument :
 ECD_O
 ClientSampleId :
 HAM-SB-BCD-0-5

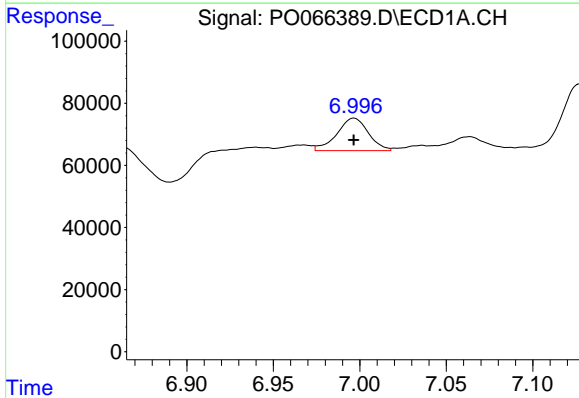
Manual Integrations
 APPROVED

mohammad
 2/11/2020 3:48:21 PM



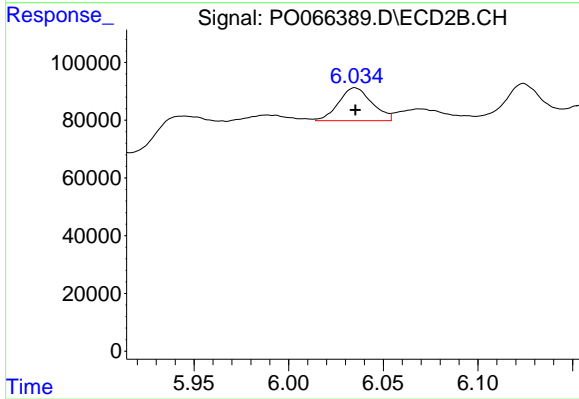
#28 AR-1254-3

R.T.: 5.808 min
 Delta R.T.: 0.000 min
 Response: 190108
 Conc: 44.64 ng/ml m



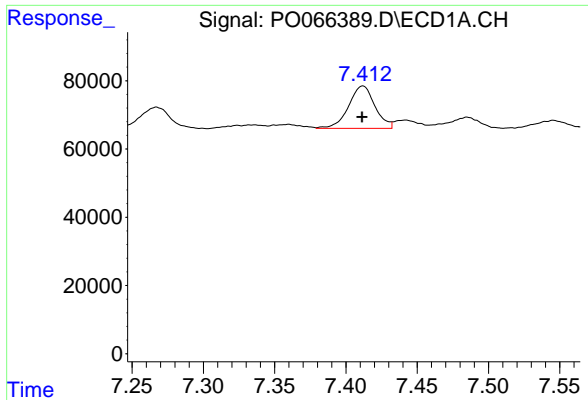
#29 AR-1254-4

R.T.: 6.996 min
 Delta R.T.: 0.000 min
 Response: 132055
 Conc: 57.20 ng/ml m



#29 AR-1254-4

R.T.: 6.034 min
 Delta R.T.: 0.000 min
 Response: 139588
 Conc: 45.55 ng/ml m



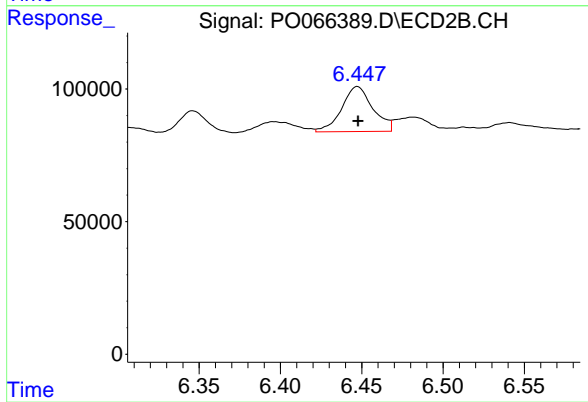
#30 AR-1254-5

R.T.: 7.412 min
Delta R.T.: 0.000 min
Response: 159823
Conc: 68.01 ng/ml m

Instrument :
ECD_O
ClientSampled :
HAM-SB-BCD-0-5

Manual Integrations
APPROVED

mohammad
2/11/2020 3:48:21 PM



#30 AR-1254-5

R.T.: 6.447 min
Delta R.T.: 0.000 min
Response: 226474
Conc: 51.50 ng/ml