

Data Path : P:\HPCHEM1\ECD O\Data\PO020918\  
 Data File : PO042201.D  
 Signal(s) : Signal #1: ECD1A.CH Signal #2: ECD2B.CH  
 Acq On : 06 Feb 2018 9:32  
 Operator : SM/UA  
 Sample : J1430-01MS  
 Misc :  
 ALS Vial : 4 Sample Multiplier: 1

**Instrument :**  
 ECD\_O  
**ClientSampleId :**  
 EPE-125-7A(0-5)MS

**Manual Integrations**  
**APPROVED**  
 ugo  
 2/6/2018 5:42:52 PM

Integration File signal 1: autoint1.e  
 Integration File signal 2: autoint2.e  
 Quant Time: Feb 06 13:21:02 2018  
 Quant Method : P:\HPCHEM1\ECD\_O\PO012318.M  
 Quant Title : GC EXTRACTABLES  
 QLast Update : Tue Jan 23 01:50:31 2018  
 Response via : Initial Calibration  
 Integrator: ChemStation 6890 Scale Mode: Small noise peaks clipped

Volume Inj. : 2 µl  
 Signal #1 Phase : ZB-MR1 Signal #2 Phase: ZB-MR2  
 Signal #1 Info : 30Mx0.32mmx 0.50µ Signal #2 Info : 30M x 0.32mm x 0.25µm

Compound	RT#1	RT#2	Resp#1	Resp#2	nq/ml	nq/ml
-----						
System Monitoring Compounds						
1) SA Tetrachlo...	4.118	3.357	4723500	7381667	24.473	25.429
2) SA Decachlor...	9.513	8.152	3310821	4881606	14.091	13.650
Target Compounds						
3) L1 AR-1016-1	4.986	4.180	1141656	1827229	220.502	243.125
4) L1 AR-1016-2	5.326	4.618	1608471	1652790	224.257	235.359
5) L1 AR-1016-3	5.421	4.657	1272722	2033317	213.571	240.128
6) L1 AR-1016-4	5.708	4.822	1243920	1510610	205.537	162.109m
7) L1 AR-1016-5	5.844	4.961	1096415	1494900	169.735	150.778m
31) L7 AR-1260-1	6.807	5.817	2237079	4013885	177.833	188.034
32) L7 AR-1260-2	7.058	6.002	2828412	6324161	162.558	200.216m
33) L7 AR-1260-3	7.334	6.148	3169365	4645497	157.902	177.987m
34) L7 AR-1260-4	7.412	6.319	1970521	5510505	167.531	161.611m
35) L7 AR-1260-5	7.932	6.850	4009551	7759976	152.439	144.630
-----						

(f)=RT Delta > 1/2 Window (#)=Amounts differ by > 25% (m)=manual int.

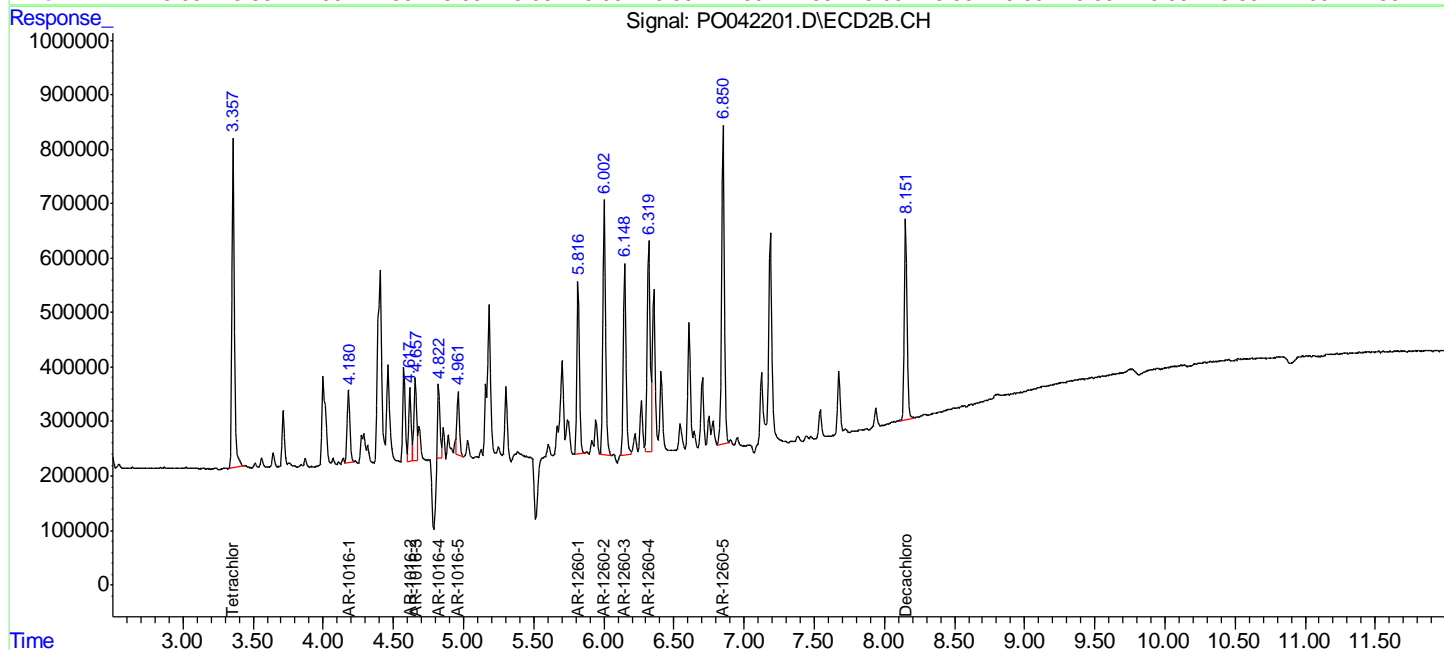
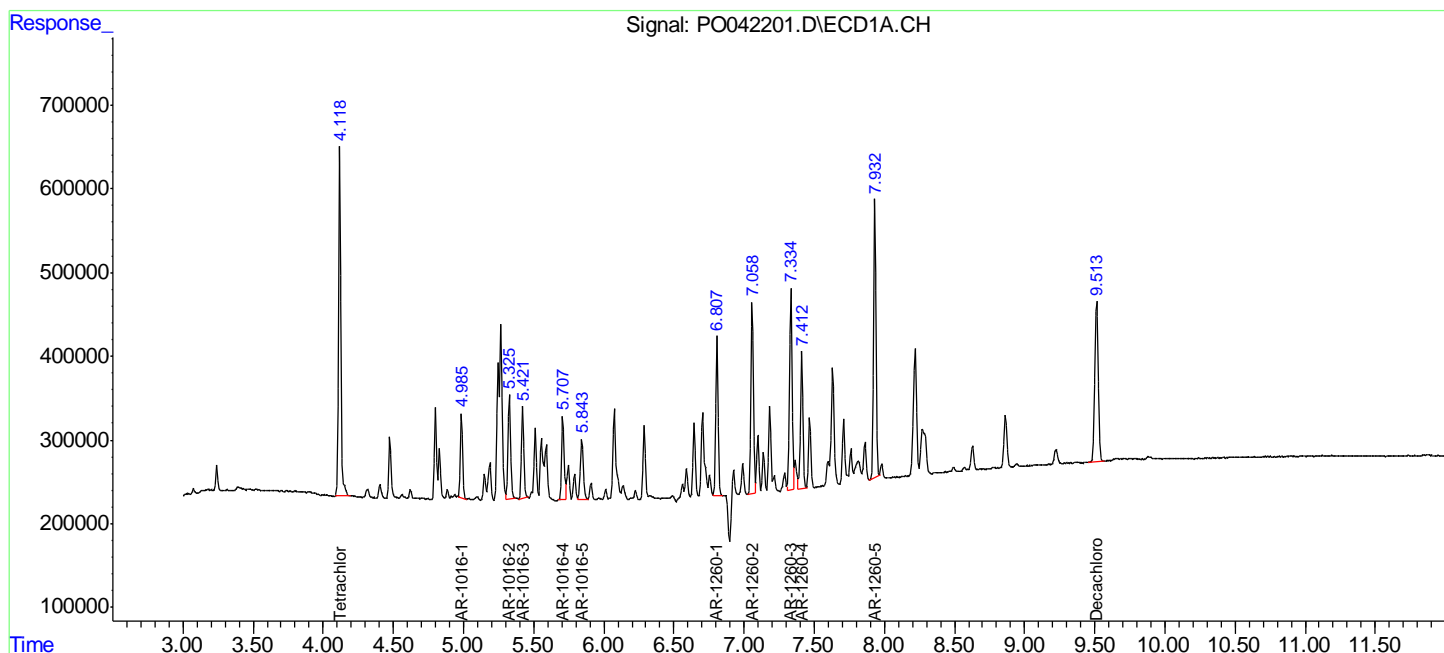
Data Path : P:\HPCHEM1\ECD O\Data\PO020918\  
 Data File : PO042201.D  
 Signal(s) : Signal #1: ECD1A.CH Signal #2: ECD2B.CH  
 Acq On : 06 Feb 2018 9:32  
 Operator : SM/UA  
 Sample : J1430-01MS  
 Misc :  
 ALS Vial : 4 Sample Multiplier: 1

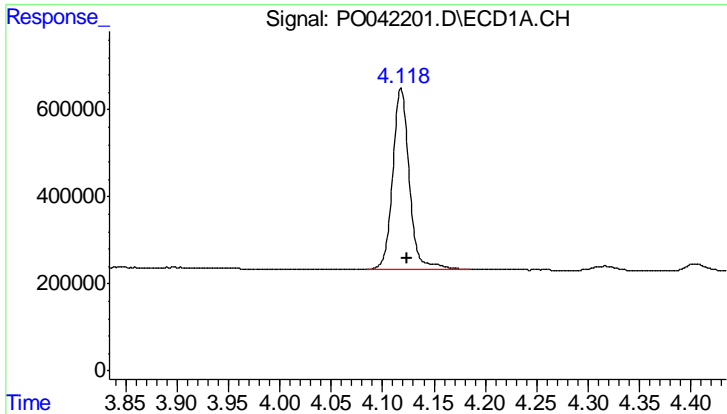
Instrument :  
 ECD\_O  
 Client Sampled :  
 EPE-125-7A(0-5)MS

Manual Integrations  
**APPROVED**  
 ugo  
 2/6/2018 5:42:52 PM

Integration File signal 1: autoint1.e  
 Integration File signal 2: autoint2.e  
 Quant Time: Feb 06 13:21:02 2018  
 Quant Method : P:\HPCHEM1\ECD\_O\PO012318.M  
 Quant Title : GC EXTRACTABLES  
 QLast Update : Tue Jan 23 01:50:31 2018  
 Response via : Initial Calibration  
 Integrator: ChemStation 6890 Scale Mode: Small noise peaks clipped

Volume Inj. : 2 µl  
 Signal #1 Phase : ZB-MR1 Signal #2 Phase: ZB-MR2  
 Signal #1 Info : 30Mx0.32mmx 0.50µ Signal #2 Info : 30M x 0.32mm x 0.25µm



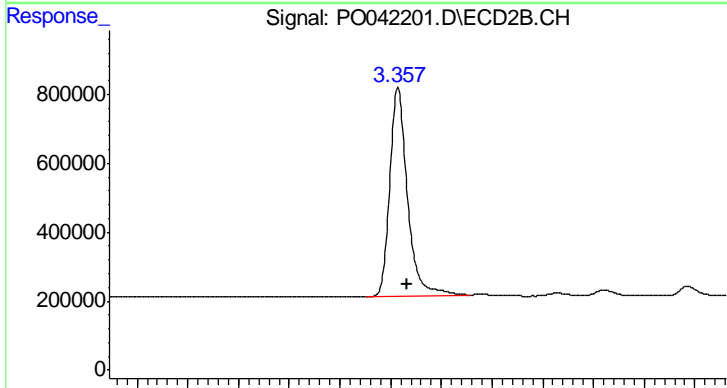


#1 Tetrachloro-m-xylene

R.T.: 4.118 min  
 Delta R.T.: -0.005 min  
 Response: 4723500  
 Conc: 24.47 ng/ml

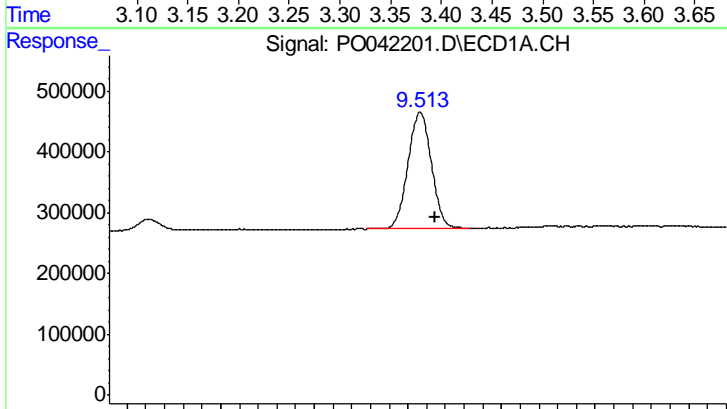
Instrument :  
 ECD\_O  
 ClientSampleId :  
 EPE-125-7A(0-5)MS

Manual Integrations  
 APPROVED  
 ugo  
 2/6/2018 5:42:52 PM



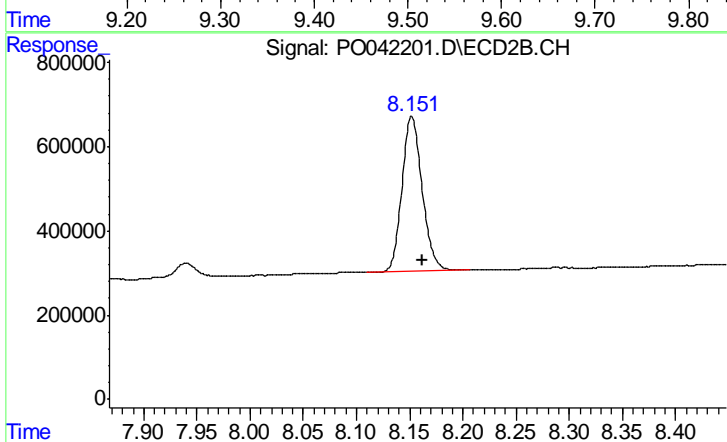
#1 Tetrachloro-m-xylene

R.T.: 3.357 min  
 Delta R.T.: -0.009 min  
 Response: 7381667  
 Conc: 25.43 ng/ml



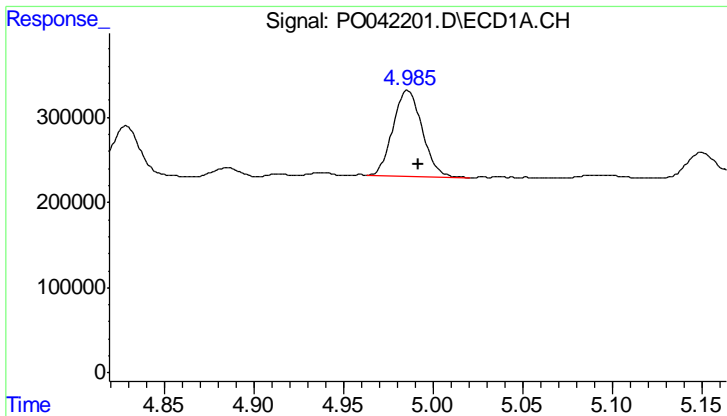
#2 Decachlorobiphenyl

R.T.: 9.513 min  
 Delta R.T.: -0.016 min  
 Response: 3310821  
 Conc: 14.09 ng/ml



#2 Decachlorobiphenyl

R.T.: 8.152 min  
 Delta R.T.: -0.011 min  
 Response: 4881606  
 Conc: 13.65 ng/ml



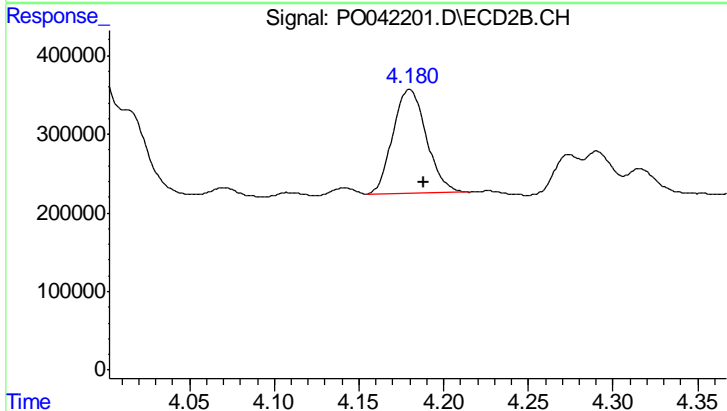
#3 AR-1016-1

R.T.: 4.986 min  
 Delta R.T.: -0.006 min  
 Response: 1141656  
 Conc: 220.50 ng/ml

Instrument :  
 ECD\_O  
 ClientSampleId :  
 EPE-125-7A(0-5)MS

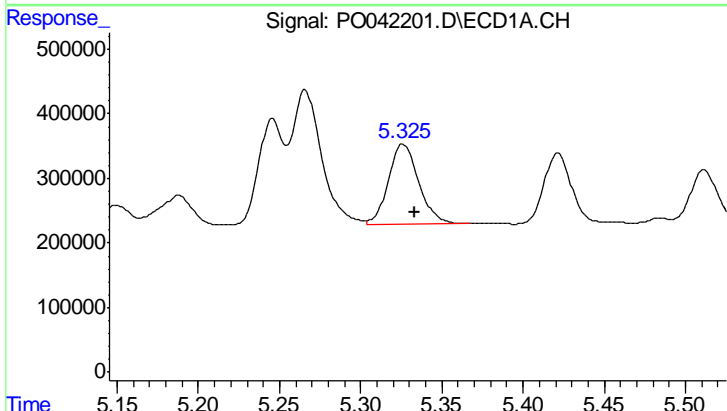
Manual Integrations  
 APPROVED

ugo  
 2/6/2018 5:42:52 PM



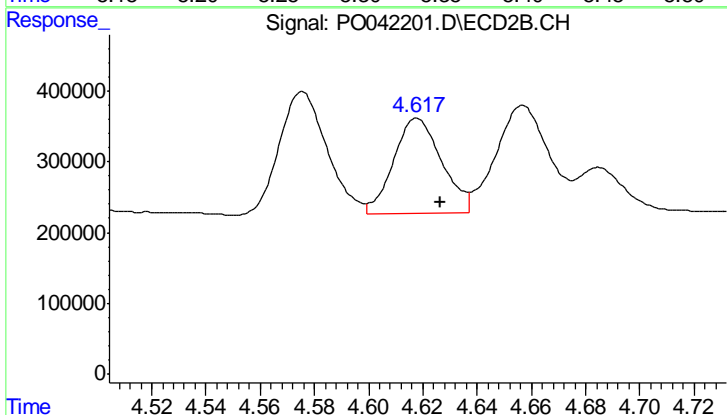
#3 AR-1016-1

R.T.: 4.180 min  
 Delta R.T.: -0.009 min  
 Response: 1827229  
 Conc: 243.13 ng/ml



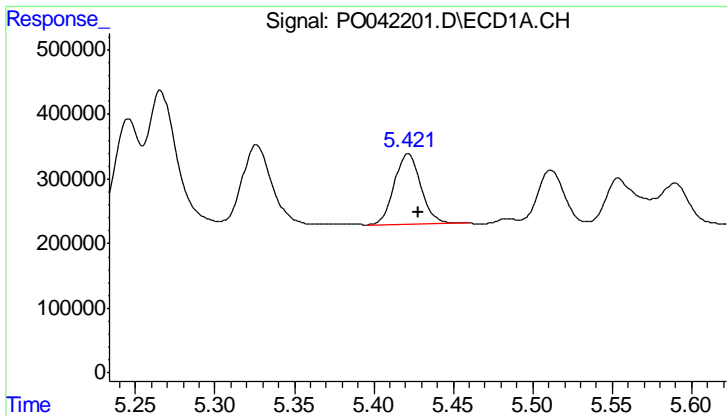
#4 AR-1016-2

R.T.: 5.326 min  
 Delta R.T.: -0.007 min  
 Response: 1608471  
 Conc: 224.26 ng/ml



#4 AR-1016-2

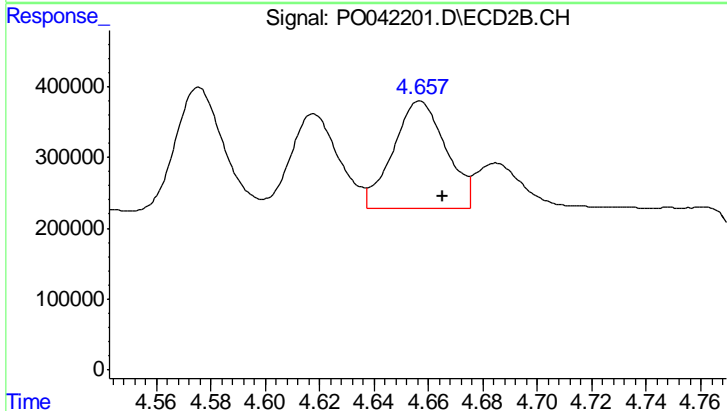
R.T.: 4.618 min  
 Delta R.T.: -0.009 min  
 Response: 1652790  
 Conc: 235.36 ng/ml



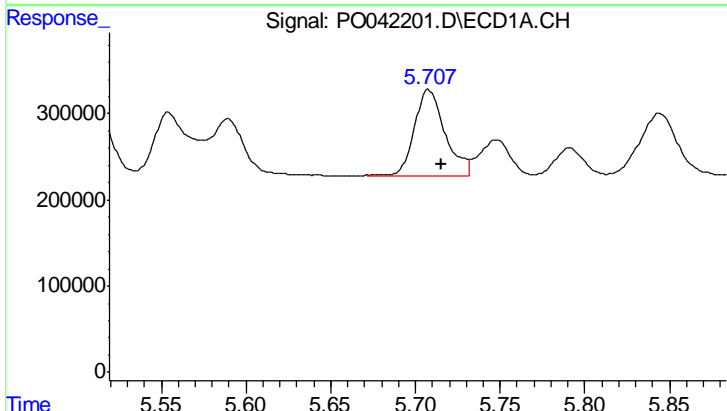
#5 AR-1016-3  
 R.T.: 5.421 min  
 Delta R.T.: -0.007 min  
 Response: 1272722  
 Conc: 213.57 ng/ml

**Instrument :**  
 ECD\_O  
**ClientSampleId :**  
 EPE-125-7A(0-5)MS

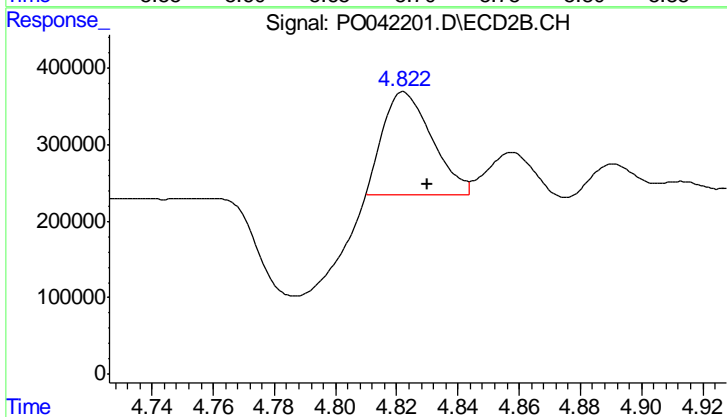
**Manual Integrations**  
**APPROVED**  
 ugo  
 2/6/2018 5:42:52 PM



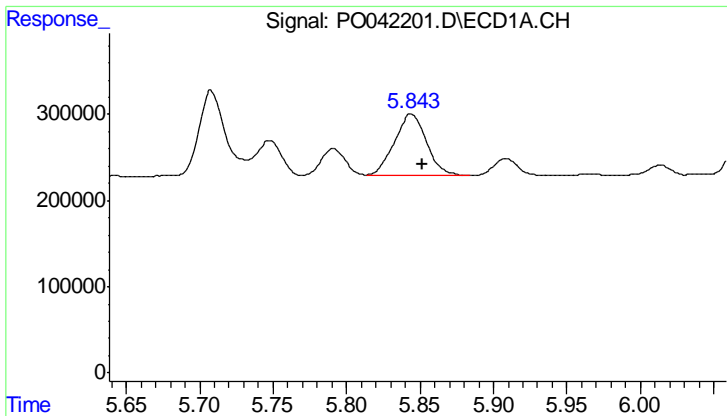
#5 AR-1016-3  
 R.T.: 4.657 min  
 Delta R.T.: -0.008 min  
 Response: 2033317  
 Conc: 240.13 ng/ml



#6 AR-1016-4  
 R.T.: 5.708 min  
 Delta R.T.: -0.008 min  
 Response: 1243920  
 Conc: 205.54 ng/ml



#6 AR-1016-4  
 R.T.: 4.822 min  
 Delta R.T.: -0.008 min  
 Response: 1510610  
 Conc: 162.11 ng/ml m



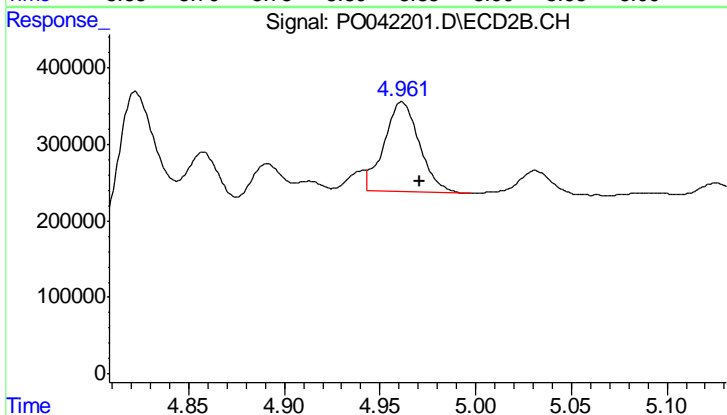
#7 AR-1016-5

R.T.: 5.844 min  
 Delta R.T.: -0.008 min  
 Response: 1096415  
 Conc: 169.74 ng/ml

Instrument :  
 ECD\_O  
 ClientSampleId :  
 EPE-125-7A(0-5)MS

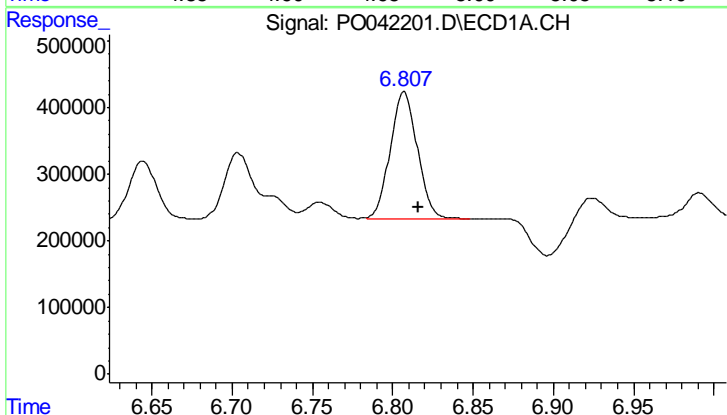
Manual Integrations  
 APPROVED

ugo  
 2/6/2018 5:42:52 PM



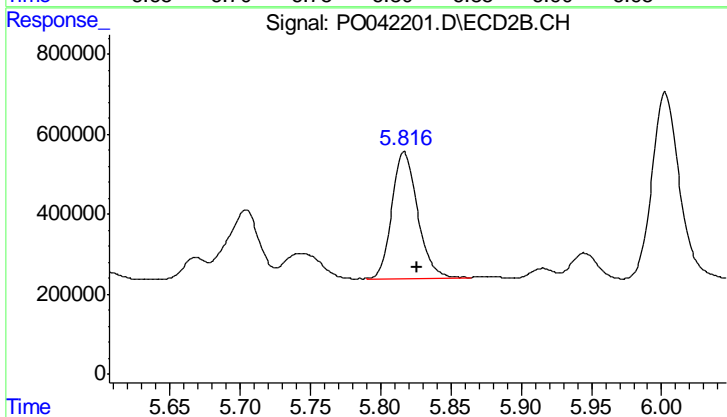
#7 AR-1016-5

R.T.: 4.961 min  
 Delta R.T.: -0.010 min  
 Response: 1494900  
 Conc: 150.78 ng/ml m



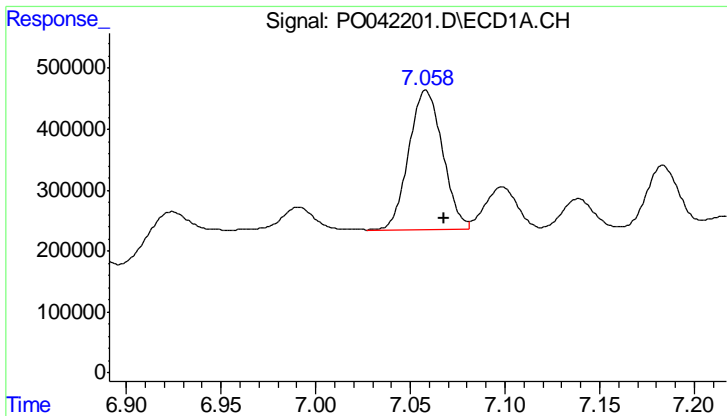
#31 AR-1260-1

R.T.: 6.807 min  
 Delta R.T.: -0.009 min  
 Response: 2237079  
 Conc: 177.83 ng/ml



#31 AR-1260-1

R.T.: 5.817 min  
 Delta R.T.: -0.009 min  
 Response: 4013885  
 Conc: 188.03 ng/ml



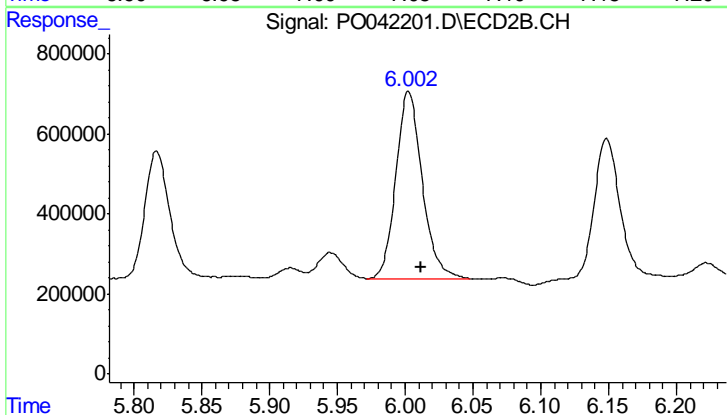
#32 AR-1260-2

R.T.: 7.058 min  
 Delta R.T.: -0.009 min  
 Response: 2828412  
 Conc: 162.56 ng/ml

Instrument :  
 ECD\_O  
 ClientSampleId :  
 EPE-125-7A(0-5)MS

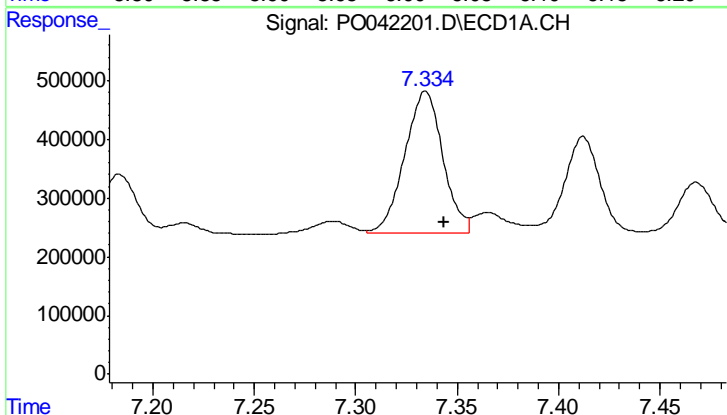
Manual Integrations  
 APPROVED

ugo  
 2/6/2018 5:42:52 PM



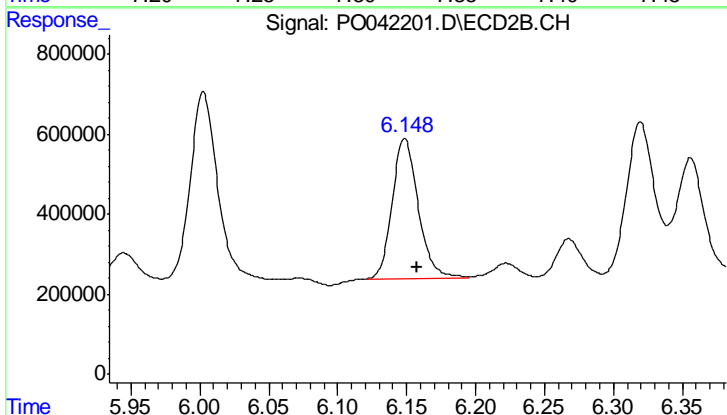
#32 AR-1260-2

R.T.: 6.002 min  
 Delta R.T.: -0.010 min  
 Response: 6324161  
 Conc: 200.22 ng/ml m



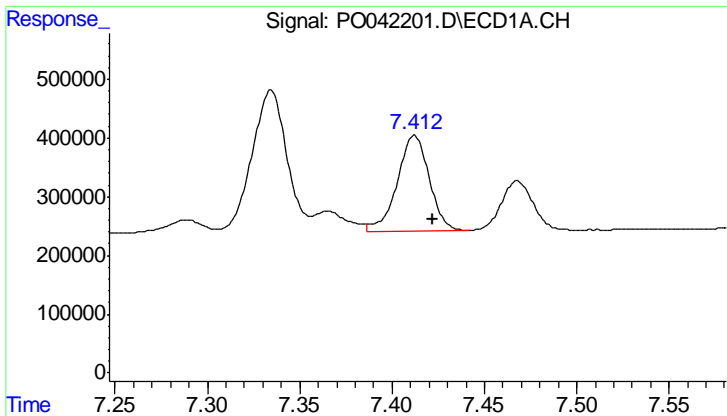
#33 AR-1260-3

R.T.: 7.334 min  
 Delta R.T.: -0.009 min  
 Response: 3169365  
 Conc: 157.90 ng/ml



#33 AR-1260-3

R.T.: 6.148 min  
 Delta R.T.: -0.009 min  
 Response: 4645497  
 Conc: 177.99 ng/ml m



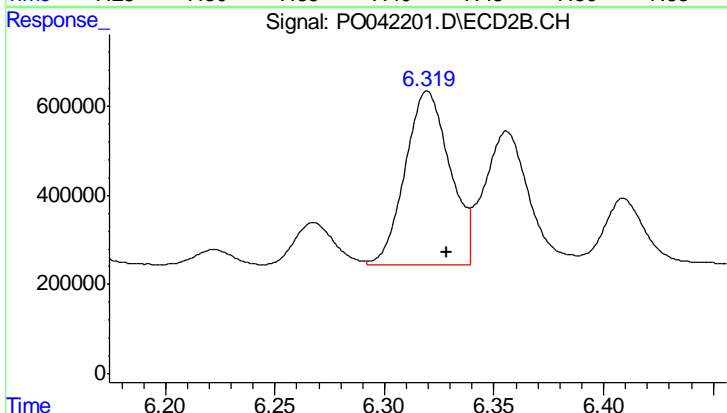
#34 AR-1260-4

R.T.: 7.412 min  
 Delta R.T.: -0.010 min  
 Response: 1970521  
 Conc: 167.53 ng/ml

Instrument :  
 ECD\_O  
 ClientSampleId :  
 EPE-125-7A(0-5)MS

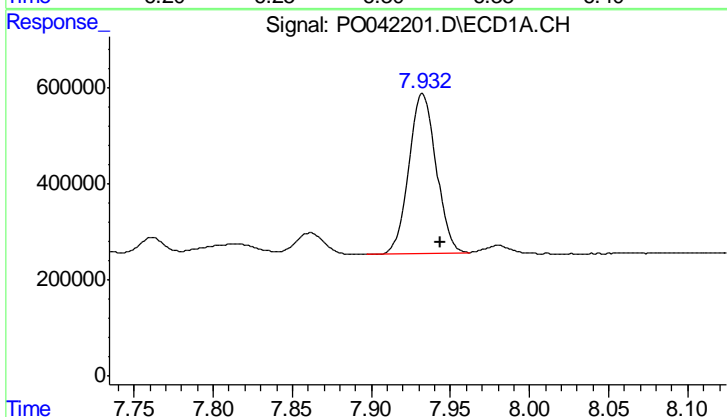
Manual Integrations  
 APPROVED

ugo  
 2/6/2018 5:42:52 PM



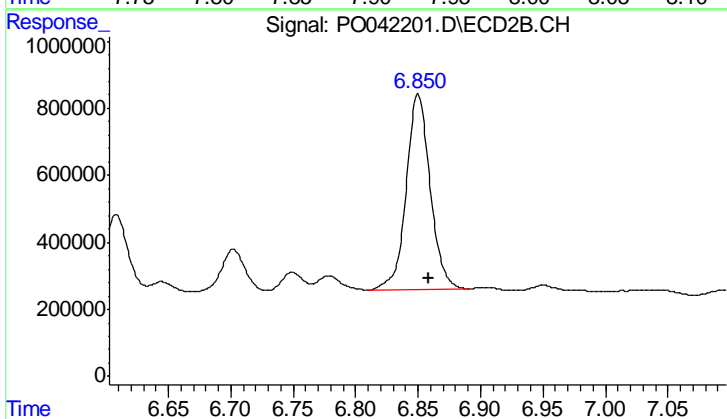
#34 AR-1260-4

R.T.: 6.319 min  
 Delta R.T.: -0.010 min  
 Response: 5510505  
 Conc: 161.61 ng/ml m



#35 AR-1260-5

R.T.: 7.932 min  
 Delta R.T.: -0.011 min  
 Response: 4009551  
 Conc: 152.44 ng/ml



#35 AR-1260-5

R.T.: 6.850 min  
 Delta R.T.: -0.009 min  
 Response: 7759976  
 Conc: 144.63 ng/ml